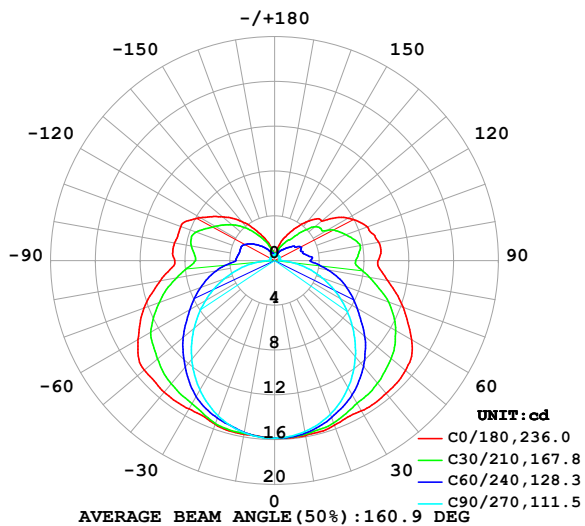


LUMINAIRE PHOTOMETRIC TEST REPORT

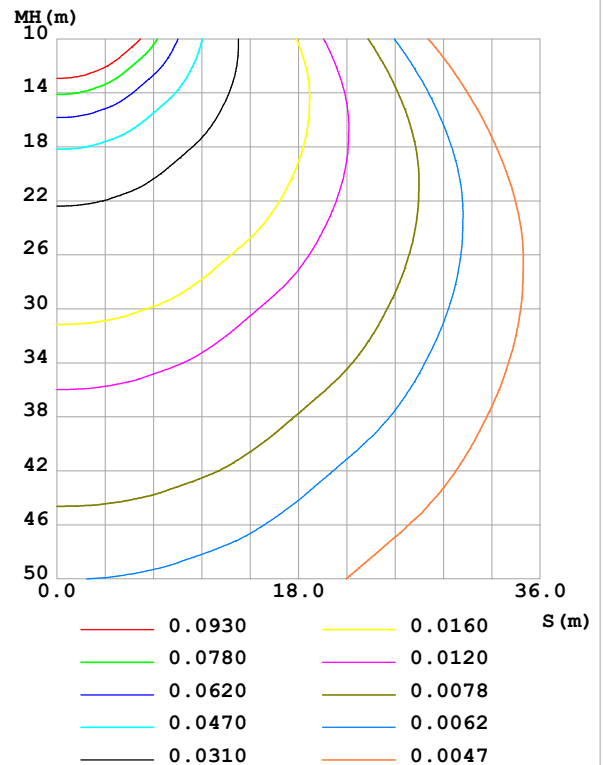
Test:U:24.00V I:0.4177A P:10.02W PF:1.000 Freq:0Hz Lamp Flux:89.2541x1 lm		
NAME: SF18-24V-5050-70-SPI-RGBW(4000K)-R	TYPE:	WEIGHT:
SPEC.:	DIM.: Length=1m	SERIAL No.:
MFR.: Olym pia lighting	SUR.:	Shielding Angle:

DATA OF LAMP		PHOTOMETRIC DATA				Eff: 8.90 lm/W
MODEL	5050	Imax (cd)	15.89	S/MH(C0/180)	1.49	
NOMINAL POWER(W)		LOR(%)	100.0	S/MH(C90/270)	1.25	
RATED VOLTAGE(V)	24	TOTAL FLUX(lm)	89.254	η UP,DN(C0-180)	13.2,36.5	
NOMINAL FLUX(lm)	89.2541	CIE CLASS	SEMI-D.	η UP,DN(C180-360)	13.2,37.2	
LAMPS INSIDE	1	η up (%)	26.3	CIBSE SHR NOM	1.50	
TEST VOLTAGE(V)		η down (%)	73.7	CIBSE SHR MAX	1.55	

LUMINOUS INTENSITY DISTRIBUTION DIAGRAM



C0 PLANE ISOLUX DIAGRAM (UNIT:lx)



C Range: 0 - 360DEG
C Interval: 30.0DEG
Test Speed: HIGH
Temperature: 25.3 °C
Operators:
Test Date: 2025-03-13

γ Range: 0 - 180DEG
 γ Interval: 1.0DEG
Test System: EVERFINE GO-2000B_V1 SYSTEM V2.00.488
Humidity: 65.0%
Test Distance: 6.360m [K=1.0000]
Remarks:

ZONAL FLUX DIAGRAM

ZONAL FLUX DIAGRAM:

γ	C0	C45	C90	C135	C180	C225	C270	C315	γ	Φ zone	Φ total	%lum, lamp
10	15.87	15.71	15.52	15.58	15.76	15.62	15.62	15.76	0- 10	1.505	1.505	1.69,1.69
20	15.66	15.17	14.60	15.14	15.56	15.22	14.76	15.27	10- 20	4.375	5.880	6.59,6.59
30	15.49	14.29	13.13	14.26	15.31	14.39	13.35	14.44	20- 30	6.819	12.70	14.2,14.2
40	15.50	13.32	11.22	13.22	15.35	13.40	11.51	13.54	30- 40	8.708	21.41	24,24
50	15.29	12.06	9.062	11.95	15.21	12.16	9.394	12.33	40- 50	9.883	31.29	35.1,35.1
60	14.14	10.49	6.795	10.54	14.09	10.75	7.126	10.84	50- 60	10.21	41.50	46.5,46.5
70	12.23	8.814	4.522	8.827	12.41	8.985	4.804	9.272	60- 70	9.631	51.13	57.3,57.3
80	10.25	6.707	2.309	6.970	10.37	7.094	2.542	7.307	70- 80	8.252	59.39	66.5,66.5
90	9.248	5.215	0.4253	5.328	8.921	5.266	0.5069	5.581	80- 90	6.366	65.75	73.7,73.7
100	9.455	5.341	0.4340	5.513	9.085	5.420	0.4656	5.454	90-100	5.698	71.45	80.1,80.1
110	8.821	4.648	0.4570	5.374	8.933	5.337	0.4770	4.958	100-110	5.392	76.84	86.1,86.1
120	7.593	3.969	0.4857	4.556	7.667	4.534	0.4857	4.154	110-120	4.581	81.42	91.2,91.2
130	5.501	3.342	0.5144	3.642	6.104	3.623	0.4857	3.321	120-130	3.392	84.82	95,95
140	4.567	2.130	0.5202	2.680	4.566	2.656	0.4685	2.099	130-140	2.262	87.08	97.6,97.6
150	3.043	1.428	0.5403	1.753	2.931	1.731	0.4598	1.251	140-150	1.266	88.34	99,99
160	1.890	0.9039	0.5432	1.109	1.741	1.103	0.4914	0.8242	150-160	0.6148	88.96	99.7,99.7
170	0.6900	0.6241	0.5518	0.6931	0.6805	0.7113	0.5259	0.5922	160-170	0.2365	89.20	99.9,99.9
180	0.5835	0.5704	0.5547	0.5608	0.5747	0.5791	0.5432	0.5494	170-180	0.0582	89.25	100,100
DEG	LUMINOUS INTENSITY:cd									UNIT:lm		

Conical surface Flux(90deg): 26.25 lm

%lum = 29.4%

%lamp = 29.4%

Conical surface Flux(130deg): 46.445 lm

%lum = 52.0%

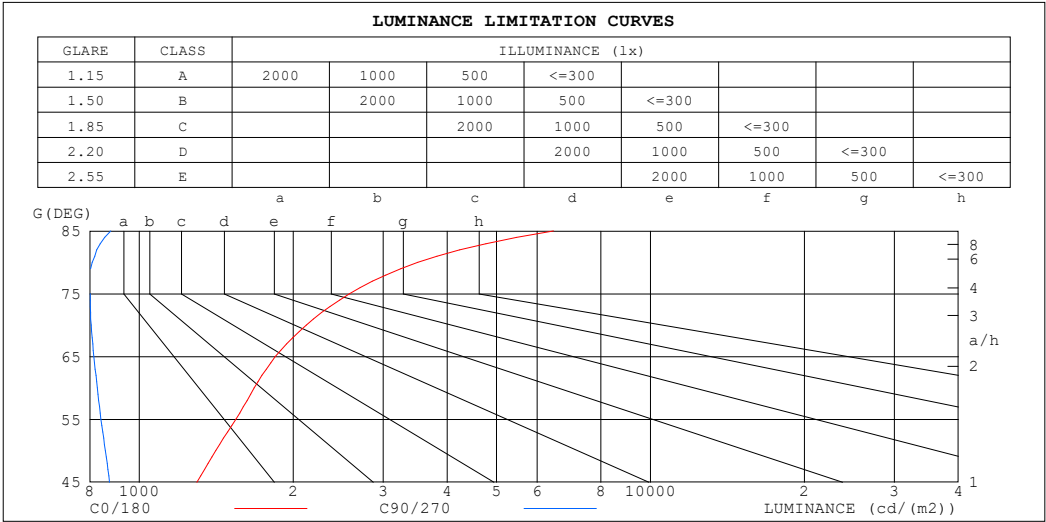
%lamp = 52.0%

C Range: 0 - 360DEG
 C Interval: 30.0DEG
 Test Speed: HIGH
 Temperature:25.3℃
 Operators:
 Test Date:2025-03-13

γ Range: 0 - 180DEG
 γ Interval: 1.0DEG
 Test System:EVERFINE GO-2000B_V1 SYSTEM V2.00.488
 Humidity:65.0%
 Test Distance:6.360m [K=1.0000]
 Remarks:

LUMINANCE LIMITATION CURVES

Test:U:24.00V I:0.4177A P:10.02W PF:1.000 Freq:0Hz Lamp Flux:89.2541x1 lm		
NAME: SF18-24V-5050-70-SPI-RGBW(4000K)-R	TYPE:	WEIGHT:
SPEC.:	DIM.: Length=1m	SERIAL No.:
MFR.: OLYMPIA lighting	SUR.:	Shielding Angle:



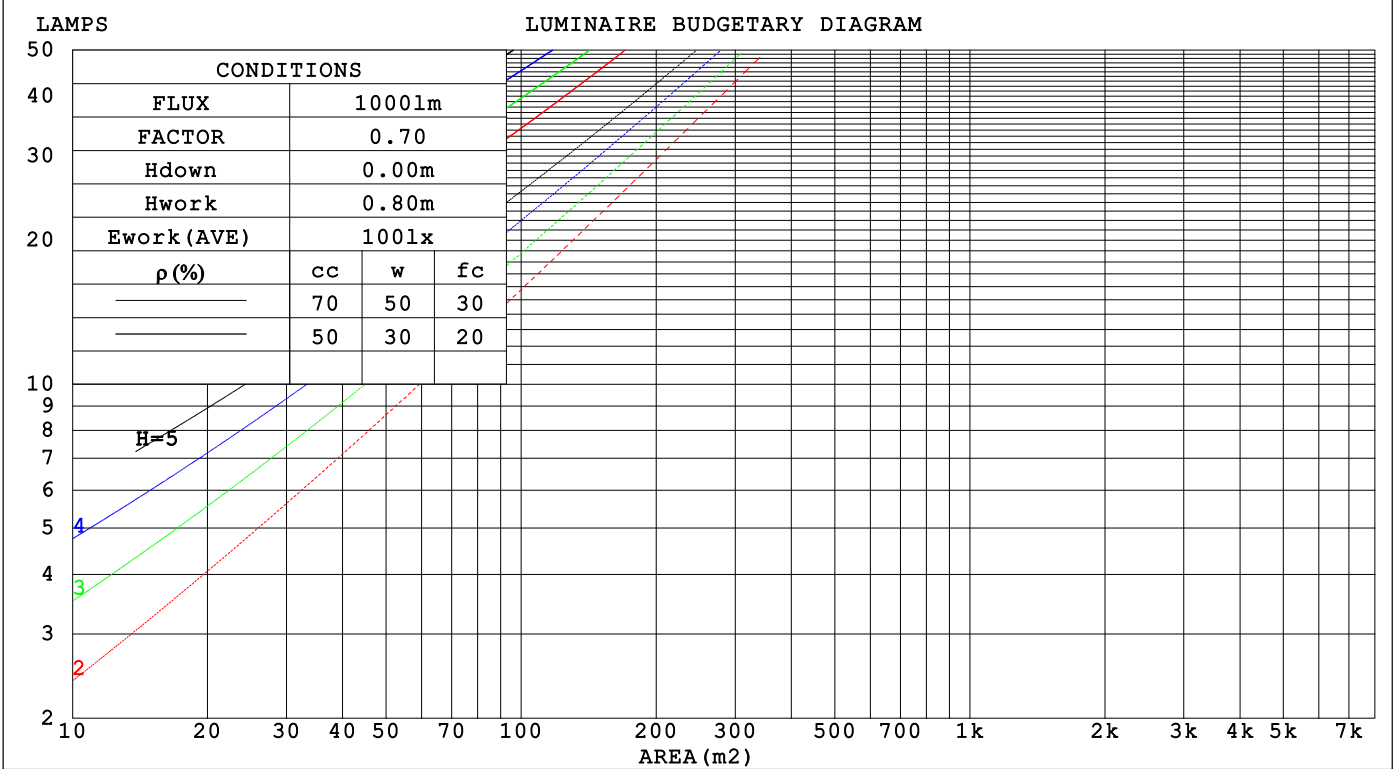
LUMINANCE cd/(m2)		
G (DEG)	C0/180	C90/270
85	6458	880
80	3505	809
75	2578	801
70	2122	805
65	1845	814
60	1678	827
55	1545	841
50	1412	858
45	1296	875

C Range: 0 - 360DEG	γ Range: 0 - 180DEG
C Interval: 30.0DEG	γ Interval: 1.0DEG
Test Speed: HIGH	Test System:EVERFINE GO-2000B_V1 SYSTEM V2.00.488
Temperature:25.3℃	Humidity:65.0%
Operators:	Test Distance:6.360m [K=1.0000]
Test Date:2025-03-13	Remarks:

CU AND LUMINAIRE BUDGETARY ESTIMATE DIAGRAM

Test:U:24.00V I:0.4177A P:10.02W PF:1.000 Freq:0Hz Lamp Flux:89.254lx1 lm		
NAME: SF18-24V-5050-70-SPI-RGBW(4000K)-R	TYPE:	WEIGHT:
SPEC.:	DIM.: Length=1m	SERIAL No.:
MFR.: OLYMPIA lighting	SUR.:	Shielding Angle:

pcc	80%			70%			50%			30%			10%			0														
p _w	50%	30%	10%	50%	30%	10%	50%	30%	10%	50%	30%	10%	50%	30%	10%	0														
p _{fc}	20%			20%			20%			20%			20%			0														
RCR	RCR:Room Cavity Ratio															Coefficients of Utilization(CU)														
0.0	1.13	1.13	1.13	1.07	1.07	1.07	.96	.96	.96	.87	.87	.87	.78	.78	.78	.74														
1.0	.94	.88	.84	.89	.84	.80	.80	.76	.72	.71	.68	.66	.64	.61	.59	.55														
2.0	.80	.72	.66	.76	.69	.63	.68	.62	.57	.61	.56	.52	.54	.50	.47	.43														
3.0	.69	.60	.53	.66	.57	.51	.59	.52	.47	.52	.47	.43	.47	.42	.39	.35														
4.0	.61	.51	.44	.58	.49	.42	.52	.45	.39	.46	.40	.36	.41	.36	.32	.29														
5.0	.54	.44	.37	.51	.42	.36	.46	.39	.33	.41	.35	.30	.37	.32	.28	.25														
6.0	.48	.39	.32	.46	.37	.31	.41	.34	.28	.37	.31	.26	.33	.28	.24	.21														
7.0	.43	.34	.28	.41	.33	.27	.37	.30	.25	.33	.27	.23	.30	.25	.21	.19														
8.0	.39	.30	.25	.37	.29	.24	.34	.27	.22	.31	.25	.20	.27	.22	.19	.16														
9.0	.36	.27	.22	.34	.26	.21	.31	.24	.20	.28	.22	.18	.25	.20	.17	.15														
10.0	.33	.25	.19	.31	.24	.19	.29	.22	.18	.26	.20	.16	.23	.19	.15	.13														



C Range: 0 - 360DEG
C Interval: 30.0DEG
Test Speed: HIGH
Temperature:25.3℃
Operators:
Test Date:2025-03-13

γ Range: 0 - 180DEG
γ Interval: 1.0DEG
Test System:EVERFINE GO-2000B_V1 SYSTEM V2.00.488
Humidity:65.0%
Test Distance:6.360m [K=1.0000]
Remarks:

WEC AND CCEC

Test:U:24.00V I:0.4177A P:10.02W PF:1.000 Freq:0Hz Lamp Flux:89.2541x1 lm		
NAME: SF18-24V-5050-70-SPI-RGBW(4000K)-R	TYPE:	WEIGHT:
SPEC.:	DIM.: Length=1m	SERIAL No.:
MFR.: OLympia lighting	SUR.:	Shielding Angle:

pcc	80%			70%			50%			30%			10%			0														
pw	50%	30%	10%	50%	30%	10%	50%	30%	10%	50%	30%	10%	50%	30%	10%	0														
pfc	20%			20%			20%			20%			20%			0														
RCR	RCR:Room Cavity Ratio															Wall Exitance Coefficients(WEC)														
0.0																														
1.0	.382	.217	.069	.367	.209	.067	.339	.194	.062	.312	.180	.058	.288	.167	.054															
2.0	.331	.181	.056	.317	.175	.054	.291	.162	.050	.268	.150	.047	.245	.139	.044															
3.0	.294	.156	.047	.282	.151	.045	.258	.140	.042	.236	.129	.040	.216	.120	.037															
4.0	.265	.138	.040	.253	.133	.039	.232	.123	.037	.212	.114	.034	.193	.105	.032															
5.0	.240	.123	.035	.230	.118	.034	.211	.110	.032	.192	.101	.030	.175	.094	.028															
6.0	.220	.110	.032	.211	.106	.031	.193	.099	.029	.176	.092	.027	.160	.084	.025															
7.0	.203	.100	.028	.194	.097	.028	.178	.090	.026	.162	.083	.024	.148	.077	.023															
8.0	.188	.092	.026	.180	.089	.025	.165	.082	.024	.151	.076	.022	.137	.071	.021															
9.0	.175	.085	.024	.168	.082	.023	.154	.076	.022	.141	.071	.020	.128	.065	.019															
10.0	.164	.079	.022	.157	.076	.021	.144	.071	.020	.132	.065	.019	.120	.060	.017															

pcc	80%			70%			50%			30%			10%			0
pw	50%	30%	10%	50%	30%	10%	50%	30%	10%	50%	30%	10%	50%	30%	10%	0
pfc	20%			20%			20%			20%			20%			0
RCR	RCR:Room Cavity Ratio						Ceiling Cavity Exitance Coefficients (CCEC)									
0.0	.391	.391	.391	.334	.334	.334	.228	.228	.228	.131	.131	.131	.042	.042	.042	
1.0	.388	.358	.331	.332	.307	.285	.227	.211	.197	.131	.122	.115	.042	.039	.037	
2.0	.381	.335	.297	.326	.289	.257	.224	.200	.179	.129	.116	.105	.041	.038	.034	
3.0	.374	.319	.276	.320	.275	.239	.220	.191	.168	.127	.112	.099	.041	.036	.032	
4.0	.366	.307	.262	.314	.265	.227	.216	.185	.160	.125	.108	.095	.040	.035	.031	
5.0	.359	.297	.252	.308	.257	.219	.212	.180	.155	.123	.106	.092	.040	.034	.030	
6.0	.351	.290	.245	.302	.251	.213	.208	.176	.151	.121	.103	.090	.039	.034	.030	
7.0	.344	.283	.240	.296	.245	.209	.205	.172	.148	.119	.101	.088	.038	.033	.029	
8.0	.338	.278	.236	.291	.241	.206	.201	.169	.146	.117	.100	.087	.038	.033	.029	
9.0	.332	.273	.233	.286	.237	.203	.198	.167	.144	.115	.098	.086	.037	.032	.029	
10.0	.326	.269	.231	.281	.233	.201	.195	.164	.143	.114	.097	.085	.037	.032	.028	

C Range: 0 - 360DEG
C Interval: 30.0DEG
Test Speed: HIGH
Temperature:25.3℃
Operators:
Test Date:2025-03-13

γ Range: 0 - 180DEG
γ Interval: 1.0DEG
Test System:EVERFINE GO-2000B_V1 SYSTEM V2.00.488
Humidity:65.0%
Test Distance:6.360m [K=1.0000]
Remarks:

UGR(Unified Glare Rating) Table

Test:U:24.00V I:0.4177A P:10.02W PF:1.000 Freq:0Hz Lamp Flux:89.254lx1 lm										
NAME: SF18-24V-5050-70-SPI-RGBW(4000K)-R					TYPE:			WEIGHT:		
SPEC.:					DIM.: Length=1m			SERIAL No.:		
MFR.: OLympia lighting					SUR.:			Shielding Angle:		
ceiling/cavity	0.7	0.7	0.5	0.5	0.3	0.7	0.7	0.5	0.5	0.3
walls	0.5	0.3	0.5	0.3	0.3	0.5	0.3	0.5	0.3	0.3
working plane	0.2	0.2	0.2	0.2	0.2	0.2	0.2	0.2	0.2	0.2
Room dimensions	Viewed crosswise					Viewed endwise				
x = 2H y = 2H	21.6	22.8	22.2	23.5	24.2	18.6	19.8	19.2	20.5	21.2
3H	24.3	25.5	24.9	26.1	26.9	20.2	21.4	20.9	22.1	22.8
4H	25.7	26.9	26.4	27.5	28.3	21.0	22.1	21.6	22.8	23.5
6H	27.3	28.4	28.0	29.1	29.9	21.6	22.6	22.3	23.3	24.1
8H	28.2	29.2	28.9	29.9	30.7	21.8	22.8	22.5	23.5	24.4
12H	29.2	30.2	29.9	30.9	31.8	22.0	23.0	22.7	23.7	24.5
4H 2H	22.0	23.1	22.7	23.8	24.6	19.9	21.0	20.5	21.7	22.5
3H	25.0	26.0	25.7	26.7	27.5	21.8	22.7	22.4	23.4	24.3
4H	26.7	27.6	27.4	28.3	29.2	22.7	23.5	23.4	24.3	25.1
6H	28.5	29.3	29.2	30.0	30.9	23.4	24.2	24.2	25.0	25.9
8H	29.5	30.2	30.2	31.0	31.9	23.8	24.5	24.5	25.3	26.2
12H	30.6	31.3	31.4	32.1	33.0	24.0	24.7	24.8	25.5	26.4
8H 4H	27.0	27.7	27.7	28.5	29.4	23.8	24.5	24.5	25.3	26.2
6H	29.0	29.7	29.8	30.5	31.4	24.9	25.5	25.7	26.3	27.2
8H	30.3	30.8	31.1	31.6	32.6	25.4	25.9	26.2	26.7	27.7
12H	31.7	32.2	32.5	33.0	34.0	25.8	26.3	26.6	27.1	28.1
12H 4H	27.0	27.6	27.7	28.4	29.3	24.1	24.8	24.9	25.6	26.5
6H	29.1	29.7	29.9	30.5	31.5	25.5	26.0	26.3	26.8	27.8
8H	30.5	31.0	31.3	31.8	32.8	26.1	26.6	26.9	27.4	28.4
Variations with the observer position at spacings(CIE Pub.117):										
S = 1.0H	+ 0.1 / - 0.1					+ 0.1 / - 0.1				
1.5H	+ 0.2 / - 0.3					+ 0.2 / - 0.3				
2.0H	+ 0.2 / - 0.3					+ 0.2 / - 0.4				

CIE Pub.117, 89.25 lm Total Lamp Luminous Flux Correct (8log(F/F0) = -8.4)
Area: 0.0165 m2

C Range: 0 - 360DEG
C Interval: 30.0DEG
Test Speed: HIGH
Temperature:25.3℃
Operators:
Test Date:2025-03-13

γ Range: 0 - 180DEG
γ Interval: 1.0DEG
Test System:EVERFINE GO-2000B_V1 SYSTEM V2.00.488
Humidity:65.0%
Test Distance:6.360m [K=1.0000]
Remarks:

UTILIZATION FACTORS TABLE

Test:U:24.00V I:0.4177A P:10.02W PF:1.000 Freq:0Hz Lamp Flux:89.2541x1 lm		
NAME: SF18-24V-5050-70-SPI-RGBW(4000K)-R	TYPE:	WEIGHT:
SPEC.:	DIM.: Length=1m	SERIAL No.:
MFR.: OLympia lighting	SUR.:	Shielding Angle:

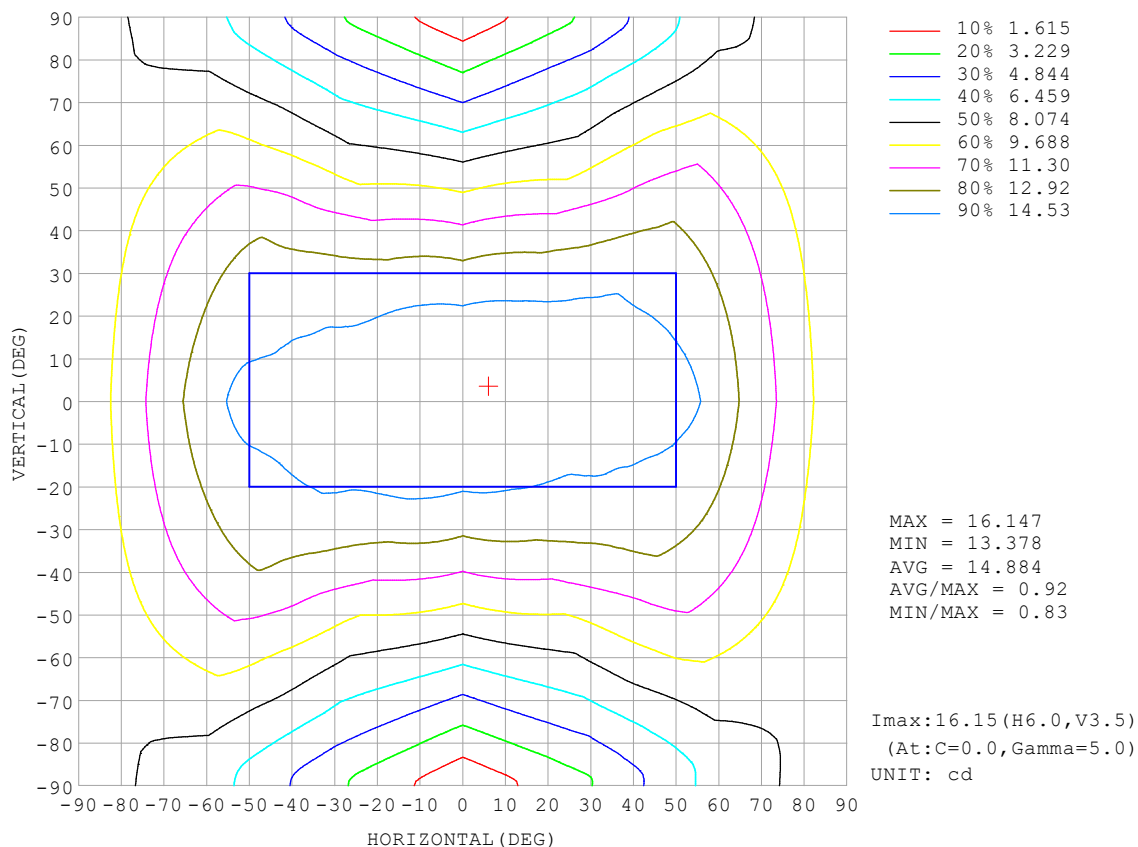
REFLECTANCE										
Ceiling	0.8	0.8	0.8	0.7	0.7	0.7	0.5	0.5	0.5	0
Walls	0.7	0.5	0.3	0.7	0.5	0.3	0.7	0.5	0.3	0
Working plane	0.2	0.2	0.2	0.2	0.2	0.2	0.2	0.2	0.2	0
ROOM INDEX	UTILIZATION FACTORS (PERCENT) $k(RI) \times RCR = 5$									
$k = 0.60$	45	32	25	43	32	25	41	30	24	17
0.80	54	41	32	52	40	32	49	38	31	23
1.00	61	48	40	59	47	39	55	47	37	28
1.25	68	55	47	66	54	46	61	51	43	33
1.50	74	61	52	70	59	51	65	55	48	36
2.00	81	70	61	77	67	59	71	62	56	42
2.50	86	75	67	82	72	65	74	67	60	46
3.00	90	80	72	85	77	70	77	70	65	49
4.00	94	86	79	90	82	76	81	75	70	54
5.00	98	90	84	93	86	81	84	79	74	57
ROOM INDEX	UF (total)									Direct
According to DIN EN 13032-2 2004			Suspended					SHRNOM = 1.25		

C Range: 0 - 360DEG
 C Interval: 30.0DEG
 Test Speed: HIGH
 Temperature: 25.3°C
 Operators:
 Test Date: 2025-03-13

γ Range: 0 - 180DEG
 γ Interval: 1.0DEG
 Test System: EVERFINE GO-2000B_V1 SYSTEM V2.00.488
 Humidity: 65.0%
 Test Distance: 6.360m [K=1.0000]
 Remarks:

ISOCANDELA DIAGRAM

Test:U:24.00V I:0.4177A P:10.02W PF:1.000 Freq:0Hz Lamp Flux:89.254lx1 lm		
NAME: SF18-24V-5050-70-SPI-RGBW(4000K)-R	TYPE:	WEIGHT:
SPEC.:	DIM.: Length=1m	SERIAL No.:
MFR.: OLympia lighting	SUR.:	Shielding Angle:

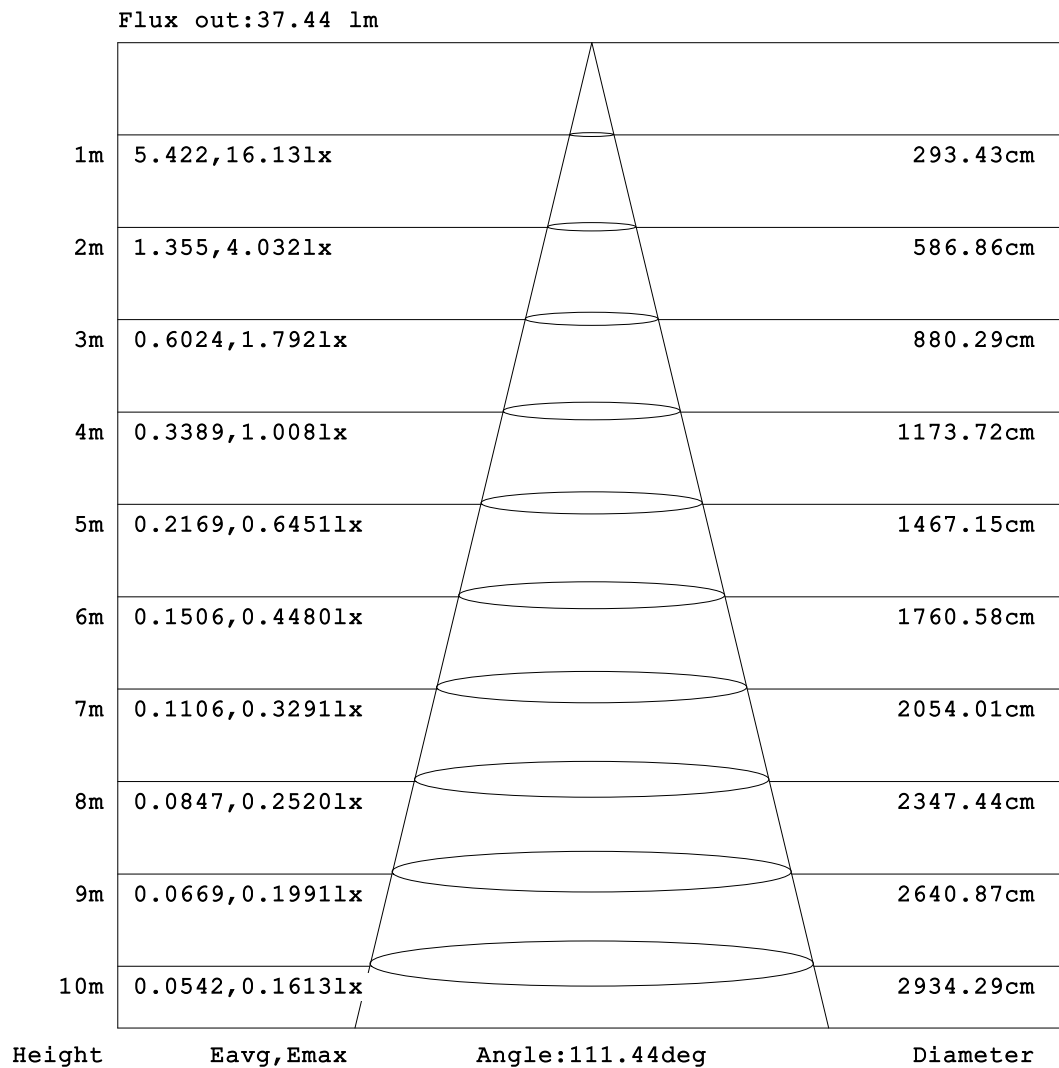


C Range: 0 - 360DEG
C Interval: 30.0DEG
Test Speed: HIGH
Temperature:25.3℃
Operators:
Test Date:2025-03-13

γ Range: 0 - 180DEG
γ Interval: 1.0DEG
Test System:EVERFINE GO-2000B_V1 SYSTEM V2.00.488
Humidity:65.0%
Test Distance:6.360m [K=1.0000]
Remarks:

AAI Figure

Test:U:24.00V I:0.4177A P:10.02W PF:1.000 Freq:0Hz Lamp Flux:89.2541lx1 lm		
NAME: SF18-24V-5050-70-SPI-RGBW(4000K)-R	TYPE:	WEIGHT:
SPEC.:	DIM.: Length=1m	SERIAL No.:
MFR.: OLympia lighting	SUR.:	Shielding Angle:



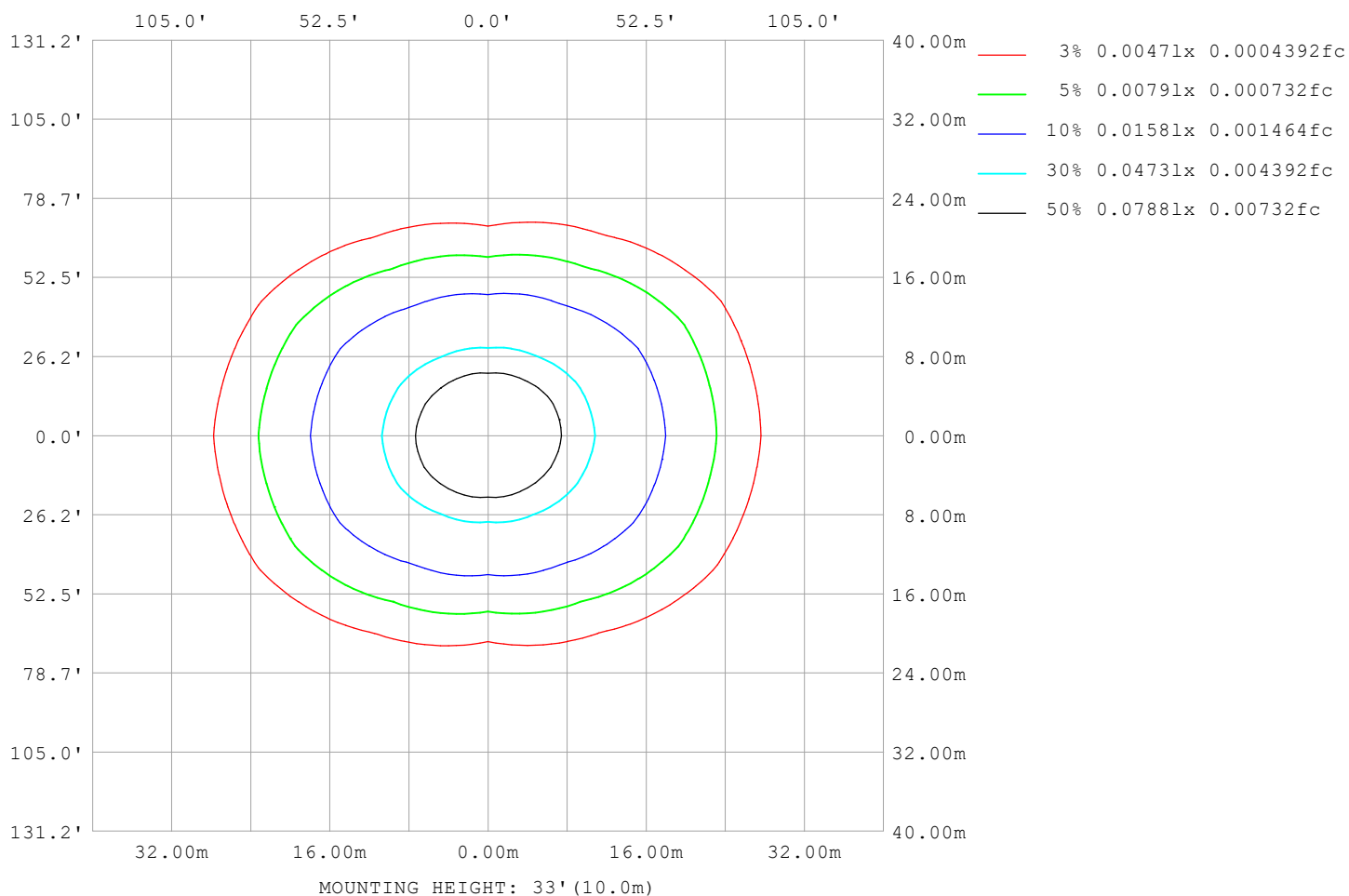
Note:The Curves indicate the illuminated area and the average illumination when the luminaire is at different distance.

C Range: 0 - 360DEG
C Interval: 30.0DEG
Test Speed: HIGH
Temperature:25.3℃
Operators:
Test Date:2025-03-13

γ Range: 0 - 180DEG
γ Interval: 1.0DEG
Test System:EVERFINE GO-2000B_V1 SYSTEM V2.00.488
Humidity:65.0%
Test Distance:6.360m [K=1.0000]
Remarks:

ISOLUX DIAGRAM

Test:U:24.00V I:0.4177A P:10.02W PF:1.000 Freq:0Hz Lamp Flux:89.254lx1 lm		
NAME: SF18-24V-5050-70-SPI-RGBW(4000K)-R	TYPE:	WEIGHT:
SPEC.:	DIM.: Length=1m	SERIAL No.:
MFR.: OLympia lighting	SUR.:	Shielding Angle:



C Range: 0 - 360DEG
C Interval: 30.0DEG
Test Speed: HIGH
Temperature:25.3℃
Operators:
Test Date:2025-03-13

γ Range: 0 - 180DEG
γ Interval: 1.0DEG
Test System:EVERFINE GO-2000B_V1 SYSTEM V2.00.488
Humidity:65.0%
Test Distance:6.360m [K=1.0000]
Remarks:

LED Avg.L Report

Test:U:24.00V I:0.4177A P:10.02W PF:1.000 Freq:0Hz Lamp Flux:89.2541x1 lm		
NAME: SF18-24V-5050-70-SPI-RGBW(4000K)-R	TYPE:	WEIGHT:
SPEC.:	DIM.: Length=1m	SERIAL No.:
MFR.: OLympia lighting	SUR.:	Shielding Angle:

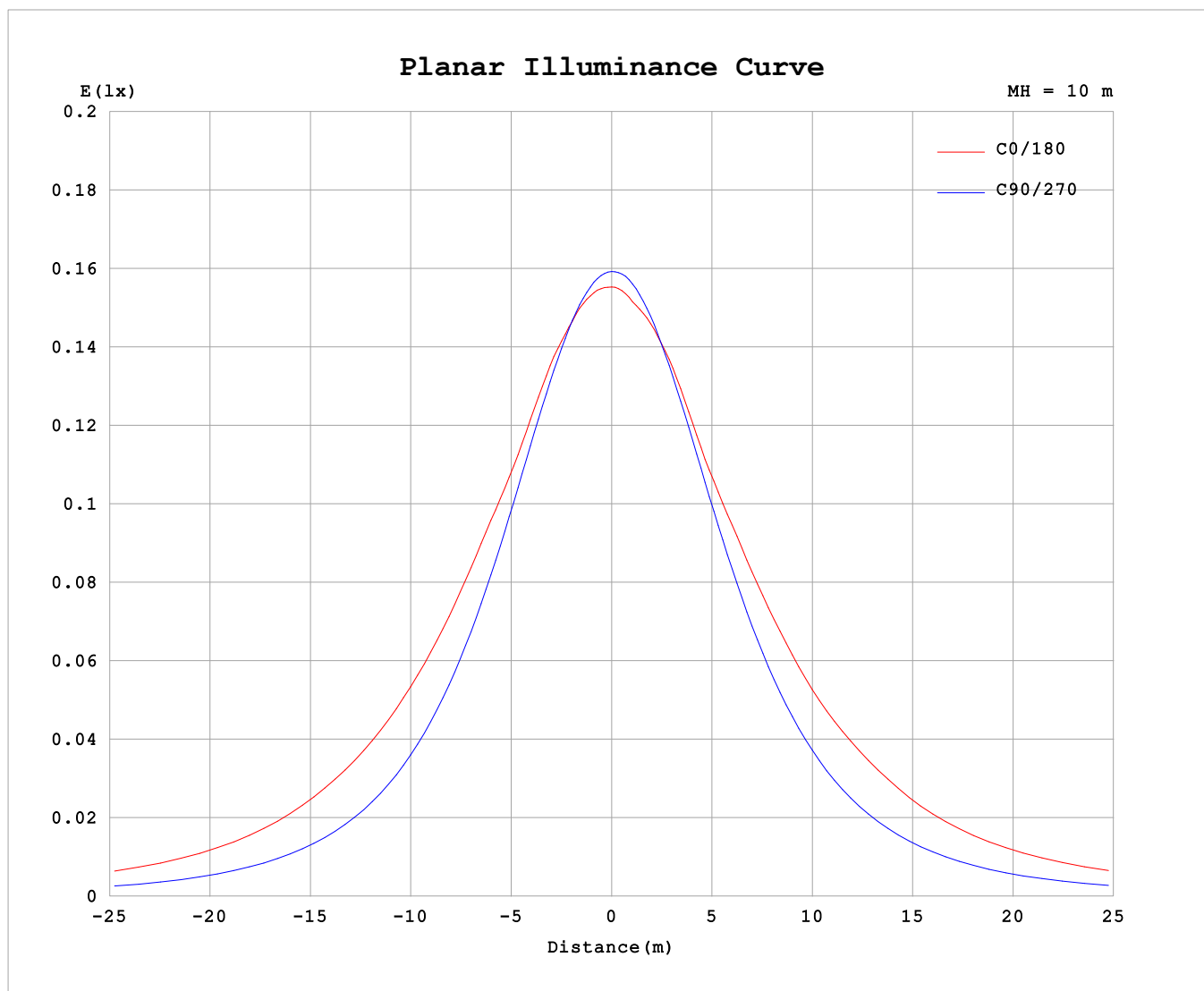
AvgL	cd/m2
L_0~180 (65) av	1893
L_0~180 (75) av	2648
L_0~180 (85) av	6564
L_90~270 (65) av	833
L_90~270 (75) av	827
L_90~270 (85) av	946
L_45 (65) av	1420
L_45 (75) av	1901
L_45 (85) av	4237

Standard: GB/T 29293-2012

C Range: 0 - 360DEG
C Interval: 30.0DEG
Test Speed: HIGH
Temperature:25.3℃
Operators:
Test Date:2025-03-13

γ Range: 0 - 180DEG
γ Interval: 1.0DEG
Test System:EVERFINE GO-2000B_V1 SYSTEM V2.00.488
Humidity:65.0%
Test Distance:6.360m [K=1.0000]
Remarks:

Planar Illuminance Curve



C Range: 0 - 360DEG
C Interval: 30.0DEG
Test Speed: HIGH
Temperature: 25.3°C
Operators:
Test Date: 2025-03-13

γ Range: 0 - 180DEG
 γ Interval: 1.0DEG
Test System: EVERFINE GO-2000B_V1 SYSTEM V2.00.488
Humidity: 65.0%
Test Distance: 6.360m [K=1.0000]
Remarks:

LUMINOUS DISTRIBUTION INTENSITY DATA

Test:U:24.00V I:0.4177A P:10.02W PF:1.000 Freq:0Hz Lamp Flux:89.254lx1 lm																	
NAME: SF18-24V-5050-70-SPI-RGBW(4000K)-R									TYPE:						WEIGHT:		
SPEC.:									DIM.: Length=1m						SERIAL No.:		
MFR.: OLympia lighting									SUR.:						Shielding Angle:		

Table--1

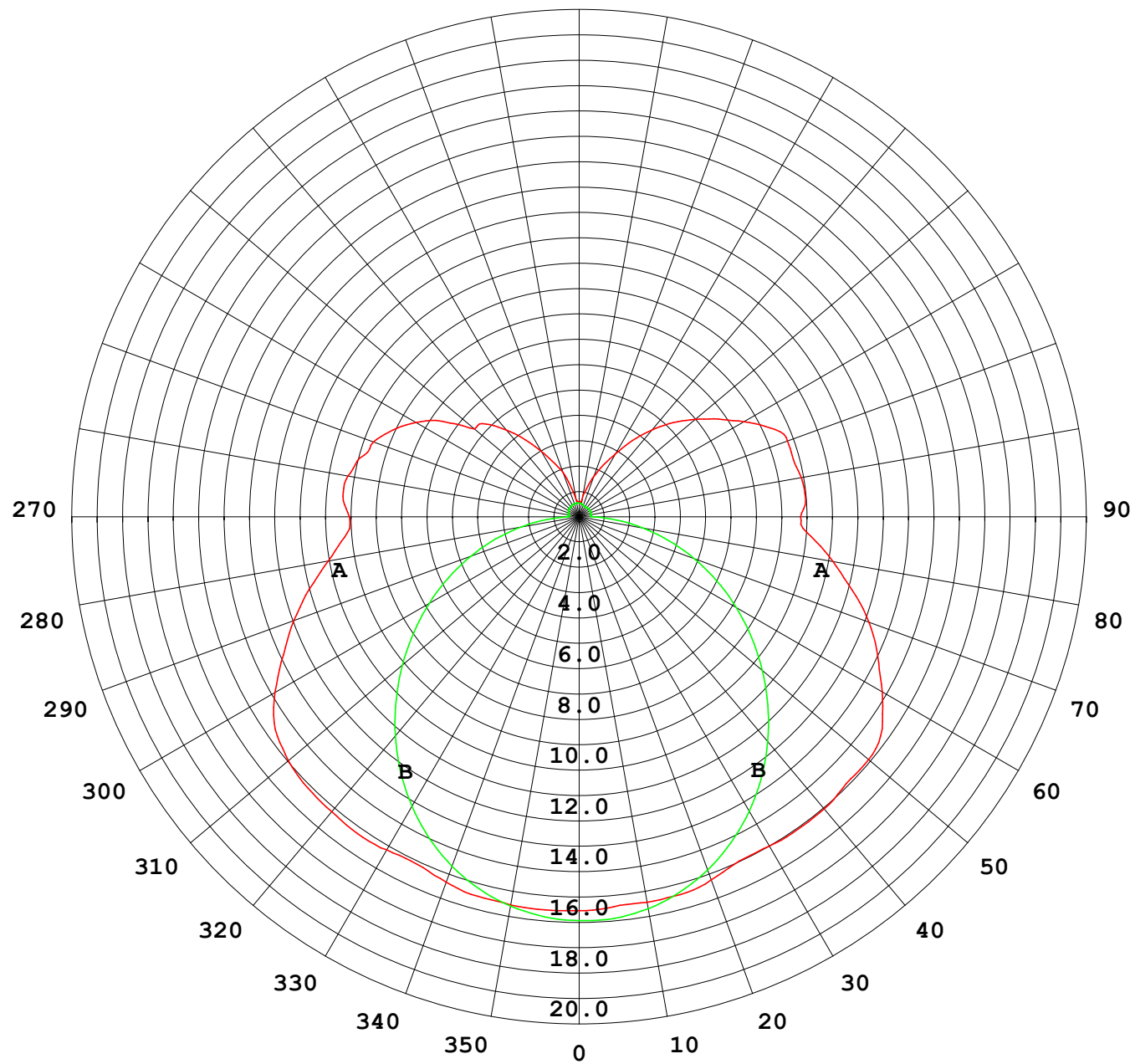
UNIT: cd

C (DEG) γ (DEG)	0	30	60	90	120	150	180	210	240	270	300	330						
0	15.9	15.9	15.9	15.9	15.9	15.9	15.9	15.9	15.9	15.9	15.9	15.9						
5	15.9	15.9	15.8	15.8	15.8	15.8	15.8	15.8	15.8	15.8	15.8	15.8						
10	15.9	15.8	15.7	15.5	15.5	15.6	15.8	15.7	15.6	15.6	15.7	15.8						
15	15.8	15.6	15.3	15.1	15.2	15.6	15.7	15.6	15.3	15.3	15.4	15.7						
20	15.7	15.4	14.9	14.6	14.9	15.4	15.6	15.5	15.0	14.8	15.0	15.5						
25	15.4	15.1	14.4	13.9	14.5	15.0	15.3	15.1	14.6	14.1	14.5	15.2						
30	15.5	14.7	13.9	13.1	13.9	14.6	15.3	14.8	14.0	13.4	14.0	14.9						
35	15.6	14.6	13.1	12.2	13.1	14.5	15.4	14.6	13.3	12.5	13.3	14.8						
40	15.5	14.3	12.4	11.2	12.2	14.2	15.4	14.4	12.4	11.5	12.6	14.5						
45	15.4	13.9	11.4	10.2	11.3	13.9	15.2	14.1	11.6	10.5	11.7	14.2						
50	15.3	13.6	10.5	9.06	10.4	13.5	15.2	13.7	10.7	9.39	10.8	13.8						
55	14.9	13.1	9.44	7.92	9.40	13.1	14.9	13.2	9.66	8.27	9.76	13.4						
60	14.1	12.5	8.52	6.79	8.50	12.6	14.1	12.8	8.73	7.13	8.86	12.8						
65	13.1	11.7	7.67	5.65	7.67	11.7	13.3	11.9	7.89	5.97	8.04	12.1						
70	12.2	10.8	6.79	4.52	6.84	10.8	12.4	11.0	7.03	4.80	7.22	11.3						
75	11.2	9.67	5.87	3.41	6.04	9.87	11.4	10.02	6.19	3.66	6.42	10.2						
80	10.3	8.60	4.83	2.31	5.15	8.78	10.4	8.90	5.29	2.54	5.45	9.15						
85	9.48	7.60	3.86	1.26	4.19	7.74	9.40	7.84	4.32	1.46	4.41	8.14						
90	9.25	7.25	3.19	0.43	3.52	7.12	8.92	7.08	3.47	0.51	3.59	7.56						
95	9.55	7.56	3.40	0.43	3.45	7.35	9.14	7.21	3.40	0.47	3.61	7.72						
100	9.45	7.77	2.93	0.43	3.34	7.67	9.09	7.57	3.28	0.47	3.09	7.80						
105	9.15	7.35	2.63	0.45	3.28	7.78	8.94	7.72	3.23	0.47	2.79	7.66						
110	8.82	6.81	2.50	0.46	3.28	7.45	8.93	7.45	3.23	0.48	2.74	7.16						
115	8.29	6.23	2.63	0.47	3.23	6.78	8.49	6.79	3.18	0.49	2.52	6.62						
120	7.59	5.41	2.54	0.49	2.98	6.13	7.67	6.13	2.95	0.49	2.40	5.90						
125	6.70	5.04	2.19	0.50	2.67	5.56	6.86	5.58	2.63	0.49	2.07	5.09						
130	5.50	4.75	1.95	0.51	2.31	4.97	6.10	4.99	2.26	0.49	1.87	4.76						
135	5.27	3.86	1.64	0.51	1.98	4.34	5.37	4.37	1.93	0.48	1.55	3.65						
140	4.57	2.89	1.38	0.52	1.69	3.67	4.57	3.69	1.63	0.47	1.26	2.93						
145	3.80	2.29	1.19	0.53	1.43	2.94	3.75	2.97	1.36	0.46	1.07	2.21						
150	3.04	1.87	0.99	0.54	1.16	2.35	2.93	2.39	1.08	0.46	0.85	1.65						
155	2.39	1.47	0.82	0.54	0.97	1.85	2.29	1.90	0.91	0.47	0.69	1.41						
160	1.89	1.09	0.72	0.54	0.83	1.38	1.74	1.43	0.78	0.49	0.63	1.02						
165	1.19	0.78	0.65	0.54	0.71	0.98	1.19	1.03	0.68	0.51	0.58	0.70						
170	0.69	0.63	0.61	0.55	0.66	0.73	0.68	0.78	0.64	0.53	0.56	0.62						
175	0.61	0.58	0.59	0.55	0.63	0.63	0.61	0.68	0.61	0.53	0.55	0.58						
180	0.58	0.58	0.56	0.55	0.57	0.56	0.57	0.59	0.57	0.54	0.55	0.55						

C Range: 0 - 360DEG
C Interval: 30.0DEG
Test Speed: HIGH
Temperature:25.3℃
Operators:
Test Date:2025-03-13

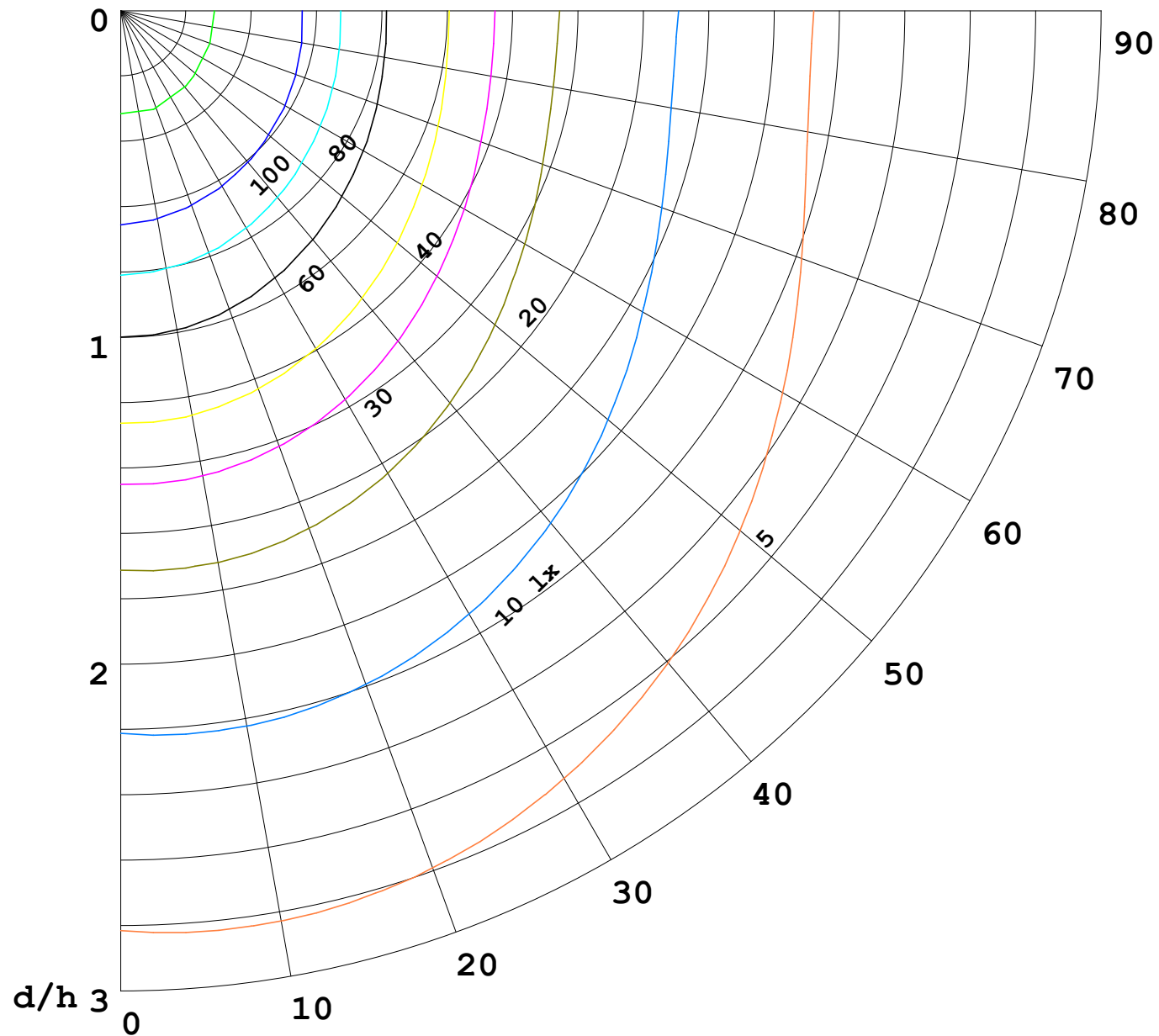
γ Range: 0 - 180DEG
γ Interval: 1.0DEG
Test System:EVERFINE GO-2000B_V1 SYSTEM V2.00.488
Humidity:65.0%
Test Distance:6.360m [K=1.0000]
Remarks:

I (cd)



1000 lm

$\kappa = 1$



F = 1000 lm
 K = 0.7
 Hcc = 0.8 m
 Hfc = 0.0 m
 Eave = 100 lx

	Pcc	Pw	Pfc
—————	70	50	30
—————	50	30	20

