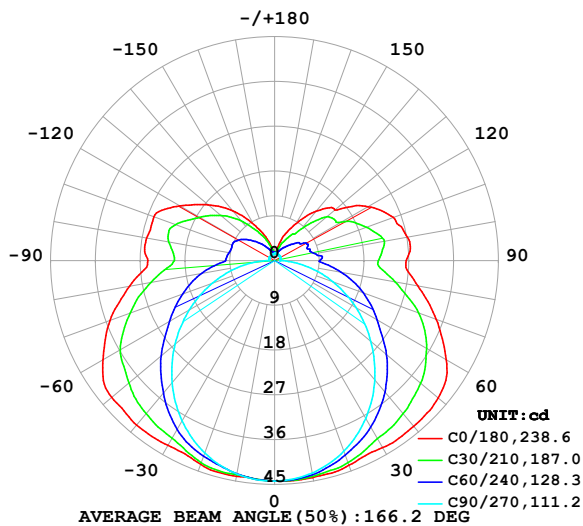


LUMINAIRE PHOTOMETRIC TEST REPORT

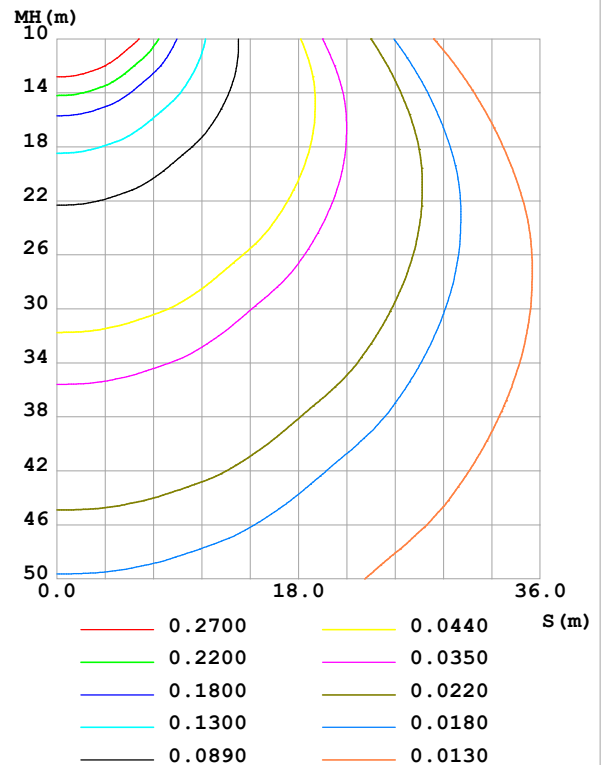
Test:U:24.00V I:0.4050A P:9.720W PF:1.000 Freq:0Hz Lamp Flux:252.086x1 lm		
NAME: SF18-24V-5050-70-SPI-RGBW(4000K)-G	TYPE:	WEIGHT:
SPEC.:	DIM.: Length=1m	SERIAL No.:
MFR.: Olympha lighting	SUR.:	Shielding Angle:

DATA OF LAMP		PHOTOMETRIC DATA				Eff: 25.93 lm/W
MODEL	5050	Imax (cd)	44.39	S/MH(C0/180)	1.50	
NOMINAL POWER(W)		LOR(%)	100.0	S/MH(C90/270)	1.25	
RATED VOLTAGE(V)	24	TOTAL FLUX(lm)	252.09	η UP,DN(C0-180)	13.3,36.3	
NOMINAL FLUX(lm)	252.086	CIE CLASS	SEMI-D.	η UP,DN(C180-360)	13.3,37.0	
LAMPS INSIDE	1	η up (%)	26.6	CIBSE SHR NOM	1.50	
TEST VOLTAGE(V)		η down (%)	73.4	CIBSE SHR MAX	1.55	

LUMINOUS INTENSITY DISTRIBUTION DIAGRAM



C0 PLANE ISOLUX DIAGRAM (UNIT:lx)



C Range: 0 - 360DEG
C Interval: 30.0DEG
Test Speed: HIGH
Temperature:25.3℃
Operators:
Test Date:2025-03-13

γ Range: 0 - 180DEG
 γ Interval: 1.0DEG
Test System:EVERFINE GO-2000B_V1 SYSTEM V2.00.488
Humidity:65.0%
Test Distance:6.360m [K=1.0000]
Remarks:

ZONAL FLUX DIAGRAM

ZONAL FLUX DIAGRAM:

γ	C0	C45	C90	C135	C180	C225	C270	C315	γ	Φ zone	Φ total	%lum, lamp
10	44.26	43.88	43.36	43.54	44.01	43.62	43.56	44.03	0- 10	4.202	4.202	1.67,1.67
20	43.77	42.39	40.75	42.31	43.57	42.52	41.12	42.69	10- 20	12.22	16.43	6.52,6.52
30	43.40	40.01	36.64	39.86	42.88	40.22	37.20	40.43	20- 30	19.07	35.49	14.1,14.1
40	43.48	37.34	31.31	37.02	43.14	37.47	32.06	37.90	30- 40	24.38	59.87	23.8,23.8
50	42.96	33.85	25.25	33.48	42.76	34.01	26.12	34.53	40- 50	27.71	87.58	34.7,34.7
60	39.84	29.55	18.89	29.59	39.85	30.13	19.79	30.47	50- 60	28.68	116.3	46.1,46.1
70	34.60	24.91	12.48	24.87	35.22	25.29	13.31	26.19	60- 70	27.15	143.4	56.9,56.9
80	29.23	19.10	6.310	19.72	29.62	20.06	7.019	20.78	70- 80	23.36	166.8	66.2,66.2
90	26.47	14.96	1.055	15.16	25.48	15.00	1.336	15.94	80- 90	18.16	184.9	73.4,73.4
100	27.13	15.33	1.107	15.68	26.12	15.47	1.229	15.61	90-100	16.32	201.2	79.8,79.8
110	25.39	13.35	1.182	15.31	25.81	15.17	1.295	14.14	100-110	15.48	216.7	86,86
120	21.72	11.34	1.254	12.96	22.03	12.88	1.308	11.84	110-120	13.12	229.8	91.2,91.2
130	15.85	9.600	1.338	10.35	17.49	10.28	1.295	9.446	120-130	9.693	239.5	95,95
140	12.96	6.031	1.370	7.576	13.05	7.519	1.237	5.921	130-140	6.445	246.0	97.6,97.6
150	8.567	3.991	1.416	4.916	8.350	4.859	1.231	3.466	140-150	3.579	249.6	99,99
160	5.231	2.484	1.454	3.071	4.903	3.042	1.344	2.273	150-160	1.719	251.3	99.7,99.7
170	1.852	1.695	1.477	1.913	1.911	1.938	1.434	1.613	160-170	0.6519	251.9	99.9,99.9
180	1.568	1.547	1.497	1.505	1.566	1.557	1.483	1.491	170-180	0.1587	252.1	100,100
DEG	LUMINOUS INTENSITY:cd									UNIT:lm		

Conical surface Flux(90deg): 73.446 lm

%lum = 29.1%

%lamp = 29.1%

Conical surface Flux(130deg): 130.17 lm

%lum = 51.6%

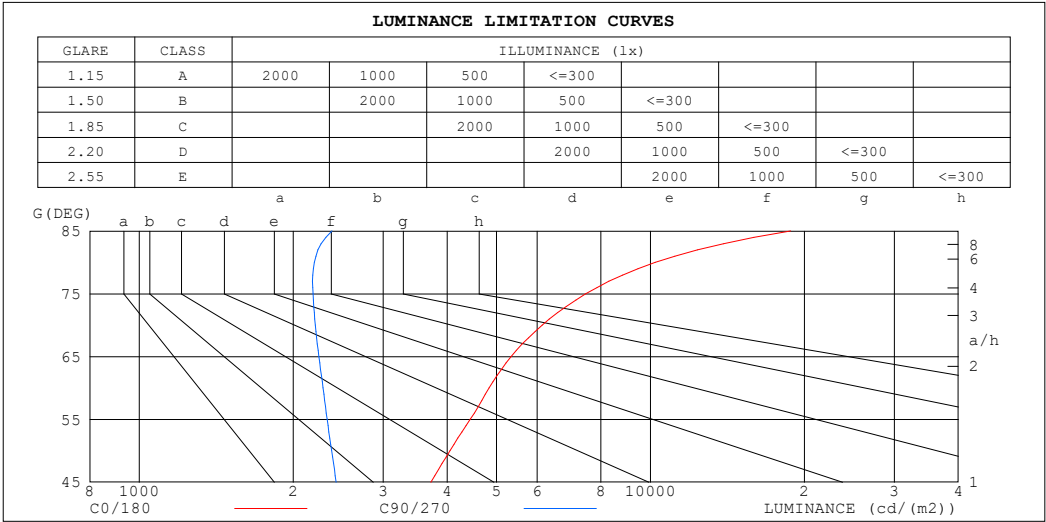
%lamp = 51.6%

C Range: 0 - 360DEG
 C Interval: 30.0DEG
 Test Speed: HIGH
 Temperature:25.3℃
 Operators:
 Test Date:2025-03-13

γ Range: 0 - 180DEG
 γ Interval: 1.0DEG
 Test System:EVERFINE GO-2000B_V1 SYSTEM V2.00.488
 Humidity:65.0%
 Test Distance:6.360m [K=1.0000]
 Remarks:

LUMINANCE LIMITATION CURVES

Test:U:24.00V I:0.4050A P:9.720W PF:1.000 Freq:0Hz Lamp Flux:252.086x1 lm		
NAME: SF18-24V-5050-70-SPI-RGBW(4000K)-G	TYPE:	WEIGHT:
SPEC.:	DIM.: Length=1m	SERIAL No.:
MFR.: OLympia lighting	SUR.:	Shielding Angle:



LUMINANCE cd/(m2)		
G (DEG)	C0/180	C90/270
85	18813	2382
80	10211	2199
75	7476	2187
70	6138	2208
65	5337	2245
60	4834	2287
55	4441	2330
50	4055	2378
45	3721	2426

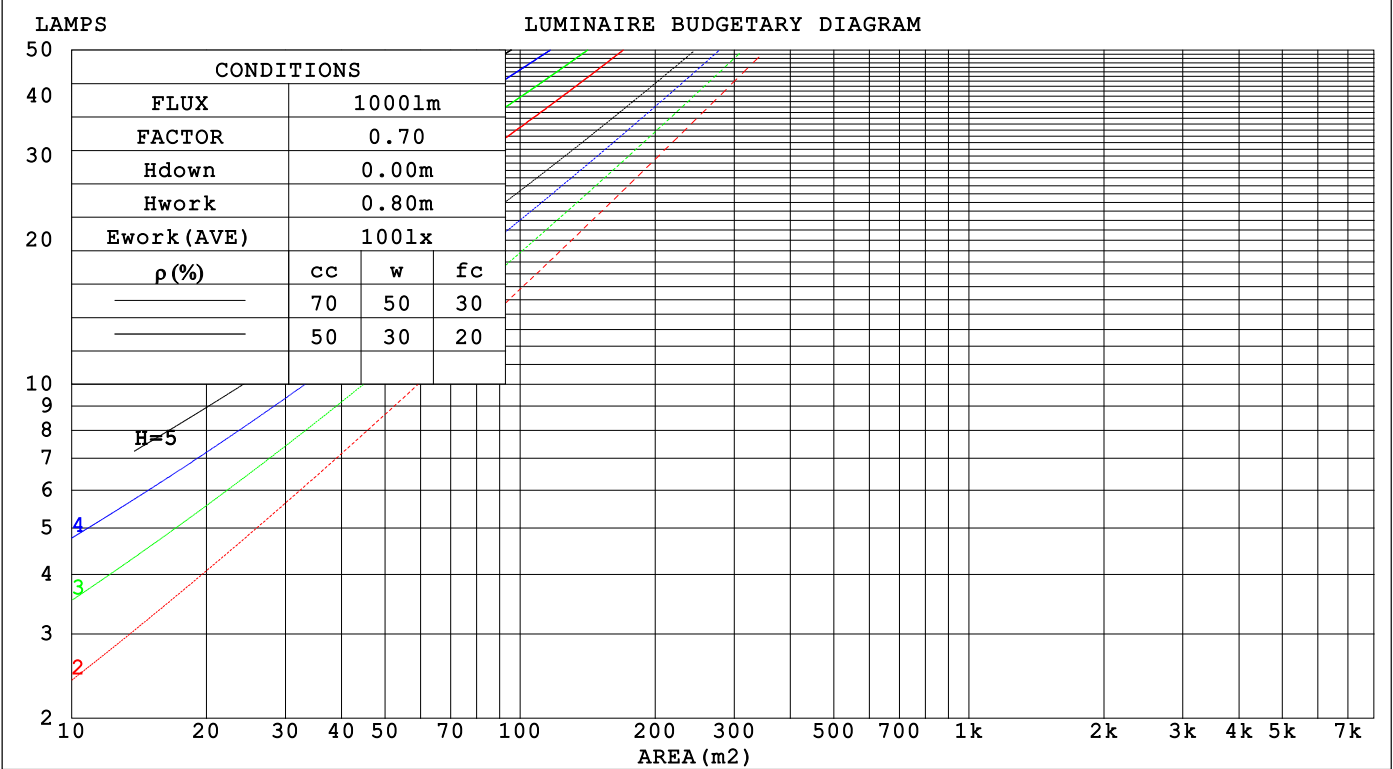
C Range: 0 - 360DEG
C Interval: 30.0DEG
Test Speed: HIGH
Temperature:25.3℃
Operators:
Test Date:2025-03-13

γ Range: 0 - 180DEG
γ Interval: 1.0DEG
Test System:EVERFINE GO-2000B_V1 SYSTEM V2.00.488
Humidity:65.0%
Test Distance:6.360m [K=1.0000]
Remarks:

CU AND LUMINAIRE BUDGETARY ESTIMATE DIAGRAM

Test:U:24.00V I:0.4050A P:9.720W PF:1.000 Freq:0Hz		
Lamp Flux:252.086x1 lm		
NAME: SF18-24V-5050-70-SPI-RGBW(4000K)-G	TYPE:	WEIGHT:
SPEC.:	DIM.: Length=1m	SERIAL No.:
MFR.: OLYMPIA lighting	SUR.:	Shielding Angle:

pcc	80%			70%			50%			30%			10%			0
pw	50%	30%	10%	50%	30%	10%	50%	30%	10%	50%	30%	10%	50%	30%	10%	0
pfc	20%			20%			20%			20%			20%			0
RCR	RCR:Room Cavity Ratio															



C Range: 0 - 360DEG
C Interval: 30.0DEG
Test Speed: HIGH
Temperature:25.3℃
Operators:
Test Date:2025-03-13

γ Range: 0 - 180DEG
γ Interval: 1.0DEG
Test System:EVERFINE GO-2000B_V1 SYSTEM V2.00.488
Humidity:65.0%
Test Distance:6.360m [K=1.0000]
Remarks:

WEC AND CCEC

Test:U:24.00V I:0.4050A P:9.720W PF:1.000 Freq:0Hz Lamp Flux:252.086x1 lm		
NAME: SF18-24V-5050-70-SPI-RGBW(4000K)-G	TYPE:	WEIGHT:
SPEC.:	DIM.: Length=1m	SERIAL No.:
MFR.: OLympia lighting	SUR.:	Shielding Angle:

pcc	80%			70%			50%			30%			10%			0														
pw	50%	30%	10%	50%	30%	10%	50%	30%	10%	50%	30%	10%	50%	30%	10%	0														
pfc	20%			20%			20%			20%			20%			0														
RCR	RCR:Room Cavity Ratio															Wall Exitance Coefficients(WEC)														
0.0																														
1.0	.383	.218	.069	.368	.210	.067	.339	.195	.062	.313	.180	.058	.289	.167	.054															
2.0	.332	.182	.056	.318	.175	.054	.292	.162	.050	.268	.150	.047	.245	.139	.044															
3.0	.294	.157	.047	.282	.151	.045	.258	.140	.043	.236	.129	.040	.216	.119	.037															
4.0	.265	.138	.040	.253	.133	.039	.232	.123	.037	.212	.114	.034	.193	.105	.032															
5.0	.241	.123	.036	.230	.118	.034	.210	.110	.032	.192	.101	.030	.175	.093	.028															
6.0	.220	.110	.032	.211	.106	.031	.193	.099	.029	.176	.091	.027	.160	.084	.025															
7.0	.203	.100	.028	.194	.097	.028	.178	.090	.026	.162	.083	.024	.148	.077	.023															
8.0	.188	.092	.026	.180	.089	.025	.165	.082	.024	.151	.076	.022	.137	.070	.020															
9.0	.175	.085	.024	.168	.082	.023	.154	.076	.022	.140	.070	.020	.128	.065	.019															
10.0	.164	.079	.022	.157	.076	.021	.144	.071	.020	.132	.065	.019	.120	.060	.017															

pcc	80%			70%			50%			30%			10%			0
pw	50%	30%	10%	50%	30%	10%	50%	30%	10%	50%	30%	10%	50%	30%	10%	0
pfc	20%			20%			20%			20%			20%			0
RCR	RCR:Room Cavity Ratio						Ceiling Cavity Exitance Coefficients (CCEC)									
0.0	.393	.393	.393	.336	.336	.336	.230	.230	.230	.132	.132	.132	.042	.042	.042	
1.0	.390	.360	.333	.334	.309	.287	.228	.213	.198	.131	.123	.115	.042	.040	.037	
2.0	.384	.338	.299	.329	.291	.259	.225	.201	.180	.130	.117	.106	.042	.038	.034	
3.0	.376	.322	.278	.323	.277	.241	.222	.193	.169	.128	.113	.100	.041	.037	.033	
4.0	.369	.309	.264	.316	.267	.229	.218	.186	.162	.126	.109	.096	.041	.036	.031	
5.0	.361	.300	.254	.310	.259	.221	.214	.181	.156	.124	.106	.093	.040	.035	.031	
6.0	.354	.292	.248	.304	.253	.216	.210	.177	.153	.122	.104	.091	.039	.034	.030	
7.0	.347	.286	.243	.298	.248	.211	.206	.174	.150	.120	.102	.089	.039	.033	.029	
8.0	.340	.280	.239	.293	.243	.208	.203	.171	.148	.118	.101	.088	.038	.033	.029	
9.0	.334	.275	.236	.288	.239	.206	.199	.168	.146	.116	.099	.087	.038	.033	.029	
10.0	.328	.271	.233	.283	.236	.204	.196	.166	.145	.115	.098	.086	.037	.032	.029	

C Range: 0 - 360DEG
C Interval: 30.0DEG
Test Speed: HIGH
Temperature:25.3℃
Operators:
Test Date:2025-03-13

γ Range: 0 - 180DEG
γ Interval: 1.0DEG
Test System:EVERFINE GO-2000B_V1 SYSTEM V2.00.488
Humidity:65.0%
Test Distance:6.360m [K=1.0000]
Remarks:

UGR(Unified Glare Rating) Table

Test:U:24.00V I:0.4050A P:9.720W PF:1.000 Freq:0Hz Lamp Flux:252.086x1 lm										
NAME: SF18-24V-5050-70-SPI-RGBW(4000K)-G					TYPE:			WEIGHT:		
SPEC.:					DIM.: Length=1m			SERIAL No.:		
MFR.: OLympia lighting					SUR.:			Shielding Angle:		
ceiling/cavity	0.7	0.7	0.5	0.5	0.3	0.7	0.7	0.5	0.5	0.3
walls	0.5	0.3	0.5	0.3	0.3	0.5	0.3	0.5	0.3	0.3
working plane	0.2	0.2	0.2	0.2	0.2	0.2	0.2	0.2	0.2	0.2
Room dimensions	Viewed crosswise					Viewed endwise				
x = 2H y = 2H	21.6	22.9	22.3	23.5	24.3	18.5	19.7	19.1	20.4	21.1
3H	24.4	25.6	25.0	26.2	27.0	20.1	21.3	20.8	21.9	22.7
4H	25.9	27.0	26.5	27.7	28.4	20.8	22.0	21.5	22.6	23.4
6H	27.5	28.5	28.2	29.2	30.0	21.5	22.5	22.1	23.2	24.0
8H	28.4	29.4	29.1	30.1	30.9	21.7	22.7	22.4	23.4	24.2
12H	29.4	30.4	30.1	31.1	31.9	21.9	22.8	22.6	23.6	24.4
4H 2H	22.1	23.2	22.8	23.9	24.7	19.8	21.0	20.5	21.6	22.4
3H	25.1	26.1	25.8	26.8	27.7	21.7	22.7	22.4	23.4	24.2
4H	26.8	27.7	27.5	28.4	29.3	22.6	23.5	23.3	24.2	25.1
6H	28.6	29.4	29.4	30.2	31.1	23.3	24.1	24.1	24.9	25.8
8H	29.6	30.4	30.4	31.1	32.1	23.7	24.4	24.4	25.2	26.1
12H	30.8	31.5	31.6	32.3	33.2	23.9	24.6	24.7	25.4	26.3
8H 4H	27.1	27.8	27.8	28.6	29.5	23.7	24.5	24.5	25.3	26.2
6H	29.2	29.8	30.0	30.6	31.6	24.8	25.5	25.6	26.2	27.2
8H	30.4	31.0	31.2	31.8	32.8	25.3	25.9	26.1	26.7	27.7
12H	31.9	32.4	32.7	33.2	34.2	25.8	26.3	26.6	27.1	28.1
12H 4H	27.1	27.8	27.8	28.5	29.5	24.1	24.8	24.9	25.6	26.5
6H	29.3	29.8	30.1	30.6	31.6	25.4	26.0	26.2	26.8	27.8
8H	30.6	31.1	31.4	31.9	32.9	26.1	26.6	26.9	27.4	28.4
Variations with the observer position at spacings(CIE Pub.117):										
S = 1.0H	+ 0.1 / - 0.1					+ 0.1 / - 0.1				
1.5H	+ 0.2 / - 0.2					+ 0.2 / - 0.3				
2.0H	+ 0.2 / - 0.3					+ 0.2 / - 0.4				

CIE Pub.117, 252.1 lm Total Lamp Luminous Flux Correct (8log(F/F0) = -4.8)
Area: 0.0165 m2

C Range: 0 - 360DEG
C Interval: 30.0DEG
Test Speed: HIGH
Temperature:25.3℃
Operators:
Test Date:2025-03-13

γ Range: 0 - 180DEG
γ Interval: 1.0DEG
Test System:EVERFINE GO-2000B_V1 SYSTEM V2.00.488
Humidity:65.0%
Test Distance:6.360m [K=1.0000]
Remarks:

UTILIZATION FACTORS TABLE

Test:U:24.00V I:0.4050A P:9.720W PF:1.000 Freq:0Hz Lamp Flux:252.086x1 lm		
NAME: SF18-24V-5050-70-SPI-RGBW(4000K)-G	TYPE:	WEIGHT:
SPEC.:	DIM.: Length=1m	SERIAL No.:
MFR.: OLympia lighting	SUR.:	Shielding Angle:

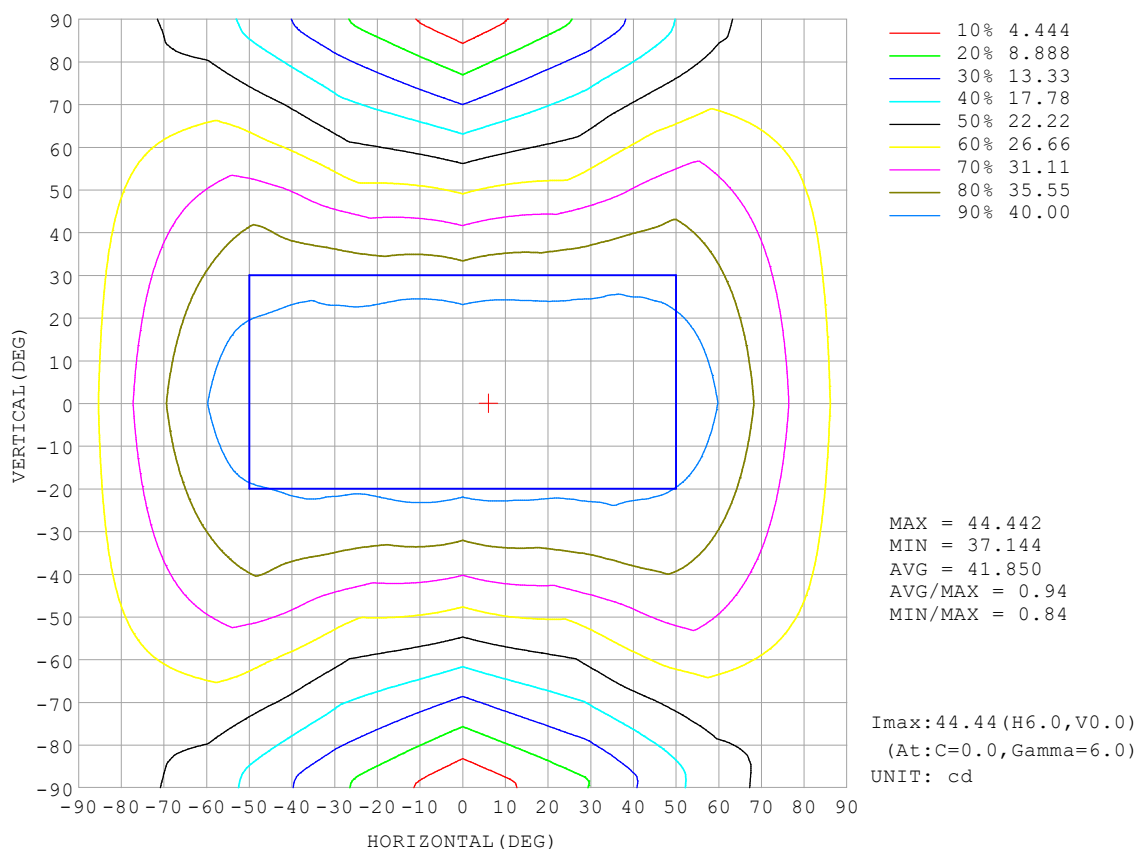
REFLECTANCE										
Ceiling	0.8	0.8	0.8	0.7	0.7	0.7	0.5	0.5	0.5	0
Walls	0.7	0.5	0.3	0.7	0.5	0.3	0.7	0.5	0.3	0
Working plane	0.2	0.2	0.2	0.2	0.2	0.2	0.2	0.2	0.2	0
ROOM INDEX	UTILIZATION FACTORS (PERCENT) $k(RI) \times RCR = 5$									
$k = 0.60$	45	32	25	43	31	25	41	30	24	17
0.80	54	40	32	52	39	32	48	38	31	22
1.00	61	48	39	59	47	39	55	47	37	28
1.25	68	55	46	65	54	45	60	50	43	33
1.50	73	61	52	70	59	51	64	55	48	36
2.00	81	69	61	77	67	59	70	62	55	42
2.50	86	75	67	82	72	65	74	66	60	46
3.00	89	80	72	85	76	69	77	70	64	49
4.00	94	86	79	90	82	76	81	75	70	53
5.00	97	90	84	92	86	81	83	78	74	56
ROOM INDEX	UF (total)									Direct
According to DIN EN 13032-2 2004			Suspended					SHRNOM = 1.25		

C Range: 0 - 360DEG
 C Interval: 30.0DEG
 Test Speed: HIGH
 Temperature: 25.3°C
 Operators:
 Test Date: 2025-03-13

γ Range: 0 - 180DEG
 γ Interval: 1.0DEG
 Test System: EVERFINE GO-2000B_V1 SYSTEM V2.00.488
 Humidity: 65.0%
 Test Distance: 6.360m [K=1.0000]
 Remarks:

ISOCANDELA DIAGRAM

Test:U:24.00V I:0.4050A P:9.720W PF:1.000 Freq:0Hz Lamp Flux:252.086x1 lm		
NAME: SF18-24V-5050-70-SPI-RGBW(4000K)-G	TYPE:	WEIGHT:
SPEC.:	DIM.: Length=1m	SERIAL No.:
MFR.: OLympia lighting	SUR.:	Shielding Angle:

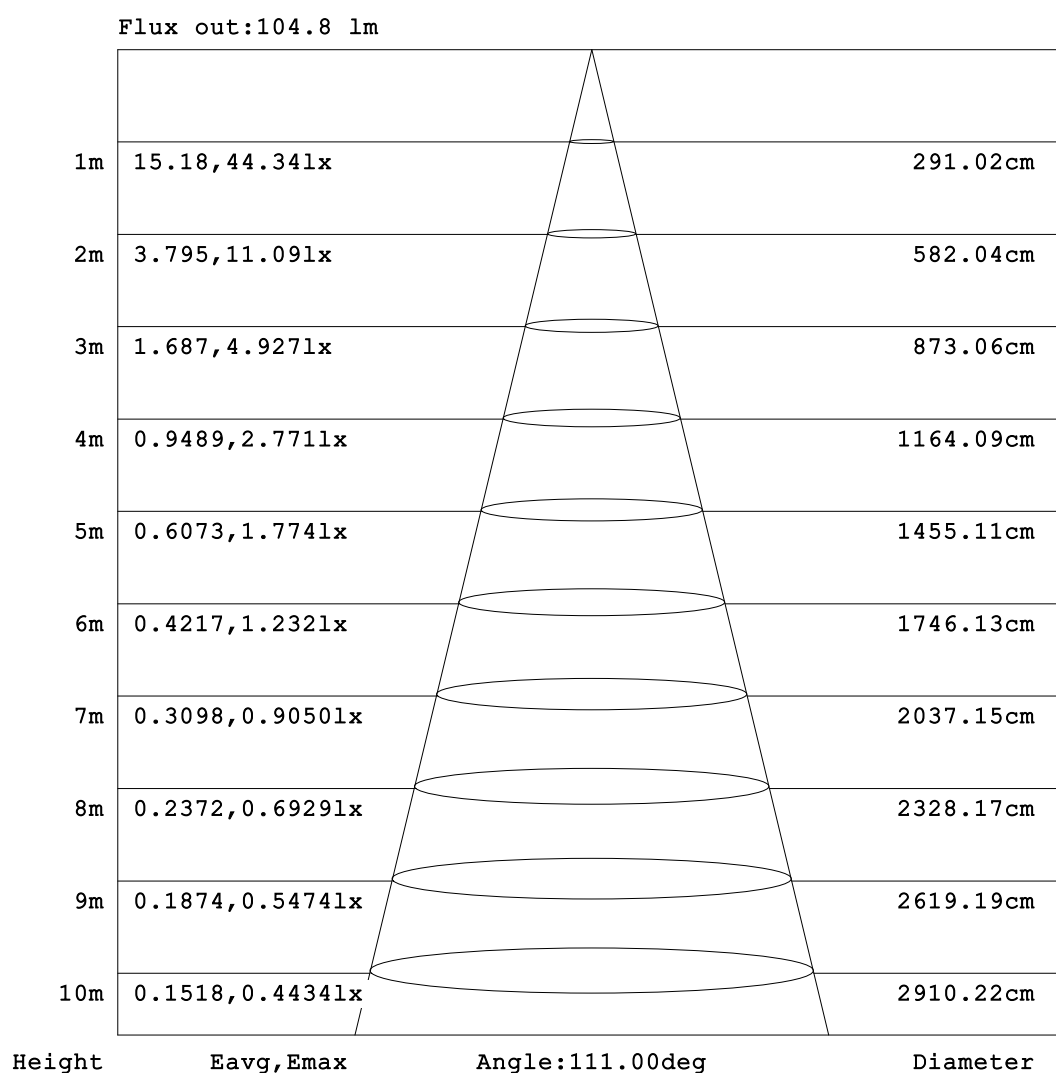


C Range: 0 - 360DEG
C Interval: 30.0DEG
Test Speed: HIGH
Temperature:25.3℃
Operators:
Test Date:2025-03-13

γ Range: 0 - 180DEG
γ Interval: 1.0DEG
Test System:EVERFINE GO-2000B_V1 SYSTEM V2.00.488
Humidity:65.0%
Test Distance:6.360m [K=1.0000]
Remarks:

AAI Figure

Test:U:24.00V I:0.4050A P:9.720W PF:1.000 Freq:0Hz Lamp Flux:252.086x1 lm		
NAME: SF18-24V-5050-70-SPI-RGBW(4000K)-G	TYPE:	WEIGHT:
SPEC.:	DIM.: Length=1m	SERIAL No.:
MFR.: OLympia lighting	SUR.:	Shielding Angle:



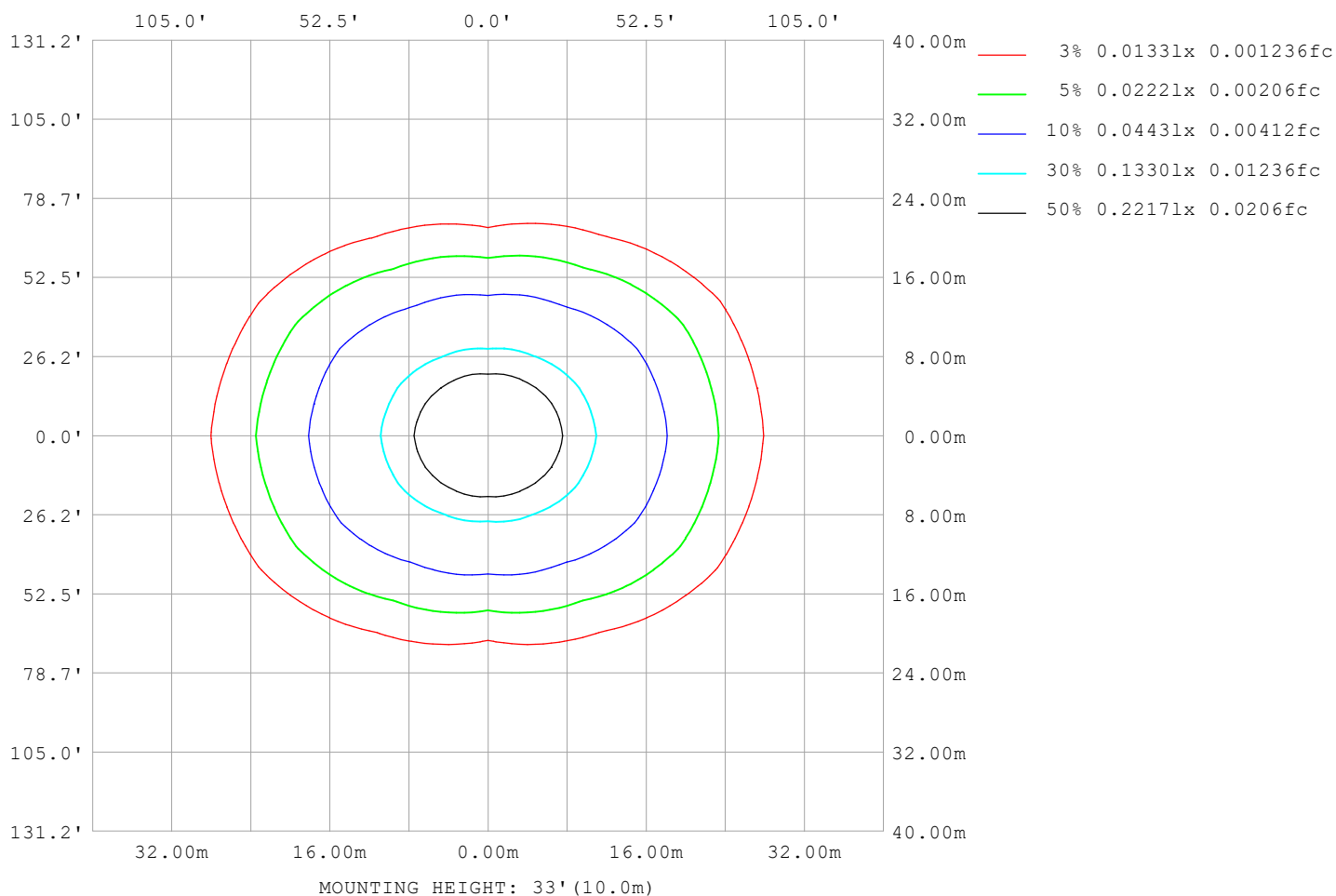
Note: The Curves indicate the illuminated area and the average illumination when the luminaire is at different distance.

C Range: 0 - 360DEG
C Interval: 30.0DEG
Test Speed: HIGH
Temperature: 25.3℃
Operators:
Test Date: 2025-03-13

γ Range: 0 - 180DEG
γ Interval: 1.0DEG
Test System: EVERFINE GO-2000B_V1 SYSTEM V2.00.488
Humidity: 65.0%
Test Distance: 6.360m [K=1.0000]
Remarks:

ISOLUX DIAGRAM

Test:U:24.00V I:0.4050A P:9.720W PF:1.000 Freq:0Hz Lamp Flux:252.086x1 lm		
NAME: SF18-24V-5050-70-SPI-RGBW(4000K)-G	TYPE:	WEIGHT:
SPEC.:	DIM.: Length=1m	SERIAL No.:
MFR.: OLympia lighting	SUR.:	Shielding Angle:



C Range: 0 - 360DEG
C Interval: 30.0DEG
Test Speed: HIGH
Temperature: 25.3°C
Operators:
Test Date: 2025-03-13

γ Range: 0 - 180DEG
γ Interval: 1.0DEG
Test System: EVERFINE GO-2000B_V1 SYSTEM V2.00.488
Humidity: 65.0%
Test Distance: 6.360m [K=1.0000]
Remarks:

LED Avg.L Report

Test:U:24.00V I:0.4050A P:9.720W PF:1.000 Freq:0Hz Lamp Flux:252.086x1 lm		
NAME: SF18-24V-5050-70-SPI-RGBW(4000K)-G	TYPE:	WEIGHT:
SPEC.:	DIM.: Length=1m	SERIAL No.:
MFR.: OLympia lighting	SUR.:	Shielding Angle:

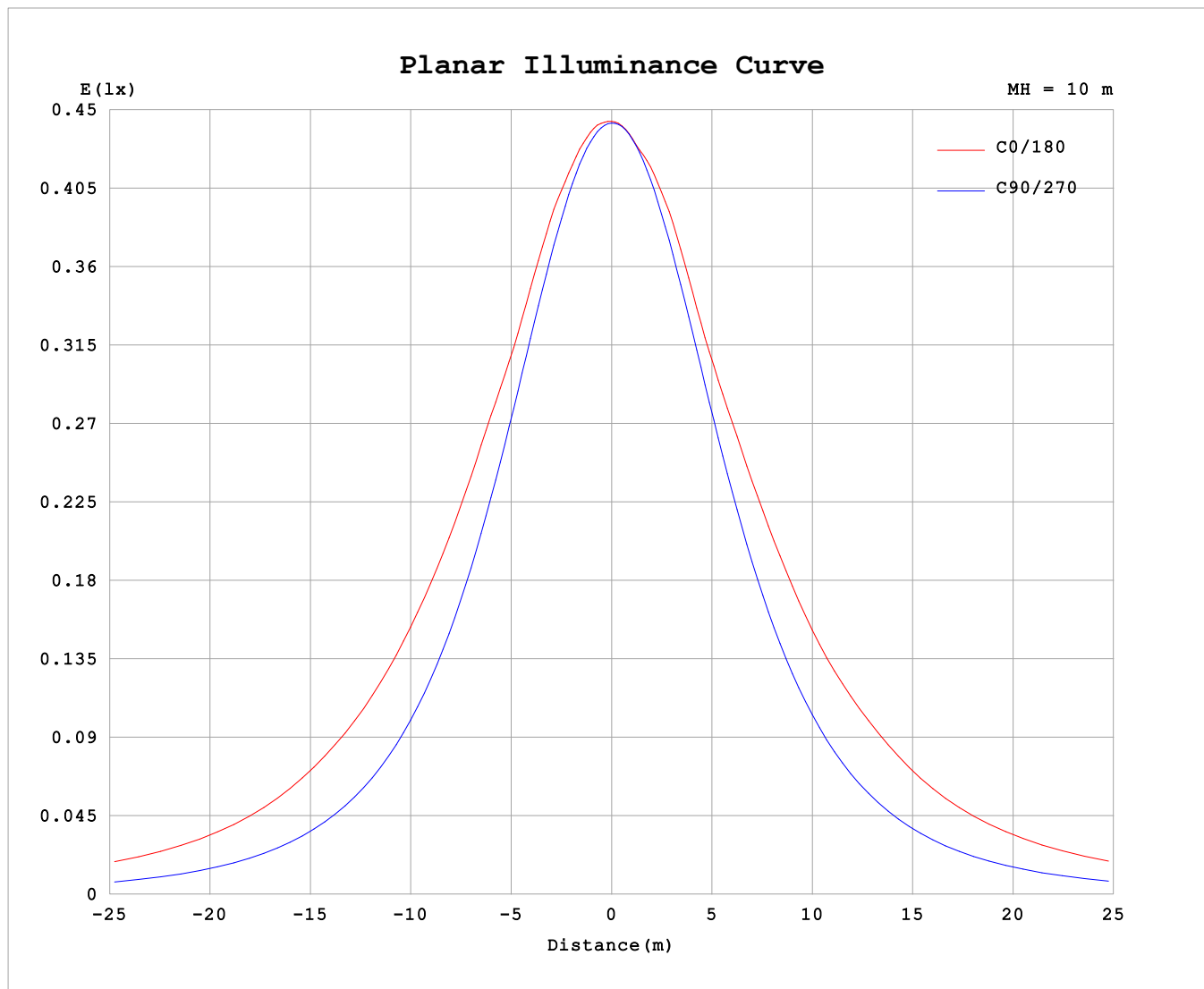
AvgL	cd/m2
L_0~180 (65) av	5360
L_0~180 (75) av	7520
L_0~180 (85) av	18721
L_90~270 (65) av	2311
L_90~270 (75) av	2280
L_90~270 (85) av	2594
L_45 (65) av	3995
L_45 (75) av	5368
L_45 (85) av	12056

Standard: GB/T 29293-2012

C Range: 0 - 360DEG
C Interval: 30.0DEG
Test Speed: HIGH
Temperature:25.3℃
Operators:
Test Date:2025-03-13

γ Range: 0 - 180DEG
γ Interval: 1.0DEG
Test System:EVERFINE GO-2000B_V1 SYSTEM V2.00.488
Humidity:65.0%
Test Distance:6.360m [K=1.0000]
Remarks:

Planar Illuminance Curve



C Range: 0 - 360DEG
C Interval: 30.0DEG
Test Speed: HIGH
Temperature: 25.3 °C
Operators:
Test Date: 2025-03-13

γ Range: 0 - 180DEG
 γ Interval: 1.0DEG
Test System: EVERFINE GO-2000B_V1 SYSTEM V2.00.488
Humidity: 65.0%
Test Distance: 6.360m [K=1.0000]
Remarks:

LUMINOUS DISTRIBUTION INTENSITY DATA

Test:U:24.00V I:0.4050A P:9.720W PF:1.000 Freq:0Hz Lamp Flux:252.086x1 lm																	
NAME: SF18-24V-5050-70-SPI-RGBW(4000K)-G									TYPE:						WEIGHT:		
SPEC.:									DIM.: Length=1m						SERIAL No.:		
MFR.: OLYMPIA lighting									SUR.:						Shielding Angle:		

Table--1

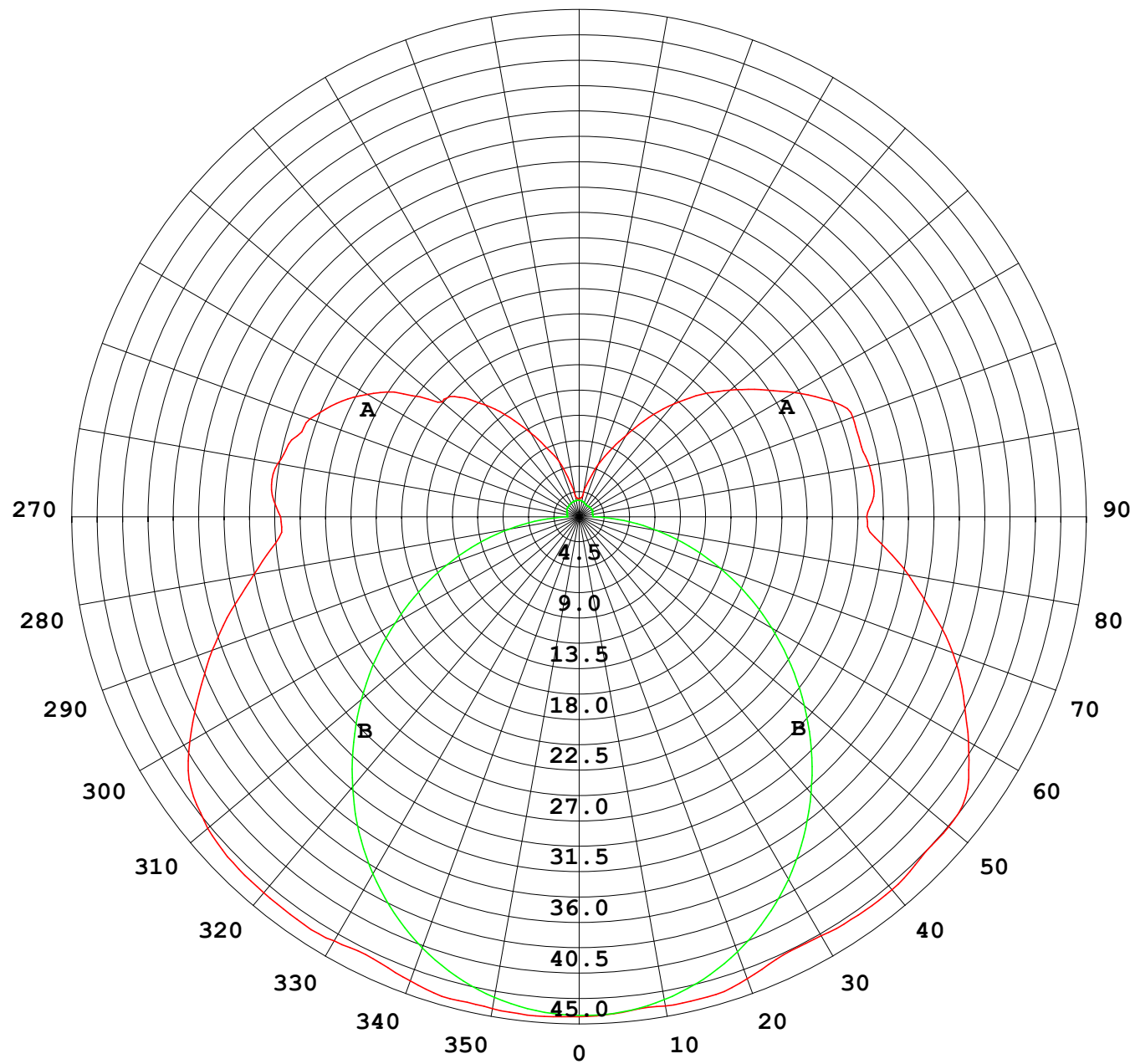
UNIT: cd

C (DEG) γ (DEG)	0	30	60	90	120	150	180	210	240	270	300	330						
0	44.3	44.3	44.3	44.3	44.3	44.3	44.3	44.3	44.3	44.3	44.3	44.3						
5	44.4	44.3	44.2	44.0	44.0	44.0	44.1	44.1	44.1	44.2	44.2	44.4						
10	44.3	44.0	43.7	43.4	43.4	43.7	44.0	43.7	43.5	43.6	43.9	44.2						
15	44.2	43.6	42.8	42.3	42.4	43.6	44.0	43.7	42.6	42.5	43.1	43.8						
20	43.8	43.2	41.6	40.8	41.5	43.1	43.6	43.2	41.8	41.1	41.9	43.4						
25	43.2	42.3	40.2	38.9	40.4	41.9	42.8	42.1	40.8	39.3	40.7	42.6						
30	43.4	41.3	38.7	36.6	38.7	41.0	42.9	41.2	39.2	37.2	39.2	41.7						
35	43.6	40.9	36.7	34.1	36.5	40.6	43.1	40.8	37.1	34.8	37.3	41.3						
40	43.5	40.2	34.5	31.3	34.1	39.9	43.1	40.2	34.8	32.1	35.2	40.6						
45	43.4	39.2	32.0	28.3	31.7	39.2	42.8	39.4	32.4	29.2	32.8	39.7						
50	43.0	38.3	29.4	25.3	29.0	37.9	42.8	38.2	29.8	26.1	30.2	38.8						
55	42.0	37.0	26.4	22.1	26.2	36.7	42.0	37.0	27.0	23.0	27.3	37.7						
60	39.8	35.3	23.8	18.9	23.7	35.4	39.8	35.8	24.4	19.8	24.8	36.1						
65	37.2	33.3	21.4	15.7	21.5	33.2	37.6	33.5	22.1	16.5	22.5	34.3						
70	34.6	30.8	19.0	12.5	19.1	30.6	35.2	30.9	19.7	13.3	20.3	32.1						
75	31.9	27.5	16.4	9.35	16.9	28.0	32.3	28.3	17.4	10.1	18.0	29.1						
80	29.2	24.6	13.6	6.31	14.4	25.0	29.6	25.2	14.9	7.02	15.4	26.1						
85	27.0	21.8	10.9	3.43	11.8	22.1	26.8	22.3	12.2	4.03	12.6	23.3						
90	26.5	20.8	9.07	1.05	9.96	20.4	25.5	20.1	9.84	1.34	10.2	21.7						
95	27.4	21.7	9.63	1.08	9.74	21.0	26.2	20.6	9.63	1.23	10.3	22.2						
100	27.1	22.4	8.25	1.11	9.42	21.9	26.1	21.6	9.31	1.23	8.81	22.4						
105	26.4	21.2	7.37	1.14	9.24	22.4	25.8	22.1	9.10	1.25	7.95	22.0						
110	25.4	19.7	7.02	1.18	9.23	21.4	25.8	21.2	9.11	1.29	7.75	20.5						
115	23.8	18.0	7.50	1.21	9.07	19.4	24.4	19.3	8.99	1.31	7.00	18.9						
120	21.7	15.5	7.17	1.25	8.37	17.5	22.0	17.4	8.33	1.31	6.82	16.9						
125	19.0	14.6	6.18	1.30	7.51	15.9	19.7	15.8	7.48	1.30	5.89	14.5						
130	15.9	13.7	5.45	1.34	6.49	14.2	17.5	14.1	6.42	1.29	5.33	13.6						
135	15.0	11.1	4.59	1.35	5.55	12.4	15.4	12.4	5.46	1.27	4.37	10.4						
140	13.0	8.25	3.81	1.37	4.70	10.4	13.0	10.4	4.60	1.24	3.58	8.26						
145	10.7	6.56	3.25	1.39	3.93	8.38	10.7	8.36	3.81	1.22	2.99	6.18						
150	8.57	5.31	2.67	1.42	3.16	6.67	8.35	6.68	3.03	1.23	2.37	4.56						
155	6.69	4.14	2.19	1.44	2.63	5.22	6.49	5.27	2.52	1.29	1.91	3.89						
160	5.23	3.06	1.91	1.45	2.25	3.89	4.90	3.92	2.16	1.34	1.76	2.79						
165	3.30	2.17	1.71	1.47	1.92	2.74	3.34	2.80	1.88	1.40	1.61	1.91						
170	1.85	1.75	1.64	1.48	1.79	2.03	1.91	2.12	1.76	1.43	1.57	1.66						
175	1.65	1.62	1.57	1.49	1.72	1.75	1.68	1.85	1.70	1.46	1.52	1.56						
180	1.57	1.57	1.53	1.50	1.51	1.50	1.57	1.58	1.53	1.48	1.50	1.49						

C Range: 0 - 360DEG
C Interval: 30.0DEG
Test Speed: HIGH
Temperature:25.3℃
Operators:
Test Date:2025-03-13

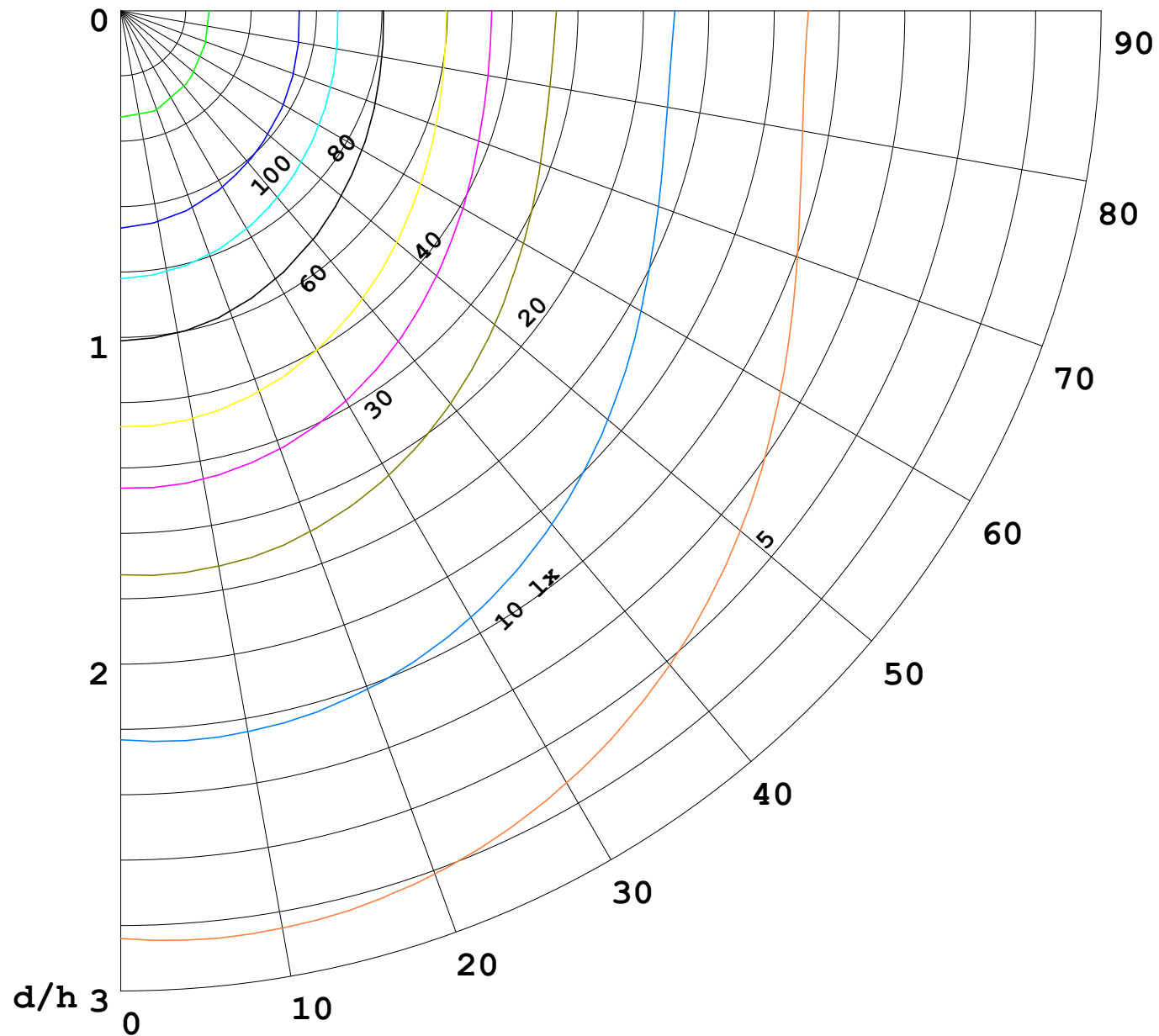
γ Range: 0 - 180DEG
γ Interval: 1.0DEG
Test System:EVERFINE GO-2000B_V1 SYSTEM V2.00.488
Humidity:65.0%
Test Distance:6.360m [K=1.0000]
Remarks:

I (cd)



1000 lm

$\kappa = 1$



F = 1000 lm
 K = 0.7
 Hcc = 0.8 m
 Hfc = 0.0 m
 Eave = 100 lx

	Pcc	Pw	Pfc
————	70	50	30
————	50	30	20

