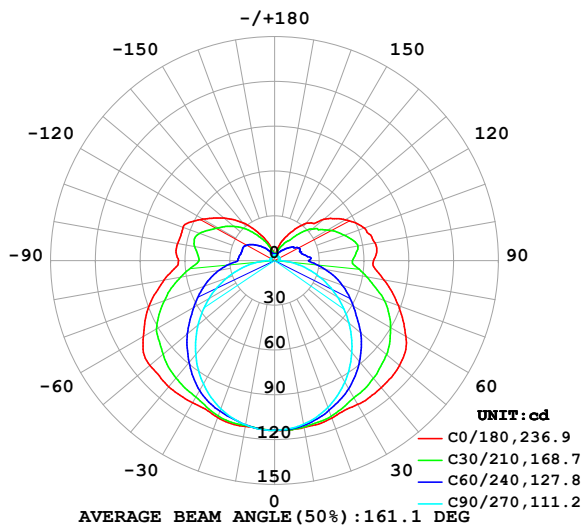


LUMINAIRE PHOTOMETRIC TEST REPORT

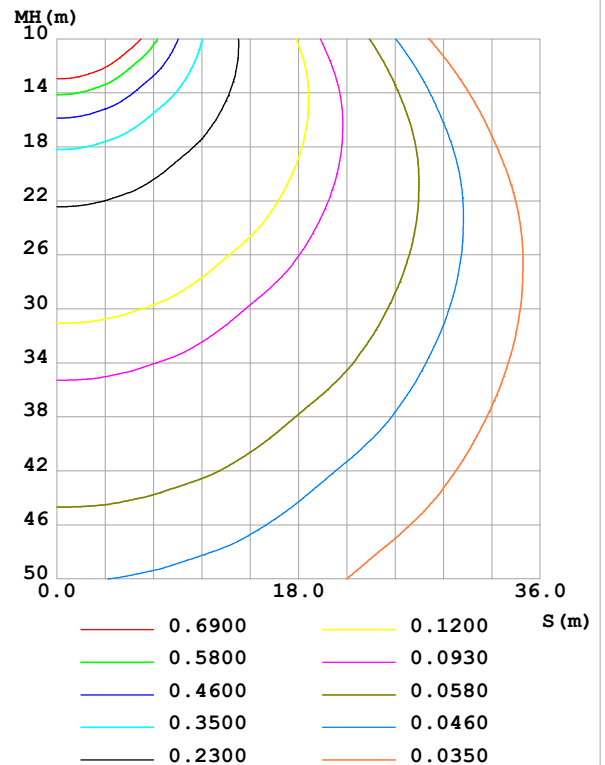
Test:U:24.00V I:0.9382A P:22.52W PF:1.000 Freq:0Hz Lamp Flux:644.273x1 lm		
NAME: SF18-24V-5050-70-SPI-RGBW(4000K)-ALL	TYPE:	WEIGHT:
SPEC.:	DIM.: Length=1m	SERIAL No.:
MFR.: OLympia lighting	SUR.:	Shielding Angle:

DATA OF LAMP		PHOTOMETRIC DATA Eff: 28.61 lm/W			
MODEL	5050	I _{max} (cd)	114.0	S/MH(C0/180)	1.50
NOMINAL POWER(W)	18	LOR(%)	100.0	S/MH(C90/270)	1.25
RATED VOLTAGE(V)	24	TOTAL FLUX(lm)	644.27	η UP,DN(C0-180)	13.2,36.4
NOMINAL FLUX(lm)	644.273	CIE CLASS	SEMI-D.	η UP,DN(C180-360)	13.3,37.1
LAMPS INSIDE	1	η up (%)	26.5	CIBSE SHR NOM	1.50
TEST VOLTAGE(V)		η down (%)	73.5	CIBSE SHR MAX	1.55

LUMINOUS INTENSITY DISTRIBUTION DIAGRAM



C0 PLANE ISOLUX DIAGRAM (UNIT:lx)



C Range: 0 - 360DEG
C Interval: 30.0DEG
Test Speed: HIGH
Temperature:25.3℃
Operators:
Test Date:2025-03-13

γ Range: 0 - 180DEG
γ Interval: 1.0DEG
Test System:EVERFINE GO-2000B_V1 SYSTEM V2.00.488
Humidity:65.0%
Test Distance:6.360m [K=1.0000]
Remarks:

ZONAL FLUX DIAGRAM

ZONAL FLUX DIAGRAM:

γ	C0	C45	C90	C135	C180	C225	C270	C315	γ	Φ zone	Φ total	%lum, lamp
10	113.5	112.7	111.4	111.7	112.9	112.0	111.8	113.1	0- 10	10.79	10.79	1.67,1.67
20	112.2	108.9	104.7	108.6	111.8	109.1	105.6	109.6	10- 20	31.38	42.17	6.55,6.55
30	111.3	102.7	94.09	102.3	109.9	103.1	95.49	103.8	20- 30	48.95	91.12	14.1,14.1
40	111.1	95.81	80.50	94.95	110.4	95.97	82.30	97.26	30- 40	62.55	153.7	23.9,23.9
50	109.4	86.67	64.98	85.82	109.2	87.03	66.97	88.60	40- 50	71.02	224.7	34.9,34.9
60	101.6	75.40	48.61	75.74	101.6	76.98	50.70	78.09	50- 60	73.46	298.1	46.3,46.3
70	88.25	63.42	32.09	63.48	89.67	64.44	34.08	67.01	60- 70	69.44	367.6	57.1,57.1
80	74.40	48.53	16.23	50.21	75.19	50.92	17.91	53.05	70- 80	59.63	427.2	66.3,66.3
90	66.28	37.61	2.696	38.41	64.44	37.80	3.354	40.61	80- 90	46.17	473.4	73.5,73.5
100	68.33	38.94	2.847	39.72	66.05	39.07	3.000	39.77	90-100	41.37	514.7	79.9,79.9
110	64.05	33.91	3.064	38.86	65.25	38.31	3.220	36.16	100-110	39.32	554.1	86,86
120	54.82	29.47	3.262	32.90	55.73	32.58	3.291	30.37	110-120	33.38	587.4	91.2,91.2
130	43.01	23.40	3.482	26.31	44.34	26.04	3.247	24.21	120-130	24.80	612.2	95,95
140	32.60	15.57	3.558	19.29	33.11	19.09	3.134	15.01	130-140	16.34	628.6	97.6,97.6
150	21.82	10.27	3.682	12.55	21.27	12.41	3.220	9.101	140-150	9.162	637.7	99,99
160	13.33	6.428	3.775	7.867	12.58	7.852	3.543	5.866	150-160	4.426	642.2	99.7,99.7
170	4.818	4.448	3.865	4.936	5.046	5.054	3.781	4.186	160-170	1.689	643.9	99.9,99.9
180	4.149	4.089	3.929	3.912	4.178	4.105	3.894	3.891	170-180	0.4152	644.3	100,100
DEG	LUMINOUS INTENSITY:cd									UNIT:lm		

Conical surface Flux(90deg): 188.47 lm

%lum = 29.3%

%lamp = 29.3%

Conical surface Flux(130deg): 333.75 lm

%lum = 51.8%

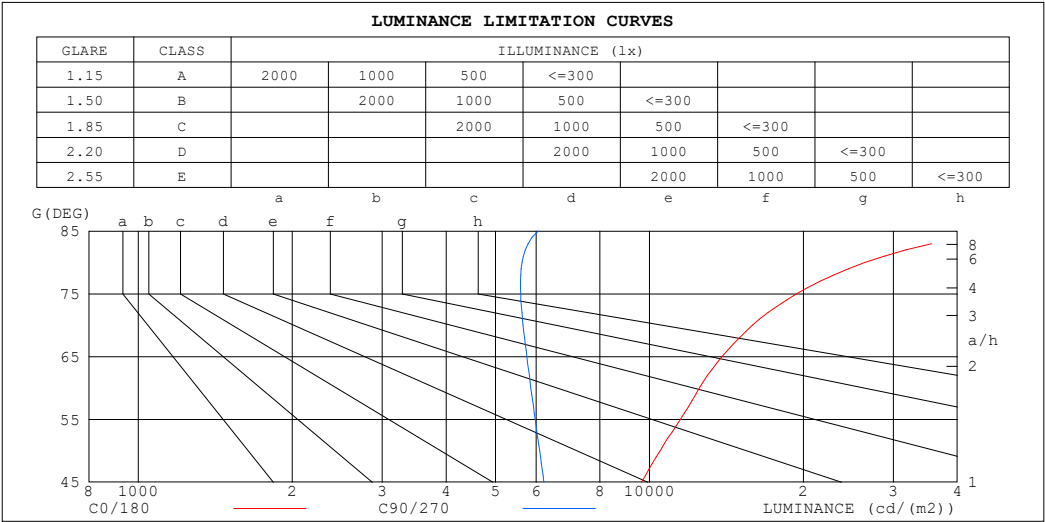
%lamp = 51.8%

C Range: 0 - 360DEG
 C Interval: 30.0DEG
 Test Speed: HIGH
 Temperature:25.3℃
 Operators:
 Test Date:2025-03-13

γ Range: 0 - 180DEG
 γ Interval: 1.0DEG
 Test System:EVERFINE GO-2000B_V1 SYSTEM V2.00.488
 Humidity:65.0%
 Test Distance:6.360m [K=1.0000]
 Remarks:

LUMINANCE LIMITATION CURVES

Test:U:24.00V I:0.9382A P:22.52W PF:1.000 Freq:0Hz Lamp Flux:644.273x1 lm		
NAME: SF18-24V-5050-70-SPI-RGBW(4000K)-ALL	TYPE:	WEIGHT:
SPEC.:	DIM.: Length=1m	SERIAL No.:
MFR.: OLympia lighting	SUR.:	Shielding Angle:



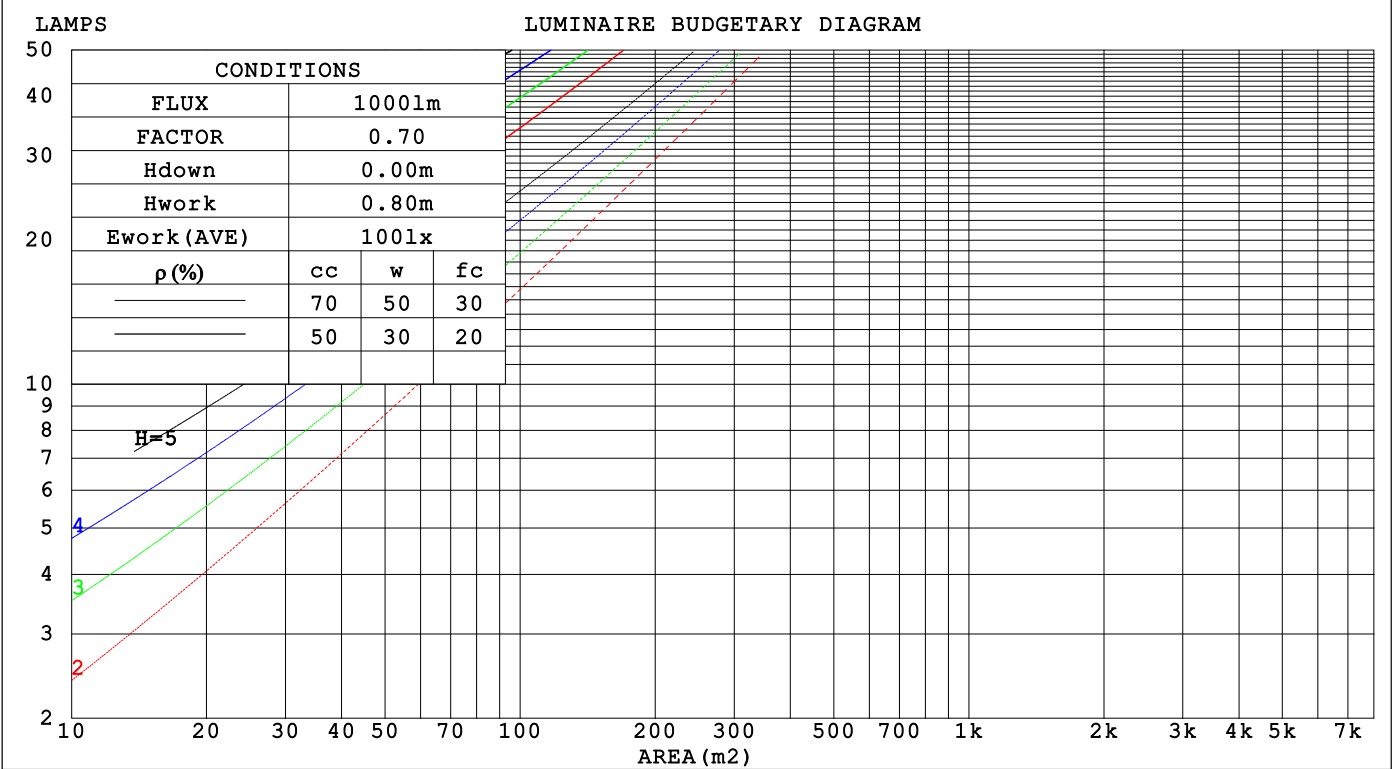
LUMINANCE cd/(m2)		
G (DEG)	C0/180	C90/270
85	48046	6059
80	26425	5634
75	19403	5598
70	15914	5656
65	13869	5753
60	12527	5860
55	11499	5973
50	10494	6094
45	9648	6214

C Range: 0 - 360DEG	γ Range: 0 - 180DEG
C Interval: 30.0DEG	γ Interval: 1.0DEG
Test Speed: HIGH	Test System:EVERFINE GO-2000B_V1 SYSTEM V2.00.488
Temperature:25.3℃	Humidity:65.0%
Operators:	Test Distance:6.360m [K=1.0000]
Test Date:2025-03-13	Remarks:

CU AND LUMINAIRE BUDGETARY ESTIMATE DIAGRAM

Test:U:24.00V I:0.9382A P:22.52W PF:1.000 Freq:0Hz																	
Lamp Flux:644.273x1 lm																	
NAME: SF18-24V-5050-70-SPI-RGBW(4000K)-ALL									TYPE:						WEIGHT:		
SPEC.:									DIM.: Length=1m						SERIAL No.:		
MFR.: OLYMPIA lighting									SUR.:						Shielding Angle:		

pcc	80%			70%			50%			30%			10%			0
pw	50%	30%	10%	50%	30%	10%	50%	30%	10%	50%	30%	10%	50%	30%	10%	0
pfc	20%			20%			20%			20%			20%			0
RCR	RCR:Room Cavity Ratio Coefficients of Utilization(CU)															
0.0	1.13	1.13	1.13	1.07	1.07	1.07	.96	.96	.96	.87	.87	.87	.78	.78	.78	.73
1.0	.94	.88	.84	.89	.84	.80	.80	.76	.72	.71	.68	.65	.63	.61	.59	.55
2.0	.80	.72	.66	.76	.69	.63	.68	.62	.57	.60	.56	.52	.54	.50	.47	.43
3.0	.69	.60	.53	.66	.57	.51	.59	.52	.47	.52	.47	.42	.46	.42	.38	.35
4.0	.61	.51	.44	.57	.49	.42	.52	.44	.39	.46	.40	.35	.41	.36	.32	.29
5.0	.54	.44	.37	.51	.42	.36	.46	.39	.33	.41	.35	.30	.36	.31	.28	.25
6.0	.48	.39	.32	.46	.37	.31	.41	.34	.28	.37	.31	.26	.33	.28	.24	.21
7.0	.43	.34	.28	.41	.33	.27	.37	.30	.25	.33	.27	.23	.30	.25	.21	.18
8.0	.39	.30	.24	.37	.29	.24	.34	.27	.22	.30	.25	.20	.27	.22	.19	.16
9.0	.36	.27	.22	.34	.26	.21	.31	.24	.19	.28	.22	.18	.25	.20	.17	.14
10.0	.33	.25	.19	.31	.24	.19	.28	.22	.18	.26	.20	.16	.23	.18	.15	.13



C Range: 0 - 360DEG
C Interval: 30.0DEG
Test Speed: HIGH
Temperature:25.3℃
Operators:
Test Date:2025-03-13

γ Range: 0 - 180DEG
γ Interval: 1.0DEG
Test System:EVERFINE GO-2000B_V1 SYSTEM V2.00.488
Humidity:65.0%
Test Distance:6.360m [K=1.0000]
Remarks:

WEC AND CCEC

Test:U:24.00V I:0.9382A P:22.52W PF:1.000 Freq:0Hz Lamp Flux:644.273x1 lm		
NAME: SF18-24V-5050-70-SPI-RGBW(4000K)-ALL	TYPE:	WEIGHT:
SPEC.:	DIM.: Length=1m	SERIAL No.:
MFR.: OLympia lighting	SUR.:	Shielding Angle:

pcc	80%			70%			50%			30%			10%			0														
pw	50%	30%	10%	50%	30%	10%	50%	30%	10%	50%	30%	10%	50%	30%	10%	0														
pfc	20%			20%			20%			20%			20%			0														
RCR	RCR:Room Cavity Ratio															Wall Exitance Coefficients(WEC)														
0.0																														
1.0	.383	.218	.069	.368	.210	.067	.339	.194	.062	.313	.180	.058	.288	.167	.054															
2.0	.331	.182	.056	.317	.175	.054	.291	.162	.050	.268	.150	.047	.245	.139	.044															
3.0	.294	.157	.047	.282	.151	.045	.258	.140	.042	.236	.129	.040	.216	.120	.037															
4.0	.265	.138	.040	.253	.133	.039	.232	.123	.037	.212	.114	.034	.193	.105	.032															
5.0	.240	.123	.035	.230	.118	.034	.210	.110	.032	.192	.101	.030	.175	.094	.028															
6.0	.220	.110	.032	.211	.106	.031	.193	.099	.029	.176	.091	.027	.160	.084	.025															
7.0	.203	.100	.028	.194	.097	.028	.178	.090	.026	.162	.083	.024	.148	.077	.023															
8.0	.188	.092	.026	.180	.089	.025	.165	.082	.024	.151	.076	.022	.137	.070	.021															
9.0	.175	.085	.024	.168	.082	.023	.154	.076	.022	.141	.070	.020	.128	.065	.019															
10.0	.164	.079	.022	.157	.076	.021	.144	.071	.020	.132	.065	.019	.120	.060	.017															

pcc	80%			70%			50%			30%			10%			0
pw	50%	30%	10%	50%	30%	10%	50%	30%	10%	50%	30%	10%	50%	30%	10%	0
pfc	20%			20%			20%			20%			20%			0
RCR	RCR:Room Cavity Ratio						Ceiling Cavity Exitance Coefficients (CCEC)									
0.0	.393	.393	.393	.336	.336	.336	.229	.229	.229	.132	.132	.132	.042	.042	.042	
1.0	.389	.359	.332	.333	.308	.286	.228	.212	.198	.131	.123	.115	.042	.040	.037	
2.0	.383	.337	.298	.328	.290	.258	.225	.201	.180	.130	.117	.105	.042	.038	.034	
3.0	.375	.321	.277	.322	.277	.240	.221	.192	.169	.128	.112	.099	.041	.036	.033	
4.0	.368	.308	.263	.316	.267	.229	.217	.186	.161	.126	.109	.095	.040	.035	.031	
5.0	.360	.299	.254	.309	.259	.221	.213	.181	.156	.123	.106	.092	.040	.035	.030	
6.0	.353	.291	.247	.303	.252	.215	.209	.176	.152	.121	.104	.090	.039	.034	.030	
7.0	.346	.285	.242	.298	.247	.211	.206	.173	.149	.119	.102	.089	.039	.033	.029	
8.0	.339	.279	.238	.292	.242	.207	.202	.170	.147	.118	.100	.088	.038	.033	.029	
9.0	.333	.274	.235	.287	.238	.205	.199	.167	.145	.116	.099	.087	.038	.032	.029	
10.0	.327	.270	.232	.282	.235	.203	.196	.165	.144	.114	.098	.086	.037	.032	.029	

C Range: 0 - 360DEG
C Interval: 30.0DEG
Test Speed: HIGH
Temperature:25.3℃
Operators:
Test Date:2025-03-13

γ Range: 0 - 180DEG
γ Interval: 1.0DEG
Test System:EVERFINE GO-2000B_V1 SYSTEM V2.00.488
Humidity:65.0%
Test Distance:6.360m [K=1.0000]
Remarks:

UGR(Unified Glare Rating) Table

Test:U:24.00V I:0.9382A P:22.52W PF:1.000 Freq:0Hz Lamp Flux:644.273x1 lm											
NAME: SF18-24V-5050-70-SPI-RGBW(4000K)-ALL						TYPE:		WEIGHT:			
SPEC.:						DIM.: Length=1m		SERIAL No.:			
MFR.: OLympia lighting						SUR.:		Shielding Angle:			
ceiling/cavity	0.7	0.7	0.5	0.5	0.3	0.7	0.7	0.5	0.5	0.3	
walls	0.5	0.3	0.5	0.3	0.3	0.5	0.3	0.5	0.3	0.3	
working plane	0.2	0.2	0.2	0.2	0.2	0.2	0.2	0.2	0.2	0.2	
Room dimensions		Viewed crosswise					Viewed endwise				
x = 2H y = 2H	2H	21.7	23.0	22.3	23.6	24.3	18.5	19.8	19.1	20.4	21.1
	3H	24.5	25.6	25.1	26.3	27.1	20.1	21.3	20.8	22.0	22.7
	4H	25.9	27.1	26.6	27.7	28.5	20.9	22.0	21.5	22.6	23.4
	6H	27.6	28.6	28.2	29.3	30.1	21.5	22.5	22.1	23.2	24.0
	8H	28.4	29.5	29.1	30.2	31.0	21.7	22.7	22.4	23.4	24.2
	12H	29.5	30.5	30.2	31.2	32.0	21.9	22.9	22.6	23.6	24.4
4H	2H	22.2	23.3	22.8	23.9	24.7	19.9	21.0	20.5	21.7	22.4
	3H	25.2	26.2	25.9	26.9	27.7	21.7	22.7	22.4	23.4	24.2
	4H	26.9	27.8	27.6	28.5	29.3	22.6	23.5	23.3	24.2	25.1
	6H	28.7	29.5	29.4	30.2	31.1	23.3	24.1	24.1	24.9	25.8
	8H	29.7	30.4	30.5	31.2	32.1	23.7	24.4	24.4	25.2	26.1
	12H	30.9	31.6	31.6	32.3	33.3	23.9	24.6	24.7	25.4	26.3
8H	4H	27.1	27.9	27.9	28.6	29.5	23.7	24.5	24.5	25.3	26.2
	6H	29.3	29.9	30.0	30.7	31.6	24.8	25.4	25.6	26.2	27.2
	8H	30.5	31.0	31.3	31.9	32.8	25.3	25.9	26.1	26.7	27.7
	12H	31.9	32.4	32.7	33.2	34.2	25.8	26.2	26.6	27.1	28.1
12H	4H	27.1	27.8	27.9	28.6	29.5	24.1	24.8	24.9	25.6	26.5
	6H	29.3	29.9	30.1	30.7	31.7	25.4	26.0	26.2	26.8	27.8
	8H	30.7	31.2	31.5	32.0	33.0	26.1	26.6	26.9	27.4	28.4
Variations with the observer position at spacings(CIE Pub.117):											
S = 1.0H		+ 0.1 / - 0.1					+ 0.1 / - 0.1				
1.5H		+ 0.2 / - 0.2					+ 0.2 / - 0.3				
2.0H		+ 0.2 / - 0.3					+ 0.2 / - 0.4				

CIE Pub.117, 644.3 lm Total Lamp Luminous Flux Correct (8log(F/F0) = -1.5)
Area: 0.0165 m2

C Range: 0 - 360DEG
C Interval: 30.0DEG
Test Speed: HIGH
Temperature:25.3℃
Operators:
Test Date:2025-03-13

γ Range: 0 - 180DEG
γ Interval: 1.0DEG
Test System:EVERFINE GO-2000B_V1 SYSTEM V2.00.488
Humidity:65.0%
Test Distance:6.360m [K=1.0000]
Remarks:

UTILIZATION FACTORS TABLE

Test:U:24.00V I:0.9382A P:22.52W PF:1.000 Freq:0Hz Lamp Flux:644.273x1 lm		
NAME: SF18-24V-5050-70-SPI-RGBW(4000K)-ALL	TYPE:	WEIGHT:
SPEC.:	DIM.: Length=1m	SERIAL No.:
MFR.: OLympia lighting	SUR.:	Shielding Angle:

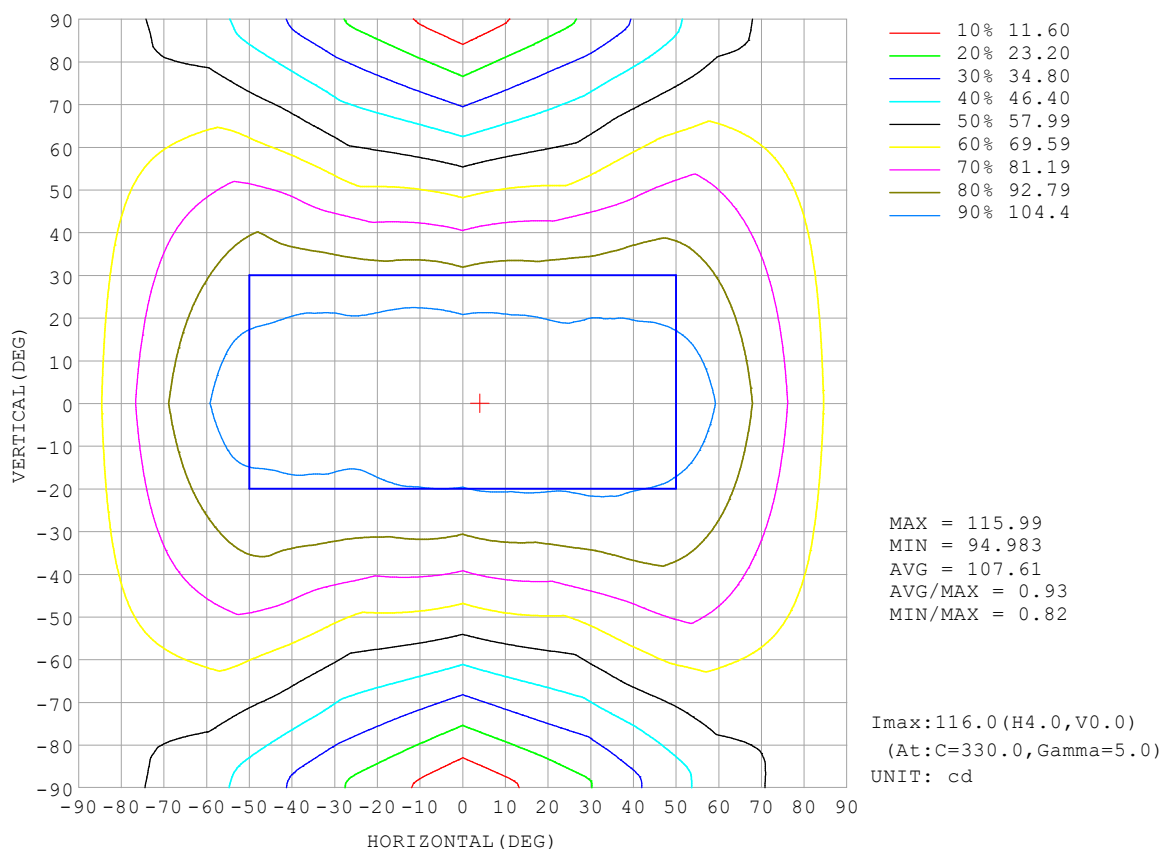
REFLECTANCE										
Ceiling	0.8	0.8	0.8	0.7	0.7	0.7	0.5	0.5	0.5	0
Walls	0.7	0.5	0.3	0.7	0.5	0.3	0.7	0.5	0.3	0
Working plane	0.2	0.2	0.2	0.2	0.2	0.2	0.2	0.2	0.2	0
ROOM INDEX	UTILIZATION FACTORS (PERCENT) $k(RI) \times RCR = 5$									
$k = 0.60$	45	32	25	43	32	25	41	30	24	17
0.80	54	40	32	52	40	32	48	38	31	22
1.00	61	48	40	59	47	39	55	47	37	28
1.25	68	55	47	66	54	45	60	50	43	33
1.50	74	61	52	70	59	51	64	55	48	36
2.00	81	70	61	77	67	59	70	62	55	42
2.50	86	75	67	82	72	65	74	66	60	46
3.00	89	80	72	85	77	70	77	70	65	49
4.00	94	86	79	90	82	76	81	75	70	53
5.00	97	90	84	93	86	81	84	79	74	56
ROOM INDEX	UF(total)									Direct
According to DIN EN 13032-2 2004			Suspended					SHRNOM = 1.25		

C Range: 0 - 360DEG
 C Interval: 30.0DEG
 Test Speed: HIGH
 Temperature: 25.3°C
 Operators:
 Test Date: 2025-03-13

γ Range: 0 - 180DEG
 γ Interval: 1.0DEG
 Test System: EVERFINE GO-2000B_V1 SYSTEM V2.00.488
 Humidity: 65.0%
 Test Distance: 6.360m [K=1.0000]
 Remarks:

ISOCANDELA DIAGRAM

Test:U:24.00V I:0.9382A P:22.52W PF:1.000 Freq:0Hz Lamp Flux:644.273x1 lm		
NAME: SF18-24V-5050-70-SPI-RGBW(4000K)-ALL	TYPE:	WEIGHT:
SPEC.:	DIM.: Length=1m	SERIAL No.:
MFR.: OLympia lighting	SUR.:	Shielding Angle:

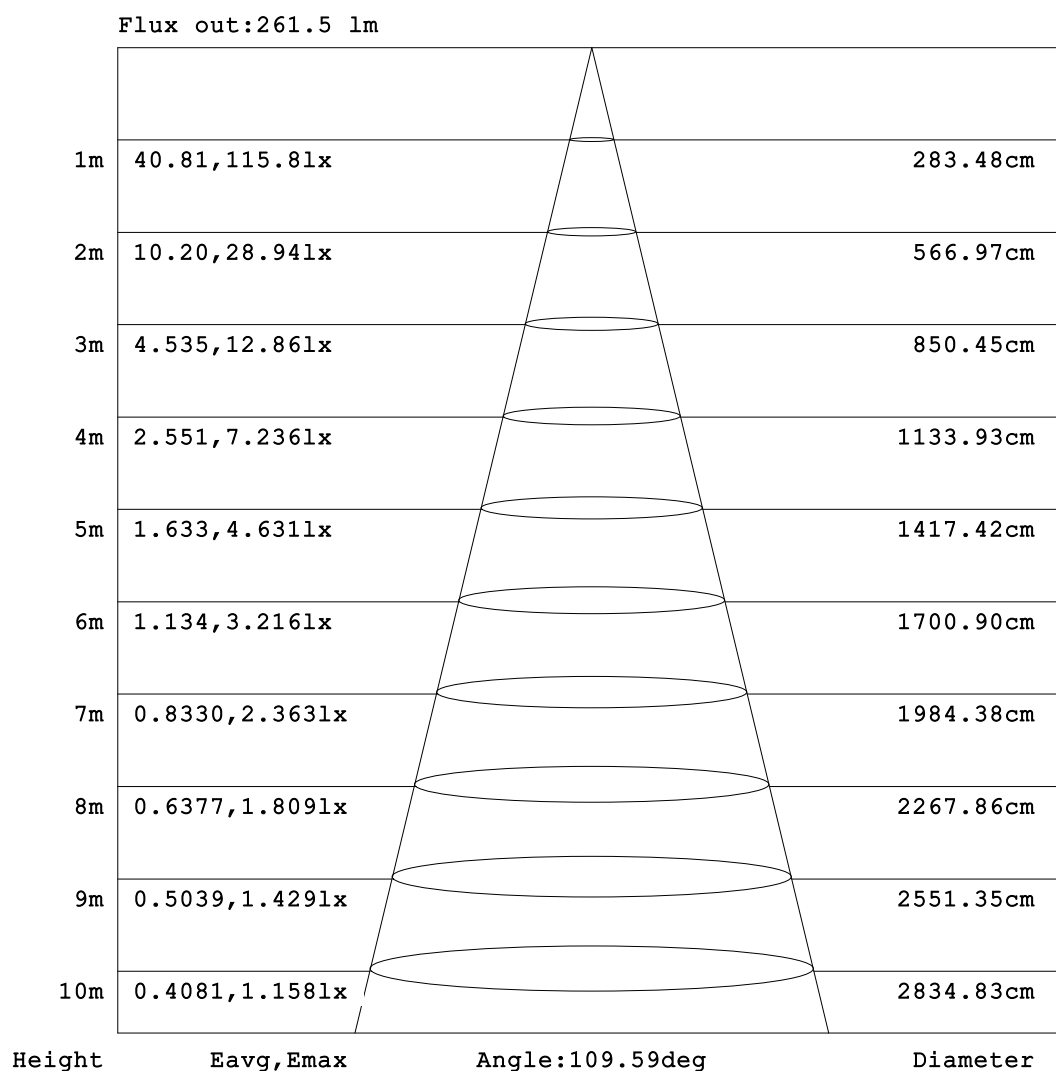


C Range: 0 - 360DEG
C Interval: 30.0DEG
Test Speed: HIGH
Temperature:25.3℃
Operators:
Test Date:2025-03-13

γ Range: 0 - 180DEG
γ Interval: 1.0DEG
Test System:EVERFINE GO-2000B_V1 SYSTEM V2.00.488
Humidity:65.0%
Test Distance:6.360m [K=1.0000]
Remarks:

AAI Figure

Test:U:24.00V I:0.9382A P:22.52W PF:1.000 Freq:0Hz Lamp Flux:644.273lx 1m		
NAME: SF18-24V-5050-70-SPI-RGBW(4000K)-ALL	TYPE:	WEIGHT:
SPEC.:	DIM.: Length=1m	SERIAL No.:
MFR.: OLympia lighting	SUR.:	Shielding Angle:



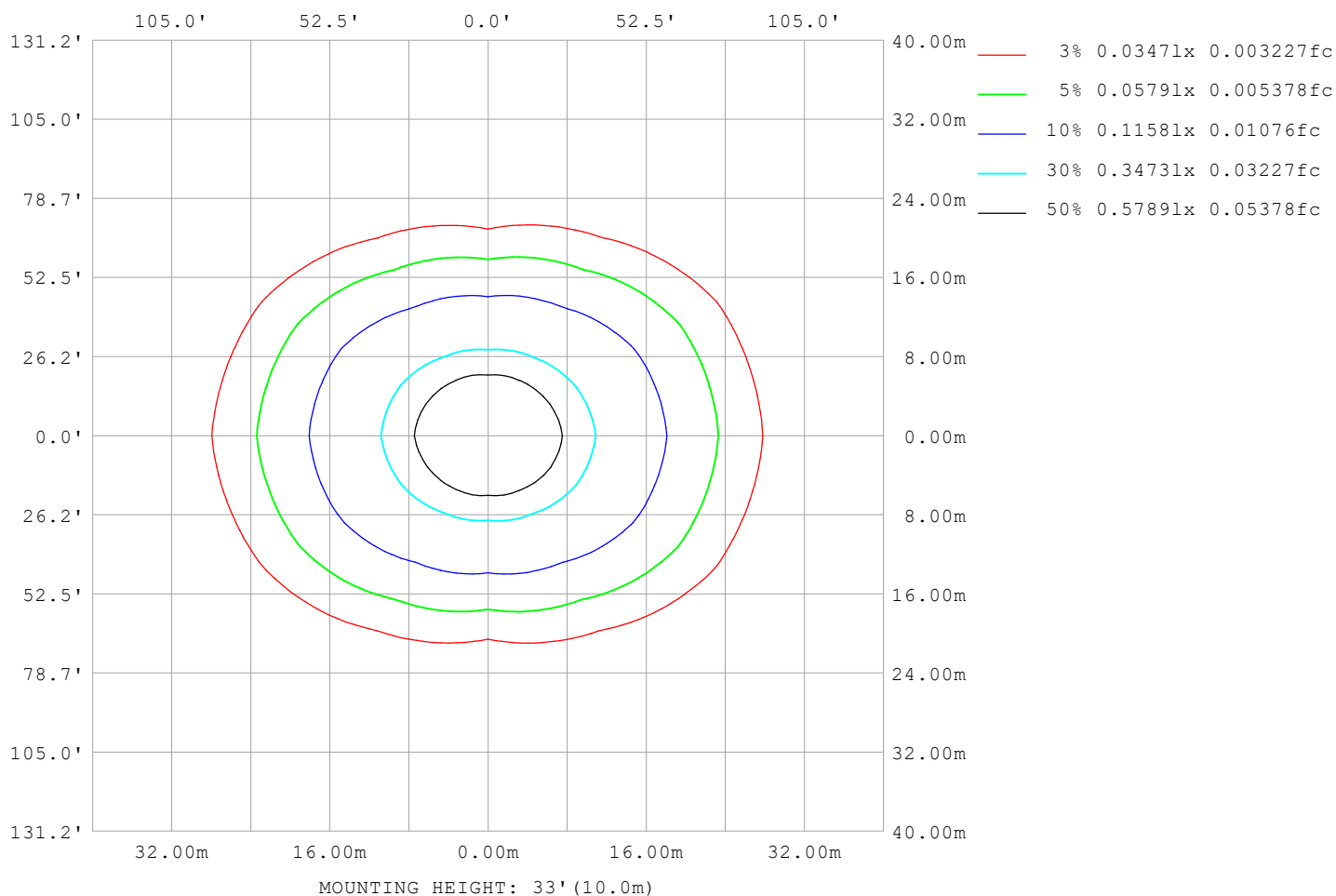
Note: The Curves indicate the illuminated area and the average illumination when the luminaire is at different distance.

C Range: 0 - 360DEG
C Interval: 30.0DEG
Test Speed: HIGH
Temperature: 25.3°C
Operators:
Test Date: 2025-03-13

γ Range: 0 - 180DEG
γ Interval: 1.0DEG
Test System: EVERFINE GO-2000B_V1 SYSTEM V2.00.488
Humidity: 65.0%
Test Distance: 6.360m [K=1.0000]
Remarks:

ISOLUX DIAGRAM

Test:U:24.00V I:0.9382A P:22.52W PF:1.000 Freq:0Hz Lamp Flux:644.273x1 lm		
NAME: SF18-24V-5050-70-SPI-RGBW(4000K)-ALL	TYPE:	WEIGHT:
SPEC.:	DIM.: Length=1m	SERIAL No.:
MFR.: OLympia lighting	SUR.:	Shielding Angle:



C Range: 0 - 360DEG
C Interval: 30.0DEG
Test Speed: HIGH
Temperature: 25.3°C
Operators:
Test Date: 2025-03-13

γ Range: 0 - 180DEG
γ Interval: 1.0DEG
Test System: EVERFINE GO-2000B_V1 SYSTEM V2.00.488
Humidity: 65.0%
Test Distance: 6.360m [K=1.0000]
Remarks:

LED Avg.L Report

Test:U:24.00V I:0.9382A P:22.52W PF:1.000 Freq:0Hz Lamp Flux:644.273x1 lm		
NAME: SF18-24V-5050-70-SPI-RGBW(4000K)-ALL	TYPE:	WEIGHT:
SPEC.:	DIM.: Length=1m	SERIAL No.:
MFR.: OLympia lighting	SUR.:	Shielding Angle:

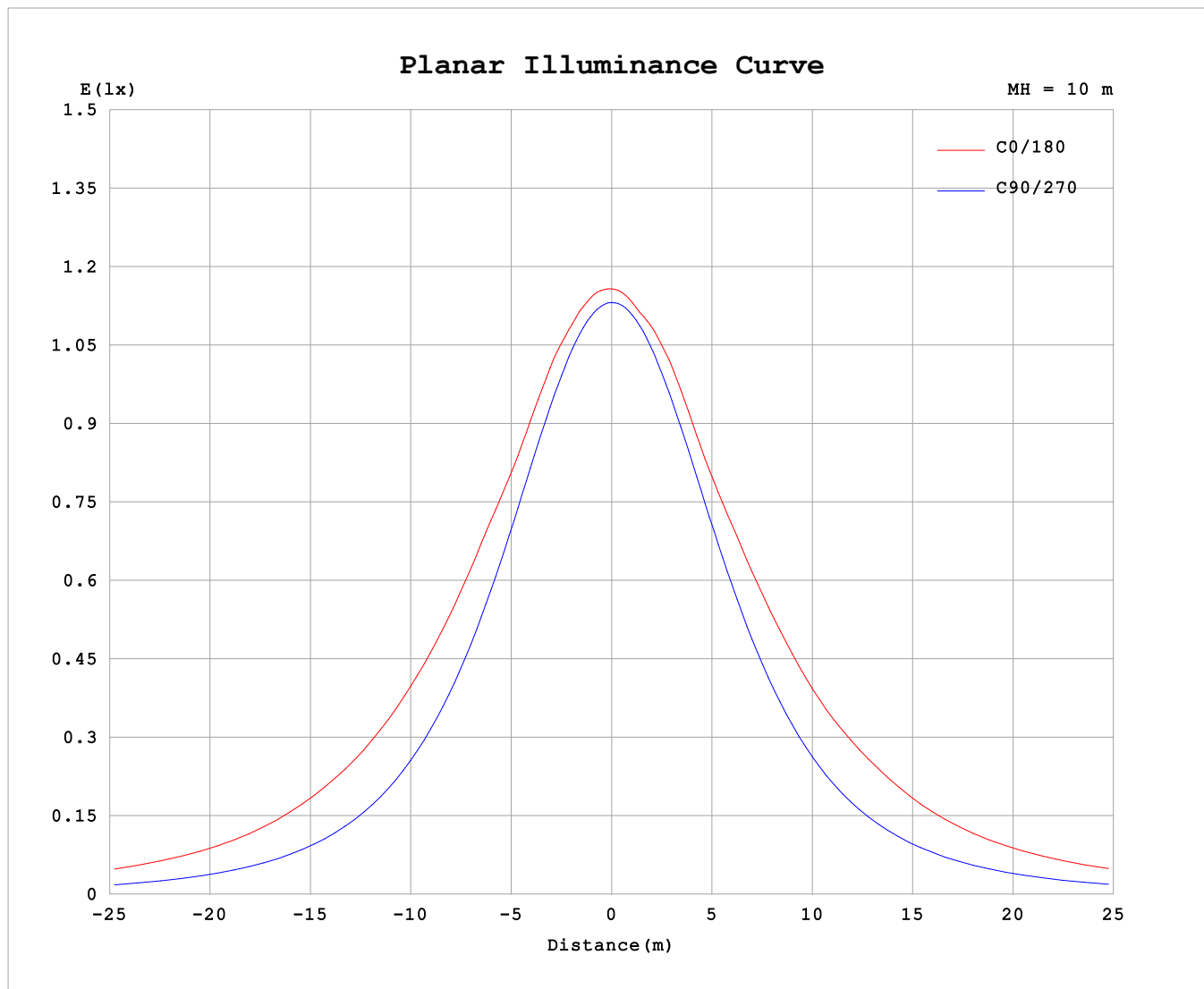
AvgL	cd/m2
L_0~180 (65) av	13681
L_0~180 (75) av	19167
L_0~180 (85) av	47170
L_90~270 (65) av	5932
L_90~270 (75) av	5844
L_90~270 (85) av	6597
L_45 (65) av	10196
L_45 (75) av	13672
L_45 (85) av	30702

Standard: GB/T 29293-2012

C Range: 0 - 360DEG
C Interval: 30.0DEG
Test Speed: HIGH
Temperature:25.3℃
Operators:
Test Date:2025-03-13

γ Range: 0 - 180DEG
γ Interval: 1.0DEG
Test System:EVERFINE GO-2000B_V1 SYSTEM V2.00.488
Humidity:65.0%
Test Distance:6.360m [K=1.0000]
Remarks:

Planar Illuminance Curve



C Range: 0 - 360DEG
C Interval: 30.0DEG
Test Speed: HIGH
Temperature: 25.3 °C
Operators:
Test Date: 2025-03-13

γ Range: 0 - 180DEG
 γ Interval: 1.0DEG
Test System: EVERFINE GO-2000B_V1 SYSTEM V2.00.488
Humidity: 65.0%
Test Distance: 6.360m [K=1.0000]
Remarks:

LUMINOUS DISTRIBUTION INTENSITY DATA

Test:U:24.00V I:0.9382A P:22.52W PF:1.000 Freq:0Hz Lamp Flux:644.273x1 lm		
NAME: SF18-24V-5050-70-SPI-RGBW(4000K)-ALL	TYPE:	WEIGHT:
SPEC.:	DIM.: Length=1m	SERIAL No.:
MFR.: OLYMPIA lighting	SUR.:	Shielding Angle:

Table--1

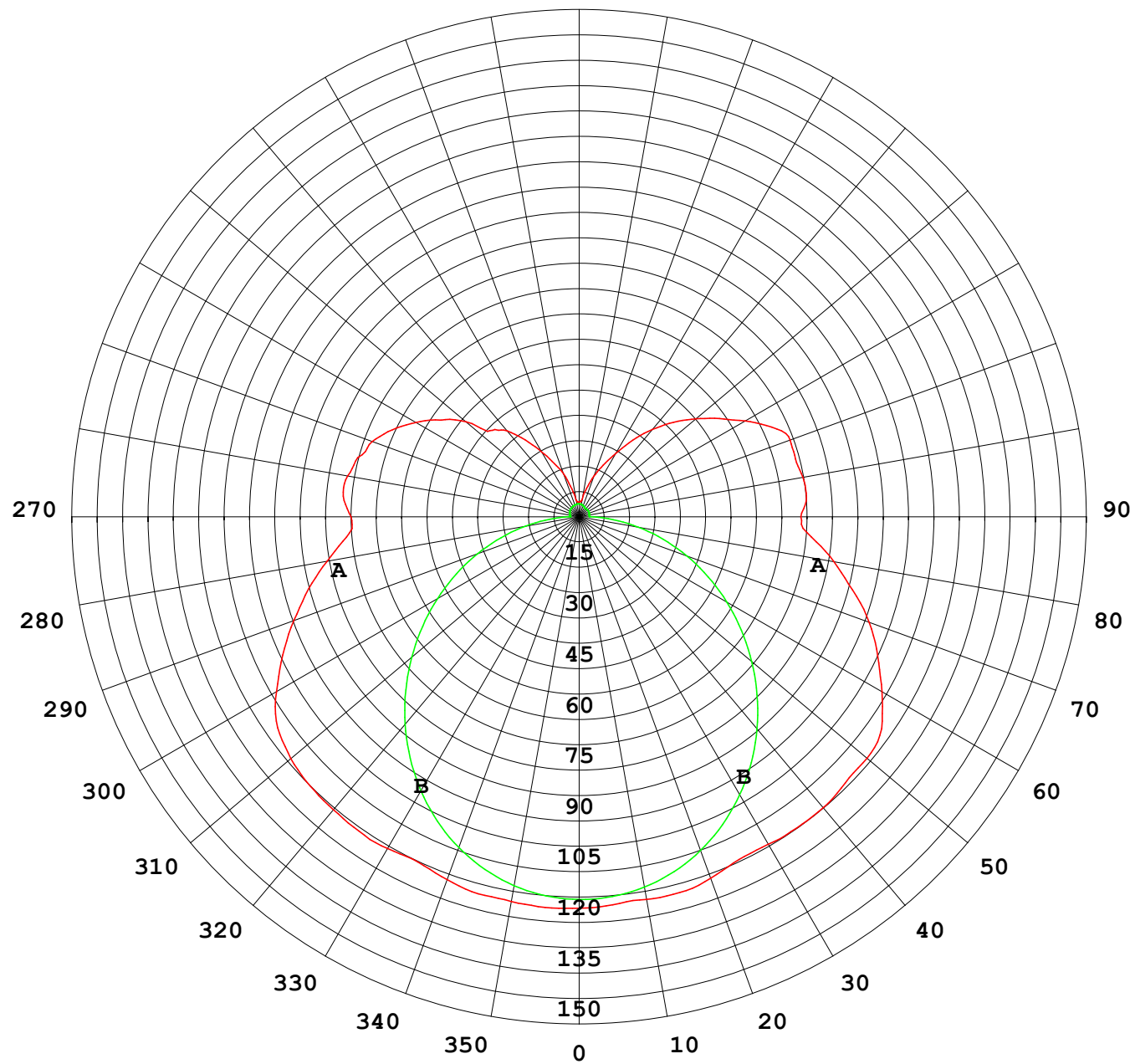
UNIT: cd

C (DEG) γ (DEG)	0	30	60	90	120	150	180	210	240	270	300	330							
0	114	114	114	114	114	114	114	114	114	114	114	114							
5	114	114	113	113	113	113	113	113	113	113	113	114							
10	114	113	112	111	111	112	113	112	112	112	113	113							
15	113	112	110	109	109	112	113	112	109	109	111	112							
20	112	111	107	105	107	111	112	111	107	106	108	112							
25	111	109	103	99.8	104	108	110	108	105	101	104	109							
30	111	106	99.3	94.1	99.3	105	110	106	101	95.5	101	107							
35	112	105	94.2	87.6	93.7	104	110	105	95.2	89.2	95.9	106							
40	111	103	88.6	80.5	87.6	102	110	103	89.2	82.3	90.4	104							
45	111	100	82.1	72.9	81.4	100	109	101	83.0	74.8	84.2	102							
50	109	97.9	75.3	65.0	74.6	97.1	109	97.6	76.4	67.0	77.6	99.6							
55	107	94.4	67.6	56.8	67.4	94.1	107	94.4	69.1	58.9	70.1	96.6							
60	102	89.8	60.9	48.6	61.0	90.6	102	91.4	62.5	50.7	63.7	92.5							
65	95.0	84.6	54.7	40.3	55.0	84.7	95.8	85.4	56.4	42.4	57.8	87.8							
70	88.3	78.4	48.3	32.1	49.0	78.0	89.7	78.5	50.2	34.1	52.0	82.0							
75	81.4	70.0	41.8	24.0	43.1	71.4	82.3	71.8	44.2	25.9	46.2	74.2							
80	74.4	62.6	34.3	16.2	36.8	63.6	75.2	63.9	37.8	17.9	39.4	66.7							
85	67.9	55.7	27.7	8.76	30.0	56.2	67.8	56.3	30.9	10.2	32.1	59.5							
90	66.3	52.2	22.9	2.70	25.3	51.6	64.4	50.7	24.8	3.35	26.0	55.3							
95	68.8	54.7	24.5	2.77	24.7	53.1	66.3	51.9	24.3	3.07	26.3	55.9							
100	68.3	56.7	21.0	2.85	23.9	55.5	66.0	54.5	23.5	3.00	22.5	57.1							
105	66.6	54.0	18.8	2.96	23.4	56.6	65.1	55.7	23.0	3.08	20.2	56.0							
110	64.0	49.8	17.9	3.06	23.5	54.2	65.3	53.5	23.0	3.22	20.0	52.4							
115	59.9	45.8	18.9	3.16	23.0	49.3	61.7	48.6	22.8	3.26	18.4	48.4							
120	54.8	41.1	17.7	3.26	21.3	44.6	55.7	44.0	21.1	3.29	17.3	43.5							
125	49.0	36.0	15.8	3.39	19.1	40.5	49.8	40.0	18.9	3.26	15.2	37.2							
130	43.0	32.8	13.9	3.48	16.5	36.1	44.3	35.7	16.3	3.25	13.7	34.8							
135	35.5	28.1	11.7	3.53	14.1	31.6	38.9	31.3	13.9	3.20	11.2	26.5							
140	32.6	21.3	9.75	3.56	12.0	26.6	33.1	26.4	11.7	3.13	9.25	20.8							
145	27.3	16.4	8.33	3.63	10.03	21.4	27.2	21.2	9.74	3.11	7.76	15.8							
150	21.8	13.6	6.88	3.68	8.07	17.0	21.3	17.0	7.80	3.22	6.13	12.1							
155	17.1	10.7	5.64	3.73	6.73	13.4	16.6	13.4	6.56	3.40	4.99	10.03							
160	13.3	7.91	4.93	3.78	5.76	9.98	12.6	10.0	5.64	3.54	4.59	7.15							
165	8.39	5.66	4.44	3.83	4.93	7.09	8.66	7.21	4.92	3.68	4.20	4.89							
170	4.82	4.63	4.26	3.87	4.61	5.27	5.05	5.48	4.63	3.78	4.08	4.29							
175	4.31	4.29	4.11	3.91	4.41	4.55	4.50	4.82	4.48	3.85	3.97	4.02							
180	4.15	4.18	4.00	3.93	3.93	3.90	4.18	4.17	4.04	3.89	3.92	3.87							

C Range: 0 - 360DEG
C Interval: 30.0DEG
Test Speed: HIGH
Temperature:25.3℃
Operators:
Test Date:2025-03-13

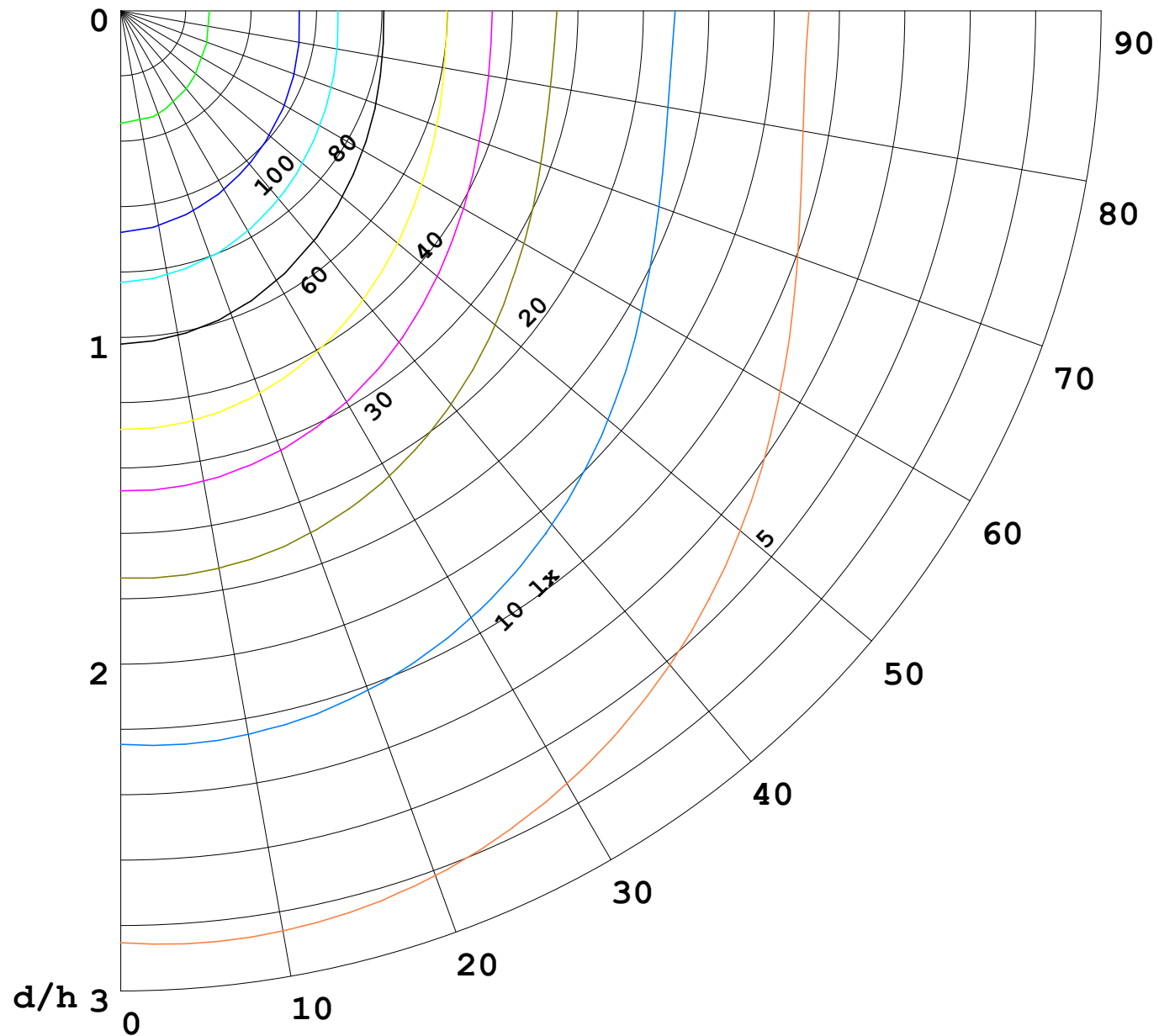
γ Range: 0 - 180DEG
γ Interval: 1.0DEG
Test System:EVERFINE GO-2000B_V1 SYSTEM V2.00.488
Humidity:65.0%
Test Distance:6.360m [K=1.0000]
Remarks:

I (cd)



1000 lm

$\kappa = 1$



F = 1000 lm
 K = 0.7
 Hcc = 0.8 m
 Hfc = 0.0 m
 Eave = 100 lx

	Pcc	Pw	Pfc
————	70	50	30
————	50	30	20

