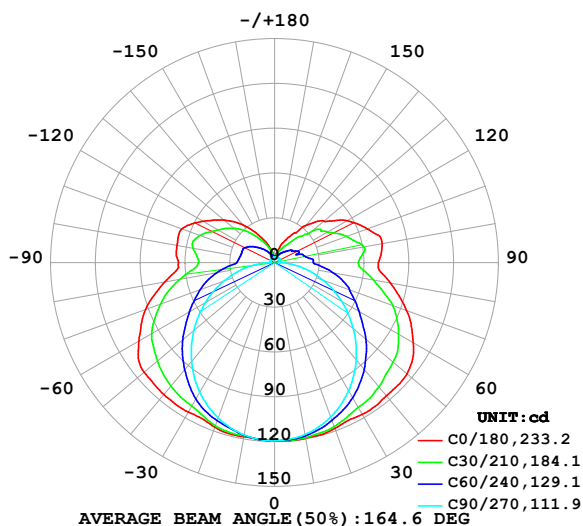


LUMINAIRE PHOTOMETRIC TEST REPORT

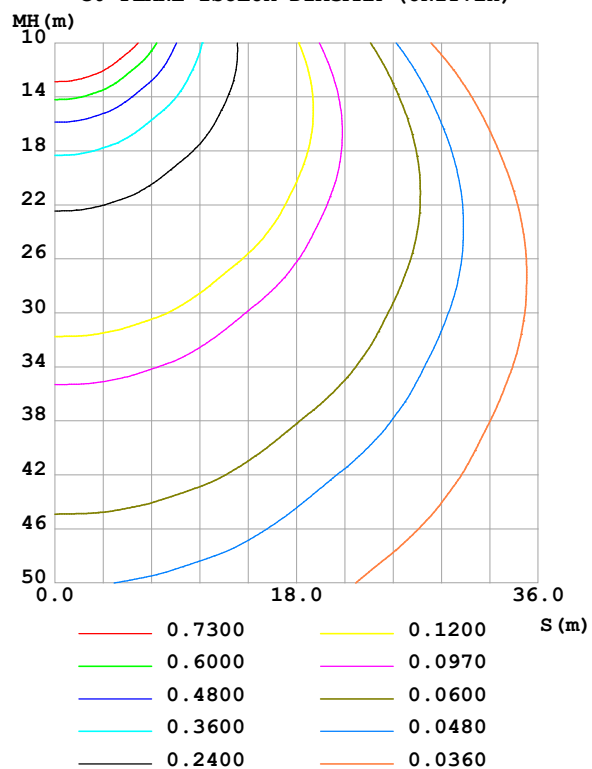
Test:U:24.00V I:0.7304A P:17.53W PF:1.000 Freq:0Hz Lamp Flux:670.404x1 lm		
NAME: SF18-24V-5050-70-SPI-RGBW(2700K)-ALL	TYPE:	WEIGHT:
SPEC.:	DIM.: Length=1m	SERIAL No.:
MFR.: Olym pia lighting	SUR.:	Shielding Angle:

DATA OF LAMP		PHOTOMETRIC DATA				Eff: 38.24 lm/W
MODEL	5050	I _{max} (cd)	119.8	S/MH(C0/180)	1.49	
NOMINAL POWER(W)	18	LOR(%)	100.0	S/MH(C90/270)	1.25	
RATED VOLTAGE(V)	24	TOTAL FLUX(lm)	670.40	η UP,DN(C0-180)	13.0,37.0	
NOMINAL FLUX(lm)	670.404	CIE CLASS	SEMI-D.	η UP,DN(C180-360)	12.8,37.2	
LAMPS INSIDE	1	η up (%)	25.8	CIBSE SHR NOM	1.50	
TEST VOLTAGE(V)		η down (%)	74.2	CIBSE SHR MAX	1.55	

LUMINOUS INTENSITY DISTRIBUTION DIAGRAM



C0 PLANE ISOLUX DIAGRAM (UNIT:lx)



C Range: 0 - 360DEG
C Interval: 30.0DEG
Test Speed: HIGH
Temperature:25.3℃
Operators:
Test Date:2025-03-17

γ Range: 0 - 180DEG
γ Interval: 1.0DEG
Test System:EVERFINE GO-2000B_V1 SYSTEM V2.00.488
Humidity:65.0%
Test Distance:6.360m [K=1.0000]
Remarks:

ZONAL FLUX DIAGRAM

ZONAL FLUX DIAGRAM:

γ	C0	C45	C90	C135	C180	C225	C270	C315	γ	Φ zone	Φ total	%lum,lamp
10	119.5	118.6	116.9	117.5	118.5	117.7	117.3	118.9	0- 10	11.34	11.34	1.69,1.69
20	118.2	114.7	110.0	114.2	117.3	114.5	110.8	115.2	10- 20	32.98	44.32	6.61,6.61
30	117.5	108.3	99.14	107.7	115.6	108.3	100.4	109.2	20- 30	51.47	95.79	14.3,14.3
40	116.6	101.1	85.07	100.1	115.5	100.9	86.60	102.3	30- 40	65.84	161.6	24.1,24.1
50	115.8	91.88	68.91	90.75	114.2	91.56	70.62	93.20	40- 50	74.76	236.4	35.3,35.3
60	107.3	80.70	51.85	79.69	105.2	80.53	53.62	82.09	50- 60	77.47	313.9	46.8,46.8
70	94.16	68.95	34.66	66.75	92.05	67.18	36.17	70.12	60- 70	73.13	387.0	57.7,57.7
80	78.75	53.67	17.91	51.66	74.65	51.92	19.00	54.59	70- 80	62.65	449.6	67.1,67.1
90	69.45	41.09	3.353	38.90	64.33	38.09	3.283	41.02	80- 90	47.61	497.2	74.2,74.2
100	73.21	41.33	3.591	40.56	66.42	39.63	3.272	41.21	90-100	42.60	539.9	80.5,80.5
110	66.27	33.41	3.733	39.18	66.24	38.27	3.429	35.85	100-110	40.45	580.3	86.6,86.6
120	56.20	28.36	3.800	33.27	55.56	32.54	3.449	29.41	110-120	33.43	613.7	91.5,91.5
130	43.29	22.84	3.878	26.78	44.41	26.11	3.388	23.85	120-130	24.85	638.6	95.3,95.3
140	32.47	14.58	3.884	19.66	33.05	19.12	3.252	15.15	130-140	16.31	654.9	97.7,97.7
150	20.26	9.440	3.884	12.84	21.06	12.47	3.341	9.366	140-150	9.037	663.9	99,99
160	12.50	6.057	3.886	8.113	12.18	7.847	3.553	6.084	150-160	4.382	668.3	99.7,99.7
170	4.519	4.378	3.904	5.114	4.936	5.018	3.762	4.326	160-170	1.678	670.0	99.9,99.9
180	3.979	4.006	3.953	4.002	3.999	4.022	3.927	3.990	170-180	0.4163	670.4	100,100
DEG	LUMINOUS INTENSITY:cd									UNIT:lm		

Conical surface Flux(90deg): 198.24 lm

%lum = 29.6%

%lamp = 29.6%

Conical surface Flux(130deg): 351.35 lm

%lum = 52.4%

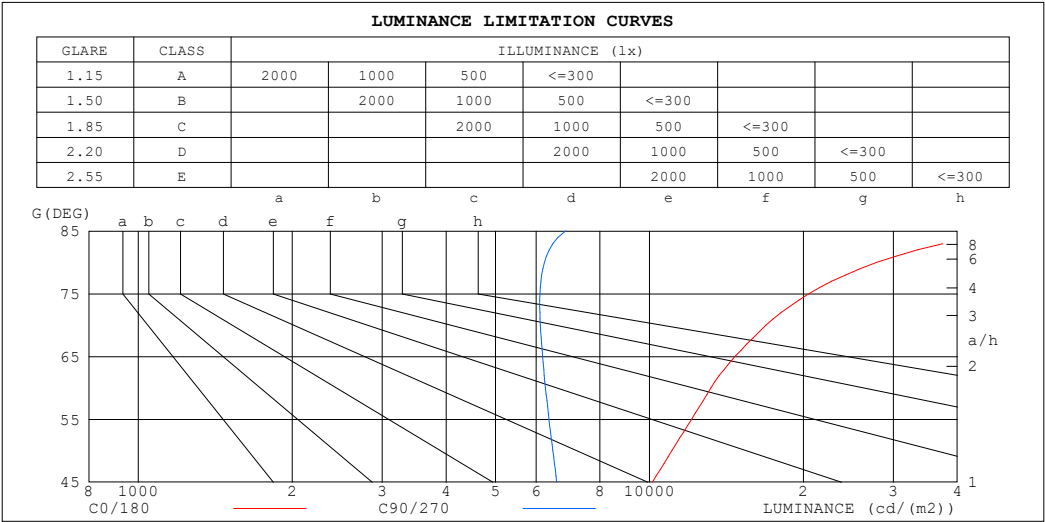
%lamp = 52.4%

C Range: 0 - 360DEG
 C Interval: 30.0DEG
 Test Speed: HIGH
 Temperature:25.3℃
 Operators:
 Test Date:2025-03-17

γ Range: 0 - 180DEG
 γ Interval: 1.0DEG
 Test System:EVERFINE GO-2000B_V1 SYSTEM V2.00.488
 Humidity:65.0%
 Test Distance:6.360m [K=1.0000]
 Remarks:

LUMINANCE LIMITATION CURVES

Test:U:24.00V I:0.7304A P:17.53W PF:1.000 Freq:0Hz Lamp Flux:670.404x1 lm		
NAME: SF18-24V-5050-70-SPI-RGBW(2700K)-ALL	TYPE:	WEIGHT:
SPEC.:	DIM.: Length=1m	SERIAL No.:
MFR.: OLympia lighting	SUR.:	Shielding Angle:



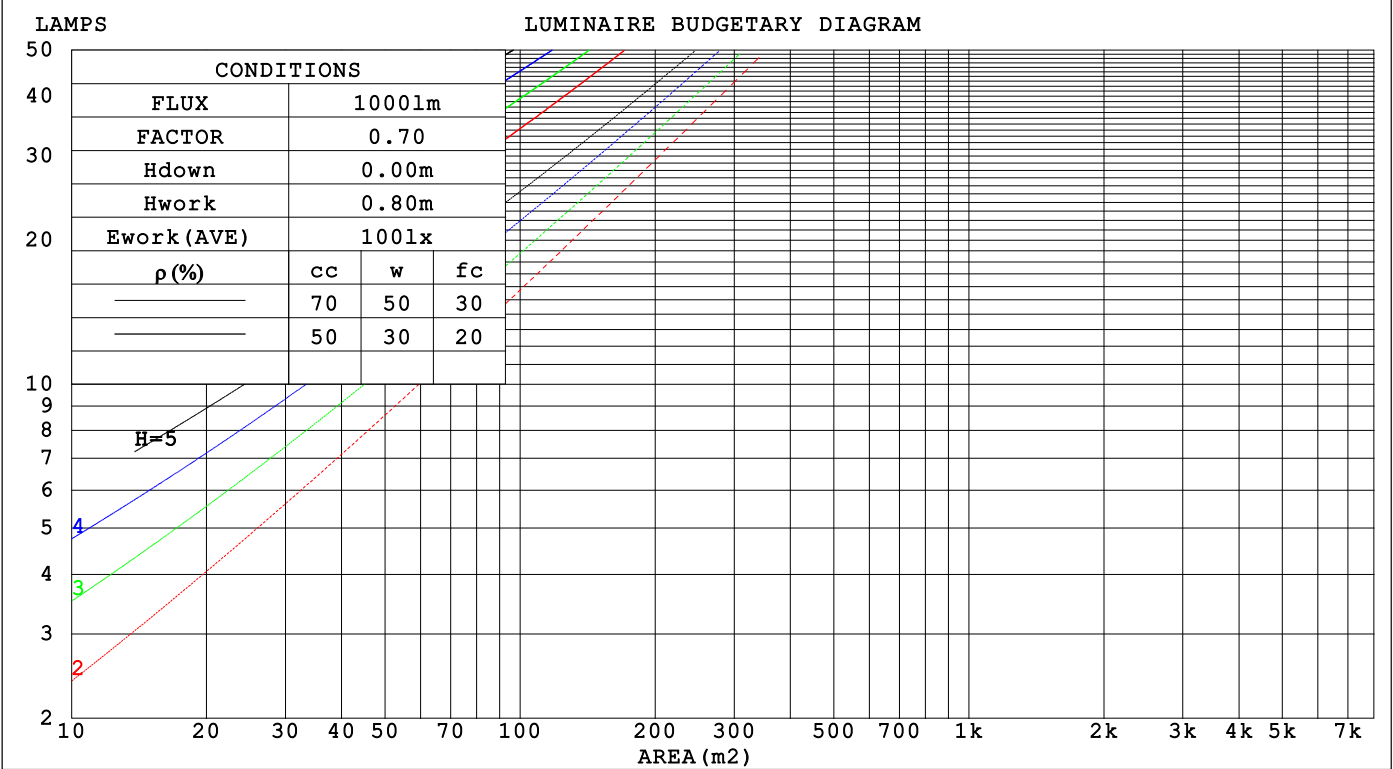
LUMINANCE cd/(m2)		
G (DEG)	C0/180	C90/270
85	50273	6857
80	27853	6226
75	20498	6106
70	16907	6117
65	14697	6179
60	13181	6259
55	12089	6357
50	11068	6470
45	10130	6586

C Range: 0 - 360DEG	γ Range: 0 - 180DEG
C Interval: 30.0DEG	γ Interval: 1.0DEG
Test Speed: HIGH	Test System:EVERFINE GO-2000B_V1 SYSTEM V2.00.488
Temperature:25.3℃	Humidity:65.0%
Operators:	Test Distance:6.360m [K=1.0000]
Test Date:2025-03-17	Remarks:

CU AND LUMINAIRE BUDGETARY ESTIMATE DIAGRAM

Test:U:24.00V I:0.7304A P:17.53W PF:1.000 Freq:0Hz Lamp Flux:670.404x1 lm		
NAME: SF18-24V-5050-70-SPI-RGBW(2700K)-ALL	TYPE:	WEIGHT:
SPEC.:	DIM.: Length=1m	SERIAL No.:
MFR.: OLYMPIA lighting	SUR.:	Shielding Angle:

pcc	80%			70%			50%			30%			10%			0
pw	50%	30%	10%	50%	30%	10%	50%	30%	10%	50%	30%	10%	50%	30%	10%	0
pfc	20%			20%			20%			20%			20%			0
RCR	RCR:Room Cavity Ratio															



C Range: 0 - 360DEG
C Interval: 30.0DEG
Test Speed: HIGH
Temperature:25.3℃
Operators:
Test Date:2025-03-17

γ Range: 0 - 180DEG
γ Interval: 1.0DEG
Test System:EVERFINE GO-2000B_V1 SYSTEM V2.00.488
Humidity:65.0%
Test Distance:6.360m [K=1.0000]
Remarks:

WEC AND CCEC

Test:U:24.00V I:0.7304A P:17.53W PF:1.000 Freq:0Hz Lamp Flux:670.404x1 lm		
NAME: SF18-24V-5050-70-SPI-RGBW(2700K)-ALL	TYPE:	WEIGHT:
SPEC.:	DIM.: Length=1m	SERIAL No.:
MFR.: OLympia lighting	SUR.:	Shielding Angle:

pcc	80%			70%			50%			30%			10%			0														
pw	50%	30%	10%	50%	30%	10%	50%	30%	10%	50%	30%	10%	50%	30%	10%	0														
pfc	20%			20%			20%			20%			20%			0														
RCR	RCR:Room Cavity Ratio															Wall Exitance Coefficients(WEC)														
0.0																														
1.0	.383	.218	.069	.368	.210	.067	.339	.195	.062	.314	.181	.058	.290	.168	.054															
2.0	.332	.182	.056	.318	.175	.054	.292	.163	.050	.269	.151	.047	.247	.140	.044															
3.0	.295	.157	.047	.282	.151	.045	.259	.140	.043	.237	.130	.040	.217	.120	.037															
4.0	.265	.138	.040	.254	.133	.039	.233	.123	.037	.213	.114	.034	.195	.106	.032															
5.0	.241	.123	.036	.231	.118	.034	.211	.110	.032	.193	.102	.030	.176	.094	.028															
6.0	.221	.111	.032	.211	.107	.031	.194	.099	.029	.177	.092	.027	.161	.085	.025															
7.0	.203	.101	.029	.195	.097	.028	.179	.090	.026	.163	.084	.024	.149	.077	.023															
8.0	.189	.092	.026	.181	.089	.025	.166	.083	.024	.152	.077	.022	.138	.071	.021															
9.0	.176	.085	.024	.168	.082	.023	.154	.076	.022	.141	.071	.020	.129	.066	.019															
10.0	.164	.079	.022	.158	.076	.021	.145	.071	.020	.133	.066	.019	.121	.061	.017															

pcc	80%			70%			50%			30%			10%			0
pw	50%	30%	10%	50%	30%	10%	50%	30%	10%	50%	30%	10%	50%	30%	10%	0
pfc	20%			20%			20%			20%			20%			0
RCR	RCR:Room Cavity Ratio						Ceiling Cavity Exitance Coefficients(CCEC)									
0.0	.387	.387	.387	.331	.331	.331	.226	.226	.226	.130	.130	.130	.041	.041	.041	
1.0	.384	.354	.327	.328	.304	.281	.225	.209	.195	.129	.121	.113	.041	.039	.037	
2.0	.377	.331	.293	.323	.285	.253	.221	.197	.177	.128	.115	.104	.041	.037	.034	
3.0	.370	.315	.272	.317	.272	.236	.218	.189	.165	.126	.110	.097	.040	.036	.032	
4.0	.362	.303	.258	.311	.262	.224	.214	.182	.158	.124	.107	.093	.040	.035	.031	
5.0	.355	.293	.248	.305	.254	.216	.210	.177	.152	.122	.104	.090	.039	.034	.030	
6.0	.348	.286	.241	.299	.247	.210	.206	.173	.149	.120	.102	.088	.039	.033	.029	
7.0	.341	.279	.236	.293	.242	.206	.202	.170	.146	.118	.100	.087	.038	.033	.029	
8.0	.334	.274	.232	.288	.237	.203	.199	.167	.144	.116	.098	.086	.037	.032	.028	
9.0	.328	.269	.229	.282	.233	.200	.196	.164	.142	.114	.097	.085	.037	.032	.028	
10.0	.322	.265	.227	.278	.230	.198	.193	.162	.141	.112	.096	.084	.036	.031	.028	

C Range: 0 - 360DEG
C Interval: 30.0DEG
Test Speed: HIGH
Temperature:25.3℃
Operators:
Test Date:2025-03-17

γ Range: 0 - 180DEG
γ Interval: 1.0DEG
Test System:EVERFINE GO-2000B_V1 SYSTEM V2.00.488
Humidity:65.0%
Test Distance:6.360m [K=1.0000]
Remarks:

UGR(Unified Glare Rating) Table

Test:U:24.00V I:0.7304A P:17.53W PF:1.000 Freq:0Hz Lamp Flux:670.404x1 lm											
NAME: SF18-24V-5050-70-SPI-RGBW(2700K)-ALL						TYPE:		WEIGHT:			
SPEC.:						DIM.: Length=1m		SERIAL No.:			
MFR.: OLympia lighting						SUR.:		Shielding Angle:			
ceiling/cavity	0.7	0.7	0.5	0.5	0.3	0.7	0.7	0.5	0.5	0.3	
walls	0.5	0.3	0.5	0.3	0.3	0.5	0.3	0.5	0.3	0.3	
working plane	0.2	0.2	0.2	0.2	0.2	0.2	0.2	0.2	0.2	0.2	
Room dimensions		Viewed crosswise					Viewed endwise				
x = 2H y = 2H	2H	21.8	23.1	22.4	23.7	24.5	18.7	20.0	19.3	20.6	21.3
	3H	24.6	25.8	25.3	26.5	27.2	20.4	21.6	21.0	22.2	23.0
	4H	26.1	27.2	26.8	27.9	28.7	21.2	22.3	21.8	22.9	23.7
	6H	27.7	28.8	28.4	29.4	30.2	21.8	22.9	22.5	23.5	24.3
	8H	28.6	29.6	29.3	30.3	31.1	22.1	23.1	22.7	23.8	24.6
	12H	29.6	30.6	30.3	31.3	32.1	22.3	23.2	22.9	23.9	24.8
4H	2H	22.3	23.4	23.0	24.1	24.9	20.1	21.2	20.7	21.9	22.6
	3H	25.4	26.4	26.1	27.1	27.9	22.0	23.0	22.7	23.7	24.5
	4H	27.0	27.9	27.8	28.7	29.5	22.9	23.8	23.6	24.5	25.4
	6H	28.9	29.7	29.6	30.4	31.3	23.8	24.6	24.5	25.3	26.2
	8H	29.9	30.6	30.6	31.4	32.3	24.1	24.8	24.8	25.6	26.5
	12H	31.0	31.7	31.8	32.5	33.4	24.4	25.1	25.1	25.8	26.8
8H	4H	27.3	28.1	28.1	28.8	29.7	24.1	24.9	24.9	25.6	26.5
	6H	29.4	30.1	30.2	30.9	31.8	25.3	25.9	26.1	26.7	27.6
	8H	30.7	31.2	31.5	32.0	33.0	25.8	26.4	26.6	27.2	28.1
	12H	32.1	32.6	32.9	33.4	34.4	26.3	26.8	27.1	27.6	28.6
12H	4H	27.3	28.0	28.1	28.8	29.7	24.5	25.2	25.3	26.0	26.9
	6H	29.5	30.1	30.3	30.9	31.9	25.9	26.4	26.7	27.2	28.2
	8H	30.9	31.4	31.7	32.2	33.2	26.6	27.1	27.4	27.9	28.8
Variations with the observer position at spacings(CIE Pub.117):											
S = 1.0H		+ 0.1 / - 0.1					+ 0.1 / - 0.1				
1.5H		+ 0.2 / - 0.2					+ 0.2 / - 0.3				
2.0H		+ 0.2 / - 0.3					+ 0.2 / - 0.4				

CIE Pub.117, 670.4 lm Total Lamp Luminous Flux Correct (8log(F/F0) = -1.4)
Area: 0.0165 m2

C Range: 0 - 360DEG
C Interval: 30.0DEG
Test Speed: HIGH
Temperature:25.3℃
Operators:
Test Date:2025-03-17

γ Range: 0 - 180DEG
γ Interval: 1.0DEG
Test System:EVERFINE GO-2000B_V1 SYSTEM V2.00.488
Humidity:65.0%
Test Distance:6.360m [K=1.0000]
Remarks:

UTILIZATION FACTORS TABLE

Test:U:24.00V I:0.7304A P:17.53W PF:1.000 Freq:0Hz Lamp Flux:670.404x1 lm		
NAME: SF18-24V-5050-70-SPI-RGBW(2700K)-ALL	TYPE:	WEIGHT:
SPEC.:	DIM.: Length=1m	SERIAL No.:
MFR.: OLympia lighting	SUR.:	Shielding Angle:

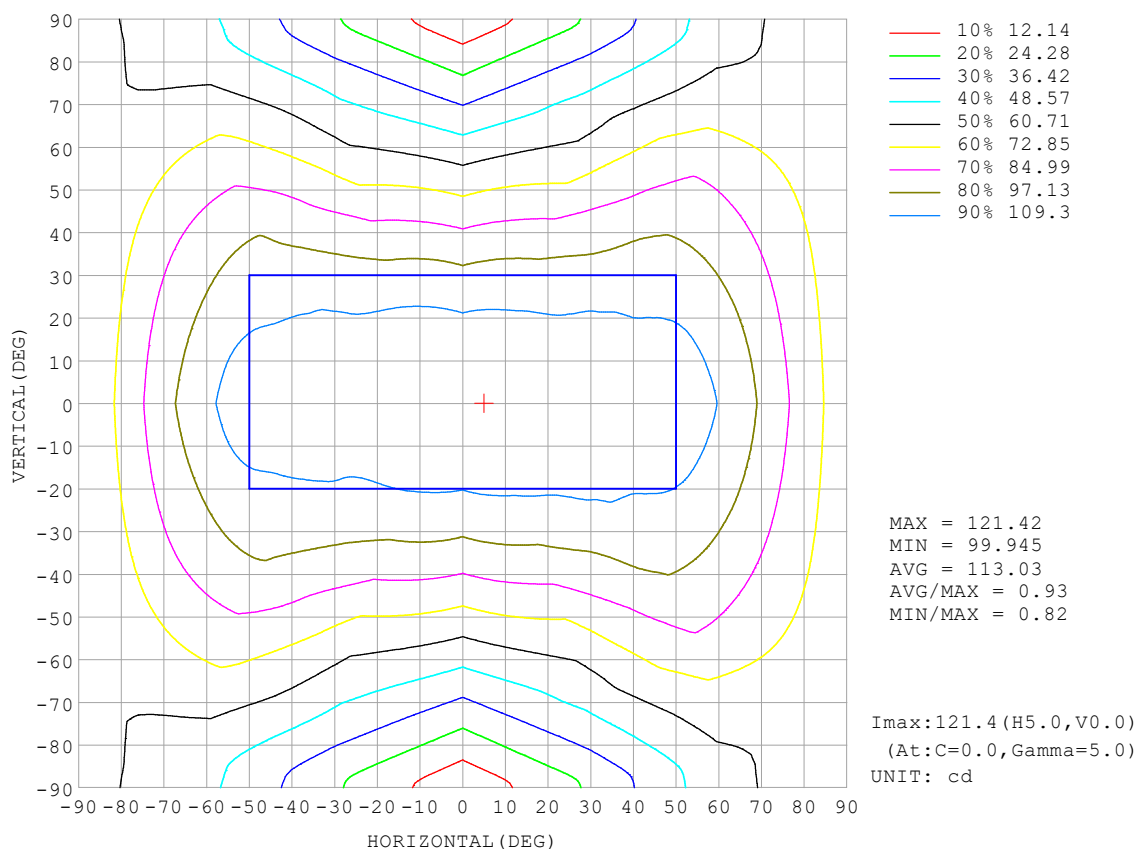
REFLECTANCE										
Ceiling	0.8	0.8	0.8	0.7	0.7	0.7	0.5	0.5	0.5	0
Walls	0.7	0.5	0.3	0.7	0.5	0.3	0.7	0.5	0.3	0
Working plane	0.2	0.2	0.2	0.2	0.2	0.2	0.2	0.2	0.2	0
ROOM INDEX	UTILIZATION FACTORS (PERCENT) $k(RI) \times RCR = 5$									
$k = 0.60$	45	32	25	43	32	25	41	31	24	17
0.80	54	41	33	52	40	32	49	38	31	23
1.00	62	48	40	59	47	39	55	47	37	28
1.25	69	56	47	66	54	46	61	51	44	33
1.50	74	61	52	71	59	51	65	55	48	37
2.00	81	70	61	78	67	59	71	62	56	43
2.50	86	75	67	82	72	65	74	67	61	46
3.00	90	80	72	85	77	70	78	71	65	50
4.00	95	86	80	90	83	77	82	76	71	54
5.00	98	91	84	93	87	81	84	79	75	57
ROOM INDEX	UF(total)									Direct
According to DIN EN 13032-2 2004			Suspended					SHRNOM = 1.25		

C Range: 0 - 360DEG
 C Interval: 30.0DEG
 Test Speed: HIGH
 Temperature: 25.3°C
 Operators:
 Test Date: 2025-03-17

γ Range: 0 - 180DEG
 γ Interval: 1.0DEG
 Test System: EVERFINE GO-2000B_V1 SYSTEM V2.00.488
 Humidity: 65.0%
 Test Distance: 6.360m [K=1.0000]
 Remarks:

ISOCANDELA DIAGRAM

Test:U:24.00V I:0.7304A P:17.53W PF:1.000 Freq:0Hz Lamp Flux:670.404x1 lm		
NAME: SF18-24V-5050-70-SPI-RGBW(2700K)-ALL	TYPE:	WEIGHT:
SPEC.:	DIM.: Length=1m	SERIAL No.:
MFR.: OLympia lighting	SUR.:	Shielding Angle:

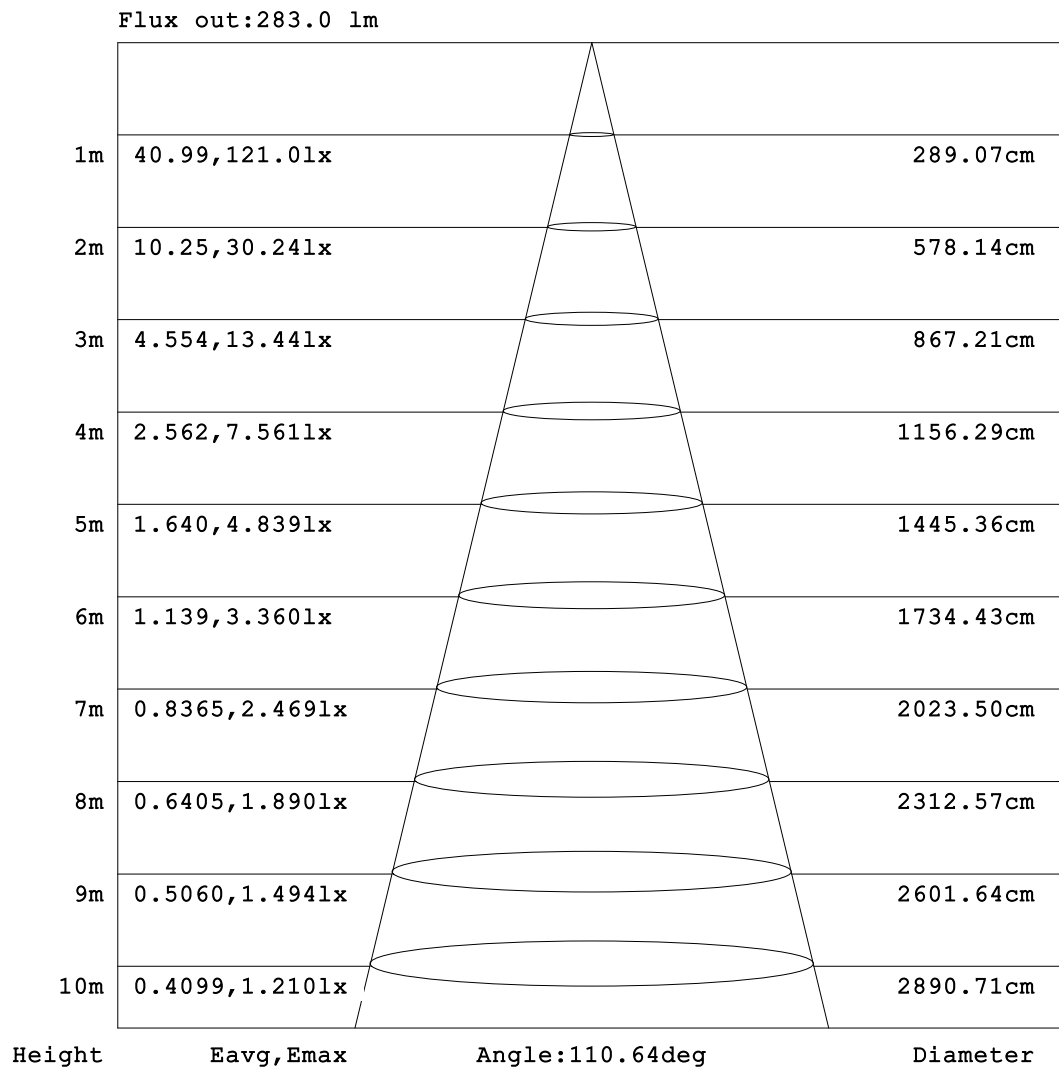


C Range: 0 - 360DEG
C Interval: 30.0DEG
Test Speed: HIGH
Temperature:25.3℃
Operators:
Test Date:2025-03-17

γ Range: 0 - 180DEG
γ Interval: 1.0DEG
Test System:EVERFINE GO-2000B_V1 SYSTEM V2.00.488
Humidity:65.0%
Test Distance:6.360m [K=1.0000]
Remarks:

AAI Figure

Test:U:24.00V I:0.7304A P:17.53W PF:1.000 Freq:0Hz Lamp Flux:670.404x1 lm		
NAME: SF18-24V-5050-70-SPI-RGBW(2700K)-ALL	TYPE:	WEIGHT:
SPEC.:	DIM.: Length=1m	SERIAL No.:
MFR.: OLympia lighting	SUR.:	Shielding Angle:



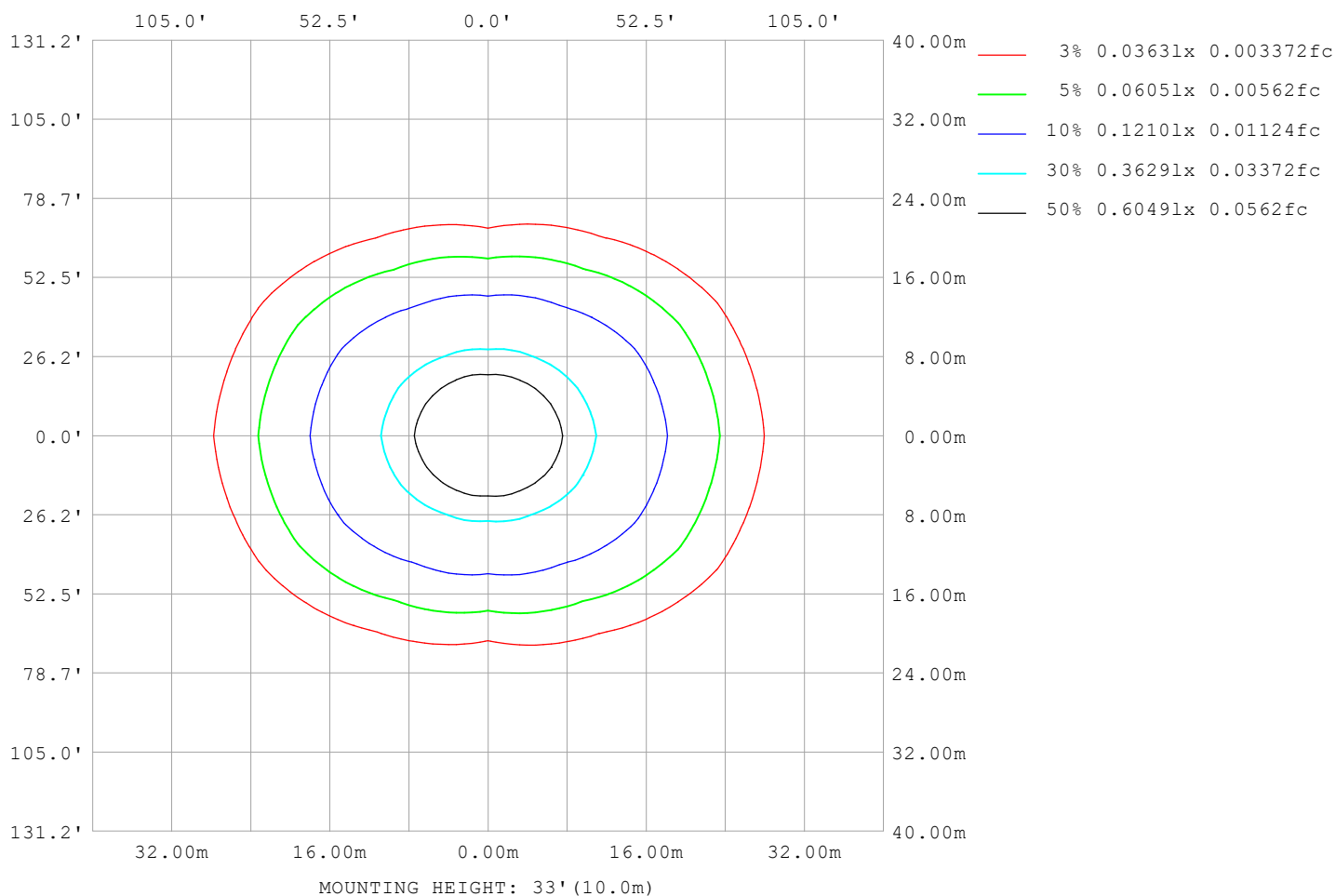
Note:The Curves indicate the illuminated area and the average illumination when the luminaire is at different distance.

C Range: 0 - 360DEG
C Interval: 30.0DEG
Test Speed: HIGH
Temperature:25.3℃
Operators:
Test Date:2025-03-17

γ Range: 0 - 180DEG
γ Interval: 1.0DEG
Test System:EVERFINE GO-2000B_V1 SYSTEM V2.00.488
Humidity:65.0%
Test Distance:6.360m [K=1.0000]
Remarks:

ISOLUX DIAGRAM

Test:U:24.00V I:0.7304A P:17.53W PF:1.000 Freq:0Hz Lamp Flux:670.404x1 lm		
NAME: SF18-24V-5050-70-SPI-RGBW(2700K)-ALL	TYPE:	WEIGHT:
SPEC.:	DIM.: Length=1m	SERIAL No.:
MFR.: OLympia lighting	SUR.:	Shielding Angle:



C Range: 0 - 360DEG
C Interval: 30.0DEG
Test Speed: HIGH
Temperature: 25.3°C
Operators:
Test Date: 2025-03-17

γ Range: 0 - 180DEG
γ Interval: 1.0DEG
Test System: EVERFINE GO-2000B_V1 SYSTEM V2.00.488
Humidity: 65.0%
Test Distance: 6.360m [K=1.0000]
Remarks:

LED Avg.L Report

Test:U:24.00V I:0.7304A P:17.53W PF:1.000 Freq:0Hz Lamp Flux:670.404x1 lm		
NAME: SF18-24V-5050-70-SPI-RGBW(2700K)-ALL	TYPE:	WEIGHT:
SPEC.:	DIM.: Length=1m	SERIAL No.:
MFR.: OLympia lighting	SUR.:	Shielding Angle:

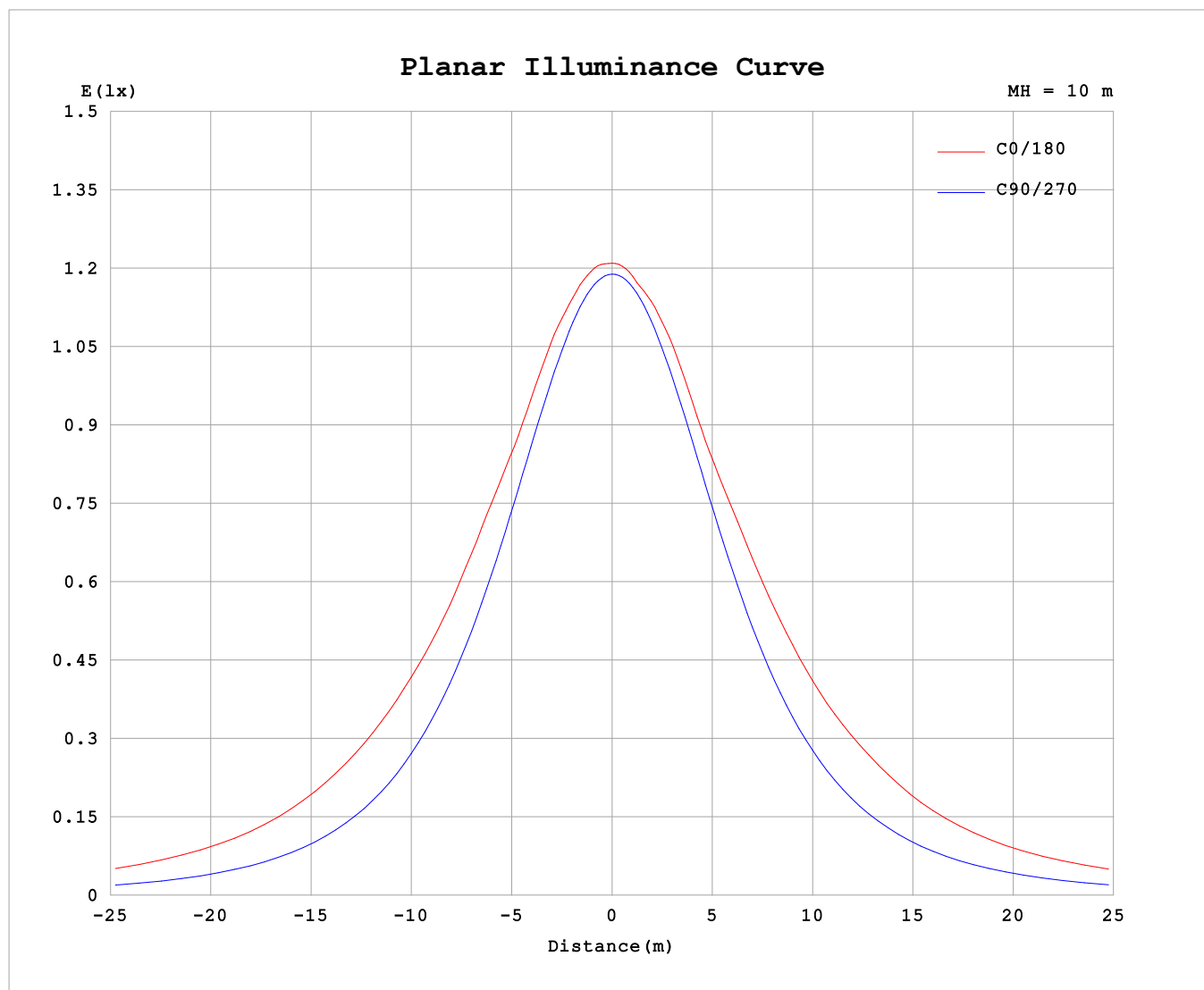
AvgL	cd/m2
L_0~180 (65) av	14325
L_0~180 (75) av	19874
L_0~180 (85) av	47933
L_90~270 (65) av	6323
L_90~270 (75) av	6283
L_90~270 (85) av	7151
L_45 (65) av	10734
L_45 (75) av	14426
L_45 (85) av	31580

Standard: GB/T 29293-2012

C Range: 0 - 360DEG
C Interval: 30.0DEG
Test Speed: HIGH
Temperature:25.3℃
Operators:
Test Date:2025-03-17

γ Range: 0 - 180DEG
γ Interval: 1.0DEG
Test System:EVERFINE GO-2000B_V1 SYSTEM V2.00.488
Humidity:65.0%
Test Distance:6.360m [K=1.0000]
Remarks:

Planar Illuminance Curve



C Range: 0 - 360DEG
C Interval: 30.0DEG
Test Speed: HIGH
Temperature: 25.3 °C
Operators:
Test Date: 2025-03-17

γ Range: 0 - 180DEG
 γ Interval: 1.0DEG
Test System: EVERFINE GO-2000B_V1 SYSTEM V2.00.488
Humidity: 65.0%
Test Distance: 6.360m [K=1.0000]
Remarks:

LUMINOUS DISTRIBUTION INTENSITY DATA

Test:U:24.00V I:0.7304A P:17.53W PF:1.000 Freq:0Hz Lamp Flux:670.404x1 lm																	
NAME: SF18-24V-5050-70-SPI-RGBW(2700K)-ALL									TYPE:			WEIGHT:					
SPEC.:									DIM.: Length=1m			SERIAL No.:					
MFR.: OLYMPIA lighting									SUR.:			Shielding Angle:					

Table--1

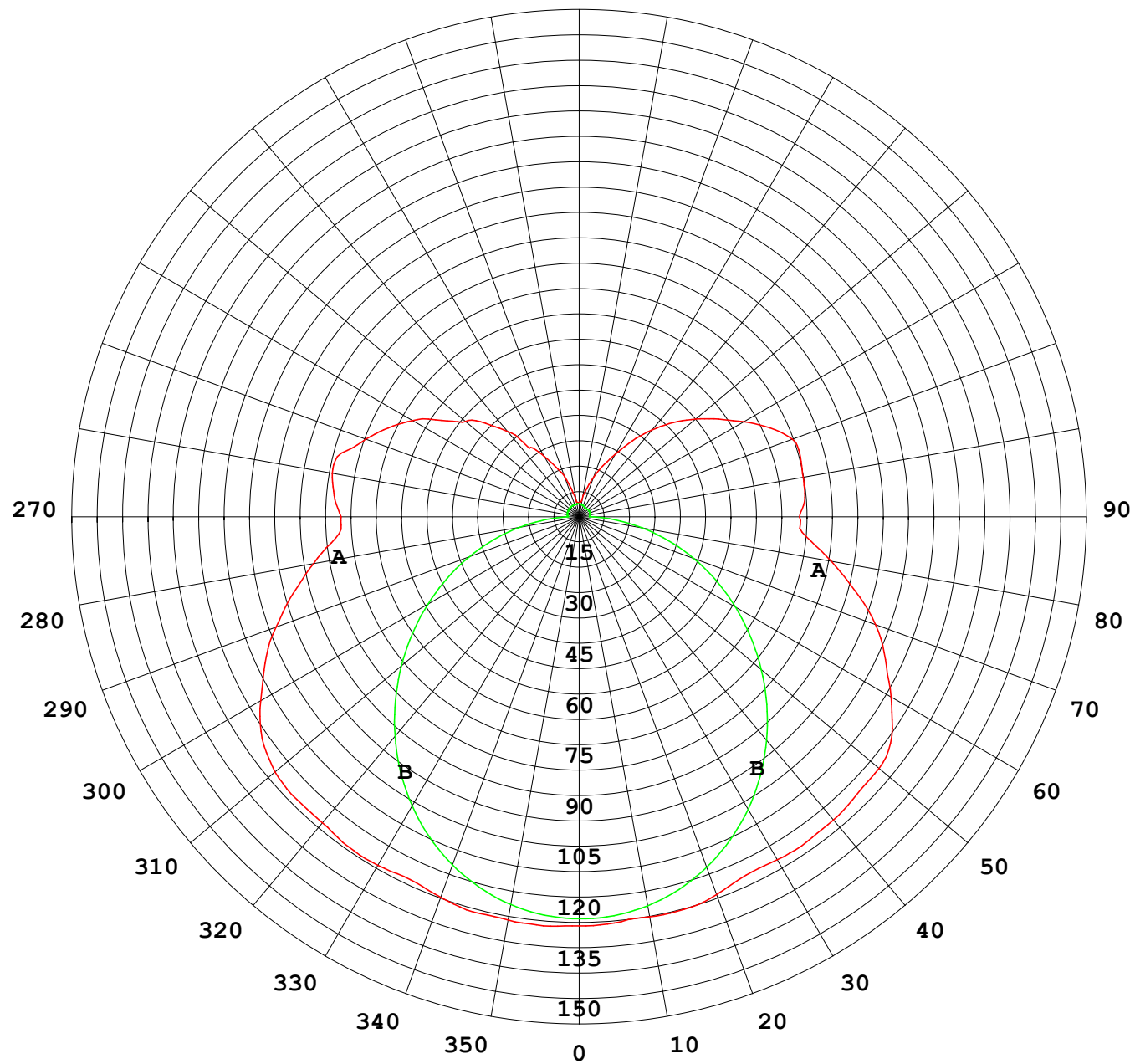
UNIT: cd

C (DEG) γ (DEG)	0	30	60	90	120	150	180	210	240	270	300	330						
0	119	119	119	119	119	119	119	119	119	119	119	119						
5	120	120	119	119	119	119	119	119	119	119	119	120						
10	119	119	118	117	117	118	119	118	117	117	118	119						
15	119	118	116	114	114	118	119	118	115	115	116	118						
20	118	117	112	110	112	116	117	116	113	111	113	117						
25	117	114	109	105	109	113	115	113	110	106	110	115						
30	117	112	105	99.1	105	111	116	111	106	100	106	113						
35	118	111	99.3	92.5	98.7	110	116	110	100.0	93.8	101	112						
40	117	109	93.4	85.1	92.5	108	115	108	93.7	86.6	95.0	110						
45	117	106	86.8	77.2	86.0	105	115	106	87.3	78.8	88.5	107						
50	116	104	79.9	68.9	79.1	102	114	103	80.5	70.6	81.8	105						
55	113	101	72.1	60.4	71.5	98.9	111	99.0	72.9	62.2	74.0	102						
60	107	95.9	65.4	51.9	64.7	94.7	105	95.1	65.8	53.6	67.3	97.0						
65	101	90.6	59.1	43.3	58.4	88.2	98.6	88.6	59.2	44.9	60.8	91.5						
70	94.2	84.3	53.5	34.7	52.3	81.2	92.0	81.3	53.0	36.2	55.2	85.1						
75	86.4	75.4	47.4	26.2	46.1	73.6	83.4	73.6	46.7	27.5	48.9	76.3						
80	78.8	67.3	39.9	17.9	39.0	64.3	74.6	64.3	39.5	19.0	41.3	67.9						
85	71.3	59.7	32.0	9.90	31.1	55.7	66.5	55.3	31.4	10.7	33.1	60.0						
90	69.4	56.1	26.0	3.35	26.0	51.8	64.3	50.8	25.3	3.28	26.3	55.8						
95	71.8	58.8	25.9	3.50	25.2	53.7	66.2	52.3	24.4	3.14	26.1	58.3						
100	73.2	60.8	21.7	3.59	24.4	56.8	66.4	55.5	23.6	3.27	22.4	60.1						
105	71.8	55.7	19.9	3.67	24.0	57.5	66.9	56.4	23.2	3.39	20.6	56.9						
110	66.3	51.4	15.3	3.73	24.0	54.4	66.2	53.3	23.2	3.43	18.8	52.9						
115	61.4	46.5	17.9	3.77	23.6	49.5	61.5	48.5	22.8	3.45	19.0	47.3						
120	56.2	41.0	15.7	3.80	21.8	44.8	55.6	43.9	21.1	3.45	16.8	42.1						
125	49.1	38.1	14.3	3.83	19.6	40.8	49.8	40.0	18.9	3.45	14.8	38.6						
130	43.3	32.9	12.7	3.88	17.0	36.5	44.4	35.9	16.3	3.39	13.8	33.9						
135	38.6	24.9	10.8	3.88	14.6	31.9	39.0	31.3	13.9	3.30	11.4	26.7						
140	32.5	19.9	9.24	3.88	12.4	26.9	33.1	26.4	11.8	3.25	9.45	20.9						
145	24.7	14.8	7.93	3.88	10.5	21.6	27.0	21.2	9.84	3.25	7.89	16.3						
150	20.3	12.3	6.60	3.88	8.44	17.2	21.1	17.0	7.92	3.34	6.36	12.4						
155	16.0	9.71	5.48	3.88	6.99	13.6	16.4	13.5	6.61	3.45	5.27	10.4						
160	12.5	7.26	4.84	3.89	5.97	10.3	12.2	10.0	5.67	3.55	4.71	7.46						
165	7.93	5.33	4.40	3.89	5.08	7.32	8.50	7.18	4.90	3.66	4.26	5.23						
170	4.52	4.49	4.27	3.90	4.74	5.49	4.94	5.41	4.62	3.76	4.15	4.50						
175	4.12	4.21	4.12	3.94	4.58	4.77	4.35	4.75	4.51	3.86	4.05	4.19						
180	3.98	4.04	3.97	3.95	3.99	4.01	4.00	4.05	3.99	3.93	3.98	4.00						

C Range: 0 - 360DEG
C Interval: 30.0DEG
Test Speed: HIGH
Temperature:25.3℃
Operators:
Test Date:2025-03-17

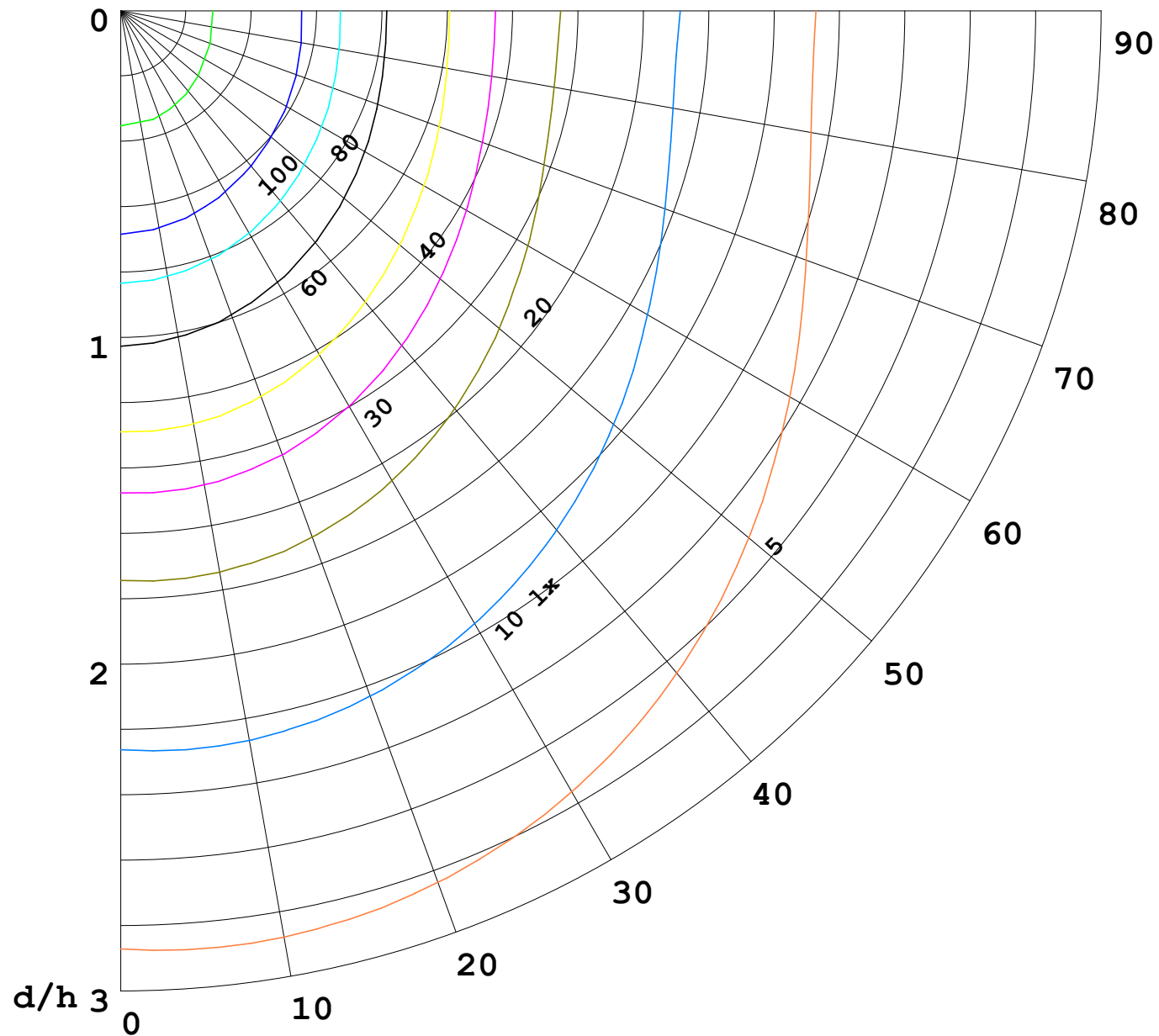
γ Range: 0 - 180DEG
γ Interval: 1.0DEG
Test System:EVERFINE GO-2000B_V1 SYSTEM V2.00.488
Humidity:65.0%
Test Distance:6.360m [K=1.0000]
Remarks:

I (cd)



1000 lm

$\kappa = 1$



F = 1000 lm
 K = 0.7
 Hcc = 0.8 m
 Hfc = 0.0 m
 Eave = 100 lx

	Pcc	Pw	Pfc
—————	70	50	30
—————	50	30	20

