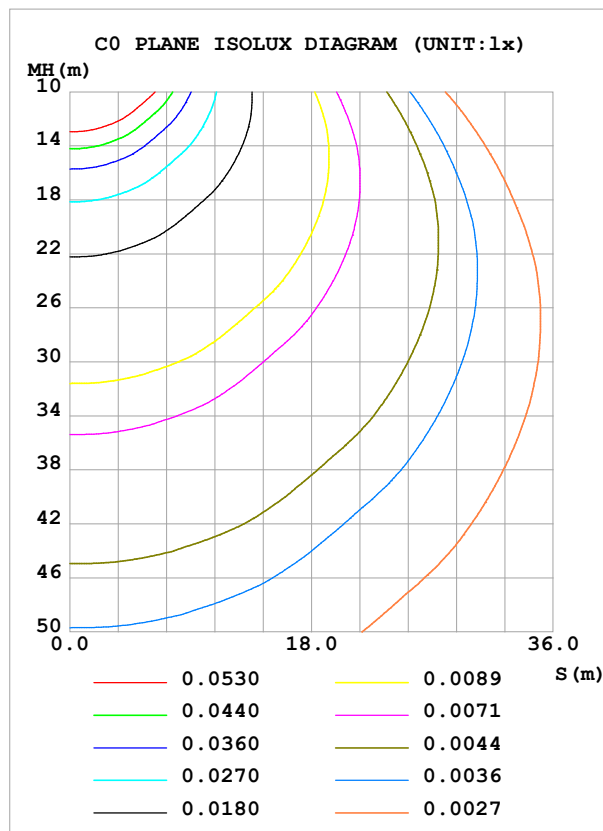
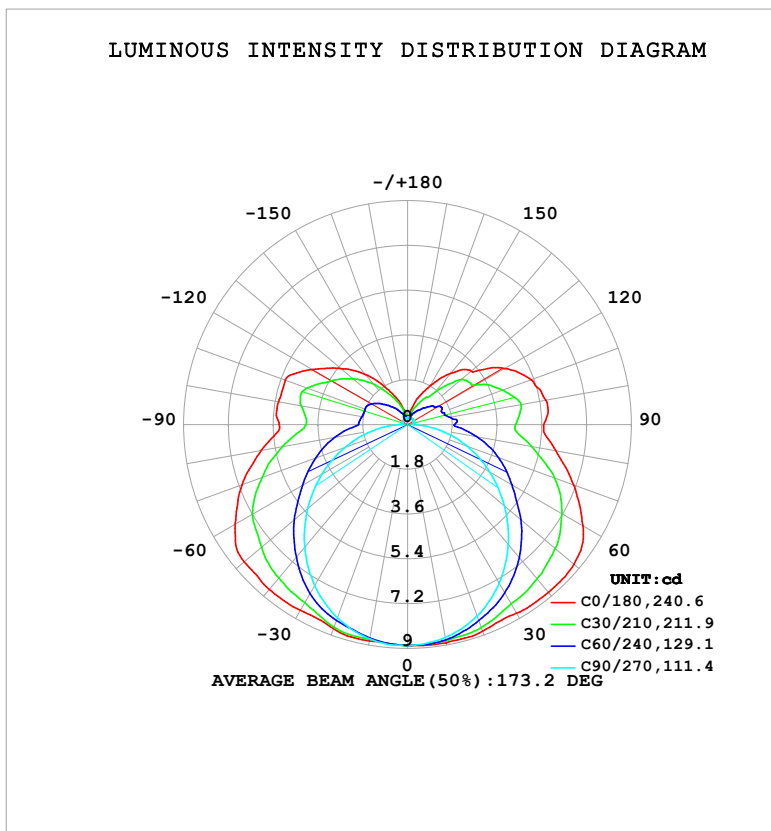


# LUMINAIRE PHOTOMETRIC TEST REPORT

Test:U:24.00V I:0.4013A P:9.631W PF:1.000 Freq:0Hz Lamp Flux:51.1033x1 lm		
NAME: SF18-24V-5050-70-SPI-RGBW(4000K)-B	TYPE:	WEIGHT:
SPEC.:	DIM.: Length=1m	SERIAL No.:
MFR.: OLympia lighting	SUR.:	Shielding Angle:

DATA OF LAMP		PHOTOMETRIC DATA      Eff: 5.31 lm/W			
MODEL	5050	Imax (cd)	8.905	S/MH (C0/180)	1.50
NOMINAL POWER (W)		LOR (%)	100.0	S/MH (C90/270)	1.25
RATED VOLTAGE (V)	24	TOTAL FLUX (lm)	51.103	η UP, DN (C0-180)	13.5, 36.3
NOMINAL FLUX (lm)	51.1033	CIE CLASS	SEMI-D.	η UP, DN (C180-360)	13.4, 36.8
LAMPS INSIDE	1	η up (%)	26.9	CIBSE SHR NOM	1.50
TEST VOLTAGE (V)		η down (%)	73.1	CIBSE SHR MAX	1.55



C Range: 0 - 360DEG  
C Interval: 30.0DEG  
Test Speed: HIGH  
Temperature: 25.3°C  
Operators:  
Test Date: 2025-03-13

```

γ Range: 0 - 180DEG
γ Interval: 1.0DEG
Test System:EVERFINE GO-2000B_V1 SYSTEM V2.00.488
Humidity:65.0%
Test Distance:6.360m [K=1.0000]
Remarks:

```

## ZONAL FLUX DIAGRAM

## ZONAL FLUX DIAGRAM:

$\gamma$	C0	C45	C90	C135	C180	C225	C270	C315	$\gamma$	$\Phi$ zone	$\Phi$ total	%lum, lamp
10	8.905	8.807	8.691	8.735	8.836	8.739	8.747	8.842	0- 10	0.8429	0.8429	1.65,1.65
20	8.828	8.528	8.188	8.498	8.729	8.523	8.258	8.586	10- 20	2.454	3.297	6.45,6.45
30	8.750	8.066	7.369	8.018	8.617	8.060	7.469	8.144	20- 30	3.834	7.131	14,14
40	8.802	7.540	6.296	7.440	8.649	7.505	6.434	7.643	30- 40	4.904	12.04	23.6,23.6
50	8.733	6.847	5.076	6.724	8.577	6.810	5.240	6.974	40- 50	5.579	17.61	34.5,34.5
60	8.137	6.006	3.815	5.950	8.005	6.041	3.965	6.176	50- 60	5.782	23.40	45.8,45.8
70	7.105	5.093	2.546	5.015	7.083	5.080	2.664	5.341	60- 70	5.495	28.89	56.5,56.5
80	6.050	3.938	1.312	3.991	5.970	4.039	1.409	4.267	70- 80	4.749	33.64	65.8,65.8
90	5.476	3.112	0.2487	3.079	5.156	3.033	0.2811	3.313	80- 90	3.716	37.36	73.1,73.1
100	5.646	3.183	0.2487	3.184	5.274	3.109	0.2487	3.223	90-100	3.345	40.70	79.6,79.6
110	5.289	2.765	0.2602	3.090	5.228	3.060	0.2487	2.932	100-110	3.174	43.88	85.9,85.9
120	4.514	2.341	0.2718	2.625	4.443	2.600	0.2515	2.457	110-120	2.684	46.56	91.1,91.1
130	3.346	1.988	0.2863	2.094	3.518	2.076	0.2515	1.955	120-130	1.982	48.54	95,95
140	2.696	1.244	0.2920	1.528	2.622	1.519	0.2515	1.222	130-140	1.317	49.86	97.6,97.6
150	1.782	0.8261	0.3007	0.9933	1.673	0.9806	0.2487	0.7135	140-150	0.7314	50.59	99,99
160	1.084	0.5160	0.3007	0.6179	0.9676	0.6144	0.2660	0.4665	150-160	0.3500	50.94	99.7,99.7
170	0.3864	0.3418	0.3065	0.3826	0.3744	0.3923	0.2805	0.3264	160-170	0.1322	51.07	99.9,99.9
180	0.3199	0.3143	0.3036	0.3061	0.3199	0.3172	0.2891	0.2989	170-180	0.0320	51.10	100,100
DEG	LUMINOUS INTENSITY:cd									UNIT:lm		

Conical surface Flux(90deg): 14.768 lm

%lum = 28.9%

%lamp = 28.9%

Conical surface Flux(130deg): 26.21 lm

%lum = 51.3%

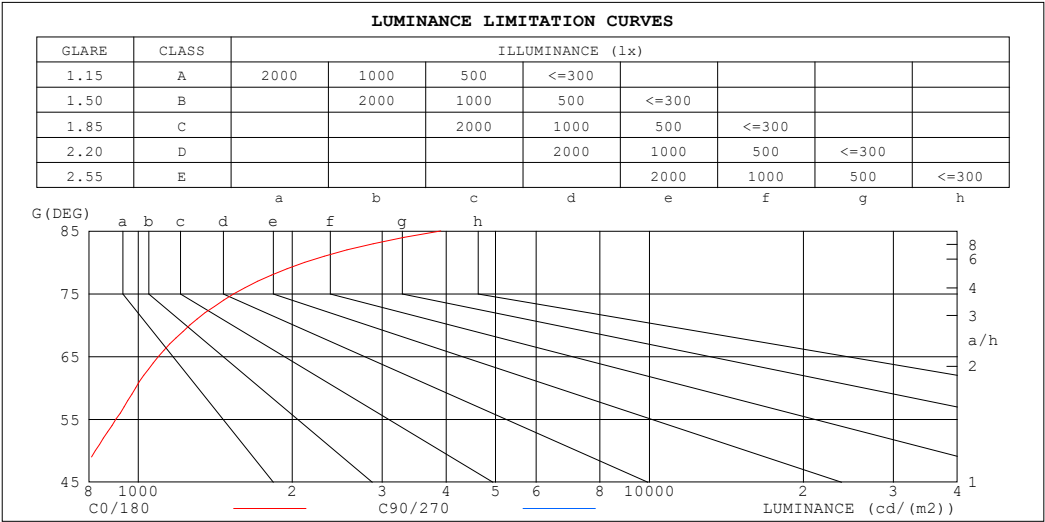
%lamp = 51.3%

C Range: 0 - 360DEG  
 C Interval: 30.0DEG  
 Test Speed: HIGH  
 Temperature:25.3℃  
 Operators:  
 Test Date:2025-03-13

$\gamma$  Range: 0 - 180DEG  
 $\gamma$  Interval: 1.0DEG  
 Test System:EVERFINE GO-2000B\_V1 SYSTEM V2.00.488  
 Humidity:65.0%  
 Test Distance:6.360m [K=1.0000]  
 Remarks:

LUMINANCE LIMITATION CURVES

Test:U:24.00V I:0.4013A P:9.631W PF:1.000 Freq:0Hz Lamp Flux:51.1033x1 lm		
NAME: SF18-24V-5050-70-SPI-RGBW(4000K)-B	TYPE:	WEIGHT:
SPEC.:	DIM.: Length=1m	SERIAL No.:
MFR.: OLYMPIA lighting	SUR.:	Shielding Angle:



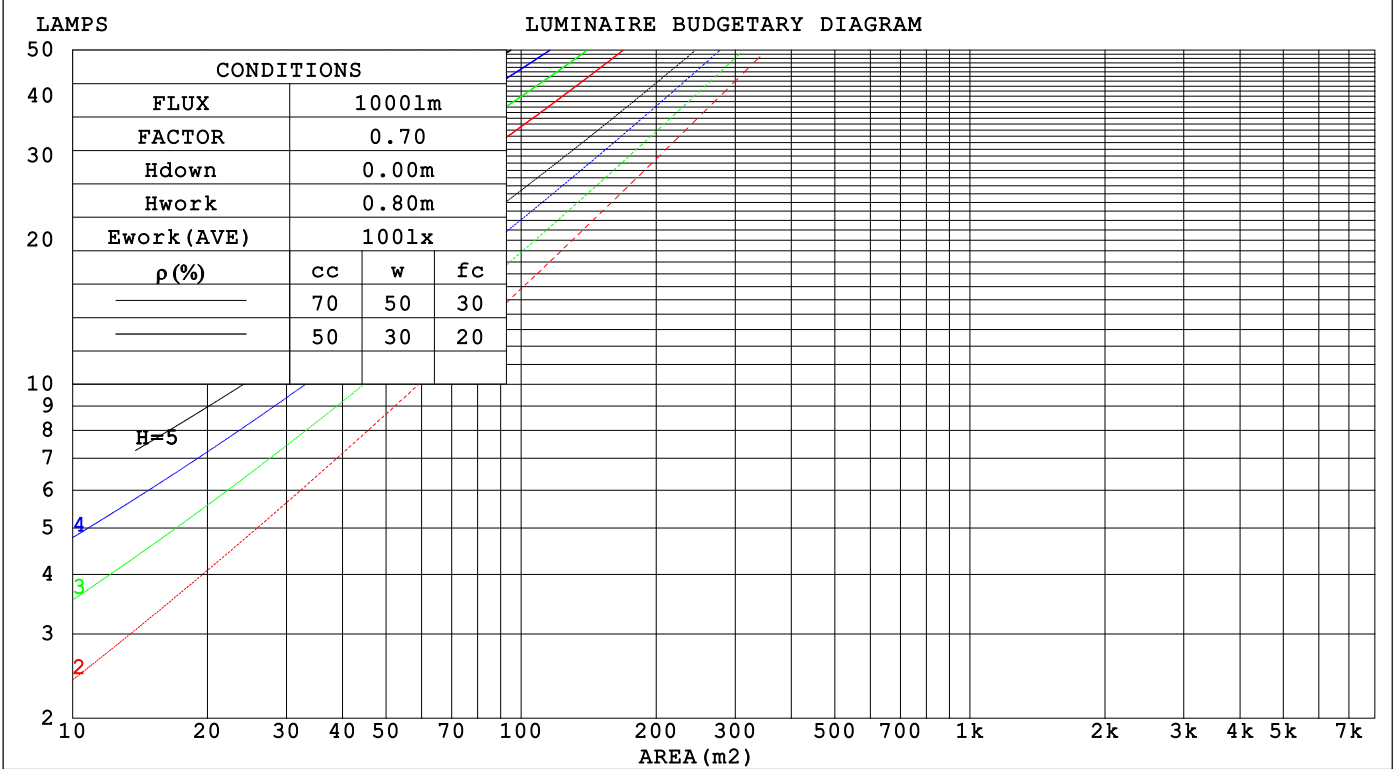
LUMINANCE cd/(m2)		
G (DEG)	C0/180	C90/270
85	3904	503
80	2115	457
75	1539	450
70	1261	450
65	1094	455
60	988	462
55	904	469
50	825	478
45	755	487

C Range: 0 - 360DEG	γ Range: 0 - 180DEG
C Interval: 30.0DEG	γ Interval: 1.0DEG
Test Speed: HIGH	Test System:EVERFINE GO-2000B_V1 SYSTEM V2.00.488
Temperature:25.3℃	Humidity:65.0%
Operators:	Test Distance:6.360m [K=1.0000]
Test Date:2025-03-13	Remarks:

CU AND LUMINAIRE BUDGETARY ESTIMATE DIAGRAM

Test:U:24.00V I:0.4013A P:9.631W PF:1.000 Freq:0Hz		
Lamp Flux:51.1033x1 lm		
NAME: SF18-24V-5050-70-SPI-RGBW(4000K)-B	TYPE:	WEIGHT:
SPEC.:	DIM.: Length=1m	SERIAL No.:
MFR.: OLYMPIA lighting	SUR.:	Shielding Angle:

pcc	80%			70%			50%			30%			10%			0
p <sub>w</sub>	50%	30%	10%	50%	30%	10%	50%	30%	10%	50%	30%	10%	50%	30%	10%	0
p <sub>fc</sub>	20%			20%			20%			20%			20%			0
RCR	RCR:Room Cavity Ratio															



C Range: 0 - 360DEG  
C Interval: 30.0DEG  
Test Speed: HIGH  
Temperature:25.3℃  
Operators:  
Test Date:2025-03-13

γ Range: 0 - 180DEG  
γ Interval: 1.0DEG  
Test System:EVERFINE GO-2000B\_V1 SYSTEM V2.00.488  
Humidity:65.0%  
Test Distance:6.360m [K=1.0000]  
Remarks:

## WEC AND CCEC

Test:U:24.00V I:0.4013A P:9.631W PF:1.000 Freq:0Hz Lamp Flux:51.1033x1 lm		
NAME: SF18-24V-5050-70-SPI-RGBW(4000K)-B	TYPE:	WEIGHT:
SPEC.:	DIM.: Length=1m	SERIAL No.:
MFR.: OLympia lighting	SUR.:	Shielding Angle:

pcc	80%			70%			50%			30%			10%			0														
pw	50%	30%	10%	50%	30%	10%	50%	30%	10%	50%	30%	10%	50%	30%	10%	0														
pfc	20%			20%			20%			20%			20%			0														
RCR	RCR:Room Cavity Ratio															Wall Exitance Coefficients(WEC)														
0.0																														
1.0	.384	.218	.069	.369	.210	.067	.340	.195	.062	.313	.181	.058	.289	.168	.054															
2.0	.332	.182	.056	.318	.175	.054	.292	.162	.050	.268	.150	.047	.245	.139	.044															
3.0	.295	.157	.047	.282	.151	.045	.258	.140	.043	.236	.129	.040	.216	.119	.037															
4.0	.265	.138	.040	.253	.133	.039	.232	.123	.037	.212	.114	.034	.193	.105	.032															
5.0	.241	.123	.036	.230	.118	.034	.210	.110	.032	.192	.101	.030	.175	.093	.028															
6.0	.220	.110	.032	.211	.106	.031	.193	.099	.029	.176	.091	.027	.160	.084	.025															
7.0	.203	.100	.028	.194	.097	.028	.178	.090	.026	.162	.083	.024	.147	.077	.022															
8.0	.188	.092	.026	.180	.089	.025	.165	.082	.024	.150	.076	.022	.137	.070	.020															
9.0	.175	.085	.024	.168	.082	.023	.154	.076	.022	.140	.070	.020	.128	.065	.019															
10.0	.164	.079	.022	.157	.076	.021	.144	.071	.020	.131	.065	.019	.120	.060	.017															

pcc	80%			70%			50%			30%			10%			0
pw	50%	30%	10%	50%	30%	10%	50%	30%	10%	50%	30%	10%	50%	30%	10%	0
pfc	20%			20%			20%			20%			20%			0
RCR	RCR:Room Cavity Ratio						Ceiling Cavity Exitance Coefficients (CCEC)									
0.0	.395	.395	.395	.338	.338	.338	.231	.231	.231	.133	.133	.133	.042	.042	.042	
1.0	.392	.362	.335	.335	.311	.288	.229	.214	.199	.132	.124	.116	.042	.040	.038	
2.0	.386	.340	.301	.330	.292	.260	.226	.202	.182	.131	.118	.106	.042	.038	.035	
3.0	.378	.324	.280	.324	.279	.243	.223	.194	.170	.129	.113	.100	.041	.037	.033	
4.0	.371	.311	.266	.318	.269	.231	.219	.188	.163	.127	.110	.096	.041	.036	.032	
5.0	.363	.302	.256	.312	.261	.223	.215	.182	.158	.124	.107	.093	.040	.035	.031	
6.0	.356	.294	.250	.306	.255	.217	.211	.178	.154	.122	.105	.091	.040	.034	.030	
7.0	.349	.288	.245	.300	.249	.213	.207	.175	.151	.121	.103	.090	.039	.034	.030	
8.0	.342	.282	.241	.295	.245	.210	.204	.172	.149	.119	.101	.089	.038	.033	.029	
9.0	.336	.277	.238	.290	.241	.207	.201	.169	.147	.117	.100	.088	.038	.033	.029	
10.0	.330	.273	.235	.285	.237	.205	.198	.167	.146	.115	.099	.087	.037	.032	.029	

C Range: 0 - 360DEG  
C Interval: 30.0DEG  
Test Speed: HIGH  
Temperature:25.3℃  
Operators:  
Test Date:2025-03-13

γ Range: 0 - 180DEG  
γ Interval: 1.0DEG  
Test System:EVERFINE GO-2000B\_V1 SYSTEM V2.00.488  
Humidity:65.0%  
Test Distance:6.360m [K=1.0000]  
Remarks:

UGR(Unified Glare Rating) Table

Test:U:24.00V I:0.4013A P:9.631W PF:1.000 Freq:0Hz Lamp Flux:51.1033x1 lm										
NAME: SF18-24V-5050-70-SPI-RGBW(4000K)-B					TYPE:			WEIGHT:		
SPEC.:					DIM.: Length=1m			SERIAL No.:		
MFR.: OLympia lighting					SUR.:			Shielding Angle:		
ceiling/cavity	0.7	0.7	0.5	0.5	0.3	0.7	0.7	0.5	0.5	0.3
walls	0.5	0.3	0.5	0.3	0.3	0.5	0.3	0.5	0.3	0.3
working plane	0.2	0.2	0.2	0.2	0.2	0.2	0.2	0.2	0.2	0.2
Room dimensions	Viewed crosswise					Viewed endwise				
x = 2H y = 2H	21.7	22.9	22.3	23.6	24.3	18.5	19.7	19.1	20.4	21.1
3H	24.4	25.6	25.1	26.3	27.0	20.1	21.3	20.8	22.0	22.7
4H	25.9	27.0	26.6	27.7	28.5	20.9	22.0	21.5	22.7	23.5
6H	27.6	28.6	28.2	29.3	30.1	21.5	22.5	22.2	23.2	24.1
8H	28.5	29.5	29.2	30.2	31.0	21.7	22.8	22.4	23.5	24.3
12H	29.5	30.5	30.2	31.2	32.1	21.9	22.9	22.6	23.6	24.5
4H 2H	22.1	23.2	22.8	23.9	24.7	19.9	21.0	20.5	21.6	22.4
3H	25.2	26.2	25.9	26.9	27.7	21.7	22.7	22.4	23.4	24.2
4H	26.9	27.8	27.6	28.5	29.4	22.6	23.5	23.3	24.2	25.1
6H	28.7	29.5	29.5	30.3	31.2	23.4	24.2	24.2	25.0	25.9
8H	29.7	30.5	30.5	31.2	32.2	23.7	24.5	24.5	25.2	26.2
12H	30.9	31.6	31.7	32.4	33.3	24.0	24.7	24.8	25.5	26.4
8H 4H	27.1	27.9	27.9	28.7	29.6	23.8	24.5	24.6	25.3	26.2
6H	29.3	29.9	30.1	30.7	31.7	24.9	25.5	25.7	26.3	27.3
8H	30.5	31.1	31.3	31.9	32.9	25.4	26.0	26.2	26.8	27.8
12H	32.0	32.5	32.8	33.3	34.3	25.9	26.4	26.7	27.2	28.2
12H 4H	27.1	27.8	27.9	28.6	29.5	24.2	24.9	25.0	25.7	26.6
6H	29.4	29.9	30.2	30.7	31.7	25.5	26.1	26.3	26.9	27.9
8H	30.7	31.2	31.5	32.0	33.0	26.2	26.7	27.0	27.5	28.5
Variations with the observer position at spacings(CIE Pub.117):										
S = 1.0H	+ 0.1 / - 0.1					+ 0.1 / - 0.1				
1.5H	+ 0.2 / - 0.2					+ 0.2 / - 0.3				
2.0H	+ 0.2 / - 0.3					+ 0.2 / - 0.4				

CIE Pub.117, 51.10 lm Total Lamp Luminous Flux Correct (8log(F/F0) = -10.3)  
Area: 0.0165 m2

C Range: 0 - 360DEG  
C Interval: 30.0DEG  
Test Speed: HIGH  
Temperature:25.3℃  
Operators:  
Test Date:2025-03-13

γ Range: 0 - 180DEG  
γ Interval: 1.0DEG  
Test System:EVERFINE GO-2000B\_V1 SYSTEM V2.00.488  
Humidity:65.0%  
Test Distance:6.360m [K=1.0000]  
Remarks:

## UTILIZATION FACTORS TABLE

Test:U:24.00V I:0.4013A P:9.631W PF:1.000 Freq:0Hz Lamp Flux:51.1033x1 lm		
NAME: SF18-24V-5050-70-SPI-RGBW(4000K)-B	TYPE:	WEIGHT:
SPEC.:	DIM.: Length=1m	SERIAL No.:
MFR.: OLympia lighting	SUR.:	Shielding Angle:

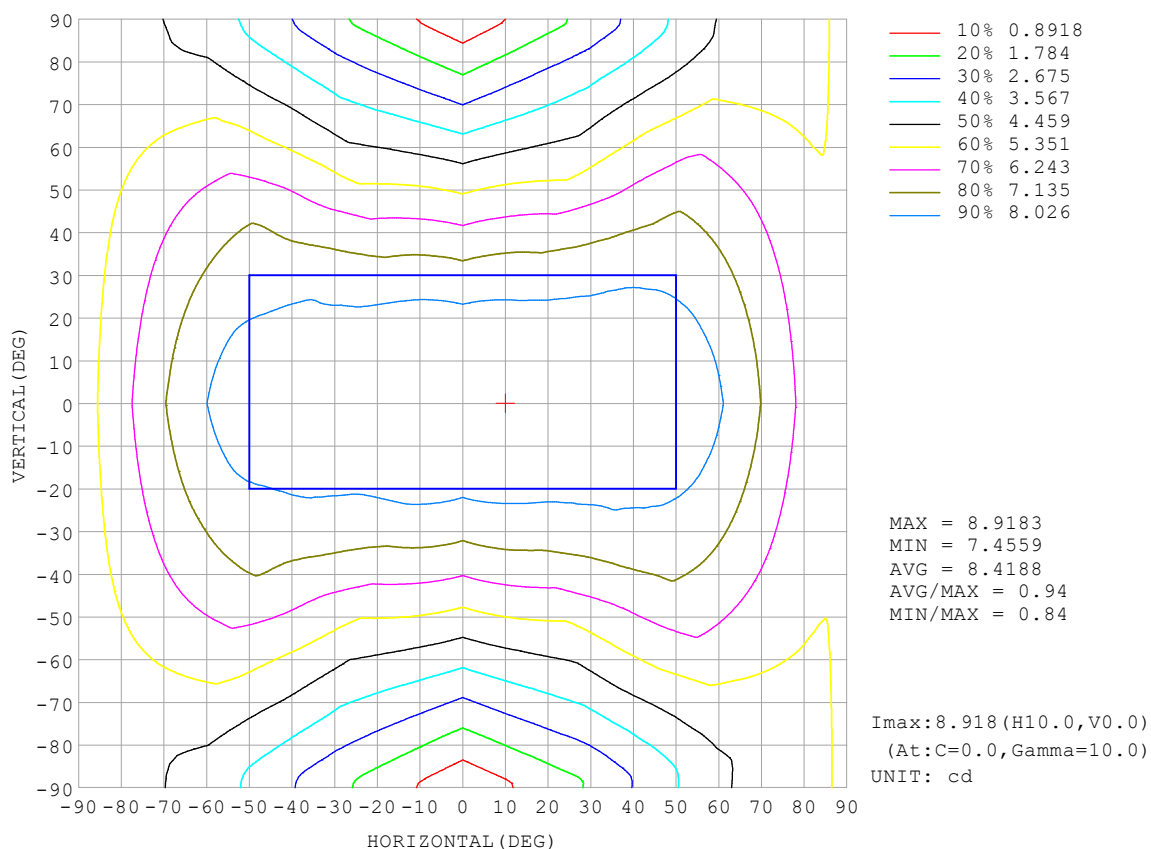
REFLECTANCE										
Ceiling	0.8	0.8	0.8	0.7	0.7	0.7	0.5	0.5	0.5	0
Walls	0.7	0.5	0.3	0.7	0.5	0.3	0.7	0.5	0.3	0
Working plane	0.2	0.2	0.2	0.2	0.2	0.2	0.2	0.2	0.2	0
ROOM INDEX	UTILIZATION FACTORS (PERCENT) $k(RI) \times RCR = 5$									
$k = 0.60$	44	32	25	43	31	24	41	30	24	17
0.80	53	40	32	52	39	32	48	37	30	22
1.00	61	48	39	59	47	39	55	46	37	27
1.25	68	55	46	65	53	45	60	50	43	32
1.50	73	61	52	70	59	50	64	55	48	36
2.00	81	69	61	77	67	59	70	62	55	42
2.50	85	75	67	81	72	64	74	66	60	45
3.00	89	80	72	85	76	69	77	70	64	49
4.00	94	86	79	89	82	76	81	75	70	53
5.00	97	90	84	92	86	80	83	78	74	56
ROOM INDEX	UF (total)									Direct
According to DIN EN 13032-2 2004			Suspended					SHRNOM = 1.25		

C Range: 0 - 360DEG  
 C Interval: 30.0DEG  
 Test Speed: HIGH  
 Temperature: 25.3 °C  
 Operators:  
 Test Date: 2025-03-13

γ Range: 0 - 180DEG  
 γ Interval: 1.0DEG  
 Test System: EVERFINE GO-2000B\_V1 SYSTEM V2.00.488  
 Humidity: 65.0%  
 Test Distance: 6.360m [K=1.0000]  
 Remarks:

## ISOCANDELA DIAGRAM

Test:U:24.00V I:0.4013A P:9.631W PF:1.000 Freq:0Hz Lamp Flux:51.1033x1 lm		
NAME: SF18-24V-5050-70-SPI-RGBW(4000K)-B	TYPE:	WEIGHT:
SPEC.:	DIM.: Length=1m	SERIAL No.:
MFR.: OLympia lighting	SUR.:	Shielding Angle:



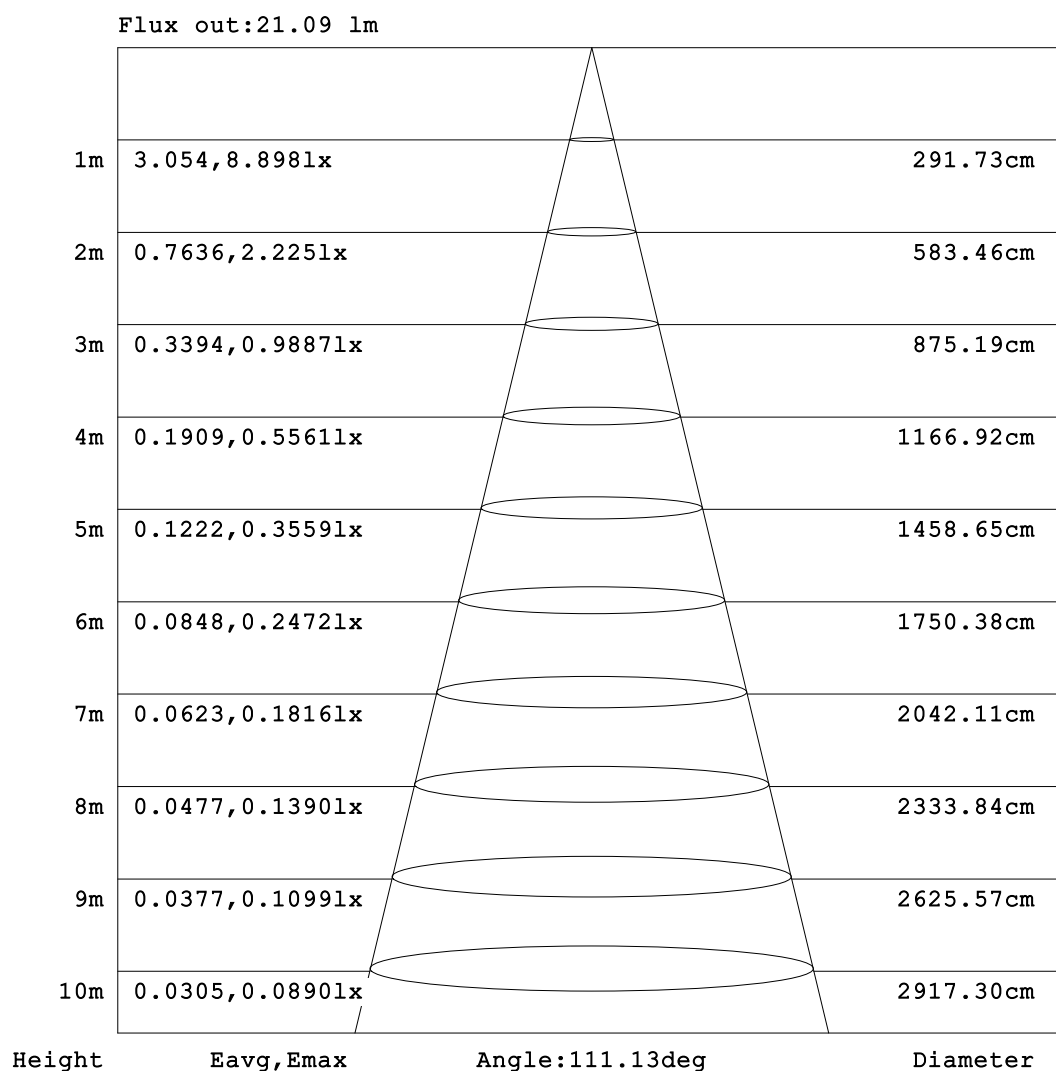
C Range: 0 - 360DEG  
C Interval: 30.0DEG  
Test Speed: HIGH  
Temperature: 25.3°C  
Operators:  
Test Date: 2025-03-13

γ Range: 0 - 180DEG  
γ Interval: 1.0DEG  
Test System: EVERFINE GO-2000B\_V1 SYSTEM V2.00.488  
Humidity: 65.0%  
Test Distance: 6.360m [K=1.0000]  
Remarks:



## AAI Figure

Test:U:24.00V I:0.4013A P:9.631W PF:1.000 Freq:0Hz Lamp Flux:51.1033x1 lm		
NAME: SF18-24V-5050-70-SPI-RGBW(4000K)-B	TYPE:	WEIGHT:
SPEC.:	DIM.: Length=1m	SERIAL No.:
MFR.: OLympia lighting	SUR.:	Shielding Angle:



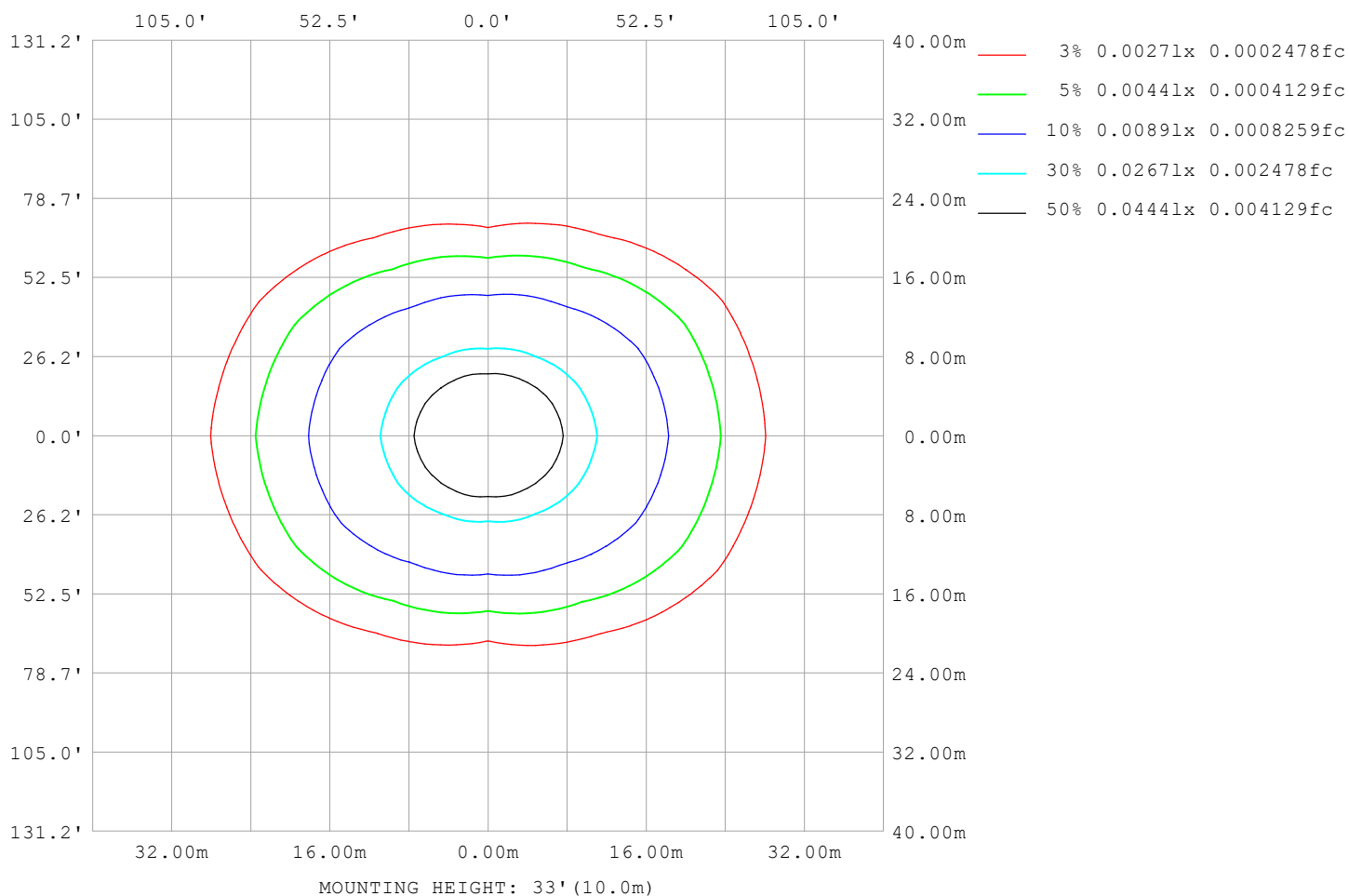
Note:The Curves indicate the illuminated area and the average illumination when the luminaire is at different distance.

C Range: 0 - 360DEG  
C Interval: 30.0DEG  
Test Speed: HIGH  
Temperature:25.3℃  
Operators:  
Test Date:2025-03-13

γ Range: 0 - 180DEG  
γ Interval: 1.0DEG  
Test System:EVERFINE GO-2000B\_V1 SYSTEM V2.00.488  
Humidity:65.0%  
Test Distance:6.360m [K=1.0000]  
Remarks:

## ISOLUX DIAGRAM

Test:U:24.00V I:0.4013A P:9.631W PF:1.000 Freq:0Hz Lamp Flux:51.1033x1 lm		
NAME: SF18-24V-5050-70-SPI-RGBW(4000K)-B	TYPE:	WEIGHT:
SPEC.:	DIM.: Length=1m	SERIAL No.:
MFR.: OLympia lighting	SUR.:	Shielding Angle:



C Range: 0 - 360DEG  
C Interval: 30.0DEG  
Test Speed: HIGH  
Temperature:25.3℃  
Operators:  
Test Date:2025-03-13

γ Range: 0 - 180DEG  
γ Interval: 1.0DEG  
Test System:EVERFINE GO-2000B\_V1 SYSTEM V2.00.488  
Humidity:65.0%  
Test Distance:6.360m [K=1.0000]  
Remarks:

## LED Avg.L Report

Test:U:24.00V I:0.4013A P:9.631W PF:1.000 Freq:0Hz Lamp Flux:51.1033x1 lm		
NAME: SF18-24V-5050-70-SPI-RGBW(4000K)-B	TYPE:	WEIGHT:
SPEC.:	DIM.: Length=1m	SERIAL No.:
MFR.: OLympia lighting	SUR.:	Shielding Angle:

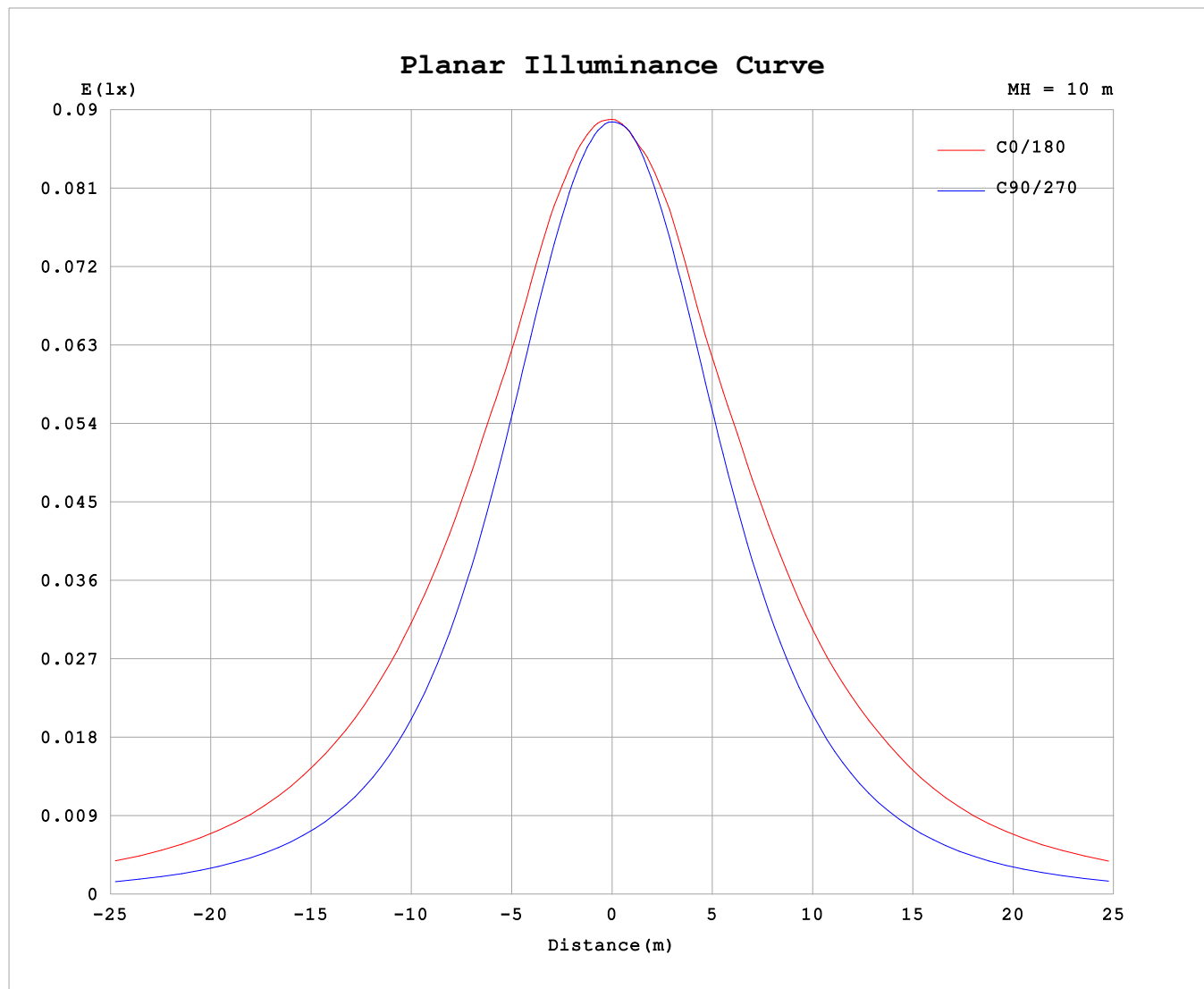
AvgL	cd/m2
L_0~180 (65) av	1087
L_0~180 (75) av	1531
L_0~180 (85) av	3828
L_90~270 (65) av	466
L_90~270 (75) av	464
L_90~270 (85) av	535
L_45 (65) av	808
L_45 (75) av	1092
L_45 (85) av	2467

Standard: GB/T 29293-2012

C Range: 0 - 360DEG  
C Interval: 30.0DEG  
Test Speed: HIGH  
Temperature:25.3℃  
Operators:  
Test Date:2025-03-13

γ Range: 0 - 180DEG  
γ Interval: 1.0DEG  
Test System:EVERFINE GO-2000B\_V1 SYSTEM V2.00.488  
Humidity:65.0%  
Test Distance:6.360m [K=1.0000]  
Remarks:

## Planar Illuminance Curve



C Range: 0 - 360DEG  
C Interval: 30.0DEG  
Test Speed: HIGH  
Temperature: 25.3 °C  
Operators:  
Test Date: 2025-03-13

$\gamma$  Range: 0 - 180DEG  
 $\gamma$  Interval: 1.0DEG  
Test System: EVERFINE GO-2000B\_V1 SYSTEM V2.00.488  
Humidity: 65.0%  
Test Distance: 6.360m [K=1.0000]  
Remarks:

## LUMINOUS DISTRIBUTION INTENSITY DATA

Test:U:24.00V I:0.4013A P:9.631W PF:1.000 Freq:0Hz Lamp Flux:51.1033x1 lm																	
NAME: SF18-24V-5050-70-SPI-RGBW(4000K)-B									TYPE:						WEIGHT:		
SPEC.:									DIM.: Length=1m						SERIAL No.:		
MFR.: OLympia lighting									SUR.:						Shielding Angle:		

Table--1

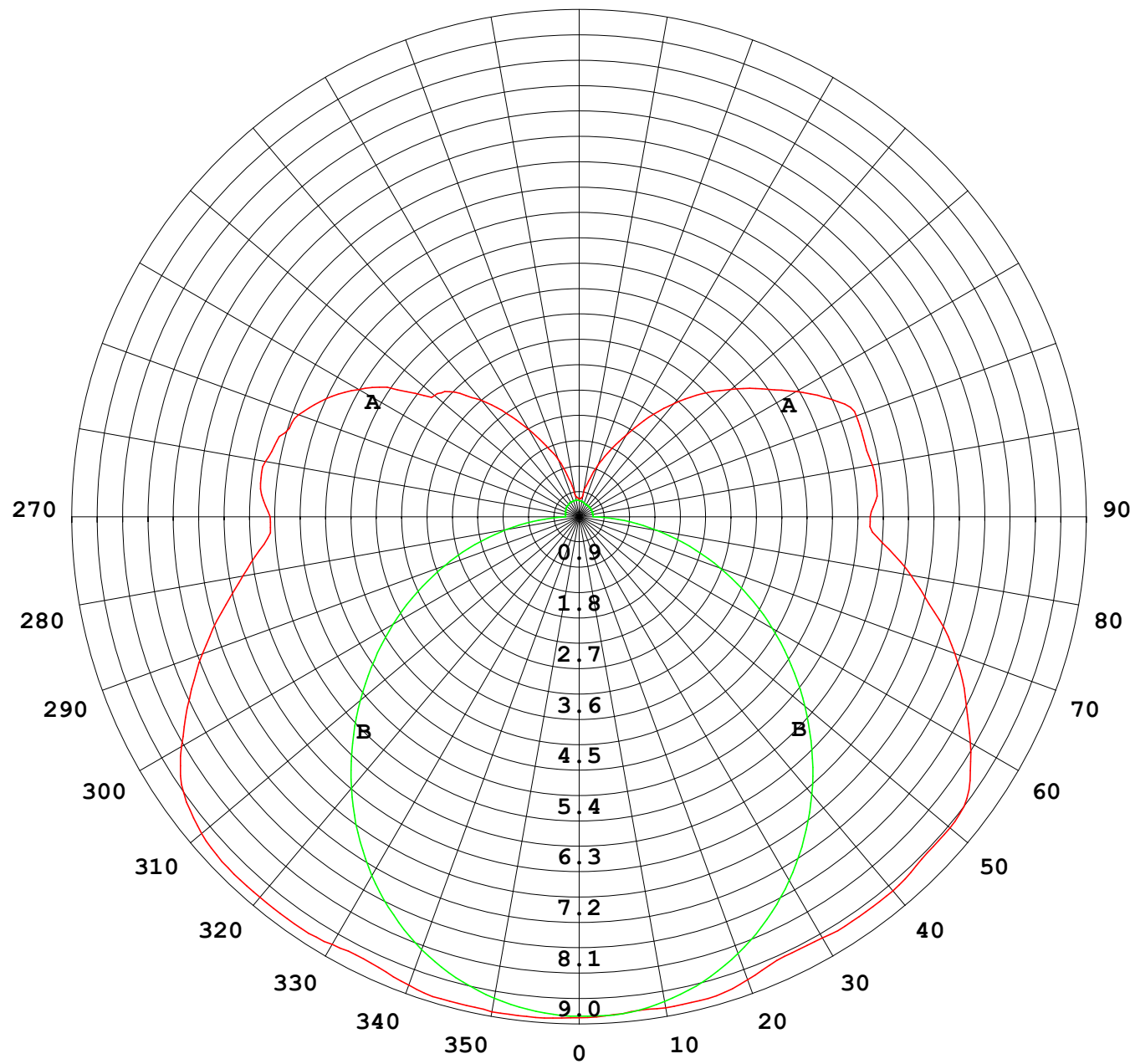
UNIT: cd

C (DEG) γ (DEG)	0	30	60	90	120	150	180	210	240	270	300	330						
0	8.88	8.88	8.88	8.88	8.88	8.88	8.88	8.88	8.88	8.88	8.88	8.88						
5	8.90	8.88	8.87	8.82	8.85	8.82	8.84	8.84	8.83	8.87	8.87	8.90						
10	8.91	8.83	8.79	8.69	8.71	8.76	8.84	8.76	8.71	8.75	8.80	8.89						
15	8.89	8.76	8.61	8.48	8.53	8.74	8.83	8.76	8.53	8.55	8.64	8.82						
20	8.83	8.68	8.38	8.19	8.36	8.63	8.73	8.67	8.38	8.26	8.41	8.76						
25	8.73	8.51	8.13	7.81	8.15	8.40	8.60	8.45	8.16	7.90	8.16	8.59						
30	8.75	8.31	7.82	7.37	7.81	8.23	8.62	8.27	7.85	7.47	7.87	8.41						
35	8.80	8.25	7.42	6.86	7.37	8.14	8.65	8.19	7.43	6.97	7.49	8.35						
40	8.80	8.10	6.98	6.30	6.88	8.00	8.65	8.05	6.96	6.43	7.07	8.21						
45	8.80	7.93	6.48	5.70	6.39	7.85	8.58	7.91	6.47	5.85	6.59	8.05						
50	8.73	7.75	5.94	5.08	5.85	7.60	8.58	7.67	5.95	5.24	6.07	7.88						
55	8.55	7.49	5.35	4.44	5.29	7.36	8.43	7.43	5.39	4.60	5.49	7.65						
60	8.14	7.16	4.85	3.82	4.79	7.11	8.00	7.20	4.88	3.96	4.99	7.36						
65	7.62	6.78	4.38	3.18	4.33	6.67	7.55	6.76	4.41	3.32	4.54	7.01						
70	7.11	6.29	3.89	2.55	3.88	6.15	7.08	6.22	3.93	2.66	4.10	6.58						
75	6.56	5.65	3.38	1.92	3.43	5.64	6.51	5.71	3.47	2.04	3.66	5.98						
80	6.05	5.06	2.81	1.31	2.93	5.05	5.97	5.10	2.98	1.41	3.13	5.40						
85	5.61	4.49	2.27	0.72	2.41	4.46	5.40	4.51	2.45	0.81	2.58	4.83						
90	5.48	4.33	1.89	0.25	2.03	4.12	5.16	4.08	1.98	0.28	2.12	4.50						
95	5.67	4.51	2.01	0.25	1.99	4.25	5.30	4.13	1.93	0.25	2.13	4.60						
100	5.65	4.63	1.73	0.25	1.92	4.45	5.27	4.34	1.87	0.25	1.80	4.64						
105	5.50	4.40	1.54	0.26	1.88	4.52	5.23	4.46	1.83	0.25	1.63	4.59						
110	5.29	4.06	1.46	0.26	1.87	4.31	5.23	4.30	1.82	0.25	1.59	4.27						
115	4.95	3.72	1.55	0.27	1.85	3.90	4.93	3.90	1.80	0.25	1.45	3.94						
120	4.51	3.19	1.49	0.27	1.71	3.54	4.44	3.53	1.67	0.25	1.39	3.52						
125	3.93	3.00	1.29	0.28	1.54	3.21	3.96	3.22	1.50	0.25	1.20	3.02						
130	3.35	2.83	1.14	0.29	1.33	2.86	3.52	2.87	1.28	0.25	1.08	2.83						
135	3.13	2.28	0.96	0.29	1.14	2.49	3.09	2.51	1.09	0.25	0.89	2.16						
140	2.70	1.68	0.80	0.29	0.96	2.09	2.62	2.12	0.92	0.25	0.73	1.72						
145	2.23	1.36	0.68	0.30	0.81	1.68	2.15	1.70	0.76	0.25	0.60	1.28						
150	1.78	1.08	0.57	0.30	0.65	1.33	1.67	1.36	0.60	0.25	0.47	0.95						
155	1.39	0.83	0.47	0.30	0.54	1.04	1.29	1.07	0.50	0.25	0.38	0.81						
160	1.08	0.62	0.42	0.30	0.46	0.77	0.97	0.80	0.43	0.27	0.36	0.58						
165	0.69	0.43	0.36	0.30	0.40	0.54	0.65	0.57	0.37	0.27	0.32	0.40						
170	0.39	0.34	0.34	0.31	0.37	0.40	0.37	0.43	0.35	0.28	0.31	0.35						
175	0.34	0.32	0.33	0.30	0.35	0.34	0.33	0.38	0.33	0.28	0.30	0.32						
180	0.32	0.32	0.31	0.30	0.31	0.30	0.32	0.32	0.31	0.29	0.29	0.30						

C Range: 0 - 360DEG  
C Interval: 30.0DEG  
Test Speed: HIGH  
Temperature:25.3℃  
Operators:  
Test Date:2025-03-13

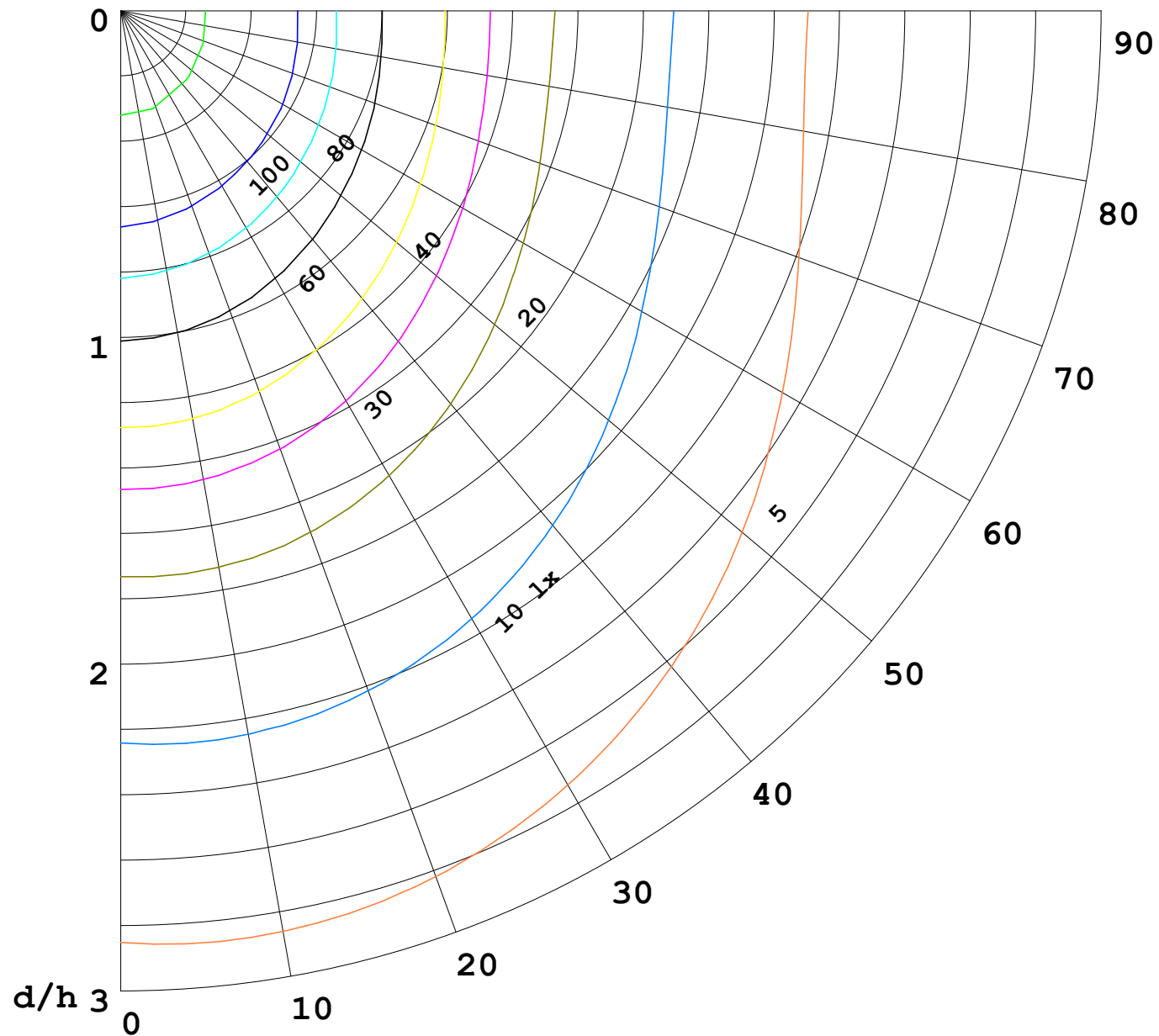
γ Range: 0 - 180DEG  
γ Interval: 1.0DEG  
Test System:EVERFINE GO-2000B\_V1 SYSTEM V2.00.488  
Humidity:65.0%  
Test Distance:6.360m [K=1.0000]  
Remarks:

I (cd)



1000 lm

$\kappa = 1$



F = 1000 lm  
 K = 0.7  
 Hcc = 0.8 m  
 Hfc = 0.0 m  
 Eave = 100 lx

	Pcc	Pw	Pfc
—————	70	50	30
—————	50	30	20

