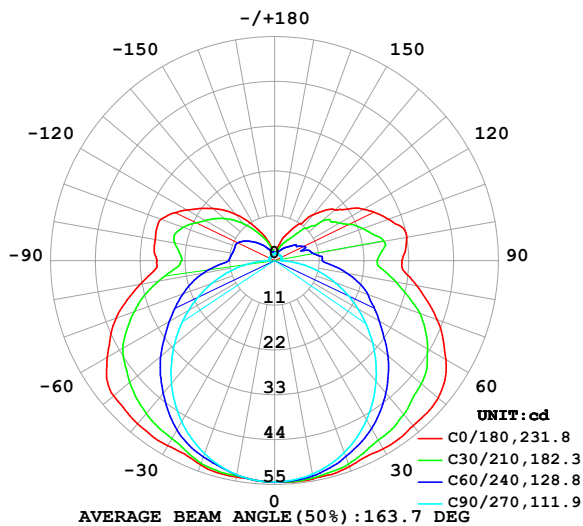


## LUMINAIRE PHOTOMETRIC TEST REPORT

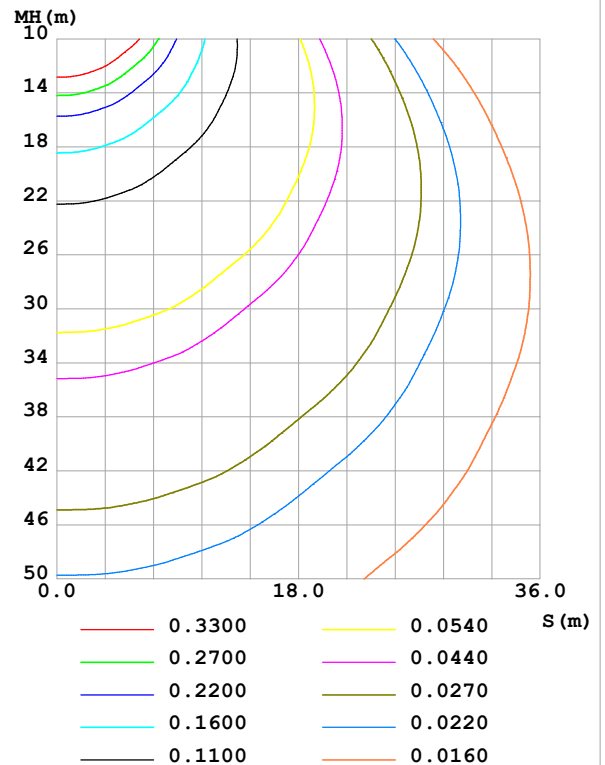
Test:U:24.00V I:0.4632A P:11.12W PF:1.000 Freq:0Hz Lamp Flux:302.892x1 lm		
NAME: SF18-24V-5050-70-SPI-RGBW(2700K)-W	TYPE:	WEIGHT:
SPEC.:	DIM.: Length=1m	SERIAL No.:
MFR.: Olym pia lighting	SUR.:	Shielding Angle:

DATA OF LAMP		PHOTOMETRIC DATA Eff: 27.25 lm/W			
MODEL	5050	I <sub>max</sub> (cd)	54.57	S/MH(C0/180)	1.49
NOMINAL POWER(W)		LOR(%)	100.0	S/MH(C90/270)	1.25
RATED VOLTAGE(V)	24	TOTAL FLUX(lm)	302.89	η UP,DN(C0-180)	13.0,37.1
NOMINAL FLUX(lm)	302.892	CIE CLASS	SEMI-D.	η UP,DN(C180-360)	12.7,37.2
LAMPS INSIDE	1	η up (%)	25.7	CIBSE SHR NOM	1.50
TEST VOLTAGE(V)		η down (%)	74.3	CIBSE SHR MAX	1.55

LUMINOUS INTENSITY DISTRIBUTION DIAGRAM



C0 PLANE ISOLUX DIAGRAM (UNIT:lx)



C Range: 0 - 360DEG  
C Interval: 30.0DEG  
Test Speed: HIGH  
Temperature:25.3℃  
Operators:  
Test Date:2025-03-17

γ Range: 0 - 180DEG  
γ Interval: 1.0DEG  
Test System:EVERFINE GO-2000B\_V1 SYSTEM V2.00.488  
Humidity:65.0%  
Test Distance:6.360m [K=1.0000]  
Remarks:

## ZONAL FLUX DIAGRAM

## ZONAL FLUX DIAGRAM:

$\gamma$	C0	C45	C90	C135	C180	C225	C270	C315	$\gamma$	$\Phi$ zone	$\Phi$ total	%lum,lamp
10	54.42	53.99	53.26	53.51	53.97	53.60	53.42	54.12	0- 10	5.163	5.163	1.7,1.7
20	53.78	52.18	50.14	51.95	53.34	52.12	50.44	52.44	10- 20	15.01	20.18	6.66,6.66
30	53.40	49.29	45.18	48.96	52.52	49.26	45.68	49.70	20- 30	23.42	43.60	14.4,14.4
40	52.94	45.95	38.75	45.48	52.37	45.82	39.43	46.47	30- 40	29.92	73.52	24.3,24.3
50	52.49	41.70	31.40	41.17	51.66	41.51	32.15	42.29	40- 50	33.93	107.4	35.5,35.5
60	48.55	36.56	23.67	36.08	47.47	36.44	24.38	37.15	50- 60	35.09	142.5	47.1,47.1
70	42.47	31.18	15.86	30.13	41.47	30.34	16.41	31.68	60- 70	33.05	175.6	58,58
80	35.44	24.19	8.260	23.24	33.52	23.33	8.555	24.53	70- 80	28.22	203.8	67.3,67.3
90	31.23	18.48	1.650	17.49	28.88	17.05	1.402	18.35	80- 90	21.35	225.2	74.3,74.3
100	32.97	18.59	1.757	18.26	29.82	17.76	1.390	18.46	90-100	19.11	244.3	80.6,80.6
110	29.80	15.01	1.812	17.61	29.70	17.14	1.471	16.21	100-110	18.13	262.4	86.6,86.6
120	25.29	12.77	1.826	14.97	24.93	14.59	1.479	13.39	110-120	14.99	277.4	91.6,91.6
130	19.32	10.27	1.832	12.06	19.96	11.71	1.491	10.87	120-130	11.16	288.5	95.3,95.3
140	14.73	6.603	1.829	8.852	14.86	8.589	1.471	6.852	130-140	7.350	295.9	97.7,97.7
150	9.166	4.285	1.809	5.800	9.472	5.613	1.511	4.178	140-150	4.074	300.0	99,99
160	5.682	2.762	1.791	3.678	5.483	3.547	1.615	2.729	150-160	1.975	301.9	99.7,99.7
170	2.085	2.008	1.794	2.323	2.248	2.283	1.719	1.969	160-170	0.7611	302.7	99.9,99.9
180	1.834	1.834	1.812	1.830	1.834	1.847	1.797	1.826	170-180	0.1902	302.9	100,100
DEG	LUMINOUS INTENSITY:cd									UNIT:lm		

Conical surface Flux(90deg): 90.141 lm

%lum = 29.8%

%lamp = 29.8%

Conical surface Flux(130deg): 159.49 lm

%lum = 52.7%

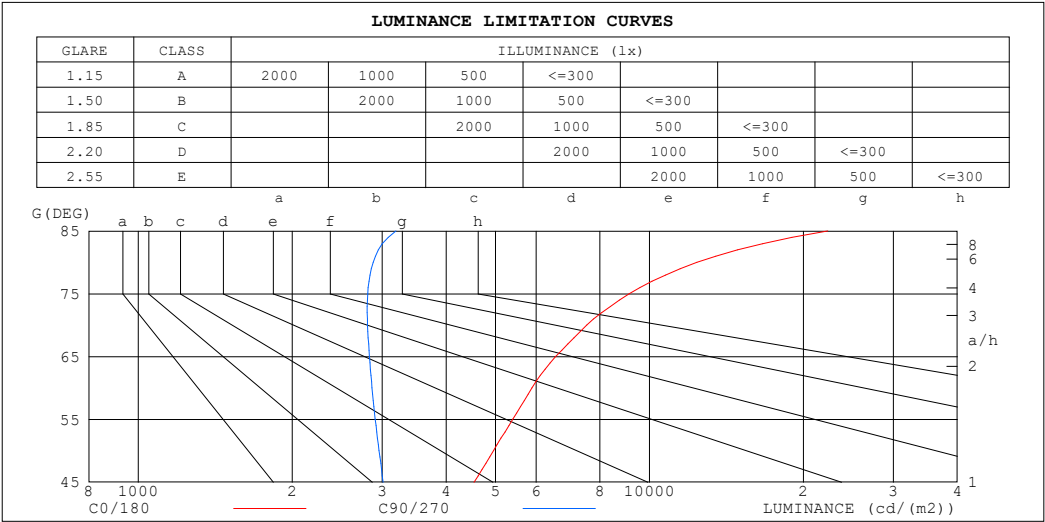
%lamp = 52.7%

C Range: 0 - 360DEG  
 C Interval: 30.0DEG  
 Test Speed: HIGH  
 Temperature:25.3℃  
 Operators:  
 Test Date:2025-03-17

$\gamma$  Range: 0 - 180DEG  
 $\gamma$  Interval: 1.0DEG  
 Test System:EVERFINE GO-2000B\_V1 SYSTEM V2.00.488  
 Humidity:65.0%  
 Test Distance:6.360m [K=1.0000]  
 Remarks:

LUMINANCE LIMITATION CURVES

Test:U:24.00V I:0.4632A P:11.12W PF:1.000 Freq:0Hz Lamp Flux:302.892x1 lm		
NAME: SF18-24V-5050-70-SPI-RGBW(2700K)-W	TYPE:	WEIGHT:
SPEC.:	DIM.: Length=1m	SERIAL No.:
MFR.: OLympia lighting	SUR.:	Shielding Angle:



LUMINANCE cd/(m2)		
G (DEG)	C0/180	C90/270
85	22323	3192
80	12382	2880
75	9127	2810
70	7534	2808
65	6557	2832
60	5891	2866
55	5405	2907
50	4954	2958
45	4539	3010

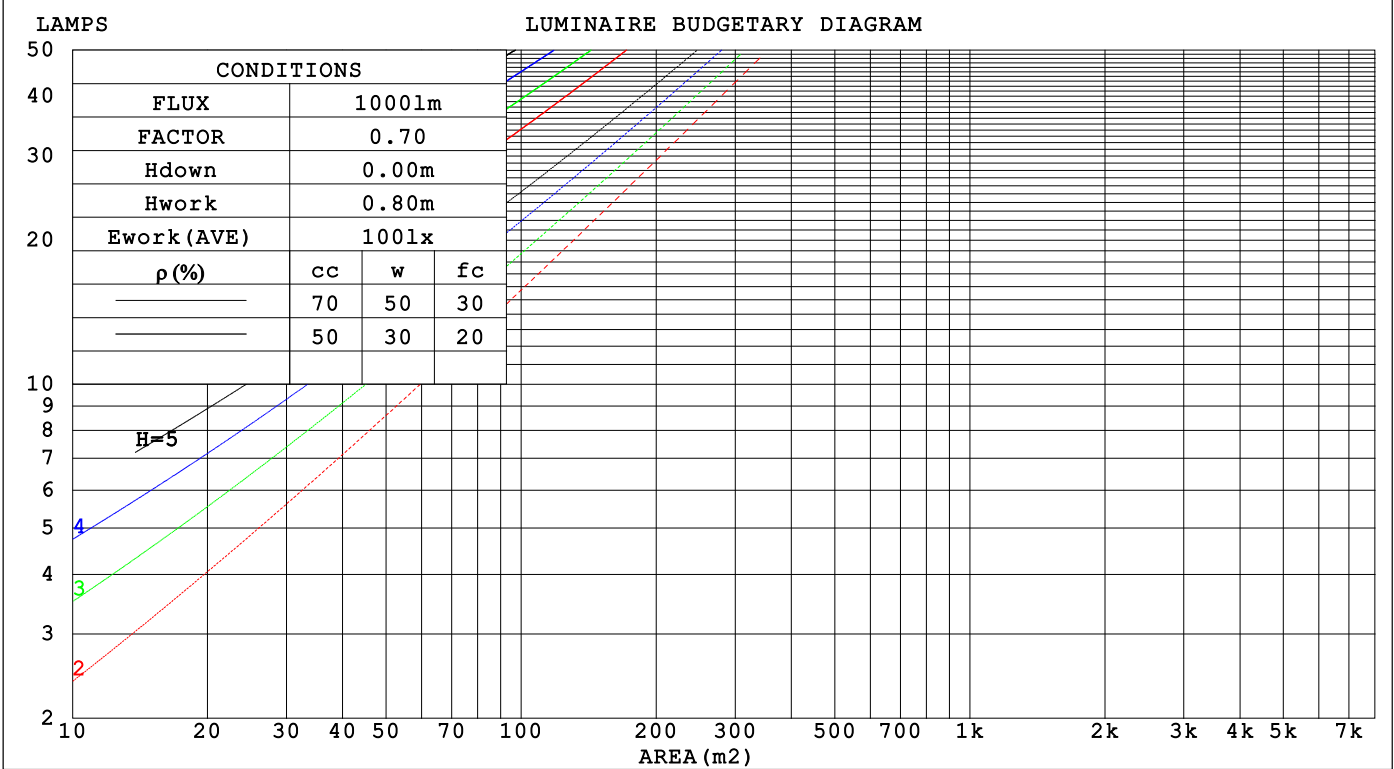
C Range: 0 - 360DEG  
C Interval: 30.0DEG  
Test Speed: HIGH  
Temperature:25.3℃  
Operators:  
Test Date:2025-03-17

γ Range: 0 - 180DEG  
γ Interval: 1.0DEG  
Test System:EVERFINE GO-2000B\_V1 SYSTEM V2.00.488  
Humidity:65.0%  
Test Distance:6.360m [K=1.0000]  
Remarks:

CU AND LUMINAIRE BUDGETARY ESTIMATE DIAGRAM

Test:U:24.00V I:0.4632A P:11.12W PF:1.000 Freq:0Hz Lamp Flux:302.892x1 lm		
NAME: SF18-24V-5050-70-SPI-RGBW(2700K)-W	TYPE:	WEIGHT:
SPEC.:	DIM.: Length=1m	SERIAL No.:
MFR.: OLYMPIA lighting	SUR.:	Shielding Angle:

pcc	80%			70%			50%			30%			10%			0
p <sub>w</sub>	50%	30%	10%	50%	30%	10%	50%	30%	10%	50%	30%	10%	50%	30%	10%	0
p <sub>fc</sub>	20%			20%			20%			20%			20%			0
RCR	RCR:Room Cavity Ratio															



C Range: 0 - 360DEG  
C Interval: 30.0DEG  
Test Speed: HIGH  
Temperature:25.3℃  
Operators:  
Test Date:2025-03-17

γ Range: 0 - 180DEG  
γ Interval: 1.0DEG  
Test System:EVERFINE GO-2000B\_V1 SYSTEM V2.00.488  
Humidity:65.0%  
Test Distance:6.360m [K=1.0000]  
Remarks:

## WEC AND CCEC

Test:U:24.00V I:0.4632A P:11.12W PF:1.000 Freq:0Hz Lamp Flux:302.892x1 lm		
NAME: SF18-24V-5050-70-SPI-RGBW(2700K)-W	TYPE:	WEIGHT:
SPEC.:	DIM.: Length=1m	SERIAL No.:
MFR.: OLympia lighting	SUR.:	Shielding Angle:

pcc	80%			70%			50%			30%			10%			0	
pw	50%	30%	10%	50%	30%	10%	50%	30%	10%	50%	30%	10%	50%	30%	10%	0	
pfc	20%			20%			20%			20%			20%			0	
RCR	RCR:Room Cavity Ratio						Wall Exitance Coefficients(WEC)										
0.0																	
1.0	.382	.217	.069	.367	.209	.067	.339	.194	.062	.313	.181	.058	.289	.168	.054		
2.0	.331	.182	.056	.318	.175	.054	.292	.162	.050	.268	.151	.047	.247	.140	.044		
3.0	.294	.157	.047	.282	.151	.045	.259	.140	.043	.237	.130	.040	.217	.120	.037		
4.0	.265	.138	.040	.254	.133	.039	.233	.123	.037	.213	.114	.034	.195	.106	.032		
5.0	.241	.123	.036	.231	.118	.034	.211	.110	.032	.193	.102	.030	.176	.094	.028		
6.0	.220	.111	.032	.211	.107	.031	.194	.099	.029	.177	.092	.027	.162	.085	.025		
7.0	.203	.101	.028	.195	.097	.028	.179	.090	.026	.163	.084	.024	.149	.077	.023		
8.0	.188	.092	.026	.181	.089	.025	.166	.083	.024	.152	.077	.022	.138	.071	.021		
9.0	.176	.085	.024	.168	.082	.023	.155	.076	.022	.141	.071	.020	.129	.066	.019		
10.0	.164	.079	.022	.158	.076	.021	.145	.071	.020	.133	.066	.019	.121	.061	.017		

pcc	80%			70%			50%			30%			10%			0
pw	50%	30%	10%	50%	30%	10%	50%	30%	10%	50%	30%	10%	50%	30%	10%	0
pfc	20%			20%			20%			20%			20%			0
RCR	RCR:Room Cavity Ratio						Ceiling Cavity Exitance Coefficients (CCEC)									
0.0	.386	.386	.386	.330	.330	.330	.225	.225	.225	.129	.129	.129	.041	.041	.041	
1.0	.382	.353	.326	.327	.303	.280	.224	.208	.194	.129	.120	.113	.041	.039	.036	
2.0	.376	.330	.292	.322	.284	.252	.221	.197	.176	.127	.114	.103	.041	.037	.034	
3.0	.369	.314	.270	.316	.271	.234	.217	.188	.164	.125	.110	.097	.040	.036	.032	
4.0	.361	.302	.256	.310	.261	.223	.213	.182	.157	.123	.106	.093	.040	.035	.031	
5.0	.354	.292	.247	.304	.253	.215	.209	.177	.152	.121	.104	.090	.039	.034	.030	
6.0	.346	.284	.240	.298	.246	.209	.205	.172	.148	.119	.101	.088	.038	.033	.029	
7.0	.339	.278	.235	.292	.241	.205	.202	.169	.145	.117	.099	.086	.038	.033	.029	
8.0	.333	.272	.231	.286	.236	.201	.198	.166	.143	.115	.098	.085	.037	.032	.028	
9.0	.327	.268	.228	.281	.232	.199	.195	.163	.141	.114	.096	.084	.037	.032	.028	
10.0	.321	.264	.226	.276	.229	.197	.192	.161	.140	.112	.095	.083	.036	.031	.028	

C Range: 0 - 360DEG  
C Interval: 30.0DEG  
Test Speed: HIGH  
Temperature:25.3℃  
Operators:  
Test Date:2025-03-17

γ Range: 0 - 180DEG  
γ Interval: 1.0DEG  
Test System:EVERFINE GO-2000B\_V1 SYSTEM V2.00.488  
Humidity:65.0%  
Test Distance:6.360m [K=1.0000]  
Remarks:

## UGR(Unified Glare Rating) Table

Test:U:24.00V I:0.4632A P:11.12W PF:1.000 Freq:0Hz Lamp Flux:302.892x1 lm											
NAME: SF18-24V-5050-70-SPI-RGBW(2700K)-W						TYPE:		WEIGHT:			
SPEC.:						DIM.: Length=1m		SERIAL No.:			
MFR.: OLympia lighting						SUR.:		Shielding Angle:			
ceiling/cavity	0.7	0.7	0.5	0.5	0.3	0.7	0.7	0.5	0.5	0.3	
walls	0.5	0.3	0.5	0.3	0.3	0.5	0.3	0.5	0.3	0.3	
working plane	0.2	0.2	0.2	0.2	0.2	0.2	0.2	0.2	0.2	0.2	
Room dimensions		Viewed crosswise					Viewed endwise				
x = 2H y = 2H	2H	21.8	23.1	22.4	23.7	24.4	18.7	20.0	19.3	20.6	21.3
	3H	24.6	25.7	25.2	26.4	27.1	20.4	21.6	21.1	22.3	23.0
	4H	26.0	27.2	26.7	27.8	28.6	21.2	22.3	21.9	23.0	23.8
	6H	27.6	28.7	28.3	29.4	30.1	21.9	22.9	22.6	23.6	24.4
	8H	28.5	29.5	29.2	30.2	31.0	22.1	23.2	22.8	23.8	24.7
	12H	29.5	30.5	30.2	31.2	32.0	22.3	23.3	23.0	24.0	24.8
4H	2H	22.3	23.4	22.9	24.1	24.8	20.1	21.2	20.8	21.9	22.7
	3H	25.3	26.3	26.0	27.0	27.8	22.0	23.0	22.7	23.7	24.5
	4H	27.0	27.9	27.7	28.6	29.4	23.0	23.9	23.7	24.6	25.4
	6H	28.8	29.6	29.5	30.3	31.2	23.8	24.6	24.5	25.4	26.2
	8H	29.8	30.5	30.5	31.3	32.2	24.2	24.9	24.9	25.7	26.6
	12H	30.9	31.6	31.7	32.4	33.3	24.4	25.1	25.2	25.9	26.8
8H	4H	27.3	28.0	28.0	28.8	29.7	24.1	24.9	24.9	25.6	26.5
	6H	29.4	30.0	30.1	30.8	31.7	25.3	25.9	26.1	26.7	27.7
	8H	30.6	31.1	31.4	31.9	32.9	25.8	26.4	26.6	27.2	28.2
	12H	32.0	32.5	32.8	33.3	34.3	26.3	26.8	27.1	27.6	28.6
12H	4H	27.3	28.0	28.0	28.7	29.7	24.5	25.2	25.3	26.0	26.9
	6H	29.5	30.0	30.3	30.8	31.8	25.9	26.4	26.7	27.2	28.2
	8H	30.8	31.3	31.6	32.1	33.1	26.6	27.1	27.4	27.9	28.9
Variations with the observer position at spacings(CIE Pub.117):											
S = 1.0H		+ 0.1 / - 0.1					+ 0.1 / - 0.1				
1.5H		+ 0.2 / - 0.2					+ 0.2 / - 0.3				
2.0H		+ 0.2 / - 0.3					+ 0.2 / - 0.4				

CIE Pub.117, 302.9 lm Total Lamp Luminous Flux Correct (8log(F/F0) = -4.1)  
Area: 0.0165 m2

C Range: 0 - 360DEG  
C Interval: 30.0DEG  
Test Speed: HIGH  
Temperature:25.3℃  
Operators:  
Test Date:2025-03-17

γ Range: 0 - 180DEG  
γ Interval: 1.0DEG  
Test System:EVERFINE GO-2000B\_V1 SYSTEM V2.00.488  
Humidity:65.0%  
Test Distance:6.360m [K=1.0000]  
Remarks:

## UTILIZATION FACTORS TABLE

Test:U:24.00V I:0.4632A P:11.12W PF:1.000 Freq:0Hz Lamp Flux:302.892x1 lm		
NAME: SF18-24V-5050-70-SPI-RGBW(2700K)-W	TYPE:	WEIGHT:
SPEC.:	DIM.: Length=1m	SERIAL No.:
MFR.: OLympia lighting	SUR.:	Shielding Angle:

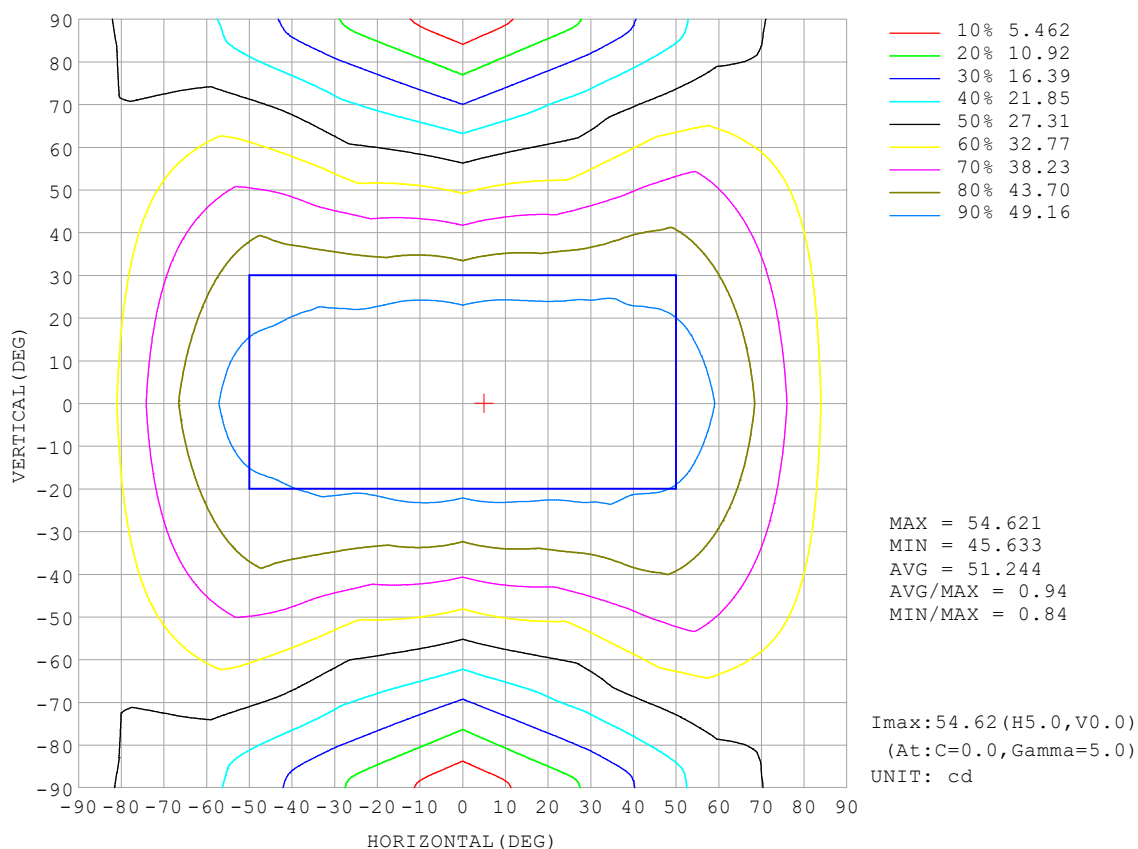
REFLECTANCE										
Ceiling	0.8	0.8	0.8	0.7	0.7	0.7	0.5	0.5	0.5	0
Walls	0.7	0.5	0.3	0.7	0.5	0.3	0.7	0.5	0.3	0
Working plane	0.2	0.2	0.2	0.2	0.2	0.2	0.2	0.2	0.2	0
ROOM INDEX	UTILIZATION FACTORS (PERCENT) $k(RI) \times RCR = 5$									
$k = 0.60$	45	32	25	44	32	25	41	31	24	17
0.80	54	41	33	52	40	32	49	38	31	23
1.00	62	48	40	59	47	39	55	47	38	28
1.25	69	56	47	66	54	46	61	51	44	33
1.50	74	61	52	71	59	51	65	56	49	37
2.00	81	70	61	78	67	60	71	63	56	43
2.50	86	75	67	82	73	65	75	67	61	46
3.00	90	80	73	86	77	70	78	71	65	50
4.00	95	86	80	90	83	77	82	76	71	54
5.00	98	91	85	93	87	81	84	79	75	57
ROOM INDEX	UF (total)									Direct
According to DIN EN 13032-2 2004			Suspended					SHRNOM = 1.25		

C Range: 0 - 360DEG  
 C Interval: 30.0DEG  
 Test Speed: HIGH  
 Temperature: 25.3 °C  
 Operators:  
 Test Date: 2025-03-17

γ Range: 0 - 180DEG  
 γ Interval: 1.0DEG  
 Test System: EVERFINE GO-2000B\_V1 SYSTEM V2.00.488  
 Humidity: 65.0%  
 Test Distance: 6.360m [K=1.0000]  
 Remarks:

## ISOCANDELA DIAGRAM

Test:U:24.00V I:0.4632A P:11.12W PF:1.000 Freq:0Hz Lamp Flux:302.892x1 lm		
NAME: SF18-24V-5050-70-SPI-RGBW(2700K)-W	TYPE:	WEIGHT:
SPEC.:	DIM.: Length=1m	SERIAL No.:
MFR.: OLympia lighting	SUR.:	Shielding Angle:



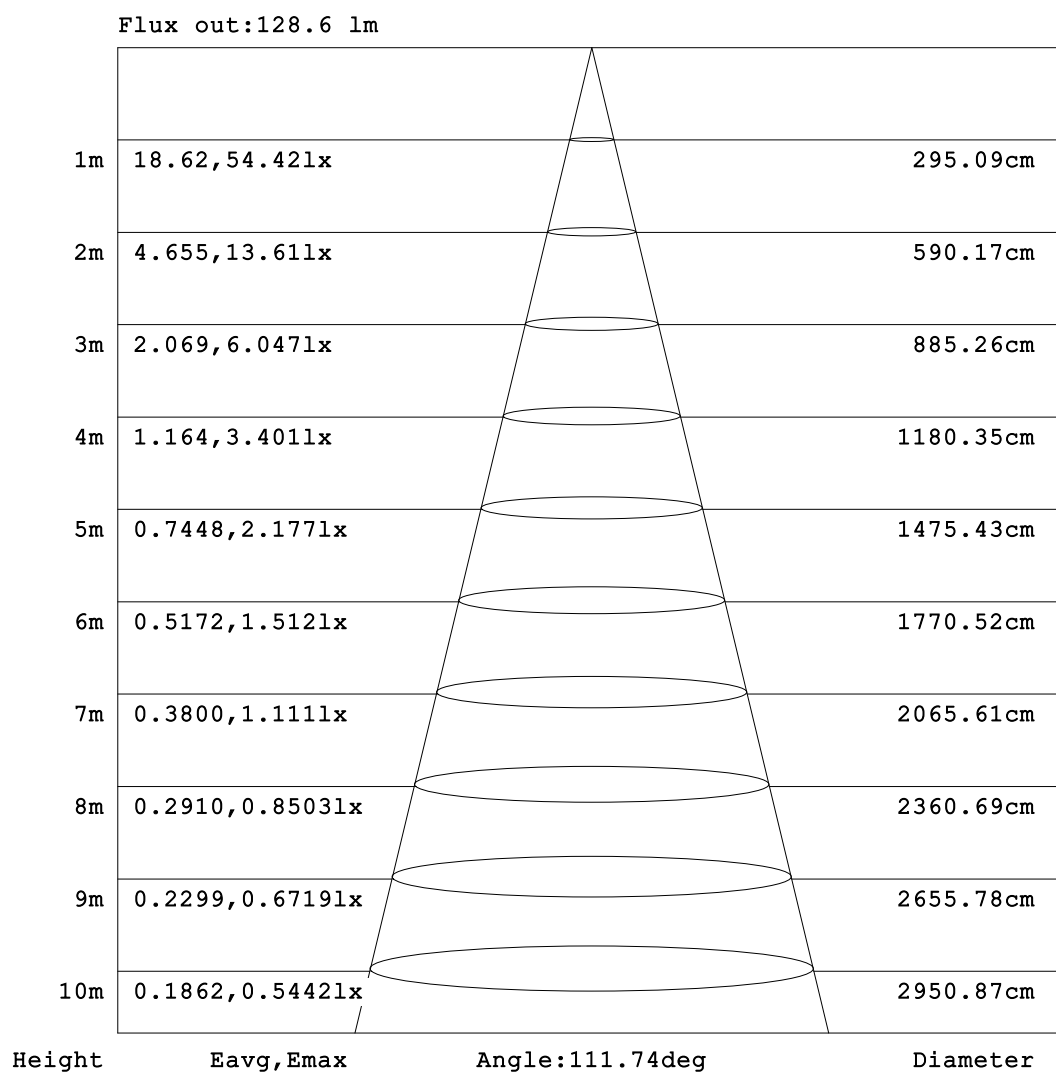
C Range: 0 - 360DEG  
C Interval: 30.0DEG  
Test Speed: HIGH  
Temperature:25.3℃  
Operators:  
Test Date:2025-03-17

γ Range: 0 - 180DEG  
γ Interval: 1.0DEG  
Test System:EVERFINE GO-2000B\_V1 SYSTEM V2.00.488  
Humidity:65.0%  
Test Distance:6.360m [K=1.0000]  
Remarks:



## AAI Figure

Test:U:24.00V I:0.4632A P:11.12W PF:1.000 Freq:0Hz Lamp Flux:302.892x1 lm		
NAME: SF18-24V-5050-70-SPI-RGBW(2700K)-W	TYPE:	WEIGHT:
SPEC.:	DIM.: Length=1m	SERIAL No.:
MFR.: OLympia lighting	SUR.:	Shielding Angle:



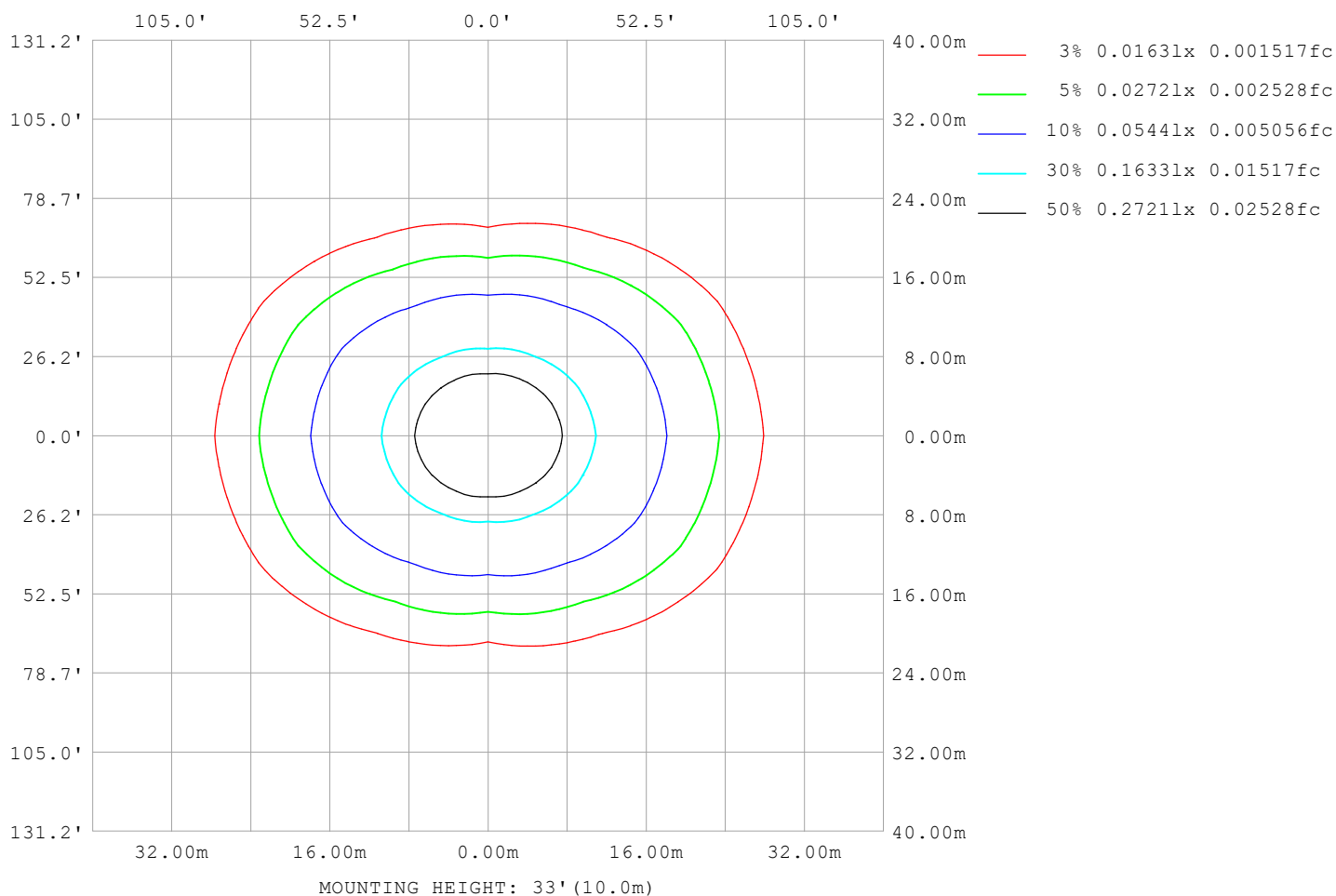
Note:The Curves indicate the illuminated area and the average illumination when the luminaire is at different distance.

C Range: 0 - 360DEG  
C Interval: 30.0DEG  
Test Speed: HIGH  
Temperature:25.3℃  
Operators:  
Test Date:2025-03-17

γ Range: 0 - 180DEG  
γ Interval: 1.0DEG  
Test System:EVERFINE GO-2000B\_V1 SYSTEM V2.00.488  
Humidity:65.0%  
Test Distance:6.360m [K=1.0000]  
Remarks:

## ISOLUX DIAGRAM

Test:U:24.00V I:0.4632A P:11.12W PF:1.000 Freq:0Hz Lamp Flux:302.892x1 lm		
NAME: SF18-24V-5050-70-SPI-RGBW(2700K)-W	TYPE:	WEIGHT:
SPEC.:	DIM.: Length=1m	SERIAL No.:
MFR.: OLympia lighting	SUR.:	Shielding Angle:



C Range: 0 - 360DEG  
C Interval: 30.0DEG  
Test Speed: HIGH  
Temperature: 25.3°C  
Operators:  
Test Date: 2025-03-17

γ Range: 0 - 180DEG  
γ Interval: 1.0DEG  
Test System: EVERFINE GO-2000B\_V1 SYSTEM V2.00.488  
Humidity: 65.0%  
Test Distance: 6.360m [K=1.0000]  
Remarks:

## LED Avg.L Report

Test:U:24.00V I:0.4632A P:11.12W PF:1.000 Freq:0Hz Lamp Flux:302.892x1 lm		
NAME: SF18-24V-5050-70-SPI-RGBW(2700K)-W	TYPE:	WEIGHT:
SPEC.:	DIM.: Length=1m	SERIAL No.:
MFR.: OLympia lighting	SUR.:	Shielding Angle:

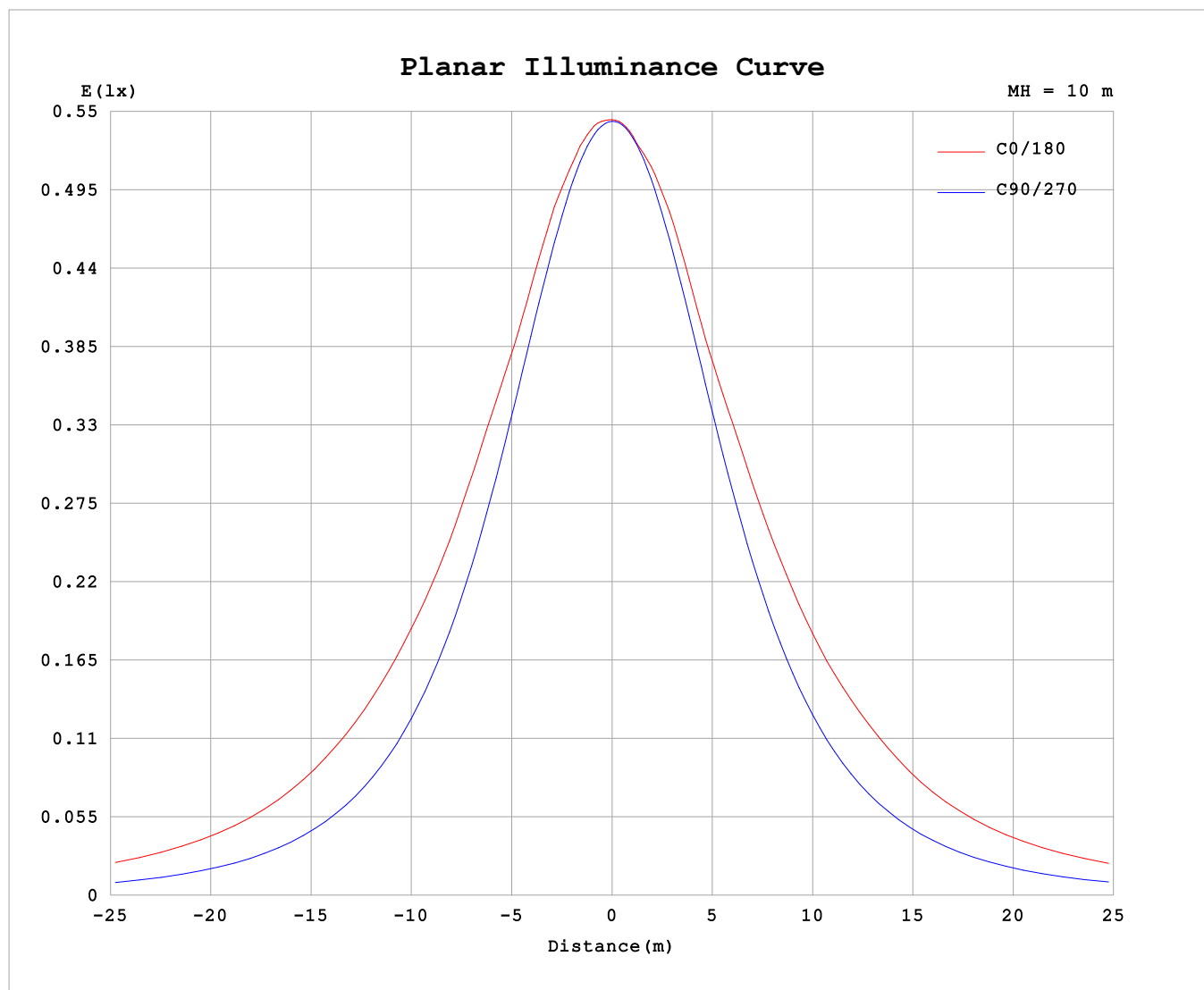
AvgL	cd/m2
L_0~180 (65) av	6467
L_0~180 (75) av	8950
L_0~180 (85) av	21524
L_90~270 (65) av	2880
L_90~270 (75) av	2863
L_90~270 (85) av	3253
L_45 (65) av	4855
L_45 (75) av	6504
L_45 (85) av	14161

Standard: GB/T 29293-2012

C Range: 0 - 360DEG  
C Interval: 30.0DEG  
Test Speed: HIGH  
Temperature:25.3℃  
Operators:  
Test Date:2025-03-17

γ Range: 0 - 180DEG  
γ Interval: 1.0DEG  
Test System:EVERFINE GO-2000B\_V1 SYSTEM V2.00.488  
Humidity:65.0%  
Test Distance:6.360m [K=1.0000]  
Remarks:

## Planar Illuminance Curve



C Range: 0 - 360DEG  
C Interval: 30.0DEG  
Test Speed: HIGH  
Temperature: 25.3 °C  
Operators:  
Test Date: 2025-03-17

$\gamma$  Range: 0 - 180DEG  
 $\gamma$  Interval: 1.0DEG  
Test System: EVERFINE GO-2000B\_V1 SYSTEM V2.00.488  
Humidity: 65.0%  
Test Distance: 6.360m [K=1.0000]  
Remarks:

## LUMINOUS DISTRIBUTION INTENSITY DATA

Test:U:24.00V I:0.4632A P:11.12W PF:1.000 Freq:0Hz Lamp Flux:302.892x1 lm																	
NAME: SF18-24V-5050-70-SPI-RGBW(2700K)-W									TYPE:			WEIGHT:					
SPEC.:									DIM.: Length=1m			SERIAL No.:					
MFR.: OLYMPIA lighting									SUR.:			Shielding Angle:					

Table--1

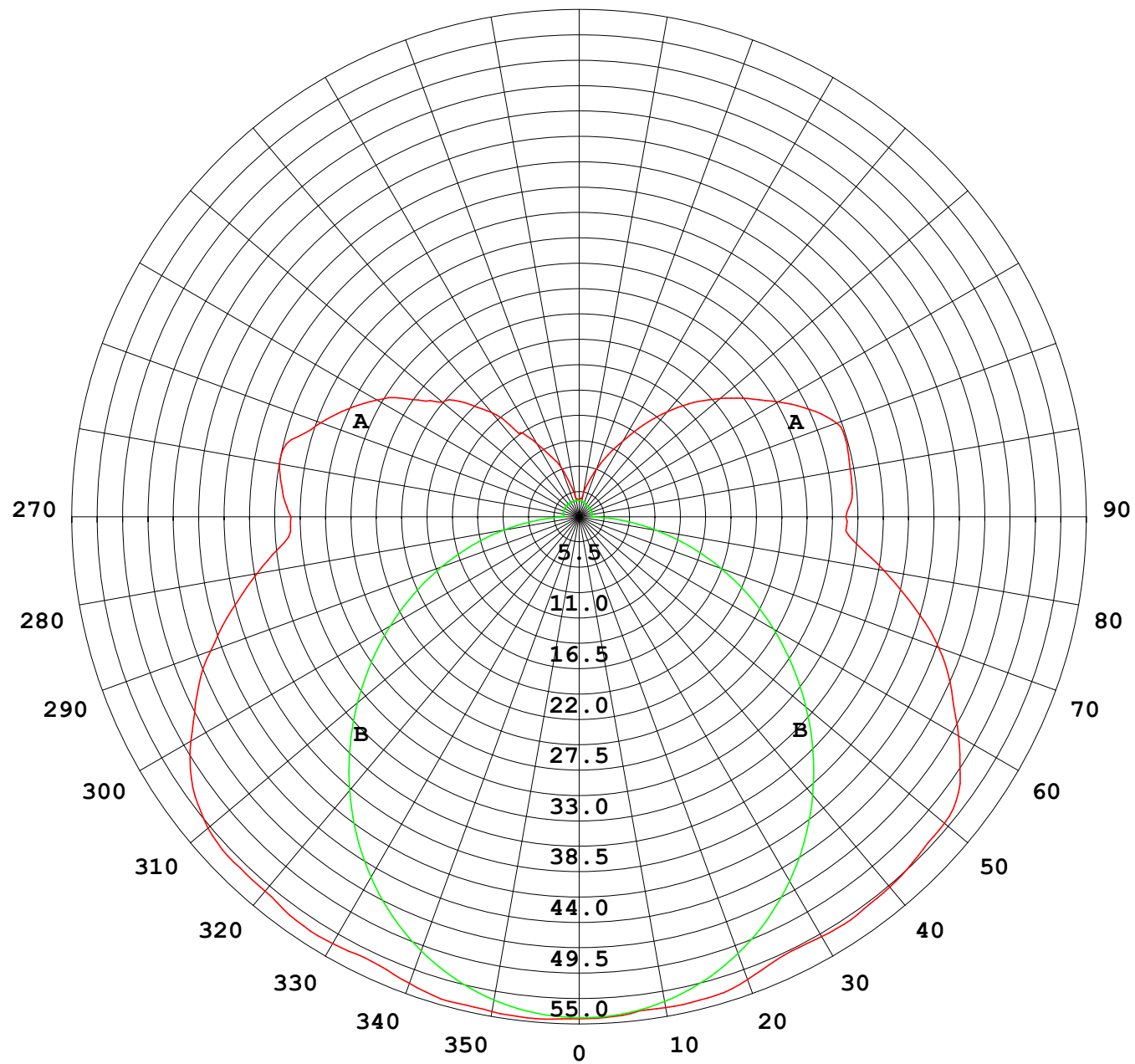
UNIT: cd

C (DEG) γ (DEG)	0	30	60	90	120	150	180	210	240	270	300	330						
0	54.4	54.4	54.4	54.4	54.4	54.4	54.4	54.4	54.4	54.4	54.4	54.4						
5	54.6	54.5	54.2	54.1	54.1	54.1	54.2	54.2	54.2	54.2	54.2	54.3	54.5					
10	54.4	54.2	53.8	53.3	53.4	53.6	54.0	53.7	53.5	53.4	53.9	54.3						
15	54.4	53.7	52.7	51.9	52.2	53.5	54.0	53.5	52.4	52.2	52.9	53.9						
20	53.8	53.2	51.2	50.1	51.1	52.9	53.3	52.9	51.3	50.4	51.6	53.3						
25	53.1	52.0	49.6	47.9	49.6	51.4	52.4	51.6	49.9	48.3	50.0	52.3						
30	53.4	50.9	47.6	45.2	47.6	50.3	52.5	50.5	48.0	45.7	48.2	51.2						
35	53.4	50.4	45.2	42.1	44.9	49.8	52.6	50.0	45.5	42.7	45.8	50.8						
40	52.9	49.4	42.5	38.8	42.1	48.9	52.4	49.1	42.6	39.4	43.2	49.8						
45	52.9	47.9	39.5	35.2	39.2	47.8	51.9	47.9	39.7	35.9	40.2	48.4						
50	52.5	47.0	36.4	31.4	36.0	46.3	51.7	46.5	36.5	32.1	37.1	47.4						
55	51.1	45.7	32.8	27.5	32.6	44.7	50.4	44.8	33.1	28.3	33.6	46.1						
60	48.6	43.4	29.7	23.7	29.4	42.8	47.5	43.0	29.9	24.4	30.5	43.8						
65	45.7	40.9	26.9	19.8	26.5	39.8	44.5	40.0	26.8	20.4	27.6	41.3						
70	42.5	38.0	24.3	15.9	23.7	36.5	41.5	36.7	24.0	16.4	25.0	38.4						
75	38.9	33.9	21.5	12.0	20.9	33.0	37.5	33.1	21.0	12.4	22.1	34.3						
80	35.4	30.2	18.1	8.26	17.6	28.8	33.5	28.9	17.8	8.56	18.5	30.5						
85	32.1	26.8	14.4	4.60	14.0	24.9	29.8	24.8	14.1	4.76	14.8	26.8						
90	31.2	25.2	11.8	1.65	11.8	23.2	28.9	22.8	11.3	1.40	11.7	25.0						
95	32.3	26.4	11.7	1.72	11.4	24.1	29.7	23.5	10.9	1.33	11.6	26.2						
100	33.0	27.3	9.85	1.76	11.0	25.5	29.8	25.0	10.6	1.39	9.96	27.0						
105	32.3	25.0	9.04	1.78	10.8	25.8	30.1	25.3	10.4	1.45	9.18	25.5						
110	29.8	23.1	6.93	1.81	10.9	24.3	29.7	23.9	10.4	1.47	8.73	23.7						
115	27.6	21.1	8.25	1.82	10.7	22.2	27.6	21.8	10.2	1.47	8.53	21.2						
120	25.3	18.4	7.10	1.83	9.85	20.1	24.9	19.7	9.43	1.48	7.86	18.9						
125	22.2	16.8	6.60	1.83	8.86	18.3	22.3	18.0	8.48	1.49	6.59	17.3						
130	19.3	14.7	5.81	1.83	7.73	16.4	20.0	16.1	7.29	1.49	6.16	15.6						
135	17.5	11.3	4.95	1.83	6.64	14.3	17.5	14.1	6.25	1.48	5.09	12.0						
140	14.7	8.97	4.24	1.83	5.64	12.1	14.9	11.9	5.31	1.47	4.21	9.49						
145	11.1	6.65	3.66	1.82	4.76	9.68	12.2	9.55	4.43	1.47	3.53	7.37						
150	9.17	5.53	3.04	1.81	3.85	7.74	9.47	7.66	3.57	1.51	2.85	5.50						
155	7.21	4.39	2.53	1.80	3.20	6.12	7.37	6.08	2.98	1.57	2.37	4.66						
160	5.68	3.29	2.23	1.79	2.73	4.62	5.48	4.53	2.56	1.62	2.13	3.33						
165	3.60	2.41	2.04	1.79	2.32	3.30	3.84	3.27	2.21	1.67	1.94	2.36						
170	2.09	2.05	1.97	1.79	2.17	2.47	2.25	2.47	2.10	1.72	1.88	2.05						
175	1.90	1.92	1.89	1.81	2.10	2.16	1.98	2.17	2.06	1.76	1.84	1.92						
180	1.83	1.84	1.83	1.81	1.83	1.83	1.83	1.86	1.83	1.80	1.81	1.84						

C Range: 0 - 360DEG  
C Interval: 30.0DEG  
Test Speed: HIGH  
Temperature:25.3℃  
Operators:  
Test Date:2025-03-17

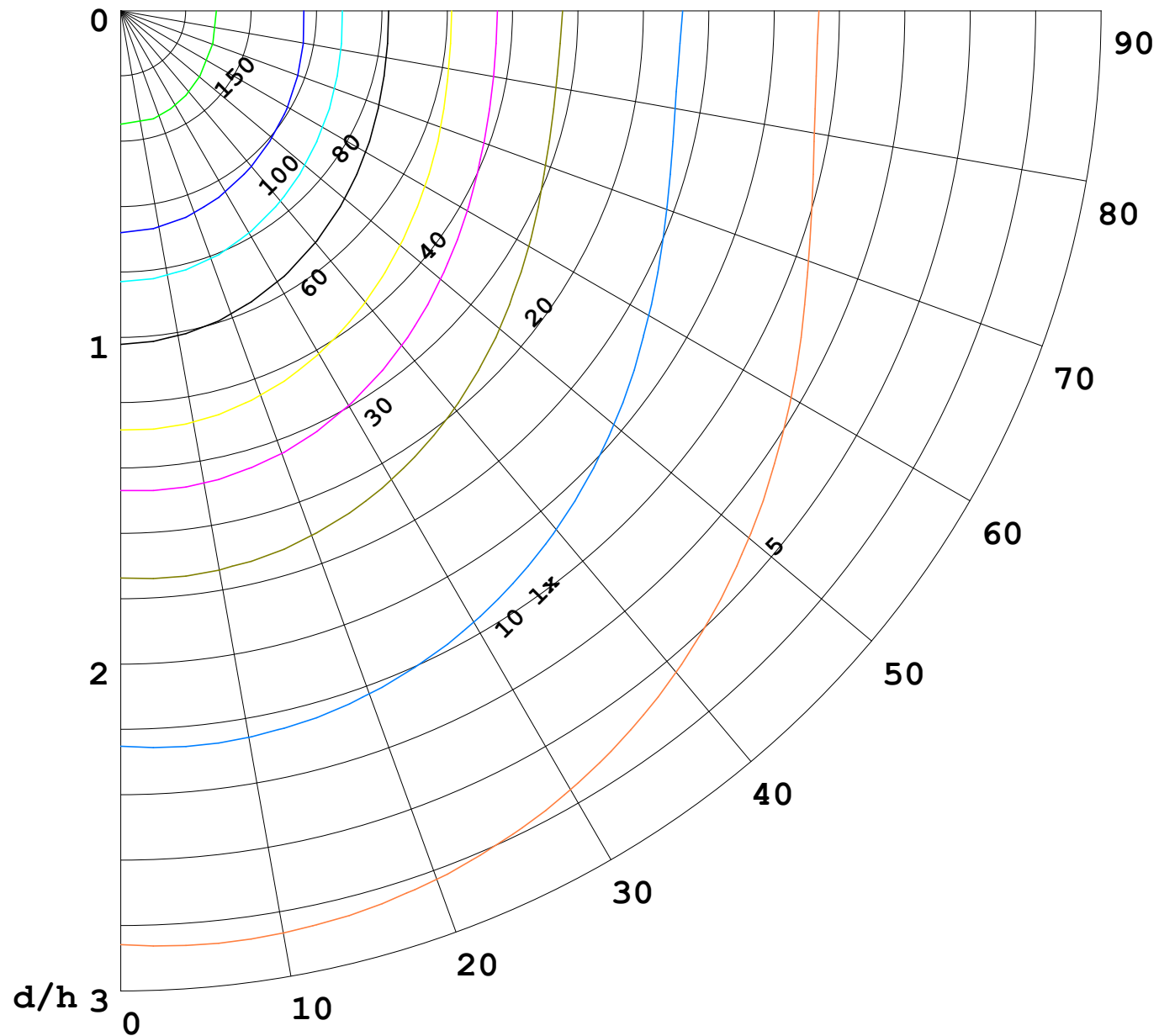
γ Range: 0 - 180DEG  
γ Interval: 1.0DEG  
Test System:EVERFINE GO-2000B\_V1 SYSTEM V2.00.488  
Humidity:65.0%  
Test Distance:6.360m [K=1.0000]  
Remarks:

I (cd)



1000 lm

$\kappa = 1$



F = 1000 lm  
 K = 0.7  
 Hcc = 0.8 m  
 Hfc = 0.0 m  
 Eave = 100 lx

	Pcc	Pw	Pfc
—————	70	50	30
—————	50	30	20

