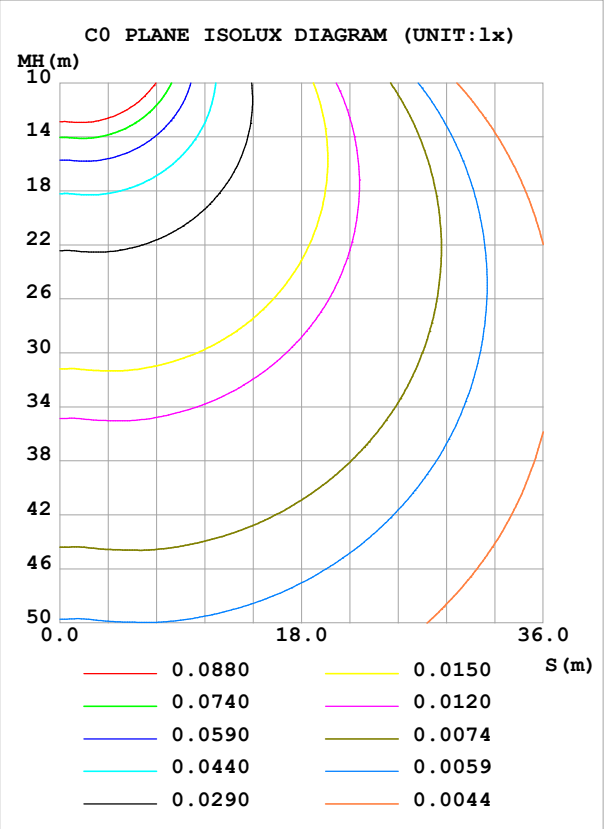
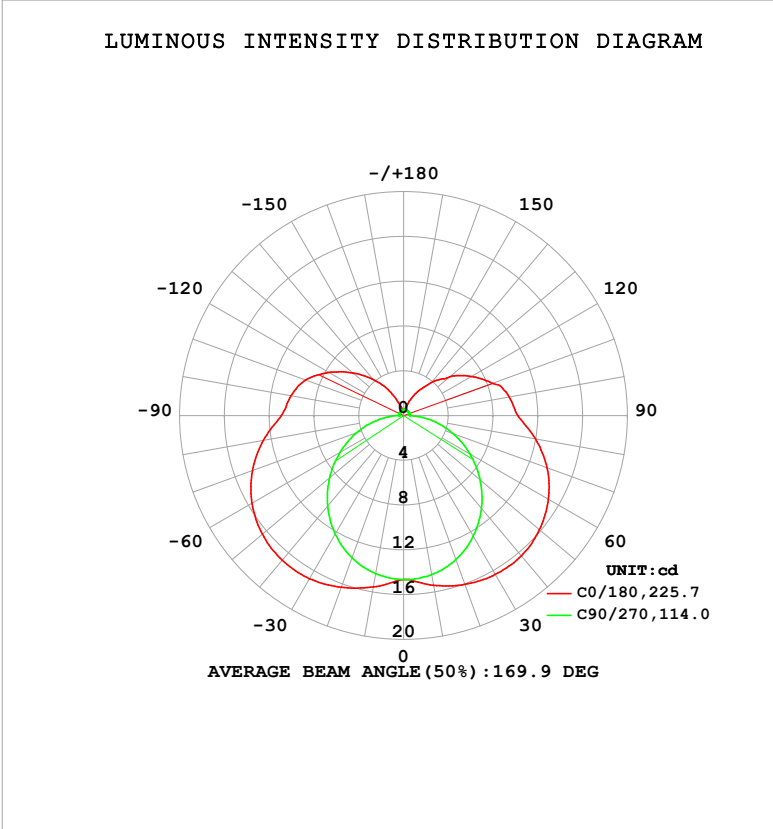


LUMINAIRE PHOTOMETRIC TEST REPORT

Test:U:24.00V I:0.2386A P:5.726W PF:1.000 Freq:0Hz Lamp Flux:96.5273x1 lm		
NAME: SF18-24V-5050-70-SPI4-RGBW(3000K)	TYPE:	WEIGHT:
SPEC.:	DIM.: Length=1m	SERIAL No.:
MFR.:	SUR.:	Shielding Angle:

DATA OF LAMP		PHOTOMETRIC DATA				Eff: 16.86 lm/W
MODEL		Imax (cd)	16.90	S/MH(C0/180)	1.73	
NOMINAL POWER(W)		LOR(%)	100.0	S/MH(C90/270)	1.24	
RATED VOLTAGE(V)		TOTAL FLUX(lm)	96.527	η UP,DN(C0-180)	12.6,37.5	
NOMINAL FLUX(lm)	96.5273	CIE CLASS	SEMI-D.	η UP,DN(C180-360)	12.6,37.3	
LAMPS INSIDE	1	η up (%)	25.2	CIBSE SHR NOM	1.50	
TEST VOLTAGE(V)		η down (%)	74.8	CIBSE SHR MAX	1.55	



C Range: 0 - 360DEG	γ Range: 0 - 180DEG
C Interval: 22.5DEG	γ Interval: 1.0DEG
Test Speed: HIGH	Test System:EVERFINE GO-2000B_V1 SYSTEM V2.00.488
Temperature:25.3℃	Humidity:65.0%
Operators:Cloud	Test Distance:6.360m [K=1.0000]
Test Date:2024-10-23	Remarks: RED

ZONAL FLUX DIAGRAM

ZONAL FLUX DIAGRAM:

γ	C0	C45	C90	C135	C180	C225	C270	C315	γ	Φ zone	Φ total	%lum, lamp
10	15.40	15.02	14.42	15.17	15.53	15.12	14.34	14.97	0- 10	1.419	1.419	1.47,1.47
20	16.04	15.22	13.68	15.42	16.31	15.30	13.51	15.08	10- 20	4.277	5.697	5.9,5.9
30	16.39	15.04	12.45	15.31	16.83	15.15	12.23	14.80	20- 30	6.939	12.64	13.1,13.1
40	16.36	14.45	10.82	14.81	16.88	14.60	10.55	14.16	30- 40	9.116	21.75	22.5,22.5
50	15.85	13.50	8.916	13.88	16.48	13.69	8.637	13.17	40- 50	10.57	32.32	33.5,33.5
60	14.94	12.20	6.844	12.60	15.64	12.44	6.557	11.89	50- 60	11.17	43.49	45.1,45.1
70	13.65	10.61	4.698	10.98	14.36	10.90	4.459	10.35	60- 70	10.89	54.39	56.3,56.3
80	11.96	8.785	2.565	9.125	12.72	9.139	2.373	8.600	70- 80	9.787	64.17	66.5,66.5
90	10.21	6.974	0.5678	7.316	10.92	7.364	0.4045	6.821	80- 90	8.022	72.19	74.8,74.8
100	9.602	6.531	0.5432	6.897	10.22	6.931	0.4046	5.737	90-100	6.675	78.87	81.7,81.7
110	8.445	5.012	0.5432	6.043	9.319	6.081	0.4247	4.806	100-110	5.915	84.78	87.8,87.8
120	7.019	3.851	0.5432	4.854	7.717	4.863	0.4508	4.016	110-120	4.621	89.40	92.6,92.6
130	5.401	2.784	0.5432	3.636	5.949	3.615	0.4710	2.864	120-130	3.288	92.69	96,96
140	3.850	1.818	0.5403	2.406	4.205	2.390	0.4941	1.827	130-140	2.060	94.75	98.2,98.2
150	2.423	1.104	0.5403	1.337	2.519	1.316	0.5172	1.056	140-150	1.084	95.84	99.3,99.3
160	1.172	0.6358	0.5403	0.6053	1.085	0.5744	0.5317	0.5901	150-160	0.4651	96.30	99.8,99.8
170	0.5650	0.5632	0.5403	0.5644	0.5592	0.5603	0.5548	0.5702	160-170	0.1725	96.47	99.9,99.9
180	0.5650	0.5632	0.5519	0.5731	0.5592	0.5603	0.5548	0.5702	170-180	0.0535	96.53	100,100
DEG	LUMINOUS INTENSITY:cd									UNIT:lm		

Conical surface Flux(90deg): 26.907 lm

%lum = 27.9%

%lamp = 27.9%

Conical surface Flux(130deg): 49.028 lm

%lum = 50.8%

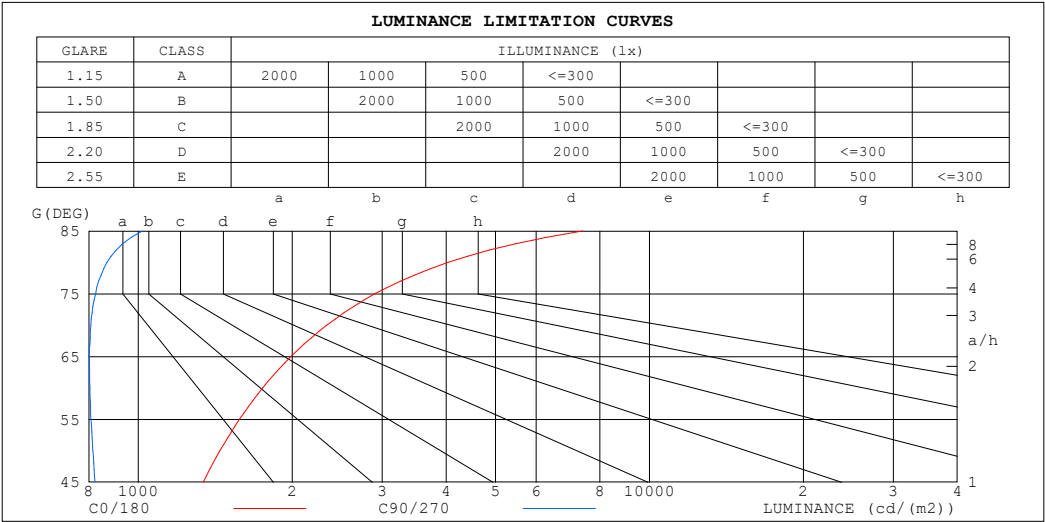
%lamp = 50.8%

C Range: 0 - 360DEG
C Interval: 22.5DEG
Test Speed: HIGH
Temperature:25.3℃
Operators:Cloud
Test Date:2024-10-23

γ Range: 0 - 180DEG
 γ Interval: 1.0DEG
Test System:EVERFINE GO-2000B_V1 SYSTEM V2.00.488
Humidity:65.0%
Test Distance:6.360m [K=1.0000]
Remarks: RED

LUMINANCE LIMITATION CURVES

Test:U:24.00V I:0.2386A P:5.726W PF:1.000 Freq:0Hz Lamp Flux:96.5273x1 lm		
NAME: SF18-24V-5050-70-SPI4-RGBW(3000K)	TYPE:	WEIGHT:
SPEC.:	DIM.: Length=1m	SERIAL No.:
MFR.:	SUR.:	Shielding Angle:



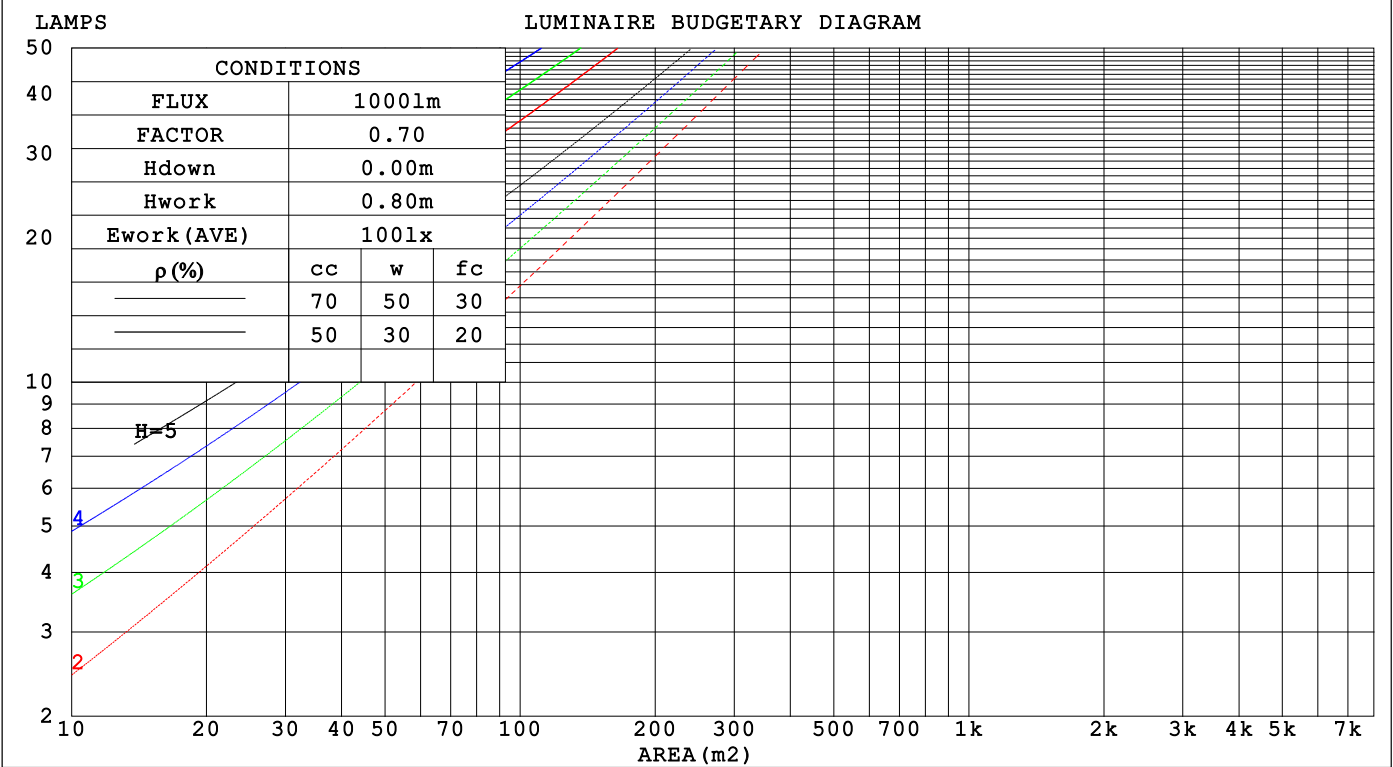
LUMINANCE cd/(m2)		
G (DEG)	C0/180	C90/270
85	7400	1019
80	4036	868
75	2903	825
70	2338	807
65	1988	802
60	1751	804
55	1577	808
50	1445	815
45	1340	822

C Range: 0 - 360DEG	γ Range: 0 - 180DEG
C Interval: 22.5DEG	γ Interval: 1.0DEG
Test Speed: HIGH	Test System:EVERFINE GO-2000B_V1 SYSTEM V2.00.488
Temperature:25.3℃	Humidity:65.0%
Operators:Cloud	Test Distance:6.360m [K=1.0000]
Test Date:2024-10-23	Remarks: RED

CU AND LUMINAIRE BUDGETARY ESTIMATE DIAGRAM

Test:U:24.00V I:0.2386A P:5.726W PF:1.000 Freq:0Hz		
Lamp Flux:96.5273x1 lm		
NAME: SF18-24V-5050-70-SPI4-RGBW(3000K)	TYPE:	WEIGHT:
SPEC.:	DIM.: Length=1m	SERIAL No.:
MFR.:	SUR.:	Shielding Angle:

pcc	80%			70%			50%			30%			10%			0
pw	50%	30%	10%	50%	30%	10%	50%	30%	10%	50%	30%	10%	50%	30%	10%	0
pfc	20%			20%			20%			20%			20%			0
RCR	RCR:Room Cavity Ratio			Coefficients of Utilization(CU)												
0.0	1.13	1.13	1.13	1.07	1.07	1.07	.97	.97	.97	.88	.88	.88	.79	.79	.79	.75
1.0	.93	.88	.82	.88	.83	.79	.79	.75	.72	.71	.68	.65	.63	.61	.59	.55
2.0	.79	.71	.64	.75	.68	.61	.67	.61	.56	.60	.55	.51	.53	.50	.46	.43
3.0	.68	.59	.52	.65	.56	.49	.58	.51	.45	.52	.46	.41	.46	.41	.38	.34
4.0	.60	.50	.43	.57	.48	.41	.51	.43	.38	.45	.39	.34	.40	.35	.31	.28
5.0	.53	.43	.36	.50	.41	.34	.45	.38	.32	.40	.34	.29	.36	.31	.27	.24
6.0	.47	.37	.31	.45	.36	.30	.40	.33	.27	.36	.30	.25	.32	.27	.23	.20
7.0	.42	.33	.27	.40	.32	.26	.36	.29	.24	.33	.27	.22	.29	.24	.20	.18
8.0	.38	.29	.23	.36	.28	.23	.33	.26	.21	.30	.24	.19	.27	.22	.18	.15
9.0	.35	.26	.21	.33	.25	.20	.30	.23	.19	.27	.21	.17	.25	.20	.16	.14
10.0	.32	.24	.19	.31	.23	.18	.28	.21	.17	.25	.19	.15	.23	.18	.14	.12



C Range: 0 - 360DEG
C Interval: 22.5DEG
Test Speed: HIGH
Temperature:25.3℃
Operators:Cloud
Test Date:2024-10-23

γ Range: 0 - 180DEG
γ Interval: 1.0DEG
Test System:EVERFINE GO-2000B_V1 SYSTEM V2.00.488
Humidity:65.0%
Test Distance:6.360m [K=1.0000]
Remarks: RED

WEC AND CCEC

Test:U:24.00V I:0.2386A P:5.726W PF:1.000 Freq:0Hz Lamp Flux:96.5273x1 lm					
NAME: SF18-24V-5050-70-SPI4-RGBW(3000K)			TYPE:		WEIGHT:
SPEC.:			DIM.: Length=1m		SERIAL No.:
MFR.:			SUR.:		Shielding Angle:

pcc	80%			70%			50%			30%			10%			0														
pw	50%	30%	10%	50%	30%	10%	50%	30%	10%	50%	30%	10%	50%	30%	10%	0														
pfc	20%			20%			20%			20%			20%			0														
RCR	RCR:Room Cavity Ratio															Wall Exitance Coefficients(WEC)														
0.0																														
1.0	.401	.228	.072	.386	.220	.070	.358	.205	.066	.332	.192	.061	.308	.179	.058															
2.0	.343	.188	.058	.329	.181	.056	.304	.169	.053	.281	.157	.049	.259	.146	.046															
3.0	.303	.161	.048	.290	.155	.047	.267	.145	.044	.246	.135	.041	.226	.125	.039															
4.0	.271	.141	.041	.260	.136	.040	.239	.127	.038	.219	.118	.036	.201	.109	.033															
5.0	.246	.125	.036	.235	.121	.035	.216	.113	.033	.198	.105	.031	.182	.097	.029															
6.0	.224	.112	.032	.215	.109	.031	.198	.101	.029	.181	.094	.028	.166	.087	.026															
7.0	.206	.102	.029	.198	.099	.028	.182	.092	.026	.167	.086	.025	.153	.079	.023															
8.0	.191	.093	.026	.183	.090	.026	.169	.084	.024	.155	.078	.023	.141	.073	.021															
9.0	.178	.086	.024	.171	.083	.023	.157	.078	.022	.144	.072	.021	.132	.067	.019															
10.0	.166	.080	.022	.160	.077	.022	.147	.072	.020	.135	.067	.019	.123	.062	.018															

pcc	80%			70%			50%			30%			10%			0
pw	50%	30%	10%	50%	30%	10%	50%	30%	10%	50%	30%	10%	50%	30%	10%	0
pfc	20%			20%			20%			20%			20%			0
RCR	RCR:Room Cavity Ratio						Ceiling Cavity Exitance Coefficients (CCEC)									
0.0	.383	.383	.383	.327	.327	.327	.223	.223	.223	.128	.128	.128	.041	.041	.041	
1.0	.380	.349	.321	.325	.300	.276	.223	.206	.191	.128	.119	.111	.041	.038	.036	
2.0	.374	.327	.287	.320	.281	.248	.220	.195	.173	.127	.113	.101	.041	.037	.033	
3.0	.367	.311	.266	.314	.268	.230	.216	.186	.162	.125	.109	.095	.040	.035	.031	
4.0	.359	.298	.252	.308	.258	.219	.212	.180	.154	.123	.105	.091	.039	.034	.030	
5.0	.351	.289	.242	.302	.250	.211	.208	.175	.149	.120	.102	.088	.039	.033	.029	
6.0	.344	.281	.236	.296	.243	.205	.204	.170	.145	.118	.100	.086	.038	.033	.029	
7.0	.337	.275	.231	.290	.238	.201	.200	.167	.143	.116	.098	.085	.038	.032	.028	
8.0	.330	.269	.227	.284	.233	.198	.197	.164	.140	.114	.097	.084	.037	.032	.028	
9.0	.324	.264	.224	.279	.229	.195	.193	.161	.139	.113	.095	.083	.036	.031	.027	
10.0	.318	.260	.222	.274	.226	.194	.190	.159	.137	.111	.094	.082	.036	.031	.027	

C Range: 0 - 360DEG
C Interval: 22.5DEG
Test Speed: HIGH
Temperature:25.3℃
Operators:Cloud
Test Date:2024-10-23

γ Range: 0 - 180DEG
γ Interval: 1.0DEG
Test System:EVERFINE GO-2000B_V1 SYSTEM V2.00.488
Humidity:65.0%
Test Distance:6.360m [K=1.0000]
Remarks: RED

UGR(Unified Glare Rating) Table

Test:U:24.00V I:0.2386A P:5.726W PF:1.000 Freq:0Hz Lamp Flux:96.5273x1 lm											
NAME: SF18-24V-5050-70-SPI4-RGBW(3000K)						TYPE:		WEIGHT:			
SPEC.:						DIM.: Length=1m		SERIAL No.:			
MFR.:						SUR.:		Shielding Angle:			
ceiling/cavity		0.7	0.7	0.5	0.5	0.3	0.7	0.7	0.5	0.5	0.3
walls		0.5	0.3	0.5	0.3	0.3	0.5	0.3	0.5	0.3	0.3
working plane		0.2	0.2	0.2	0.2	0.2	0.2	0.2	0.2	0.2	0.2
Room dimensions		Viewed crosswise					Viewed endwise				
x = 2H y = 2H	2H	21.7	23.0	22.2	23.6	24.3	18.7	20.1	19.3	20.7	21.4
	3H	24.5	25.8	25.2	26.4	27.1	20.5	21.7	21.1	22.3	23.1
	4H	26.1	27.3	26.8	27.9	28.7	21.3	22.4	21.9	23.1	23.8
	6H	27.8	28.9	28.5	29.6	30.4	21.9	23.0	22.6	23.7	24.5
	8H	28.8	29.8	29.4	30.5	31.3	22.2	23.3	22.9	24.0	24.8
	12H	29.8	30.9	30.5	31.5	32.4	22.5	23.5	23.1	24.2	25.0
4H	2H	22.2	23.4	22.9	24.0	24.8	20.2	21.4	20.9	22.1	22.8
	3H	25.4	26.4	26.0	27.1	27.9	22.3	23.3	22.9	24.0	24.8
	4H	27.1	28.0	27.8	28.8	29.6	23.2	24.2	23.9	24.9	25.7
	6H	29.1	29.9	29.8	30.6	31.5	24.1	24.9	24.8	25.7	26.6
	8H	30.1	30.9	30.9	31.6	32.5	24.5	25.3	25.2	26.0	26.9
	12H	31.3	32.0	32.1	32.8	33.7	24.8	25.5	25.6	26.3	27.2
8H	4H	27.5	28.3	28.2	29.0	29.9	24.5	25.3	25.3	26.0	26.9
	6H	29.7	30.4	30.5	31.2	32.1	25.8	26.4	26.6	27.2	28.2
	8H	31.0	31.6	31.8	32.4	33.3	26.4	27.0	27.2	27.8	28.7
	12H	32.5	33.0	33.3	33.8	34.8	26.9	27.4	27.7	28.3	29.2
12H	4H	27.5	28.2	28.3	29.0	29.9	24.9	25.6	25.7	26.4	27.3
	6H	29.8	30.4	30.6	31.2	32.2	26.4	27.0	27.2	27.8	28.8
	8H	31.2	31.8	32.0	32.6	33.5	27.2	27.7	28.0	28.5	29.5
Variations with the observer position at spacings(CIE Pub.117):											
S = 1.0H		+ 0.1 / - 0.1					+ 0.1 / - 0.1				
1.5H		+ 0.2 / - 0.3					+ 0.2 / - 0.3				
2.0H		+ 0.3 / - 0.4					+ 0.3 / - 0.5				

CIE Pub.117, 96.53 lm Total Lamp Luminous Flux Correct (8log(F/F0) = -8.1)
Area: 0.017 m2

C Range: 0 - 360DEG
C Interval: 22.5DEG
Test Speed: HIGH
Temperature:25.3℃
Operators:Cloud
Test Date:2024-10-23

γ Range: 0 - 180DEG
γ Interval: 1.0DEG
Test System:EVERFINE GO-2000B_V1 SYSTEM V2.00.488
Humidity:65.0%
Test Distance:6.360m [K=1.0000]
Remarks: RED

UTILIZATION FACTORS TABLE

Test:U:24.00V I:0.2386A P:5.726W PF:1.000 Freq:0Hz Lamp Flux:96.5273x1 lm		
NAME: SF18-24V-5050-70-SPI4-RGBW(3000K)	TYPE:	WEIGHT:
SPEC.:	DIM.: Length=1m	SERIAL No.:
MFR.:	SUR.:	Shielding Angle:

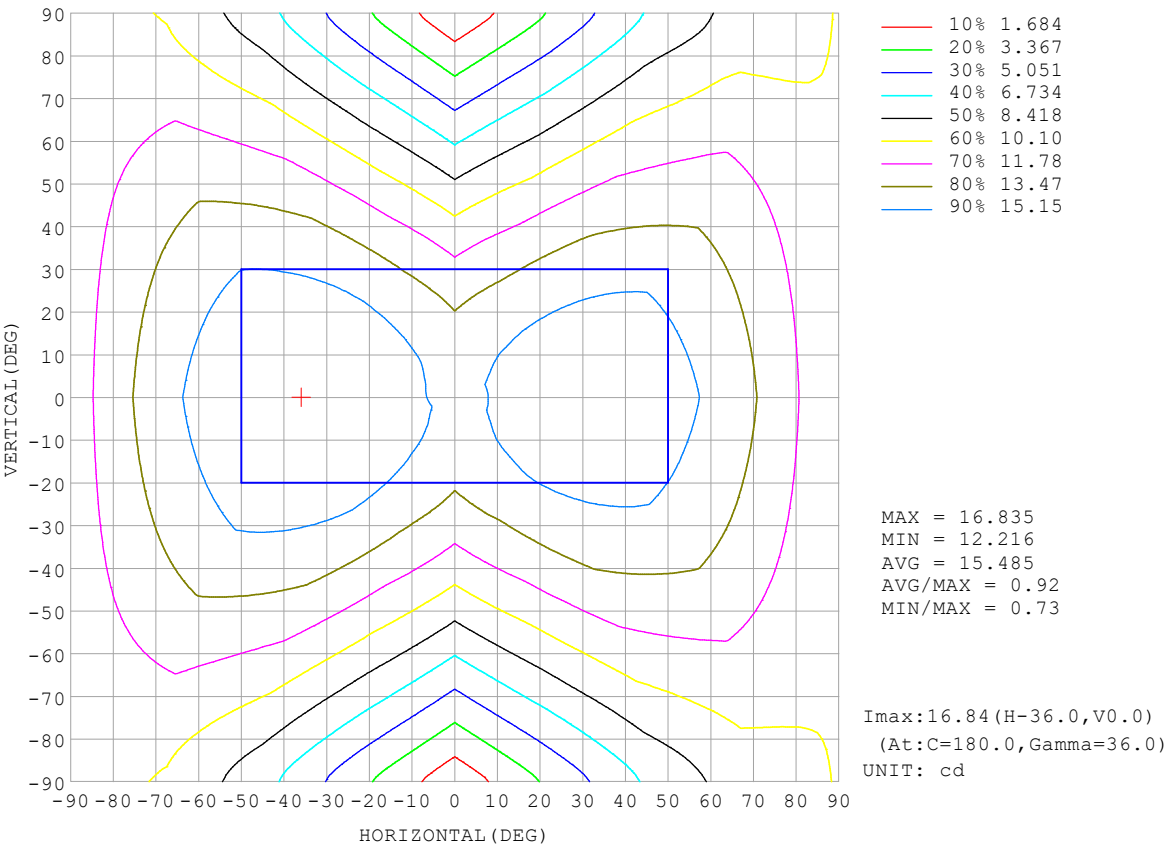
REFLECTANCE										
Ceiling	0.8	0.8	0.8	0.7	0.7	0.7	0.5	0.5	0.5	0
Walls	0.7	0.5	0.3	0.7	0.5	0.3	0.7	0.5	0.3	0
Working plane	0.2	0.2	0.2	0.2	0.2	0.2	0.2	0.2	0.2	0
ROOM INDEX	UTILIZATION FACTORS (PERCENT) $k(RI) \times RCR = 5$									
$k = 0.60$	44	31	24	43	31	24	40	30	23	16
0.80	53	39	31	51	39	31	48	37	30	21
1.00	61	47	38	58	46	38	54	46	36	27
1.25	67	54	45	65	53	44	60	50	42	32
1.50	73	60	51	70	58	49	64	54	47	35
2.00	80	68	60	77	66	58	70	61	54	41
2.50	85	74	66	81	71	63	74	66	59	45
3.00	89	79	71	85	76	68	77	70	64	48
4.00	94	85	78	89	82	75	81	75	70	53
5.00	97	90	83	92	86	80	84	78	74	56
ROOM INDEX	UF (total)									Direct
According to DIN EN 13032-2 2004			Suspended					SHRNOM = 1.25		

C Range: 0 - 360DEG
 C Interval: 22.5DEG
 Test Speed: HIGH
 Temperature: 25.3°C
 Operators: Cloud
 Test Date: 2024-10-23

γ Range: 0 - 180DEG
 γ Interval: 1.0DEG
 Test System: EVERFINE GO-2000B_V1 SYSTEM V2.00.488
 Humidity: 65.0%
 Test Distance: 6.360m [K=1.0000]
 Remarks: RED

ISOCANDELA DIAGRAM

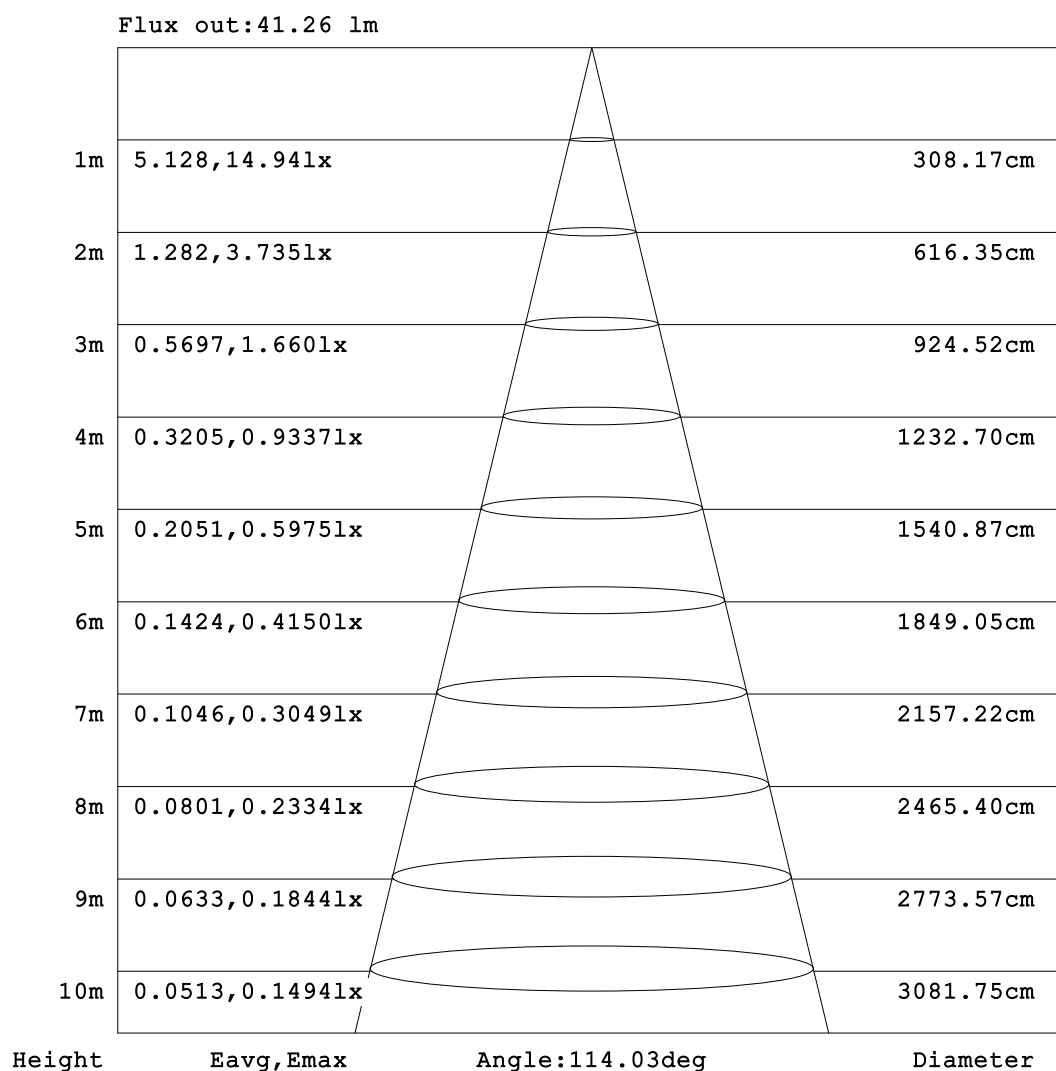
Test:U:24.00V I:0.2386A P:5.726W PF:1.000 Freq:0Hz Lamp Flux:96.5273x1 lm		
NAME: SF18-24V-5050-70-SPI4-RGBW(3000K)	TYPE:	WEIGHT:
SPEC.:	DIM.: Length=1m	SERIAL No.:
MFR.:	SUR.:	Shielding Angle:



C Range: 0 - 360DEG	γ Range: 0 - 180DEG
C Interval: 22.5DEG	γ Interval: 1.0DEG
Test Speed: HIGH	Test System:EVERFINE GO-2000B_V1 SYSTEM V2.00.488
Temperature:25.3℃	Humidity:65.0%
Operators:Cloud	Test Distance:6.360m [K=1.0000]
Test Date:2024-10-23	Remarks: RED

AAI Figure

Test:U:24.00V I:0.2386A P:5.726W PF:1.000 Freq:0Hz Lamp Flux:96.5273x1 lm		
NAME: SF18-24V-5050-70-SPI4-RGBW(3000K)	TYPE:	WEIGHT:
SPEC.:	DIM.: Length=1m	SERIAL No.:
MFR.:	SUR.:	Shielding Angle:



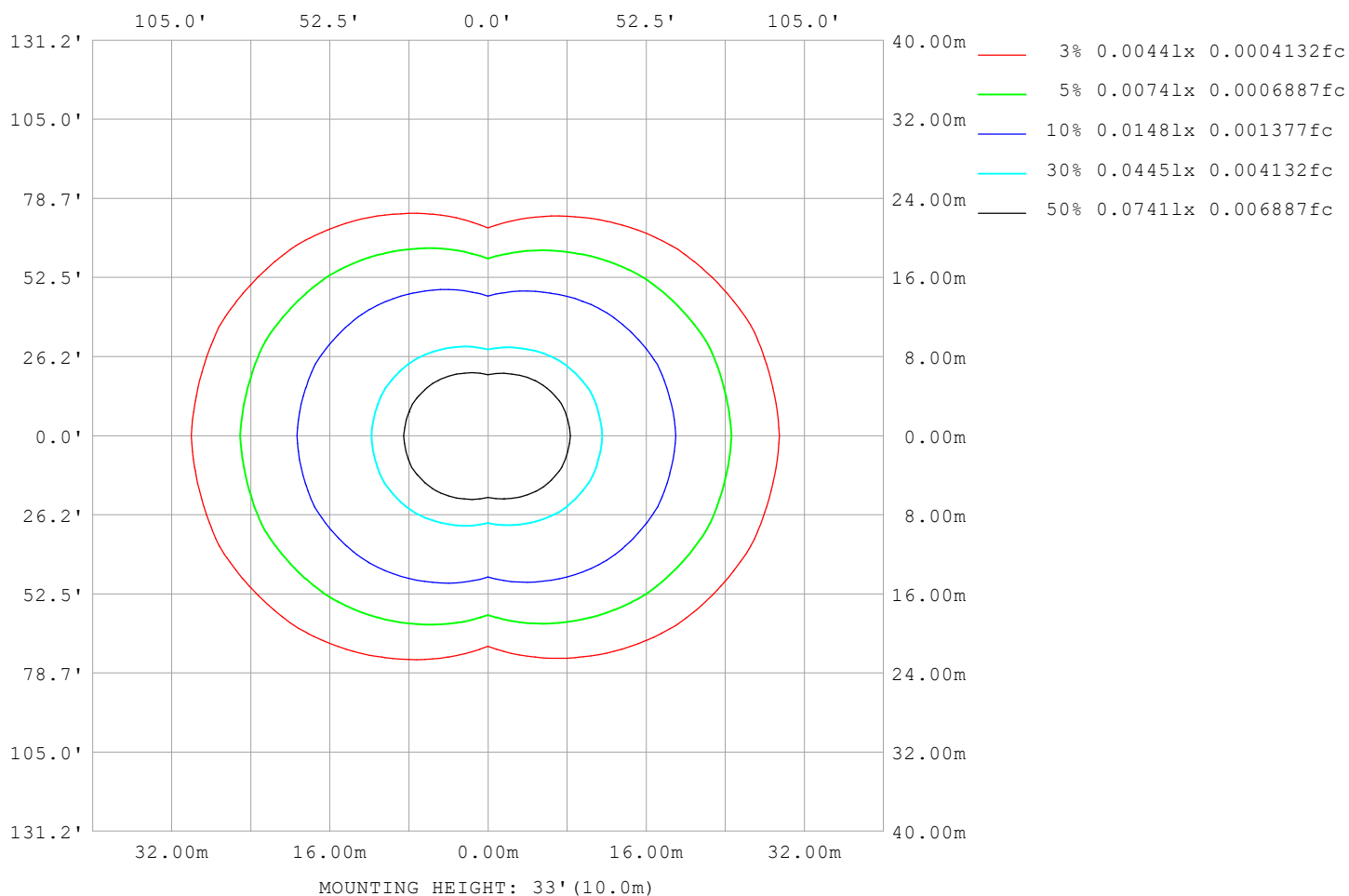
Note:The Curves indicate the illuminated area and the average illumination when the luminaire is at different distance.

C Range: 0 - 360DEG
C Interval: 22.5DEG
Test Speed: HIGH
Temperature:25.3℃
Operators:Cloud
Test Date:2024-10-23

γ Range: 0 - 180DEG
γ Interval: 1.0DEG
Test System:EVERFINE GO-2000B_V1 SYSTEM V2.00.488
Humidity:65.0%
Test Distance:6.360m [K=1.0000]
Remarks: RED

ISOLUX DIAGRAM

Test:U:24.00V I:0.2386A P:5.726W PF:1.000 Freq:0Hz Lamp Flux:96.5273x1 lm		
NAME: SF18-24V-5050-70-SPI4-RGBW(3000K)	TYPE:	WEIGHT:
SPEC.:	DIM.: Length=1m	SERIAL No.:
MFR.:	SUR.:	Shielding Angle:



C Range: 0 - 360DEG
C Interval: 22.5DEG
Test Speed: HIGH
Temperature:25.3℃
Operators:Cloud
Test Date:2024-10-23

γ Range: 0 - 180DEG
γ Interval: 1.0DEG
Test System:EVERFINE GO-2000B_V1 SYSTEM V2.00.488
Humidity:65.0%
Test Distance:6.360m [K=1.0000]
Remarks: RED

LED Avg.L Report

Test:U:24.00V I:0.2386A P:5.726W PF:1.000 Freq:0Hz Lamp Flux:96.5273x1 lm		
NAME: SF18-24V-5050-70-SPI4-RGBW(3000K)	TYPE:	WEIGHT:
SPEC.:	DIM.: Length=1m	SERIAL No.:
MFR.:	SUR.:	Shielding Angle:

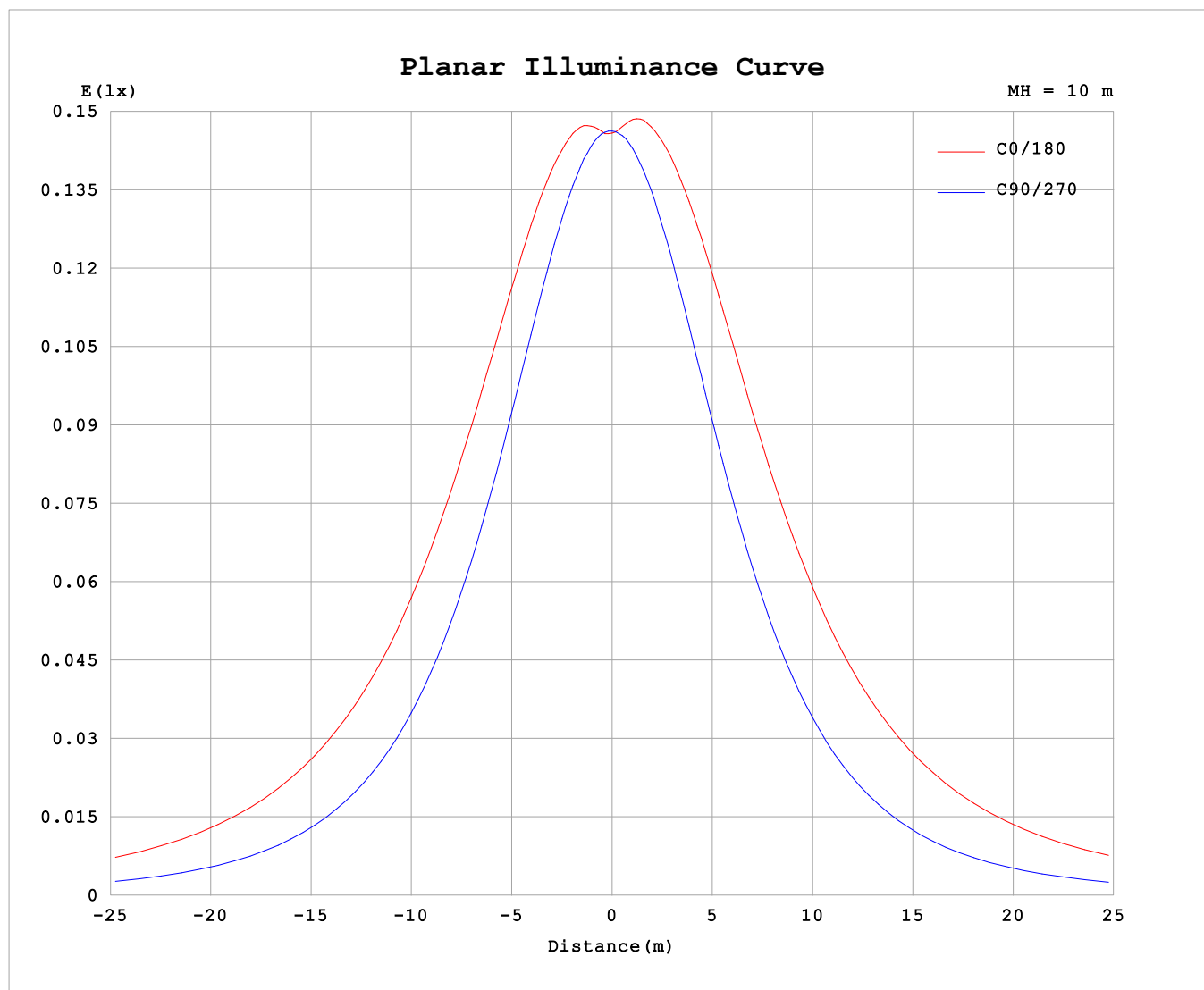
AvgL	cd/m2
L_0~180 (65) av	2046
L_0~180 (75) av	3001
L_0~180 (85) av	7687
L_90~270 (65) av	785
L_90~270 (75) av	801
L_90~270 (85) av	959
L_45 (65) av	1604
L_45 (75) av	2236
L_45 (85) av	5362

Standard: GB/T 29293-2012

C Range: 0 - 360DEG
C Interval: 22.5DEG
Test Speed: HIGH
Temperature:25.3℃
Operators:Cloud
Test Date:2024-10-23

γ Range: 0 - 180DEG
γ Interval: 1.0DEG
Test System:EVERFINE GO-2000B_V1 SYSTEM V2.00.488
Humidity:65.0%
Test Distance:6.360m [K=1.0000]
Remarks: RED

Planar Illuminance Curve



C Range: 0 - 360DEG
C Interval: 22.5DEG
Test Speed: HIGH
Temperature: 25.3°C
Operators: Cloud
Test Date: 2024-10-23

γ Range: 0 - 180DEG
 γ Interval: 1.0DEG
Test System: EVERFINE GO-2000B_V1 SYSTEM V2.00.488
Humidity: 65.0%
Test Distance: 6.360m [K=1.0000]
Remarks: RED

LUMINOUS DISTRIBUTION INTENSITY DATA

Test:U:24.00V I:0.2386A P:5.726W PF:1.000 Freq:0Hz Lamp Flux:96.5273x1 lm																	
NAME: SF18-24V-5050-70-SPI4-RGBW(3000K)									TYPE:						WEIGHT:		
SPEC.:									DIM.: Length=1m						SERIAL No.:		
MFR.:									SUR.:						Shielding Angle:		

Table--1

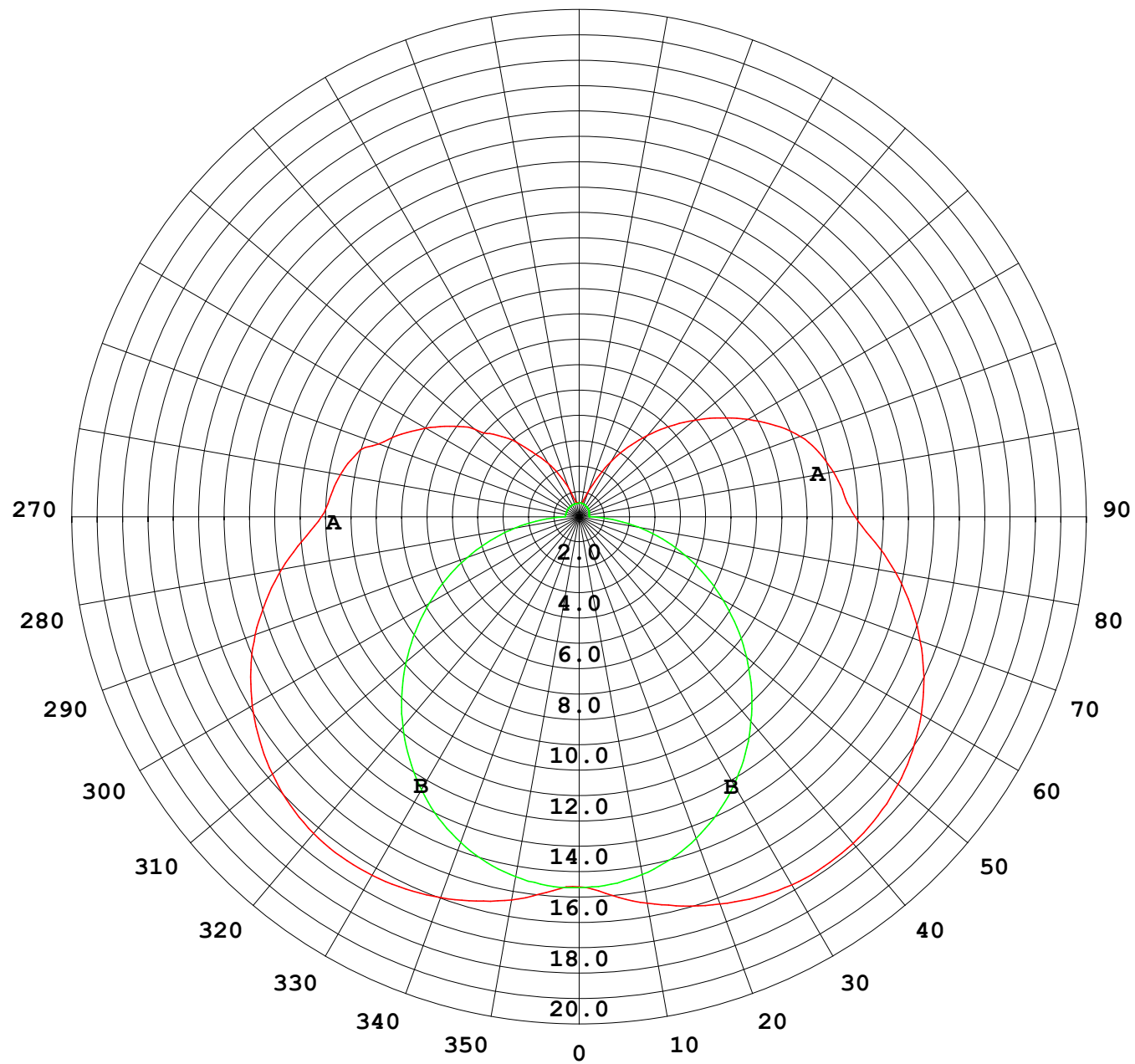
UNIT: cd

γ (DEG) \ C (DEG)	C (DEG)																			
	0	22.5	45	67.5	90	112.5	135	157.5	180	202.5	225	247.5	270	292.5	315	337.5				
0	14.6	14.6	14.6	14.6	14.6	14.6	14.6	14.6	14.6	14.6	14.6	14.6	14.6	14.6	14.6	14.6				
5	14.9	14.9	14.8	14.6	14.6	14.7	14.9	15.0	15.0	15.0	14.9	14.7	14.6	14.6	14.7	14.9				
10	15.4	15.3	15.0	14.6	14.4	14.7	15.2	15.5	15.5	15.4	15.1	14.7	14.3	14.5	15.0	15.2				
15	15.7	15.6	15.2	14.5	14.1	14.7	15.3	15.8	16.0	15.7	15.3	14.6	14.0	14.4	15.1	15.5				
20	16.0	15.9	15.2	14.4	13.7	14.5	15.4	16.1	16.3	16.0	15.3	14.4	13.5	14.2	15.1	15.7				
25	16.3	16.0	15.2	14.1	13.1	14.2	15.4	16.3	16.6	16.2	15.3	14.0	12.9	13.8	15.0	15.9				
30	16.4	16.0	15.0	13.6	12.4	13.7	15.3	16.4	16.8	16.3	15.1	13.6	12.2	13.4	14.8	15.9				
35	16.4	16.0	14.8	13.1	11.7	13.2	15.1	16.4	16.9	16.4	14.9	13.1	11.4	12.8	14.5	15.9				
40	16.4	15.9	14.4	12.5	10.8	12.6	14.8	16.3	16.9	16.3	14.6	12.4	10.5	12.1	14.2	15.7				
45	16.2	15.6	14.0	11.8	9.90	11.9	14.4	16.1	16.7	16.1	14.2	11.8	9.63	11.4	13.7	15.4				
50	15.8	15.2	13.5	11.0	8.92	11.2	13.9	15.8	16.5	15.7	13.7	11.0	8.64	10.7	13.2	15.1				
55	15.4	14.8	12.9	10.2	7.89	10.4	13.3	15.4	16.1	15.3	13.1	10.2	7.61	9.84	12.6	14.6				
60	14.9	14.2	12.2	9.40	6.84	9.55	12.6	14.8	15.6	14.8	12.4	9.39	6.56	9.00	11.9	14.1				
65	14.3	13.6	11.4	8.51	5.77	8.65	11.8	14.2	15.1	14.1	11.7	8.50	5.51	8.13	11.2	13.4				
70	13.6	12.8	10.6	7.58	4.70	7.71	11.0	13.4	14.4	13.4	10.9	7.60	4.46	7.22	10.3	12.7				
75	12.8	12.0	9.73	6.61	3.63	6.74	10.1	12.6	13.6	12.6	10.0	6.64	3.42	6.28	9.51	11.9				
80	12.0	11.1	8.79	5.62	2.57	5.74	9.13	11.7	12.7	11.8	9.14	5.67	2.37	5.33	8.60	11.1				
85	11.0	10.1	7.81	4.63	1.51	4.72	8.13	10.7	11.8	10.8	8.19	4.69	1.33	4.35	7.65	9.94				
90	10.2	9.32	6.97	3.75	0.57	3.84	7.32	9.88	10.9	10.00	7.36	3.87	0.40	3.53	6.82	9.07				
95	9.86	8.99	6.74	3.64	0.55	3.72	7.09	9.56	10.5	9.66	7.12	3.75	0.40	2.41	5.11	6.90				
100	9.60	8.77	6.53	3.00	0.54	3.53	6.90	9.29	10.2	9.40	6.93	3.56	0.40	2.56	5.74	8.20				
105	9.22	8.33	5.74	2.48	0.54	3.17	6.58	8.94	9.84	9.02	6.62	3.20	0.42	2.22	5.46	8.06				
110	8.45	7.47	5.01	2.18	0.54	2.80	6.04	8.42	9.32	8.51	6.08	2.83	0.42	2.04	4.81	7.10				
115	7.75	6.80	4.41	1.92	0.54	2.43	5.45	7.69	8.57	7.77	5.47	2.45	0.44	1.92	4.47	6.24				
120	7.02	6.03	3.85	1.70	0.54	2.07	4.85	6.90	7.72	6.97	4.86	2.07	0.45	1.71	4.02	5.97				
125	6.25	5.31	3.30	1.48	0.54	1.67	4.24	6.12	6.83	6.15	4.24	1.67	0.47	1.40	3.45	5.33				
130	5.40	4.59	2.78	1.20	0.54	1.33	3.64	5.31	5.95	5.33	3.61	1.33	0.47	1.12	2.86	4.65				
135	4.57	3.95	2.27	0.97	0.54	1.03	3.03	4.50	5.08	4.52	3.01	1.04	0.48	0.90	2.32	4.07				
140	3.85	3.28	1.82	0.78	0.54	0.79	2.41	3.71	4.20	3.73	2.39	0.80	0.49	0.73	1.83	3.37				
145	3.04	2.34	1.45	0.64	0.54	0.58	1.83	2.94	3.37	2.97	1.80	0.60	0.50	0.59	1.40	2.48				
150	2.42	1.73	1.10	0.55	0.54	0.55	1.34	2.16	2.52	2.17	1.32	0.51	0.52	0.53	1.06	1.78				
155	1.79	1.19	0.83	0.55	0.54	0.55	0.93	1.51	1.69	1.52	0.89	0.51	0.53	0.53	0.78	1.26				
160	1.17	0.84	0.64	0.55	0.54	0.55	0.61	0.96	1.09	0.98	0.57	0.51	0.53	0.53	0.59	0.86				
165	0.72	0.60	0.56	0.55	0.54	0.56	0.56	0.58	0.64	0.58	0.55	0.52	0.55	0.54	0.57	0.61				
170	0.56	0.56	0.56	0.55	0.54	0.56	0.56	0.58	0.56	0.56	0.56	0.53	0.55	0.54	0.57	0.57				
175	0.56	0.56	0.56	0.56	0.55	0.56	0.57	0.58	0.56	0.56	0.56	0.55	0.55	0.55	0.57	0.58				
180	0.56	0.56	0.56	0.56	0.55	0.56	0.57	0.58	0.56	0.56	0.56	0.55	0.55	0.56	0.57	0.59				

C Range: 0 - 360DEG
C Interval: 22.5DEG
Test Speed: HIGH
Temperature:25.3℃
Operators:Cloud
Test Date:2024-10-23

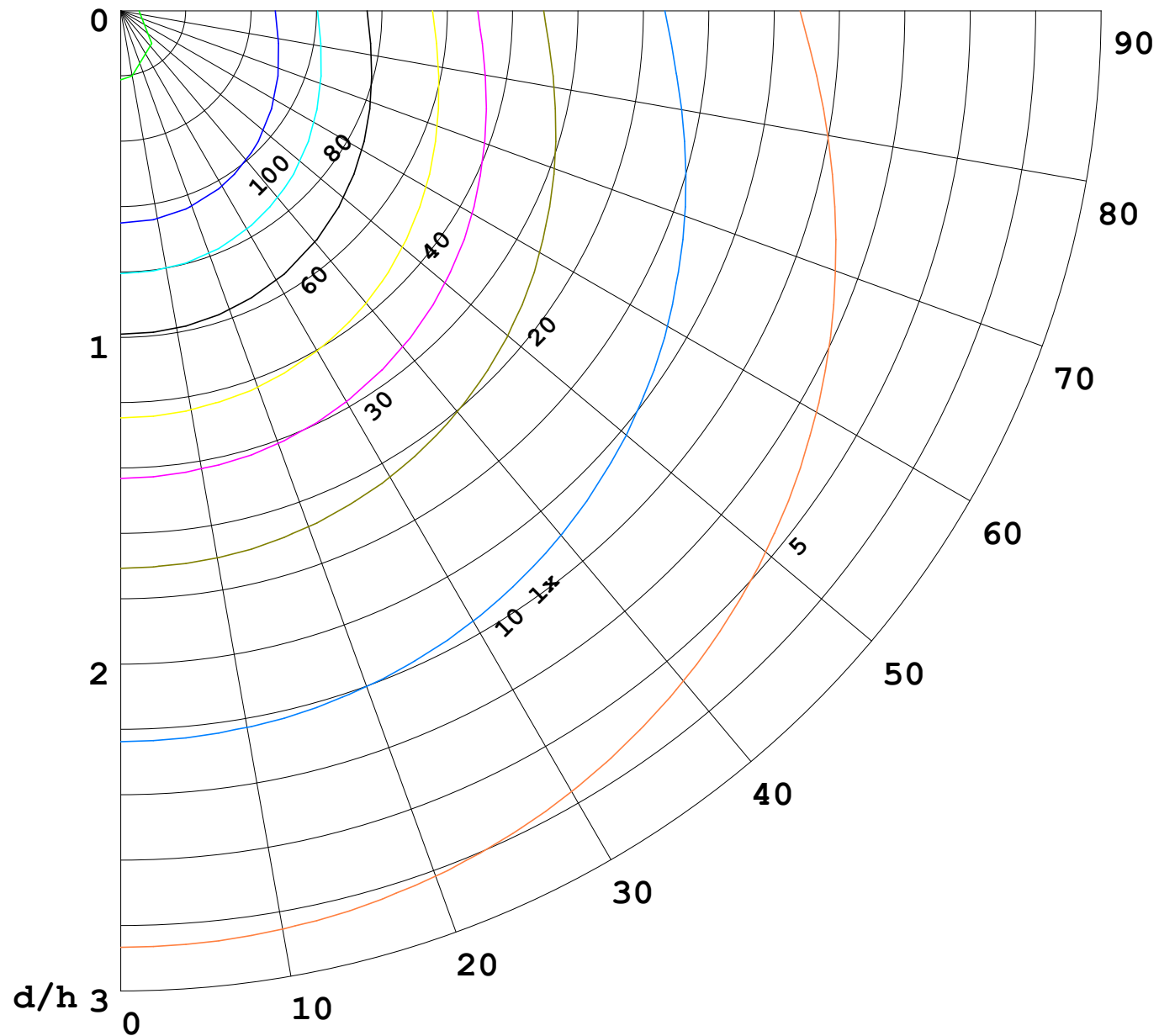
γ Range: 0 - 180DEG
γ Interval: 1.0DEG
Test System:EVERFINE GO-2000B_V1 SYSTEM V2.00.488
Humidity:65.0%
Test Distance:6.360m [K=1.0000]
Remarks: RED

I (cd)



1000 lm

$\kappa = 1$



F = 1000 lm
 K = 0.7
 Hcc = 0.8 m
 Hfc = 0.0 m
 Eave = 100 lx

	Pcc	Pw	Pfc
—————	70	50	30
—————	50	30	20

