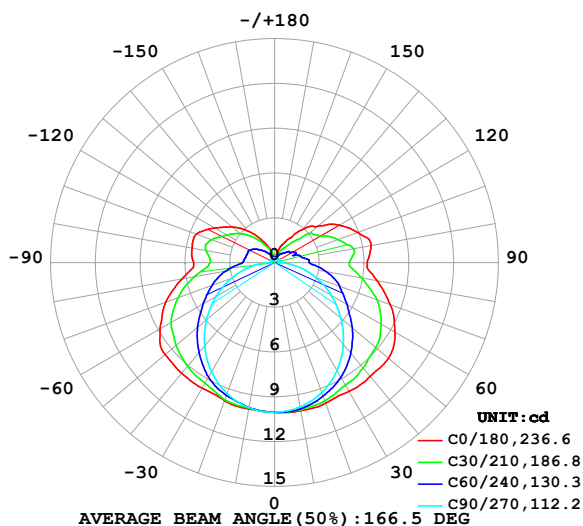


LUMINAIRE PHOTOMETRIC TEST REPORT

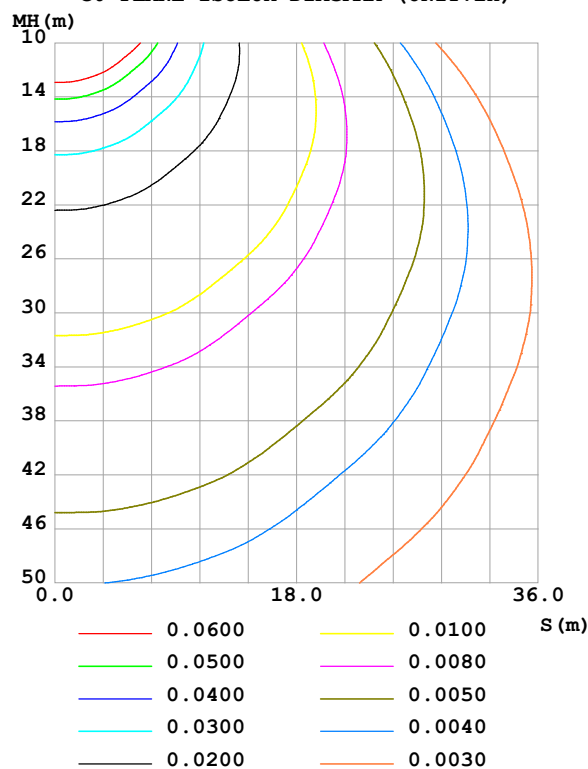
Test:U:24.00V I:0.4771A P:11.45W PF:1.000 Freq:0Hz Lamp Flux:57.1836x1 lm		
NAME: SF18-24V-5050-70-SPI-RGBW(2700K)-B	TYPE:	WEIGHT:
SPEC.:	DIM.: Length=1m	SERIAL No.:
MFR.: Olym pia lighting	SUR.:	Shielding Angle:

DATA OF LAMP		PHOTOMETRIC DATA				Eff: 4.99 lm/W
MODEL	5050	I _{max} (cd)	10.09	S/MH(C0/180)	1.49	
NOMINAL POWER(W)		LOR(%)	100.0	S/MH(C90/270)	1.25	
RATED VOLTAGE(V)	24	TOTAL FLUX(lm)	57.184	η UP,DN(C0-180)	13.3,37.0	
NOMINAL FLUX(lm)	57.1836	CIE CLASS	SEMI-D.	η UP,DN(C180-360)	12.9,36.9	
LAMPS INSIDE	1	η up (%)	26.1	CIBSE SHR NOM	1.50	
TEST VOLTAGE(V)		η down (%)	73.9	CIBSE SHR MAX	1.55	

LUMINOUS INTENSITY DISTRIBUTION DIAGRAM



C0 PLANE ISOLUX DIAGRAM (UNIT:lx)



C Range: 0 - 360DEG
C Interval: 30.0DEG
Test Speed: HIGH
Temperature:25.3℃
Operators:
Test Date:2025-03-17

γ Range: 0 - 180DEG
γ Interval: 1.0DEG
Test System:EVERFINE GO-2000B_V1 SYSTEM V2.00.488
Humidity:65.0%
Test Distance:6.360m [K=1.0000]
Remarks:

ZONAL FLUX DIAGRAM

ZONAL FLUX DIAGRAM:

γ	C0	C45	C90	C135	C180	C225	C270	C315	γ	Φ zone	Φ total	%lum, lamp
10	10.08	9.984	9.826	9.878	9.963	9.879	9.876	10.02	0- 10	0.9533	0.9533	1.67,1.67
20	10.02	9.686	9.269	9.607	9.838	9.622	9.328	9.734	10- 20	2.777	3.730	6.52,6.52
30	9.968	9.183	8.358	9.061	9.721	9.100	8.455	9.258	20- 30	4.342	8.072	14.1,14.1
40	9.960	8.589	7.162	8.422	9.694	8.475	7.297	8.690	30- 40	5.559	13.63	23.8,23.8
50	9.977	7.830	5.795	7.620	9.585	7.685	5.959	7.942	40- 50	6.319	19.95	34.9,34.9
60	9.306	6.924	4.385	6.704	8.863	6.771	4.532	7.044	50- 60	6.565	26.52	46.4,46.4
70	8.248	5.973	2.955	5.625	7.764	5.666	3.070	6.076	60- 70	6.232	32.75	57.3,57.3
80	6.974	4.716	1.550	4.366	6.308	4.399	1.637	4.799	70- 80	5.376	38.12	66.7,66.7
90	6.194	3.676	0.3121	3.301	5.436	3.234	0.3156	3.665	80- 90	4.124	42.25	73.9,73.9
100	6.568	3.658	0.3207	3.431	5.620	3.335	0.2889	3.665	90-100	3.699	45.95	80.3,80.3
110	5.938	2.970	0.3236	3.279	5.576	3.221	0.2947	3.178	100-110	3.498	49.44	86.5,86.5
120	5.024	2.505	0.3294	2.795	4.659	2.739	0.2976	2.608	110-120	2.879	52.32	91.5,91.5
130	3.822	2.097	0.3323	2.241	3.719	2.192	0.2976	2.131	120-130	2.137	54.46	95.2,95.2
140	2.908	1.267	0.3352	1.646	2.761	1.605	0.2832	1.324	130-140	1.401	55.86	97.7,97.7
150	1.789	0.8234	0.3352	1.070	1.752	1.046	0.2832	0.8071	140-150	0.7741	56.64	99,99
160	1.108	0.5277	0.3351	0.6755	0.9999	0.6592	0.2860	0.5229	150-160	0.3716	57.01	99.7,99.7
170	0.3896	0.3750	0.3323	0.4273	0.4006	0.4241	0.3034	0.3668	160-170	0.1419	57.15	99.9,99.9
180	0.3403	0.3375	0.3323	0.3379	0.3403	0.3418	0.3207	0.3350	170-180	0.0350	57.18	100,100
DEG	LUMINOUS INTENSITY:cd									UNIT:lm		

Conical surface Flux(90deg): 16.725 lm

%lum = 29.2%

%lamp = 29.2%

Conical surface Flux(130deg): 29.705 lm

%lum = 51.9%

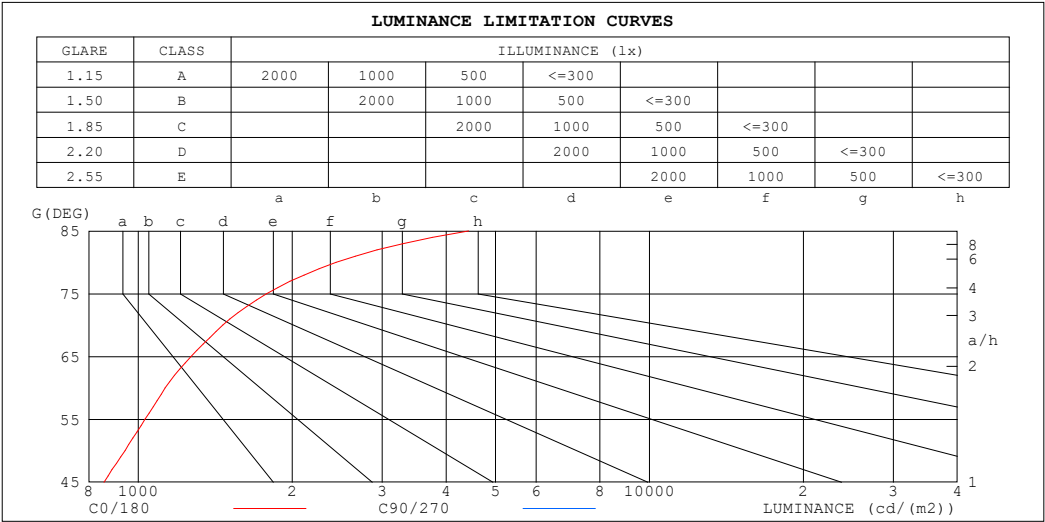
%lamp = 51.9%

C Range: 0 - 360DEG
 C Interval: 30.0DEG
 Test Speed: HIGH
 Temperature:25.3℃
 Operators:
 Test Date:2025-03-17

γ Range: 0 - 180DEG
 γ Interval: 1.0DEG
 Test System:EVERFINE GO-2000B_V1 SYSTEM V2.00.488
 Humidity:65.0%
 Test Distance:6.360m [K=1.0000]
 Remarks:

LUMINANCE LIMITATION CURVES

Test:U:24.00V I:0.4771A P:11.45W PF:1.000 Freq:0Hz Lamp Flux:57.1836x1 lm		
NAME: SF18-24V-5050-70-SPI-RGBW(2700K)-B	TYPE:	WEIGHT:
SPEC.:	DIM.: Length=1m	SERIAL No.:
MFR.: OLympia lighting	SUR.:	Shielding Angle:



LUMINANCE cd/(m2)		
G (DEG)	C0/180	C90/270
85	4424	601
80	2436	541
75	1783	527
70	1463	523
65	1268	526
60	1129	531
55	1031	538
50	942	546
45	857	556

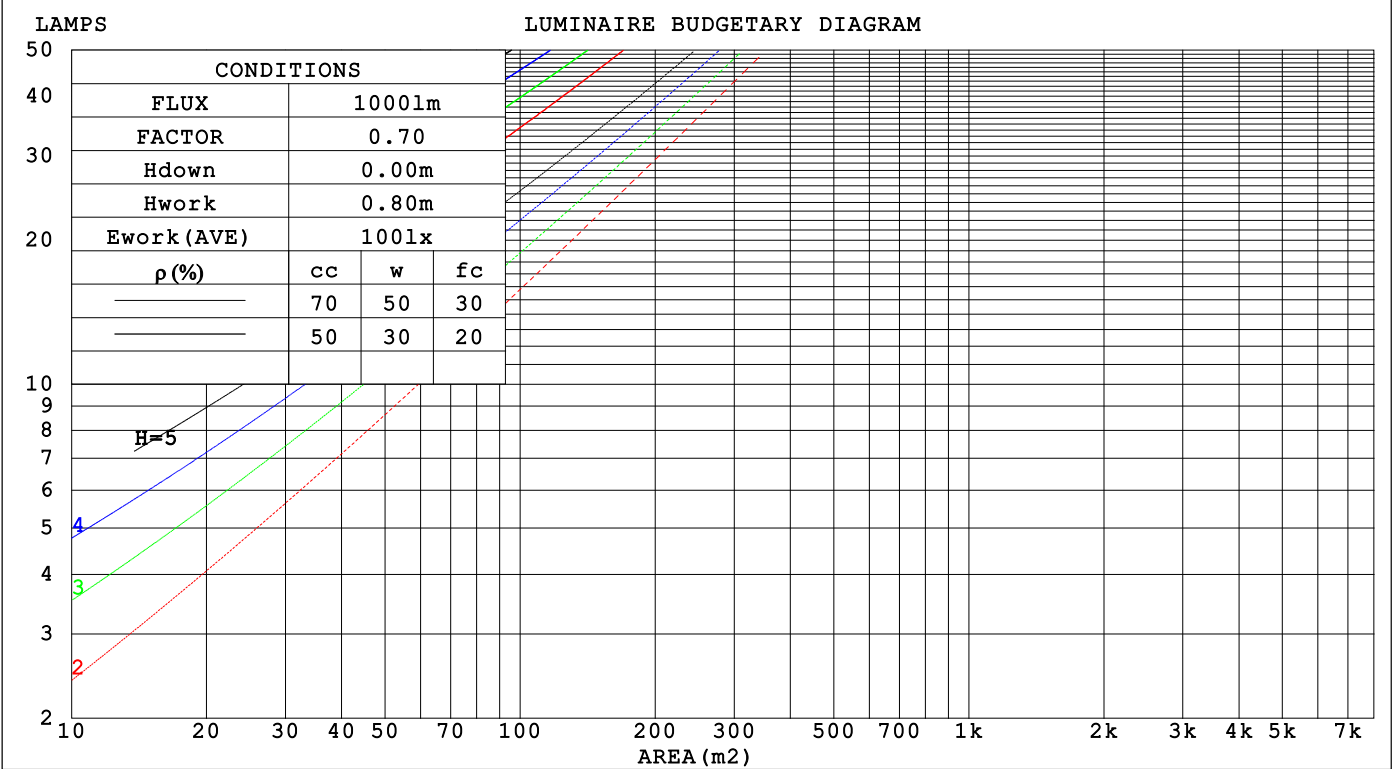
C Range: 0 - 360DEG
C Interval: 30.0DEG
Test Speed: HIGH
Temperature:25.3℃
Operators:
Test Date:2025-03-17

γ Range: 0 - 180DEG
γ Interval: 1.0DEG
Test System:EVERFINE GO-2000B_V1 SYSTEM V2.00.488
Humidity:65.0%
Test Distance:6.360m [K=1.0000]
Remarks:

CU AND LUMINAIRE BUDGETARY ESTIMATE DIAGRAM

Test:U:24.00V I:0.4771A P:11.45W PF:1.000 Freq:0Hz Lamp Flux:57.1836x1 lm		
NAME: SF18-24V-5050-70-SPI-RGBW(2700K)-B	TYPE:	WEIGHT:
SPEC.:	DIM.: Length=1m	SERIAL No.:
MFR.: OLYMPIA lighting	SUR.:	Shielding Angle:

pcc	80%			70%			50%			30%			10%			0
pw	50%	30%	10%	50%	30%	10%	50%	30%	10%	50%	30%	10%	50%	30%	10%	0
pfc	20%			20%			20%			20%			20%			0
RCR	RCR:Room Cavity Ratio															



C Range: 0 - 360DEG
C Interval: 30.0DEG
Test Speed: HIGH
Temperature:25.3℃
Operators:
Test Date:2025-03-17

γ Range: 0 - 180DEG
γ Interval: 1.0DEG
Test System:EVERFINE GO-2000B_V1 SYSTEM V2.00.488
Humidity:65.0%
Test Distance:6.360m [K=1.0000]
Remarks:

WEC AND CCEC

Test:U:24.00V I:0.4771A P:11.45W PF:1.000 Freq:0Hz Lamp Flux:57.1836x1 lm		
NAME: SF18-24V-5050-70-SPI-RGBW(2700K)-B	TYPE:	WEIGHT:
SPEC.:	DIM.: Length=1m	SERIAL No.:
MFR.: OLympia lighting	SUR.:	Shielding Angle:

pcc	80%			70%			50%			30%			10%			0	
pw	50%	30%	10%	50%	30%	10%	50%	30%	10%	50%	30%	10%	50%	30%	10%	0	
pfc	20%			20%			20%			20%			20%			0	
RCR	RCR:Room Cavity Ratio						Wall Exitance Coefficients(WEC)										
0.0																	
1.0	.384	.219	.069	.369	.211	.067	.341	.195	.062	.315	.181	.058	.291	.168	.054		
2.0	.332	.182	.056	.319	.176	.054	.293	.163	.051	.269	.151	.047	.247	.140	.044		
3.0	.295	.157	.047	.283	.151	.046	.259	.140	.043	.238	.130	.040	.217	.120	.037		
4.0	.265	.138	.041	.254	.133	.039	.233	.123	.037	.213	.114	.034	.195	.106	.032		
5.0	.241	.123	.036	.231	.118	.035	.211	.110	.032	.193	.102	.030	.176	.094	.028		
6.0	.221	.111	.032	.211	.107	.031	.194	.099	.029	.177	.092	.027	.161	.085	.025		
7.0	.204	.101	.029	.195	.097	.028	.178	.090	.026	.163	.084	.024	.149	.077	.023		
8.0	.189	.092	.026	.181	.089	.025	.166	.083	.024	.151	.077	.022	.138	.071	.021		
9.0	.176	.085	.024	.168	.082	.023	.154	.076	.022	.141	.071	.020	.129	.065	.019		
10.0	.164	.079	.022	.158	.076	.021	.145	.071	.020	.132	.066	.019	.121	.061	.017		

pcc	80%			70%			50%			30%			10%			0
pw	50%	30%	10%	50%	30%	10%	50%	30%	10%	50%	30%	10%	50%	30%	10%	0
pfc	20%			20%			20%			20%			20%			0
RCR	RCR:Room Cavity Ratio						Ceiling Cavity Exitance Coefficients (CCEC)									
0.0	.389	.389	.389	.333	.333	.333	.227	.227	.227	.131	.131	.131	.042	.042	.042	
1.0	.386	.356	.329	.330	.306	.283	.226	.210	.196	.130	.122	.114	.042	.039	.037	
2.0	.380	.334	.295	.325	.287	.255	.223	.199	.178	.129	.116	.104	.041	.037	.034	
3.0	.372	.318	.274	.319	.274	.237	.219	.190	.167	.127	.111	.098	.041	.036	.032	
4.0	.365	.305	.260	.313	.264	.226	.215	.184	.159	.125	.108	.094	.040	.035	.031	
5.0	.357	.296	.250	.307	.256	.218	.211	.179	.154	.122	.105	.091	.039	.034	.030	
6.0	.350	.288	.243	.301	.249	.212	.208	.175	.150	.120	.103	.089	.039	.034	.029	
7.0	.343	.281	.238	.295	.244	.208	.204	.171	.147	.118	.101	.088	.038	.033	.029	
8.0	.336	.276	.235	.290	.239	.205	.200	.168	.145	.117	.099	.086	.038	.033	.029	
9.0	.330	.271	.232	.284	.235	.202	.197	.166	.143	.115	.098	.086	.037	.032	.028	
10.0	.324	.267	.229	.280	.232	.200	.194	.163	.142	.113	.097	.085	.037	.032	.028	

C Range: 0 - 360DEG
C Interval: 30.0DEG
Test Speed: HIGH
Temperature:25.3℃
Operators:
Test Date:2025-03-17

γ Range: 0 - 180DEG
γ Interval: 1.0DEG
Test System:EVERFINE GO-2000B_V1 SYSTEM V2.00.488
Humidity:65.0%
Test Distance:6.360m [K=1.0000]
Remarks:

UGR(Unified Glare Rating) Table

Test:U:24.00V I:0.4771A P:11.45W PF:1.000 Freq:0Hz Lamp Flux:57.1836x1 lm											
NAME: SF18-24V-5050-70-SPI-RGBW(2700K)-B						TYPE:		WEIGHT:			
SPEC.:						DIM.: Length=1m		SERIAL No.:			
MFR.: OLympia lighting						SUR.:		Shielding Angle:			
ceiling/cavity	0.7	0.7	0.5	0.5	0.3	0.7	0.7	0.5	0.5	0.3	
walls	0.5	0.3	0.5	0.3	0.3	0.5	0.3	0.5	0.3	0.3	
working plane	0.2	0.2	0.2	0.2	0.2	0.2	0.2	0.2	0.2	0.2	
Room dimensions		Viewed crosswise					Viewed endwise				
x = 2H y = 2H	2H	21.8	23.1	22.4	23.8	24.5	18.6	19.9	19.3	20.6	21.3
	3H	24.7	25.9	25.3	26.5	27.3	20.4	21.6	21.0	22.2	23.0
	4H	26.2	27.3	26.8	28.0	28.7	21.2	22.3	21.8	23.0	23.7
	6H	27.8	28.9	28.5	29.5	30.4	21.8	22.9	22.5	23.6	24.4
	8H	28.7	29.7	29.4	30.4	31.2	22.1	23.1	22.8	23.8	24.6
	12H	29.7	30.7	30.4	31.4	32.3	22.3	23.3	23.0	24.0	24.8
4H	2H	22.3	23.5	23.0	24.1	24.9	20.1	21.2	20.7	21.9	22.6
	3H	25.4	26.4	26.1	27.1	27.9	22.0	23.0	22.7	23.7	24.5
	4H	27.1	28.0	27.8	28.7	29.6	23.0	23.9	23.7	24.6	25.5
	6H	29.0	29.8	29.7	30.5	31.4	23.8	24.6	24.6	25.4	26.3
	8H	30.0	30.7	30.7	31.5	32.4	24.2	24.9	24.9	25.7	26.6
	12H	31.2	31.9	31.9	32.6	33.6	24.5	25.2	25.2	25.9	26.9
8H	4H	27.4	28.2	28.2	28.9	29.8	24.2	24.9	24.9	25.7	26.6
	6H	29.6	30.2	30.3	31.0	31.9	25.4	26.0	26.2	26.8	27.7
	8H	30.8	31.4	31.6	32.2	33.1	25.9	26.5	26.7	27.3	28.3
	12H	32.2	32.7	33.0	33.5	34.5	26.4	26.9	27.2	27.7	28.7
12H	4H	27.4	28.1	28.2	28.9	29.8	24.6	25.3	25.3	26.0	27.0
	6H	29.7	30.2	30.5	31.0	32.0	26.0	26.5	26.8	27.3	28.3
	8H	31.0	31.5	31.8	32.3	33.3	26.7	27.2	27.5	28.0	29.0
Variations with the observer position at spacings(CIE Pub.117):											
S = 1.0H		+ 0.1 / - 0.1					+ 0.1 / - 0.1				
1.5H		+ 0.2 / - 0.2					+ 0.2 / - 0.3				
2.0H		+ 0.2 / - 0.3					+ 0.2 / - 0.4				

CIE Pub.117, 57.18 lm Total Lamp Luminous Flux Correct (8log(F/F0) = -9.9)
Area: 0.0165 m2

C Range: 0 - 360DEG
C Interval: 30.0DEG
Test Speed: HIGH
Temperature:25.3℃
Operators:
Test Date:2025-03-17

γ Range: 0 - 180DEG
γ Interval: 1.0DEG
Test System:EVERFINE GO-2000B_V1 SYSTEM V2.00.488
Humidity:65.0%
Test Distance:6.360m [K=1.0000]
Remarks:

UTILIZATION FACTORS TABLE

Test:U:24.00V I:0.4771A P:11.45W PF:1.000 Freq:0Hz Lamp Flux:57.1836x1 lm		
NAME: SF18-24V-5050-70-SPI-RGBW(2700K)-B	TYPE:	WEIGHT:
SPEC.:	DIM.: Length=1m	SERIAL No.:
MFR.: OLympia lighting	SUR.:	Shielding Angle:

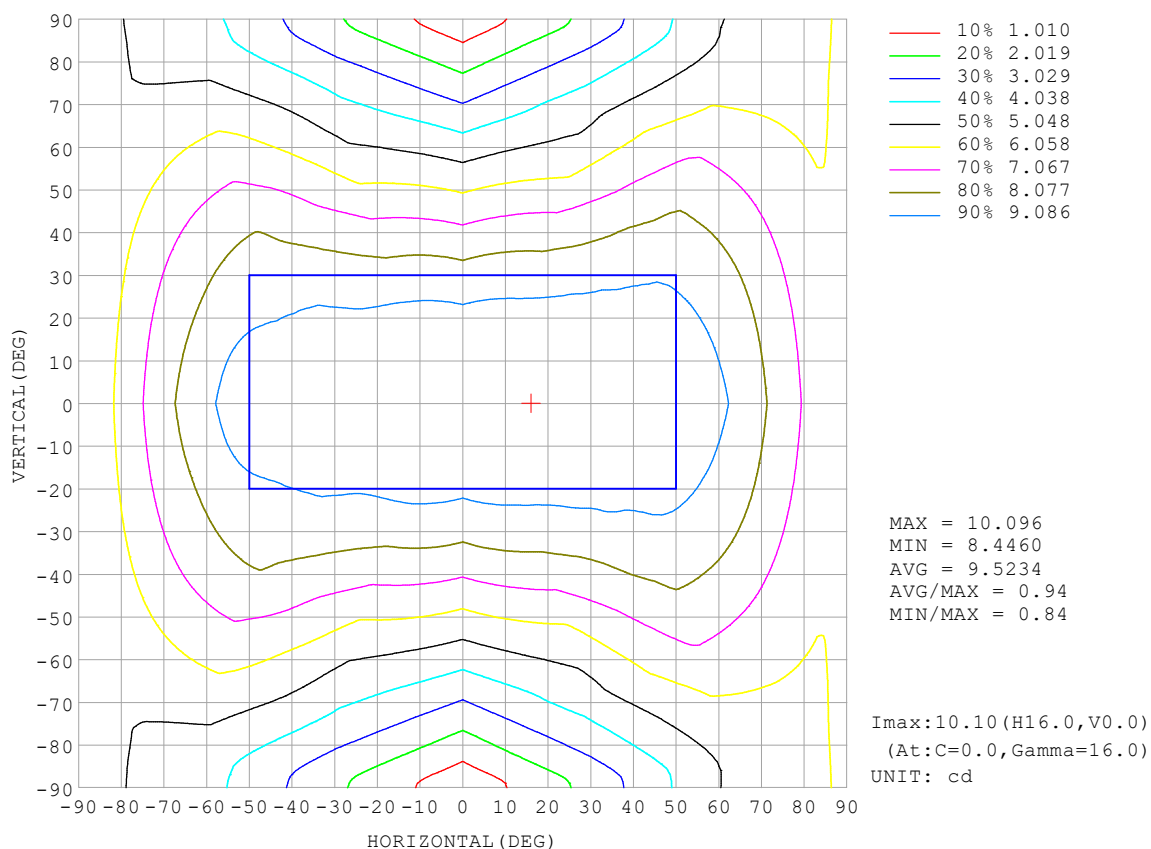
REFLECTANCE										
Ceiling	0.8	0.8	0.8	0.7	0.7	0.7	0.5	0.5	0.5	0
Walls	0.7	0.5	0.3	0.7	0.5	0.3	0.7	0.5	0.3	0
Working plane	0.2	0.2	0.2	0.2	0.2	0.2	0.2	0.2	0.2	0
ROOM INDEX	UTILIZATION FACTORS (PERCENT) $k(RI) \times RCR = 5$									
$k = 0.60$	45	32	25	43	32	25	41	30	24	17
0.80	54	40	32	52	40	32	49	38	31	22
1.00	61	48	40	59	47	39	55	47	37	28
1.25	68	55	47	66	54	45	60	50	43	33
1.50	74	61	52	70	59	51	65	55	48	36
2.00	81	70	61	77	67	59	71	62	56	42
2.50	86	75	67	82	72	65	74	67	60	46
3.00	89	80	72	85	77	70	77	70	65	49
4.00	94	86	79	90	82	76	81	75	70	54
5.00	97	90	84	93	86	81	84	79	74	57
ROOM INDEX	UF (total)									Direct
According to DIN EN 13032-2 2004			Suspended					SHRNOM = 1.25		

C Range: 0 - 360DEG
 C Interval: 30.0DEG
 Test Speed: HIGH
 Temperature: 25.3 °C
 Operators:
 Test Date: 2025-03-17

γ Range: 0 - 180DEG
 γ Interval: 1.0DEG
 Test System: EVERFINE GO-2000B_V1 SYSTEM V2.00.488
 Humidity: 65.0%
 Test Distance: 6.360m [K=1.0000]
 Remarks:

ISOCANDELA DIAGRAM

Test:U:24.00V I:0.4771A P:11.45W PF:1.000 Freq:0Hz Lamp Flux:57.1836x1 lm		
NAME: SF18-24V-5050-70-SPI-RGBW(2700K)-B	TYPE:	WEIGHT:
SPEC.:	DIM.: Length=1m	SERIAL No.:
MFR.: OLympia lighting	SUR.:	Shielding Angle:

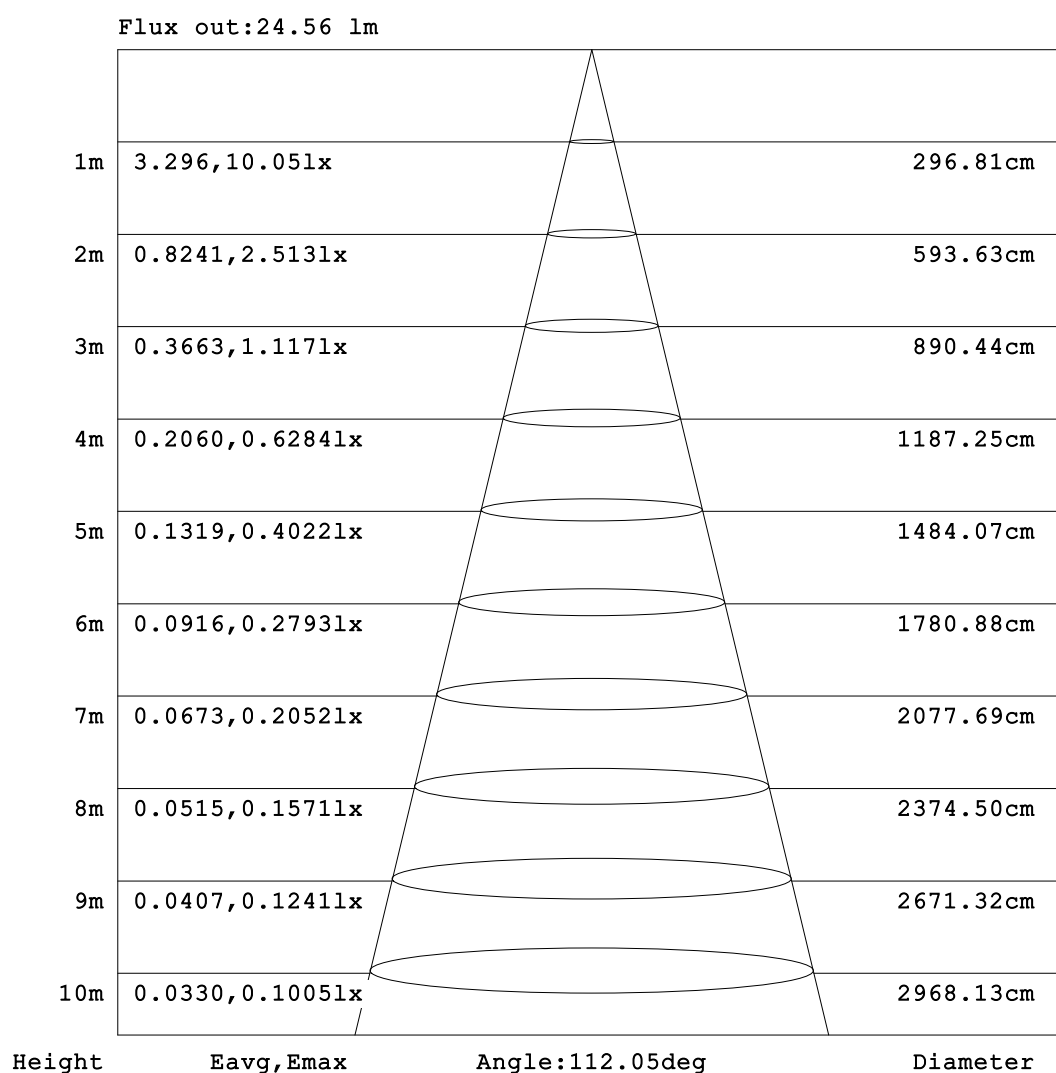


C Range: 0 - 360DEG
C Interval: 30.0DEG
Test Speed: HIGH
Temperature:25.3℃
Operators:
Test Date:2025-03-17

γ Range: 0 - 180DEG
γ Interval: 1.0DEG
Test System:EVERFINE GO-2000B_V1 SYSTEM V2.00.488
Humidity:65.0%
Test Distance:6.360m [K=1.0000]
Remarks:

AAI Figure

Test:U:24.00V I:0.4771A P:11.45W PF:1.000 Freq:0Hz Lamp Flux:57.1836x1 lm		
NAME: SF18-24V-5050-70-SPI-RGBW(2700K)-B	TYPE:	WEIGHT:
SPEC.:	DIM.: Length=1m	SERIAL No.:
MFR.: OLympia lighting	SUR.:	Shielding Angle:



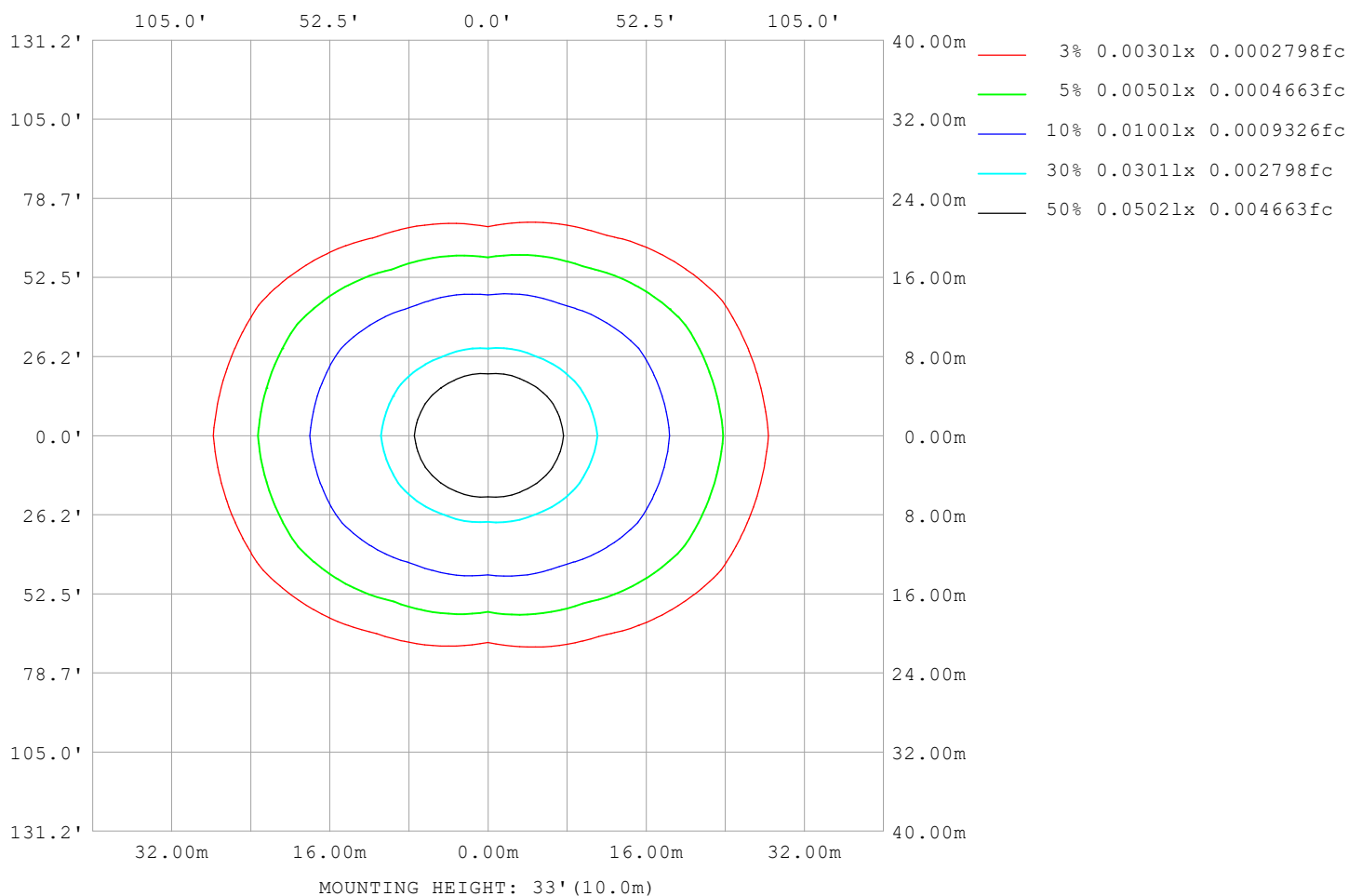
Note: The Curves indicate the illuminated area and the average illumination when the luminaire is at different distance.

C Range: 0 - 360DEG
C Interval: 30.0DEG
Test Speed: HIGH
Temperature: 25.3°C
Operators:
Test Date: 2025-03-17

γ Range: 0 - 180DEG
γ Interval: 1.0DEG
Test System: EVERFINE GO-2000B_V1 SYSTEM V2.00.488
Humidity: 65.0%
Test Distance: 6.360m [K=1.0000]
Remarks:

ISOLUX DIAGRAM

Test:U:24.00V I:0.4771A P:11.45W PF:1.000 Freq:0Hz Lamp Flux:57.1836x1 lm		
NAME: SF18-24V-5050-70-SPI-RGBW(2700K)-B	TYPE:	WEIGHT:
SPEC.:	DIM.: Length=1m	SERIAL No.:
MFR.: OLympia lighting	SUR.:	Shielding Angle:



C Range: 0 - 360DEG
C Interval: 30.0DEG
Test Speed: HIGH
Temperature: 25.3°C
Operators:
Test Date: 2025-03-17

γ Range: 0 - 180DEG
γ Interval: 1.0DEG
Test System: EVERFINE GO-2000B_V1 SYSTEM V2.00.488
Humidity: 65.0%
Test Distance: 6.360m [K=1.0000]
Remarks:

LED Avg.L Report

Test:U:24.00V I:0.4771A P:11.45W PF:1.000 Freq:0Hz Lamp Flux:57.1836x1 lm		
NAME: SF18-24V-5050-70-SPI-RGBW(2700K)-B	TYPE:	WEIGHT:
SPEC.:	DIM.: Length=1m	SERIAL No.:
MFR.: OLympia lighting	SUR.:	Shielding Angle:

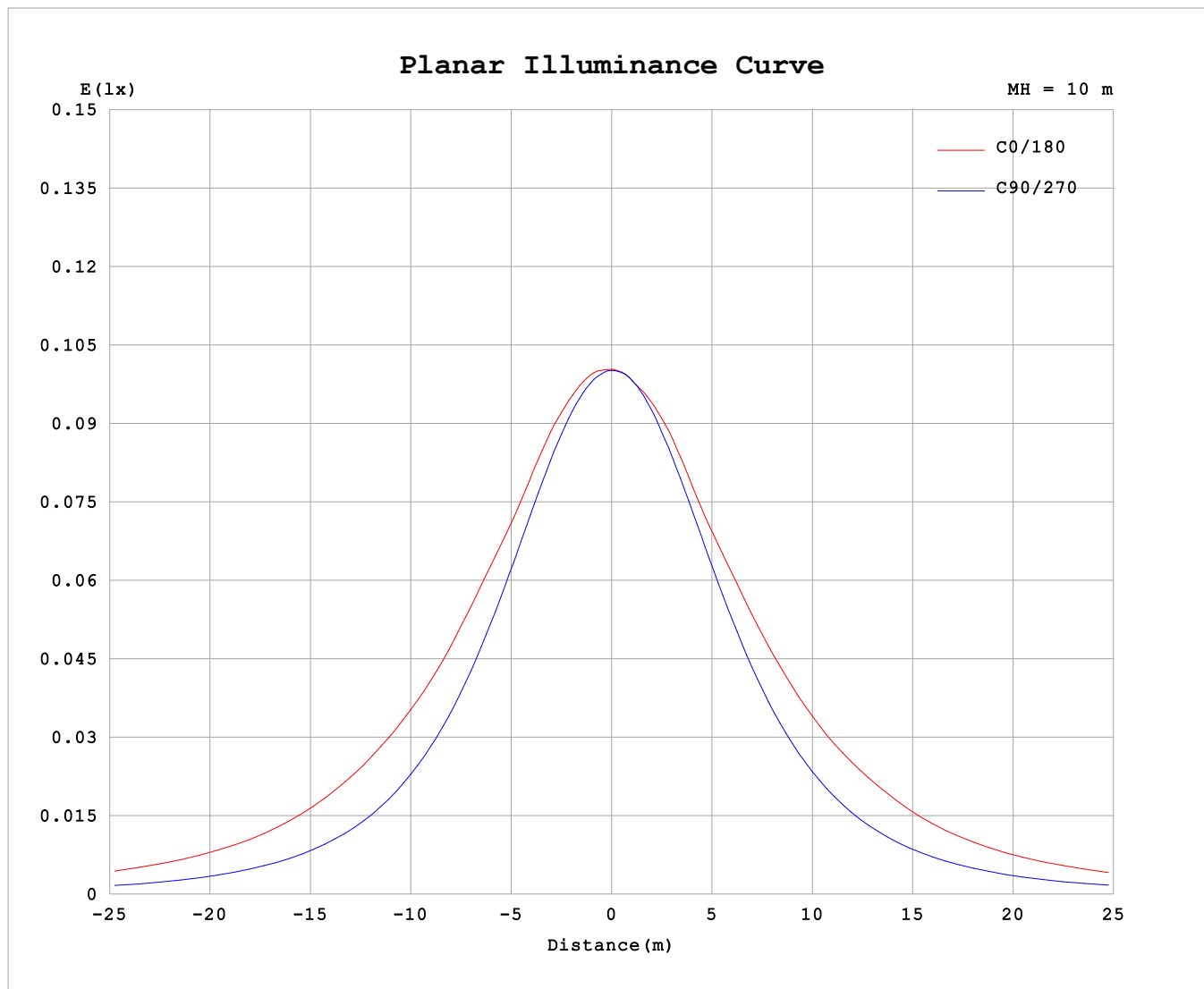
AvgL	cd/m2
L_0~180 (65) av	1229
L_0~180 (75) av	1715
L_0~180 (85) av	4163
L_90~270 (65) av	536
L_90~270 (75) av	539
L_90~270 (85) av	628
L_45 (65) av	915
L_45 (75) av	1238
L_45 (85) av	2739

Standard: GB/T 29293-2012

C Range: 0 - 360DEG
C Interval: 30.0DEG
Test Speed: HIGH
Temperature:25.3℃
Operators:
Test Date:2025-03-17

γ Range: 0 - 180DEG
γ Interval: 1.0DEG
Test System:EVERFINE GO-2000B_V1 SYSTEM V2.00.488
Humidity:65.0%
Test Distance:6.360m [K=1.0000]
Remarks:

Planar Illuminance Curve



C Range: 0 - 360DEG
C Interval: 30.0DEG
Test Speed: HIGH
Temperature: 25.3 °C
Operators:
Test Date: 2025-03-17

γ Range: 0 - 180DEG
 γ Interval: 1.0DEG
Test System: EVERFINE GO-2000B_V1 SYSTEM V2.00.488
Humidity: 65.0%
Test Distance: 6.360m [K=1.0000]
Remarks:

LUMINOUS DISTRIBUTION INTENSITY DATA

Test:U:24.00V I:0.4771A P:11.45W PF:1.000 Freq:0Hz Lamp Flux:57.1836x1 lm																	
NAME: SF18-24V-5050-70-SPI-RGBW(2700K)-B									TYPE:			WEIGHT:					
SPEC.:									DIM.: Length=1m			SERIAL No.:					
MFR.: OLympia lighting									SUR.:			Shielding Angle:					

Table--1

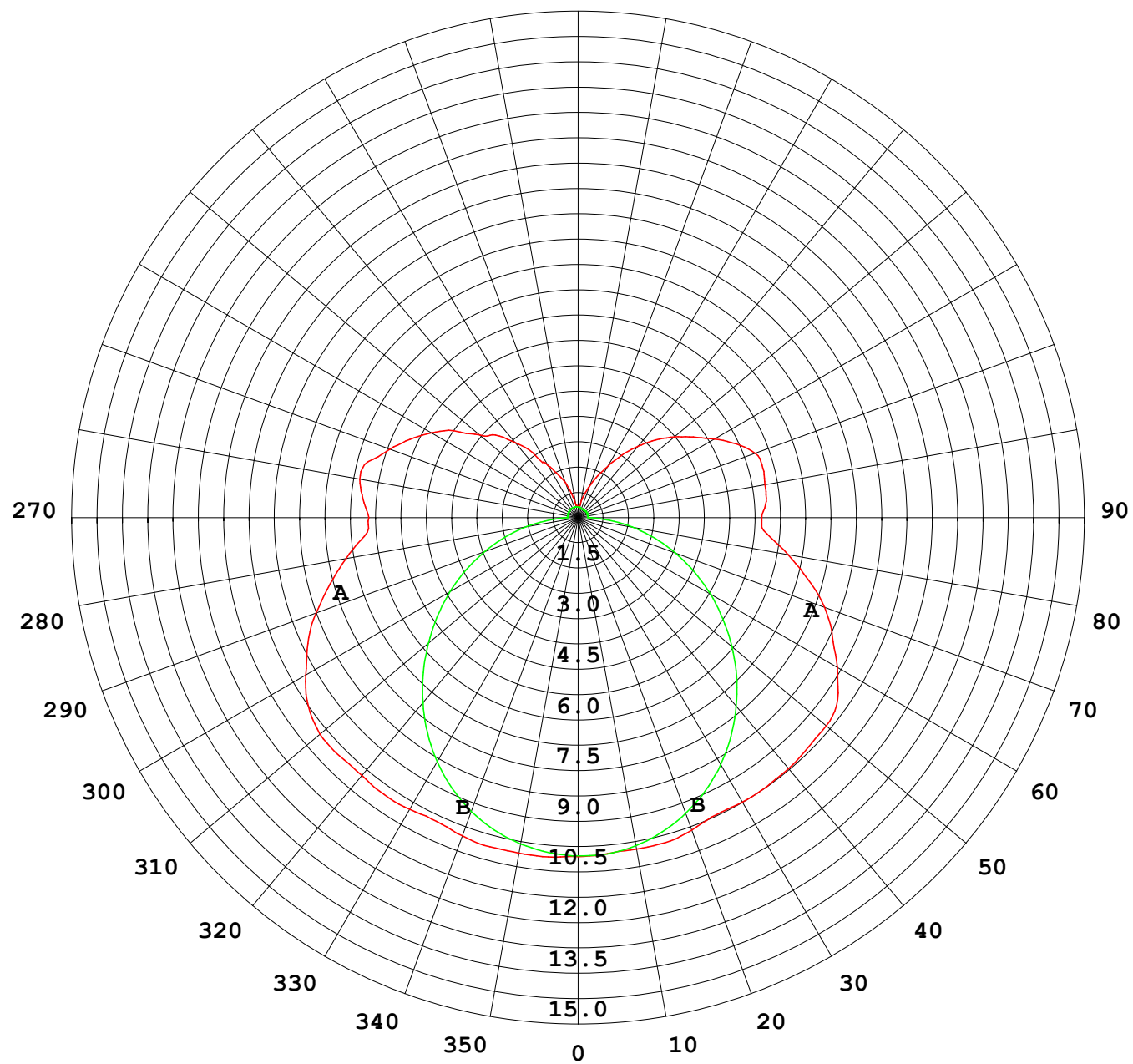
UNIT: cd

C (DEG) γ (DEG)	0	30	60	90	120	150	180	210	240	270	300	330						
0	10.0	10.0	10.0	10.0	10.0	10.0	10.0	10.0	10.0	10.0	10.0	10.0						
5	10.1	10.0	10.0	9.97	10.00	9.98	9.99	9.99	9.99	10.0	10.0	10.1						
10	10.1	10.0	9.96	9.83	9.86	9.89	9.96	9.90	9.86	9.88	9.96	10.1						
15	10.1	9.94	9.78	9.60	9.65	9.87	9.96	9.88	9.65	9.65	9.78	10.0						
20	10.0	9.85	9.52	9.27	9.46	9.75	9.84	9.78	9.47	9.33	9.54	9.93						
25	9.92	9.67	9.23	8.86	9.20	9.49	9.69	9.53	9.22	8.93	9.27	9.76						
30	9.97	9.48	8.88	8.36	8.82	9.30	9.72	9.34	8.86	8.46	8.94	9.58						
35	10.0	9.42	8.44	7.79	8.33	9.21	9.73	9.24	8.39	7.91	8.51	9.52						
40	9.96	9.23	7.94	7.16	7.80	9.04	9.69	9.08	7.87	7.30	8.03	9.35						
45	9.99	8.99	7.39	6.49	7.25	8.84	9.63	8.87	7.33	6.65	7.49	9.11						
50	9.98	8.85	6.81	5.79	6.66	8.58	9.58	8.62	6.75	5.96	6.92	8.96						
55	9.75	8.63	6.15	5.10	6.02	8.27	9.38	8.31	6.11	5.25	6.28	8.75						
60	9.31	8.24	5.60	4.38	5.45	7.96	8.86	8.01	5.52	4.53	5.72	8.37						
65	8.83	7.82	5.09	3.67	4.92	7.41	8.31	7.48	4.98	3.80	5.20	7.93						
70	8.25	7.31	4.63	2.95	4.42	6.83	7.76	6.87	4.45	3.07	4.73	7.42						
75	7.61	6.59	4.12	2.25	3.90	6.19	7.04	6.22	3.94	2.35	4.22	6.69						
80	6.97	5.92	3.51	1.55	3.31	5.42	6.31	5.45	3.35	1.64	3.60	6.00						
85	6.36	5.28	2.84	0.87	2.65	4.69	5.62	4.69	2.67	0.94	2.91	5.33						
90	6.19	5.02	2.33	0.31	2.22	4.38	5.44	4.31	2.15	0.32	2.33	5.00						
95	6.40	5.26	2.33	0.32	2.13	4.53	5.59	4.40	2.07	0.29	2.32	5.22						
100	6.57	5.37	1.94	0.32	2.06	4.80	5.62	4.67	2.00	0.29	1.97	5.36						
105	6.43	4.91	1.77	0.32	2.02	4.82	5.66	4.77	1.95	0.29	1.81	5.07						
110	5.94	4.53	1.41	0.32	2.01	4.54	5.58	4.50	1.94	0.29	1.65	4.70						
115	5.49	4.12	1.59	0.33	1.99	4.13	5.17	4.09	1.91	0.30	1.68	4.19						
120	5.02	3.58	1.42	0.33	1.84	3.75	4.66	3.71	1.76	0.30	1.48	3.73						
125	4.49	3.32	1.22	0.33	1.66	3.40	4.17	3.38	1.59	0.30	1.28	3.43						
130	3.82	3.07	1.12	0.33	1.43	3.05	3.72	3.03	1.35	0.30	1.19	3.07						
135	3.46	2.22	0.94	0.33	1.24	2.65	3.26	2.65	1.16	0.29	0.97	2.36						
140	2.91	1.71	0.82	0.34	1.05	2.24	2.76	2.23	0.98	0.28	0.81	1.84						
145	2.36	1.29	0.70	0.34	0.89	1.79	2.26	1.79	0.81	0.28	0.67	1.43						
150	1.79	1.05	0.60	0.34	0.72	1.42	1.75	1.44	0.65	0.28	0.53	1.08						
155	1.40	0.83	0.50	0.34	0.60	1.12	1.36	1.14	0.54	0.28	0.44	0.92						
160	1.11	0.62	0.44	0.34	0.51	0.84	1.00	0.85	0.47	0.29	0.39	0.66						
165	0.70	0.44	0.39	0.33	0.44	0.60	0.69	0.62	0.40	0.29	0.35	0.46						
170	0.39	0.37	0.38	0.33	0.41	0.45	0.40	0.47	0.38	0.30	0.34	0.39						
175	0.36	0.35	0.36	0.33	0.39	0.39	0.35	0.41	0.36	0.31	0.33	0.36						
180	0.34	0.34	0.34	0.33	0.34	0.34	0.34	0.35	0.34	0.32	0.33	0.34						

C Range: 0 - 360DEG
C Interval: 30.0DEG
Test Speed: HIGH
Temperature:25.3℃
Operators:
Test Date:2025-03-17

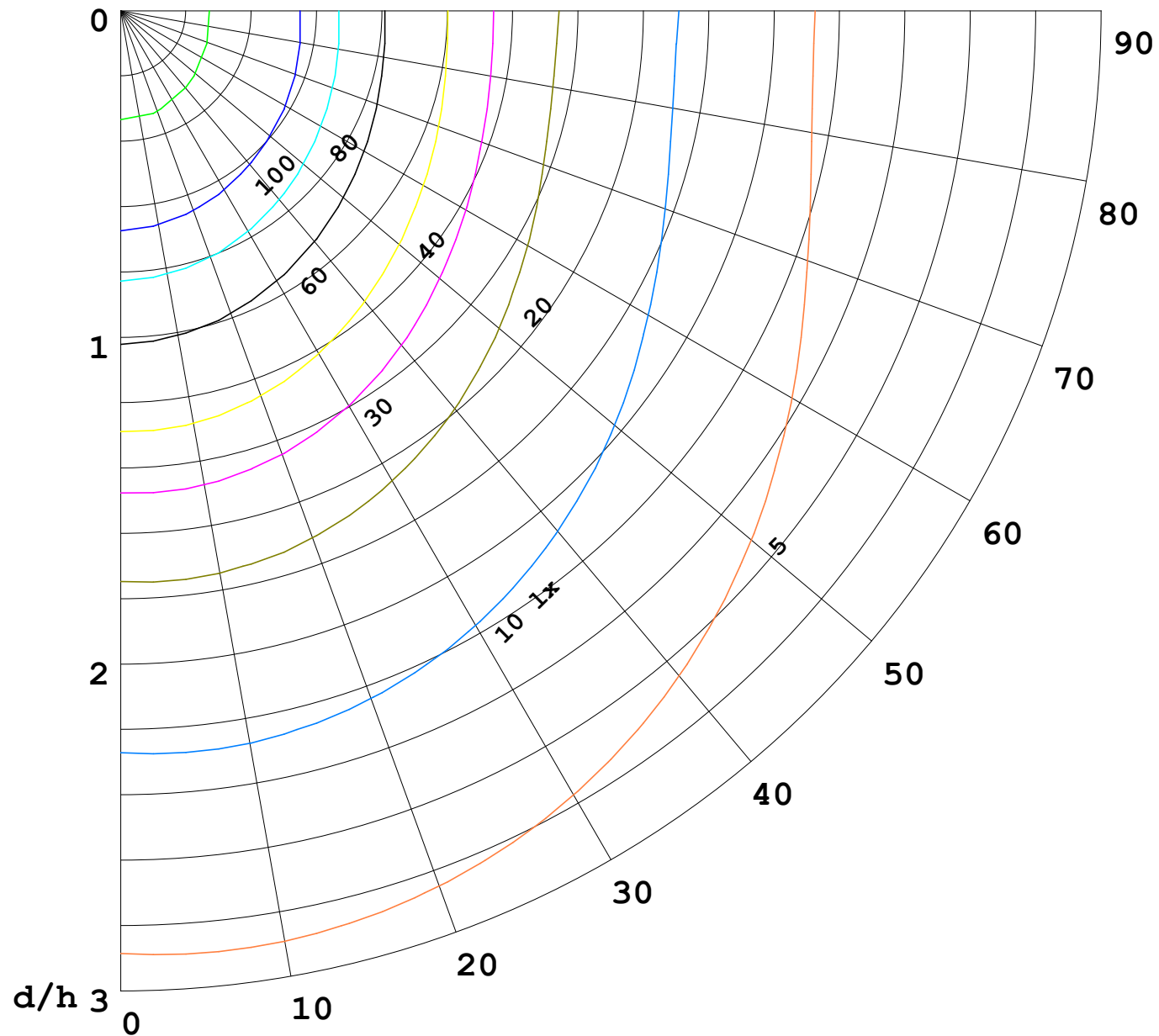
γ Range: 0 - 180DEG
γ Interval: 1.0DEG
Test System:EVERFINE GO-2000B_V1 SYSTEM V2.00.488
Humidity:65.0%
Test Distance:6.360m [K=1.0000]
Remarks:

I (cd)



1000 lm

$\kappa = 1$



F = 1000 lm
 K = 0.7
 Hcc = 0.8 m
 Hfc = 0.0 m
 Eave = 100 lx

	Pcc	Pw	Pfc
—————	70	50	30
—————	50	30	20

