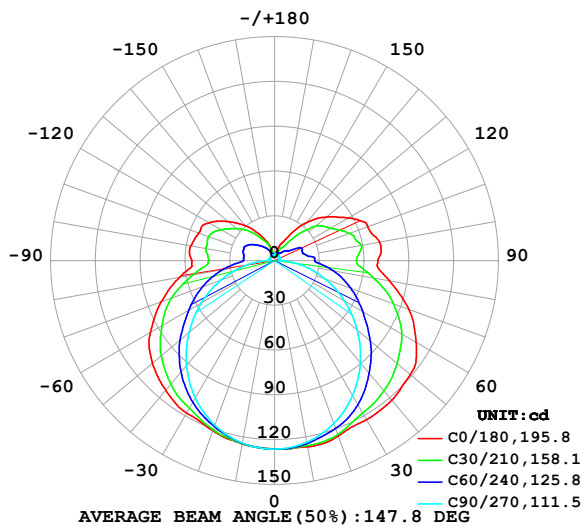


## LUMINAIRE PHOTOMETRIC TEST REPORT

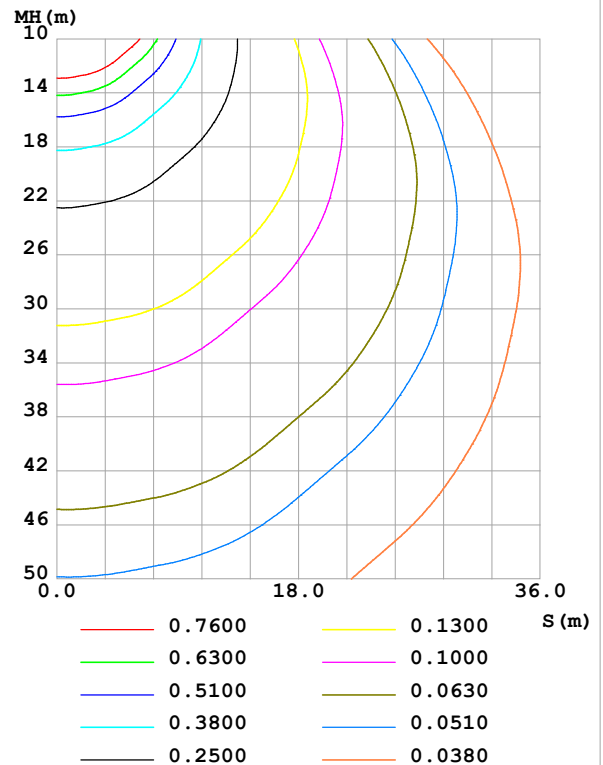
Test:U:24.00V I:0.3930A P:9.432W PF:1.000 Freq:0Hz Lamp Flux:662.955x1 lm		
NAME: SF18-24V-3528-120-3000K-80	TYPE:	WEIGHT:
SPEC.:	DIM.: Length=1m	SERIAL No.:
MFR.: OLympia lighting	SUR.:	Shielding Angle:

DATA OF LAMP		PHOTOMETRIC DATA Eff: 70.29 lm/W			
MODEL	3528	Imax (cd)	126.9	S/MH(C0/180)	1.42
NOMINAL POWER(W)	9	LOR(%)	100.0	S/MH(C90/270)	1.25
RATED VOLTAGE(V)	24	TOTAL FLUX(lm)	662.95	$\eta$ UP,DN(C0-180)	12.6,37.8
NOMINAL FLUX(lm)	662.955	CIE CLASS	SEMI-D.	$\eta$ UP,DN(C180-360)	12.2,37.4
LAMPS INSIDE	1	$\eta$ up (%)	24.8	CIBSE SHR NOM	1.50
TEST VOLTAGE(V)		$\eta$ down (%)	75.2	CIBSE SHR MAX	1.55

LUMINOUS INTENSITY DISTRIBUTION DIAGRAM



C0 PLANE ISOLUX DIAGRAM (UNIT:lx)



C Range: 0 - 360DEG  
C Interval: 30.0DEG  
Test Speed: HIGH  
Temperature:25.3℃  
Operators:  
Test Date:2025-02-19

$\gamma$  Range: 0 - 180DEG  
 $\gamma$  Interval: 1.0DEG  
Test System:EVERFINE GO-2000B\_V1 SYSTEM V2.00.488  
Humidity:65.0%  
Test Distance:6.360m [K=1.0000]  
Remarks:

## ZONAL FLUX DIAGRAM

## ZONAL FLUX DIAGRAM:

$\gamma$	C0	C45	C90	C135	C180	C225	C270	C315	$\gamma$	$\Phi$ zone	$\Phi$ total	%lum, lamp
10	126.7	125.2	123.6	124.1	124.8	124.5	124.1	125.5	0- 10	11.98	11.98	1.81,1.81
20	125.0	121.8	116.2	118.7	121.3	119.4	117.3	122.5	10- 20	34.77	46.76	7.05,7.05
30	123.1	114.8	104.5	110.9	118.0	112.0	106.3	115.7	20- 30	53.98	100.7	15.2,15.2
40	122.1	106.2	89.45	101.5	113.5	102.9	91.77	107.4	30- 40	68.42	169.2	25.5,25.5
50	118.8	95.47	72.22	89.18	107.0	91.03	74.81	96.67	40- 50	76.50	245.7	37.1,37.1
60	109.5	83.30	54.18	74.93	96.07	76.78	56.71	84.22	50- 60	77.47	323.1	48.7,48.7
70	95.89	69.49	36.00	60.60	80.75	62.49	38.31	70.44	60- 70	71.69	394.8	59.6,59.6
80	78.16	53.80	18.43	43.97	64.70	45.49	20.21	54.43	70- 80	59.70	454.5	68.6,68.6
90	69.04	40.77	3.158	32.47	55.29	32.51	3.805	40.38	80- 90	44.08	498.6	75.2,75.2
100	71.52	40.40	3.109	34.85	57.09	33.99	3.623	40.57	90-100	39.36	537.9	81.1,81.1
110	66.53	36.69	3.178	34.87	54.15	34.65	3.799	35.69	100-110	37.26	575.2	86.8,86.8
120	57.34	29.72	3.418	30.59	50.84	31.19	3.829	30.79	110-120	32.32	607.5	91.6,91.6
130	45.59	23.28	3.655	24.51	40.68	25.05	3.834	24.59	120-130	24.26	631.8	95.3,95.3
140	33.25	14.02	3.820	18.27	30.70	18.88	3.834	16.02	130-140	16.08	647.9	97.7,97.7
150	18.90	8.035	3.872	12.23	20.07	12.64	3.834	9.852	140-150	8.826	656.7	99.1,99.1
160	11.23	5.734	4.063	7.564	12.06	7.615	3.961	6.282	150-160	4.213	660.9	99.7,99.7
170	4.665	4.717	4.199	4.678	4.600	4.545	4.080	4.802	160-170	1.636	662.5	99.9,99.9
180	4.115	4.226	4.233	4.289	4.087	4.214	4.233	4.301	170-180	0.4239	663.0	100,100
DEG	LUMINOUS INTENSITY:cd									UNIT:lm		

Conical surface Flux(90deg): 206.82 lm

%lum = 31.2%

%lamp = 31.2%

Conical surface Flux(130deg): 360.07 lm

%lum = 54.3%

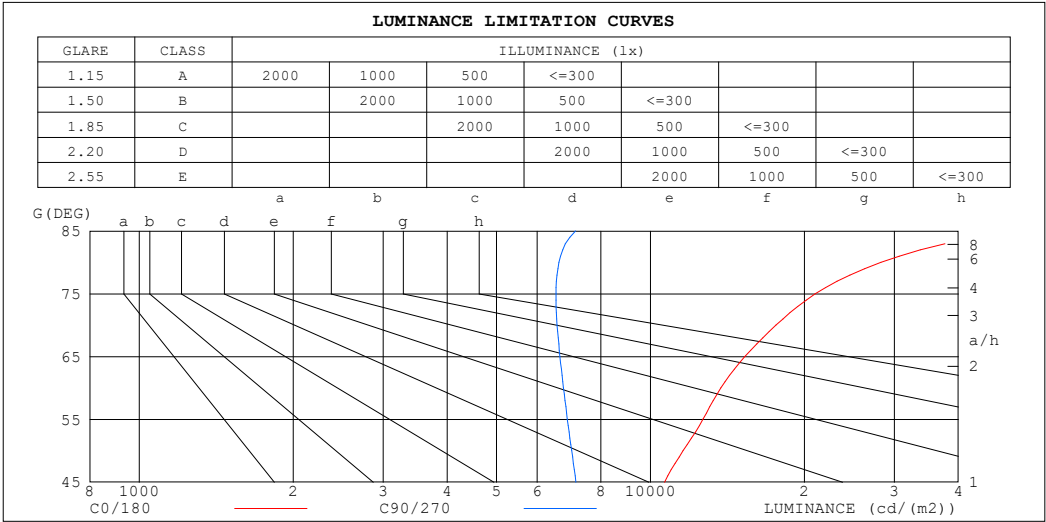
%lamp = 54.3%

C Range: 0 - 360DEG  
 C Interval: 30.0DEG  
 Test Speed: HIGH  
 Temperature:25.3℃  
 Operators:  
 Test Date:2025-02-19

$\gamma$  Range: 0 - 180DEG  
 $\gamma$  Interval: 1.0DEG  
 Test System:EVERFINE GO-2000B\_V1 SYSTEM V2.00.488  
 Humidity:65.0%  
 Test Distance:6.360m [K=1.0000]  
 Remarks:

LUMINANCE LIMITATION CURVES

Test:U:24.00V I:0.3930A P:9.432W PF:1.000 Freq:0Hz Lamp Flux:662.955x1 lm		
NAME: SF18-24V-3528-120-3000K-80	TYPE:	WEIGHT:
SPEC.:	DIM.: Length=1m	SERIAL No.:
MFR.: OLympia lighting	SUR.:	Shielding Angle:



LUMINANCE cd/(m2)		
G (DEG)	C0/180	C90/270
85	50777	7131
80	28232	6620
75	21021	6533
70	17586	6566
65	15295	6650
60	13741	6759
55	12670	6876
50	11591	7009
45	10661	7150

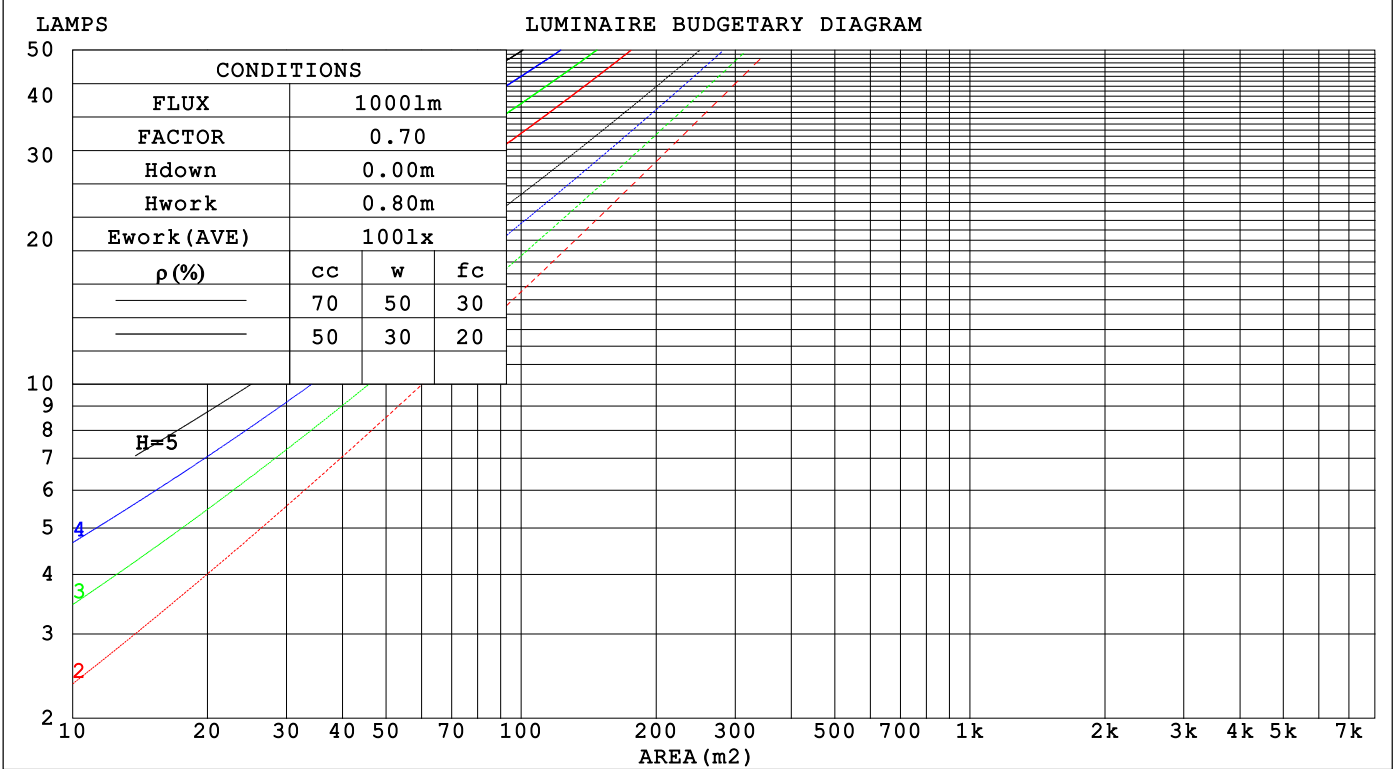
C Range: 0 - 360DEG  
C Interval: 30.0DEG  
Test Speed: HIGH  
Temperature:25.3℃  
Operators:  
Test Date:2025-02-19

γ Range: 0 - 180DEG  
γ Interval: 1.0DEG  
Test System:EVERFINE GO-2000B\_V1 SYSTEM V2.00.488  
Humidity:65.0%  
Test Distance:6.360m [K=1.0000]  
Remarks:

CU AND LUMINAIRE BUDGETARY ESTIMATE DIAGRAM

Test:U:24.00V I:0.3930A P:9.432W PF:1.000 Freq:0Hz																	
Lamp Flux:662.955x1 lm																	
NAME: SF18-24V-3528-120-3000K-80									TYPE:						WEIGHT:		
SPEC.:									DIM.: Length=1m						SERIAL No.:		
MFR.: OLYMPIA lighting									SUR.:						Shielding Angle:		

pcc	80%			70%			50%			30%			10%			0
pw	50%	30%	10%	50%	30%	10%	50%	30%	10%	50%	30%	10%	50%	30%	10%	0
pfc	20%			20%			20%			20%			20%			0
RCR	RCR:Room Cavity Ratio                      Coefficients of Utilization(CU)															
0.0	1.13	1.13	1.13	1.08	1.08	1.08	.97	.97	.97	.88	.88	.88	.79	.79	.79	.75
1.0	.94	.89	.85	.90	.85	.81	.81	.77	.74	.73	.70	.67	.65	.63	.61	.57
2.0	.81	.73	.67	.77	.70	.64	.69	.63	.59	.62	.58	.54	.56	.52	.49	.45
3.0	.70	.61	.54	.67	.58	.52	.60	.53	.48	.54	.48	.44	.48	.44	.40	.37
4.0	.61	.52	.45	.58	.50	.43	.53	.46	.40	.47	.42	.37	.42	.38	.34	.31
5.0	.54	.45	.38	.52	.43	.37	.47	.40	.34	.42	.36	.31	.38	.33	.29	.26
6.0	.49	.39	.33	.46	.38	.32	.42	.35	.29	.38	.32	.27	.34	.29	.25	.22
7.0	.44	.35	.29	.42	.33	.28	.38	.31	.26	.34	.28	.24	.31	.26	.22	.20
8.0	.40	.31	.25	.38	.30	.24	.35	.28	.23	.31	.25	.21	.28	.23	.20	.17
9.0	.36	.28	.22	.35	.27	.22	.32	.25	.20	.29	.23	.19	.26	.21	.18	.15
10.0	.33	.25	.20	.32	.24	.19	.29	.23	.18	.27	.21	.17	.24	.19	.16	.14



C Range: 0 - 360DEG  
C Interval: 30.0DEG  
Test Speed: HIGH  
Temperature:25.3℃  
Operators:  
Test Date:2025-02-19

γ Range: 0 - 180DEG  
γ Interval: 1.0DEG  
Test System:EVERFINE GO-2000B\_V1 SYSTEM V2.00.488  
Humidity:65.0%  
Test Distance:6.360m [K=1.0000]  
Remarks:

## WEC AND CCEC

Test:U:24.00V I:0.3930A P:9.432W PF:1.000 Freq:0Hz Lamp Flux:662.955x1 lm		
NAME: SF18-24V-3528-120-3000K-80	TYPE:	WEIGHT:
SPEC.:	DIM.: Length=1m	SERIAL No.:
MFR.: OLympia lighting	SUR.:	Shielding Angle:

pcc	80%			70%			50%			30%			10%			0														
pw	50%	30%	10%	50%	30%	10%	50%	30%	10%	50%	30%	10%	50%	30%	10%	0														
pfc	20%			20%			20%			20%			20%			0														
RCR	RCR:Room Cavity Ratio															Wall Exitance Coefficients(WEC)														
0.0																														
1.0	.376	.214	.068	.361	.206	.065	.333	.191	.061	.308	.178	.057	.284	.165	.053															
2.0	.327	.179	.055	.314	.173	.053	.289	.161	.050	.266	.149	.047	.244	.138	.044															
3.0	.291	.155	.046	.279	.150	.045	.257	.139	.042	.236	.129	.040	.216	.120	.037															
4.0	.263	.137	.040	.252	.132	.039	.231	.123	.037	.212	.114	.034	.194	.105	.032															
5.0	.239	.122	.035	.229	.118	.034	.210	.109	.032	.193	.102	.030	.176	.094	.028															
6.0	.219	.110	.031	.210	.106	.031	.193	.099	.029	.177	.092	.027	.162	.085	.025															
7.0	.202	.100	.028	.194	.097	.028	.178	.090	.026	.163	.084	.024	.149	.078	.023															
8.0	.188	.092	.026	.180	.089	.025	.165	.083	.024	.152	.077	.022	.139	.071	.021															
9.0	.175	.085	.024	.168	.082	.023	.154	.076	.022	.142	.071	.020	.130	.066	.019															
10.0	.164	.079	.022	.157	.076	.021	.145	.071	.020	.133	.066	.019	.122	.061	.018															

pcc	80%			70%			50%			30%			10%			0
pw	50%	30%	10%	50%	30%	10%	50%	30%	10%	50%	30%	10%	50%	30%	10%	0
pfc	20%			20%			20%			20%			20%			0
RCR	RCR:Room Cavity Ratio						Ceiling Cavity Exitance Coefficients (CCEC)									
0.0	.379	.379	.379	.324	.324	.324	.221	.221	.221	.127	.127	.127	.041	.041	.041	
1.0	.375	.346	.320	.321	.297	.275	.220	.204	.190	.126	.118	.111	.040	.038	.036	
2.0	.369	.323	.285	.316	.278	.247	.216	.193	.172	.125	.112	.101	.040	.036	.033	
3.0	.361	.307	.264	.310	.265	.229	.213	.184	.161	.123	.108	.095	.039	.035	.031	
4.0	.354	.295	.250	.304	.255	.217	.209	.178	.153	.121	.104	.090	.039	.034	.030	
5.0	.346	.285	.240	.297	.247	.209	.205	.172	.148	.119	.101	.088	.038	.033	.029	
6.0	.339	.277	.233	.291	.240	.203	.201	.168	.144	.117	.099	.085	.038	.032	.028	
7.0	.332	.271	.228	.286	.235	.199	.197	.165	.141	.115	.097	.084	.037	.032	.028	
8.0	.326	.265	.224	.280	.230	.195	.194	.162	.139	.113	.095	.083	.036	.031	.027	
9.0	.319	.261	.221	.275	.226	.193	.191	.159	.137	.111	.094	.082	.036	.031	.027	
10.0	.314	.257	.219	.270	.223	.191	.188	.157	.136	.109	.093	.081	.035	.030	.027	

C Range: 0 - 360DEG  
C Interval: 30.0DEG  
Test Speed: HIGH  
Temperature:25.3℃  
Operators:  
Test Date:2025-02-19

γ Range: 0 - 180DEG  
γ Interval: 1.0DEG  
Test System:EVERFINE GO-2000B\_V1 SYSTEM V2.00.488  
Humidity:65.0%  
Test Distance:6.360m [K=1.0000]  
Remarks:

UGR(Unified Glare Rating) Table

Test:U:24.00V I:0.3930A P:9.432W PF:1.000 Freq:0Hz Lamp Flux:662.955x1 lm										
NAME: SF18-24V-3528-120-3000K-80					TYPE:			WEIGHT:		
SPEC.:					DIM.: Length=1m			SERIAL No.:		
MFR.: OLympia lighting					SUR.:			Shielding Angle:		
ceiling/cavity	0.7	0.7	0.5	0.5	0.3	0.7	0.7	0.5	0.5	0.3
walls	0.5	0.3	0.5	0.3	0.3	0.5	0.3	0.5	0.3	0.3
working plane	0.2	0.2	0.2	0.2	0.2	0.2	0.2	0.2	0.2	0.2
Room dimensions	Viewed crosswise					Viewed endwise				
x = 2H y = 2H	21.2	22.5	21.8	23.1	23.7	18.2	19.5	18.8	20.1	20.8
3H	23.9	25.1	24.5	25.7	26.5	19.8	21.0	20.5	21.7	22.4
4H	25.4	26.5	26.0	27.1	27.9	20.6	21.7	21.2	22.4	23.1
6H	26.9	28.0	27.6	28.6	29.4	21.2	22.3	21.9	23.0	23.7
8H	27.8	28.8	28.4	29.5	30.2	21.5	22.5	22.2	23.2	24.0
12H	28.7	29.7	29.4	30.4	31.2	21.7	22.7	22.4	23.3	24.1
4H 2H	21.6	22.8	22.3	23.4	24.2	19.5	20.6	20.2	21.3	22.0
3H	24.7	25.6	25.3	26.3	27.1	21.4	22.4	22.1	23.1	23.9
4H	26.3	27.2	27.0	27.9	28.7	22.3	23.2	23.0	23.9	24.7
6H	28.1	28.9	28.8	29.6	30.5	23.1	23.9	23.8	24.7	25.5
8H	29.0	29.8	29.8	30.5	31.4	23.5	24.2	24.2	24.9	25.8
12H	30.2	30.8	30.9	31.6	32.5	23.7	24.4	24.5	25.2	26.1
8H 4H	26.6	27.3	27.3	28.1	29.0	23.5	24.2	24.2	24.9	25.8
6H	28.7	29.3	29.4	30.1	31.0	24.6	25.2	25.4	26.0	26.9
8H	29.8	30.4	30.6	31.2	32.1	25.1	25.7	25.9	26.5	27.4
12H	31.2	31.7	32.0	32.5	33.5	25.6	26.1	26.4	26.9	27.8
12H 4H	26.6	27.3	27.4	28.1	29.0	23.8	24.5	24.6	25.3	26.2
6H	28.8	29.3	29.5	30.1	31.1	25.2	25.7	25.9	26.5	27.5
8H	30.0	30.5	30.8	31.3	32.3	25.8	26.3	26.6	27.1	28.1
Variations with the observer position at spacings(CIE Pub.117):										
S = 1.0H	+ 0.1 / - 0.1					+ 0.1 / - 0.1				
1.5H	+ 0.2 / - 0.2					+ 0.2 / - 0.3				
2.0H	+ 0.2 / - 0.3					+ 0.2 / - 0.4				

CIE Pub.117, 663.0 lm Total Lamp Luminous Flux Correct (8log(F/F0) = -1.4)  
Area: 0.016 m2

C Range: 0 - 360DEG  
C Interval: 30.0DEG  
Test Speed: HIGH  
Temperature:25.3℃  
Operators:  
Test Date:2025-02-19

γ Range: 0 - 180DEG  
γ Interval: 1.0DEG  
Test System:EVERFINE GO-2000B\_V1 SYSTEM V2.00.488  
Humidity:65.0%  
Test Distance:6.360m [K=1.0000]  
Remarks:

## UTILIZATION FACTORS TABLE

Test:U:24.00V I:0.3930A P:9.432W PF:1.000 Freq:0Hz Lamp Flux:662.955x1 lm		
NAME: SF18-24V-3528-120-3000K-80	TYPE:	WEIGHT:
SPEC.:	DIM.: Length=1m	SERIAL No.:
MFR.: OLympia lighting	SUR.:	Shielding Angle:

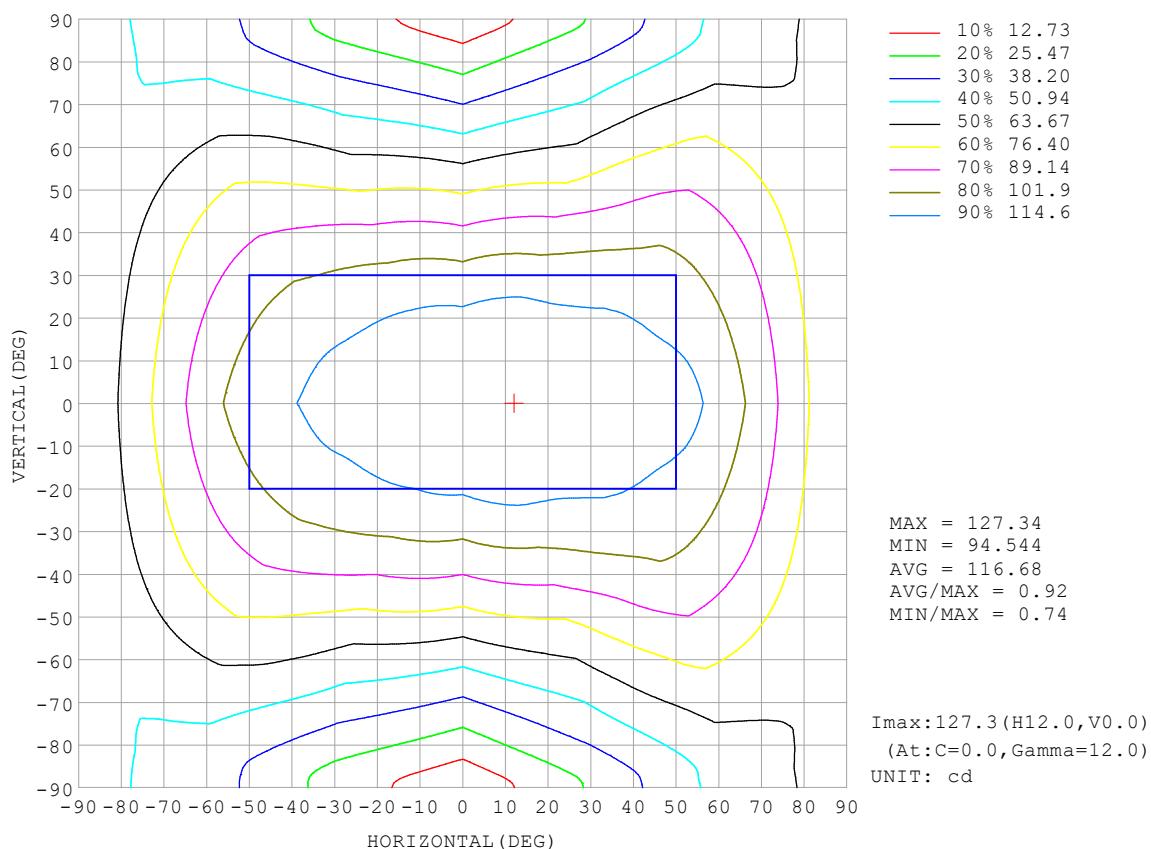
REFLECTANCE										
Ceiling	0.8	0.8	0.8	0.7	0.7	0.7	0.5	0.5	0.5	0
Walls	0.7	0.5	0.3	0.7	0.5	0.3	0.7	0.5	0.3	0
Working plane	0.2	0.2	0.2	0.2	0.2	0.2	0.2	0.2	0.2	0
ROOM INDEX	UTILIZATION FACTORS (PERCENT) $k(RI) \times RCR = 5$									
$k = 0.60$	46	33	26	44	33	26	42	32	25	18
0.80	55	42	34	53	41	33	50	39	32	24
1.00	63	49	41	60	48	40	56	48	39	30
1.25	69	57	48	67	55	47	62	52	45	35
1.50	75	62	54	72	60	52	66	57	50	38
2.00	82	71	62	78	68	61	72	64	57	44
2.50	87	76	68	83	73	66	76	68	62	48
3.00	90	81	74	86	78	71	79	72	66	51
4.00	95	87	81	91	84	78	82	77	72	56
5.00	98	91	85	94	87	82	85	80	76	58
ROOM INDEX	UF (total)									Direct
According to DIN EN 13032-2 2004			Suspended					SHRNOM = 1.25		

C Range: 0 - 360DEG  
 C Interval: 30.0DEG  
 Test Speed: HIGH  
 Temperature: 25.3 °C  
 Operators:  
 Test Date: 2025-02-19

γ Range: 0 - 180DEG  
 γ Interval: 1.0DEG  
 Test System: EVERFINE GO-2000B\_V1 SYSTEM V2.00.488  
 Humidity: 65.0%  
 Test Distance: 6.360m [K=1.0000]  
 Remarks:

## ISOCANDELA DIAGRAM

Test:U:24.00V I:0.3930A P:9.432W PF:1.000 Freq:0Hz Lamp Flux:662.955x1 lm		
NAME: SF18-24V-3528-120-3000K-80	TYPE:	WEIGHT:
SPEC.:	DIM.: Length=1m	SERIAL No.:
MFR.: OLympia lighting	SUR.:	Shielding Angle:



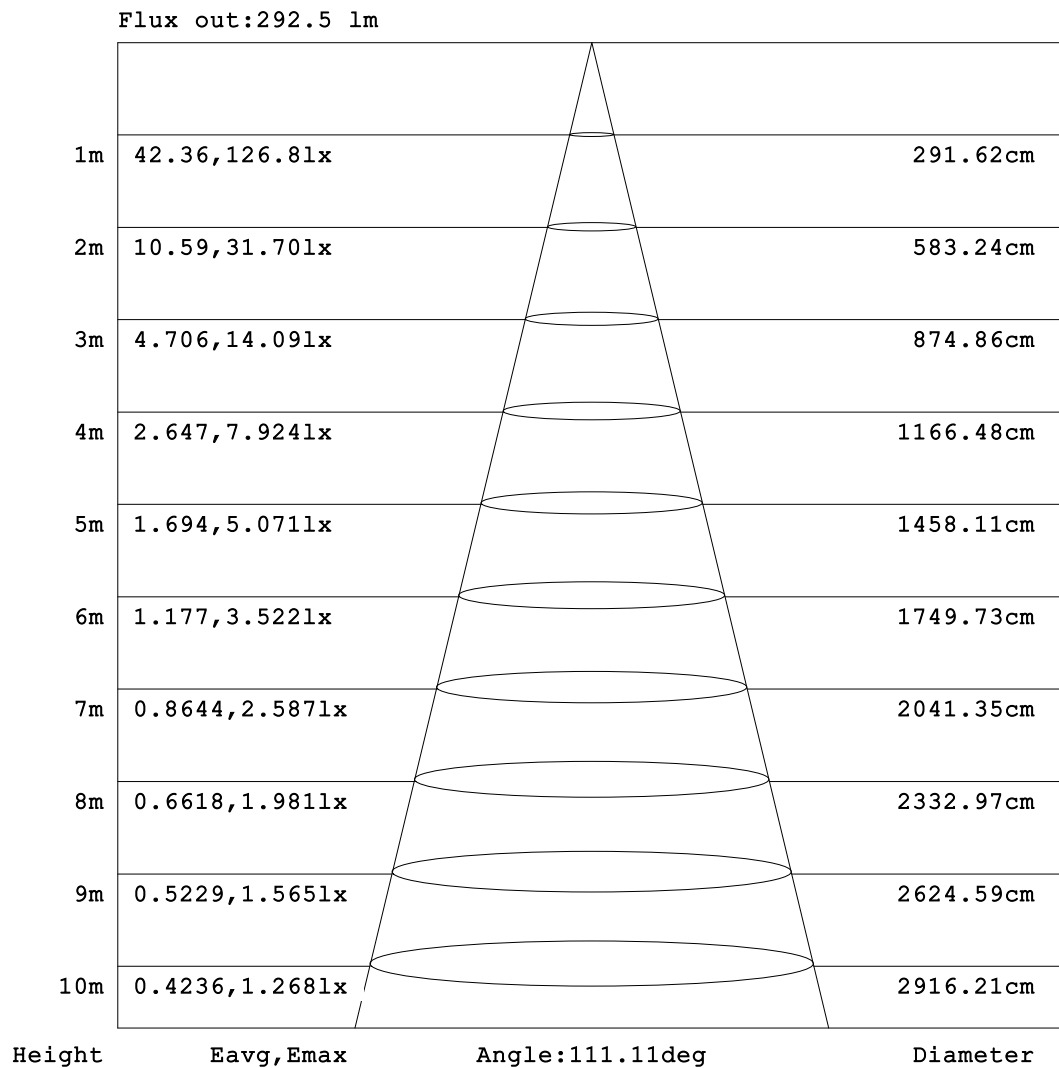
C Range: 0 - 360DEG  
C Interval: 30.0DEG  
Test Speed: HIGH  
Temperature:25.3℃  
Operators:  
Test Date:2025-02-19

γ Range: 0 - 180DEG  
γ Interval: 1.0DEG  
Test System:EVERFINE GO-2000B\_V1 SYSTEM V2.00.488  
Humidity:65.0%  
Test Distance:6.360m [K=1.0000]  
Remarks:



## AAI Figure

Test:U:24.00V I:0.3930A P:9.432W PF:1.000 Freq:0Hz Lamp Flux:662.955x1 lm		
NAME: SF18-24V-3528-120-3000K-80	TYPE:	WEIGHT:
SPEC.:	DIM.: Length=1m	SERIAL No.:
MFR.: OLympia lighting	SUR.:	Shielding Angle:



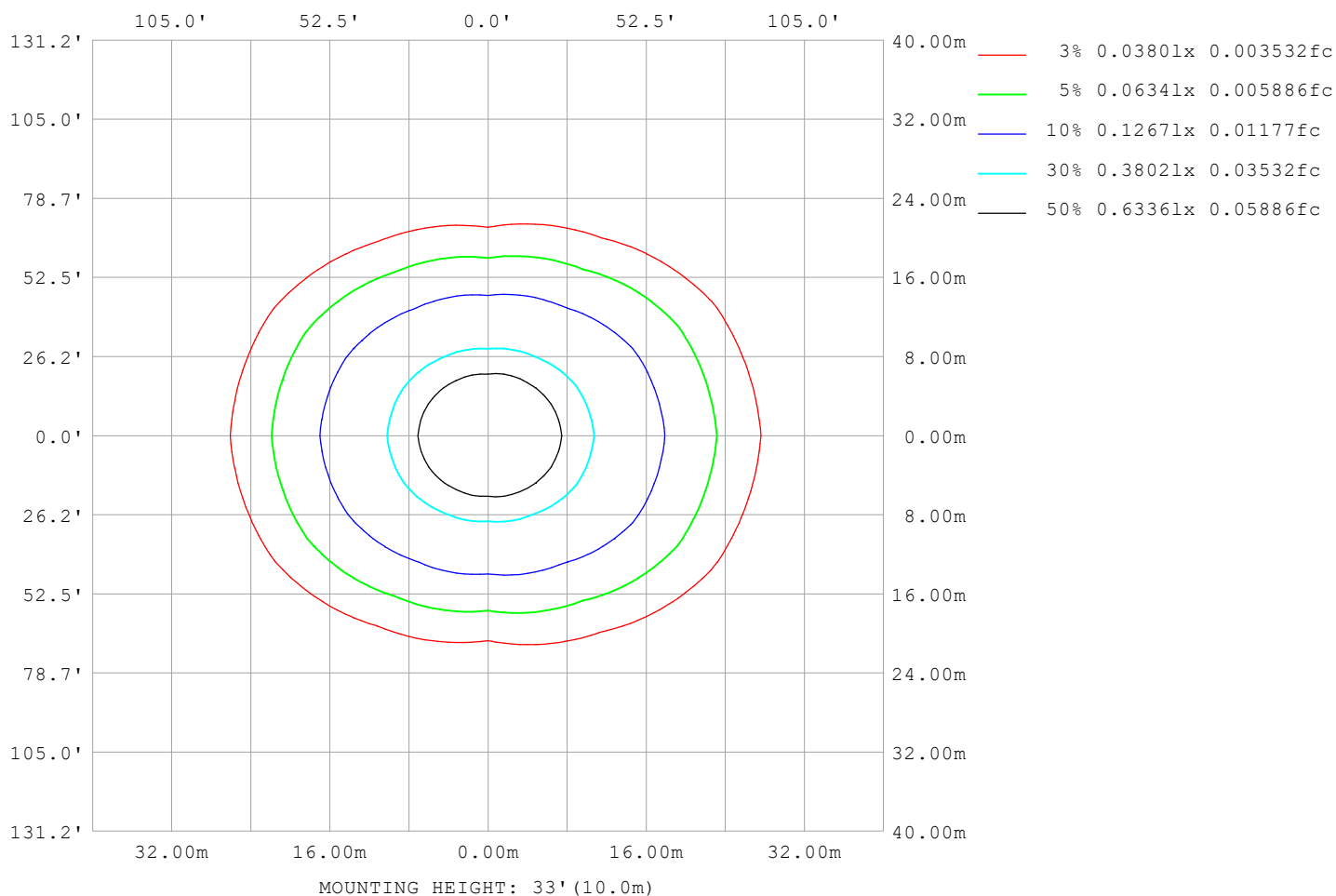
Note:The Curves indicate the illuminated area and the average illumination when the luminaire is at different distance.

C Range: 0 - 360DEG  
C Interval: 30.0DEG  
Test Speed: HIGH  
Temperature:25.3℃  
Operators:  
Test Date:2025-02-19

γ Range: 0 - 180DEG  
γ Interval: 1.0DEG  
Test System:EVERFINE GO-2000B\_V1 SYSTEM V2.00.488  
Humidity:65.0%  
Test Distance:6.360m [K=1.0000]  
Remarks:

## ISOLUX DIAGRAM

Test:U:24.00V I:0.3930A P:9.432W PF:1.000 Freq:0Hz Lamp Flux:662.955x1 lm		
NAME: SF18-24V-3528-120-3000K-80	TYPE:	WEIGHT:
SPEC.:	DIM.: Length=1m	SERIAL No.:
MFR.: OLympia lighting	SUR.:	Shielding Angle:



C Range: 0 - 360DEG  
C Interval: 30.0DEG  
Test Speed: HIGH  
Temperature: 25.3°C  
Operators:  
Test Date: 2025-02-19

γ Range: 0 - 180DEG  
γ Interval: 1.0DEG  
Test System: EVERFINE GO-2000B\_V1 SYSTEM V2.00.488  
Humidity: 65.0%  
Test Distance: 6.360m [K=1.0000]  
Remarks:

## LED Avg.L Report

Test:U:24.00V I:0.3930A P:9.432W PF:1.000 Freq:0Hz Lamp Flux:662.955x1 lm		
NAME: SF18-24V-3528-120-3000K-80	TYPE:	WEIGHT:
SPEC.:	DIM.: Length=1m	SERIAL No.:
MFR.: OLympia lighting	SUR.:	Shielding Angle:

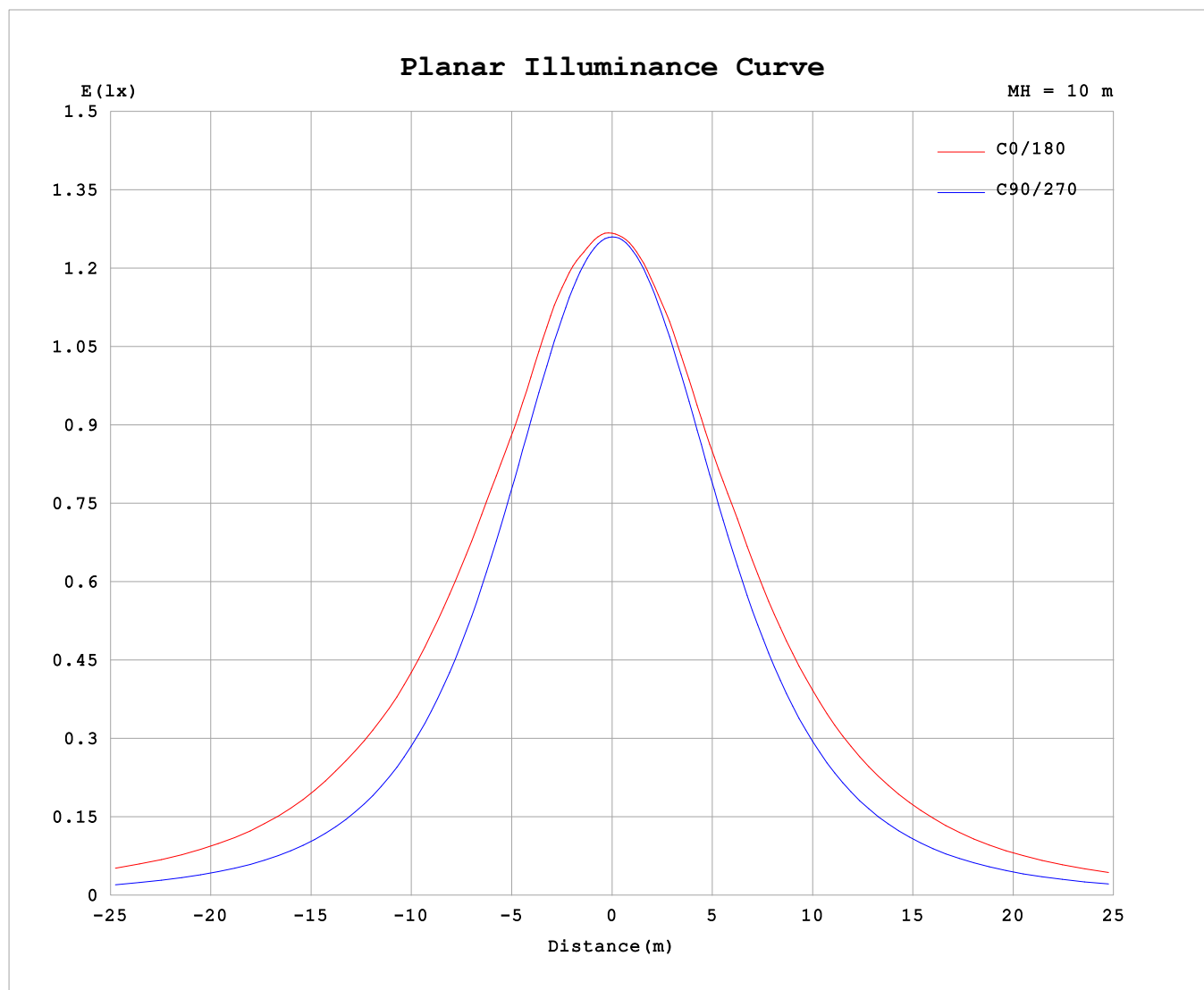
AvgL	cd/m2
L_0~180 (65) av	14168
L_0~180 (75) av	19264
L_0~180 (85) av	45644
L_90~270 (65) av	6845
L_90~270 (75) av	6794
L_90~270 (85) av	7686
L_45 (65) av	10841
L_45 (75) av	14066
L_45 (85) av	29763

Standard: GB/T 29293-2012

C Range: 0 - 360DEG  
C Interval: 30.0DEG  
Test Speed: HIGH  
Temperature:25.3℃  
Operators:  
Test Date:2025-02-19

γ Range: 0 - 180DEG  
γ Interval: 1.0DEG  
Test System:EVERFINE GO-2000B\_V1 SYSTEM V2.00.488  
Humidity:65.0%  
Test Distance:6.360m [K=1.0000]  
Remarks:

## Planar Illuminance Curve



C Range: 0 - 360DEG  
C Interval: 30.0DEG  
Test Speed: HIGH  
Temperature: 25.3 °C  
Operators:  
Test Date: 2025-02-19

$\gamma$  Range: 0 - 180DEG  
 $\gamma$  Interval: 1.0DEG  
Test System: EVERFINE GO-2000B\_V1 SYSTEM V2.00.488  
Humidity: 65.0%  
Test Distance: 6.360m [K=1.0000]  
Remarks:

## LUMINOUS DISTRIBUTION INTENSITY DATA

Test:U:24.00V I:0.3930A P:9.432W PF:1.000 Freq:0Hz Lamp Flux:662.955x1 lm		
NAME: SF18-24V-3528-120-3000K-80	TYPE:	WEIGHT:
SPEC.:	DIM.: Length=1m	SERIAL No.:
MFR.: OLYMPIA lighting	SUR.:	Shielding Angle:

Table--1

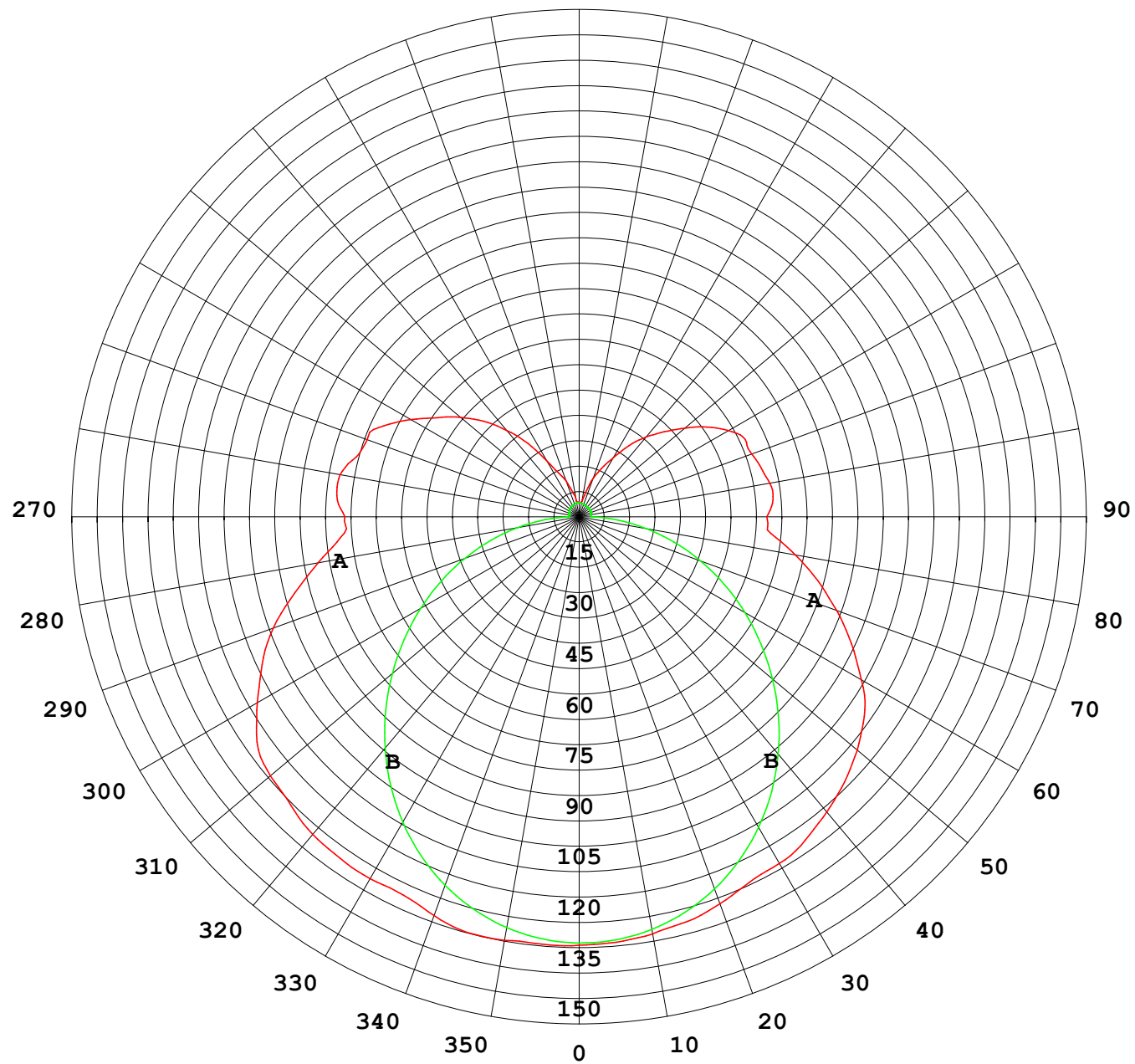
UNIT: cd

C (DEG) γ (DEG)	0	30	60	90	120	150	180	210	240	270	300	330							
0	126	126	126	126	126	126	126	126	126	126	126	126							
5	126	126	126	126	125	126	126	126	126	126	126	126							
10	127	126	125	124	124	124	125	125	124	124	125	126							
15	127	126	122	120	121	122	123	123	122	121	123	126							
20	125	124	120	116	117	120	121	121	118	117	120	124							
25	123	121	116	111	113	117	119	117	114	112	118	121							
30	123	118	112	105	108	114	118	114	110	106	113	118							
35	123	116	105	97.3	102	111	116	112	104	99.4	107	117							
40	122	114	98.5	89.4	95.5	107	114	108	97.6	91.8	100	114							
45	120	111	91.4	81.0	88.1	103	111	104	90.4	83.5	93.3	112							
50	119	107	83.7	72.2	80.2	98.1	107	99.2	82.8	74.8	85.7	108							
55	116	103	75.6	63.2	71.7	92.3	103	93.6	74.1	65.8	77.4	103							
60	110	98.4	68.1	54.2	63.8	86.0	96.1	87.2	66.4	56.7	69.6	98.8							
65	103	92.0	61.2	45.1	56.5	79.6	88.5	80.9	59.0	47.5	62.7	92.5							
70	95.9	84.6	54.3	36.0	48.9	72.3	80.7	73.6	51.3	38.3	55.6	85.3							
75	86.7	76.6	47.4	27.1	41.1	63.3	72.8	64.4	43.5	29.2	48.4	77.4							
80	78.2	67.4	40.1	18.4	33.0	54.9	64.7	55.6	35.3	20.2	41.0	67.8							
85	70.6	58.8	32.0	9.96	24.9	46.8	56.7	47.3	26.7	11.5	32.8	58.9							
90	69.0	54.7	26.8	3.16	20.5	44.4	55.3	44.0	21.0	3.81	26.5	54.3							
95	71.7	56.9	26.8	3.13	21.1	46.5	57.4	45.1	21.0	3.53	26.3	56.1							
100	71.5	59.1	21.6	3.11	21.1	48.6	57.1	46.9	21.1	3.62	22.7	58.5							
105	68.0	56.0	19.7	3.11	21.1	49.2	55.6	46.8	21.8	3.74	20.0	55.4							
110	66.5	53.5	19.8	3.18	21.0	48.7	54.2	47.1	22.1	3.80	20.8	50.5							
115	63.5	48.4	20.1	3.29	21.0	45.5	54.0	45.3	22.3	3.83	20.9	43.8							
120	57.3	43.4	16.0	3.42	19.7	41.4	50.8	41.5	20.8	3.83	19.1	42.5							
125	50.9	40.2	11.1	3.52	18.0	37.2	46.2	37.3	19.0	3.83	16.1	39.1							
130	45.6	36.2	10.4	3.66	15.7	33.3	40.7	33.6	16.5	3.83	14.0	35.2							
135	39.9	28.2	9.08	3.76	13.5	29.1	35.5	29.6	14.3	3.83	11.7	28.8							
140	33.2	20.8	7.26	3.82	11.6	24.9	30.7	25.4	12.3	3.83	9.67	22.4							
145	26.4	13.2	6.35	3.86	10.1	20.2	25.5	20.8	10.6	3.83	7.83	17.4							
150	18.9	10.4	5.71	3.87	8.18	16.3	20.1	16.7	8.53	3.83	6.41	13.3							
155	14.1	8.33	5.50	3.96	6.54	13.4	15.8	13.6	6.60	3.92	5.58	9.67							
160	11.2	6.12	5.34	4.06	5.22	9.91	12.1	10.0	5.22	3.96	5.32	7.25							
165	7.73	5.08	4.90	4.14	4.67	6.68	7.27	6.52	4.50	4.02	4.83	5.57							
170	4.66	4.76	4.68	4.20	4.42	4.93	4.60	4.83	4.26	4.08	4.65	4.96							
175	4.31	4.62	4.65	4.24	4.26	4.40	4.19	4.34	4.13	4.16	4.65	4.68							
180	4.12	4.22	4.23	4.23	4.28	4.30	4.09	4.21	4.22	4.23	4.29	4.31							

C Range: 0 - 360DEG  
C Interval: 30.0DEG  
Test Speed: HIGH  
Temperature:25.3℃  
Operators:  
Test Date:2025-02-19

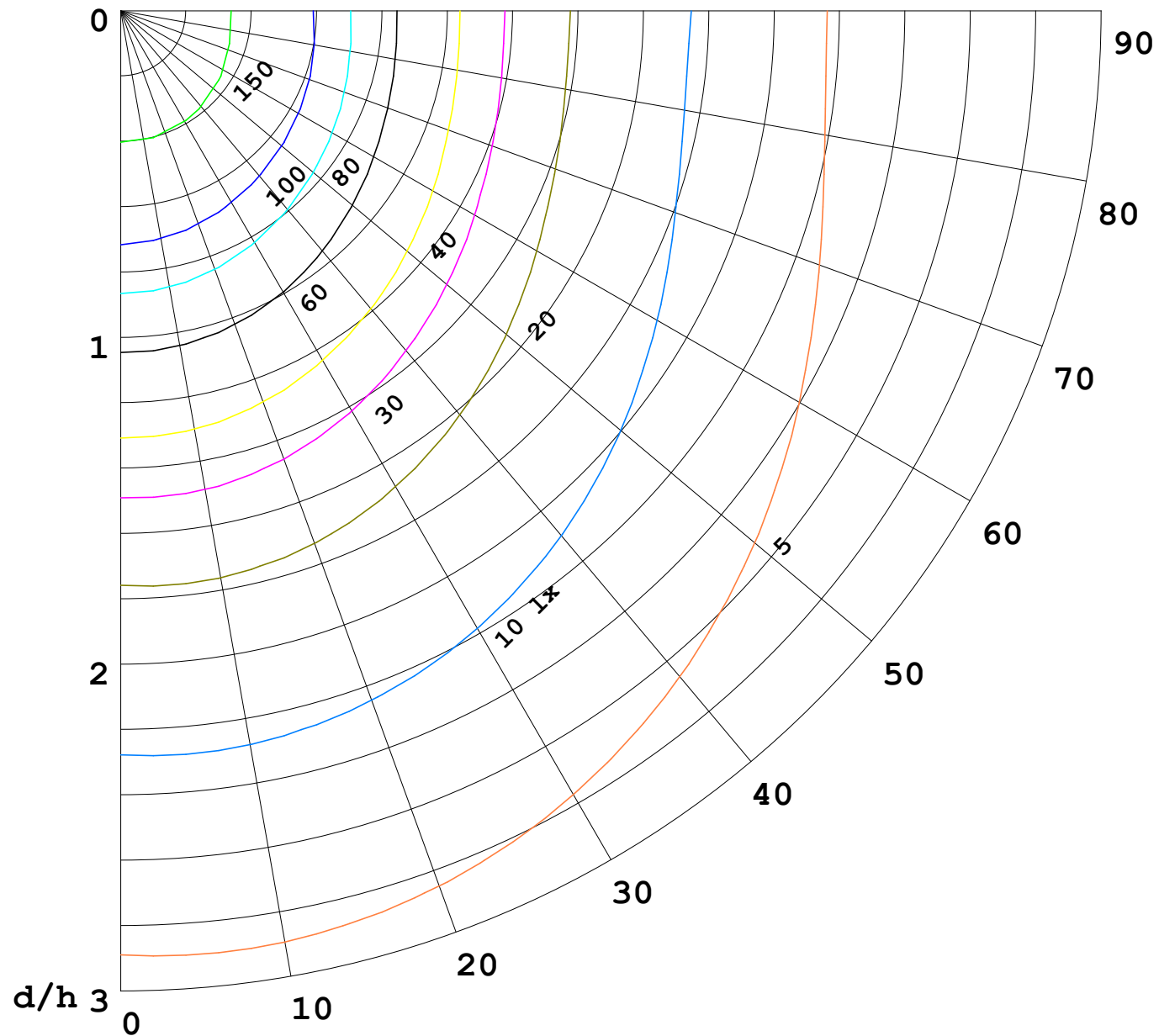
γ Range: 0 - 180DEG  
γ Interval: 1.0DEG  
Test System:EVERFINE GO-2000B\_V1 SYSTEM V2.00.488  
Humidity:65.0%  
Test Distance:6.360m [K=1.0000]  
Remarks:

I (cd)



1000 lm

$\kappa = 1$



F = 1000 lm  
 K = 0.7  
 Hcc = 0.8 m  
 Hfc = 0.0 m  
 Eave = 100 lx

	Pcc	Pw	Pfc
—————	70	50	30
—————	50	30	20

