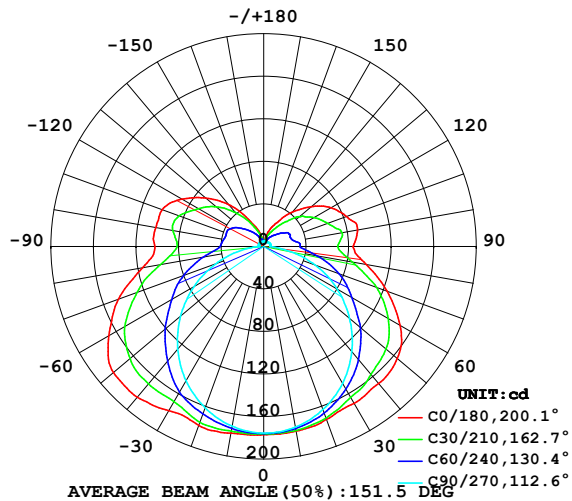


LUMINAIRE PHOTOMETRIC TEST REPORT

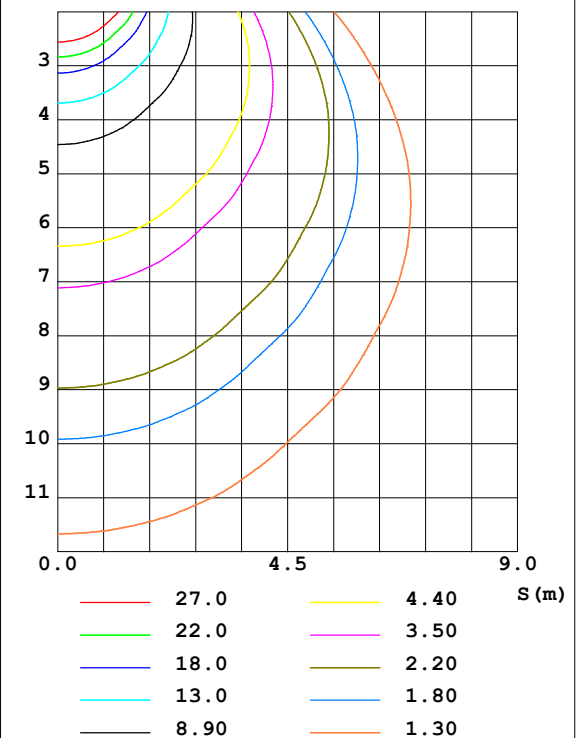
Test:U:24.00V I:0.6446A P:15.47W PF:1.000 Lamp Flux:977.005x1 lm		
NAME: F18-24V-5050-84-3000K	TYPE: 硅胶	WEIGHT:
DIM.: 16.5mm*16.5mm	SPEC.:	SERIAL No.: 20220714
MFR.: OLYMPIA	SUR.: 1*0.0165	PROTECTION ANGLE:

DATA OF LAMP		PHOTOMETRIC DATA Eff: 63.15 lm/W			
MODEL	5050	I _{max} (cd)	185.5	S/MH (C0/180)	1.47
NOMINAL POWER (W)	15	LOR (%)	100.0	S/MH (C90/270)	1.26
RATED VOLTAGE (V)	24	TOTAL FLUX (lm)	977.00	η UP, DN (C0-180)	12.5, 37.1
NOMINAL FLUX (lm)	977.005	CIE CLASS	SEMI-D.	η UP, DN (C180-360)	12.9, 37.5
LAMPS INSIDE	1	η up (%)	25.4	CIBSE SHR NOM	1.50
TEST VOLTAGE (V)	24.0	η down (%)	74.6	CIBSE SHR MAX	1.55

LUMINOUS INTENSITY DISTRIBUTION DIAGRAM



C0 PLANE ISOLUX DIAGRAM (UNIT: lx)



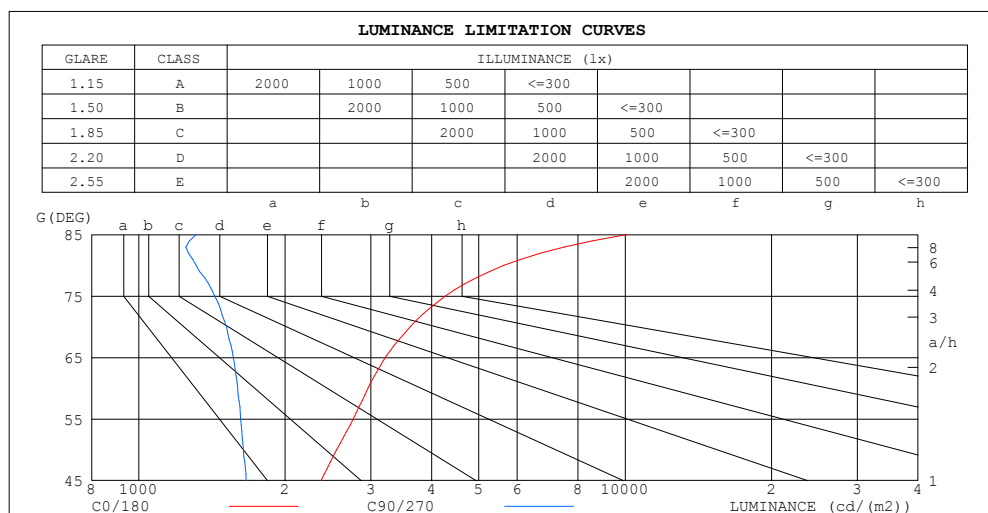
C Range: 0 - 360DEG
C Interval: 30.0DEG
Test Speed: HIGH
Temperature: 25.3DEG
Operators: HXJ
Test Date: 2022-07-14

γ Range: 0 - 180DEG
γ Interval: 1.0DEG
Test System: EVERFINE GO-2000B_V1 SYSTEM V2.0.269
Humidity: 65.0%
Test Distance: 9.200m [K=1.0000]
Remarks:

ZONAL FLUX DIAGRAM
AND LUMINANCE LIMITATION CURVES

ZONAL FLUX DIAGRAM:

γ	C0	C45	C90	C135	C180	C225	C270	C315	γ	Φ zone	Φ total	%lum, lamp
10	176.5	174.7	172.5	174.5	178.3	175.1	171.6	173.1	0- 10	16.72	16.72	1.71,1.71
20	173.1	169.2	163.2	171.8	178.9	171.7	161.4	167.0	10- 20	48.81	65.53	6.71,6.71
30	170.3	159.3	148.6	164.0	178.4	163.4	146.0	156.7	20- 30	76.35	141.9	14.5,14.5
40	168.4	147.9	128.9	155.5	185.1	154.6	125.9	145.1	30- 40	98.10	240.0	24.6,24.6
50	164.1	134.5	105.5	144.0	184.5	142.5	102.2	131.3	40- 50	112.3	352.3	36.1,36.1
60	148.1	115.4	79.86	127.1	168.1	125.4	75.80	112.1	50- 60	115.8	468.1	47.9,47.9
70	123.6	94.40	51.78	105.1	145.4	103.5	47.90	91.36	60- 70	107.2	575.3	58.9,58.9
80	97.88	67.75	22.79	78.70	115.6	78.13	21.17	65.84	70- 80	87.89	663.2	67.9,67.9
90	84.16	52.02	6.087	62.25	102.4	61.17	4.772	50.22	80- 90	65.44	728.6	74.6,74.6
100	89.67	52.40	6.261	63.26	103.2	62.63	5.121	49.55	90-100	59.80	788.5	80.7,80.7
110	82.87	45.29	6.286	61.61	101.6	61.03	5.322	44.27	100-110	56.59	845.0	86.5,86.5
120	73.05	40.31	6.197	53.06	89.04	52.80	5.418	39.94	110-120	48.66	893.7	91.5,91.5
130	58.40	31.44	5.930	42.55	71.04	42.38	5.346	31.49	120-130	36.90	930.6	95.3,95.3
140	42.78	21.31	5.287	30.74	51.62	30.17	5.324	20.26	130-140	24.18	954.8	97.7,97.7
150	27.09	13.23	4.854	19.47	30.37	19.28	5.197	12.91	140-150	13.30	968.1	99.1,99.1
160	17.00	8.126	4.825	11.45	17.75	11.25	5.051	7.847	150-160	6.128	974.2	99.7,99.7
170	5.939	5.447	4.945	6.786	6.043	6.588	4.896	5.330	160-170	2.265	976.5	99.9,99.9
180	4.880	5.119	5.041	5.179	4.895	5.151	4.991	5.139	170-180	0.5231	977.0	100,100
DEG	LUMINOUS INTENSITY:cd									UNIT:lm		



LUMINANCE cd/(m2)		
G (DEG)	C0/180	C90/270
85	10062	1311
80	5637	1313
75	4271	1433
70	3615	1514
65	3214	1565
60	2962	1597
55	2760	1618
50	2553	1642
45	2367	1663

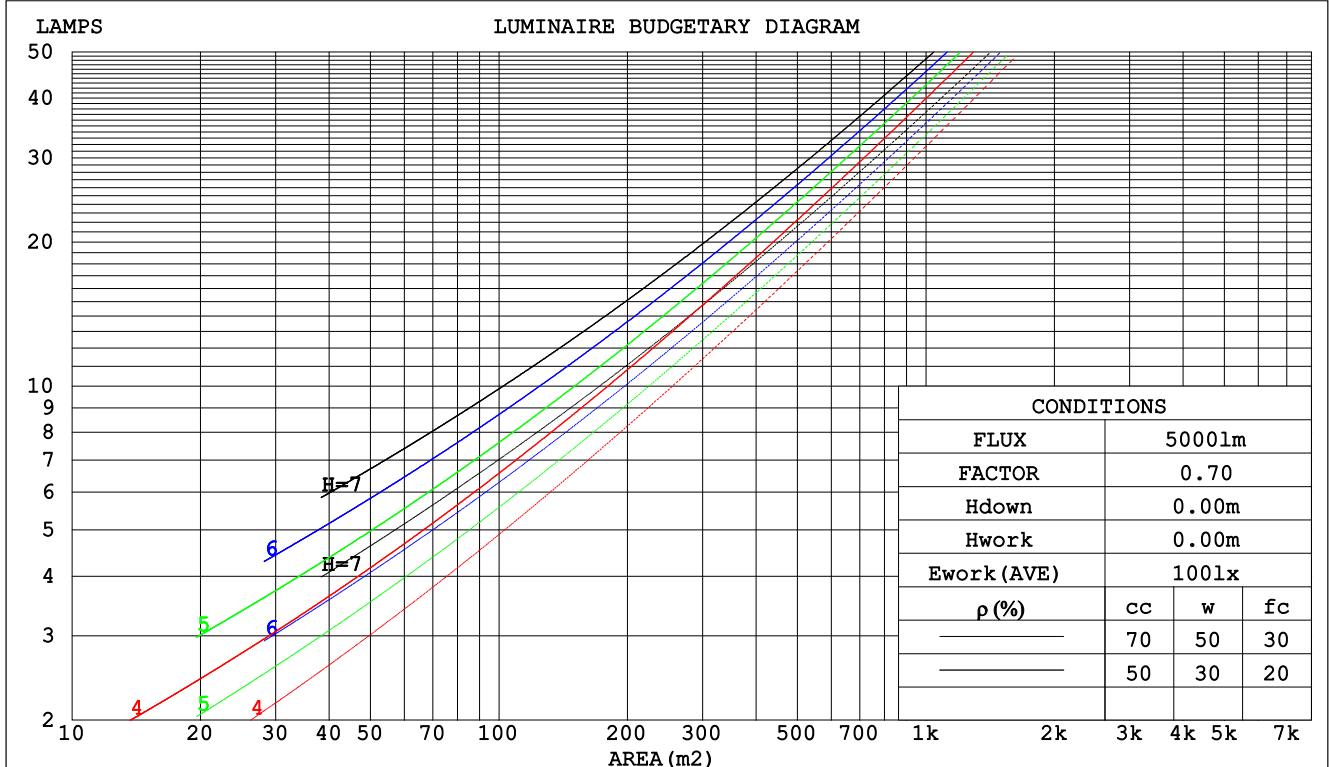
C Range: 0 - 360DEG
C Interval: 30.0DEG
Test Speed: HIGH
Temperature:25.3DEG
Operators:HXJ
Test Date:2022-07-14

γ Range: 0 - 180DEG
 γ Interval: 1.0DEG
Test System:EVERFINE GO-2000B_V1 SYSTEM V2.0.269
Humidity:65.0%
Test Distance:9.200m [K=1.0000]
Remarks:

CU AND LUMINAIRE BUDGETARY ESTIMATE DIAGRAM

Test:U:24.00V I:0.6446A P:15.47W PF:1.000 Lamp Flux:977.005x1 lm		
NAME: F18-24V-5050-84-3000K	TYPE: 硅胶	WEIGHT:
DIM.: 16.5mm*16.5mm	SPEC.:	SERIAL No.:20220714
MFR.: OLYMPIA	SUR.:1*0.0165	PROTECTION ANGLE:

ρ_{cc}	80%			70%			50%			30%			10%			0
ρ_w	50%	30%	10%	50%	30%	10%	50%	30%	10%	50%	30%	10%	50%	30%	10%	0
ρ_{fc}	20%			20%			20%			20%			20%			0
RCR	RCR:Room Cavity Ratio															



C Range: 0 - 360DEG
C Interval: 30.0DEG
Test Speed: HIGH
Temperature:25.3DEG
Operators:HXJ
Test Date:2022-07-14

γ Range: 0 - 180DEG
 γ Interval: 1.0DEG
Test System:EVERFINE GO-2000B_V1 SYSTEM V2.0.269
Humidity:65.0%
Test Distance:9.200m [K=1.0000]
Remarks:

WEC AND CCEC

Test:U:24.00V I:0.6446A P:15.47W PF:1.000 Lamp Flux:977.005x1 lm		
NAME: F18-24V-5050-84-3000K	TYPE: 硅胶	WEIGHT:
DIM.: 16.5mm*16.5mm	SPEC.:	SERIAL No.:20220714
MFR.: OLYMPIA	SUR.:1*0.0165	PROTECTION ANGLE:

pcc	80%			70%			50%			30%			10%			0	
pw	50%	30%	10%	50%	30%	10%	50%	30%	10%	50%	30%	10%	50%	30%	10%	0	
pfc	20%			20%			20%			20%			20%			0	
RCR	RCR:Room Cavity Ratio						Wall Exitance Coefficients(WEC)										
0.0																	
1.0	.377	.214	.068	.362	.207	.066	.334	.192	.061	.309	.178	.057	.285	.165	.053		
2.0	.328	.180	.055	.315	.173	.053	.290	.161	.050	.266	.149	.047	.244	.138	.044		
3.0	.293	.156	.047	.280	.150	.045	.257	.139	.042	.236	.129	.040	.216	.120	.037		
4.0	.264	.137	.040	.253	.132	.039	.232	.123	.037	.212	.114	.034	.194	.105	.032		
5.0	.240	.122	.035	.230	.118	.034	.211	.110	.032	.193	.102	.030	.176	.094	.028		
6.0	.220	.110	.032	.211	.106	.031	.193	.099	.029	.177	.092	.027	.161	.085	.025		
7.0	.203	.100	.028	.194	.097	.028	.178	.090	.026	.163	.084	.024	.149	.077	.023		
8.0	.188	.092	.026	.180	.089	.025	.166	.083	.024	.152	.077	.022	.138	.071	.021		
9.0	.175	.085	.024	.168	.082	.023	.154	.076	.022	.142	.071	.020	.129	.066	.019		
10.0	.164	.079	.022	.158	.076	.021	.145	.071	.020	.133	.066	.019	.121	.061	.018		

pcc	80%			70%			50%			30%			10%			0
pw	50%	30%	10%	50%	30%	10%	50%	30%	10%	50%	30%	10%	50%	30%	10%	0
pfc	20%			20%			20%			20%			20%			0
RCR	RCR:Room Cavity Ratio						Ceiling Cavity Exitance Coefficients(CCEC)									
0.0	.384	.384	.384	.328	.328	.328	.224	.224	.224	.129	.129	.129	.041	.041	.041	
1.0	.380	.351	.324	.325	.301	.279	.223	.207	.193	.128	.120	.112	.041	.039	.036	
2.0	.374	.328	.290	.320	.283	.251	.219	.196	.175	.126	.114	.103	.041	.037	.033	
3.0	.366	.312	.269	.314	.269	.233	.216	.187	.163	.125	.109	.096	.040	.035	.032	
4.0	.359	.300	.255	.308	.259	.221	.212	.181	.156	.123	.106	.092	.039	.034	.030	
5.0	.351	.290	.245	.302	.251	.213	.208	.175	.150	.120	.103	.089	.039	.034	.029	
6.0	.344	.282	.238	.296	.245	.207	.204	.171	.147	.118	.101	.087	.038	.033	.029	
7.0	.337	.276	.233	.290	.239	.203	.200	.168	.144	.116	.099	.086	.038	.032	.028	
8.0	.331	.270	.229	.285	.235	.200	.197	.165	.142	.115	.097	.084	.037	.032	.028	
9.0	.325	.266	.226	.280	.231	.197	.194	.162	.140	.113	.096	.083	.037	.031	.028	
10.0	.319	.262	.224	.275	.227	.195	.191	.160	.139	.111	.095	.083	.036	.031	.027	

C Range: 0 - 360DEG
 C Interval: 30.0DEG
 Test Speed: HIGH
 Temperature:25.3DEG
 Operators:HXJ
 Test Date:2022-07-14

γ Range: 0 - 180DEG
 γ Interval: 1.0DEG
 Test System:EVERFINE GO-2000B_V1 SYSTEM V2.0.269
 Humidity:65.0%
 Test Distance:9.200m [K=1.0000]
 Remarks:

Uncorrected UGR Table

Test:U:24.00V I:0.6446A P:15.47W PF:1.000 Lamp Flux:977.005x1 lm											
NAME: F18-24V-5050-84-3000K						TYPE:硅胶			WEIGHT:		
DIM.: 16.5mm*16.5mm						SPEC.:			SERIAL No.:20220714		
MFR.: OLYMPIA						SUR.:1*0.0165			PROTECTION ANGLE:		
ceiling/cavity	0.7	0.7	0.5	0.5	0.3	0.7	0.7	0.5	0.5	0.3	
walls	0.5	0.3	0.5	0.3	0.3	0.5	0.3	0.5	0.3	0.3	
working plane	0.2	0.2	0.2	0.2	0.2	0.2	0.2	0.2	0.2	0.2	
Room dimensions		Viewed crosswise					Viewed endwise				
x = 2H y = 2H	15.3	16.6	15.9	17.2	17.9	12.6	13.9	13.2	14.5	15.2	
	3H	17.9	19.0	18.5	19.7	20.4	14.3	15.5	14.9	16.1	16.8
	4H	19.2	20.3	19.8	21.0	21.7	15.0	16.1	15.6	16.7	17.5
	6H	20.6	21.7	21.3	22.4	23.1	15.5	16.5	16.1	17.2	18.0
	8H	21.4	22.4	22.1	23.1	23.9	15.6	16.7	16.3	17.3	18.1
	12H	22.3	23.3	23.0	24.0	24.8	15.8	16.7	16.4	17.4	18.2
4H	2H	15.8	16.9	16.4	17.6	18.3	13.8	15.0	14.5	15.6	16.4
	3H	18.6	19.6	19.3	20.3	21.1	15.7	16.7	16.4	17.4	18.2
	4H	20.1	21.0	20.8	21.7	22.6	16.6	17.5	17.3	18.2	19.0
	6H	21.8	22.6	22.5	23.3	24.2	17.2	18.0	18.0	18.8	19.7
	8H	22.7	23.4	23.4	24.2	25.1	17.5	18.2	18.2	19.0	19.9
	12H	23.7	24.4	24.5	25.2	26.1	17.7	18.4	18.4	19.1	20.1
8H	4H	20.4	21.2	21.2	21.9	22.8	17.5	18.3	18.3	19.0	19.9
	6H	22.3	23.0	23.1	23.7	24.7	18.6	19.2	19.3	20.0	20.9
	8H	23.5	24.0	24.2	24.8	25.8	19.0	19.6	19.8	20.3	21.3
	12H	24.8	25.3	25.6	26.1	27.0	19.4	19.9	20.2	20.7	21.6
12H	4H	20.4	21.1	21.2	21.9	22.8	17.8	18.5	18.6	19.3	20.2
	6H	22.4	23.0	23.2	23.8	24.7	19.0	19.6	19.8	20.4	21.4
	8H	23.6	24.1	24.5	24.9	25.9	19.6	20.1	20.4	20.9	21.9
Variations with the observer position at spacings:											
S = 1.0H	+ 0.1 / - 0.1					+ 0.1 / - 0.1					
1.5H	+ 0.2 / - 0.3					+ 0.2 / - 0.3					
2.0H	+ 0.2 / - 0.3					+ 0.2 / - 0.4					

CIE Pub.117 Corrected 977.0 lm Total Lamp Luminous Flux.(8log(F/F0) = -0.1)

C Range: 0 - 360DEG
C Interval: 30.0DEG
Test Speed: HIGH
Temperature:25.3DEG
Operators:HXJ
Test Date:2022-07-14

γ Range: 0 - 180DEG
γ Interval: 1.0DEG
Test System:EVERFINE GO-2000B_V1 SYSTEM V2.0.269
Humidity:65.0%
Test Distance:9.200m [K=1.0000]
Remarks:

UTILIZATION FACTORS TABLE

Test:U:24.00V I:0.6446A P:15.47W PF:1.000 Lamp Flux:977.005x1 lm		
NAME: F18-24V-5050-84-3000K	TYPE: 硅胶	WEIGHT:
DIM.: 16.5mm*16.5mm	SPEC.:	SERIAL No.:20220714
MFR.: OLYMPIA	SUR.:1*0.0165	PROTECTION ANGLE:

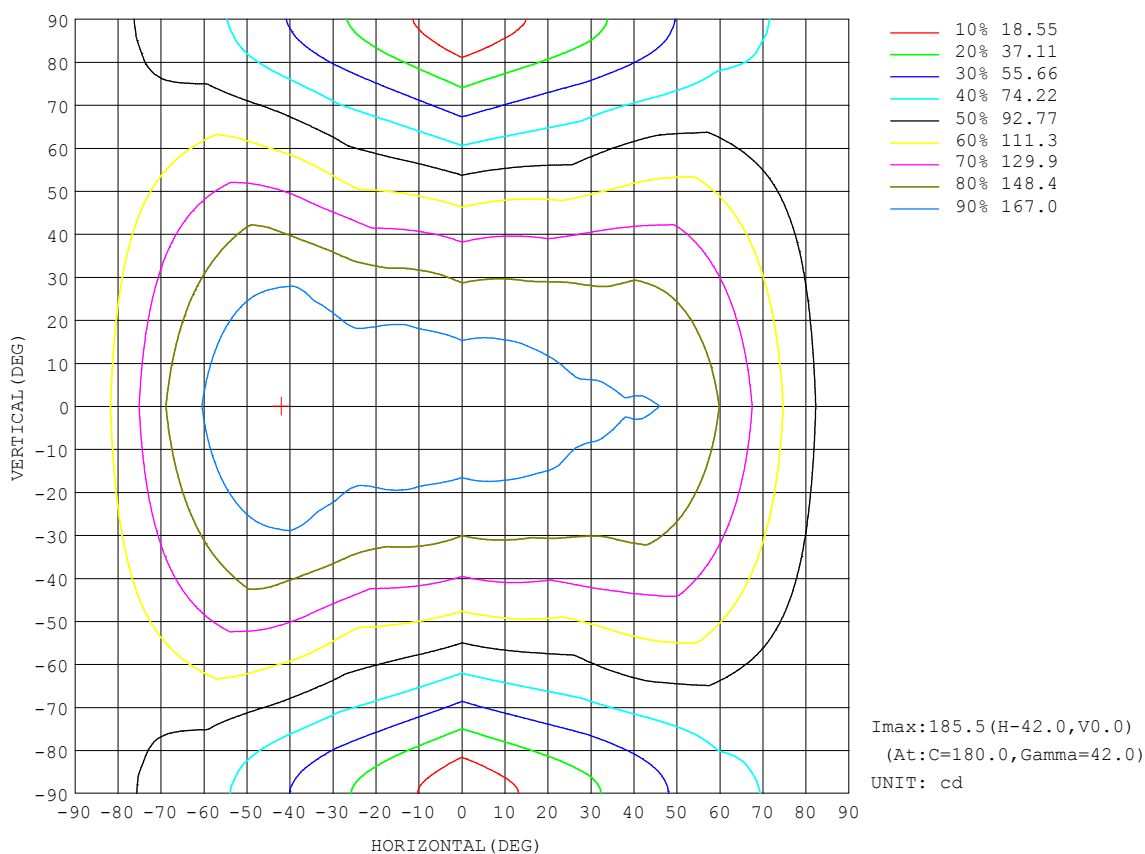
REFLECTANCE										
Ceiling	0.8	0.8	0.8	0.7	0.7	0.7	0.5	0.5	0.5	0
Walls	0.7	0.5	0.3	0.7	0.5	0.3	0.7	0.5	0.3	0
Working plane	0.2	0.2	0.2	0.2	0.2	0.2	0.2	0.2	0.2	0
ROOM INDEX	UTILIZATION FACTORS (PERCENT) $k(RI) \times RCR = 5$									
$k = 0.60$	45	33	25	44	32	25	41	31	24	18
0.80	54	41	33	52	40	32	49	38	31	23
1.00	62	49	40	60	48	40	56	47	38	29
1.25	69	56	47	66	54	46	61	51	44	34
1.50	74	62	53	71	60	52	65	56	49	37
2.00	82	70	62	78	68	60	71	63	57	43
2.50	86	76	68	82	73	66	75	67	61	47
3.00	90	81	73	86	77	71	78	71	66	50
4.00	95	87	80	90	83	77	82	76	71	55
5.00	98	91	85	93	87	82	84	80	75	58
ROOM INDEX	UF(total)									Direct
According to DIN EN 13032-2 2004			Suspended					SHRNOM = 1.25		

C Range: 0 - 360DEG
 C Interval: 30.0DEG
 Test Speed: HIGH
 Temperature:25.3DEG
 Operators:HXJ
 Test Date:2022-07-14

γ Range: 0 - 180DEG
 γ Interval: 1.0DEG
 Test System:EVERFINE GO-2000B_V1 SYSTEM V2.0.269
 Humidity:65.0%
 Test Distance:9.200m [K=1.0000]
 Remarks:

ISOCANDELA DIAGRAM

Test:U:24.00V I:0.6446A P:15.47W PF:1.000 Lamp Flux:977.005x1 lm		
NAME: F18-24V-5050-84-3000K	TYPE: 硅胶	WEIGHT:
DIM.: 16.5mm*16.5mm	SPEC.:	SERIAL No.:20220714
MFR.: OLYMPIA	SUR.:1*0.0165	PROTECTION ANGLE:

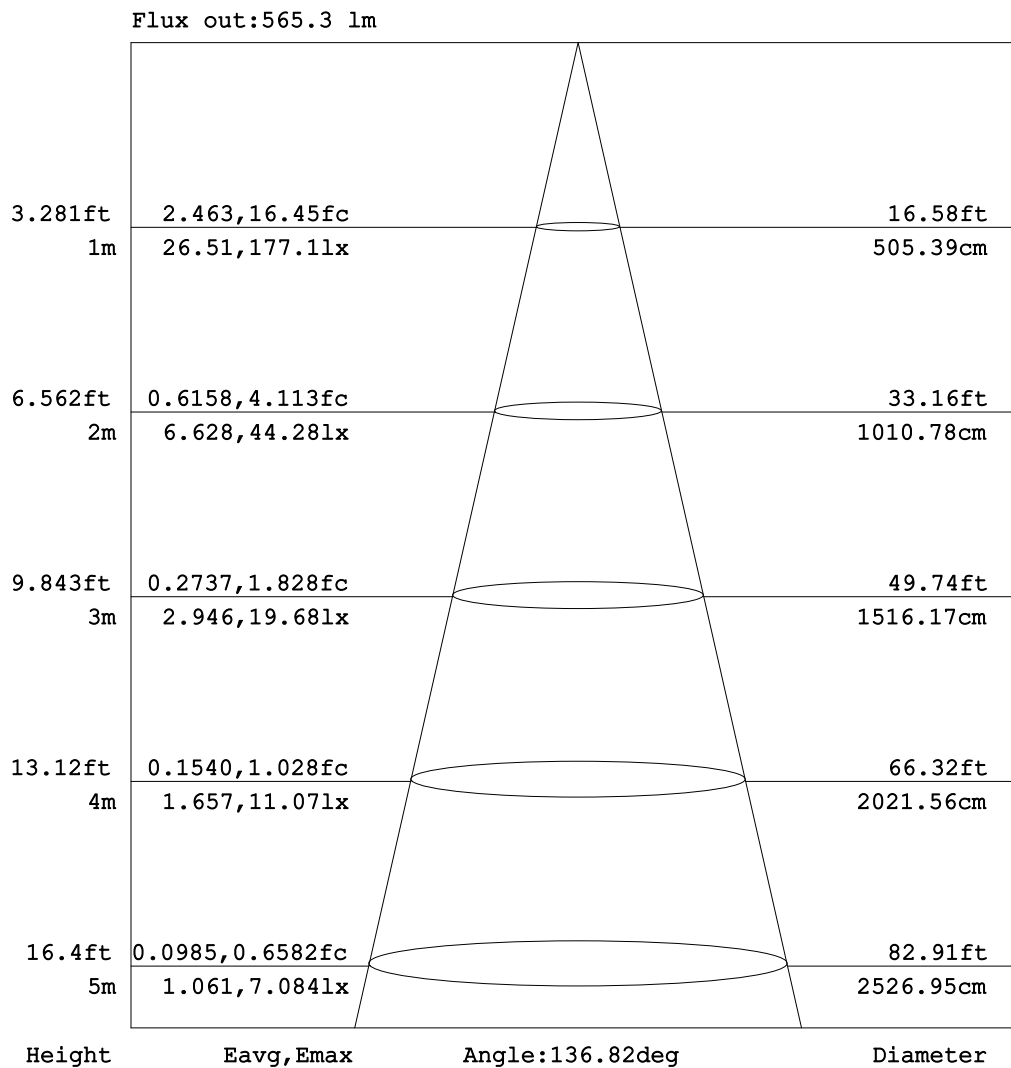


C Range: 0 - 360DEG
C Interval: 30.0DEG
Test Speed: HIGH
Temperature:25.3DEG
Operators:HXJ
Test Date:2022-07-14

γ Range: 0 - 180DEG
 γ Interval: 1.0DEG
Test System:EVERFINE GO-2000B_V1 SYSTEM V2.0.269
Humidity:65.0%
Test Distance:9.200m [K=1.0000]
Remarks:

AAI Figure

Test:U:24.00V I:0.6446A P:15.47W PF:1.000 Lamp Flux:977.005x1 lm		
NAME: F18-24V-5050-84-3000K	TYPE: 硅胶	WEIGHT:
DIM.: 16.5mm*16.5mm	SPEC.:	SERIAL No.:20220714
MFR.: OLYMPIA	SUR.:1*0.0165	PROTECTION ANGLE:



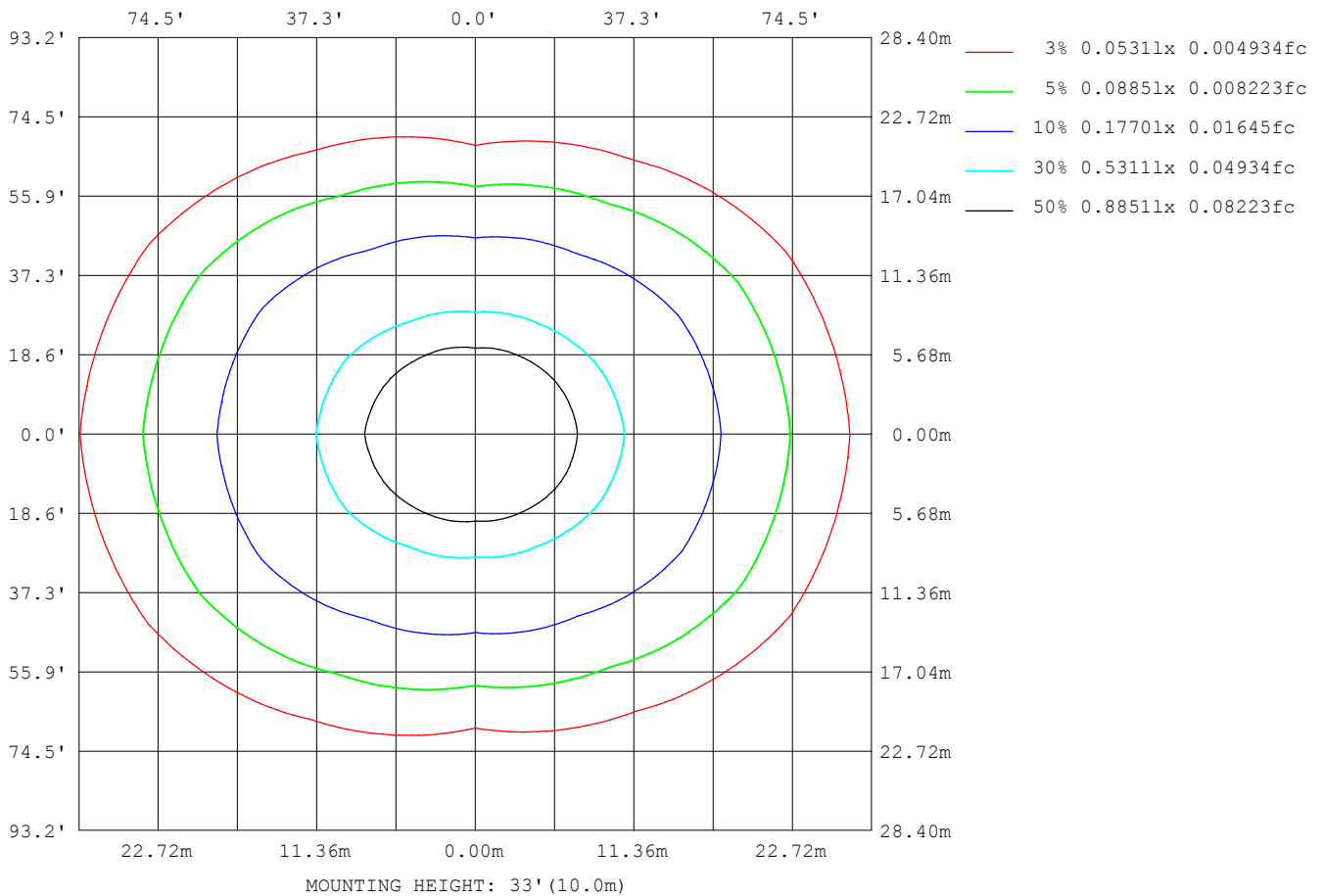
Note: The Curves indicate the illuminated area and the average illumination when the luminaire is at different distance.

C Range: 0 - 360DEG
C Interval: 30.0DEG
Test Speed: HIGH
Temperature: 25.3DEG
Operators: HXJ
Test Date: 2022-07-14

γ Range: 0 - 180DEG
γ Interval: 1.0DEG
Test System: EVERFINE GO-2000B_V1 SYSTEM V2.0.269
Humidity: 65.0%
Test Distance: 9.200m [K=1.0000]
Remarks:

ISOLUX DIAGRAM

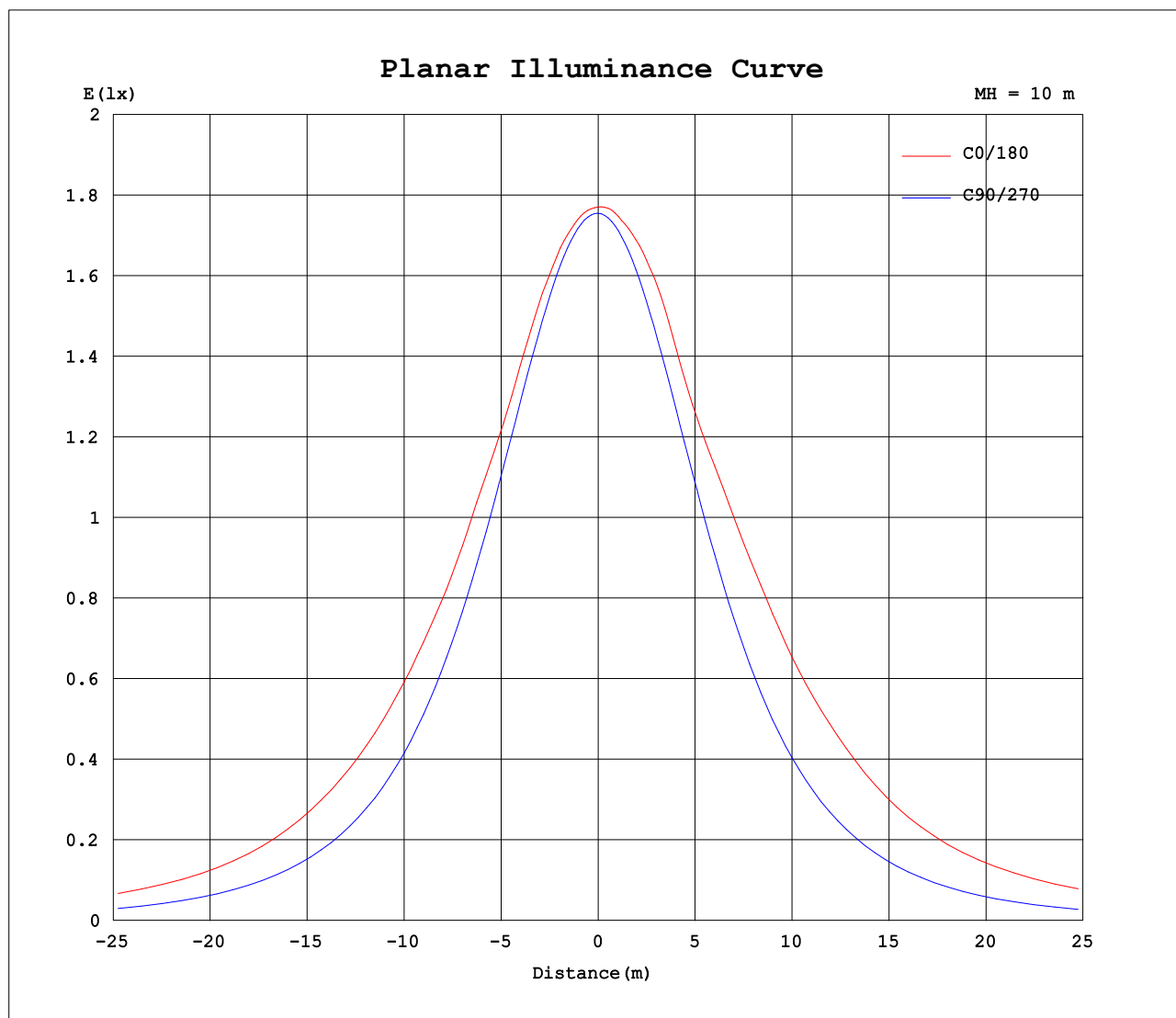
Test:U:24.00V I:0.6446A P:15.47W PF:1.000 Lamp Flux:977.005x1 lm		
NAME: F18-24V-5050-84-3000K	TYPE: 硅胶	WEIGHT:
DIM.: 16.5mm*16.5mm	SPEC.:	SERIAL No.:20220714
MFR.: OLYMPIA	SUR.:1*0.0165	PROTECTION ANGLE:



C Range: 0 - 360DEG
C Interval: 30.0DEG
Test Speed: HIGH
Temperature:25.3DEG
Operators:HXJ
Test Date:2022-07-14

γ Range: 0 - 180DEG
 γ Interval: 1.0DEG
Test System:EVERFINE GO-2000B_V1 SYSTEM V2.0.269
Humidity:65.0%
Test Distance:9.200m [K=1.0000]
Remarks:

Planar Illuminance Curve



C Range: 0 - 360DEG
C Interval: 30.0DEG
Test Speed: HIGH
Temperature: 25.3DEG
Operators: HXJ
Test Date: 2022-07-14

γ Range: 0 - 180DEG
 γ Interval: 1.0DEG
Test System: EVERFINE GO-2000B_V1 SYSTEM V2.0.269
Humidity: 65.0%
Test Distance: 9.200m [K=1.0000]
Remarks:

LUMINOUS DISTRIBUTION INTENSITY DATA

Test:U:24.00V I:0.6446A P:15.47W PF:1.000 Lamp Flux:977.005x1 lm		
NAME: F18-24V-5050-84-3000K	TYPE: 硅胶	WEIGHT:
DIM.: 16.5mm*16.5mm	SPEC.:	SERIAL No.:20220714
MFR.: OLYMPIA	SUR.:1*0.0165	PROTECTION ANGLE:

Table--1

UNIT: cd

C (DEG) γ (DEG)	0	30	60	90	120	150	180	210	240	270	300	330							
0	177	176	176	175	175	175	177	176	176	175	175	175							
5	177	176	175	175	175	175	178	177	175	174	174	175							
10	177	176	174	173	174	175	178	176	174	172	172	174							
15	175	174	171	169	171	176	180	177	171	167	169	172							
20	173	172	167	163	168	176	179	176	167	161	165	169							
25	170	168	161	157	164	172	176	172	164	154	159	166							
30	170	164	155	149	159	169	178	169	158	146	152	161							
35	169	162	147	139	151	169	182	169	150	136	145	159							
40	168	157	139	129	142	169	185	169	141	126	136	154							
45	167	154	129	118	133	169	185	168	131	114	126	151							
50	164	150	119	106	123	165	185	164	121	102	116	147							
55	158	144	107	92.8	112	160	179	159	110	89.2	104	141							
60	148	135	95.7	79.9	103	152	168	151	100.0	75.8	92.4	132							
65	136	125	86.0	66.1	93.7	140	157	139	90.9	61.9	82.7	122							
70	124	113	75.7	51.8	82.8	127	145	127	80.3	47.9	72.5	110							
75	111	98.0	63.6	37.1	70.6	114	130	114	68.8	34.5	61.3	95.7							
80	97.9	84.6	50.9	22.8	58.2	99.2	116	98.8	57.4	21.2	49.1	82.6							
85	87.7	74.3	39.8	11.4	47.3	87.5	105	86.9	46.7	10.3	38.3	72.4							
90	84.2	69.7	34.3	6.09	42.2	82.3	102	81.4	40.9	4.77	32.5	68.0							
95	87.4	72.7	34.4	6.23	40.7	84.2	104	83.1	39.7	5.03	32.1	71.1							
100	89.7	75.0	29.8	6.26	39.3	87.3	103	86.9	38.4	5.12	27.7	71.4							
105	88.7	69.1	27.2	6.28	38.3	88.1	102	87.7	37.3	5.20	25.4	66.0							
110	82.9	64.1	26.5	6.29	38.4	84.8	102	84.6	37.4	5.32	25.9	62.7							
115	78.3	59.4	27.5	6.26	37.7	78.2	97.1	77.7	37.2	5.42	25.8	60.3							
120	73.1	54.6	26.1	6.20	34.9	71.3	89.0	71.1	34.6	5.42	24.1	55.8							
125	66.5	48.7	22.5	6.14	31.1	65.3	80.0	65.2	31.0	5.39	21.6	49.5							
130	58.4	43.8	19.1	5.93	26.5	58.6	71.0	58.2	26.5	5.35	18.2	44.7							
135	50.0	36.1	15.7	5.62	22.3	51.2	61.4	50.3	22.3	5.33	15.4	36.9							
140	42.8	29.3	13.4	5.29	18.7	42.8	51.6	41.6	18.7	5.32	12.8	27.7							
145	35.1	23.0	11.1	5.01	15.0	34.1	41.2	33.5	15.5	5.29	10.7	21.5							
150	27.1	18.0	8.47	4.85	12.1	26.9	30.4	26.3	12.3	5.20	8.85	17.0							
155	21.6	14.1	6.81	4.82	9.80	20.5	22.4	19.4	9.99	5.11	7.26	13.0							
160	17.0	10.4	5.86	4.82	8.08	14.8	17.8	14.3	8.22	5.05	6.22	9.47							
165	10.9	7.25	5.30	4.87	6.75	10.4	11.8	10.2	6.72	4.97	5.28	6.74							
170	5.94	5.74	5.15	4.95	6.08	7.49	6.04	7.27	5.91	4.90	5.01	5.66							
175	5.13	5.17	4.96	5.01	5.80	6.09	5.26	6.03	5.66	4.92	4.92	5.08							
180	4.88	5.18	5.06	5.04	5.15	5.21	4.90	5.18	5.12	4.99	5.10	5.18							

C Range: 0 - 360DEG
C Interval: 30.0DEG
Test Speed: HIGH
Temperature:25.3DEG
Operators:HXJ
Test Date:2022-07-14

γ Range: 0 - 180DEG
γ Interval: 1.0DEG
Test System:EVERFINE GO-2000B_V1 SYSTEM V2.0.269
Humidity:65.0%
Test Distance:9.200m [K=1.0000]
Remarks:

Photometric Data Table [cd]

G/C	0.0	30.0	60.0	90.0	120.0	150.0	180.0	210.0	240.0	270.0
0.0	177.0	176.4	176.0	175.5	175.2	175.0	177.0	176.4	176.0	175.5
3.0	176.9	176.4	175.7	175.3	175.3	175.3	177.5	176.6	175.8	175.1
6.0	176.8	176.2	175.2	174.5	174.9	175.3	177.6	176.5	175.3	174.0
9.0	176.6	175.7	174.2	173.1	174.0	175.4	178.1	176.4	174.3	172.3
12.0	176.0	175.2	172.7	171.1	172.6	175.5	179.1	176.5	172.7	170.0
15.0	175.4	173.9	170.9	168.6	171.1	175.9	179.6	176.7	171.0	167.2
18.0	174.3	172.7	168.6	165.5	169.2	176.1	179.9	176.5	168.9	163.9
21.0	172.7	170.9	165.6	162.0	167.3	175.2	178.3	175.3	166.7	160.1
24.0	170.8	168.7	162.3	157.9	165.2	172.6	176.6	172.6	164.4	155.8
27.0	169.9	166.2	158.8	153.5	162.8	170.0	176.5	170.0	161.6	151.2
30.0	170.3	163.8	154.8	148.6	159.4	168.6	178.4	168.5	158.2	146.0
33.0	169.9	162.7	150.3	143.2	154.5	168.7	180.9	168.4	153.6	140.3
36.0	168.7	161.1	145.8	137.3	149.3	169.4	182.6	168.8	148.3	134.4
39.0	168.1	158.1	140.6	131.2	143.8	169.2	184.5	168.8	142.6	128.1
42.0	168.4	155.6	134.8	124.7	138.2	169.0	185.5	168.2	136.7	121.3
45.0	167.4	153.7	129.0	117.6	132.7	168.8	185.0	168.0	130.8	114.4
48.0	165.8	151.8	123.1	110.5	127.0	166.9	184.9	165.9	125.0	107.2
51.0	163.3	149.1	116.5	103.1	120.8	164.2	184.0	163.1	118.9	99.56
54.0	159.8	145.5	108.9	95.46	114.4	160.9	180.3	159.8	112.1	91.94
57.0	154.5	140.6	102.0	87.89	108.2	156.9	174.6	156.0	105.7	83.95
60.0	148.1	135.2	95.66	79.86	102.5	151.6	168.1	150.7	99.96	75.80
63.0	140.8	129.3	89.79	71.70	97.28	144.8	161.2	144.0	94.50	67.54
66.0	133.4	122.6	84.12	63.30	91.70	137.6	155.0	136.9	88.91	59.12
69.0	126.2	115.5	77.90	54.60	85.12	129.9	148.0	129.1	82.44	50.72
72.0	118.4	107.3	71.07	45.84	77.96	122.5	139.6	121.9	75.62	42.55
75.0	110.5	98.02	63.61	37.10	70.59	114.2	130.1	113.7	68.79	34.49
78.0	102.8	89.56	56.03	28.42	63.13	104.9	121.2	104.5	62.04	26.43
81.0	95.62	82.20	48.50	20.18	55.75	96.44	113.2	96.13	55.13	18.66
84.0	89.36	76.05	41.74	13.29	49.25	89.35	106.5	88.92	48.66	11.91
87.0	85.76	71.49	36.62	8.219	44.26	84.69	103.1	84.04	43.54	7.094
90.0	84.16	69.70	34.33	6.087	42.19	82.31	102.4	81.43	40.92	4.772
93.0	86.10	71.29	34.51	6.212	41.13	83.01	103.7	81.91	40.24	4.980
96.0	87.86	73.30	33.65	6.247	40.52	84.77	104.0	83.82	39.48	5.046
99.0	89.30	75.18	30.73	6.257	39.55	86.75	103.4	86.12	38.66	5.106
102.0	89.98	73.84	28.33	6.269	38.86	88.20	102.7	87.84	37.81	5.146
105.0	88.74	69.14	27.22	6.277	38.34	88.14	102.3	87.67	37.33	5.197
108.0	84.55	65.97	26.76	6.282	38.33	86.51	102.3	86.25	37.23	5.267
111.0	82.05	63.13	26.88	6.287	38.42	83.86	101.0	83.53	37.54	5.347
114.0	79.18	60.34	27.55	6.267	38.03	79.88	98.22	79.12	37.49	5.407
117.0	76.32	57.66	26.84	6.237	36.74	75.03	94.04	74.91	36.31	5.433
120.0	73.05	54.56	26.07	6.197	34.85	71.28	89.04	71.06	34.55	5.418
123.0	69.21	50.99	23.69	6.161	32.83	67.89	83.55	67.57	32.60	5.403
126.0	64.97	47.93	21.92	6.106	30.21	64.13	78.38	63.88	30.03	5.363
129.0	60.17	44.70	19.92	5.980	27.41	60.03	72.89	59.71	27.35	5.348
132.0	55.27	41.59	17.68	5.819	24.74	55.74	67.12	55.09	24.78	5.342
135.0	50.03	36.05	15.71	5.618	22.26	51.15	61.37	50.25	22.31	5.335
138.0	45.39	31.67	14.38	5.417	20.08	46.10	55.49	45.08	20.10	5.328
141.0	41.36	28.09	12.89	5.226	17.88	40.96	49.66	39.96	18.05	5.322
144.0	36.67	24.21	11.51	5.056	15.64	35.76	43.42	35.04	16.09	5.307
147.0	31.66	20.69	10.13	4.930	13.75	30.93	36.63	30.56	14.17	5.252
150.0	27.09	18.00	8.469	4.854	12.09	26.85	30.37	26.26	12.30	5.197
153.0	24.00	15.43	7.256	4.836	10.63	23.02	25.18	21.97	10.78	5.142
156.0	20.42	13.47	6.621	4.817	9.437	19.27	21.39	18.28	9.641	5.101
159.0	17.88	11.29	6.018	4.810	8.427	15.82	18.59	15.29	8.590	5.066
162.0	14.56	8.885	5.580	4.840	7.507	12.89	15.33	12.52	7.585	5.031
165.0	10.92	7.254	5.303	4.865	6.747	10.43	11.75	10.15	6.717	4.971
168.0	8.095	6.185	5.192	4.915	6.269	8.550	9.108	8.282	6.125	4.905
171.0	5.697	5.562	5.097	4.960	6.011	7.002	5.757	6.858	5.839	4.897
174.0	5.228	5.251	4.991	4.991	5.871	6.201	5.307	6.118	5.729	4.900
177.0	5.001	5.016	4.900	5.026	5.605	5.899	5.206	5.841	5.502	4.945
180.0	4.880	5.182	5.056	5.041	5.151	5.207	4.895	5.182	5.121	4.991
G/C	300.0	330.0								
0.0	175.2	175.0								
3.0	174.7	174.8								
6.0	174.0	174.4								
9.0	172.9	173.9								
12.0	171.2	173.3								
15.0	169.3	171.7								
18.0	166.9	170.5								
21.0	163.7	168.4								
24.0	160.0	166.3								
27.0	156.4	163.7								
30.0	152.3	161.1								

C Range: 0 - 360DEG
 C Interval: 30.0DEG
 Test Speed: HIGH
 Temperature: 25.3DEG
 Operators: HXJ
 Test Date: 2022-07-14

γ Range: 0 - 180DEG
 γ Interval: 1.0DEG
 Test System: EVERFINE GO-2000B_V1 SYSTEM V2.0.269
 Humidity: 65.0%
 Test Distance: 9.200m [K=1.0000]
 Remarks:

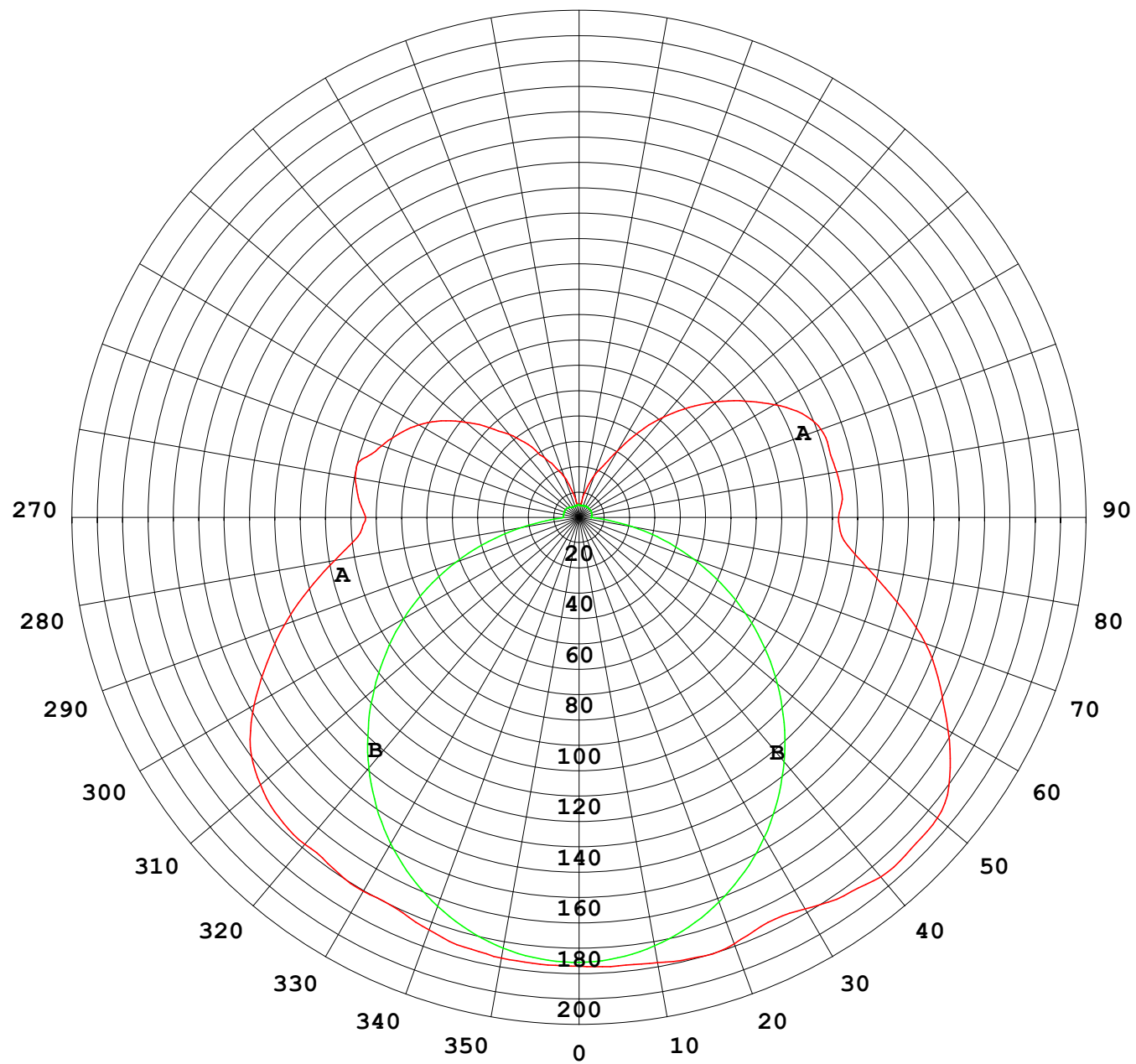
Photometric Data Table [cd]

33.0	147.9	159.9
36.0	143.0	158.3
39.0	137.9	155.1
42.0	131.9	152.4
45.0	125.9	150.7
48.0	119.9	148.7
51.0	113.4	145.9
54.0	105.9	142.2
57.0	98.92	137.3
60.0	92.41	131.8
63.0	86.49	126.2
66.0	80.74	119.4
69.0	74.61	112.5
72.0	68.17	104.9
75.0	61.25	95.69
78.0	54.00	87.47
81.0	46.78	80.28
84.0	40.16	73.99
87.0	35.01	69.73
90.0	32.47	67.98
93.0	32.36	69.51
96.0	31.11	71.84
99.0	28.47	72.20
102.0	25.92	71.35
105.0	25.37	66.04
108.0	25.39	62.79
111.0	26.29	61.26
114.0	25.39	59.80
117.0	26.05	59.04
120.0	24.06	55.83
123.0	22.90	51.75
126.0	20.98	48.52
129.0	18.93	45.66
132.0	17.13	41.07
135.0	15.39	36.89
138.0	13.84	31.97
141.0	12.36	26.52
144.0	11.12	22.83
147.0	10.04	19.58
150.0	8.850	16.97
153.0	7.661	14.37
156.0	7.059	12.39
159.0	6.470	10.30
162.0	5.727	8.183
165.0	5.276	6.738
168.0	5.106	5.968
171.0	4.975	5.504
174.0	4.930	5.157
177.0	4.900	5.001
180.0	5.101	5.177

C Range: 0 - 360DEG
C Interval: 30.0DEG
Test Speed: HIGH
Temperature:25.3DEG
Operators:HXJ
Test Date:2022-07-14

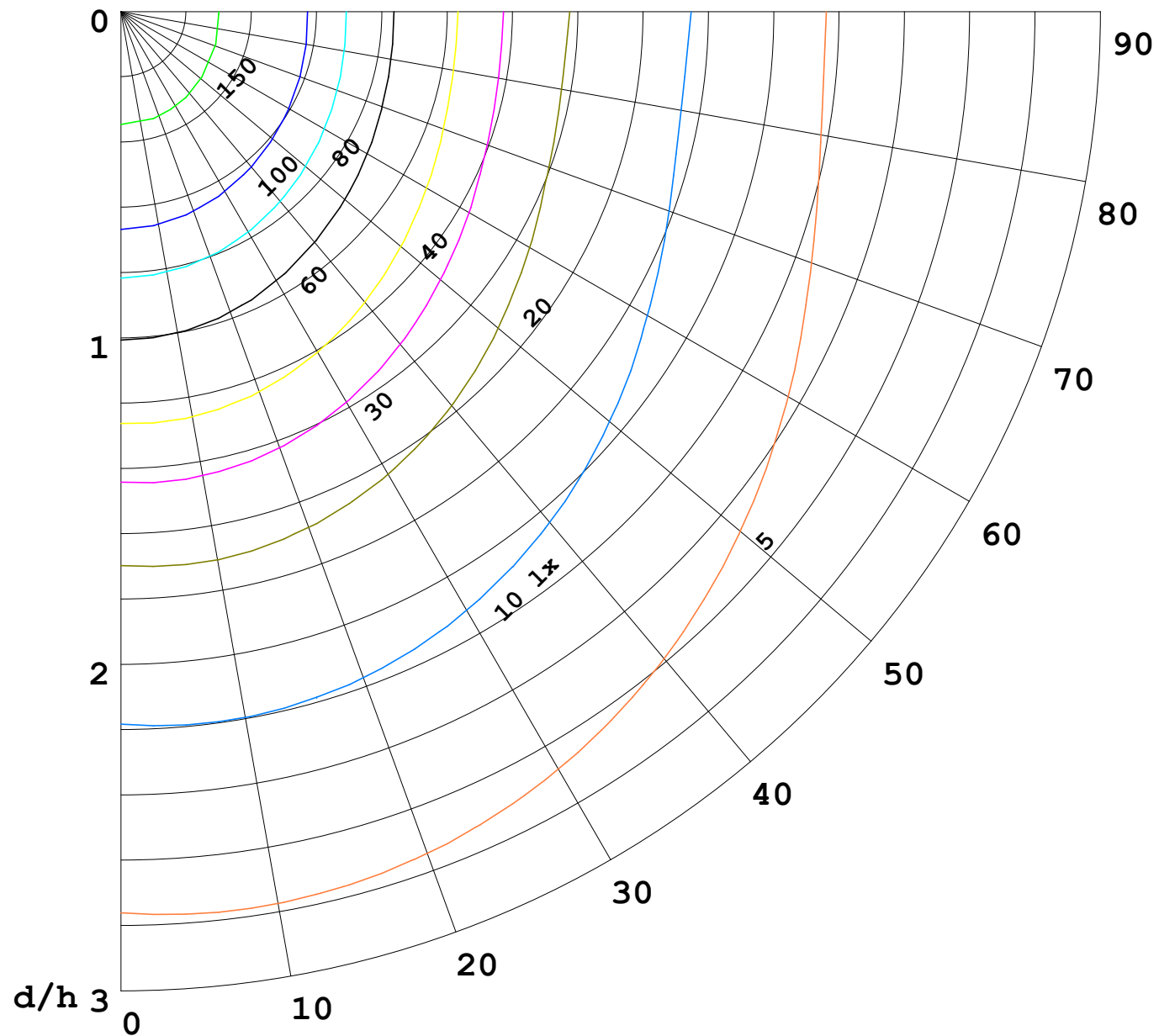
√ Range: 0 - 180DEG
√ Interval: 1.0DEG
Test System:EVERFINE GO-2000B_V1 SYSTEM V2.0.269
Humidity:65.0%
Test Distance:9.200m [K=1.0000]
Remarks:

I (cd)



1000 lm

$\kappa = 1$



F = 5000 lm
 K = 0.7
 Hcc = 0.0 m
 Hfc = 0.0 m
 Eave = 100 lx

	Pcc	Pw	Pfc
—	70	50	30
—	50	30	20

