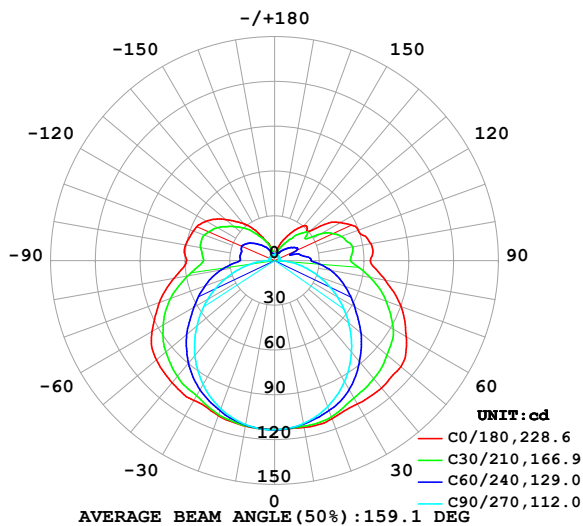


## LUMINAIRE PHOTOMETRIC TEST REPORT

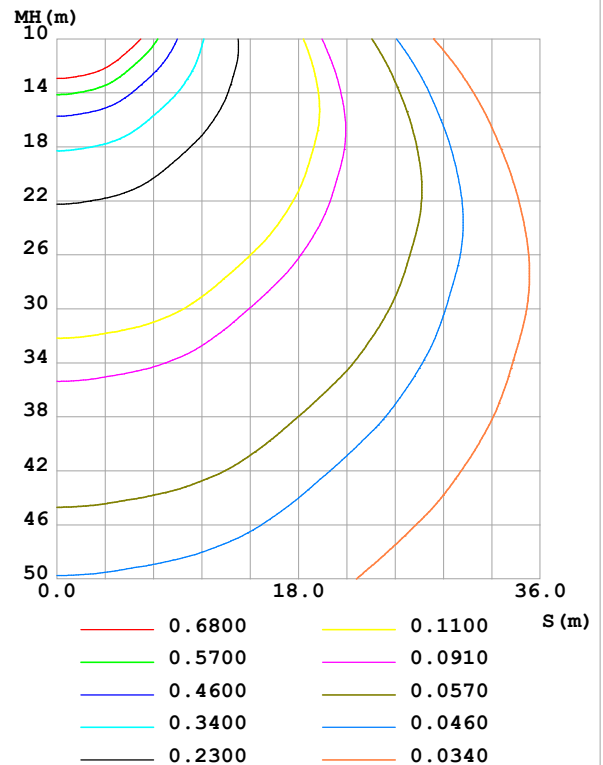
Test:U:24.00V I:0.4118A P:9.883W PF:1.000 Freq:0Hz Lamp Flux:627.421x1 lm		
NAME: SF18-24V-3528-144-4500K-80	TYPE:	WEIGHT:
SPEC.:	DIM.: Length=1m	SERIAL No.:
MFR.: OLympia lighting	SUR.:	Shielding Angle:

DATA OF LAMP		PHOTOMETRIC DATA Eff: 63.48 lm/W			
MODEL	3528	Imax (cd)	113.8	S/MH(C0/180)	1.46
NOMINAL POWER(W)	10	LOR(%)	100.0	S/MH(C90/270)	1.26
RATED VOLTAGE(V)	24	TOTAL FLUX(lm)	627.42	$\eta$ UP,DN(C0-180)	12.7,37.0
NOMINAL FLUX(lm)	627.421	CIE CLASS	SEMI-D.	$\eta$ UP,DN(C180-360)	13.0,37.3
LAMPS INSIDE	1	$\eta$ up (%)	25.7	CIBSE SHR NOM	1.50
TEST VOLTAGE(V)		$\eta$ down (%)	74.3	CIBSE SHR MAX	1.55

LUMINOUS INTENSITY DISTRIBUTION DIAGRAM



C0 PLANE ISOLUX DIAGRAM (UNIT:lx)



C Range: 0 - 360DEG  
C Interval: 30.0DEG  
Test Speed: HIGH  
Temperature:25.3℃  
Operators:  
Test Date:2025-02-18

$\gamma$  Range: 0 - 180DEG  
 $\gamma$  Interval: 1.0DEG  
Test System:EVERFINE GO-2000B\_V1 SYSTEM V2.00.488  
Humidity:65.0%  
Test Distance:6.360m [K=1.0000]  
Remarks:

## ZONAL FLUX DIAGRAM

## ZONAL FLUX DIAGRAM:

$\gamma$	C0	C45	C90	C135	C180	C225	C270	C315	$\gamma$	$\Phi$ zone	$\Phi$ total	%lum,lamp
10	113.4	112.0	110.9	111.6	112.7	112.1	111.6	112.5	0- 10	10.75	10.75	1.71,1.71
20	112.7	109.2	104.1	107.3	110.4	108.5	105.7	110.1	10- 20	31.30	42.05	6.7,6.7
30	110.9	103.2	93.65	100.2	108.2	102.3	95.92	104.5	20- 30	48.76	90.81	14.5,14.5
40	111.4	95.91	80.17	92.71	106.9	95.59	83.11	97.35	30- 40	62.19	153.0	24.4,24.4
50	110.5	86.97	64.79	82.88	103.5	86.10	67.97	88.41	40- 50	70.37	223.4	35.6,35.6
60	101.9	76.92	48.51	71.27	94.91	74.26	51.67	77.96	50- 60	72.36	295.7	47.1,47.1
70	90.08	64.82	32.09	59.16	82.30	61.98	34.82	65.55	60- 70	67.86	363.6	58,58
80	75.27	51.57	16.35	44.97	68.52	47.70	18.38	51.84	70- 80	57.97	421.6	67.2,67.2
90	64.14	37.75	2.703	34.28	58.95	35.47	3.648	38.06	80- 90	44.30	465.9	74.3,74.3
100	65.56	36.18	2.828	36.66	60.61	36.94	3.536	36.96	90-100	38.75	504.6	80.4,80.4
110	59.68	29.43	3.082	36.70	58.01	36.94	3.808	31.81	100-110	36.31	540.9	86.2,86.2
120	51.00	26.80	3.357	32.24	52.84	33.38	3.907	28.69	110-120	31.45	572.4	91.2,91.2
130	30.91	21.30	3.479	25.62	42.81	26.81	4.052	23.16	120-130	23.42	595.8	95,95
140	30.50	15.88	3.745	18.92	32.30	20.35	3.954	15.45	130-140	15.81	611.6	97.5,97.5
150	20.91	9.875	3.924	12.52	20.61	13.77	3.829	9.507	140-150	9.254	620.9	99,99
160	12.42	6.360	3.994	7.995	12.50	8.394	3.841	6.069	150-160	4.449	625.3	99.7,99.7
170	5.046	4.739	4.072	4.681	4.321	4.624	3.933	4.634	160-170	1.705	627.0	99.9,99.9
180	3.883	4.115	4.089	4.175	3.863	4.105	4.087	4.183	170-180	0.4128	627.4	100,100
DEG	LUMINOUS INTENSITY:cd									UNIT:lm		

Conical surface Flux(90deg): 187.53 lm

%lum = 29.9%

%lamp = 29.9%

Conical surface Flux(130deg): 330.58 lm

%lum = 52.7%

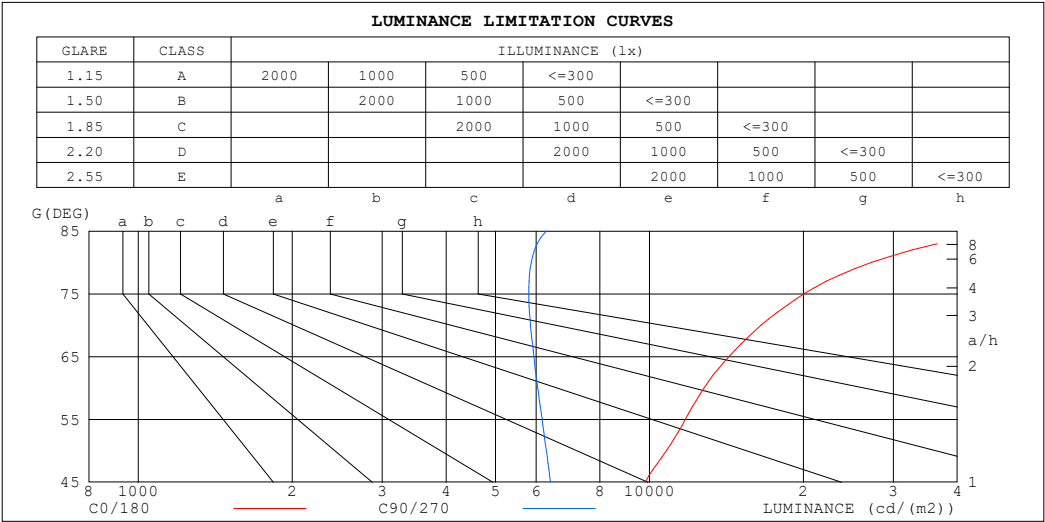
%lamp = 52.7%

C Range: 0 - 360DEG  
 C Interval: 30.0DEG  
 Test Speed: HIGH  
 Temperature:25.3℃  
 Operators:  
 Test Date:2025-02-18

$\gamma$  Range: 0 - 180DEG  
 $\gamma$  Interval: 1.0DEG  
 Test System:EVERFINE GO-2000B\_V1 SYSTEM V2.00.488  
 Humidity:65.0%  
 Test Distance:6.360m [K=1.0000]  
 Remarks:

LUMINANCE LIMITATION CURVES

Test:U:24.00V I:0.4118A P:9.883W PF:1.000 Freq:0Hz Lamp Flux:627.421x1 lm		
NAME: SF18-24V-3528-144-4500K-80	TYPE:	WEIGHT:
SPEC.:	DIM.: Length=1m	SERIAL No.:
MFR.: OLympia lighting	SUR.:	Shielding Angle:



LUMINANCE cd/(m2)		
G (DEG)	C0/180	C90/270
85	49122	6286
80	27207	5870
75	20072	5804
70	16530	5848
65	14315	5938
60	12792	6046
55	11758	6164
50	10791	6282
45	9807	6403

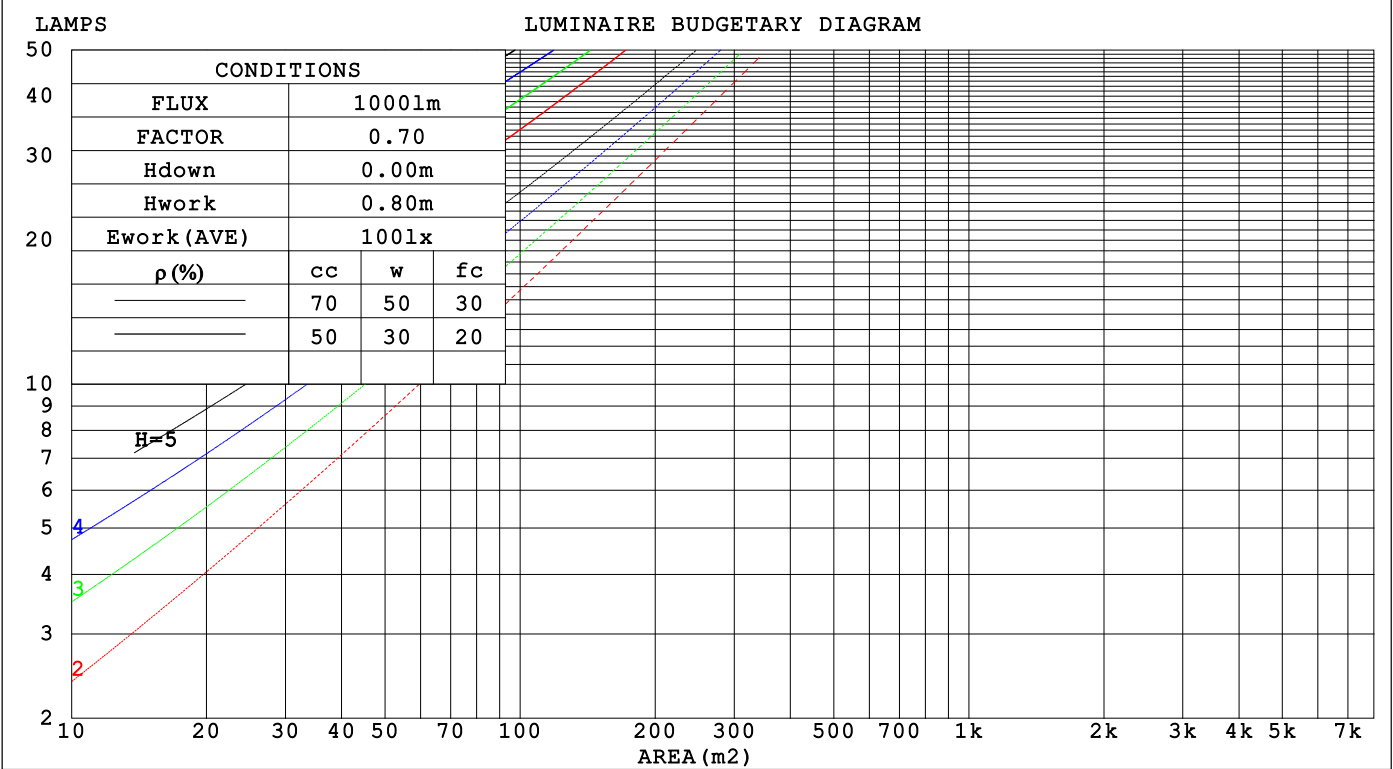
C Range: 0 - 360DEG  
C Interval: 30.0DEG  
Test Speed: HIGH  
Temperature:25.3℃  
Operators:  
Test Date:2025-02-18

γ Range: 0 - 180DEG  
γ Interval: 1.0DEG  
Test System:EVERFINE GO-2000B\_V1 SYSTEM V2.00.488  
Humidity:65.0%  
Test Distance:6.360m [K=1.0000]  
Remarks:

CU AND LUMINAIRE BUDGETARY ESTIMATE DIAGRAM

Test:U:24.00V I:0.4118A P:9.883W PF:1.000 Freq:0Hz		
Lamp Flux:627.42lx1 lm		
NAME: SF18-24V-3528-144-4500K-80	TYPE:	WEIGHT:
SPEC.:	DIM.: Length=1m	SERIAL No.:
MFR.: OLYmpia lighting	SUR.:	Shielding Angle:

pcc	80%			70%			50%			30%			10%			0
pw	50%	30%	10%	50%	30%	10%	50%	30%	10%	50%	30%	10%	50%	30%	10%	0
pfc	20%			20%			20%			20%			20%			0
RCR	RCR:Room Cavity Ratio			Coefficients of Utilization(CU)												
0.0	1.13	1.13	1.13	1.07	1.07	1.07	.97	.97	.97	.87	.87	.87	.78	.78	.78	.74
1.0	.94	.89	.84	.89	.84	.80	.80	.76	.73	.72	.69	.66	.64	.62	.60	.56
2.0	.80	.72	.66	.76	.69	.63	.68	.63	.58	.61	.57	.53	.54	.51	.48	.44
3.0	.69	.60	.53	.66	.58	.51	.59	.52	.47	.53	.47	.43	.47	.43	.39	.36
4.0	.61	.51	.44	.58	.49	.43	.52	.45	.39	.47	.41	.36	.41	.37	.33	.30
5.0	.54	.44	.37	.51	.43	.36	.46	.39	.33	.41	.35	.31	.37	.32	.28	.25
6.0	.48	.39	.32	.46	.37	.31	.41	.34	.29	.37	.31	.26	.33	.28	.24	.22
7.0	.43	.34	.28	.41	.33	.27	.37	.30	.25	.34	.28	.23	.30	.25	.21	.19
8.0	.39	.31	.25	.37	.29	.24	.34	.27	.22	.31	.25	.20	.28	.23	.19	.17
9.0	.36	.28	.22	.34	.26	.21	.31	.24	.20	.28	.22	.18	.26	.21	.17	.15
10.0	.33	.25	.20	.31	.24	.19	.29	.22	.18	.26	.20	.16	.24	.19	.15	.13



C Range: 0 - 360DEG  
C Interval: 30.0DEG  
Test Speed: HIGH  
Temperature:25.3℃  
Operators:  
Test Date:2025-02-18

γ Range: 0 - 180DEG  
γ Interval: 1.0DEG  
Test System:EVERFINE GO-2000B\_V1 SYSTEM V2.00.488  
Humidity:65.0%  
Test Distance:6.360m [K=1.0000]  
Remarks:

## WEC AND CCEC

Test:U:24.00V I:0.4118A P:9.883W PF:1.000 Freq:0Hz Lamp Flux:627.421x1 lm		
NAME: SF18-24V-3528-144-4500K-80	TYPE:	WEIGHT:
SPEC.:	DIM.: Length=1m	SERIAL No.:
MFR.: OLympia lighting	SUR.:	Shielding Angle:

pcc	80%			70%			50%			30%			10%			0														
pw	50%	30%	10%	50%	30%	10%	50%	30%	10%	50%	30%	10%	50%	30%	10%	0														
pfc	20%			20%			20%			20%			20%			0														
RCR	RCR:Room Cavity Ratio															Wall Exitance Coefficients(WEC)														
0.0																														
1.0	.381	.217	.069	.366	.209	.066	.338	.194	.062	.312	.180	.058	.288	.167	.054															
2.0	.331	.181	.056	.317	.175	.054	.291	.162	.050	.268	.150	.047	.246	.139	.044															
3.0	.294	.156	.047	.281	.151	.045	.258	.140	.043	.237	.130	.040	.217	.120	.037															
4.0	.264	.137	.040	.253	.133	.039	.232	.123	.037	.212	.114	.034	.194	.105	.032															
5.0	.240	.122	.035	.230	.118	.034	.211	.110	.032	.193	.102	.030	.176	.094	.028															
6.0	.220	.110	.032	.211	.107	.031	.193	.099	.029	.177	.092	.027	.161	.085	.025															
7.0	.203	.100	.028	.195	.097	.028	.178	.090	.026	.163	.084	.024	.149	.077	.023															
8.0	.188	.092	.026	.180	.089	.025	.165	.083	.024	.151	.077	.022	.138	.071	.021															
9.0	.175	.085	.024	.168	.082	.023	.154	.076	.022	.141	.071	.020	.129	.065	.019															
10.0	.164	.079	.022	.157	.076	.021	.145	.071	.020	.132	.066	.019	.121	.061	.017															

pcc	80%			70%			50%			30%			10%			0
pw	50%	30%	10%	50%	30%	10%	50%	30%	10%	50%	30%	10%	50%	30%	10%	0
pfc	20%			20%			20%			20%			20%			0
RCR	RCR:Room Cavity Ratio						Ceiling Cavity Exitance Coefficients (CCEC)									
0.0	.387	.387	.387	.330	.330	.330	.226	.226	.226	.130	.130	.130	.041	.041	.041	
1.0	.383	.353	.327	.328	.303	.281	.224	.209	.194	.129	.121	.113	.041	.039	.037	
2.0	.377	.331	.292	.323	.285	.253	.221	.197	.176	.127	.115	.103	.041	.037	.034	
3.0	.369	.315	.271	.317	.271	.235	.217	.189	.165	.126	.110	.097	.040	.036	.032	
4.0	.362	.302	.257	.310	.261	.223	.213	.182	.157	.123	.107	.093	.040	.035	.031	
5.0	.354	.293	.247	.304	.253	.215	.210	.177	.152	.121	.104	.090	.039	.034	.030	
6.0	.347	.285	.241	.298	.247	.210	.206	.173	.148	.119	.102	.088	.039	.033	.029	
7.0	.340	.279	.236	.292	.241	.205	.202	.169	.145	.117	.100	.087	.038	.033	.029	
8.0	.333	.273	.232	.287	.237	.202	.199	.166	.143	.116	.098	.085	.037	.032	.028	
9.0	.327	.268	.229	.282	.233	.199	.195	.164	.142	.114	.097	.084	.037	.032	.028	
10.0	.321	.264	.226	.277	.229	.197	.192	.161	.140	.112	.095	.084	.036	.031	.028	

C Range: 0 - 360DEG  
C Interval: 30.0DEG  
Test Speed: HIGH  
Temperature:25.3℃  
Operators:  
Test Date:2025-02-18

γ Range: 0 - 180DEG  
γ Interval: 1.0DEG  
Test System:EVERFINE GO-2000B\_V1 SYSTEM V2.00.488  
Humidity:65.0%  
Test Distance:6.360m [K=1.0000]  
Remarks:

UGR(Unified Glare Rating) Table

Test:U:24.00V I:0.4118A P:9.883W PF:1.000 Freq:0Hz Lamp Flux:627.421x1 lm										
NAME: SF18-24V-3528-144-4500K-80					TYPE:			WEIGHT:		
SPEC.:					DIM.: Length=1m			SERIAL No.:		
MFR.: OLympia lighting					SUR.:			Shielding Angle:		
ceiling/cavity	0.7	0.7	0.5	0.5	0.3	0.7	0.7	0.5	0.5	0.3
walls	0.5	0.3	0.5	0.3	0.3	0.5	0.3	0.5	0.3	0.3
working plane	0.2	0.2	0.2	0.2	0.2	0.2	0.2	0.2	0.2	0.2
Room dimensions	Viewed crosswise					Viewed endwise				
x = 2H y = 2H	21.9	23.2	22.5	23.8	24.5	18.7	20.0	19.3	20.6	21.3
3H	24.7	25.9	25.3	26.5	27.3	20.4	21.6	21.0	22.2	23.0
4H	26.2	27.3	26.8	28.0	28.7	21.2	22.3	21.8	22.9	23.7
6H	27.8	28.9	28.5	29.5	30.3	21.8	22.9	22.5	23.5	24.3
8H	28.7	29.7	29.4	30.4	31.2	22.1	23.1	22.7	23.8	24.6
12H	29.7	30.7	30.4	31.4	32.2	22.2	23.2	22.9	23.9	24.7
4H 2H	22.4	23.5	23.0	24.2	24.9	20.1	21.3	20.8	21.9	22.7
3H	25.4	26.4	26.1	27.1	27.9	22.0	23.0	22.7	23.7	24.5
4H	27.1	28.0	27.9	28.8	29.6	22.9	23.8	23.7	24.6	25.4
6H	29.0	29.8	29.7	30.5	31.4	23.8	24.6	24.5	25.3	26.2
8H	30.0	30.7	30.7	31.5	32.4	24.1	24.9	24.9	25.6	26.5
12H	31.1	31.8	31.9	32.6	33.5	24.4	25.1	25.1	25.8	26.8
8H 4H	27.4	28.2	28.2	28.9	29.8	24.2	24.9	24.9	25.7	26.6
6H	29.6	30.2	30.3	31.0	31.9	25.3	26.0	26.1	26.8	27.7
8H	30.8	31.3	31.6	32.1	33.1	25.9	26.4	26.7	27.2	28.2
12H	32.2	32.7	33.0	33.5	34.5	26.3	26.8	27.2	27.7	28.6
12H 4H	27.4	28.1	28.2	28.9	29.8	24.6	25.3	25.3	26.0	26.9
6H	29.7	30.2	30.5	31.0	32.0	26.0	26.5	26.7	27.3	28.3
8H	31.0	31.5	31.8	32.3	33.3	26.7	27.1	27.5	28.0	28.9
Variations with the observer position at spacings(CIE Pub.117):										
S = 1.0H	+ 0.1 / - 0.1					+ 0.1 / - 0.1				
1.5H	+ 0.2 / - 0.2					+ 0.2 / - 0.3				
2.0H	+ 0.2 / - 0.3					+ 0.2 / - 0.4				

CIE Pub.117, 627.4 lm Total Lamp Luminous Flux Correct (8log(F/F0) = -1.6)  
Area: 0.016 m2

C Range: 0 - 360DEG  
C Interval: 30.0DEG  
Test Speed: HIGH  
Temperature:25.3℃  
Operators:  
Test Date:2025-02-18

γ Range: 0 - 180DEG  
γ Interval: 1.0DEG  
Test System:EVERFINE GO-2000B\_V1 SYSTEM V2.00.488  
Humidity:65.0%  
Test Distance:6.360m [K=1.0000]  
Remarks:

## UTILIZATION FACTORS TABLE

Test:U:24.00V I:0.4118A P:9.883W PF:1.000 Freq:0Hz Lamp Flux:627.421x1 lm		
NAME: SF18-24V-3528-144-4500K-80	TYPE:	WEIGHT:
SPEC.:	DIM.: Length=1m	SERIAL No.:
MFR.: OLympia lighting	SUR.:	Shielding Angle:

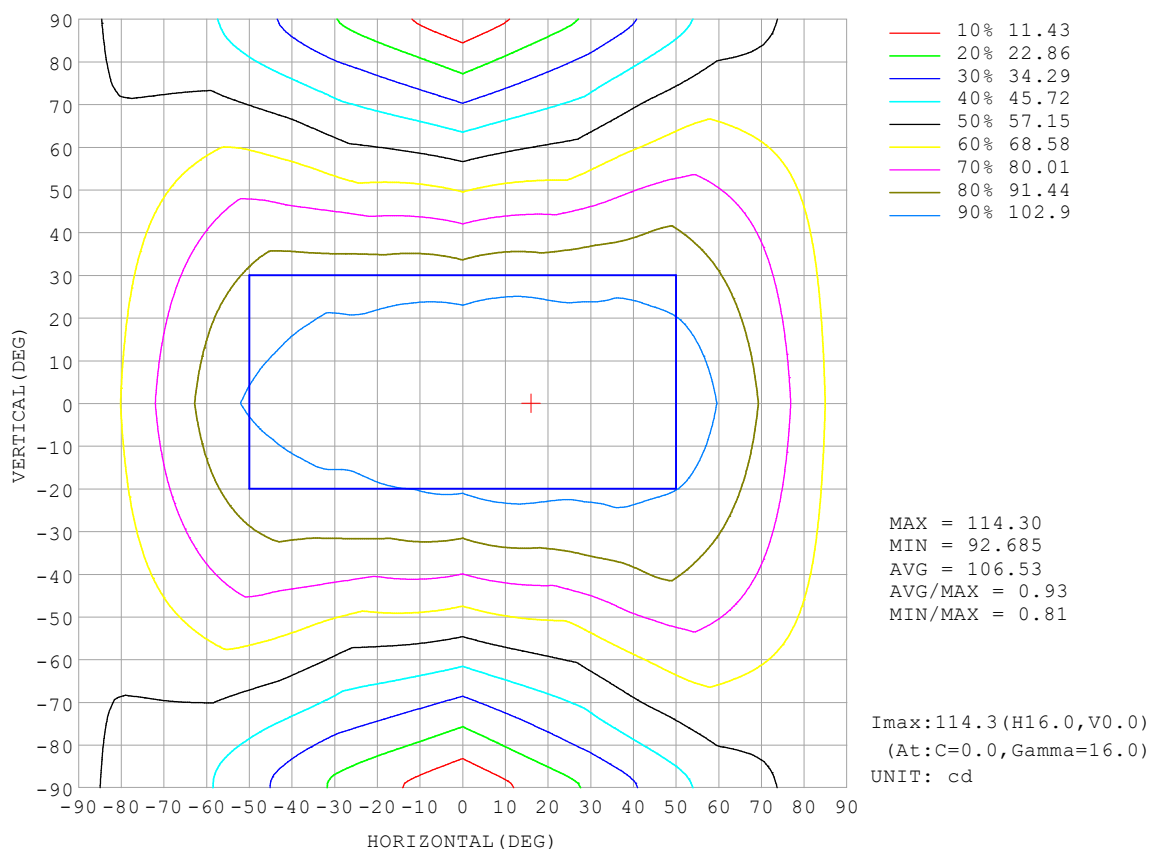
REFLECTANCE										
Ceiling	0.8	0.8	0.8	0.7	0.7	0.7	0.5	0.5	0.5	0
Walls	0.7	0.5	0.3	0.7	0.5	0.3	0.7	0.5	0.3	0
Working plane	0.2	0.2	0.2	0.2	0.2	0.2	0.2	0.2	0.2	0
ROOM INDEX	UTILIZATION FACTORS (PERCENT) $k(RI) \times RCR = 5$									
$k = 0.60$	45	33	25	44	32	25	41	31	24	18
0.80	54	41	33	52	40	32	49	38	31	23
1.00	62	49	40	59	47	39	55	47	38	28
1.25	69	56	47	66	54	46	61	51	44	33
1.50	74	61	53	71	59	51	65	56	49	37
2.00	81	70	61	78	67	60	71	63	56	43
2.50	86	76	67	82	73	65	75	67	61	46
3.00	90	80	73	86	77	70	78	71	65	50
4.00	95	87	80	90	83	77	82	76	71	54
5.00	98	91	85	93	87	81	84	79	75	57
ROOM INDEX	UF (total)									Direct
According to DIN EN 13032-2 2004			Suspended					SHRNOM = 1.25		

C Range: 0 - 360DEG  
 C Interval: 30.0DEG  
 Test Speed: HIGH  
 Temperature: 25.3 °C  
 Operators:  
 Test Date: 2025-02-18

γ Range: 0 - 180DEG  
 γ Interval: 1.0DEG  
 Test System: EVERFINE GO-2000B\_V1 SYSTEM V2.00.488  
 Humidity: 65.0%  
 Test Distance: 6.360m [K=1.0000]  
 Remarks:

## ISOCANDELA DIAGRAM

Test:U:24.00V I:0.4118A P:9.883W PF:1.000 Freq:0Hz Lamp Flux:627.42lx1 lm		
NAME: SF18-24V-3528-144-4500K-80	TYPE:	WEIGHT:
SPEC.:	DIM.: Length=1m	SERIAL No.:
MFR.: OLympia lighting	SUR.:	Shielding Angle:



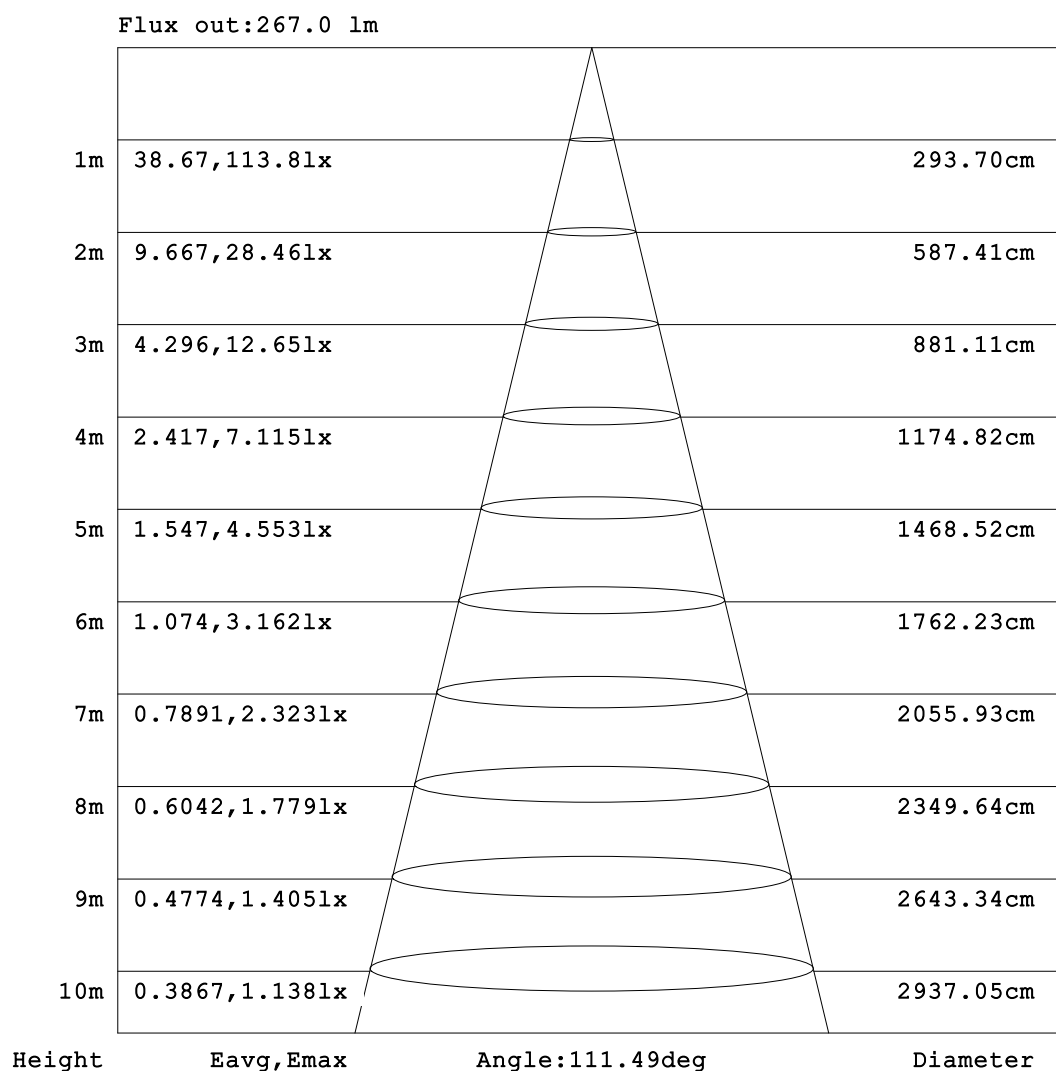
C Range: 0 - 360DEG  
C Interval: 30.0DEG  
Test Speed: HIGH  
Temperature:25.3℃  
Operators:  
Test Date:2025-02-18

γ Range: 0 - 180DEG  
γ Interval: 1.0DEG  
Test System:EVERFINE GO-2000B\_V1 SYSTEM V2.00.488  
Humidity:65.0%  
Test Distance:6.360m [K=1.0000]  
Remarks:



## AAI Figure

Test:U:24.00V I:0.4118A P:9.883W PF:1.000 Freq:0Hz Lamp Flux:627.42lx1 lm		
NAME: SF18-24V-3528-144-4500K-80	TYPE:	WEIGHT:
SPEC.:	DIM.: Length=1m	SERIAL No.:
MFR.: OLympia lighting	SUR.:	Shielding Angle:



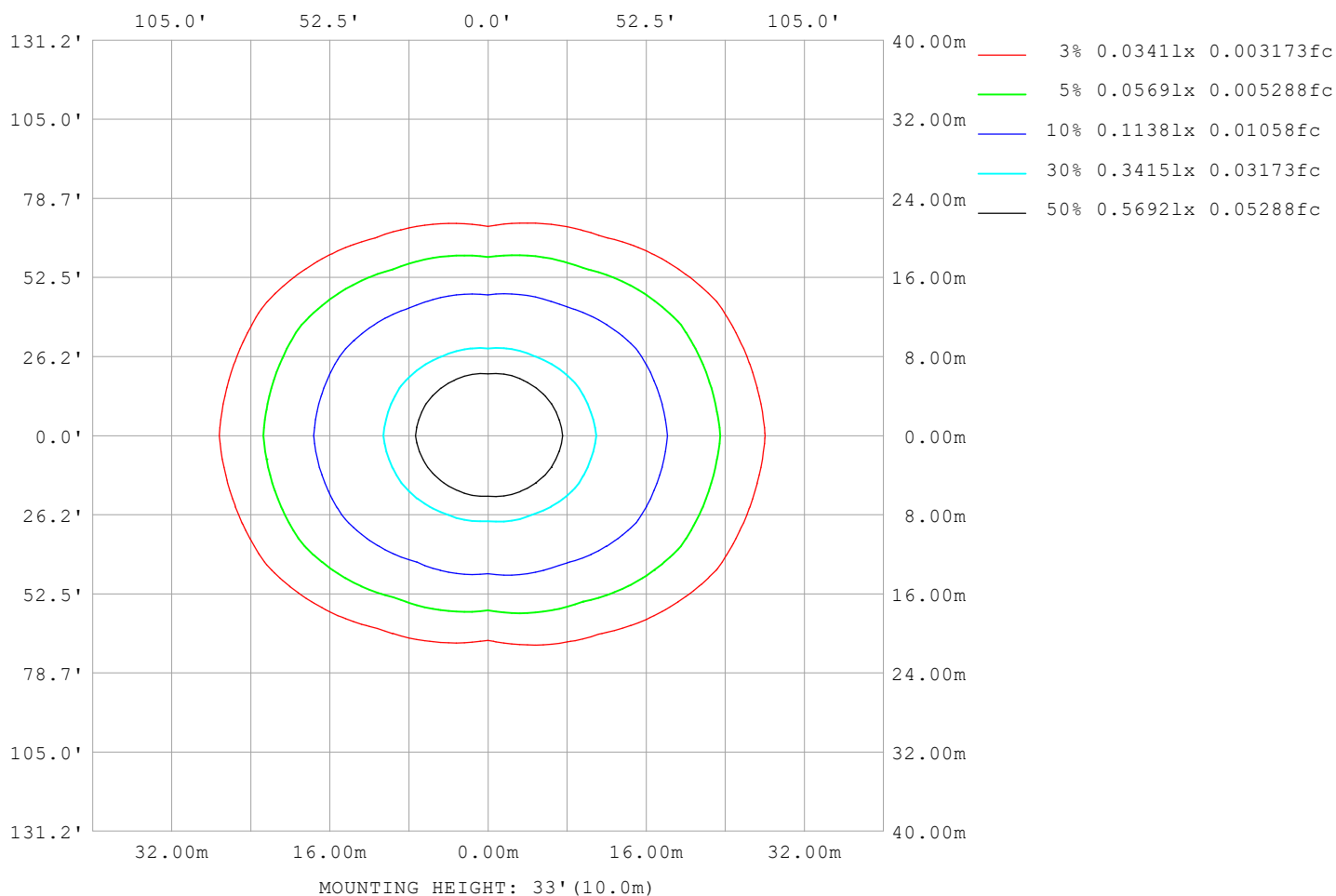
Note:The Curves indicate the illuminated area and the average illumination when the luminaire is at different distance.

C Range: 0 - 360DEG  
C Interval: 30.0DEG  
Test Speed: HIGH  
Temperature:25.3℃  
Operators:  
Test Date:2025-02-18

γ Range: 0 - 180DEG  
γ Interval: 1.0DEG  
Test System:EVERFINE GO-2000B\_V1 SYSTEM V2.00.488  
Humidity:65.0%  
Test Distance:6.360m [K=1.0000]  
Remarks:

## ISOLUX DIAGRAM

Test:U:24.00V I:0.4118A P:9.883W PF:1.000 Freq:0Hz Lamp Flux:627.42lx 1m		
NAME: SF18-24V-3528-144-4500K-80	TYPE:	WEIGHT:
SPEC.:	DIM.: Length=1m	SERIAL No.:
MFR.: OLympia lighting	SUR.:	Shielding Angle:



C Range: 0 - 360DEG  
C Interval: 30.0DEG  
Test Speed: HIGH  
Temperature:25.3℃  
Operators:  
Test Date:2025-02-18

γ Range: 0 - 180DEG  
γ Interval: 1.0DEG  
Test System:EVERFINE GO-2000B\_V1 SYSTEM V2.00.488  
Humidity:65.0%  
Test Distance:6.360m [K=1.0000]  
Remarks:

## LED Avg.L Report

Test:U:24.00V I:0.4118A P:9.883W PF:1.000 Freq:0Hz Lamp Flux:627.421x1 lm		
NAME: SF18-24V-3528-144-4500K-80	TYPE:	WEIGHT:
SPEC.:	DIM.: Length=1m	SERIAL No.:
MFR.: OLympia lighting	SUR.:	Shielding Angle:

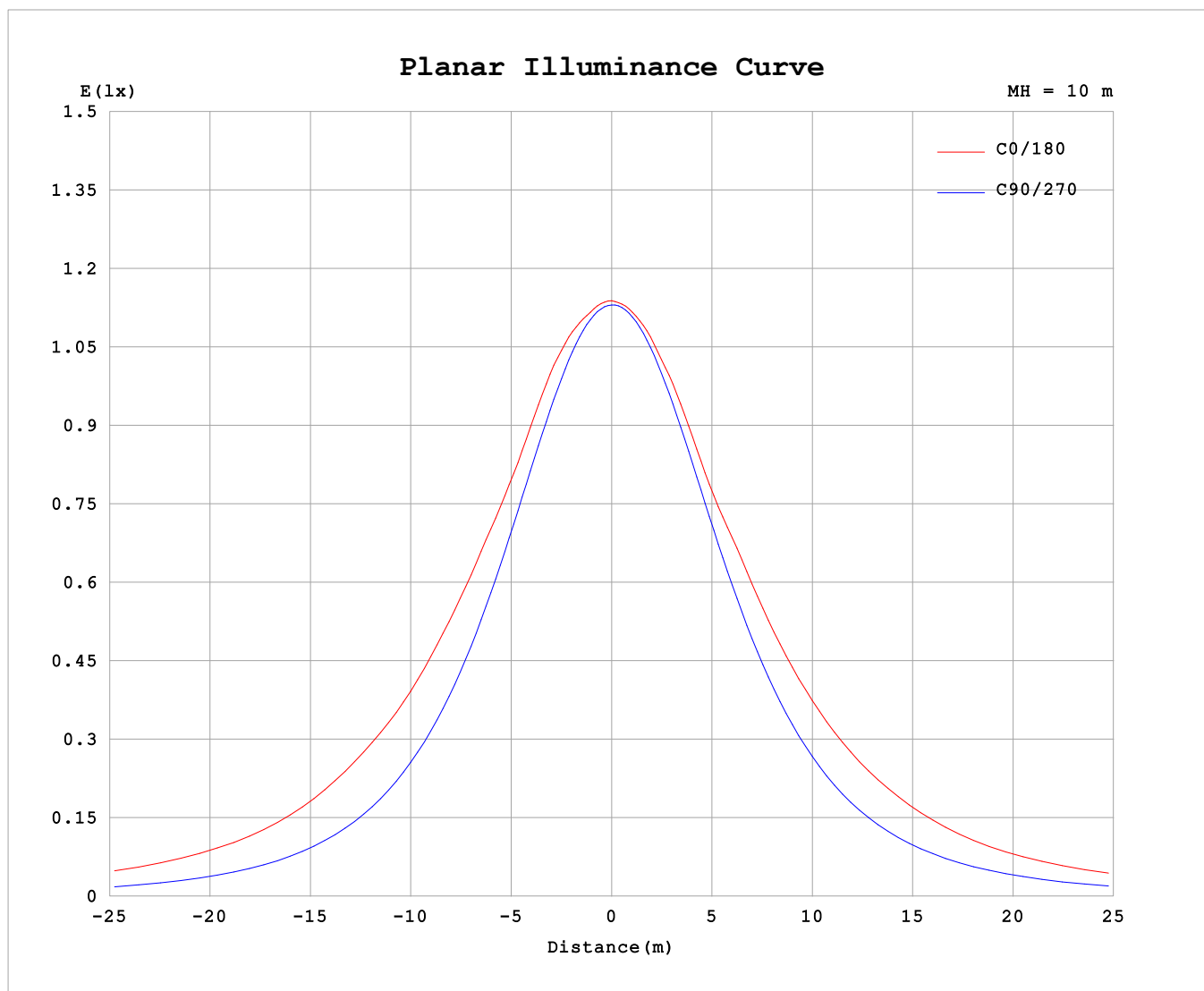
AvgL	cd/m2
L_0~180 (65) av	13651
L_0~180 (75) av	19111
L_0~180 (85) av	46700
L_90~270 (65) av	6177
L_90~270 (75) av	6108
L_90~270 (85) av	6924
L_45 (65) av	10273
L_45 (75) av	13694
L_45 (85) av	30361

Standard: GB/T 29293-2012

C Range: 0 - 360DEG  
C Interval: 30.0DEG  
Test Speed: HIGH  
Temperature:25.3℃  
Operators:  
Test Date:2025-02-18

γ Range: 0 - 180DEG  
γ Interval: 1.0DEG  
Test System:EVERFINE GO-2000B\_V1 SYSTEM V2.00.488  
Humidity:65.0%  
Test Distance:6.360m [K=1.0000]  
Remarks:

## Planar Illuminance Curve



C Range: 0 - 360DEG  
C Interval: 30.0DEG  
Test Speed: HIGH  
Temperature: 25.3 °C  
Operators:  
Test Date: 2025-02-18

$\gamma$  Range: 0 - 180DEG  
 $\gamma$  Interval: 1.0DEG  
Test System: EVERFINE GO-2000B\_V1 SYSTEM V2.00.488  
Humidity: 65.0%  
Test Distance: 6.360m [K=1.0000]  
Remarks:

## LUMINOUS DISTRIBUTION INTENSITY DATA

Test:U:24.00V I:0.4118A P:9.883W PF:1.000 Freq:0Hz Lamp Flux:627.421x1 lm		
NAME: SF18-24V-3528-144-4500K-80	TYPE:	WEIGHT:
SPEC.:	DIM.: Length=1m	SERIAL No.:
MFR.: OLYMPIA lighting	SUR.:	Shielding Angle:

Table--1

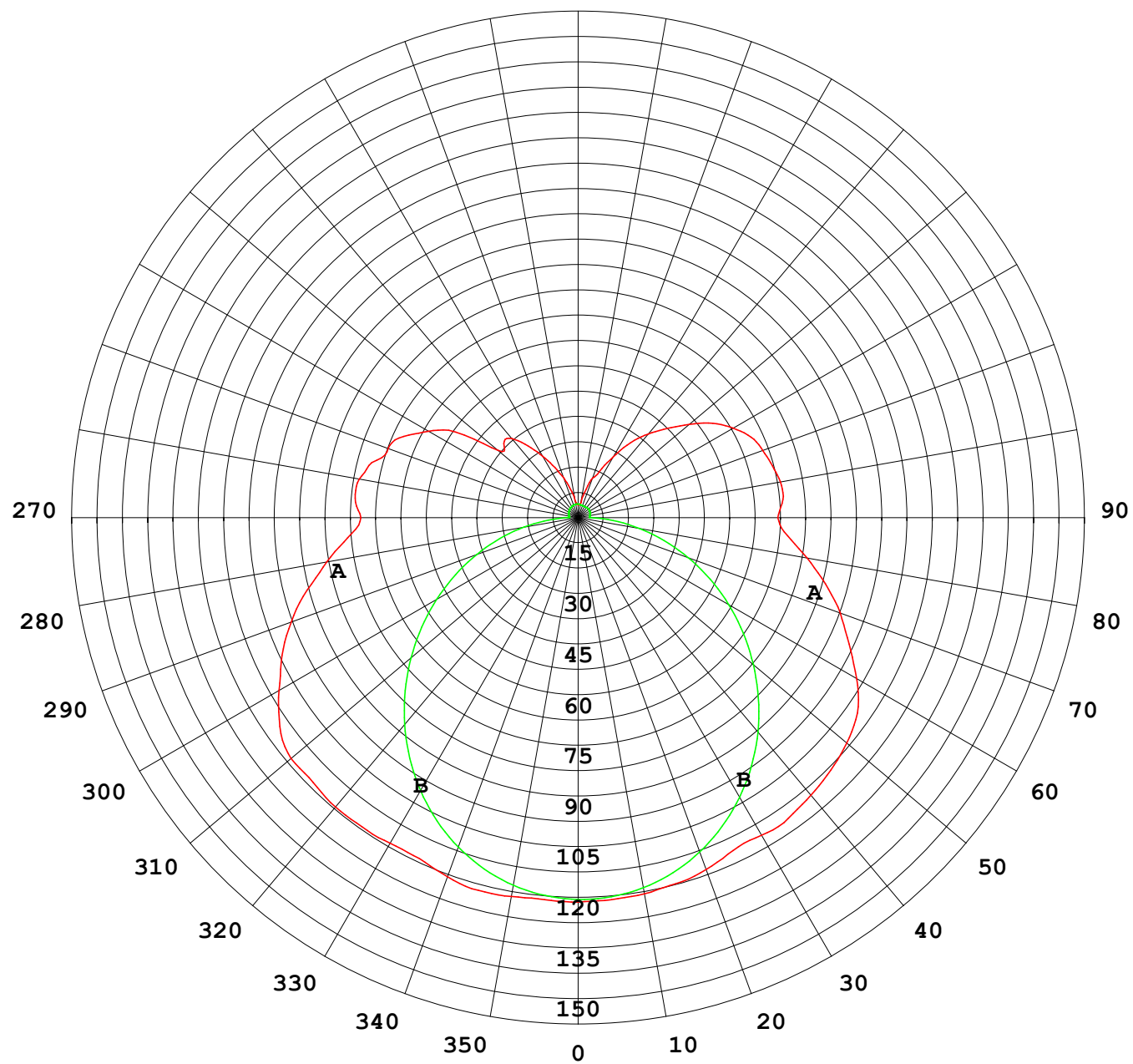
UNIT: cd

C (DEG) γ (DEG)	0	30	60	90	120	150	180	210	240	270	300	330							
0	113	113	113	113	113	113	113	113	113	113	113	113							
5	113	113	113	113	113	113	113	113	113	113	113	113							
10	113	113	111	111	111	112	113	112	112	112	112	113							
15	114	113	109	108	109	111	112	111	110	109	110	113							
20	113	111	107	104	106	109	110	110	107	106	108	112							
25	111	109	104	99.3	102	106	108	107	104	101	105	110							
30	111	106	100.0	93.7	97.4	103	108	105	100	95.9	102	107							
35	111	105	94.6	87.2	92.2	101	108	103	95.3	89.9	96.6	106							
40	111	103	88.5	80.2	86.4	99.0	107	101	89.8	83.1	90.7	104							
45	110	101	82.2	72.6	79.7	96.0	105	98.4	83.5	75.7	84.4	102							
50	111	98.3	75.6	64.8	72.9	92.9	103	95.2	77.0	68.0	77.8	99.1							
55	107	95.7	68.4	56.7	65.3	89.1	101	91.3	69.2	59.9	70.5	96.1							
60	102	91.9	61.9	48.5	58.4	84.1	94.9	86.1	62.4	51.7	63.6	92.3							
65	96.4	85.9	56.0	40.3	52.2	78.7	88.2	80.6	56.1	43.3	57.5	86.5							
70	90.1	79.5	50.1	32.1	46.0	72.3	82.3	74.3	49.7	34.8	51.2	79.9							
75	82.8	72.9	44.4	24.1	39.8	64.4	75.5	66.6	43.3	26.5	44.9	73.3							
80	75.3	64.9	38.2	16.4	32.9	57.0	68.5	59.0	36.4	18.4	38.5	65.2							
85	68.2	57.1	30.9	8.79	25.8	50.5	62.0	52.1	28.8	10.5	31.5	57.4							
90	64.1	50.9	24.6	2.70	21.4	47.1	59.0	47.7	23.2	3.65	25.0	51.1							
95	66.1	52.1	23.6	2.78	22.1	49.1	60.7	48.7	23.2	3.47	24.5	52.2							
100	65.6	53.2	19.2	2.83	22.2	51.1	60.6	50.5	23.4	3.54	20.0	53.9							
105	63.0	50.2	17.1	2.93	22.2	52.0	59.3	51.0	23.1	3.65	18.3	48.5							
110	59.7	47.6	11.2	3.08	22.3	51.1	58.0	50.1	23.7	3.81	18.8	44.8							
115	56.8	43.0	16.1	3.24	22.1	48.1	56.3	47.4	24.0	3.90	19.0	42.9							
120	51.0	36.2	17.3	3.36	20.5	44.0	52.8	44.2	22.5	3.91	17.7	39.6							
125	44.1	25.5	15.4	3.41	18.4	39.5	48.5	39.8	20.6	3.99	15.4	36.2							
130	30.9	29.0	13.6	3.48	16.0	35.3	42.8	35.6	18.0	4.05	13.5	32.8							
135	31.1	26.3	11.6	3.62	13.5	30.9	37.3	31.3	15.6	4.06	11.3	27.4							
140	30.5	22.1	9.63	3.75	11.4	26.4	32.3	27.2	13.5	3.95	9.32	21.6							
145	25.8	17.1	8.00	3.77	10.1	21.3	27.0	22.2	11.5	3.85	7.69	16.6							
150	20.9	13.2	6.54	3.92	8.52	16.5	20.6	18.0	9.58	3.83	6.28	12.7							
155	16.4	10.0	5.81	3.95	6.84	13.7	15.1	14.5	7.38	3.83	5.33	9.72							
160	12.4	7.40	5.32	3.99	5.44	10.6	12.5	11.1	5.72	3.84	5.04	7.10							
165	8.62	5.68	4.87	4.03	4.60	7.15	7.84	7.24	4.55	3.88	4.68	5.39							
170	5.05	4.95	4.53	4.07	4.35	5.01	4.32	4.99	4.26	3.93	4.50	4.77							
175	4.11	4.47	4.46	4.09	4.14	4.30	3.84	4.27	4.04	4.01	4.47	4.52							
180	3.88	4.13	4.10	4.09	4.17	4.18	3.86	4.12	4.09	4.09	4.17	4.19							

C Range: 0 - 360DEG  
C Interval: 30.0DEG  
Test Speed: HIGH  
Temperature:25.3℃  
Operators:  
Test Date:2025-02-18

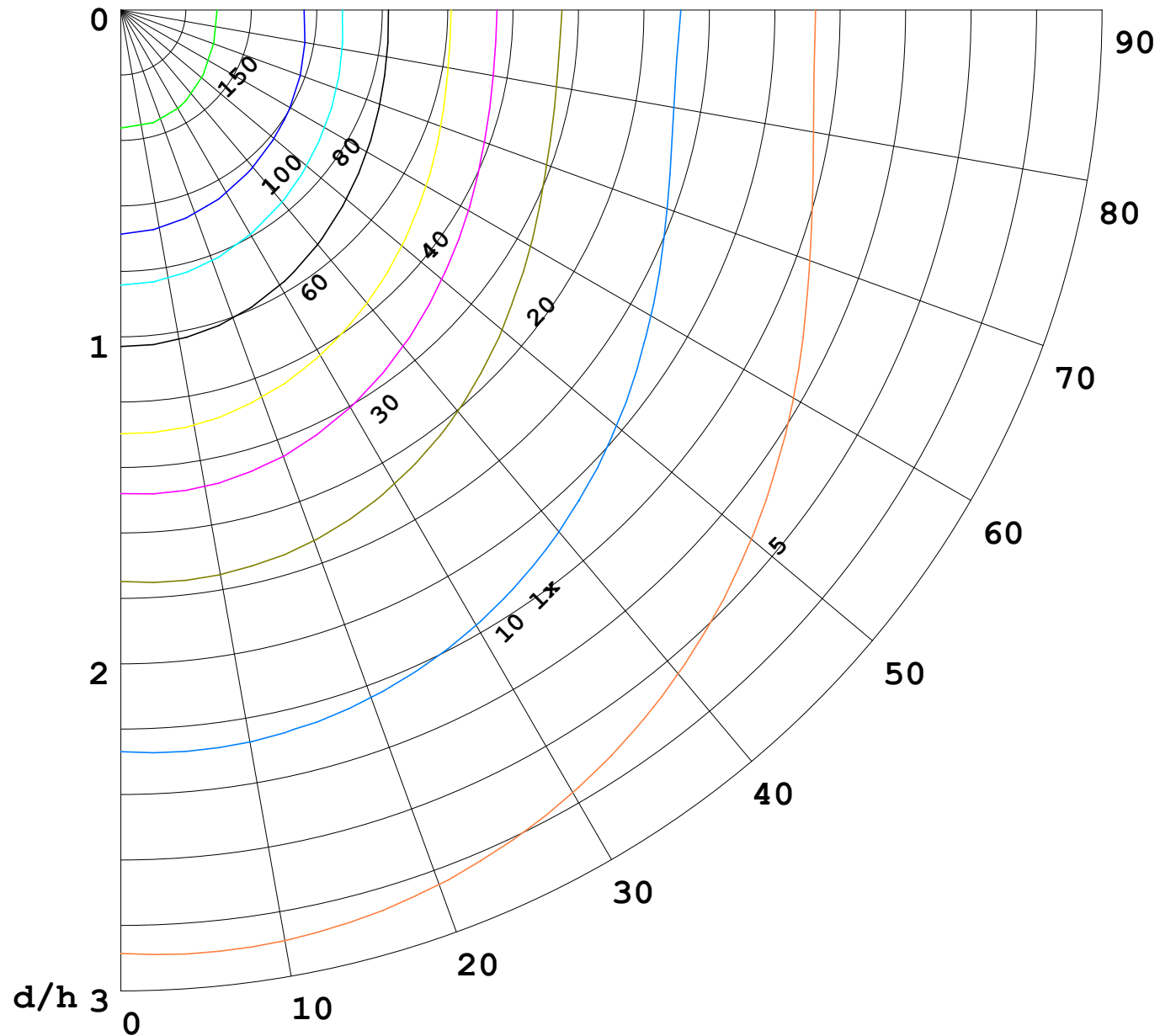
γ Range: 0 - 180DEG  
γ Interval: 1.0DEG  
Test System:EVERFINE GO-2000B\_V1 SYSTEM V2.00.488  
Humidity:65.0%  
Test Distance:6.360m [K=1.0000]  
Remarks:

I (cd)



1000 lm

$\kappa = 1$



F = 1000 lm  
 K = 0.7  
 Hcc = 0.8 m  
 Hfc = 0.0 m  
 Eave = 100 lx

	Pcc	Pw	Pfc
—————	70	50	30
—————	50	30	20

