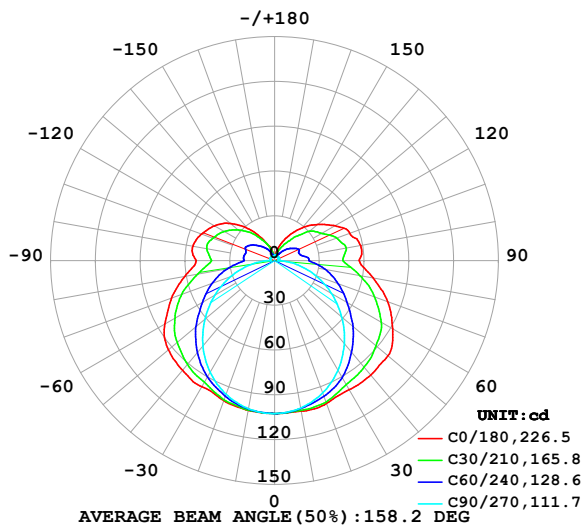


LUMINAIRE PHOTOMETRIC TEST REPORT

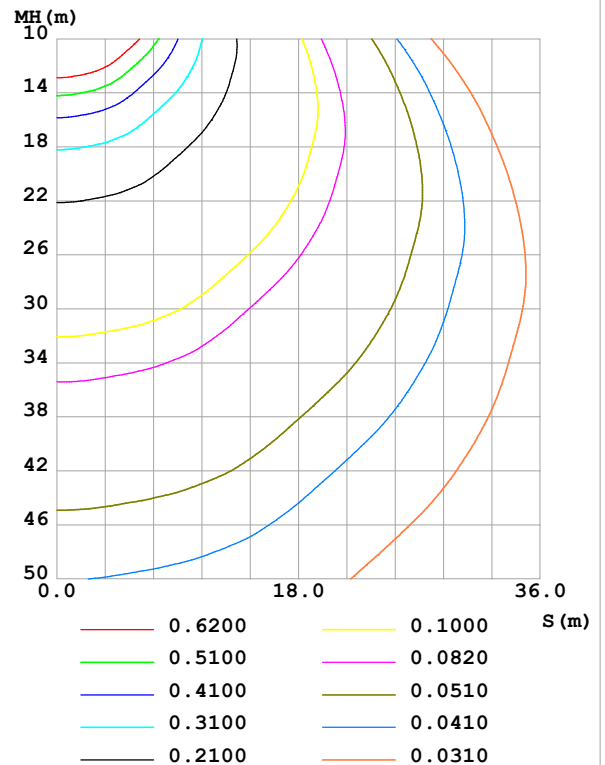
Test:U:24.00V I:0.4119A P:9.886W PF:1.000 Freq:0Hz Lamp Flux:565.339x1 lm		
NAME: SF18-24V-3528-144-2200K-80	TYPE:	WEIGHT:
SPEC.:	DIM.: Length=1m	SERIAL No.:
MFR.: Olym pia lighting	SUR.:	Shielding Angle:

DATA OF LAMP		PHOTOMETRIC DATA				Eff: 57.19 lm/W
MODEL	3528	I _{max} (cd)	102.8	S/MH(C0/180)	1.46	
NOMINAL POWER(W)	10	LOR(%)	100.0	S/MH(C90/270)	1.25	
RATED VOLTAGE(V)	24	TOTAL FLUX(lm)	565.34	η UP,DN(C0-180)	13.0,37.0	
NOMINAL FLUX(lm)	565.339	CIE CLASS	SEMI-D.	η UP,DN(C180-360)	12.9,37.1	
LAMPS INSIDE	1	η up (%)	26.0	CIBSE SHR NOM	1.50	
TEST VOLTAGE(V)		η down (%)	74.0	CIBSE SHR MAX	1.55	

LUMINOUS INTENSITY DISTRIBUTION DIAGRAM



C0 PLANE ISOLUX DIAGRAM (UNIT:lx)



C Range: 0 - 360DEG
C Interval: 30.0DEG
Test Speed: HIGH
Temperature:25.3℃
Operators:
Test Date:2025-02-15

γ Range: 0 - 180DEG
γ Interval: 1.0DEG
Test System:EVERFINE GO-2000B_V1 SYSTEM V2.00.488
Humidity:65.0%
Test Distance:6.360m [K=1.0000]
Remarks:

ZONAL FLUX DIAGRAM

ZONAL FLUX DIAGRAM:

γ	C0	C45	C90	C135	C180	C225	C270	C315	γ	Φ zone	Φ total	%lum, lamp
10	102.5	101.3	100.3	101.1	102.0	101.4	100.8	101.6	0- 10	9.724	9.724	1.72,1.72
20	101.9	98.81	94.29	97.23	99.78	97.94	95.32	99.37	10- 20	28.29	38.02	6.72,6.72
30	99.93	93.31	84.89	90.83	97.63	92.09	86.46	94.06	20- 30	44.04	82.06	14.5,14.5
40	100.2	86.77	72.69	83.90	95.97	85.71	74.75	87.57	30- 40	56.09	138.2	24.4,24.4
50	99.30	78.67	58.74	74.68	92.92	77.06	60.87	79.37	40- 50	63.34	201.5	35.6,35.6
60	91.33	69.36	44.03	64.01	84.97	66.53	46.18	69.72	50- 60	65.02	266.5	47.1,47.1
70	80.62	58.32	29.18	53.00	73.57	55.45	31.19	58.37	60- 70	60.81	327.3	57.9,57.9
80	67.04	46.30	14.86	40.28	61.10	42.38	16.42	45.95	70- 80	51.82	379.1	67.1,67.1
90	56.76	34.38	2.559	30.34	52.62	31.47	3.185	33.37	80- 90	39.45	418.6	74,74
100	58.59	33.94	2.580	32.48	55.68	33.54	3.117	32.92	90-100	34.80	453.4	80.2,80.2
110	53.81	30.85	2.776	32.21	52.20	32.43	3.314	29.20	100-110	33.03	486.4	86,86
120	46.79	26.51	2.967	28.95	46.68	29.64	3.404	25.64	110-120	28.65	515.1	91.1,91.1
130	37.78	21.71	3.089	22.71	38.68	24.07	3.522	19.43	120-130	21.73	536.8	95,95
140	28.73	14.31	3.294	16.69	28.24	18.09	3.427	13.90	130-140	14.57	551.4	97.5,97.5
150	19.40	8.652	3.268	11.14	17.56	11.97	3.352	8.728	140-150	8.207	559.6	99,99
160	11.49	5.418	3.366	7.001	10.29	7.241	3.326	5.552	150-160	3.917	563.5	99.7,99.7
170	4.526	3.997	3.482	4.018	3.788	4.005	3.404	4.125	160-170	1.478	565.0	99.9,99.9
180	3.430	3.599	3.546	3.634	3.407	3.589	3.531	3.652	170-180	0.3584	565.3	100,100
DEG	LUMINOUS INTENSITY:cd									UNIT:lm		

Conical surface Flux(90deg): 169.25 lm

%lum = 29.9%

%lamp = 29.9%

Conical surface Flux(130deg): 297.76 lm

%lum = 52.7%

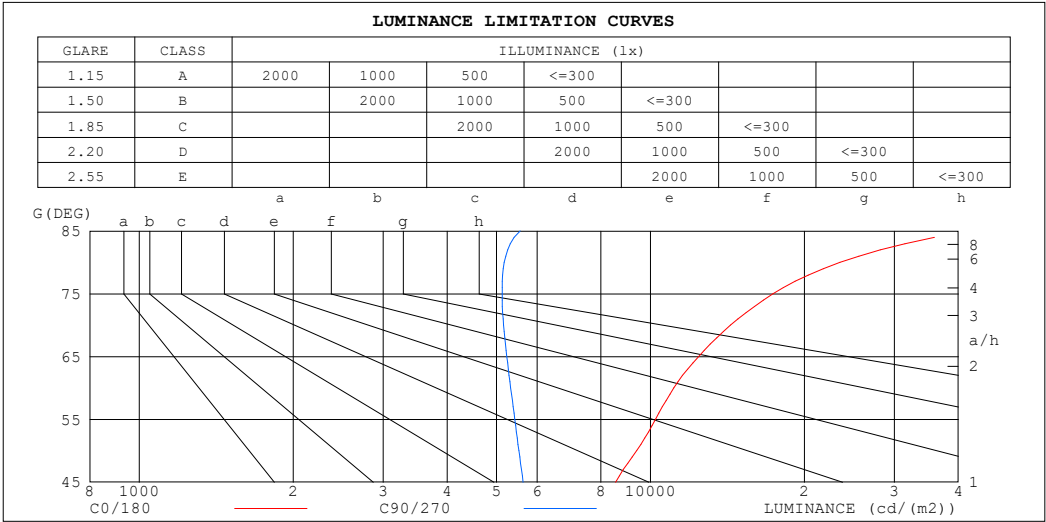
%lamp = 52.7%

C Range: 0 - 360DEG
 C Interval: 30.0DEG
 Test Speed: HIGH
 Temperature:25.3℃
 Operators:
 Test Date:2025-02-15

γ Range: 0 - 180DEG
 γ Interval: 1.0DEG
 Test System:EVERFINE GO-2000B_V1 SYSTEM V2.00.488
 Humidity:65.0%
 Test Distance:6.360m [K=1.0000]
 Remarks:

LUMINANCE LIMITATION CURVES

Test:U:24.00V I:0.4119A P:9.886W PF:1.000 Freq:0Hz Lamp Flux:565.339x1 lm		
NAME: SF18-24V-3528-144-2200K-80	TYPE:	WEIGHT:
SPEC.:	DIM.: Length=1m	SERIAL No.:
MFR.: OLympia lighting	SUR.:	Shielding Angle:



LUMINANCE cd/(m2)		
G (DEG)	C0/180	C90/270
85	42229	5560
80	23486	5176
75	17362	5125
70	14339	5161
65	12422	5235
60	11111	5326
55	10225	5426
50	9397	5528
45	8546	5633

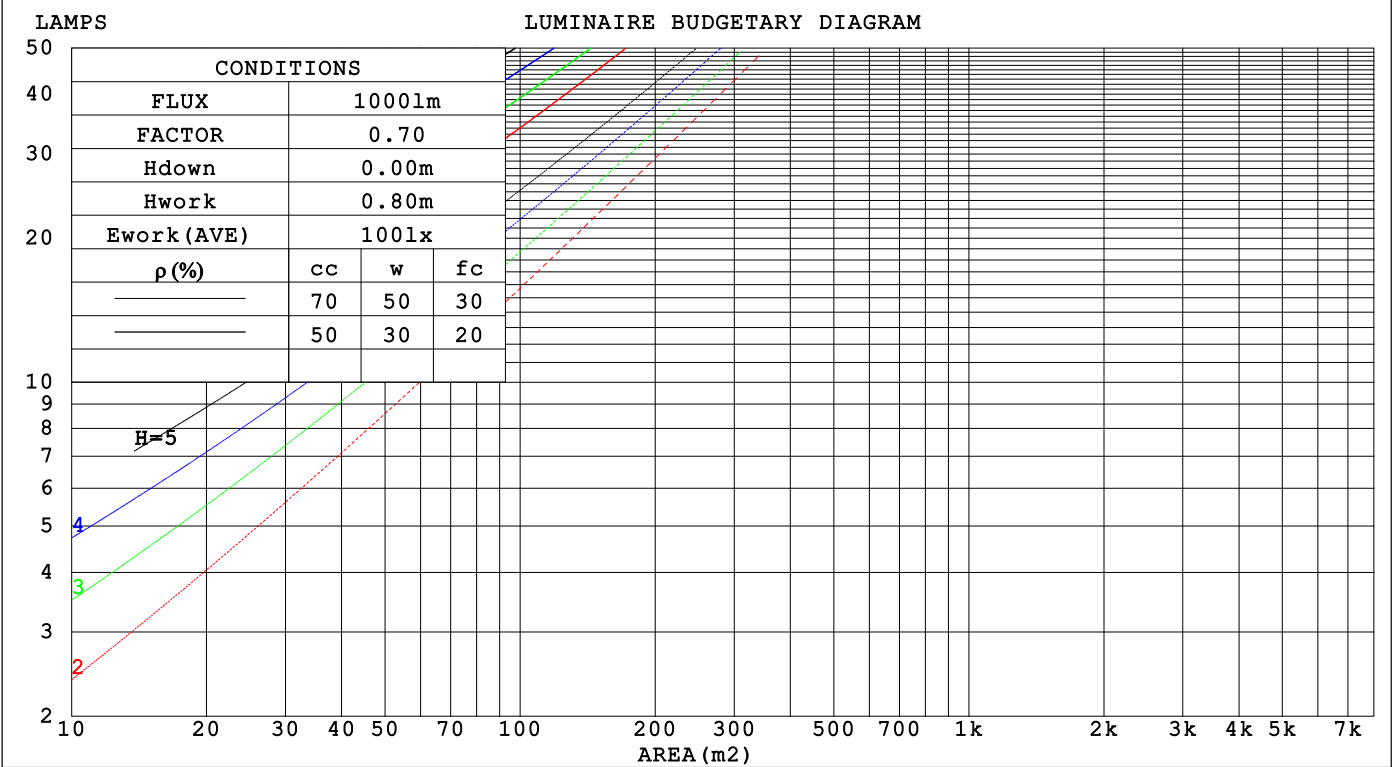
C Range: 0 - 360DEG
C Interval: 30.0DEG
Test Speed: HIGH
Temperature:25.3℃
Operators:
Test Date:2025-02-15

γ Range: 0 - 180DEG
γ Interval: 1.0DEG
Test System:EVERFINE GO-2000B_V1 SYSTEM V2.00.488
Humidity:65.0%
Test Distance:6.360m [K=1.0000]
Remarks:

CU AND LUMINAIRE BUDGETARY ESTIMATE DIAGRAM

Test:U:24.00V I:0.4119A P:9.886W PF:1.000 Freq:0Hz		
Lamp Flux:565.339x1 lm		
NAME: SF18-24V-3528-144-2200K-80	TYPE:	WEIGHT:
SPEC.:	DIM.: Length=1m	SERIAL No.:
MFR.: OLYMPIA lighting	SUR.:	Shielding Angle:

pcc	80%			70%			50%			30%			10%			0
pw	50%	30%	10%	50%	30%	10%	50%	30%	10%	50%	30%	10%	50%	30%	10%	0
pfc	20%			20%			20%			20%			20%			0
RCR	RCR:Room Cavity Ratio															



C Range: 0 - 360DEG
C Interval: 30.0DEG
Test Speed: HIGH
Temperature:25.3℃
Operators:
Test Date:2025-02-15

γ Range: 0 - 180DEG
γ Interval: 1.0DEG
Test System:EVERFINE GO-2000B_V1 SYSTEM V2.00.488
Humidity:65.0%
Test Distance:6.360m [K=1.0000]
Remarks:

WEC AND CCEC

Test:U:24.00V I:0.4119A P:9.886W PF:1.000 Freq:0Hz Lamp Flux:565.339x1 lm		
NAME: SF18-24V-3528-144-2200K-80	TYPE:	WEIGHT:
SPEC.:	DIM.: Length=1m	SERIAL No.:
MFR.: OLympia lighting	SUR.:	Shielding Angle:

pcc	80%			70%			50%			30%			10%			0														
pw	50%	30%	10%	50%	30%	10%	50%	30%	10%	50%	30%	10%	50%	30%	10%	0														
pfc	20%			20%			20%			20%			20%			0														
RCR	RCR:Room Cavity Ratio															Wall Exitance Coefficients(WEC)														
0.0																														
1.0	.380	.216	.068	.365	.208	.066	.337	.193	.062	.311	.179	.058	.287	.166	.054															
2.0	.330	.181	.055	.316	.174	.054	.290	.161	.050	.267	.150	.047	.245	.138	.044															
3.0	.293	.156	.047	.281	.150	.045	.257	.139	.042	.236	.129	.040	.216	.119	.037															
4.0	.264	.137	.040	.253	.132	.039	.231	.123	.037	.212	.114	.034	.193	.105	.032															
5.0	.240	.122	.035	.230	.118	.034	.210	.109	.032	.192	.101	.030	.175	.094	.028															
6.0	.220	.110	.032	.210	.106	.031	.193	.099	.029	.176	.092	.027	.161	.085	.025															
7.0	.203	.100	.028	.194	.097	.028	.178	.090	.026	.163	.083	.024	.148	.077	.023															
8.0	.188	.092	.026	.180	.089	.025	.165	.082	.024	.151	.076	.022	.138	.071	.021															
9.0	.175	.085	.024	.168	.082	.023	.154	.076	.022	.141	.071	.020	.128	.065	.019															
10.0	.164	.079	.022	.157	.076	.021	.144	.071	.020	.132	.066	.019	.121	.061	.017															

pcc	80%			70%			50%			30%			10%			0
pw	50%	30%	10%	50%	30%	10%	50%	30%	10%	50%	30%	10%	50%	30%	10%	0
pfc	20%			20%			20%			20%			20%			0
RCR	RCR:Room Cavity Ratio						Ceiling Cavity Exitance Coefficients (CCEC)									
0.0	.388	.388	.388	.332	.332	.332	.226	.226	.226	.130	.130	.130	.042	.042	.042	
1.0	.385	.355	.328	.329	.305	.282	.225	.210	.195	.130	.121	.114	.041	.039	.037	
2.0	.378	.332	.294	.324	.286	.254	.222	.198	.177	.128	.115	.104	.041	.037	.034	
3.0	.371	.316	.273	.318	.273	.237	.218	.190	.166	.126	.111	.098	.040	.036	.032	
4.0	.363	.304	.259	.312	.263	.225	.214	.183	.158	.124	.107	.094	.040	.035	.031	
5.0	.356	.294	.249	.305	.255	.217	.210	.178	.153	.122	.104	.091	.039	.034	.030	
6.0	.348	.287	.242	.299	.248	.211	.207	.174	.149	.120	.102	.089	.039	.033	.029	
7.0	.341	.280	.237	.294	.243	.207	.203	.170	.146	.118	.100	.087	.038	.033	.029	
8.0	.335	.275	.233	.288	.238	.203	.199	.167	.144	.116	.099	.086	.038	.032	.028	
9.0	.329	.270	.230	.283	.234	.201	.196	.165	.143	.114	.097	.085	.037	.032	.028	
10.0	.323	.266	.228	.278	.231	.199	.193	.162	.141	.113	.096	.084	.037	.032	.028	

C Range: 0 - 360DEG
C Interval: 30.0DEG
Test Speed: HIGH
Temperature:25.3℃
Operators:
Test Date:2025-02-15

γ Range: 0 - 180DEG
γ Interval: 1.0DEG
Test System:EVERFINE GO-2000B_V1 SYSTEM V2.00.488
Humidity:65.0%
Test Distance:6.360m [K=1.0000]
Remarks:

UGR(Unified Glare Rating) Table

Test:U:24.00V I:0.4119A P:9.886W PF:1.000 Freq:0Hz Lamp Flux:565.339x1 lm											
NAME: SF18-24V-3528-144-2200K-80						TYPE:		WEIGHT:			
SPEC.:						DIM.: Length=1m		SERIAL No.:			
MFR.: OLympia lighting						SUR.:		Shielding Angle:			
ceiling/cavity	0.7	0.7	0.5	0.5	0.3	0.7	0.7	0.5	0.5	0.3	
walls	0.5	0.3	0.5	0.3	0.3	0.5	0.3	0.5	0.3	0.3	
working plane	0.2	0.2	0.2	0.2	0.2	0.2	0.2	0.2	0.2	0.2	
Room dimensions		Viewed crosswise					Viewed endwise				
x = 2H y = 2H	2H	21.9	23.2	22.5	23.8	24.5	18.8	20.1	19.4	20.7	21.4
	3H	24.7	25.8	25.3	26.5	27.2	20.4	21.6	21.1	22.3	23.0
	4H	26.1	27.3	26.8	27.9	28.7	21.2	22.3	21.9	23.0	23.8
	6H	27.7	28.8	28.4	29.5	30.3	21.8	22.9	22.5	23.6	24.4
	8H	28.6	29.6	29.3	30.3	31.1	22.1	23.1	22.8	23.8	24.6
	12H	29.6	30.6	30.3	31.3	32.1	22.3	23.3	23.0	24.0	24.8
4H	2H	22.4	23.5	23.0	24.1	24.9	20.2	21.3	20.8	21.9	22.7
	3H	25.4	26.4	26.1	27.1	27.9	22.0	23.0	22.7	23.7	24.5
	4H	27.1	28.0	27.8	28.7	29.6	23.0	23.9	23.7	24.6	25.4
	6H	28.9	29.7	29.6	30.4	31.3	23.8	24.6	24.5	25.3	26.2
	8H	29.9	30.6	30.6	31.4	32.3	24.1	24.9	24.9	25.6	26.5
	12H	31.0	31.7	31.8	32.5	33.4	24.4	25.1	25.2	25.9	26.8
8H	4H	27.4	28.1	28.1	28.9	29.8	24.2	24.9	24.9	25.7	26.6
	6H	29.5	30.1	30.3	30.9	31.9	25.3	26.0	26.1	26.8	27.7
	8H	30.7	31.3	31.5	32.1	33.0	25.9	26.4	26.7	27.2	28.2
	12H	32.1	32.6	32.9	33.4	34.4	26.4	26.8	27.2	27.7	28.6
12H	4H	27.4	28.1	28.2	28.9	29.8	24.6	25.2	25.3	26.0	26.9
	6H	29.6	30.2	30.4	31.0	31.9	25.9	26.5	26.7	27.3	28.3
	8H	30.9	31.4	31.7	32.2	33.2	26.7	27.1	27.5	28.0	28.9
Variations with the observer position at spacings(CIE Pub.117):											
S = 1.0H		+ 0.1 / - 0.1					+ 0.1 / - 0.1				
1.5H		+ 0.2 / - 0.2					+ 0.2 / - 0.3				
2.0H		+ 0.2 / - 0.3					+ 0.2 / - 0.4				

CIE Pub.117, 565.3 lm Total Lamp Luminous Flux Correct (8log(F/F0) = -2.0)
Area: 0.0165 m2

C Range: 0 - 360DEG
C Interval: 30.0DEG
Test Speed: HIGH
Temperature:25.3℃
Operators:
Test Date:2025-02-15

γ Range: 0 - 180DEG
γ Interval: 1.0DEG
Test System:EVERFINE GO-2000B_V1 SYSTEM V2.00.488
Humidity:65.0%
Test Distance:6.360m [K=1.0000]
Remarks:

UTILIZATION FACTORS TABLE

Test:U:24.00V I:0.4119A P:9.886W PF:1.000 Freq:0Hz Lamp Flux:565.339x1 lm		
NAME: SF18-24V-3528-144-2200K-80	TYPE:	WEIGHT:
SPEC.:	DIM.: Length=1m	SERIAL No.:
MFR.: OLympia lighting	SUR.:	Shielding Angle:

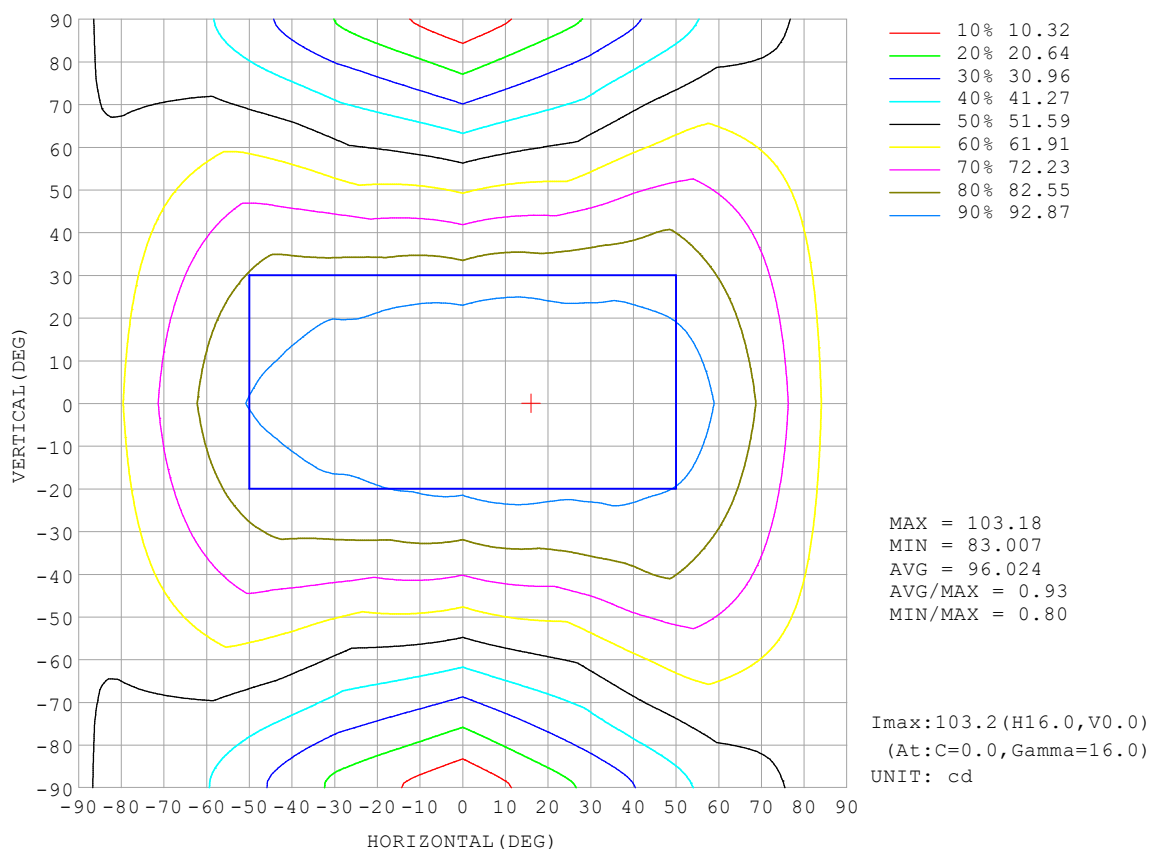
REFLECTANCE										
Ceiling	0.8	0.8	0.8	0.7	0.7	0.7	0.5	0.5	0.5	0
Walls	0.7	0.5	0.3	0.7	0.5	0.3	0.7	0.5	0.3	0
Working plane	0.2	0.2	0.2	0.2	0.2	0.2	0.2	0.2	0.2	0
ROOM INDEX	UTILIZATION FACTORS (PERCENT) $k(RI) \times RCR = 5$									
$k = 0.60$	45	33	25	44	32	25	41	31	24	18
0.80	54	41	33	52	40	32	49	38	31	23
1.00	62	49	40	59	47	39	55	47	38	28
1.25	69	56	47	66	54	46	61	51	44	33
1.50	74	61	53	71	59	51	65	56	49	37
2.00	81	70	62	78	67	60	71	63	56	43
2.50	86	76	67	82	73	65	75	67	61	46
3.00	90	80	73	86	77	70	78	71	65	50
4.00	95	87	80	90	83	77	82	76	71	54
5.00	98	91	85	93	87	81	84	79	75	57
ROOM INDEX	UF (total)									Direct
According to DIN EN 13032-2 2004			Suspended					SHRNOM = 1.25		

C Range: 0 - 360DEG
 C Interval: 30.0DEG
 Test Speed: HIGH
 Temperature: 25.3 °C
 Operators:
 Test Date: 2025-02-15

γ Range: 0 - 180DEG
 γ Interval: 1.0DEG
 Test System: EVERFINE GO-2000B_V1 SYSTEM V2.00.488
 Humidity: 65.0%
 Test Distance: 6.360m [K=1.0000]
 Remarks:

ISOCANDELA DIAGRAM

Test:U:24.00V I:0.4119A P:9.886W PF:1.000 Freq:0Hz Lamp Flux:565.339x1 lm		
NAME: SF18-24V-3528-144-2200K-80	TYPE:	WEIGHT:
SPEC.:	DIM.: Length=1m	SERIAL No.:
MFR.: OLympia lighting	SUR.:	Shielding Angle:

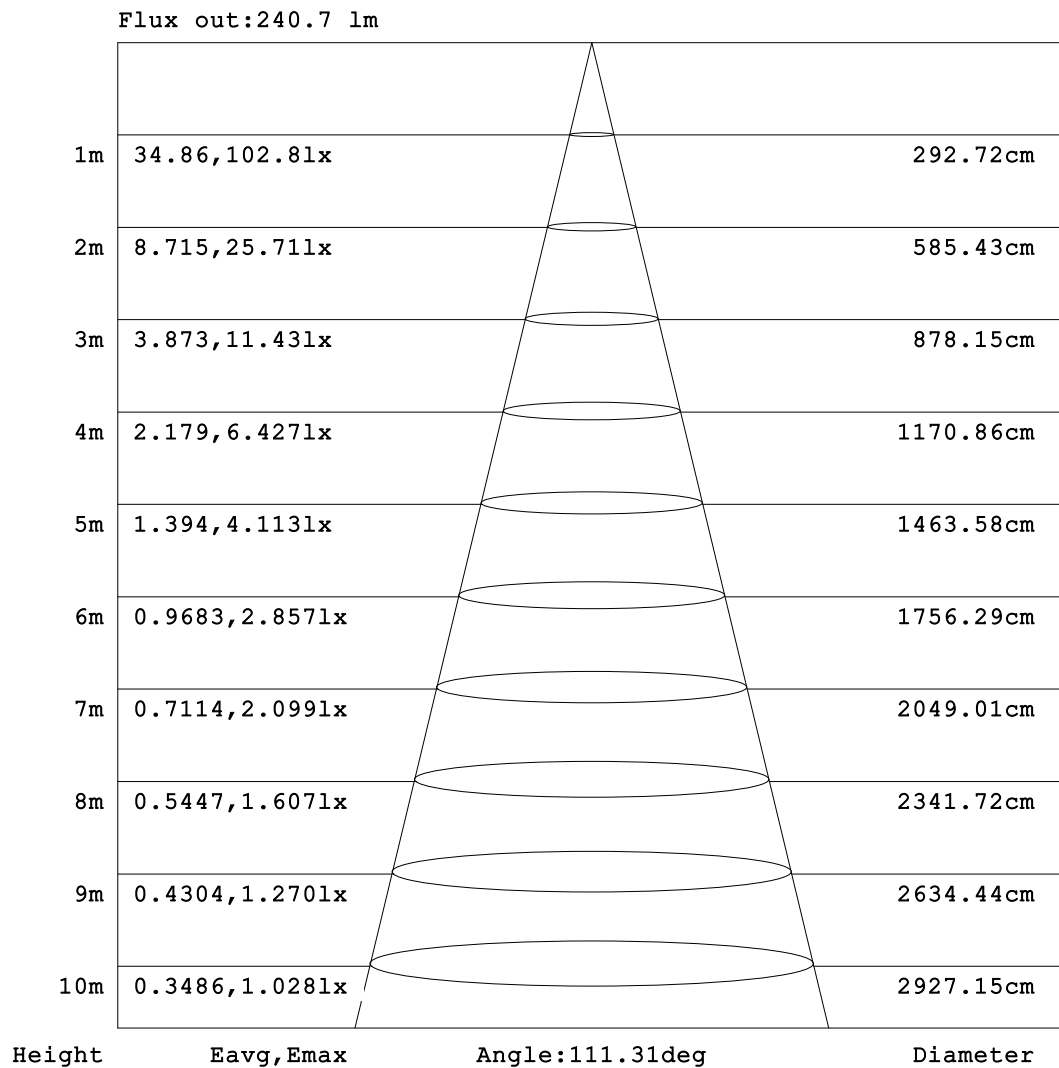


C Range: 0 - 360DEG
C Interval: 30.0DEG
Test Speed: HIGH
Temperature:25.3℃
Operators:
Test Date:2025-02-15

γ Range: 0 - 180DEG
γ Interval: 1.0DEG
Test System:EVERFINE GO-2000B_V1 SYSTEM V2.00.488
Humidity:65.0%
Test Distance:6.360m [K=1.0000]
Remarks:

AAI Figure

Test:U:24.00V I:0.4119A P:9.886W PF:1.000 Freq:0Hz Lamp Flux:565.339x1 lm		
NAME: SF18-24V-3528-144-2200K-80	TYPE:	WEIGHT:
SPEC.:	DIM.: Length=1m	SERIAL No.:
MFR.: OLympia lighting	SUR.:	Shielding Angle:



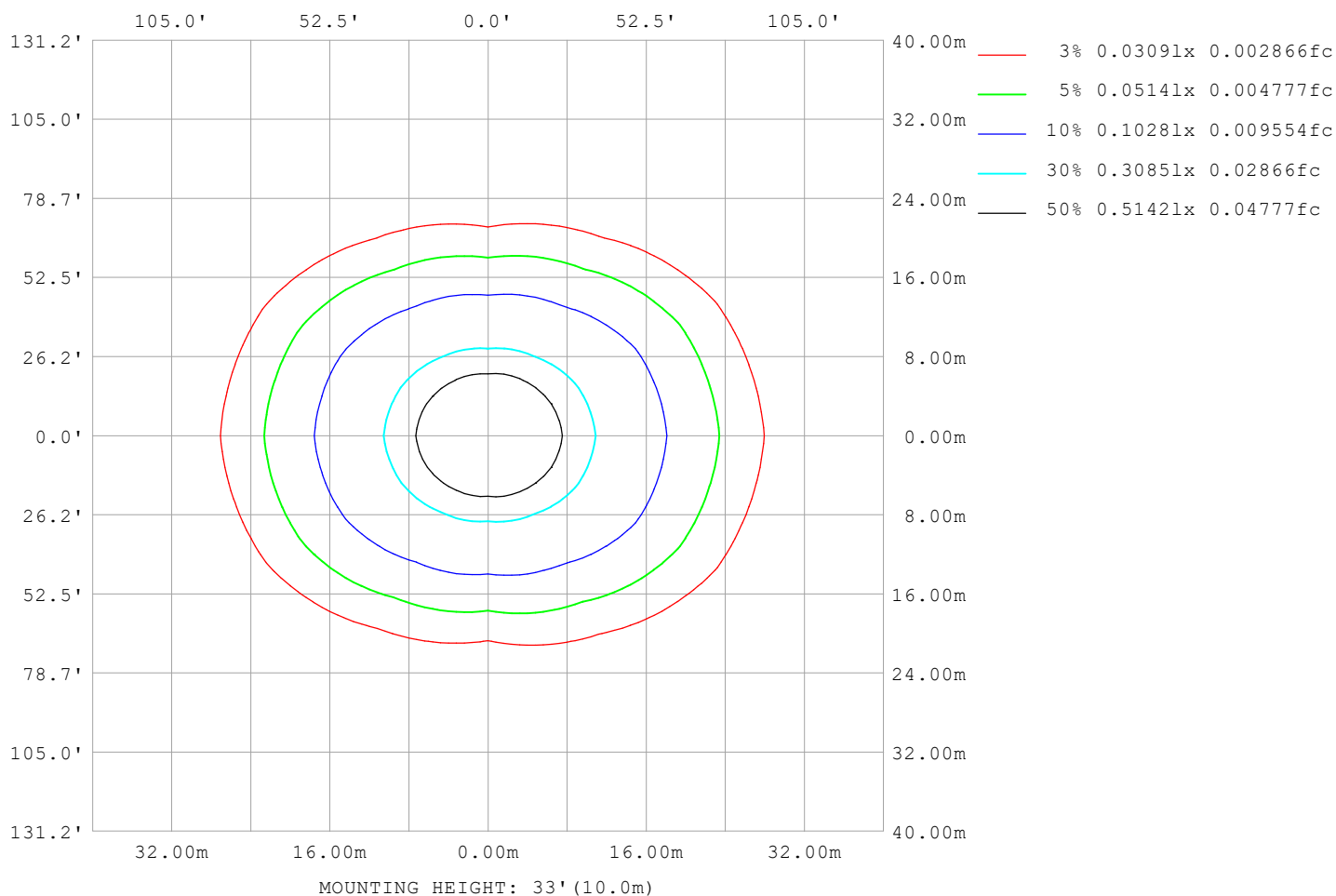
Note: The Curves indicate the illuminated area and the average illumination when the luminaire is at different distance.

C Range: 0 - 360DEG
C Interval: 30.0DEG
Test Speed: HIGH
Temperature: 25.3°C
Operators:
Test Date: 2025-02-15

γ Range: 0 - 180DEG
γ Interval: 1.0DEG
Test System: EVERFINE GO-2000B_V1 SYSTEM V2.00.488
Humidity: 65.0%
Test Distance: 6.360m [K=1.0000]
Remarks:

ISOLUX DIAGRAM

Test:U:24.00V I:0.4119A P:9.886W PF:1.000 Freq:0Hz Lamp Flux:565.339x1 lm		
NAME: SF18-24V-3528-144-2200K-80	TYPE:	WEIGHT:
SPEC.:	DIM.: Length=1m	SERIAL No.:
MFR.: OLympia lighting	SUR.:	Shielding Angle:



C Range: 0 - 360DEG
C Interval: 30.0DEG
Test Speed: HIGH
Temperature: 25.3°C
Operators:
Test Date: 2025-02-15

γ Range: 0 - 180DEG
γ Interval: 1.0DEG
Test System: EVERFINE GO-2000B_V1 SYSTEM V2.00.488
Humidity: 65.0%
Test Distance: 6.360m [K=1.0000]
Remarks:

LED Avg.L Report

Test:U:24.00V I:0.4119A P:9.886W PF:1.000 Freq:0Hz Lamp Flux:565.339x1 lm		
NAME: SF18-24V-3528-144-2200K-80	TYPE:	WEIGHT:
SPEC.:	DIM.: Length=1m	SERIAL No.:
MFR.: OLympia lighting	SUR.:	Shielding Angle:

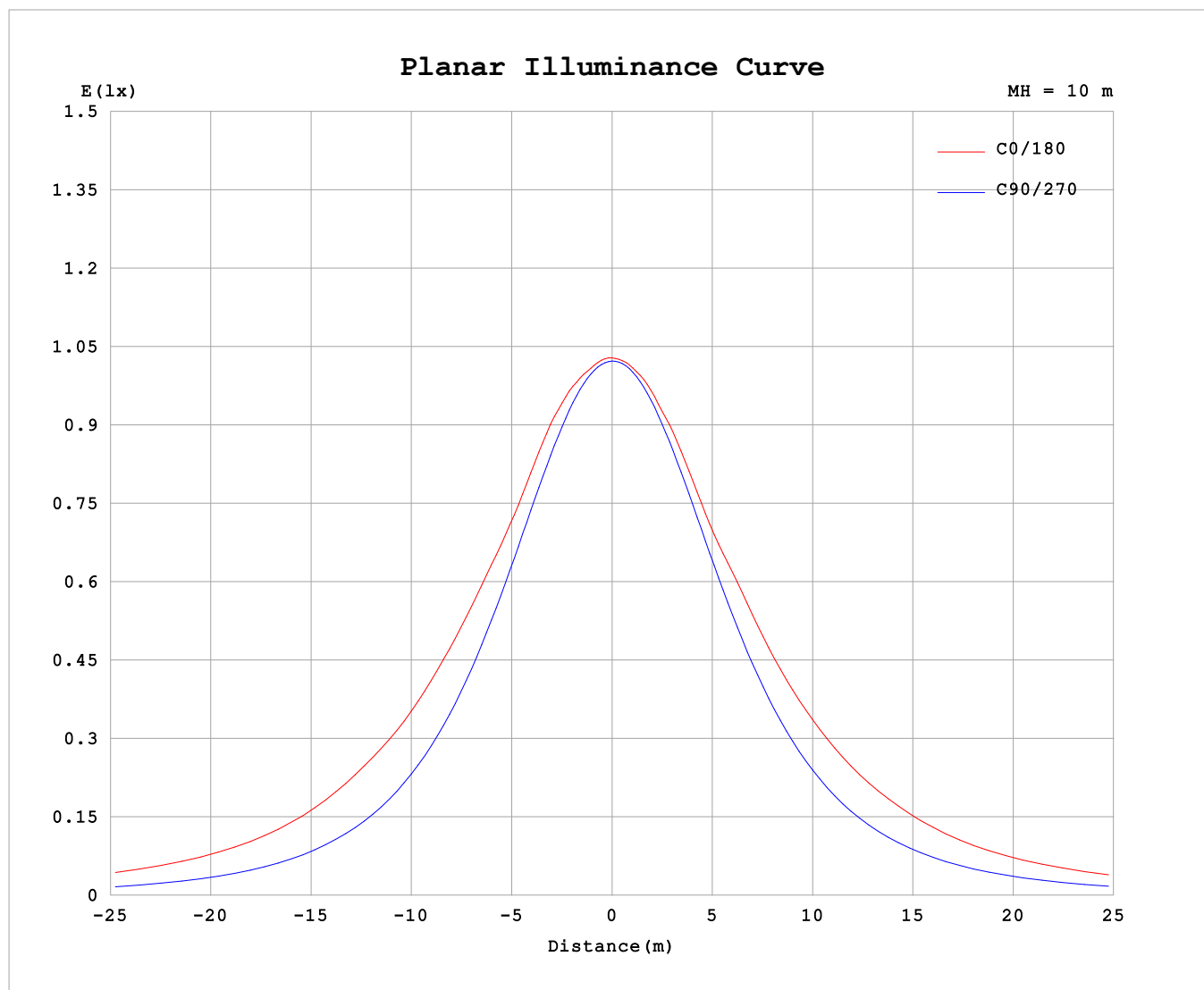
AvgL	cd/m2
L_0~180 (65) av	11849
L_0~180 (75) av	16527
L_0~180 (85) av	40281
L_90~270 (65) av	5398
L_90~270 (75) av	5346
L_90~270 (85) av	6022
L_45 (65) av	8919
L_45 (75) av	11861
L_45 (85) av	26220

Standard: GB/T 29293-2012

C Range: 0 - 360DEG
C Interval: 30.0DEG
Test Speed: HIGH
Temperature:25.3℃
Operators:
Test Date:2025-02-15

γ Range: 0 - 180DEG
γ Interval: 1.0DEG
Test System:EVERFINE GO-2000B_V1 SYSTEM V2.00.488
Humidity:65.0%
Test Distance:6.360m [K=1.0000]
Remarks:

Planar Illuminance Curve



C Range: 0 - 360DEG
C Interval: 30.0DEG
Test Speed: HIGH
Temperature: 25.3 °C
Operators:
Test Date: 2025-02-15

γ Range: 0 - 180DEG
 γ Interval: 1.0DEG
Test System: EVERFINE GO-2000B_V1 SYSTEM V2.00.488
Humidity: 65.0%
Test Distance: 6.360m [K=1.0000]
Remarks:

LUMINOUS DISTRIBUTION INTENSITY DATA

Test:U:24.00V I:0.4119A P:9.886W PF:1.000 Freq:0Hz Lamp Flux:565.339x1 lm																	
NAME: SF18-24V-3528-144-2200K-80									TYPE:						WEIGHT:		
SPEC.:									DIM.: Length=1m						SERIAL No.:		
MFR.: OLYMPIA lighting									SUR.:						Shielding Angle:		

Table--1

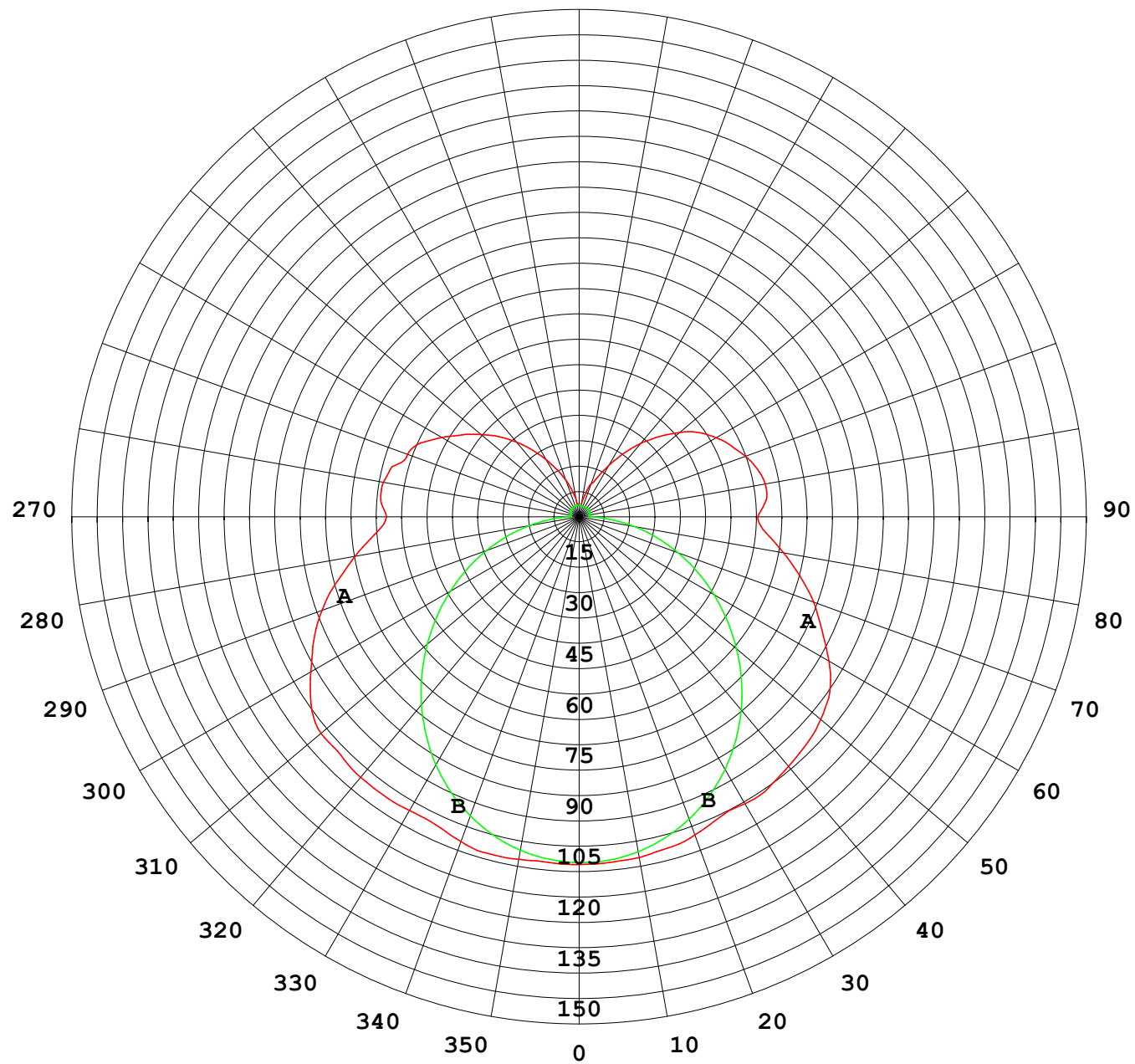
UNIT: cd

C (DEG) γ (DEG)	0	30	60	90	120	150	180	210	240	270	300	330						
0	102	102	102	102	102	102	102	102	102	102	102	102						
5	102	102	102	102	102	102	102	102	102	102	102	102						
10	102	102	101	100	101	102	102	102	101	101	101	102						
15	103	102	98.9	97.8	98.5	100	101	100	99.3	98.5	99.4	102						
20	102	101	96.7	94.3	95.7	98.8	99.8	99.2	96.7	95.3	97.4	101						
25	100	98.4	94.2	90.0	92.1	96.3	97.8	96.8	93.6	91.3	95.0	98.8						
30	99.9	96.0	90.6	84.9	88.3	93.4	97.6	94.1	90.0	86.5	91.7	96.4						
35	100	94.9	85.7	79.1	83.6	91.8	97.5	92.9	85.6	80.9	87.1	95.2						
40	100	93.3	80.2	72.7	78.3	89.5	96.0	90.8	80.6	74.7	81.6	93.5						
45	99.3	91.5	74.5	65.9	72.2	86.5	94.7	88.0	74.8	68.0	75.9	91.7						
50	99.3	88.7	68.6	58.7	66.0	83.3	92.9	85.2	68.8	60.9	69.9	88.8						
55	96.4	86.3	62.0	51.5	59.1	79.8	90.2	81.9	62.0	53.5	63.2	86.0						
60	91.3	82.6	56.1	44.0	52.8	75.2	85.0	77.1	55.9	46.2	56.9	82.5						
65	86.3	77.1	50.7	36.6	47.1	70.2	79.0	72.0	50.3	38.7	51.3	77.1						
70	80.6	71.3	45.3	29.2	41.5	64.5	73.6	66.3	44.6	31.2	45.6	71.1						
75	73.9	65.3	40.1	21.9	35.8	57.7	67.3	59.2	38.7	23.7	39.9	65.1						
80	67.0	58.1	34.5	14.9	29.5	51.0	61.1	52.4	32.3	16.4	34.1	57.8						
85	60.5	51.1	28.2	8.01	23.0	45.2	55.4	46.4	25.4	9.31	27.9	50.5						
90	56.8	45.8	23.0	2.56	18.9	41.8	52.6	42.4	20.5	3.18	21.9	44.8						
95	58.7	47.0	22.8	2.56	19.4	43.6	55.3	44.1	21.0	3.04	21.4	45.8						
100	58.6	48.8	19.1	2.58	19.3	45.6	55.7	46.2	20.8	3.12	18.3	47.5						
105	57.1	46.4	17.4	2.67	18.7	46.5	54.4	46.2	20.1	3.20	16.3	45.4						
110	53.8	44.4	17.2	2.78	19.0	45.4	52.2	44.1	20.7	3.31	16.8	41.5						
115	51.5	40.7	18.0	2.88	19.8	43.0	49.5	41.9	21.5	3.38	17.1	39.5						
120	46.8	36.5	16.5	2.97	18.3	39.5	46.7	39.1	20.1	3.40	16.0	35.3						
125	42.1	33.9	14.5	3.02	16.5	35.0	43.3	35.7	18.4	3.49	13.9	29.5						
130	37.8	30.8	12.6	3.09	14.2	31.2	38.7	32.1	16.1	3.52	12.3	26.6						
135	33.4	24.8	10.4	3.20	12.1	27.0	33.6	28.1	13.9	3.52	10.1	23.9						
140	28.7	20.5	8.13	3.29	10.3	23.0	28.2	24.2	11.9	3.43	8.36	19.4						
145	24.0	15.7	6.16	3.29	8.87	18.5	22.7	19.6	10.1	3.35	7.00	15.2						
150	19.4	12.2	5.14	3.27	7.21	15.1	17.6	15.6	8.33	3.35	5.77	11.7						
155	15.2	9.21	4.52	3.29	5.75	12.3	12.9	12.4	6.42	3.33	4.86	8.94						
160	11.5	6.42	4.41	3.37	4.59	9.41	10.3	9.50	4.98	3.33	4.55	6.55						
165	7.89	4.40	4.18	3.41	3.86	6.22	6.62	6.21	3.96	3.35	4.12	4.97						
170	4.53	4.06	3.93	3.48	3.70	4.34	3.79	4.31	3.70	3.40	3.92	4.33						
175	3.57	3.90	3.90	3.53	3.54	3.74	3.41	3.70	3.51	3.47	3.89	3.96						
180	3.43	3.60	3.59	3.55	3.61	3.66	3.41	3.60	3.58	3.53	3.61	3.69						

C Range: 0 - 360DEG
C Interval: 30.0DEG
Test Speed: HIGH
Temperature:25.3℃
Operators:
Test Date:2025-02-15

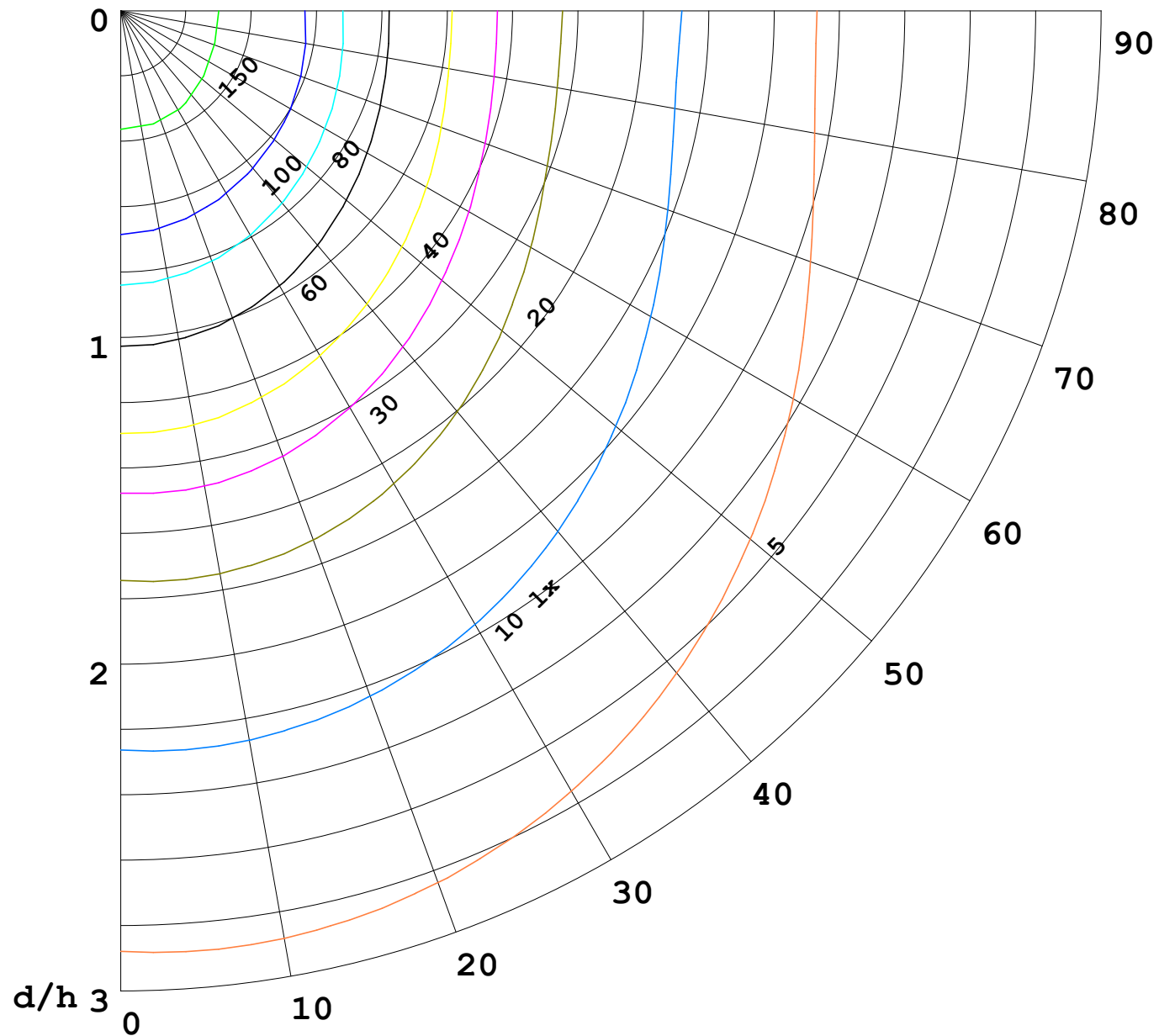
γ Range: 0 - 180DEG
γ Interval: 1.0DEG
Test System:EVERFINE GO-2000B_V1 SYSTEM V2.00.488
Humidity:65.0%
Test Distance:6.360m [K=1.0000]
Remarks:

I (cd)



1000 lm

$\kappa = 1$



F = 1000 lm
 K = 0.7
 Hcc = 0.8 m
 Hfc = 0.0 m
 Eave = 100 lx

	Pcc	Pw	Pfc
—————	70	50	30
—————	50	30	20

