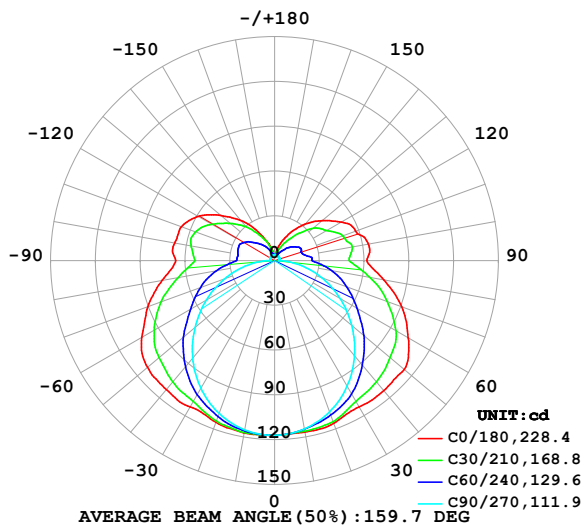


## LUMINAIRE PHOTOMETRIC TEST REPORT

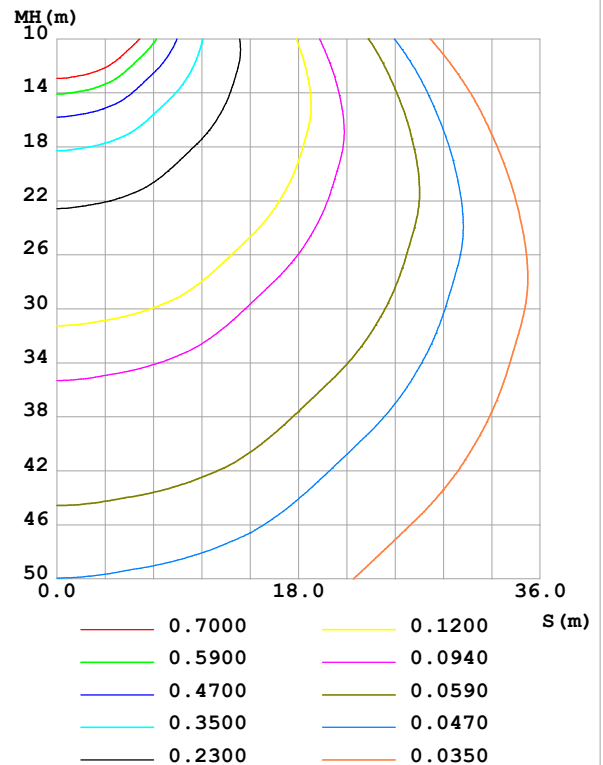
|  |                 |                  |
|--|-----------------|------------------|
| Test:U:24.00V I:0.4128A P:9.907W PF:1.000 Freq:0Hz<br>Lamp Flux:656.123x1 lm |                 |                  |
| NAME: SF18-24V-3528-144-5700K-80   | TYPE:           | WEIGHT:          |
| SPEC.:   | DIM.: Length=1m | SERIAL No.:      |
| MFR.: OLympia lighting   | SUR.:           | Shielding Angle: |

| DATA OF LAMP     |         | PHOTOMETRIC DATA      |         |                   |           | Eff: 66.23 lm/W |
|------------------|---------|-----------------------|---------|-------------------|-----------|-----------------|
| MODEL            | 3528    | I <sub>max</sub> (cd) | 117.4   | S/MH(C0/180)      | 1.49      |                 |
| NOMINAL POWER(W) | 10      | LOR(%)                | 100.0   | S/MH(C90/270)     | 1.26      |                 |
| RATED VOLTAGE(V) | 24      | TOTAL FLUX(lm)        | 656.12  | η UP,DN(C0-180)   | 12.9,36.7 |                 |
| NOMINAL FLUX(lm) | 656.123 | CIE CLASS             | SEMI-D. | η UP,DN(C180-360) | 13.2,37.2 |                 |
| LAMPS INSIDE     | 1       | η up (%)              | 26.2    | CIBSE SHR NOM     | 1.50      |                 |
| TEST VOLTAGE(V)  |         | η down (%)            | 73.8    | CIBSE SHR MAX     | 1.55      |                 |

LUMINOUS INTENSITY DISTRIBUTION DIAGRAM



C0 PLANE ISOLUX DIAGRAM (UNIT:lx)



C Range: 0 - 360DEG  
C Interval: 30.0DEG  
Test Speed: HIGH  
Temperature:25.3℃  
Operators:  
Test Date:2025-02-15

γ Range: 0 - 180DEG  
γ Interval: 1.0DEG  
Test System:EVERFINE GO-2000B\_V1 SYSTEM V2.00.488  
Humidity:65.0%  
Test Distance:6.360m [K=1.0000]  
Remarks:

## ZONAL FLUX DIAGRAM

## ZONAL FLUX DIAGRAM:

| $\gamma$ | C0                    | C45   | C90   | C135  | C180  | C225  | C270  | C315  | $\gamma$ | $\Phi$ zone | $\Phi$ total | %lum, lamp |
|----------|-----------------------|-------|-------|-------|-------|-------|-------|-------|----------|-------------|--------------|------------|
| 10       | 116.6                 | 115.4 | 114.6 | 116.0 | 117.3 | 116.4 | 115.1 | 115.7 | 0- 10    | 11.11       | 11.11        | 1.69,1.69  |
| 20       | 116.0                 | 112.5 | 107.8 | 112.0 | 115.3 | 112.8 | 109.0 | 113.0 | 10- 20   | 32.36       | 43.48        | 6.63,6.63  |
| 30       | 113.3                 | 106.1 | 97.23 | 104.9 | 113.3 | 106.3 | 98.89 | 106.8 | 20- 30   | 50.43       | 93.91        | 14.3,14.3  |
| 40       | 113.8                 | 98.74 | 83.32 | 97.52 | 112.9 | 99.55 | 85.44 | 99.43 | 30- 40   | 64.36       | 158.3        | 24.1,24.1  |
| 50       | 113.4                 | 89.55 | 67.43 | 87.70 | 111.2 | 90.43 | 69.60 | 90.08 | 40- 50   | 73.01       | 231.3        | 35.2,35.2  |
| 60       | 103.4                 | 78.81 | 50.61 | 76.36 | 102.7 | 79.13 | 52.75 | 78.99 | 50- 60   | 75.39       | 306.7        | 46.7,46.7  |
| 70       | 90.64                 | 65.88 | 33.59 | 64.08 | 90.50 | 66.95 | 35.52 | 65.55 | 60- 70   | 70.73       | 377.4        | 57.5,57.5  |
| 80       | 74.23                 | 51.79 | 17.17 | 50.08 | 76.46 | 52.65 | 18.54 | 51.13 | 70- 80   | 60.62       | 438.0        | 66.8,66.8  |
| 90       | 61.82                 | 37.62 | 3.048 | 38.55 | 66.24 | 39.59 | 3.283 | 36.37 | 80- 90   | 46.37       | 484.4        | 73.8,73.8  |
| 100      | 63.95                 | 36.99 | 3.053 | 41.34 | 68.10 | 40.95 | 3.276 | 35.71 | 90-100   | 40.53       | 524.9        | 80,80      |
| 110      | 57.88                 | 33.83 | 3.221 | 40.14 | 66.53 | 41.11 | 3.544 | 31.54 | 100-110  | 38.59       | 563.5        | 85.9,85.9  |
| 120      | 51.82                 | 29.35 | 3.386 | 35.10 | 59.21 | 36.54 | 3.669 | 28.21 | 110-120  | 33.60       | 597.1        | 91,91      |
| 130      | 41.78                 | 24.14 | 3.464 | 27.73 | 47.10 | 29.03 | 3.827 | 23.18 | 120-130  | 25.53       | 622.6        | 94.9,94.9  |
| 140      | 31.95                 | 16.31 | 3.715 | 20.76 | 35.14 | 21.91 | 3.744 | 14.68 | 130-140  | 17.05       | 639.7        | 97.5,97.5  |
| 150      | 21.83                 | 9.933 | 3.770 | 13.69 | 22.39 | 14.66 | 3.703 | 9.576 | 140-150  | 9.651       | 649.3        | 99,99      |
| 160      | 12.85                 | 6.345 | 3.877 | 8.442 | 12.33 | 8.699 | 3.758 | 6.305 | 150-160  | 4.623       | 654.0        | 99.7,99.7  |
| 170      | 5.402                 | 4.574 | 4.001 | 4.747 | 4.581 | 4.651 | 3.917 | 4.740 | 160-170  | 1.744       | 655.7        | 99.9,99.9  |
| 180      | 4.016                 | 4.119 | 4.087 | 4.229 | 3.993 | 4.113 | 4.073 | 4.231 | 170-180  | 0.4138      | 656.1        | 100,100    |
| DEG      | LUMINOUS INTENSITY:cd |       |       |       |       |       |       |       |          | UNIT:lm     |              |            |

Conical surface Flux(90deg): 194.05 lm

%lum = 29.6%

%lamp = 29.6%

Conical surface Flux(130deg): 342.98 lm

%lum = 52.3%

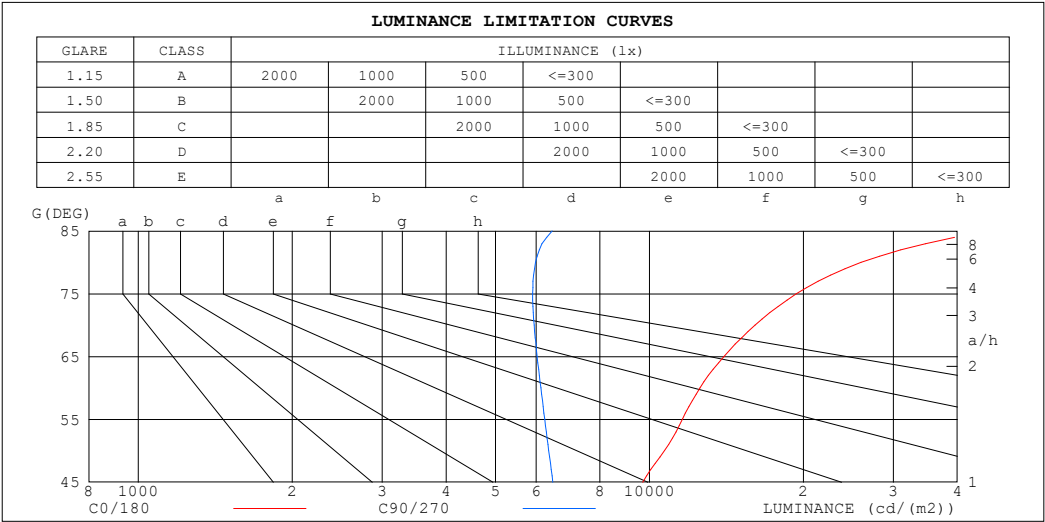
%lamp = 52.3%

C Range: 0 - 360DEG  
 C Interval: 30.0DEG  
 Test Speed: HIGH  
 Temperature:25.3℃  
 Operators:  
 Test Date:2025-02-15

$\gamma$  Range: 0 - 180DEG  
 $\gamma$  Interval: 1.0DEG  
 Test System:EVERFINE GO-2000B\_V1 SYSTEM V2.00.488  
 Humidity:65.0%  
 Test Distance:6.360m [K=1.0000]  
 Remarks:

LUMINANCE LIMITATION CURVES

|  |                 |                  |
|--|-----------------|------------------|
| Test:U:24.00V I:0.4128A P:9.907W PF:1.000 Freq:0Hz<br>Lamp Flux:656.123x1 lm |                 |                  |
| NAME: SF18-24V-3528-144-5700K-80   | TYPE:           | WEIGHT:          |
| SPEC.:   | DIM.: Length=1m | SERIAL No.:      |
| MFR.: OLympia lighting   | SUR.:           | Shielding Angle: |



| LUMINANCE cd/(m2) |        |         |
|-------------------|--------|---------|
| G (DEG)           | C0/180 | C90/270 |
| 85                | 46344  | 6450    |
| 80                | 25940  | 5986    |
| 75                | 19383  | 5907    |
| 70                | 16080  | 5947    |
| 65                | 13989  | 6029    |
| 60                | 12548  | 6129    |
| 55                | 11593  | 6238    |
| 50                | 10701  | 6353    |
| 45                | 9698   | 6469    |

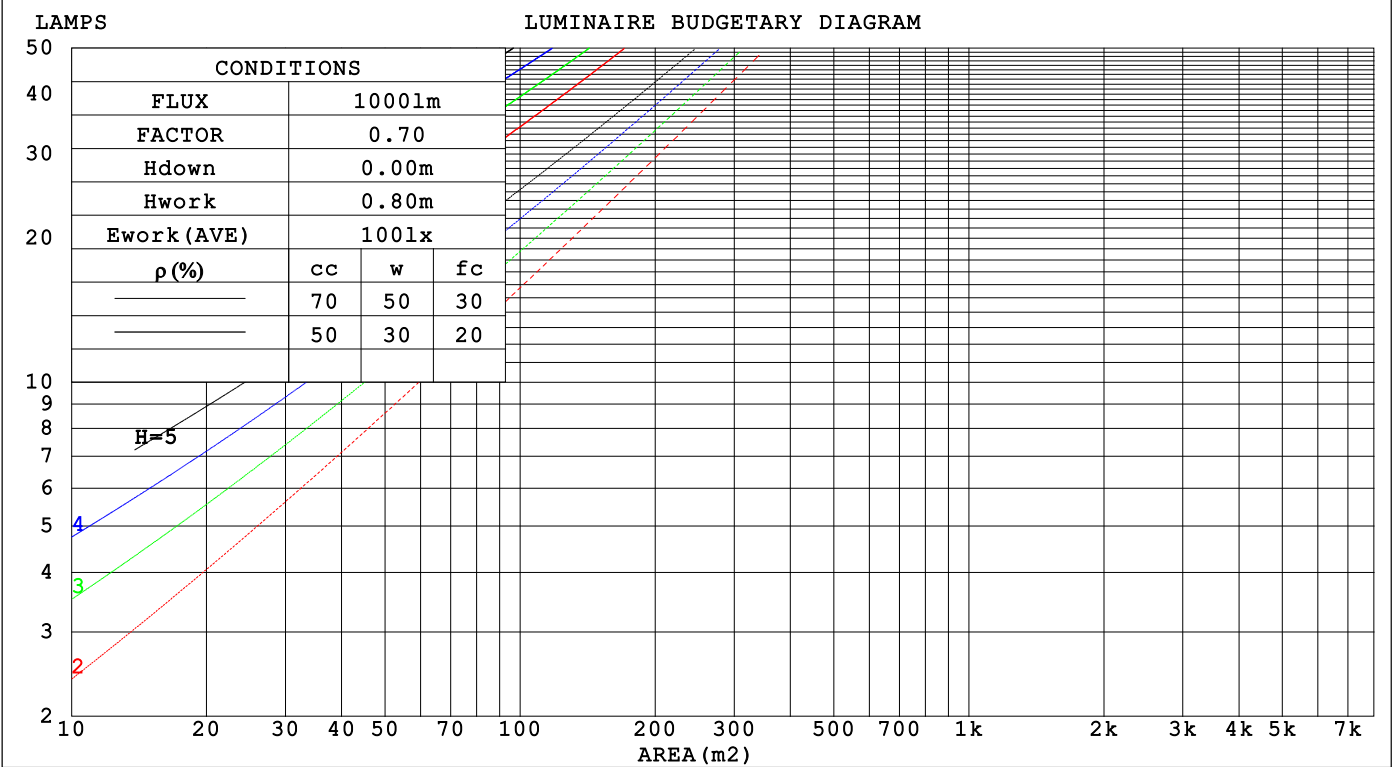
C Range: 0 - 360DEG  
C Interval: 30.0DEG  
Test Speed: HIGH  
Temperature:25.3℃  
Operators:  
Test Date:2025-02-15

γ Range: 0 - 180DEG  
γ Interval: 1.0DEG  
Test System:EVERFINE GO-2000B\_V1 SYSTEM V2.00.488  
Humidity:65.0%  
Test Distance:6.360m [K=1.0000]  
Remarks:

CU AND LUMINAIRE BUDGETARY ESTIMATE DIAGRAM

|  |                 |                  |
|--|-----------------|------------------|
| Test:U:24.00V I:0.4128A P:9.907W PF:1.000 Freq:0Hz |                 |                  |
| Lamp Flux:656.123x1 lm                             |                 |                  |
| NAME: SF18-24V-3528-144-5700K-80                   | TYPE:           | WEIGHT:          |
| SPEC.:   | DIM.: Length=1m | SERIAL No.:      |
| MFR.: OLYmpia lighting                             | SUR.:           | Shielding Angle: |

|                 |                       |     |     |     |     |     |     |     |     |     |     |     |     |     |     |   |
|-----------------|-----------------------|-----|-----|-----|-----|-----|-----|-----|-----|-----|-----|-----|-----|-----|-----|---|
| pcc             | 80%                   |     |     | 70% |     |     | 50% |     |     | 30% |     |     | 10% |     |     | 0 |
| p <sub>w</sub>  | 50%                   | 30% | 10% | 50% | 30% | 10% | 50% | 30% | 10% | 50% | 30% | 10% | 50% | 30% | 10% | 0 |
| p <sub>fc</sub> | 20%                   |     |     | 20% |     |     | 20% |     |     | 20% |     |     | 20% |     |     | 0 |
| RCR             | RCR:Room Cavity Ratio |     |     |     |     |     |     |     |     |     |     |     |     |     |     |   |



C Range: 0 - 360DEG  
C Interval: 30.0DEG  
Test Speed: HIGH  
Temperature:25.3℃  
Operators:  
Test Date:2025-02-15

γ Range: 0 - 180DEG  
γ Interval: 1.0DEG  
Test System:EVERFINE GO-2000B\_V1 SYSTEM V2.00.488  
Humidity:65.0%  
Test Distance:6.360m [K=1.0000]  
Remarks:

## WEC AND CCEC

|  |                 |                  |
|--|-----------------|------------------|
| Test:U:24.00V I:0.4128A P:9.907W PF:1.000 Freq:0Hz<br>Lamp Flux:656.123x1 lm |                 |                  |
| NAME: SF18-24V-3528-144-5700K-80   | TYPE:           | WEIGHT:          |
| SPEC.:   | DIM.: Length=1m | SERIAL No.:      |
| MFR.: OLympia lighting   | SUR.:           | Shielding Angle: |

| pcc  | 80%                   |      |      | 70%  |      |      | 50%  |      |      | 30%  |      |      | 10%  |      |      | 0                               |  |  |  |  |  |  |  |  |  |  |  |  |  |  |
|------|-----------------------|------|------|------|------|------|------|------|------|------|------|------|------|------|------|---------------------------------|--|--|--|--|--|--|--|--|--|--|--|--|--|--|
| pw   | 50%                   | 30%  | 10%  | 50%  | 30%  | 10%  | 50%  | 30%  | 10%  | 50%  | 30%  | 10%  | 50%  | 30%  | 10%  | 0                               |  |  |  |  |  |  |  |  |  |  |  |  |  |  |
| pfc  | 20%                   |      |      | 20%  |      |      | 20%  |      |      | 20%  |      |      | 20%  |      |      | 0                               |  |  |  |  |  |  |  |  |  |  |  |  |  |  |
| RCR  | RCR:Room Cavity Ratio |      |      |      |      |      |      |      |      |      |      |      |      |      |      | Wall Exitance Coefficients(WEC) |  |  |  |  |  |  |  |  |  |  |  |  |  |  |
| 0.0  |                       |      |      |      |      |      |      |      |      |      |      |      |      |      |      |                                 |  |  |  |  |  |  |  |  |  |  |  |  |  |  |
| 1.0  | .382                  | .217 | .069 | .366 | .209 | .066 | .338 | .194 | .062 | .312 | .180 | .058 | .288 | .167 | .054 |                                 |  |  |  |  |  |  |  |  |  |  |  |  |  |  |
| 2.0  | .331                  | .181 | .056 | .317 | .175 | .054 | .291 | .162 | .050 | .267 | .150 | .047 | .245 | .139 | .044 |                                 |  |  |  |  |  |  |  |  |  |  |  |  |  |  |
| 3.0  | .294                  | .156 | .047 | .281 | .151 | .045 | .258 | .140 | .042 | .236 | .129 | .040 | .216 | .120 | .037 |                                 |  |  |  |  |  |  |  |  |  |  |  |  |  |  |
| 4.0  | .264                  | .137 | .040 | .253 | .132 | .039 | .232 | .123 | .037 | .212 | .114 | .034 | .193 | .105 | .032 |                                 |  |  |  |  |  |  |  |  |  |  |  |  |  |  |
| 5.0  | .240                  | .122 | .035 | .230 | .118 | .034 | .211 | .110 | .032 | .192 | .102 | .030 | .175 | .094 | .028 |                                 |  |  |  |  |  |  |  |  |  |  |  |  |  |  |
| 6.0  | .220                  | .110 | .032 | .211 | .106 | .031 | .193 | .099 | .029 | .176 | .092 | .027 | .161 | .085 | .025 |                                 |  |  |  |  |  |  |  |  |  |  |  |  |  |  |
| 7.0  | .203                  | .100 | .028 | .194 | .097 | .028 | .178 | .090 | .026 | .163 | .083 | .024 | .148 | .077 | .023 |                                 |  |  |  |  |  |  |  |  |  |  |  |  |  |  |
| 8.0  | .188                  | .092 | .026 | .180 | .089 | .025 | .165 | .083 | .024 | .151 | .076 | .022 | .138 | .071 | .021 |                                 |  |  |  |  |  |  |  |  |  |  |  |  |  |  |
| 9.0  | .175                  | .085 | .024 | .168 | .082 | .023 | .154 | .076 | .022 | .141 | .071 | .020 | .128 | .065 | .019 |                                 |  |  |  |  |  |  |  |  |  |  |  |  |  |  |
| 10.0 | .164                  | .079 | .022 | .157 | .076 | .021 | .144 | .071 | .020 | .132 | .066 | .019 | .120 | .061 | .017 |                                 |  |  |  |  |  |  |  |  |  |  |  |  |  |  |

| pcc  | 80%                   |      |      | 70%  |      |      | 50%   |      |      | 30%  |      |      | 10%  |      |      | 0 |
|------|-----------------------|------|------|------|------|------|---|------|------|------|------|------|------|------|------|---|
| pw   | 50%                   | 30%  | 10%  | 50%  | 30%  | 10%  | 50%   | 30%  | 10%  | 50%  | 30%  | 10%  | 50%  | 30%  | 10%  | 0 |
| pfc  | 20%                   |      |      | 20%  |      |      | 20%   |      |      | 20%  |      |      | 20%  |      |      | 0 |
| RCR  | RCR:Room Cavity Ratio |      |      |      |      |      | Ceiling Cavity Exitance Coefficients (CCEC) |      |      |      |      |      |      |      |      |   |
| 0.0  | .390                  | .390 | .390 | .333 | .333 | .333 | .227  | .227 | .227 | .131 | .131 | .131 | .042 | .042 | .042 |   |
| 1.0  | .386                  | .357 | .330 | .331 | .306 | .284 | .226  | .211 | .196 | .130 | .122 | .114 | .042 | .039 | .037 |   |
| 2.0  | .380                  | .334 | .296 | .325 | .288 | .256 | .223  | .199 | .178 | .129 | .116 | .105 | .041 | .037 | .034 |   |
| 3.0  | .373                  | .318 | .274 | .319 | .274 | .238 | .219  | .191 | .167 | .127 | .111 | .098 | .041 | .036 | .032 |   |
| 4.0  | .365                  | .306 | .260 | .313 | .264 | .226 | .215  | .184 | .159 | .125 | .108 | .094 | .040 | .035 | .031 |   |
| 5.0  | .357                  | .296 | .251 | .307 | .256 | .218 | .211  | .179 | .154 | .123 | .105 | .091 | .039 | .034 | .030 |   |
| 6.0  | .350                  | .288 | .244 | .301 | .250 | .212 | .208  | .175 | .150 | .120 | .103 | .089 | .039 | .034 | .030 |   |
| 7.0  | .343                  | .282 | .239 | .295 | .244 | .208 | .204  | .171 | .147 | .119 | .101 | .088 | .038 | .033 | .029 |   |
| 8.0  | .337                  | .276 | .235 | .290 | .240 | .205 | .201  | .168 | .145 | .117 | .099 | .087 | .038 | .033 | .029 |   |
| 9.0  | .330                  | .272 | .232 | .285 | .236 | .202 | .197  | .166 | .144 | .115 | .098 | .086 | .037 | .032 | .028 |   |
| 10.0 | .325                  | .268 | .230 | .280 | .232 | .200 | .194  | .164 | .142 | .113 | .097 | .085 | .037 | .032 | .028 |   |

C Range: 0 - 360DEG  
C Interval: 30.0DEG  
Test Speed: HIGH  
Temperature:25.3℃  
Operators:  
Test Date:2025-02-15

γ Range: 0 - 180DEG  
γ Interval: 1.0DEG  
Test System:EVERFINE GO-2000B\_V1 SYSTEM V2.00.488  
Humidity:65.0%  
Test Distance:6.360m [K=1.0000]  
Remarks:

UGR(Unified Glare Rating) Table

|  |     |                  |      |      |                 |      |                |                  |      |      |      |
|--|-----|------------------|------|------|-----------------|------|----------------|------------------|------|------|------|
| Test:U:24.00V I:0.4128A P:9.907W PF:1.000 Freq:0Hz<br>Lamp Flux:656.123x1 lm |     |                  |      |      |                 |      |                |                  |      |      |      |
| NAME: SF18-24V-3528-144-5700K-80   |     |                  |      |      | TYPE:           |      |                | WEIGHT:          |      |      |      |
| SPEC.:   |     |                  |      |      | DIM.: Length=1m |      |                | SERIAL No.:      |      |      |      |
| MFR.: OLympia lighting   |     |                  |      |      | SUR.:           |      |                | Shielding Angle: |      |      |      |
| ceiling/cavity   | 0.7 | 0.7              | 0.5  | 0.5  | 0.3             | 0.7  | 0.7            | 0.5              | 0.5  | 0.3  |      |
| walls  | 0.5 | 0.3              | 0.5  | 0.3  | 0.3             | 0.5  | 0.3            | 0.5              | 0.3  | 0.3  |      |
| working plane  | 0.2 | 0.2              | 0.2  | 0.2  | 0.2             | 0.2  | 0.2            | 0.2              | 0.2  | 0.2  |      |
| Room dimensions  |     | Viewed crosswise |      |      |                 |      | Viewed endwise |                  |      |      |      |
| x = 2H y = 2H  | 2H  | 21.7             | 23.0 | 22.3 | 23.6            | 24.3 | 18.7           | 19.9             | 19.3 | 20.6 | 21.3 |
|  | 3H  | 24.5             | 25.6 | 25.1 | 26.3            | 27.0 | 20.3           | 21.5             | 21.0 | 22.2 | 22.9 |
|  | 4H  | 25.9             | 27.0 | 26.6 | 27.7            | 28.5 | 21.1           | 22.2             | 21.7 | 22.9 | 23.7 |
|  | 6H  | 27.5             | 28.5 | 28.2 | 29.2            | 30.0 | 21.7           | 22.8             | 22.4 | 23.5 | 24.3 |
|  | 8H  | 28.3             | 29.3 | 29.0 | 30.0            | 30.9 | 22.0           | 23.0             | 22.7 | 23.7 | 24.5 |
|  | 12H | 29.3             | 30.3 | 30.0 | 31.0            | 31.8 | 22.2           | 23.1             | 22.9 | 23.9 | 24.7 |
| 4H   | 2H  | 22.2             | 23.3 | 22.8 | 24.0            | 24.8 | 20.0           | 21.1             | 20.7 | 21.8 | 22.6 |
|  | 3H  | 25.2             | 26.2 | 25.9 | 26.9            | 27.7 | 21.9           | 22.9             | 22.6 | 23.6 | 24.4 |
|  | 4H  | 26.9             | 27.8 | 27.6 | 28.5            | 29.3 | 22.8           | 23.7             | 23.5 | 24.4 | 25.3 |
|  | 6H  | 28.6             | 29.4 | 29.4 | 30.2            | 31.1 | 23.7           | 24.5             | 24.4 | 25.2 | 26.1 |
|  | 8H  | 29.6             | 30.4 | 30.4 | 31.1            | 32.0 | 24.0           | 24.7             | 24.7 | 25.5 | 26.4 |
|  | 12H | 30.7             | 31.4 | 31.5 | 32.2            | 33.1 | 24.3           | 25.0             | 25.0 | 25.7 | 26.7 |
| 8H   | 4H  | 27.2             | 27.9 | 27.9 | 28.7            | 29.6 | 24.0           | 24.7             | 24.8 | 25.5 | 26.4 |
|  | 6H  | 29.2             | 29.9 | 30.0 | 30.7            | 31.6 | 25.2           | 25.8             | 25.9 | 26.6 | 27.5 |
|  | 8H  | 30.4             | 31.0 | 31.2 | 31.8            | 32.8 | 25.7           | 26.3             | 26.5 | 27.1 | 28.0 |
|  | 12H | 31.8             | 32.3 | 32.6 | 33.1            | 34.1 | 26.2           | 26.7             | 27.0 | 27.5 | 28.5 |
| 12H  | 4H  | 27.2             | 27.9 | 27.9 | 28.6            | 29.6 | 24.4           | 25.1             | 25.1 | 25.8 | 26.8 |
|  | 6H  | 29.3             | 29.9 | 30.1 | 30.7            | 31.7 | 25.7           | 26.3             | 26.5 | 27.1 | 28.1 |
|  | 8H  | 30.6             | 31.1 | 31.4 | 31.9            | 32.9 | 26.4           | 26.9             | 27.3 | 27.8 | 28.7 |
| Variations with the observer position at spacings(CIE Pub.117):              |     |                  |      |      |                 |      |                |                  |      |      |      |
| S = 1.0H   |     | + 0.1 / - 0.1    |      |      |                 |      | + 0.1 / - 0.1  |                  |      |      |      |
| 1.5H   |     | + 0.2 / - 0.2    |      |      |                 |      | + 0.2 / - 0.3  |                  |      |      |      |
| 2.0H   |     | + 0.2 / - 0.3    |      |      |                 |      | + 0.2 / - 0.4  |                  |      |      |      |

CIE Pub.117, 656.1 lm Total Lamp Luminous Flux Correct (8log(F/F0) = -1.5)  
Area: 0.0165 m2

C Range: 0 - 360DEG  
C Interval: 30.0DEG  
Test Speed: HIGH  
Temperature:25.3℃  
Operators:  
Test Date:2025-02-15

γ Range: 0 - 180DEG  
γ Interval: 1.0DEG  
Test System:EVERFINE GO-2000B\_V1 SYSTEM V2.00.488  
Humidity:65.0%  
Test Distance:6.360m [K=1.0000]  
Remarks:

## UTILIZATION FACTORS TABLE

|  |                 |                  |
|--|-----------------|------------------|
| Test:U:24.00V I:0.4128A P:9.907W PF:1.000 Freq:0Hz<br>Lamp Flux:656.123x1 lm |                 |                  |
| NAME: SF18-24V-3528-144-5700K-80   | TYPE:           | WEIGHT:          |
| SPEC.:   | DIM.: Length=1m | SERIAL No.:      |
| MFR.: OLympia lighting   | SUR.:           | Shielding Angle: |

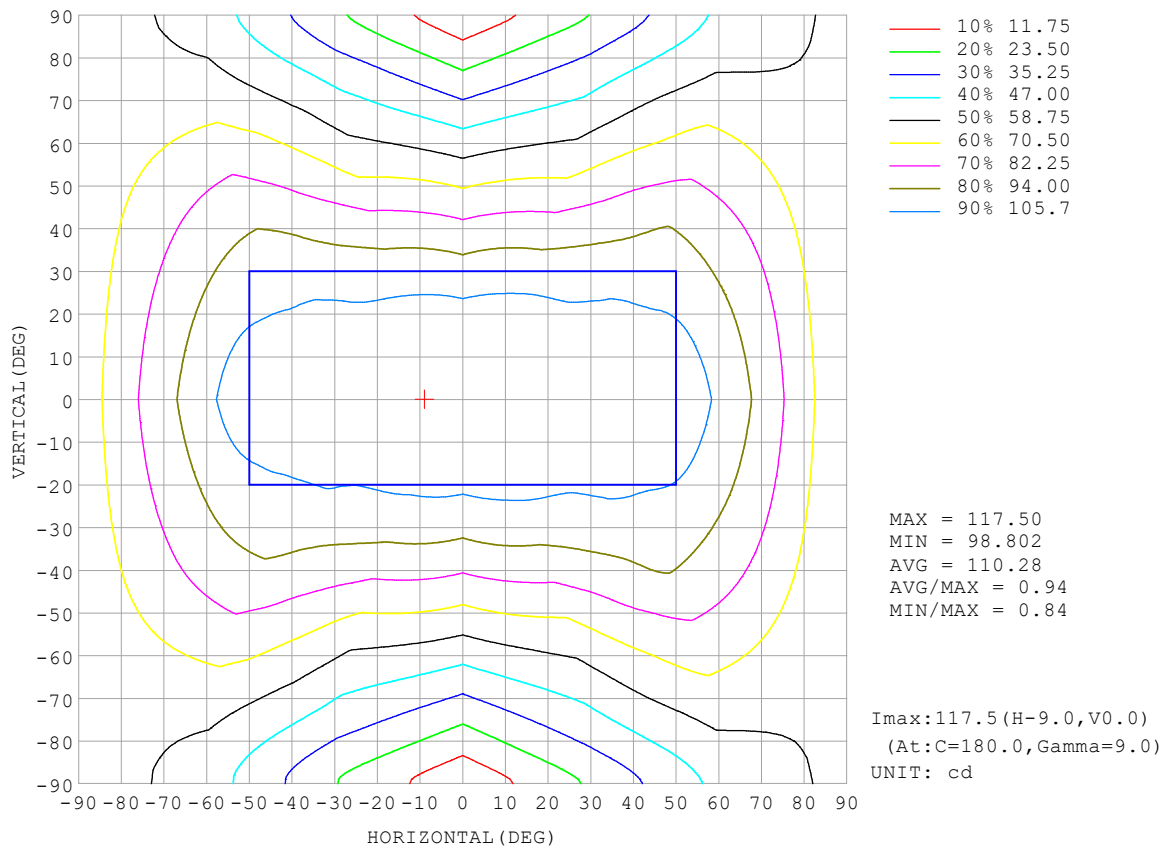
| REFLECTANCE                      |  |     |           |     |     |     |     |               |     |        |
|----------------------------------|--|-----|-----------|-----|-----|-----|-----|---------------|-----|--------|
| Ceiling                          | 0.8  | 0.8 | 0.8       | 0.7 | 0.7 | 0.7 | 0.5 | 0.5           | 0.5 | 0      |
| Walls                            | 0.7  | 0.5 | 0.3       | 0.7 | 0.5 | 0.3 | 0.7 | 0.5           | 0.3 | 0      |
| Working plane                    | 0.2  | 0.2 | 0.2       | 0.2 | 0.2 | 0.2 | 0.2 | 0.2           | 0.2 | 0      |
| ROOM INDEX                       | UTILIZATION FACTORS (PERCENT) $k(RI) \times RCR = 5$ |     |           |     |     |     |     |               |     |        |
| $k = 0.60$                       | 45   | 32  | 25        | 43  | 32  | 25  | 41  | 31            | 24  | 17     |
| 0.80                             | 54   | 41  | 33        | 52  | 40  | 32  | 49  | 38            | 31  | 23     |
| 1.00                             | 62   | 48  | 40        | 59  | 47  | 39  | 55  | 47            | 38  | 28     |
| 1.25                             | 69   | 56  | 47        | 66  | 54  | 46  | 61  | 51            | 44  | 33     |
| 1.50                             | 74   | 61  | 52        | 71  | 59  | 51  | 65  | 55            | 48  | 37     |
| 2.00                             | 81   | 70  | 61        | 78  | 67  | 59  | 71  | 62            | 56  | 43     |
| 2.50                             | 86   | 75  | 67        | 82  | 72  | 65  | 74  | 67            | 61  | 46     |
| 3.00                             | 90   | 80  | 72        | 85  | 77  | 70  | 77  | 71            | 65  | 49     |
| 4.00                             | 95   | 86  | 80        | 90  | 83  | 77  | 81  | 76            | 71  | 54     |
| 5.00                             | 98   | 91  | 84        | 93  | 86  | 81  | 84  | 79            | 74  | 57     |
| ROOM INDEX                       | UF (total)   |     |           |     |     |     |     |               |     | Direct |
| According to DIN EN 13032-2 2004 |  |     | Suspended |     |     |     |     | SHRNOM = 1.25 |     |        |

C Range: 0 - 360DEG  
 C Interval: 30.0DEG  
 Test Speed: HIGH  
 Temperature: 25.3°C  
 Operators:  
 Test Date: 2025-02-15

γ Range: 0 - 180DEG  
 γ Interval: 1.0DEG  
 Test System: EVERFINE GO-2000B\_V1 SYSTEM V2.00.488  
 Humidity: 65.0%  
 Test Distance: 6.360m [K=1.0000]  
 Remarks:

## ISOCANDELA DIAGRAM

|  |                 |                  |
|--|-----------------|------------------|
| Test:U:24.00V I:0.4128A P:9.907W PF:1.000 Freq:0Hz<br>Lamp Flux:656.123x1 lm |                 |                  |
| NAME: SF18-24V-3528-144-5700K-80   | TYPE:           | WEIGHT:          |
| SPEC.:   | DIM.: Length=1m | SERIAL No.:      |
| MFR.: OLympia lighting   | SUR.:           | Shielding Angle: |



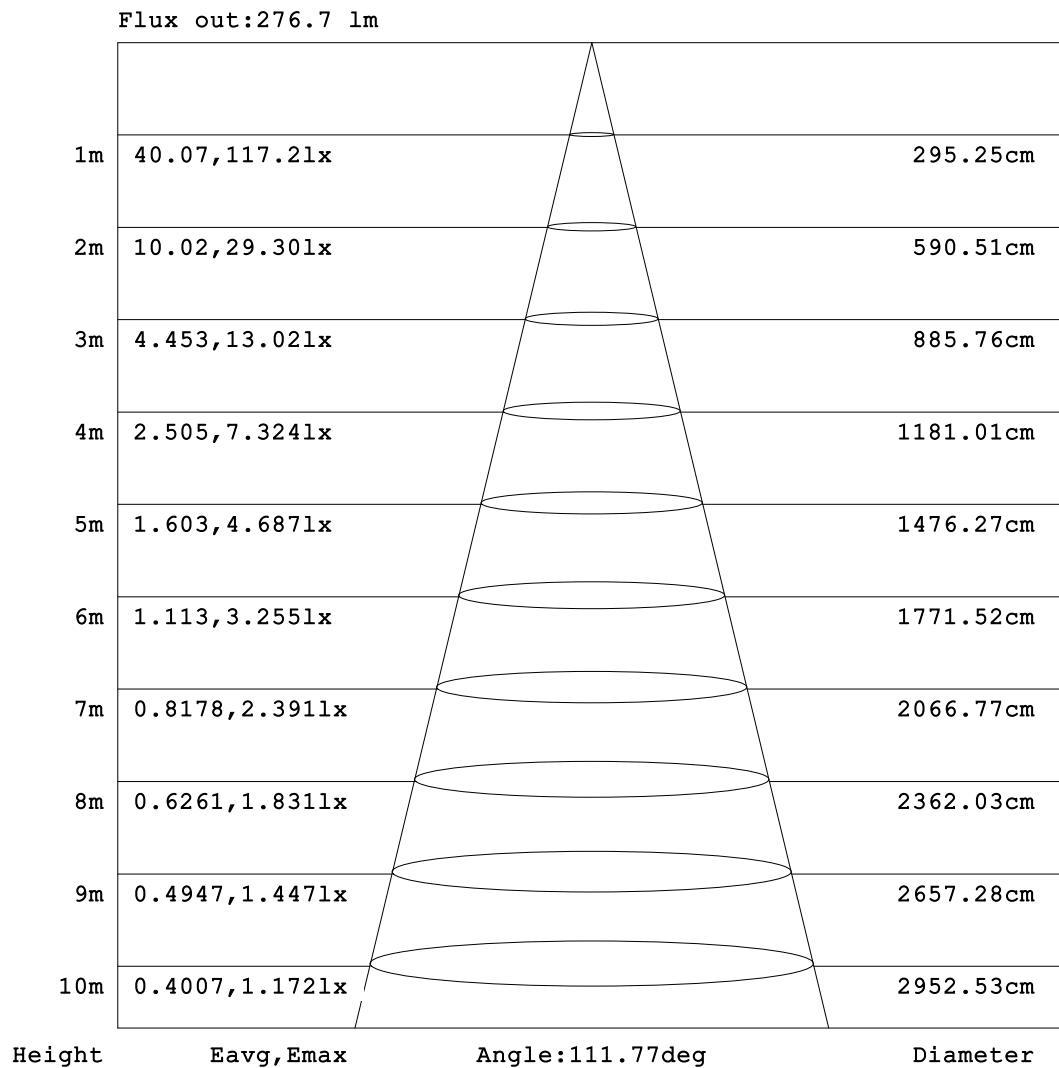
C Range: 0 - 360DEG  
C Interval: 30.0DEG  
Test Speed: HIGH  
Temperature:25.3℃  
Operators:  
Test Date:2025-02-15

γ Range: 0 - 180DEG  
γ Interval: 1.0DEG  
Test System:EVERFINE GO-2000B\_V1 SYSTEM V2.00.488  
Humidity:65.0%  
Test Distance:6.360m [K=1.0000]  
Remarks:



## AAI Figure

|  |                 |                  |
|--|-----------------|------------------|
| Test:U:24.00V I:0.4128A P:9.907W PF:1.000 Freq:0Hz<br>Lamp Flux:656.123x1 lm |                 |                  |
| NAME: SF18-24V-3528-144-5700K-80   | TYPE:           | WEIGHT:          |
| SPEC.:   | DIM.: Length=1m | SERIAL No.:      |
| MFR.: OLympia lighting   | SUR.:           | Shielding Angle: |



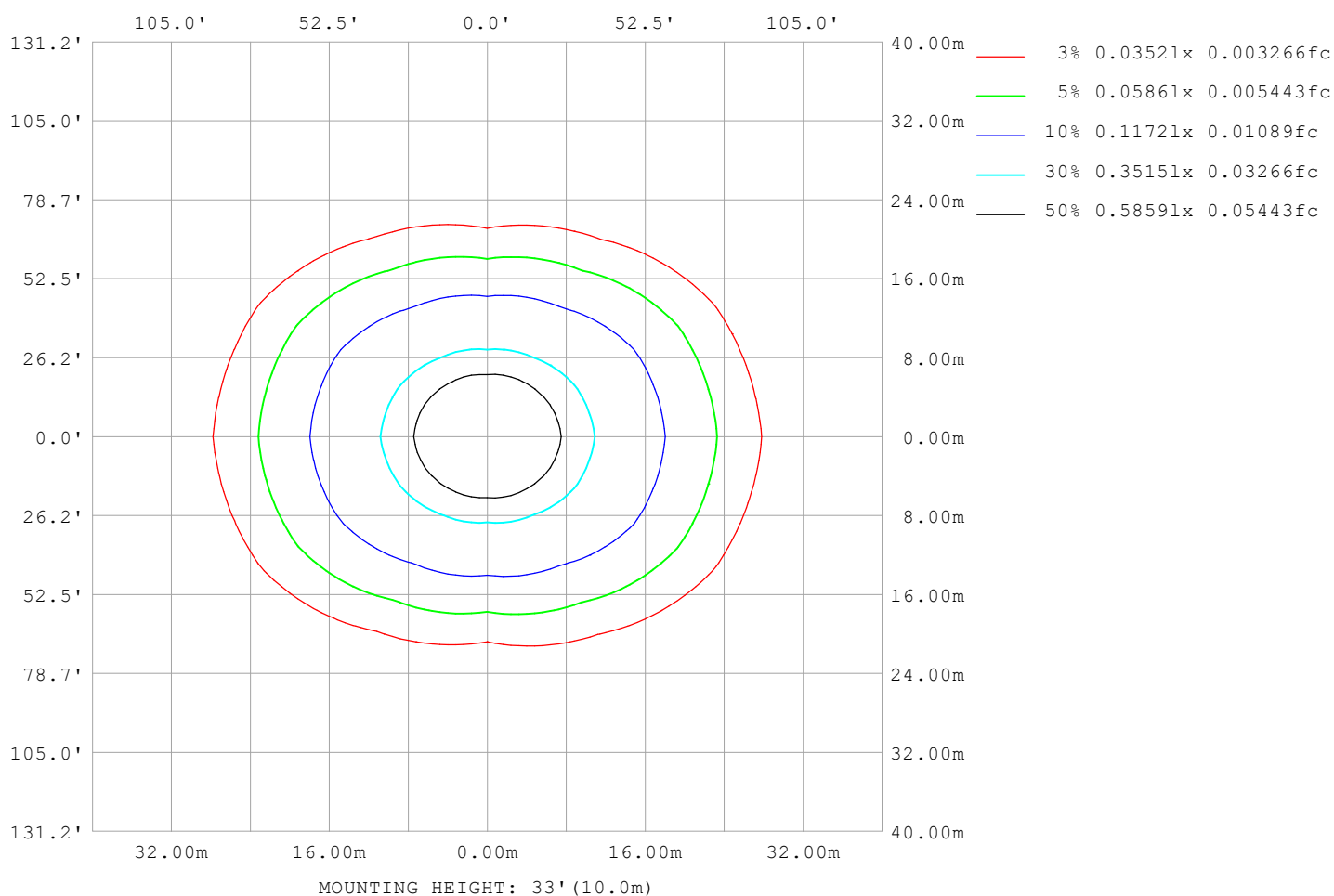
Note:The Curves indicate the illuminated area and the average illumination when the luminaire is at different distance.

C Range: 0 - 360DEG  
C Interval: 30.0DEG  
Test Speed: HIGH  
Temperature:25.3℃  
Operators:  
Test Date:2025-02-15

γ Range: 0 - 180DEG  
γ Interval: 1.0DEG  
Test System:EVERFINE GO-2000B\_V1 SYSTEM V2.00.488  
Humidity:65.0%  
Test Distance:6.360m [K=1.0000]  
Remarks:

## ISOLUX DIAGRAM

|  |                 |                  |
|--|-----------------|------------------|
| Test:U:24.00V I:0.4128A P:9.907W PF:1.000 Freq:0Hz<br>Lamp Flux:656.123x1 lm |                 |                  |
| NAME: SF18-24V-3528-144-5700K-80   | TYPE:           | WEIGHT:          |
| SPEC.:   | DIM.: Length=1m | SERIAL No.:      |
| MFR.: OLympia lighting   | SUR.:           | Shielding Angle: |



C Range: 0 - 360DEG  
C Interval: 30.0DEG  
Test Speed: HIGH  
Temperature: 25.3°C  
Operators:  
Test Date: 2025-02-15

γ Range: 0 - 180DEG  
γ Interval: 1.0DEG  
Test System: EVERFINE GO-2000B\_V1 SYSTEM V2.00.488  
Humidity: 65.0%  
Test Distance: 6.360m [K=1.0000]  
Remarks:

## LED Avg.L Report

|  |                 |                  |
|--|-----------------|------------------|
| Test:U:24.00V I:0.4128A P:9.907W PF:1.000 Freq:0Hz<br>Lamp Flux:656.123x1 lm |                 |                  |
| NAME: SF18-24V-3528-144-5700K-80   | TYPE:           | WEIGHT:          |
| SPEC.:   | DIM.: Length=1m | SERIAL No.:      |
| MFR.: OLympia lighting   | SUR.:           | Shielding Angle: |

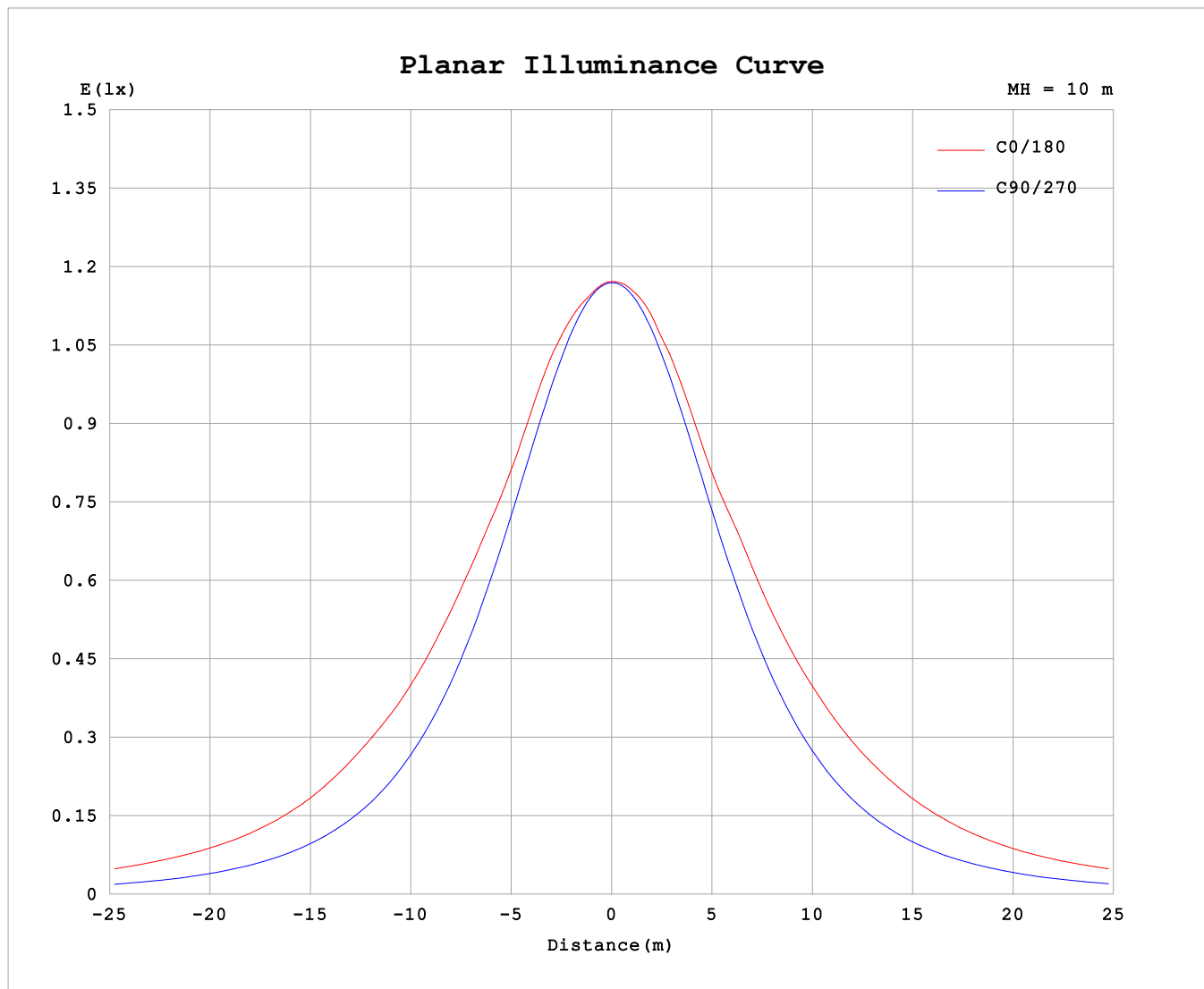
| AvgL             | cd/m2 |
|------------------|-------|
| L_0~180 (65) av  | 13874 |
| L_0~180 (75) av  | 19460 |
| L_0~180 (85) av  | 47414 |
| L_90~270 (65) av | 6185  |
| L_90~270 (75) av | 6108  |
| L_90~270 (85) av | 6838  |
| L_45 (65) av     | 10374 |
| L_45 (75) av     | 13900 |
| L_45 (85) av     | 30929 |

Standard: GB/T 29293-2012

C Range: 0 - 360DEG  
C Interval: 30.0DEG  
Test Speed: HIGH  
Temperature:25.3℃  
Operators:  
Test Date:2025-02-15

γ Range: 0 - 180DEG  
γ Interval: 1.0DEG  
Test System:EVERFINE GO-2000B\_V1 SYSTEM V2.00.488  
Humidity:65.0%  
Test Distance:6.360m [K=1.0000]  
Remarks:

## Planar Illuminance Curve



C Range: 0 - 360DEG  
C Interval: 30.0DEG  
Test Speed: HIGH  
Temperature: 25.3 °C  
Operators:  
Test Date: 2025-02-15

$\gamma$  Range: 0 - 180DEG  
 $\gamma$  Interval: 1.0DEG  
Test System: EVERFINE GO-2000B\_V1 SYSTEM V2.00.488  
Humidity: 65.0%  
Test Distance: 6.360m [K=1.0000]  
Remarks:

## LUMINOUS DISTRIBUTION INTENSITY DATA

|  |                 |                  |
|--|-----------------|------------------|
| Test:U:24.00V I:0.4128A P:9.907W PF:1.000 Freq:0Hz<br>Lamp Flux:656.123x1 lm |                 |                  |
| NAME: SF18-24V-3528-144-5700K-80   | TYPE:           | WEIGHT:          |
| SPEC.:   | DIM.: Length=1m | SERIAL No.:      |
| MFR.: OLYMPIA lighting   | SUR.:           | Shielding Angle: |

Table--1

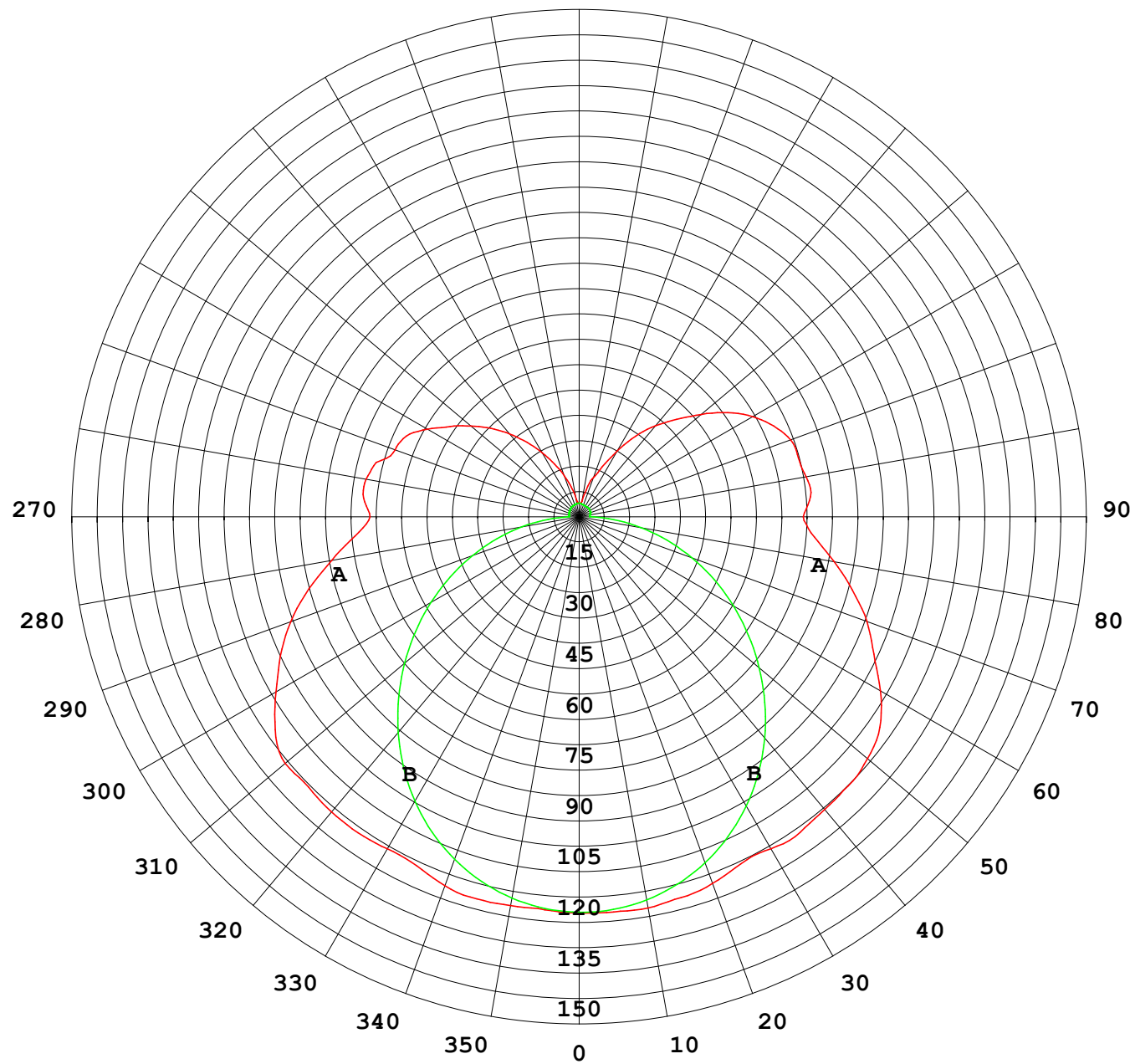
UNIT: cd

| C (DEG)<br>γ (DEG) | 0    | 30   | 60   | 90   | 120  | 150  | 180  | 210  | 240  | 270  | 300  | 330  |  |  |  |  |  |  |  |
|--------------------|------|------|------|------|------|------|------|------|------|------|------|------|--|--|--|--|--|--|--|
| 0                  | 117  | 117  | 117  | 117  | 117  | 117  | 117  | 117  | 117  | 117  | 117  | 117  |  |  |  |  |  |  |  |
| 5                  | 117  | 117  | 116  | 116  | 117  | 117  | 117  | 117  | 117  | 117  | 117  | 117  |  |  |  |  |  |  |  |
| 10                 | 117  | 116  | 115  | 115  | 115  | 117  | 117  | 117  | 116  | 115  | 115  | 116  |  |  |  |  |  |  |  |
| 15                 | 117  | 116  | 113  | 112  | 113  | 115  | 116  | 116  | 114  | 113  | 113  | 116  |  |  |  |  |  |  |  |
| 20                 | 116  | 115  | 110  | 108  | 110  | 114  | 115  | 114  | 111  | 109  | 111  | 115  |  |  |  |  |  |  |  |
| 25                 | 114  | 112  | 107  | 103  | 106  | 111  | 113  | 112  | 108  | 104  | 108  | 112  |  |  |  |  |  |  |  |
| 30                 | 113  | 109  | 103  | 97.2 | 102  | 108  | 113  | 109  | 104  | 98.9 | 104  | 109  |  |  |  |  |  |  |  |
| 35                 | 114  | 108  | 97.7 | 90.6 | 96.7 | 106  | 114  | 108  | 98.7 | 92.5 | 99.0 | 108  |  |  |  |  |  |  |  |
| 40                 | 114  | 106  | 91.4 | 83.3 | 90.7 | 104  | 113  | 106  | 93.0 | 85.4 | 92.7 | 106  |  |  |  |  |  |  |  |
| 45                 | 113  | 104  | 84.9 | 75.5 | 83.8 | 102  | 112  | 104  | 86.5 | 77.7 | 86.1 | 104  |  |  |  |  |  |  |  |
| 50                 | 113  | 101  | 78.1 | 67.4 | 76.7 | 98.7 | 111  | 101  | 79.8 | 69.6 | 79.2 | 101  |  |  |  |  |  |  |  |
| 55                 | 110  | 98.4 | 70.6 | 59.1 | 68.9 | 95.6 | 108  | 98.1 | 71.9 | 61.2 | 71.6 | 97.8 |  |  |  |  |  |  |  |
| 60                 | 103  | 93.8 | 63.8 | 50.6 | 61.7 | 91.0 | 103  | 93.2 | 65.1 | 52.7 | 64.4 | 93.6 |  |  |  |  |  |  |  |
| 65                 | 97.4 | 87.3 | 57.5 | 42.1 | 55.3 | 85.3 | 96.1 | 87.3 | 59.0 | 44.2 | 57.8 | 87.1 |  |  |  |  |  |  |  |
| 70                 | 90.6 | 80.3 | 51.5 | 33.6 | 49.2 | 79.0 | 90.5 | 81.0 | 52.9 | 35.5 | 51.3 | 79.8 |  |  |  |  |  |  |  |
| 75                 | 82.7 | 73.3 | 45.3 | 25.2 | 43.2 | 71.2 | 83.5 | 73.2 | 46.7 | 26.9 | 44.8 | 72.8 |  |  |  |  |  |  |  |
| 80                 | 74.2 | 64.8 | 38.8 | 17.2 | 36.4 | 63.7 | 76.5 | 65.6 | 39.7 | 18.5 | 38.0 | 64.2 |  |  |  |  |  |  |  |
| 85                 | 66.6 | 56.5 | 31.4 | 9.28 | 29.0 | 57.0 | 69.8 | 58.7 | 32.0 | 10.4 | 30.7 | 55.7 |  |  |  |  |  |  |  |
| 90                 | 61.8 | 50.1 | 25.2 | 3.05 | 24.1 | 53.0 | 66.2 | 53.5 | 25.6 | 3.28 | 23.8 | 49.0 |  |  |  |  |  |  |  |
| 95                 | 64.0 | 51.2 | 25.1 | 3.04 | 24.7 | 55.3 | 68.6 | 55.0 | 25.2 | 3.16 | 23.4 | 49.8 |  |  |  |  |  |  |  |
| 100                | 63.9 | 52.9 | 21.1 | 3.05 | 24.6 | 58.1 | 68.1 | 56.9 | 25.0 | 3.28 | 20.0 | 51.4 |  |  |  |  |  |  |  |
| 105                | 62.1 | 50.3 | 19.2 | 3.13 | 24.1 | 58.9 | 67.1 | 58.0 | 25.6 | 3.39 | 18.0 | 47.9 |  |  |  |  |  |  |  |
| 110                | 57.9 | 48.7 | 18.9 | 3.22 | 24.0 | 56.3 | 66.5 | 56.4 | 25.8 | 3.54 | 18.2 | 44.8 |  |  |  |  |  |  |  |
| 115                | 56.4 | 44.9 | 19.6 | 3.31 | 23.9 | 52.9 | 63.4 | 53.5 | 25.9 | 3.64 | 17.2 | 44.4 |  |  |  |  |  |  |  |
| 120                | 51.8 | 40.3 | 18.4 | 3.39 | 22.3 | 47.9 | 59.2 | 48.8 | 24.2 | 3.67 | 16.6 | 39.8 |  |  |  |  |  |  |  |
| 125                | 46.5 | 37.5 | 16.2 | 3.41 | 20.0 | 42.7 | 53.6 | 43.6 | 22.0 | 3.76 | 14.8 | 36.3 |  |  |  |  |  |  |  |
| 130                | 41.8 | 33.9 | 14.4 | 3.46 | 17.4 | 38.1 | 47.1 | 38.9 | 19.2 | 3.83 | 13.5 | 32.9 |  |  |  |  |  |  |  |
| 135                | 37.0 | 27.9 | 12.2 | 3.60 | 15.0 | 33.4 | 40.8 | 34.2 | 16.6 | 3.82 | 11.4 | 27.2 |  |  |  |  |  |  |  |
| 140                | 31.9 | 23.2 | 9.41 | 3.72 | 12.9 | 28.6 | 35.1 | 29.5 | 14.3 | 3.74 | 9.46 | 19.9 |  |  |  |  |  |  |  |
| 145                | 26.8 | 18.0 | 7.46 | 3.77 | 11.0 | 22.9 | 29.1 | 24.1 | 12.1 | 3.69 | 7.75 | 15.1 |  |  |  |  |  |  |  |
| 150                | 21.8 | 14.0 | 5.91 | 3.77 | 8.96 | 18.4 | 22.4 | 19.3 | 10.0 | 3.70 | 6.43 | 12.7 |  |  |  |  |  |  |  |
| 155                | 17.2 | 10.3 | 5.16 | 3.80 | 7.05 | 15.0 | 16.4 | 15.3 | 7.64 | 3.71 | 5.53 | 9.93 |  |  |  |  |  |  |  |
| 160                | 12.8 | 7.92 | 4.77 | 3.88 | 5.51 | 11.4 | 12.3 | 11.6 | 5.83 | 3.76 | 5.18 | 7.43 |  |  |  |  |  |  |  |
| 165                | 9.17 | 5.99 | 4.64 | 3.93 | 4.55 | 7.55 | 8.18 | 7.49 | 4.57 | 3.84 | 4.77 | 5.68 |  |  |  |  |  |  |  |
| 170                | 5.40 | 4.72 | 4.43 | 4.00 | 4.36 | 5.13 | 4.58 | 5.05 | 4.25 | 3.92 | 4.51 | 4.97 |  |  |  |  |  |  |  |
| 175                | 4.23 | 4.24 | 4.44 | 4.07 | 4.15 | 4.35 | 3.97 | 4.28 | 4.03 | 4.00 | 4.49 | 4.49 |  |  |  |  |  |  |  |
| 180                | 4.02 | 4.08 | 4.16 | 4.09 | 4.22 | 4.23 | 3.99 | 4.09 | 4.14 | 4.07 | 4.23 | 4.23 |  |  |  |  |  |  |  |

C Range: 0 - 360DEG  
C Interval: 30.0DEG  
Test Speed: HIGH  
Temperature:25.3℃  
Operators:  
Test Date:2025-02-15

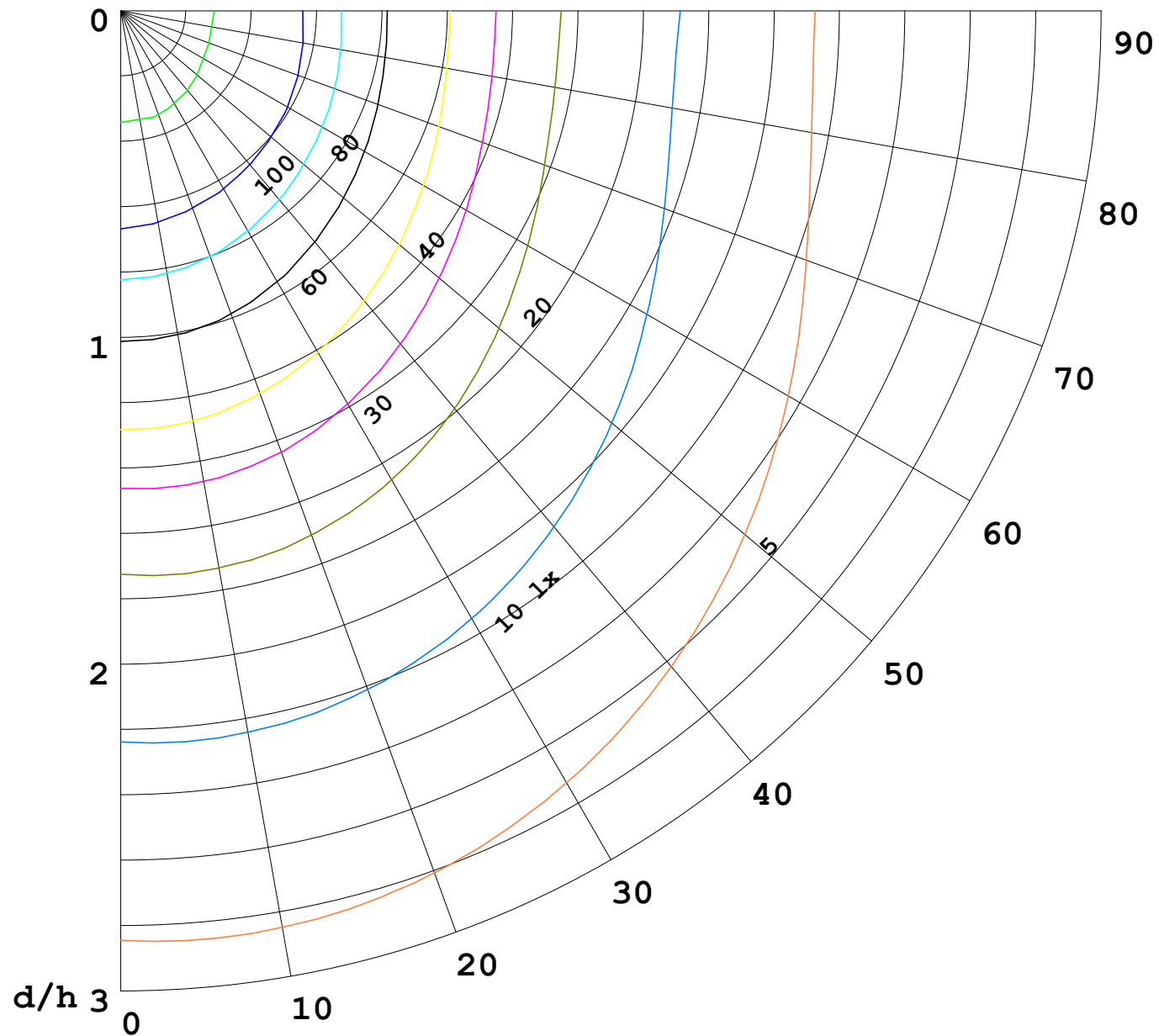
γ Range: 0 - 180DEG  
γ Interval: 1.0DEG  
Test System:EVERFINE GO-2000B\_V1 SYSTEM V2.00.488  
Humidity:65.0%  
Test Distance:6.360m [K=1.0000]  
Remarks:

I (cd)



1000 lm

$\kappa = 1$



F = 1000 lm  
 K = 0.7  
 Hcc = 0.8 m  
 Hfc = 0.0 m  
 Eave = 100 lx

|       | Pcc | Pw | Pfc |
|-------|-----|----|-----|
| ————— | 70  | 50 | 30  |
| ————— | 50  | 30 | 20  |

