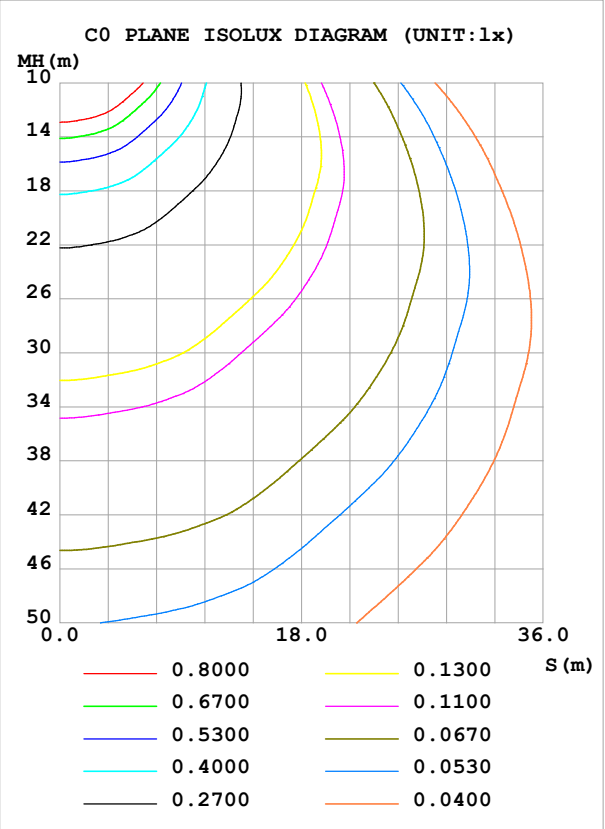
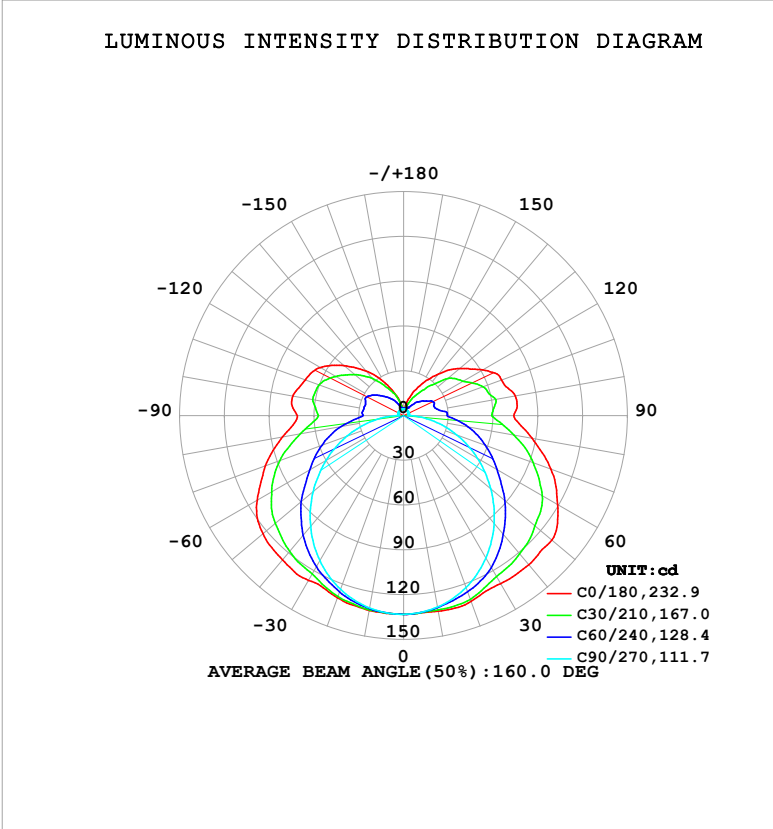


LUMINAIRE PHOTOMETRIC TEST REPORT

Test:U:24.00V I:0.4085A P:9.804W PF:1.000 Freq:0Hz Lamp Flux:741.444x1 lm		
NAME: SF18-24V-2835-120-3000K-80	TYPE:	WEIGHT:
SPEC.:	DIM.: Length=1m	SERIAL No.:
MFR.: OLympia lighting	SUR.:	Shielding Angle:

DATA OF LAMP		PHOTOMETRIC DATA				Eff: 75.63 lm/W
MODEL	2835	Imax (cd)	133.6	S/MH(C0/180)	1.47	
NOMINAL POWER(W)	10	LOR(%)	100.0	S/MH(C90/270)	1.25	
RATED VOLTAGE(V)	24	TOTAL FLUX(lm)	741.44	η UP,DN(C0-180)	13.0,36.8	
NOMINAL FLUX(lm)	741.444	CIE CLASS	SEMI-D.	η UP,DN(C180-360)	13.2,37.0	
LAMPS INSIDE	1	η up (%)	26.2	CIBSE SHR NOM	1.50	
TEST VOLTAGE(V)		η down (%)	73.8	CIBSE SHR MAX	1.55	



C Range: 0 - 360DEG	γ Range: 0 - 180DEG
C Interval: 30.0DEG	γ Interval: 1.0DEG
Test Speed: HIGH	Test System:EVERFINE GO-2000B_V1 SYSTEM V2.00.488
Temperature:25.3℃	Humidity:65.0%
Operators:	Test Distance:6.360m [K=1.0000]
Test Date:2025-02-19	Remarks:

## ZONAL FLUX DIAGRAM

## ZONAL FLUX DIAGRAM:

$\gamma$	C0	C45	C90	C135	C180	C225	C270	C315	$\gamma$	$\Phi$ zone	$\Phi$ total	%lum, lamp
10	133.1	131.4	130.3	131.4	132.6	131.8	130.9	131.9	0- 10	12.63	12.63	1.7,1.7
20	132.3	128.2	122.5	126.4	129.8	127.4	123.8	129.1	10- 20	36.76	49.39	6.66,6.66
30	130.0	121.1	110.2	118.3	127.4	119.8	112.3	122.3	20- 30	57.25	106.6	14.4,14.4
40	130.4	112.4	94.38	109.8	126.3	111.8	97.00	113.9	30- 40	73.00	179.6	24.2,24.2
50	129.7	101.8	76.21	98.39	123.0	100.9	79.09	103.3	40- 50	82.63	262.3	35.4,35.4
60	119.2	89.79	57.12	84.88	113.3	87.33	59.97	91.09	50- 60	85.07	347.3	46.8,46.8
70	105.0	75.34	37.84	70.94	98.58	73.35	40.47	76.45	60- 70	79.82	427.2	57.6,57.6
80	87.30	59.48	19.24	54.47	82.29	56.38	21.32	60.29	70- 80	68.21	495.4	66.8,66.8
90	73.77	44.18	3.440	41.61	71.20	42.21	4.038	43.94	80- 90	52.16	547.5	73.8,73.8
100	76.10	43.19	3.463	44.19	75.48	44.52	3.960	43.23	90-100	46.11	593.6	80.1,80.1
110	69.86	39.23	3.553	43.61	70.17	43.81	4.176	38.28	100-110	43.45	637.1	85.9,85.9
120	61.31	32.98	3.651	38.60	64.54	39.67	4.286	33.57	110-120	37.80	674.9	91,91
130	49.24	26.93	3.761	30.87	52.11	32.03	4.387	27.44	120-130	28.81	703.7	94.9,94.9
140	36.42	17.65	3.992	23.22	39.08	24.17	4.373	16.93	130-140	19.21	722.9	97.5,97.5
150	24.36	10.73	4.151	15.69	25.70	16.27	4.321	11.23	140-150	10.84	733.8	99,99
160	14.58	6.869	4.437	9.738	14.30	9.876	4.402	7.203	150-160	5.255	739.0	99.7,99.7
170	5.432	5.208	4.636	5.416	5.253	5.347	4.535	5.370	160-170	1.962	741.0	99.9,99.9
180	4.467	4.655	4.697	4.773	4.442	4.638	4.691	4.790	170-180	0.4716	741.4	100,100
DEG	LUMINOUS INTENSITY:cd									UNIT:lm		

Conical surface Flux(90deg): 220.17 lm

%lum = 29.7%

%lamp = 29.7%

Conical surface Flux(130deg): 388.31 lm

%lum = 52.4%

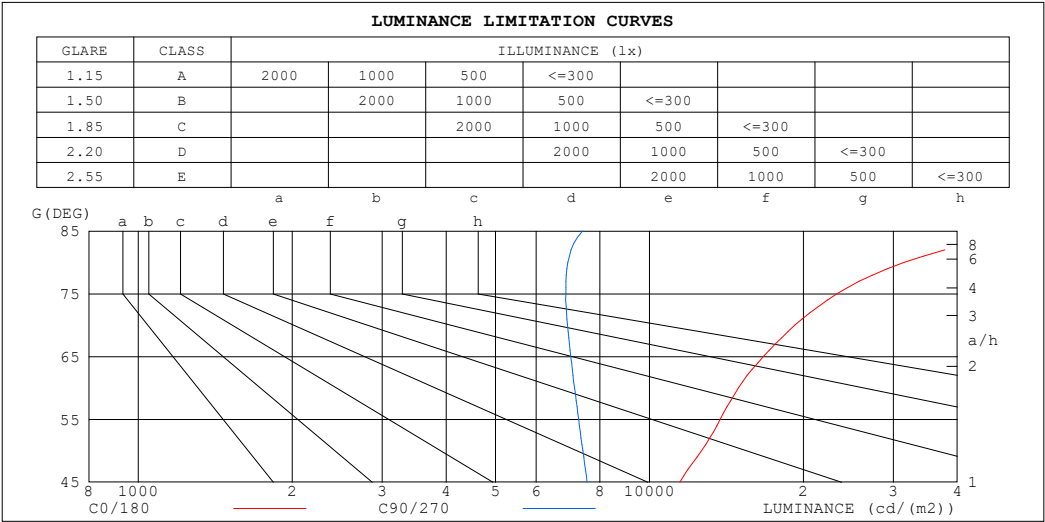
%lamp = 52.4%

C Range: 0 - 360DEG  
 C Interval: 30.0DEG  
 Test Speed: HIGH  
 Temperature:25.3℃  
 Operators:  
 Test Date:2025-02-19

$\gamma$  Range: 0 - 180DEG  
 $\gamma$  Interval: 1.0DEG  
 Test System:EVERFINE GO-2000B\_V1 SYSTEM V2.00.488  
 Humidity:65.0%  
 Test Distance:6.360m [K=1.0000]  
 Remarks:

LUMINANCE LIMITATION CURVES

Test:U:24.00V I:0.4085A P:9.804W PF:1.000 Freq:0Hz Lamp Flux:741.444x1 lm		
NAME: SF18-24V-2835-120-3000K-80	TYPE:	WEIGHT:
SPEC.:	DIM.: Length=1m	SERIAL No.:
MFR.: OLympia lighting	SUR.:	Shielding Angle:



LUMINANCE cd/(m2)		
G (DEG)	C0/180	C90/270
85	56893	7402
80	31505	6920
75	23288	6860
70	19239	6910
65	16715	7013
60	14936	7135
55	13750	7267
50	12646	7405
45	11463	7550

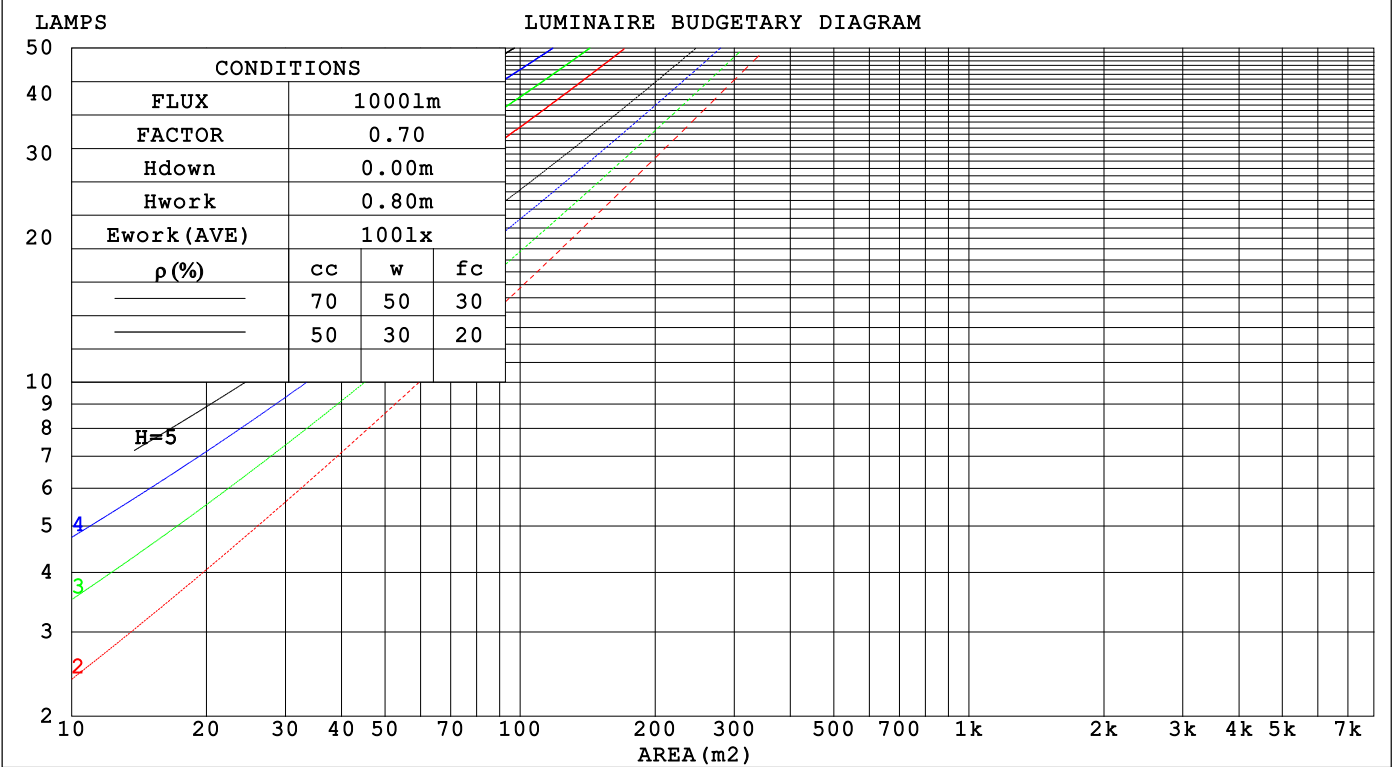
C Range: 0 - 360DEG  
C Interval: 30.0DEG  
Test Speed: HIGH  
Temperature:25.3℃  
Operators:  
Test Date:2025-02-19

γ Range: 0 - 180DEG  
γ Interval: 1.0DEG  
Test System:EVERFINE GO-2000B\_V1 SYSTEM V2.00.488  
Humidity:65.0%  
Test Distance:6.360m [K=1.0000]  
Remarks:

CU AND LUMINAIRE BUDGETARY ESTIMATE DIAGRAM

Test:U:24.00V I:0.4085A P:9.804W PF:1.000 Freq:0Hz Lamp Flux:741.444x1 lm		
NAME: SF18-24V-2835-120-3000K-80	TYPE:	WEIGHT:
SPEC.:	DIM.: Length=1m	SERIAL No.:
MFR.: OLYMPIA lighting	SUR.:	Shielding Angle:

pcc	80%			70%			50%			30%			10%			0
pw	50%	30%	10%	50%	30%	10%	50%	30%	10%	50%	30%	10%	50%	30%	10%	0
pfc	20%			20%			20%			20%			20%			0
RCR	RCR:Room Cavity Ratio															



C Range: 0 - 360DEG  
C Interval: 30.0DEG  
Test Speed: HIGH  
Temperature:25.3℃  
Operators:  
Test Date:2025-02-19

γ Range: 0 - 180DEG  
γ Interval: 1.0DEG  
Test System:EVERFINE GO-2000B\_V1 SYSTEM V2.00.488  
Humidity:65.0%  
Test Distance:6.360m [K=1.0000]  
Remarks:

## WEC AND CCEC

Test:U:24.00V I:0.4085A P:9.804W PF:1.000 Freq:0Hz Lamp Flux:741.444x1 lm		
NAME: SF18-24V-2835-120-3000K-80	TYPE:	WEIGHT:
SPEC.:	DIM.: Length=1m	SERIAL No.:
MFR.: OLympia lighting	SUR.:	Shielding Angle:

pcc	80%			70%			50%			30%			10%			0														
pw	50%	30%	10%	50%	30%	10%	50%	30%	10%	50%	30%	10%	50%	30%	10%	0														
pfc	20%			20%			20%			20%			20%			0														
RCR	RCR:Room Cavity Ratio															Wall Exitance Coefficients(WEC)														
0.0																														
1.0	.381	.217	.069	.366	.209	.066	.337	.194	.062	.311	.180	.058	.287	.167	.054															
2.0	.330	.181	.056	.317	.174	.054	.291	.162	.050	.267	.150	.047	.245	.139	.044															
3.0	.293	.156	.047	.281	.151	.045	.258	.140	.042	.236	.129	.040	.216	.119	.037															
4.0	.264	.137	.040	.253	.132	.039	.232	.123	.037	.212	.114	.034	.193	.105	.032															
5.0	.240	.122	.035	.230	.118	.034	.210	.110	.032	.192	.101	.030	.175	.094	.028															
6.0	.220	.110	.032	.211	.106	.031	.193	.099	.029	.176	.091	.027	.160	.084	.025															
7.0	.203	.100	.028	.194	.097	.028	.178	.090	.026	.162	.083	.024	.148	.077	.023															
8.0	.188	.092	.026	.180	.089	.025	.165	.082	.024	.151	.076	.022	.137	.071	.021															
9.0	.175	.085	.024	.168	.082	.023	.154	.076	.022	.141	.071	.020	.128	.065	.019															
10.0	.164	.079	.022	.157	.076	.021	.144	.071	.020	.132	.066	.019	.120	.061	.017															

pcc	80%			70%			50%			30%			10%			0
pw	50%	30%	10%	50%	30%	10%	50%	30%	10%	50%	30%	10%	50%	30%	10%	0
pfc	20%			20%			20%			20%			20%			0
RCR	RCR:Room Cavity Ratio						Ceiling Cavity Exitance Coefficients (CCEC)									
0.0	.390	.390	.390	.333	.333	.333	.227	.227	.227	.131	.131	.131	.042	.042	.042	
1.0	.386	.356	.330	.330	.306	.284	.226	.210	.196	.130	.122	.114	.042	.039	.037	
2.0	.380	.334	.296	.325	.287	.256	.223	.199	.178	.128	.116	.104	.041	.037	.034	
3.0	.372	.318	.274	.319	.274	.238	.219	.190	.167	.127	.111	.098	.041	.036	.032	
4.0	.365	.306	.260	.313	.264	.226	.215	.184	.159	.125	.108	.094	.040	.035	.031	
5.0	.357	.296	.251	.307	.256	.218	.211	.179	.154	.122	.105	.091	.039	.034	.030	
6.0	.350	.288	.244	.301	.250	.212	.208	.175	.150	.120	.103	.089	.039	.034	.029	
7.0	.343	.282	.239	.295	.244	.208	.204	.171	.147	.118	.101	.088	.038	.033	.029	
8.0	.336	.276	.235	.290	.240	.205	.200	.168	.145	.117	.099	.087	.038	.033	.029	
9.0	.330	.272	.232	.285	.236	.202	.197	.166	.144	.115	.098	.086	.037	.032	.028	
10.0	.324	.267	.230	.280	.232	.200	.194	.163	.142	.113	.097	.085	.037	.032	.028	

C Range: 0 - 360DEG  
C Interval: 30.0DEG  
Test Speed: HIGH  
Temperature:25.3℃  
Operators:  
Test Date:2025-02-19

γ Range: 0 - 180DEG  
γ Interval: 1.0DEG  
Test System:EVERFINE GO-2000B\_V1 SYSTEM V2.00.488  
Humidity:65.0%  
Test Distance:6.360m [K=1.0000]  
Remarks:

UGR(Unified Glare Rating) Table

Test:U:24.00V I:0.4085A P:9.804W PF:1.000 Freq:0Hz Lamp Flux:741.444x1 lm											
NAME: SF18-24V-2835-120-3000K-80						TYPE:		WEIGHT:			
SPEC.:						DIM.: Length=1m		SERIAL No.:			
MFR.: OLympia lighting						SUR.:		Shielding Angle:			
ceiling/cavity	0.7	0.7	0.5	0.5	0.3	0.7	0.7	0.5	0.5	0.3	
walls	0.5	0.3	0.5	0.3	0.3	0.5	0.3	0.5	0.3	0.3	
working plane	0.2	0.2	0.2	0.2	0.2	0.2	0.2	0.2	0.2	0.2	
Room dimensions		Viewed crosswise					Viewed endwise				
x = 2H y = 2H	2H	20.9	22.2	21.5	22.8	23.5	17.8	19.1	18.4	19.7	20.4
	3H	23.7	24.9	24.3	25.5	26.3	19.4	20.6	20.1	21.3	22.0
	4H	25.2	26.3	25.8	27.0	27.7	20.2	21.3	20.9	22.0	22.8
	6H	26.8	27.8	27.4	28.5	29.3	20.8	21.9	21.5	22.6	23.4
	8H	27.7	28.7	28.3	29.4	30.2	21.1	22.1	21.8	22.8	23.6
	12H	28.7	29.6	29.4	30.3	31.2	21.3	22.2	22.0	22.9	23.8
4H	2H	21.4	22.5	22.1	23.2	24.0	19.2	20.3	19.8	20.9	21.7
	3H	24.4	25.4	25.1	26.1	26.9	21.0	22.0	21.7	22.7	23.5
	4H	26.1	27.0	26.8	27.7	28.6	21.9	22.8	22.7	23.6	24.4
	6H	27.9	28.7	28.7	29.5	30.4	22.8	23.6	23.5	24.3	25.2
	8H	28.9	29.7	29.7	30.4	31.3	23.1	23.8	23.9	24.6	25.5
	12H	30.1	30.8	30.8	31.5	32.5	23.4	24.1	24.1	24.8	25.8
8H	4H	26.4	27.2	27.2	27.9	28.8	23.1	23.9	23.9	24.7	25.6
	6H	28.5	29.1	29.3	29.9	30.9	24.3	24.9	25.1	25.7	26.7
	8H	29.7	30.3	30.5	31.1	32.1	24.8	25.4	25.6	26.2	27.2
	12H	31.1	31.6	31.9	32.4	33.4	25.3	25.8	26.1	26.6	27.6
12H	4H	26.4	27.1	27.2	27.9	28.8	23.5	24.2	24.3	25.0	25.9
	6H	28.6	29.2	29.4	30.0	30.9	24.9	25.5	25.7	26.3	27.2
	8H	29.9	30.4	30.8	31.2	32.2	25.6	26.1	26.4	26.9	27.9
Variations with the observer position at spacings(CIE Pub.117):											
S = 1.0H		+ 0.1 / - 0.1					+ 0.1 / - 0.1				
1.5H		+ 0.2 / - 0.2					+ 0.2 / - 0.3				
2.0H		+ 0.2 / - 0.3					+ 0.2 / - 0.4				

CIE Pub.117, 741.4 lm Total Lamp Luminous Flux Correct (8log(F/F0) = -1.0)  
Area: 0.016 m2

C Range: 0 - 360DEG  
C Interval: 30.0DEG  
Test Speed: HIGH  
Temperature:25.3℃  
Operators:  
Test Date:2025-02-19

γ Range: 0 - 180DEG  
γ Interval: 1.0DEG  
Test System:EVERFINE GO-2000B\_V1 SYSTEM V2.00.488  
Humidity:65.0%  
Test Distance:6.360m [K=1.0000]  
Remarks:

## UTILIZATION FACTORS TABLE

Test:U:24.00V I:0.4085A P:9.804W PF:1.000 Freq:0Hz Lamp Flux:741.444x1 lm		
NAME: SF18-24V-2835-120-3000K-80	TYPE:	WEIGHT:
SPEC.:	DIM.: Length=1m	SERIAL No.:
MFR.: OLympia lighting	SUR.:	Shielding Angle:

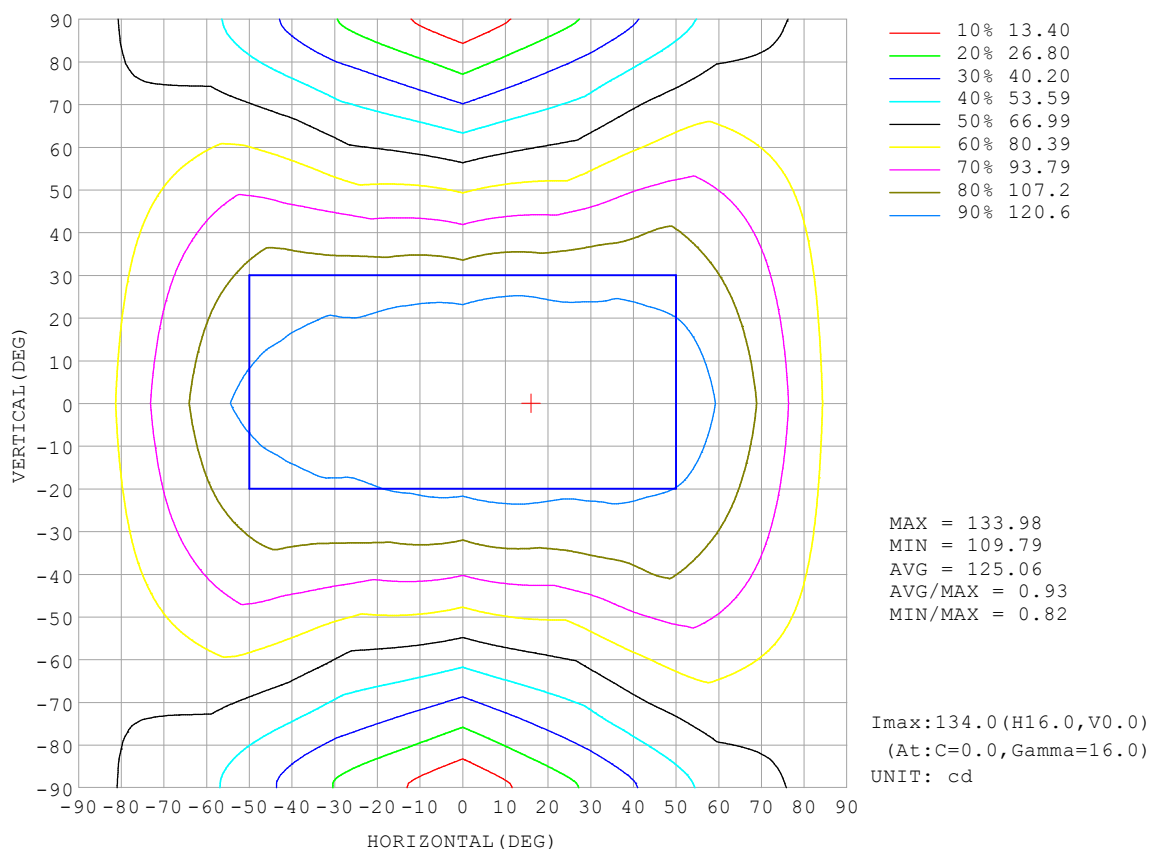
REFLECTANCE										
Ceiling	0.8	0.8	0.8	0.7	0.7	0.7	0.5	0.5	0.5	0
Walls	0.7	0.5	0.3	0.7	0.5	0.3	0.7	0.5	0.3	0
Working plane	0.2	0.2	0.2	0.2	0.2	0.2	0.2	0.2	0.2	0
ROOM INDEX	UTILIZATION FACTORS (PERCENT) $k(RI) \times RCR = 5$									
$k = 0.60$	45	32	25	44	32	25	41	31	24	17
0.80	54	41	33	52	40	32	49	38	31	23
1.00	62	48	40	59	47	39	55	47	38	28
1.25	69	56	47	66	54	46	61	51	44	33
1.50	74	61	53	71	59	51	65	55	48	37
2.00	81	70	61	78	67	60	71	62	56	43
2.50	86	75	67	82	72	65	74	67	61	46
3.00	90	80	73	85	77	70	77	71	65	50
4.00	95	86	80	90	83	77	81	76	71	54
5.00	98	91	84	93	87	81	84	79	75	57
ROOM INDEX	UF (total)									Direct
According to DIN EN 13032-2 2004			Suspended					SHRNOM = 1.25		

C Range: 0 - 360DEG  
 C Interval: 30.0DEG  
 Test Speed: HIGH  
 Temperature: 25.3 °C  
 Operators:  
 Test Date: 2025-02-19

γ Range: 0 - 180DEG  
 γ Interval: 1.0DEG  
 Test System: EVERFINE GO-2000B\_V1 SYSTEM V2.00.488  
 Humidity: 65.0%  
 Test Distance: 6.360m [K=1.0000]  
 Remarks:

## ISOCANDELA DIAGRAM

Test:U:24.00V I:0.4085A P:9.804W PF:1.000 Freq:0Hz Lamp Flux:741.444x1 lm		
NAME: SF18-24V-2835-120-3000K-80	TYPE:	WEIGHT:
SPEC.:	DIM.: Length=1m	SERIAL No.:
MFR.: OLympia lighting	SUR.:	Shielding Angle:



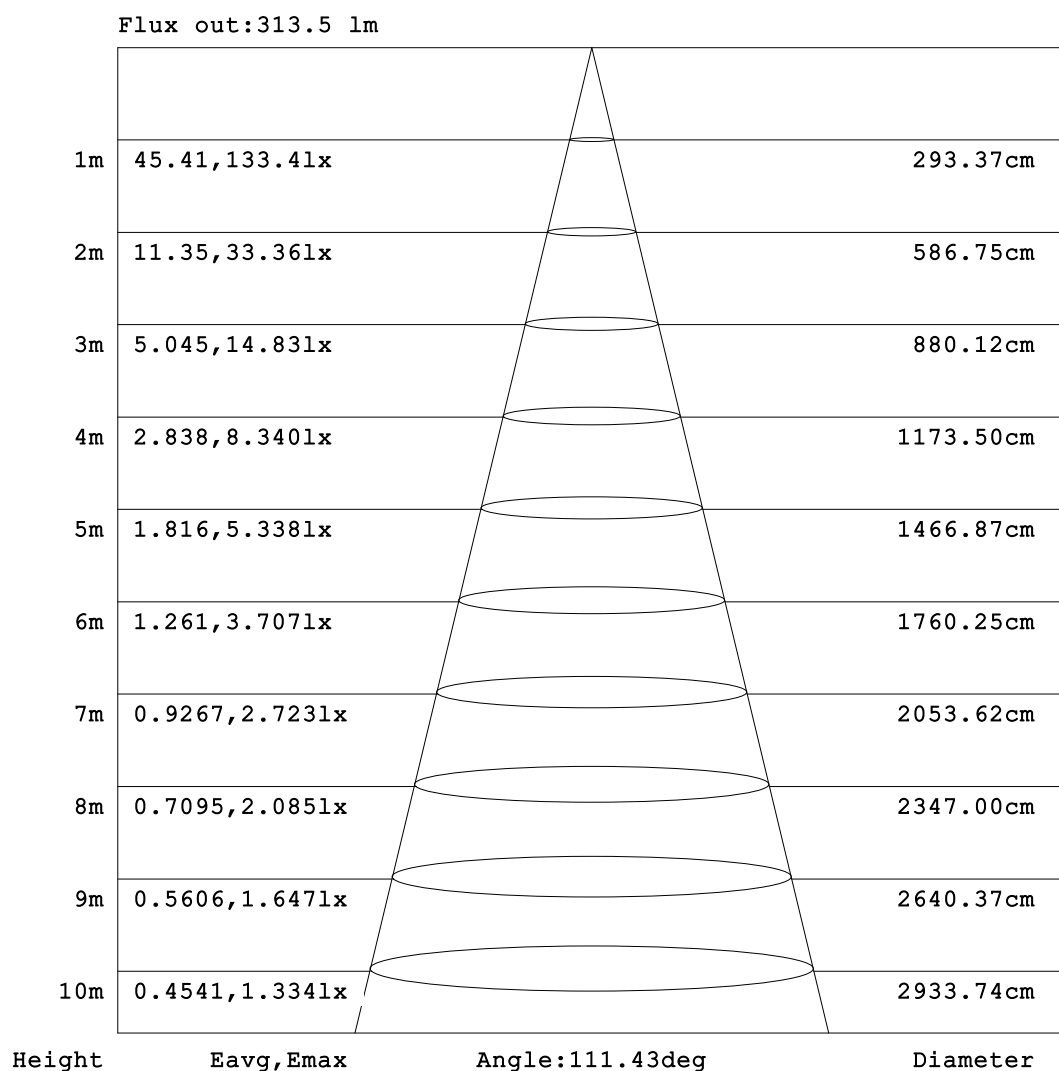
C Range: 0 - 360DEG  
C Interval: 30.0DEG  
Test Speed: HIGH  
Temperature:25.3℃  
Operators:  
Test Date:2025-02-19

γ Range: 0 - 180DEG  
γ Interval: 1.0DEG  
Test System:EVERFINE GO-2000B\_V1 SYSTEM V2.00.488  
Humidity:65.0%  
Test Distance:6.360m [K=1.0000]  
Remarks:



## AAI Figure

Test:U:24.00V I:0.4085A P:9.804W PF:1.000 Freq:0Hz Lamp Flux:741.444x1 lm		
NAME: SF18-24V-2835-120-3000K-80	TYPE:	WEIGHT:
SPEC.:	DIM.: Length=1m	SERIAL No.:
MFR.: OLympia lighting	SUR.:	Shielding Angle:



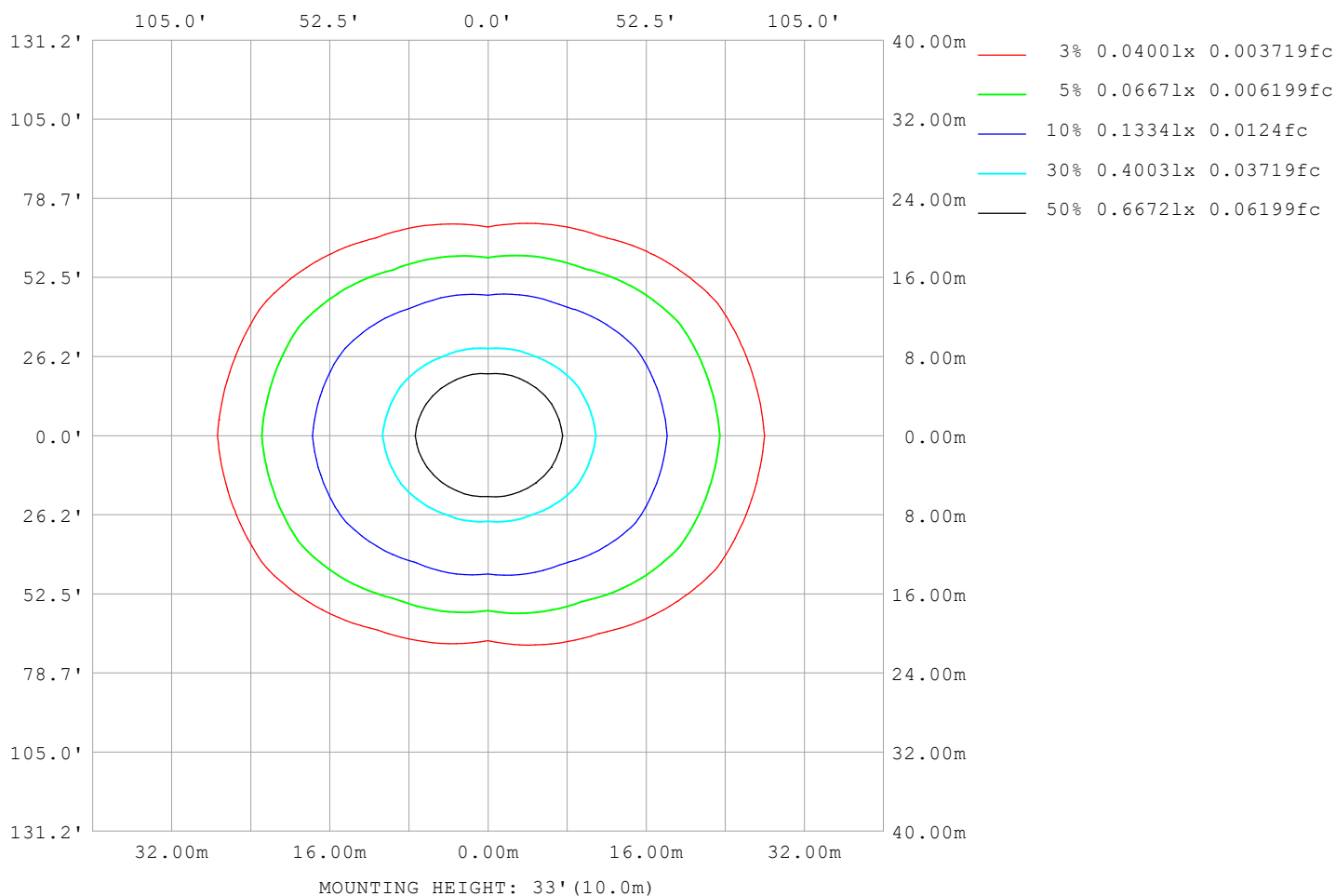
Note:The Curves indicate the illuminated area and the average illumination when the luminaire is at different distance.

C Range: 0 - 360DEG  
C Interval: 30.0DEG  
Test Speed: HIGH  
Temperature:25.3℃  
Operators:  
Test Date:2025-02-19

γ Range: 0 - 180DEG  
γ Interval: 1.0DEG  
Test System:EVERFINE GO-2000B\_V1 SYSTEM V2.00.488  
Humidity:65.0%  
Test Distance:6.360m [K=1.0000]  
Remarks:

## ISOLUX DIAGRAM

Test:U:24.00V I:0.4085A P:9.804W PF:1.000 Freq:0Hz Lamp Flux:741.444x1 lm		
NAME: SF18-24V-2835-120-3000K-80	TYPE:	WEIGHT:
SPEC.:	DIM.: Length=1m	SERIAL No.:
MFR.: OLympia lighting	SUR.:	Shielding Angle:



C Range: 0 - 360DEG  
C Interval: 30.0DEG  
Test Speed: HIGH  
Temperature: 25.3°C  
Operators:  
Test Date: 2025-02-19

γ Range: 0 - 180DEG  
γ Interval: 1.0DEG  
Test System: EVERFINE GO-2000B\_V1 SYSTEM V2.00.488  
Humidity: 65.0%  
Test Distance: 6.360m [K=1.0000]  
Remarks:

## LED Avg.L Report

Test:U:24.00V I:0.4085A P:9.804W PF:1.000 Freq:0Hz Lamp Flux:741.444x1 lm		
NAME: SF18-24V-2835-120-3000K-80	TYPE:	WEIGHT:
SPEC.:	DIM.: Length=1m	SERIAL No.:
MFR.: OLympia lighting	SUR.:	Shielding Angle:

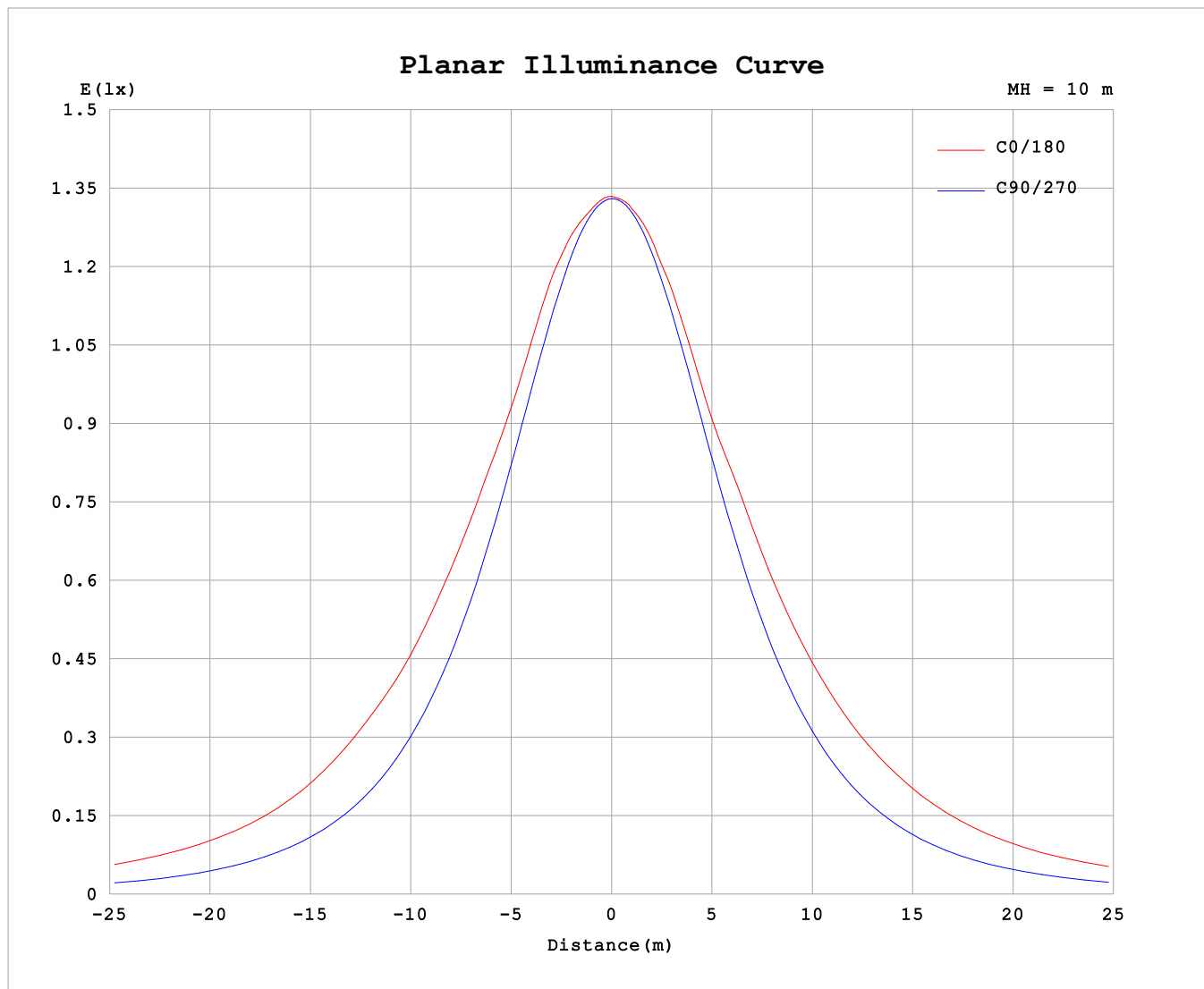
AvgL	cd/m2
L_0~180 (65) av	16140
L_0~180 (75) av	22543
L_0~180 (85) av	55132
L_90~270 (65) av	7225
L_90~270 (75) av	7149
L_90~270 (85) av	8031
L_45 (65) av	12074
L_45 (75) av	16115
L_45 (85) av	35751

Standard: GB/T 29293-2012

C Range: 0 - 360DEG  
C Interval: 30.0DEG  
Test Speed: HIGH  
Temperature:25.3℃  
Operators:  
Test Date:2025-02-19

γ Range: 0 - 180DEG  
γ Interval: 1.0DEG  
Test System:EVERFINE GO-2000B\_V1 SYSTEM V2.00.488  
Humidity:65.0%  
Test Distance:6.360m [K=1.0000]  
Remarks:

## Planar Illuminance Curve



C Range: 0 - 360DEG  
C Interval: 30.0DEG  
Test Speed: HIGH  
Temperature: 25.3 °C  
Operators:  
Test Date: 2025-02-19

$\gamma$  Range: 0 - 180DEG  
 $\gamma$  Interval: 1.0DEG  
Test System: EVERFINE GO-2000B\_V1 SYSTEM V2.00.488  
Humidity: 65.0%  
Test Distance: 6.360m [K=1.0000]  
Remarks:

## LUMINOUS DISTRIBUTION INTENSITY DATA

Test:U:24.00V I:0.4085A P:9.804W PF:1.000 Freq:0Hz Lamp Flux:741.444x1 lm											
NAME: SF18-24V-2835-120-3000K-80						TYPE:			WEIGHT:		
SPEC.:						DIM.: Length=1m			SERIAL No.:		
MFR.: OLympia lighting						SUR.:			Shielding Angle:		

Table--1

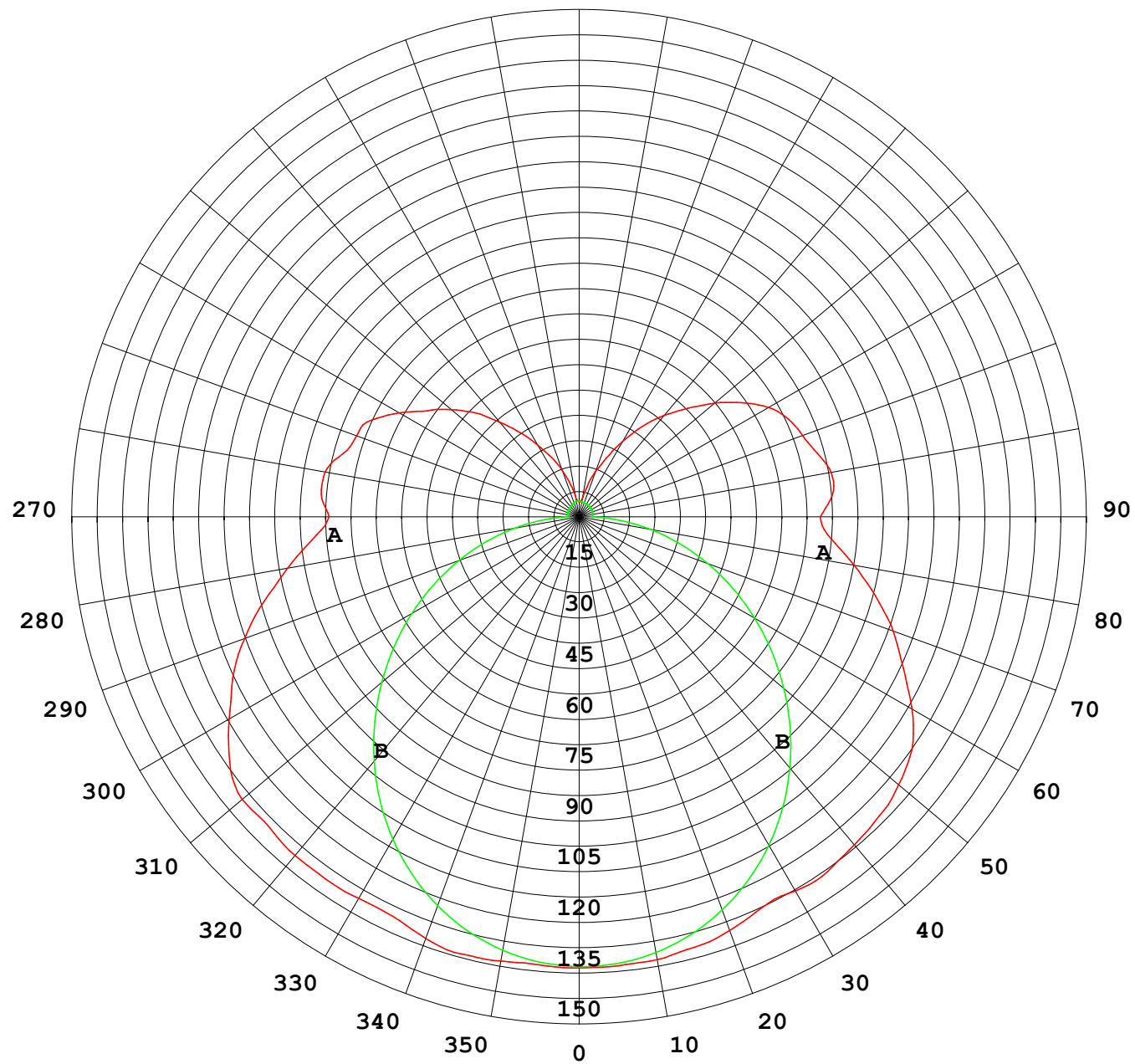
UNIT: cd

C (DEG) γ (DEG)	0	30	60	90	120	150	180	210	240	270	300	330							
0	133	133	133	133	133	133	133	133	133	133	133	133							
5	133	133	132	132	132	133	133	133	133	133	133	133							
10	133	132	131	130	131	132	133	132	131	131	131	132							
15	134	132	128	127	128	130	131	131	129	128	129	132							
20	132	131	126	122	124	128	130	129	126	124	127	132							
25	130	128	122	117	120	125	127	126	122	119	124	128							
30	130	125	118	110	115	122	127	123	117	112	119	125							
35	130	123	111	103	109	120	128	121	111	105	113	124							
40	130	121	104	94.4	102	117	126	119	105	97.0	106	122							
45	129	119	96.5	85.5	94.5	114	125	116	97.2	88.3	98.6	119							
50	130	115	88.6	76.2	86.5	110	123	112	89.5	79.1	90.8	116							
55	126	112	80.0	66.7	77.6	106	120	108	80.5	69.6	82.2	113							
60	119	107	72.3	57.1	69.4	100	113	102	72.6	60.0	74.2	108							
65	113	100	65.3	47.5	62.2	94.1	106	95.7	65.6	50.2	67.0	101							
70	105	92.4	58.2	37.8	55.1	86.8	98.6	88.4	58.3	40.5	59.7	93.2							
75	96.2	84.4	51.3	28.4	47.9	77.8	90.5	79.2	50.8	30.8	52.5	85.3							
80	87.3	75.0	43.9	19.2	40.0	68.9	82.3	70.1	42.6	21.3	45.0	75.6							
85	79.1	66.2	35.9	10.3	31.4	61.2	74.6	62.1	33.6	12.1	36.8	66.5							
90	73.8	59.1	29.2	3.44	26.4	56.8	71.2	57.1	27.3	4.04	29.0	58.9							
95	76.4	60.8	29.0	3.43	26.9	59.4	75.0	59.4	27.9	3.85	28.6	60.1							
100	76.1	62.7	23.6	3.46	26.6	61.8	75.5	61.8	27.2	3.96	24.4	62.1							
105	72.1	58.8	21.6	3.50	26.4	62.2	72.7	61.4	26.8	4.06	21.7	59.1							
110	69.9	56.8	21.7	3.55	26.5	60.7	70.2	60.3	27.2	4.18	22.2	54.3							
115	67.6	51.5	22.0	3.60	26.6	57.2	68.2	57.2	28.2	4.25	22.2	52.4							
120	61.3	46.2	19.7	3.65	25.0	52.2	64.5	52.6	26.7	4.29	19.5	47.7							
125	54.5	43.0	17.1	3.67	22.7	46.8	58.7	47.6	24.2	4.36	18.1	43.2							
130	49.2	39.0	14.9	3.76	19.9	41.9	52.1	42.9	21.1	4.39	15.8	39.1							
135	43.4	30.8	13.1	3.89	17.1	36.8	45.3	37.6	18.2	4.39	13.3	32.1							
140	36.4	25.2	10.0	3.99	14.7	31.8	39.1	32.6	15.7	4.37	11.1	22.8							
145	30.3	19.6	7.43	4.07	12.7	25.8	32.7	26.5	13.4	4.35	9.07	18.9							
150	24.4	15.2	6.25	4.15	10.6	20.8	25.7	21.4	11.1	4.32	7.38	15.1							
155	19.4	11.7	5.96	4.30	8.29	17.0	19.2	17.3	8.58	4.35	6.32	11.3							
160	14.6	8.15	5.59	4.44	6.48	13.0	14.3	13.1	6.63	4.40	5.96	8.45							
165	9.88	5.95	5.25	4.54	5.27	8.50	9.19	8.53	5.26	4.47	5.40	6.39							
170	5.43	5.40	5.02	4.64	5.00	5.84	5.25	5.79	4.90	4.53	5.15	5.59							
175	4.75	4.98	5.00	4.70	4.75	4.96	4.54	4.89	4.64	4.60	5.11	5.15							
180	4.47	4.67	4.64	4.70	4.75	4.79	4.44	4.64	4.63	4.69	4.76	4.82							

C Range: 0 - 360DEG  
C Interval: 30.0DEG  
Test Speed: HIGH  
Temperature:25.3℃  
Operators:  
Test Date:2025-02-19

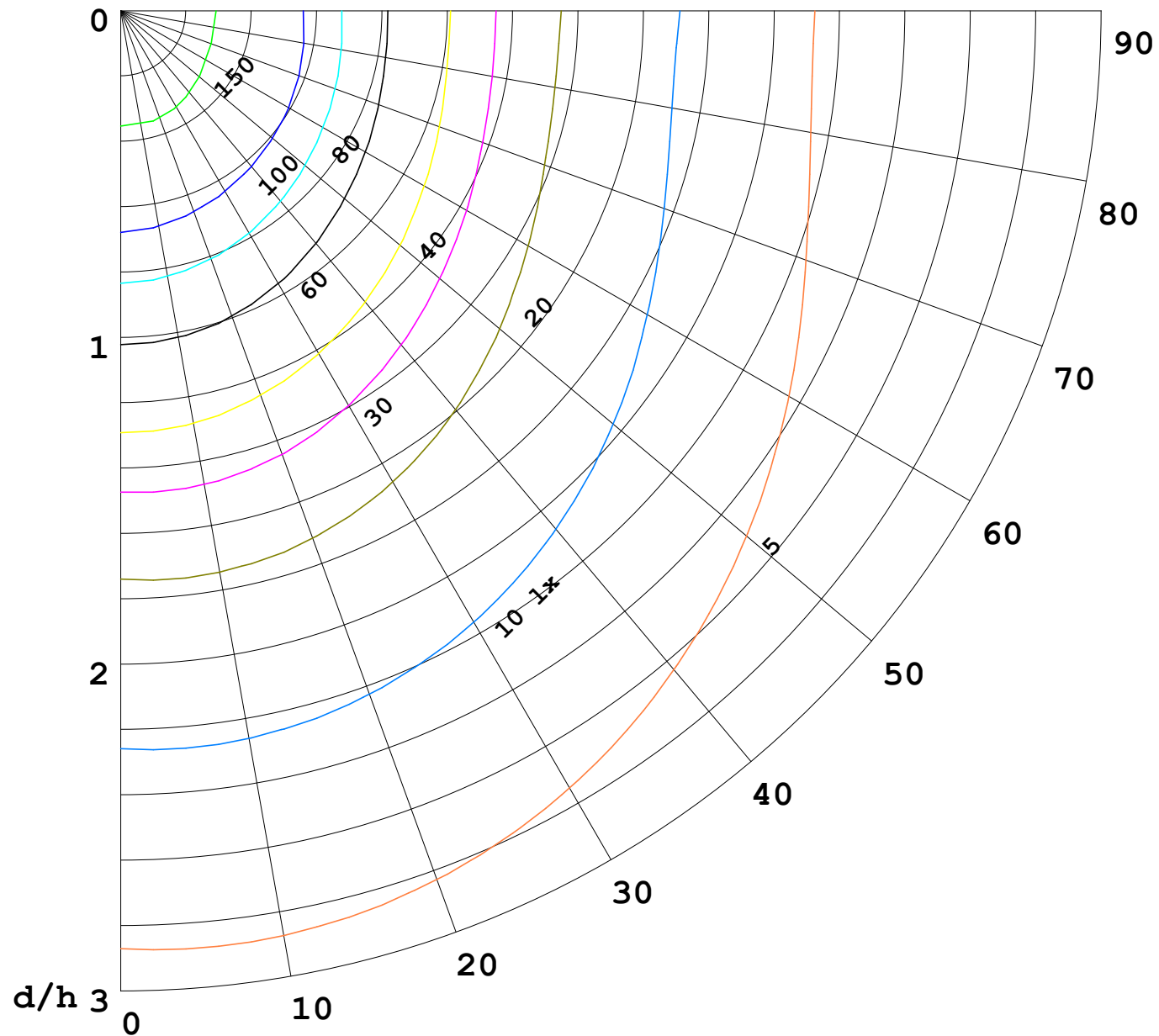
γ Range: 0 - 180DEG  
γ Interval: 1.0DEG  
Test System:EVERFINE GO-2000B\_V1 SYSTEM V2.00.488  
Humidity:65.0%  
Test Distance:6.360m [K=1.0000]  
Remarks:

I (cd)



1000 lm

$\kappa = 1$



F = 1000 lm  
 K = 0.7  
 Hcc = 0.8 m  
 Hfc = 0.0 m  
 Eave = 100 lx

	Pcc	Pw	Pfc
—————	70	50	30
—————	50	30	20

