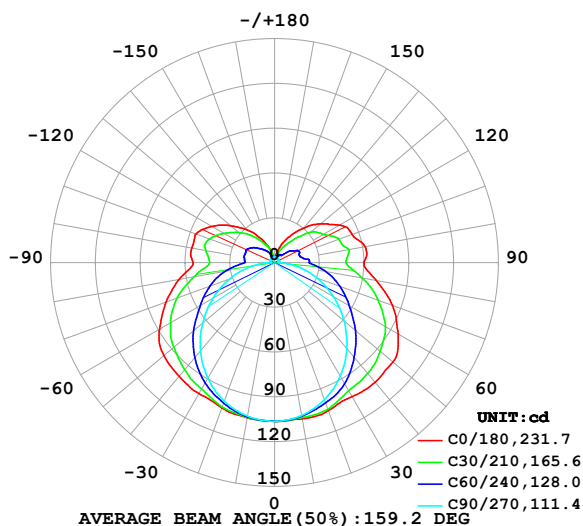


LUMINAIRE PHOTOMETRIC TEST REPORT

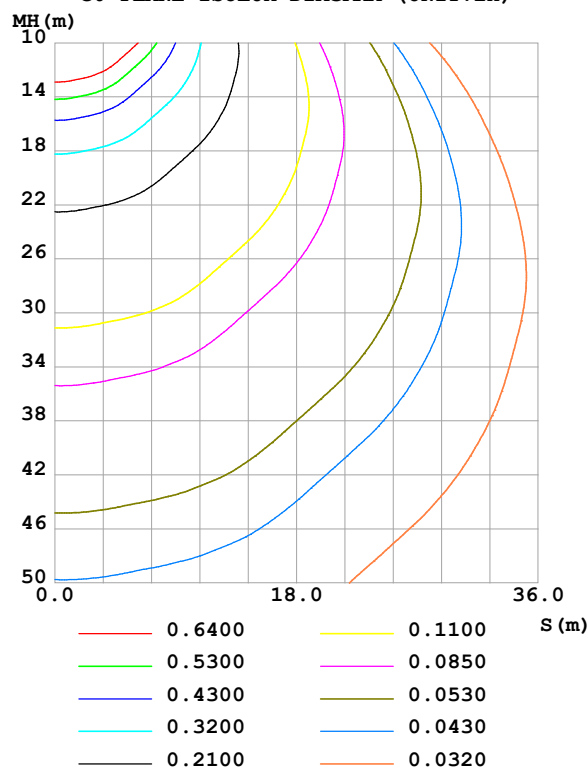
Test:U:24.00V I:0.3947A P:9.473W PF:1.000 Freq:0Hz Lamp Flux:586.436x1 lm		
NAME: SF18-24V-3528-144-2500K-80	TYPE:	WEIGHT:
SPEC.:	DIM.: Length=1m	SERIAL No.:
MFR.: Olym pia lighting	SUR.:	Shielding Angle:

DATA OF LAMP		PHOTOMETRIC DATA				Eff: 61.91 lm/W
MODEL	3528	I _{max} (cd)	106.6	S/MH(C0/180)	1.46	
NOMINAL POWER(W)	10	LOR(%)	100.0	S/MH(C90/270)	1.25	
RATED VOLTAGE(V)	24	TOTAL FLUX(lm)	586.44	η UP,DN(C0-180)	12.9,37.0	
NOMINAL FLUX(lm)	586.436	CIE CLASS	SEMI-D.	η UP,DN(C180-360)	12.9,37.2	
LAMPS INSIDE	1	η up (%)	25.8	CIBSE SHR NOM	1.50	
TEST VOLTAGE(V)		η down (%)	74.2	CIBSE SHR MAX	1.55	

LUMINOUS INTENSITY DISTRIBUTION DIAGRAM



C0 PLANE ISOLUX DIAGRAM (UNIT:lx)



C Range: 0 - 360DEG
C Interval: 30.0DEG
Test Speed: HIGH
Temperature:25.3℃
Operators:
Test Date:2025-02-19

γ Range: 0 - 180DEG
γ Interval: 1.0DEG
Test System:EVERFINE GO-2000B_V1 SYSTEM V2.00.488
Humidity:65.0%
Test Distance:6.360m [K=1.0000]
Remarks:

ZONAL FLUX DIAGRAM

ZONAL FLUX DIAGRAM:

γ	C0	C45	C90	C135	C180	C225	C270	C315	γ	Φ zone	Φ total	%lum,lamp
10	106.2	105.0	104.1	104.8	105.6	105.2	104.5	105.4	0- 10	10.09	10.09	1.72,1.72
20	105.6	102.3	97.77	100.8	103.6	101.5	98.80	103.0	10- 20	29.33	39.42	6.72,6.72
30	103.7	96.55	88.01	94.40	101.4	95.51	89.54	97.49	20- 30	45.67	85.08	14.5,14.5
40	104.7	90.02	75.27	86.93	99.53	88.47	77.28	91.14	30- 40	58.17	143.3	24.4,24.4
50	103.6	81.61	60.73	77.67	96.90	79.60	62.93	82.80	40- 50	65.74	209.0	35.6,35.6
60	95.53	71.82	45.47	67.26	89.05	69.13	47.68	72.84	50- 60	67.61	276.6	47.2,47.2
70	83.94	60.20	30.10	56.05	77.51	57.84	32.12	61.17	60- 70	63.45	340.1	58,58
80	69.07	47.25	15.26	42.80	64.92	44.20	16.86	47.94	70- 80	54.07	394.1	67.2,67.2
90	59.92	35.53	2.661	31.92	54.54	31.80	3.142	35.37	80- 90	40.94	435.1	74.2,74.2
100	61.70	34.85	2.736	33.55	56.42	33.89	3.092	34.98	90-100	36.01	471.1	80.3,80.3
110	55.34	31.78	2.826	32.92	56.24	33.58	3.256	31.05	100-110	34.18	505.2	86.2,86.2
120	50.27	27.06	2.936	28.86	48.61	29.38	3.352	28.10	110-120	29.76	535.0	91.2,91.2
130	40.56	21.51	3.005	22.94	38.41	23.39	3.442	22.58	120-130	22.45	557.5	95.1,95.1
140	30.15	13.67	3.182	17.03	28.71	17.52	3.421	14.43	130-140	14.76	572.2	97.6,97.6
150	20.28	9.071	3.283	11.34	18.72	11.76	3.395	9.098	140-150	8.330	580.5	99,99
160	12.10	5.348	3.456	6.918	10.30	7.055	3.482	5.779	150-160	4.036	584.6	99.7,99.7
170	4.002	4.076	3.638	4.065	3.952	4.052	3.586	4.310	160-170	1.483	586.1	99.9,99.9
180	3.504	3.726	3.704	3.752	3.484	3.699	3.696	3.775	170-180	0.3685	586.4	100,100
DEG	LUMINOUS INTENSITY:cd									UNIT:lm		

Conical surface Flux(90deg): 175.51 lm

%lum = 29.9%

%lamp = 29.9%

Conical surface Flux(130deg): 309.19 lm

%lum = 52.7%

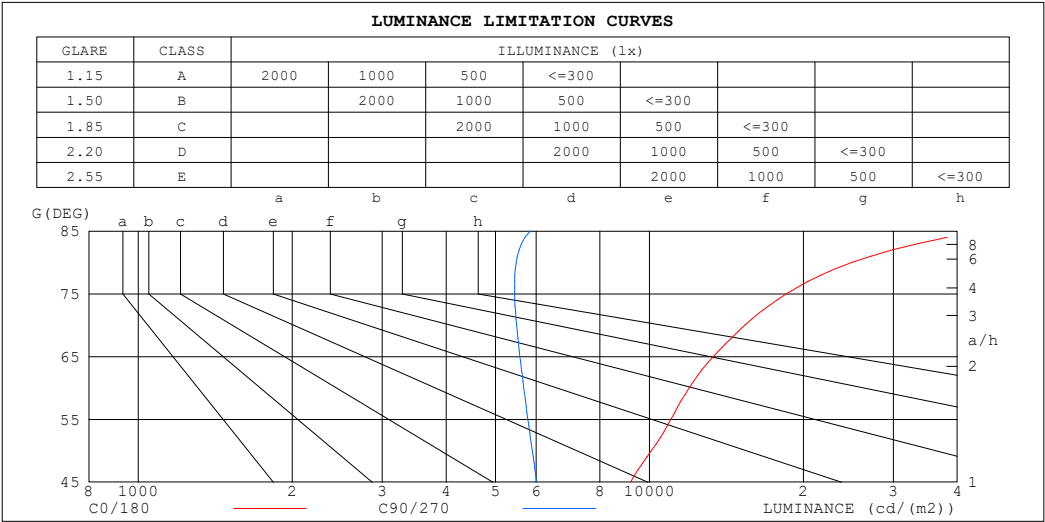
%lamp = 52.7%

C Range: 0 - 360DEG
 C Interval: 30.0DEG
 Test Speed: HIGH
 Temperature:25.3℃
 Operators:
 Test Date:2025-02-19

γ Range: 0 - 180DEG
 γ Interval: 1.0DEG
 Test System:EVERFINE GO-2000B_V1 SYSTEM V2.00.488
 Humidity:65.0%
 Test Distance:6.360m [K=1.0000]
 Remarks:

LUMINANCE LIMITATION CURVES

Test:U:24.00V I:0.3947A P:9.473W PF:1.000 Freq:0Hz Lamp Flux:586.436x1 lm		
NAME: SF18-24V-3528-144-2500K-80	TYPE:	WEIGHT:
SPEC.:	DIM.: Length=1m	SERIAL No.:
MFR.: OLympia lighting	SUR.:	Shielding Angle:



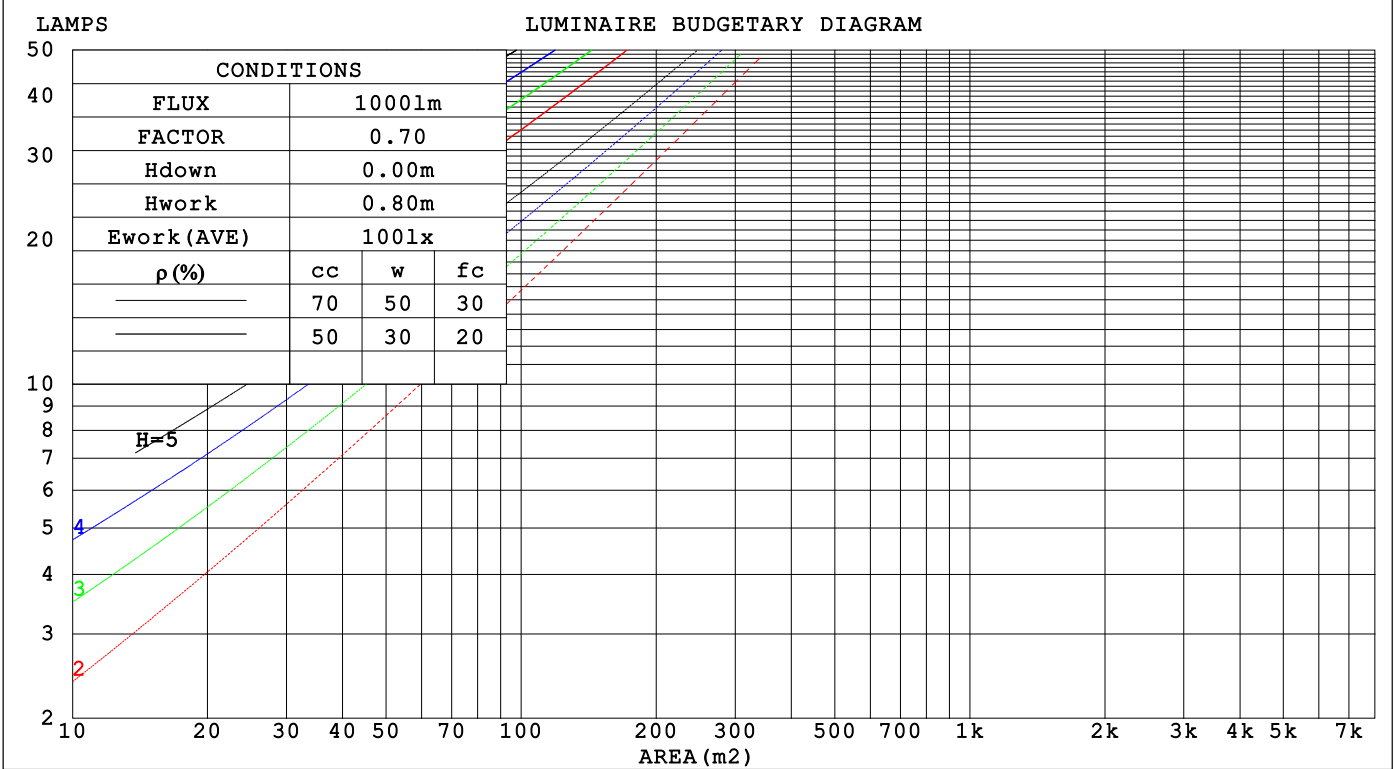
LUMINANCE cd/(m2)		
G (DEG)	C0/180	C90/270
85	44952	5846
80	24898	5486
75	18536	5446
70	15363	5494
65	13336	5579
60	11960	5676
55	11014	5780
50	10087	5898
45	9188	6018

C Range: 0 - 360DEG	γ Range: 0 - 180DEG
C Interval: 30.0DEG	γ Interval: 1.0DEG
Test Speed: HIGH	Test System:EVERFINE GO-2000B_V1 SYSTEM V2.00.488
Temperature:25.3℃	Humidity:65.0%
Operators:	Test Distance:6.360m [K=1.0000]
Test Date:2025-02-19	Remarks:

CU AND LUMINAIRE BUDGETARY ESTIMATE DIAGRAM

Test:U:24.00V I:0.3947A P:9.473W PF:1.000 Freq:0Hz		
Lamp Flux:586.436x1 lm		
NAME: SF18-24V-3528-144-2500K-80	TYPE:	WEIGHT:
SPEC.:	DIM.: Length=1m	SERIAL No.:
MFR.: OLYmpia lighting	SUR.:	Shielding Angle:

pcc	80%			70%			50%			30%			10%			0
pw	50%	30%	10%	50%	30%	10%	50%	30%	10%	50%	30%	10%	50%	30%	10%	0
pfc	20%			20%			20%			20%			20%			0
RCR	RCR:Room Cavity Ratio															



C Range: 0 - 360DEG
C Interval: 30.0DEG
Test Speed: HIGH
Temperature:25.3℃
Operators:
Test Date:2025-02-19

γ Range: 0 - 180DEG
γ Interval: 1.0DEG
Test System:EVERFINE GO-2000B_V1 SYSTEM V2.00.488
Humidity:65.0%
Test Distance:6.360m [K=1.0000]
Remarks:

WEC AND CCEC

Test:U:24.00V I:0.3947A P:9.473W PF:1.000 Freq:0Hz Lamp Flux:586.436x1 lm		
NAME: SF18-24V-3528-144-2500K-80	TYPE:	WEIGHT:
SPEC.:	DIM.: Length=1m	SERIAL No.:
MFR.: OLympia lighting	SUR.:	Shielding Angle:

pcc	80%			70%			50%			30%			10%			0														
pw	50%	30%	10%	50%	30%	10%	50%	30%	10%	50%	30%	10%	50%	30%	10%	0														
pfc	20%			20%			20%			20%			20%			0														
RCR	RCR:Room Cavity Ratio															Wall Exitance Coefficients(WEC)														
0.0																														
1.0	.381	.216	.069	.366	.208	.066	.337	.193	.062	.311	.180	.058	.287	.167	.054															
2.0	.330	.181	.055	.316	.174	.054	.291	.162	.050	.267	.150	.047	.245	.139	.044															
3.0	.293	.156	.047	.281	.151	.045	.258	.140	.042	.236	.129	.040	.216	.120	.037															
4.0	.264	.137	.040	.253	.132	.039	.232	.123	.037	.212	.114	.034	.194	.105	.032															
5.0	.240	.122	.035	.230	.118	.034	.211	.110	.032	.193	.102	.030	.176	.094	.028															
6.0	.220	.110	.032	.211	.106	.031	.193	.099	.029	.176	.092	.027	.161	.085	.025															
7.0	.203	.100	.028	.194	.097	.028	.178	.090	.026	.163	.083	.024	.149	.077	.023															
8.0	.188	.092	.026	.180	.089	.025	.165	.083	.024	.151	.077	.022	.138	.071	.021															
9.0	.175	.085	.024	.168	.082	.023	.154	.076	.022	.141	.071	.020	.129	.065	.019															
10.0	.164	.079	.022	.157	.076	.021	.144	.071	.020	.132	.066	.019	.121	.061	.017															

pcc	80%			70%			50%			30%			10%			0
pw	50%	30%	10%	50%	30%	10%	50%	30%	10%	50%	30%	10%	50%	30%	10%	0
pfc	20%			20%			20%			20%			20%			0
RCR	RCR:Room Cavity Ratio						Ceiling Cavity Exitance Coefficients (CCEC)									
0.0	.387	.387	.387	.331	.331	.331	.226	.226	.226	.130	.130	.130	.041	.041	.041	
1.0	.383	.354	.327	.328	.304	.281	.224	.209	.195	.129	.121	.113	.041	.039	.037	
2.0	.377	.331	.293	.323	.285	.253	.221	.197	.177	.128	.115	.104	.041	.037	.034	
3.0	.370	.315	.272	.317	.272	.236	.218	.189	.165	.126	.110	.097	.040	.036	.032	
4.0	.362	.303	.258	.311	.262	.224	.214	.182	.158	.124	.107	.093	.040	.035	.031	
5.0	.355	.293	.248	.305	.254	.216	.210	.177	.152	.122	.104	.090	.039	.034	.030	
6.0	.347	.285	.241	.299	.247	.210	.206	.173	.149	.119	.102	.088	.039	.033	.029	
7.0	.340	.279	.236	.293	.242	.206	.202	.170	.146	.118	.100	.087	.038	.033	.029	
8.0	.334	.274	.232	.287	.237	.202	.199	.167	.144	.116	.098	.086	.037	.032	.028	
9.0	.328	.269	.229	.282	.233	.200	.196	.164	.142	.114	.097	.085	.037	.032	.028	
10.0	.322	.265	.227	.277	.230	.198	.192	.162	.141	.112	.096	.084	.036	.031	.028	

C Range: 0 - 360DEG
C Interval: 30.0DEG
Test Speed: HIGH
Temperature:25.3℃
Operators:
Test Date:2025-02-19

γ Range: 0 - 180DEG
γ Interval: 1.0DEG
Test System:EVERFINE GO-2000B_V1 SYSTEM V2.00.488
Humidity:65.0%
Test Distance:6.360m [K=1.0000]
Remarks:

UGR(Unified Glare Rating) Table

Test:U:24.00V I:0.3947A P:9.473W PF:1.000 Freq:0Hz Lamp Flux:586.436x1 lm											
NAME: SF18-24V-3528-144-2500K-80						TYPE:		WEIGHT:			
SPEC.:						DIM.: Length=1m		SERIAL No.:			
MFR.: OLympia lighting						SUR.:		Shielding Angle:			
ceiling/cavity	0.7	0.7	0.5	0.5	0.3	0.7	0.7	0.5	0.5	0.3	
walls	0.5	0.3	0.5	0.3	0.3	0.5	0.3	0.5	0.3	0.3	
working plane	0.2	0.2	0.2	0.2	0.2	0.2	0.2	0.2	0.2	0.2	
Room dimensions		Viewed crosswise					Viewed endwise				
x = 2H y = 2H	2H	21.0	22.3	21.6	22.9	23.6	17.8	19.1	18.4	19.7	20.5
	3H	23.8	25.0	24.4	25.6	26.3	19.5	20.7	20.1	21.3	22.1
	4H	25.3	26.4	25.9	27.0	27.8	20.3	21.4	20.9	22.0	22.8
	6H	26.8	27.9	27.5	28.6	29.4	20.9	21.9	21.6	22.6	23.4
	8H	27.7	28.7	28.4	29.4	30.2	21.1	22.2	21.8	22.8	23.7
	12H	28.7	29.7	29.4	30.4	31.2	21.3	22.3	22.0	23.0	23.8
4H	2H	21.5	22.6	22.1	23.3	24.0	19.2	20.4	19.9	21.0	21.8
	3H	24.5	25.5	25.2	26.2	27.0	21.1	22.1	21.8	22.8	23.6
	4H	26.2	27.1	26.9	27.8	28.7	22.0	22.9	22.7	23.6	24.5
	6H	28.0	28.8	28.7	29.5	30.4	22.8	23.6	23.6	24.4	25.3
	8H	29.0	29.7	29.7	30.5	31.4	23.2	23.9	23.9	24.7	25.6
	12H	30.1	30.8	30.9	31.6	32.5	23.4	24.1	24.2	24.9	25.8
8H	4H	26.5	27.2	27.2	28.0	28.9	23.2	24.0	24.0	24.7	25.6
	6H	28.6	29.2	29.4	30.0	30.9	24.4	25.0	25.1	25.8	26.7
	8H	29.8	30.3	30.6	31.1	32.1	24.9	25.5	25.7	26.3	27.2
	12H	31.2	31.7	32.0	32.5	33.4	25.4	25.9	26.2	26.7	27.6
12H	4H	26.5	27.2	27.2	27.9	28.9	23.6	24.3	24.4	25.1	26.0
	6H	28.7	29.2	29.5	30.0	31.0	25.0	25.5	25.8	26.3	27.3
	8H	30.0	30.5	30.8	31.3	32.3	25.7	26.1	26.5	27.0	27.9
Variations with the observer position at spacings(CIE Pub.117):											
S = 1.0H		+ 0.1 / - 0.1					+ 0.1 / - 0.1				
1.5H		+ 0.2 / - 0.2					+ 0.2 / - 0.3				
2.0H		+ 0.2 / - 0.3					+ 0.2 / - 0.4				

CIE Pub.117, 586.4 lm Total Lamp Luminous Flux Correct (8log(F/F0) = -1.9)
Area: 0.016 m2

C Range: 0 - 360DEG
C Interval: 30.0DEG
Test Speed: HIGH
Temperature:25.3℃
Operators:
Test Date:2025-02-19

γ Range: 0 - 180DEG
γ Interval: 1.0DEG
Test System:EVERFINE GO-2000B_V1 SYSTEM V2.00.488
Humidity:65.0%
Test Distance:6.360m [K=1.0000]
Remarks:

UTILIZATION FACTORS TABLE

Test:U:24.00V I:0.3947A P:9.473W PF:1.000 Freq:0Hz Lamp Flux:586.436x1 lm		
NAME: SF18-24V-3528-144-2500K-80	TYPE:	WEIGHT:
SPEC.:	DIM.: Length=1m	SERIAL No.:
MFR.: OLympia lighting	SUR.:	Shielding Angle:

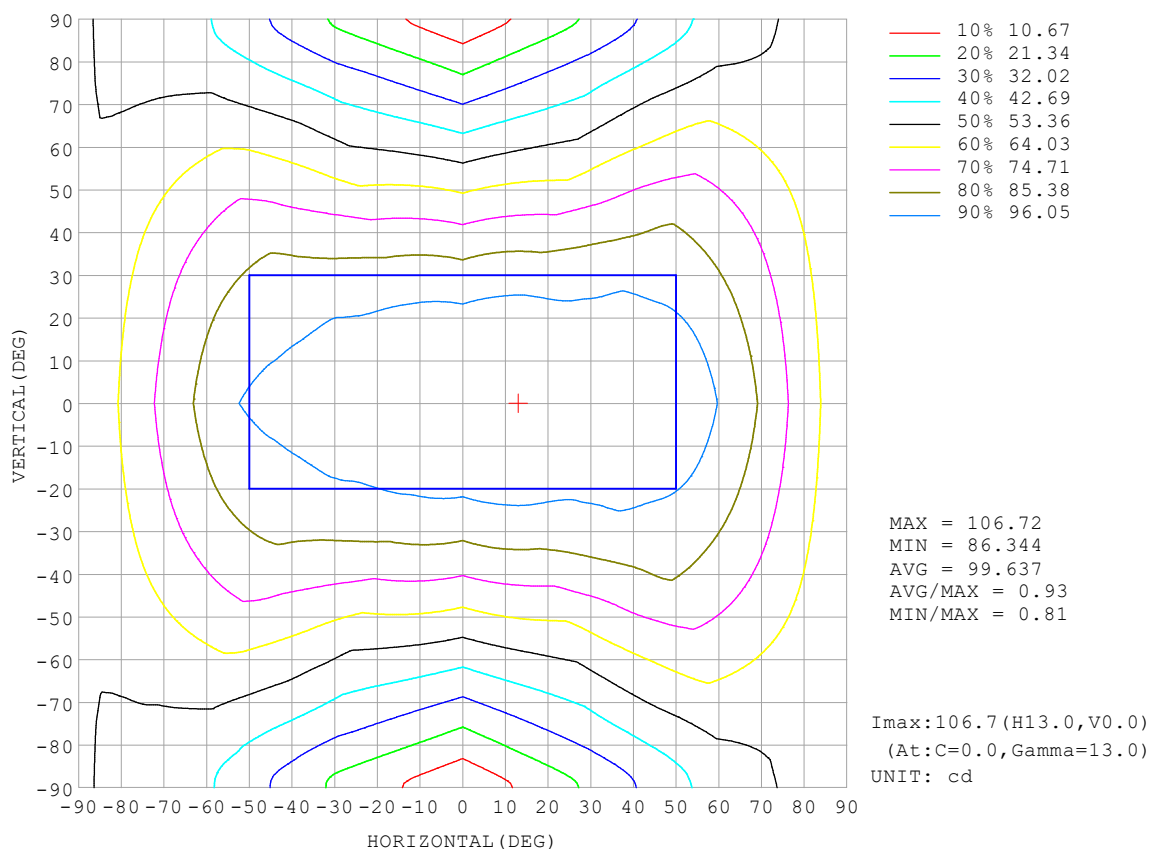
REFLECTANCE										
Ceiling	0.8	0.8	0.8	0.7	0.7	0.7	0.5	0.5	0.5	0
Walls	0.7	0.5	0.3	0.7	0.5	0.3	0.7	0.5	0.3	0
Working plane	0.2	0.2	0.2	0.2	0.2	0.2	0.2	0.2	0.2	0
ROOM INDEX	UTILIZATION FACTORS (PERCENT) $k(RI) \times RCR = 5$									
$k = 0.60$	45	33	25	44	32	25	41	31	24	18
0.80	54	41	33	52	40	32	49	38	31	23
1.00	62	49	40	60	47	39	55	47	38	28
1.25	69	56	47	66	54	46	61	51	44	33
1.50	74	61	53	71	59	51	65	56	49	37
2.00	81	70	62	78	67	60	71	63	56	43
2.50	86	76	67	82	73	65	75	67	61	46
3.00	90	80	73	86	77	70	78	71	65	50
4.00	95	87	80	90	83	77	82	76	71	54
5.00	98	91	85	93	87	81	84	79	75	57
ROOM INDEX	UF (total)									Direct
According to DIN EN 13032-2 2004			Suspended					SHRNOM = 1.25		

C Range: 0 - 360DEG
 C Interval: 30.0DEG
 Test Speed: HIGH
 Temperature: 25.3 °C
 Operators:
 Test Date: 2025-02-19

γ Range: 0 - 180DEG
 γ Interval: 1.0DEG
 Test System: EVERFINE GO-2000B_V1 SYSTEM V2.00.488
 Humidity: 65.0%
 Test Distance: 6.360m [K=1.0000]
 Remarks:

ISOCANDELA DIAGRAM

Test:U:24.00V I:0.3947A P:9.473W PF:1.000 Freq:0Hz Lamp Flux:586.436x1 lm		
NAME: SF18-24V-3528-144-2500K-80	TYPE:	WEIGHT:
SPEC.:	DIM.: Length=1m	SERIAL No.:
MFR.: OLympia lighting	SUR.:	Shielding Angle:

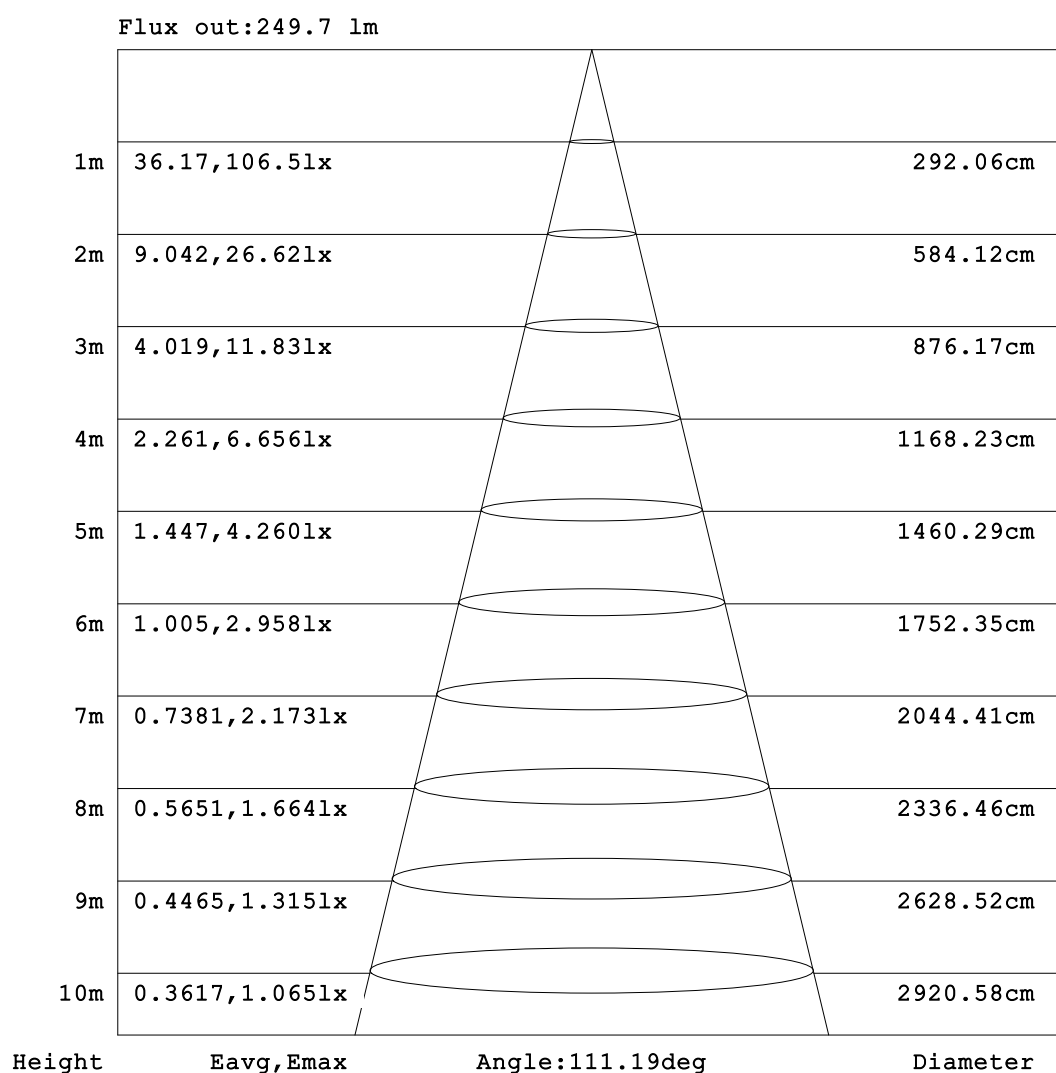


C Range: 0 - 360DEG
C Interval: 30.0DEG
Test Speed: HIGH
Temperature:25.3℃
Operators:
Test Date:2025-02-19

γ Range: 0 - 180DEG
γ Interval: 1.0DEG
Test System:EVERFINE GO-2000B_V1 SYSTEM V2.00.488
Humidity:65.0%
Test Distance:6.360m [K=1.0000]
Remarks:

AAI Figure

Test:U:24.00V I:0.3947A P:9.473W PF:1.000 Freq:0Hz Lamp Flux:586.436lx 1m		
NAME: SF18-24V-3528-144-2500K-80	TYPE:	WEIGHT:
SPEC.:	DIM.: Length=1m	SERIAL No.:
MFR.: OLympia lighting	SUR.:	Shielding Angle:



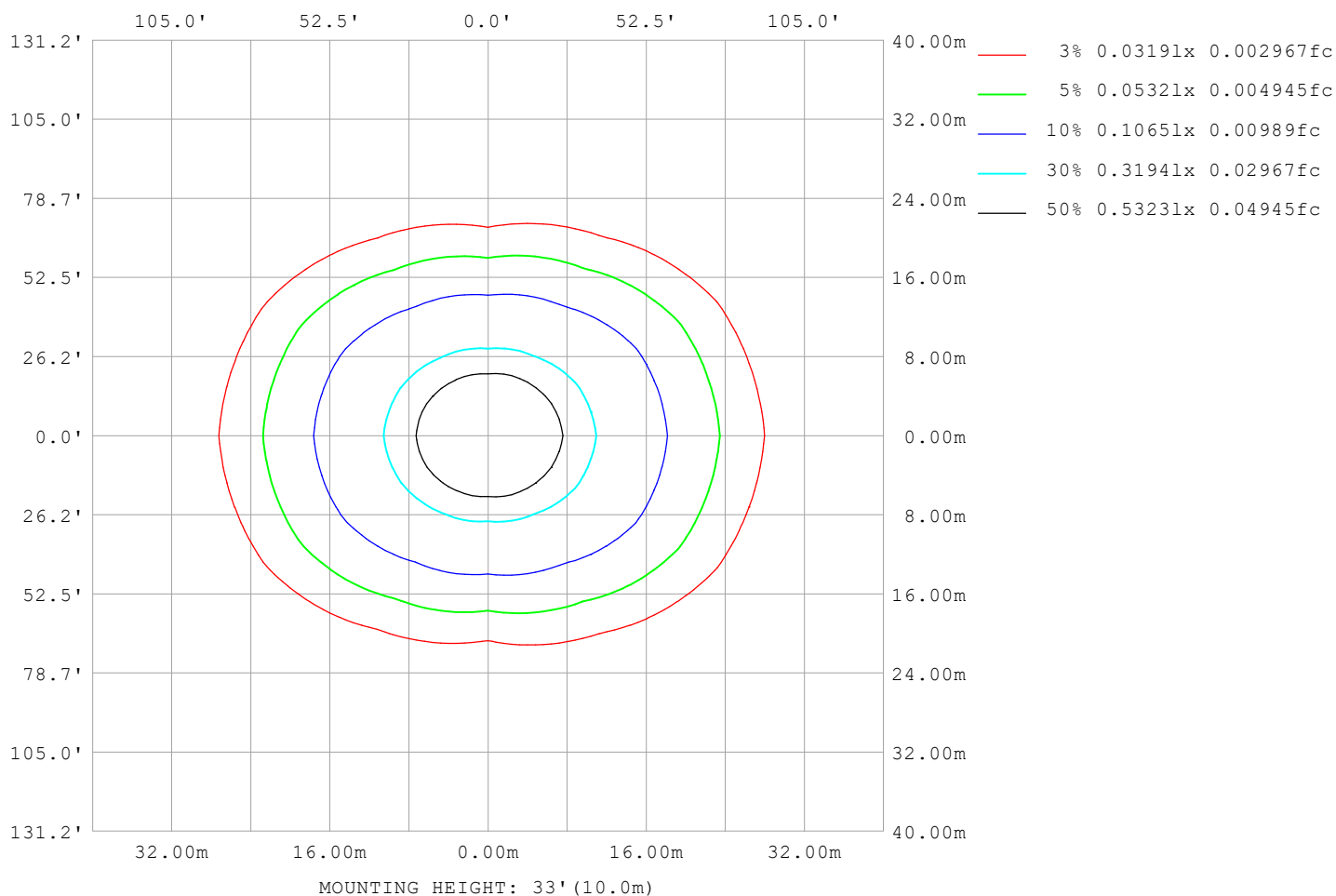
Note:The Curves indicate the illuminated area and the average illumination when the luminaire is at different distance.

C Range: 0 - 360DEG
C Interval: 30.0DEG
Test Speed: HIGH
Temperature:25.3℃
Operators:
Test Date:2025-02-19

γ Range: 0 - 180DEG
γ Interval: 1.0DEG
Test System:EVERFINE GO-2000B_V1 SYSTEM V2.00.488
Humidity:65.0%
Test Distance:6.360m [K=1.0000]
Remarks:

ISOLUX DIAGRAM

Test:U:24.00V I:0.3947A P:9.473W PF:1.000 Freq:0Hz Lamp Flux:586.436x1 lm		
NAME: SF18-24V-3528-144-2500K-80	TYPE:	WEIGHT:
SPEC.:	DIM.: Length=1m	SERIAL No.:
MFR.: OLympia lighting	SUR.:	Shielding Angle:



C Range: 0 - 360DEG
C Interval: 30.0DEG
Test Speed: HIGH
Temperature: 25.3°C
Operators:
Test Date: 2025-02-19

γ Range: 0 - 180DEG
γ Interval: 1.0DEG
Test System: EVERFINE GO-2000B_V1 SYSTEM V2.00.488
Humidity: 65.0%
Test Distance: 6.360m [K=1.0000]
Remarks:

LED Avg.L Report

Test:U:24.00V I:0.3947A P:9.473W PF:1.000 Freq:0Hz Lamp Flux:586.436x1 lm		
NAME: SF18-24V-3528-144-2500K-80	TYPE:	WEIGHT:
SPEC.:	DIM.: Length=1m	SERIAL No.:
MFR.: OLympia lighting	SUR.:	Shielding Angle:

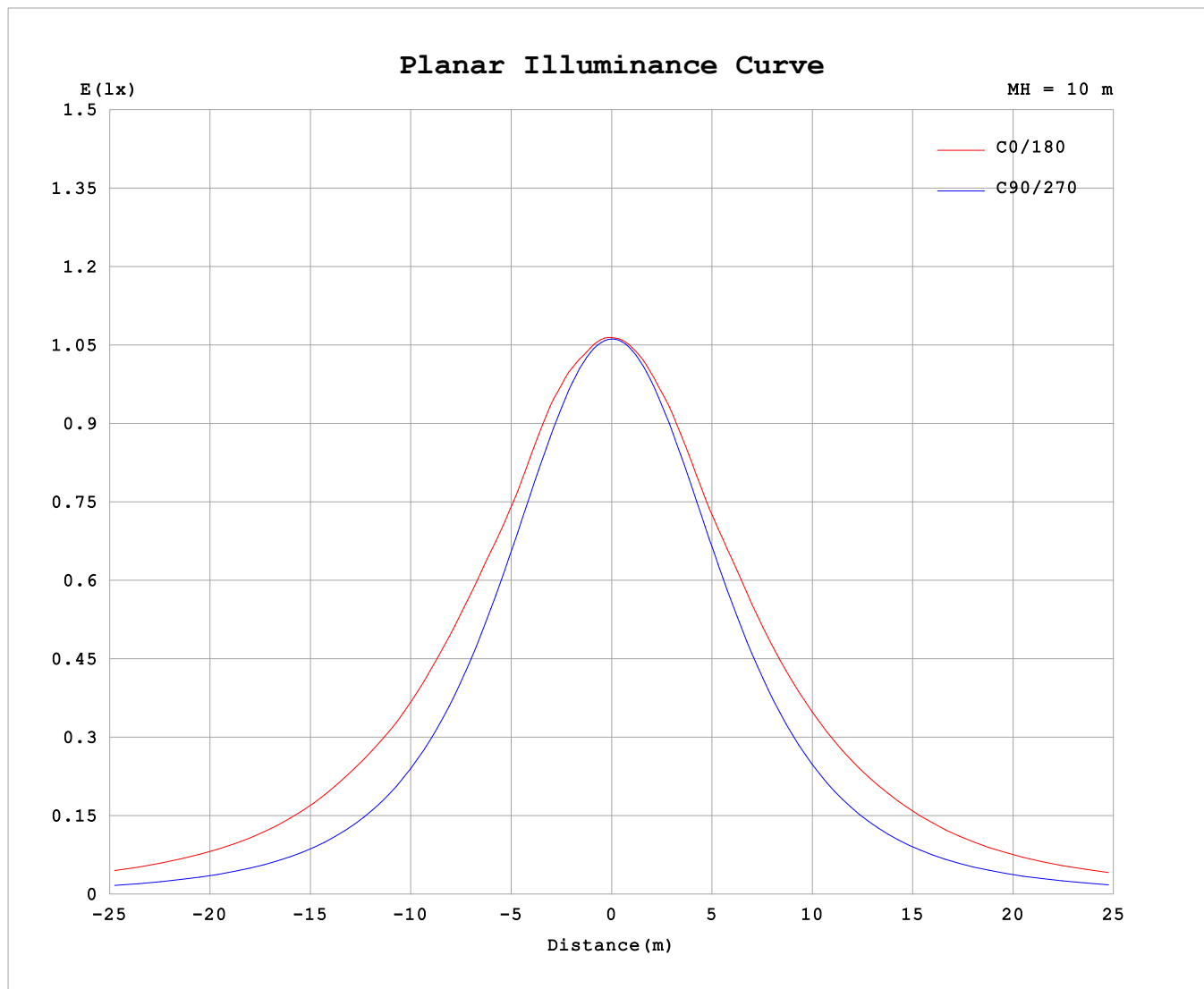
AvgL	cd/m2
L_0~180 (65) av	12795
L_0~180 (75) av	17848
L_0~180 (85) av	43236
L_90~270 (65) av	5745
L_90~270 (75) av	5673
L_90~270 (85) av	6338
L_45 (65) av	9606
L_45 (75) av	12783
L_45 (85) av	28035

Standard: GB/T 29293-2012

C Range: 0 - 360DEG
C Interval: 30.0DEG
Test Speed: HIGH
Temperature:25.3℃
Operators:
Test Date:2025-02-19

γ Range: 0 - 180DEG
γ Interval: 1.0DEG
Test System:EVERFINE GO-2000B_V1 SYSTEM V2.00.488
Humidity:65.0%
Test Distance:6.360m [K=1.0000]
Remarks:

Planar Illuminance Curve



C Range: 0 - 360DEG
C Interval: 30.0DEG
Test Speed: HIGH
Temperature: 25.3 °C
Operators:
Test Date: 2025-02-19

γ Range: 0 - 180DEG
 γ Interval: 1.0DEG
Test System: EVERFINE GO-2000B_V1 SYSTEM V2.00.488
Humidity: 65.0%
Test Distance: 6.360m [K=1.0000]
Remarks:

LUMINOUS DISTRIBUTION INTENSITY DATA

Test:U:24.00V I:0.3947A P:9.473W PF:1.000 Freq:0Hz Lamp Flux:586.436x1 lm																	
NAME: SF18-24V-3528-144-2500K-80									TYPE:						WEIGHT:		
SPEC.:									DIM.: Length=1m						SERIAL No.:		
MFR.: OLYMPIA lighting									SUR.:						Shielding Angle:		

Table--1

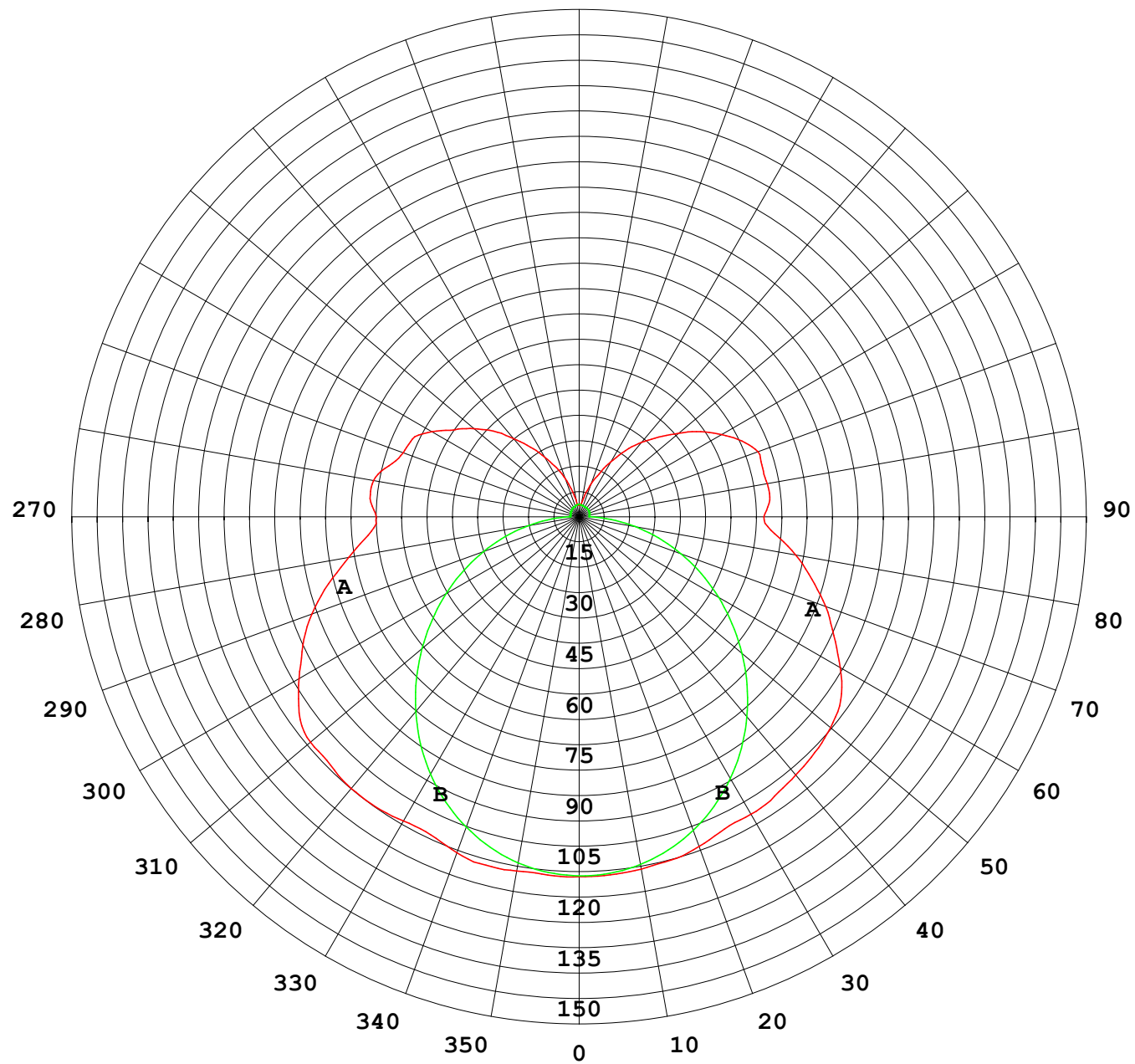
UNIT: cd

C (DEG) γ (DEG)	0	30	60	90	120	150	180	210	240	270	300	330						
0	106	106	106	106	106	106	106	106	106	106	106	106						
5	106	106	106	106	106	106	106	106	106	106	106	106						
10	106	106	105	104	104	105	106	105	105	105	105	106						
15	107	105	102	101	102	104	105	104	103	102	103	106						
20	106	105	100	97.8	99.2	102	104	103	100	98.8	101	105						
25	104	102	97.5	93.3	95.7	99.9	102	100	97.0	94.6	98.5	102						
30	104	99.3	93.8	88.0	91.7	97.1	101	97.8	93.2	89.5	95.1	99.8						
35	105	98.3	88.7	81.9	86.8	95.4	101	96.4	88.5	83.8	90.3	98.9						
40	105	97.0	83.0	75.3	81.2	92.6	99.5	93.7	83.2	77.3	84.6	97.7						
45	104	95.3	77.0	68.2	75.0	89.7	98.4	91.0	77.2	70.3	78.7	95.9						
50	104	92.4	70.8	60.7	68.5	86.8	96.9	88.2	70.9	62.9	72.5	93.1						
55	101	89.3	64.0	53.1	61.4	83.6	94.4	85.1	63.8	55.3	65.6	89.9						
60	95.5	85.8	57.8	45.5	55.1	79.4	89.1	80.7	57.6	47.7	59.3	86.4						
65	90.0	80.1	52.2	37.8	49.4	74.2	83.0	75.4	51.9	39.9	53.6	80.8						
70	83.9	73.8	46.5	30.1	43.7	68.4	77.5	69.5	46.1	32.1	47.8	74.5						
75	76.6	67.3	40.9	22.6	38.1	61.1	71.2	62.0	40.3	24.4	42.0	68.0						
80	69.1	59.5	34.9	15.3	31.5	54.1	64.9	54.9	33.5	16.9	35.8	60.0						
85	62.6	52.2	28.2	8.16	24.4	48.2	58.0	48.0	26.2	9.51	29.0	52.5						
90	59.9	47.8	23.3	2.66	19.7	44.1	54.5	43.5	20.1	3.14	23.2	47.5						
95	62.0	49.0	23.4	2.72	19.7	45.3	56.5	44.7	20.3	3.00	23.1	48.6						
100	61.7	50.6	19.1	2.74	20.1	47.0	56.4	46.9	20.9	3.09	19.8	50.1						
105	58.2	46.9	17.6	2.77	20.2	47.8	56.1	48.3	20.7	3.18	17.8	47.1						
110	55.3	45.9	17.7	2.83	20.2	45.7	56.2	46.5	20.7	3.26	18.3	43.8						
115	54.4	42.3	18.1	2.89	20.0	42.9	53.0	43.2	20.8	3.31	18.5	43.0						
120	50.3	38.0	16.1	2.94	18.6	39.1	48.6	39.3	19.4	3.35	17.2	39.0						
125	44.8	35.4	13.7	2.95	16.8	35.0	43.9	35.3	17.6	3.42	14.8	35.5						
130	40.6	32.2	10.8	3.01	14.6	31.3	38.4	31.5	15.2	3.44	13.0	32.1						
135	35.8	25.5	7.47	3.10	12.6	27.3	33.3	27.6	13.2	3.45	10.4	26.9						
140	30.2	20.9	6.43	3.18	10.7	23.3	28.7	23.7	11.4	3.42	8.39	20.5						
145	25.2	16.0	6.63	3.25	9.22	18.9	23.9	19.3	9.70	3.41	7.22	14.3						
150	20.3	12.5	5.64	3.28	7.46	15.2	18.7	15.6	7.93	3.40	5.96	12.2						
155	16.1	9.53	5.00	3.35	5.88	12.4	14.0	12.6	6.15	3.43	5.11	9.29						
160	12.1	6.00	4.70	3.46	4.65	9.18	10.3	9.32	4.79	3.48	4.68	6.87						
165	7.79	4.08	4.34	3.56	4.03	6.02	6.67	6.03	4.00	3.53	4.31	5.17						
170	4.00	4.06	4.09	3.64	3.82	4.31	3.95	4.32	3.78	3.59	4.08	4.53						
175	3.53	3.99	4.07	3.69	3.65	3.80	3.55	3.82	3.62	3.65	4.05	4.13						
180	3.50	3.70	3.75	3.70	3.74	3.77	3.48	3.70	3.70	3.70	3.75	3.80						

C Range: 0 - 360DEG
C Interval: 30.0DEG
Test Speed: HIGH
Temperature:25.3℃
Operators:
Test Date:2025-02-19

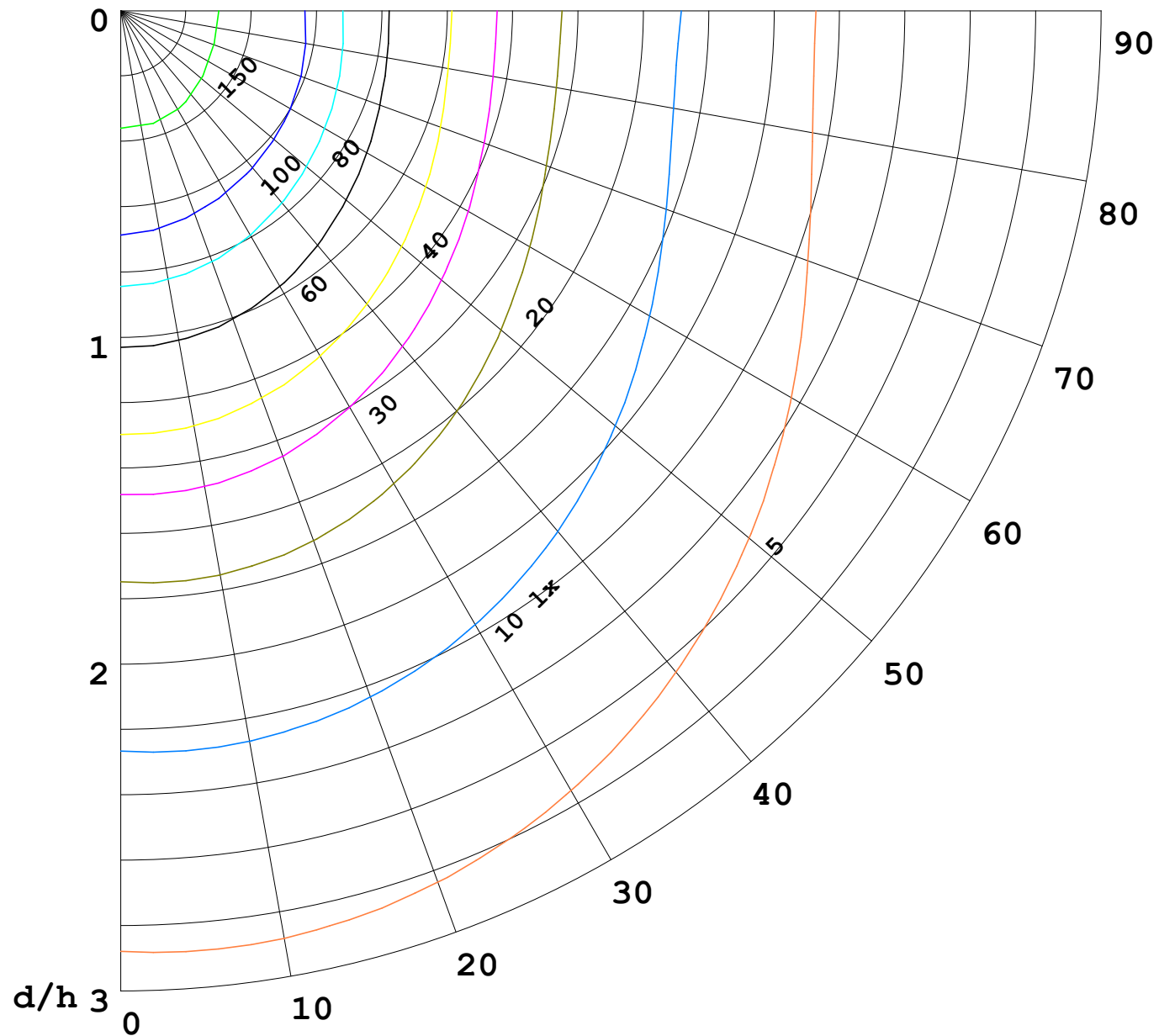
γ Range: 0 - 180DEG
γ Interval: 1.0DEG
Test System:EVERFINE GO-2000B_V1 SYSTEM V2.00.488
Humidity:65.0%
Test Distance:6.360m [K=1.0000]
Remarks:

I (cd)



1000 lm

$\kappa = 1$



F = 1000 lm
 K = 0.7
 Hcc = 0.8 m
 Hfc = 0.0 m
 Eave = 100 lx

	Pcc	Pw	Pfc
————	70	50	30
————	50	30	20

