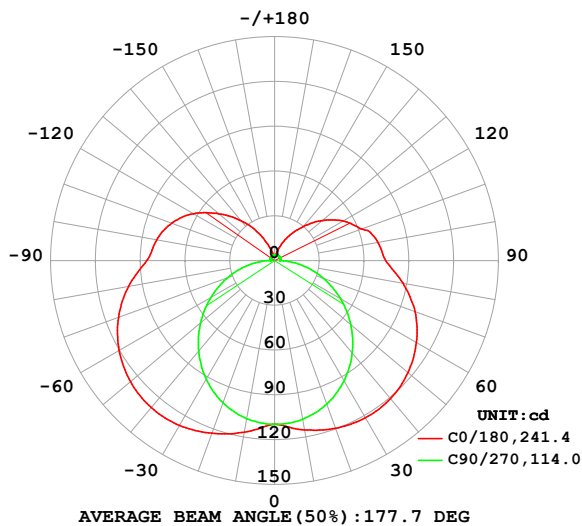


LUMINAIRE PHOTOMETRIC TEST REPORT

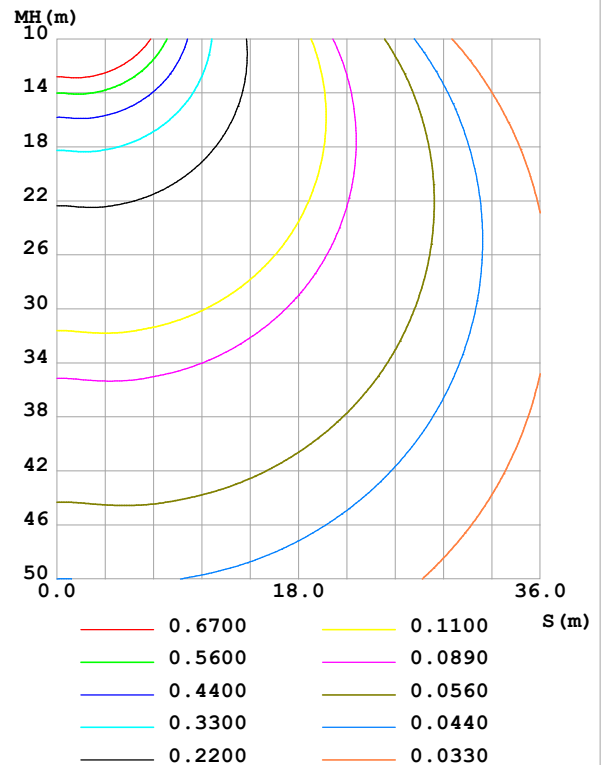
Test:U:24.00V I:0.4333A P:10.40W PF:1.000 Freq:0Hz Lamp Flux:734.237x1 lm		
NAME: SF18-24V-3528-144-5000-80	TYPE:	WEIGHT:
SPEC.:	DIM.: Length=1m	SERIAL No.:
MFR.:	SUR.:	Shielding Angle:

DATA OF LAMP		PHOTOMETRIC DATA Eff: 70.61 lm/W			
MODEL		I _{max} (cd)	128.7	S/MH(C0/180)	1.75
NOMINAL POWER(W)		LOR(%)	100.0	S/MH(C90/270)	1.24
RATED VOLTAGE(V)		TOTAL FLUX(lm)	734.24	η UP,DN(C0-180)	12.9,36.9
NOMINAL FLUX(lm)	734.237	CIE CLASS	SEMI-D.	η UP,DN(C180-360)	13.1,37.0
LAMPS INSIDE	1	η up (%)	26.0	CIBSE SHR NOM	1.50
TEST VOLTAGE(V)		η down (%)	74.0	CIBSE SHR MAX	1.55

LUMINOUS INTENSITY DISTRIBUTION DIAGRAM



C0 PLANE ISOLUX DIAGRAM (UNIT:lx)



C Range: 0 - 360DEG
C Interval: 22.5DEG
Test Speed: HIGH
Temperature:25.3℃
Operators:Cloud
Test Date:2024-10-12

γ Range: 0 - 180DEG
γ Interval: 1.0DEG
Test System:EVERFINE GO-2000B_V1 SYSTEM V2.00.488
Humidity:65.0%
Test Distance:6.360m [K=1.0000]
Remarks:

ZONAL FLUX DIAGRAM

ZONAL FLUX DIAGRAM:

γ	C0	C45	C90	C135	C180	C225	C270	C315	γ	Φ zone	Φ total	%lum, lamp
10	115.2	112.6	107.9	113.9	116.7	113.5	107.5	112.1	0- 10	10.64	10.64	1.45,1.45
20	119.5	113.6	102.3	116.1	123.1	115.5	101.4	112.6	10- 20	32.07	42.71	5.82,5.82
30	121.6	111.7	93.05	115.6	127.5	114.5	91.71	110.4	20- 30	52.04	94.75	12.9,12.9
40	120.8	107.1	80.92	112.1	128.6	110.9	79.20	105.4	30- 40	68.40	163.2	22.2,22.2
50	116.7	99.69	66.61	105.6	126.1	104.3	64.73	97.90	40- 50	79.37	242.5	33,33
60	109.7	89.66	50.97	96.16	120.3	95.17	49.22	88.16	50- 60	83.94	326.5	44.5,44.5
70	100.3	77.84	34.83	84.38	111.3	83.96	33.42	76.37	60- 70	81.98	408.5	55.6,55.6
80	87.26	64.51	18.81	71.05	99.27	71.05	17.82	63.25	70- 80	73.84	482.3	65.7,65.7
90	74.49	51.07	3.675	57.34	85.74	57.71	3.063	50.28	80- 90	60.88	543.2	74,74
100	70.33	48.09	3.781	53.96	80.28	54.38	2.989	47.48	90-100	52.02	595.2	81.1,81.1
110	62.18	39.15	4.009	48.73	73.42	49.13	3.114	34.12	100-110	45.65	640.8	87.3,87.3
120	53.17	32.51	4.050	39.69	62.93	39.90	3.281	29.76	110-120	36.42	677.3	92.2,92.2
130	41.96	22.85	4.079	29.99	48.98	30.03	3.420	21.51	120-130	26.16	703.4	95.8,95.8
140	29.79	14.62	4.079	19.99	34.96	20.03	3.596	14.35	130-140	16.65	720.1	98.1,98.1
150	19.02	8.693	4.070	11.19	21.04	11.14	3.712	8.288	140-150	8.772	728.8	99.3,99.3
160	9.267	4.766	4.050	4.771	9.271	4.790	3.857	4.601	150-160	3.707	732.6	99.8,99.8
170	4.019	4.092	4.024	4.098	3.952	4.020	3.969	4.118	160-170	1.298	733.9	99.9,99.9
180	4.047	4.086	4.015	4.127	4.050	4.083	4.007	4.127	170-180	0.3869	734.2	100,100
DEG	LUMINOUS INTENSITY:cd									UNIT:lm		

Conical surface Flux(90deg): 201.86 lm

%lum = 27.5%

%lamp = 27.5%

Conical surface Flux(130deg): 368.11 lm

%lum = 50.1%

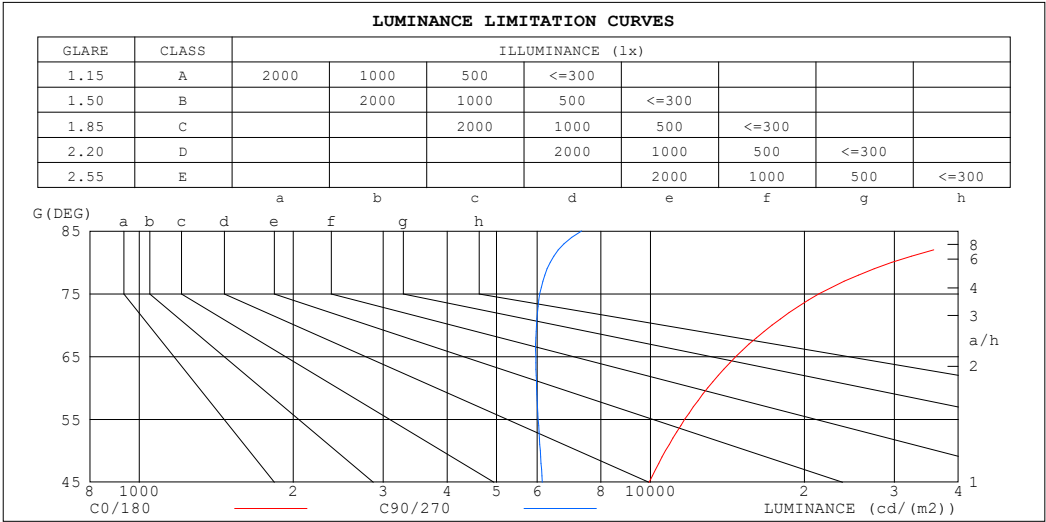
%lamp = 50.1%

C Range: 0 - 360DEG
C Interval: 22.5DEG
Test Speed: HIGH
Temperature:25.3℃
Operators:Cloud
Test Date:2024-10-12

γ Range: 0 - 180DEG
 γ Interval: 1.0DEG
Test System:EVERFINE GO-2000B_V1 SYSTEM V2.00.488
Humidity:65.0%
Test Distance:6.360m [K=1.0000]
Remarks:

LUMINANCE LIMITATION CURVES

Test:U:24.00V I:0.4333A P:10.40W PF:1.000 Freq:0Hz Lamp Flux:734.237x1 lm		
NAME: SF18-24V-3528-144-5000-80	TYPE:	WEIGHT:
SPEC.:	DIM.: Length=1m	SERIAL No.:
MFR.:	SUR.:	Shielding Angle:



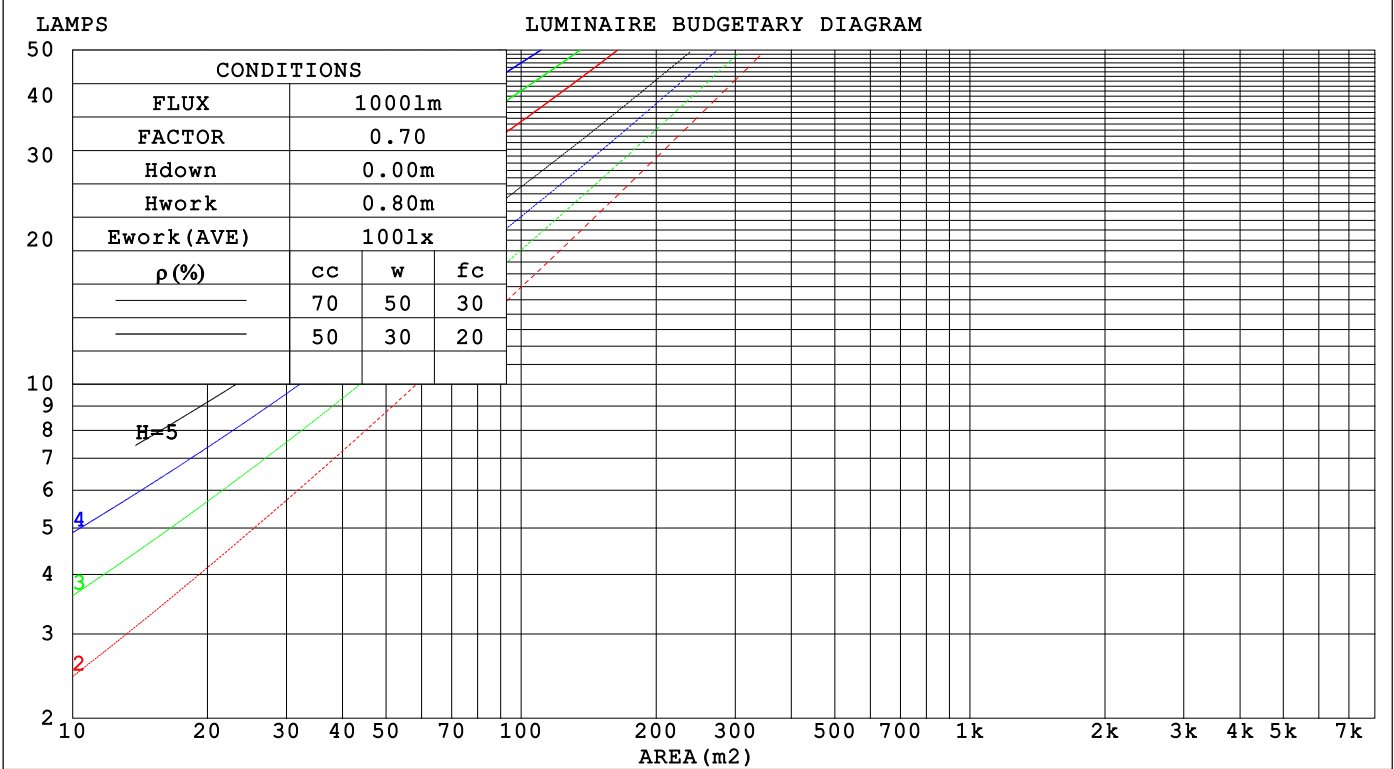
LUMINANCE cd/(m2)		
G (DEG)	C0/180	C90/270
85	54255	7334
80	29637	6363
75	21391	6075
70	17298	5980
65	14686	5965
60	12938	5987
55	11675	6029
50	10705	6086
45	9935	6144

C Range: 0 - 360DEG	γ Range: 0 - 180DEG
C Interval: 22.5DEG	γ Interval: 1.0DEG
Test Speed: HIGH	Test System:EVERFINE GO-2000B_V1 SYSTEM V2.00.488
Temperature:25.3℃	Humidity:65.0%
Operators:Cloud	Test Distance:6.360m [K=1.0000]
Test Date:2024-10-12	Remarks:

CU AND LUMINAIRE BUDGETARY ESTIMATE DIAGRAM

Test:U:24.00V I:0.4333A P:10.40W PF:1.000 Freq:0Hz		
Lamp Flux:734.237x1 lm		
NAME: SF18-24V-3528-144-5000-80	TYPE:	WEIGHT:
SPEC.:	DIM.: Length=1m	SERIAL No.:
MFR.:	SUR.:	Shielding Angle:

pcc	80%			70%			50%			30%			10%			0
pw	50%	30%	10%	50%	30%	10%	50%	30%	10%	50%	30%	10%	50%	30%	10%	0
pfc	20%			20%			20%			20%			20%			0
RCR	RCR:Room Cavity Ratio															
	Coefficients of Utilization(CU)															
0.0	1.13	1.13	1.13	1.07	1.07	1.07	.97	.97	.97	.87	.87	.87	.78	.78	.78	.74
1.0	.93	.87	.82	.88	.83	.79	.79	.75	.71	.71	.67	.64	.63	.60	.58	.54
2.0	.79	.71	.64	.75	.67	.61	.67	.61	.56	.60	.55	.51	.53	.49	.46	.42
3.0	.68	.59	.52	.64	.56	.49	.58	.51	.45	.51	.46	.41	.46	.41	.37	.34
4.0	.59	.50	.43	.56	.48	.41	.50	.43	.37	.45	.39	.34	.40	.35	.31	.28
5.0	.53	.43	.36	.50	.41	.34	.45	.37	.32	.40	.34	.29	.36	.30	.26	.23
6.0	.47	.37	.31	.45	.36	.29	.40	.33	.27	.36	.30	.25	.32	.27	.23	.20
7.0	.42	.33	.27	.40	.32	.26	.36	.29	.24	.32	.26	.22	.29	.24	.20	.17
8.0	.38	.29	.23	.36	.28	.22	.33	.26	.21	.30	.24	.19	.26	.21	.17	.15
9.0	.35	.26	.21	.33	.25	.20	.30	.23	.18	.27	.21	.17	.24	.19	.16	.13
10.0	.32	.24	.18	.30	.23	.18	.28	.21	.17	.25	.19	.15	.23	.18	.14	.12



C Range: 0 - 360DEG
C Interval: 22.5DEG
Test Speed: HIGH
Temperature:25.3℃
Operators:Cloud
Test Date:2024-10-12

γ Range: 0 - 180DEG
γ Interval: 1.0DEG
Test System:EVERFINE GO-2000B_V1 SYSTEM V2.00.488
Humidity:65.0%
Test Distance:6.360m [K=1.0000]
Remarks:

WEC AND CCEC

Test:U:24.00V I:0.4333A P:10.40W PF:1.000 Freq:0Hz Lamp Flux:734.237x1 lm					
NAME: SF18-24V-3528-144-5000-80			TYPE:		WEIGHT:
SPEC.:			DIM.: Length=1m		SERIAL No.:
MFR.:			SUR.:		Shielding Angle:

pcc	80%			70%			50%			30%			10%			0														
pw	50%	30%	10%	50%	30%	10%	50%	30%	10%	50%	30%	10%	50%	30%	10%	0														
pfc	20%			20%			20%			20%			20%			0														
RCR	RCR:Room Cavity Ratio															Wall Exitance Coefficients(WEC)														
0.0																														
1.0	.400	.228	.072	.385	.220	.070	.356	.205	.065	.330	.191	.061	.306	.178	.057															
2.0	.342	.188	.058	.329	.181	.056	.303	.168	.052	.279	.156	.049	.257	.145	.046															
3.0	.302	.161	.048	.290	.155	.047	.266	.144	.044	.244	.134	.041	.224	.124	.038															
4.0	.271	.141	.041	.259	.136	.040	.238	.126	.038	.218	.117	.035	.200	.108	.033															
5.0	.245	.125	.036	.235	.121	.035	.215	.112	.033	.197	.104	.031	.180	.096	.029															
6.0	.224	.112	.032	.215	.108	.031	.197	.101	.029	.180	.094	.027	.164	.087	.026															
7.0	.206	.102	.029	.197	.098	.028	.181	.092	.026	.166	.085	.025	.151	.079	.023															
8.0	.191	.093	.026	.183	.090	.025	.168	.084	.024	.154	.078	.022	.140	.072	.021															
9.0	.178	.086	.024	.170	.083	.023	.156	.077	.022	.143	.072	.021	.131	.066	.019															
10.0	.166	.080	.022	.159	.077	.021	.146	.072	.020	.134	.066	.019	.122	.062	.018															

pcc	80%			70%			50%			30%			10%			0
pw	50%	30%	10%	50%	30%	10%	50%	30%	10%	50%	30%	10%	50%	30%	10%	0
pfc	20%			20%			20%			20%			20%			0
RCR	RCR:Room Cavity Ratio						Ceiling Cavity Exitance Coefficients (CCEC)									
0.0	.389	.389	.389	.332	.332	.332	.227	.227	.227	.130	.130	.130	.042	.042	.042	
1.0	.386	.355	.327	.331	.305	.282	.226	.210	.195	.130	.121	.113	.042	.039	.037	
2.0	.380	.333	.293	.326	.287	.253	.223	.198	.177	.129	.115	.104	.041	.037	.034	
3.0	.373	.317	.272	.320	.273	.236	.220	.190	.165	.127	.111	.098	.041	.036	.032	
4.0	.365	.305	.258	.313	.263	.224	.216	.183	.158	.125	.107	.093	.040	.035	.031	
5.0	.358	.295	.249	.307	.255	.217	.212	.178	.153	.123	.105	.091	.040	.034	.030	
6.0	.350	.287	.242	.301	.249	.211	.208	.174	.149	.121	.102	.089	.039	.033	.029	
7.0	.343	.281	.237	.295	.243	.207	.204	.171	.146	.119	.101	.087	.038	.033	.029	
8.0	.337	.275	.233	.290	.239	.204	.200	.168	.144	.117	.099	.086	.038	.032	.028	
9.0	.330	.271	.231	.284	.235	.201	.197	.165	.143	.115	.098	.085	.037	.032	.028	
10.0	.324	.267	.228	.280	.232	.199	.194	.163	.142	.113	.096	.084	.037	.032	.028	

C Range: 0 - 360DEG
C Interval: 22.5DEG
Test Speed: HIGH
Temperature:25.3℃
Operators:Cloud
Test Date:2024-10-12

γ Range: 0 - 180DEG
γ Interval: 1.0DEG
Test System:EVERFINE GO-2000B_V1 SYSTEM V2.00.488
Humidity:65.0%
Test Distance:6.360m [K=1.0000]
Remarks:

UGR(Unified Glare Rating) Table

Test:U:24.00V I:0.4333A P:10.40W PF:1.000 Freq:0Hz Lamp Flux:734.237x1 lm										
NAME: SF18-24V-3528-144-5000-80					TYPE:			WEIGHT:		
SPEC.:					DIM.: Length=1m			SERIAL No.:		
MFR.:					SUR.:			Shielding Angle:		
ceiling/cavity	0.7	0.7	0.5	0.5	0.3	0.7	0.7	0.5	0.5	0.3
walls	0.5	0.3	0.5	0.3	0.3	0.5	0.3	0.5	0.3	0.3
working plane	0.2	0.2	0.2	0.2	0.2	0.2	0.2	0.2	0.2	0.2
Room dimensions	Viewed crosswise					Viewed endwise				
x = 2H y = 2H	21.4	22.8	22.0	23.4	24.1	18.5	19.9	19.2	20.5	21.2
3H	24.3	25.5	25.0	26.2	26.9	20.3	21.5	20.9	22.1	22.9
4H	25.9	27.0	26.5	27.7	28.5	21.1	22.2	21.7	22.9	23.6
6H	27.6	28.7	28.3	29.4	30.2	21.7	22.8	22.4	23.5	24.3
8H	28.5	29.6	29.2	30.3	31.1	22.0	23.0	22.7	23.7	24.5
12H	29.6	30.6	30.3	31.3	32.1	22.2	23.2	22.9	23.9	24.8
4H 2H	22.0	23.2	22.7	23.8	24.6	20.0	21.2	20.7	21.8	22.6
3H	25.1	26.1	25.8	26.8	27.7	22.0	23.0	22.7	23.7	24.6
4H	26.9	27.8	27.6	28.5	29.4	23.0	23.9	23.7	24.6	25.5
6H	28.8	29.6	29.6	30.4	31.3	23.9	24.7	24.6	25.4	26.3
8H	29.9	30.6	30.6	31.4	32.3	24.2	25.0	25.0	25.8	26.7
12H	31.1	31.8	31.8	32.6	33.5	24.5	25.3	25.3	26.0	27.0
8H 4H	27.2	28.0	28.0	28.8	29.7	24.3	25.0	25.0	25.8	26.7
6H	29.5	30.1	30.3	30.9	31.9	25.5	26.2	26.3	27.0	27.9
8H	30.8	31.3	31.6	32.1	33.1	26.1	26.7	26.9	27.5	28.5
12H	32.2	32.7	33.0	33.5	34.5	26.7	27.2	27.5	28.0	29.0
12H 4H	27.3	28.0	28.0	28.8	29.7	24.7	25.4	25.4	26.1	27.1
6H	29.6	30.2	30.4	31.0	32.0	26.2	26.8	27.0	27.6	28.5
8H	31.0	31.5	31.8	32.3	33.3	26.9	27.5	27.8	28.3	29.3
Variations with the observer position at spacings(CIE Pub.117):										
S = 1.0H	+ 0.1 / - 0.1					+ 0.1 / - 0.1				
1.5H	+ 0.2 / - 0.3					+ 0.2 / - 0.3				
2.0H	+ 0.3 / - 0.4					+ 0.3 / - 0.5				

CIE Pub.117, 734.2 lm Total Lamp Luminous Flux Correct (8log(F/F0) = -1.1)
Area: 0.017 m2

C Range: 0 - 360DEG
C Interval: 22.5DEG
Test Speed: HIGH
Temperature:25.3℃
Operators:Cloud
Test Date:2024-10-12

γ Range: 0 - 180DEG
γ Interval: 1.0DEG
Test System:EVERFINE GO-2000B_V1 SYSTEM V2.00.488
Humidity:65.0%
Test Distance:6.360m [K=1.0000]
Remarks:

UTILIZATION FACTORS TABLE

Test:U:24.00V I:0.4333A P:10.40W PF:1.000 Freq:0Hz Lamp Flux:734.237x1 lm		
NAME: SF18-24V-3528-144-5000-80	TYPE:	WEIGHT:
SPEC.:	DIM.: Length=1m	SERIAL No.:
MFR.:	SUR.:	Shielding Angle:

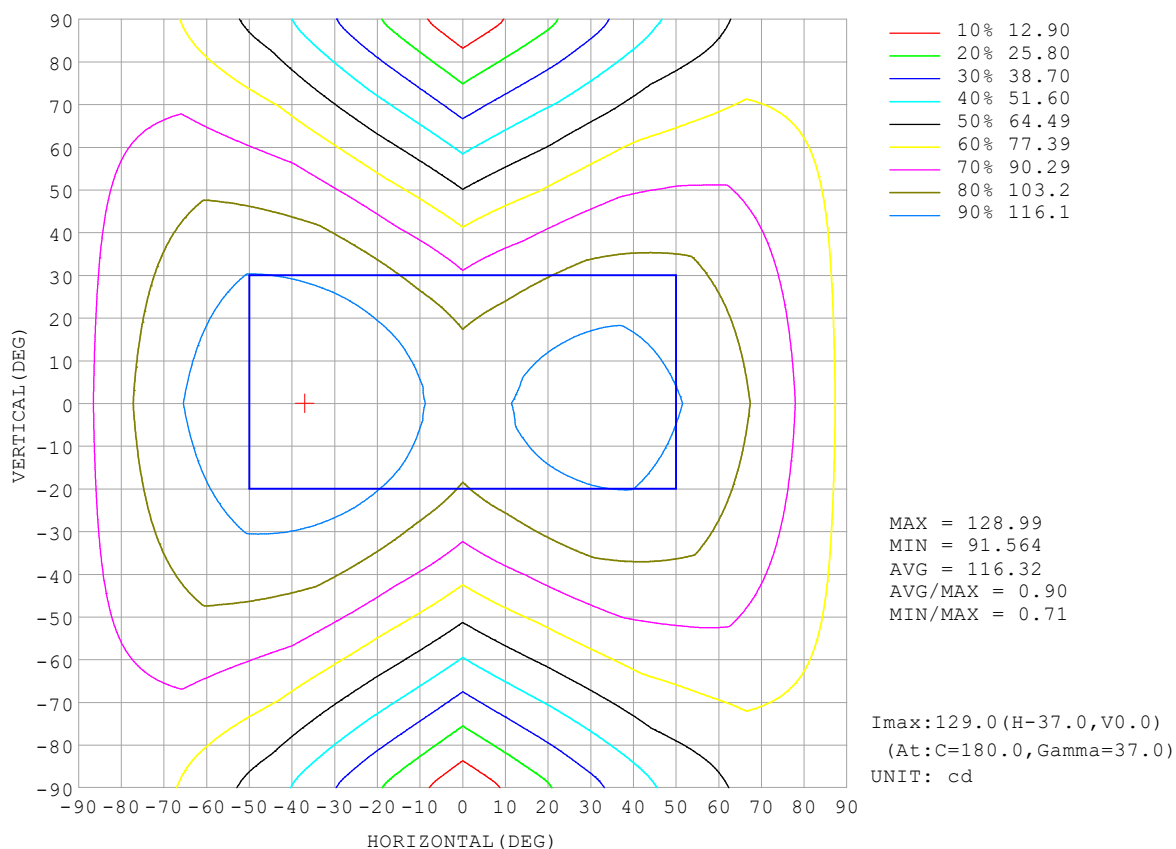
REFLECTANCE										
Ceiling	0.8	0.8	0.8	0.7	0.7	0.7	0.5	0.5	0.5	0
Walls	0.7	0.5	0.3	0.7	0.5	0.3	0.7	0.5	0.3	0
Working plane	0.2	0.2	0.2	0.2	0.2	0.2	0.2	0.2	0.2	0
ROOM INDEX	UTILIZATION FACTORS (PERCENT) $k(RI) \times RCR = 5$									
$k = 0.60$	44	31	24	42	30	23	40	29	23	16
0.80	53	39	31	51	38	30	48	37	29	21
1.00	60	47	38	58	45	37	54	45	36	26
1.25	67	54	45	64	52	44	59	49	42	31
1.50	72	60	50	69	58	49	64	54	47	35
2.00	80	68	59	76	66	58	70	61	54	41
2.50	85	74	65	81	71	63	73	65	59	44
3.00	89	79	71	84	75	68	77	69	63	48
4.00	94	85	78	89	81	75	81	74	69	52
5.00	97	89	83	92	85	80	83	78	73	55
ROOM INDEX	UF (total)									Direct
According to DIN EN 13032-2 2004			Suspended					SHRNOM = 1.25		

C Range: 0 - 360DEG
 C Interval: 22.5DEG
 Test Speed: HIGH
 Temperature: 25.3°C
 Operators: Cloud
 Test Date: 2024-10-12

γ Range: 0 - 180DEG
 γ Interval: 1.0DEG
 Test System: EVERFINE GO-2000B_V1 SYSTEM V2.00.488
 Humidity: 65.0%
 Test Distance: 6.360m [K=1.0000]
 Remarks:

ISOCANDELA DIAGRAM

Test:U:24.00V I:0.4333A P:10.40W PF:1.000 Freq:0Hz Lamp Flux:734.237x1 lm		
NAME: SF18-24V-3528-144-5000-80	TYPE:	WEIGHT:
SPEC.:	DIM.: Length=1m	SERIAL No.:
MFR.:	SUR.:	Shielding Angle:

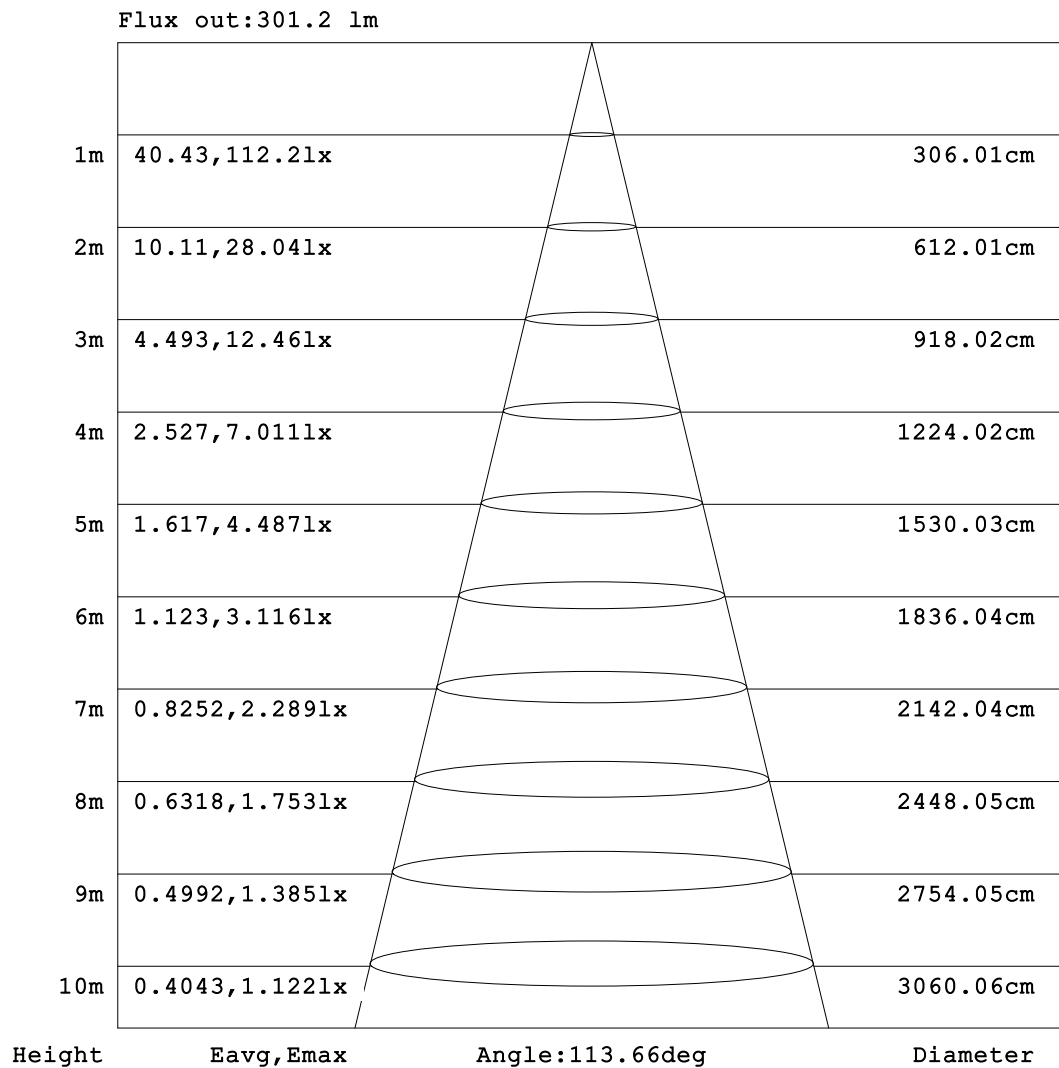


C Range: 0 - 360DEG
C Interval: 22.5DEG
Test Speed: HIGH
Temperature:25.3℃
Operators:Cloud
Test Date:2024-10-12

γ Range: 0 - 180DEG
γ Interval: 1.0DEG
Test System:EVERFINE GO-2000B_V1 SYSTEM V2.00.488
Humidity:65.0%
Test Distance:6.360m [K=1.0000]
Remarks:

AAI Figure

Test:U:24.00V I:0.4333A P:10.40W PF:1.000 Freq:0Hz Lamp Flux:734.237x1 lm		
NAME: SF18-24V-3528-144-5000-80	TYPE:	WEIGHT:
SPEC.:	DIM.: Length=1m	SERIAL No.:
MFR.:	SUR.:	Shielding Angle:



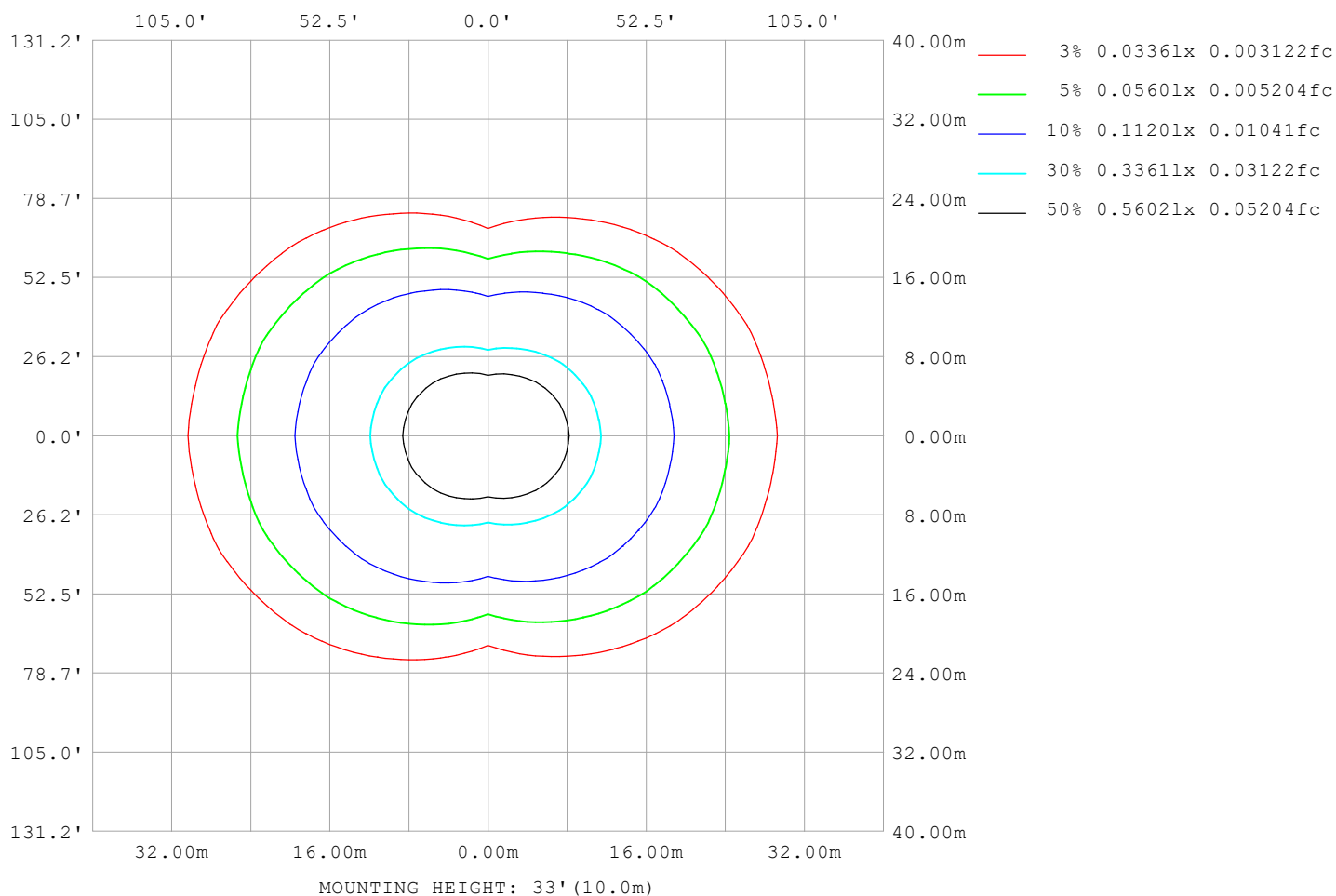
Note:The Curves indicate the illuminated area and the average illumination when the luminaire is at different distance.

C Range: 0 - 360DEG
C Interval: 22.5DEG
Test Speed: HIGH
Temperature:25.3℃
Operators:Cloud
Test Date:2024-10-12

γ Range: 0 - 180DEG
γ Interval: 1.0DEG
Test System:EVERFINE GO-2000B_V1 SYSTEM V2.00.488
Humidity:65.0%
Test Distance:6.360m [K=1.0000]
Remarks:

ISOLUX DIAGRAM

Test:U:24.00V I:0.4333A P:10.40W PF:1.000 Freq:0Hz Lamp Flux:734.237x1 lm		
NAME: SF18-24V-3528-144-5000-80	TYPE:	WEIGHT:
SPEC.:	DIM.: Length=1m	SERIAL No.:
MFR.:	SUR.:	Shielding Angle:



C Range: 0 - 360DEG
C Interval: 22.5DEG
Test Speed: HIGH
Temperature: 25.3°C
Operators: Cloud
Test Date: 2024-10-12

γ Range: 0 - 180DEG
γ Interval: 1.0DEG
Test System: EVERFINE GO-2000B_V1 SYSTEM V2.00.488
Humidity: 65.0%
Test Distance: 6.360m [K=1.0000]
Remarks:

LED Avg.L Report

Test:U:24.00V I:0.4333A P:10.40W PF:1.000 Freq:0Hz Lamp Flux:734.237x1 lm		
NAME: SF18-24V-3528-144-5000-80	TYPE:	WEIGHT:
SPEC.:	DIM.: Length=1m	SERIAL No.:
MFR.:	SUR.:	Shielding Angle:

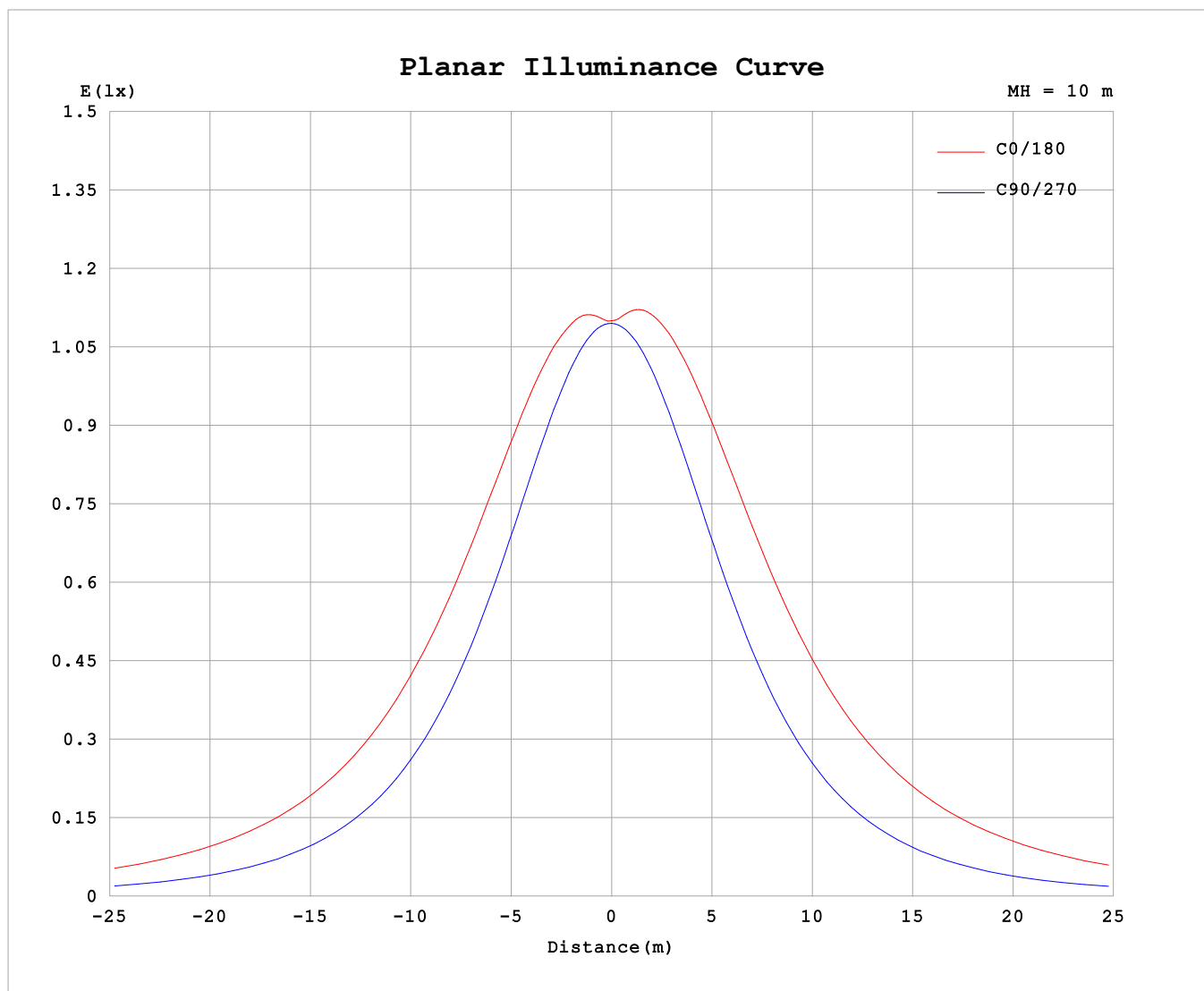
AvgL	cd/m2
L_0~180 (65) av	15409
L_0~180 (75) av	22670
L_0~180 (85) av	58192
L_90~270 (65) av	5863
L_90~270 (75) av	5951
L_90~270 (85) av	7065
L_45 (65) av	12079
L_45 (75) av	16863
L_45 (85) av	40703

Standard: GB/T 29293-2012

C Range: 0 - 360DEG
C Interval: 22.5DEG
Test Speed: HIGH
Temperature:25.3℃
Operators:Cloud
Test Date:2024-10-12

γ Range: 0 - 180DEG
γ Interval: 1.0DEG
Test System:EVERFINE GO-2000B_V1 SYSTEM V2.00.488
Humidity:65.0%
Test Distance:6.360m [K=1.0000]
Remarks:

Planar Illuminance Curve



C Range: 0 - 360DEG
C Interval: 22.5DEG
Test Speed: HIGH
Temperature: 25.3 °C
Operators: Cloud
Test Date: 2024-10-12

γ Range: 0 - 180DEG
 γ Interval: 1.0DEG
Test System: EVERFINE GO-2000B_V1 SYSTEM V2.00.488
Humidity: 65.0%
Test Distance: 6.360m [K=1.0000]
Remarks:

LUMINOUS DISTRIBUTION INTENSITY DATA

Test:U:24.00V I:0.4333A P:10.40W PF:1.000 Freq:0Hz Lamp Flux:734.237x1 lm																	
NAME: SF18-24V-3528-144-5000-80									TYPE:						WEIGHT:		
SPEC.:									DIM.: Length=1m						SERIAL No.:		
MFR.:									SUR.:						Shielding Angle:		

Table--1

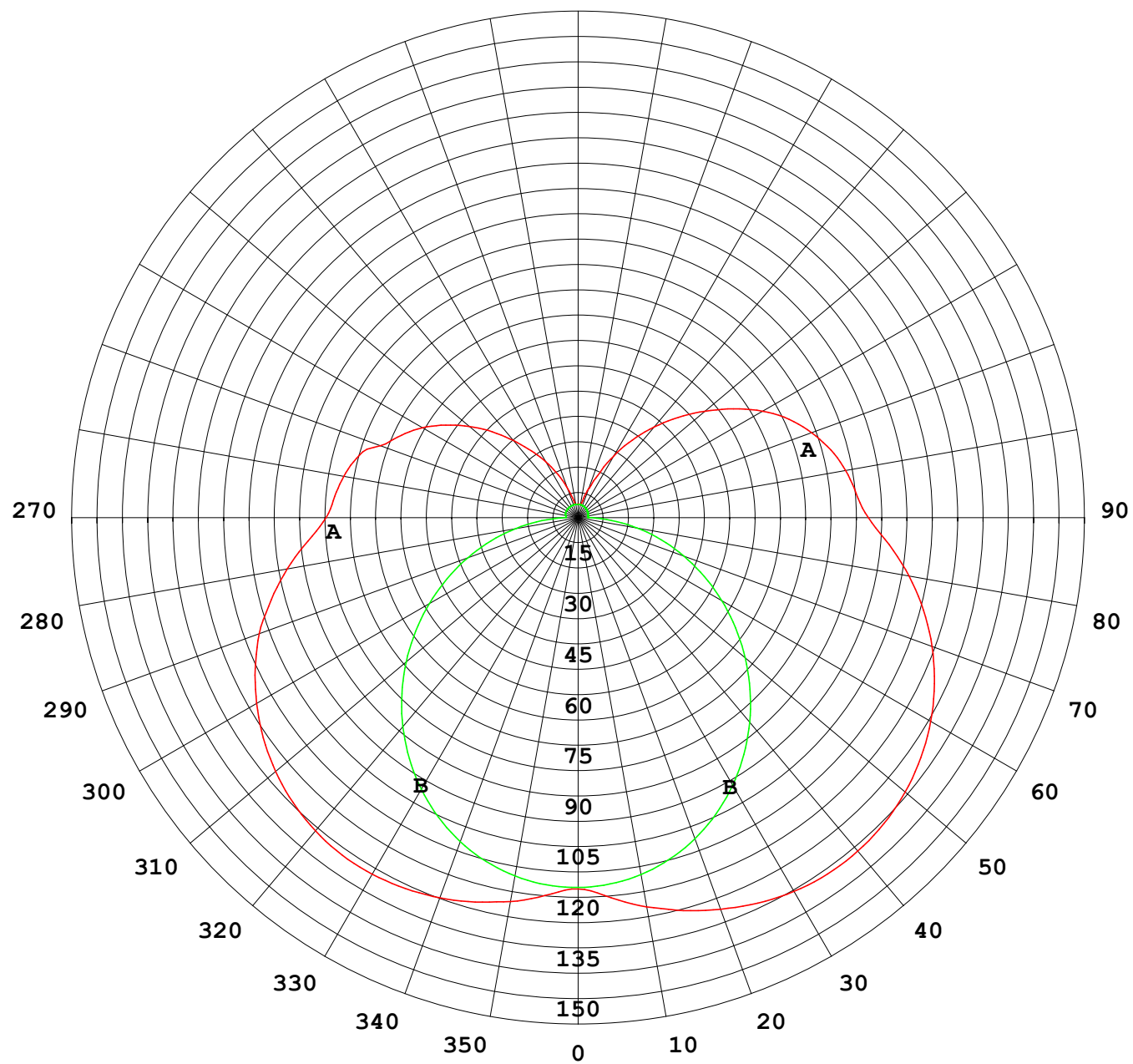
UNIT: cd

C (DEG) γ (DEG)		0	22.5	45	67.5	90	112.5	135	157.5	180	202.5	225	247.5	270	292.5	315	337.5			
0	110	110	110	110	110	110	110	110	110	110	110	110	110	110	110	110	110			
5	112	112	111	110	109	110	112	112	112	113	112	111	110	109	109	111	112			
10	115	115	113	110	108	110	114	116	117	116	113	110	108	109	109	112	114			
15	118	117	113	109	106	110	115	119	120	119	115	109	105	108	108	113	116			
20	120	118	114	107	102	109	116	121	123	121	115	108	101	106	106	113	117			
25	121	119	113	105	98.1	107	116	123	126	123	115	106	96.9	104	104	112	118			
30	122	119	112	102	93.0	104	116	125	128	124	115	102	91.7	99.8	110	118				
35	122	119	110	97.6	87.3	99.8	114	125	129	124	113	98.5	85.8	95.6	108	118				
40	121	117	107	93.0	80.9	95.4	112	124	129	124	111	93.9	79.2	90.7	105	116				
45	119	115	104	87.8	74.0	90.3	109	123	128	122	108	88.7	72.1	85.3	102	114				
50	117	112	99.7	82.0	66.6	84.9	106	121	126	120	104	83.2	64.7	79.5	97.9	111				
55	114	109	94.9	75.9	58.9	78.9	101	118	124	117	100	77.4	57.0	73.4	93.2	108				
60	110	105	89.7	69.5	51.0	72.6	96.2	114	120	113	95.2	71.1	49.2	67.1	88.2	104				
65	105	99.8	84.0	62.7	42.9	65.9	90.6	109	116	109	89.9	64.6	41.3	60.6	82.7	99.2				
70	100	94.5	77.8	55.6	34.8	58.9	84.4	104	111	104	84.0	57.7	33.4	53.7	76.4	93.7				
75	93.9	88.4	71.3	48.4	26.8	51.6	77.8	98.0	106	98.1	77.7	50.7	25.6	46.4	69.9	87.7				
80	87.3	81.6	64.5	41.1	18.8	44.2	71.1	91.4	99.3	91.6	71.1	43.6	17.8	39.2	63.3	81.0				
85	80.2	74.3	57.3	34.0	10.9	36.7	63.7	84.3	92.3	84.6	64.0	36.3	10.1	32.0	56.1	74.0				
90	74.5	68.3	51.1	27.5	3.67	30.1	57.3	77.9	85.7	78.3	57.7	30.1	3.06	26.0	50.3	68.2				
95	72.2	66.2	49.4	26.7	3.65	29.1	55.4	75.0	82.5	75.5	55.8	29.2	2.98	25.5	48.8	66.1				
100	70.3	64.6	48.1	22.4	3.78	28.1	54.0	73.0	80.3	73.4	54.4	28.2	2.99	19.6	47.5	64.6				
105	67.8	61.5	42.5	19.1	3.94	25.8	51.7	70.3	77.3	70.7	52.2	25.8	3.04	14.3	43.1	61.7				
110	62.2	55.8	39.1	17.3	4.01	23.0	48.7	66.7	73.4	67.1	49.1	22.9	3.11	15.1	34.1	56.5				
115	57.7	52.1	35.7	15.5	4.03	20.1	44.4	62.3	68.8	62.6	44.8	20.0	3.20	14.6	29.8	51.1				
120	53.2	47.8	32.5	13.2	4.05	17.2	39.7	56.6	62.9	56.9	39.9	17.0	3.28	13.0	29.8	41.2				
125	47.8	42.8	28.1	11.6	4.07	14.0	34.9	50.2	56.1	50.4	35.0	13.7	3.35	10.9	26.2	35.5				
130	42.0	37.6	22.8	9.67	4.08	11.3	30.0	43.7	49.0	43.8	30.0	11.0	3.42	8.79	21.5	34.4				
135	35.9	32.5	19.1	7.82	4.08	8.91	25.1	37.3	42.0	37.3	25.1	8.61	3.52	6.99	18.0	30.2				
140	29.8	26.1	14.6	6.30	4.08	6.76	20.0	30.9	35.0	30.9	20.0	6.50	3.60	5.59	14.4	25.4				
145	24.1	19.3	11.3	5.06	4.07	4.97	15.3	24.5	28.0	24.6	15.2	4.79	3.67	4.52	11.0	18.9				
150	19.0	13.9	8.69	4.21	4.07	4.05	11.2	18.1	21.0	18.1	11.1	3.77	3.71	3.87	8.29	14.1				
155	13.9	9.65	6.39	4.06	4.05	4.04	7.65	12.7	13.6	12.7	7.62	3.76	3.78	3.86	6.18	9.73				
160	9.27	6.60	4.77	4.05	4.05	4.05	4.77	8.09	9.27	8.10	4.79	3.83	3.86	3.90	4.60	6.56				
165	5.32	4.50	4.10	4.04	4.04	4.05	4.10	4.53	5.21	4.50	3.97	3.89	3.92	3.95	4.10	4.49				
170	4.02	4.07	4.09	4.03	4.02	4.05	4.10	4.08	3.95	3.98	4.02	3.95	3.97	4.00	4.12	4.13				
175	4.02	4.12	4.09	4.03	4.02	4.05	4.11	4.13	4.01	4.03	4.06	3.99	3.99	4.03	4.13	4.15				
180	4.05	4.12	4.09	4.03	4.02	4.05	4.13	4.16	4.05	4.10	4.08	4.01	4.01	4.04	4.13	4.16				

C Range: 0 - 360DEG
C Interval: 22.5DEG
Test Speed: HIGH
Temperature:25.3℃
Operators:Cloud
Test Date:2024-10-12

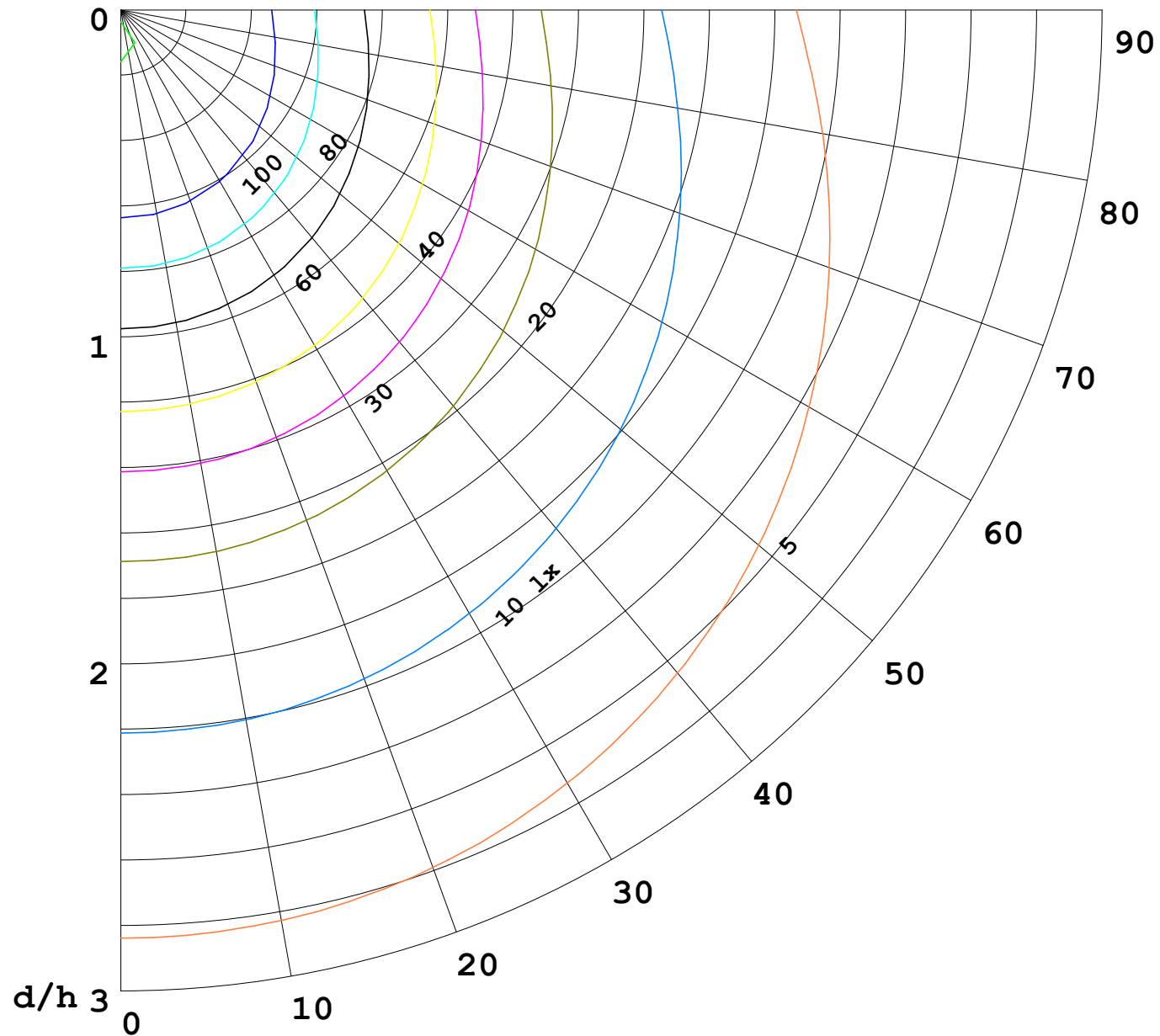
γ Range: 0 - 180DEG
γ Interval: 1.0DEG
Test System:EVERFINE GO-2000B_V1 SYSTEM V2.00.488
Humidity:65.0%
Test Distance:6.360m [K=1.0000]
Remarks:

I (cd)



1000 lm

$\kappa = 1$



F = 1000 lm
 K = 0.7
 Hcc = 0.8 m
 Hfc = 0.0 m
 Eave = 100 lx

	Pcc	Pw	Pfc
—————	70	50	30
—————	50	30	20

