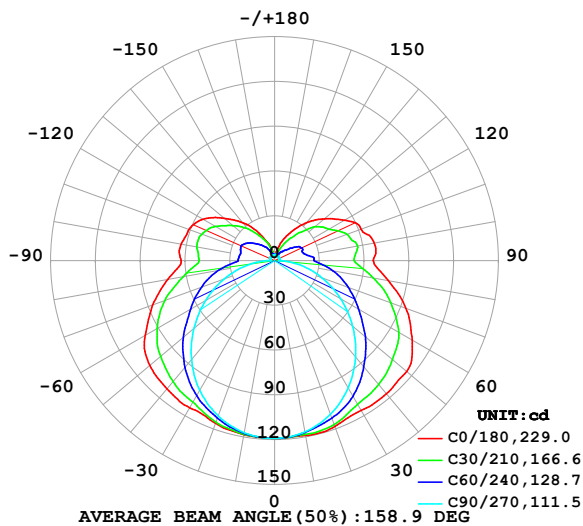


LUMINAIRE PHOTOMETRIC TEST REPORT

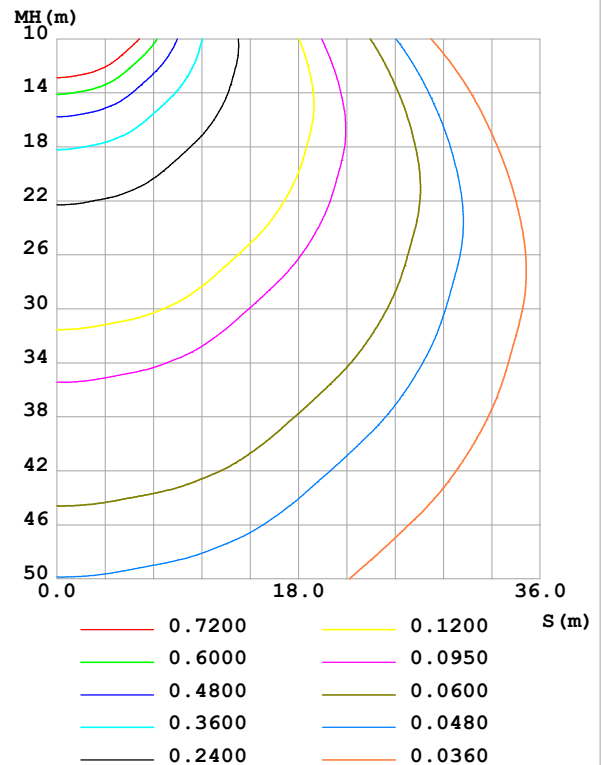
Test:U:24.00V I:0.4258A P:10.22W PF:1.000 Freq:0Hz Lamp Flux:656.722x1 lm		
NAME: SF18-24V-3528-144-2700K-80	TYPE:	WEIGHT:
SPEC.:	DIM.: Length=1m	SERIAL No.:
MFR.: OLympia lighting	SUR.:	Shielding Angle:

DATA OF LAMP		PHOTOMETRIC DATA				Eff: 64.26 lm/W
MODEL	3528	I _{max} (cd)	119.3	S/MH(C0/180)	1.46	
NOMINAL POWER(W)	10	LOR(%)	100.0	S/MH(C90/270)	1.25	
RATED VOLTAGE(V)	24	TOTAL FLUX(lm)	656.72	η UP,DN(C0-180)	12.9,37.0	
NOMINAL FLUX(lm)	656.722	CIE CLASS	SEMI-D.	η UP,DN(C180-360)	12.8,37.2	
LAMPS INSIDE	1	η up (%)	25.8	CIBSE SHR NOM	1.50	
TEST VOLTAGE(V)		η down (%)	74.2	CIBSE SHR MAX	1.55	

LUMINOUS INTENSITY DISTRIBUTION DIAGRAM



C0 PLANE ISOLUX DIAGRAM (UNIT:lx)



C Range: 0 - 360DEG
C Interval: 30.0DEG
Test Speed: HIGH
Temperature:25.3℃
Operators:
Test Date:2025-02-15

γ Range: 0 - 180DEG
γ Interval: 1.0DEG
Test System:EVERFINE GO-2000B_V1 SYSTEM V2.00.488
Humidity:65.0%
Test Distance:6.360m [K=1.0000]
Remarks:

ZONAL FLUX DIAGRAM

ZONAL FLUX DIAGRAM:

γ	C0	C45	C90	C135	C180	C225	C270	C315	γ	Φ zone	Φ total	%lum,lamp
10	119.0	117.6	116.5	117.4	118.5	117.8	117.1	118.0	0- 10	11.30	11.30	1.72,1.72
20	118.2	114.6	109.5	113.0	116.0	113.8	110.7	115.3	10- 20	32.86	44.15	6.72,6.72
30	116.0	108.2	98.57	105.6	113.8	107.1	100.4	109.1	20- 30	51.15	95.30	14.5,14.5
40	116.6	100.7	84.39	97.68	112.2	99.62	86.66	101.6	30- 40	65.18	160.5	24.4,24.4
50	115.5	91.25	68.20	87.16	109.1	89.89	70.51	92.08	40- 50	73.67	234.1	35.7,35.7
60	106.4	80.56	51.09	75.04	100.2	77.93	53.38	80.94	50- 60	75.74	309.9	47.2,47.2
70	93.70	67.66	33.87	62.41	86.91	65.29	35.94	67.65	60- 70	70.99	380.9	58,58
80	77.42	53.47	17.25	47.71	72.61	50.21	18.74	53.03	70- 80	60.51	441.4	67.2,67.2
90	66.16	39.90	3.006	36.22	62.60	37.54	3.323	38.74	80- 90	46.13	487.5	74.2,74.2
100	67.88	39.24	3.018	38.03	63.72	38.28	3.321	38.00	90-100	40.50	528.0	80.4,80.4
110	61.75	35.78	3.162	36.84	61.14	38.14	3.569	33.14	100-110	38.05	566.1	86.2,86.2
120	54.31	30.59	3.295	32.59	55.57	34.41	3.716	28.57	110-120	33.02	599.1	91.2,91.2
130	43.63	23.93	3.411	26.07	44.27	27.40	3.841	21.99	120-130	24.97	624.1	95,95
140	33.14	15.91	3.737	19.65	33.28	20.65	3.780	15.97	130-140	16.58	640.6	97.6,97.6
150	22.31	9.347	3.855	13.28	21.39	13.90	3.719	9.808	140-150	9.506	650.2	99,99
160	13.16	5.280	3.927	8.125	12.30	8.333	3.786	6.263	150-160	4.485	654.6	99.7,99.7
170	4.732	4.498	4.040	4.673	4.460	4.598	3.933	4.765	160-170	1.673	656.3	99.9,99.9
180	3.871	4.116	4.080	4.243	3.851	4.106	4.077	4.257	170-180	0.4118	656.7	100,100
DEG	LUMINOUS INTENSITY:cd									UNIT:lm		

Conical surface Flux(90deg): 196.63 lm

%lum = 29.9%

%lamp = 29.9%

Conical surface Flux(130deg): 346.35 lm

%lum = 52.7%

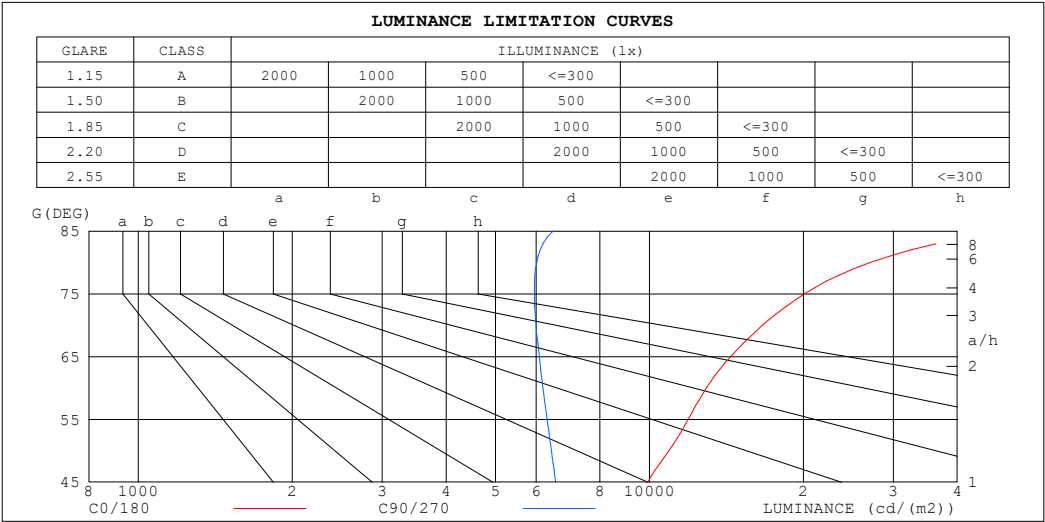
%lamp = 52.7%

C Range: 0 - 360DEG
 C Interval: 30.0DEG
 Test Speed: HIGH
 Temperature:25.3℃
 Operators:
 Test Date:2025-02-15

γ Range: 0 - 180DEG
 γ Interval: 1.0DEG
 Test System:EVERFINE GO-2000B_V1 SYSTEM V2.00.488
 Humidity:65.0%
 Test Distance:6.360m [K=1.0000]
 Remarks:

LUMINANCE LIMITATION CURVES

Test:U:24.00V I:0.4258A P:10.22W PF:1.000 Freq:0Hz Lamp Flux:656.722x1 lm		
NAME: SF18-24V-3528-144-2700K-80	TYPE:	WEIGHT:
SPEC.:	DIM.: Length=1m	SERIAL No.:
MFR.: OLympia lighting	SUR.:	Shielding Angle:



LUMINANCE cd/(m2)		
G (DEG)	C0/180	C90/270
85	48814	6480
80	27074	6016
75	20119	5955
70	16637	5998
65	14419	6086
60	12927	6189
55	11906	6303
50	10916	6427
45	9922	6551

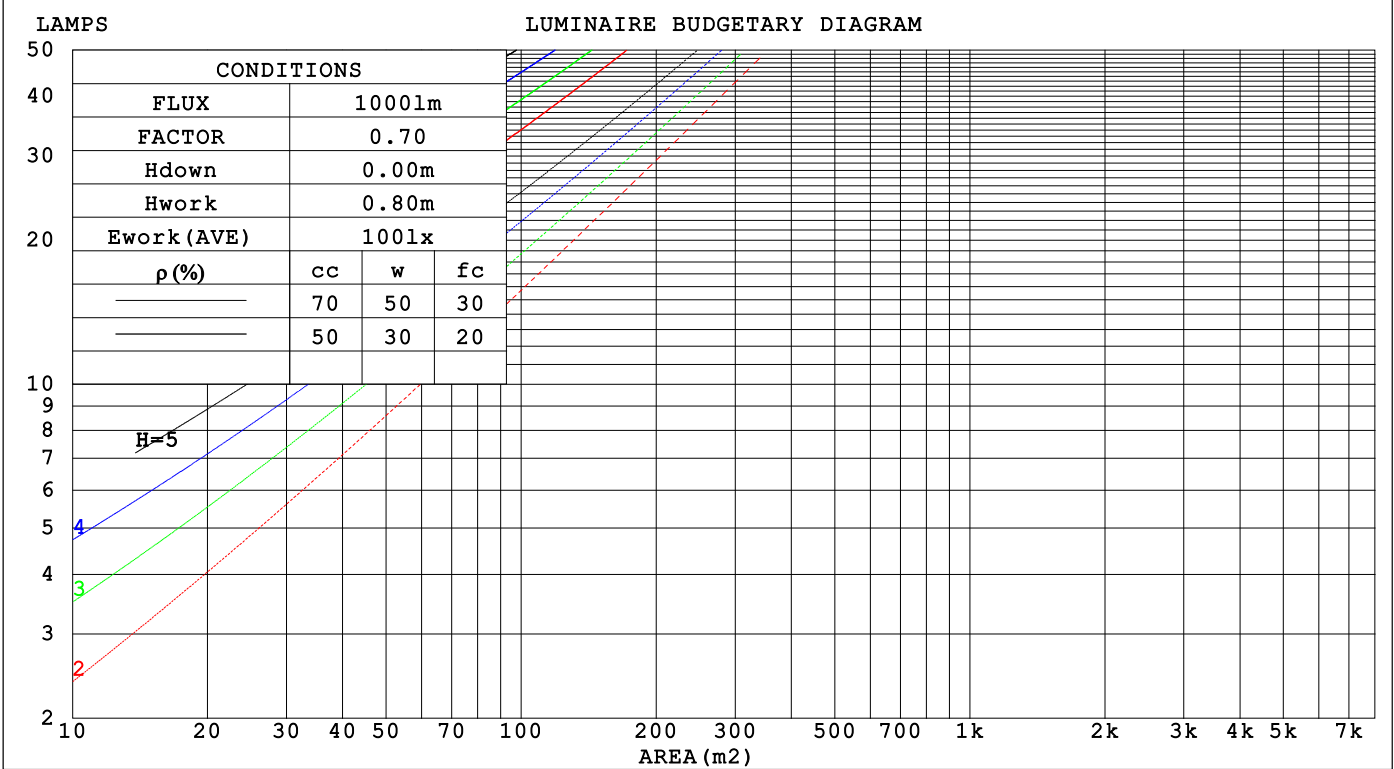
C Range: 0 - 360DEG
C Interval: 30.0DEG
Test Speed: HIGH
Temperature:25.3℃
Operators:
Test Date:2025-02-15

γ Range: 0 - 180DEG
γ Interval: 1.0DEG
Test System:EVERFINE GO-2000B_V1 SYSTEM V2.00.488
Humidity:65.0%
Test Distance:6.360m [K=1.0000]
Remarks:

CU AND LUMINAIRE BUDGETARY ESTIMATE DIAGRAM

Test:U:24.00V I:0.4258A P:10.22W PF:1.000 Freq:0Hz		
Lamp Flux:656.722x1 lm		
NAME: SF18-24V-3528-144-2700K-80	TYPE:	WEIGHT:
SPEC.:	DIM.: Length=1m	SERIAL No.:
MFR.: OLYMPIA lighting	SUR.:	Shielding Angle:

pcc	80%			70%			50%			30%			10%			0
pw	50%	30%	10%	50%	30%	10%	50%	30%	10%	50%	30%	10%	50%	30%	10%	0
pfc	20%			20%			20%			20%			20%			0
RCR	RCR:Room Cavity Ratio															



C Range: 0 - 360DEG
C Interval: 30.0DEG
Test Speed: HIGH
Temperature:25.3℃
Operators:
Test Date:2025-02-15

γ Range: 0 - 180DEG
γ Interval: 1.0DEG
Test System:EVERFINE GO-2000B_V1 SYSTEM V2.00.488
Humidity:65.0%
Test Distance:6.360m [K=1.0000]
Remarks:

WEC AND CCEC

Test:U:24.00V I:0.4258A P:10.22W PF:1.000 Freq:0Hz Lamp Flux:656.722x1 lm		
NAME: SF18-24V-3528-144-2700K-80	TYPE:	WEIGHT:
SPEC.:	DIM.: Length=1m	SERIAL No.:
MFR.: OLympia lighting	SUR.:	Shielding Angle:

pcc	80%			70%			50%			30%			10%			0														
pw	50%	30%	10%	50%	30%	10%	50%	30%	10%	50%	30%	10%	50%	30%	10%	0														
pfc	20%			20%			20%			20%			20%			0														
RCR	RCR:Room Cavity Ratio															Wall Exitance Coefficients(WEC)														
0.0																														
1.0	.381	.217	.069	.366	.209	.066	.338	.194	.062	.312	.180	.058	.288	.167	.054															
2.0	.330	.181	.056	.317	.174	.054	.291	.162	.050	.267	.150	.047	.246	.139	.044															
3.0	.294	.156	.047	.281	.151	.045	.258	.140	.042	.236	.130	.040	.216	.120	.037															
4.0	.264	.137	.040	.253	.132	.039	.232	.123	.037	.212	.114	.034	.194	.105	.032															
5.0	.240	.122	.035	.230	.118	.034	.211	.110	.032	.193	.102	.030	.176	.094	.028															
6.0	.220	.110	.032	.211	.106	.031	.193	.099	.029	.177	.092	.027	.161	.085	.025															
7.0	.203	.100	.028	.194	.097	.028	.178	.090	.026	.163	.084	.024	.149	.077	.023															
8.0	.188	.092	.026	.180	.089	.025	.165	.083	.024	.151	.077	.022	.138	.071	.021															
9.0	.175	.085	.024	.168	.082	.023	.154	.076	.022	.141	.071	.020	.129	.065	.019															
10.0	.164	.079	.022	.157	.076	.021	.144	.071	.020	.132	.066	.019	.121	.061	.017															

pcc	80%			70%			50%			30%			10%			0
pw	50%	30%	10%	50%	30%	10%	50%	30%	10%	50%	30%	10%	50%	30%	10%	0
pfc	20%			20%			20%			20%			20%			0
RCR	RCR:Room Cavity Ratio						Ceiling Cavity Exitance Coefficients (CCEC)									
0.0	.387	.387	.387	.331	.331	.331	.226	.226	.226	.130	.130	.130	.041	.041	.041	
1.0	.383	.353	.327	.328	.303	.281	.224	.209	.194	.129	.121	.113	.041	.039	.037	
2.0	.377	.331	.293	.323	.285	.253	.221	.197	.176	.127	.115	.103	.041	.037	.034	
3.0	.369	.315	.271	.317	.272	.235	.217	.189	.165	.126	.110	.097	.040	.036	.032	
4.0	.362	.303	.257	.310	.261	.223	.213	.182	.157	.123	.107	.093	.040	.035	.031	
5.0	.354	.293	.248	.304	.253	.215	.210	.177	.152	.121	.104	.090	.039	.034	.030	
6.0	.347	.285	.241	.298	.247	.210	.206	.173	.148	.119	.102	.088	.039	.033	.029	
7.0	.340	.279	.236	.292	.242	.205	.202	.169	.146	.117	.100	.087	.038	.033	.029	
8.0	.333	.273	.232	.287	.237	.202	.199	.166	.143	.116	.098	.085	.037	.032	.028	
9.0	.327	.268	.229	.282	.233	.200	.195	.164	.142	.114	.097	.085	.037	.032	.028	
10.0	.321	.264	.226	.277	.230	.198	.192	.162	.140	.112	.096	.084	.036	.031	.028	

C Range: 0 - 360DEG
C Interval: 30.0DEG
Test Speed: HIGH
Temperature:25.3℃
Operators:
Test Date:2025-02-15

γ Range: 0 - 180DEG
γ Interval: 1.0DEG
Test System:EVERFINE GO-2000B_V1 SYSTEM V2.00.488
Humidity:65.0%
Test Distance:6.360m [K=1.0000]
Remarks:

UGR(Unified Glare Rating) Table

Test:U:24.00V I:0.4258A P:10.22W PF:1.000 Freq:0Hz Lamp Flux:656.722x1 lm											
NAME: SF18-24V-3528-144-2700K-80					TYPE:			WEIGHT:			
SPEC.:					DIM.: Length=1m			SERIAL No.:			
MFR.: OLympia lighting					SUR.:			Shielding Angle:			
ceiling/cavity	0.7	0.7	0.5	0.5	0.3	0.7	0.7	0.5	0.5	0.3	
walls	0.5	0.3	0.5	0.3	0.3	0.5	0.3	0.5	0.3	0.3	
working plane	0.2	0.2	0.2	0.2	0.2	0.2	0.2	0.2	0.2	0.2	
Room dimensions		Viewed crosswise					Viewed endwise				
x = 2H y = 2H	2H	21.9	23.2	22.5	23.8	24.5	18.8	20.1	19.4	20.7	21.4
	3H	24.7	25.8	25.3	26.5	27.2	20.4	21.6	21.1	22.3	23.0
	4H	26.1	27.3	26.8	27.9	28.7	21.2	22.3	21.9	23.0	23.8
	6H	27.7	28.8	28.4	29.4	30.2	21.8	22.9	22.5	23.6	24.4
	8H	28.6	29.6	29.3	30.3	31.1	22.1	23.1	22.8	23.8	24.6
	12H	29.6	30.6	30.3	31.3	32.1	22.3	23.3	23.0	24.0	24.8
4H	2H	22.4	23.5	23.0	24.1	24.9	20.2	21.3	20.8	21.9	22.7
	3H	25.4	26.4	26.1	27.1	27.9	22.0	23.0	22.7	23.7	24.5
	4H	27.1	28.0	27.8	28.7	29.6	23.0	23.9	23.7	24.6	25.4
	6H	28.9	29.7	29.6	30.4	31.3	23.8	24.6	24.5	25.3	26.2
	8H	29.9	30.6	30.6	31.4	32.3	24.1	24.9	24.9	25.6	26.5
	12H	31.0	31.7	31.8	32.5	33.4	24.4	25.1	25.2	25.9	26.8
8H	4H	27.4	28.1	28.1	28.9	29.8	24.2	24.9	24.9	25.7	26.6
	6H	29.5	30.1	30.3	30.9	31.8	25.3	26.0	26.1	26.7	27.7
	8H	30.7	31.3	31.5	32.0	33.0	25.9	26.4	26.7	27.2	28.2
	12H	32.1	32.6	32.9	33.4	34.4	26.3	26.8	27.2	27.6	28.6
12H	4H	27.4	28.1	28.2	28.9	29.8	24.5	25.2	25.3	26.0	26.9
	6H	29.6	30.1	30.4	30.9	31.9	25.9	26.5	26.7	27.3	28.2
	8H	30.9	31.4	31.7	32.2	33.2	26.6	27.1	27.4	27.9	28.9
Variations with the observer position at spacings(CIE Pub.117):											
S = 1.0H		+ 0.1 / - 0.1					+ 0.1 / - 0.1				
1.5H		+ 0.2 / - 0.2					+ 0.2 / - 0.3				
2.0H		+ 0.2 / - 0.3					+ 0.2 / - 0.4				

CIE Pub.117, 656.7 lm Total Lamp Luminous Flux Correct (8log(F/F0) = -1.5)
Area: 0.0165 m2

C Range: 0 - 360DEG
C Interval: 30.0DEG
Test Speed: HIGH
Temperature:25.3℃
Operators:
Test Date:2025-02-15

γ Range: 0 - 180DEG
γ Interval: 1.0DEG
Test System:EVERFINE GO-2000B_V1 SYSTEM V2.00.488
Humidity:65.0%
Test Distance:6.360m [K=1.0000]
Remarks:

UTILIZATION FACTORS TABLE

Test:U:24.00V I:0.4258A P:10.22W PF:1.000 Freq:0Hz Lamp Flux:656.722x1 lm		
NAME: SF18-24V-3528-144-2700K-80	TYPE:	WEIGHT:
SPEC.:	DIM.: Length=1m	SERIAL No.:
MFR.: OLympia lighting	SUR.:	Shielding Angle:

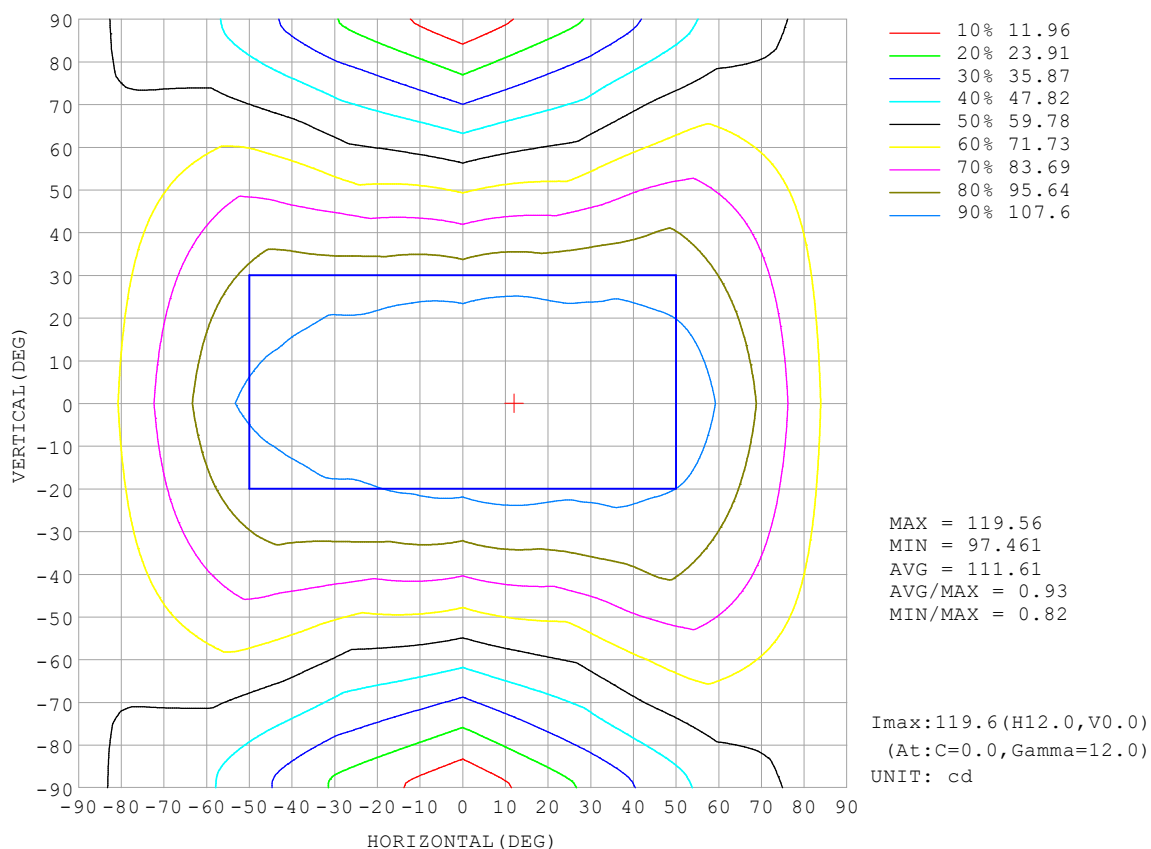
REFLECTANCE										
Ceiling	0.8	0.8	0.8	0.7	0.7	0.7	0.5	0.5	0.5	0
Walls	0.7	0.5	0.3	0.7	0.5	0.3	0.7	0.5	0.3	0
Working plane	0.2	0.2	0.2	0.2	0.2	0.2	0.2	0.2	0.2	0
ROOM INDEX	UTILIZATION FACTORS (PERCENT) $k(RI) \times RCR = 5$									
$k = 0.60$	45	33	25	44	32	25	41	31	24	18
0.80	54	41	33	52	40	32	49	38	31	23
1.00	62	49	40	60	47	39	55	47	38	28
1.25	69	56	47	66	54	46	61	51	44	33
1.50	74	61	53	71	59	51	65	56	49	37
2.00	81	70	62	78	67	60	71	63	56	43
2.50	86	76	67	82	73	65	75	67	61	46
3.00	90	80	73	86	77	70	78	71	65	50
4.00	95	87	80	90	83	77	82	76	71	54
5.00	98	91	85	93	87	81	84	79	75	57
ROOM INDEX	UF (total)									Direct
According to DIN EN 13032-2 2004			Suspended					SHRNOM = 1.25		

C Range: 0 - 360DEG
 C Interval: 30.0DEG
 Test Speed: HIGH
 Temperature: 25.3 °C
 Operators:
 Test Date: 2025-02-15

γ Range: 0 - 180DEG
 γ Interval: 1.0DEG
 Test System: EVERFINE GO-2000B_V1 SYSTEM V2.00.488
 Humidity: 65.0%
 Test Distance: 6.360m [K=1.0000]
 Remarks:

ISOCANDELA DIAGRAM

Test:U:24.00V I:0.4258A P:10.22W PF:1.000 Freq:0Hz Lamp Flux:656.722x1 lm		
NAME: SF18-24V-3528-144-2700K-80	TYPE:	WEIGHT:
SPEC.:	DIM.: Length=1m	SERIAL No.:
MFR.: OLympia lighting	SUR.:	Shielding Angle:

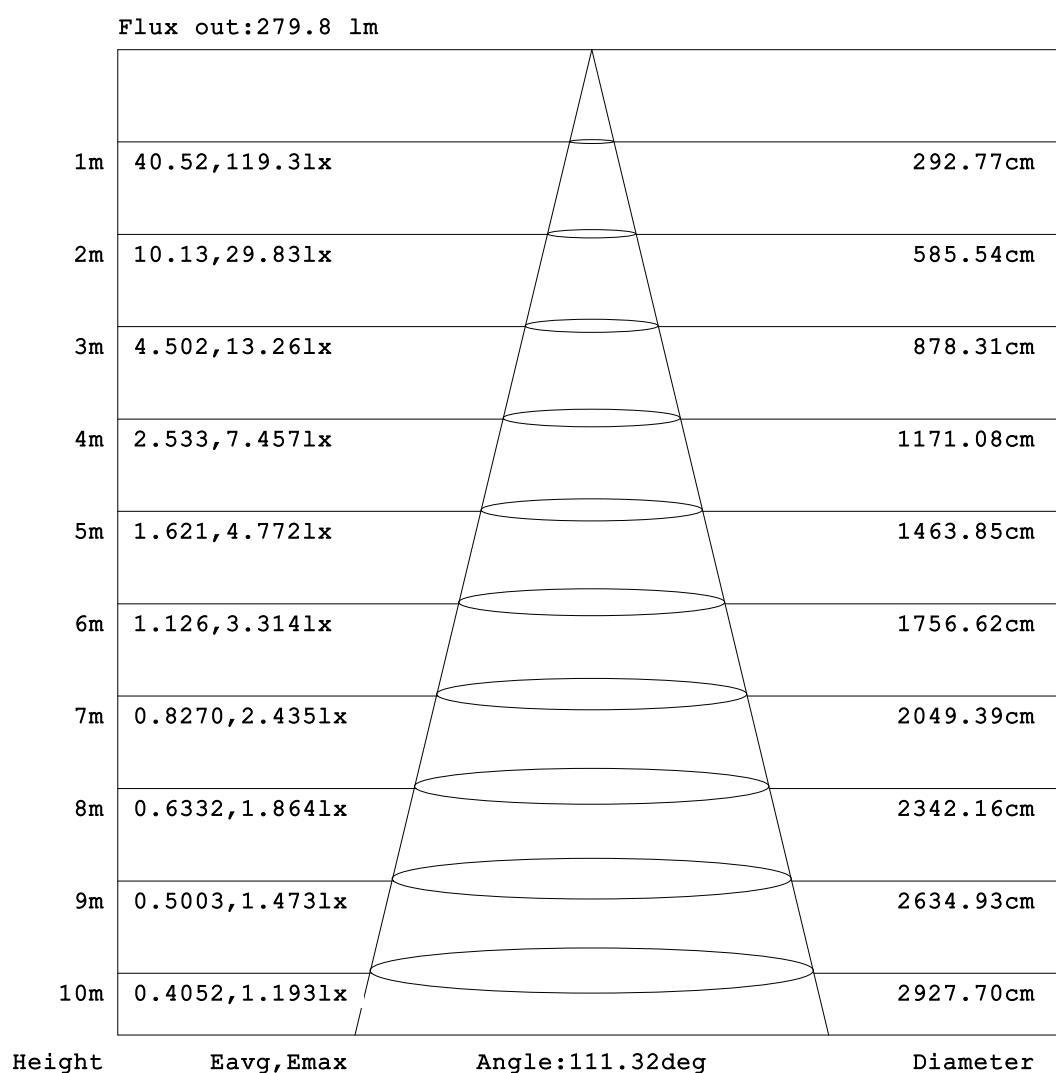


C Range: 0 - 360DEG
C Interval: 30.0DEG
Test Speed: HIGH
Temperature:25.3℃
Operators:
Test Date:2025-02-15

γ Range: 0 - 180DEG
γ Interval: 1.0DEG
Test System:EVERFINE GO-2000B_V1 SYSTEM V2.00.488
Humidity:65.0%
Test Distance:6.360m [K=1.0000]
Remarks:

AAI Figure

Test:U:24.00V I:0.4258A P:10.22W PF:1.000 Freq:0Hz Lamp Flux:656.722x1 lm		
NAME: SF18-24V-3528-144-2700K-80	TYPE:	WEIGHT:
SPEC.:	DIM.: Length=1m	SERIAL No.:
MFR.: OLympia lighting	SUR.:	Shielding Angle:



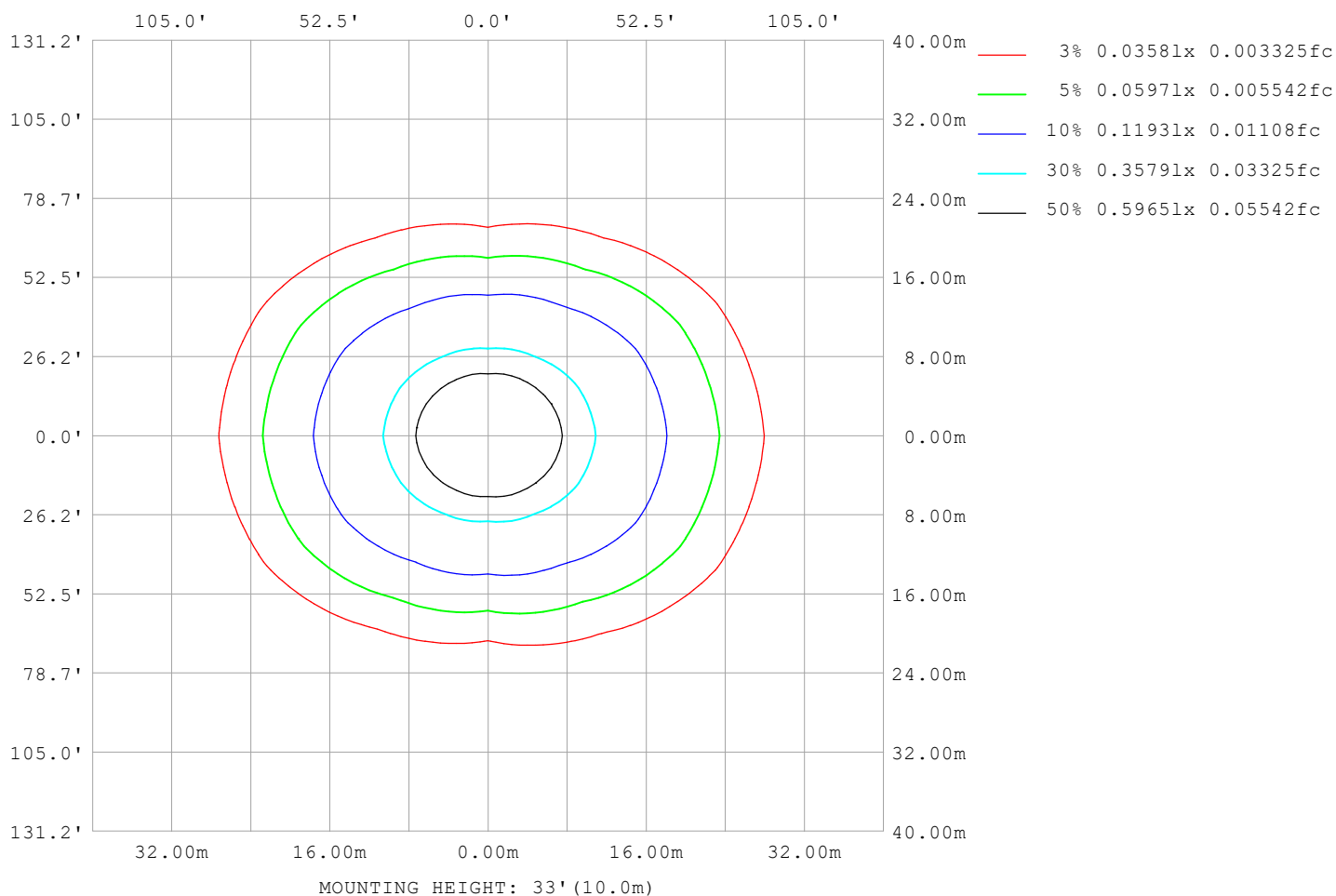
Note:The Curves indicate the illuminated area and the average illumination when the luminaire is at different distance.

C Range: 0 - 360DEG
C Interval: 30.0DEG
Test Speed: HIGH
Temperature:25.3℃
Operators:
Test Date:2025-02-15

γ Range: 0 - 180DEG
γ Interval: 1.0DEG
Test System:EVERFINE GO-2000B_V1 SYSTEM V2.00.488
Humidity:65.0%
Test Distance:6.360m [K=1.0000]
Remarks:

ISOLUX DIAGRAM

Test:U:24.00V I:0.4258A P:10.22W PF:1.000 Freq:0Hz Lamp Flux:656.722x1 lm		
NAME: SF18-24V-3528-144-2700K-80	TYPE:	WEIGHT:
SPEC.:	DIM.: Length=1m	SERIAL No.:
MFR.: OLympia lighting	SUR.:	Shielding Angle:



C Range: 0 - 360DEG
C Interval: 30.0DEG
Test Speed: HIGH
Temperature:25.3℃
Operators:
Test Date:2025-02-15

γ Range: 0 - 180DEG
γ Interval: 1.0DEG
Test System:EVERFINE GO-2000B_V1 SYSTEM V2.00.488
Humidity:65.0%
Test Distance:6.360m [K=1.0000]
Remarks:

LED Avg.L Report

Test:U:24.00V I:0.4258A P:10.22W PF:1.000 Freq:0Hz Lamp Flux:656.722x1 lm		
NAME: SF18-24V-3528-144-2700K-80	TYPE:	WEIGHT:
SPEC.:	DIM.: Length=1m	SERIAL No.:
MFR.: OLympia lighting	SUR.:	Shielding Angle:

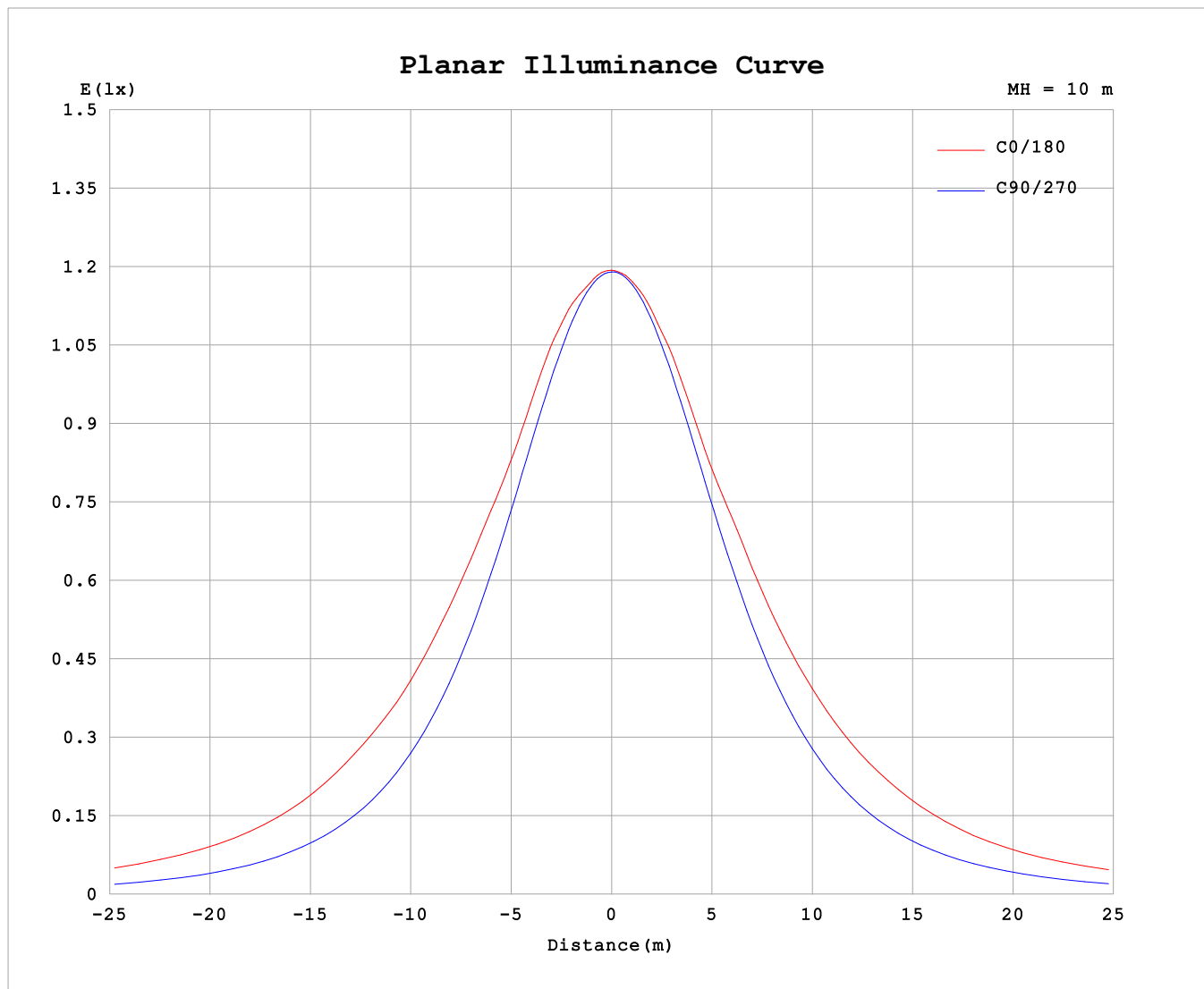
AvgL	cd/m2
L_0~180 (65) av	13882
L_0~180 (75) av	19373
L_0~180 (85) av	47196
L_90~270 (65) av	6249
L_90~270 (75) av	6168
L_90~270 (85) av	6890
L_45 (65) av	10417
L_45 (75) av	13864
L_45 (85) av	30676

Standard: GB/T 29293-2012

C Range: 0 - 360DEG
C Interval: 30.0DEG
Test Speed: HIGH
Temperature:25.3℃
Operators:
Test Date:2025-02-15

γ Range: 0 - 180DEG
γ Interval: 1.0DEG
Test System:EVERFINE GO-2000B_V1 SYSTEM V2.00.488
Humidity:65.0%
Test Distance:6.360m [K=1.0000]
Remarks:

Planar Illuminance Curve



C Range: 0 - 360DEG
C Interval: 30.0DEG
Test Speed: HIGH
Temperature: 25.3 °C
Operators:
Test Date: 2025-02-15

γ Range: 0 - 180DEG
 γ Interval: 1.0DEG
Test System: EVERFINE GO-2000B_V1 SYSTEM V2.00.488
Humidity: 65.0%
Test Distance: 6.360m [K=1.0000]
Remarks:

LUMINOUS DISTRIBUTION INTENSITY DATA

Test:U:24.00V I:0.4258A P:10.22W PF:1.000 Freq:0Hz Lamp Flux:656.722x1 lm		
NAME: SF18-24V-3528-144-2700K-80	TYPE:	WEIGHT:
SPEC.:	DIM.: Length=1m	SERIAL No.:
MFR.: OLYMPIA lighting	SUR.:	Shielding Angle:

Table--1

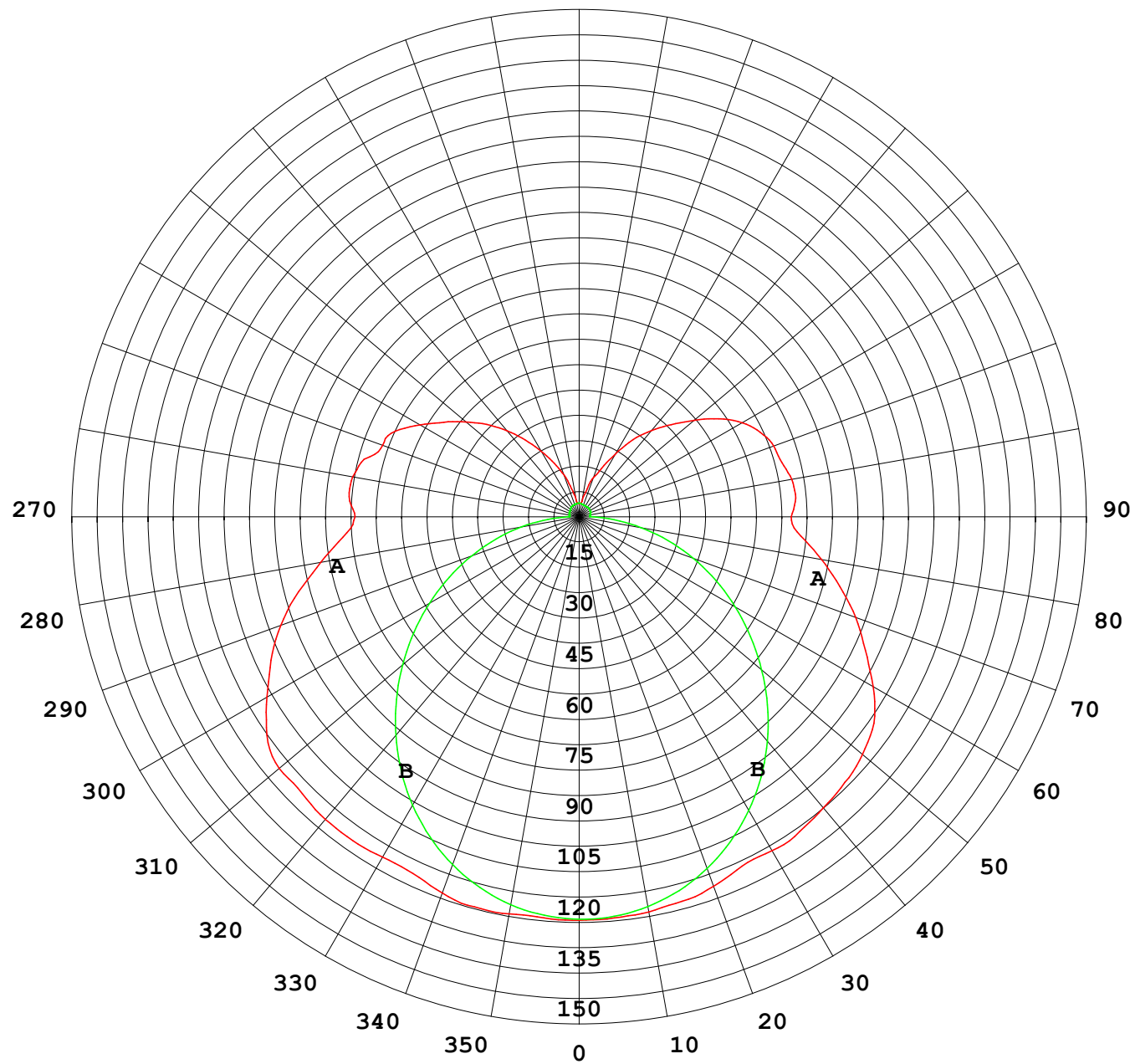
UNIT: cd

C (DEG) γ (DEG)	0	30	60	90	120	150	180	210	240	270	300	330							
0	119	119	119	119	119	119	119	119	119	119	119	119							
5	119	119	119	118	118	119	119	119	119	119	119	119							
10	119	118	117	117	117	118	118	118	118	117	118	118							
15	119	118	115	114	115	116	118	117	115	114	115	118							
20	118	117	112	110	111	115	116	115	112	111	113	117							
25	116	114	109	104	107	112	114	112	109	106	110	115							
30	116	111	105	98.6	103	109	114	110	105	100	106	112							
35	117	110	99.4	91.8	97.2	107	113	108	99.4	93.9	101	110							
40	117	108	93.0	84.4	91.0	104	112	106	93.5	86.7	94.6	109							
45	116	106	86.3	76.5	84.0	101	111	103	86.8	78.8	87.9	106							
50	116	103	79.4	68.2	76.8	97.5	109	99.8	79.9	70.5	80.9	103							
55	112	100	71.8	59.7	68.8	93.7	106	96.1	71.9	62.0	73.2	99.9							
60	106	96.1	65.0	51.1	61.6	88.5	100	90.8	65.0	53.4	66.0	95.9							
65	100	89.6	58.7	42.5	55.0	82.8	93.3	85.0	58.7	44.7	59.4	89.7							
70	93.7	82.8	52.5	33.9	48.5	76.3	86.9	78.4	52.2	35.9	52.7	82.6							
75	85.7	75.7	46.4	25.4	42.0	68.2	79.7	70.0	45.6	27.2	46.1	75.5							
80	77.4	67.1	39.8	17.2	34.9	60.5	72.6	62.2	38.2	18.7	39.3	66.8							
85	70.1	59.1	32.5	9.32	27.4	53.6	65.7	55.1	30.2	10.5	31.9	58.4							
90	66.2	53.3	26.5	3.01	22.6	49.8	62.6	50.6	24.5	3.32	25.2	52.3							
95	68.2	54.6	26.3	3.01	23.0	51.9	64.2	51.4	24.2	3.20	24.8	53.3							
100	67.9	56.5	22.0	3.02	22.3	53.8	63.7	53.0	23.5	3.32	21.1	54.9							
105	65.7	53.6	20.0	3.09	22.0	54.1	62.0	53.1	23.5	3.44	18.3	51.6							
110	61.8	51.7	19.8	3.16	22.1	51.6	61.1	51.9	24.4	3.57	18.6	47.7							
115	59.9	47.2	20.4	3.23	22.2	48.6	59.0	49.6	24.5	3.67	19.1	45.7							
120	54.3	42.3	18.9	3.30	20.9	44.3	55.6	45.9	22.9	3.72	18.1	39.0							
125	48.7	39.3	15.3	3.34	18.9	39.8	50.4	41.0	20.9	3.80	15.8	36.3							
130	43.6	35.5	12.3	3.41	16.6	35.6	44.3	36.7	18.1	3.84	13.9	30.1							
135	38.6	28.6	9.91	3.58	14.4	31.2	38.5	32.2	15.7	3.85	11.6	27.6							
140	33.1	23.7	8.12	3.74	12.4	26.9	33.3	27.8	13.5	3.78	9.55	22.4							
145	27.7	18.1	6.66	3.81	10.8	21.9	27.8	22.7	11.5	3.72	7.73	17.4							
150	22.3	13.4	5.24	3.86	8.70	17.9	21.4	18.3	9.46	3.72	6.37	13.2							
155	17.5	8.97	4.64	3.87	6.83	14.6	15.8	14.8	7.25	3.73	5.47	10.1							
160	13.2	5.73	4.83	3.93	5.38	10.9	12.3	11.1	5.59	3.79	5.17	7.35							
165	8.58	4.50	4.80	3.98	4.59	7.07	7.66	7.11	4.51	3.86	4.78	5.62							
170	4.73	4.46	4.53	4.04	4.37	4.98	4.46	4.94	4.26	3.93	4.60	4.93							
175	3.96	4.39	4.49	4.08	4.15	4.34	3.95	4.26	4.03	4.01	4.56	4.61							
180	3.87	4.11	4.12	4.08	4.23	4.26	3.85	4.11	4.10	4.08	4.24	4.28							

C Range: 0 - 360DEG
C Interval: 30.0DEG
Test Speed: HIGH
Temperature:25.3℃
Operators:
Test Date:2025-02-15

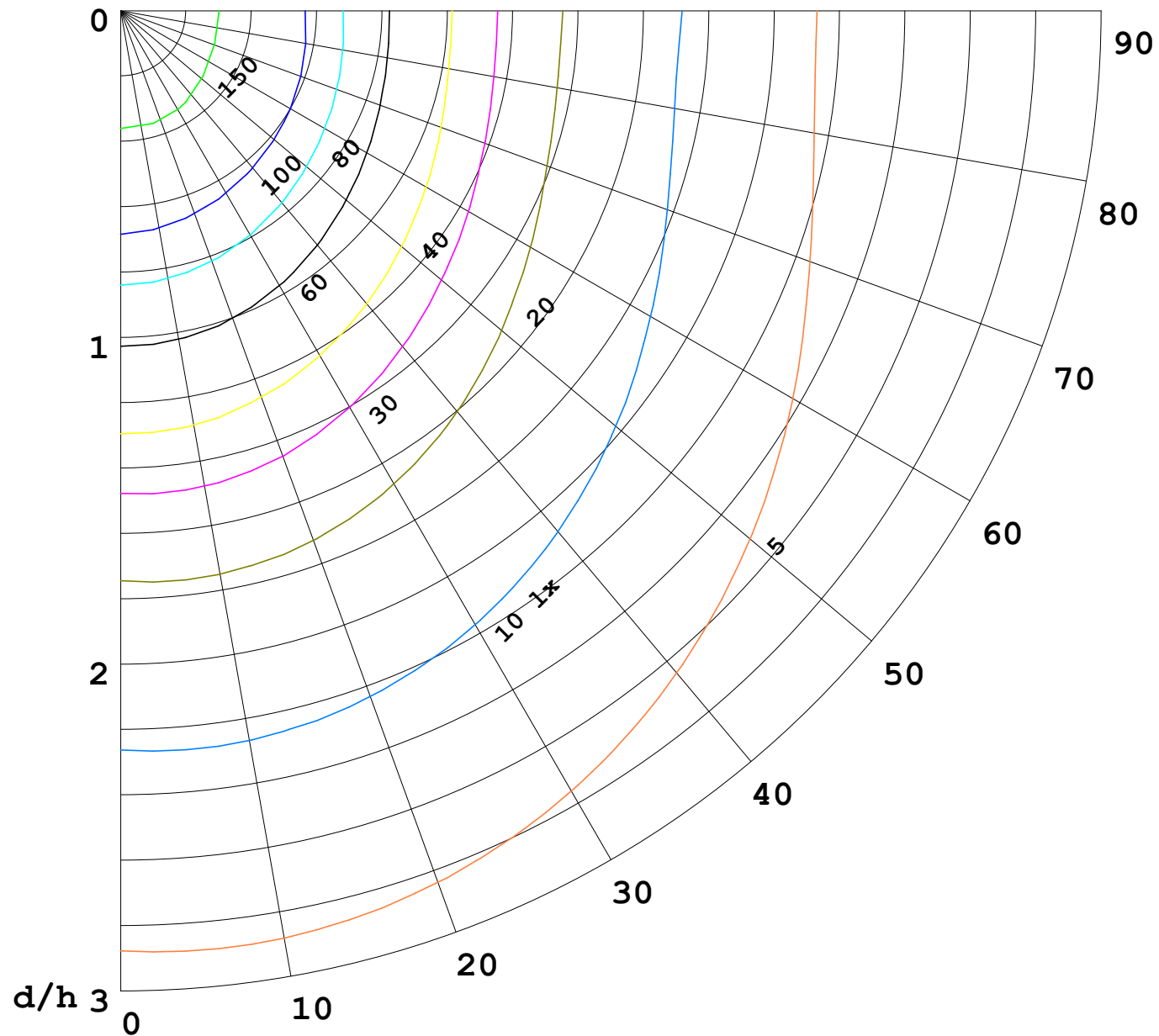
γ Range: 0 - 180DEG
γ Interval: 1.0DEG
Test System:EVERFINE GO-2000B_V1 SYSTEM V2.00.488
Humidity:65.0%
Test Distance:6.360m [K=1.0000]
Remarks:

I (cd)



1000 lm

$\kappa = 1$



F = 1000 lm
 K = 0.7
 Hcc = 0.8 m
 Hfc = 0.0 m
 Eave = 100 lx

	Pcc	Pw	Pfc
—————	70	50	30
—————	50	30	20

