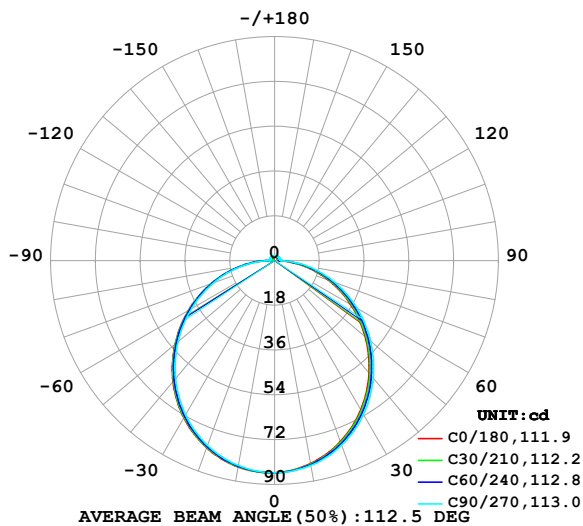


LUMINAIRE PHOTOMETRIC TEST REPORT

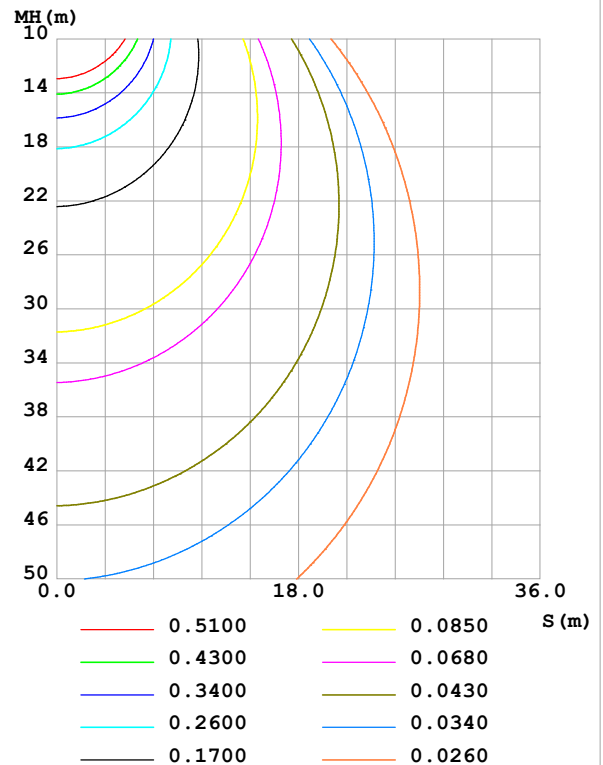
Test:U:24.00V I:0.5284A P:12.68W PF:1.000 Freq:0Hz Lamp Flux:261.591x1 lm		
NAME: SF17-24v-5050-72-RGB-ALL	TYPE:	WEIGHT:
SPEC.:	DIM.: Length=1m	SERIAL No.:
MFR.: OLympia lighting	SUR.:	Shielding Angle:

DATA OF LAMP		PHOTOMETRIC DATA Eff: 20.63 lm/W			
MODEL	5050	Imax (cd)	85.30	S/MH(C0/180)	1.27
NOMINAL POWER(W)	13	LOR(%)	100.0	S/MH(C90/270)	1.25
RATED VOLTAGE(V)	24	TOTAL FLUX(lm)	261.62	η UP,DN(C0-180)	2.2,47.3
NOMINAL FLUX(lm)	261.591	CIE CLASS	DIRECT	η UP,DN(C180-360)	2.1,48.4
LAMPS INSIDE	1	η up (%)	4.3	CIBSE SHR NOM	1.25
TEST VOLTAGE(V)		η down (%)	95.7	CIBSE SHR MAX	1.35

LUMINOUS INTENSITY DISTRIBUTION DIAGRAM



C0 PLANE ISOLUX DIAGRAM (UNIT:lx)



C Range: 0 - 360DEG
C Interval: 30.0DEG
Test Speed: HIGH
Temperature:25.3℃
Operators:
Test Date:2025-03-11

γ Range: 0 - 180DEG
 γ Interval: 1.0DEG
Test System:EVERFINE GO-2000B_V1 SYSTEM V2.00.488
Humidity:65.0%
Test Distance:6.360m [K=1.0000]
Remarks:

ZONAL FLUX DIAGRAM

ZONAL FLUX DIAGRAM:

γ	C0	C45	C90	C135	C180	C225	C270	C315	γ	Φ zone	Φ total	%lum,lamp
10	82.88	83.22	83.66	84.00	84.25	84.04	83.66	83.25	0- 10	8.060	8.060	3.08,3.08
20	77.41	78.03	78.92	79.63	80.05	79.70	79.04	78.17	10- 20	23.03	31.09	11.9,11.9
30	69.26	70.13	71.44	72.43	73.00	72.56	71.61	70.38	20- 30	34.76	65.85	25.2,25.2
40	59.06	60.11	61.70	62.88	63.58	63.04	61.90	60.47	30- 40	41.74	107.6	41.1,41.1
50	47.52	48.69	50.37	51.59	52.31	51.82	50.65	49.11	40- 50	43.27	150.9	57.7,57.7
60	35.31	36.53	38.19	39.28	39.97	39.56	38.49	36.99	50- 60	39.55	190.4	72.8,72.8
70	23.04	24.21	25.75	26.59	27.18	26.93	26.06	24.66	60- 70	31.50	221.9	84.8,84.8
80	11.04	12.10	13.51	14.06	14.54	14.43	13.73	12.51	70- 80	20.46	242.4	92.6,92.6
90	1.907	2.142	2.695	2.577	2.899	2.831	2.112	2.298	80- 90	8.051	250.4	95.7,95.7
100	1.531	1.832	2.157	1.540	0.8838	1.603	2.081	1.913	90-100	1.975	252.4	96.5,96.5
110	1.505	1.777	2.099	1.633	1.022	1.663	2.109	1.856	100-110	1.806	254.2	97.2,97.2
120	1.416	1.747	2.072	1.711	1.169	1.712	2.106	1.792	110-120	1.709	255.9	97.8,97.8
130	1.474	1.805	2.045	1.769	1.316	1.757	2.100	1.808	120-130	1.564	257.5	98.4,98.4
140	1.609	1.845	2.027	1.830	1.468	1.802	2.078	1.836	130-140	1.387	258.9	98.9,99
150	1.727	1.890	2.023	1.890	1.621	1.843	2.067	1.851	140-150	1.156	260.0	99.4,99.4
160	1.839	1.933	2.018	1.946	1.773	1.877	2.057	1.880	150-160	0.8743	260.9	99.7,99.7
170	1.943	1.968	2.021	1.983	1.920	1.934	1.988	1.932	160-170	0.5481	261.4	99.9,99.9
180	1.980	2.001	2.025	2.013	1.983	2.001	2.022	2.012	170-180	0.1887	261.6	100,100
DEG	LUMINOUS INTENSITY:cd									UNIT:lm		

Conical surface Flux(90deg): 129.37 lm

%lum = 49.4%

%lamp = 49.5%

Conical surface Flux(130deg): 207.38 lm

%lum = 79.3%

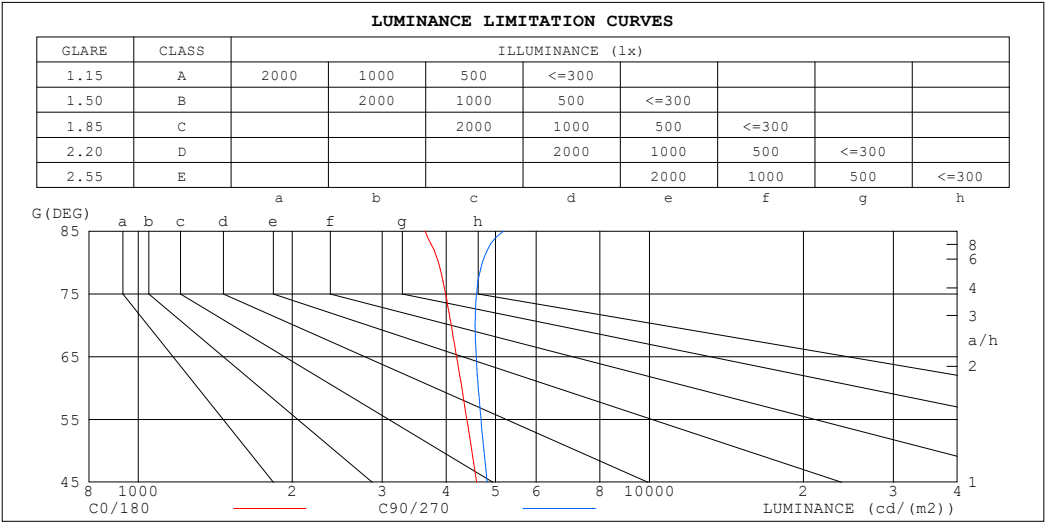
%lamp = 79.3%

C Range: 0 - 360DEG
 C Interval: 30.0DEG
 Test Speed: HIGH
 Temperature:25.3℃
 Operators:
 Test Date:2025-03-11

γ Range: 0 - 180DEG
 γ Interval: 1.0DEG
 Test System:EVERFINE GO-2000B_V1 SYSTEM V2.00.488
 Humidity:65.0%
 Test Distance:6.360m [K=1.0000]
 Remarks:

LUMINANCE LIMITATION CURVES

Test:U:24.00V I:0.5284A P:12.68W PF:1.000 Freq:0Hz Lamp Flux:261.591x1 lm		
NAME: SF17-24v-5050-72-RGB-ALL	TYPE:	WEIGHT:
SPEC.:	DIM.: Length=1m	SERIAL No.:
MFR.: OLympia lighting	SUR.:	Shielding Angle:



LUMINANCE cd/(m2)		
G (DEG)	C0/180	C90/270
85	3638	5188
80	3864	4711
75	3993	4588
70	4094	4560
65	4194	4582
60	4292	4625
55	4392	4681
50	4493	4745
45	4590	4811

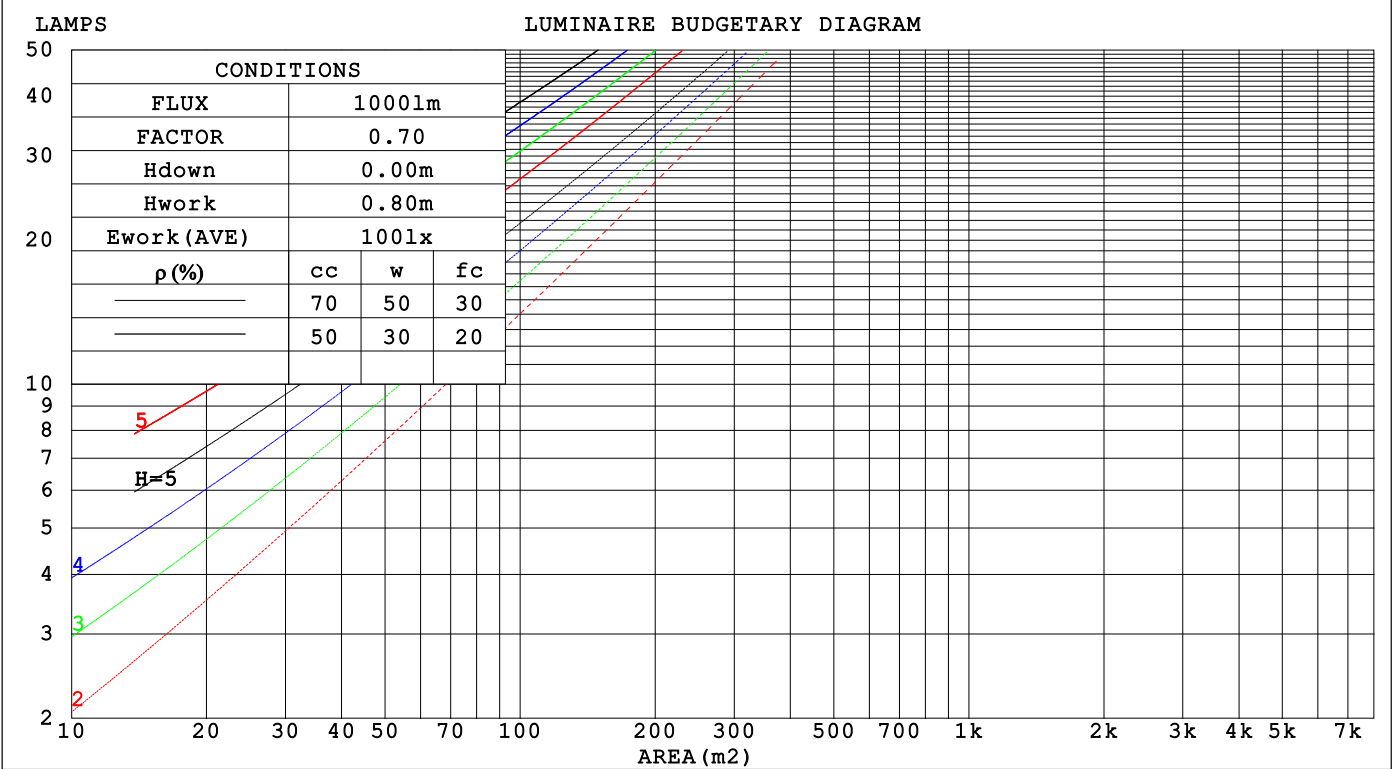
C Range: 0 - 360DEG
C Interval: 30.0DEG
Test Speed: HIGH
Temperature:25.3℃
Operators:
Test Date:2025-03-11

γ Range: 0 - 180DEG
γ Interval: 1.0DEG
Test System:EVERFINE GO-2000B_V1 SYSTEM V2.00.488
Humidity:65.0%
Test Distance:6.360m [K=1.0000]
Remarks:

CU AND LUMINAIRE BUDGETARY ESTIMATE DIAGRAM

Test:U:24.00V I:0.5284A P:12.68W PF:1.000 Freq:0Hz		
Lamp Flux:261.591x1 lm		
NAME: SF17-24v-5050-72-RGB-ALL	TYPE:	WEIGHT:
SPEC.:	DIM.: Length=1m	SERIAL No.:
MFR.: OLYMPIA lighting	SUR.:	Shielding Angle:

pcc	80%			70%			50%			30%			10%			0
pw	50%	30%	10%	50%	30%	10%	50%	30%	10%	50%	30%	10%	50%	30%	10%	0
pfc	20%			20%			20%			20%			20%			0
RCR	RCR:Room Cavity Ratio															



C Range: 0 - 360DEG
C Interval: 30.0DEG
Test Speed: HIGH
Temperature:25.3℃
Operators:
Test Date:2025-03-11

γ Range: 0 - 180DEG
γ Interval: 1.0DEG
Test System:EVERFINE GO-2000B_V1 SYSTEM V2.00.488
Humidity:65.0%
Test Distance:6.360m [K=1.0000]
Remarks:

WEC AND CCEC

Test:U:24.00V I:0.5284A P:12.68W PF:1.000 Freq:0Hz Lamp Flux:261.591x1 lm		
NAME: SF17-24v-5050-72-RGB-ALL	TYPE:	WEIGHT:
SPEC.:	DIM.: Length=1m	SERIAL No.:
MFR.: OLympia lighting	SUR.:	Shielding Angle:

pcc	80%			70%			50%			30%			10%			0														
pw	50%	30%	10%	50%	30%	10%	50%	30%	10%	50%	30%	10%	50%	30%	10%	0														
pfc	20%			20%			20%			20%			20%			0														
RCR	RCR:Room Cavity Ratio															Wall Exitance Coefficients(WEC)														
0.0																														
1.0	.327	.186	.059	.318	.182	.058	.303	.174	.055	.288	.166	.053	.275	.159	.051															
2.0	.301	.165	.051	.294	.162	.050	.280	.156	.048	.267	.150	.047	.255	.144	.045															
3.0	.276	.147	.044	.269	.144	.043	.257	.139	.042	.245	.134	.041	.234	.130	.040															
4.0	.253	.131	.039	.247	.129	.038	.236	.125	.037	.225	.121	.037	.216	.117	.036															
5.0	.233	.119	.034	.228	.117	.034	.218	.113	.033	.208	.110	.033	.199	.107	.032															
6.0	.215	.108	.031	.211	.106	.031	.202	.103	.030	.193	.100	.030	.185	.098	.029															
7.0	.200	.099	.028	.196	.097	.028	.188	.095	.027	.180	.092	.027	.173	.090	.026															
8.0	.186	.091	.026	.183	.090	.025	.175	.088	.025	.168	.085	.025	.162	.083	.024															
9.0	.174	.084	.024	.171	.083	.023	.164	.081	.023	.158	.079	.023	.152	.077	.022															
10.0	.164	.079	.022	.161	.078	.022	.155	.076	.021	.149	.074	.021	.143	.072	.021															

pcc	80%			70%			50%			30%			10%			0
pw	50%	30%	10%	50%	30%	10%	50%	30%	10%	50%	30%	10%	50%	30%	10%	0
pfc	20%			20%			20%			20%			20%			0
RCR	RCR:Room Cavity Ratio						Ceiling Cavity Exitance Coefficients (CCEC)									
0.0	.223	.223	.223	.191	.191	.191	.130	.130	.130	.075	.075	.075	.024	.024	.024	
1.0	.214	.189	.166	.183	.162	.143	.125	.112	.099	.072	.065	.057	.023	.021	.019	
2.0	.207	.165	.130	.177	.142	.112	.121	.098	.078	.070	.057	.046	.022	.018	.015	
3.0	.199	.148	.107	.171	.127	.093	.117	.088	.065	.068	.052	.038	.022	.017	.013	
4.0	.191	.135	.091	.164	.116	.079	.113	.081	.056	.065	.047	.033	.021	.015	.011	
5.0	.184	.124	.080	.158	.108	.070	.109	.075	.049	.063	.044	.029	.020	.014	.010	
6.0	.176	.116	.073	.152	.100	.063	.105	.070	.045	.061	.041	.027	.020	.014	.009	
7.0	.170	.109	.067	.146	.095	.058	.101	.066	.041	.059	.039	.025	.019	.013	.008	
8.0	.163	.103	.062	.140	.090	.054	.097	.063	.039	.057	.037	.023	.018	.012	.008	
9.0	.157	.099	.059	.135	.085	.051	.094	.060	.037	.055	.035	.022	.018	.012	.007	
10.0	.151	.094	.056	.130	.082	.049	.090	.058	.035	.053	.034	.021	.017	.011	.007	

C Range: 0 - 360DEG
C Interval: 30.0DEG
Test Speed: HIGH
Temperature:25.3℃
Operators:
Test Date:2025-03-11

γ Range: 0 - 180DEG
γ Interval: 1.0DEG
Test System:EVERFINE GO-2000B_V1 SYSTEM V2.00.488
Humidity:65.0%
Test Distance:6.360m [K=1.0000]
Remarks:

UGR(Unified Glare Rating) Table

Test:U:24.00V I:0.5284A P:12.68W PF:1.000 Freq:0Hz Lamp Flux:261.59lx1 lm										
NAME: SF17-24v-5050-72-RGB-ALL					TYPE:			WEIGHT:		
SPEC.:					DIM.: Length=1m			SERIAL No.:		
MFR.: OLympia lighting					SUR.:			Shielding Angle:		
ceiling/cavity	0.7	0.7	0.5	0.5	0.3	0.7	0.7	0.5	0.5	0.3
walls	0.5	0.3	0.5	0.3	0.3	0.5	0.3	0.5	0.3	0.3
working plane	0.2	0.2	0.2	0.2	0.2	0.2	0.2	0.2	0.2	0.2
Room dimensions	Viewed crosswise					Viewed endwise				
x = 2H y = 2H	22.1	23.6	22.5	23.9	24.2	22.4	23.9	22.7	24.2	24.5
3H	23.7	25.1	24.1	25.4	25.7	24.1	25.5	24.5	25.8	26.1
4H	24.4	25.7	24.8	26.1	26.4	24.9	26.2	25.3	26.5	26.9
6H	25.0	26.2	25.4	26.6	26.9	25.6	26.8	26.0	27.1	27.5
8H	25.2	26.4	25.6	26.7	27.1	25.8	27.0	26.2	27.4	27.8
12H	25.3	26.4	25.7	26.8	27.2	26.1	27.2	26.5	27.6	28.0
4H 2H	22.8	24.1	23.2	24.4	24.8	23.0	24.3	23.4	24.6	25.0
3H	24.6	25.7	25.0	26.1	26.5	24.9	26.0	25.3	26.4	26.8
4H	25.4	26.5	25.9	26.9	27.3	25.8	26.9	26.3	27.3	27.7
6H	26.1	27.0	26.6	27.5	27.9	26.6	27.6	27.1	28.0	28.5
8H	26.4	27.2	26.8	27.7	28.2	27.0	27.8	27.5	28.3	28.8
12H	26.6	27.4	27.1	27.8	28.3	27.3	28.1	27.8	28.5	29.0
8H 4H	25.8	26.6	26.2	27.1	27.6	26.1	27.0	26.6	27.4	27.9
6H	26.6	27.4	27.1	27.8	28.4	27.1	27.8	27.6	28.3	28.8
8H	27.0	27.6	27.5	28.1	28.7	27.6	28.2	28.1	28.7	29.3
12H	27.3	27.8	27.8	28.4	28.9	28.0	28.5	28.5	29.1	29.6
12H 4H	25.8	26.6	26.3	27.1	27.6	26.1	26.9	26.6	27.4	27.9
6H	26.7	27.4	27.3	27.9	28.4	27.2	27.8	27.7	28.3	28.9
8H	27.2	27.7	27.7	28.2	28.8	27.7	28.3	28.2	28.8	29.3
Variations with the observer position at spacings(CIE Pub.117):										
S = 1.0H	+ 0.1 / - 0.2					+ 0.1 / - 0.2				
1.5H	+ 0.2 / - 0.3					+ 0.2 / - 0.3				
2.0H	+ 0.1 / - 0.3					+ 0.1 / - 0.3				

CIE Pub.117, 261.6 lm Total Lamp Luminous Flux Correct (8log(F/F0) = -4.7)
Area: 0.0165 m2

C Range: 0 - 360DEG
C Interval: 30.0DEG
Test Speed: HIGH
Temperature:25.3℃
Operators:
Test Date:2025-03-11

γ Range: 0 - 180DEG
γ Interval: 1.0DEG
Test System:EVERFINE GO-2000B_V1 SYSTEM V2.00.488
Humidity:65.0%
Test Distance:6.360m [K=1.0000]
Remarks:

UTILIZATION FACTORS TABLE

Test:U:24.00V I:0.5284A P:12.68W PF:1.000 Freq:0Hz Lamp Flux:261.591x1 lm		
NAME: SF17-24v-5050-72-RGB-ALL	TYPE:	WEIGHT:
SPEC.:	DIM.: Length=1m	SERIAL No.:
MFR.: OLympia lighting	SUR.:	Shielding Angle:

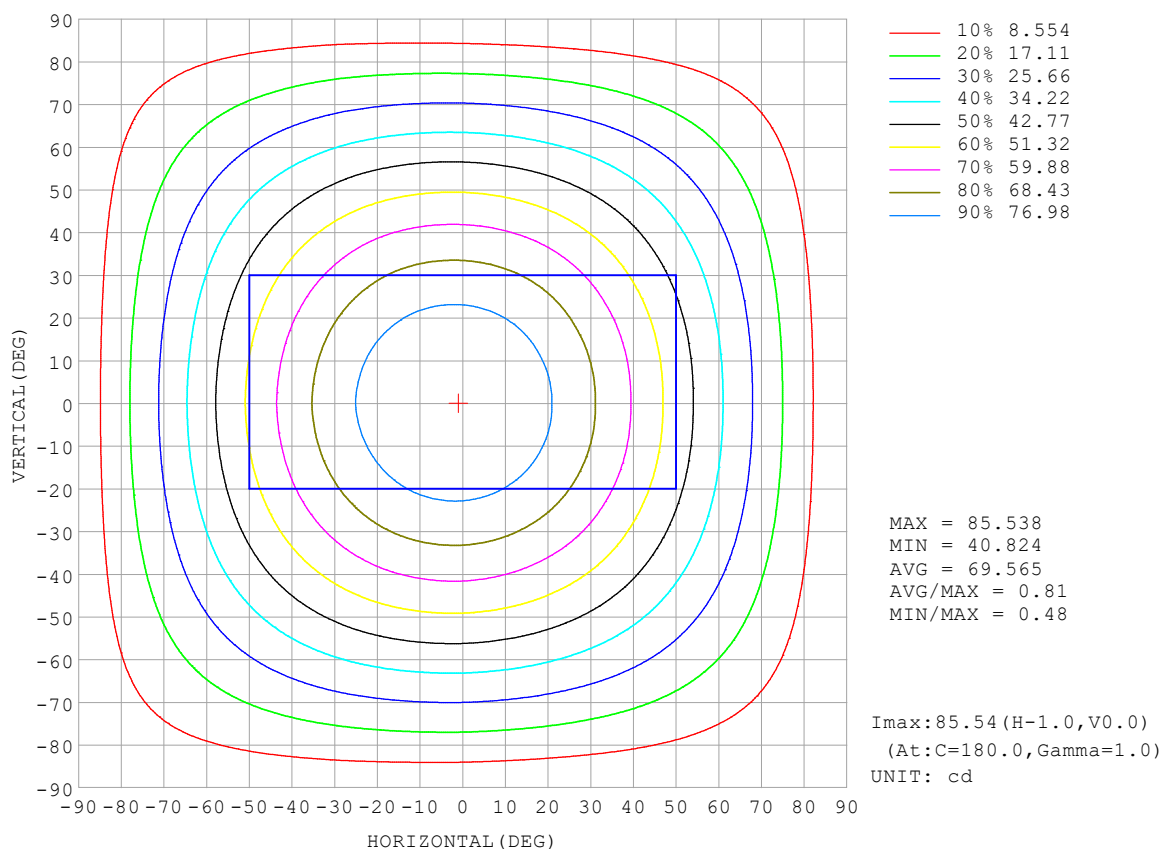
REFLECTANCE										
Ceiling	0.8	0.8	0.8	0.7	0.7	0.7	0.5	0.5	0.5	0
Walls	0.7	0.5	0.3	0.7	0.5	0.3	0.7	0.5	0.3	0
Working plane	0.2	0.2	0.2	0.2	0.2	0.2	0.2	0.2	0.2	0
ROOM INDEX	UTILIZATION FACTORS (PERCENT) $k(RI) \times RCR = 5$									
$k = 0.60$	55	44	37	55	43	37	53	43	36	30
0.80	65	53	46	64	53	46	62	52	45	38
1.00	74	62	54	72	61	54	69	62	53	46
1.25	81	70	62	79	69	62	76	67	61	53
1.50	86	75	68	84	74	67	80	72	66	58
2.00	92	83	77	90	82	76	86	79	74	65
2.50	97	88	82	94	87	81	90	83	78	69
3.00	100	93	87	97	91	85	93	87	83	73
4.00	104	98	93	101	96	91	96	92	88	78
5.00	107	101	97	104	99	95	99	95	91	81
ROOM INDEX	UF (total)									Direct
According to DIN EN 13032-2 2004			Suspended					SHRNOM = 1.25		

C Range: 0 - 360DEG
 C Interval: 30.0DEG
 Test Speed: HIGH
 Temperature: 25.3°C
 Operators:
 Test Date: 2025-03-11

γ Range: 0 - 180DEG
 γ Interval: 1.0DEG
 Test System: EVERFINE GO-2000B_V1 SYSTEM V2.00.488
 Humidity: 65.0%
 Test Distance: 6.360m [K=1.0000]
 Remarks:

ISOCANDELA DIAGRAM

Test:U:24.00V I:0.5284A P:12.68W PF:1.000 Freq:0Hz Lamp Flux:261.591x1 lm		
NAME: SF17-24v-5050-72-RGB-ALL	TYPE:	WEIGHT:
SPEC.:	DIM.: Length=1m	SERIAL No.:
MFR.: OLympia lighting	SUR.:	Shielding Angle:

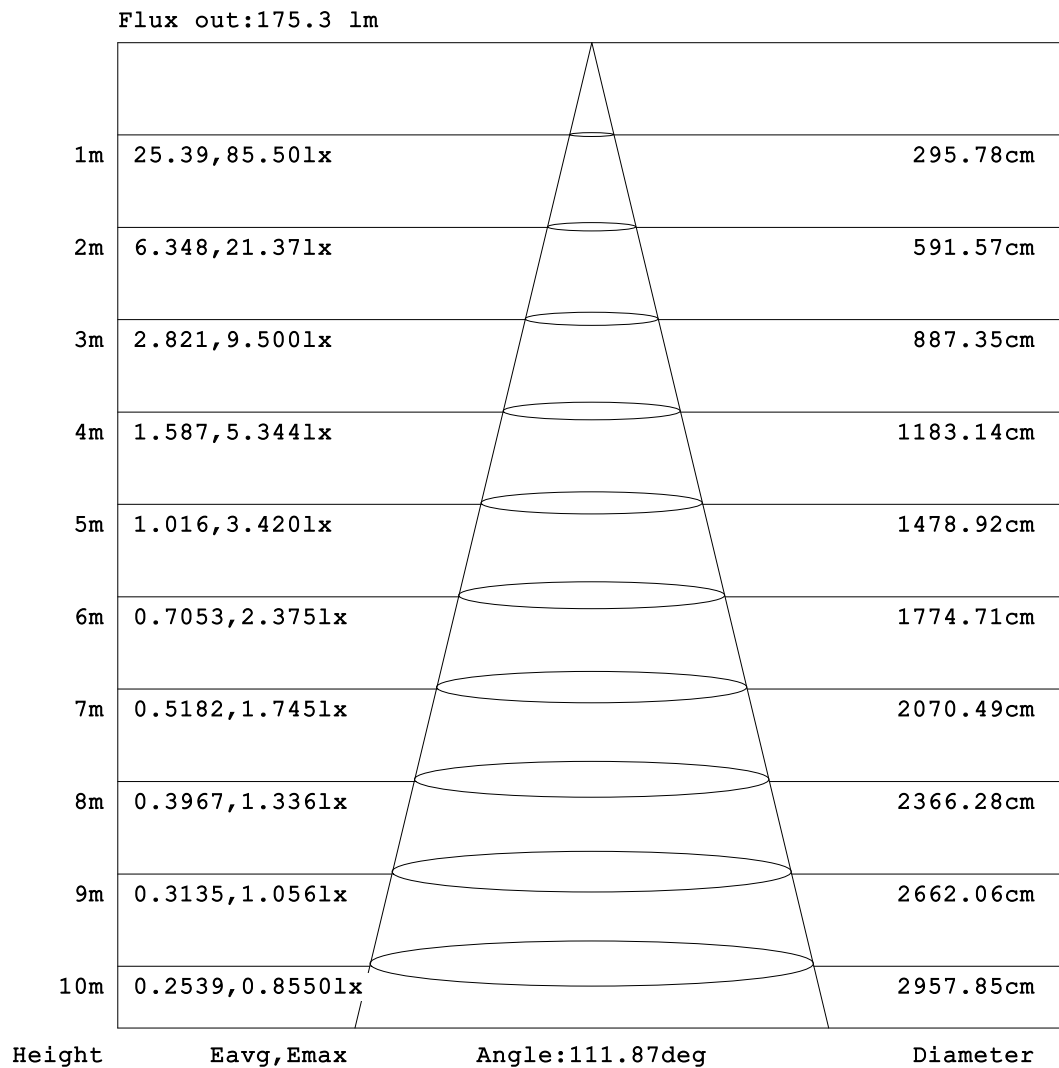


C Range: 0 - 360DEG
C Interval: 30.0DEG
Test Speed: HIGH
Temperature:25.3℃
Operators:
Test Date:2025-03-11

γ Range: 0 - 180DEG
γ Interval: 1.0DEG
Test System:EVERFINE GO-2000B_V1 SYSTEM V2.00.488
Humidity:65.0%
Test Distance:6.360m [K=1.0000]
Remarks:

AAI Figure

Test:U:24.00V I:0.5284A P:12.68W PF:1.000 Freq:0Hz Lamp Flux:261.591x1 lm		
NAME: SF17-24v-5050-72-RGB-ALL	TYPE:	WEIGHT:
SPEC.:	DIM.: Length=1m	SERIAL No.:
MFR.: OLympia lighting	SUR.:	Shielding Angle:



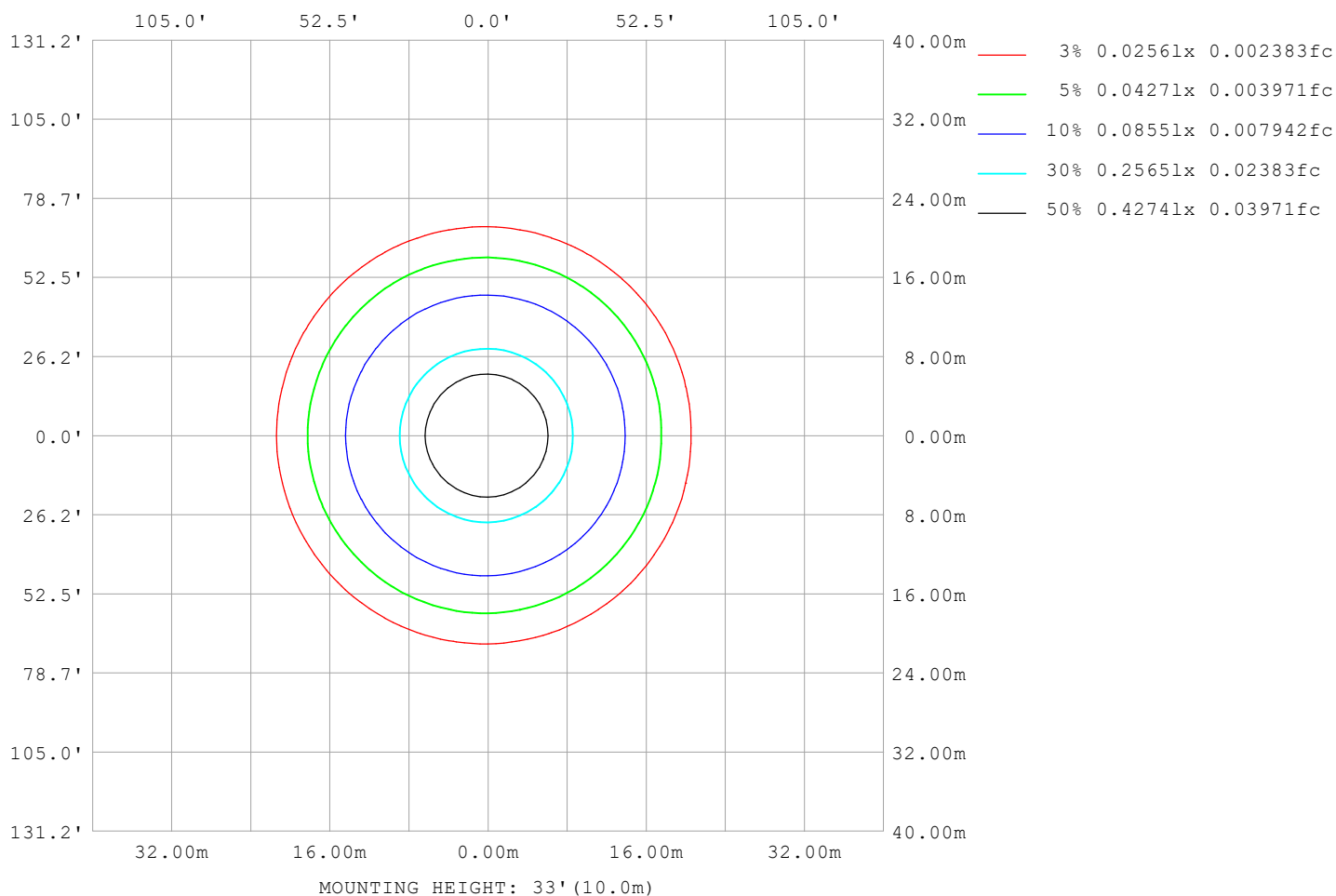
Note: The Curves indicate the illuminated area and the average illumination when the luminaire is at different distance.

C Range: 0 - 360DEG
C Interval: 30.0DEG
Test Speed: HIGH
Temperature: 25.3℃
Operators:
Test Date: 2025-03-11

γ Range: 0 - 180DEG
γ Interval: 1.0DEG
Test System: EVERFINE GO-2000B_V1 SYSTEM V2.00.488
Humidity: 65.0%
Test Distance: 6.360m [K=1.0000]
Remarks:

ISOLUX DIAGRAM

Test:U:24.00V I:0.5284A P:12.68W PF:1.000 Freq:0Hz Lamp Flux:261.59lx1 lm		
NAME: SF17-24v-5050-72-RGB-ALL	TYPE:	WEIGHT:
SPEC.:	DIM.: Length=1m	SERIAL No.:
MFR.: OLympia lighting	SUR.:	Shielding Angle:



C Range: 0 - 360DEG
C Interval: 30.0DEG
Test Speed: HIGH
Temperature: 25.3°C
Operators:
Test Date: 2025-03-11

γ Range: 0 - 180DEG
γ Interval: 1.0DEG
Test System: EVERFINE GO-2000B_V1 SYSTEM V2.00.488
Humidity: 65.0%
Test Distance: 6.360m [K=1.0000]
Remarks:

LED Avg.L Report

Test:U:24.00V I:0.5284A P:12.68W PF:1.000 Freq:0Hz Lamp Flux:261.591x1 lm		
NAME: SF17-24v-5050-72-RGB-ALL	TYPE:	WEIGHT:
SPEC.:	DIM.: Length=1m	SERIAL No.:
MFR.: OLympia lighting	SUR.:	Shielding Angle:

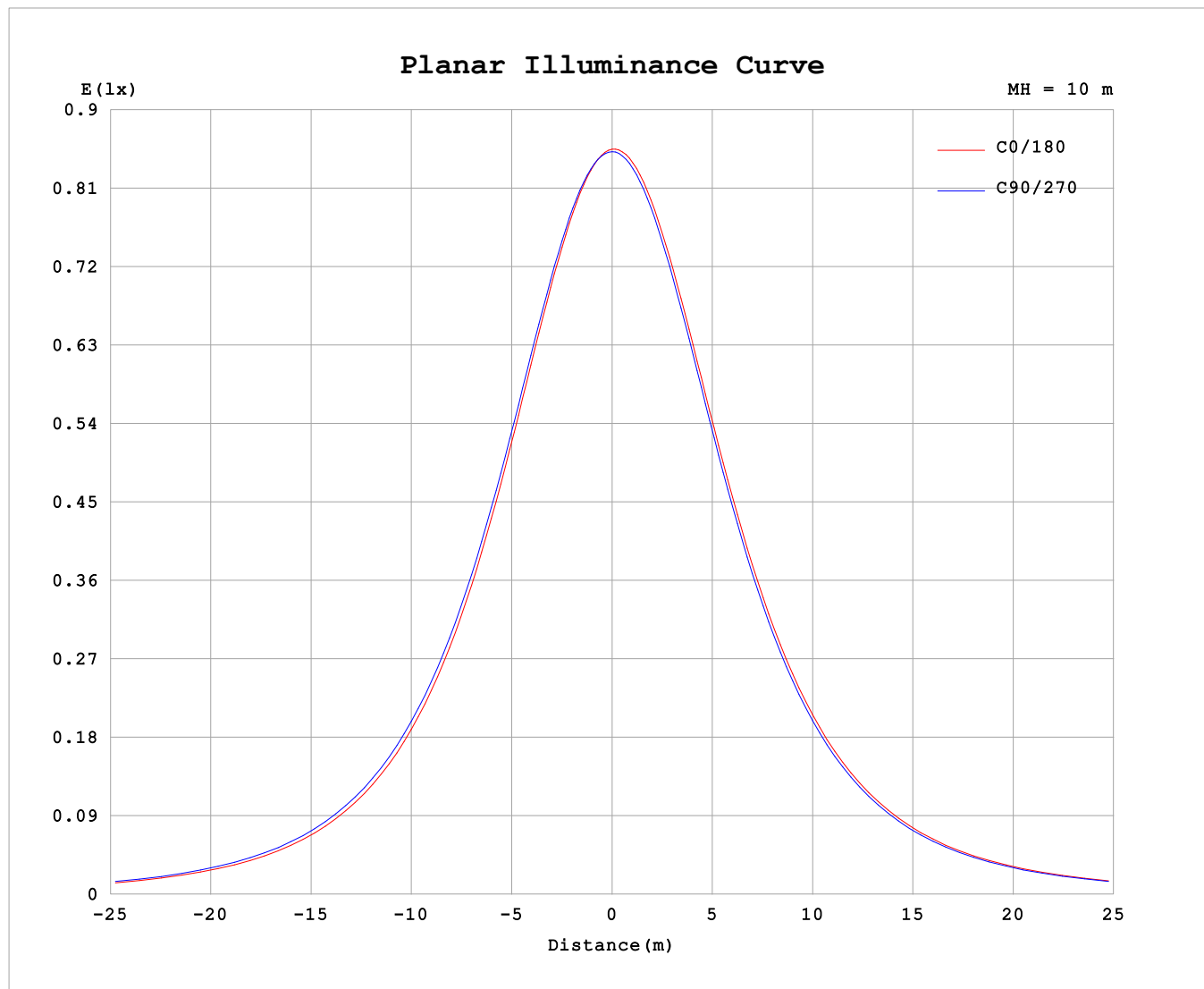
AvgL	cd/m2
L_0~180 (65) av	4500
L_0~180 (75) av	4429
L_0~180 (85) av	4729
L_90~270 (65) av	4608
L_90~270 (75) av	4622
L_90~270 (85) av	5264
L_45 (65) av	4570
L_45 (75) av	4546
L_45 (85) av	5042

Standard: GB/T 29293-2012

C Range: 0 - 360DEG
C Interval: 30.0DEG
Test Speed: HIGH
Temperature:25.3℃
Operators:
Test Date:2025-03-11

γ Range: 0 - 180DEG
γ Interval: 1.0DEG
Test System:EVERFINE GO-2000B_V1 SYSTEM V2.00.488
Humidity:65.0%
Test Distance:6.360m [K=1.0000]
Remarks:

Planar Illuminance Curve



C Range: 0 - 360DEG
C Interval: 30.0DEG
Test Speed: HIGH
Temperature: 25.3 °C
Operators:
Test Date: 2025-03-11

γ Range: 0 - 180DEG
 γ Interval: 1.0DEG
Test System: EVERFINE GO-2000B_V1 SYSTEM V2.00.488
Humidity: 65.0%
Test Distance: 6.360m [K=1.0000]
Remarks:

LUMINOUS DISTRIBUTION INTENSITY DATA

Test:U:24.00V I:0.5284A P:12.68W PF:1.000 Freq:0Hz Lamp Flux:261.591x1 lm																	
NAME: SF17-24v-5050-72-RGB-ALL									TYPE:						WEIGHT:		
SPEC.:									DIM.: Length=1m						SERIAL No.:		
MFR.: Olym pia lighting									SUR.:						Shielding Angle:		

Table--1

UNIT: cd

C (DEG) γ (DEG)	0	30	60	90	120	150	180	210	240	270	300	330						
0	85.3	85.3	85.3	85.3	85.3	85.3	85.3	85.3	85.3	85.3	85.3	85.3						
5	84.5	84.6	84.7	84.8	85.0	85.1	85.2	85.1	85.0	84.9	84.7	84.6						
10	82.9	83.1	83.3	83.7	83.9	84.1	84.3	84.1	83.9	83.7	83.4	83.1						
15	80.5	80.8	81.2	81.7	82.1	82.3	82.5	82.4	82.1	81.7	81.3	80.8						
20	77.4	77.8	78.3	78.9	79.4	79.8	80.0	79.9	79.5	79.0	78.5	77.9						
25	73.6	74.1	74.7	75.5	76.1	76.6	76.9	76.7	76.3	75.6	75.0	74.2						
30	69.3	69.8	70.5	71.4	72.2	72.7	73.0	72.8	72.3	71.6	70.8	69.9						
35	64.4	64.9	65.8	66.8	67.6	68.2	68.6	68.3	67.8	67.0	66.2	65.1						
40	59.1	59.7	60.6	61.7	62.5	63.2	63.6	63.3	62.8	61.9	61.0	59.9						
45	53.4	54.0	55.0	56.2	57.1	57.7	58.1	57.8	57.4	56.4	55.5	54.3						
50	47.5	48.2	49.2	50.4	51.3	51.9	52.3	52.1	51.6	50.7	49.7	48.5						
55	41.4	42.1	43.2	44.3	45.2	45.8	46.2	46.0	45.6	44.6	43.7	42.5						
60	35.3	36.0	37.1	38.2	39.0	39.5	40.0	39.7	39.4	38.5	37.5	36.4						
65	29.2	29.9	30.9	32.0	32.7	33.2	33.6	33.4	33.1	32.3	31.4	30.3						
70	23.0	23.7	24.7	25.8	26.4	26.8	27.2	27.0	26.8	26.1	25.2	24.2						
75	17.0	17.7	18.6	19.6	20.1	20.4	20.8	20.7	20.6	19.9	19.0	18.1						
80	11.0	11.7	12.5	13.5	13.9	14.2	14.5	14.5	14.4	13.7	12.9	12.1						
85	5.22	5.81	6.52	7.47	7.87	8.05	8.38	8.34	8.30	7.67	6.92	6.14						
90	1.91	2.13	2.15	2.70	2.45	2.70	2.90	2.89	2.77	2.11	2.30	2.30						
95	1.57	1.77	1.97	2.33	1.77	1.20	0.82	1.21	1.93	2.07	2.01	1.89						
100	1.53	1.73	1.93	2.16	1.81	1.27	0.88	1.25	1.96	2.08	1.97	1.85						
105	1.52	1.70	1.90	2.11	1.85	1.33	0.95	1.30	1.97	2.10	1.92	1.81						
110	1.50	1.68	1.87	2.10	1.87	1.39	1.02	1.35	1.97	2.11	1.92	1.79						
115	1.49	1.62	1.88	2.09	1.89	1.46	1.10	1.40	1.97	2.11	1.94	1.72						
120	1.42	1.60	1.89	2.07	1.91	1.51	1.17	1.45	1.97	2.11	1.95	1.63						
125	1.41	1.64	1.91	2.06	1.91	1.57	1.24	1.49	1.97	2.10	1.96	1.64						
130	1.47	1.69	1.92	2.05	1.92	1.62	1.32	1.54	1.97	2.10	1.97	1.65						
135	1.54	1.72	1.92	2.04	1.92	1.67	1.39	1.59	1.97	2.09	1.97	1.67						
140	1.61	1.76	1.93	2.03	1.93	1.73	1.47	1.63	1.97	2.08	1.98	1.69						
145	1.67	1.80	1.94	2.02	1.94	1.77	1.55	1.68	1.97	2.07	1.98	1.71						
150	1.73	1.83	1.95	2.02	1.95	1.83	1.62	1.71	1.97	2.07	1.98	1.73						
155	1.78	1.87	1.96	2.02	1.97	1.87	1.70	1.75	1.97	2.06	1.98	1.76						
160	1.84	1.90	1.97	2.02	1.98	1.91	1.77	1.79	1.96	2.06	1.96	1.80						
165	1.90	1.93	1.97	2.02	1.99	1.94	1.85	1.85	1.96	2.03	1.96	1.85						
170	1.94	1.96	1.98	2.02	1.99	1.98	1.92	1.91	1.96	1.99	1.95	1.91						
175	1.97	1.99	1.99	2.02	2.00	2.01	1.96	1.95	2.00	1.99	1.99	1.96						
180	1.98	1.99	2.01	2.03	2.01	2.01	1.98	1.99	2.01	2.02	2.03	2.00						

C Range: 0 - 360DEG

C Interval: 30.0DEG

Test Speed: HIGH

Temperature:25.3℃

Operators:

Test Date:2025-03-11

γ Range: 0 - 180DEG

γ Interval: 1.0DEG

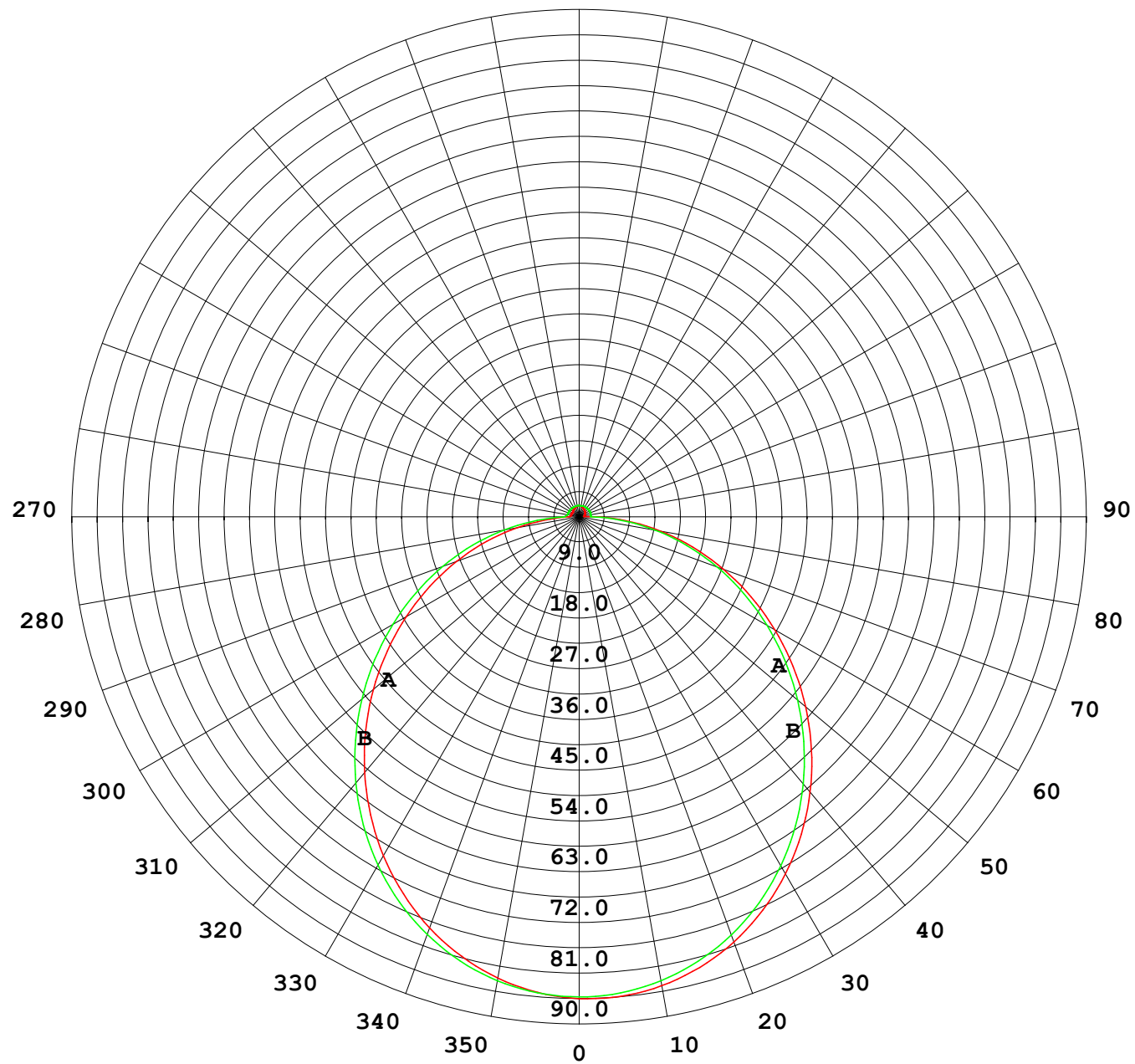
Test System:EVERFINE GO-2000B_V1 SYSTEM V2.00.488

Humidity:65.0%

Test Distance:6.360m [K=1.0000]

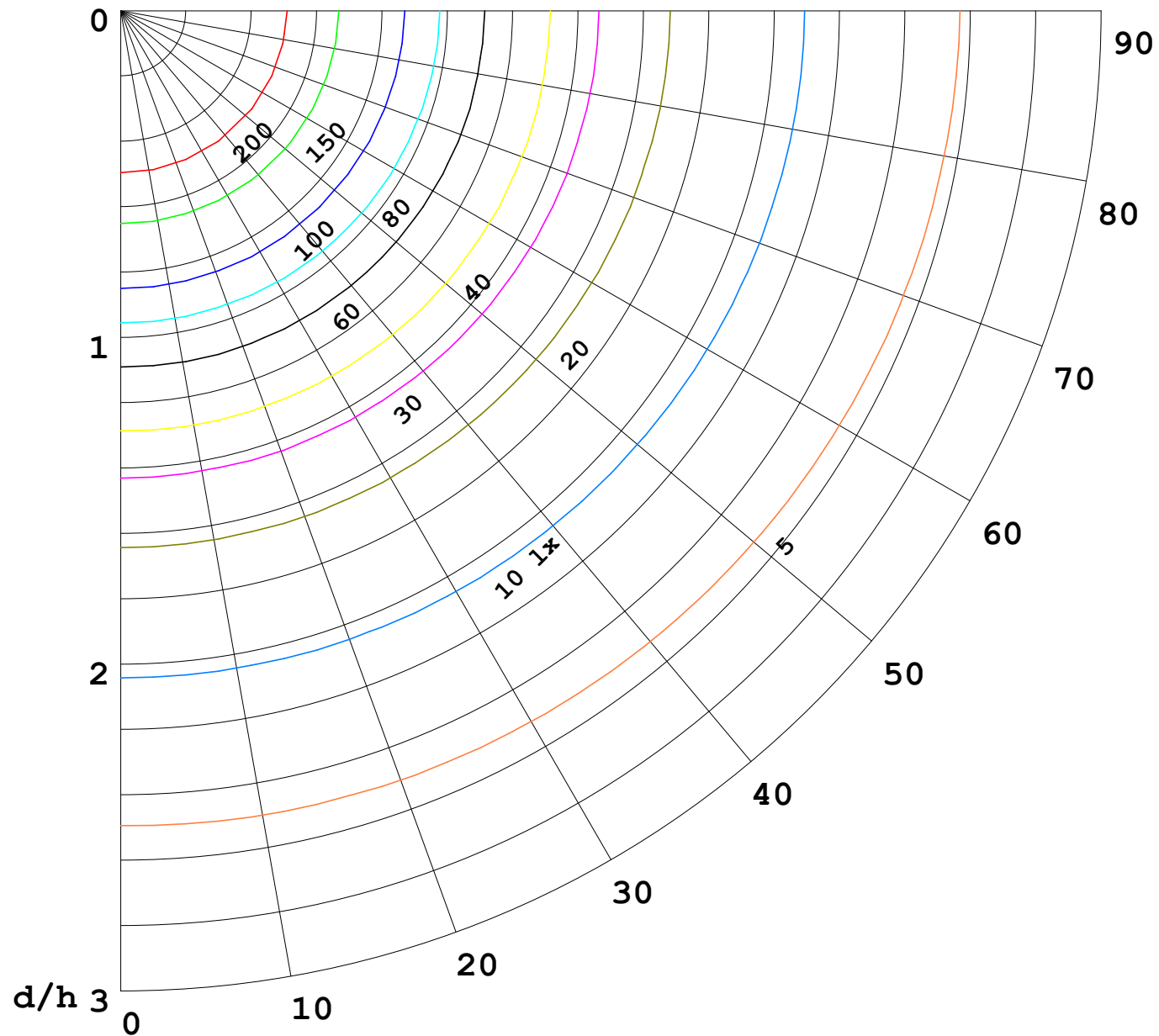
Remarks:

I (cd)



1000 lm

$\kappa = 1$



F = 1000 lm
 K = 0.7
 Hcc = 0.8 m
 Hfc = 0.0 m
 Eave = 100 lx

	Pcc	Pw	Pfc
—————	70	50	30
—————	50	30	20

