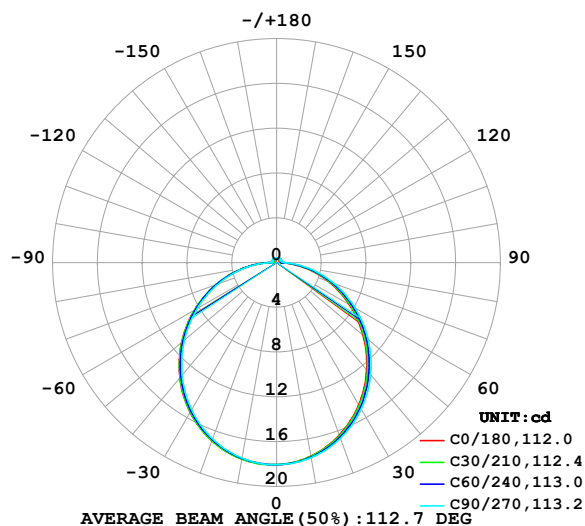


## LUMINAIRE PHOTOMETRIC TEST REPORT

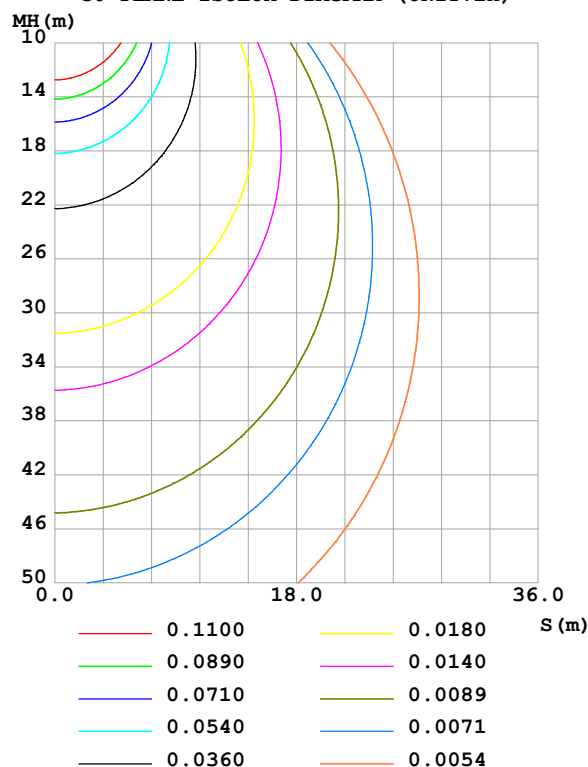
|  |                 |                  |
|--|-----------------|------------------|
| Test:U:24.00V I:0.1605A P:3.852W PF:1.000 Freq:0Hz<br>Lamp Flux:55.5389x1 lm |                 |                  |
| NAME: SF17-24v-5050-72-RGB-R   | TYPE:           | WEIGHT:          |
| SPEC.:   | DIM.: Length=1m | SERIAL No.:      |
| MFR.: OLympia lighting   | SUR.:           | Shielding Angle: |

| DATA OF LAMP     |         | PHOTOMETRIC DATA Eff: 14.42 lm/W |        |                        |          |
|------------------|---------|----------------------------------|--------|------------------------|----------|
| MODEL            | 5050    | Imax (cd)                        | 18.06  | S/MH(C0/180)           | 1.27     |
| NOMINAL POWER(W) |         | LOR(%)                           | 100.1  | S/MH(C90/270)          | 1.25     |
| RATED VOLTAGE(V) | 24      | TOTAL FLUX(lm)                   | 55.567 | $\eta$ UP,DN(C0-180)   | 2.3,47.3 |
| NOMINAL FLUX(lm) | 55.5389 | CIE CLASS                        | DIRECT | $\eta$ UP,DN(C180-360) | 2.2,48.3 |
| LAMPS INSIDE     | 1       | $\eta$ up (%)                    | 4.4    | CIBSE SHR NOM          | 1.25     |
| TEST VOLTAGE(V)  |         | $\eta$ down (%)                  | 95.6   | CIBSE SHR MAX          | 1.35     |

LUMINOUS INTENSITY DISTRIBUTION DIAGRAM



C0 PLANE ISOLUX DIAGRAM (UNIT:lx)



C Range: 0 - 360DEG  
C Interval: 30.0DEG  
Test Speed: HIGH  
Temperature:25.3℃  
Operators:  
Test Date:2025-03-11

$\gamma$  Range: 0 - 180DEG  
 $\gamma$  Interval: 1.0DEG  
Test System:EVERFINE GO-2000B\_V1 SYSTEM V2.00.488  
Humidity:65.0%  
Test Distance:6.360m [K=1.0000]  
Remarks:

## ZONAL FLUX DIAGRAM

## ZONAL FLUX DIAGRAM:

| $\gamma$ | C0                    | C45    | C90    | C135   | C180   | C225   | C270   | C315   | $\gamma$ | $\Phi$ zone | $\Phi$ total | %lum, lamp |
|----------|-----------------------|--------|--------|--------|--------|--------|--------|--------|----------|-------------|--------------|------------|
| 10       | 17.56                 | 17.62  | 17.71  | 17.80  | 17.82  | 17.80  | 17.74  | 17.63  | 0- 10    | 1.707       | 1.707        | 3.07,3.07  |
| 20       | 16.40                 | 16.53  | 16.72  | 16.88  | 16.94  | 16.89  | 16.75  | 16.55  | 10- 20   | 4.878       | 6.585        | 11.8,11.9  |
| 30       | 14.68                 | 14.86  | 15.13  | 15.36  | 15.45  | 15.38  | 15.18  | 14.90  | 20- 30   | 7.363       | 13.95        | 25.1,25.1  |
| 40       | 12.52                 | 12.74  | 13.07  | 13.34  | 13.45  | 13.36  | 13.13  | 12.80  | 30- 40   | 8.844       | 22.79        | 41,41      |
| 50       | 10.09                 | 10.32  | 10.68  | 10.96  | 11.08  | 11.00  | 10.75  | 10.40  | 40- 50   | 9.172       | 31.96        | 57.5,57.6  |
| 60       | 7.500                 | 7.750  | 8.105  | 8.349  | 8.468  | 8.400  | 8.167  | 7.833  | 50- 60   | 8.390       | 40.35        | 72.6,72.7  |
| 70       | 4.906                 | 5.150  | 5.470  | 5.659  | 5.757  | 5.722  | 5.532  | 5.228  | 60- 70   | 6.688       | 47.04        | 84.7,84.7  |
| 80       | 2.367                 | 2.581  | 2.872  | 3.000  | 3.081  | 3.068  | 2.911  | 2.651  | 70- 80   | 4.349       | 51.39        | 92.5,92.5  |
| 90       | 0.4410                | 0.4694 | 0.7722 | 0.5533 | 0.6048 | 0.6011 | 0.4477 | 0.4930 | 80- 90   | 1.715       | 53.11        | 95.6,95.6  |
| 100      | 0.3527                | 0.4011 | 0.5238 | 0.3424 | 0.2029 | 0.3504 | 0.4435 | 0.4115 | 90-100   | 0.4450      | 53.55        | 96.4,96.4  |
| 110      | 0.3385                | 0.3864 | 0.4606 | 0.3565 | 0.2304 | 0.3572 | 0.4435 | 0.4050 | 100-110  | 0.3964      | 53.95        | 97.1,97.1  |
| 120      | 0.3236                | 0.3853 | 0.4407 | 0.3753 | 0.2682 | 0.3673 | 0.4435 | 0.3928 | 110-120  | 0.3722      | 54.32        | 97.8,97.8  |
| 130      | 0.3206                | 0.3957 | 0.4407 | 0.3897 | 0.3003 | 0.3793 | 0.4435 | 0.3942 | 120-130  | 0.3416      | 54.66        | 98.4,98.4  |
| 140      | 0.3468                | 0.4038 | 0.4407 | 0.4011 | 0.3294 | 0.3909 | 0.4435 | 0.3972 | 130-140  | 0.3022      | 54.96        | 98.9,99    |
| 150      | 0.3702                | 0.4153 | 0.4407 | 0.4154 | 0.3645 | 0.4016 | 0.4435 | 0.4025 | 140-150  | 0.2520      | 55.22        | 99.4,99.4  |
| 160      | 0.3935                | 0.4220 | 0.4407 | 0.4275 | 0.3965 | 0.4102 | 0.4435 | 0.4120 | 150-160  | 0.1909      | 55.41        | 99.7,99.8  |
| 170      | 0.4152                | 0.4281 | 0.4400 | 0.4331 | 0.4260 | 0.4242 | 0.4435 | 0.4225 | 160-170  | 0.1200      | 55.53        | 99.9,100   |
| 180      | 0.4285                | 0.4330 | 0.4378 | 0.4384 | 0.4285 | 0.4330 | 0.4378 | 0.4355 | 170-180  | 0.0411      | 55.57        | 100,100    |
| DEG      | LUMINOUS INTENSITY:cd |        |        |        |        |        |        |        |          | UNIT:lm     |              |            |

Conical surface Flux(90deg): 27.408 lm

%lum = 49.3%

%lamp = 49.3%

Conical surface Flux(130deg): 43.958 lm

%lum = 79.1%

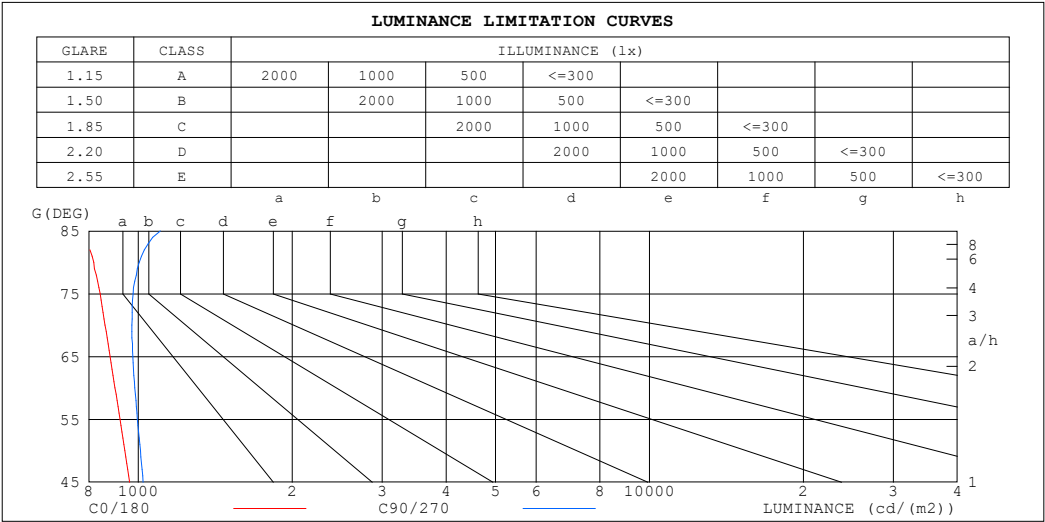
%lamp = 79.1%

C Range: 0 - 360DEG  
 C Interval: 30.0DEG  
 Test Speed: HIGH  
 Temperature:25.3℃  
 Operators:  
 Test Date:2025-03-11

$\gamma$  Range: 0 - 180DEG  
 $\gamma$  Interval: 1.0DEG  
 Test System:EVERFINE GO-2000B\_V1 SYSTEM V2.00.488  
 Humidity:65.0%  
 Test Distance:6.360m [K=1.0000]  
 Remarks:

LUMINANCE LIMITATION CURVES

|  |                 |                  |
|--|-----------------|------------------|
| Test:U:24.00V I:0.1605A P:3.852W PF:1.000 Freq:0Hz<br>Lamp Flux:55.5389x1 lm |                 |                  |
| NAME: SF17-24v-5050-72-RGB-R   | TYPE:           | WEIGHT:          |
| SPEC.:   | DIM.: Length=1m | SERIAL No.:      |
| MFR.: OLYMPIA lighting   | SUR.:           | Shielding Angle: |



| LUMINANCE cd/(m2) |        |         |
|-------------------|--------|---------|
| G (DEG)           | C0/180 | C90/270 |
| 85                | 779    | 1104    |
| 80                | 818    | 1005    |
| 75                | 842    | 977     |
| 70                | 861    | 971     |
| 65                | 880    | 975     |
| 60                | 900    | 985     |
| 55                | 920    | 996     |
| 50                | 942    | 1009    |
| 45                | 961    | 1022    |

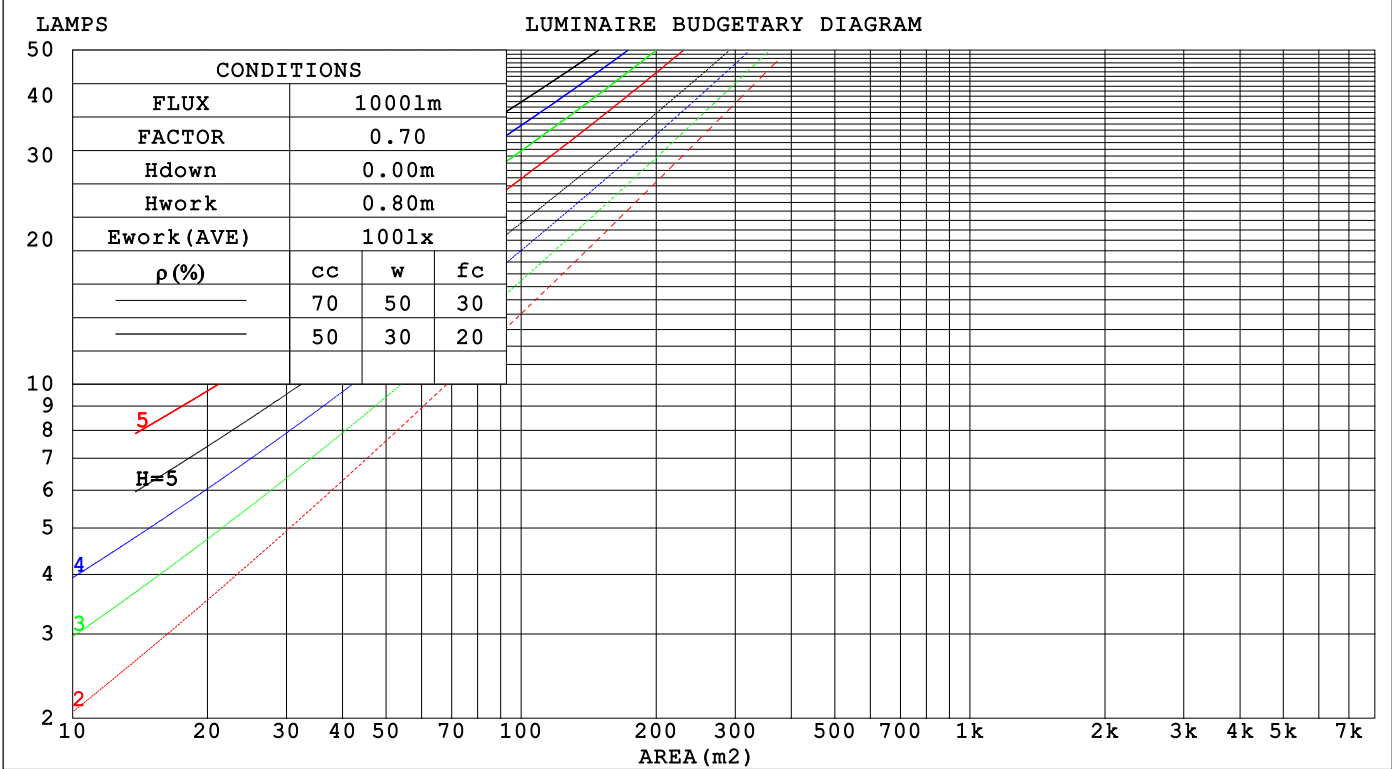
C Range: 0 - 360DEG  
C Interval: 30.0DEG  
Test Speed: HIGH  
Temperature:25.3℃  
Operators:  
Test Date:2025-03-11

γ Range: 0 - 180DEG  
γ Interval: 1.0DEG  
Test System:EVERFINE GO-2000B\_V1 SYSTEM V2.00.488  
Humidity:65.0%  
Test Distance:6.360m [K=1.0000]  
Remarks:

CU AND LUMINAIRE BUDGETARY ESTIMATE DIAGRAM

|  |                 |                  |
|--|-----------------|------------------|
| Test:U:24.00V I:0.1605A P:3.852W PF:1.000 Freq:0Hz |                 |                  |
| Lamp Flux:55.5389x1 lm                             |                 |                  |
| NAME: SF17-24v-5050-72-RGB-R                       | TYPE:           | WEIGHT:          |
| SPEC.:   | DIM.: Length=1m | SERIAL No.:      |
| MFR.: OLYMPIA lighting                             | SUR.:           | Shielding Angle: |

|                 |                       |     |     |     |     |     |     |     |     |     |     |     |     |     |     |   |
|-----------------|-----------------------|-----|-----|-----|-----|-----|-----|-----|-----|-----|-----|-----|-----|-----|-----|---|
| pcc             | 80%                   |     |     | 70% |     |     | 50% |     |     | 30% |     |     | 10% |     |     | 0 |
| p <sub>w</sub>  | 50%                   | 30% | 10% | 50% | 30% | 10% | 50% | 30% | 10% | 50% | 30% | 10% | 50% | 30% | 10% | 0 |
| p <sub>fc</sub> | 20%                   |     |     | 20% |     |     | 20% |     |     | 20% |     |     | 20% |     |     | 0 |
| RCR             | RCR:Room Cavity Ratio |     |     |     |     |     |     |     |     |     |     |     |     |     |     |   |



C Range: 0 - 360DEG  
C Interval: 30.0DEG  
Test Speed: HIGH  
Temperature:25.3℃  
Operators:  
Test Date:2025-03-11

γ Range: 0 - 180DEG  
γ Interval: 1.0DEG  
Test System:EVERFINE GO-2000B\_V1 SYSTEM V2.00.488  
Humidity:65.0%  
Test Distance:6.360m [K=1.0000]  
Remarks:

## WEC AND CCEC

|  |                 |                  |
|--|-----------------|------------------|
| Test:U:24.00V I:0.1605A P:3.852W PF:1.000 Freq:0Hz<br>Lamp Flux:55.5389x1 lm |                 |                  |
| NAME: SF17-24v-5050-72-RGB-R   | TYPE:           | WEIGHT:          |
| SPEC.:   | DIM.: Length=1m | SERIAL No.:      |
| MFR.: OLympia lighting   | SUR.:           | Shielding Angle: |

| pcc  | 80%                   |      |      | 70%  |      |      | 50%  |      |      | 30%  |      |      | 10%  |      |      | 0                               |  |  |  |  |  |  |  |  |  |  |  |  |  |  |
|------|-----------------------|------|------|------|------|------|------|------|------|------|------|------|------|------|------|---------------------------------|--|--|--|--|--|--|--|--|--|--|--|--|--|--|
| pw   | 50%                   | 30%  | 10%  | 50%  | 30%  | 10%  | 50%  | 30%  | 10%  | 50%  | 30%  | 10%  | 50%  | 30%  | 10%  | 0                               |  |  |  |  |  |  |  |  |  |  |  |  |  |  |
| pfc  | 20%                   |      |      | 20%  |      |      | 20%  |      |      | 20%  |      |      | 20%  |      |      | 0                               |  |  |  |  |  |  |  |  |  |  |  |  |  |  |
| RCR  | RCR:Room Cavity Ratio |      |      |      |      |      |      |      |      |      |      |      |      |      |      | Wall Exitance Coefficients(WEC) |  |  |  |  |  |  |  |  |  |  |  |  |  |  |
| 0.0  |                       |      |      |      |      |      |      |      |      |      |      |      |      |      |      |                                 |  |  |  |  |  |  |  |  |  |  |  |  |  |  |
| 1.0  | .327                  | .186 | .059 | .319 | .182 | .058 | .303 | .174 | .055 | .288 | .166 | .053 | .275 | .159 | .051 |                                 |  |  |  |  |  |  |  |  |  |  |  |  |  |  |
| 2.0  | .301                  | .165 | .051 | .294 | .162 | .050 | .280 | .156 | .048 | .267 | .150 | .047 | .255 | .144 | .045 |                                 |  |  |  |  |  |  |  |  |  |  |  |  |  |  |
| 3.0  | .276                  | .147 | .044 | .269 | .144 | .043 | .257 | .139 | .042 | .245 | .134 | .041 | .234 | .130 | .040 |                                 |  |  |  |  |  |  |  |  |  |  |  |  |  |  |
| 4.0  | .253                  | .132 | .039 | .247 | .129 | .038 | .236 | .125 | .037 | .225 | .121 | .037 | .216 | .117 | .036 |                                 |  |  |  |  |  |  |  |  |  |  |  |  |  |  |
| 5.0  | .233                  | .119 | .034 | .228 | .117 | .034 | .218 | .113 | .033 | .208 | .110 | .033 | .199 | .107 | .032 |                                 |  |  |  |  |  |  |  |  |  |  |  |  |  |  |
| 6.0  | .215                  | .108 | .031 | .211 | .106 | .031 | .202 | .103 | .030 | .193 | .100 | .029 | .185 | .097 | .029 |                                 |  |  |  |  |  |  |  |  |  |  |  |  |  |  |
| 7.0  | .200                  | .099 | .028 | .196 | .098 | .028 | .188 | .095 | .027 | .180 | .092 | .027 | .173 | .090 | .026 |                                 |  |  |  |  |  |  |  |  |  |  |  |  |  |  |
| 8.0  | .186                  | .091 | .026 | .183 | .090 | .025 | .175 | .088 | .025 | .168 | .085 | .025 | .162 | .083 | .024 |                                 |  |  |  |  |  |  |  |  |  |  |  |  |  |  |
| 9.0  | .175                  | .084 | .024 | .171 | .083 | .023 | .164 | .081 | .023 | .158 | .079 | .023 | .152 | .077 | .022 |                                 |  |  |  |  |  |  |  |  |  |  |  |  |  |  |
| 10.0 | .164                  | .079 | .022 | .161 | .078 | .022 | .155 | .076 | .021 | .149 | .074 | .021 | .143 | .072 | .021 |                                 |  |  |  |  |  |  |  |  |  |  |  |  |  |  |

| pcc  | 80%                   |      |      | 70%  |      |      | 50%   |      |      | 30%  |      |      | 10%  |      |      | 0 |
|------|-----------------------|------|------|------|------|------|---|------|------|------|------|------|------|------|------|---|
| pw   | 50%                   | 30%  | 10%  | 50%  | 30%  | 10%  | 50%   | 30%  | 10%  | 50%  | 30%  | 10%  | 50%  | 30%  | 10%  | 0 |
| pfc  | 20%                   |      |      | 20%  |      |      | 20%   |      |      | 20%  |      |      | 20%  |      |      | 0 |
| RCR  | RCR:Room Cavity Ratio |      |      |      |      |      | Ceiling Cavity Exitance Coefficients (CCEC) |      |      |      |      |      |      |      |      |   |
| 0.0  | .224                  | .224 | .224 | .192 | .192 | .192 | .131  | .131 | .131 | .075 | .075 | .075 | .024 | .024 | .024 |   |
| 1.0  | .216                  | .190 | .167 | .185 | .163 | .144 | .126  | .112 | .099 | .073 | .065 | .058 | .023 | .021 | .019 |   |
| 2.0  | .208                  | .166 | .131 | .178 | .143 | .113 | .122  | .099 | .079 | .070 | .058 | .046 | .023 | .019 | .015 |   |
| 3.0  | .200                  | .149 | .108 | .172 | .128 | .094 | .118  | .089 | .066 | .068 | .052 | .039 | .022 | .017 | .013 |   |
| 4.0  | .192                  | .136 | .092 | .165 | .117 | .080 | .114  | .082 | .057 | .066 | .048 | .033 | .021 | .016 | .011 |   |
| 5.0  | .185                  | .125 | .082 | .159 | .109 | .071 | .109  | .076 | .050 | .063 | .045 | .030 | .020 | .015 | .010 |   |
| 6.0  | .178                  | .117 | .074 | .153 | .101 | .064 | .105  | .071 | .045 | .061 | .042 | .027 | .020 | .014 | .009 |   |
| 7.0  | .171                  | .110 | .068 | .147 | .096 | .059 | .102  | .067 | .042 | .059 | .040 | .025 | .019 | .013 | .008 |   |
| 8.0  | .164                  | .105 | .064 | .141 | .091 | .055 | .098  | .064 | .039 | .057 | .038 | .023 | .018 | .012 | .008 |   |
| 9.0  | .158                  | .100 | .060 | .136 | .087 | .053 | .094  | .061 | .037 | .055 | .036 | .022 | .018 | .012 | .007 |   |
| 10.0 | .152                  | .095 | .058 | .131 | .083 | .050 | .091  | .058 | .036 | .053 | .034 | .021 | .017 | .011 | .007 |   |

C Range: 0 - 360DEG  
C Interval: 30.0DEG  
Test Speed: HIGH  
Temperature:25.3℃  
Operators:  
Test Date:2025-03-11

γ Range: 0 - 180DEG  
γ Interval: 1.0DEG  
Test System:EVERFINE GO-2000B\_V1 SYSTEM V2.00.488  
Humidity:65.0%  
Test Distance:6.360m [K=1.0000]  
Remarks:

## UGR(Unified Glare Rating) Table

|  |                  |      |      |      |                 |                |      |                  |      |      |
|--|------------------|------|------|------|-----------------|----------------|------|------------------|------|------|
| Test:U:24.00V I:0.1605A P:3.852W PF:1.000 Freq:0Hz<br>Lamp Flux:55.5389x1 lm |                  |      |      |      |                 |                |      |                  |      |      |
| NAME: SF17-24v-5050-72-RGB-R   |                  |      |      |      | TYPE:           |                |      | WEIGHT:          |      |      |
| SPEC.:   |                  |      |      |      | DIM.: Length=1m |                |      | SERIAL No.:      |      |      |
| MFR.: OLympia lighting   |                  |      |      |      | SUR.:           |                |      | Shielding Angle: |      |      |
| ceiling/cavity   | 0.7              | 0.7  | 0.5  | 0.5  | 0.3             | 0.7            | 0.7  | 0.5              | 0.5  | 0.3  |
| walls  | 0.5              | 0.3  | 0.5  | 0.3  | 0.3             | 0.5            | 0.3  | 0.5              | 0.3  | 0.3  |
| working plane  | 0.2              | 0.2  | 0.2  | 0.2  | 0.2             | 0.2            | 0.2  | 0.2              | 0.2  | 0.2  |
| Room dimensions  | Viewed crosswise |      |      |      |                 | Viewed endwise |      |                  |      |      |
| x = 2H y = 2H  | 22.1             | 23.5 | 22.4 | 23.8 | 24.1            | 22.4           | 23.9 | 22.7             | 24.2 | 24.5 |
| 3H   | 23.7             | 25.0 | 24.0 | 25.3 | 25.7            | 24.1           | 25.5 | 24.5             | 25.8 | 26.1 |
| 4H   | 24.4             | 25.7 | 24.7 | 26.0 | 26.3            | 24.9           | 26.2 | 25.3             | 26.5 | 26.9 |
| 6H   | 24.9             | 26.1 | 25.3 | 26.5 | 26.9            | 25.6           | 26.8 | 26.0             | 27.1 | 27.5 |
| 8H   | 25.1             | 26.3 | 25.5 | 26.7 | 27.1            | 25.8           | 27.0 | 26.2             | 27.4 | 27.8 |
| 12H  | 25.3             | 26.4 | 25.7 | 26.8 | 27.2            | 26.1           | 27.2 | 26.5             | 27.6 | 28.0 |
| 4H 2H  | 22.7             | 24.0 | 23.1 | 24.4 | 24.7            | 23.0           | 24.3 | 23.4             | 24.6 | 25.0 |
| 3H   | 24.5             | 25.7 | 24.9 | 26.0 | 26.4            | 24.9           | 26.0 | 25.3             | 26.4 | 26.8 |
| 4H   | 25.4             | 26.4 | 25.8 | 26.8 | 27.2            | 25.8           | 26.9 | 26.3             | 27.3 | 27.7 |
| 6H   | 26.1             | 27.0 | 26.5 | 27.4 | 27.9            | 26.6           | 27.6 | 27.1             | 28.0 | 28.5 |
| 8H   | 26.3             | 27.2 | 26.8 | 27.6 | 28.1            | 27.0           | 27.8 | 27.5             | 28.3 | 28.8 |
| 12H  | 26.5             | 27.3 | 27.0 | 27.8 | 28.3            | 27.3           | 28.1 | 27.8             | 28.5 | 29.0 |
| 8H 4H  | 25.7             | 26.6 | 26.2 | 27.0 | 27.5            | 26.1           | 27.0 | 26.6             | 27.4 | 27.9 |
| 6H   | 26.6             | 27.3 | 27.1 | 27.8 | 28.3            | 27.1           | 27.8 | 27.6             | 28.3 | 28.8 |
| 8H   | 27.0             | 27.6 | 27.5 | 28.1 | 28.7            | 27.6           | 28.2 | 28.1             | 28.7 | 29.3 |
| 12H  | 27.3             | 27.8 | 27.8 | 28.3 | 28.9            | 28.0           | 28.5 | 28.5             | 29.1 | 29.6 |
| 12H 4H   | 25.7             | 26.5 | 26.2 | 27.0 | 27.5            | 26.1           | 26.9 | 26.6             | 27.4 | 27.9 |
| 6H   | 26.7             | 27.3 | 27.2 | 27.8 | 28.4            | 27.2           | 27.8 | 27.7             | 28.3 | 28.9 |
| 8H   | 27.1             | 27.7 | 27.7 | 28.2 | 28.8            | 27.7           | 28.3 | 28.2             | 28.8 | 29.4 |
| Variations with the observer position at spacings(CIE Pub.117):              |                  |      |      |      |                 |                |      |                  |      |      |
| S = 1.0H   | + 0.1 / - 0.2    |      |      |      |                 | + 0.1 / - 0.2  |      |                  |      |      |
| 1.5H   | + 0.2 / - 0.3    |      |      |      |                 | + 0.2 / - 0.3  |      |                  |      |      |
| 2.0H   | + 0.1 / - 0.3    |      |      |      |                 | + 0.1 / - 0.2  |      |                  |      |      |

CIE Pub.117, 55.54 lm Total Lamp Luminous Flux Correct (8log(F/F0) = -10.0)  
Area: 0.0165 m2

C Range: 0 - 360DEG  
C Interval: 30.0DEG  
Test Speed: HIGH  
Temperature:25.3℃  
Operators:  
Test Date:2025-03-11

γ Range: 0 - 180DEG  
γ Interval: 1.0DEG  
Test System:EVERFINE GO-2000B\_V1 SYSTEM V2.00.488  
Humidity:65.0%  
Test Distance:6.360m [K=1.0000]  
Remarks:

## UTILIZATION FACTORS TABLE

|  |                 |                  |
|--|-----------------|------------------|
| Test:U:24.00V I:0.1605A P:3.852W PF:1.000 Freq:0Hz<br>Lamp Flux:55.5389x1 lm |                 |                  |
| NAME: SF17-24v-5050-72-RGB-R   | TYPE:           | WEIGHT:          |
| SPEC.:   | DIM.: Length=1m | SERIAL No.:      |
| MFR.: OLympia lighting   | SUR.:           | Shielding Angle: |

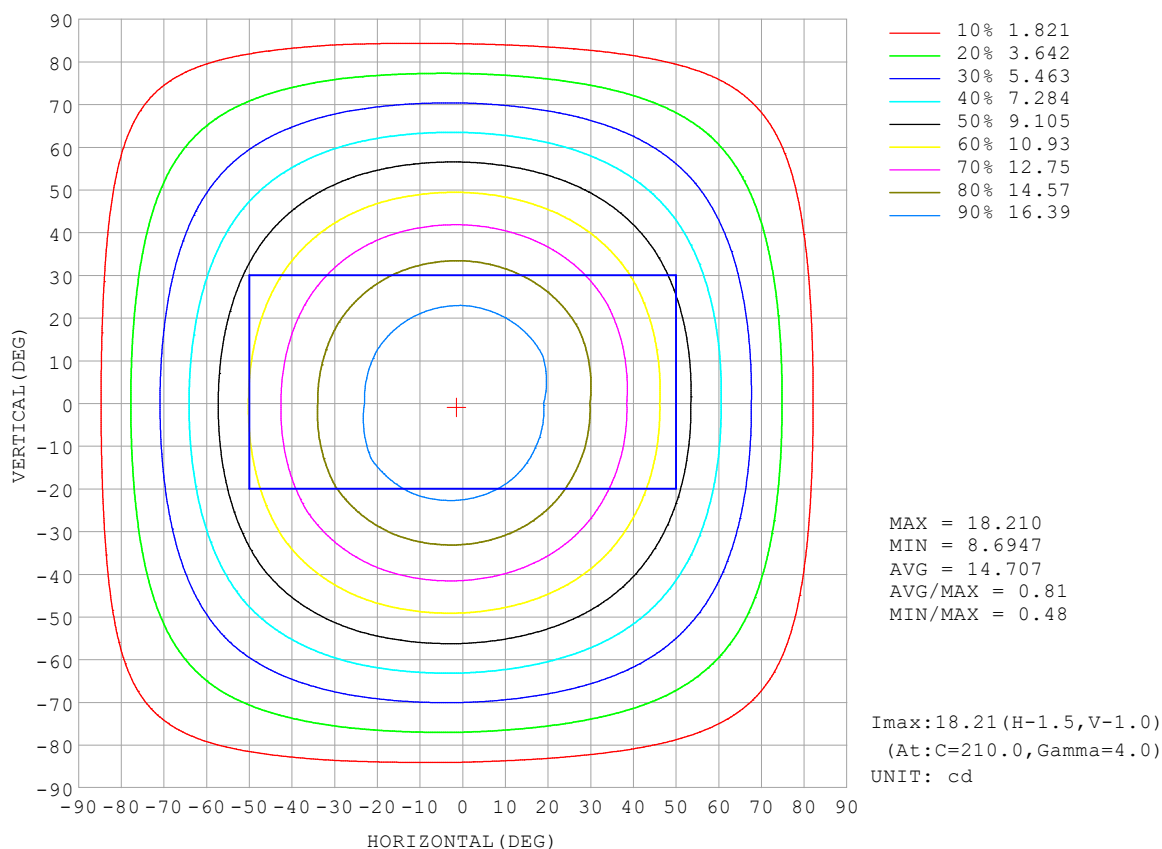
| REFLECTANCE                      |  |     |           |     |     |     |     |               |     |        |
|----------------------------------|--|-----|-----------|-----|-----|-----|-----|---------------|-----|--------|
| Ceiling                          | 0.8  | 0.8 | 0.8       | 0.7 | 0.7 | 0.7 | 0.5 | 0.5           | 0.5 | 0      |
| Walls                            | 0.7  | 0.5 | 0.3       | 0.7 | 0.5 | 0.3 | 0.7 | 0.5           | 0.3 | 0      |
| Working plane                    | 0.2  | 0.2 | 0.2       | 0.2 | 0.2 | 0.2 | 0.2 | 0.2           | 0.2 | 0      |
| ROOM INDEX                       | UTILIZATION FACTORS (PERCENT) $k(RI) \times RCR = 5$ |     |           |     |     |     |     |               |     |        |
| $k = 0.60$                       | 55   | 44  | 37        | 55  | 43  | 37  | 53  | 43            | 36  | 30     |
| 0.80                             | 65   | 53  | 46        | 64  | 53  | 46  | 62  | 52            | 45  | 38     |
| 1.00                             | 73   | 62  | 54        | 72  | 61  | 54  | 69  | 62            | 53  | 46     |
| 1.25                             | 81   | 70  | 62        | 79  | 69  | 62  | 76  | 67            | 61  | 53     |
| 1.50                             | 86   | 75  | 68        | 84  | 74  | 67  | 80  | 72            | 66  | 57     |
| 2.00                             | 92   | 83  | 77        | 90  | 82  | 76  | 86  | 79            | 74  | 65     |
| 2.50                             | 97   | 88  | 82        | 94  | 87  | 81  | 90  | 83            | 78  | 69     |
| 3.00                             | 100  | 93  | 87        | 97  | 91  | 85  | 93  | 87            | 83  | 73     |
| 4.00                             | 104  | 98  | 93        | 101 | 96  | 91  | 96  | 92            | 88  | 78     |
| 5.00                             | 107  | 101 | 97        | 104 | 99  | 95  | 99  | 95            | 91  | 81     |
| ROOM INDEX                       | UF (total)   |     |           |     |     |     |     |               |     | Direct |
| According to DIN EN 13032-2 2004 |  |     | Suspended |     |     |     |     | SHRNOM = 1.25 |     |        |

C Range: 0 - 360DEG  
 C Interval: 30.0DEG  
 Test Speed: HIGH  
 Temperature: 25.3 °C  
 Operators:  
 Test Date: 2025-03-11

γ Range: 0 - 180DEG  
 γ Interval: 1.0DEG  
 Test System: EVERFINE GO-2000B\_V1 SYSTEM V2.00.488  
 Humidity: 65.0%  
 Test Distance: 6.360m [K=1.0000]  
 Remarks:

## ISOCANDELA DIAGRAM

|  |                 |                  |
|--|-----------------|------------------|
| Test:U:24.00V I:0.1605A P:3.852W PF:1.000 Freq:0Hz<br>Lamp Flux:55.5389x1 lm |                 |                  |
| NAME: SF17-24v-5050-72-RGB-R   | TYPE:           | WEIGHT:          |
| SPEC.:   | DIM.: Length=1m | SERIAL No.:      |
| MFR.: OLympia lighting   | SUR.:           | Shielding Angle: |



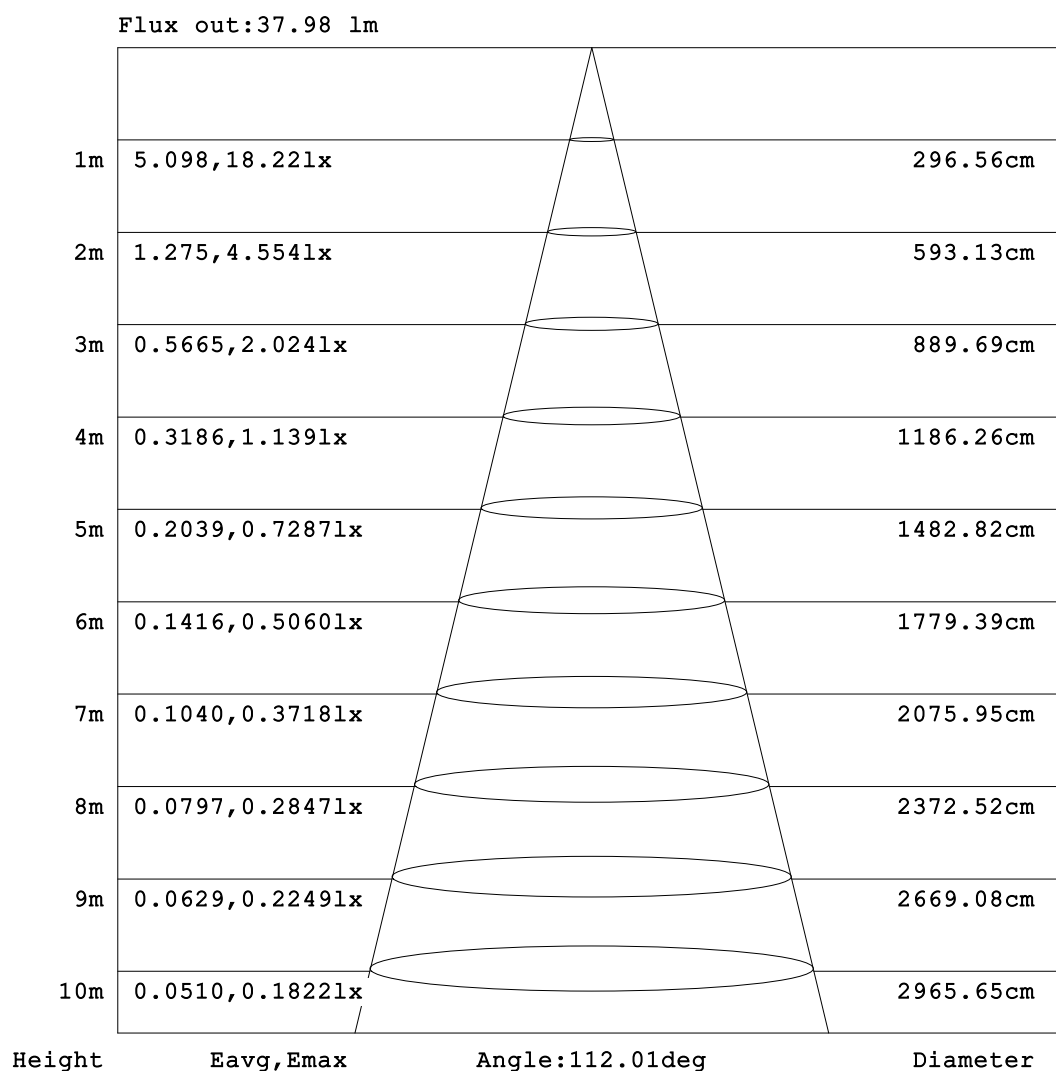
C Range: 0 - 360DEG  
C Interval: 30.0DEG  
Test Speed: HIGH  
Temperature:25.3℃  
Operators:  
Test Date:2025-03-11

γ Range: 0 - 180DEG  
γ Interval: 1.0DEG  
Test System:EVERFINE GO-2000B\_V1 SYSTEM V2.00.488  
Humidity:65.0%  
Test Distance:6.360m [K=1.0000]  
Remarks:



## AAI Figure

|  |                 |                  |
|--|-----------------|------------------|
| Test:U:24.00V I:0.1605A P:3.852W PF:1.000 Freq:0Hz<br>Lamp Flux:55.5389x1 lm |                 |                  |
| NAME: SF17-24v-5050-72-RGB-R   | TYPE:           | WEIGHT:          |
| SPEC.:   | DIM.: Length=1m | SERIAL No.:      |
| MFR.: OLympia lighting   | SUR.:           | Shielding Angle: |



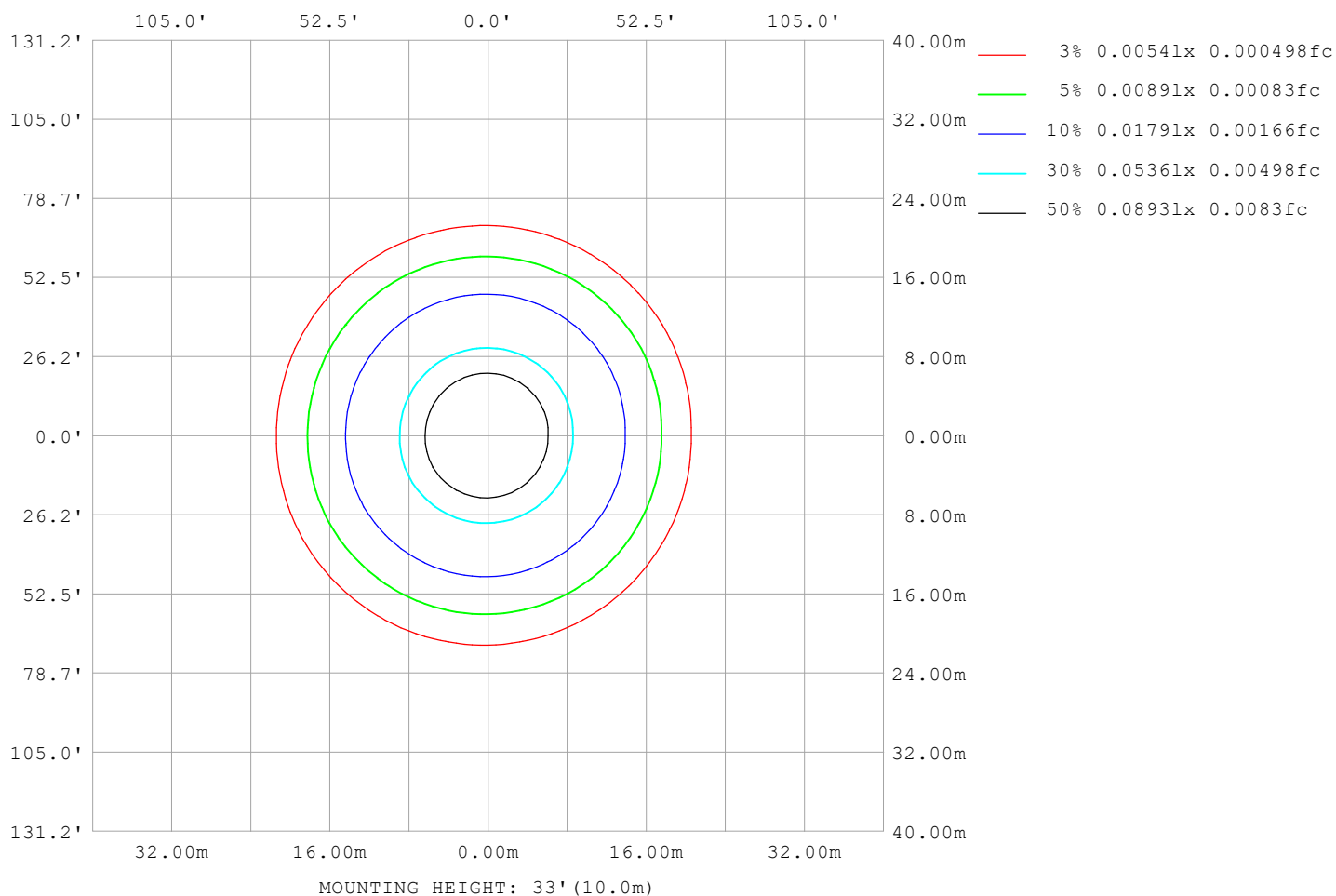
Note:The Curves indicate the illuminated area and the average illumination when the luminaire is at different distance.

C Range: 0 - 360DEG  
C Interval: 30.0DEG  
Test Speed: HIGH  
Temperature:25.3℃  
Operators:  
Test Date:2025-03-11

γ Range: 0 - 180DEG  
γ Interval: 1.0DEG  
Test System:EVERFINE GO-2000B\_V1 SYSTEM V2.00.488  
Humidity:65.0%  
Test Distance:6.360m [K=1.0000]  
Remarks:

## ISOLUX DIAGRAM

|  |                 |                  |
|--|-----------------|------------------|
| Test:U:24.00V I:0.1605A P:3.852W PF:1.000 Freq:0Hz<br>Lamp Flux:55.5389x1 lm |                 |                  |
| NAME: SF17-24v-5050-72-RGB-R   | TYPE:           | WEIGHT:          |
| SPEC.:   | DIM.: Length=1m | SERIAL No.:      |
| MFR.: OLympia lighting   | SUR.:           | Shielding Angle: |



C Range: 0 - 360DEG  
C Interval: 30.0DEG  
Test Speed: HIGH  
Temperature: 25.3°C  
Operators:  
Test Date: 2025-03-11

γ Range: 0 - 180DEG  
γ Interval: 1.0DEG  
Test System: EVERFINE GO-2000B\_V1 SYSTEM V2.00.488  
Humidity: 65.0%  
Test Distance: 6.360m [K=1.0000]  
Remarks:

## LED Avg.L Report

|  |                 |                  |
|--|-----------------|------------------|
| Test:U:24.00V I:0.1605A P:3.852W PF:1.000 Freq:0Hz<br>Lamp Flux:55.5389x1 lm |                 |                  |
| NAME: SF17-24v-5050-72-RGB-R   | TYPE:           | WEIGHT:          |
| SPEC.:   | DIM.: Length=1m | SERIAL No.:      |
| MFR.: OLympia lighting   | SUR.:           | Shielding Angle: |

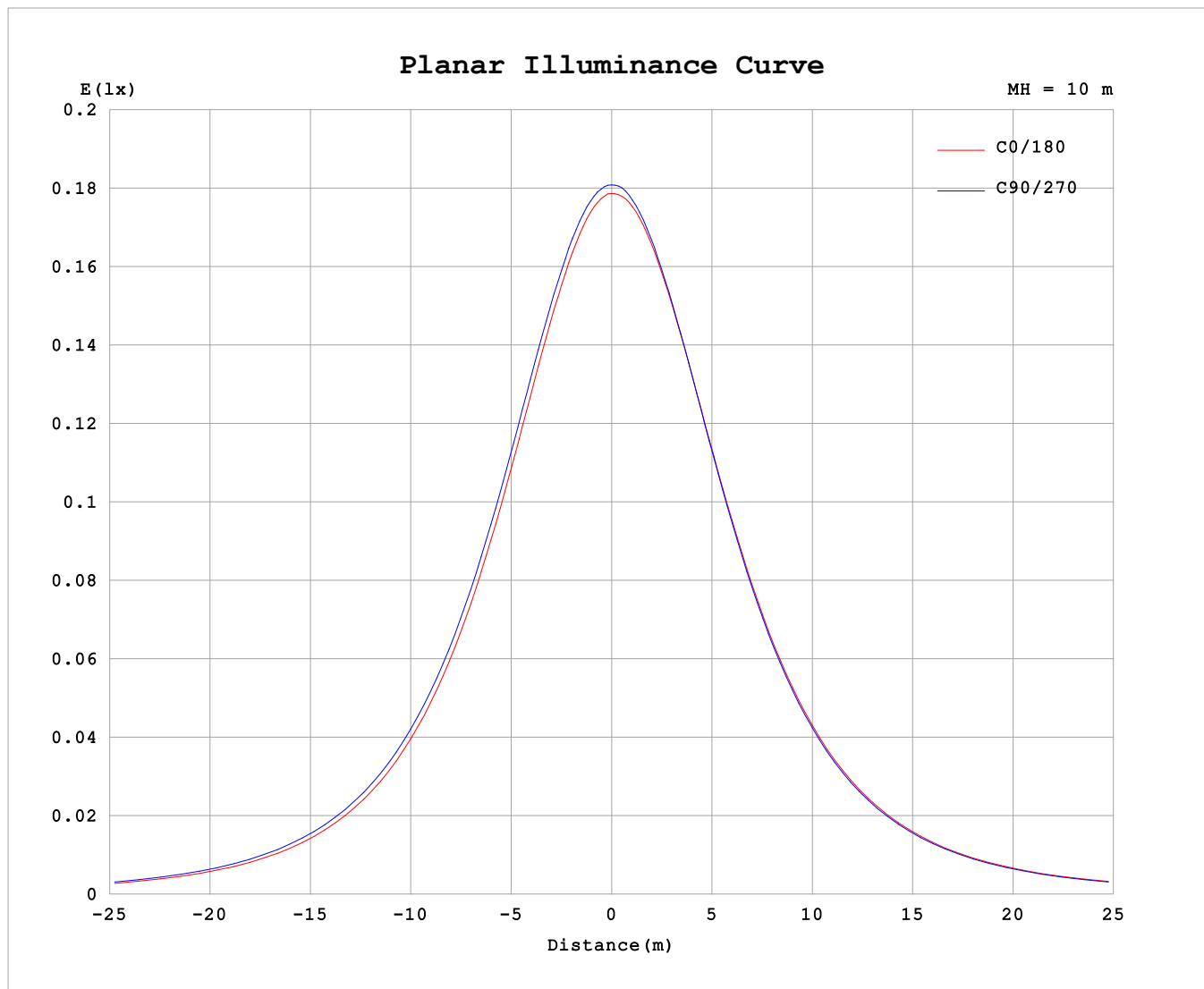
| AvgL             | cd/m2 |
|------------------|-------|
| L_0~180 (65) av  | 955   |
| L_0~180 (75) av  | 942   |
| L_0~180 (85) av  | 1007  |
| L_90~270 (65) av | 978   |
| L_90~270 (75) av | 981   |
| L_90~270 (85) av | 1112  |
| L_45 (65) av     | 971   |
| L_45 (75) av     | 967   |
| L_45 (85) av     | 1071  |

Standard: GB/T 29293-2012

C Range: 0 - 360DEG  
C Interval: 30.0DEG  
Test Speed: HIGH  
Temperature:25.3℃  
Operators:  
Test Date:2025-03-11

γ Range: 0 - 180DEG  
γ Interval: 1.0DEG  
Test System:EVERFINE GO-2000B\_V1 SYSTEM V2.00.488  
Humidity:65.0%  
Test Distance:6.360m [K=1.0000]  
Remarks:

## Planar Illuminance Curve



C Range: 0 - 360DEG  
C Interval: 30.0DEG  
Test Speed: HIGH  
Temperature: 25.3°C  
Operators:  
Test Date: 2025-03-11

$\gamma$  Range: 0 - 180DEG  
 $\gamma$  Interval: 1.0DEG  
Test System: EVERFINE GO-2000B\_V1 SYSTEM V2.00.488  
Humidity: 65.0%  
Test Distance: 6.360m [K=1.0000]  
Remarks:

## LUMINOUS DISTRIBUTION INTENSITY DATA

|  |  |  |  |  |  |  |  |  |                 |  |  |                  |  |  |  |  |  |
|--|--|--|--|--|--|--|--|--|-----------------|--|--|------------------|--|--|--|--|--|
| Test:U:24.00V I:0.1605A P:3.852W PF:1.000 Freq:0Hz<br>Lamp Flux:55.5389x1 lm |  |  |  |  |  |  |  |  |                 |  |  |                  |  |  |  |  |  |
| NAME: SF17-24v-5050-72-RGB-R   |  |  |  |  |  |  |  |  | TYPE:           |  |  | WEIGHT:          |  |  |  |  |  |
| SPEC.:   |  |  |  |  |  |  |  |  | DIM.: Length=1m |  |  | SERIAL No.:      |  |  |  |  |  |
| MFR.: OLYMPIA lighting   |  |  |  |  |  |  |  |  | SUR.:           |  |  | Shielding Angle: |  |  |  |  |  |

Table--1

UNIT: cd

| C (DEG)<br>γ (DEG) | 0     | 30   | 60   | 90   | 120  | 150  | 180  | 210  | 240  | 270  | 300  | 330  |  |  |  |  |  |  |
|--------------------|-------|------|------|------|------|------|------|------|------|------|------|------|--|--|--|--|--|--|
| 0                  | 18.0  | 18.0 | 18.0 | 18.0 | 18.0 | 18.0 | 18.0 | 18.0 | 18.0 | 18.0 | 18.0 | 18.0 |  |  |  |  |  |  |
| 5                  | 17.9  | 17.9 | 17.9 | 18.0 | 18.0 | 18.0 | 18.0 | 18.0 | 18.0 | 18.0 | 18.0 | 17.9 |  |  |  |  |  |  |
| 10                 | 17.6  | 17.6 | 17.7 | 17.7 | 17.8 | 17.8 | 17.8 | 17.8 | 17.8 | 17.7 | 17.7 | 17.6 |  |  |  |  |  |  |
| 15                 | 17.1  | 17.1 | 17.2 | 17.3 | 17.4 | 17.4 | 17.5 | 17.5 | 17.4 | 17.3 | 17.2 | 17.1 |  |  |  |  |  |  |
| 20                 | 16.4  | 16.5 | 16.6 | 16.7 | 16.9 | 16.9 | 16.9 | 16.9 | 16.8 | 16.8 | 16.6 | 16.5 |  |  |  |  |  |  |
| 25                 | 15.6  | 15.7 | 15.8 | 16.0 | 16.2 | 16.2 | 16.3 | 16.3 | 16.1 | 16.0 | 15.9 | 15.7 |  |  |  |  |  |  |
| 30                 | 14.7  | 14.8 | 14.9 | 15.1 | 15.3 | 15.4 | 15.5 | 15.4 | 15.3 | 15.2 | 15.0 | 14.8 |  |  |  |  |  |  |
| 35                 | 13.6  | 13.7 | 13.9 | 14.2 | 14.4 | 14.5 | 14.5 | 14.5 | 14.4 | 14.2 | 14.0 | 13.8 |  |  |  |  |  |  |
| 40                 | 12.5  | 12.6 | 12.8 | 13.1 | 13.3 | 13.4 | 13.4 | 13.4 | 13.3 | 13.1 | 12.9 | 12.7 |  |  |  |  |  |  |
| 45                 | 11.3  | 11.4 | 11.7 | 11.9 | 12.1 | 12.2 | 12.3 | 12.3 | 12.2 | 12.0 | 11.8 | 11.5 |  |  |  |  |  |  |
| 50                 | 10.09 | 10.2 | 10.4 | 10.7 | 10.9 | 11.0 | 11.1 | 11.1 | 10.9 | 10.7 | 10.5 | 10.3 |  |  |  |  |  |  |
| 55                 | 8.80  | 8.93 | 9.17 | 9.40 | 9.62 | 9.73 | 9.79 | 9.77 | 9.67 | 9.47 | 9.25 | 9.01 |  |  |  |  |  |  |
| 60                 | 7.50  | 7.63 | 7.87 | 8.11 | 8.30 | 8.40 | 8.47 | 8.45 | 8.35 | 8.17 | 7.95 | 7.71 |  |  |  |  |  |  |
| 65                 | 6.20  | 6.33 | 6.57 | 6.79 | 6.97 | 7.05 | 7.12 | 7.09 | 7.03 | 6.85 | 6.66 | 6.42 |  |  |  |  |  |  |
| 70                 | 4.91  | 5.04 | 5.26 | 5.47 | 5.62 | 5.69 | 5.76 | 5.75 | 5.70 | 5.53 | 5.33 | 5.12 |  |  |  |  |  |  |
| 75                 | 3.63  | 3.76 | 3.96 | 4.16 | 4.29 | 4.35 | 4.41 | 4.40 | 4.37 | 4.22 | 4.04 | 3.84 |  |  |  |  |  |  |
| 80                 | 2.37  | 2.49 | 2.67 | 2.87 | 2.98 | 3.02 | 3.08 | 3.08 | 3.06 | 2.91 | 2.74 | 2.56 |  |  |  |  |  |  |
| 85                 | 1.13  | 1.24 | 1.39 | 1.58 | 1.68 | 1.71 | 1.77 | 1.77 | 1.76 | 1.61 | 1.46 | 1.30 |  |  |  |  |  |  |
| 90                 | 0.44  | 0.46 | 0.48 | 0.77 | 0.54 | 0.57 | 0.60 | 0.63 | 0.58 | 0.45 | 0.48 | 0.51 |  |  |  |  |  |  |
| 95                 | 0.36  | 0.38 | 0.44 | 0.65 | 0.40 | 0.27 | 0.19 | 0.28 | 0.42 | 0.44 | 0.42 | 0.42 |  |  |  |  |  |  |
| 100                | 0.35  | 0.37 | 0.43 | 0.52 | 0.40 | 0.29 | 0.20 | 0.28 | 0.42 | 0.44 | 0.41 | 0.41 |  |  |  |  |  |  |
| 105                | 0.35  | 0.37 | 0.42 | 0.48 | 0.40 | 0.30 | 0.22 | 0.28 | 0.43 | 0.44 | 0.41 | 0.40 |  |  |  |  |  |  |
| 110                | 0.34  | 0.36 | 0.41 | 0.46 | 0.40 | 0.31 | 0.23 | 0.29 | 0.43 | 0.44 | 0.42 | 0.39 |  |  |  |  |  |  |
| 115                | 0.33  | 0.36 | 0.41 | 0.44 | 0.41 | 0.33 | 0.25 | 0.30 | 0.43 | 0.44 | 0.42 | 0.38 |  |  |  |  |  |  |
| 120                | 0.32  | 0.36 | 0.41 | 0.44 | 0.41 | 0.34 | 0.27 | 0.31 | 0.43 | 0.44 | 0.42 | 0.36 |  |  |  |  |  |  |
| 125                | 0.32  | 0.37 | 0.41 | 0.44 | 0.41 | 0.35 | 0.28 | 0.32 | 0.43 | 0.44 | 0.42 | 0.36 |  |  |  |  |  |  |
| 130                | 0.32  | 0.38 | 0.41 | 0.44 | 0.42 | 0.36 | 0.30 | 0.33 | 0.43 | 0.44 | 0.43 | 0.36 |  |  |  |  |  |  |
| 135                | 0.33  | 0.39 | 0.41 | 0.44 | 0.42 | 0.37 | 0.31 | 0.34 | 0.43 | 0.44 | 0.43 | 0.36 |  |  |  |  |  |  |
| 140                | 0.35  | 0.39 | 0.41 | 0.44 | 0.42 | 0.39 | 0.33 | 0.35 | 0.43 | 0.44 | 0.43 | 0.36 |  |  |  |  |  |  |
| 145                | 0.36  | 0.40 | 0.42 | 0.44 | 0.42 | 0.40 | 0.35 | 0.36 | 0.43 | 0.44 | 0.43 | 0.37 |  |  |  |  |  |  |
| 150                | 0.37  | 0.41 | 0.42 | 0.44 | 0.42 | 0.41 | 0.36 | 0.37 | 0.43 | 0.44 | 0.43 | 0.37 |  |  |  |  |  |  |
| 155                | 0.38  | 0.42 | 0.42 | 0.44 | 0.42 | 0.42 | 0.38 | 0.38 | 0.43 | 0.44 | 0.43 | 0.38 |  |  |  |  |  |  |
| 160                | 0.39  | 0.42 | 0.42 | 0.44 | 0.43 | 0.43 | 0.40 | 0.38 | 0.44 | 0.44 | 0.44 | 0.39 |  |  |  |  |  |  |
| 165                | 0.41  | 0.43 | 0.43 | 0.44 | 0.43 | 0.43 | 0.41 | 0.40 | 0.44 | 0.44 | 0.44 | 0.40 |  |  |  |  |  |  |
| 170                | 0.42  | 0.43 | 0.43 | 0.44 | 0.43 | 0.44 | 0.43 | 0.41 | 0.44 | 0.44 | 0.44 | 0.41 |  |  |  |  |  |  |
| 175                | 0.43  | 0.43 | 0.43 | 0.44 | 0.43 | 0.44 | 0.43 | 0.42 | 0.44 | 0.44 | 0.44 | 0.43 |  |  |  |  |  |  |
| 180                | 0.43  | 0.43 | 0.44 | 0.44 | 0.44 | 0.44 | 0.43 | 0.43 | 0.44 | 0.44 | 0.44 | 0.43 |  |  |  |  |  |  |

C Range: 0 - 360DEG

C Interval: 30.0DEG

Test Speed: HIGH

Temperature:25.3℃

Operators:

Test Date:2025-03-11

γ Range: 0 - 180DEG

γ Interval: 1.0DEG

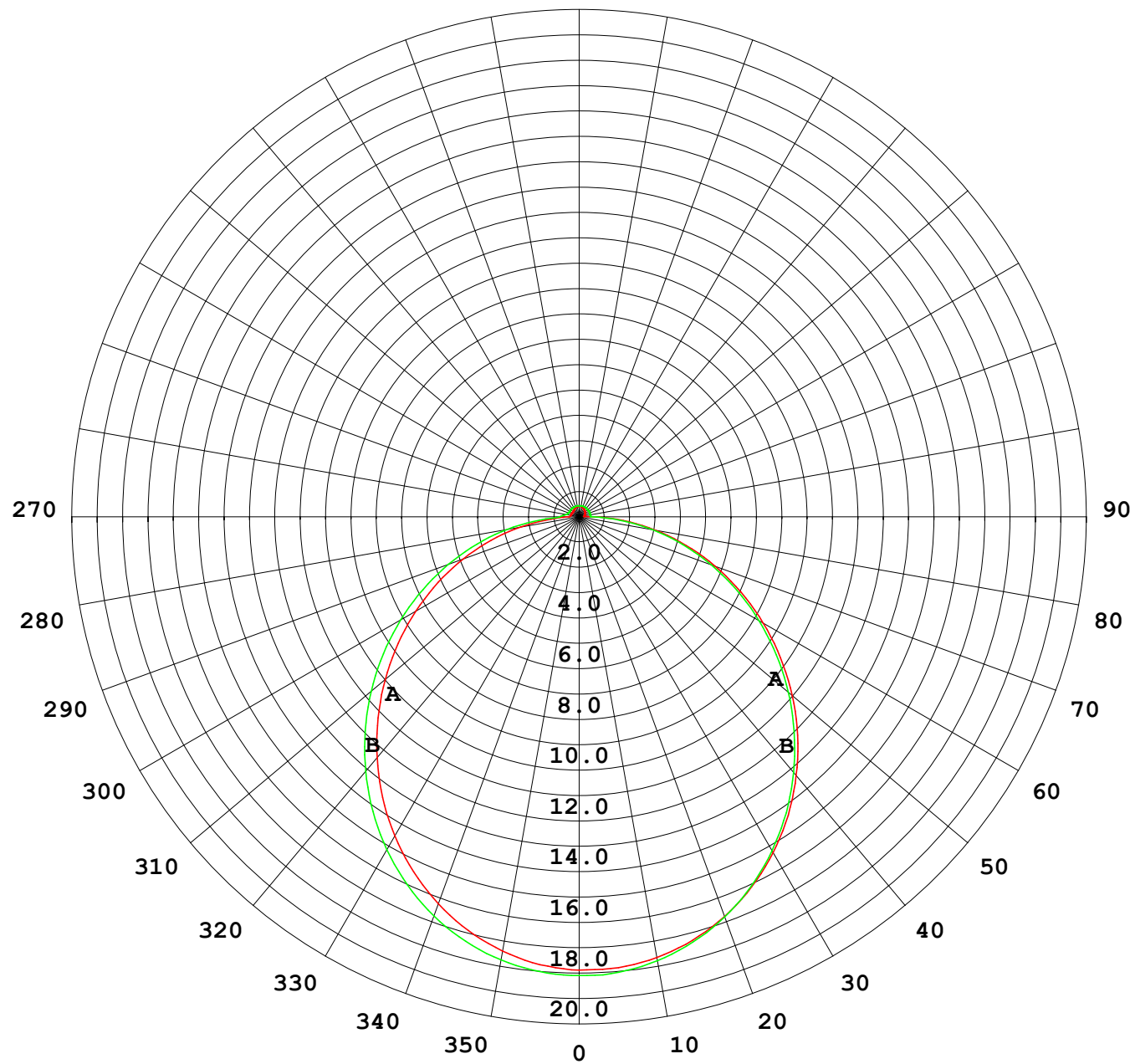
Test System:EVERFINE GO-2000B\_V1 SYSTEM V2.00.488

Humidity:65.0%

Test Distance:6.360m [K=1.0000]

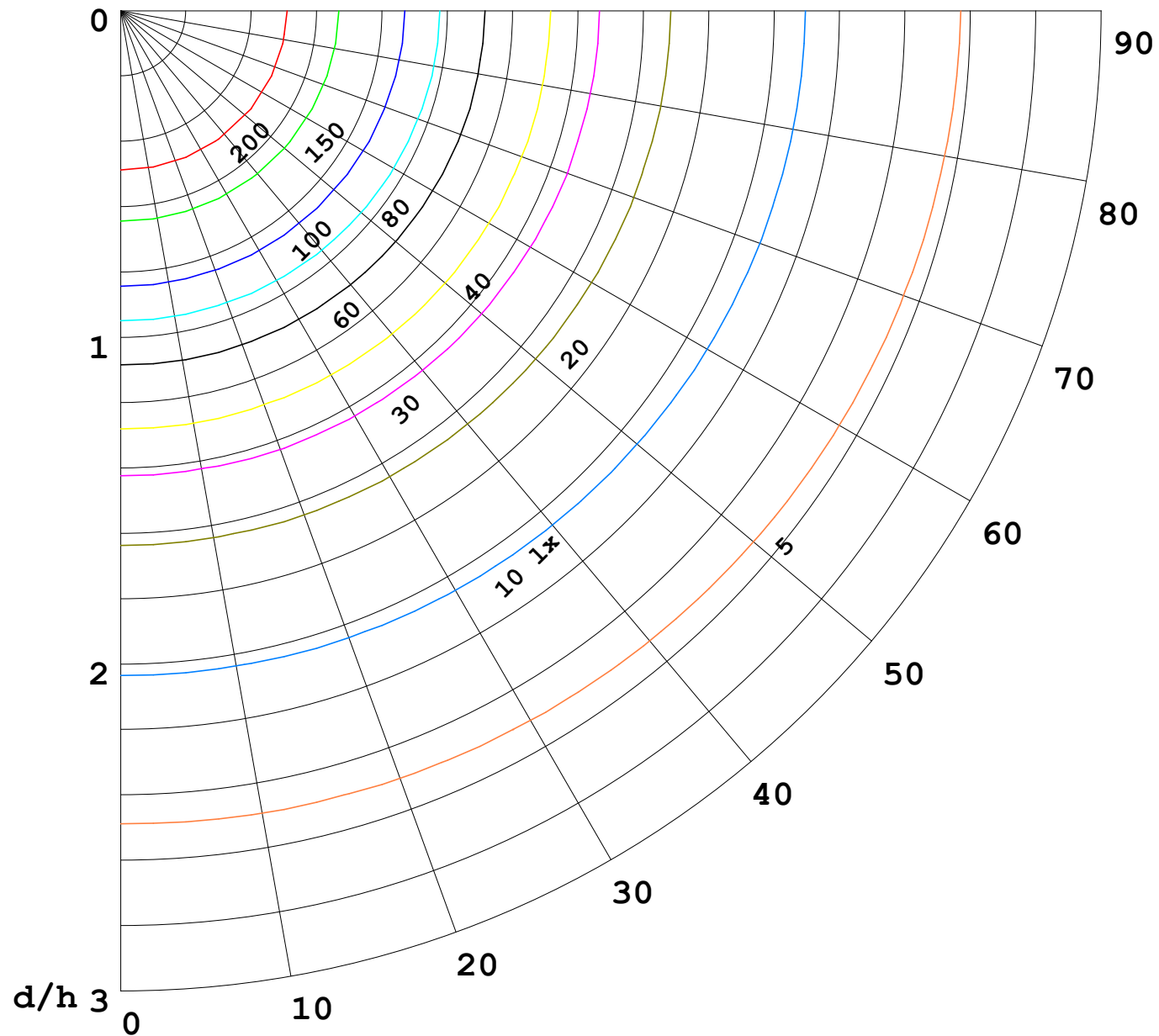
Remarks:

I (cd)



1000 lm

$\kappa = 1$



F = 1000 lm  
 K = 0.7  
 Hcc = 0.8 m  
 Hfc = 0.0 m  
 Eave = 100 lx

|       | Pcc | Pw | Pfc |
|-------|-----|----|-----|
| ————— | 70  | 50 | 30  |
| ————— | 50  | 30 | 20  |

