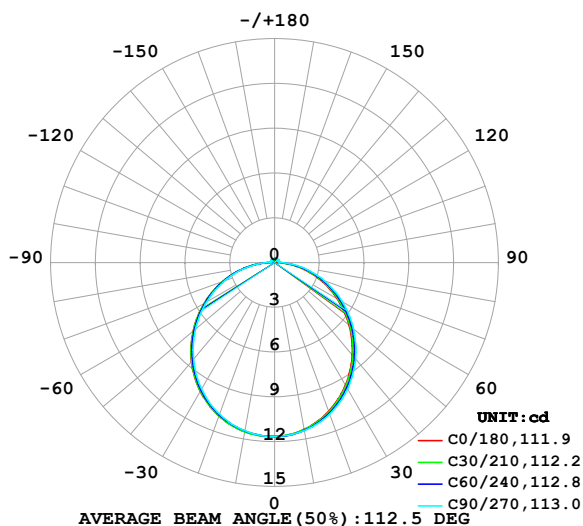


LUMINAIRE PHOTOMETRIC TEST REPORT

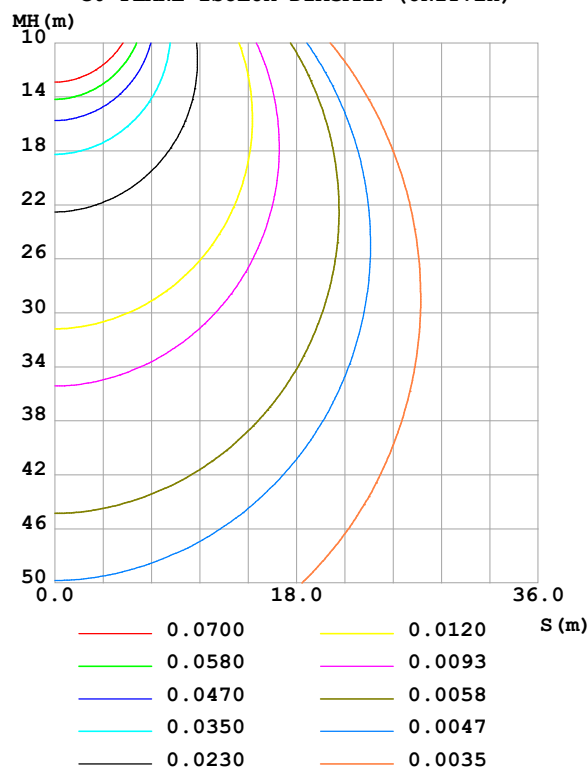
Test:U:24.00V I:0.1762A P:4.229W PF:1.000 Freq:0Hz Lamp Flux:35.7671x1 lm		
NAME: SF17-24v-5050-72-RGB-B	TYPE:	WEIGHT:
SPEC.:	DIM.: Length=1m	SERIAL No.:
MFR.: OLympia lighting	SUR.:	Shielding Angle:

DATA OF LAMP		PHOTOMETRIC DATA				Eff: 8.46 lm/W
MODEL	5050	Imax (cd)	11.66	S/MH(C0/180)	1.27	
NOMINAL POWER(W)		LOR(%)	100.0	S/MH(C90/270)	1.25	
RATED VOLTAGE(V)	24	TOTAL FLUX(lm)	35.767	η UP,DN(C0-180)	2.1,47.4	
NOMINAL FLUX(lm)	35.7671	CIE CLASS	DIRECT	η UP,DN(C180-360)	2.1,48.3	
LAMPS INSIDE	1	η up (%)	4.3	CIBSE SHR NOM	1.25	
TEST VOLTAGE(V)		η down (%)	95.7	CIBSE SHR MAX	1.35	

LUMINOUS INTENSITY DISTRIBUTION DIAGRAM



C0 PLANE ISOLUX DIAGRAM (UNIT:lx)



C Range: 0 - 360DEG
C Interval: 30.0DEG
Test Speed: HIGH
Temperature:25.3℃
Operators:
Test Date:2025-03-11

γ Range: 0 - 180DEG
 γ Interval: 1.0DEG
Test System:EVERFINE GO-2000B_V1 SYSTEM V2.00.488
Humidity:65.0%
Test Distance:6.360m [K=1.0000]
Remarks:

ZONAL FLUX DIAGRAM

ZONAL FLUX DIAGRAM:

γ	C0	C45	C90	C135	C180	C225	C270	C315	γ	Φ zone	Φ total	%lum, lamp
10	11.34	11.39	11.43	11.50	11.50	11.49	11.44	11.39	0- 10	1.102	1.102	3.08,3.08
20	10.59	10.69	10.80	10.91	10.93	10.89	10.81	10.69	10- 20	3.151	4.253	11.9,11.9
30	9.488	9.618	9.774	9.916	9.964	9.910	9.791	9.621	20- 30	4.755	9.008	25.2,25.2
40	8.096	8.242	8.437	8.612	8.669	8.608	8.460	8.262	30- 40	5.710	14.72	41.1,41.1
50	6.517	6.671	6.887	7.061	7.127	7.064	6.916	6.708	40- 50	5.917	20.63	57.7,57.7
60	4.839	5.005	5.227	5.372	5.443	5.393	5.258	5.051	50- 60	5.407	26.04	72.8,72.8
70	3.161	3.313	3.521	3.641	3.699	3.677	3.561	3.367	60- 70	4.304	30.35	84.8,84.8
80	1.515	1.652	1.849	1.925	1.978	1.966	1.881	1.703	70- 80	2.795	33.14	92.7,92.7
90	0.2687	0.2889	0.2887	0.3581	0.3881	0.3913	0.3068	0.3118	80- 90	1.100	34.24	95.7,95.7
100	0.2104	0.2483	0.2829	0.2136	0.1297	0.2223	0.2916	0.2598	90-100	0.2689	34.51	96.5,96.5
110	0.2047	0.2425	0.2800	0.2237	0.1442	0.2223	0.2916	0.2569	100-110	0.2477	34.76	97.2,97.2
120	0.2019	0.2440	0.2771	0.2324	0.1701	0.2281	0.2916	0.2468	110-120	0.2341	34.99	97.8,97.8
130	0.1960	0.2497	0.2771	0.2425	0.1874	0.2339	0.2916	0.2468	120-130	0.2143	35.20	98.4,98.4
140	0.2075	0.2541	0.2685	0.2482	0.2047	0.2411	0.2916	0.2468	130-140	0.1884	35.39	99,99
150	0.2220	0.2570	0.2685	0.2583	0.2278	0.2454	0.2887	0.2482	140-150	0.1563	35.55	99.4,99.4
160	0.2450	0.2642	0.2685	0.2641	0.2508	0.2512	0.2858	0.2526	150-160	0.1183	35.67	99.7,99.7
170	0.2537	0.2642	0.2685	0.2670	0.2652	0.2584	0.2800	0.2598	160-170	0.0740	35.74	99.9,99.9
180	0.2623	0.2656	0.2685	0.2684	0.2652	0.2656	0.2743	0.2699	170-180	0.0253	35.77	100,100
DEG	LUMINOUS INTENSITY:cd									UNIT:lm		

Conical surface Flux(90deg): 17.697 lm

%lum = 49.5%

%lamp = 49.5%

Conical surface Flux(130deg): 28.362 lm

%lum = 79.3%

%lamp = 79.3%

C Range: 0 - 360DEG
 C Interval: 30.0DEG
 Test Speed: HIGH
 Temperature:25.3℃
 Operators:
 Test Date:2025-03-11

γ Range: 0 - 180DEG
 γ Interval: 1.0DEG
 Test System:EVERFINE GO-2000B_V1 SYSTEM V2.00.488
 Humidity:65.0%
 Test Distance:6.360m [K=1.0000]
 Remarks:

LUMINANCE LIMITATION CURVES

Test:U:24.00V I:0.1762A P:4.229W PF:1.000 Freq:0Hz Lamp Flux:35.7671x1 lm		
NAME: SF17-24v-5050-72-RGB-B	TYPE:	WEIGHT:
SPEC.:	DIM.: Length=1m	SERIAL No.:
MFR.: OLympia lighting	SUR.:	Shielding Angle:



LUMINANCE cd/(m2)		
G (DEG)	C0/180	C90/270
85	505	711
80	529	645
75	547	626
70	561	624
65	573	626
60	587	633
55	601	641
50	615	649
45	628	659

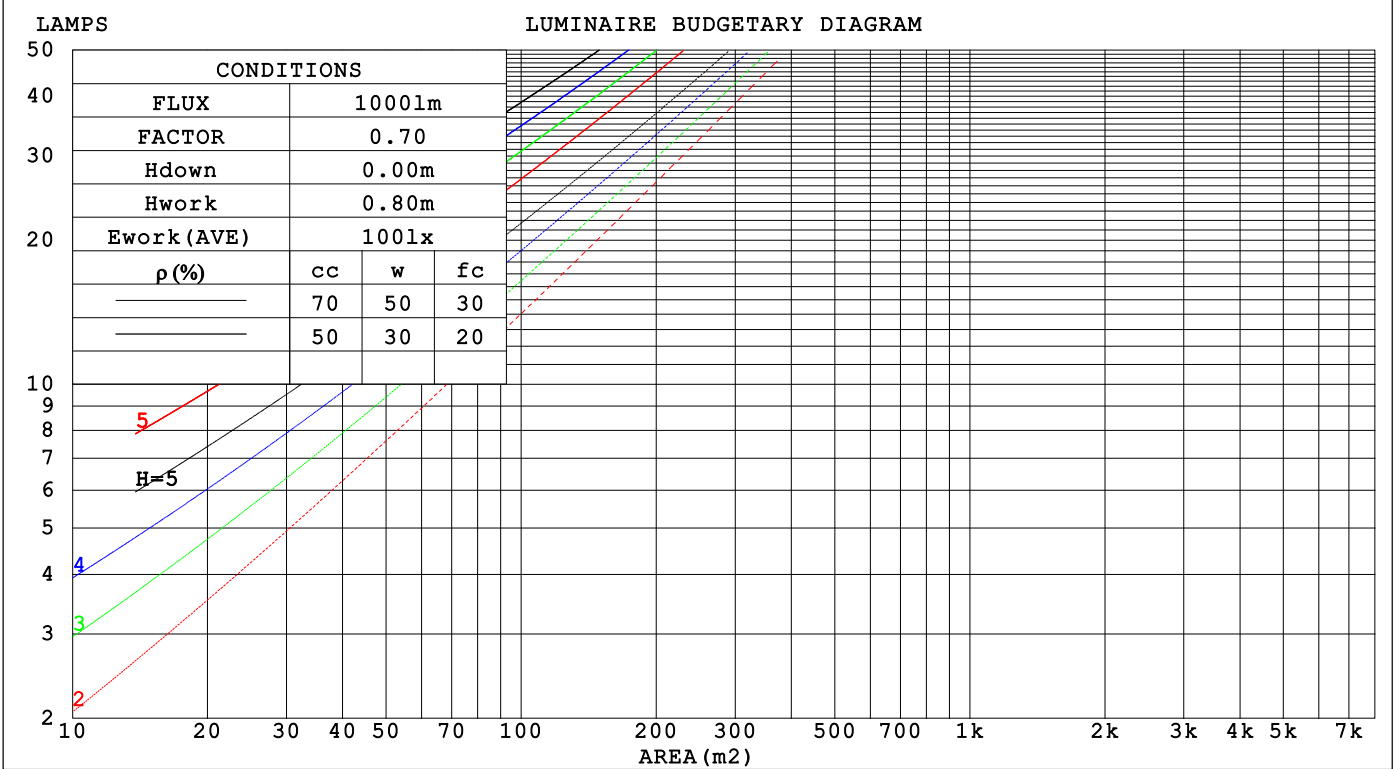
C Range: 0 - 360DEG
C Interval: 30.0DEG
Test Speed: HIGH
Temperature:25.3℃
Operators:
Test Date:2025-03-11

γ Range: 0 - 180DEG
γ Interval: 1.0DEG
Test System:EVERFINE GO-2000B_V1 SYSTEM V2.00.488
Humidity:65.0%
Test Distance:6.360m [K=1.0000]
Remarks:

CU AND LUMINAIRE BUDGETARY ESTIMATE DIAGRAM

Test:U:24.00V I:0.1762A P:4.229W PF:1.000 Freq:0Hz		
Lamp Flux:35.7671x1 lm		
NAME: SF17-24v-5050-72-RGB-B	TYPE:	WEIGHT:
SPEC.:	DIM.: Length=1m	SERIAL No.:
MFR.: OLYMPIA lighting	SUR.:	Shielding Angle:

pcc	80%			70%			50%			30%			10%			0
p _w	50%	30%	10%	50%	30%	10%	50%	30%	10%	50%	30%	10%	50%	30%	10%	0
p _{fc}	20%			20%			20%			20%			20%			0
RCR	RCR:Room Cavity Ratio															



C Range: 0 - 360DEG
C Interval: 30.0DEG
Test Speed: HIGH
Temperature:25.3℃
Operators:
Test Date:2025-03-11

γ Range: 0 - 180DEG
γ Interval: 1.0DEG
Test System:EVERFINE GO-2000B_V1 SYSTEM V2.00.488
Humidity:65.0%
Test Distance:6.360m [K=1.0000]
Remarks:

WEC AND CCEC

Test:U:24.00V I:0.1762A P:4.229W PF:1.000 Freq:0Hz Lamp Flux:35.7671x1 lm		
NAME: SF17-24v-5050-72-RGB-B	TYPE:	WEIGHT:
SPEC.:	DIM.: Length=1m	SERIAL No.:
MFR.: OLympia lighting	SUR.:	Shielding Angle:

pcc	80%			70%			50%			30%			10%			0														
pw	50%	30%	10%	50%	30%	10%	50%	30%	10%	50%	30%	10%	50%	30%	10%	0														
pfc	20%			20%			20%			20%			20%			0														
RCR	RCR:Room Cavity Ratio															Wall Exitance Coefficients(WEC)														
0.0																														
1.0	.327	.186	.059	.318	.182	.058	.303	.174	.055	.288	.166	.053	.275	.159	.051															
2.0	.301	.165	.051	.294	.162	.050	.280	.155	.048	.267	.150	.047	.255	.144	.045															
3.0	.276	.147	.044	.269	.144	.043	.257	.139	.042	.245	.134	.041	.234	.130	.040															
4.0	.253	.131	.039	.247	.129	.038	.236	.125	.037	.225	.121	.037	.216	.117	.036															
5.0	.233	.119	.034	.228	.117	.034	.217	.113	.033	.208	.110	.033	.199	.107	.032															
6.0	.215	.108	.031	.210	.106	.031	.201	.103	.030	.193	.100	.029	.185	.098	.029															
7.0	.200	.099	.028	.196	.097	.028	.188	.095	.027	.180	.092	.027	.173	.090	.026															
8.0	.186	.091	.026	.183	.090	.025	.175	.088	.025	.168	.085	.025	.162	.083	.024															
9.0	.174	.084	.024	.171	.083	.023	.164	.081	.023	.158	.079	.023	.152	.077	.022															
10.0	.164	.079	.022	.161	.078	.022	.155	.076	.021	.149	.074	.021	.143	.072	.021															

pcc	80%			70%			50%			30%			10%			0
pw	50%	30%	10%	50%	30%	10%	50%	30%	10%	50%	30%	10%	50%	30%	10%	0
pfc	20%			20%			20%			20%			20%			0
RCR	RCR:Room Cavity Ratio						Ceiling Cavity Exitance Coefficients (CCEC)									
0.0	.223	.223	.223	.191	.191	.191	.130	.130	.130	.075	.075	.075	.024	.024	.024	
1.0	.214	.189	.166	.183	.162	.143	.125	.111	.099	.072	.065	.057	.023	.021	.019	
2.0	.207	.165	.130	.177	.142	.112	.121	.098	.078	.070	.057	.046	.022	.018	.015	
3.0	.199	.148	.107	.170	.127	.092	.117	.088	.065	.068	.052	.038	.022	.017	.013	
4.0	.191	.134	.091	.164	.116	.079	.113	.081	.056	.065	.047	.033	.021	.015	.011	
5.0	.184	.124	.080	.158	.107	.070	.109	.075	.049	.063	.044	.029	.020	.014	.010	
6.0	.176	.116	.072	.152	.100	.063	.105	.070	.045	.061	.041	.027	.020	.014	.009	
7.0	.169	.109	.067	.146	.095	.058	.101	.066	.041	.059	.039	.025	.019	.013	.008	
8.0	.163	.103	.062	.140	.090	.054	.097	.063	.039	.056	.037	.023	.018	.012	.008	
9.0	.157	.098	.059	.135	.085	.051	.094	.060	.036	.055	.035	.022	.018	.012	.007	
10.0	.151	.094	.056	.130	.082	.049	.090	.058	.035	.053	.034	.021	.017	.011	.007	

C Range: 0 - 360DEG
C Interval: 30.0DEG
Test Speed: HIGH
Temperature:25.3℃
Operators:
Test Date:2025-03-11

γ Range: 0 - 180DEG
γ Interval: 1.0DEG
Test System:EVERFINE GO-2000B_V1 SYSTEM V2.00.488
Humidity:65.0%
Test Distance:6.360m [K=1.0000]
Remarks:

UGR(Unified Glare Rating) Table

Test:U:24.00V I:0.1762A P:4.229W PF:1.000 Freq:0Hz Lamp Flux:35.767lx1 lm											
NAME: SF17-24v-5050-72-RGB-B					TYPE:			WEIGHT:			
SPEC.:					DIM.: Length=1m			SERIAL No.:			
MFR.: OLympia lighting					SUR.:			Shielding Angle:			
ceiling/cavity	0.7	0.7	0.5	0.5	0.3	0.7	0.7	0.5	0.5	0.3	
walls	0.5	0.3	0.5	0.3	0.3	0.5	0.3	0.5	0.3	0.3	
working plane	0.2	0.2	0.2	0.2	0.2	0.2	0.2	0.2	0.2	0.2	
Room dimensions		Viewed crosswise					Viewed endwise				
x = 2H y = 2H	2H	22.1	23.6	22.5	23.9	24.2	22.4	23.9	22.8	24.2	24.5
	3H	23.7	25.1	24.1	25.4	25.7	24.1	25.5	24.5	25.8	26.1
	4H	24.4	25.7	24.8	26.1	26.4	24.9	26.2	25.3	26.5	26.9
	6H	25.0	26.2	25.4	26.6	26.9	25.6	26.8	26.0	27.1	27.5
	8H	25.2	26.4	25.6	26.7	27.1	25.8	27.0	26.2	27.4	27.8
	12H	25.3	26.5	25.7	26.8	27.2	26.1	27.2	26.5	27.6	28.0
4H	2H	22.8	24.1	23.2	24.4	24.8	23.0	24.3	23.4	24.6	25.0
	3H	24.6	25.7	25.0	26.1	26.5	24.9	26.1	25.3	26.4	26.8
	4H	25.4	26.5	25.9	26.9	27.3	25.8	26.9	26.3	27.3	27.7
	6H	26.1	27.0	26.6	27.5	27.9	26.6	27.6	27.1	28.0	28.5
	8H	26.4	27.2	26.8	27.7	28.2	27.0	27.9	27.5	28.3	28.8
	12H	26.6	27.4	27.1	27.8	28.3	27.3	28.1	27.8	28.5	29.0
8H	4H	25.8	26.6	26.2	27.1	27.5	26.1	27.0	26.6	27.4	27.9
	6H	26.6	27.4	27.1	27.8	28.4	27.1	27.8	27.6	28.3	28.8
	8H	27.0	27.6	27.5	28.1	28.7	27.6	28.2	28.1	28.7	29.3
	12H	27.3	27.8	27.8	28.4	28.9	28.0	28.6	28.5	29.1	29.6
12H	4H	25.8	26.6	26.3	27.1	27.6	26.1	26.9	26.6	27.4	27.9
	6H	26.7	27.4	27.3	27.9	28.4	27.2	27.8	27.7	28.3	28.9
	8H	27.2	27.7	27.7	28.2	28.8	27.7	28.3	28.3	28.8	29.4
Variations with the observer position at spacings(CIE Pub.117):											
S = 1.0H		+ 0.1 / - 0.2					+ 0.1 / - 0.2				
1.5H		+ 0.2 / - 0.3					+ 0.2 / - 0.3				
2.0H		+ 0.1 / - 0.3					+ 0.1 / - 0.2				

CIE Pub.117, 35.77 lm Total Lamp Luminous Flux Correct (8log(F/F0) = -11.6)
Area: 0.0165 m2

C Range: 0 - 360DEG
C Interval: 30.0DEG
Test Speed: HIGH
Temperature:25.3℃
Operators:
Test Date:2025-03-11

γ Range: 0 - 180DEG
γ Interval: 1.0DEG
Test System:EVERFINE GO-2000B_V1 SYSTEM V2.00.488
Humidity:65.0%
Test Distance:6.360m [K=1.0000]
Remarks:

UTILIZATION FACTORS TABLE

Test:U:24.00V I:0.1762A P:4.229W PF:1.000 Freq:0Hz Lamp Flux:35.7671x1 lm		
NAME: SF17-24v-5050-72-RGB-B	TYPE:	WEIGHT:
SPEC.:	DIM.: Length=1m	SERIAL No.:
MFR.: OLympia lighting	SUR.:	Shielding Angle:

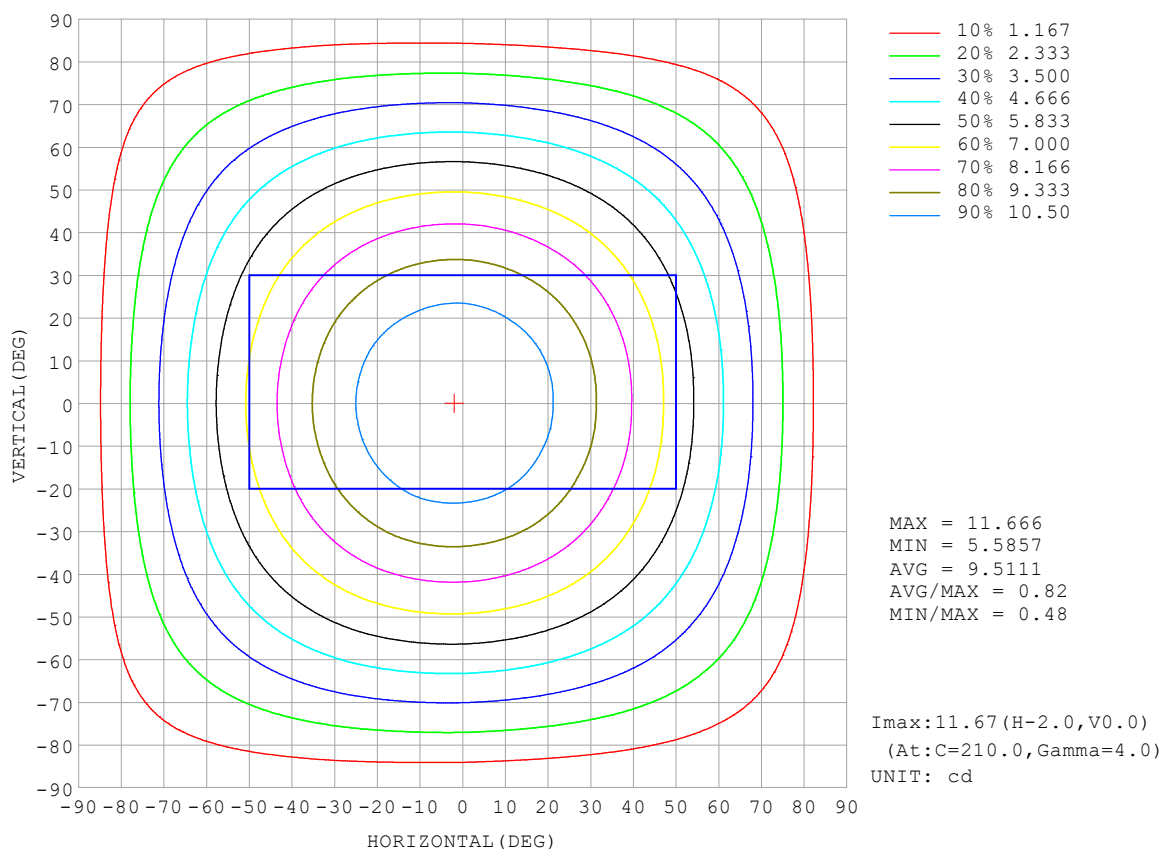
REFLECTANCE										
Ceiling	0.8	0.8	0.8	0.7	0.7	0.7	0.5	0.5	0.5	0
Walls	0.7	0.5	0.3	0.7	0.5	0.3	0.7	0.5	0.3	0
Working plane	0.2	0.2	0.2	0.2	0.2	0.2	0.2	0.2	0.2	0
ROOM INDEX	UTILIZATION FACTORS (PERCENT) $k(RI) \times RCR = 5$									
$k = 0.60$	55	44	37	55	43	37	53	43	36	30
0.80	65	53	46	64	53	46	62	52	45	38
1.00	74	62	55	72	61	54	69	62	53	46
1.25	81	70	62	79	69	62	76	67	61	53
1.50	86	75	68	84	74	67	80	72	66	58
2.00	93	83	77	90	82	76	86	79	74	65
2.50	97	88	82	94	87	81	90	83	78	69
3.00	100	93	87	97	91	85	93	87	83	73
4.00	104	98	93	101	96	91	96	92	88	78
5.00	107	101	97	104	99	95	99	95	91	81
ROOM INDEX	UF (total)									Direct
According to DIN EN 13032-2 2004			Suspended					SHRNOM = 1.25		

C Range: 0 - 360DEG
 C Interval: 30.0DEG
 Test Speed: HIGH
 Temperature: 25.3°C
 Operators:
 Test Date: 2025-03-11

γ Range: 0 - 180DEG
 γ Interval: 1.0DEG
 Test System: EVERFINE GO-2000B_V1 SYSTEM V2.00.488
 Humidity: 65.0%
 Test Distance: 6.360m [K=1.0000]
 Remarks:

ISOCANDELA DIAGRAM

Test:U:24.00V I:0.1762A P:4.229W PF:1.000 Freq:0Hz Lamp Flux:35.767lx1 lm		
NAME: SF17-24v-5050-72-RGB-B	TYPE:	WEIGHT:
SPEC.:	DIM.: Length=1m	SERIAL No.:
MFR.: OLympia lighting	SUR.:	Shielding Angle:

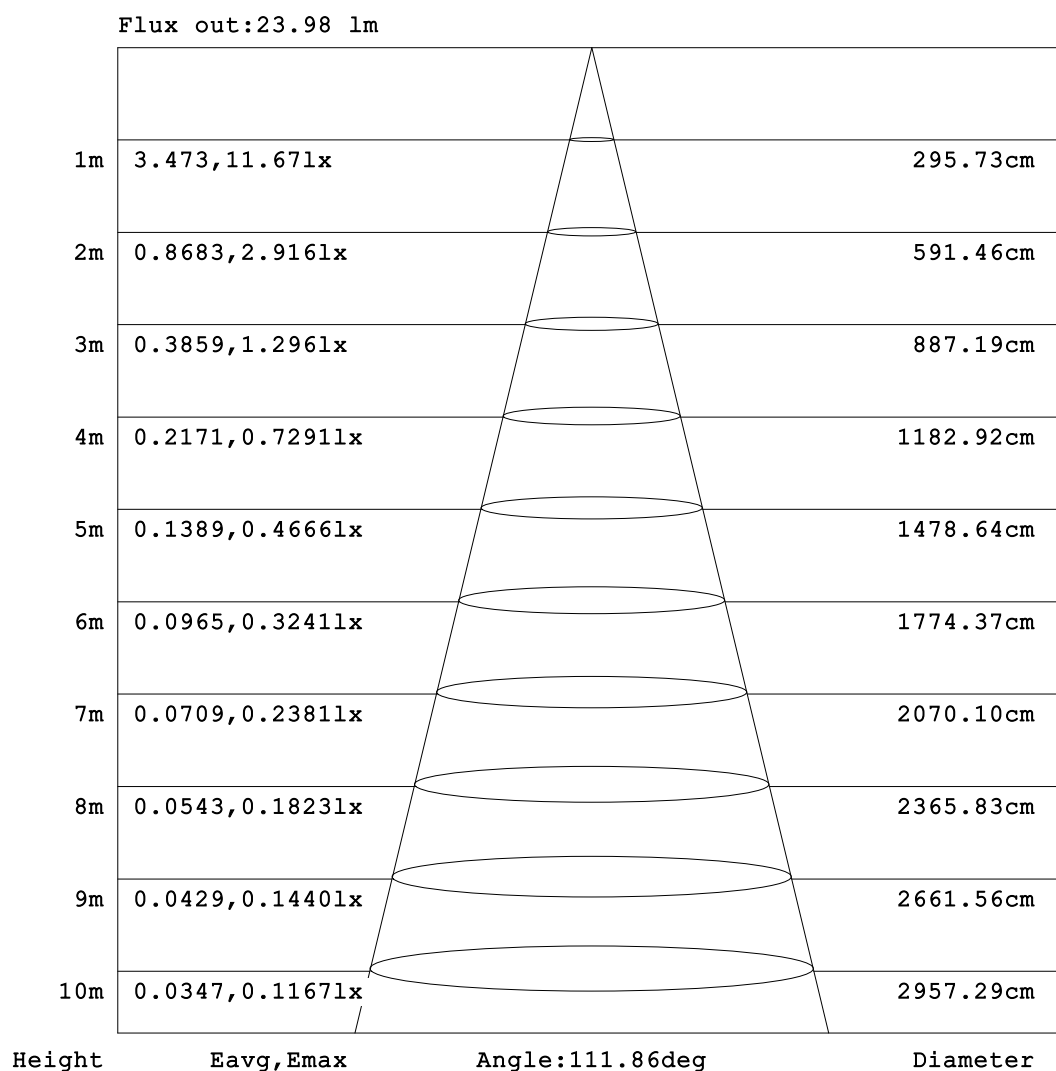


C Range: 0 - 360DEG
C Interval: 30.0DEG
Test Speed: HIGH
Temperature:25.3℃
Operators:
Test Date:2025-03-11

γ Range: 0 - 180DEG
γ Interval: 1.0DEG
Test System:EVERFINE GO-2000B_V1 SYSTEM V2.00.488
Humidity:65.0%
Test Distance:6.360m [K=1.0000]
Remarks:

AAI Figure

Test:U:24.00V I:0.1762A P:4.229W PF:1.000 Freq:0Hz Lamp Flux:35.767lx1 lm		
NAME: SF17-24v-5050-72-RGB-B	TYPE:	WEIGHT:
SPEC.:	DIM.: Length=1m	SERIAL No.:
MFR.: OLympia lighting	SUR.:	Shielding Angle:



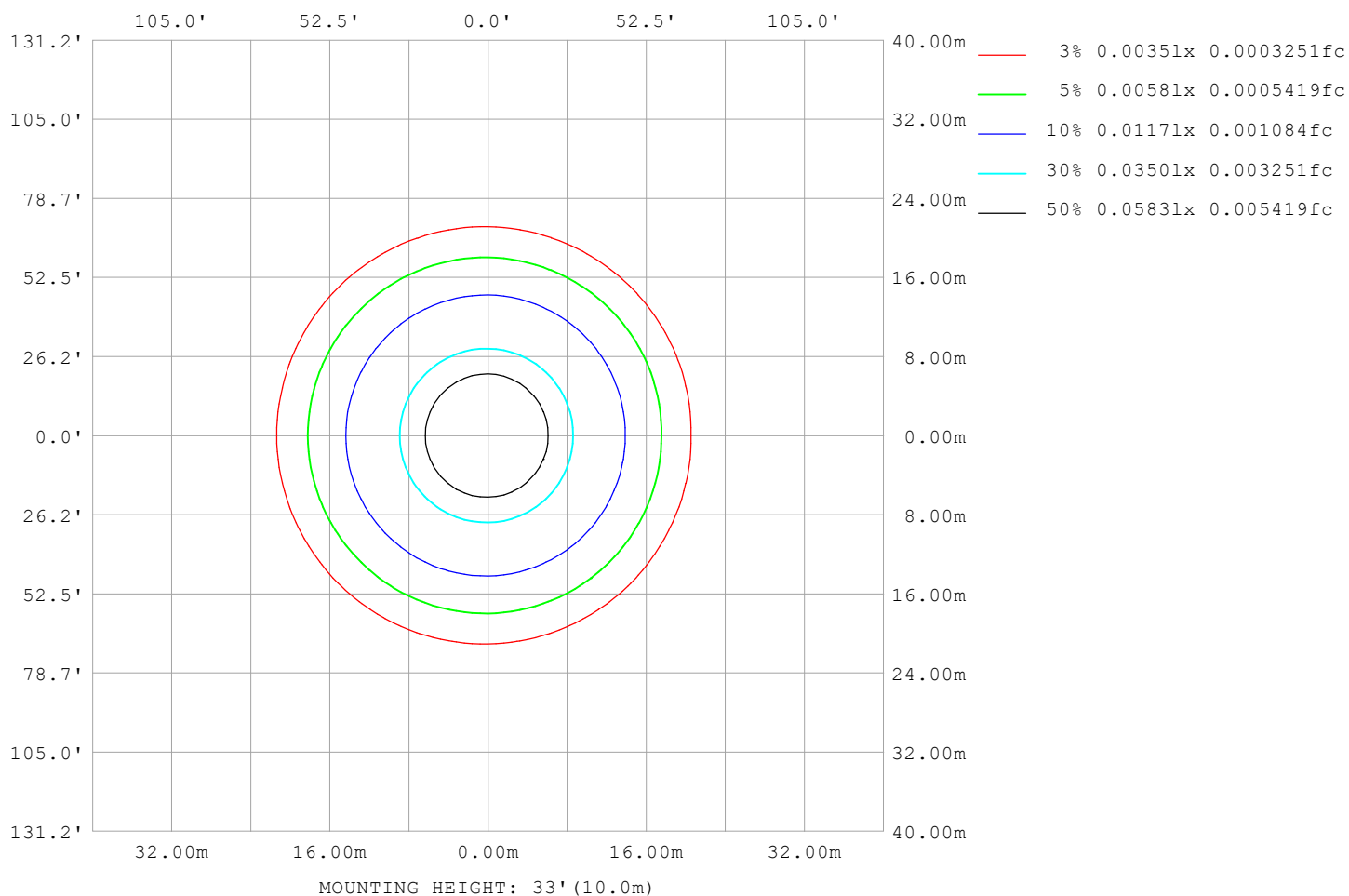
Note:The Curves indicate the illuminated area and the average illumination when the luminaire is at different distance.

C Range: 0 - 360DEG
C Interval: 30.0DEG
Test Speed: HIGH
Temperature:25.3℃
Operators:
Test Date:2025-03-11

γ Range: 0 - 180DEG
γ Interval: 1.0DEG
Test System:EVERFINE GO-2000B_V1 SYSTEM V2.00.488
Humidity:65.0%
Test Distance:6.360m [K=1.0000]
Remarks:

ISOLUX DIAGRAM

Test:U:24.00V I:0.1762A P:4.229W PF:1.000 Freq:0Hz Lamp Flux:35.767lx 1m		
NAME: SF17-24v-5050-72-RGB-B	TYPE:	WEIGHT:
SPEC.:	DIM.: Length=1m	SERIAL No.:
MFR.: OLympia lighting	SUR.:	Shielding Angle:



C Range: 0 - 360DEG
C Interval: 30.0DEG
Test Speed: HIGH
Temperature: 25.3°C
Operators:
Test Date: 2025-03-11

γ Range: 0 - 180DEG
γ Interval: 1.0DEG
Test System: EVERFINE GO-2000B_V1 SYSTEM V2.00.488
Humidity: 65.0%
Test Distance: 6.360m [K=1.0000]
Remarks:

LED Avg.L Report

Test:U:24.00V I:0.1762A P:4.229W PF:1.000 Freq:0Hz Lamp Flux:35.7671x1 lm		
NAME: SF17-24v-5050-72-RGB-B	TYPE:	WEIGHT:
SPEC.:	DIM.: Length=1m	SERIAL No.:
MFR.: OLympia lighting	SUR.:	Shielding Angle:

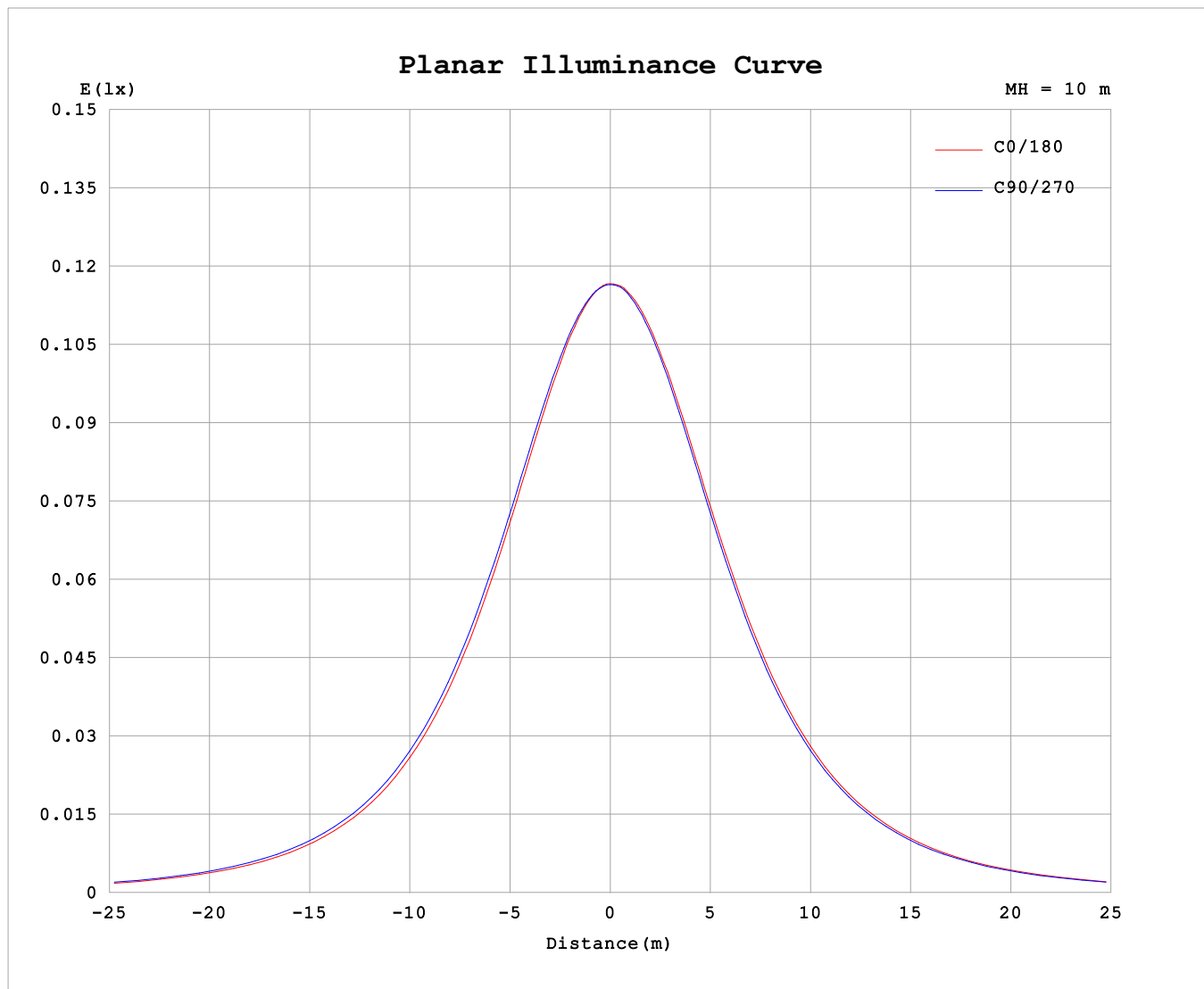
AvgL	cd/m2
L_0~180 (65) av	614
L_0~180 (75) av	604
L_0~180 (85) av	648
L_90~270 (65) av	629
L_90~270 (75) av	631
L_90~270 (85) av	723
L_45 (65) av	624
L_45 (75) av	621
L_45 (85) av	688

Standard: GB/T 29293-2012

C Range: 0 - 360DEG
C Interval: 30.0DEG
Test Speed: HIGH
Temperature:25.3℃
Operators:
Test Date:2025-03-11

γ Range: 0 - 180DEG
γ Interval: 1.0DEG
Test System:EVERFINE GO-2000B_V1 SYSTEM V2.00.488
Humidity:65.0%
Test Distance:6.360m [K=1.0000]
Remarks:

Planar Illuminance Curve



C Range: 0 - 360DEG
C Interval: 30.0DEG
Test Speed: HIGH
Temperature: 25.3 °C
Operators:
Test Date: 2025-03-11

γ Range: 0 - 180DEG
 γ Interval: 1.0DEG
Test System: EVERFINE GO-2000B_V1 SYSTEM V2.00.488
Humidity: 65.0%
Test Distance: 6.360m [K=1.0000]
Remarks:

LUMINOUS DISTRIBUTION INTENSITY DATA

Test:U:24.00V I:0.1762A P:4.229W PF:1.000 Freq:0Hz Lamp Flux:35.7671x1 lm		
NAME: SF17-24v-5050-72-RGB-B	TYPE:	WEIGHT:
SPEC.:	DIM.: Length=1m	SERIAL No.:
MFR.: Olym pia lighting	SUR.:	Shielding Angle:

Table--1

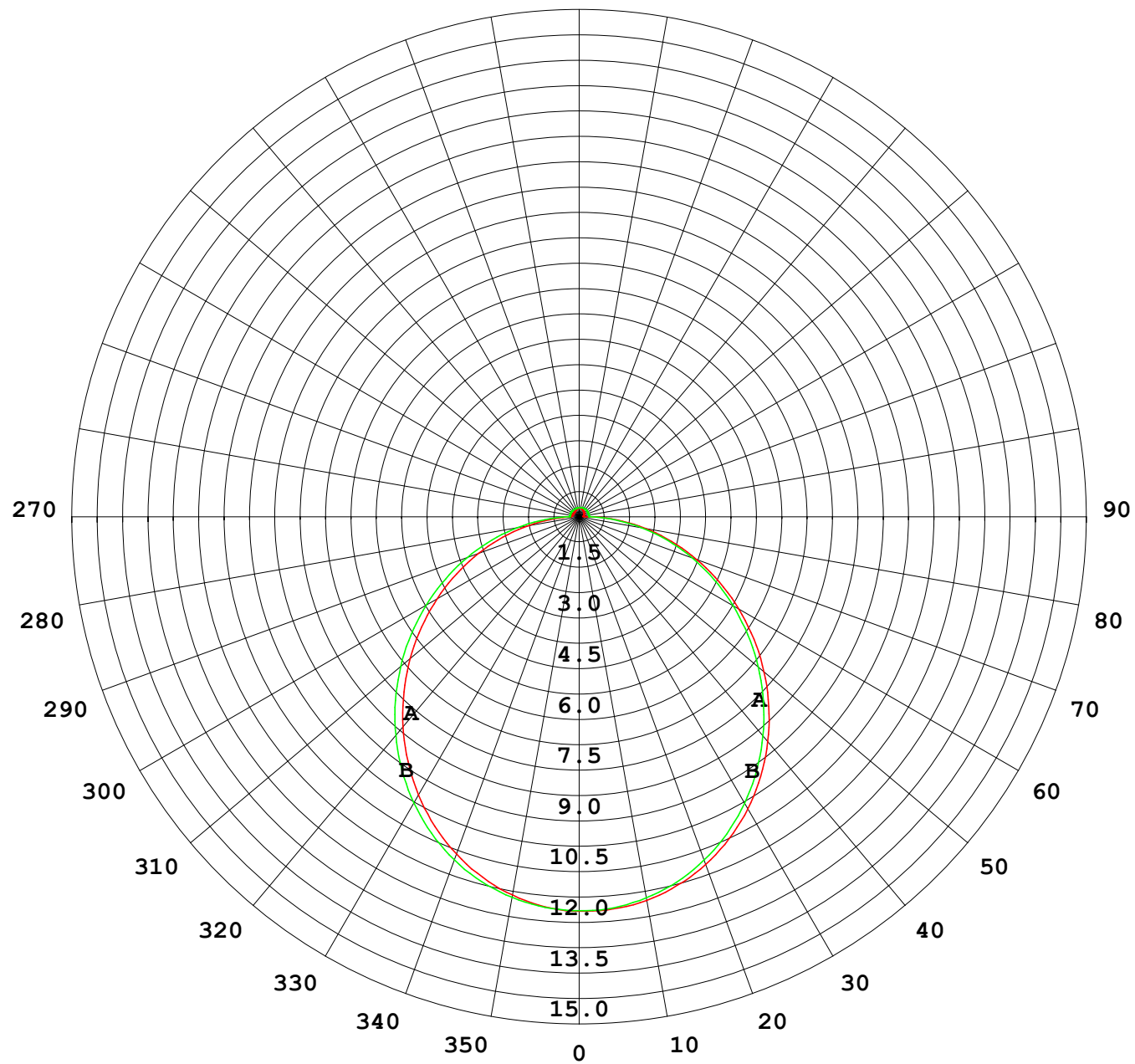
UNIT: cd

C (DEG) γ (DEG)	0	30	60	90	120	150	180	210	240	270	300	330							
0	11.7	11.7	11.7	11.7	11.7	11.7	11.7	11.7	11.7	11.7	11.7	11.7							
5	11.6	11.6	11.6	11.6	11.6	11.6	11.6	11.7	11.6	11.6	11.6	11.6							
10	11.3	11.4	11.4	11.4	11.5	11.5	11.5	11.5	11.5	11.4	11.4	11.4							
15	11.0	11.1	11.1	11.2	11.3	11.3	11.3	11.3	11.2	11.2	11.1	11.1							
20	10.6	10.6	10.7	10.8	10.9	10.9	10.9	10.9	10.9	10.8	10.7	10.7							
25	10.1	10.1	10.2	10.3	10.4	10.5	10.5	10.5	10.4	10.3	10.2	10.2							
30	9.49	9.55	9.68	9.77	9.90	9.93	9.96	9.95	9.87	9.79	9.67	9.57							
35	8.82	8.89	9.03	9.14	9.28	9.33	9.36	9.34	9.25	9.16	9.03	8.91							
40	8.10	8.17	8.31	8.44	8.58	8.64	8.67	8.65	8.57	8.46	8.33	8.20							
45	7.32	7.40	7.54	7.69	7.83	7.89	7.92	7.90	7.82	7.71	7.57	7.43							
50	6.52	6.60	6.75	6.89	7.03	7.09	7.13	7.10	7.03	6.92	6.78	6.64							
55	5.68	5.76	5.92	6.07	6.20	6.26	6.30	6.28	6.21	6.10	5.95	5.81							
60	4.84	4.92	5.09	5.23	5.35	5.40	5.44	5.43	5.36	5.26	5.12	4.98							
65	3.99	4.08	4.23	4.37	4.49	4.53	4.58	4.56	4.51	4.41	4.27	4.13							
70	3.16	3.24	3.39	3.52	3.62	3.66	3.70	3.70	3.66	3.56	3.43	3.30							
75	2.33	2.41	2.55	2.67	2.76	2.80	2.83	2.83	2.81	2.72	2.59	2.46							
80	1.52	1.59	1.72	1.85	1.92	1.93	1.98	1.98	1.95	1.88	1.76	1.65							
85	0.73	0.79	0.91	1.02	1.08	1.10	1.14	1.14	1.13	1.06	0.94	0.83							
90	0.27	0.27	0.31	0.29	0.35	0.37	0.39	0.41	0.37	0.31	0.30	0.32							
95	0.22	0.23	0.27	0.29	0.25	0.17	0.12	0.18	0.27	0.29	0.27	0.26							
100	0.21	0.23	0.27	0.28	0.25	0.18	0.13	0.18	0.27	0.29	0.27	0.25							
105	0.21	0.22	0.27	0.28	0.25	0.19	0.13	0.18	0.27	0.29	0.27	0.25							
110	0.20	0.22	0.26	0.28	0.25	0.20	0.14	0.18	0.27	0.29	0.27	0.25							
115	0.20	0.22	0.26	0.28	0.25	0.21	0.16	0.18	0.27	0.29	0.27	0.24							
120	0.20	0.23	0.26	0.28	0.25	0.22	0.17	0.19	0.27	0.29	0.27	0.23							
125	0.20	0.23	0.26	0.28	0.25	0.22	0.18	0.19	0.27	0.29	0.27	0.23							
130	0.20	0.24	0.26	0.28	0.25	0.23	0.19	0.20	0.27	0.29	0.27	0.23							
135	0.20	0.24	0.26	0.27	0.25	0.24	0.20	0.20	0.27	0.29	0.27	0.23							
140	0.21	0.25	0.26	0.27	0.25	0.24	0.20	0.21	0.27	0.29	0.27	0.23							
145	0.21	0.25	0.26	0.27	0.25	0.25	0.22	0.22	0.27	0.29	0.27	0.23							
150	0.22	0.25	0.26	0.27	0.26	0.26	0.23	0.22	0.27	0.29	0.27	0.23							
155	0.24	0.26	0.26	0.27	0.26	0.26	0.24	0.23	0.27	0.29	0.27	0.23							
160	0.24	0.27	0.26	0.27	0.26	0.27	0.25	0.23	0.27	0.29	0.27	0.24							
165	0.25	0.27	0.26	0.27	0.27	0.27	0.26	0.24	0.27	0.29	0.27	0.24							
170	0.25	0.27	0.26	0.27	0.27	0.27	0.27	0.25	0.27	0.28	0.27	0.25							
175	0.26	0.27	0.26	0.27	0.27	0.27	0.27	0.25	0.27	0.27	0.27	0.26							
180	0.26	0.27	0.27	0.27	0.27	0.27	0.27	0.27	0.27	0.27	0.27	0.27							

C Range: 0 - 360DEG
C Interval: 30.0DEG
Test Speed: HIGH
Temperature:25.3℃
Operators:
Test Date:2025-03-11

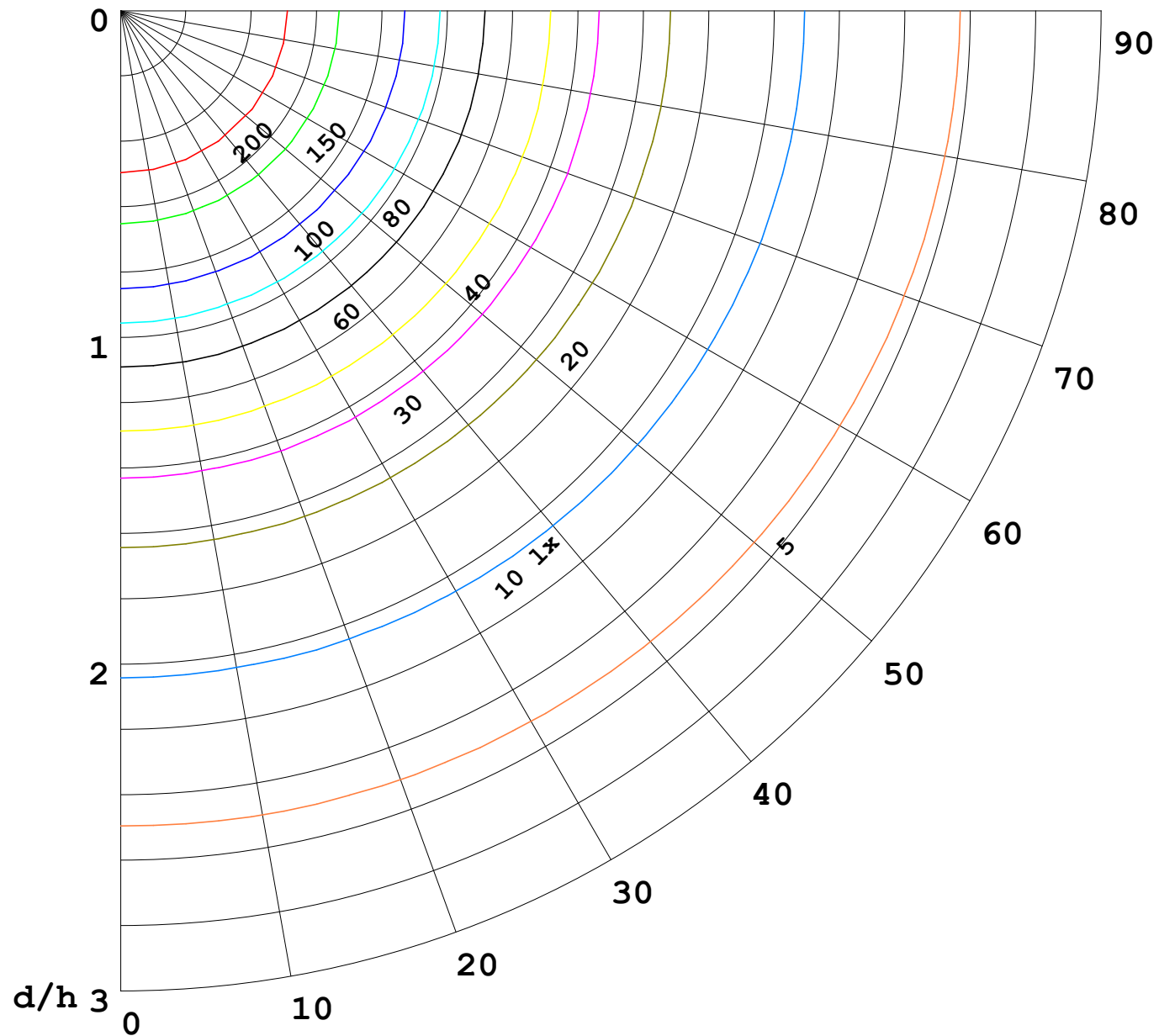
γ Range: 0 - 180DEG
γ Interval: 1.0DEG
Test System:EVERFINE GO-2000B_V1 SYSTEM V2.00.488
Humidity:65.0%
Test Distance:6.360m [K=1.0000]
Remarks:

I (cd)



1000 lm

$\kappa = 1$



F = 1000 lm
 K = 0.7
 Hcc = 0.8 m
 Hfc = 0.0 m
 Eave = 100 lx

	Pcc	Pw	Pfc
—————	70	50	30
—————	50	30	20

