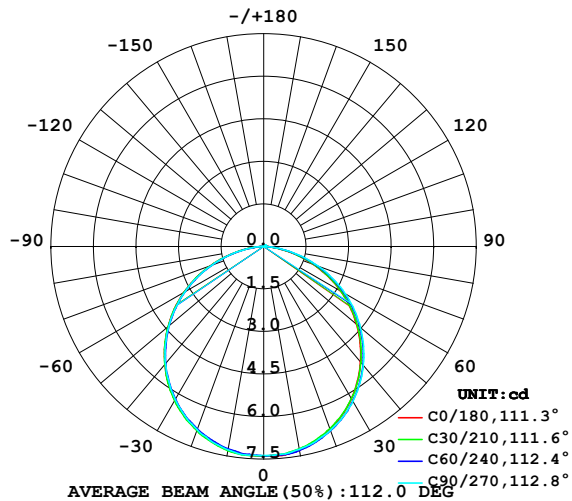


LUMINAIRE PHOTOMETRIC TEST REPORT

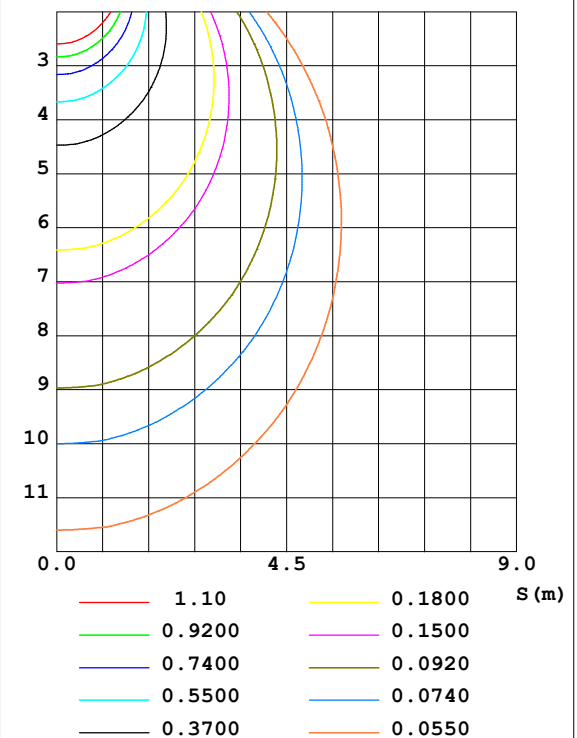
Test:U:24.00V I:0.2430A P:5.832W PF:1.000 Lamp Flux:21.04x1 lm		
NAME: SF17-24V-5050-70-DMX3-RGB-B	TYPE: 硅胶	WEIGHT:
DIM.: 16.5MM*16.5MM	SPEC.:	SERIAL No.:202309011
MFR.: OLYMPIA	SUR.:1.0*0.0165	PROTECTION ANGLE:

DATA OF LAMP		PHOTOMETRIC DATA				Eff: 3.61 lm/W
MODEL	5050	I _{max} (cd)	7.403	S/MH (C0/180)	1.24	
NOMINAL POWER (W)	13	LOR (%)	100.0	S/MH (C90/270)	1.27	
RATED VOLTAGE (V)	24	TOTAL FLUX (lm)	21.040	η UP, DN (C0-180)	0.6, 49.9	
NOMINAL FLUX (lm)	21.04	CIE CLASS	DIRECT	η UP, DN (C180-360)	0.2, 49.3	
LAMPS INSIDE	1	η up (%)	0.8	CIBSE SHR NOM	1.25	
TEST VOLTAGE (V)	24	η down (%)	99.2	CIBSE SHR MAX	1.35	

LUMINOUS INTENSITY DISTRIBUTION DIAGRAM



C0 PLANE ISOLUX DIAGRAM (UNIT:lx)



C Range: 0 - 360DEG
C Interval: 30.0DEG
Test Speed: HIGH
Temperature: 25.3DEG
Operators:
Test Date: 2023-09-19

γ Range: 0 - 180DEG
γ Interval: 1.0DEG
Test System: EVERFINE GO-2000B_V1 SYSTEM V2.0.269
Humidity: 65.0%
Test Distance: 9.200m [K=1.0000]
Remarks:

ZONAL FLUX DIAGRAM AND LUMINANCE LIMITATION CURVES

ZONAL FLUX DIAGRAM:

γ	C0	C45	C90	C135	C180	C225	C270	C315	γ	Φ zone	Φ total	%lum, lamp
10	7.288	7.275	7.262	7.287	7.277	7.275	7.283	7.240	0- 10	0.7001	0.7001	3.33,3.33
20	6.851	6.870	6.895	6.918	6.890	6.880	6.871	6.817	10- 20	2.005	2.705	12.9,12.9
30	6.188	6.245	6.297	6.317	6.271	6.252	6.243	6.167	20- 30	3.037	5.742	27.3,27.3
40	5.313	5.393	5.472	5.468	5.422	5.403	5.393	5.310	30- 40	3.655	9.397	44.7,44.7
50	4.273	4.363	4.457	4.460	4.396	4.385	4.368	4.287	40- 50	3.780	13.18	62.6,62.6
60	3.117	3.211	3.321	3.299	3.245	3.231	3.207	3.133	50- 60	3.405	16.58	78.8,78.8
70	1.866	1.950	2.044	2.033	1.994	1.972	1.951	1.897	60- 70	2.570	19.15	91,91
80	0.6846	0.7189	0.7980	0.7816	0.7576	0.7361	0.7296	0.6808	70- 80	1.413	20.57	97.7,97.7
90	0.0203	0.0353	0.0603	0.0328	0	0.0102	0.0202	0.0001	80- 90	0.3124	20.88	99.2,99.2
100	0	0.0352	0.0603	0.0276	0	0.0025	0.0151	0.0025	90-100	0.0183	20.90	99.3,99.3
110	0	0.0402	0.0603	0.0302	0	0.0075	0.0151	0.0075	100-110	0.0204	20.92	99.4,99.4
120	0	0.0477	0.0603	0.0352	0	0.0101	0.0151	0.0101	110-120	0.0219	20.94	99.5,99.5
130	0	0.0528	0.0603	0.0402	0.0151	0.0151	0.0151	0.0151	120-130	0.0229	20.96	99.6,99.6
140	0	0.0528	0.0603	0.0427	0.0251	0.0201	0.0151	0.0201	130-140	0.0229	20.98	99.7,99.7
150	0.0151	0.0528	0.0603	0.0477	0.0402	0.0301	0.0151	0.0251	140-150	0.0210	21.00	99.8,99.8
160	0.0352	0.0528	0.0603	0.0503	0.0503	0.0326	0.0302	0.0301	150-160	0.0180	21.02	99.9,99.9
170	0.0502	0.0528	0.0603	0.0503	0.0503	0.0452	0.0352	0.0427	160-170	0.0128	21.04	100,100
180	0.0503	0.0528	0.0603	0.0528	0.0503	0.0503	0.0452	0.0503	170-180	0.0047	21.04	100,100
DEG	LUMINOUS INTENSITY:cd									UNIT:lm		



LUMINANCE cd/(m2)		
G (DEG)	C0/180	C90/270
85	154	199
80	239	279
75	296	334
70	331	362
65	359	385
60	378	403
55	392	413
50	403	420
45	413	427

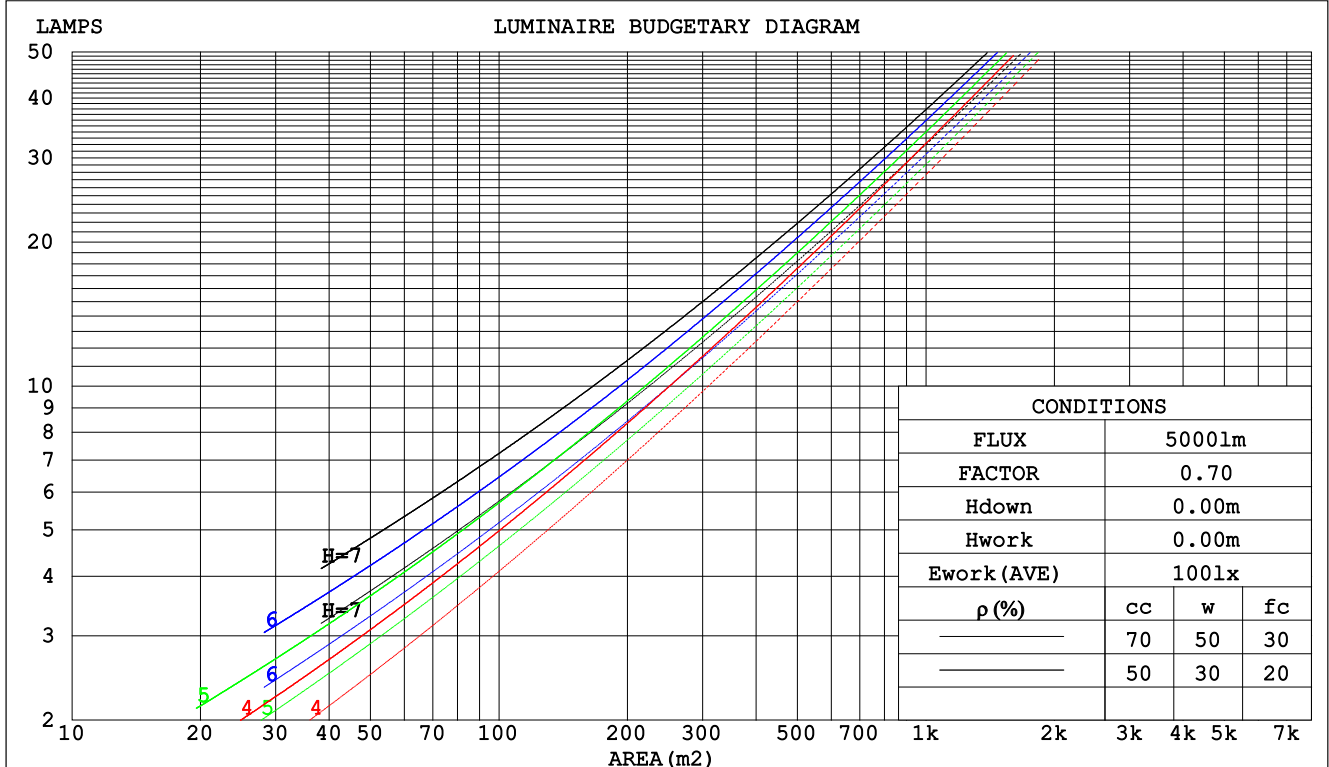
C Range: 0 - 360DEG
C Interval: 30.0DEG
Test Speed: HIGH
Temperature:25.3DEG
Operators:
Test Date:2023-09-19

γ Range: 0 - 180DEG
 γ Interval: 1.0DEG
Test System:EVERFINE GO-2000B_V1 SYSTEM V2.0.269
Humidity:65.0%
Test Distance:9.200m [K=1.0000]
Remarks:

CU AND LUMINAIRE BUDGETARY ESTIMATE DIAGRAM

Test:U:24.00V I:0.2430A P:5.832W PF:1.000 Lamp Flux:21.04x1 lm		
NAME: SF17-24V-5050-70-DMX3-RGB-B	TYPE:硅胶	WEIGHT:
DIM.: 16.5MM*16.5MM	SPEC.:	SERIAL No.:202309011
MFR.: OLYMPIA	SUR.:1.0*0.0165	PROTECTION ANGLE:

pcc	80%			70%			50%			30%			10%			0
pw	50%	30%	10%	50%	30%	10%	50%	30%	10%	50%	30%	10%	50%	30%	10%	0
pfc	20%			20%			20%			20%			20%			0
RCR	RCR:Room Cavity Ratio			Coefficients of Utilization(CU)												
0.0	1.19	1.19	1.19	1.16	1.16	1.16	1.11	1.11	1.11	1.06	1.06	1.06	1.01	1.01	1.01	.99
1.0	1.04	.00	.96	1.02	.98	.94	.97	.94	.91	.93	.91	.88	.89	.87	.85	.83
2.0	.91	.84	.78	.89	.82	.77	.85	.80	.75	.82	.77	.73	.78	.75	.72	.69
3.0	.80	.71	.65	.78	.70	.64	.75	.68	.63	.72	.66	.62	.69	.65	.61	.58
4.0	.70	.62	.55	.69	.61	.55	.66	.59	.54	.64	.58	.53	.62	.56	.52	.50
5.0	.63	.54	.47	.62	.53	.47	.60	.52	.46	.57	.51	.46	.56	.50	.45	.43
6.0	.57	.48	.41	.56	.47	.41	.54	.46	.41	.52	.45	.40	.50	.44	.40	.38
7.0	.51	.43	.36	.50	.42	.36	.49	.41	.36	.47	.41	.36	.46	.40	.35	.33
8.0	.47	.38	.32	.46	.38	.32	.45	.37	.32	.43	.37	.32	.42	.36	.32	.30
9.0	.43	.35	.29	.42	.34	.29	.41	.34	.29	.40	.33	.29	.39	.33	.28	.27
10.0	.40	.32	.26	.39	.31	.26	.38	.31	.26	.37	.31	.26	.36	.30	.26	.24



C Range: 0 - 360DEG
C Interval: 30.0DEG
Test Speed: HIGH
Temperature:25.3DEG
Operators:
Test Date:2023-09-19

γ Range: 0 - 180DEG
γ Interval: 1.0DEG
Test System:EVERFINE GO-2000B_V1 SYSTEM V2.0.269
Humidity:65.0%
Test Distance:9.200m [K=1.0000]
Remarks:

WEC AND CCEC

Test:U:24.00V I:0.2430A P:5.832W PF:1.000 Lamp Flux:21.04x1 lm					
NAME: SF17-24V-5050-70-DMX3-RGB-B			TYPE: 硅胶		WEIGHT:
DIM.: 16.5MM*16.5MM			SPEC.:		SERIAL No.:202309011
MFR.: OLYMPIA			SUR.:1.0*0.0165		PROTECTION ANGLE:

pcc	80%			70%			50%			30%			10%			0	
pw	50%	30%	10%	50%	30%	10%	50%	30%	10%	50%	30%	10%	50%	30%	10%	0	
pfc	20%			20%			20%			20%			20%			0	
RCR	RCR:Room Cavity Ratio						Wall Exitance Coefficients(WEC)										
0.0																	
1.0	.304	.173	.055	.297	.169	.054	.283	.162	.052	.271	.156	.050	.259	.150	.048		
2.0	.288	.158	.048	.282	.155	.048	.270	.150	.047	.259	.145	.045	.248	.140	.044		
3.0	.268	.142	.043	.262	.140	.042	.251	.136	.041	.241	.132	.041	.232	.129	.040		
4.0	.247	.129	.038	.242	.127	.037	.233	.124	.037	.224	.120	.036	.216	.117	.036		
5.0	.229	.117	.034	.225	.115	.034	.216	.113	.033	.208	.110	.033	.201	.107	.032		
6.0	.213	.107	.031	.209	.105	.030	.201	.103	.030	.194	.101	.030	.187	.099	.029		
7.0	.198	.098	.028	.194	.097	.028	.188	.095	.027	.181	.093	.027	.175	.091	.027		
8.0	.185	.090	.025	.182	.090	.025	.176	.088	.025	.170	.086	.025	.165	.085	.025		
9.0	.173	.084	.023	.171	.083	.023	.165	.082	.023	.160	.080	.023	.155	.079	.023		
10.0	.163	.078	.022	.161	.078	.022	.156	.076	.021	.151	.075	.021	.147	.074	.021		

pcc	80%			70%			50%			30%			10%			0
pw	50%	30%	10%	50%	30%	10%	50%	30%	10%	50%	30%	10%	50%	30%	10%	0
pfc	20%			20%			20%			20%			20%			0
RCR	RCR:Room Cavity Ratio						Ceiling Cavity Exitance Coefficients(CCEC)									
0.0	.196	.196	.196	.168	.168	.168	.115	.115	.115	.066	.066	.066	.021	.021	.021	
1.0	.186	.162	.141	.159	.139	.121	.109	.096	.084	.063	.055	.049	.020	.018	.016	
2.0	.178	.138	.104	.152	.119	.090	.104	.082	.063	.060	.048	.037	.019	.015	.012	
3.0	.170	.120	.081	.146	.104	.070	.100	.072	.049	.058	.042	.029	.019	.014	.009	
4.0	.162	.107	.065	.139	.092	.056	.096	.064	.040	.055	.038	.023	.018	.012	.008	
5.0	.155	.097	.053	.133	.084	.046	.092	.058	.033	.053	.034	.019	.017	.011	.006	
6.0	.148	.088	.045	.127	.076	.040	.088	.053	.028	.051	.031	.017	.016	.010	.005	
7.0	.141	.081	.039	.121	.071	.034	.084	.049	.024	.049	.029	.014	.016	.010	.005	
8.0	.135	.076	.035	.116	.066	.030	.080	.046	.022	.047	.027	.013	.015	.009	.004	
9.0	.129	.071	.031	.111	.061	.027	.077	.043	.019	.045	.025	.012	.014	.008	.004	
10.0	.123	.066	.029	.106	.058	.025	.074	.041	.018	.043	.024	.011	.014	.008	.004	

C Range: 0 - 360DEG
 C Interval: 30.0DEG
 Test Speed: HIGH
 Temperature:25.3DEG
 Operators:
 Test Date:2023-09-19

γ Range: 0 - 180DEG
 γ Interval: 1.0DEG
 Test System:EVERFINE GO-2000B_V1 SYSTEM V2.0.269
 Humidity:65.0%
 Test Distance:9.200m [K=1.0000]
 Remarks:

Uncorrected UGR Table

Test:U:24.00V I:0.2430A P:5.832W PF:1.000 Lamp Flux:21.04x1 lm										
NAME: SF17-24V-5050-70-DMX3-RGB-B					TYPE:硅胶			WEIGHT:		
DIM.: 16.5MM*16.5MM					SPEC.:			SERIAL No.:202309011		
MFR.: OLYMPIA					SUR.:1.0*0.0165			PROTECTION ANGLE:		
ceiling/cavity	0.7	0.7	0.5	0.5	0.3	0.7	0.7	0.5	0.5	0.3
walls	0.5	0.3	0.5	0.3	0.3	0.5	0.3	0.5	0.3	0.3
working plane	0.2	0.2	0.2	0.2	0.2	0.2	0.2	0.2	0.2	0.2
Room dimensions	Viewed crosswise					Viewed endwise				
x = 2H y = 2H	9.5	11.0	9.8	11.3	11.5	9.8	11.3	10.1	11.5	11.8
3H	11.0	12.4	11.3	12.6	12.9	11.3	12.7	11.6	13.0	13.2
4H	11.5	12.8	11.8	13.1	13.4	11.9	13.2	12.2	13.5	13.8
6H	11.8	13.1	12.2	13.3	13.6	12.3	13.5	12.6	13.8	14.1
8H	11.9	13.1	12.2	13.4	13.7	12.4	13.6	12.7	13.9	14.2
12H	11.9	13.0	12.3	13.4	13.7	12.4	13.6	12.8	13.9	14.2
4H 2H	10.2	11.5	10.5	11.8	12.0	10.4	11.7	10.7	12.0	12.2
3H	11.8	12.9	12.1	13.2	13.5	12.1	13.2	12.4	13.5	13.9
4H	12.4	13.4	12.8	13.8	14.1	12.8	13.8	13.2	14.2	14.5
6H	12.8	13.7	13.2	14.1	14.5	13.3	14.2	13.7	14.6	14.9
8H	12.9	13.8	13.3	14.2	14.6	13.4	14.3	13.8	14.6	15.1
12H	13.0	13.8	13.4	14.2	14.6	13.5	14.3	13.9	14.7	15.1
8H 4H	12.6	13.5	13.1	13.9	14.3	13.0	13.9	13.4	14.2	14.6
6H	13.2	13.9	13.6	14.3	14.8	13.6	14.3	14.1	14.7	15.2
8H	13.3	14.0	13.8	14.4	14.9	13.8	14.4	14.3	14.9	15.3
12H	13.4	14.0	13.9	14.4	14.9	13.9	14.5	14.4	14.9	15.4
12H 4H	12.6	13.4	13.1	13.8	14.3	13.0	13.8	13.4	14.2	14.6
6H	13.2	13.9	13.7	14.3	14.8	13.6	14.3	14.1	14.7	15.2
8H	13.4	13.9	13.9	14.4	14.9	13.9	14.4	14.3	14.9	15.4
Variations with the observer position at spacings:										
S = 1.0H	+ 0.2 / - 0.2					+ 0.1 / - 0.2				
1.5H	+ 0.2 / - 0.3					+ 0.2 / - 0.3				
2.0H	+ 0.2 / - 0.3					+ 0.2 / - 0.3				

CIE Pub.117 Corrected 21.04 lm Total Lamp Luminous Flux.(8log(F/F0) = -13.4)

C Range: 0 - 360DEG
C Interval: 30.0DEG
Test Speed: HIGH
Temperature:25.3DEG
Operators:
Test Date:2023-09-19

γ Range: 0 - 180DEG
γ Interval: 1.0DEG
Test System:EVERFINE GO-2000B_V1 SYSTEM V2.0.269
Humidity:65.0%
Test Distance:9.200m [K=1.0000]
Remarks:

UTILIZATION FACTORS TABLE

Test:U:24.00V I:0.2430A P:5.832W PF:1.000 Lamp Flux:21.04x1 lm		
NAME: SF17-24V-5050-70-DMX3-RGB-B	TYPE: 硅胶	WEIGHT:
DIM.: 16.5MM*16.5MM	SPEC.:	SERIAL No.:202309011
MFR.: OLYMPIA	SUR.:1.0*0.0165	PROTECTION ANGLE:

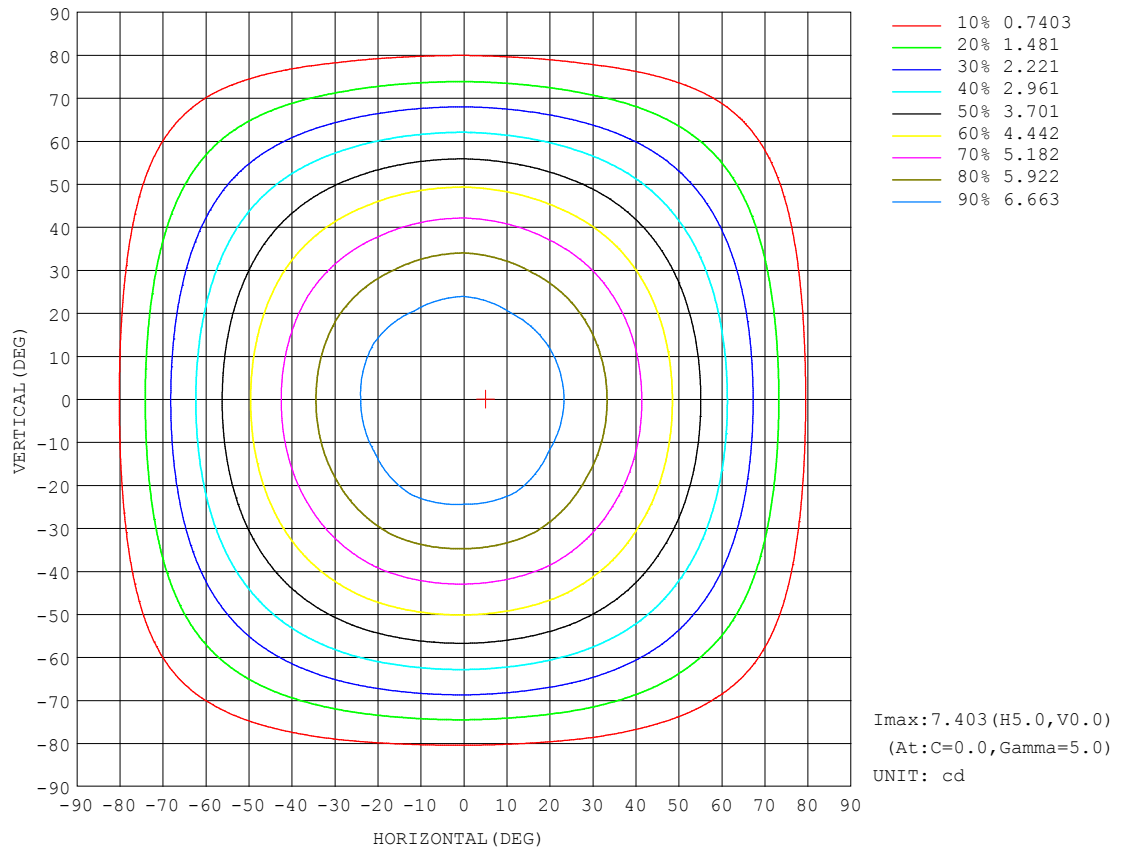
REFLECTANCE										
Ceiling	0.8	0.8	0.8	0.7	0.7	0.7	0.5	0.5	0.5	0
Walls	0.7	0.5	0.3	0.7	0.5	0.3	0.7	0.5	0.3	0
Working plane	0.2	0.2	0.2	0.2	0.2	0.2	0.2	0.2	0.2	0
ROOM INDEX	UTILIZATION FACTORS (PERCENT) $k(RI) \times RCR = 5$									
$k = 0.60$	57	46	39	57	46	39	56	45	39	32
0.80	68	56	49	67	56	48	65	55	48	41
1.00	76	65	58	75	64	57	72	66	57	50
1.25	83	73	66	82	72	65	79	70	64	57
1.50	88	78	71	86	77	71	83	76	70	62
2.00	95	87	80	93	85	79	90	83	78	70
2.50	99	91	85	97	90	84	93	87	82	74
3.00	102	95	90	100	94	89	96	91	87	78
4.00	106	101	96	104	99	95	99	95	92	83
5.00	109	104	100	106	102	98	102	98	95	86
ROOM INDEX	UF (total)									Direct
According to DIN EN 13032-2 2004			Suspended					SHRNM = 1.25		

C Range: 0 - 360DEG
 C Interval: 30.0DEG
 Test Speed: HIGH
 Temperature: 25.3DEG
 Operators:
 Test Date: 2023-09-19

γ Range: 0 - 180DEG
 γ Interval: 1.0DEG
 Test System: EVERFINE GO-2000B_V1 SYSTEM V2.0.269
 Humidity: 65.0%
 Test Distance: 9.200m [K=1.0000]
 Remarks:

ISOCANDELA DIAGRAM

Test:U:24.00V I:0.2430A P:5.832W PF:1.000 Lamp Flux:21.04x1 lm		
NAME: SF17-24V-5050-70-DMX3-RGB-B	TYPE: 硅胶	WEIGHT:
DIM.: 16.5MM*16.5MM	SPEC.:	SERIAL No.:202309011
MFR.: OLYMPIA	SUR.:1.0*0.0165	PROTECTION ANGLE:

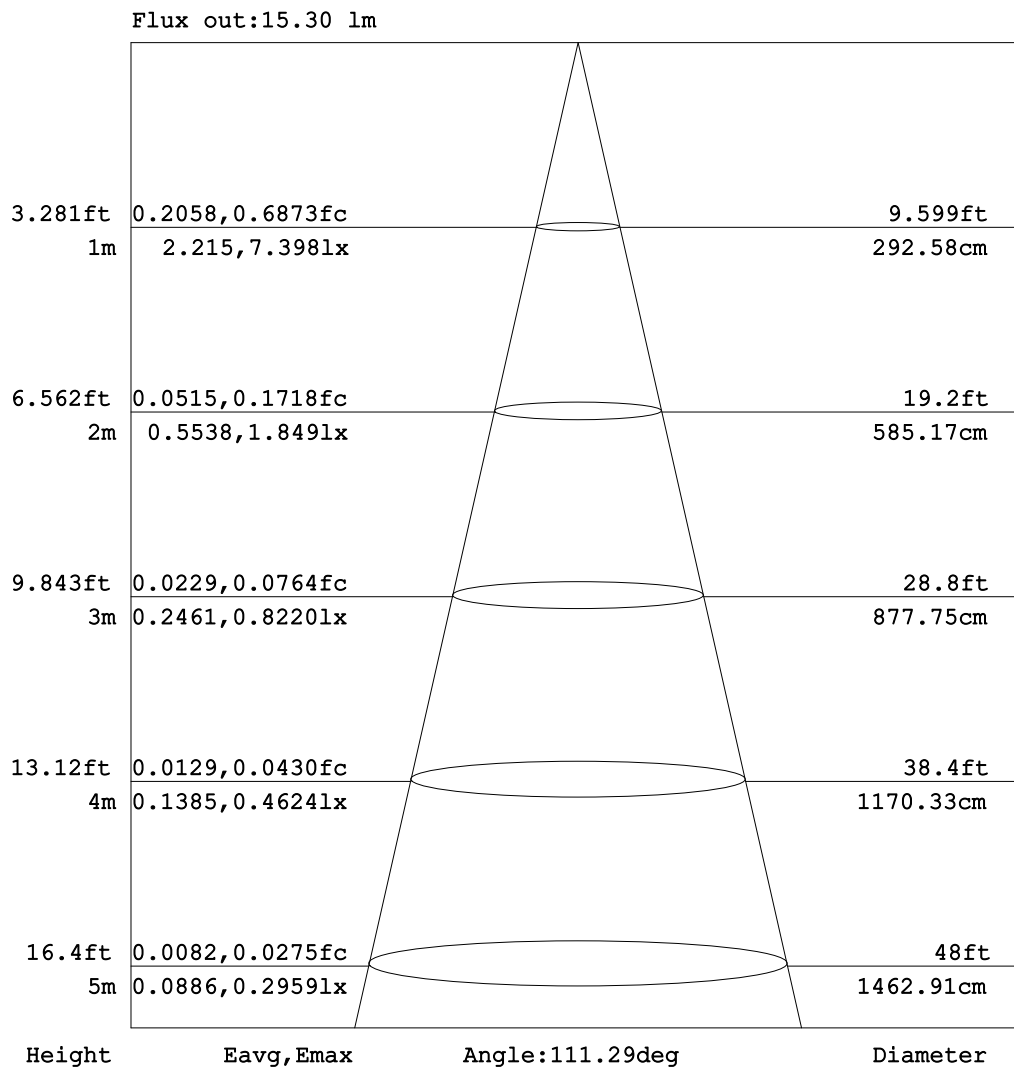


C Range: 0 - 360DEG
C Interval: 30.0DEG
Test Speed: HIGH
Temperature:25.3DEG
Operators:
Test Date:2023-09-19

γ Range: 0 - 180DEG
 γ Interval: 1.0DEG
Test System:EVERFINE GO-2000B_V1 SYSTEM V2.0.269
Humidity:65.0%
Test Distance:9.200m [K=1.0000]
Remarks:

AAI Figure

Test:U:24.00V I:0.2430A P:5.832W PF:1.000 Lamp Flux:21.04x1 lm		
NAME: SF17-24V-5050-70-DMX3-RGB-B	TYPE: 硅胶	WEIGHT:
DIM.: 16.5MM*16.5MM	SPEC.:	SERIAL No.:202309011
MFR.: OLYMPIA	SUR.:1.0*0.0165	PROTECTION ANGLE:



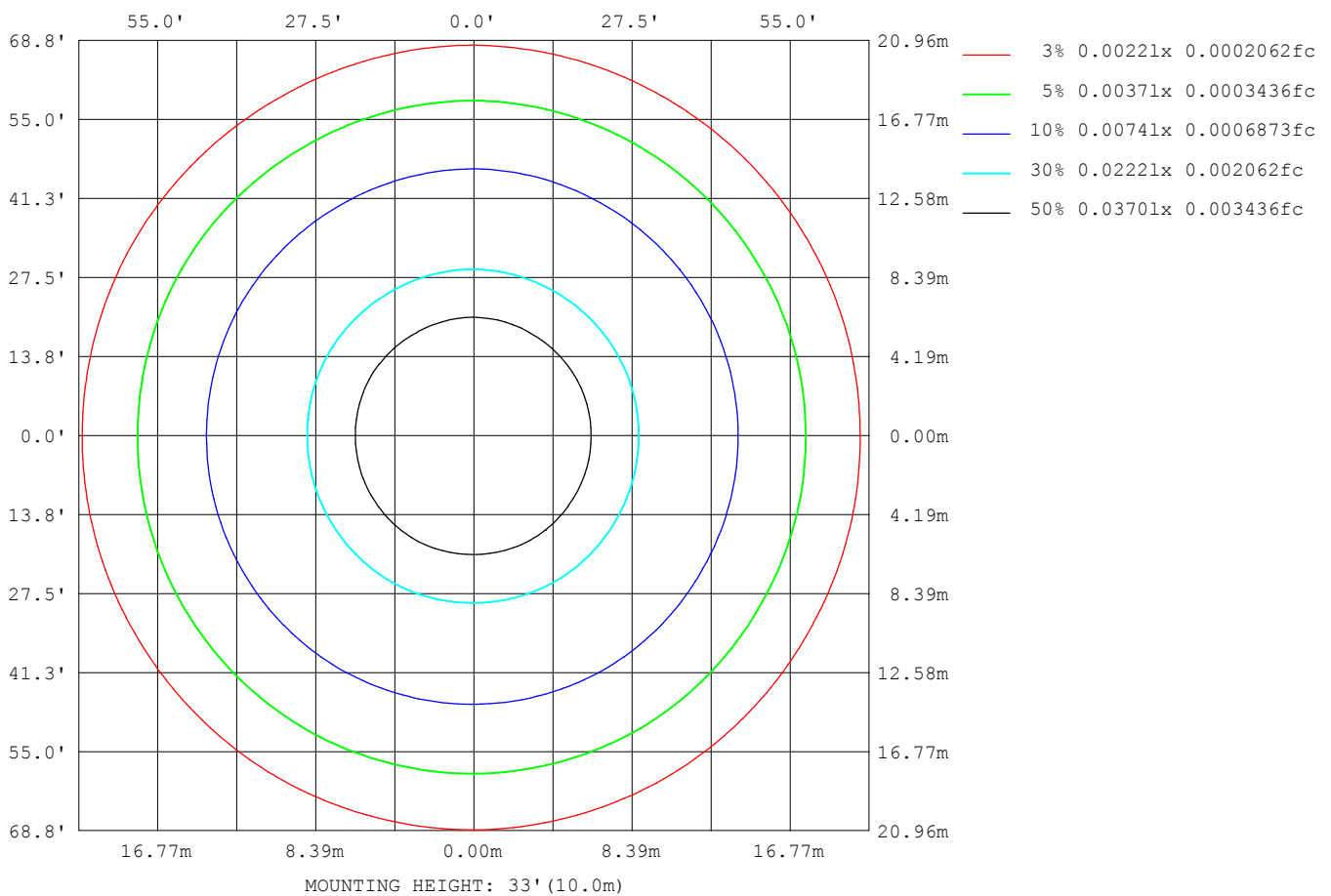
Note: The Curves indicate the illuminated area and the average illumination when the luminaire is at different distance.

C Range: 0 - 360DEG
C Interval: 30.0DEG
Test Speed: HIGH
Temperature: 25.3DEG
Operators:
Test Date: 2023-09-19

γ Range: 0 - 180DEG
γ Interval: 1.0DEG
Test System: EVERFINE GO-2000B_V1 SYSTEM V2.0.269
Humidity: 65.0%
Test Distance: 9.200m [K=1.0000]
Remarks:

ISOLUX DIAGRAM

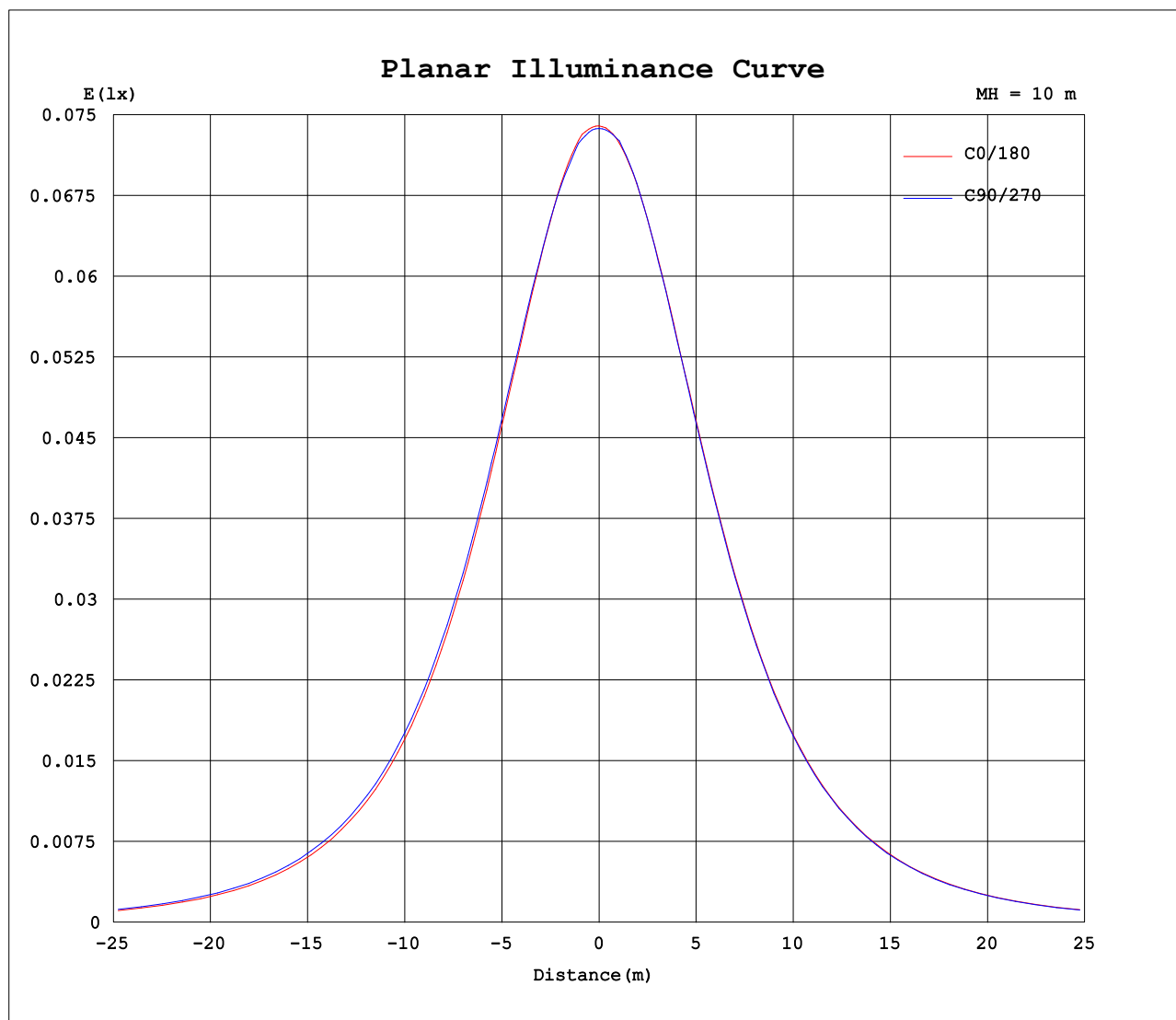
Test:U:24.00V I:0.2430A P:5.832W PF:1.000 Lamp Flux:21.04x1 lm		
NAME: SF17-24V-5050-70-DMX3-RGB-B	TYPE: 硅胶	WEIGHT:
DIM.: 16.5MM*16.5MM	SPEC.:	SERIAL No.:202309011
MFR.: OLYMPIA	SUR.:1.0*0.0165	PROTECTION ANGLE:



C Range: 0 - 360DEG
C Interval: 30.0DEG
Test Speed: HIGH
Temperature:25.3DEG
Operators:
Test Date:2023-09-19

γ Range: 0 - 180DEG
 γ Interval: 1.0DEG
Test System:EVERFINE GO-2000B_V1 SYSTEM V2.0.269
Humidity:65.0%
Test Distance:9.200m [K=1.0000]
Remarks:

Planar Illuminance Curve



C Range: 0 - 360DEG
C Interval: 30.0DEG
Test Speed: HIGH
Temperature: 25.3DEG
Operators:
Test Date: 2023-09-19

γ Range: 0 - 180DEG
 γ Interval: 1.0DEG
Test System: EVERFINE GO-2000B_V1 SYSTEM V2.0.269
Humidity: 65.0%
Test Distance: 9.200m [K=1.0000]
Remarks:

LUMINOUS DISTRIBUTION INTENSITY DATA

Test:U:24.00V I:0.2430A P:5.832W PF:1.000 Lamp Flux:21.04x1 lm		
NAME: SF17-24V-5050-70-DMX3-RGB-B	TYPE: 硅胶	WEIGHT:
DIM.: 16.5MM*16.5MM	SPEC.:	SERIAL No.:202309011
MFR.: OLYMPIA	SUR.:1.0*0.0165	PROTECTION ANGLE:

Table--1

UNIT: cd

C (DEG) γ (DEG)	0	30	60	90	120	150	180	210	240	270	300	330						
0	7.40	7.39	7.38	7.37	7.37	7.38	7.40	7.39	7.38	7.37	7.37	7.38						
5	7.40	7.35	7.38	7.36	7.37	7.36	7.37	7.38	7.35	7.37	7.34	7.38						
10	7.29	7.25	7.30	7.26	7.31	7.26	7.28	7.31	7.24	7.28	7.22	7.26						
15	7.10	7.07	7.14	7.11	7.16	7.10	7.11	7.14	7.07	7.11	7.04	7.08						
20	6.85	6.83	6.91	6.89	6.95	6.89	6.89	6.91	6.85	6.87	6.80	6.83						
25	6.55	6.54	6.64	6.63	6.67	6.62	6.62	6.63	6.57	6.59	6.53	6.53						
30	6.19	6.20	6.29	6.30	6.34	6.29	6.27	6.28	6.22	6.24	6.16	6.17						
35	5.78	5.78	5.90	5.90	5.95	5.89	5.87	5.88	5.82	5.84	5.76	5.76						
40	5.31	5.34	5.45	5.47	5.50	5.43	5.42	5.43	5.38	5.39	5.31	5.31						
45	4.82	4.84	4.96	4.98	5.02	4.95	4.93	4.94	4.88	4.90	4.81	4.81						
50	4.27	4.30	4.42	4.46	4.48	4.44	4.40	4.41	4.36	4.37	4.30	4.28						
55	3.71	3.74	3.87	3.90	3.92	3.87	3.84	3.85	3.80	3.81	3.73	3.71						
60	3.12	3.15	3.27	3.32	3.32	3.28	3.25	3.26	3.20	3.21	3.15	3.12						
65	2.50	2.53	2.65	2.69	2.70	2.66	2.63	2.64	2.60	2.59	2.54	2.51						
70	1.87	1.90	2.00	2.04	2.05	2.01	1.99	1.99	1.95	1.95	1.90	1.89						
75	1.26	1.27	1.37	1.43	1.41	1.39	1.37	1.36	1.32	1.32	1.28	1.28						
80	0.68	0.68	0.76	0.80	0.80	0.76	0.76	0.76	0.71	0.73	0.67	0.69						
85	0.22	0.20	0.27	0.29	0.30	0.26	0.25	0.26	0.21	0.24	0.19	0.23						
90	0.02	0.02	0.06	0.06	0.05	0.02	0.00	0.02	0.00	0.02	0.00	0.00						
95	0.00	0.02	0.05	0.06	0.04	0.01	0.00	0.00	0.00	0.02	0.00	0.00						
100	0.00	0.02	0.05	0.06	0.04	0.02	0.00	0.00	0.01	0.02	0.01	0.00						
105	0.00	0.03	0.05	0.06	0.04	0.03	0.00	0.00	0.01	0.02	0.01	0.00						
110	0.00	0.03	0.05	0.06	0.04	0.02	0.00	0.00	0.02	0.02	0.02	0.00						
115	0.00	0.04	0.05	0.06	0.04	0.03	0.00	0.00	0.02	0.02	0.02	0.00						
120	0.00	0.04	0.06	0.06	0.04	0.03	0.00	0.00	0.02	0.02	0.02	0.00						
125	0.00	0.05	0.06	0.06	0.04	0.04	0.01	0.00	0.03	0.02	0.03	0.00						
130	0.00	0.05	0.06	0.06	0.04	0.04	0.02	0.00	0.03	0.02	0.03	0.00						
135	0.00	0.05	0.06	0.06	0.04	0.04	0.02	0.00	0.04	0.02	0.04	0.00						
140	0.00	0.05	0.06	0.06	0.04	0.05	0.03	0.00	0.04	0.02	0.04	0.00						
145	0.00	0.05	0.06	0.06	0.04	0.06	0.03	0.00	0.05	0.02	0.05	0.00						
150	0.02	0.05	0.06	0.06	0.04	0.06	0.04	0.00	0.06	0.02	0.05	0.00						
155	0.02	0.05	0.06	0.06	0.04	0.06	0.05	0.00	0.06	0.03	0.06	0.00						
160	0.04	0.05	0.06	0.06	0.05	0.06	0.05	0.01	0.06	0.03	0.06	0.00						
165	0.04	0.05	0.06	0.06	0.05	0.06	0.05	0.03	0.06	0.04	0.06	0.03						
170	0.05	0.05	0.06	0.06	0.05	0.06	0.05	0.04	0.06	0.04	0.06	0.03						
175	0.05	0.05	0.06	0.06	0.05	0.06	0.05	0.05	0.05	0.04	0.06	0.05						
180	0.05	0.05	0.06	0.06	0.05	0.06	0.05	0.05	0.05	0.05	0.05	0.05						

C Range: 0 - 360DEG
C Interval: 30.0DEG
Test Speed: HIGH
Temperature:25.3DEG
Operators:
Test Date:2023-09-19

γ Range: 0 - 180DEG
γ Interval: 1.0DEG
Test System:EVERFINE GO-2000B_V1 SYSTEM V2.0.269
Humidity:65.0%
Test Distance:9.200m [K=1.0000]
Remarks:

Photometric Data Table [cd]

G/C	0.0	30.0	60.0	90.0	120.0	150.0	180.0	210.0	240.0	270.0
0.0	7.398	7.388	7.378	7.373	7.368	7.378	7.398	7.388	7.378	7.373
3.0	7.398	7.363	7.378	7.368	7.368	7.378	7.383	7.383	7.372	7.373
6.0	7.383	7.347	7.378	7.357	7.368	7.357	7.353	7.383	7.337	7.378
9.0	7.318	7.267	7.333	7.277	7.338	7.287	7.297	7.338	7.267	7.308
12.0	7.222	7.187	7.242	7.212	7.257	7.207	7.217	7.252	7.186	7.217
15.0	7.102	7.071	7.142	7.111	7.162	7.101	7.111	7.142	7.071	7.112
18.0	6.956	6.940	7.006	6.985	7.037	6.975	6.985	7.011	6.940	6.976
21.0	6.790	6.779	6.861	6.850	6.891	6.835	6.839	6.856	6.794	6.815
24.0	6.620	6.608	6.700	6.689	6.735	6.664	6.664	6.695	6.633	6.655
27.0	6.414	6.412	6.509	6.503	6.554	6.488	6.477	6.499	6.437	6.449
30.0	6.188	6.196	6.293	6.297	6.343	6.292	6.271	6.283	6.221	6.243
33.0	5.946	5.960	6.057	6.070	6.107	6.050	6.040	6.052	5.985	6.006
36.0	5.690	5.703	5.811	5.819	5.861	5.799	5.784	5.795	5.733	5.750
39.0	5.409	5.422	5.539	5.568	5.595	5.532	5.512	5.519	5.467	5.479
42.0	5.117	5.141	5.258	5.276	5.313	5.256	5.231	5.238	5.181	5.193
45.0	4.816	4.839	4.956	4.985	5.017	4.954	4.929	4.941	4.879	4.901
48.0	4.494	4.527	4.640	4.668	4.705	4.638	4.617	4.619	4.567	4.584
51.0	4.163	4.195	4.313	4.361	4.369	4.321	4.291	4.288	4.240	4.253
54.0	3.826	3.864	3.982	4.020	4.042	3.985	3.959	3.971	3.909	3.931
57.0	3.474	3.507	3.630	3.668	3.685	3.638	3.612	3.594	3.562	3.574
60.0	3.117	3.150	3.273	3.321	3.323	3.276	3.245	3.257	3.205	3.207
63.0	2.751	2.793	2.896	2.944	2.952	2.904	2.878	2.871	2.838	2.846
66.0	2.374	2.406	2.519	2.567	2.570	2.522	2.507	2.509	2.461	2.459
69.0	1.997	2.029	2.132	2.190	2.183	2.145	2.119	2.132	2.079	2.092
72.0	1.620	1.642	1.746	1.798	1.791	1.748	1.737	1.740	1.692	1.700
75.0	1.263	1.271	1.374	1.426	1.414	1.386	1.371	1.358	1.321	1.323
78.0	0.9010	0.9137	0.9965	1.044	1.037	1.004	0.9989	1.001	0.9536	0.9709
81.0	0.5791	0.5870	0.6495	0.6725	0.6847	0.6524	0.6470	0.6542	0.5969	0.6190
84.0	0.3025	0.2857	0.3529	0.3661	0.3781	0.3409	0.3356	0.3478	0.2904	0.3176
87.0	0.1062	0.0751	0.1464	0.1405	0.1564	0.1102	0.1098	0.1312	0.0650	0.1111
90.0	0.0203	0.0151	0.0555	0.0603	0.0505	0.0150	0	0.0203	0	0.0202
93.0	0	0.0151	0.0503	0.0603	0.0402	0.0101	0	0	0	0.0151
96.0	0	0.0201	0.0503	0.0603	0.0402	0.0101	0	0	0	0.0151
99.0	0	0.0201	0.0503	0.0603	0.0402	0.0151	0	0	0.0050	0.0151
102.0	0	0.0251	0.0503	0.0603	0.0402	0.0151	0	0	0.0050	0.0151
105.0	0	0.0302	0.0503	0.0603	0.0402	0.0251	0	0	0.0101	0.0151
108.0	0	0.0302	0.0503	0.0603	0.0402	0.0201	0	0	0.0151	0.0151
111.0	0	0.0302	0.0503	0.0603	0.0402	0.0201	0	0	0.0151	0.0151
114.0	0	0.0352	0.0503	0.0603	0.0402	0.0251	0	0	0.0201	0.0151
117.0	0	0.0352	0.0553	0.0603	0.0402	0.0302	0	0	0.0201	0.0151
120.0	0	0.0402	0.0553	0.0603	0.0402	0.0302	0	0	0.0201	0.0151
123.0	0	0.0402	0.0553	0.0603	0.0402	0.0302	0	0	0.0251	0.0151
126.0	0	0.0452	0.0553	0.0603	0.0402	0.0352	0.0050	0	0.0351	0.0151
129.0	0	0.0503	0.0553	0.0603	0.0402	0.0352	0.0151	0	0.0302	0.0151
132.0	0	0.0503	0.0553	0.0603	0.0402	0.0402	0.0151	0	0.0352	0.0151
135.0	0	0.0503	0.0553	0.0603	0.0402	0.0402	0.0201	0	0.0352	0.0151
138.0	0	0.0503	0.0553	0.0603	0.0402	0.0452	0.0251	0	0.0402	0.0151
141.0	0	0.0503	0.0553	0.0603	0.0402	0.0453	0.0253	0	0.0403	0.0151
144.0	0	0.0503	0.0553	0.0603	0.0402	0.0503	0.0302	0	0.0503	0.0151
147.0	0.0050	0.0503	0.0553	0.0603	0.0402	0.0553	0.0352	0	0.0503	0.0151
150.0	0.0151	0.0503	0.0553	0.0603	0.0402	0.0553	0.0402	0	0.0602	0.0151
153.0	0.0151	0.0503	0.0553	0.0603	0.0402	0.0553	0.0502	0	0.0553	0.0350
156.0	0.0201	0.0503	0.0553	0.0603	0.0452	0.0553	0.0453	0	0.0553	0.0302
159.0	0.0351	0.0503	0.0553	0.0603	0.0452	0.0553	0.0503	0.0050	0.0553	0.0302
162.0	0.0352	0.0503	0.0553	0.0603	0.0452	0.0553	0.0503	0.0151	0.0553	0.0302
165.0	0.0402	0.0503	0.0553	0.0603	0.0452	0.0553	0.0503	0.0301	0.0553	0.0351
168.0	0.0402	0.0503	0.0553	0.0603	0.0452	0.0553	0.0503	0.0302	0.0553	0.0352
171.0	0.0503	0.0503	0.0553	0.0603	0.0452	0.0553	0.0503	0.0352	0.0553	0.0352
174.0	0.0503	0.0503	0.0553	0.0603	0.0503	0.0553	0.0503	0.0402	0.0503	0.0352
177.0	0.0503	0.0503	0.0553	0.0603	0.0503	0.0553	0.0503	0.0452	0.0503	0.0402
180.0	0.0503	0.0503	0.0553	0.0603	0.0503	0.0553	0.0503	0.0503	0.0503	0.0452
G/C	300.0	330.0								
0.0	7.368	7.378								
3.0	7.358	7.378								
6.0	7.312	7.348								
9.0	7.242	7.298								
12.0	7.151	7.197								
15.0	7.041	7.082								
18.0	6.910	6.941								
21.0	6.744	6.775								
24.0	6.583	6.604								
27.0	6.382	6.403								
30.0	6.161	6.172								

C Range: 0 - 360DEG
 C Interval: 30.0DEG
 Test Speed: HIGH
 Temperature: 25.3DEG
 Operators:
 Test Date: 2023-09-19

γ Range: 0 - 180DEG
 γ Interval: 1.0DEG
 Test System: EVERFINE GO-2000B_V1 SYSTEM V2.0.269
 Humidity: 65.0%
 Test Distance: 9.200m [K=1.0000]
 Remarks:

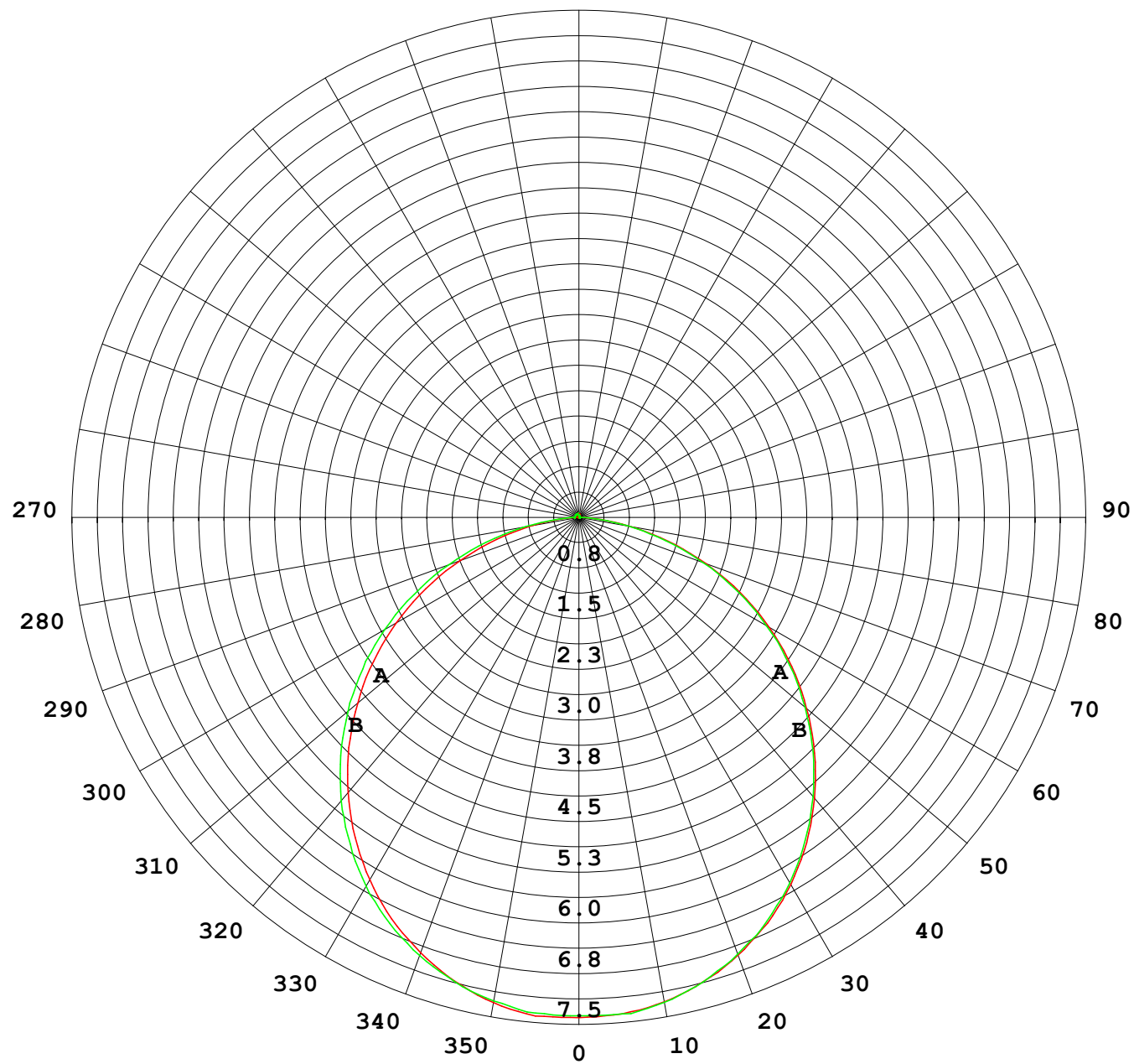
Photometric Data Table [cd]

33.0	5.929	5.936
36.0	5.673	5.680
39.0	5.411	5.399
42.0	5.120	5.112
45.0	4.814	4.810
48.0	4.497	4.489
51.0	4.180	4.167
54.0	3.849	3.836
57.0	3.502	3.479
60.0	3.150	3.117
63.0	2.778	2.750
66.0	2.401	2.373
69.0	2.034	2.006
72.0	1.637	1.625
75.0	1.275	1.278
78.0	0.9233	0.9157
81.0	0.5666	0.5938
84.0	0.2654	0.3023
87.0	0.0497	0.0960
90.0	0	0.0002
93.0	0	0
96.0	0	0
99.0	0.0050	0
102.0	0.0101	0
105.0	0.0101	0
108.0	0.0151	0
111.0	0.0151	0
114.0	0.0151	0
117.0	0.0201	0
120.0	0.0201	0
123.0	0.0251	0
126.0	0.0251	0
129.0	0.0302	0
132.0	0.0352	0
135.0	0.0352	0
138.0	0.0402	0
141.0	0.0402	0
144.0	0.0452	0
147.0	0.0453	0
150.0	0.0503	0
153.0	0.0553	0
156.0	0.0553	0
159.0	0.0553	0
162.0	0.0553	0.0101
165.0	0.0553	0.0250
168.0	0.0553	0.0302
171.0	0.0553	0.0302
174.0	0.0553	0.0453
177.0	0.0553	0.0452
180.0	0.0503	0.0503

C Range: 0 - 360DEG
C Interval: 30.0DEG
Test Speed: HIGH
Temperature:25.3DEG
Operators:
Test Date:2023-09-19

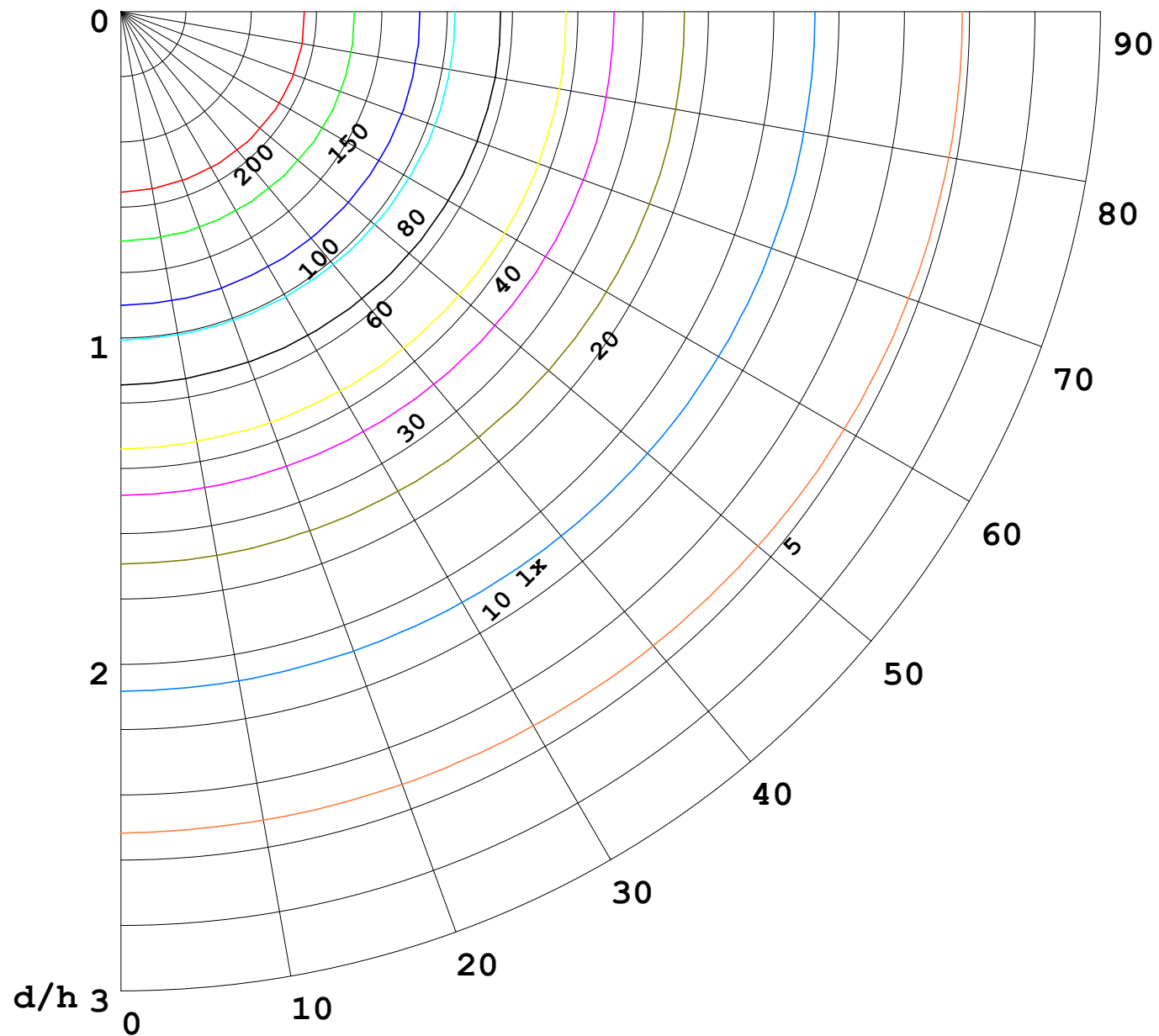
√ Range: 0 - 180DEG
√ Interval: 1.0DEG
Test System:EVERFINE GO-2000B_V1 SYSTEM V2.0.269
Humidity:65.0%
Test Distance:9.200m [K=1.0000]
Remarks:

I (cd)



1000 lm

$\kappa = 1$



F = 5000 lm
 K = 0.7
 Hcc = 0.0 m
 Hfc = 0.0 m
 Eave = 100 lx

	Pcc	Pw	Pfc
—	70	50	30
—	50	30	20

