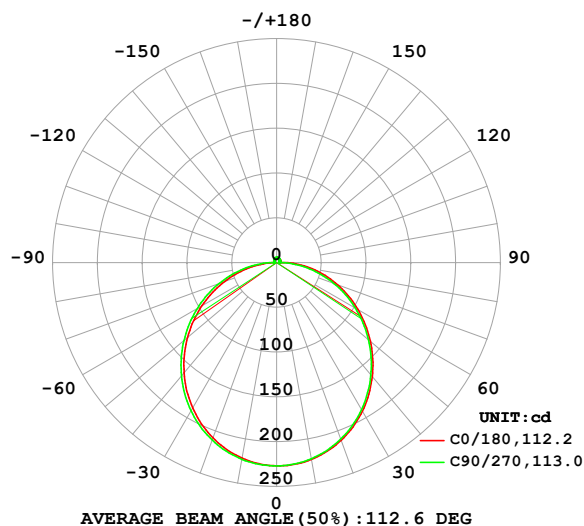


LUMINAIRE PHOTOMETRIC TEST REPORT

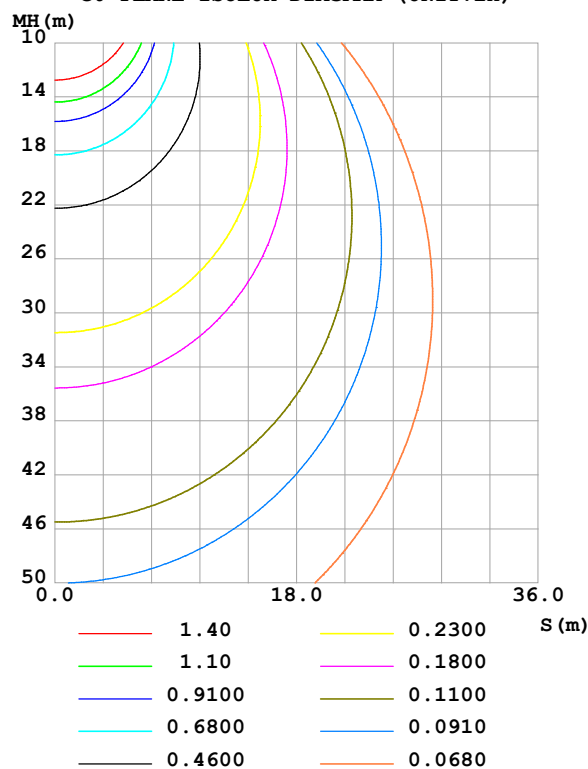
Test:U:24.00V I:0.4232A P:10.16W PF:1.000 Freq:0Hz Lamp Flux:692.508x1 lm		
NAME: SF17-24V-2835-120-2700-80	TYPE:	WEIGHT:
SPEC.:	DIM.: Length=1m	SERIAL No.:
MFR.:	SUR.:	Shielding Angle:

DATA OF LAMP		PHOTOMETRIC DATA Eff: 68.18 lm/W			
MODEL		I _{max} (cd)	227.0	S/MH(C0/180)	1.23
NOMINAL POWER(W)		LOR(%)	100.0	S/MH(C90/270)	1.25
RATED VOLTAGE(V)		TOTAL FLUX(lm)	692.51	η UP,DN(C0-180)	1.9,48.2
NOMINAL FLUX(lm)	692.508	CIE CLASS	DIRECT	η UP,DN(C180-360)	1.9,47.9
LAMPS INSIDE	1	η up (%)	3.9	CIBSE SHR NOM	1.25
TEST VOLTAGE(V)		η down (%)	96.1	CIBSE SHR MAX	1.35

LUMINOUS INTENSITY DISTRIBUTION DIAGRAM



C0 PLANE ISOLUX DIAGRAM (UNIT:lx)



C Range: 0 - 360DEG
C Interval: 22.5DEG
Test Speed: HIGH
Temperature:25.3℃
Operators:Cloud
Test Date:2024-10-24

γ Range: 0 - 180DEG
γ Interval: 1.0DEG
Test System:EVERFINE GO-2000B_V1 SYSTEM V2.00.488
Humidity:65.0%
Test Distance:6.360m [K=1.0000]
Remarks:

ZONAL FLUX DIAGRAM

ZONAL FLUX DIAGRAM:

γ	C0	C45	C90	C135	C180	C225	C270	C315	γ	Φ zone	Φ total	%lum, lamp
10	223.3	223.1	222.4	221.8	221.8	222.3	223.1	223.6	0- 10	21.46	21.46	3.1,3.1
20	211.1	210.9	209.7	208.6	208.2	209.3	210.8	211.8	10- 20	61.32	82.78	12,12
30	191.6	191.3	189.8	188.1	187.5	189.0	191.1	192.5	20- 30	92.58	175.4	25.3,25.3
40	166.2	165.7	163.9	161.6	160.8	162.5	165.3	167.4	30- 40	111.2	286.6	41.4,41.4
50	136.6	136.1	133.9	130.9	129.8	131.7	135.0	137.9	40- 50	115.3	401.9	58,58
60	104.9	104.2	101.6	97.67	96.27	98.25	102.2	106.0	50- 60	105.4	507.3	73.3,73.3
70	72.48	71.37	67.98	63.56	61.91	63.87	68.36	73.00	60- 70	83.79	591.1	85.4,85.4
80	40.59	39.19	34.51	29.77	27.99	29.81	34.62	40.31	70- 80	54.01	645.1	93.2,93.2
90	10.37	8.377	3.145	3.288	3.186	3.453	3.481	9.062	80- 90	20.60	665.7	96.1,96.1
100	3.442	3.376	3.336	3.280	2.881	3.396	3.469	4.232	90-100	4.132	669.9	96.7,96.7
110	3.582	3.693	3.712	3.748	3.307	3.789	3.149	4.371	100-110	3.800	673.7	97.3,97.3
120	4.022	3.886	4.030	4.162	3.741	4.167	3.438	4.582	110-120	3.867	677.5	97.8,97.8
130	4.423	4.120	4.330	4.561	4.159	4.519	4.259	4.370	120-130	3.765	681.3	98.4,98.4
140	4.768	4.454	4.628	4.925	4.570	4.885	5.027	4.418	130-140	3.535	684.8	98.9,98.9
150	5.130	4.781	5.224	5.286	4.973	5.231	5.374	5.215	140-150	3.087	687.9	99.3,99.3
160	5.499	5.479	5.569	5.598	5.367	5.537	5.648	5.536	150-160	2.455	690.4	99.7,99.7
170	5.416	5.750	5.827	5.833	5.402	5.777	5.841	5.804	160-170	1.594	692.0	99.9,99.9
180	5.537	5.897	5.948	5.928	5.540	5.900	5.951	5.943	170-180	0.5537	692.5	100,100
DEG	LUMINOUS INTENSITY:cd									UNIT:lm		

Conical surface Flux(90deg): 344.66 lm

%lum = 49.8%

%lamp = 49.8%

Conical surface Flux(130deg): 552.53 lm

%lum = 79.8%

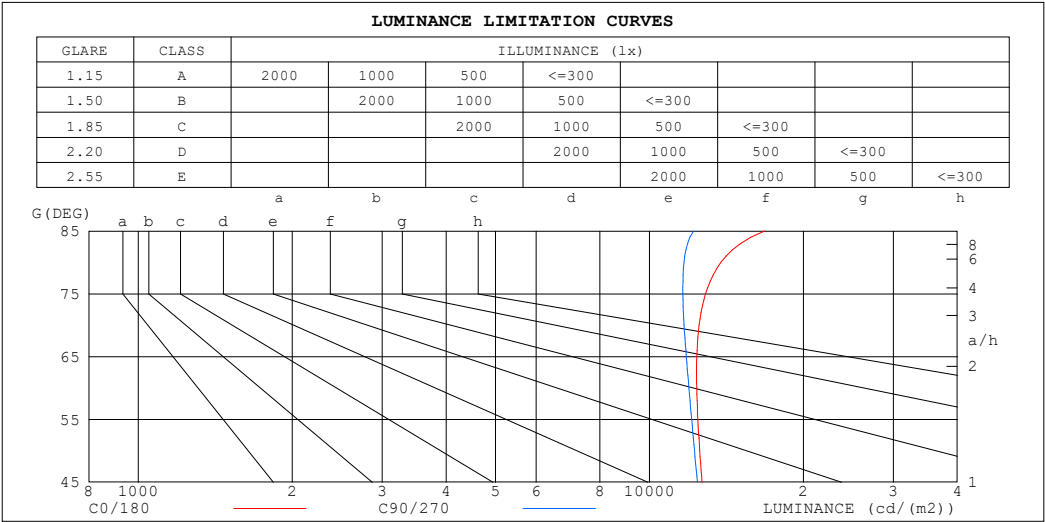
%lamp = 79.8%

C Range: 0 - 360DEG
 C Interval: 22.5DEG
 Test Speed: HIGH
 Temperature:25.3℃
 Operators:Cloud
 Test Date:2024-10-24

γ Range: 0 - 180DEG
 γ Interval: 1.0DEG
 Test System:EVERFINE GO-2000B_V1 SYSTEM V2.00.488
 Humidity:65.0%
 Test Distance:6.360m [K=1.0000]
 Remarks:

LUMINANCE LIMITATION CURVES

Test:U:24.00V I:0.4232A P:10.16W PF:1.000 Freq:0Hz Lamp Flux:692.508x1 lm		
NAME: SF17-24V-2835-120-2700-80	TYPE:	WEIGHT:
SPEC.:	DIM.: Length=1m	SERIAL No.:
MFR.:	SUR.:	Shielding Angle:



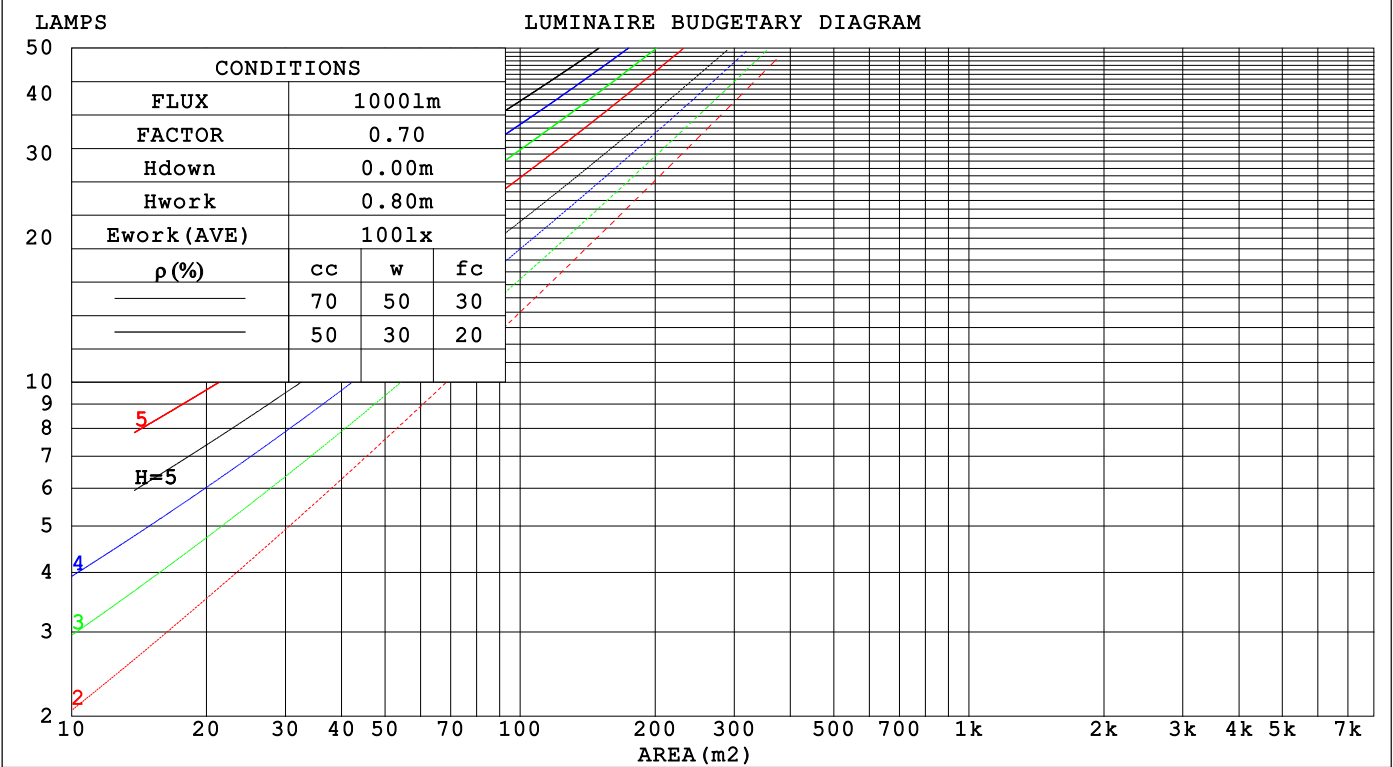
LUMINANCE cd/(m2)		
G (DEG)	C0/180	C90/270
85	16805	12192
80	13791	11681
75	12874	11621
70	12502	11682
65	12372	11803
60	12373	11940
55	12435	12090
50	12539	12245
45	12664	12405

C Range: 0 - 360DEG	γ Range: 0 - 180DEG
C Interval: 22.5DEG	γ Interval: 1.0DEG
Test Speed: HIGH	Test System:EVERFINE GO-2000B_V1 SYSTEM V2.00.488
Temperature:25.3℃	Humidity:65.0%
Operators:Cloud	Test Distance:6.360m [K=1.0000]
Test Date:2024-10-24	Remarks:

CU AND LUMINAIRE BUDGETARY ESTIMATE DIAGRAM

Test:U:24.00V I:0.4232A P:10.16W PF:1.000 Freq:0Hz		
Lamp Flux:692.508x1 lm		
NAME: SF17-24V-2835-120-2700-80	TYPE:	WEIGHT:
SPEC.:	DIM.: Length=1m	SERIAL No.:
MFR.:	SUR.:	Shielding Angle:

pcc	80%			70%			50%			30%			10%			0
pw	50%	30%	10%	50%	30%	10%	50%	30%	10%	50%	30%	10%	50%	30%	10%	0
pfc	20%			20%			20%			20%			20%			0
RCR	RCR:Room Cavity Ratio			Coefficients of Utilization(CU)												
0.0	1.18	1.18	1.18	1.15	1.15	1.15	1.09	1.09	1.09	1.04	1.04	1.04	.98	.98	.98	.96
1.0	1.02	.98	.94	.99	.95	.92	.94	.91	.88	.90	.87	.85	.86	.83	.81	.79
2.0	.89	.82	.76	.86	.80	.74	.82	.77	.72	.78	.74	.70	.75	.71	.68	.65
3.0	.78	.69	.62	.76	.68	.62	.72	.65	.60	.69	.63	.59	.66	.61	.57	.55
4.0	.69	.60	.53	.67	.59	.52	.64	.57	.51	.61	.55	.50	.59	.53	.49	.46
5.0	.61	.52	.45	.60	.51	.45	.57	.50	.44	.55	.48	.43	.53	.47	.42	.40
6.0	.55	.46	.39	.54	.45	.39	.52	.44	.38	.50	.43	.38	.48	.42	.37	.35
7.0	.50	.41	.35	.49	.40	.34	.47	.39	.34	.45	.38	.33	.43	.37	.33	.31
8.0	.45	.37	.31	.45	.36	.31	.43	.36	.30	.41	.35	.30	.40	.34	.29	.28
9.0	.42	.33	.28	.41	.33	.28	.39	.32	.27	.38	.32	.27	.37	.31	.27	.25
10.0	.38	.30	.25	.38	.30	.25	.37	.30	.25	.35	.29	.24	.34	.28	.24	.22

C Range: 0 - 360DEG
C Interval: 22.5DEG
Test Speed: HIGH
Temperature:25.3℃
Operators:Cloud
Test Date:2024-10-24γ Range: 0 - 180DEG
γ Interval: 1.0DEG
Test System:EVERFINE GO-2000B_V1 SYSTEM V2.00.488
Humidity:65.0%
Test Distance:6.360m [K=1.0000]
Remarks:

WEC AND CCEC

Test:U:24.00V I:0.4232A P:10.16W PF:1.000 Freq:0Hz Lamp Flux:692.508x1 lm					
NAME: SF17-24V-2835-120-2700-80			TYPE:		WEIGHT:
SPEC.:			DIM.: Length=1m		SERIAL No.:
MFR.:			SUR.:		Shielding Angle:

pcc	80%			70%			50%			30%			10%			0														
pw	50%	30%	10%	50%	30%	10%	50%	30%	10%	50%	30%	10%	50%	30%	10%	0														
pfc	20%			20%			20%			20%			20%			0														
RCR	RCR:Room Cavity Ratio															Wall Exitance Coefficients(WEC)														
0.0																														
1.0	.326	.185	.059	.317	.181	.058	.302	.173	.055	.288	.166	.053	.274	.159	.051															
2.0	.301	.165	.051	.293	.162	.050	.279	.155	.048	.267	.150	.047	.255	.144	.045															
3.0	.276	.147	.044	.269	.144	.043	.257	.139	.042	.245	.134	.041	.235	.130	.040															
4.0	.253	.131	.039	.247	.129	.038	.236	.125	.037	.226	.121	.037	.216	.118	.036															
5.0	.233	.119	.034	.228	.117	.034	.218	.113	.033	.209	.110	.033	.200	.107	.032															
6.0	.215	.108	.031	.211	.106	.031	.202	.103	.030	.194	.101	.030	.186	.098	.029															
7.0	.200	.099	.028	.196	.098	.028	.188	.095	.027	.180	.092	.027	.173	.090	.026															
8.0	.186	.091	.026	.183	.090	.025	.175	.088	.025	.169	.085	.025	.162	.083	.024															
9.0	.174	.084	.024	.171	.083	.023	.165	.081	.023	.158	.079	.023	.153	.078	.022															
10.0	.164	.079	.022	.161	.078	.022	.155	.076	.021	.149	.074	.021	.144	.072	.021															

pcc	80%			70%			50%			30%			10%			0
pw	50%	30%	10%	50%	30%	10%	50%	30%	10%	50%	30%	10%	50%	30%	10%	0
pfc	20%			20%			20%			20%			20%			0
RCR	RCR:Room Cavity Ratio						Ceiling Cavity Exitance Coefficients (CCEC)									
0.0	.220	.220	.220	.188	.188	.188	.128	.128	.128	.074	.074	.074	.024	.024	.024	
1.0	.211	.186	.163	.181	.159	.140	.124	.110	.097	.071	.063	.056	.023	.020	.018	
2.0	.203	.162	.127	.174	.139	.110	.119	.096	.076	.069	.056	.045	.022	.018	.015	
3.0	.196	.144	.104	.168	.125	.090	.115	.087	.063	.067	.051	.037	.021	.016	.012	
4.0	.188	.131	.088	.161	.113	.076	.111	.079	.054	.064	.046	.032	.021	.015	.010	
5.0	.180	.121	.077	.155	.105	.067	.107	.073	.047	.062	.043	.028	.020	.014	.009	
6.0	.173	.113	.069	.149	.098	.060	.103	.068	.043	.060	.040	.025	.019	.013	.008	
7.0	.166	.106	.064	.143	.092	.055	.099	.064	.039	.057	.038	.023	.019	.012	.008	
8.0	.160	.100	.059	.138	.087	.052	.095	.061	.037	.055	.036	.022	.018	.012	.007	
9.0	.154	.095	.056	.132	.083	.049	.092	.058	.035	.053	.034	.021	.017	.011	.007	
10.0	.148	.091	.053	.128	.079	.046	.088	.056	.033	.052	.033	.020	.017	.011	.007	

C Range: 0 - 360DEG
C Interval: 22.5DEG
Test Speed: HIGH
Temperature:25.3℃
Operators:Cloud
Test Date:2024-10-24

γ Range: 0 - 180DEG
γ Interval: 1.0DEG
Test System:EVERFINE GO-2000B_V1 SYSTEM V2.00.488
Humidity:65.0%
Test Distance:6.360m [K=1.0000]
Remarks:

UGR(Unified Glare Rating) Table

Test:U:24.00V I:0.4232A P:10.16W PF:1.000 Freq:0Hz Lamp Flux:692.508x1 lm											
NAME: SF17-24V-2835-120-2700-80					TYPE:			WEIGHT:			
SPEC.:					DIM.: Length=1m			SERIAL No.:			
MFR.:					SUR.:			Shielding Angle:			
ceiling/cavity	0.7	0.7	0.5	0.5	0.3	0.7	0.7	0.5	0.5	0.3	
walls	0.5	0.3	0.5	0.3	0.3	0.5	0.3	0.5	0.3	0.3	
working plane	0.2	0.2	0.2	0.2	0.2	0.2	0.2	0.2	0.2	0.2	
Room dimensions		Viewed crosswise					Viewed endwise				
x = 2H y = 2H	2H	22.8	24.2	23.1	24.5	24.8	22.6	24.1	23.0	24.4	24.7
	3H	24.5	25.9	24.9	26.2	26.5	24.3	25.7	24.7	26.0	26.3
	4H	25.4	26.7	25.7	27.0	27.3	25.1	26.4	25.5	26.7	27.1
	6H	26.1	27.4	26.5	27.7	28.1	25.7	27.0	26.1	27.3	27.7
	8H	26.5	27.6	26.9	28.0	28.4	26.0	27.2	26.4	27.5	27.9
	12H	26.8	27.9	27.2	28.3	28.7	26.2	27.3	26.6	27.7	28.1
4H	2H	23.4	24.7	23.8	25.0	25.4	23.3	24.6	23.7	25.0	25.3
	3H	25.4	26.5	25.8	26.9	27.3	25.2	26.4	25.6	26.7	27.1
	4H	26.4	27.4	26.8	27.8	28.2	26.1	27.2	26.6	27.6	28.0
	6H	27.3	28.2	27.8	28.7	29.1	26.9	27.9	27.4	28.3	28.7
	8H	27.7	28.6	28.2	29.0	29.5	27.3	28.1	27.7	28.6	29.0
	12H	28.1	28.9	28.6	29.4	29.8	27.5	28.3	28.0	28.8	29.3
8H	4H	26.7	27.6	27.2	28.0	28.5	26.5	27.4	27.0	27.8	28.3
	6H	27.9	28.6	28.4	29.1	29.6	27.5	28.3	28.0	28.7	29.2
	8H	28.4	29.1	28.9	29.6	30.1	28.0	28.6	28.5	29.1	29.7
	12H	29.0	29.5	29.5	30.0	30.6	28.4	28.9	28.9	29.5	30.0
12H	4H	26.8	27.6	27.3	28.0	28.5	26.6	27.4	27.1	27.8	28.3
	6H	28.0	28.6	28.5	29.1	29.6	27.7	28.3	28.2	28.8	29.3
	8H	28.6	29.1	29.1	29.7	30.2	28.2	28.7	28.7	29.3	29.8
Variations with the observer position at spacings(CIE Pub.117):											
S = 1.0H		+ 0.1 / - 0.2					+ 0.1 / - 0.2				
1.5H		+ 0.2 / - 0.3					+ 0.2 / - 0.3				
2.0H		+ 0.1 / - 0.3					+ 0.1 / - 0.3				

CIE Pub.117, 692.5 lm Total Lamp Luminous Flux Correct (8log(F/F0) = -1.3)
Area: 0.017 m2

C Range: 0 - 360DEG
C Interval: 22.5DEG
Test Speed: HIGH
Temperature:25.3℃
Operators:Cloud
Test Date:2024-10-24

γ Range: 0 - 180DEG
γ Interval: 1.0DEG
Test System:EVERFINE GO-2000B_V1 SYSTEM V2.00.488
Humidity:65.0%
Test Distance:6.360m [K=1.0000]
Remarks:

UTILIZATION FACTORS TABLE

Test:U:24.00V I:0.4232A P:10.16W PF:1.000 Freq:0Hz Lamp Flux:692.508x1 lm		
NAME: SF17-24V-2835-120-2700-80	TYPE:	WEIGHT:
SPEC.:	DIM.: Length=1m	SERIAL No.:
MFR.:	SUR.:	Shielding Angle:

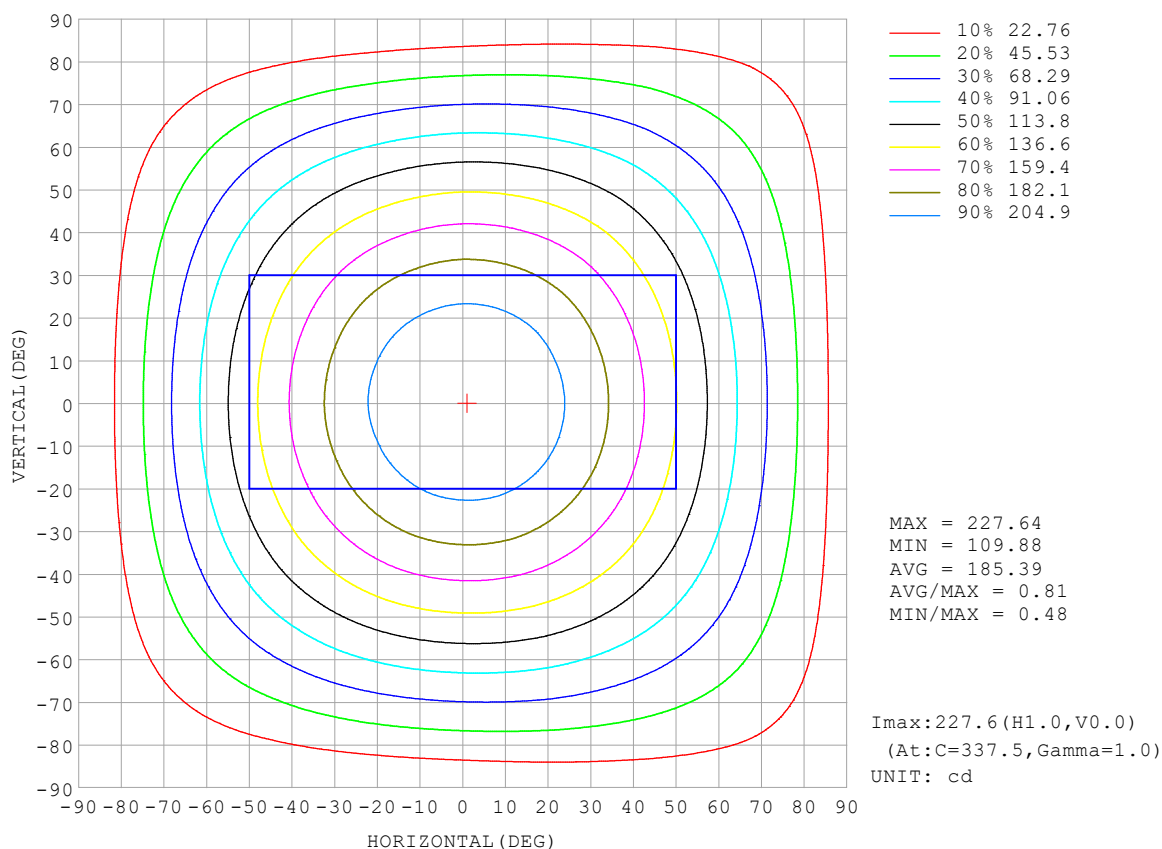
REFLECTANCE										
Ceiling	0.8	0.8	0.8	0.7	0.7	0.7	0.5	0.5	0.5	0
Walls	0.7	0.5	0.3	0.7	0.5	0.3	0.7	0.5	0.3	0
Working plane	0.2	0.2	0.2	0.2	0.2	0.2	0.2	0.2	0.2	0
ROOM INDEX	UTILIZATION FACTORS (PERCENT) $k(RI) \times RCR = 5$									
$k = 0.60$	56	44	37	55	44	37	53	43	36	30
0.80	65	54	46	64	53	46	62	52	45	38
1.00	74	62	55	72	62	54	70	63	54	46
1.25	81	70	62	79	69	62	76	67	61	53
1.50	86	75	68	84	74	67	80	72	66	58
2.00	93	84	77	91	82	76	87	80	74	65
2.50	97	89	82	94	87	81	90	84	79	69
3.00	100	93	87	98	91	86	93	88	83	73
4.00	104	98	93	102	96	92	97	92	88	78
5.00	107	102	97	104	99	95	99	95	92	81
ROOM INDEX	UF (total)									Direct
According to DIN EN 13032-2 2004			Suspended					SHRNOM = 1.25		

C Range: 0 - 360DEG
 C Interval: 22.5DEG
 Test Speed: HIGH
 Temperature: 25.3°C
 Operators: Cloud
 Test Date: 2024-10-24

γ Range: 0 - 180DEG
 γ Interval: 1.0DEG
 Test System: EVERFINE GO-2000B_V1 SYSTEM V2.00.488
 Humidity: 65.0%
 Test Distance: 6.360m [K=1.0000]
 Remarks:

ISOCANDELA DIAGRAM

Test:U:24.00V I:0.4232A P:10.16W PF:1.000 Freq:0Hz Lamp Flux:692.508x1 lm		
NAME: SF17-24V-2835-120-2700-80	TYPE:	WEIGHT:
SPEC.:	DIM.: Length=1m	SERIAL No.:
MFR.:	SUR.:	Shielding Angle:

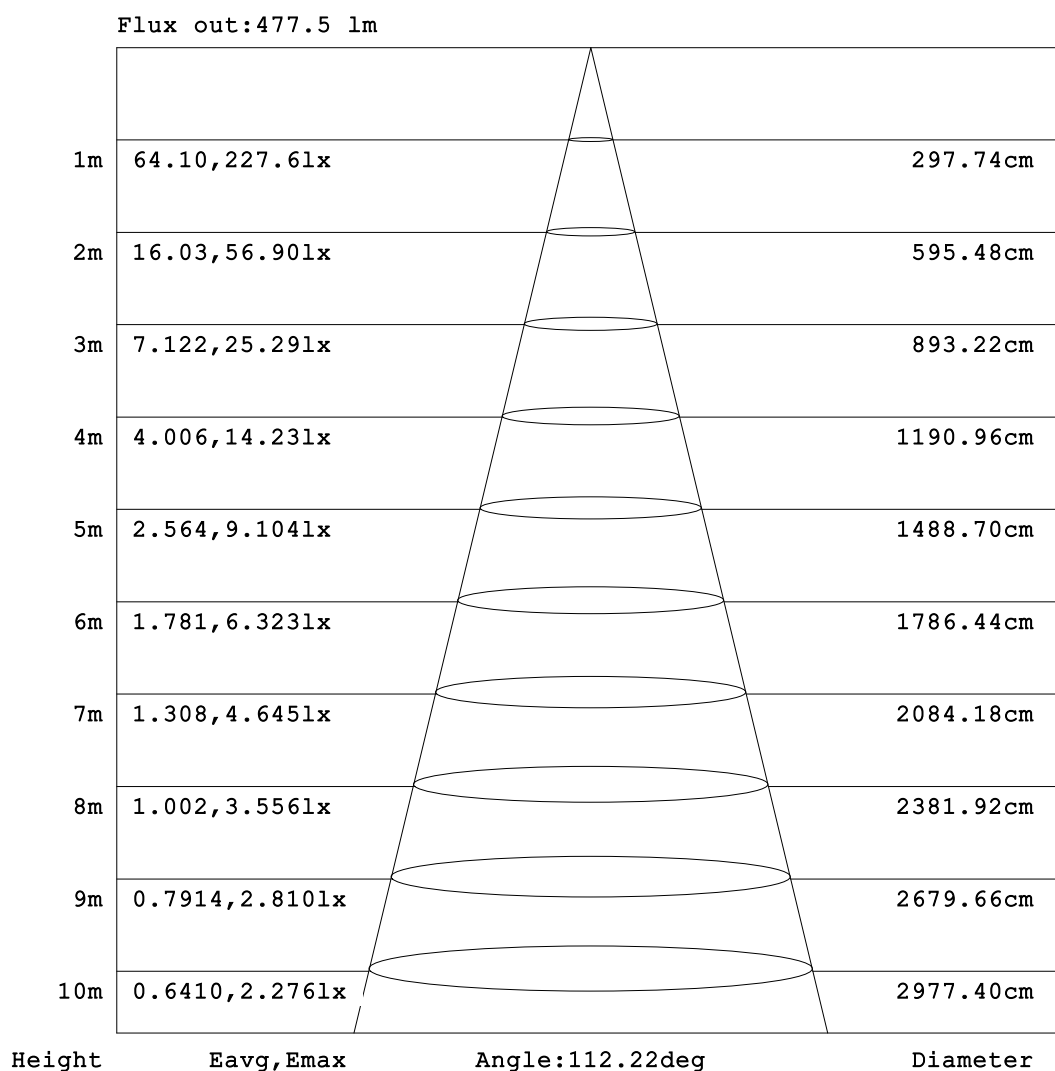


C Range: 0 - 360DEG
C Interval: 22.5DEG
Test Speed: HIGH
Temperature: 25.3°C
Operators: Cloud
Test Date: 2024-10-24

γ Range: 0 - 180DEG
γ Interval: 1.0DEG
Test System: EVERFINE GO-2000B_V1 SYSTEM V2.00.488
Humidity: 65.0%
Test Distance: 6.360m [K=1.0000]
Remarks:

AAI Figure

Test:U:24.00V I:0.4232A P:10.16W PF:1.000 Freq:0Hz Lamp Flux:692.508x1 lm		
NAME: SF17-24V-2835-120-2700-80	TYPE:	WEIGHT:
SPEC.:	DIM.: Length=1m	SERIAL No.:
MFR.:	SUR.:	Shielding Angle:



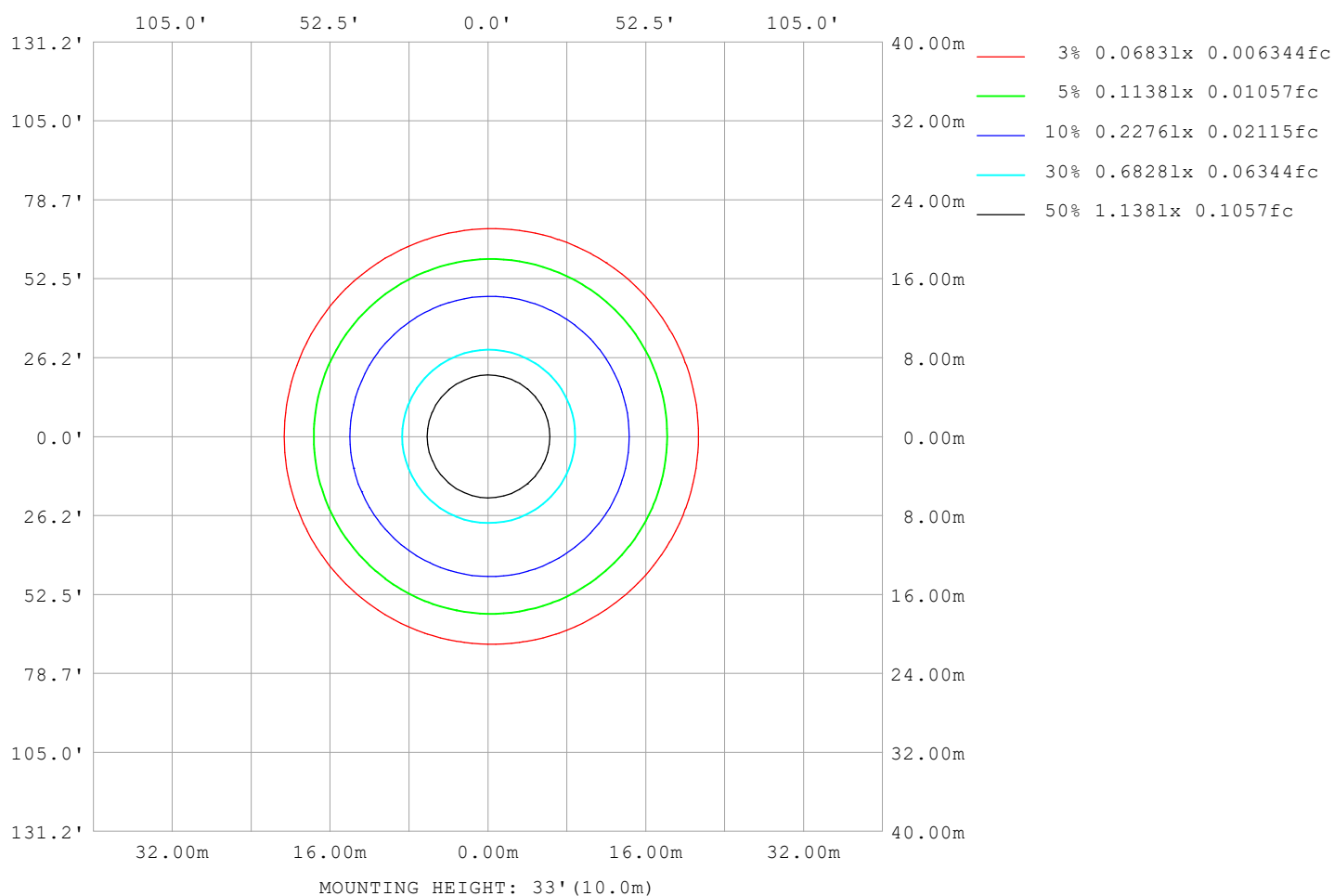
Note: The Curves indicate the illuminated area and the average illumination when the luminaire is at different distance.

C Range: 0 - 360DEG
C Interval: 22.5DEG
Test Speed: HIGH
Temperature: 25.3°C
Operators: Cloud
Test Date: 2024-10-24

γ Range: 0 - 180DEG
γ Interval: 1.0DEG
Test System: EVERFINE GO-2000B_V1 SYSTEM V2.00.488
Humidity: 65.0%
Test Distance: 6.360m [K=1.0000]
Remarks:

ISOLUX DIAGRAM

Test:U:24.00V I:0.4232A P:10.16W PF:1.000 Freq:0Hz Lamp Flux:692.508x1 lm		
NAME: SF17-24V-2835-120-2700-80	TYPE:	WEIGHT:
SPEC.:	DIM.: Length=1m	SERIAL No.:
MFR.:	SUR.:	Shielding Angle:



C Range: 0 - 360DEG
C Interval: 22.5DEG
Test Speed: HIGH
Temperature: 25.3°C
Operators: Cloud
Test Date: 2024-10-24

γ Range: 0 - 180DEG
γ Interval: 1.0DEG
Test System: EVERFINE GO-2000B_V1 SYSTEM V2.00.488
Humidity: 65.0%
Test Distance: 6.360m [K=1.0000]
Remarks:

LED Avg.L Report

Test:U:24.00V I:0.4232A P:10.16W PF:1.000 Freq:0Hz Lamp Flux:692.508x1 lm		
NAME: SF17-24V-2835-120-2700-80	TYPE:	WEIGHT:
SPEC.:	DIM.: Length=1m	SERIAL No.:
MFR.:	SUR.:	Shielding Angle:

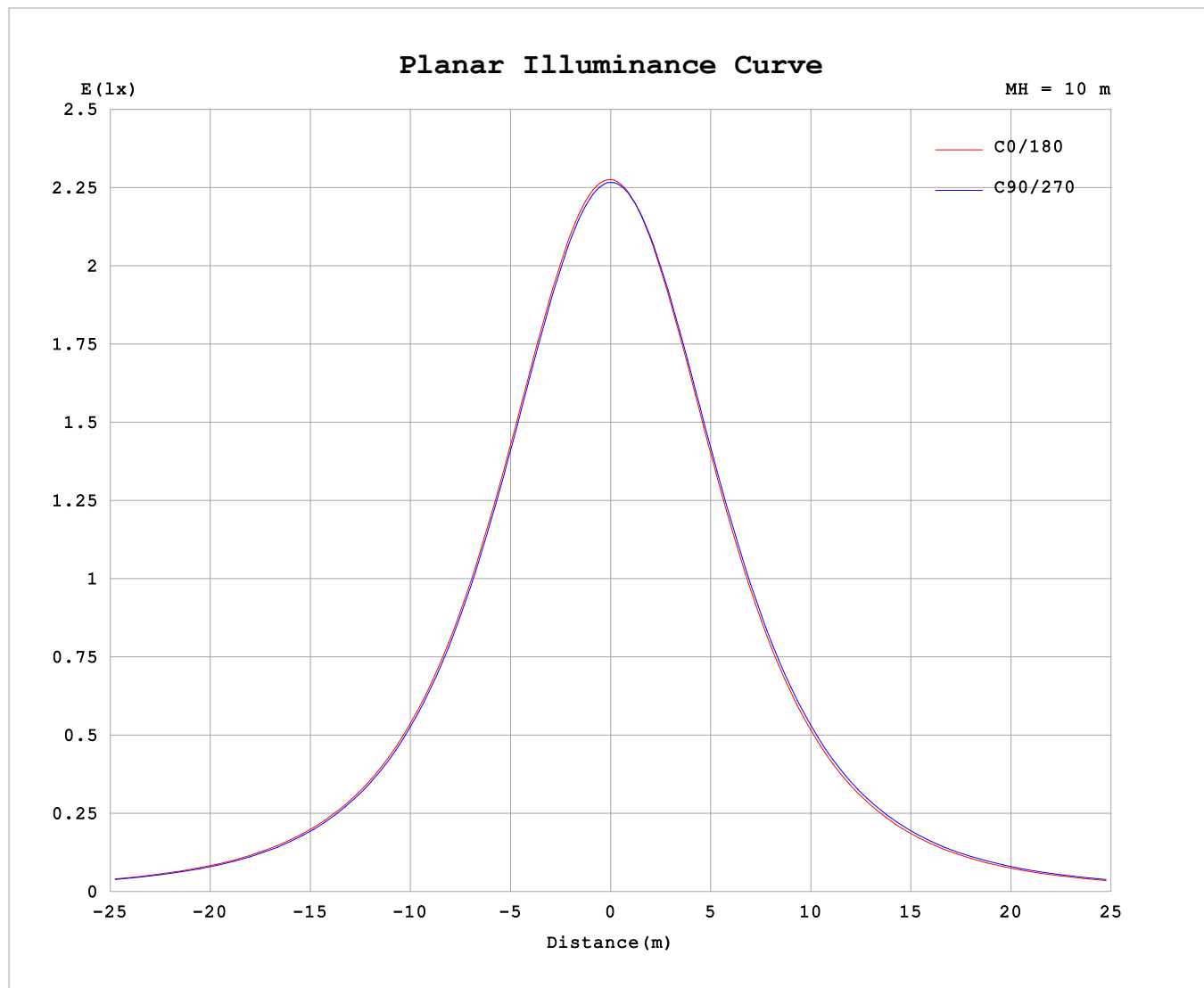
AvgL	cd/m2
L_0~180 (65) av	11673
L_0~180 (75) av	11514
L_0~180 (85) av	12412
L_90~270 (65) av	11846
L_90~270 (75) av	11659
L_90~270 (85) av	12177
L_45 (65) av	11799
L_45 (75) av	11653
L_45 (85) av	12494

Standard: GB/T 29293-2012

C Range: 0 - 360DEG
C Interval: 22.5DEG
Test Speed: HIGH
Temperature:25.3℃
Operators:Cloud
Test Date:2024-10-24

γ Range: 0 - 180DEG
γ Interval: 1.0DEG
Test System:EVERFINE GO-2000B_V1 SYSTEM V2.00.488
Humidity:65.0%
Test Distance:6.360m [K=1.0000]
Remarks:

Planar Illuminance Curve



C Range: 0 - 360DEG
C Interval: 22.5DEG
Test Speed: HIGH
Temperature: 25.3 °C
Operators: Cloud
Test Date: 2024-10-24

γ Range: 0 - 180DEG
 γ Interval: 1.0DEG
Test System: EVERFINE GO-2000B_V1 SYSTEM V2.00.488
Humidity: 65.0%
Test Distance: 6.360m [K=1.0000]
Remarks:

LUMINOUS DISTRIBUTION INTENSITY DATA

Test:U:24.00V I:0.4232A P:10.16W PF:1.000 Freq:0Hz Lamp Flux:692.508x1 lm																		
NAME: SF17-24V-2835-120-2700-80									TYPE:					WEIGHT:				
SPEC.:									DIM.: Length=1m					SERIAL No.:				
MFR.:									SUR.:					Shielding Angle:				

Table--1

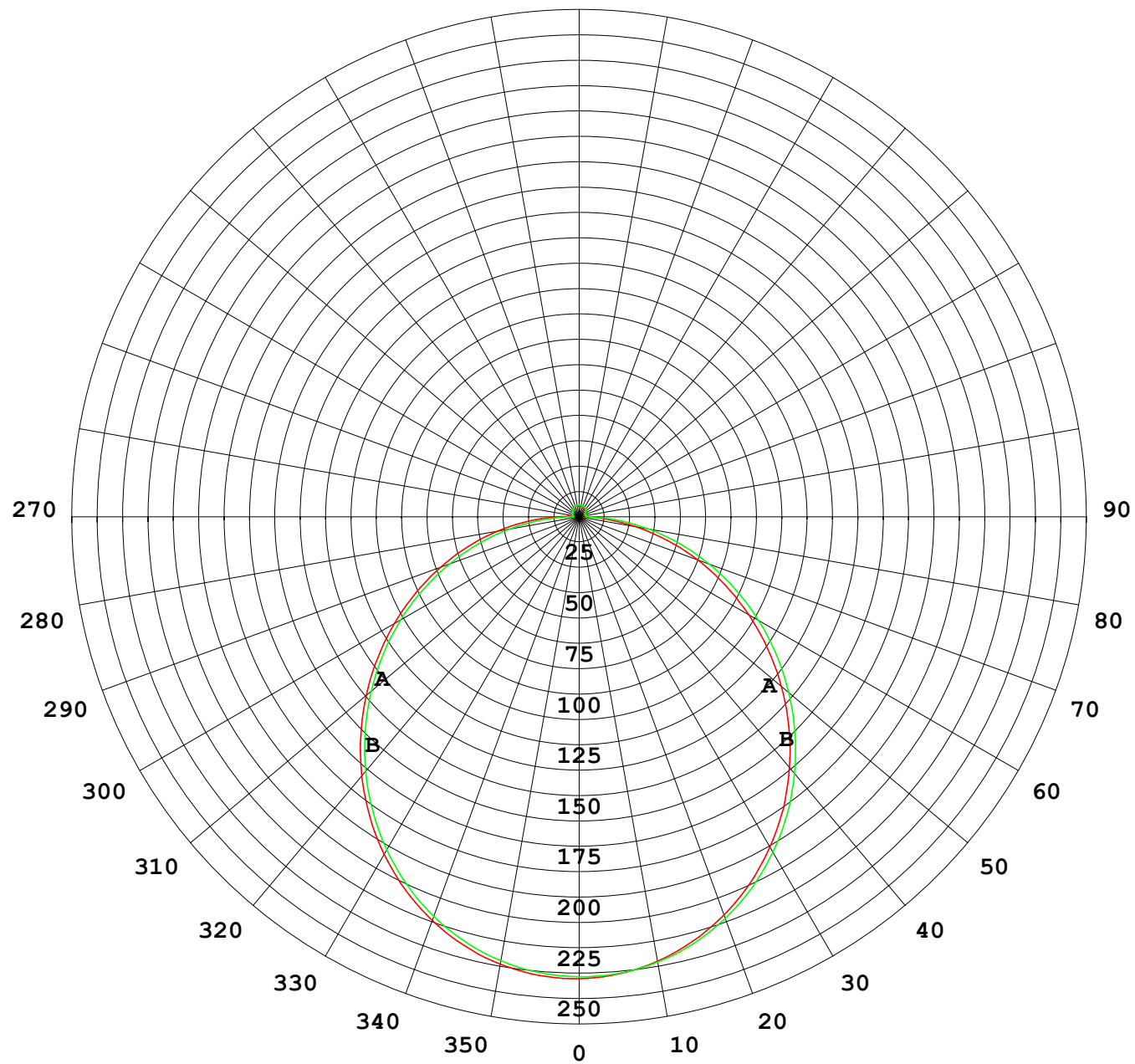
UNIT: cd

γ (DEG)	C (DEG)																	
	0	22.5	45	67.5	90	112.5	135	157.5	180	202.5	225	247.5	270	292.5	315	337.5		
0	227	227	227	227	227	227	227	227	227	227	227	227	227	227	227	227		
5	226	226	226	226	226	226	225	225	225	225	226	226	226	226	226	226		
10	223	223	223	223	222	222	222	222	222	222	222	223	223	223	224	224		
15	218	218	218	218	217	217	216	216	216	216	217	217	218	218	219	219		
20	211	211	211	210	210	209	209	208	208	208	209	210	211	211	212	211		
25	202	202	202	202	201	200	199	199	199	199	200	201	202	203	203	203		
30	192	192	191	191	190	189	188	188	188	188	189	190	191	192	193	192		
35	180	180	179	179	177	177	175	175	175	175	177	177	179	180	181	180		
40	166	166	166	165	164	163	162	161	161	161	163	164	165	166	167	167		
45	152	152	151	151	149	148	147	146	146	146	148	149	151	152	153	153		
50	137	137	136	136	134	133	131	130	130	130	132	133	135	136	138	137		
55	121	121	120	120	118	116	114	113	113	114	115	117	119	121	122	122		
60	105	105	104	103	102	99.8	97.7	96.6	96.3	96.6	98.3	99.8	102	104	106	106		
65	88.6	88.5	87.8	87.0	84.9	82.9	80.7	79.5	79.1	79.5	81.1	82.8	85.3	87.5	89.6	89.5		
70	72.5	72.3	71.4	70.4	68.0	65.9	63.6	62.3	61.9	62.3	63.9	65.7	68.4	70.9	73.0	73.3		
75	56.5	56.3	55.2	53.7	51.2	48.9	46.6	45.3	44.8	45.2	46.7	48.6	51.4	54.3	56.6	57.2		
80	40.6	40.5	39.2	37.4	34.5	32.1	29.8	28.5	28.0	28.3	29.8	31.7	34.6	37.7	40.3	41.1		
85	24.8	24.7	23.2	21.2	18.1	15.7	13.4	12.4	12.0	12.1	13.3	15.0	18.0	21.4	24.1	25.1		
90	10.4	10.1	8.38	5.95	3.15	3.20	3.29	3.39	3.19	3.31	3.45	3.35	3.48	6.25	9.06	10.4		
95	3.77	3.63	3.47	3.09	3.12	3.13	3.07	3.07	2.74	2.94	3.24	3.33	3.48	4.24	4.38	4.27		
100	3.44	3.40	3.38	3.19	3.34	3.34	3.28	3.25	2.88	3.10	3.40	3.50	3.47	4.26	4.23	3.92		
105	3.46	3.45	3.48	3.42	3.54	3.58	3.52	3.48	3.09	3.28	3.60	3.67	3.27	4.37	4.26	3.89		
110	3.58	3.59	3.69	3.78	3.71	3.80	3.75	3.72	3.31	3.49	3.79	3.85	3.15	4.43	4.37	3.92		
115	3.81	3.81	3.89	3.79	3.88	4.01	3.97	3.94	3.53	3.68	3.98	3.98	3.26	4.36	4.48	4.04		
120	4.02	4.02	3.89	3.93	4.03	4.20	4.16	4.15	3.74	3.87	4.17	3.94	3.44	4.20	4.58	4.17		
125	4.23	4.23	3.97	4.10	4.18	4.39	4.37	4.37	3.95	4.06	4.34	4.13	3.77	4.19	4.60	4.30		
130	4.42	4.42	4.12	4.25	4.33	4.57	4.56	4.56	4.16	4.26	4.52	4.51	4.26	4.41	4.37	4.43		
135	4.60	4.59	4.29	4.41	4.47	4.75	4.75	4.74	4.36	4.45	4.70	4.80	4.73	4.95	4.17	4.52		
140	4.77	4.41	4.45	4.57	4.63	4.93	4.92	4.92	4.57	4.65	4.89	5.00	5.03	5.09	4.42	4.53		
145	4.95	4.58	4.61	4.72	4.78	5.12	5.11	5.10	4.77	4.85	5.06	5.16	5.22	5.20	5.02	4.57		
150	5.13	4.74	4.78	4.92	5.22	5.29	5.29	5.27	4.97	5.03	5.23	5.31	5.37	5.31	5.21	4.72		
155	5.31	4.92	4.95	5.38	5.40	5.46	5.45	5.44	5.18	5.23	5.39	5.45	5.52	5.47	5.35	5.17		
160	5.50	5.11	5.48	5.55	5.57	5.63	5.60	5.61	5.37	5.40	5.54	5.59	5.65	5.61	5.54	5.35		
165	5.66	5.26	5.63	5.70	5.72	5.76	5.74	5.74	5.51	5.57	5.67	5.71	5.75	5.72	5.70	5.53		
170	5.42	5.54	5.75	5.82	5.83	5.88	5.83	5.84	5.40	5.71	5.78	5.80	5.84	5.80	5.80	5.71		
175	5.48	5.85	5.85	5.91	5.91	5.94	5.90	5.91	5.48	5.82	5.87	5.87	5.91	5.87	5.87	5.84		
180	5.54	5.89	5.90	5.94	5.95	5.95	5.93	5.93	5.54	5.87	5.90	5.93	5.95	5.95	5.94	5.91		

C Range: 0 - 360DEG
C Interval: 22.5DEG
Test Speed: HIGH
Temperature:25.3℃
Operators:Cloud
Test Date:2024-10-24

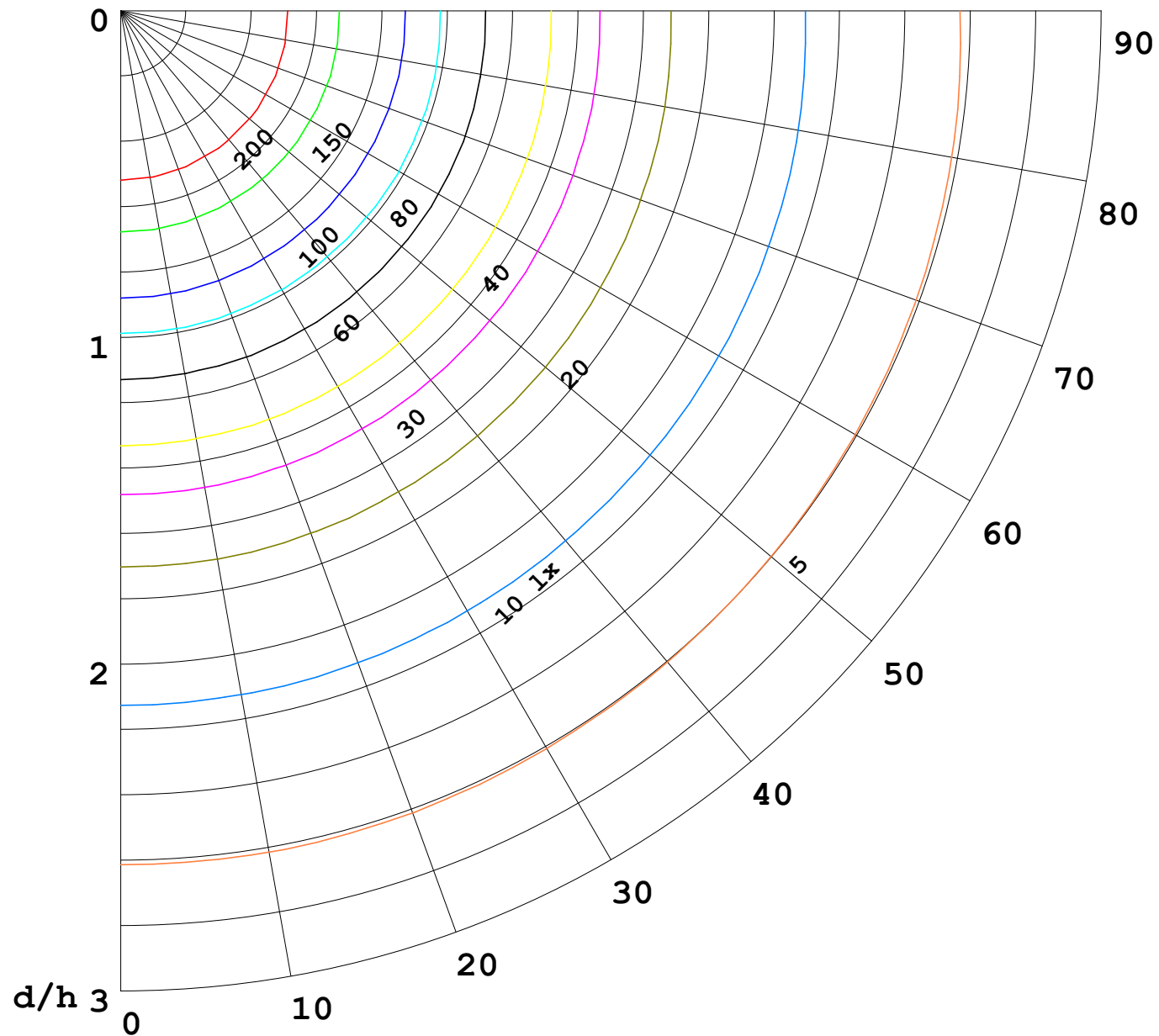
γ Range: 0 - 180DEG
γ Interval: 1.0DEG
Test System:EVERFINE GO-2000B_V1 SYSTEM V2.00.488
Humidity:65.0%
Test Distance:6.360m [K=1.0000]
Remarks:

I (cd)



1000 lm

$\kappa = 1$



F = 1000 lm
 K = 0.7
 Hcc = 0.8 m
 Hfc = 0.0 m
 Eave = 100 lx

	Pcc	Pw	Pfc
—————	70	50	30
—————	50	30	20

