

## LUMINAIRE PHOTOMETRIC TEST REPORT

Test:U:24.00V I:0.1766A P:4.238W PF:1.000 Freq:0Hz

Lamp Flux:29.7705x1 lm

NAME: SF16-24V-5050-72-RGBW-80

TYPE:

WEIGHT:

SPEC.:

DIM.: Length=1m

SERIAL No.:

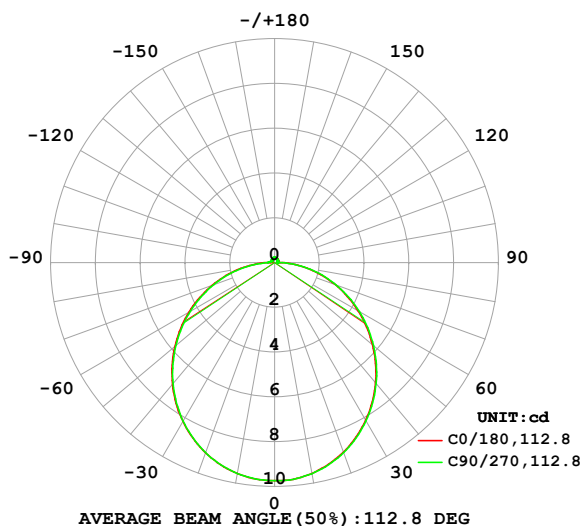
MFR.:

SUR.:

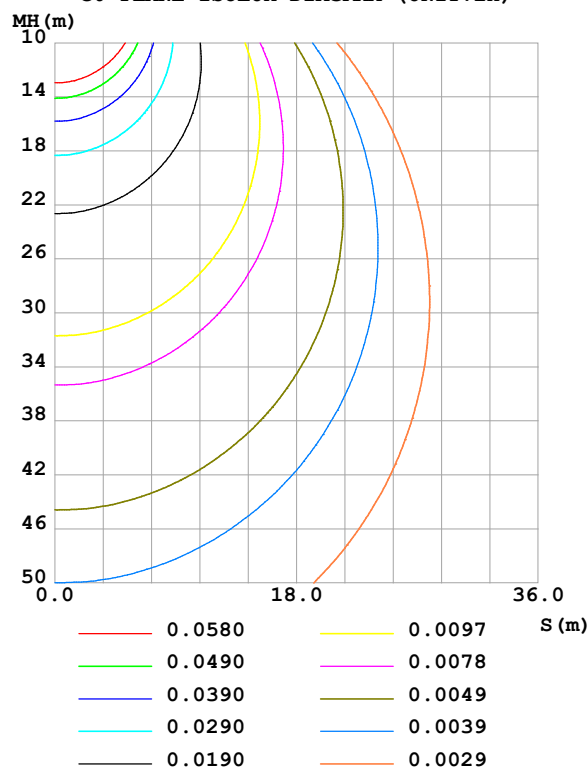
Shielding Angle:

DATA OF LAMP		PHOTOMETRIC DATA				Eff: 7.02 lm/W
MODEL		I <sub>max</sub> (cd)	9.741	S/MH(C0/180)	1.25	
NOMINAL POWER(W)		LOR(%)	100.0	S/MH(C90/270)	1.25	
RATED VOLTAGE(V)		TOTAL FLUX(lm)	29.771	η UP,DN(C0-180)	1.8,48.0	
NOMINAL FLUX(lm)	29.7705	CIE CLASS	DIRECT	η UP,DN(C180-360)	1.9,48.2	
LAMPS INSIDE	1	η up (%)	3.8	CIBSE SHR NOM	1.25	
TEST VOLTAGE(V)		η down (%)	96.2	CIBSE SHR MAX	1.35	

LUMINOUS INTENSITY DISTRIBUTION DIAGRAM



C0 PLANE ISOLUX DIAGRAM (UNIT:lx)



C Range: 0 - 360DEG  
C Interval: 22.5DEG  
Test Speed: HIGH  
Temperature:25.3℃  
Operators:Cloud  
Test Date:2024-10-28

γ Range: 0 - 180DEG  
γ Interval: 1.0DEG  
Test System:EVERFINE GO-2000B\_V1 SYSTEM V2.00.488  
Humidity:65.0%  
Test Distance:6.360m [K=1.0000]  
Remarks: BLUE

## ZONAL FLUX DIAGRAM

## ZONAL FLUX DIAGRAM:

$\gamma$	C0	C45	C90	C135	C180	C225	C270	C315	$\gamma$	$\Phi$ zone	$\Phi$ total	%lum,lamp
10	9.566	9.568	9.574	9.580	9.568	9.562	9.562	9.556	0- 10	0.9218	0.9218	3.1,3.1
20	9.004	9.017	9.026	9.044	9.040	9.045	9.030	9.019	10- 20	2.635	3.557	11.9,11.9
30	8.139	8.154	8.169	8.195	8.194	8.193	8.176	8.167	20- 30	3.979	7.536	25.3,25.3
40	7.014	7.035	7.055	7.082	7.097	7.086	7.060	7.050	30- 40	4.782	12.32	41.4,41.4
50	5.713	5.733	5.767	5.789	5.805	5.790	5.755	5.745	40- 50	4.961	17.28	58,58
60	4.305	4.332	4.375	4.383	4.412	4.387	4.349	4.342	50- 60	4.534	21.81	73.3,73.3
70	2.877	2.903	2.926	2.940	2.972	2.937	2.903	2.902	60- 70	3.606	25.42	85.4,85.4
80	1.467	1.485	1.491	1.514	1.545	1.508	1.462	1.473	70- 80	2.327	27.75	93.2,93.2
90	0.3729	0.3126	0.1482	0.3126	0.3886	0.3053	0.3182	0.2995	80- 90	0.9084	28.65	96.2,96.2
100	0.1456	0.1346	0.1300	0.1328	0.1368	0.1530	0.2418	0.2112	90-100	0.1976	28.85	96.9,96.9
110	0.1420	0.1385	0.1381	0.1375	0.1434	0.1674	0.1654	0.1835	100-110	0.1611	29.01	97.5,97.5
120	0.1564	0.1482	0.1501	0.1553	0.1587	0.1763	0.1617	0.1558	110-120	0.1554	29.17	98,98
130	0.1737	0.1588	0.1662	0.1684	0.1769	0.1856	0.1900	0.1680	120-130	0.1509	29.32	98.5,98.5
140	0.1884	0.1790	0.1778	0.1875	0.1961	0.2018	0.2039	0.2021	130-140	0.1418	29.46	99,99
150	0.2011	0.1963	0.1991	0.1997	0.2087	0.2166	0.2194	0.2193	140-150	0.1246	29.59	99.4,99.4
160	0.2139	0.2136	0.2151	0.2181	0.2227	0.2310	0.2367	0.2311	150-160	0.0992	29.68	99.7,99.7
170	0.2270	0.2236	0.2252	0.2289	0.2240	0.2357	0.2367	0.2327	160-170	0.0640	29.75	99.9,99.9
180	0.2279	0.2339	0.2396	0.2338	0.2250	0.2339	0.2367	0.2338	170-180	0.0220	29.77	100,100
DEG	LUMINOUS INTENSITY:cd									UNIT:lm		

Conical surface Flux(90deg): 14.816 lm

%lum = 49.8%

%lamp = 49.8%

Conical surface Flux(130deg): 23.757 lm

%lum = 79.8%

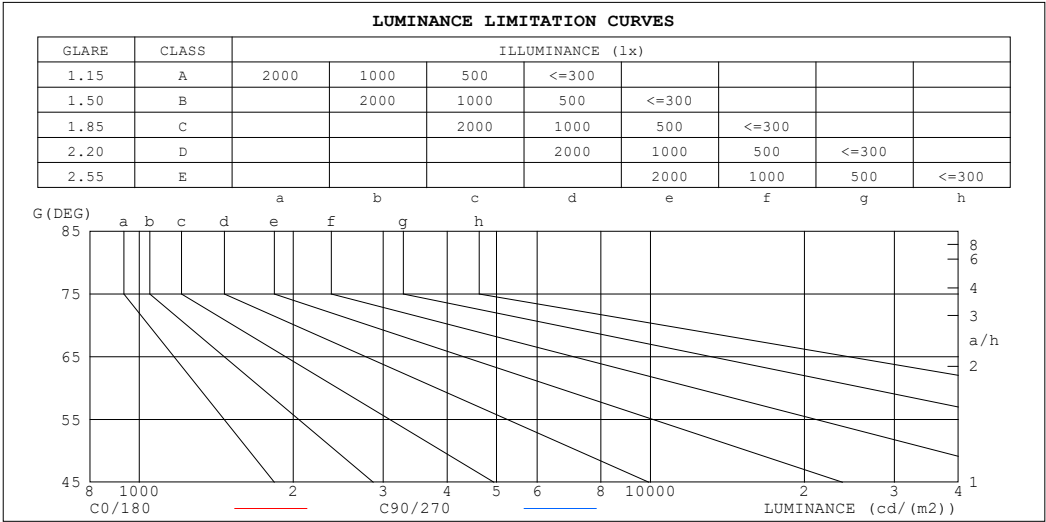
%lamp = 79.8%

C Range: 0 - 360DEG  
 C Interval: 22.5DEG  
 Test Speed: HIGH  
 Temperature:25.3℃  
 Operators:Cloud  
 Test Date:2024-10-28

$\gamma$  Range: 0 - 180DEG  
 $\gamma$  Interval: 1.0DEG  
 Test System:EVERFINE GO-2000B\_V1 SYSTEM V2.00.488  
 Humidity:65.0%  
 Test Distance:6.360m [K=1.0000]  
 Remarks: BLUE

LUMINANCE LIMITATION CURVES

Test:U:24.00V I:0.1766A P:4.238W PF:1.000 Freq:0Hz Lamp Flux:29.7705x1 lm		
NAME: SF16-24V-5050-72-RGBW-80	TYPE:	WEIGHT:
SPEC.:	DIM.: Length=1m	SERIAL No.:
MFR.:	SUR.:	Shielding Angle:



LUMINANCE cd/(m2)		
G (DEG)	C0/180	C90/270
85	544	533
80	497	505
75	492	501
70	495	503
65	500	509
60	507	515
55	515	521
50	523	528
45	531	535

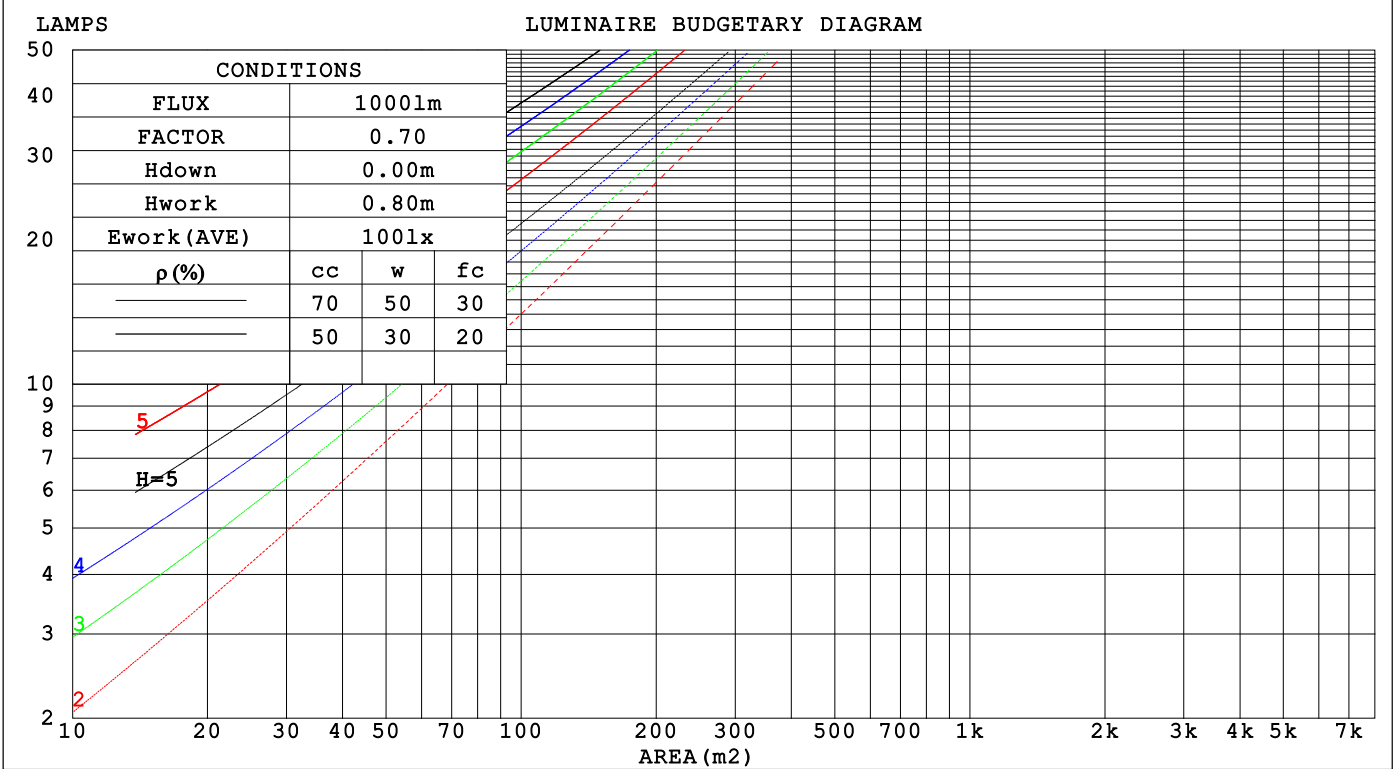
C Range: 0 - 360DEG  
C Interval: 22.5DEG  
Test Speed: HIGH  
Temperature:25.3℃  
Operators:Cloud  
Test Date:2024-10-28

γ Range: 0 - 180DEG  
γ Interval: 1.0DEG  
Test System:EVERFINE GO-2000B\_V1 SYSTEM V2.00.488  
Humidity:65.0%  
Test Distance:6.360m [K=1.0000]  
Remarks: BLUE

CU AND LUMINAIRE BUDGETARY ESTIMATE DIAGRAM

Test:U:24.00V I:0.1766A P:4.238W PF:1.000 Freq:0Hz		
Lamp Flux:29.7705x1 lm		
NAME: SF16-24V-5050-72-RGBW-80	TYPE:	WEIGHT:
SPEC.:	DIM.: Length=1m	SERIAL No.:
MFR.:	SUR.:	Shielding Angle:

pcc	80%			70%			50%			30%			10%			0
p <sub>w</sub>	50%	30%	10%	50%	30%	10%	50%	30%	10%	50%	30%	10%	50%	30%	10%	0
p <sub>f</sub> c	20%			20%			20%			20%			20%			0
RCR	RCR:Room Cavity Ratio															



C Range: 0 - 360DEG

C Interval: 22.5DEG

Test Speed: HIGH

Temperature:25.3℃

Operators:Cloud

Test Date:2024-10-28

γ Range: 0 - 180DEG

γ Interval: 1.0DEG

Test System:EVERFINE GO-2000B\_V1 SYSTEM V2.00.488

Humidity:65.0%

Test Distance:6.360m [K=1.0000]

Remarks: BLUE

## WEC AND CCEC

Test:U:24.00V I:0.1766A P:4.238W PF:1.000 Freq:0Hz Lamp Flux:29.7705x1 lm		
NAME: SF16-24V-5050-72-RGBW-80	TYPE:	WEIGHT:
SPEC.:	DIM.: Length=1m	SERIAL No.:
MFR.:	SUR.:	Shielding Angle:

pcc	80%			70%			50%			30%			10%			0														
pw	50%	30%	10%	50%	30%	10%	50%	30%	10%	50%	30%	10%	50%	30%	10%	0														
pfc	20%			20%			20%			20%			20%			0														
RCR	RCR:Room Cavity Ratio															Wall Exitance Coefficients(WEC)														
0.0																														
1.0	.327	.186	.059	.318	.182	.058	.303	.174	.055	.289	.166	.053	.276	.160	.051															
2.0	.301	.165	.051	.294	.162	.050	.280	.156	.048	.267	.150	.047	.256	.145	.046															
3.0	.276	.147	.044	.269	.144	.043	.257	.139	.042	.246	.135	.041	.235	.130	.040															
4.0	.253	.132	.039	.247	.129	.038	.236	.125	.037	.226	.121	.037	.217	.118	.036															
5.0	.233	.119	.034	.228	.117	.034	.218	.114	.033	.209	.110	.033	.200	.107	.032															
6.0	.215	.108	.031	.211	.106	.031	.202	.104	.030	.194	.101	.030	.186	.098	.029															
7.0	.200	.099	.028	.196	.098	.028	.188	.095	.027	.181	.093	.027	.174	.090	.027															
8.0	.187	.091	.026	.183	.090	.025	.176	.088	.025	.169	.086	.025	.163	.083	.024															
9.0	.175	.084	.024	.171	.083	.023	.165	.081	.023	.159	.080	.023	.153	.078	.022															
10.0	.164	.079	.022	.161	.078	.022	.155	.076	.021	.149	.074	.021	.144	.073	.021															

pcc	80%			70%			50%			30%			10%			0
pw	50%	30%	10%	50%	30%	10%	50%	30%	10%	50%	30%	10%	50%	30%	10%	0
pfc	20%			20%			20%			20%			20%			0
RCR	RCR:Room Cavity Ratio						Ceiling Cavity Exitance Coefficients (CCEC)									
0.0	.219	.219	.219	.187	.187	.187	.128	.128	.128	.073	.073	.073	.023	.023	.023	
1.0	.210	.185	.162	.180	.159	.139	.123	.109	.096	.071	.063	.056	.023	.020	.018	
2.0	.202	.161	.126	.173	.138	.109	.119	.096	.076	.069	.056	.044	.022	.018	.014	
3.0	.195	.143	.103	.167	.124	.089	.115	.086	.062	.066	.050	.037	.021	.016	.012	
4.0	.187	.130	.087	.161	.113	.076	.110	.079	.053	.064	.046	.031	.021	.015	.010	
5.0	.180	.120	.076	.154	.104	.066	.106	.073	.047	.062	.043	.028	.020	.014	.009	
6.0	.172	.112	.068	.148	.097	.060	.102	.068	.042	.059	.040	.025	.019	.013	.008	
7.0	.165	.105	.063	.142	.091	.055	.098	.064	.039	.057	.038	.023	.018	.012	.008	
8.0	.159	.099	.058	.137	.086	.051	.095	.060	.036	.055	.036	.021	.018	.012	.007	
9.0	.153	.094	.055	.132	.082	.048	.091	.058	.034	.053	.034	.020	.017	.011	.007	
10.0	.147	.090	.052	.127	.078	.045	.088	.055	.032	.051	.033	.019	.017	.011	.006	

C Range: 0 - 360DEG  
C Interval: 22.5DEG  
Test Speed: HIGH  
Temperature:25.3℃  
Operators:Cloud  
Test Date:2024-10-28

γ Range: 0 - 180DEG  
γ Interval: 1.0DEG  
Test System:EVERFINE GO-2000B\_V1 SYSTEM V2.00.488  
Humidity:65.0%  
Test Distance:6.360m [K=1.0000]  
Remarks: BLUE

## UGR(Unified Glare Rating) Table

Test:U:24.00V I:0.1766A P:4.238W PF:1.000 Freq:0Hz Lamp Flux:29.7705x1 lm											
NAME: SF16-24V-5050-72-RGBW-80					TYPE:			WEIGHT:			
SPEC.:					DIM.: Length=1m			SERIAL No.:			
MFR.:					SUR.:			Shielding Angle:			
ceiling/cavity		0.7	0.7	0.5	0.5	0.3	0.7	0.7	0.5	0.5	0.3
walls		0.5	0.3	0.5	0.3	0.3	0.5	0.3	0.5	0.3	0.3
working plane		0.2	0.2	0.2	0.2	0.2	0.2	0.2	0.2	0.2	0.2
Room dimensions		Viewed crosswise					Viewed endwise				
x = 2H y = 2H	2H	22.5	24.0	22.8	24.3	24.5	22.5	24.0	22.9	24.3	24.6
	3H	24.2	25.5	24.5	25.9	26.2	24.2	25.6	24.6	25.9	26.2
	4H	24.9	26.2	25.3	26.5	26.9	25.0	26.3	25.4	26.6	27.0
	6H	25.5	26.8	25.9	27.1	27.5	25.6	26.9	26.0	27.2	27.6
	8H	25.8	27.0	26.2	27.3	27.7	25.9	27.1	26.3	27.4	27.8
	12H	26.0	27.1	26.4	27.5	27.9	26.1	27.2	26.5	27.6	28.0
4H	2H	23.1	24.5	23.5	24.8	25.1	23.2	24.5	23.5	24.8	25.1
	3H	25.0	26.2	25.4	26.5	26.9	25.1	26.2	25.5	26.6	27.0
	4H	25.9	27.0	26.3	27.3	27.8	26.0	27.0	26.4	27.4	27.8
	6H	26.7	27.6	27.1	28.0	28.5	26.7	27.7	27.2	28.1	28.5
	8H	27.0	27.9	27.5	28.3	28.8	27.1	27.9	27.5	28.4	28.8
	12H	27.3	28.1	27.7	28.5	29.0	27.3	28.1	27.8	28.6	29.1
8H	4H	26.2	27.1	26.7	27.5	28.0	26.3	27.2	26.8	27.6	28.1
	6H	27.2	27.9	27.7	28.4	28.9	27.3	28.0	27.8	28.5	29.0
	8H	27.6	28.3	28.2	28.8	29.3	27.7	28.3	28.2	28.8	29.4
	12H	28.0	28.6	28.6	29.1	29.6	28.1	28.6	28.6	29.1	29.7
12H	4H	26.3	27.1	26.8	27.5	28.0	26.3	27.1	26.8	27.6	28.1
	6H	27.3	27.9	27.8	28.4	29.0	27.4	28.0	27.9	28.5	29.0
	8H	27.8	28.3	28.3	28.9	29.4	27.8	28.4	28.4	28.9	29.5
Variations with the observer position at spacings(CIE Pub.117):											
S = 1.0H		+ 0.1 / - 0.2					+ 0.1 / - 0.2				
1.5H		+ 0.2 / - 0.3					+ 0.2 / - 0.3				
2.0H		+ 0.1 / - 0.3					+ 0.1 / - 0.3				

CIE Pub.117, 29.77 lm Total Lamp Luminous Flux Correct (8log(F/F0) = -12.2)  
Area: 0.017 m2

C Range: 0 - 360DEG  
C Interval: 22.5DEG  
Test Speed: HIGH  
Temperature:25.3℃  
Operators:Cloud  
Test Date:2024-10-28

γ Range: 0 - 180DEG  
γ Interval: 1.0DEG  
Test System:EVERFINE GO-2000B\_V1 SYSTEM V2.00.488  
Humidity:65.0%  
Test Distance:6.360m [K=1.0000]  
Remarks: BLUE

## UTILIZATION FACTORS TABLE

Test:U:24.00V I:0.1766A P:4.238W PF:1.000 Freq:0Hz Lamp Flux:29.7705x1 lm		
NAME: SF16-24V-5050-72-RGBW-80	TYPE:	WEIGHT:
SPEC.:	DIM.: Length=1m	SERIAL No.:
MFR.:	SUR.:	Shielding Angle:

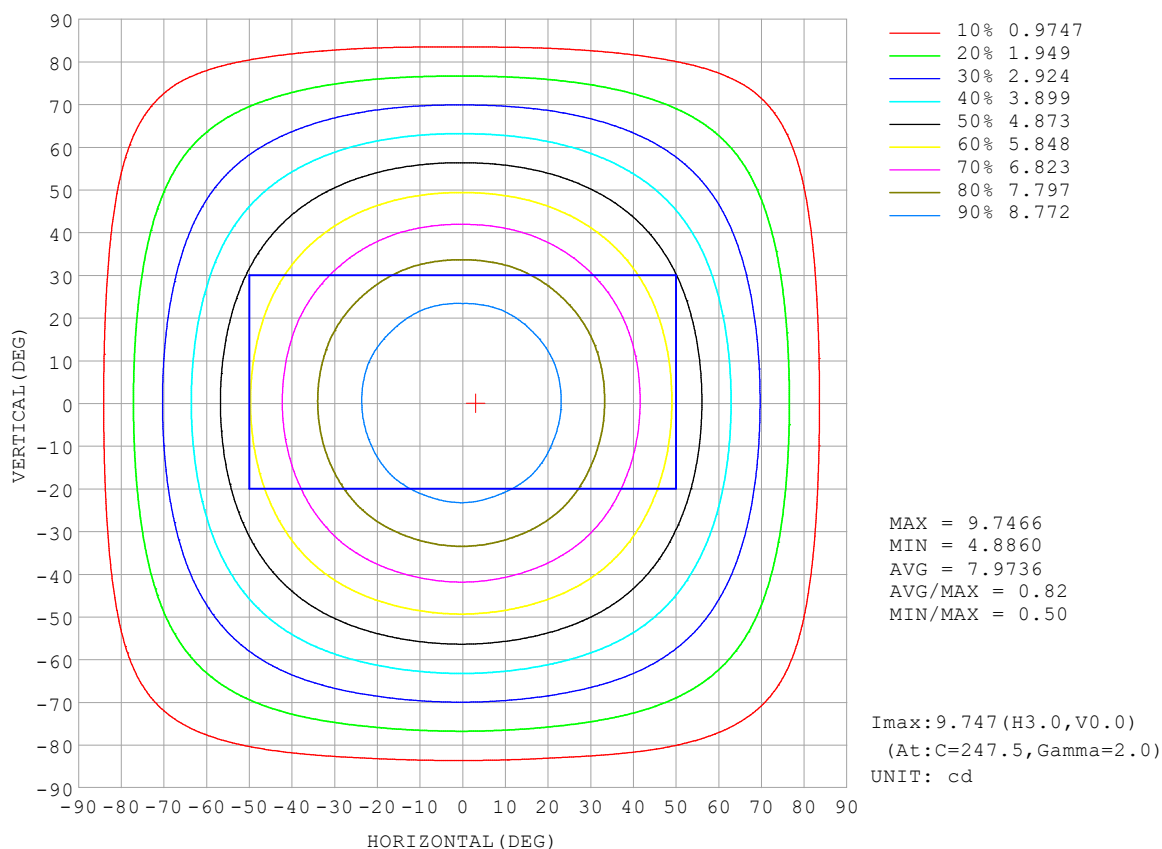
REFLECTANCE										
Ceiling	0.8	0.8	0.8	0.7	0.7	0.7	0.5	0.5	0.5	0
Walls	0.7	0.5	0.3	0.7	0.5	0.3	0.7	0.5	0.3	0
Working plane	0.2	0.2	0.2	0.2	0.2	0.2	0.2	0.2	0.2	0
ROOM INDEX	UTILIZATION FACTORS (PERCENT) $k(RI) \times RCR = 5$									
$k = 0.60$	56	44	37	55	44	37	53	43	36	30
0.80	65	54	46	64	53	46	62	52	45	38
1.00	74	62	55	72	62	54	70	63	54	46
1.25	81	70	62	79	69	62	76	67	61	53
1.50	86	75	68	84	74	67	80	72	66	58
2.00	93	84	77	91	82	76	87	80	74	65
2.50	97	88	82	94	87	81	90	84	79	69
3.00	100	93	87	98	91	86	93	88	83	73
4.00	104	98	93	102	96	92	97	92	88	78
5.00	107	102	97	104	99	95	99	95	92	81
ROOM INDEX	UF (total)									Direct
According to DIN EN 13032-2 2004			Suspended					SHRNOM = 1.25		

C Range: 0 - 360DEG  
 C Interval: 22.5DEG  
 Test Speed: HIGH  
 Temperature: 25.3°C  
 Operators: Cloud  
 Test Date: 2024-10-28

γ Range: 0 - 180DEG  
 γ Interval: 1.0DEG  
 Test System: EVERFINE GO-2000B\_V1 SYSTEM V2.00.488  
 Humidity: 65.0%  
 Test Distance: 6.360m [K=1.0000]  
 Remarks: BLUE

## ISOCANDELA DIAGRAM

Test:U:24.00V I:0.1766A P:4.238W PF:1.000 Freq:0Hz Lamp Flux:29.7705x1 lm		
NAME: SF16-24V-5050-72-RGBW-80	TYPE:	WEIGHT:
SPEC.:	DIM.: Length=1m	SERIAL No.:
MFR.:	SUR.:	Shielding Angle:



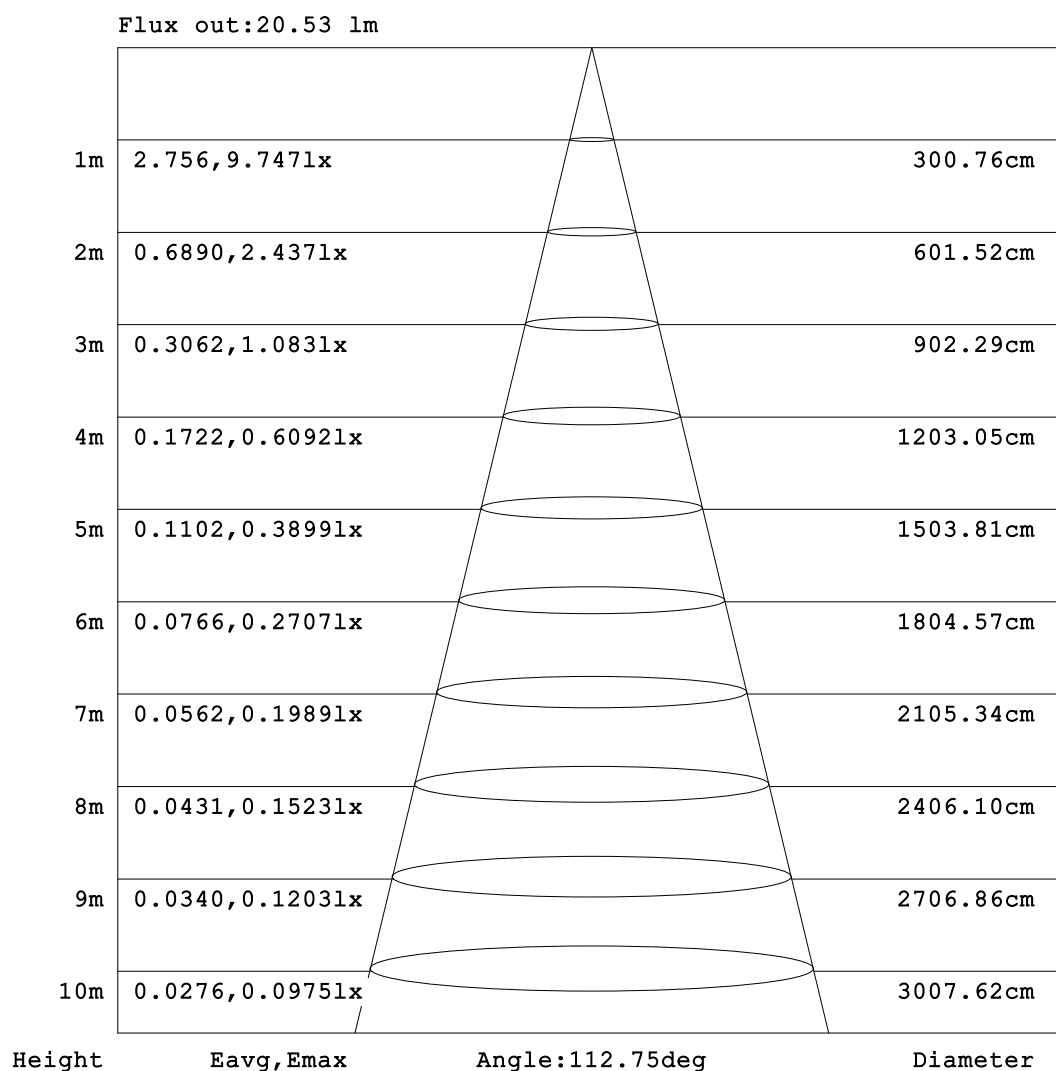
C Range: 0 - 360DEG  
C Interval: 22.5DEG  
Test Speed: HIGH  
Temperature: 25.3°C  
Operators: Cloud  
Test Date: 2024-10-28

γ Range: 0 - 180DEG  
γ Interval: 1.0DEG  
Test System: EVERFINE GO-2000B\_V1 SYSTEM V2.00.488  
Humidity: 65.0%  
Test Distance: 6.360m [K=1.0000]  
Remarks: BLUE



## AAI Figure

Test:U:24.00V I:0.1766A P:4.238W PF:1.000 Freq:0Hz Lamp Flux:29.7705x1 lm		
NAME: SF16-24V-5050-72-RGBW-80	TYPE:	WEIGHT:
SPEC.:	DIM.: Length=1m	SERIAL No.:
MFR.:	SUR.:	Shielding Angle:



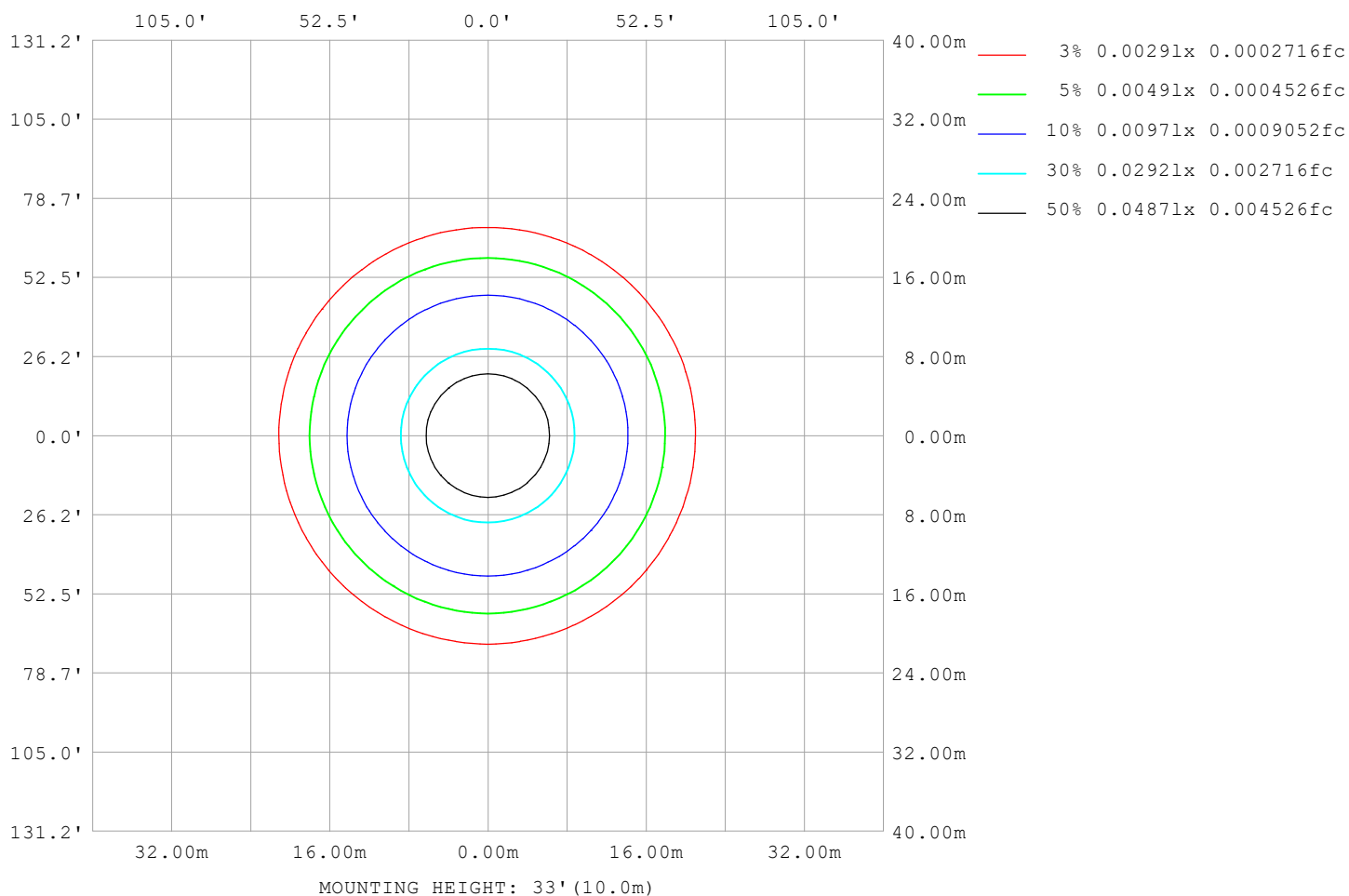
Note:The Curves indicate the illuminated area and the average illumination when the luminaire is at different distance.

C Range: 0 - 360DEG  
C Interval: 22.5DEG  
Test Speed: HIGH  
Temperature:25.3℃  
Operators:Cloud  
Test Date:2024-10-28

γ Range: 0 - 180DEG  
γ Interval: 1.0DEG  
Test System:EVERFINE GO-2000B\_V1 SYSTEM V2.00.488  
Humidity:65.0%  
Test Distance:6.360m [K=1.0000]  
Remarks: BLUE

## ISOLUX DIAGRAM

Test:U:24.00V I:0.1766A P:4.238W PF:1.000 Freq:0Hz Lamp Flux:29.7705x1 lm		
NAME: SF16-24V-5050-72-RGBW-80	TYPE:	WEIGHT:
SPEC.:	DIM.: Length=1m	SERIAL No.:
MFR.:	SUR.:	Shielding Angle:



C Range: 0 - 360DEG  
C Interval: 22.5DEG  
Test Speed: HIGH  
Temperature: 25.3°C  
Operators: Cloud  
Test Date: 2024-10-28

γ Range: 0 - 180DEG  
γ Interval: 1.0DEG  
Test System: EVERFINE GO-2000B\_V1 SYSTEM V2.00.488  
Humidity: 65.0%  
Test Distance: 6.360m [K=1.0000]  
Remarks: BLUE

## LED Avg.L Report

Test:U:24.00V I:0.1766A P:4.238W PF:1.000 Freq:0Hz Lamp Flux:29.7705x1 lm		
NAME: SF16-24V-5050-72-RGBW-80	TYPE:	WEIGHT:
SPEC.:	DIM.: Length=1m	SERIAL No.:
MFR.:	SUR.:	Shielding Angle:

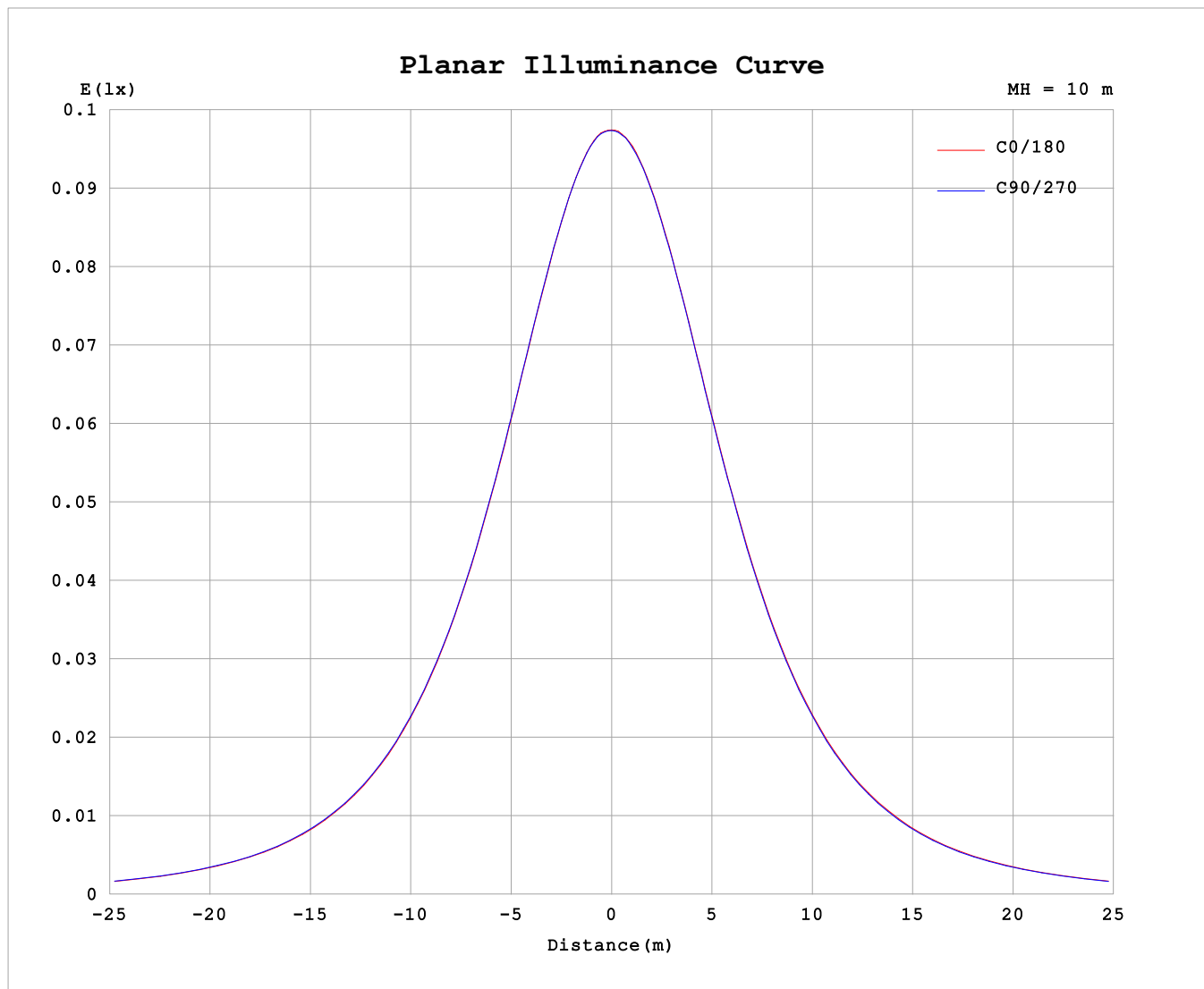
AvgL	cd/m2
L_0~180 (65) av	507
L_0~180 (75) av	502
L_0~180 (85) av	567
L_90~270 (65) av	507
L_90~270 (75) av	498
L_90~270 (85) av	523
L_45 (65) av	507
L_45 (75) av	501
L_45 (85) av	541

Standard: GB/T 29293-2012

C Range: 0 - 360DEG  
C Interval: 22.5DEG  
Test Speed: HIGH  
Temperature:25.3℃  
Operators:Cloud  
Test Date:2024-10-28

γ Range: 0 - 180DEG  
γ Interval: 1.0DEG  
Test System:EVERFINE GO-2000B\_V1 SYSTEM V2.00.488  
Humidity:65.0%  
Test Distance:6.360m [K=1.0000]  
Remarks: BLUE

## Planar Illuminance Curve



C Range: 0 - 360DEG  
C Interval: 22.5DEG  
Test Speed: HIGH  
Temperature: 25.3 °C  
Operators: Cloud  
Test Date: 2024-10-28

$\gamma$  Range: 0 - 180DEG  
 $\gamma$  Interval: 1.0DEG  
Test System: EVERFINE GO-2000B\_V1 SYSTEM V2.00.488  
Humidity: 65.0%  
Test Distance: 6.360m [K=1.0000]  
Remarks: BLUE

## LUMINOUS DISTRIBUTION INTENSITY DATA

Test:U:24.00V I:0.1766A P:4.238W PF:1.000 Freq:0Hz Lamp Flux:29.7705x1 lm																	
NAME: SF16-24V-5050-72-RGBW-80									TYPE:						WEIGHT:		
SPEC.:									DIM.: Length=1m						SERIAL No.:		
MFR.:									SUR.:						Shielding Angle:		

Table--1

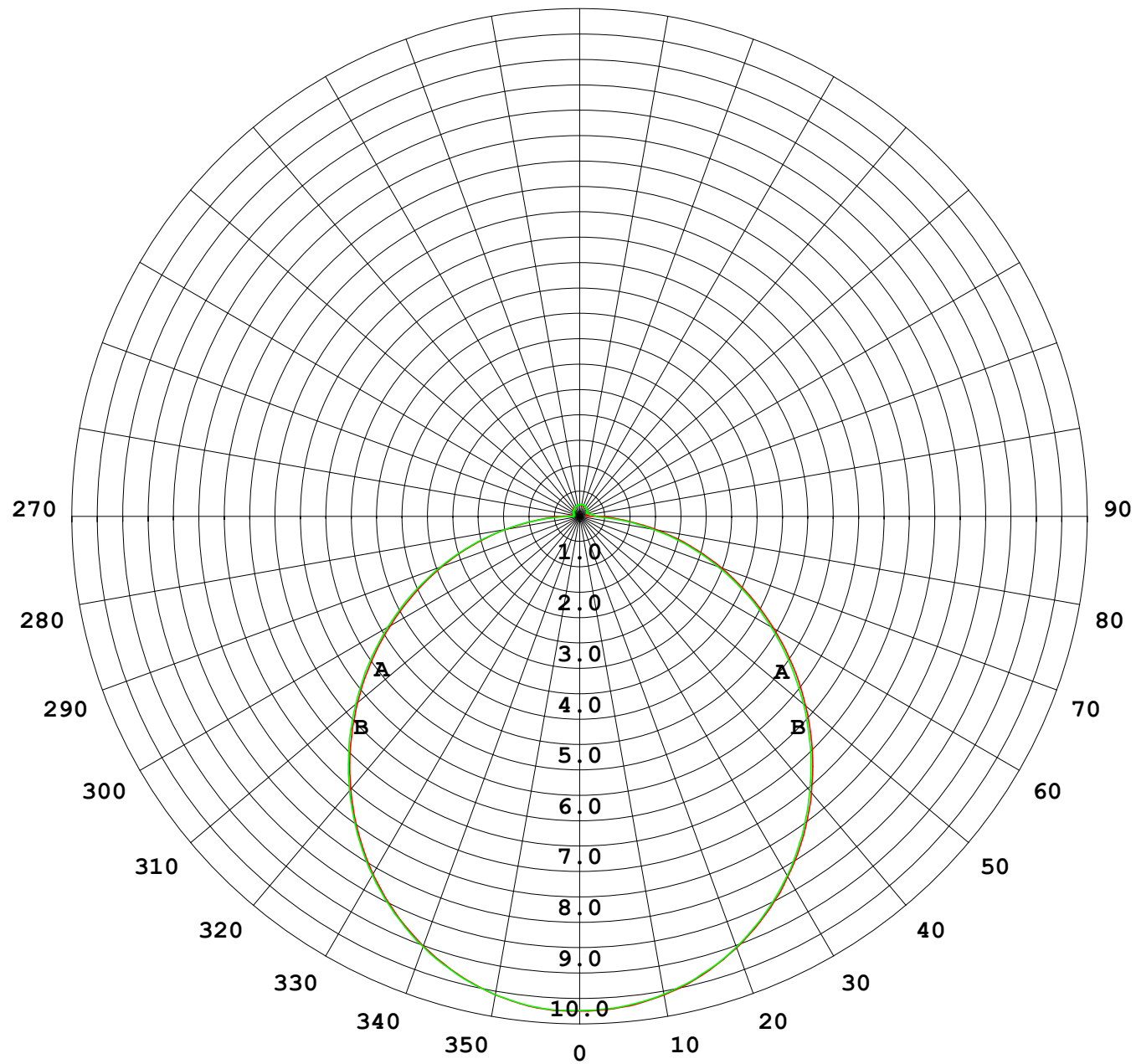
UNIT: cd

C (DEG) γ (DEG)	0	22.5	45	67.5	90	112.5	135	157.5	180	202.5	225	247.5	270	292.5	315	337.5			
0	9.74	9.74	9.74	9.74	9.74	9.74	9.74	9.74	9.74	9.74	9.74	9.74	9.74	9.74	9.74	9.74			
5	9.71	9.69	9.71	9.69	9.71	9.69	9.72	9.68	9.70	9.72	9.70	9.72	9.69	9.72	9.69	9.72			
10	9.57	9.54	9.57	9.54	9.57	9.55	9.58	9.55	9.57	9.59	9.56	9.59	9.56	9.59	9.56	9.57			
15	9.32	9.30	9.33	9.32	9.34	9.32	9.35	9.33	9.35	9.37	9.35	9.37	9.33	9.36	9.33	9.34			
20	9.00	8.99	9.02	9.01	9.03	9.01	9.04	9.03	9.04	9.06	9.04	9.06	9.03	9.05	9.02	9.02			
25	8.60	8.59	8.62	8.61	8.64	8.62	8.66	8.64	8.65	8.68	8.65	8.67	8.64	8.66	8.63	8.63			
30	8.14	8.12	8.15	8.14	8.17	8.16	8.20	8.18	8.19	8.22	8.19	8.21	8.18	8.19	8.17	8.16			
35	7.60	7.59	7.62	7.61	7.64	7.64	7.67	7.66	7.68	7.69	7.67	7.67	7.65	7.65	7.63	7.63			
40	7.01	7.00	7.03	7.03	7.05	7.06	7.08	7.08	7.10	7.11	7.09	7.09	7.06	7.07	7.05	7.04			
45	6.38	6.37	6.40	6.41	6.43	6.43	6.45	6.45	6.47	6.49	6.46	6.45	6.43	6.44	6.41	6.41			
50	5.71	5.71	5.73	5.73	5.77	5.76	5.79	5.78	5.81	5.82	5.79	5.79	5.76	5.76	5.74	5.74			
55	5.02	5.01	5.05	5.06	5.08	5.07	5.09	5.09	5.12	5.13	5.10	5.09	5.06	5.07	5.05	5.04			
60	4.31	4.31	4.33	4.34	4.38	4.37	4.38	4.38	4.41	4.41	4.39	4.38	4.35	4.35	4.34	4.34			
65	3.59	3.59	3.62	3.63	3.66	3.65	3.66	3.66	3.69	3.69	3.67	3.65	3.63	3.64	3.62	3.63			
70	2.88	2.88	2.90	2.90	2.93	2.92	2.94	2.94	2.97	2.97	2.94	2.94	2.90	2.91	2.90	2.91			
75	2.17	2.17	2.19	2.19	2.20	2.20	2.22	2.23	2.25	2.26	2.22	2.21	2.18	2.19	2.19	2.20			
80	1.47	1.46	1.49	1.48	1.49	1.50	1.51	1.52	1.54	1.54	1.51	1.49	1.46	1.48	1.47	1.49			
85	0.81	0.79	0.80	0.78	0.79	0.78	0.82	0.84	0.87	0.87	0.81	0.78	0.76	0.77	0.78	0.81			
90	0.37	0.34	0.31	0.20	0.15	0.20	0.31	0.36	0.39	0.39	0.31	0.23	0.32	0.24	0.30	0.37			
95	0.15	0.18	0.14	0.14	0.13	0.13	0.13	0.13	0.17	0.14	0.15	0.16	0.28	0.16	0.23	0.14			
100	0.15	0.15	0.13	0.14	0.13	0.14	0.13	0.14	0.14	0.14	0.15	0.16	0.24	0.16	0.21	0.14			
105	0.14	0.15	0.13	0.15	0.13	0.15	0.13	0.15	0.13	0.14	0.16	0.16	0.20	0.16	0.20	0.14			
110	0.14	0.16	0.14	0.16	0.14	0.16	0.14	0.16	0.14	0.14	0.17	0.16	0.17	0.16	0.18	0.14			
115	0.15	0.17	0.14	0.16	0.14	0.17	0.15	0.17	0.15	0.14	0.17	0.15	0.16	0.16	0.17	0.15			
120	0.16	0.18	0.15	0.17	0.15	0.17	0.16	0.17	0.16	0.15	0.18	0.16	0.16	0.16	0.16	0.15			
125	0.17	0.19	0.15	0.18	0.16	0.18	0.16	0.18	0.17	0.15	0.18	0.16	0.17	0.16	0.16	0.16			
130	0.17	0.19	0.16	0.18	0.17	0.19	0.17	0.19	0.18	0.16	0.19	0.17	0.19	0.17	0.17	0.16			
135	0.18	0.19	0.17	0.19	0.17	0.20	0.18	0.20	0.18	0.17	0.19	0.17	0.20	0.18	0.19	0.17			
140	0.19	0.20	0.18	0.20	0.18	0.21	0.19	0.21	0.20	0.18	0.20	0.18	0.20	0.18	0.20	0.18			
145	0.19	0.20	0.18	0.21	0.19	0.22	0.19	0.22	0.20	0.18	0.21	0.19	0.21	0.19	0.21	0.18			
150	0.20	0.21	0.20	0.21	0.20	0.22	0.20	0.22	0.21	0.19	0.22	0.20	0.22	0.20	0.22	0.20			
155	0.21	0.22	0.20	0.23	0.21	0.23	0.21	0.23	0.22	0.20	0.23	0.21	0.23	0.20	0.23	0.20			
160	0.21	0.22	0.21	0.24	0.22	0.23	0.22	0.23	0.22	0.21	0.23	0.21	0.24	0.21	0.23	0.21			
165	0.22	0.23	0.22	0.24	0.22	0.24	0.22	0.23	0.22	0.22	0.23	0.22	0.24	0.22	0.23	0.22			
170	0.23	0.23	0.22	0.24	0.23	0.24	0.23	0.23	0.22	0.22	0.24	0.22	0.24	0.23	0.23	0.22			
175	0.23	0.23	0.23	0.24	0.23	0.24	0.23	0.23	0.22	0.23	0.24	0.23	0.24	0.23	0.23	0.23			
180	0.23	0.23	0.23	0.24	0.24	0.24	0.23	0.23	0.22	0.23	0.23	0.23	0.24	0.23	0.23	0.23			

C Range: 0 - 360DEG  
C Interval: 22.5DEG  
Test Speed: HIGH  
Temperature:25.3℃  
Operators:Cloud  
Test Date:2024-10-28

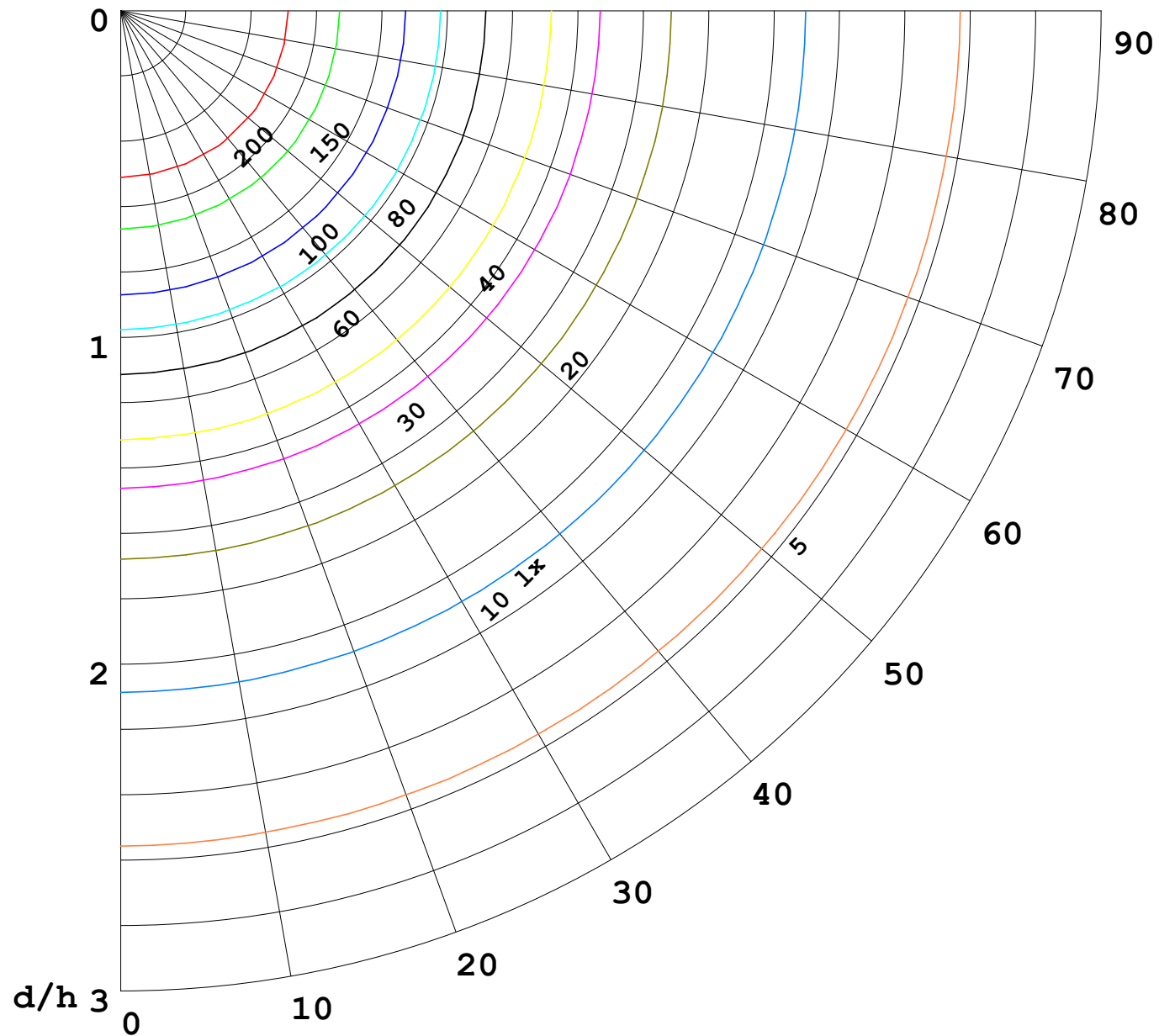
γ Range: 0 - 180DEG  
γ Interval: 1.0DEG  
Test System:EVERFINE GO-2000B\_V1 SYSTEM V2.00.488  
Humidity:65.0%  
Test Distance:6.360m [K=1.0000]  
Remarks: BLUE

I (cd)



1000 lm

$\kappa = 1$



F = 1000 lm  
 K = 0.7  
 Hcc = 0.8 m  
 Hfc = 0.0 m  
 Eave = 100 lx

	Pcc	Pw	Pfc
—————	70	50	30
—————	50	30	20

