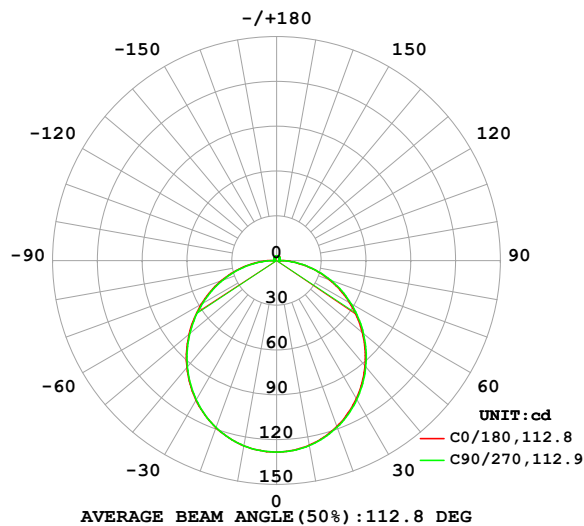


LUMINAIRE PHOTOMETRIC TEST REPORT

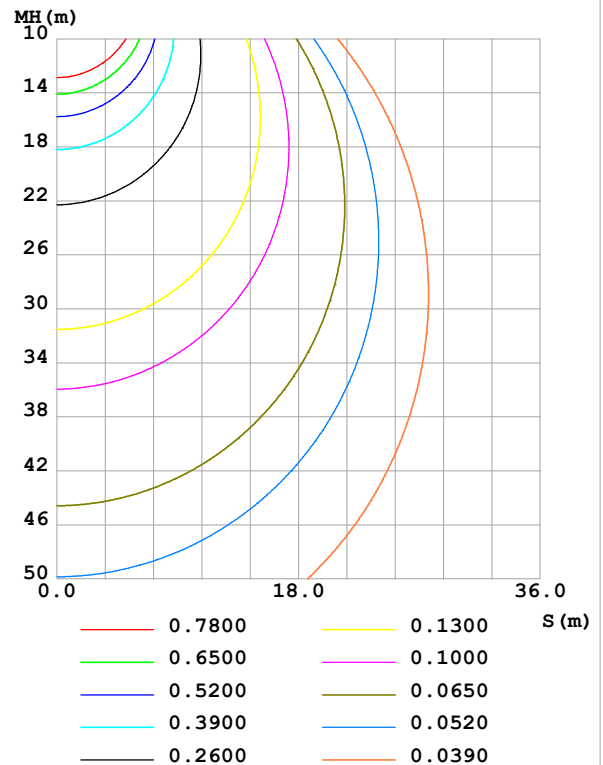
Test:U:24.00V I:0.7165A P:17.20W PF:1.000 Freq:0Hz Lamp Flux:391.756x1 lm		
NAME: SF16-24V-5050-72-RGBW(4000)-80	TYPE:	WEIGHT:
SPEC.:	DIM.: Length=1m	SERIAL No.:
MFR.:	SUR.:	Shielding Angle:

DATA OF LAMP		PHOTOMETRIC DATA Eff: 22.78 lm/W			
MODEL		I _{max} (cd)	128.3	S/MH(C0/180)	1.25
NOMINAL POWER(W)		LOR(%)	100.0	S/MH(C90/270)	1.25
RATED VOLTAGE(V)		TOTAL FLUX(lm)	391.76	η UP,DN(C0-180)	1.8,48.1
NOMINAL FLUX(lm)	391.756	CIE CLASS	DIRECT	η UP,DN(C180-360)	1.8,48.2
LAMPS INSIDE	1	η up (%)	3.7	CIBSE SHR NOM	1.25
TEST VOLTAGE(V)		η down (%)	96.3	CIBSE SHR MAX	1.35

LUMINOUS INTENSITY DISTRIBUTION DIAGRAM



C0 PLANE ISOLUX DIAGRAM (UNIT:lx)



C Range: 0 - 360DEG
C Interval: 22.5DEG
Test Speed: HIGH
Temperature:25.3℃
Operators:Cloud
Test Date:2024-10-28

γ Range: 0 - 180DEG
γ Interval: 1.0DEG
Test System:EVERFINE GO-2000B_V1 SYSTEM V2.00.488
Humidity:65.0%
Test Distance:6.360m [K=1.0000]
Remarks: ALL

ZONAL FLUX DIAGRAM

ZONAL FLUX DIAGRAM:

γ	C0	C45	C90	C135	C180	C225	C270	C315	γ	Φ zone	Φ total	%lum, lamp
10	125.6	125.8	125.8	125.9	126.0	126.0	126.0	125.9	0- 10	12.13	12.13	3.1,3.1
20	118.2	118.6	118.7	118.9	119.1	119.1	119.0	118.8	10- 20	34.68	46.81	11.9,11.9
30	106.9	107.2	107.5	107.8	108.0	108.0	107.7	107.5	20- 30	52.38	99.19	25.3,25.3
40	92.12	92.56	92.93	93.24	93.57	93.42	93.03	92.83	30- 40	62.96	162.1	41.4,41.4
50	75.04	75.52	75.99	76.24	76.57	76.33	75.88	75.70	40- 50	65.33	227.5	58.1,58.1
60	56.61	57.08	57.62	57.75	58.17	57.86	57.37	57.25	50- 60	59.73	287.2	73.3,73.3
70	37.74	38.16	38.58	38.74	39.24	38.87	38.35	38.28	60- 70	47.52	334.7	85.4,85.4
80	19.18	19.45	19.60	19.94	20.49	20.03	19.44	19.50	70- 80	30.68	365.4	93.3,93.3
90	4.801	3.920	1.713	4.022	5.250	4.157	1.980	4.046	80- 90	11.95	377.4	96.3,96.3
100	1.742	1.711	1.766	1.709	1.570	1.899	1.986	1.976	90-100	2.305	379.7	96.9,96.9
110	1.986	1.959	1.989	1.953	1.774	2.049	1.957	2.118	100-110	1.996	381.7	97.4,97.4
120	2.221	2.124	2.186	2.193	1.992	2.202	2.004	2.260	110-120	2.055	383.7	97.9,97.9
130	2.435	2.302	2.370	2.414	2.215	2.372	2.250	2.324	120-130	2.018	385.7	98.5,98.5
140	2.633	2.498	2.547	2.622	2.433	2.562	2.524	2.336	130-140	1.882	387.6	98.9,98.9
150	2.822	2.680	2.815	2.828	2.668	2.775	2.790	2.626	140-150	1.656	389.3	99.4,99.4
160	2.986	2.971	3.012	3.028	2.897	2.971	2.990	2.962	150-160	1.323	390.6	99.7,99.7
170	3.035	3.126	3.168	3.170	2.998	3.147	3.169	3.135	160-170	0.8639	391.5	99.9,99.9
180	3.089	3.216	3.244	3.231	3.095	3.222	3.250	3.245	170-180	0.3024	391.8	100,100
DEG	LUMINOUS INTENSITY:cd									UNIT:lm		

Conical surface Flux(90deg): 195.04 lm

%lum = 49.8%

%lamp = 49.8%

Conical surface Flux(130deg): 312.83 lm

%lum = 79.9%

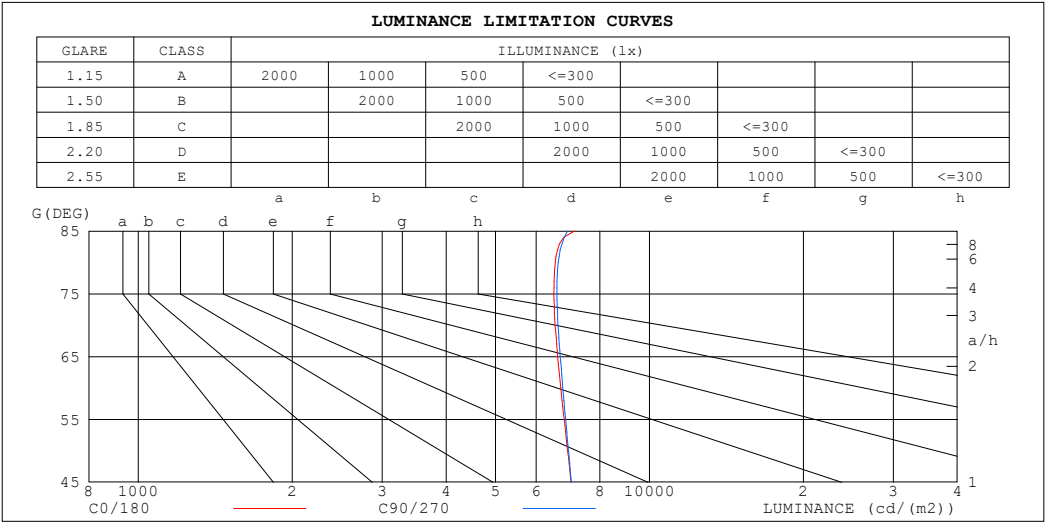
%lamp = 79.9%

C Range: 0 - 360DEG
 C Interval: 22.5DEG
 Test Speed: HIGH
 Temperature:25.3℃
 Operators:Cloud
 Test Date:2024-10-28

γ Range: 0 - 180DEG
 γ Interval: 1.0DEG
 Test System:EVERFINE GO-2000B_V1 SYSTEM V2.00.488
 Humidity:65.0%
 Test Distance:6.360m [K=1.0000]
 Remarks: ALL

LUMINANCE LIMITATION CURVES

Test:U:24.00V I:0.7165A P:17.20W PF:1.000 Freq:0Hz Lamp Flux:391.756x1 lm		
NAME: SF16-24V-5050-72-RGBW(4000)-80	TYPE:	WEIGHT:
SPEC.:	DIM.: Length=1m	SERIAL No.:
MFR.:	SUR.:	Shielding Angle:



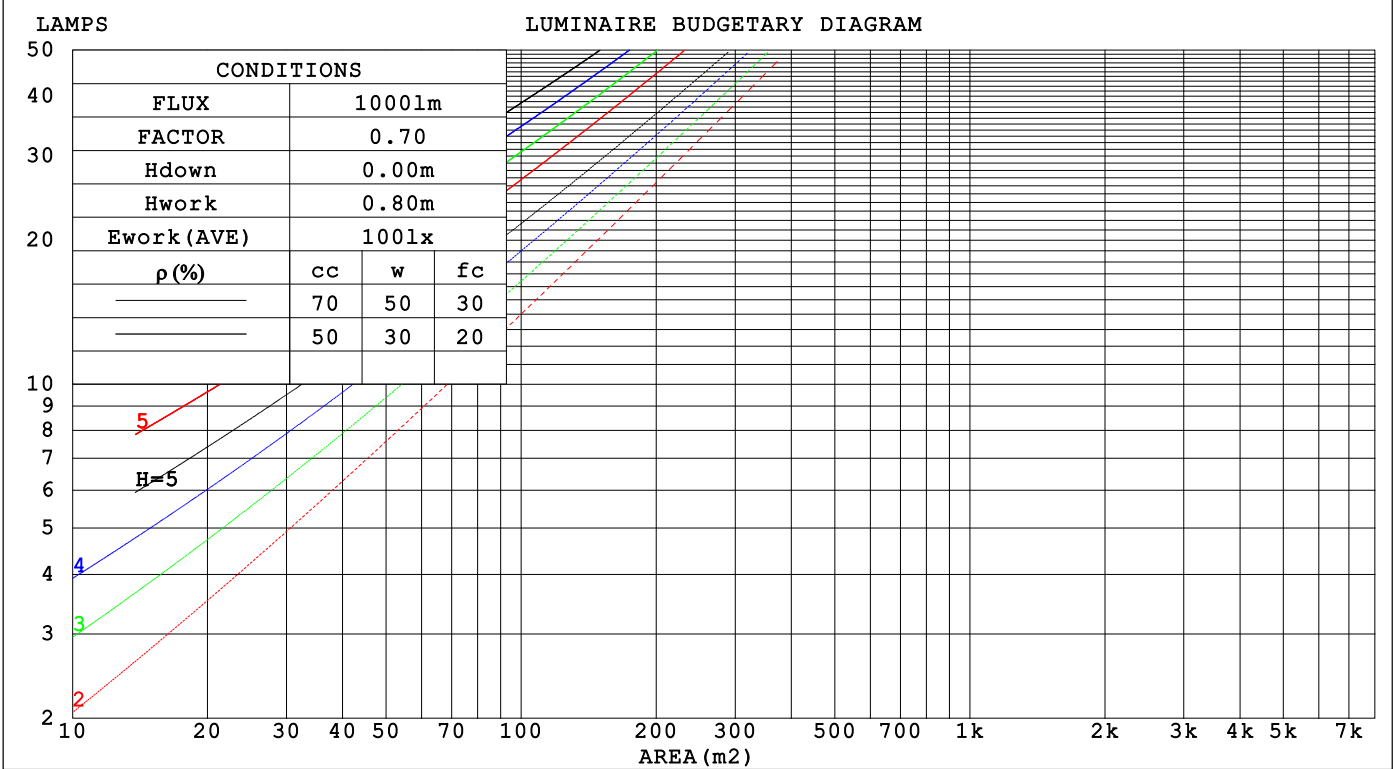
LUMINANCE cd/(m2)		
G (DEG)	C0/180	C90/270
85	7136	6915
80	6544	6630
75	6501	6590
70	6538	6624
65	6615	6691
60	6708	6768
55	6809	6850
50	6917	6942
45	7022	7031

C Range: 0 - 360DEG	γ Range: 0 - 180DEG
C Interval: 22.5DEG	γ Interval: 1.0DEG
Test Speed: HIGH	Test System:EVERFINE GO-2000B_V1 SYSTEM V2.00.488
Temperature:25.3℃	Humidity:65.0%
Operators:Cloud	Test Distance:6.360m [K=1.0000]
Test Date:2024-10-28	Remarks: ALL

CU AND LUMINAIRE BUDGETARY ESTIMATE DIAGRAM

Test:U:24.00V I:0.7165A P:17.20W PF:1.000 Freq:0Hz		
Lamp Flux:391.756x1 lm		
NAME: SF16-24V-5050-72-RGBW(4000)-80	TYPE:	WEIGHT:
SPEC.:	DIM.: Length=1m	SERIAL No.:
MFR.:	SUR.:	Shielding Angle:

pcc	80%			70%			50%			30%			10%			0
p _w	50%	30%	10%	50%	30%	10%	50%	30%	10%	50%	30%	10%	50%	30%	10%	0
p _{fc}	20%			20%			20%			20%			20%			0
RCR	RCR:Room Cavity Ratio Coefficients of Utilization(CU)															
0.0	1.18	1.18	1.18	1.15	1.15	1.15	1.09	1.09	1.09	1.04	1.04	1.04	.99	.99	.99	.96
1.0	1.02	.98	.93	.99	.95	.92	.95	.91	.88	.90	.87	.85	.86	.84	.82	.79
2.0	.89	.81	.76	.86	.80	.74	.82	.77	.72	.78	.74	.70	.75	.71	.68	.65
3.0	.78	.69	.62	.76	.68	.62	.72	.65	.60	.69	.63	.59	.66	.61	.57	.55
4.0	.69	.60	.53	.67	.59	.52	.64	.57	.51	.61	.55	.50	.59	.53	.49	.46
5.0	.61	.52	.45	.60	.51	.45	.57	.50	.44	.55	.48	.43	.53	.47	.42	.40
6.0	.55	.46	.39	.54	.45	.39	.52	.44	.38	.50	.43	.38	.48	.42	.37	.35
7.0	.50	.41	.35	.49	.40	.34	.47	.39	.34	.45	.38	.33	.43	.38	.33	.31
8.0	.45	.37	.31	.45	.36	.31	.43	.36	.30	.41	.35	.30	.40	.34	.29	.28
9.0	.42	.33	.28	.41	.33	.28	.39	.32	.27	.38	.32	.27	.37	.31	.27	.25
10.0	.38	.30	.25	.38	.30	.25	.37	.30	.25	.35	.29	.24	.34	.28	.24	.22



C Range: 0 - 360DEG
C Interval: 22.5DEG
Test Speed: HIGH
Temperature:25.3℃
Operators:Cloud
Test Date:2024-10-28

γ Range: 0 - 180DEG
γ Interval: 1.0DEG
Test System:EVERFINE GO-2000B_V1 SYSTEM V2.00.488
Humidity:65.0%
Test Distance:6.360m [K=1.0000]
Remarks: ALL

WEC AND CCEC

Test:U:24.00V I:0.7165A P:17.20W PF:1.000 Freq:0Hz Lamp Flux:391.756x1 lm					
NAME: SF16-24V-5050-72-RGBW(4000)-80			TYPE:		WEIGHT:
SPEC.:			DIM.: Length=1m		SERIAL No.:
MFR.:			SUR.:		Shielding Angle:

pcc	80%			70%			50%			30%			10%			0														
pw	50%	30%	10%	50%	30%	10%	50%	30%	10%	50%	30%	10%	50%	30%	10%	0														
pfc	20%			20%			20%			20%			20%			0														
RCR	RCR:Room Cavity Ratio															Wall Exitance Coefficients(WEC)														
0.0																														
1.0	.327	.186	.059	.318	.182	.058	.303	.174	.056	.289	.167	.053	.276	.160	.052															
2.0	.301	.165	.051	.294	.162	.050	.280	.156	.048	.268	.150	.047	.256	.145	.046															
3.0	.276	.147	.044	.270	.144	.043	.257	.139	.042	.246	.135	.041	.235	.130	.040															
4.0	.253	.132	.039	.247	.129	.038	.236	.125	.037	.226	.122	.037	.217	.118	.036															
5.0	.233	.119	.034	.228	.117	.034	.218	.114	.033	.209	.110	.033	.201	.107	.032															
6.0	.215	.108	.031	.211	.107	.031	.202	.104	.030	.194	.101	.030	.186	.098	.029															
7.0	.200	.099	.028	.196	.098	.028	.188	.095	.027	.181	.093	.027	.174	.090	.027															
8.0	.187	.091	.026	.183	.090	.025	.176	.088	.025	.169	.086	.025	.163	.084	.024															
9.0	.175	.084	.024	.171	.083	.023	.165	.081	.023	.159	.080	.023	.153	.078	.022															
10.0	.164	.079	.022	.161	.078	.022	.155	.076	.021	.150	.074	.021	.144	.073	.021															

pcc	80%			70%			50%			30%			10%			0
pw	50%	30%	10%	50%	30%	10%	50%	30%	10%	50%	30%	10%	50%	30%	10%	0
pfc	20%			20%			20%			20%			20%			0
RCR	RCR:Room Cavity Ratio						Ceiling Cavity Exitance Coefficients (CCEC)									
0.0	.218	.218	.218	.187	.187	.187	.127	.127	.127	.073	.073	.073	.023	.023	.023	
1.0	.210	.184	.161	.179	.158	.139	.123	.109	.096	.071	.063	.056	.023	.020	.018	
2.0	.202	.160	.125	.173	.138	.108	.119	.095	.076	.068	.056	.044	.022	.018	.014	
3.0	.194	.143	.102	.167	.123	.088	.114	.086	.062	.066	.050	.037	.021	.016	.012	
4.0	.187	.130	.086	.160	.112	.075	.110	.078	.053	.064	.046	.031	.020	.015	.010	
5.0	.179	.120	.076	.154	.103	.066	.106	.072	.046	.061	.042	.028	.020	.014	.009	
6.0	.172	.111	.068	.148	.096	.059	.102	.067	.042	.059	.040	.025	.019	.013	.008	
7.0	.165	.104	.062	.142	.090	.054	.098	.063	.038	.057	.037	.023	.018	.012	.008	
8.0	.158	.099	.058	.136	.086	.050	.094	.060	.036	.055	.035	.021	.018	.012	.007	
9.0	.152	.094	.054	.131	.081	.047	.091	.057	.034	.053	.034	.020	.017	.011	.007	
10.0	.146	.089	.051	.126	.078	.045	.088	.055	.032	.051	.032	.019	.017	.011	.006	

C Range: 0 - 360DEG
C Interval: 22.5DEG
Test Speed: HIGH
Temperature:25.3℃
Operators:Cloud
Test Date:2024-10-28

γ Range: 0 - 180DEG
γ Interval: 1.0DEG
Test System:EVERFINE GO-2000B_V1 SYSTEM V2.00.488
Humidity:65.0%
Test Distance:6.360m [K=1.0000]
Remarks: ALL

UGR(Unified Glare Rating) Table

Test:U:24.00V I:0.7165A P:17.20W PF:1.000 Freq:0Hz Lamp Flux:391.756x1 lm										
NAME: SF16-24V-5050-72-RGBW(4000)-80					TYPE:			WEIGHT:		
SPEC.:					DIM.: Length=1m			SERIAL No.:		
MFR.:					SUR.:			Shielding Angle:		
ceiling/cavity	0.7	0.7	0.5	0.5	0.3	0.7	0.7	0.5	0.5	0.3
walls	0.5	0.3	0.5	0.3	0.3	0.5	0.3	0.5	0.3	0.3
working plane	0.2	0.2	0.2	0.2	0.2	0.2	0.2	0.2	0.2	0.2
Room dimensions	Viewed crosswise					Viewed endwise				
x = 2H y = 2H	22.5	24.0	22.9	24.3	24.6	22.6	24.1	22.9	24.3	24.6
3H	24.2	25.6	24.6	25.9	26.2	24.3	25.6	24.6	25.9	26.3
4H	25.0	26.3	25.3	26.6	26.9	25.0	26.3	25.4	26.6	27.0
6H	25.6	26.8	26.0	27.2	27.5	25.6	26.9	26.0	27.2	27.6
8H	25.8	27.0	26.2	27.4	27.7	25.9	27.1	26.3	27.4	27.8
12H	26.0	27.2	26.4	27.5	27.9	26.1	27.2	26.5	27.6	28.0
4H 2H	23.2	24.5	23.5	24.8	25.1	23.2	24.5	23.6	24.8	25.2
3H	25.1	26.2	25.5	26.6	27.0	25.1	26.2	25.5	26.6	27.0
4H	25.9	27.0	26.4	27.4	27.8	26.0	27.0	26.4	27.4	27.8
6H	26.7	27.7	27.2	28.1	28.5	26.8	27.7	27.2	28.1	28.6
8H	27.0	27.9	27.5	28.3	28.8	27.1	28.0	27.6	28.4	28.9
12H	27.3	28.1	27.8	28.6	29.0	27.3	28.2	27.8	28.6	29.1
8H 4H	26.3	27.2	26.7	27.6	28.1	26.3	27.2	26.8	27.6	28.1
6H	27.2	28.0	27.7	28.4	29.0	27.3	28.0	27.8	28.5	29.0
8H	27.7	28.3	28.2	28.8	29.3	27.7	28.4	28.2	28.9	29.4
12H	28.1	28.6	28.6	29.1	29.7	28.1	28.7	28.6	29.2	29.7
12H 4H	26.3	27.1	26.8	27.6	28.1	26.4	27.2	26.8	27.6	28.1
6H	27.3	28.0	27.9	28.5	29.0	27.4	28.0	27.9	28.5	29.1
8H	27.8	28.4	28.4	28.9	29.5	27.9	28.4	28.4	29.0	29.5
Variations with the observer position at spacings(CIE Pub.117):										
S = 1.0H	+ 0.1 / - 0.2					+ 0.1 / - 0.2				
1.5H	+ 0.2 / - 0.3					+ 0.2 / - 0.3				
2.0H	+ 0.1 / - 0.3					+ 0.1 / - 0.3				

CIE Pub.117, 391.8 lm Total Lamp Luminous Flux Correct (8log(F/F0) = -3.3)
Area: 0.017 m2

C Range: 0 - 360DEG
C Interval: 22.5DEG
Test Speed: HIGH
Temperature:25.3℃
Operators:Cloud
Test Date:2024-10-28

γ Range: 0 - 180DEG
γ Interval: 1.0DEG
Test System:EVERFINE GO-2000B_V1 SYSTEM V2.00.488
Humidity:65.0%
Test Distance:6.360m [K=1.0000]
Remarks: ALL

UTILIZATION FACTORS TABLE

Test:U:24.00V I:0.7165A P:17.20W PF:1.000 Freq:0Hz Lamp Flux:391.756x1 lm		
NAME: SF16-24V-5050-72-RGBW(4000)-80	TYPE:	WEIGHT:
SPEC.:	DIM.: Length=1m	SERIAL No.:
MFR.:	SUR.:	Shielding Angle:

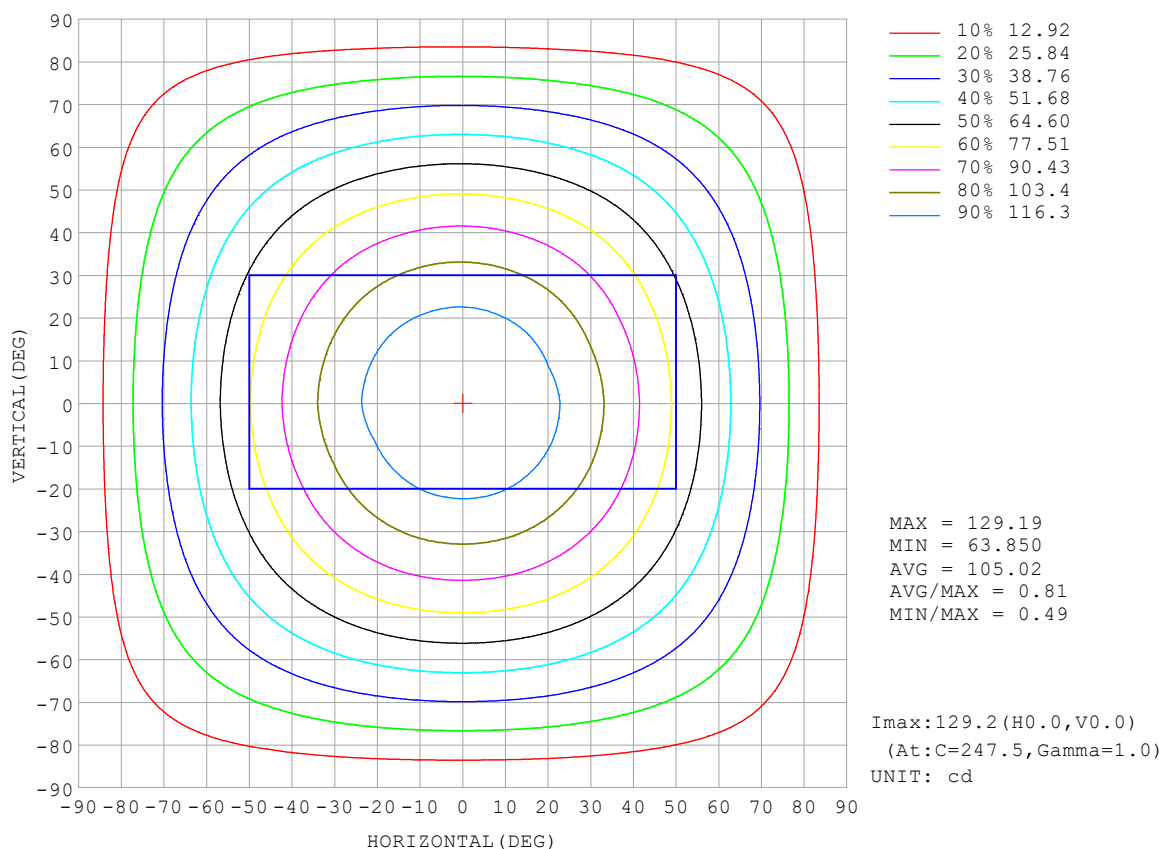
REFLECTANCE										
Ceiling	0.8	0.8	0.8	0.7	0.7	0.7	0.5	0.5	0.5	0
Walls	0.7	0.5	0.3	0.7	0.5	0.3	0.7	0.5	0.3	0
Working plane	0.2	0.2	0.2	0.2	0.2	0.2	0.2	0.2	0.2	0
ROOM INDEX	UTILIZATION FACTORS (PERCENT) $k(RI) \times RCR = 5$									
$k = 0.60$	56	44	37	55	44	37	53	43	36	30
0.80	65	54	46	64	53	46	62	52	45	38
1.00	74	62	55	72	62	54	70	63	54	46
1.25	81	70	62	79	69	62	76	67	61	53
1.50	86	75	68	84	74	67	80	72	66	58
2.00	93	84	77	91	82	76	87	80	74	65
2.50	97	89	82	94	87	81	90	84	79	69
3.00	100	93	87	98	91	86	93	88	83	73
4.00	104	98	93	102	96	92	97	92	88	78
5.00	107	102	97	104	99	95	99	95	92	81
ROOM INDEX	UF(total)									Direct
According to DIN EN 13032-2 2004			Suspended					SHRNOM = 1.25		

C Range: 0 - 360DEG
 C Interval: 22.5DEG
 Test Speed: HIGH
 Temperature: 25.3°C
 Operators: Cloud
 Test Date: 2024-10-28

γ Range: 0 - 180DEG
 γ Interval: 1.0DEG
 Test System: EVERFINE GO-2000B_V1 SYSTEM V2.00.488
 Humidity: 65.0%
 Test Distance: 6.360m [K=1.0000]
 Remarks: ALL

ISOCANDELA DIAGRAM

Test:U:24.00V I:0.7165A P:17.20W PF:1.000 Freq:0Hz Lamp Flux:391.756x1 lm		
NAME: SF16-24V-5050-72-RGBW(4000)-80	TYPE:	WEIGHT:
SPEC.:	DIM.: Length=1m	SERIAL No.:
MFR.:	SUR.:	Shielding Angle:

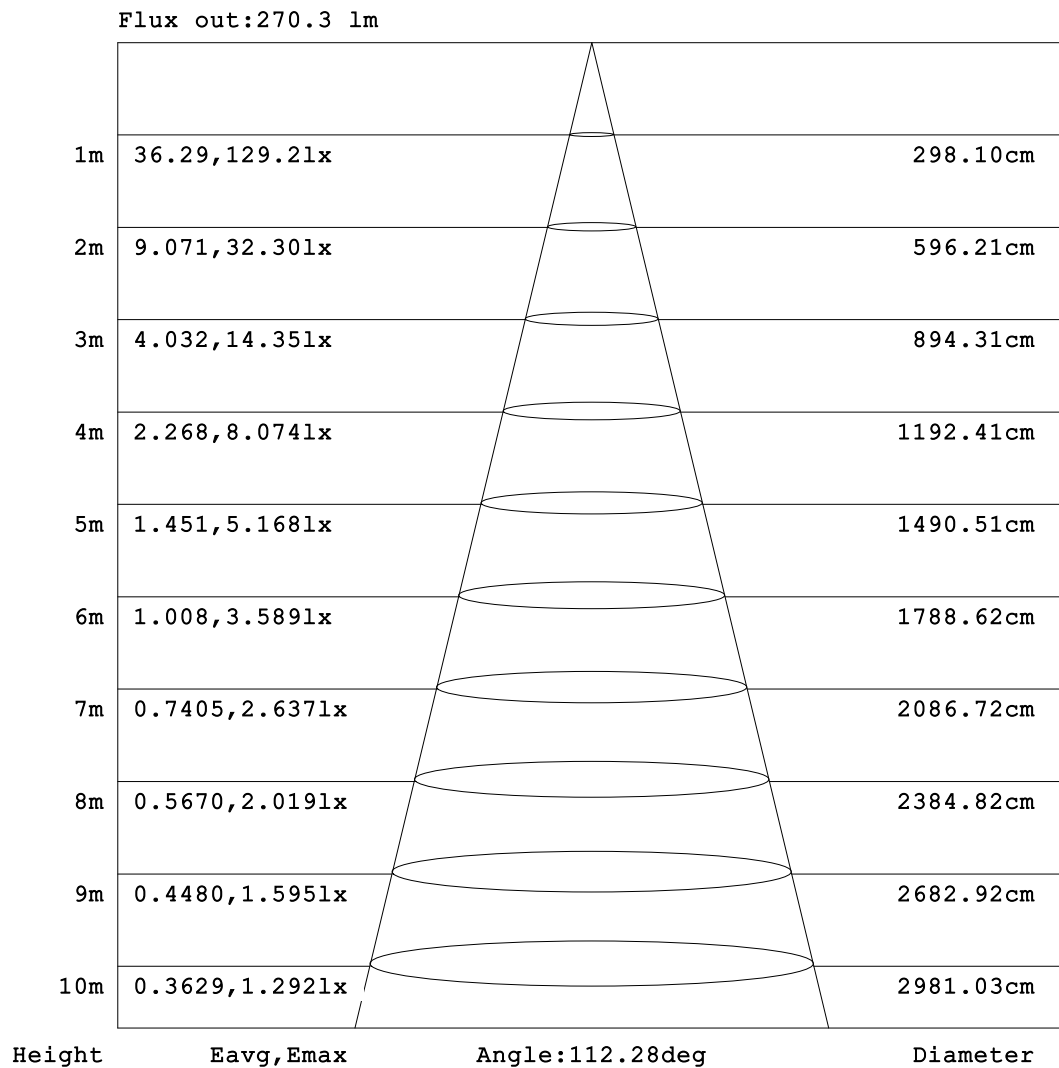


C Range: 0 - 360DEG
C Interval: 22.5DEG
Test Speed: HIGH
Temperature:25.3℃
Operators:Cloud
Test Date:2024-10-28

γ Range: 0 - 180DEG
γ Interval: 1.0DEG
Test System:EVERFINE GO-2000B_V1 SYSTEM V2.00.488
Humidity:65.0%
Test Distance:6.360m [K=1.0000]
Remarks: ALL

AAI Figure

Test:U:24.00V I:0.7165A P:17.20W PF:1.000 Freq:0Hz Lamp Flux:391.756x1 lm		
NAME: SF16-24V-5050-72-RGBW(4000)-80	TYPE:	WEIGHT:
SPEC.:	DIM.: Length=1m	SERIAL No.:
MFR.:	SUR.:	Shielding Angle:



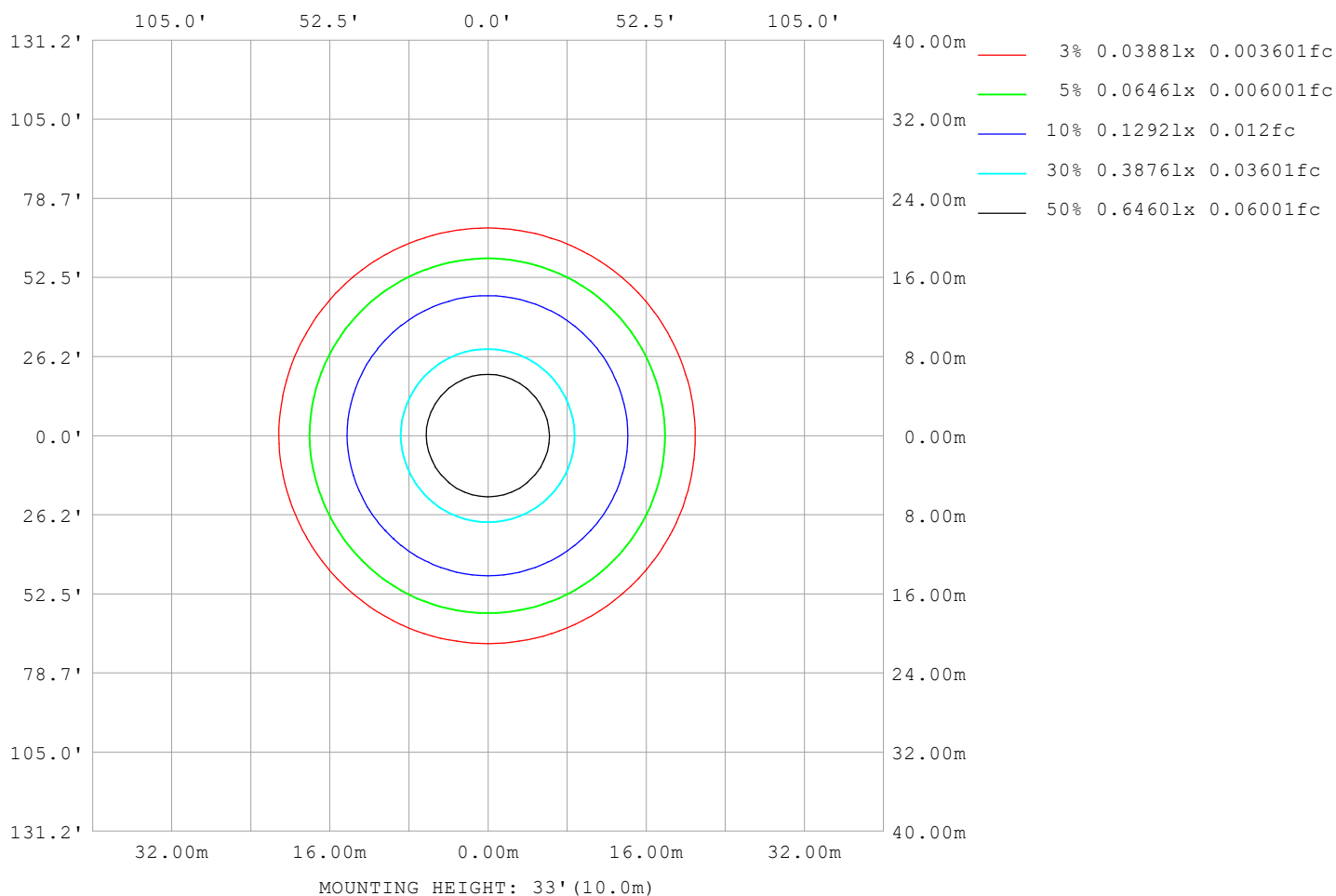
Note:The Curves indicate the illuminated area and the average illumination when the luminaire is at different distance.

C Range: 0 - 360DEG
C Interval: 22.5DEG
Test Speed: HIGH
Temperature:25.3℃
Operators:Cloud
Test Date:2024-10-28

γ Range: 0 - 180DEG
γ Interval: 1.0DEG
Test System:EVERFINE GO-2000B_V1 SYSTEM V2.00.488
Humidity:65.0%
Test Distance:6.360m [K=1.0000]
Remarks: ALL

ISOLUX DIAGRAM

Test:U:24.00V I:0.7165A P:17.20W PF:1.000 Freq:0Hz Lamp Flux:391.756x1 lm		
NAME: SF16-24V-5050-72-RGBW(4000)-80	TYPE:	WEIGHT:
SPEC.:	DIM.: Length=1m	SERIAL No.:
MFR.:	SUR.:	Shielding Angle:



C Range: 0 - 360DEG
C Interval: 22.5DEG
Test Speed: HIGH
Temperature: 25.3°C
Operators: Cloud
Test Date: 2024-10-28

γ Range: 0 - 180DEG
γ Interval: 1.0DEG
Test System: EVERFINE GO-2000B_V1 SYSTEM V2.00.488
Humidity: 65.0%
Test Distance: 6.360m [K=1.0000]
Remarks: ALL

LED Avg.L Report

Test:U:24.00V I:0.7165A P:17.20W PF:1.000 Freq:0Hz Lamp Flux:391.756x1 lm		
NAME: SF16-24V-5050-72-RGBW(4000)-80	TYPE:	WEIGHT:
SPEC.:	DIM.: Length=1m	SERIAL No.:
MFR.:	SUR.:	Shielding Angle:

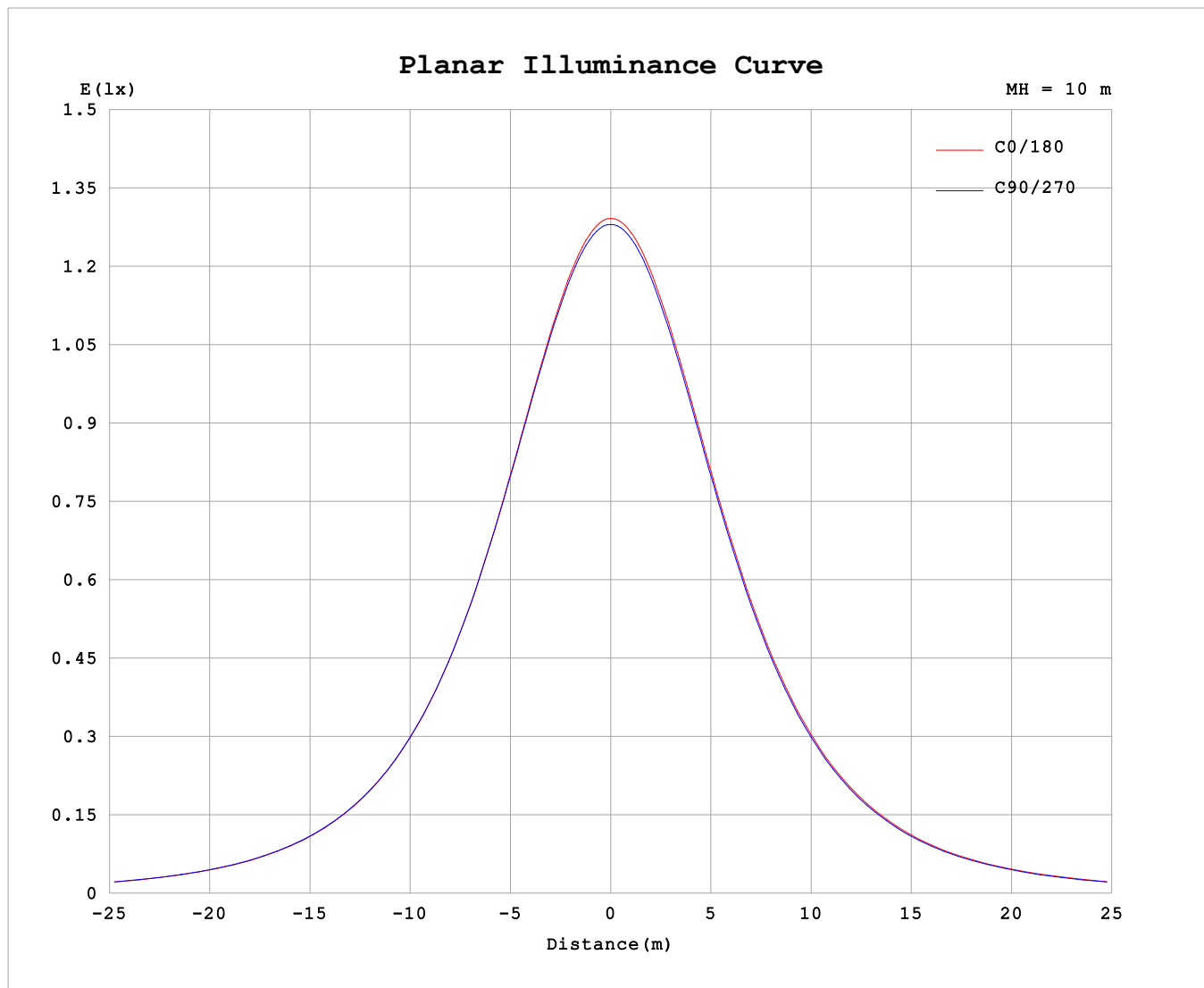
AvgL	cd/m2
L_0~180 (65) av	6675
L_0~180 (75) av	6617
L_0~180 (85) av	7470
L_90~270 (65) av	6684
L_90~270 (75) av	6581
L_90~270 (85) av	6861
L_45 (65) av	6683
L_45 (75) av	6607
L_45 (85) av	7117

Standard: GB/T 29293-2012

C Range: 0 - 360DEG
C Interval: 22.5DEG
Test Speed: HIGH
Temperature:25.3℃
Operators:Cloud
Test Date:2024-10-28

γ Range: 0 - 180DEG
γ Interval: 1.0DEG
Test System:EVERFINE GO-2000B_V1 SYSTEM V2.00.488
Humidity:65.0%
Test Distance:6.360m [K=1.0000]
Remarks: ALL

Planar Illuminance Curve



C Range: 0 - 360DEG
C Interval: 22.5DEG
Test Speed: HIGH
Temperature: 25.3 °C
Operators: Cloud
Test Date: 2024-10-28

γ Range: 0 - 180DEG
 γ Interval: 1.0DEG
Test System: EVERFINE GO-2000B_V1 SYSTEM V2.00.488
Humidity: 65.0%
Test Distance: 6.360m [K=1.0000]
Remarks: ALL

LUMINOUS DISTRIBUTION INTENSITY DATA

Test:U:24.00V I:0.7165A P:17.20W PF:1.000 Freq:0Hz Lamp Flux:391.756x1 lm																	
NAME: SF16-24V-5050-72-RGBW(4000)-80									TYPE:						WEIGHT:		
SPEC.:									DIM.: Length=1m						SERIAL No.:		
MFR.:									SUR.:						Shielding Angle:		

Table--1

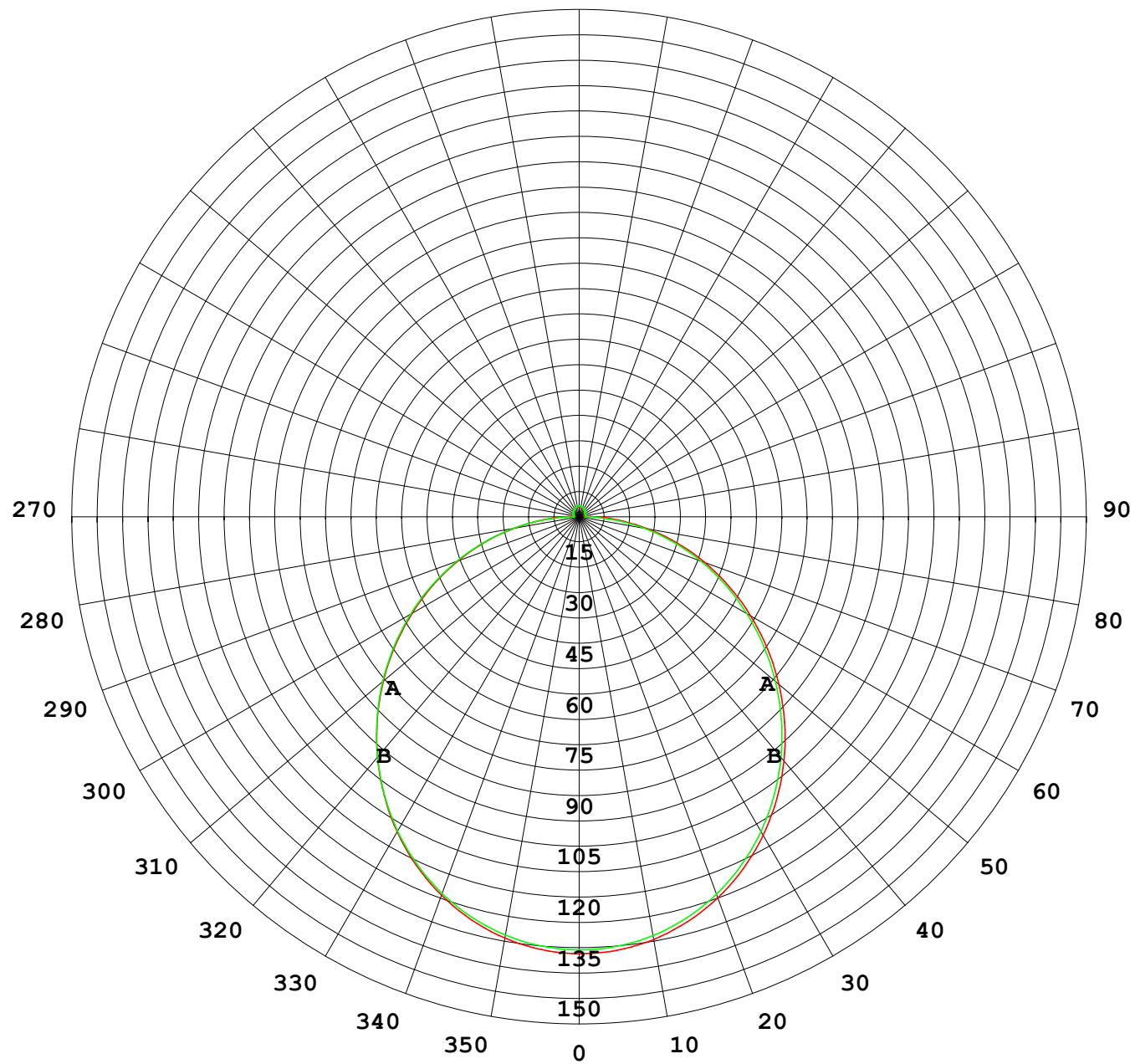
UNIT: cd

C (DEG) γ (DEG)	0	22.5	45	67.5	90	112.5	135	157.5	180	202.5	225	247.5	270	292.5	315	337.5			
0	128	128	128	128	128	128	128	128	128	128	128	128	128	128	128	128			
5	128	128	128	128	128	128	128	128	128	128	128	128	128	128	128	128			
10	126	126	126	126	126	126	126	126	126	126	126	126	126	126	126	126			
15	122	123	123	123	123	123	123	123	123	123	123	123	123	123	123	123			
20	118	118	119	119	119	119	119	119	119	119	119	119	119	119	119	119			
25	113	113	113	114	114	114	114	114	114	114	114	114	114	114	114	113			
30	107	107	107	107	108	108	108	108	108	108	108	108	108	108	107	107			
35	99.9	100	100	101	101	101	101	101	101	101	101	101	101	101	101	100			
40	92.1	92.4	92.6	92.9	92.9	93.2	93.2	93.4	93.6	93.4	93.4	93.1	93.0	92.8	92.8	92.5			
45	83.8	84.1	84.2	84.6	84.7	85.0	85.0	85.2	85.3	85.2	85.1	84.8	84.7	84.5	84.5	84.2			
50	75.0	75.3	75.5	75.9	76.0	76.2	76.2	76.4	76.6	76.4	76.3	76.0	75.9	75.7	75.7	75.4			
55	65.9	66.2	66.4	66.8	66.9	67.1	67.1	67.3	67.5	67.3	67.2	66.8	66.7	66.6	66.6	66.3			
60	56.6	56.9	57.1	57.5	57.6	57.8	57.8	57.9	58.2	58.0	57.9	57.5	57.4	57.2	57.2	57.0			
65	47.2	47.4	47.6	48.0	48.2	48.3	48.3	48.5	48.7	48.5	48.4	48.0	47.9	47.7	47.8	47.5			
70	37.7	38.0	38.2	38.5	38.6	38.7	38.7	39.0	39.2	39.1	38.9	38.5	38.4	38.2	38.3	38.1			
75	28.4	28.6	28.8	29.0	29.0	29.2	29.3	29.6	29.8	29.6	29.4	29.0	28.9	28.7	28.8	28.7			
80	19.2	19.4	19.5	19.6	19.6	19.8	19.9	20.3	20.5	20.3	20.0	19.6	19.4	19.3	19.5	19.4			
85	10.5	10.5	10.3	10.4	10.3	10.5	10.7	11.3	11.6	11.3	10.8	10.2	10.1	10.00	10.4	10.5			
90	4.80	4.65	3.92	2.85	1.71	2.83	4.02	4.99	5.25	4.94	4.16	2.87	1.98	2.89	4.05	4.69			
95	1.72	1.64	1.63	1.63	1.64	1.64	1.65	1.71	1.62	1.73	1.84	1.91	1.98	1.97	1.91	1.75			
100	1.74	1.74	1.71	1.74	1.77	1.76	1.71	1.72	1.57	1.70	1.90	1.95	1.99	2.00	1.98	1.76			
105	1.87	1.86	1.83	1.86	1.88	1.88	1.83	1.84	1.67	1.79	1.97	2.00	1.97	2.05	2.05	1.86			
110	1.99	1.98	1.96	1.99	1.99	2.01	1.95	1.96	1.77	1.88	2.05	2.06	1.96	2.10	2.12	1.94			
115	2.10	2.10	2.08	2.08	2.09	2.13	2.08	2.08	1.87	1.98	2.12	2.11	1.97	2.14	2.19	2.03			
120	2.22	2.22	2.12	2.17	2.19	2.24	2.19	2.20	1.99	2.07	2.20	2.17	2.00	2.17	2.26	2.13			
125	2.33	2.33	2.21	2.27	2.28	2.35	2.30	2.32	2.10	2.17	2.28	2.23	2.11	2.21	2.32	2.22			
130	2.44	2.43	2.30	2.37	2.37	2.45	2.41	2.42	2.22	2.27	2.37	2.30	2.25	2.20	2.32	2.32			
135	2.53	2.52	2.40	2.46	2.45	2.54	2.52	2.54	2.33	2.37	2.46	2.41	2.37	2.43	2.22	2.38			
140	2.63	2.51	2.50	2.55	2.55	2.65	2.62	2.64	2.43	2.47	2.56	2.53	2.52	2.56	2.34	2.41			
145	2.73	2.59	2.60	2.64	2.64	2.76	2.73	2.75	2.55	2.58	2.67	2.64	2.68	2.65	2.45	2.61			
150	2.82	2.69	2.68	2.74	2.82	2.85	2.83	2.84	2.67	2.69	2.78	2.76	2.79	2.75	2.63	2.71			
155	2.91	2.79	2.78	2.92	2.91	2.96	2.93	2.95	2.79	2.80	2.88	2.87	2.89	2.86	2.85	2.81			
160	2.99	2.88	2.97	3.01	3.01	3.05	3.03	3.04	2.90	2.91	2.97	2.96	2.99	2.95	2.96	2.92			
165	3.06	2.97	3.05	3.10	3.10	3.14	3.10	3.12	2.98	3.01	3.06	3.06	3.09	3.05	3.06	3.02			
170	3.03	3.09	3.13	3.18	3.17	3.20	3.17	3.19	3.00	3.09	3.15	3.14	3.17	3.13	3.14	3.10			
175	3.06	3.20	3.18	3.23	3.22	3.25	3.21	3.23	3.06	3.16	3.21	3.20	3.23	3.19	3.20	3.17			
180	3.09	3.20	3.22	3.24	3.24	3.25	3.23	3.23	3.09	3.20	3.22	3.24	3.25	3.24	3.25	3.22			

C Range: 0 - 360DEG
C Interval: 22.5DEG
Test Speed: HIGH
Temperature:25.3℃
Operators:Cloud
Test Date:2024-10-28

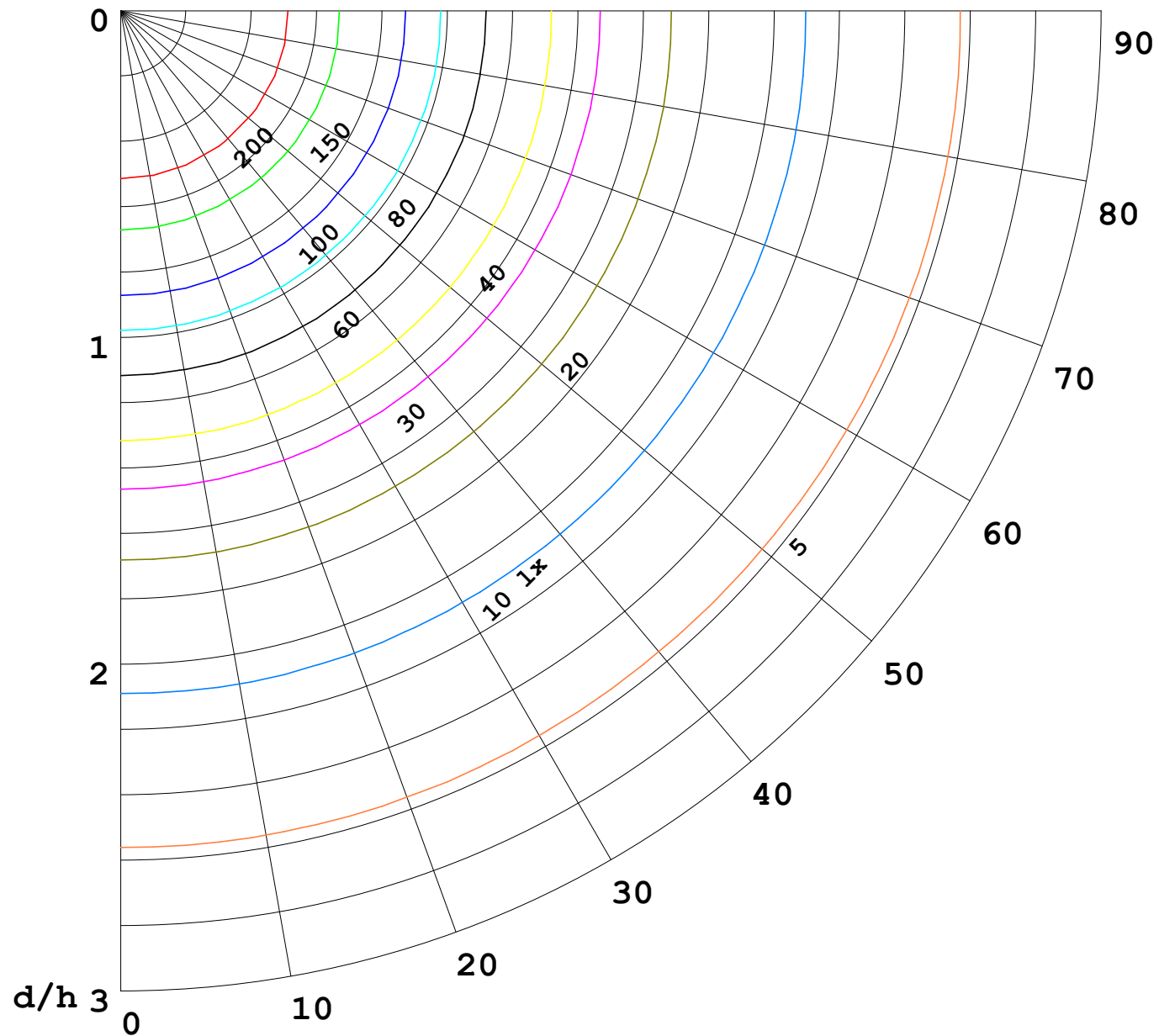
γ Range: 0 - 180DEG
γ Interval: 1.0DEG
Test System:EVERFINE GO-2000B_V1 SYSTEM V2.00.488
Humidity:65.0%
Test Distance:6.360m [K=1.0000]
Remarks: ALL

I (cd)



1000 lm

$\kappa = 1$



F = 1000 lm
 K = 0.7
 Hcc = 0.8 m
 Hfc = 0.0 m
 Eave = 100 lx

	Pcc	Pw	Pfc
—————	70	50	30
—————	50	30	20

