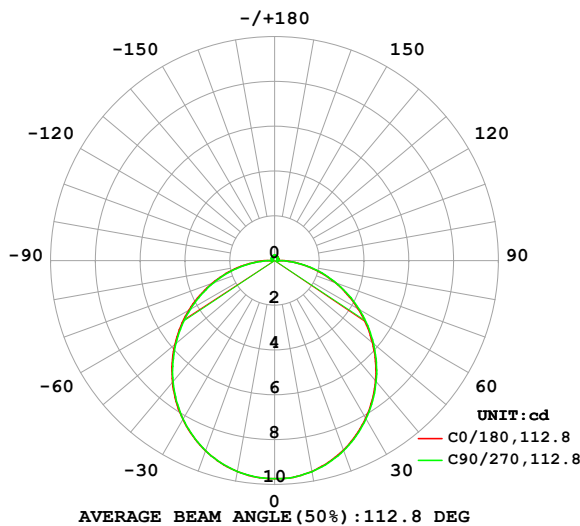


LUMINAIRE PHOTOMETRIC TEST REPORT

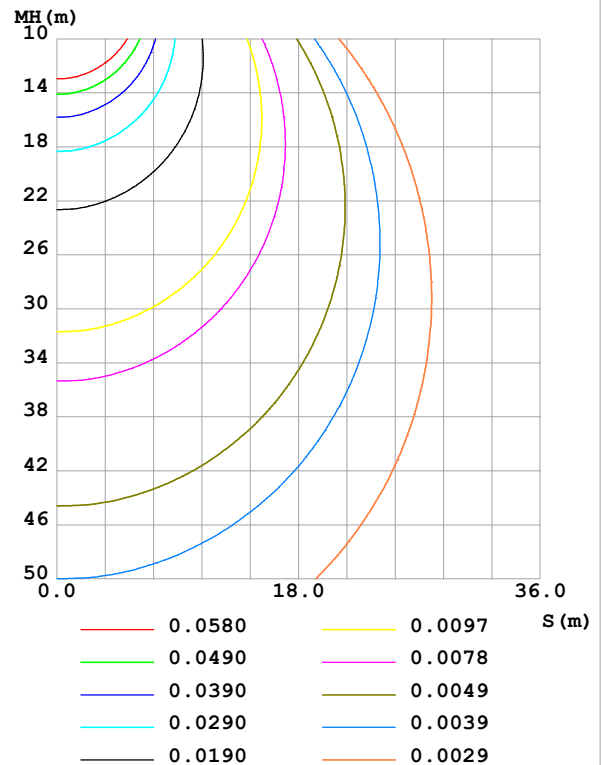
Test:U:24.00V I:0.1766A P:4.238W PF:1.000 Freq:0Hz Lamp Flux:29.738x1 lm		
NAME: SF16-24V-5050-72-RGBW(4000)-80	TYPE:	WEIGHT:
SPEC.:	DIM.: Length=1m	SERIAL No.:
MFR.:	SUR.:	Shielding Angle:

DATA OF LAMP		PHOTOMETRIC DATA				Eff: 7.02 lm/W
MODEL		I _{max} (cd)	9.741	S/MH(C0/180)	1.25	
NOMINAL POWER(W)		LOR(%)	100.0	S/MH(C90/270)	1.25	
RATED VOLTAGE(V)		TOTAL FLUX(lm)	29.738	η UP,DN(C0-180)	1.8,48.1	
NOMINAL FLUX(lm)	29.738	CIE CLASS	DIRECT	η UP,DN(C180-360)	1.8,48.3	
LAMPS INSIDE	1	η up (%)	3.7	CIBSE SHR NOM	1.25	
TEST VOLTAGE(V)		η down (%)	96.3	CIBSE SHR MAX	1.35	

LUMINOUS INTENSITY DISTRIBUTION DIAGRAM



C0 PLANE ISOLUX DIAGRAM (UNIT:lx)



C Range: 0 - 360DEG
C Interval: 22.5DEG
Test Speed: HIGH
Temperature: 25.3 °C
Operators: Cloud
Test Date: 2024-10-28

γ Range: 0 - 180DEG
γ Interval: 1.0DEG
Test System: EVERFINE GO-2000B_V1 SYSTEM V2.00.488
Humidity: 65.0%
Test Distance: 6.360m [K=1.0000]
Remarks: BLUE

ZONAL FLUX DIAGRAM

ZONAL FLUX DIAGRAM:

γ	C0	C45	C90	C135	C180	C225	C270	C315	γ	Φ zone	Φ total	%lum, lamp
10	9.566	9.568	9.574	9.580	9.568	9.562	9.562	9.556	0- 10	0.9218	0.9218	3.1,3.1
20	9.004	9.017	9.026	9.044	9.040	9.045	9.030	9.019	10- 20	2.635	3.557	12,12
30	8.139	8.154	8.169	8.195	8.194	8.193	8.176	8.167	20- 30	3.979	7.536	25.3,25.3
40	7.014	7.035	7.055	7.082	7.097	7.086	7.060	7.050	30- 40	4.782	12.32	41.4,41.4
50	5.713	5.733	5.767	5.789	5.805	5.790	5.755	5.745	40- 50	4.961	17.28	58.1,58.1
60	4.305	4.332	4.375	4.383	4.412	4.387	4.349	4.342	50- 60	4.534	21.81	73.4,73.4
70	2.877	2.903	2.926	2.940	2.972	2.937	2.903	2.902	60- 70	3.606	25.42	85.5,85.5
80	1.467	1.485	1.491	1.514	1.545	1.508	1.462	1.473	70- 80	2.327	27.75	93.3,93.3
90	0.3729	0.3126	0.1482	0.3126	0.3886	0.3053	0.1472	0.2995	80- 90	0.9070	28.65	96.3,96.3
100	0.1385	0.1299	0.1270	0.1299	0.1270	0.1530	0.1472	0.1501	90-100	0.1794	28.83	97,97
110	0.1385	0.1385	0.1386	0.1357	0.1443	0.1617	0.1472	0.1501	100-110	0.1520	28.98	97.5,97.5
120	0.1558	0.1472	0.1501	0.1559	0.1587	0.1761	0.1617	0.1501	110-120	0.1527	29.14	98,98
130	0.1731	0.1588	0.1646	0.1674	0.1760	0.1877	0.1906	0.1703	120-130	0.1503	29.29	98.5,98.5
140	0.1846	0.1790	0.1818	0.1875	0.1961	0.2021	0.2050	0.2021	130-140	0.1415	29.43	99,99
150	0.1990	0.1934	0.1991	0.1992	0.2049	0.2166	0.2194	0.2193	140-150	0.1245	29.55	99.4,99.4
160	0.2135	0.2136	0.2165	0.2136	0.2250	0.2310	0.2367	0.2309	150-160	0.0991	29.65	99.7,99.7
170	0.2250	0.2223	0.2252	0.2251	0.2250	0.2367	0.2367	0.2338	160-170	0.0640	29.72	99.9,99.9
180	0.2279	0.2339	0.2396	0.2338	0.2250	0.2339	0.2367	0.2338	170-180	0.0220	29.74	100,100
DEG	LUMINOUS INTENSITY:cd									UNIT:lm		

Conical surface Flux(90deg): 14.816 lm

%lum = 49.8%

%lamp = 49.8%

Conical surface Flux(130deg): 23.757 lm

%lum = 79.9%

%lamp = 79.9%

C Range: 0 - 360DEG
C Interval: 22.5DEG
Test Speed: HIGH
Temperature:25.3℃
Operators:Cloud
Test Date:2024-10-28

γ Range: 0 - 180DEG
 γ Interval: 1.0DEG
Test System:EVERFINE GO-2000B_V1 SYSTEM V2.00.488
Humidity:65.0%
Test Distance:6.360m [K=1.0000]
Remarks: BLUE

LUMINANCE LIMITATION CURVES

Test:U:24.00V I:0.1766A P:4.238W PF:1.000 Freq:0Hz Lamp Flux:29.738x1 lm		
NAME: SF16-24V-5050-72-RGBW(4000)-80	TYPE:	WEIGHT:
SPEC.:	DIM.: Length=1m	SERIAL No.:
MFR.:	SUR.:	Shielding Angle:



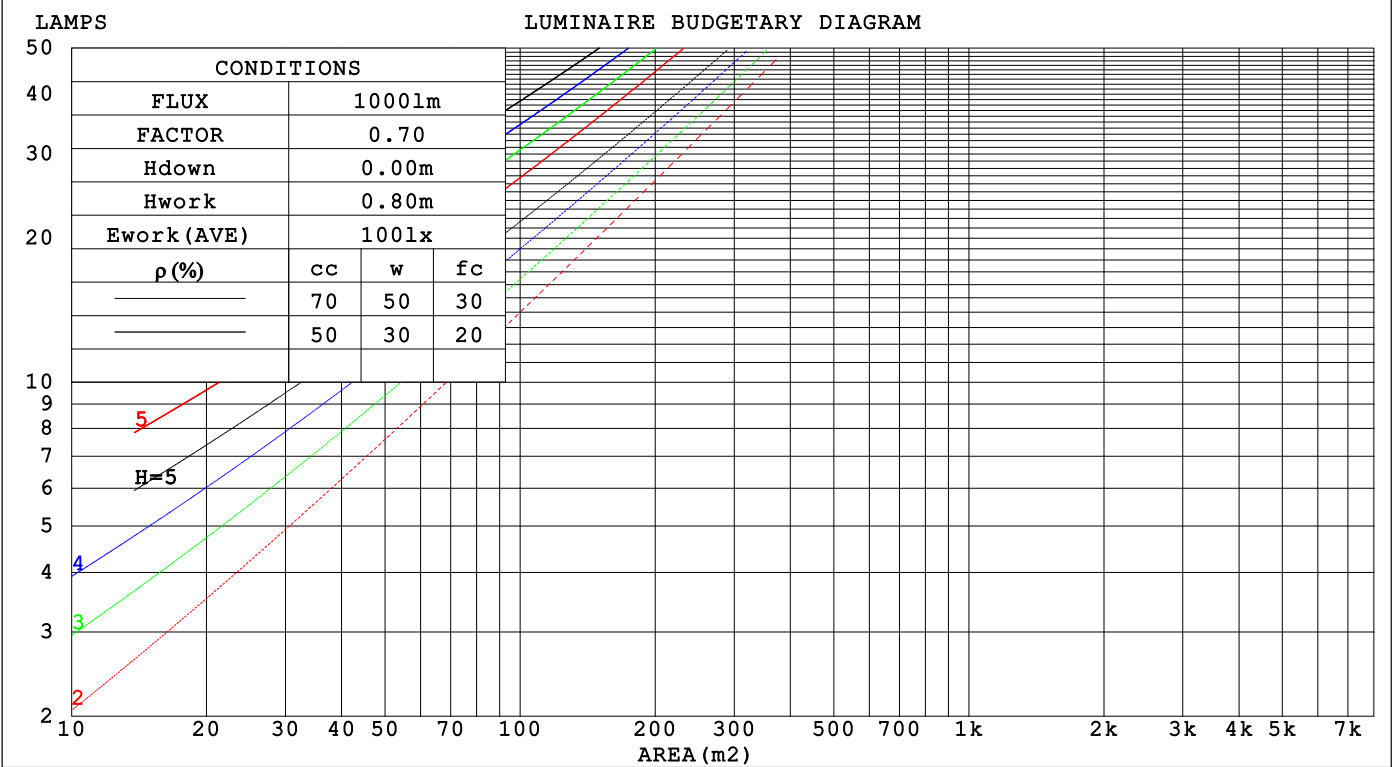
LUMINANCE cd/(m2)		
G (DEG)	C0/180	C90/270
85	544	533
80	497	505
75	492	501
70	495	503
65	500	509
60	507	515
55	515	521
50	523	528
45	531	535

C Range: 0 - 360DEG	γ Range: 0 - 180DEG
C Interval: 22.5DEG	γ Interval: 1.0DEG
Test Speed: HIGH	Test System:EVERFINE GO-2000B_V1 SYSTEM V2.00.488
Temperature:25.3℃	Humidity:65.0%
Operators:Cloud	Test Distance:6.360m [K=1.0000]
Test Date:2024-10-28	Remarks: BLUE

CU AND LUMINAIRE BUDGETARY ESTIMATE DIAGRAM

Test:U:24.00V I:0.1766A P:4.238W PF:1.000 Freq:0Hz		
Lamp Flux:29.738x1 lm		
NAME: SF16-24V-5050-72-RGBW(4000)-80	TYPE:	WEIGHT:
SPEC.:	DIM.: Length=1m	SERIAL No.:
MFR.:	SUR.:	Shielding Angle:

pcc	80%			70%			50%			30%			10%			0
pw	50%	30%	10%	50%	30%	10%	50%	30%	10%	50%	30%	10%	50%	30%	10%	0
pfc	20%			20%			20%			20%			20%			0
RCR	RCR:Room Cavity Ratio			Coefficients of Utilization(CU)												
0.0	1.18	1.18	1.18	1.15	1.15	1.15	1.09	1.09	1.09	1.04	1.04	1.04	.99	.99	.99	.96
1.0	1.02	.98	.93	.99	.95	.92	.95	.91	.88	.90	.87	.85	.86	.84	.82	.79
2.0	.89	.81	.76	.86	.80	.74	.82	.77	.72	.78	.74	.70	.75	.71	.68	.65
3.0	.78	.69	.62	.76	.68	.62	.72	.66	.60	.69	.63	.59	.66	.61	.57	.55
4.0	.69	.60	.53	.67	.59	.52	.64	.57	.51	.61	.55	.50	.59	.53	.49	.47
5.0	.61	.52	.45	.60	.51	.45	.57	.50	.44	.55	.48	.43	.53	.47	.42	.40
6.0	.55	.46	.39	.54	.45	.39	.52	.44	.38	.50	.43	.38	.48	.42	.37	.35
7.0	.50	.41	.35	.49	.40	.34	.47	.39	.34	.45	.38	.33	.44	.38	.33	.31
8.0	.45	.37	.31	.45	.36	.31	.43	.36	.30	.41	.35	.30	.40	.34	.30	.28
9.0	.42	.33	.28	.41	.33	.28	.40	.32	.27	.38	.32	.27	.37	.31	.27	.25
10.0	.38	.30	.25	.38	.30	.25	.37	.30	.25	.35	.29	.24	.34	.28	.24	.22



C Range: 0 - 360DEG
C Interval: 22.5DEG
Test Speed: HIGH
Temperature:25.3℃
Operators:Cloud
Test Date:2024-10-28

γ Range: 0 - 180DEG
γ Interval: 1.0DEG
Test System:EVERFINE GO-2000B_V1 SYSTEM V2.00.488
Humidity:65.0%
Test Distance:6.360m [K=1.0000]
Remarks: BLUE

WEC AND CCEC

Test:U:24.00V I:0.1766A P:4.238W PF:1.000 Freq:0Hz Lamp Flux:29.738x1 lm		
NAME: SF16-24V-5050-72-RGBW(4000)-80	TYPE:	WEIGHT:
SPEC.:	DIM.: Length=1m	SERIAL No.:
MFR.:	SUR.:	Shielding Angle:

pcc	80%			70%			50%			30%			10%			0	
pw	50%	30%	10%	50%	30%	10%	50%	30%	10%	50%	30%	10%	50%	30%	10%	0	
pfc	20%			20%			20%			20%			20%			0	
RCR	RCR:Room Cavity Ratio						Wall Exitance Coefficients(WEC)										
0.0																	
1.0	.327	.186	.059	.318	.182	.058	.303	.174	.056	.289	.167	.053	.276	.160	.052		
2.0	.301	.165	.051	.294	.162	.050	.280	.156	.048	.268	.150	.047	.256	.145	.046		
3.0	.276	.147	.044	.269	.144	.043	.257	.139	.042	.246	.135	.041	.235	.130	.040		
4.0	.253	.132	.039	.247	.129	.038	.236	.125	.037	.226	.122	.037	.217	.118	.036		
5.0	.233	.119	.034	.228	.117	.034	.218	.114	.033	.209	.110	.033	.201	.107	.032		
6.0	.215	.108	.031	.211	.106	.031	.202	.104	.030	.194	.101	.030	.186	.098	.029		
7.0	.200	.099	.028	.196	.098	.028	.188	.095	.027	.181	.093	.027	.174	.090	.027		
8.0	.187	.091	.026	.183	.090	.025	.176	.088	.025	.169	.086	.025	.163	.084	.024		
9.0	.175	.084	.024	.171	.083	.023	.165	.081	.023	.159	.080	.023	.153	.078	.022		
10.0	.164	.079	.022	.161	.078	.022	.155	.076	.021	.150	.074	.021	.144	.073	.021		

pcc	80%			70%			50%			30%			10%			0
pw	50%	30%	10%	50%	30%	10%	50%	30%	10%	50%	30%	10%	50%	30%	10%	0
pfc	20%			20%			20%			20%			20%			0
RCR	RCR:Room Cavity Ratio						Ceiling Cavity Exitance Coefficients (CCEC)									
0.0	.218	.218	.218	.187	.187	.187	.127	.127	.127	.073	.073	.073	.023	.023	.023	
1.0	.210	.184	.161	.179	.158	.139	.123	.109	.096	.071	.063	.056	.023	.020	.018	
2.0	.202	.160	.125	.173	.138	.108	.118	.095	.075	.068	.055	.044	.022	.018	.014	
3.0	.194	.143	.102	.166	.123	.088	.114	.086	.062	.066	.050	.037	.021	.016	.012	
4.0	.186	.130	.086	.160	.112	.075	.110	.078	.053	.064	.046	.031	.020	.015	.010	
5.0	.179	.119	.075	.154	.103	.066	.106	.072	.046	.061	.042	.027	.020	.014	.009	
6.0	.172	.111	.068	.147	.096	.059	.102	.067	.042	.059	.040	.025	.019	.013	.008	
7.0	.165	.104	.062	.142	.090	.054	.098	.063	.038	.057	.037	.023	.018	.012	.008	
8.0	.158	.098	.057	.136	.085	.050	.094	.060	.036	.055	.035	.021	.018	.012	.007	
9.0	.152	.094	.054	.131	.081	.047	.091	.057	.033	.053	.034	.020	.017	.011	.007	
10.0	.146	.089	.051	.126	.077	.045	.087	.055	.032	.051	.032	.019	.017	.011	.006	

C Range: 0 - 360DEG
C Interval: 22.5DEG
Test Speed: HIGH
Temperature:25.3℃
Operators:Cloud
Test Date:2024-10-28

γ Range: 0 - 180DEG
γ Interval: 1.0DEG
Test System:EVERFINE GO-2000B_V1 SYSTEM V2.00.488
Humidity:65.0%
Test Distance:6.360m [K=1.0000]
Remarks: BLUE

UGR(Unified Glare Rating) Table

Test:U:24.00V I:0.1766A P:4.238W PF:1.000 Freq:0Hz Lamp Flux:29.738x1 lm											
NAME: SF16-24V-5050-72-RGBW(4000)-80					TYPE:			WEIGHT:			
SPEC.:					DIM.: Length=1m			SERIAL No.:			
MFR.:					SUR.:			Shielding Angle:			
ceiling/cavity	0.7	0.7	0.5	0.5	0.3	0.7	0.7	0.5	0.5	0.3	
walls	0.5	0.3	0.5	0.3	0.3	0.5	0.3	0.5	0.3	0.3	
working plane	0.2	0.2	0.2	0.2	0.2	0.2	0.2	0.2	0.2	0.2	
Room dimensions		Viewed crosswise				Viewed endwise					
x = 2H y = 2H	22.5	24.0	22.8	24.3	24.5	22.6	24.0	22.9	24.3	24.6	
	3H	24.2	25.6	24.5	25.9	26.2	24.3	25.6	24.6	25.9	26.2
	4H	24.9	26.2	25.3	26.6	26.9	25.0	26.3	25.4	26.6	27.0
	6H	25.6	26.8	25.9	27.1	27.5	25.6	26.9	26.0	27.2	27.6
	8H	25.8	27.0	26.2	27.3	27.7	25.9	27.1	26.3	27.4	27.8
	12H	26.0	27.1	26.4	27.5	27.9	26.1	27.2	26.5	27.6	28.0
4H	2H	23.2	24.5	23.5	24.8	25.1	23.2	24.5	23.6	24.8	25.2
	3H	25.0	26.2	25.4	26.5	26.9	25.1	26.2	25.5	26.6	27.0
	4H	25.9	27.0	26.3	27.4	27.8	26.0	27.0	26.4	27.4	27.8
	6H	26.7	27.6	27.1	28.0	28.5	26.8	27.7	27.2	28.1	28.6
	8H	27.0	27.9	27.5	28.3	28.8	27.1	27.9	27.5	28.4	28.8
	12H	27.3	28.1	27.8	28.5	29.0	27.3	28.1	27.8	28.6	29.1
8H	4H	26.3	27.1	26.7	27.6	28.0	26.3	27.2	26.8	27.6	28.1
	6H	27.2	27.9	27.7	28.4	28.9	27.3	28.0	27.8	28.5	29.0
	8H	27.6	28.3	28.2	28.8	29.3	27.7	28.4	28.2	28.8	29.4
	12H	28.0	28.6	28.6	29.1	29.7	28.1	28.6	28.6	29.2	29.7
12H	4H	26.3	27.1	26.8	27.5	28.0	26.3	27.1	26.8	27.6	28.1
	6H	27.3	28.0	27.8	28.5	29.0	27.4	28.0	27.9	28.5	29.0
	8H	27.8	28.4	28.3	28.9	29.4	27.9	28.4	28.4	28.9	29.5
Variations with the observer position at spacings(CIE Pub.117):											
S = 1.0H		+ 0.1 / - 0.2				+ 0.1 / - 0.2					
1.5H		+ 0.2 / - 0.3				+ 0.2 / - 0.3					
2.0H		+ 0.1 / - 0.3				+ 0.1 / - 0.3					

CIE Pub.117, 29.74 lm Total Lamp Luminous Flux Correct (8log(F/F0) = -12.2)
Area: 0.017 m2

C Range: 0 - 360DEG
C Interval: 22.5DEG
Test Speed: HIGH
Temperature:25.3℃
Operators:Cloud
Test Date:2024-10-28

γ Range: 0 - 180DEG
γ Interval: 1.0DEG
Test System:EVERFINE GO-2000B_V1 SYSTEM V2.00.488
Humidity:65.0%
Test Distance:6.360m [K=1.0000]
Remarks: BLUE

UTILIZATION FACTORS TABLE

Test:U:24.00V I:0.1766A P:4.238W PF:1.000 Freq:0Hz Lamp Flux:29.738x1 lm		
NAME: SF16-24V-5050-72-RGBW(4000)-80	TYPE:	WEIGHT:
SPEC.:	DIM.: Length=1m	SERIAL No.:
MFR.:	SUR.:	Shielding Angle:

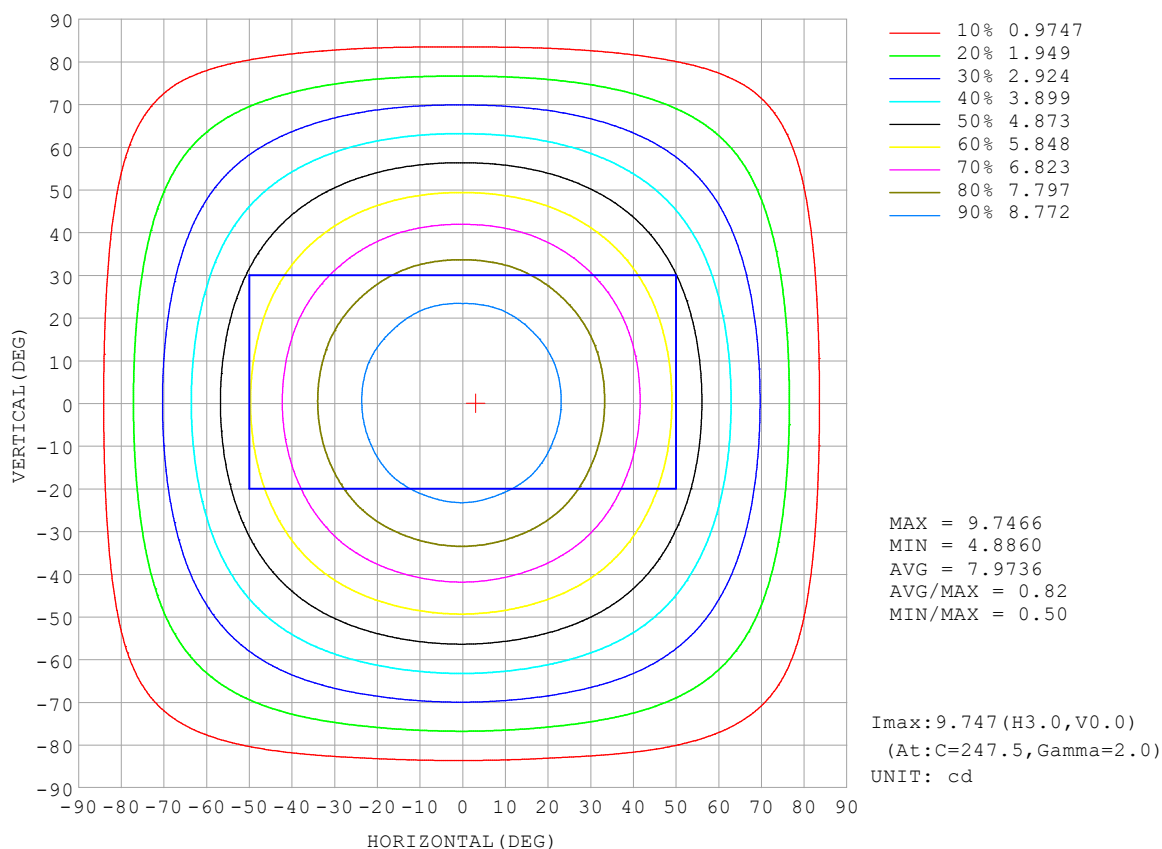
REFLECTANCE										
Ceiling	0.8	0.8	0.8	0.7	0.7	0.7	0.5	0.5	0.5	0
Walls	0.7	0.5	0.3	0.7	0.5	0.3	0.7	0.5	0.3	0
Working plane	0.2	0.2	0.2	0.2	0.2	0.2	0.2	0.2	0.2	0
ROOM INDEX	UTILIZATION FACTORS (PERCENT) $k(RI) \times RCR = 5$									
$k = 0.60$	56	44	37	55	44	37	53	43	37	30
0.80	66	54	46	64	53	46	62	52	45	38
1.00	74	62	55	72	62	54	70	63	54	46
1.25	81	70	62	79	69	62	76	67	61	53
1.50	86	75	68	84	74	68	80	72	66	58
2.00	93	84	77	91	82	76	87	80	74	65
2.50	97	89	82	94	87	81	90	84	79	69
3.00	100	93	87	98	91	86	93	88	83	73
4.00	104	98	93	102	96	92	97	92	88	78
5.00	107	102	97	104	99	95	99	95	92	81
ROOM INDEX	UF (total)									Direct
According to DIN EN 13032-2 2004			Suspended					SHRNOM = 1.25		

C Range: 0 - 360DEG
 C Interval: 22.5DEG
 Test Speed: HIGH
 Temperature: 25.3°C
 Operators: Cloud
 Test Date: 2024-10-28

γ Range: 0 - 180DEG
 γ Interval: 1.0DEG
 Test System: EVERFINE GO-2000B_V1 SYSTEM V2.00.488
 Humidity: 65.0%
 Test Distance: 6.360m [K=1.0000]
 Remarks: BLUE

ISOCANDELA DIAGRAM

Test:U:24.00V I:0.1766A P:4.238W PF:1.000 Freq:0Hz Lamp Flux:29.738x1 lm		
NAME: SF16-24V-5050-72-RGBW(4000)-80	TYPE:	WEIGHT:
SPEC.:	DIM.: Length=1m	SERIAL No.:
MFR.:	SUR.:	Shielding Angle:

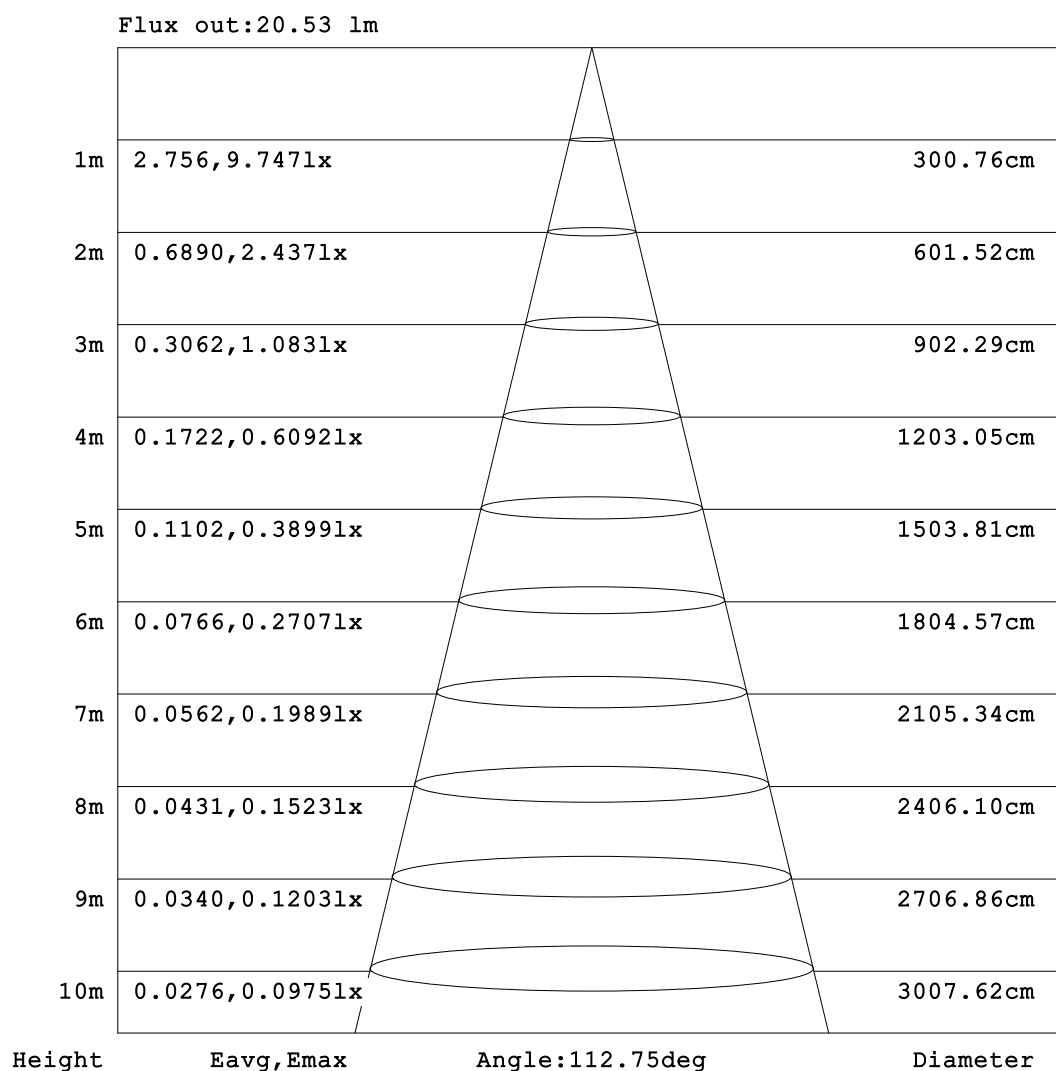


C Range: 0 - 360DEG
C Interval: 22.5DEG
Test Speed: HIGH
Temperature: 25.3°C
Operators: Cloud
Test Date: 2024-10-28

γ Range: 0 - 180DEG
γ Interval: 1.0DEG
Test System: EVERFINE GO-2000B_V1 SYSTEM V2.00.488
Humidity: 65.0%
Test Distance: 6.360m [K=1.0000]
Remarks: BLUE

AAI Figure

Test:U:24.00V I:0.1766A P:4.238W PF:1.000 Freq:0Hz Lamp Flux:29.738x1 lm		
NAME: SF16-24V-5050-72-RGBW(4000)-80	TYPE:	WEIGHT:
SPEC.:	DIM.: Length=1m	SERIAL No.:
MFR.:	SUR.:	Shielding Angle:



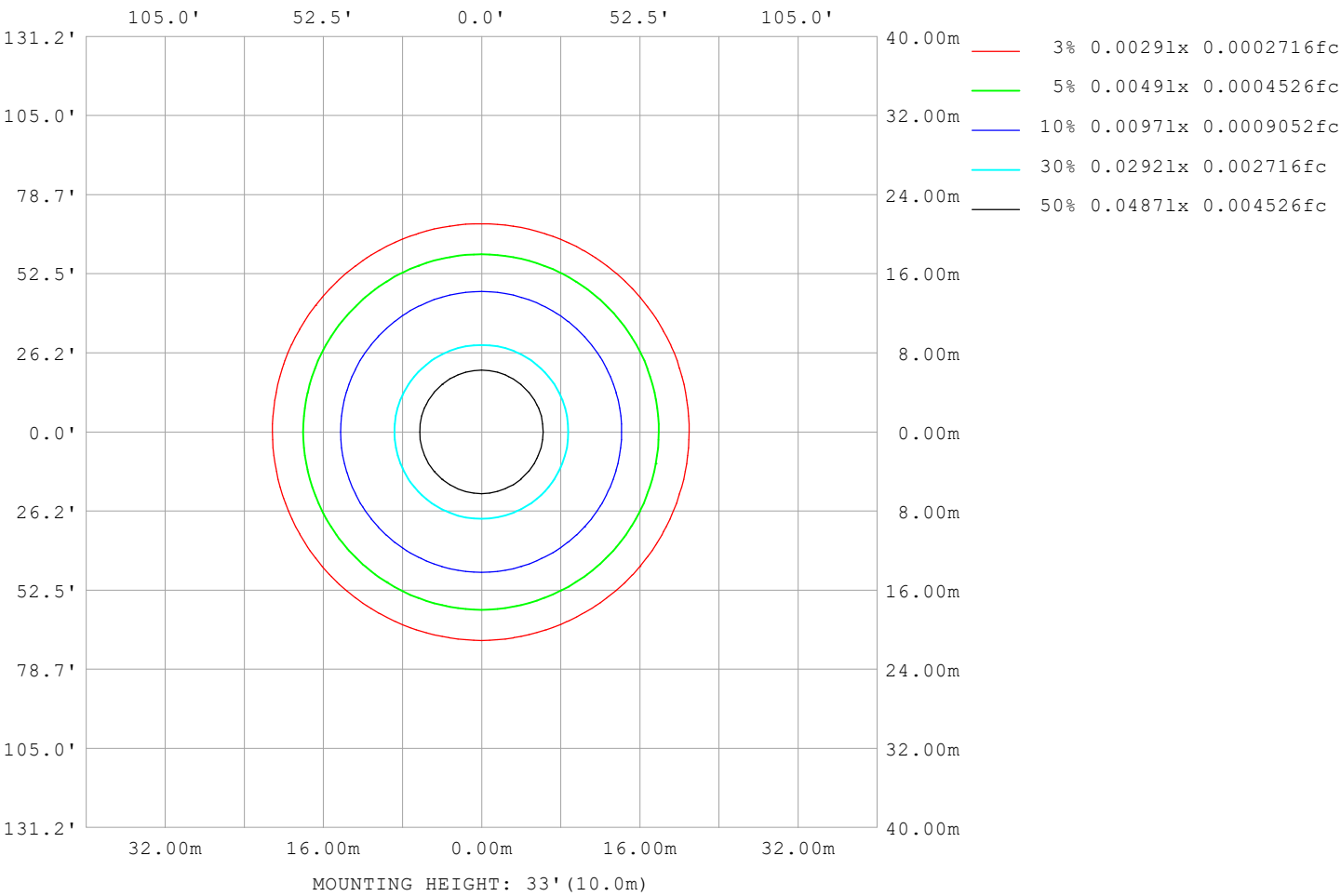
Note:The Curves indicate the illuminated area and the average illumination when the luminaire is at different distance.

C Range: 0 - 360DEG
C Interval: 22.5DEG
Test Speed: HIGH
Temperature:25.3℃
Operators:Cloud
Test Date:2024-10-28

γ Range: 0 - 180DEG
γ Interval: 1.0DEG
Test System:EVERFINE GO-2000B_V1 SYSTEM V2.00.488
Humidity:65.0%
Test Distance:6.360m [K=1.0000]
Remarks: BLUE

ISOLUX DIAGRAM

Test:U:24.00V I:0.1766A P:4.238W PF:1.000 Freq:0Hz Lamp Flux:29.738x1 lm		
NAME: SF16-24V-5050-72-RGBW(4000)-80	TYPE:	WEIGHT:
SPEC.:	DIM.: Length=1m	SERIAL No.:
MFR.:	SUR.:	Shielding Angle:



C Range: 0 - 360DEG	γ Range: 0 - 180DEG
C Interval: 22.5DEG	γ Interval: 1.0DEG
Test Speed: HIGH	Test System:EVERFINE GO-2000B_V1 SYSTEM V2.00.488
Temperature:25.3℃	Humidity:65.0%
Operators:Cloud	Test Distance:6.360m [K=1.0000]
Test Date:2024-10-28	Remarks: BLUE

LED Avg.L Report

Test:U:24.00V I:0.1766A P:4.238W PF:1.000 Freq:0Hz Lamp Flux:29.738x1 lm		
NAME: SF16-24V-5050-72-RGBW(4000)-80	TYPE:	WEIGHT:
SPEC.:	DIM.: Length=1m	SERIAL No.:
MFR.:	SUR.:	Shielding Angle:

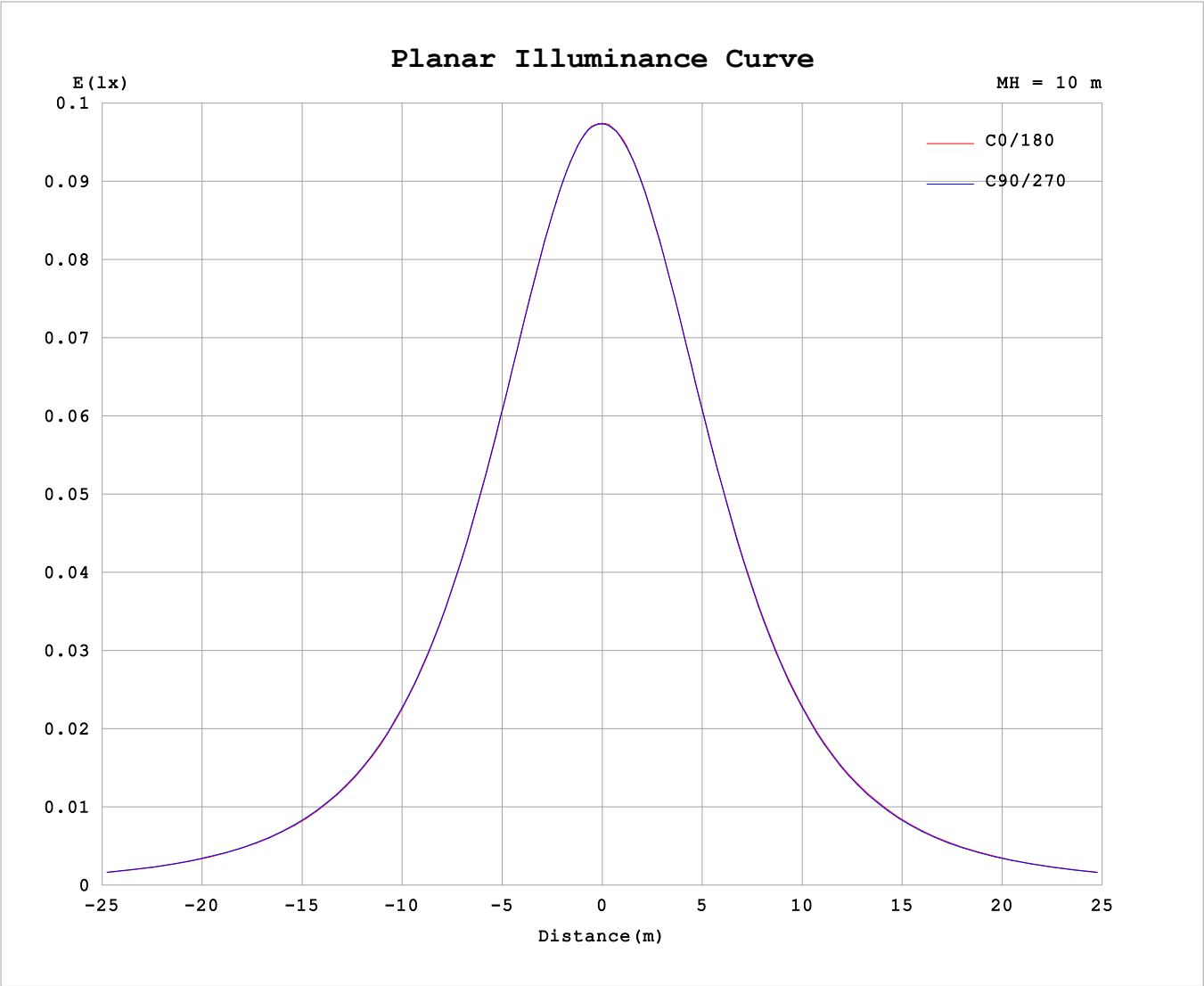
AvgL	cd/m2
L_0~180 (65) av	507
L_0~180 (75) av	502
L_0~180 (85) av	567
L_90~270 (65) av	507
L_90~270 (75) av	498
L_90~270 (85) av	523
L_45 (65) av	507
L_45 (75) av	501
L_45 (85) av	541

Standard: GB/T 29293-2012

C Range: 0 - 360DEG
C Interval: 22.5DEG
Test Speed: HIGH
Temperature:25.3℃
Operators:Cloud
Test Date:2024-10-28

γ Range: 0 - 180DEG
γ Interval: 1.0DEG
Test System:EVERFINE GO-2000B_V1 SYSTEM V2.00.488
Humidity:65.0%
Test Distance:6.360m [K=1.0000]
Remarks: BLUE

Planar Illuminance Curve



C Range: 0 - 360DEG	γ Range: 0 - 180DEG
C Interval: 22.5DEG	γ Interval: 1.0DEG
Test Speed: HIGH	Test System:EVERFINE GO-2000B_V1 SYSTEM V2.00.488
Temperature:25.3℃	Humidity:65.0%
Operators:Cloud	Test Distance:6.360m [K=1.0000]
Test Date:2024-10-28	Remarks: BLUE

LUMINOUS DISTRIBUTION INTENSITY DATA

Test:U:24.00V I:0.1766A P:4.238W PF:1.000 Freq:0Hz Lamp Flux:29.738x1 lm																	
NAME: SF16-24V-5050-72-RGBW(4000)-80									TYPE:						WEIGHT:		
SPEC.:									DIM.: Length=1m						SERIAL No.:		
MFR.:									SUR.:						Shielding Angle:		

Table--1

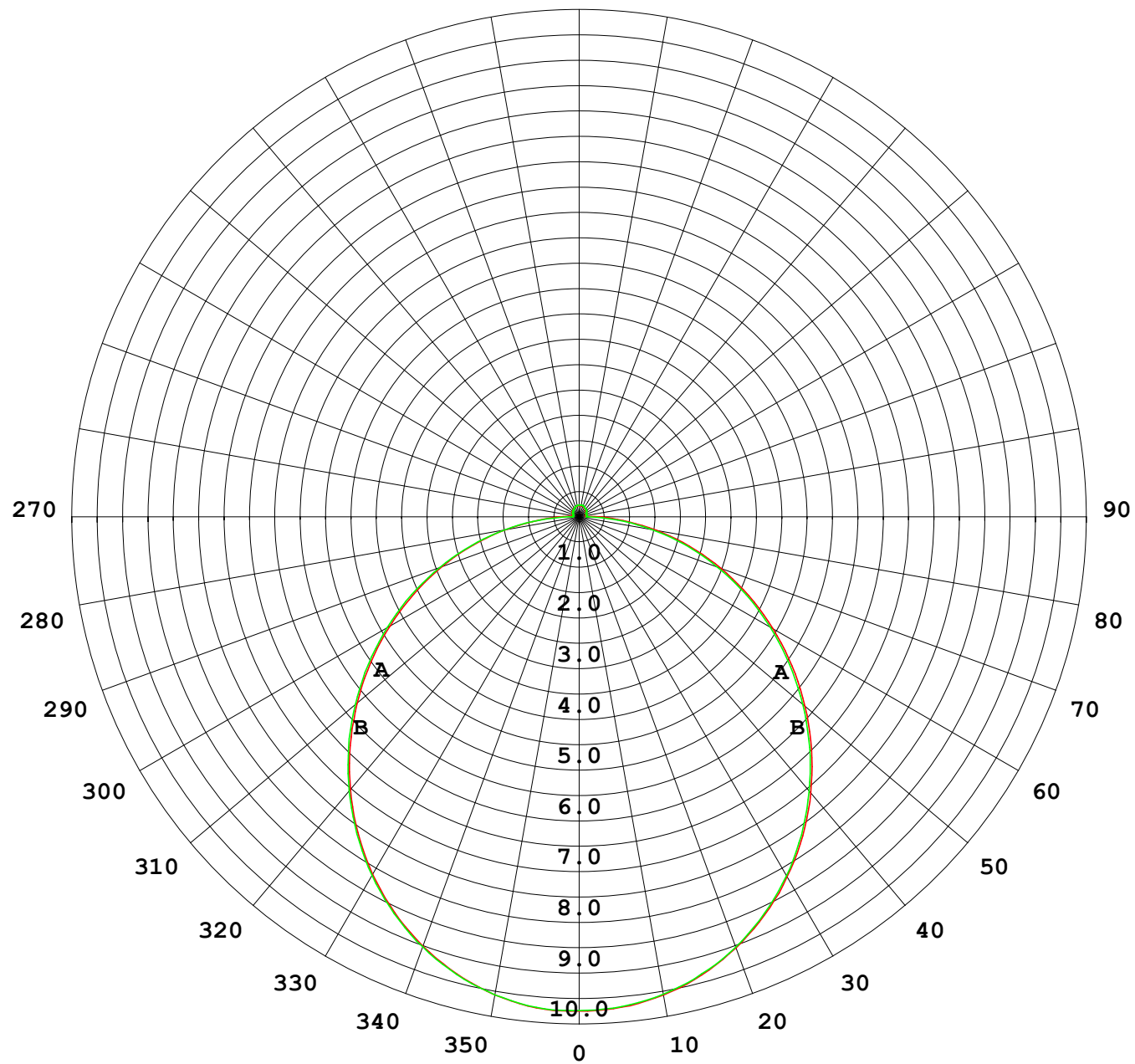
UNIT: cd

C (DEG) γ (DEG)	0	22.5	45	67.5	90	112.5	135	157.5	180	202.5	225	247.5	270	292.5	315	337.5			
0	9.74	9.74	9.74	9.74	9.74	9.74	9.74	9.74	9.74	9.74	9.74	9.74	9.74	9.74	9.74	9.74			
5	9.71	9.69	9.71	9.69	9.71	9.69	9.72	9.68	9.70	9.72	9.70	9.72	9.69	9.72	9.69	9.72			
10	9.57	9.54	9.57	9.54	9.57	9.55	9.58	9.55	9.57	9.59	9.56	9.59	9.56	9.59	9.56	9.57			
15	9.32	9.30	9.33	9.32	9.34	9.32	9.35	9.33	9.35	9.37	9.35	9.37	9.33	9.36	9.33	9.34			
20	9.00	8.99	9.02	9.01	9.03	9.01	9.04	9.03	9.04	9.06	9.04	9.06	9.03	9.05	9.02	9.02			
25	8.60	8.59	8.62	8.61	8.64	8.62	8.66	8.64	8.65	8.68	8.65	8.67	8.64	8.66	8.63	8.63			
30	8.14	8.12	8.15	8.14	8.17	8.16	8.20	8.18	8.19	8.22	8.19	8.21	8.18	8.19	8.17	8.16			
35	7.60	7.59	7.62	7.61	7.64	7.64	7.67	7.66	7.68	7.69	7.67	7.67	7.65	7.65	7.63	7.63			
40	7.01	7.00	7.03	7.03	7.05	7.06	7.08	7.08	7.10	7.11	7.09	7.09	7.06	7.07	7.05	7.04			
45	6.38	6.37	6.40	6.41	6.43	6.43	6.45	6.45	6.47	6.49	6.46	6.45	6.43	6.44	6.41	6.41			
50	5.71	5.71	5.73	5.73	5.77	5.76	5.79	5.78	5.81	5.82	5.79	5.79	5.76	5.76	5.74	5.74			
55	5.02	5.01	5.05	5.06	5.08	5.07	5.09	5.09	5.12	5.13	5.10	5.09	5.06	5.07	5.05	5.04			
60	4.31	4.31	4.33	4.34	4.38	4.37	4.38	4.38	4.41	4.41	4.39	4.38	4.35	4.35	4.34	4.34			
65	3.59	3.59	3.62	3.63	3.66	3.65	3.66	3.66	3.69	3.69	3.67	3.65	3.63	3.64	3.62	3.63			
70	2.88	2.88	2.90	2.90	2.93	2.92	2.94	2.94	2.97	2.97	2.94	2.94	2.90	2.91	2.90	2.91			
75	2.17	2.17	2.19	2.19	2.20	2.20	2.22	2.23	2.25	2.26	2.22	2.21	2.18	2.19	2.19	2.20			
80	1.47	1.46	1.49	1.48	1.49	1.50	1.51	1.52	1.54	1.54	1.51	1.49	1.46	1.48	1.47	1.49			
85	0.81	0.79	0.80	0.78	0.79	0.78	0.82	0.84	0.87	0.87	0.81	0.78	0.76	0.77	0.78	0.81			
90	0.37	0.34	0.31	0.20	0.15	0.20	0.31	0.36	0.39	0.39	0.31	0.23	0.15	0.24	0.30	0.37			
95	0.15	0.14	0.13	0.13	0.13	0.13	0.13	0.13	0.12	0.14	0.15	0.15	0.15	0.16	0.15	0.14			
100	0.14	0.14	0.13	0.14	0.13	0.14	0.13	0.14	0.13	0.14	0.15	0.15	0.15	0.16	0.15	0.14			
105	0.14	0.15	0.13	0.15	0.13	0.15	0.13	0.15	0.13	0.14	0.16	0.15	0.15	0.16	0.15	0.14			
110	0.14	0.16	0.14	0.16	0.14	0.16	0.14	0.16	0.14	0.14	0.16	0.15	0.15	0.16	0.15	0.14			
115	0.15	0.17	0.14	0.16	0.14	0.17	0.15	0.17	0.15	0.14	0.17	0.15	0.15	0.15	0.15	0.15			
120	0.16	0.17	0.15	0.17	0.15	0.17	0.16	0.17	0.16	0.15	0.18	0.15	0.16	0.16	0.15	0.15			
125	0.16	0.19	0.15	0.18	0.16	0.18	0.16	0.18	0.17	0.15	0.18	0.16	0.17	0.16	0.16	0.15			
130	0.17	0.19	0.16	0.18	0.16	0.19	0.17	0.19	0.18	0.16	0.19	0.17	0.19	0.17	0.17	0.16			
135	0.18	0.19	0.17	0.19	0.17	0.20	0.18	0.20	0.18	0.17	0.20	0.17	0.20	0.18	0.19	0.17			
140	0.18	0.20	0.18	0.20	0.18	0.21	0.19	0.21	0.20	0.18	0.20	0.18	0.21	0.18	0.20	0.18			
145	0.19	0.20	0.18	0.21	0.19	0.22	0.19	0.22	0.20	0.18	0.21	0.19	0.21	0.19	0.21	0.18			
150	0.20	0.21	0.19	0.21	0.20	0.22	0.20	0.22	0.20	0.19	0.22	0.20	0.22	0.20	0.22	0.20			
155	0.21	0.22	0.20	0.23	0.21	0.23	0.21	0.23	0.22	0.20	0.22	0.21	0.23	0.20	0.23	0.20			
160	0.21	0.22	0.21	0.23	0.22	0.24	0.21	0.23	0.22	0.21	0.23	0.21	0.24	0.21	0.23	0.21			
165	0.22	0.23	0.22	0.24	0.22	0.24	0.23	0.23	0.22	0.22	0.23	0.22	0.24	0.22	0.23	0.22			
170	0.22	0.23	0.22	0.24	0.23	0.24	0.23	0.23	0.22	0.23	0.24	0.23	0.24	0.23	0.23	0.22			
175	0.22	0.23	0.23	0.24	0.23	0.24	0.23	0.23	0.22	0.23	0.24	0.23	0.24	0.23	0.23	0.23			
180	0.23	0.23	0.23	0.24	0.24	0.24	0.23	0.23	0.22	0.23	0.23	0.23	0.24	0.23	0.23	0.23			

C Range: 0 - 360DEG
C Interval: 22.5DEG
Test Speed: HIGH
Temperature:25.3℃
Operators:Cloud
Test Date:2024-10-28

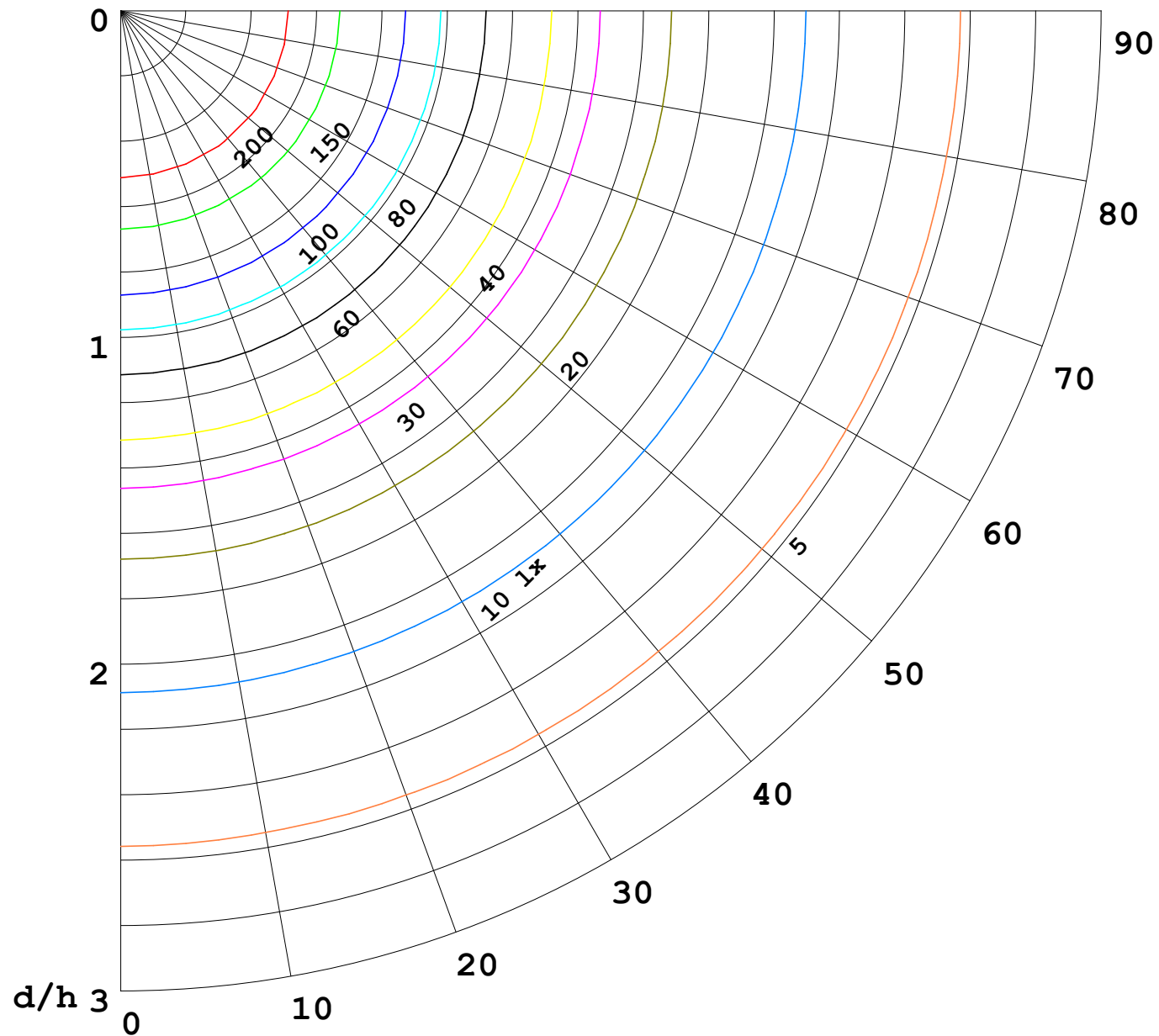
γ Range: 0 - 180DEG
γ Interval: 1.0DEG
Test System:EVERFINE GO-2000B_V1 SYSTEM V2.00.488
Humidity:65.0%
Test Distance:6.360m [K=1.0000]
Remarks: BLUE

I (cd)



1000 lm

$\kappa = 1$



F = 1000 lm
 K = 0.7
 Hcc = 0.8 m
 Hfc = 0.0 m
 Eave = 100 lx

	Pcc	Pw	Pfc
————	70	50	30
————	50	30	20

