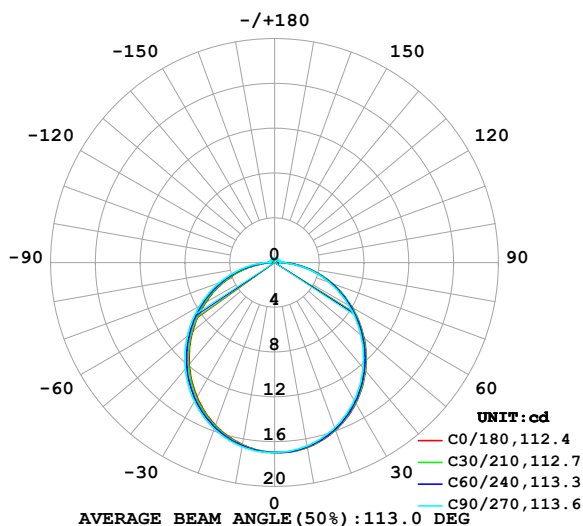


## LUMINAIRE PHOTOMETRIC TEST REPORT

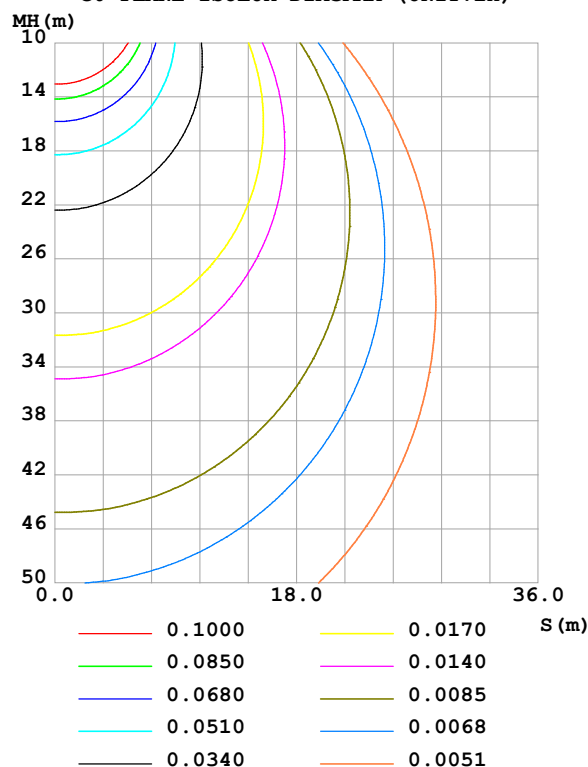
Test:U:24.00V I:0.1413A P:3.391W PF:1.000 Freq:0Hz Lamp Flux:52.2554x1 lm		
NAME: SF16-24V-5050-72-RGBW(5000K)-80-R	TYPE:	WEIGHT:
SPEC.:	DIM.: Length=1m	SERIAL No.:
MFR.: OLympia lighting	SUR.:	Shielding Angle:

DATA OF LAMP		PHOTOMETRIC DATA Eff: 15.41 lm/W			
MODEL	5050	Imax (cd)	16.97	S/MH(C0/180)	1.22
NOMINAL POWER(W)		LOR(%)	100.0	S/MH(C90/270)	1.26
RATED VOLTAGE(V)	24	TOTAL FLUX(lm)	52.255	$\eta$ UP,DN(C0-180)	2.1,49.0
NOMINAL FLUX(lm)	52.2554	CIE CLASS	DIRECT	$\eta$ UP,DN(C180-360)	2.1,46.8
LAMPS INSIDE	1	$\eta$ up (%)	4.2	CIBSE SHR NOM	1.25
TEST VOLTAGE(V)		$\eta$ down (%)	95.8	CIBSE SHR MAX	1.35

LUMINOUS INTENSITY DISTRIBUTION DIAGRAM



C0 PLANE ISOLUX DIAGRAM (UNIT:lx)



C Range: 0 - 360DEG  
C Interval: 30.0DEG  
Test Speed: HIGH  
Temperature: 25.3 °C  
Operators:  
Test Date: 2025-02-25

$\gamma$  Range: 0 - 180DEG  
 $\gamma$  Interval: 1.0DEG  
Test System: EVERFINE GO-2000B\_V1 SYSTEM V2.00.488  
Humidity: 65.0%  
Test Distance: 6.360m [K=1.0000]  
Remarks:

## ZONAL FLUX DIAGRAM

## ZONAL FLUX DIAGRAM:

$\gamma$	C0	C45	C90	C135	C180	C225	C270	C315	$\gamma$	$\Phi$ zone	$\Phi$ total	%lum, lamp
10	16.77	16.72	16.63	16.69	16.52	16.59	16.70	16.62	0- 10	1.605	1.605	3.07,3.07
20	15.92	15.85	15.70	15.81	15.46	15.60	15.80	15.65	10- 20	4.589	6.193	11.9,11.9
30	14.51	14.42	14.22	14.37	13.88	14.07	14.33	14.13	20- 30	6.933	13.13	25.1,25.1
40	12.63	12.53	12.30	12.47	11.87	12.09	12.42	12.17	30- 40	8.336	21.46	41.1,41.1
50	10.41	10.31	10.06	10.25	9.571	9.816	10.17	9.903	40- 50	8.655	30.12	57.6,57.6
60	7.985	7.880	7.650	7.810	7.112	7.363	7.729	7.449	50- 60	7.921	38.04	72.8,72.8
70	5.481	5.382	5.202	5.338	4.613	4.856	5.215	4.937	60- 70	6.314	44.35	84.9,84.9
80	2.996	2.905	2.755	2.845	2.143	2.367	2.750	2.447	70- 80	4.100	48.45	92.7,92.7
90	0.8318	0.6749	0.4854	0.6514	0.4071	0.4455	0.4489	0.4632	80- 90	1.626	50.08	95.8,95.8
100	0.2298	0.3027	0.4797	0.3184	0.2184	0.3143	0.4248	0.3285	90-100	0.3982	50.48	96.6,96.6
110	0.2327	0.3100	0.4594	0.3343	0.2499	0.3172	0.4191	0.3285	100-110	0.3447	50.82	97.3,97.3
120	0.2672	0.3129	0.3958	0.3416	0.2757	0.3258	0.3988	0.3285	110-120	0.3261	51.15	97.9,97.9
130	0.2930	0.3244	0.3525	0.3430	0.3045	0.3301	0.3902	0.3314	120-130	0.2963	51.44	98.4,98.4
140	0.3217	0.3374	0.3526	0.3531	0.3332	0.3417	0.3872	0.3458	130-140	0.2629	51.71	98.9,98.9
150	0.3476	0.3576	0.3786	0.3734	0.3620	0.3576	0.3843	0.3603	140-150	0.2225	51.93	99.4,99.4
160	0.3763	0.3907	0.4046	0.3994	0.3907	0.3806	0.3843	0.3835	150-160	0.1741	52.10	99.7,99.7
170	0.4021	0.4080	0.4161	0.4153	0.4165	0.4065	0.4017	0.4138	160-170	0.1131	52.22	99.9,99.9
180	0.4165	0.4181	0.4161	0.4225	0.4165	0.4123	0.4190	0.4211	170-180	0.0394	52.26	100,100
DEG	LUMINOUS INTENSITY:cd									UNIT:lm		

Conical surface Flux(90deg): 25.819 lm

%lum = 49.4%

%lamp = 49.4%

Conical surface Flux(130deg): 41.441 lm

%lum = 79.3%

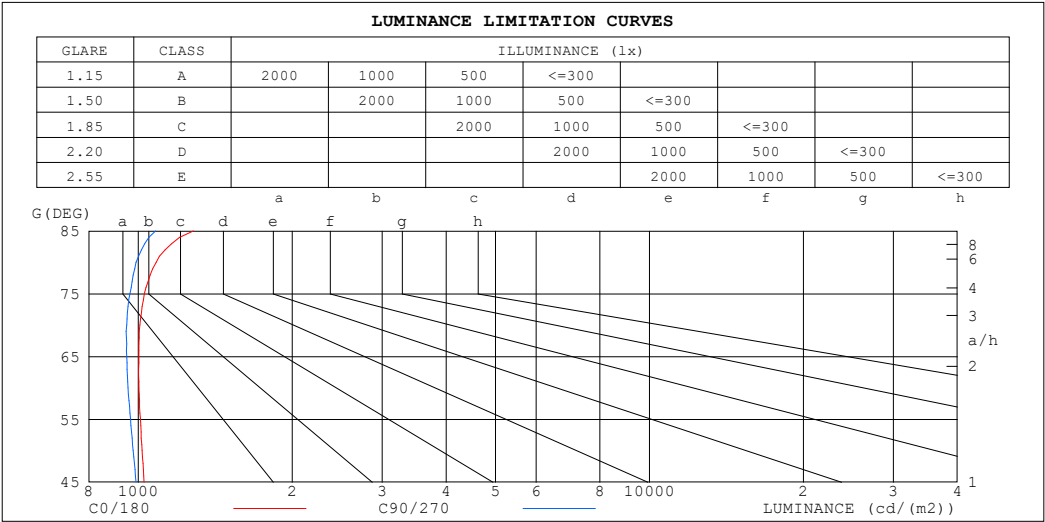
%lamp = 79.3%

C Range: 0 - 360DEG  
 C Interval: 30.0DEG  
 Test Speed: HIGH  
 Temperature:25.3℃  
 Operators:  
 Test Date:2025-02-25

$\gamma$  Range: 0 - 180DEG  
 $\gamma$  Interval: 1.0DEG  
 Test System:EVERFINE GO-2000B\_V1 SYSTEM V2.00.488  
 Humidity:65.0%  
 Test Distance:6.360m [K=1.0000]  
 Remarks:

LUMINANCE LIMITATION CURVES

Test:U:24.00V I:0.1413A P:3.391W PF:1.000 Freq:0Hz Lamp Flux:52.2554x1 lm		
NAME: SF16-24V-5050-72-RGBW(5000K)-80-R	TYPE:	WEIGHT:
SPEC.:	DIM.: Length=1m	SERIAL No.:
MFR.: OLYMPIA lighting	SUR.:	Shielding Angle:



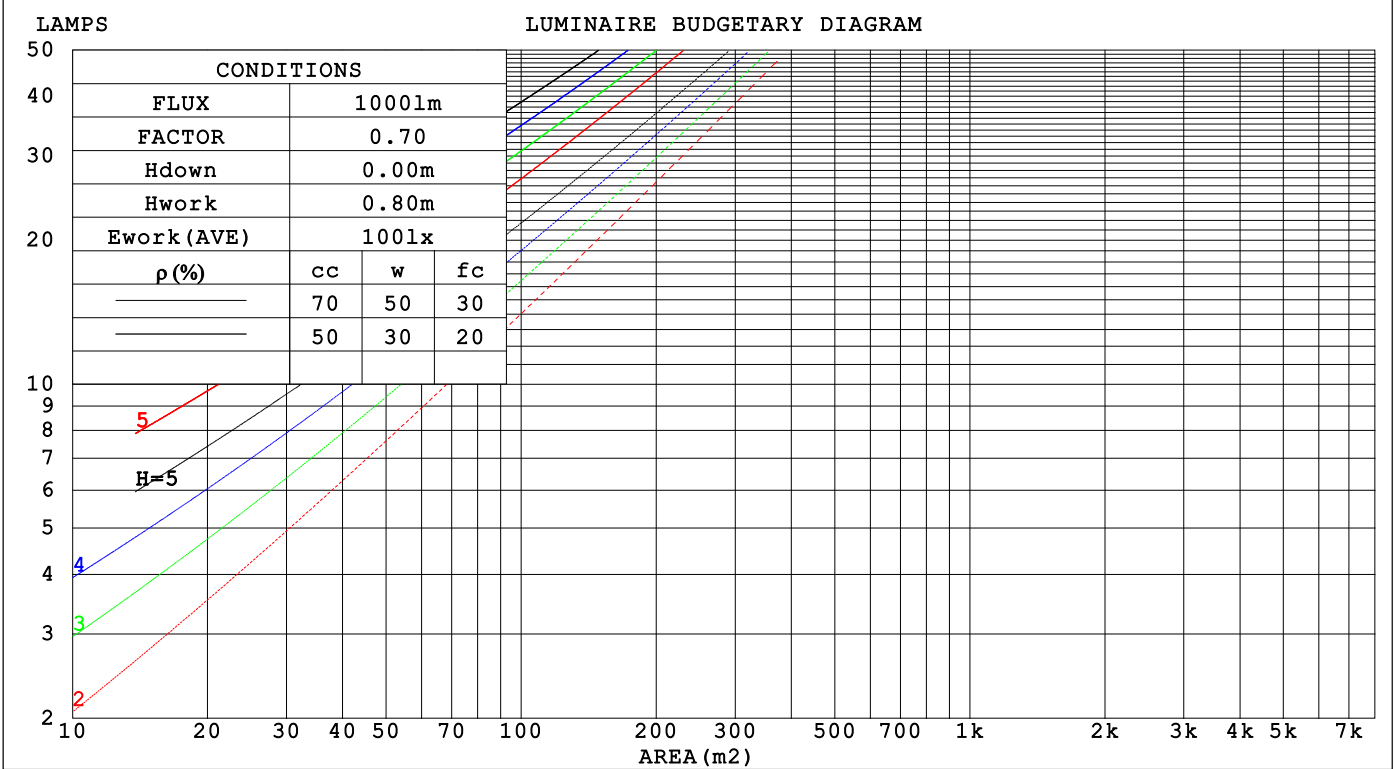
LUMINANCE cd/(m2)		
G (DEG)	C0/180	C90/270
85	1281	1081
80	1083	990
75	1028	963
70	1006	949
65	1002	949
60	1003	955
55	1010	965
50	1017	977
45	1026	990

C Range: 0 - 360DEG	γ Range: 0 - 180DEG
C Interval: 30.0DEG	γ Interval: 1.0DEG
Test Speed: HIGH	Test System:EVERFINE GO-2000B_V1 SYSTEM V2.00.488
Temperature:25.3℃	Humidity:65.0%
Operators:	Test Distance:6.360m [K=1.0000]
Test Date:2025-02-25	Remarks:

CU AND LUMINAIRE BUDGETARY ESTIMATE DIAGRAM

Test:U:24.00V I:0.1413A P:3.391W PF:1.000 Freq:0Hz		
Lamp Flux:52.2554x1 lm		
NAME: SF16-24V-5050-72-RGBW(5000K)-80-R	TYPE:	WEIGHT:
SPEC.:	DIM.: Length=1m	SERIAL No.:
MFR.: OLYMPIA lighting	SUR.:	Shielding Angle:

pcc	80%			70%			50%			30%			10%			0
p <sub>w</sub>	50%	30%	10%	50%	30%	10%	50%	30%	10%	50%	30%	10%	50%	30%	10%	0
p <sub>fc</sub>	20%			20%			20%			20%			20%			0
RCR	RCR:Room Cavity Ratio															



C Range: 0 - 360DEG  
C Interval: 30.0DEG  
Test Speed: HIGH  
Temperature:25.3℃  
Operators:  
Test Date:2025-02-25

γ Range: 0 - 180DEG  
γ Interval: 1.0DEG  
Test System:EVERFINE GO-2000B\_V1 SYSTEM V2.00.488  
Humidity:65.0%  
Test Distance:6.360m [K=1.0000]  
Remarks:

## WEC AND CCEC

Test:U:24.00V I:0.1413A P:3.391W PF:1.000 Freq:0Hz Lamp Flux:52.2554x1 lm		
NAME: SF16-24V-5050-72-RGBW(5000K)-80-R	TYPE:	WEIGHT:
SPEC.:	DIM.: Length=1m	SERIAL No.:
MFR.: OLYMPIA lighting	SUR.:	Shielding Angle:

pcc	80%			70%			50%			30%			10%			0														
pw	50%	30%	10%	50%	30%	10%	50%	30%	10%	50%	30%	10%	50%	30%	10%	0														
pfc	20%			20%			20%			20%			20%			0														
RCR	RCR:Room Cavity Ratio															Wall Exitance Coefficients(WEC)														
0.0																														
1.0	.327	.186	.059	.319	.182	.058	.303	.174	.056	.289	.167	.053	.276	.160	.052															
2.0	.302	.165	.051	.294	.162	.050	.280	.156	.048	.267	.150	.047	.255	.144	.046															
3.0	.276	.147	.044	.270	.144	.043	.257	.139	.042	.246	.135	.041	.235	.130	.040															
4.0	.253	.132	.039	.247	.129	.038	.236	.125	.037	.226	.121	.037	.216	.117	.036															
5.0	.233	.119	.034	.228	.117	.034	.218	.113	.033	.209	.110	.033	.200	.107	.032															
6.0	.215	.108	.031	.211	.106	.031	.202	.103	.030	.193	.101	.030	.186	.098	.029															
7.0	.200	.099	.028	.196	.098	.028	.188	.095	.027	.180	.092	.027	.173	.090	.026															
8.0	.187	.091	.026	.183	.090	.025	.175	.088	.025	.169	.085	.025	.162	.083	.024															
9.0	.175	.084	.024	.171	.083	.023	.164	.081	.023	.158	.079	.023	.152	.077	.022															
10.0	.164	.079	.022	.161	.078	.022	.155	.076	.021	.149	.074	.021	.144	.072	.021															

pcc	80%			70%			50%			30%			10%			0
pw	50%	30%	10%	50%	30%	10%	50%	30%	10%	50%	30%	10%	50%	30%	10%	0
pfc	20%			20%			20%			20%			20%			0
RCR	RCR:Room Cavity Ratio						Ceiling Cavity Exitance Coefficients (CCEC)									
0.0	.222	.222	.222	.190	.190	.190	.130	.130	.130	.074	.074	.074	.024	.024	.024	
1.0	.214	.188	.165	.183	.161	.142	.125	.111	.098	.072	.064	.057	.023	.021	.018	
2.0	.206	.164	.129	.176	.141	.112	.121	.098	.078	.070	.057	.046	.022	.018	.015	
3.0	.198	.147	.106	.170	.127	.092	.117	.088	.064	.067	.051	.038	.022	.017	.012	
4.0	.190	.134	.090	.163	.115	.078	.112	.080	.055	.065	.047	.033	.021	.015	.011	
5.0	.183	.123	.079	.157	.107	.069	.108	.075	.049	.063	.044	.029	.020	.014	.010	
6.0	.176	.115	.072	.151	.100	.062	.104	.070	.044	.060	.041	.026	.019	.013	.009	
7.0	.169	.108	.066	.145	.094	.057	.100	.066	.041	.058	.039	.024	.019	.013	.008	
8.0	.162	.102	.061	.140	.089	.054	.097	.062	.038	.056	.037	.023	.018	.012	.008	
9.0	.156	.098	.058	.134	.085	.051	.093	.060	.036	.054	.035	.021	.018	.012	.007	
10.0	.150	.093	.055	.130	.081	.048	.090	.057	.034	.052	.034	.020	.017	.011	.007	

C Range: 0 - 360DEG  
C Interval: 30.0DEG  
Test Speed: HIGH  
Temperature:25.3℃  
Operators:  
Test Date:2025-02-25

γ Range: 0 - 180DEG  
γ Interval: 1.0DEG  
Test System:EVERFINE GO-2000B\_V1 SYSTEM V2.00.488  
Humidity:65.0%  
Test Distance:6.360m [K=1.0000]  
Remarks:

UGR(Unified Glare Rating) Table

Test:U:24.00V I:0.1413A P:3.391W PF:1.000 Freq:0Hz Lamp Flux:52.2554x1 lm											
NAME: SF16-24V-5050-72-RGBW(5000K)-80-R						TYPE:		WEIGHT:			
SPEC.:						DIM.: Length=1m		SERIAL No.:			
MFR.: OLympia lighting						SUR.:		Shielding Angle:			
ceiling/cavity	0.7	0.7	0.5	0.5	0.3	0.7	0.7	0.5	0.5	0.3	
walls	0.5	0.3	0.5	0.3	0.3	0.5	0.3	0.5	0.3	0.3	
working plane	0.2	0.2	0.2	0.2	0.2	0.2	0.2	0.2	0.2	0.2	
Room dimensions		Viewed crosswise					Viewed endwise				
x = 2H y = 2H	2H	23.0	24.5	23.3	24.8	25.1	22.8	24.3	23.2	24.6	24.9
	3H	24.8	26.2	25.1	26.5	26.8	24.6	25.9	24.9	26.2	26.6
	4H	25.6	26.9	26.0	27.2	27.6	25.3	26.6	25.7	27.0	27.3
	6H	26.3	27.6	26.7	27.9	28.3	26.0	27.2	26.4	27.6	28.0
	8H	26.6	27.8	27.0	28.2	28.6	26.3	27.5	26.7	27.8	28.2
	12H	26.9	28.0	27.3	28.4	28.8	26.5	27.7	26.9	28.0	28.4
4H	2H	23.7	25.0	24.0	25.3	25.6	23.5	24.8	23.9	25.2	25.5
	3H	25.6	26.8	26.0	27.1	27.5	25.4	26.6	25.9	27.0	27.4
	4H	26.6	27.6	27.0	28.0	28.5	26.4	27.4	26.8	27.8	28.2
	6H	27.5	28.4	27.9	28.8	29.3	27.2	28.1	27.7	28.6	29.0
	8H	27.9	28.7	28.3	29.2	29.6	27.5	28.4	28.0	28.9	29.3
	12H	28.2	29.0	28.7	29.5	30.0	27.8	28.6	28.3	29.1	29.6
8H	4H	26.9	27.8	27.4	28.3	28.7	26.7	27.6	27.2	28.1	28.5
	6H	28.0	28.7	28.5	29.2	29.7	27.8	28.5	28.3	29.0	29.5
	8H	28.5	29.2	29.1	29.7	30.2	28.3	28.9	28.8	29.4	29.9
	12H	29.0	29.6	29.6	30.1	30.7	28.7	29.2	29.2	29.8	30.3
12H	4H	27.0	27.8	27.5	28.2	28.7	26.8	27.6	27.3	28.1	28.6
	6H	28.1	28.8	28.7	29.3	29.8	27.9	28.5	28.4	29.0	29.6
	8H	28.7	29.3	29.3	29.8	30.4	28.4	29.0	29.0	29.5	30.1
Variations with the observer position at spacings(CIE Pub.117):											
S = 1.0H		+ 0.1 / - 0.2					+ 0.1 / - 0.2				
1.5H		+ 0.2 / - 0.3					+ 0.2 / - 0.3				
2.0H		+ 0.1 / - 0.3					+ 0.1 / - 0.3				

CIE Pub.117, 52.26 lm Total Lamp Luminous Flux Correct (8log(F/F0) = -10.3)  
Area: 0.016 m2

C Range: 0 - 360DEG  
C Interval: 30.0DEG  
Test Speed: HIGH  
Temperature:25.3℃  
Operators:  
Test Date:2025-02-25

γ Range: 0 - 180DEG  
γ Interval: 1.0DEG  
Test System:EVERFINE GO-2000B\_V1 SYSTEM V2.00.488  
Humidity:65.0%  
Test Distance:6.360m [K=1.0000]  
Remarks:

## UTILIZATION FACTORS TABLE

Test:U:24.00V I:0.1413A P:3.391W PF:1.000 Freq:0Hz Lamp Flux:52.2554x1 lm		
NAME: SF16-24V-5050-72-RGBW(5000K)-80-R	TYPE:	WEIGHT:
SPEC.:	DIM.: Length=1m	SERIAL No.:
MFR.: OLympia lighting	SUR.:	Shielding Angle:

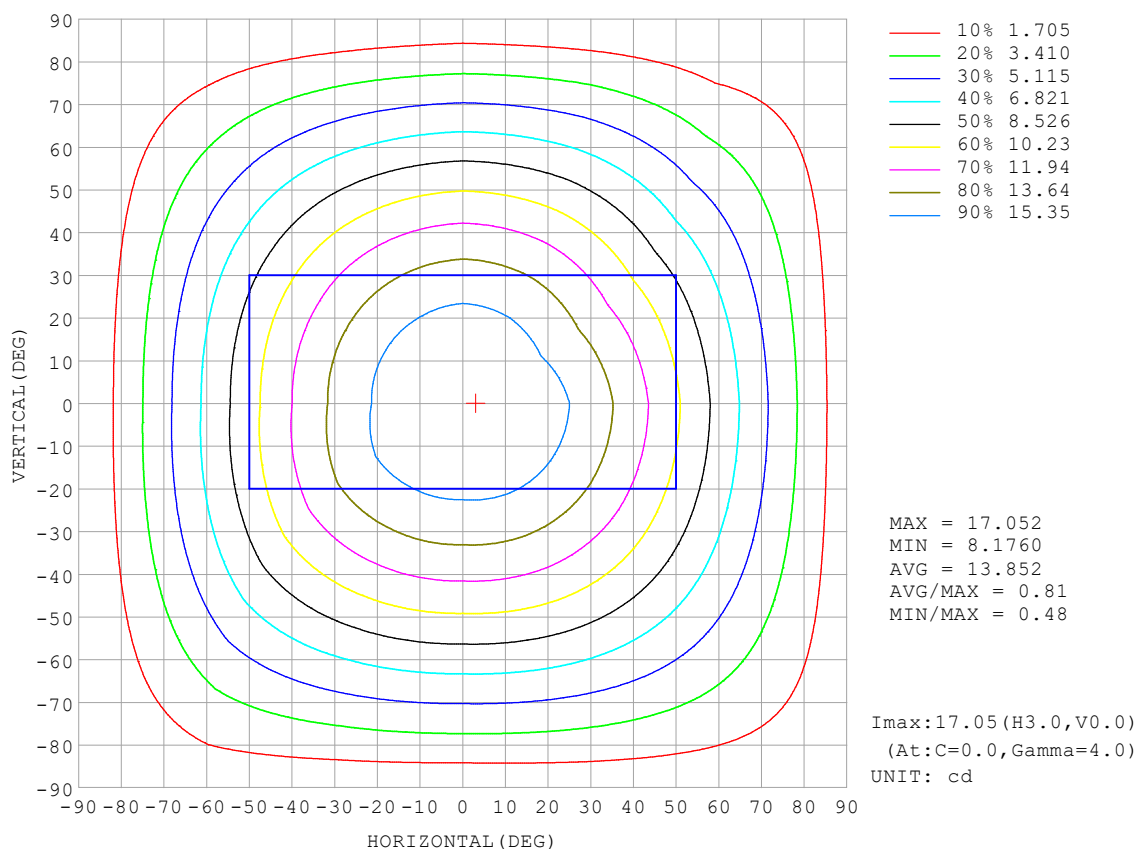
REFLECTANCE										
Ceiling	0.8	0.8	0.8	0.7	0.7	0.7	0.5	0.5	0.5	0
Walls	0.7	0.5	0.3	0.7	0.5	0.3	0.7	0.5	0.3	0
Working plane	0.2	0.2	0.2	0.2	0.2	0.2	0.2	0.2	0.2	0
ROOM INDEX	UTILIZATION FACTORS (PERCENT) $k(RI) \times RCR = 5$									
$k = 0.60$	55	44	37	55	43	37	53	43	36	30
0.80	65	53	46	64	53	46	62	52	45	38
1.00	73	62	54	72	61	54	69	62	53	46
1.25	81	70	62	79	69	62	76	67	61	53
1.50	86	75	68	84	74	67	80	72	66	57
2.00	92	83	77	90	82	76	86	79	74	65
2.50	97	88	82	94	87	81	90	83	78	69
3.00	100	93	87	97	91	85	93	87	83	73
4.00	104	98	93	101	96	91	96	92	88	78
5.00	107	101	97	104	99	95	99	95	91	81
ROOM INDEX	UF (total)									Direct
According to DIN EN 13032-2 2004			Suspended					SHRNOM = 1.25		

C Range: 0 - 360DEG  
 C Interval: 30.0DEG  
 Test Speed: HIGH  
 Temperature: 25.3°C  
 Operators:  
 Test Date: 2025-02-25

γ Range: 0 - 180DEG  
 γ Interval: 1.0DEG  
 Test System: EVERFINE GO-2000B\_V1 SYSTEM V2.00.488  
 Humidity: 65.0%  
 Test Distance: 6.360m [K=1.0000]  
 Remarks:

## ISOCANDELA DIAGRAM

Test:U:24.00V I:0.1413A P:3.391W PF:1.000 Freq:0Hz Lamp Flux:52.2554x1 lm		
NAME: SF16-24V-5050-72-RGBW(5000K)-80-R	TYPE:	WEIGHT:
SPEC.:	DIM.: Length=1m	SERIAL No.:
MFR.: OLympia lighting	SUR.:	Shielding Angle:



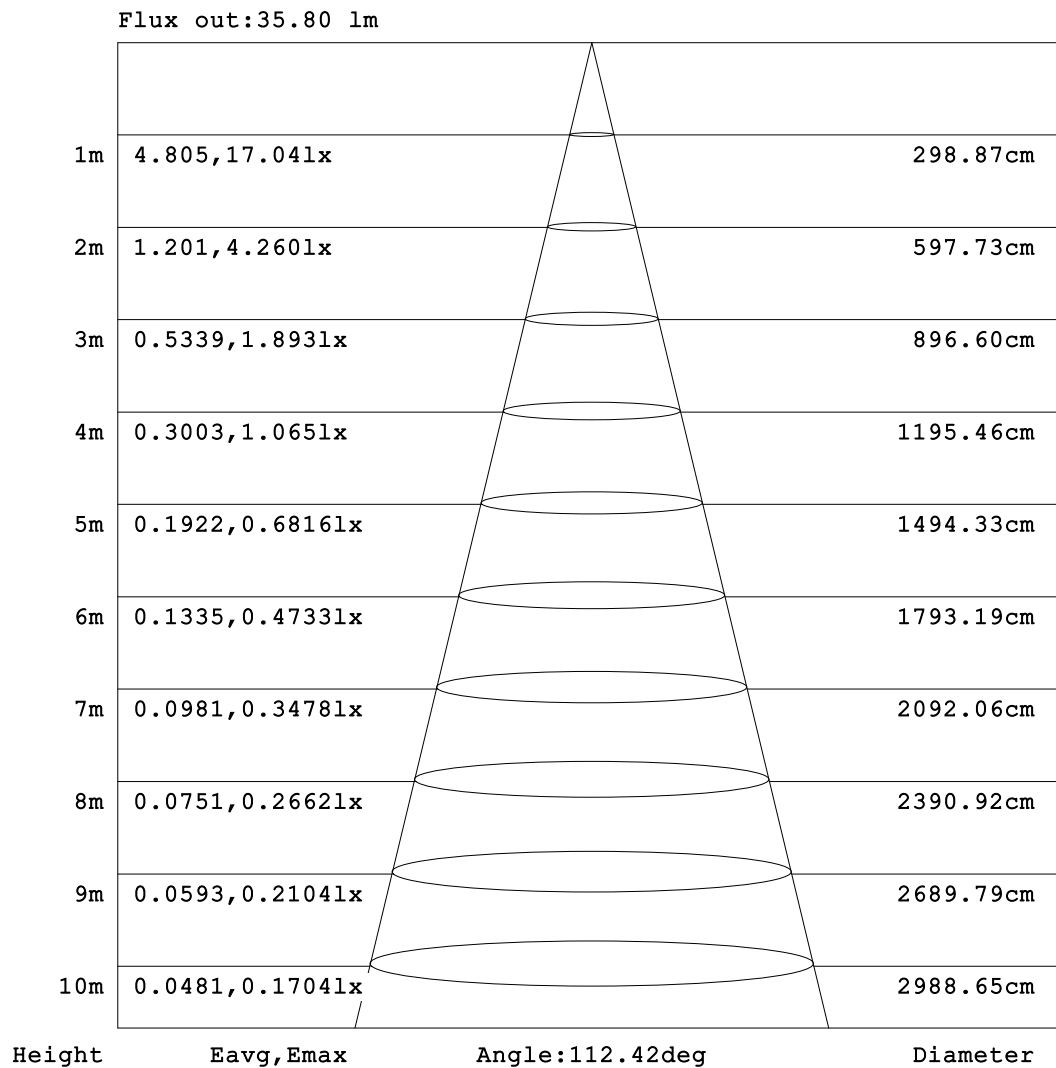
C Range: 0 - 360DEG  
C Interval: 30.0DEG  
Test Speed: HIGH  
Temperature:25.3℃  
Operators:  
Test Date:2025-02-25

γ Range: 0 - 180DEG  
γ Interval: 1.0DEG  
Test System:EVERFINE GO-2000B\_V1 SYSTEM V2.00.488  
Humidity:65.0%  
Test Distance:6.360m [K=1.0000]  
Remarks:



## AAI Figure

Test:U:24.00V I:0.1413A P:3.391W PF:1.000 Freq:0Hz Lamp Flux:52.2554x1 lm		
NAME: SF16-24V-5050-72-RGBW(5000K)-80-R	TYPE:	WEIGHT:
SPEC.:	DIM.: Length=1m	SERIAL No.:
MFR.: OLympia lighting	SUR.:	Shielding Angle:



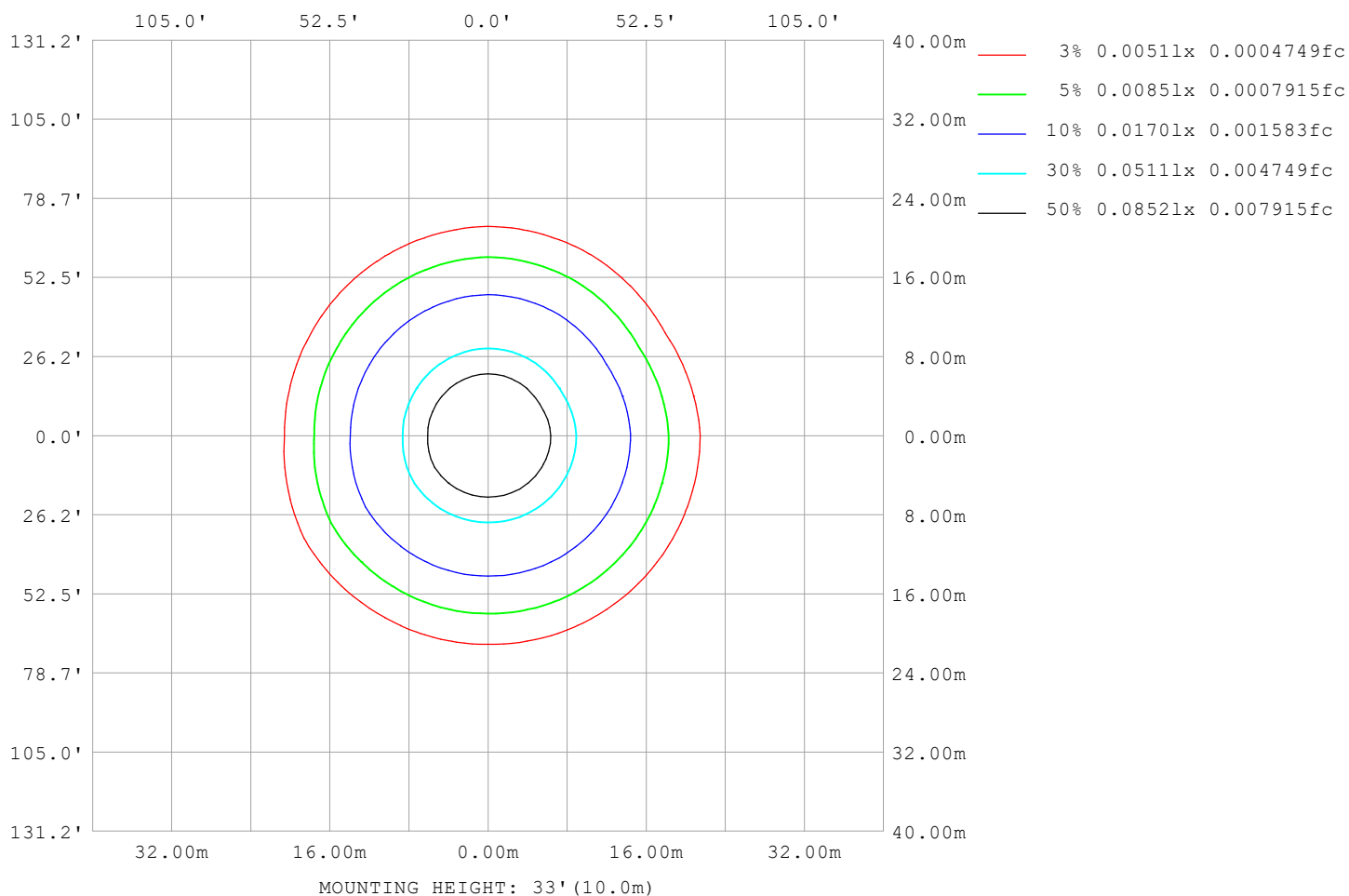
Note:The Curves indicate the illuminated area and the average illumination when the luminaire is at different distance.

C Range: 0 - 360DEG  
C Interval: 30.0DEG  
Test Speed: HIGH  
Temperature:25.3℃  
Operators:  
Test Date:2025-02-25

γ Range: 0 - 180DEG  
γ Interval: 1.0DEG  
Test System:EVERFINE GO-2000B\_V1 SYSTEM V2.00.488  
Humidity:65.0%  
Test Distance:6.360m [K=1.0000]  
Remarks:

## ISOLUX DIAGRAM

Test:U:24.00V I:0.1413A P:3.391W PF:1.000 Freq:0Hz Lamp Flux:52.2554x1 lm		
NAME: SF16-24V-5050-72-RGBW(5000K)-80-R	TYPE:	WEIGHT:
SPEC.:	DIM.: Length=1m	SERIAL No.:
MFR.: OLympia lighting	SUR.:	Shielding Angle:



C Range: 0 - 360DEG  
C Interval: 30.0DEG  
Test Speed: HIGH  
Temperature: 25.3°C  
Operators:  
Test Date: 2025-02-25

γ Range: 0 - 180DEG  
γ Interval: 1.0DEG  
Test System: EVERFINE GO-2000B\_V1 SYSTEM V2.00.488  
Humidity: 65.0%  
Test Distance: 6.360m [K=1.0000]  
Remarks:

## LED Avg.L Report

Test:U:24.00V I:0.1413A P:3.391W PF:1.000 Freq:0Hz Lamp Flux:52.2554x1 lm		
NAME: SF16-24V-5050-72-RGBW(5000K)-80-R	TYPE:	WEIGHT:
SPEC.:	DIM.: Length=1m	SERIAL No.:
MFR.: OLympia lighting	SUR.:	Shielding Angle:

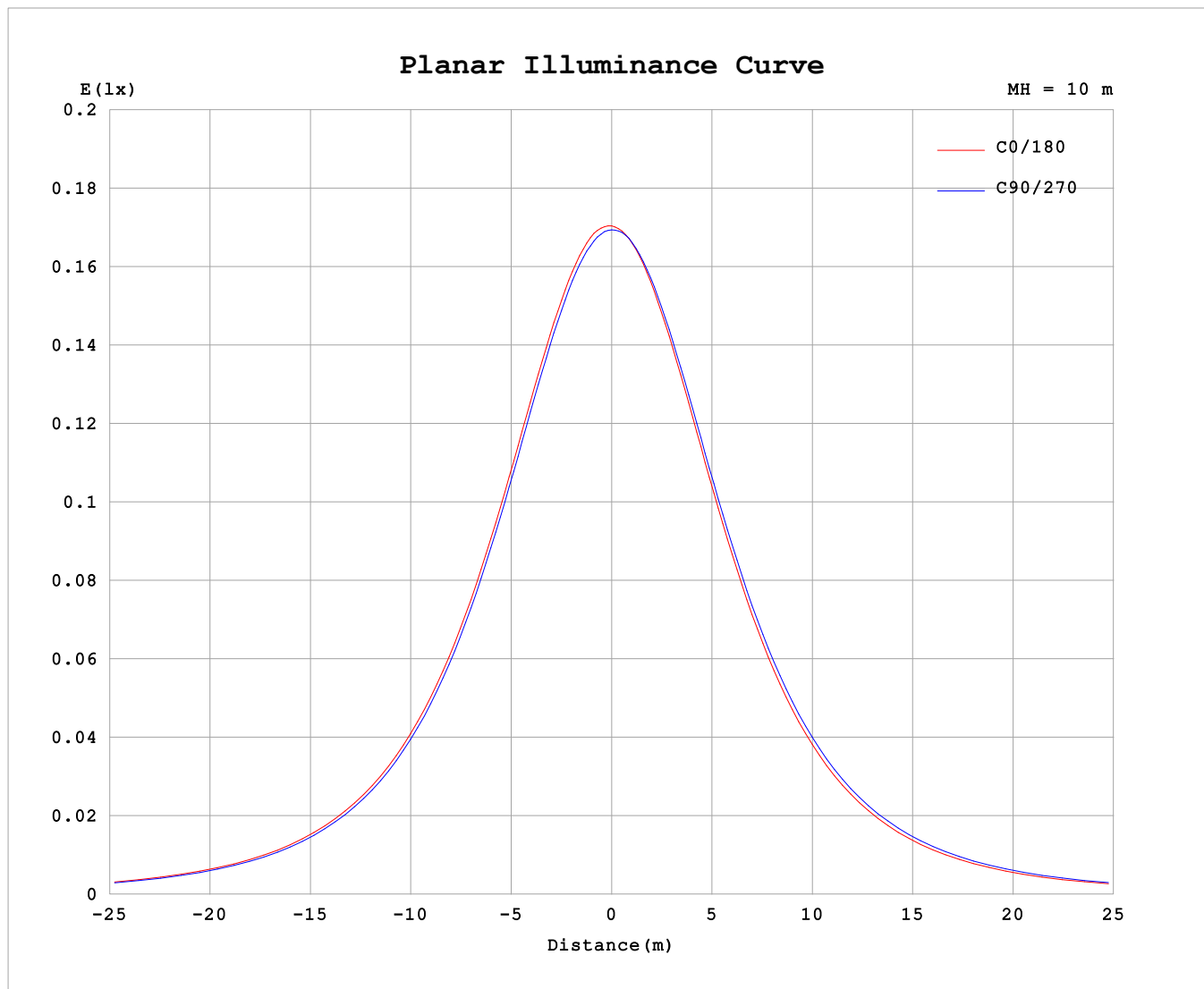
AvgL	cd/m2
L_0~180 (65) av	932
L_0~180 (75) av	919
L_0~180 (85) av	1011
L_90~270 (65) av	954
L_90~270 (75) av	960
L_90~270 (85) av	1088
L_45 (65) av	943
L_45 (75) av	937
L_45 (85) av	1023

Standard: GB/T 29293-2012

C Range: 0 - 360DEG  
C Interval: 30.0DEG  
Test Speed: HIGH  
Temperature:25.3℃  
Operators:  
Test Date:2025-02-25

γ Range: 0 - 180DEG  
γ Interval: 1.0DEG  
Test System:EVERFINE GO-2000B\_V1 SYSTEM V2.00.488  
Humidity:65.0%  
Test Distance:6.360m [K=1.0000]  
Remarks:

## Planar Illuminance Curve



C Range: 0 - 360DEG  
C Interval: 30.0DEG  
Test Speed: HIGH  
Temperature: 25.3 °C  
Operators:  
Test Date: 2025-02-25

$\gamma$  Range: 0 - 180DEG  
 $\gamma$  Interval: 1.0DEG  
Test System: EVERFINE GO-2000B\_V1 SYSTEM V2.00.488  
Humidity: 65.0%  
Test Distance: 6.360m [K=1.0000]  
Remarks:

## LUMINOUS DISTRIBUTION INTENSITY DATA

Test:U:24.00V I:0.1413A P:3.391W PF:1.000 Freq:0Hz Lamp Flux:52.2554x1 lm											
NAME: SF16-24V-5050-72-RGBW(5000K)-80-R						TYPE:			WEIGHT:		
SPEC.:						DIM.: Length=1m			SERIAL No.:		
MFR.: OLympia lighting						SUR.:			Shielding Angle:		

Table--1

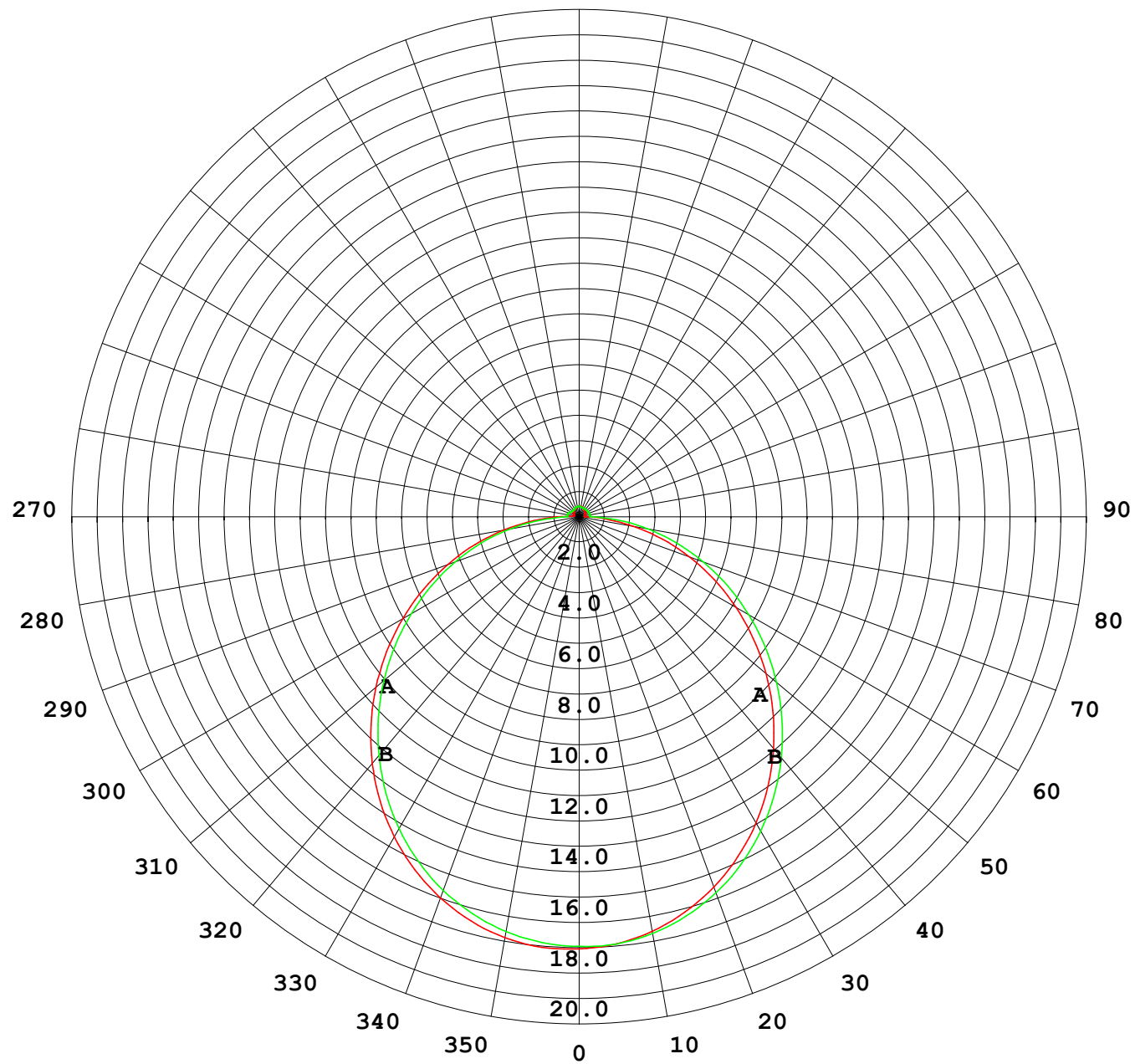
UNIT: cd

C (DEG) γ (DEG)	0	30	60	90	120	150	180	210	240	270	300	330							
0	17.0	17.0	17.0	17.0	17.0	17.0	17.0	17.0	17.0	17.0	17.0	17.0							
5	17.0	16.9	16.9	16.9	16.9	16.9	16.8	16.9	16.9	16.9	16.9	16.9							
10	16.8	16.7	16.7	16.6	16.7	16.7	16.5	16.6	16.6	16.7	16.6	16.6							
15	16.4	16.4	16.3	16.2	16.3	16.4	16.1	16.1	16.2	16.3	16.3	16.2							
20	15.9	15.9	15.8	15.7	15.8	15.9	15.5	15.5	15.7	15.8	15.7	15.6							
25	15.3	15.2	15.2	15.0	15.1	15.2	14.7	14.8	15.0	15.1	15.1	14.9							
30	14.5	14.5	14.4	14.2	14.3	14.4	13.9	14.0	14.2	14.3	14.2	14.0							
35	13.6	13.6	13.5	13.3	13.4	13.6	12.9	13.0	13.2	13.4	13.3	13.1							
40	12.6	12.6	12.5	12.3	12.4	12.6	11.9	12.0	12.2	12.4	12.3	12.0							
45	11.6	11.5	11.4	11.2	11.3	11.5	10.7	10.9	11.1	11.3	11.2	10.9							
50	10.4	10.4	10.2	10.1	10.1	10.3	9.57	9.69	9.94	10.2	10.1	9.75							
55	9.22	9.17	9.05	8.87	8.94	9.14	8.35	8.47	8.73	8.97	8.85	8.53							
60	7.99	7.94	7.82	7.65	7.71	7.91	7.11	7.23	7.50	7.73	7.61	7.29							
65	6.74	6.69	6.58	6.43	6.49	6.66	5.86	5.98	6.24	6.47	6.36	6.03							
70	5.48	5.43	5.34	5.20	5.27	5.41	4.61	4.73	4.98	5.21	5.10	4.78							
75	4.24	4.19	4.10	3.99	4.01	4.16	3.38	3.49	3.73	3.96	3.84	3.53							
80	3.00	2.95	2.86	2.75	2.77	2.92	2.14	2.25	2.49	2.75	2.60	2.29							
85	1.78	1.71	1.63	1.51	1.54	1.69	1.04	1.10	1.26	1.53	1.36	1.14							
90	0.83	0.74	0.61	0.49	0.58	0.73	0.41	0.46	0.44	0.45	0.47	0.46							
95	0.28	0.23	0.37	0.48	0.38	0.26	0.20	0.27	0.36	0.43	0.36	0.30							
100	0.23	0.24	0.37	0.48	0.38	0.25	0.22	0.26	0.36	0.42	0.36	0.30							
105	0.23	0.24	0.37	0.47	0.38	0.26	0.23	0.26	0.36	0.42	0.36	0.30							
110	0.23	0.26	0.36	0.46	0.39	0.28	0.25	0.27	0.36	0.42	0.36	0.30							
115	0.25	0.28	0.35	0.42	0.39	0.29	0.26	0.27	0.36	0.41	0.36	0.30							
120	0.27	0.29	0.34	0.40	0.38	0.30	0.28	0.29	0.36	0.40	0.36	0.30							
125	0.28	0.31	0.33	0.37	0.37	0.31	0.29	0.29	0.37	0.39	0.36	0.30							
130	0.29	0.32	0.33	0.35	0.36	0.33	0.30	0.29	0.37	0.39	0.36	0.30							
135	0.31	0.33	0.33	0.35	0.35	0.34	0.31	0.31	0.37	0.39	0.37	0.31							
140	0.32	0.35	0.33	0.35	0.35	0.35	0.33	0.32	0.37	0.39	0.37	0.32							
145	0.34	0.36	0.33	0.36	0.35	0.37	0.35	0.33	0.37	0.38	0.37	0.33							
150	0.35	0.37	0.35	0.38	0.36	0.39	0.36	0.34	0.38	0.38	0.38	0.34							
155	0.36	0.39	0.36	0.40	0.38	0.39	0.38	0.36	0.38	0.38	0.38	0.36							
160	0.38	0.40	0.38	0.40	0.39	0.41	0.39	0.37	0.39	0.38	0.40	0.37							
165	0.39	0.41	0.39	0.42	0.40	0.43	0.41	0.38	0.41	0.39	0.41	0.39							
170	0.40	0.42	0.40	0.42	0.41	0.42	0.42	0.40	0.42	0.40	0.42	0.41							
175	0.41	0.42	0.41	0.42	0.42	0.42	0.42	0.40	0.42	0.41	0.43	0.41							
180	0.42	0.42	0.42	0.42	0.42	0.42	0.42	0.41	0.42	0.42	0.43	0.42							

C Range: 0 - 360DEG  
C Interval: 30.0DEG  
Test Speed: HIGH  
Temperature:25.3℃  
Operators:  
Test Date:2025-02-25

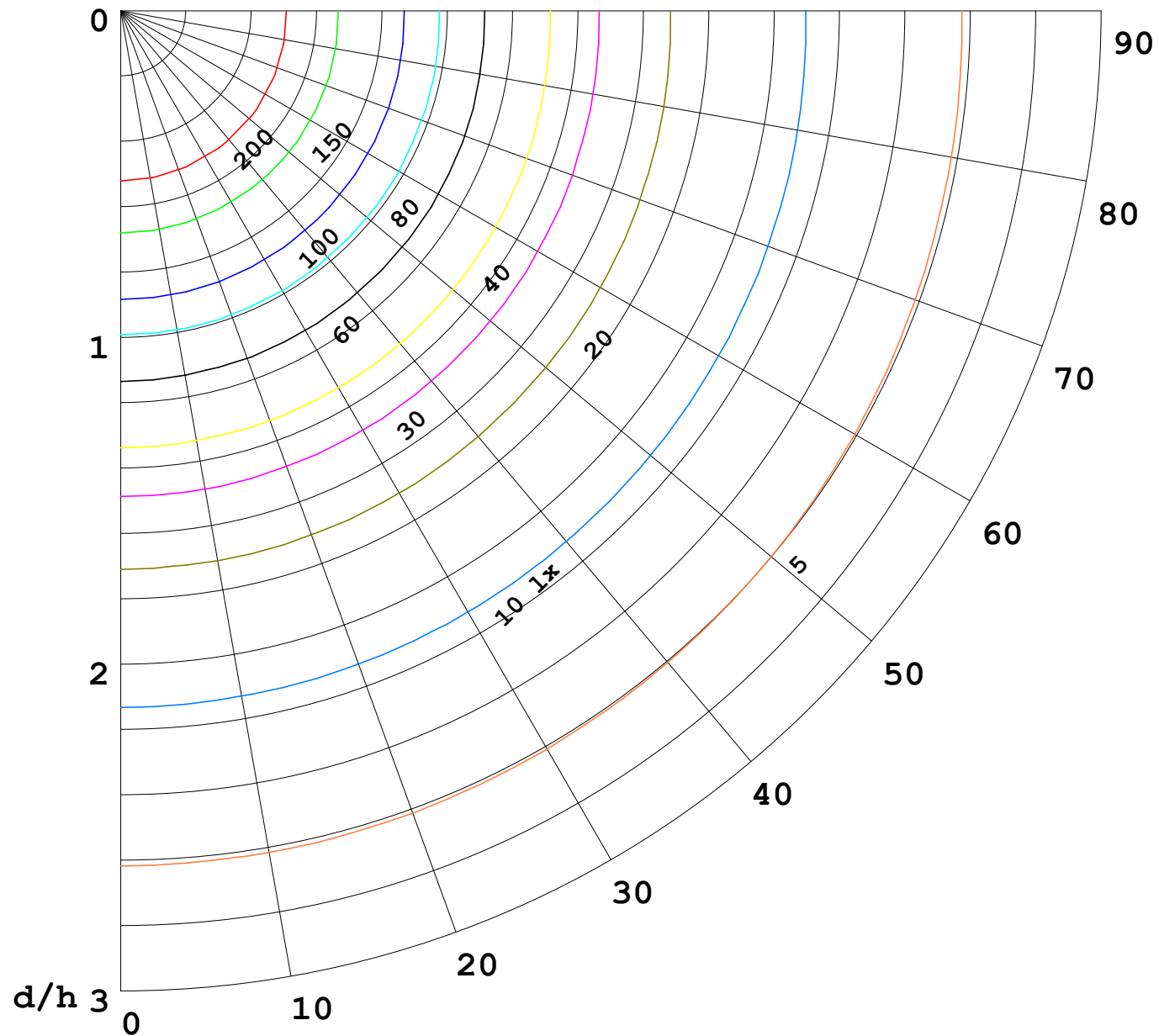
γ Range: 0 - 180DEG  
γ Interval: 1.0DEG  
Test System:EVERFINE GO-2000B\_V1 SYSTEM V2.00.488  
Humidity:65.0%  
Test Distance:6.360m [K=1.0000]  
Remarks:

I (cd)



1000 lm

$\kappa = 1$



F = 1000 lm  
 K = 0.7  
 Hcc = 0.8 m  
 Hfc = 0.0 m  
 Eave = 100 lx

	Pcc	Pw	Pfc
—————	70	50	30
—————	50	30	20

