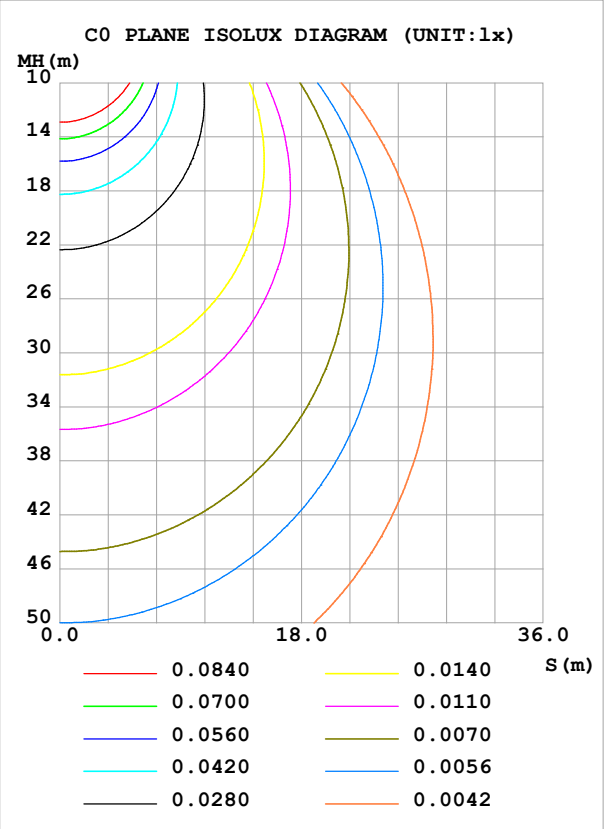
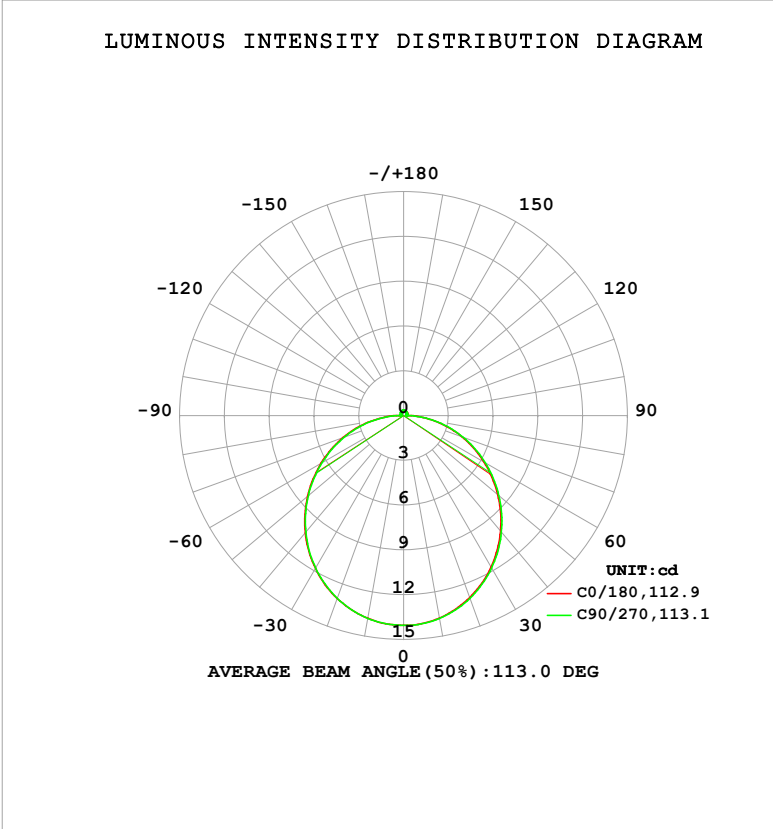


LUMINAIRE PHOTOMETRIC TEST REPORT

Test:U:24.00V I:0.1426A P:3.422W PF:1.000 Freq:0Hz Lamp Flux:43.1128x1 lm		
NAME: SF16-24V-5050-72-RGBW-80	TYPE:	WEIGHT:
SPEC.:	DIM.: Length=1m	SERIAL No.:
MFR.:	SUR.:	Shielding Angle:

DATA OF LAMP		PHOTOMETRIC DATA				Eff: 12.60 lm/W
MODEL		Imax (cd)	14.05	S/MH(C0/180)	1.25	
NOMINAL POWER(W)		LOR(%)	100.0	S/MH(C90/270)	1.25	
RATED VOLTAGE(V)		TOTAL FLUX(lm)	43.113	η UP,DN(C0-180)	1.9,48.0	
NOMINAL FLUX(lm)	43.1128	CIE CLASS	DIRECT	η UP,DN(C180-360)	2.0,48.2	
LAMPS INSIDE	1	η up (%)	3.9	CIBSE SHR NOM	1.25	
TEST VOLTAGE(V)		η down (%)	96.1	CIBSE SHR MAX	1.35	



C Range: 0 - 360DEG	γ Range: 0 - 180DEG
C Interval: 22.5DEG	γ Interval: 1.0DEG
Test Speed: HIGH	Test System:EVERFINE GO-2000B_V1 SYSTEM V2.00.488
Temperature:25.3℃	Humidity:65.0%
Operators:Cloud	Test Distance:6.360m [K=1.0000]
Test Date:2024-10-28	Remarks: RED

ZONAL FLUX DIAGRAM

ZONAL FLUX DIAGRAM:

γ	C0	C45	C90	C135	C180	C225	C270	C315	γ	Φ zone	Φ total	%lum, lamp
10	13.78	13.80	13.80	13.81	13.79	13.80	13.80	13.79	0- 10	1.329	1.329	3.08,3.08
20	12.97	13.00	13.03	13.05	13.04	13.04	13.03	13.01	10- 20	3.800	5.130	11.9,11.9
30	11.72	11.76	11.79	11.82	11.83	11.83	11.80	11.78	20- 30	5.741	10.87	25.2,25.2
40	10.11	10.16	10.20	10.24	10.25	10.24	10.20	10.18	30- 40	6.904	17.78	41.2,41.2
50	8.237	8.288	8.336	8.375	8.397	8.373	8.334	8.307	40- 50	7.169	24.94	57.9,57.9
60	6.215	6.273	6.328	6.351	6.384	6.364	6.312	6.291	50- 60	6.560	31.50	73.1,73.1
70	4.153	4.191	4.237	4.269	4.316	4.276	4.226	4.216	60- 70	5.225	36.73	85.2,85.2
80	2.116	2.144	2.166	2.213	2.260	2.215	2.155	2.154	70- 80	3.382	40.11	93,93
90	0.5485	0.4348	0.2148	0.4620	0.5810	0.4557	0.2393	0.4569	80- 90	1.323	41.44	96.1,96.1
100	0.2093	0.2025	0.1933	0.1987	0.1946	0.2409	0.2298	0.2757	90-100	0.2792	41.71	96.8,96.8
110	0.2201	0.2110	0.2135	0.2130	0.2173	0.2545	0.2286	0.2537	100-110	0.2365	41.95	97.3,97.3
120	0.2490	0.2329	0.2382	0.2401	0.2404	0.2684	0.2424	0.2398	110-120	0.2365	42.19	97.9,97.9
130	0.2694	0.2515	0.2567	0.2649	0.2608	0.2902	0.2828	0.2649	120-130	0.2316	42.42	98.4,98.4
140	0.2925	0.2717	0.2797	0.2908	0.2891	0.3094	0.3100	0.3109	130-140	0.2181	42.64	98.9,98.9
150	0.3140	0.2920	0.3086	0.3138	0.3163	0.3319	0.3317	0.3311	140-150	0.1914	42.83	99.3,99.3
160	0.3359	0.3296	0.3346	0.3368	0.3371	0.3498	0.3519	0.3524	150-160	0.1520	42.98	99.7,99.7
170	0.3403	0.3498	0.3525	0.3513	0.3398	0.3643	0.3632	0.3611	160-170	0.0984	43.08	99.9,99.9
180	0.3418	0.3643	0.3634	0.3657	0.3418	0.3643	0.3663	0.3628	170-180	0.0340	43.11	100,100
DEG	LUMINOUS INTENSITY:cd									UNIT:lm		

Conical surface Flux(90deg): 21.384 lm

%lum = 49.6%

%lamp = 49.6%

Conical surface Flux(130deg): 34.321 lm

%lum = 79.6%

%lamp = 79.6%

C Range: 0 - 360DEG
 C Interval: 22.5DEG
 Test Speed: HIGH
 Temperature:25.3℃
 Operators:Cloud
 Test Date:2024-10-28

γ Range: 0 - 180DEG
 γ Interval: 1.0DEG
 Test System:EVERFINE GO-2000B_V1 SYSTEM V2.00.488
 Humidity:65.0%
 Test Distance:6.360m [K=1.0000]
 Remarks: RED

LUMINANCE LIMITATION CURVES

Test:U:24.00V I:0.1426A P:3.422W PF:1.000 Freq:0Hz Lamp Flux:43.1128x1 lm		
NAME: SF16-24V-5050-72-RGBW-80	TYPE:	WEIGHT:
SPEC.:	DIM.: Length=1m	SERIAL No.:
MFR.:	SUR.:	Shielding Angle:



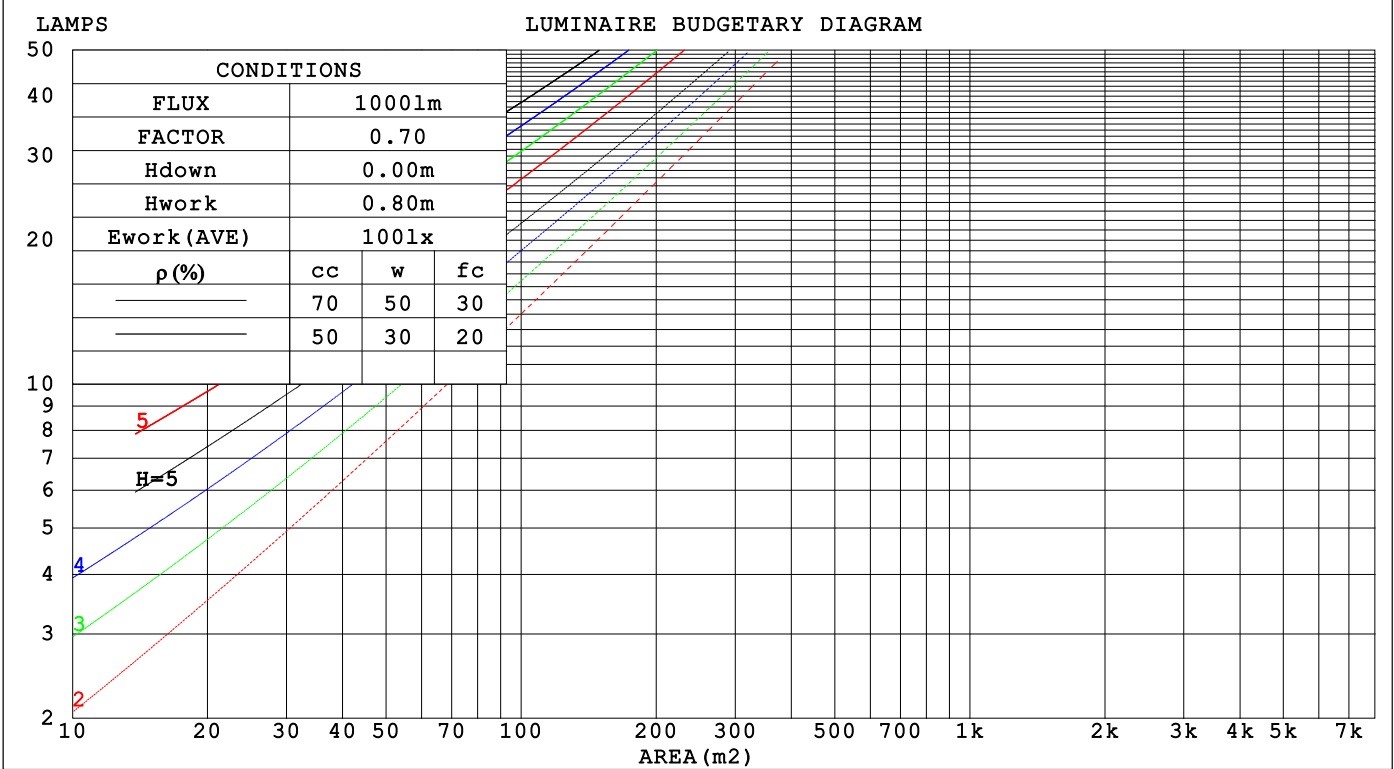
LUMINANCE cd/(m2)		
G (DEG)	C0/180	C90/270
85	781	761
80	714	734
75	708	728
70	712	729
65	719	737
60	729	745
55	739	754
50	751	763
45	762	774

C Range: 0 - 360DEG	γ Range: 0 - 180DEG
C Interval: 22.5DEG	γ Interval: 1.0DEG
Test Speed: HIGH	Test System:EVERFINE GO-2000B_V1 SYSTEM V2.00.488
Temperature:25.3℃	Humidity:65.0%
Operators:Cloud	Test Distance:6.360m [K=1.0000]
Test Date:2024-10-28	Remarks: RED

CU AND LUMINAIRE BUDGETARY ESTIMATE DIAGRAM

Test:U:24.00V I:0.1426A P:3.422W PF:1.000 Freq:0Hz		
Lamp Flux:43.1128x1 lm		
NAME: SF16-24V-5050-72-RGBW-80	TYPE:	WEIGHT:
SPEC.:	DIM.: Length=1m	SERIAL No.:
MFR.:	SUR.:	Shielding Angle:

pcc	80%			70%			50%			30%			10%			0
pw	50%	30%	10%	50%	30%	10%	50%	30%	10%	50%	30%	10%	50%	30%	10%	0
pfc	20%			20%			20%			20%			20%			0
RCR	RCR:Room Cavity Ratio Coefficients of Utilization(CU)															
0.0	1.18	1.18	1.18	1.15	1.15	1.15	1.09	1.09	1.09	1.03	1.03	1.03	.98	.98	.98	.96
1.0	1.02	.97	.93	.99	.95	.92	.94	.91	.88	.90	.87	.84	.86	.83	.81	.79
2.0	.88	.81	.75	.86	.80	.74	.82	.77	.72	.78	.74	.70	.75	.71	.68	.65
3.0	.77	.69	.62	.76	.68	.62	.72	.65	.60	.69	.63	.58	.66	.61	.57	.54
4.0	.68	.59	.53	.67	.59	.52	.64	.57	.51	.61	.55	.50	.58	.53	.49	.46
5.0	.61	.52	.45	.60	.51	.45	.57	.50	.44	.55	.48	.43	.52	.47	.42	.40
6.0	.55	.46	.39	.54	.45	.39	.52	.44	.38	.49	.43	.38	.48	.42	.37	.35
7.0	.50	.41	.35	.49	.40	.34	.47	.39	.34	.45	.38	.33	.43	.37	.33	.31
8.0	.45	.37	.31	.44	.36	.31	.43	.35	.30	.41	.35	.30	.40	.34	.29	.27
9.0	.42	.33	.28	.41	.33	.28	.39	.32	.27	.38	.32	.27	.37	.31	.27	.25
10.0	.38	.30	.25	.38	.30	.25	.36	.29	.25	.35	.29	.24	.34	.28	.24	.22



C Range: 0 - 360DEGC Interval: 22.5DEGTest Speed: HIGHTemperature:25.3℃Operators:CloudTest Date:2024-10-28

γ Range: 0 - 180DEGγ Interval: 1.0DEGTest System:EVERFINE GO-2000B_V1 SYSTEM V2.00.488Humidity:65.0%Test Distance:6.360m [K=1.0000]Remarks: RED

WEC AND CCEC

Test:U:24.00V I:0.1426A P:3.422W PF:1.000 Freq:0Hz Lamp Flux:43.1128x1 lm					
NAME: SF16-24V-5050-72-RGBW-80			TYPE:		WEIGHT:
SPEC.:			DIM.: Length=1m		SERIAL No.:
MFR.:			SUR.:		Shielding Angle:

pcc	80%			70%			50%			30%			10%			0	
pw	50%	30%	10%	50%	30%	10%	50%	30%	10%	50%	30%	10%	50%	30%	10%	0	
pfc	20%			20%			20%			20%			20%			0	
RCR	RCR:Room Cavity Ratio						Wall Exitance Coefficients(WEC)										
0.0																	
1.0	.327	.186	.059	.319	.182	.058	.303	.174	.056	.289	.167	.053	.276	.160	.052		
2.0	.301	.165	.051	.294	.162	.050	.280	.156	.048	.267	.150	.047	.256	.145	.046		
3.0	.276	.147	.044	.270	.144	.043	.257	.139	.042	.246	.135	.041	.235	.130	.040		
4.0	.253	.132	.039	.247	.129	.038	.236	.125	.037	.226	.121	.037	.217	.118	.036		
5.0	.233	.119	.034	.228	.117	.034	.218	.114	.033	.209	.110	.033	.200	.107	.032		
6.0	.216	.108	.031	.211	.107	.031	.202	.104	.030	.194	.101	.030	.186	.098	.029		
7.0	.200	.099	.028	.196	.098	.028	.188	.095	.027	.180	.093	.027	.173	.090	.026		
8.0	.187	.091	.026	.183	.090	.025	.176	.088	.025	.169	.086	.025	.162	.083	.024		
9.0	.175	.084	.024	.171	.083	.023	.165	.081	.023	.159	.079	.023	.153	.078	.022		
10.0	.164	.079	.022	.161	.078	.022	.155	.076	.021	.149	.074	.021	.144	.072	.021		

pcc	80%			70%			50%			30%			10%			0
pw	50%	30%	10%	50%	30%	10%	50%	30%	10%	50%	30%	10%	50%	30%	10%	0
pfc	20%			20%			20%			20%			20%			0
RCR	RCR:Room Cavity Ratio						Ceiling Cavity Exitance Coefficients (CCEC)									
0.0	.220	.220	.220	.188	.188	.188	.128	.128	.128	.074	.074	.074	.024	.024	.024	
1.0	.211	.186	.163	.181	.160	.140	.124	.110	.097	.071	.064	.056	.023	.020	.018	
2.0	.204	.162	.127	.174	.139	.110	.120	.096	.077	.069	.056	.045	.022	.018	.015	
3.0	.196	.145	.104	.168	.125	.090	.115	.087	.063	.067	.051	.037	.021	.016	.012	
4.0	.188	.131	.088	.162	.114	.077	.111	.079	.054	.064	.046	.032	.021	.015	.010	
5.0	.181	.121	.077	.155	.105	.067	.107	.073	.047	.062	.043	.028	.020	.014	.009	
6.0	.173	.113	.069	.149	.098	.060	.103	.068	.043	.060	.040	.025	.019	.013	.008	
7.0	.167	.106	.064	.143	.092	.055	.099	.064	.039	.058	.038	.023	.019	.012	.008	
8.0	.160	.100	.059	.138	.087	.052	.095	.061	.037	.055	.036	.022	.018	.012	.007	
9.0	.154	.095	.056	.133	.083	.049	.092	.058	.035	.054	.034	.021	.017	.011	.007	
10.0	.148	.091	.053	.128	.079	.046	.089	.056	.033	.052	.033	.020	.017	.011	.007	

C Range: 0 - 360DEG
C Interval: 22.5DEG
Test Speed: HIGH
Temperature:25.3℃
Operators:Cloud
Test Date:2024-10-28

γ Range: 0 - 180DEG
γ Interval: 1.0DEG
Test System:EVERFINE GO-2000B_V1 SYSTEM V2.00.488
Humidity:65.0%
Test Distance:6.360m [K=1.0000]
Remarks: RED

UGR(Unified Glare Rating) Table

Test:U:24.00V I:0.1426A P:3.422W PF:1.000 Freq:0Hz Lamp Flux:43.1128x1 lm										
NAME: SF16-24V-5050-72-RGBW-80					TYPE:			WEIGHT:		
SPEC.:					DIM.: Length=1m			SERIAL No.:		
MFR.:					SUR.:			Shielding Angle:		
ceiling/cavity	0.7	0.7	0.5	0.5	0.3	0.7	0.7	0.5	0.5	0.3
walls	0.5	0.3	0.5	0.3	0.3	0.5	0.3	0.5	0.3	0.3
working plane	0.2	0.2	0.2	0.2	0.2	0.2	0.2	0.2	0.2	0.2
Room dimensions	Viewed crosswise					Viewed endwise				
x = 2H y = 2H	22.5	23.9	22.8	24.2	24.5	22.5	24.0	22.9	24.3	24.6
3H	24.1	25.5	24.5	25.8	26.1	24.2	25.6	24.6	25.9	26.2
4H	24.9	26.2	25.3	26.5	26.9	25.0	26.3	25.4	26.6	27.0
6H	25.5	26.7	25.9	27.1	27.4	25.6	26.9	26.0	27.2	27.6
8H	25.7	26.9	26.1	27.3	27.7	25.9	27.1	26.3	27.4	27.8
12H	25.9	27.1	26.4	27.5	27.8	26.1	27.2	26.5	27.6	28.0
4H 2H	23.1	24.4	23.5	24.7	25.1	23.2	24.5	23.5	24.8	25.1
3H	25.0	26.1	25.4	26.5	26.9	25.1	26.2	25.5	26.6	27.0
4H	25.9	26.9	26.3	27.3	27.7	26.0	27.0	26.4	27.4	27.8
6H	26.6	27.6	27.1	28.0	28.4	26.7	27.7	27.2	28.1	28.6
8H	27.0	27.8	27.4	28.3	28.7	27.1	27.9	27.5	28.4	28.8
12H	27.2	28.0	27.7	28.5	29.0	27.3	28.1	27.8	28.6	29.1
8H 4H	26.2	27.1	26.7	27.5	28.0	26.3	27.2	26.8	27.6	28.1
6H	27.2	27.9	27.7	28.4	28.9	27.3	28.0	27.8	28.5	29.0
8H	27.6	28.2	28.1	28.7	29.3	27.7	28.3	28.2	28.8	29.4
12H	28.0	28.5	28.5	29.1	29.6	28.1	28.6	28.6	29.1	29.7
12H 4H	26.2	27.0	26.7	27.5	28.0	26.3	27.1	26.8	27.6	28.1
6H	27.3	27.9	27.8	28.4	28.9	27.4	28.0	27.9	28.5	29.0
8H	27.8	28.3	28.3	28.8	29.4	27.9	28.4	28.4	28.9	29.5
Variations with the observer position at spacings(CIE Pub.117):										
S = 1.0H	+ 0.1 / - 0.2					+ 0.1 / - 0.2				
1.5H	+ 0.2 / - 0.3					+ 0.2 / - 0.3				
2.0H	+ 0.1 / - 0.3					+ 0.1 / - 0.3				

CIE Pub.117, 43.11 lm Total Lamp Luminous Flux Correct (8log(F/F0) = -10.9)
Area: 0.017 m2

C Range: 0 - 360DEG
C Interval: 22.5DEG
Test Speed: HIGH
Temperature:25.3℃
Operators:Cloud
Test Date:2024-10-28

γ Range: 0 - 180DEG
γ Interval: 1.0DEG
Test System:EVERFINE GO-2000B_V1 SYSTEM V2.00.488
Humidity:65.0%
Test Distance:6.360m [K=1.0000]
Remarks: RED

UTILIZATION FACTORS TABLE

Test:U:24.00V I:0.1426A P:3.422W PF:1.000 Freq:0Hz Lamp Flux:43.1128x1 lm		
NAME: SF16-24V-5050-72-RGBW-80	TYPE:	WEIGHT:
SPEC.:	DIM.: Length=1m	SERIAL No.:
MFR.:	SUR.:	Shielding Angle:

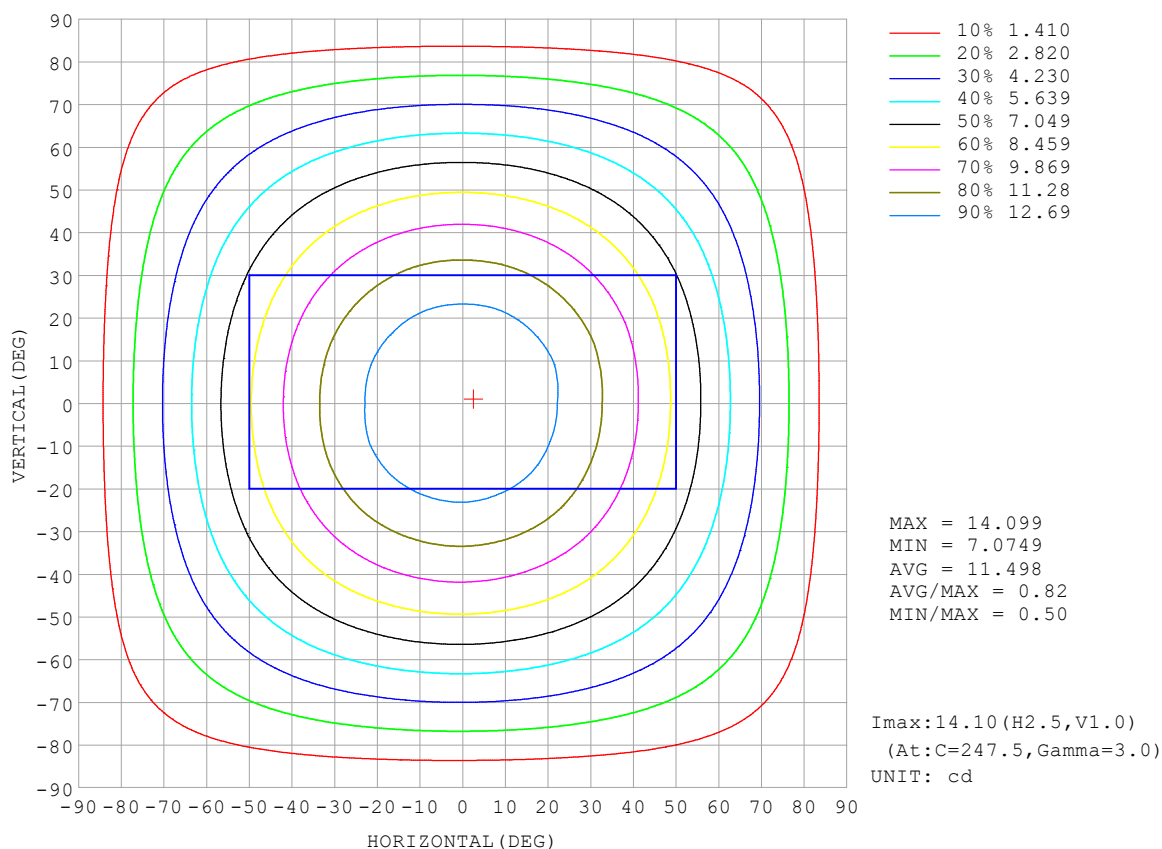
REFLECTANCE										
Ceiling	0.8	0.8	0.8	0.7	0.7	0.7	0.5	0.5	0.5	0
Walls	0.7	0.5	0.3	0.7	0.5	0.3	0.7	0.5	0.3	0
Working plane	0.2	0.2	0.2	0.2	0.2	0.2	0.2	0.2	0.2	0
ROOM INDEX	UTILIZATION FACTORS (PERCENT) $k(RI) \times RCR = 5$									
$k = 0.60$	56	44	37	55	44	37	53	43	36	30
0.80	65	53	46	64	53	46	62	52	45	38
1.00	74	62	55	72	61	54	70	63	54	46
1.25	81	70	62	79	69	62	76	67	61	53
1.50	86	75	68	84	74	67	80	72	66	58
2.00	93	84	77	90	82	76	86	79	74	65
2.50	97	88	82	94	87	81	90	84	79	69
3.00	100	93	87	98	91	86	93	87	83	73
4.00	104	98	93	102	96	91	97	92	88	78
5.00	107	102	97	104	99	95	99	95	92	81
ROOM INDEX	UF (total)									Direct
According to DIN EN 13032-2 2004			Suspended					SHRNOM = 1.25		

C Range: 0 - 360DEG
 C Interval: 22.5DEG
 Test Speed: HIGH
 Temperature: 25.3°C
 Operators: Cloud
 Test Date: 2024-10-28

γ Range: 0 - 180DEG
 γ Interval: 1.0DEG
 Test System: EVERFINE GO-2000B_V1 SYSTEM V2.00.488
 Humidity: 65.0%
 Test Distance: 6.360m [K=1.0000]
 Remarks: RED

ISOCANDELA DIAGRAM

Test:U:24.00V I:0.1426A P:3.422W PF:1.000 Freq:0Hz Lamp Flux:43.1128x1 lm		
NAME: SF16-24V-5050-72-RGBW-80	TYPE:	WEIGHT:
SPEC.:	DIM.: Length=1m	SERIAL No.:
MFR.:	SUR.:	Shielding Angle:

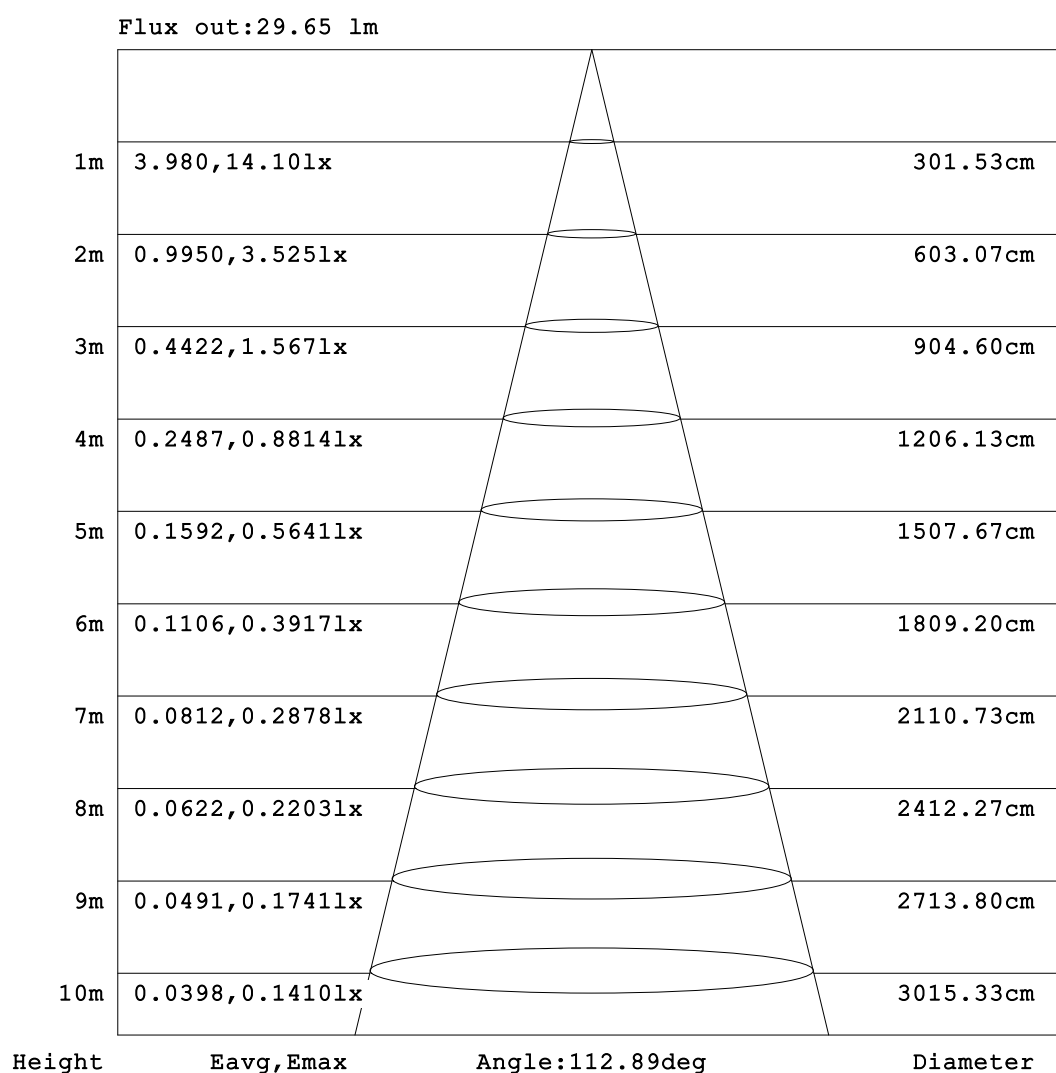


C Range: 0 - 360DEG
C Interval: 22.5DEG
Test Speed: HIGH
Temperature:25.3℃
Operators:Cloud
Test Date:2024-10-28

γ Range: 0 - 180DEG
γ Interval: 1.0DEG
Test System:EVERFINE GO-2000B_V1 SYSTEM V2.00.488
Humidity:65.0%
Test Distance:6.360m [K=1.0000]
Remarks: RED

AAI Figure

Test:U:24.00V I:0.1426A P:3.422W PF:1.000 Freq:0Hz Lamp Flux:43.1128x1 lm		
NAME: SF16-24V-5050-72-RGBW-80	TYPE:	WEIGHT:
SPEC.:	DIM.: Length=1m	SERIAL No.:
MFR.:	SUR.:	Shielding Angle:



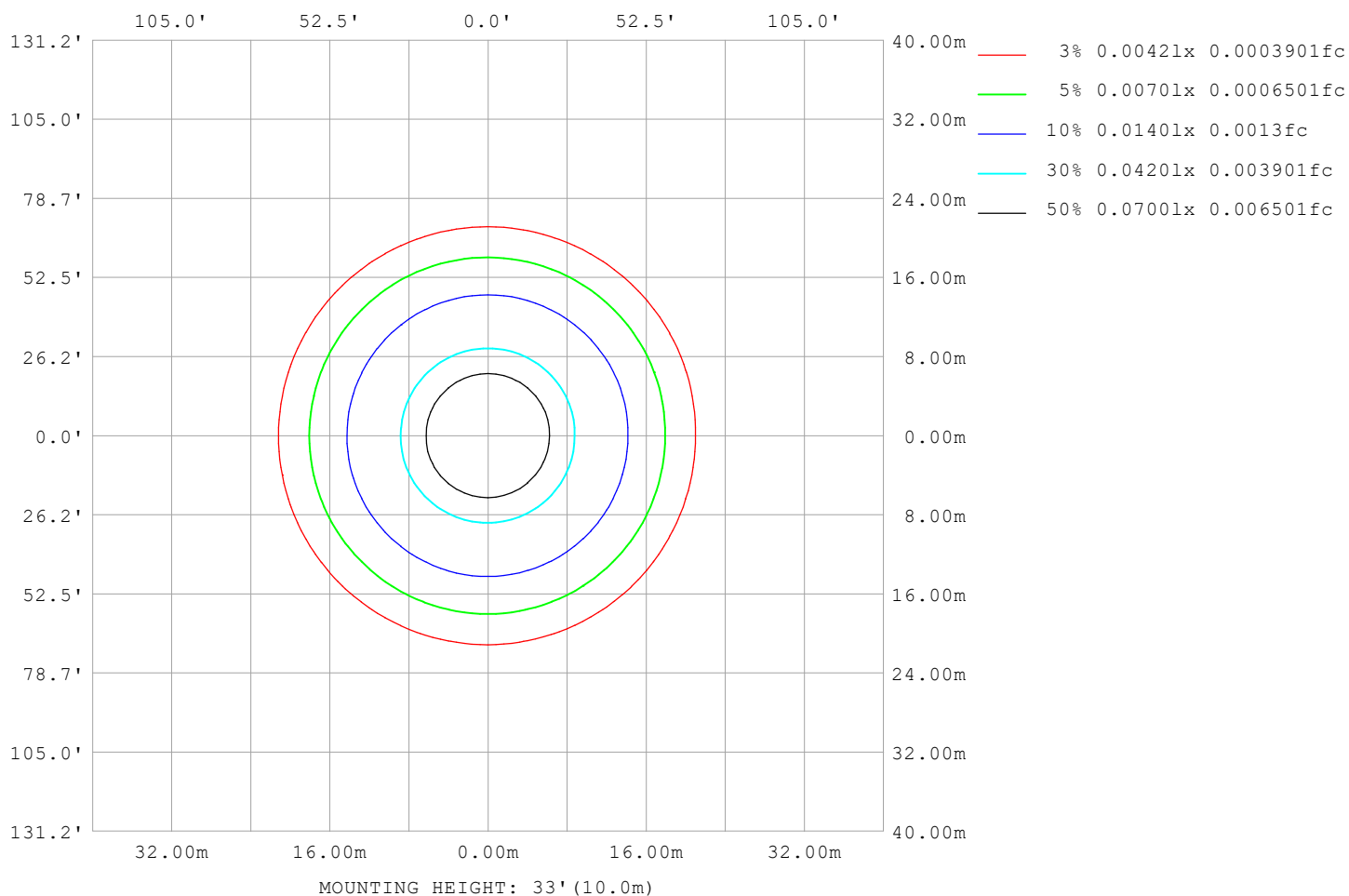
Note:The Curves indicate the illuminated area and the average illumination when the luminaire is at different distance.

C Range: 0 - 360DEG
C Interval: 22.5DEG
Test Speed: HIGH
Temperature:25.3℃
Operators:Cloud
Test Date:2024-10-28

γ Range: 0 - 180DEG
γ Interval: 1.0DEG
Test System:EVERFINE GO-2000B_V1 SYSTEM V2.00.488
Humidity:65.0%
Test Distance:6.360m [K=1.0000]
Remarks: RED

ISOLUX DIAGRAM

Test:U:24.00V I:0.1426A P:3.422W PF:1.000 Freq:0Hz Lamp Flux:43.1128x1 lm		
NAME: SF16-24V-5050-72-RGBW-80	TYPE:	WEIGHT:
SPEC.:	DIM.: Length=1m	SERIAL No.:
MFR.:	SUR.:	Shielding Angle:



C Range: 0 - 360DEG
C Interval: 22.5DEG
Test Speed: HIGH
Temperature: 25.3°C
Operators: Cloud
Test Date: 2024-10-28

γ Range: 0 - 180DEG
γ Interval: 1.0DEG
Test System: EVERFINE GO-2000B_V1 SYSTEM V2.00.488
Humidity: 65.0%
Test Distance: 6.360m [K=1.0000]
Remarks: RED

LED Avg.L Report

Test:U:24.00V I:0.1426A P:3.422W PF:1.000 Freq:0Hz Lamp Flux:43.1128x1 lm		
NAME: SF16-24V-5050-72-RGBW-80	TYPE:	WEIGHT:
SPEC.:	DIM.: Length=1m	SERIAL No.:
MFR.:	SUR.:	Shielding Angle:

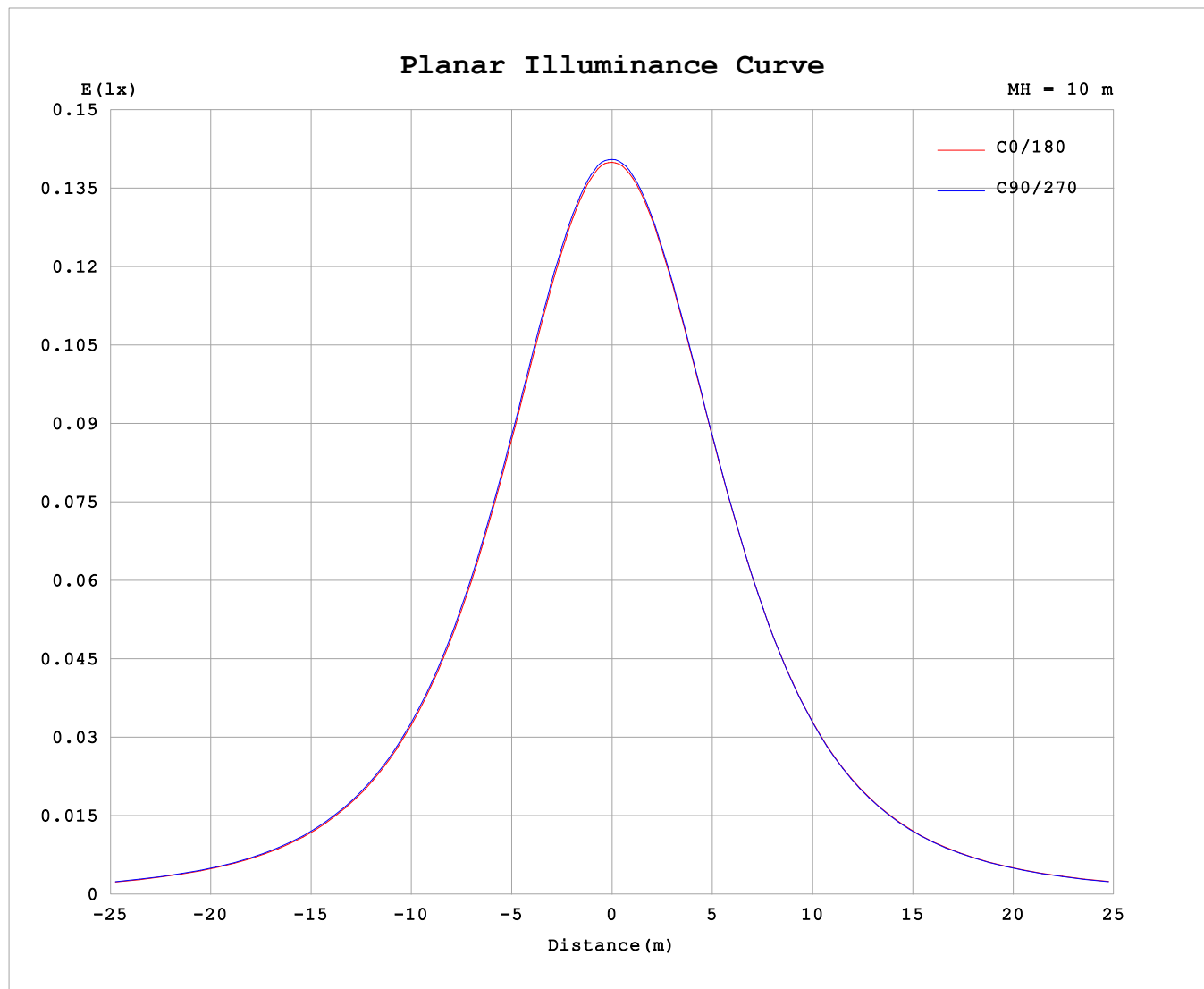
AvgL	cd/m2
L_0~180 (65) av	734
L_0~180 (75) av	729
L_0~180 (85) av	823
L_90~270 (65) av	736
L_90~270 (75) av	726
L_90~270 (85) av	759
L_45 (65) av	735
L_45 (75) av	729
L_45 (85) av	788

Standard: GB/T 29293-2012

C Range: 0 - 360DEG
C Interval: 22.5DEG
Test Speed: HIGH
Temperature:25.3℃
Operators:Cloud
Test Date:2024-10-28

γ Range: 0 - 180DEG
γ Interval: 1.0DEG
Test System:EVERFINE GO-2000B_V1 SYSTEM V2.00.488
Humidity:65.0%
Test Distance:6.360m [K=1.0000]
Remarks: RED

Planar Illuminance Curve



C Range: 0 - 360DEG
C Interval: 22.5DEG
Test Speed: HIGH
Temperature: 25.3 °C
Operators: Cloud
Test Date: 2024-10-28

γ Range: 0 - 180DEG
 γ Interval: 1.0DEG
Test System: EVERFINE GO-2000B_V1 SYSTEM V2.00.488
Humidity: 65.0%
Test Distance: 6.360m [K=1.0000]
Remarks: RED

LUMINOUS DISTRIBUTION INTENSITY DATA

Test:U:24.00V I:0.1426A P:3.422W PF:1.000 Freq:0Hz Lamp Flux:43.1128x1 lm																	
NAME: SF16-24V-5050-72-RGBW-80									TYPE:						WEIGHT:		
SPEC.:									DIM.: Length=1m						SERIAL No.:		
MFR.:									SUR.:						Shielding Angle:		

Table--1

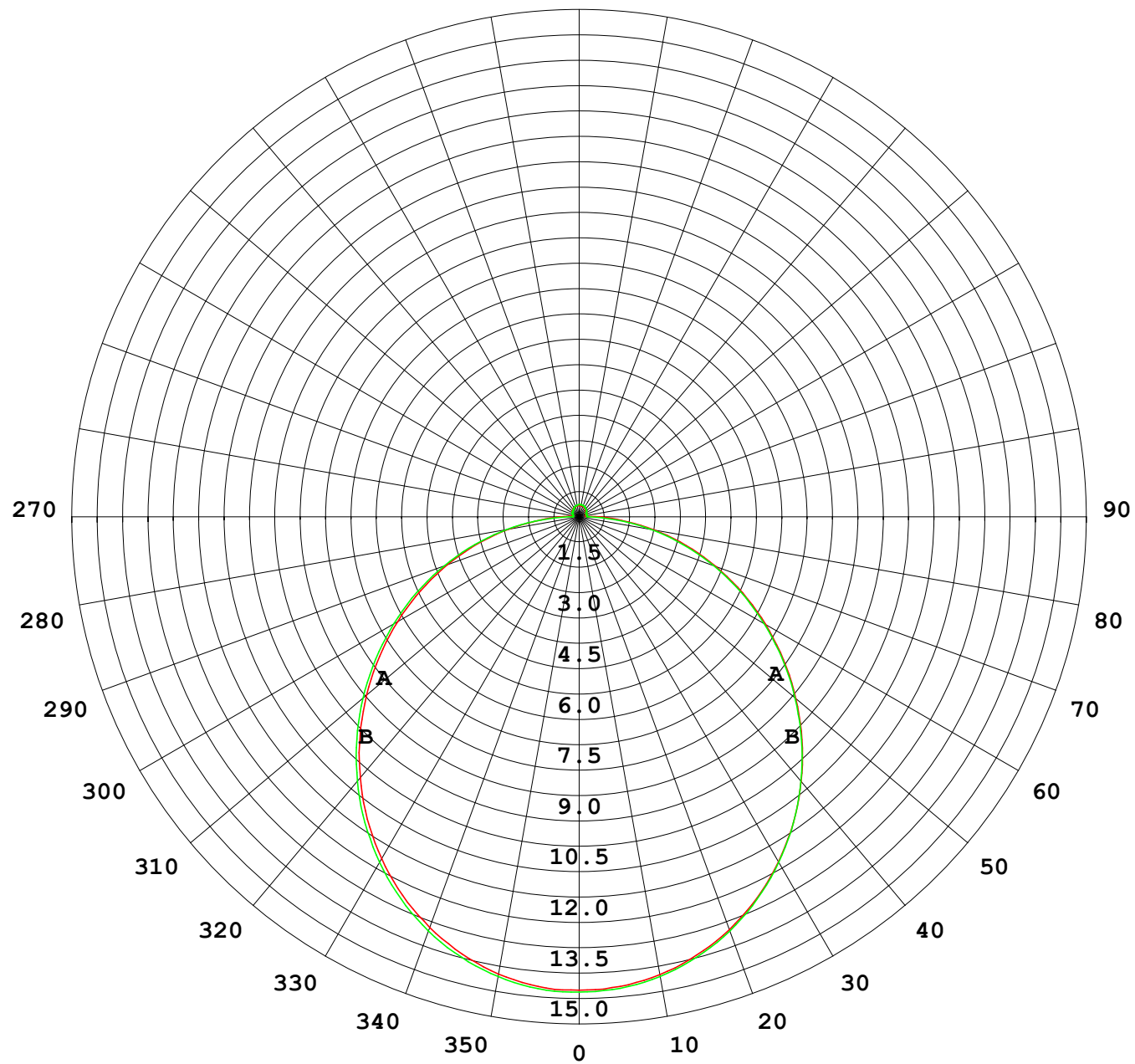
UNIT: cd

C (DEG) γ (DEG)	0	22.5	45	67.5	90	112.5	135	157.5	180	202.5	225	247.5	270	292.5	315	337.5			
0	14.0	14.0	14.0	14.0	14.0	14.0	14.0	14.0	14.0	14.0	14.0	14.0	14.0	14.0	14.0	14.0			
5	14.0	14.0	14.0	14.0	14.0	14.0	14.0	14.0	14.0	14.0	14.0	14.0	14.0	14.0	14.0	14.0			
10	13.8	13.8	13.8	13.8	13.8	13.8	13.8	13.8	13.8	13.8	13.8	13.8	13.8	13.8	13.8	13.8			
15	13.4	13.4	13.5	13.4	13.5	13.5	13.5	13.5	13.5	13.5	13.5	13.5	13.5	13.5	13.5	13.5			
20	13.0	13.0	13.0	13.0	13.0	13.0	13.0	13.0	13.0	13.1	13.0	13.1	13.0	13.0	13.0	13.0			
25	12.4	12.4	12.4	12.4	12.5	12.5	12.5	12.5	12.5	12.5	12.5	12.5	12.5	12.5	12.4	12.4			
30	11.7	11.7	11.8	11.8	11.8	11.8	11.8	11.8	11.8	11.9	11.8	11.8	11.8	11.8	11.8	11.8			
35	11.0	11.0	11.0	11.0	11.0	11.1	11.1	11.1	11.1	11.1	11.1	11.1	11.0	11.0	11.0	11.0			
40	10.1	10.1	10.2	10.2	10.2	10.2	10.2	10.2	10.3	10.3	10.2	10.2	10.2	10.2	10.2	10.2			
45	9.20	9.22	9.24	9.26	9.30	9.31	9.34	9.34	9.35	9.37	9.33	9.32	9.29	9.28	9.27	9.25			
50	8.24	8.25	8.29	8.31	8.34	8.35	8.37	8.38	8.40	8.40	8.37	8.36	8.33	8.33	8.31	8.29			
55	7.23	7.25	7.29	7.32	7.35	7.36	7.37	7.38	7.41	7.41	7.38	7.36	7.33	7.33	7.31	7.29			
60	6.21	6.23	6.27	6.30	6.33	6.34	6.35	6.36	6.38	6.39	6.36	6.34	6.31	6.30	6.29	6.27			
65	5.18	5.20	5.24	5.27	5.30	5.30	5.31	5.32	5.36	5.35	5.33	5.30	5.28	5.26	5.25	5.24			
70	4.15	4.17	4.19	4.22	4.24	4.25	4.27	4.28	4.32	4.31	4.28	4.26	4.23	4.23	4.22	4.20			
75	3.13	3.14	3.17	3.19	3.20	3.21	3.24	3.25	3.29	3.28	3.25	3.22	3.19	3.18	3.18	3.17			
80	2.12	2.13	2.14	2.15	2.17	2.17	2.21	2.23	2.26	2.26	2.22	2.18	2.16	2.15	2.15	2.15			
85	1.16	1.14	1.13	1.13	1.13	1.15	1.19	1.24	1.28	1.27	1.20	1.14	1.12	1.12	1.15	1.17			
90	0.55	0.50	0.43	0.30	0.21	0.31	0.46	0.54	0.58	0.57	0.46	0.34	0.24	0.36	0.46	0.54			
95	0.21	0.19	0.20	0.21	0.19	0.22	0.20	0.20	0.19	0.22	0.23	0.25	0.23	0.25	0.29	0.22			
100	0.21	0.21	0.20	0.21	0.19	0.21	0.20	0.21	0.19	0.21	0.24	0.25	0.23	0.25	0.28	0.22			
105	0.21	0.22	0.20	0.22	0.20	0.22	0.20	0.22	0.20	0.22	0.25	0.25	0.23	0.24	0.26	0.22			
110	0.22	0.24	0.21	0.24	0.21	0.24	0.21	0.23	0.22	0.22	0.25	0.25	0.23	0.24	0.25	0.22			
115	0.23	0.25	0.23	0.25	0.23	0.25	0.22	0.25	0.23	0.23	0.26	0.25	0.23	0.24	0.24	0.23			
120	0.25	0.26	0.23	0.26	0.24	0.26	0.24	0.26	0.24	0.24	0.27	0.25	0.24	0.24	0.24	0.24			
125	0.26	0.28	0.24	0.27	0.25	0.28	0.25	0.27	0.25	0.24	0.28	0.25	0.26	0.26	0.24	0.24			
130	0.27	0.28	0.25	0.28	0.26	0.29	0.26	0.29	0.26	0.25	0.29	0.26	0.28	0.27	0.26	0.25			
135	0.28	0.29	0.27	0.29	0.27	0.30	0.28	0.30	0.28	0.27	0.30	0.29	0.30	0.28	0.28	0.26			
140	0.29	0.30	0.27	0.30	0.28	0.31	0.29	0.31	0.29	0.28	0.31	0.29	0.31	0.29	0.31	0.28			
145	0.30	0.31	0.28	0.31	0.29	0.32	0.30	0.32	0.30	0.29	0.32	0.30	0.32	0.30	0.32	0.29			
150	0.31	0.31	0.29	0.32	0.31	0.34	0.31	0.34	0.32	0.30	0.33	0.31	0.33	0.31	0.33	0.30			
155	0.32	0.32	0.30	0.34	0.32	0.35	0.33	0.35	0.33	0.31	0.34	0.32	0.35	0.32	0.34	0.32			
160	0.34	0.34	0.33	0.36	0.33	0.36	0.34	0.36	0.34	0.33	0.35	0.33	0.35	0.34	0.35	0.33			
165	0.34	0.34	0.34	0.36	0.35	0.36	0.34	0.36	0.34	0.33	0.36	0.34	0.36	0.34	0.36	0.34			
170	0.34	0.35	0.35	0.36	0.35	0.36	0.35	0.36	0.34	0.34	0.36	0.35	0.36	0.35	0.36	0.35			
175	0.34	0.36	0.36	0.36	0.36	0.36	0.36	0.36	0.34	0.35	0.36	0.36	0.37	0.36	0.36	0.36			
180	0.34	0.36	0.36	0.36	0.36	0.36	0.37	0.37	0.34	0.36	0.36	0.36	0.37	0.36	0.36	0.36			

C Range: 0 - 360DEG
C Interval: 22.5DEG
Test Speed: HIGH
Temperature:25.3℃
Operators:Cloud
Test Date:2024-10-28

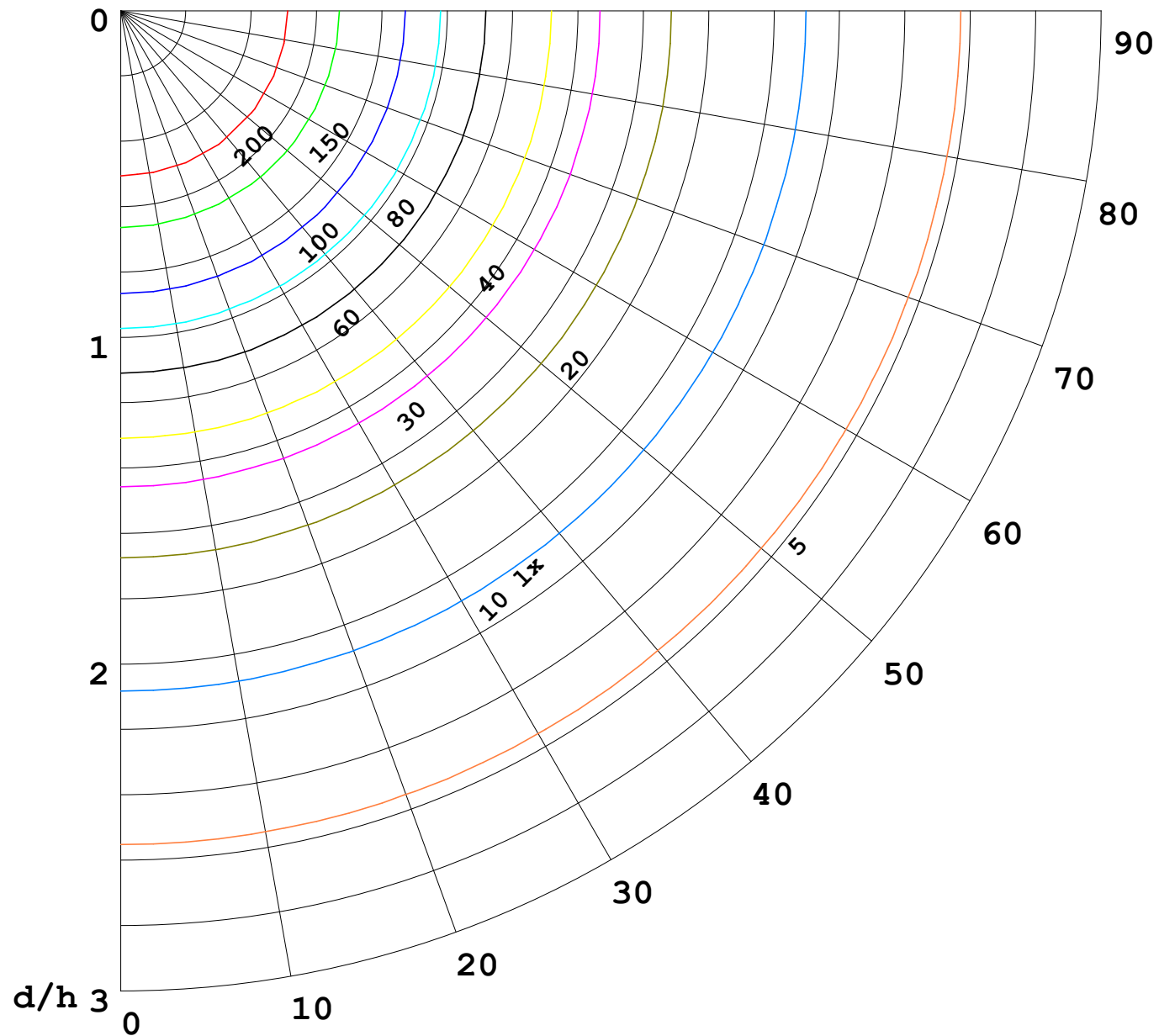
γ Range: 0 - 180DEG
γ Interval: 1.0DEG
Test System:EVERFINE GO-2000B_V1 SYSTEM V2.00.488
Humidity:65.0%
Test Distance:6.360m [K=1.0000]
Remarks: RED

I (cd)



1000 lm

$\kappa = 1$



F = 1000 lm
 K = 0.7
 Hcc = 0.8 m
 Hfc = 0.0 m
 Eave = 100 lx

	Pcc	Pw	Pfc
—————	70	50	30
—————	50	30	20

