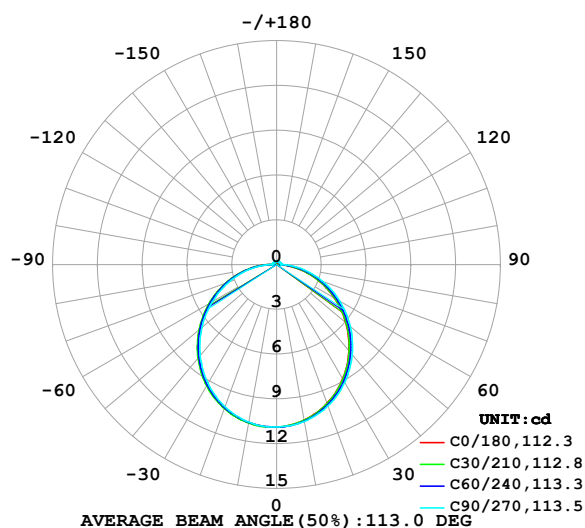


## LUMINAIRE PHOTOMETRIC TEST REPORT

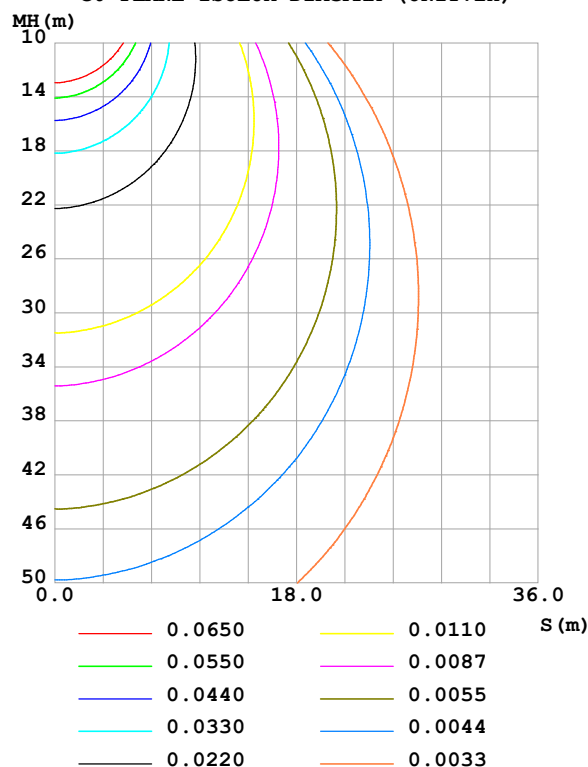
Test:U:24.00V I:0.1770A P:4.248W PF:1.000 Freq:0Hz Lamp Flux:33.5469x1 lm		
NAME: SF16-24V-5050-72-RGBW(2700K)-80-B	TYPE:	WEIGHT:
SPEC.:	DIM.: Length=1m	SERIAL No.:
MFR.: OLympia lighting	SUR.:	Shielding Angle:

DATA OF LAMP		PHOTOMETRIC DATA				Eff: 7.90 lm/W
MODEL	5050	I <sub>max</sub> (cd)	10.89	S/MH(C0/180)	1.28	
NOMINAL POWER(W)		LOR(%)	100.0	S/MH(C90/270)	1.26	
RATED VOLTAGE(V)	24	TOTAL FLUX(lm)	33.547	η UP,DN(C0-180)	2.1,47.2	
NOMINAL FLUX(lm)	33.5469	CIE CLASS	DIRECT	η UP,DN(C180-360)	2.1,48.6	
LAMPS INSIDE	1	η up (%)	4.2	CIBSE SHR NOM	1.25	
TEST VOLTAGE(V)		η down (%)	95.8	CIBSE SHR MAX	1.35	

LUMINOUS INTENSITY DISTRIBUTION DIAGRAM



C0 PLANE ISOLUX DIAGRAM (UNIT:lx)



C Range: 0 - 360DEG  
C Interval: 30.0DEG  
Test Speed: HIGH  
Temperature:25.3℃  
Operators:  
Test Date:2025-02-25

γ Range: 0 - 180DEG  
γ Interval: 1.0DEG  
Test System:EVERFINE GO-2000B\_V1 SYSTEM V2.00.488  
Humidity:65.0%  
Test Distance:6.360m [K=1.0000]  
Remarks:

## ZONAL FLUX DIAGRAM

## ZONAL FLUX DIAGRAM:

$\gamma$	C0	C45	C90	C135	C180	C225	C270	C315	$\gamma$	$\Phi$ zone	$\Phi$ total	%lum, lamp
10	10.59	10.62	10.67	10.75	10.75	10.76	10.72	10.62	0- 10	1.030	1.030	3.07,3.07
20	9.890	9.949	10.07	10.22	10.23	10.23	10.14	9.968	10- 20	2.945	3.974	11.8,11.8
30	8.856	8.943	9.129	9.321	9.352	9.347	9.194	8.969	20- 30	4.450	8.424	25.1,25.1
40	7.545	7.658	7.892	8.123	8.167	8.150	7.973	7.686	30- 40	5.349	13.77	41.1,41.1
50	6.050	6.183	6.445	6.705	6.752	6.737	6.529	6.212	40- 50	5.552	19.33	57.6,57.6
60	4.462	4.595	4.888	5.149	5.202	5.188	4.978	4.639	50- 60	5.079	24.40	72.7,72.7
70	2.860	2.990	3.283	3.545	3.603	3.591	3.386	3.045	60- 70	4.048	28.45	84.8,84.8
80	1.281	1.409	1.720	1.953	2.001	2.008	1.829	1.468	70- 80	2.633	31.08	92.7,92.7
90	0.2541	0.2513	0.2975	0.4851	0.5723	0.5239	0.3098	0.2916	80- 90	1.065	32.15	95.8,95.8
100	0.1383	0.2007	0.2917	0.2122	0.1325	0.2108	0.3004	0.2194	90-100	0.2665	32.42	96.6,96.6
110	0.1469	0.2079	0.2744	0.2165	0.1469	0.2007	0.2831	0.2107	100-110	0.2237	32.64	97.3,97.3
120	0.1670	0.2165	0.2570	0.2223	0.1642	0.1992	0.2571	0.2064	110-120	0.2086	32.85	97.9,97.9
130	0.1844	0.2224	0.2454	0.2266	0.1787	0.1992	0.2426	0.2064	120-130	0.1898	33.04	98.5,98.5
140	0.1988	0.2296	0.2397	0.2295	0.2017	0.2064	0.2282	0.2150	130-140	0.1670	33.21	99,99
150	0.2132	0.2367	0.2426	0.2367	0.2190	0.2180	0.2282	0.2223	140-150	0.1398	33.35	99.4,99.4
160	0.2305	0.2425	0.2542	0.2439	0.2392	0.2396	0.2282	0.2367	150-160	0.1081	33.45	99.7,99.7
170	0.2449	0.2483	0.2599	0.2526	0.2507	0.2468	0.2483	0.2483	160-170	0.0694	33.52	99.9,99.9
180	0.2507	0.2555	0.2571	0.2569	0.2507	0.2541	0.2571	0.2555	170-180	0.0240	33.55	100,100
DEG	LUMINOUS INTENSITY:cd									UNIT:lm		

Conical surface Flux(90deg): 16.568 lm

%lum = 49.4%

%lamp = 49.4%

Conical surface Flux(130deg): 26.585 lm

%lum = 79.2%

%lamp = 79.2%

C Range: 0 - 360DEG  
 C Interval: 30.0DEG  
 Test Speed: HIGH  
 Temperature:25.3℃  
 Operators:  
 Test Date:2025-02-25

$\gamma$  Range: 0 - 180DEG  
 $\gamma$  Interval: 1.0DEG  
 Test System:EVERFINE GO-2000B\_V1 SYSTEM V2.00.488  
 Humidity:65.0%  
 Test Distance:6.360m [K=1.0000]  
 Remarks:

LUMINANCE LIMITATION CURVES

Test:U:24.00V I:0.1770A P:4.248W PF:1.000 Freq:0Hz Lamp Flux:33.5469x1 lm		
NAME: SF16-24V-5050-72-RGBW(2700K)-80-B	TYPE:	WEIGHT:
SPEC.:	DIM.: Length=1m	SERIAL No.:
MFR.: OLympia lighting	SUR.:	Shielding Angle:



LUMINANCE cd/(m2)		
G (DEG)	C0/180	C90/270
85	446	680
80	462	619
75	499	602
70	524	599
65	542	603
60	559	611
55	575	618
50	589	626
45	603	634

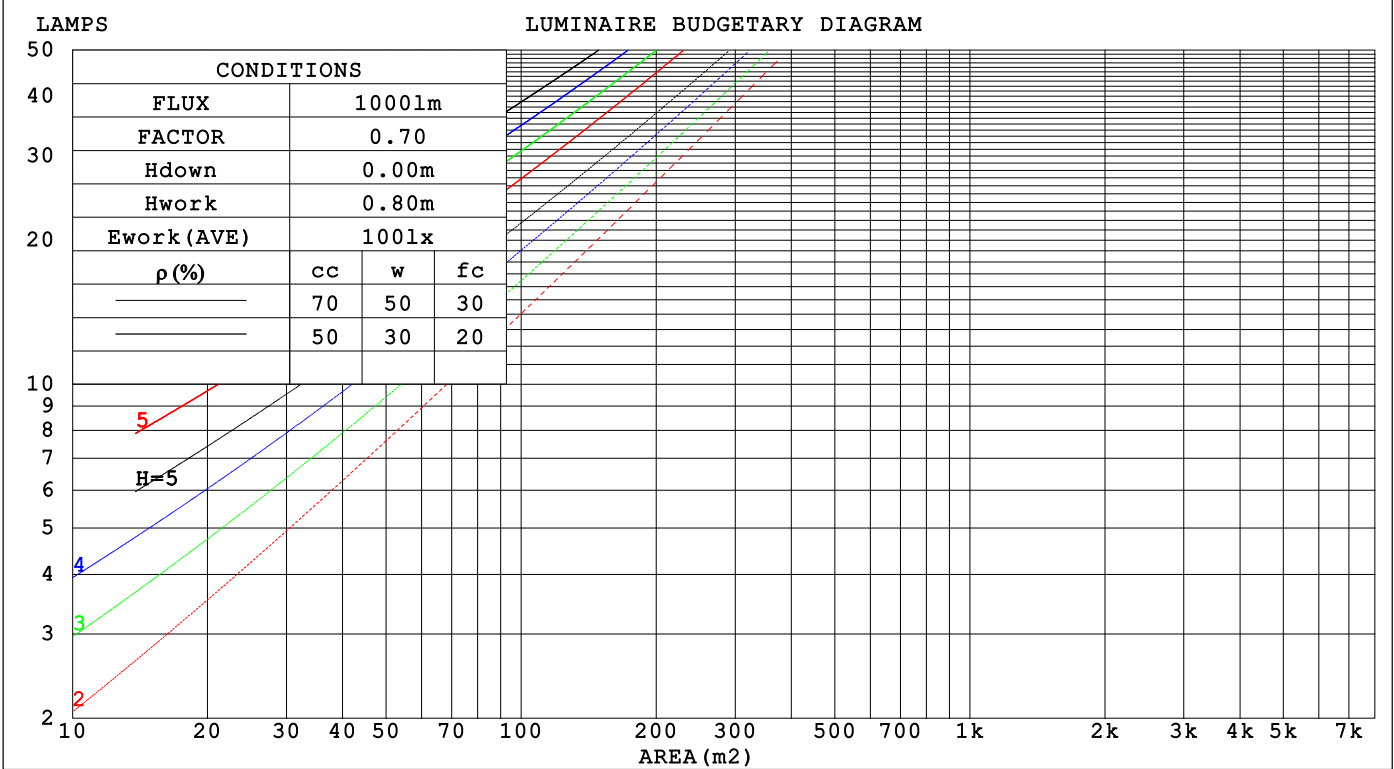
C Range: 0 - 360DEG  
C Interval: 30.0DEG  
Test Speed: HIGH  
Temperature:25.3℃  
Operators:  
Test Date:2025-02-25

γ Range: 0 - 180DEG  
γ Interval: 1.0DEG  
Test System:EVERFINE GO-2000B\_V1 SYSTEM V2.00.488  
Humidity:65.0%  
Test Distance:6.360m [K=1.0000]  
Remarks:

CU AND LUMINAIRE BUDGETARY ESTIMATE DIAGRAM

Test:U:24.00V I:0.1770A P:4.248W PF:1.000 Freq:0Hz		
Lamp Flux:33.5469x1 lm		
NAME: SF16-24V-5050-72-RGBW(2700K)-80-B	TYPE:	WEIGHT:
SPEC.:	DIM.: Length=1m	SERIAL No.:
MFR.: OLYMPIA lighting	SUR.:	Shielding Angle:

pcc	80%			70%			50%			30%			10%			0
p <sub>w</sub>	50%	30%	10%	50%	30%	10%	50%	30%	10%	50%	30%	10%	50%	30%	10%	0
p <sub>fc</sub>	20%			20%			20%			20%			20%			0
RCR	RCR:Room Cavity Ratio															



C Range: 0 - 360DEG  
C Interval: 30.0DEG  
Test Speed: HIGH  
Temperature:25.3℃  
Operators:  
Test Date:2025-02-25

γ Range: 0 - 180DEG  
γ Interval: 1.0DEG  
Test System:EVERFINE GO-2000B\_V1 SYSTEM V2.00.488  
Humidity:65.0%  
Test Distance:6.360m [K=1.0000]  
Remarks:

## WEC AND CCEC

Test:U:24.00V I:0.1770A P:4.248W PF:1.000 Freq:0Hz Lamp Flux:33.5469x1 lm		
NAME: SF16-24V-5050-72-RGBW(2700K)-80-B	TYPE:	WEIGHT:
SPEC.:	DIM.: Length=1m	SERIAL No.:
MFR.: OLYMPIA lighting	SUR.:	Shielding Angle:

pcc	80%			70%			50%			30%			10%			0														
pw	50%	30%	10%	50%	30%	10%	50%	30%	10%	50%	30%	10%	50%	30%	10%	0														
pfc	20%			20%			20%			20%			20%			0														
RCR	RCR:Room Cavity Ratio															Wall Exitance Coefficients(WEC)														
0.0																														
1.0	.328	.187	.059	.320	.182	.058	.304	.174	.056	.290	.167	.054	.276	.160	.052															
2.0	.302	.165	.051	.294	.162	.050	.280	.156	.048	.268	.150	.047	.256	.145	.046															
3.0	.276	.147	.044	.270	.144	.043	.257	.139	.042	.246	.135	.041	.235	.130	.040															
4.0	.253	.132	.039	.247	.129	.038	.236	.125	.037	.226	.121	.037	.216	.118	.036															
5.0	.233	.119	.034	.228	.117	.034	.218	.113	.033	.209	.110	.033	.200	.107	.032															
6.0	.216	.108	.031	.211	.106	.031	.202	.103	.030	.193	.101	.030	.186	.098	.029															
7.0	.200	.099	.028	.196	.098	.028	.188	.095	.027	.180	.092	.027	.173	.090	.026															
8.0	.187	.091	.026	.183	.090	.025	.175	.088	.025	.169	.085	.025	.162	.083	.024															
9.0	.175	.084	.024	.171	.083	.023	.165	.081	.023	.158	.079	.023	.152	.077	.022															
10.0	.164	.079	.022	.161	.078	.022	.155	.076	.021	.149	.074	.021	.144	.072	.021															

pcc	80%			70%			50%			30%			10%			0
pw	50%	30%	10%	50%	30%	10%	50%	30%	10%	50%	30%	10%	50%	30%	10%	0
pfc	20%			20%			20%			20%			20%			0
RCR	RCR:Room Cavity Ratio						Ceiling Cavity Exitance Coefficients (CCEC)									
0.0	.222	.222	.222	.190	.190	.190	.130	.130	.130	.074	.074	.074	.024	.024	.024	
1.0	.214	.188	.165	.183	.161	.142	.125	.111	.098	.072	.064	.057	.023	.021	.018	
2.0	.206	.164	.129	.176	.141	.112	.121	.098	.078	.070	.057	.046	.022	.018	.015	
3.0	.198	.147	.106	.170	.127	.092	.117	.088	.064	.067	.051	.038	.022	.017	.012	
4.0	.190	.134	.090	.163	.115	.078	.112	.080	.055	.065	.047	.033	.021	.015	.011	
5.0	.183	.123	.079	.157	.107	.069	.108	.075	.049	.063	.044	.029	.020	.014	.010	
6.0	.176	.115	.072	.151	.100	.062	.104	.070	.044	.060	.041	.026	.019	.013	.009	
7.0	.169	.108	.066	.145	.094	.057	.100	.066	.041	.058	.039	.024	.019	.013	.008	
8.0	.162	.102	.061	.140	.089	.054	.097	.062	.038	.056	.037	.023	.018	.012	.007	
9.0	.156	.098	.058	.134	.085	.051	.093	.060	.036	.054	.035	.021	.018	.012	.007	
10.0	.150	.093	.055	.130	.081	.048	.090	.057	.034	.052	.034	.020	.017	.011	.007	

C Range: 0 - 360DEG  
C Interval: 30.0DEG  
Test Speed: HIGH  
Temperature:25.3℃  
Operators:  
Test Date:2025-02-25

γ Range: 0 - 180DEG  
γ Interval: 1.0DEG  
Test System:EVERFINE GO-2000B\_V1 SYSTEM V2.00.488  
Humidity:65.0%  
Test Distance:6.360m [K=1.0000]  
Remarks:

UGR(Unified Glare Rating) Table

Test:U:24.00V I:0.1770A P:4.248W PF:1.000 Freq:0Hz Lamp Flux:33.5469x1 lm											
NAME: SF16-24V-5050-72-RGBW(2700K)-80-B						TYPE:		WEIGHT:			
SPEC.:						DIM.: Length=1m		SERIAL No.:			
MFR.: OLympia lighting						SUR.:		Shielding Angle:			
ceiling/cavity	0.7	0.7	0.5	0.5	0.3	0.7	0.7	0.5	0.5	0.3	
walls	0.5	0.3	0.5	0.3	0.3	0.5	0.3	0.5	0.3	0.3	
working plane	0.2	0.2	0.2	0.2	0.2	0.2	0.2	0.2	0.2	0.2	
Room dimensions		Viewed crosswise					Viewed endwise				
x = 2H y = 2H	2H	22.2	23.7	22.6	24.0	24.3	22.6	24.1	22.9	24.3	24.6
	3H	23.8	25.1	24.1	25.5	25.8	24.3	25.6	24.6	26.0	26.3
	4H	24.4	25.7	24.8	26.1	26.4	25.0	26.3	25.4	26.7	27.0
	6H	24.9	26.1	25.3	26.5	26.9	25.7	26.9	26.1	27.3	27.6
	8H	25.1	26.3	25.5	26.6	27.0	26.0	27.2	26.4	27.5	27.9
	12H	25.2	26.3	25.6	26.7	27.1	26.2	27.3	26.6	27.7	28.1
4H	2H	22.9	24.2	23.2	24.5	24.8	23.1	24.4	23.5	24.8	25.1
	3H	24.6	25.7	25.0	26.1	26.5	25.0	26.2	25.4	26.5	26.9
	4H	25.4	26.4	25.8	26.8	27.2	25.9	27.0	26.4	27.4	27.8
	6H	26.0	26.9	26.5	27.3	27.8	26.7	27.7	27.2	28.1	28.5
	8H	26.2	27.1	26.7	27.5	28.0	27.1	27.9	27.6	28.4	28.9
	12H	26.4	27.2	26.8	27.6	28.1	27.4	28.2	27.9	28.6	29.1
8H	4H	25.7	26.6	26.2	27.0	27.5	26.2	27.1	26.7	27.5	28.0
	6H	26.5	27.2	27.0	27.7	28.2	27.2	27.9	27.7	28.4	28.9
	8H	26.8	27.4	27.3	27.9	28.5	27.6	28.3	28.1	28.8	29.3
	12H	27.0	27.6	27.6	28.1	28.7	28.0	28.6	28.6	29.1	29.7
12H	4H	25.7	26.5	26.2	27.0	27.5	26.2	27.0	26.7	27.5	27.9
	6H	26.6	27.2	27.1	27.7	28.2	27.2	27.9	27.7	28.4	28.9
	8H	26.9	27.5	27.4	28.0	28.5	27.7	28.3	28.3	28.8	29.4
Variations with the observer position at spacings(CIE Pub.117):											
S = 1.0H		+ 0.1 / - 0.2					+ 0.1 / - 0.2				
1.5H		+ 0.2 / - 0.3					+ 0.2 / - 0.3				
2.0H		+ 0.1 / - 0.3					+ 0.1 / - 0.2				

CIE Pub.117, 33.55 lm Total Lamp Luminous Flux Correct (8log(F/F0) = -11.8)  
Area: 0.016 m2

C Range: 0 - 360DEG  
C Interval: 30.0DEG  
Test Speed: HIGH  
Temperature:25.3℃  
Operators:  
Test Date:2025-02-25

γ Range: 0 - 180DEG  
γ Interval: 1.0DEG  
Test System:EVERFINE GO-2000B\_V1 SYSTEM V2.00.488  
Humidity:65.0%  
Test Distance:6.360m [K=1.0000]  
Remarks:

## UTILIZATION FACTORS TABLE

Test:U:24.00V I:0.1770A P:4.248W PF:1.000 Freq:0Hz Lamp Flux:33.5469x1 lm		
NAME: SF16-24V-5050-72-RGBW(2700K)-80-B	TYPE:	WEIGHT:
SPEC.:	DIM.: Length=1m	SERIAL No.:
MFR.: OLympia lighting	SUR.:	Shielding Angle:

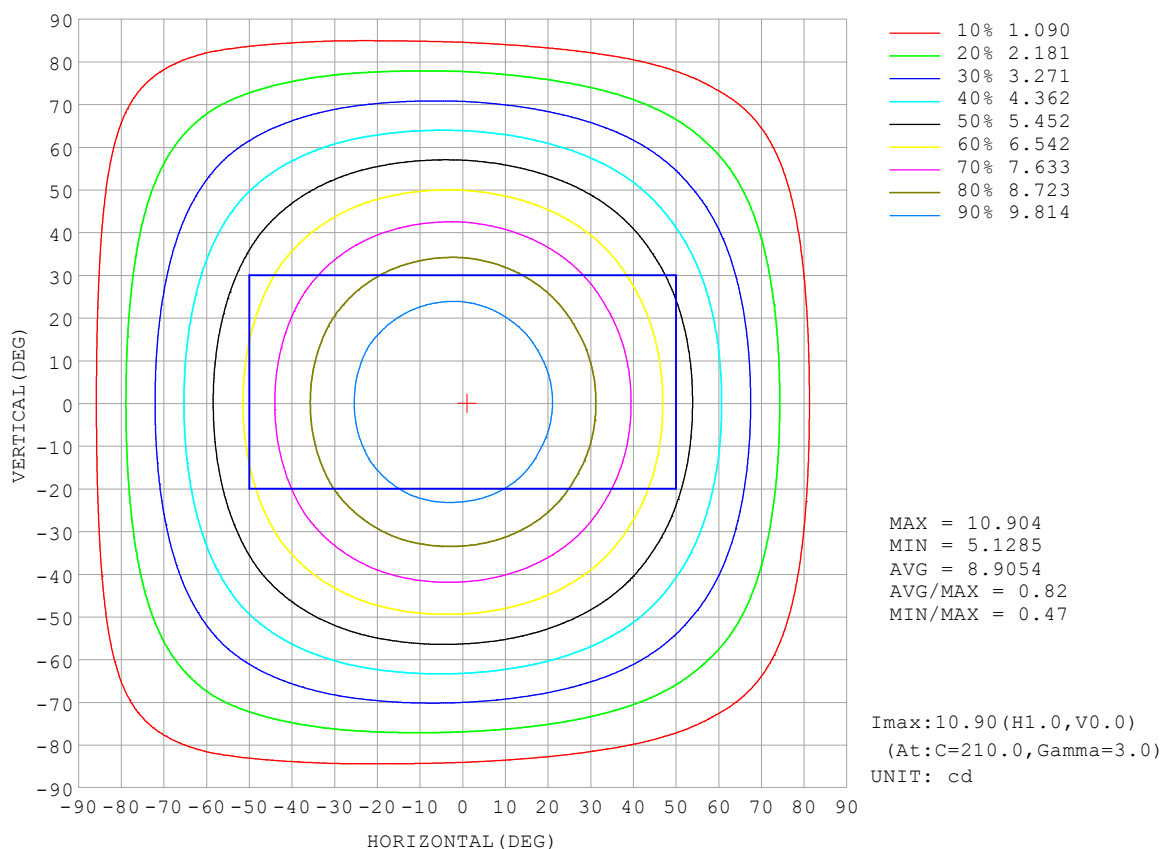
REFLECTANCE										
Ceiling	0.8	0.8	0.8	0.7	0.7	0.7	0.5	0.5	0.5	0
Walls	0.7	0.5	0.3	0.7	0.5	0.3	0.7	0.5	0.3	0
Working plane	0.2	0.2	0.2	0.2	0.2	0.2	0.2	0.2	0.2	0
ROOM INDEX	UTILIZATION FACTORS (PERCENT) $k(RI) \times RCR = 5$									
$k = 0.60$	55	44	37	55	43	37	53	43	36	30
0.80	65	53	46	64	53	46	62	52	45	38
1.00	73	62	54	72	61	54	69	62	53	46
1.25	81	70	62	79	69	62	76	67	61	53
1.50	86	75	68	84	74	67	80	72	66	57
2.00	92	83	77	90	82	76	86	79	74	65
2.50	97	88	82	94	87	81	90	83	78	69
3.00	100	93	87	97	91	85	93	87	83	73
4.00	104	98	93	101	96	91	96	92	88	78
5.00	107	101	97	104	99	95	99	95	91	81
ROOM INDEX	UF (total)									Direct
According to DIN EN 13032-2 2004			Suspended					SHRNOM = 1.25		

C Range: 0 - 360DEG  
 C Interval: 30.0DEG  
 Test Speed: HIGH  
 Temperature: 25.3°C  
 Operators:  
 Test Date: 2025-02-25

γ Range: 0 - 180DEG  
 γ Interval: 1.0DEG  
 Test System: EVERFINE GO-2000B\_V1 SYSTEM V2.00.488  
 Humidity: 65.0%  
 Test Distance: 6.360m [K=1.0000]  
 Remarks:

## ISOCANDELA DIAGRAM

Test:U:24.00V I:0.1770A P:4.248W PF:1.000 Freq:0Hz Lamp Flux:33.5469x1 lm		
NAME: SF16-24V-5050-72-RGBW(2700K)-80-B	TYPE:	WEIGHT:
SPEC.:	DIM.: Length=1m	SERIAL No.:
MFR.: OLympia lighting	SUR.:	Shielding Angle:



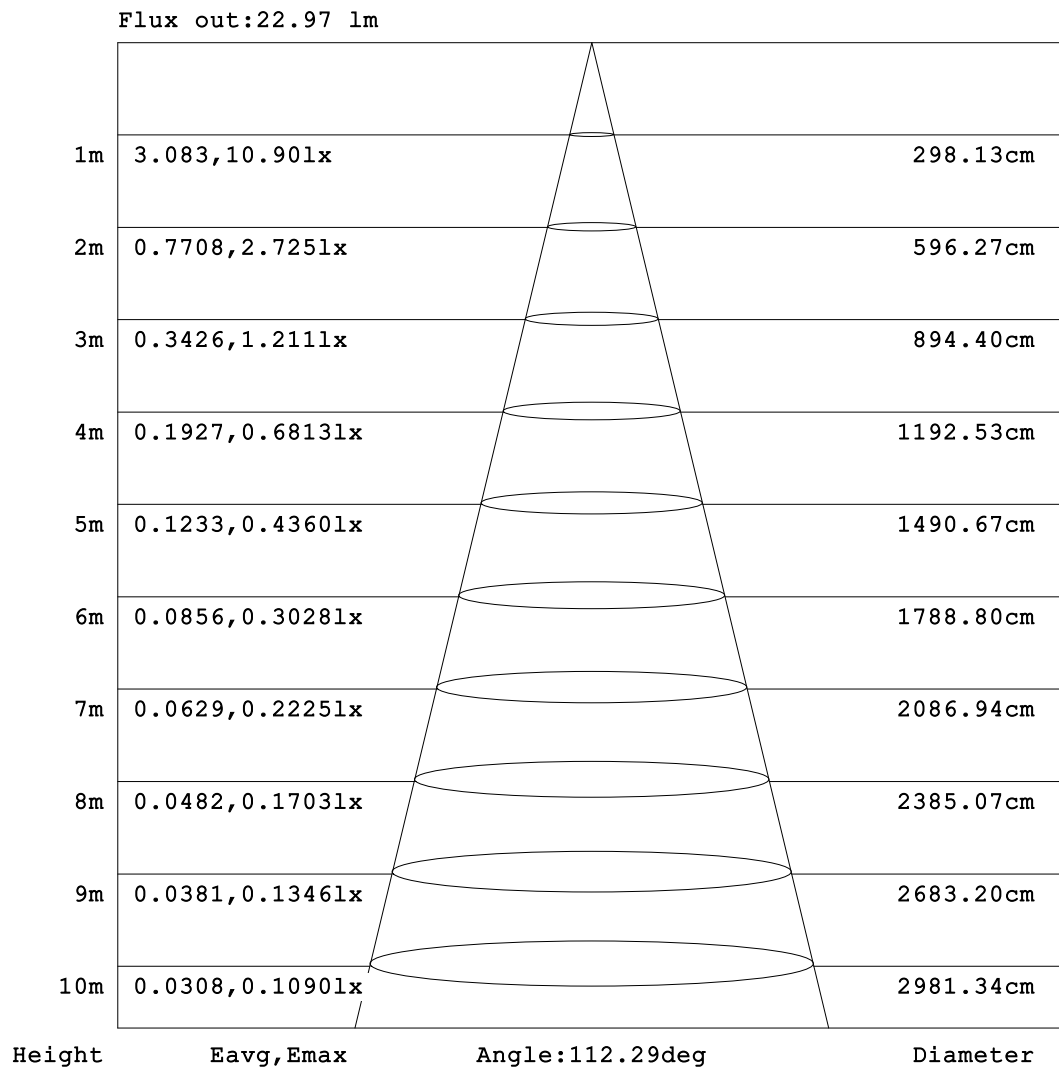
C Range: 0 - 360DEG  
C Interval: 30.0DEG  
Test Speed: HIGH  
Temperature:25.3℃  
Operators:  
Test Date:2025-02-25

γ Range: 0 - 180DEG  
γ Interval: 1.0DEG  
Test System:EVERFINE GO-2000B\_V1 SYSTEM V2.00.488  
Humidity:65.0%  
Test Distance:6.360m [K=1.0000]  
Remarks:



## AAI Figure

Test:U:24.00V I:0.1770A P:4.248W PF:1.000 Freq:0Hz Lamp Flux:33.5469x1 lm		
NAME: SF16-24V-5050-72-RGBW(2700K)-80-B	TYPE:	WEIGHT:
SPEC.:	DIM.: Length=1m	SERIAL No.:
MFR.: OLympia lighting	SUR.:	Shielding Angle:



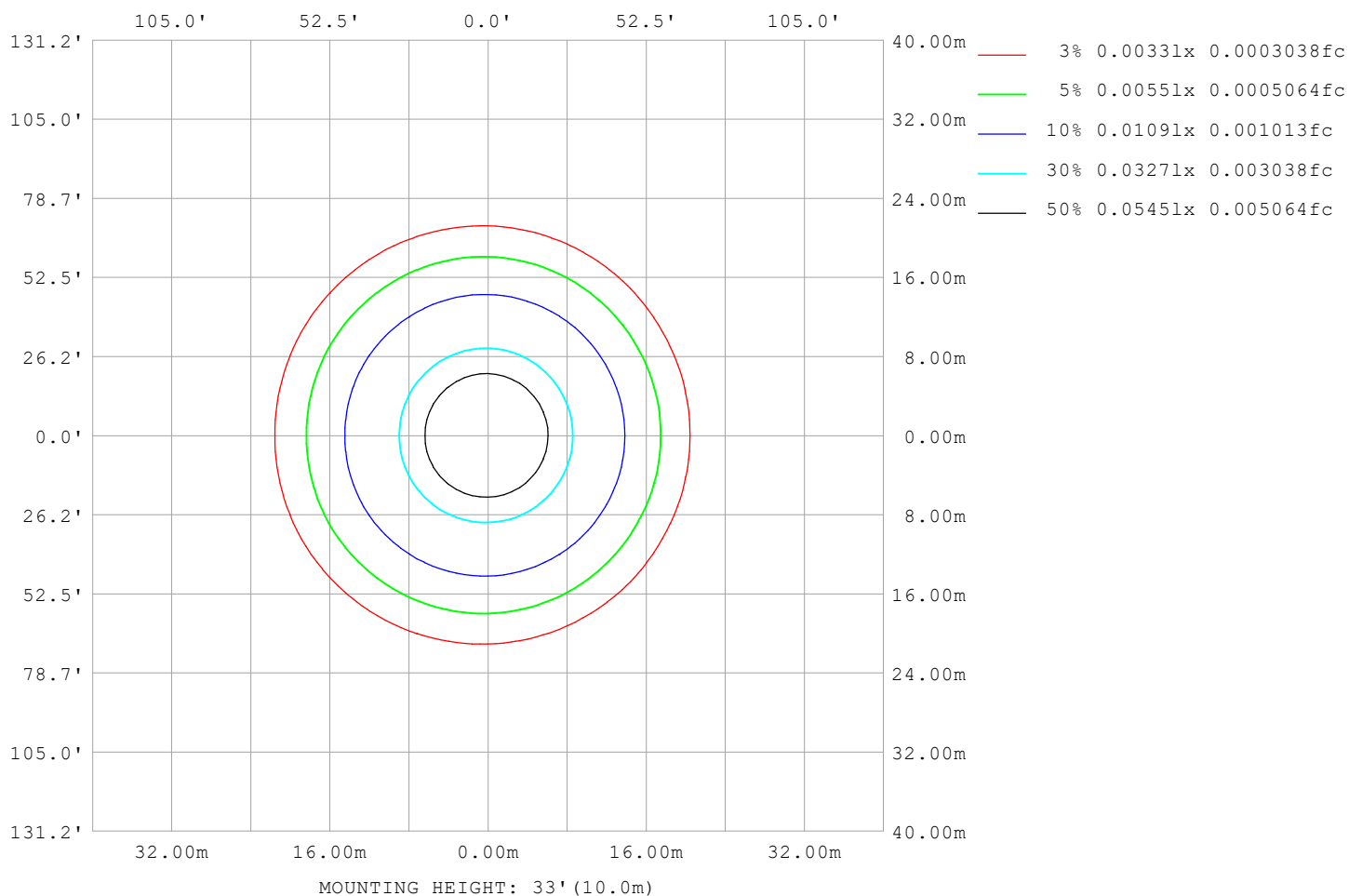
Note:The Curves indicate the illuminated area and the average illumination when the luminaire is at different distance.

C Range: 0 - 360DEG  
C Interval: 30.0DEG  
Test Speed: HIGH  
Temperature:25.3℃  
Operators:  
Test Date:2025-02-25

γ Range: 0 - 180DEG  
γ Interval: 1.0DEG  
Test System:EVERFINE GO-2000B\_V1 SYSTEM V2.00.488  
Humidity:65.0%  
Test Distance:6.360m [K=1.0000]  
Remarks:

## ISOLUX DIAGRAM

Test:U:24.00V I:0.1770A P:4.248W PF:1.000 Freq:0Hz Lamp Flux:33.5469x1 lm		
NAME: SF16-24V-5050-72-RGBW(2700K)-80-B	TYPE:	WEIGHT:
SPEC.:	DIM.: Length=1m	SERIAL No.:
MFR.: OLympia lighting	SUR.:	Shielding Angle:



C Range: 0 - 360DEG  
C Interval: 30.0DEG  
Test Speed: HIGH  
Temperature: 25.3°C  
Operators:  
Test Date: 2025-02-25

γ Range: 0 - 180DEG  
γ Interval: 1.0DEG  
Test System: EVERFINE GO-2000B\_V1 SYSTEM V2.00.488  
Humidity: 65.0%  
Test Distance: 6.360m [K=1.0000]  
Remarks:

## LED Avg.L Report

Test:U:24.00V I:0.1770A P:4.248W PF:1.000 Freq:0Hz Lamp Flux:33.5469x1 lm		
NAME: SF16-24V-5050-72-RGBW(2700K)-80-B	TYPE:	WEIGHT:
SPEC.:	DIM.: Length=1m	SERIAL No.:
MFR.: OLympia lighting	SUR.:	Shielding Angle:

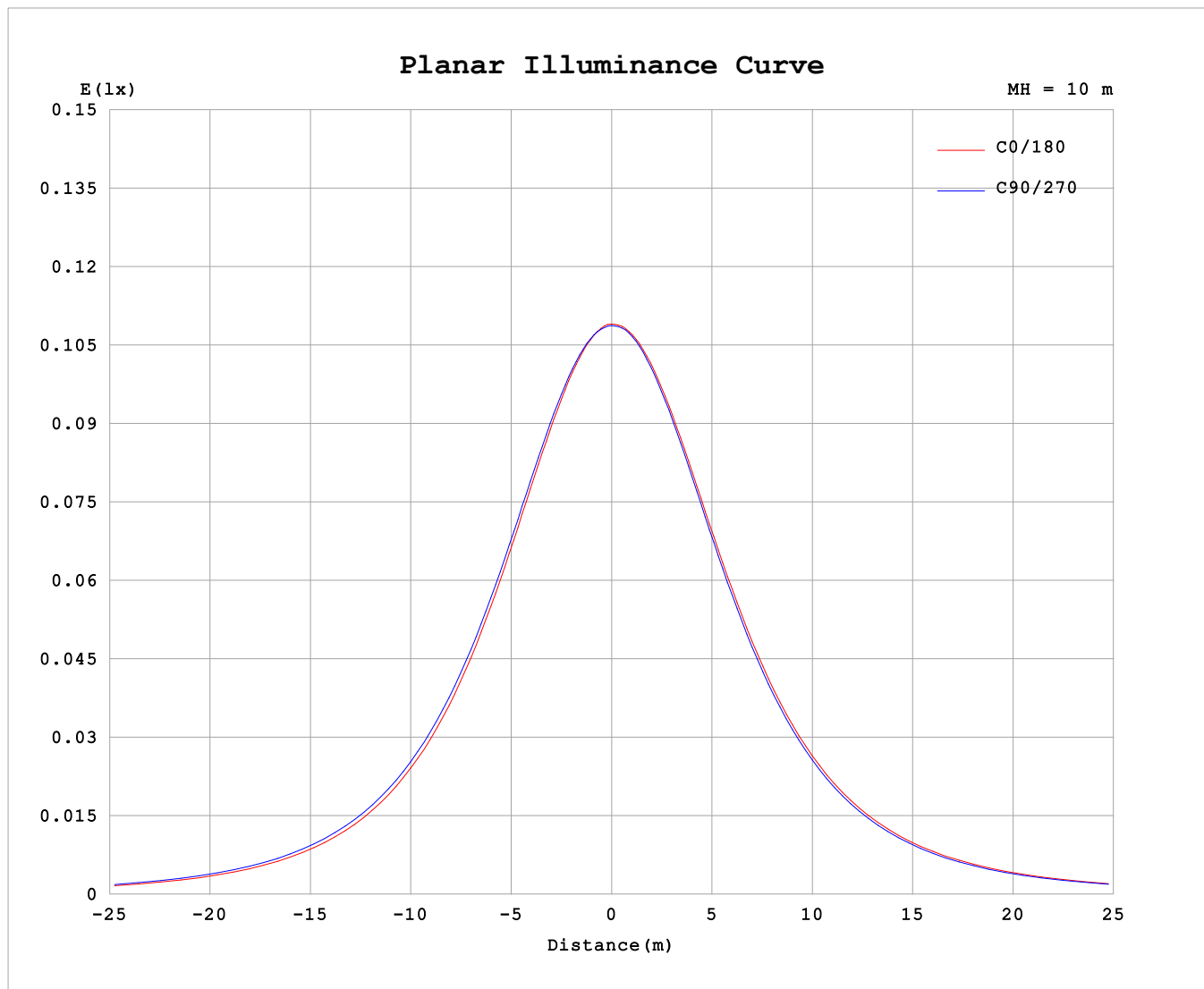
AvgL	cd/m2
L_0~180 (65) av	596
L_0~180 (75) av	587
L_0~180 (85) av	657
L_90~270 (65) av	611
L_90~270 (75) av	615
L_90~270 (85) av	703
L_45 (65) av	605
L_45 (75) av	603
L_45 (85) av	677

Standard: GB/T 29293-2012

C Range: 0 - 360DEG  
C Interval: 30.0DEG  
Test Speed: HIGH  
Temperature:25.3℃  
Operators:  
Test Date:2025-02-25

γ Range: 0 - 180DEG  
γ Interval: 1.0DEG  
Test System:EVERFINE GO-2000B\_V1 SYSTEM V2.00.488  
Humidity:65.0%  
Test Distance:6.360m [K=1.0000]  
Remarks:

## Planar Illuminance Curve



C Range: 0 - 360DEG  
C Interval: 30.0DEG  
Test Speed: HIGH  
Temperature: 25.3 °C  
Operators:  
Test Date: 2025-02-25

$\gamma$  Range: 0 - 180DEG  
 $\gamma$  Interval: 1.0DEG  
Test System: EVERFINE GO-2000B\_V1 SYSTEM V2.00.488  
Humidity: 65.0%  
Test Distance: 6.360m [K=1.0000]  
Remarks:

## LUMINOUS DISTRIBUTION INTENSITY DATA

Test:U:24.00V I:0.1770A P:4.248W PF:1.000 Freq:0Hz Lamp Flux:33.5469x1 lm		
NAME: SF16-24V-5050-72-RGBW(2700K)-80-B	TYPE:	WEIGHT:
SPEC.:	DIM.: Length=1m	SERIAL No.:
MFR.: OLYMPIA lighting	SUR.:	Shielding Angle:

Table--1

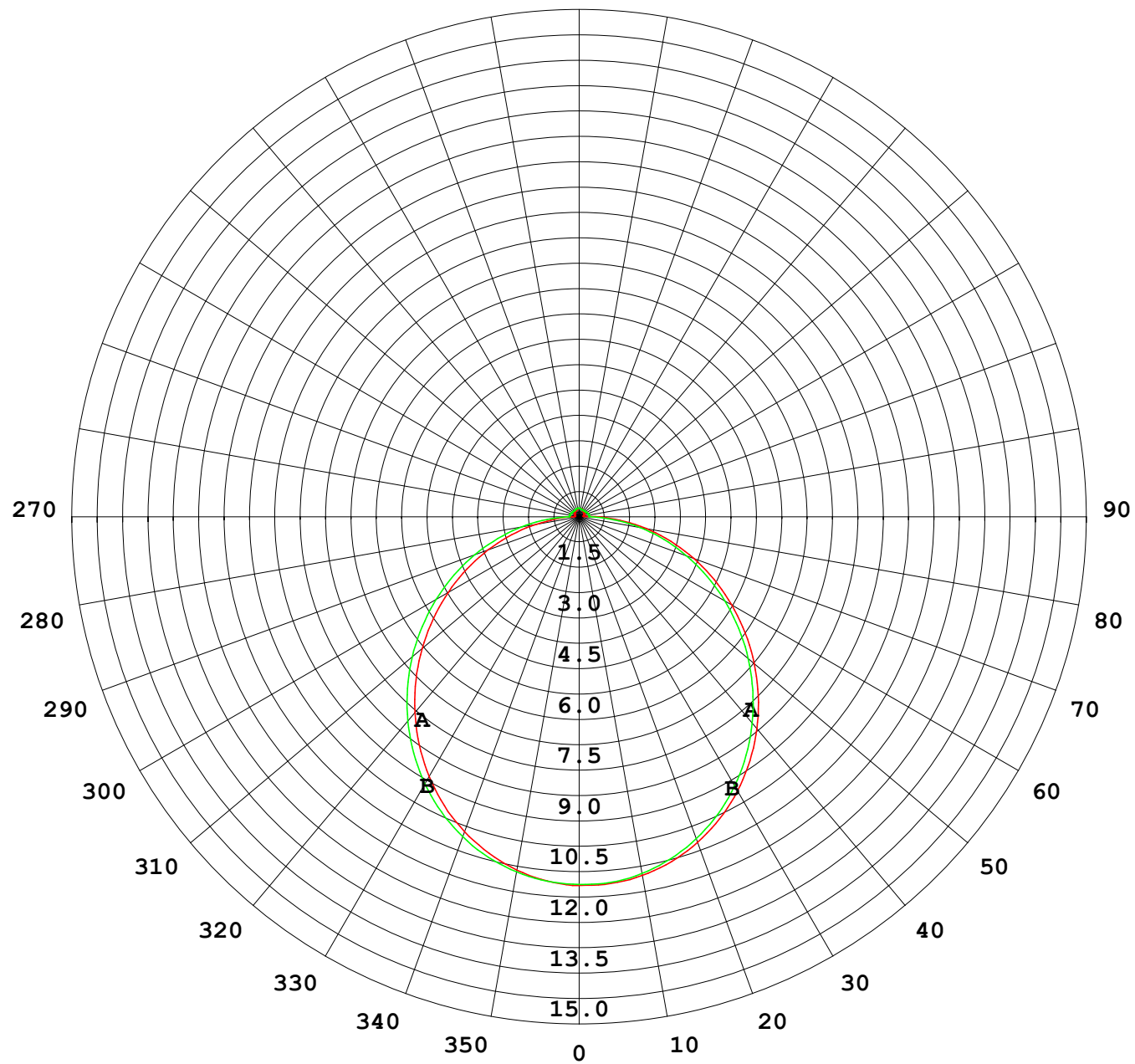
UNIT: cd

C (DEG) γ (DEG)	0	30	60	90	120	150	180	210	240	270	300	330						
0	10.9	10.9	10.9	10.9	10.9	10.9	10.9	10.9	10.9	10.9	10.9	10.9						
5	10.8	10.8	10.8	10.8	10.9	10.9	10.9	10.9	10.9	10.9	10.8	10.8						
10	10.6	10.6	10.6	10.7	10.7	10.8	10.7	10.8	10.7	10.7	10.6	10.6						
15	10.3	10.3	10.4	10.4	10.5	10.5	10.5	10.6	10.5	10.5	10.4	10.3						
20	9.89	9.90	9.99	10.1	10.2	10.2	10.2	10.3	10.2	10.1	10.0	9.92						
25	9.41	9.44	9.54	9.64	9.78	9.84	9.83	9.86	9.79	9.71	9.57	9.45						
30	8.86	8.88	9.00	9.13	9.28	9.36	9.35	9.39	9.31	9.19	9.04	8.90						
35	8.23	8.26	8.40	8.54	8.70	8.81	8.80	8.83	8.74	8.62	8.44	8.27						
40	7.54	7.58	7.73	7.89	8.06	8.18	8.17	8.20	8.10	7.97	7.78	7.59						
45	6.82	6.85	7.01	7.18	7.37	7.49	7.48	7.51	7.42	7.27	7.07	6.87						
50	6.05	6.10	6.27	6.45	6.64	6.77	6.75	6.78	6.69	6.53	6.31	6.11						
55	5.27	5.31	5.48	5.67	5.87	6.01	5.99	6.02	5.92	5.76	5.54	5.33						
60	4.46	4.50	4.69	4.89	5.08	5.21	5.20	5.23	5.14	4.98	4.75	4.53						
65	3.66	3.70	3.89	4.08	4.28	4.41	4.40	4.43	4.34	4.18	3.95	3.73						
70	2.86	2.89	3.09	3.28	3.48	3.61	3.60	3.64	3.55	3.39	3.15	2.94						
75	2.06	2.10	2.29	2.49	2.68	2.81	2.80	2.83	2.75	2.60	2.37	2.14						
80	1.28	1.31	1.51	1.72	1.89	2.02	2.00	2.04	1.98	1.83	1.58	1.35						
85	0.62	0.61	0.74	0.95	1.11	1.22	1.21	1.25	1.18	1.01	0.80	0.66						
90	0.25	0.22	0.28	0.30	0.43	0.54	0.57	0.59	0.46	0.31	0.30	0.28						
95	0.14	0.15	0.24	0.29	0.25	0.17	0.16	0.21	0.25	0.30	0.25	0.19						
100	0.14	0.16	0.24	0.29	0.25	0.17	0.13	0.18	0.24	0.30	0.25	0.19						
105	0.14	0.17	0.24	0.29	0.25	0.18	0.14	0.18	0.23	0.30	0.24	0.19						
110	0.15	0.17	0.24	0.27	0.25	0.18	0.15	0.18	0.22	0.28	0.23	0.19						
115	0.16	0.18	0.24	0.26	0.25	0.19	0.16	0.18	0.22	0.27	0.23	0.19						
120	0.17	0.19	0.24	0.26	0.25	0.20	0.16	0.18	0.22	0.26	0.23	0.19						
125	0.17	0.20	0.24	0.25	0.25	0.20	0.17	0.18	0.22	0.25	0.23	0.19						
130	0.18	0.20	0.24	0.25	0.25	0.21	0.18	0.18	0.22	0.24	0.23	0.19						
135	0.20	0.21	0.25	0.24	0.24	0.21	0.19	0.18	0.22	0.23	0.23	0.19						
140	0.20	0.22	0.24	0.24	0.24	0.22	0.20	0.19	0.23	0.23	0.23	0.20						
145	0.21	0.23	0.24	0.24	0.24	0.23	0.21	0.20	0.23	0.23	0.23	0.20						
150	0.21	0.24	0.24	0.24	0.24	0.24	0.22	0.20	0.23	0.23	0.23	0.21						
155	0.22	0.25	0.24	0.25	0.24	0.25	0.23	0.21	0.24	0.23	0.24	0.22						
160	0.23	0.25	0.24	0.25	0.24	0.25	0.24	0.23	0.25	0.23	0.25	0.23						
165	0.24	0.25	0.24	0.26	0.24	0.26	0.25	0.23	0.26	0.23	0.26	0.23						
170	0.24	0.25	0.24	0.26	0.25	0.26	0.25	0.24	0.26	0.25	0.26	0.24						
175	0.25	0.25	0.25	0.26	0.25	0.26	0.25	0.24	0.26	0.25	0.26	0.25						
180	0.25	0.25	0.26	0.26	0.26	0.26	0.25	0.25	0.26	0.26	0.26	0.25						

C Range: 0 - 360DEG  
C Interval: 30.0DEG  
Test Speed: HIGH  
Temperature:25.3℃  
Operators:  
Test Date:2025-02-25

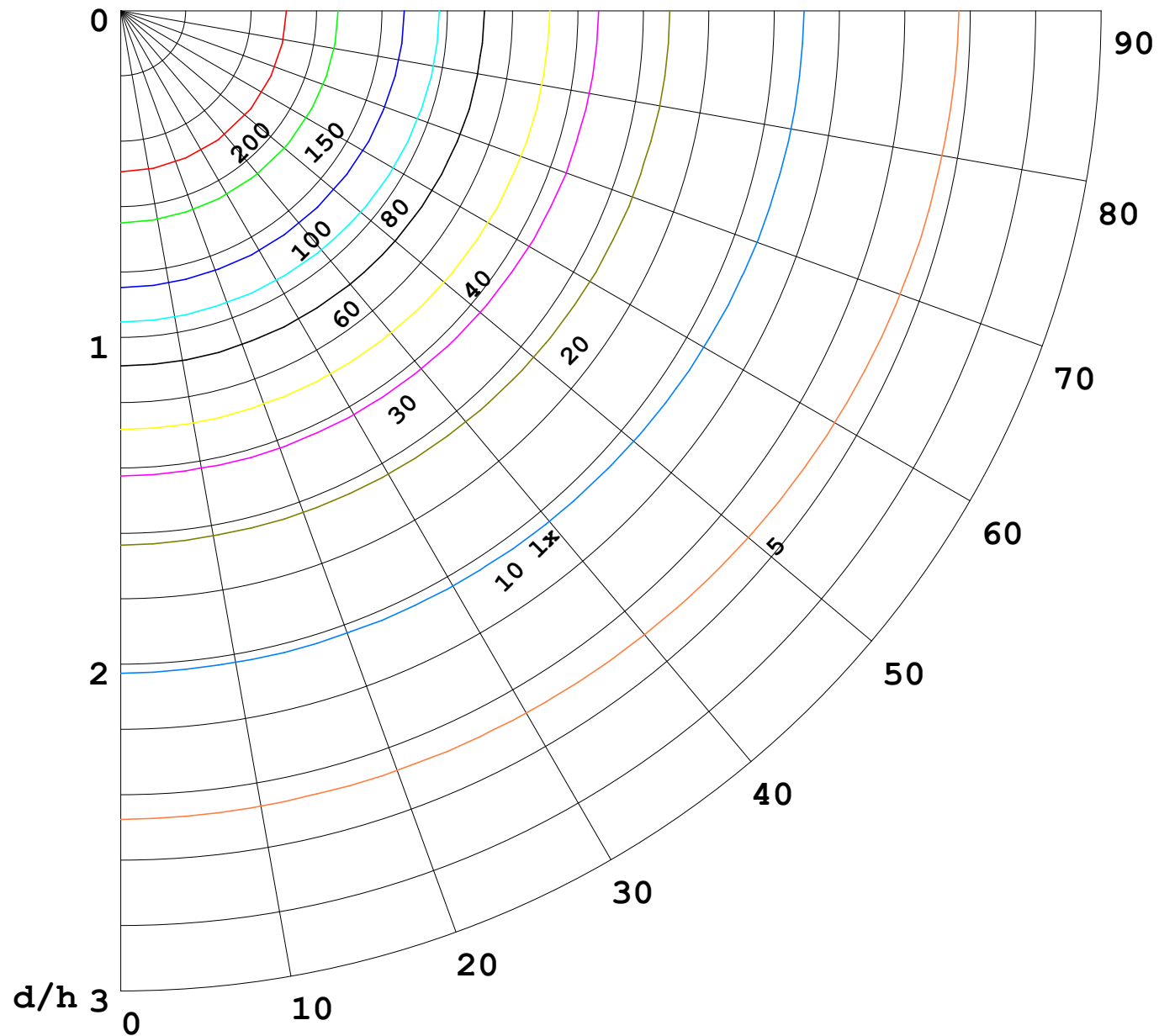
γ Range: 0 - 180DEG  
γ Interval: 1.0DEG  
Test System:EVERFINE GO-2000B\_V1 SYSTEM V2.00.488  
Humidity:65.0%  
Test Distance:6.360m [K=1.0000]  
Remarks:

I (cd)



1000 lm

$\kappa = 1$



F = 1000 lm  
 K = 0.7  
 Hcc = 0.8 m  
 Hfc = 0.0 m  
 Eave = 100 lx

	Pcc	Pw	Pfc
—————	70	50	30
—————	50	30	20

