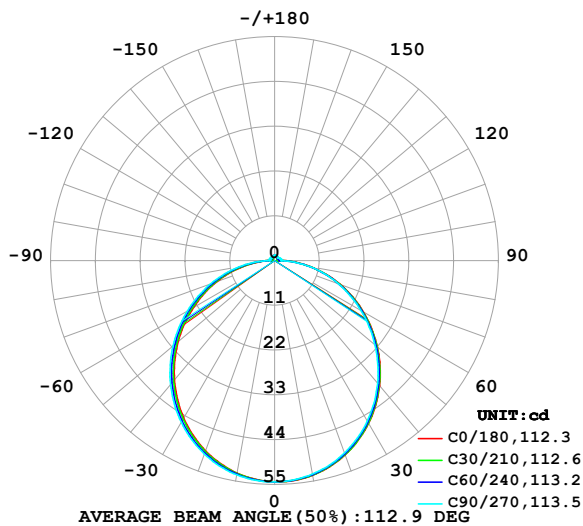


## LUMINAIRE PHOTOMETRIC TEST REPORT

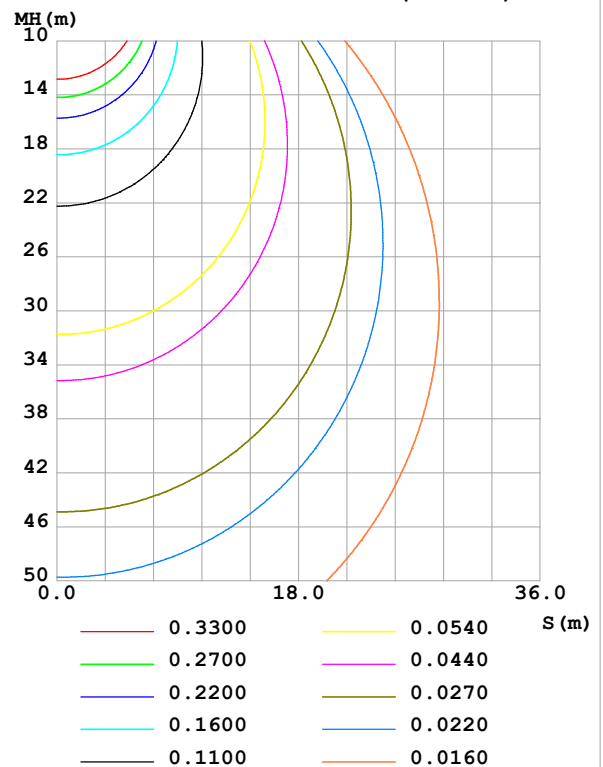
Test:U:24.00V I:0.1939A P:4.654W PF:1.000 Freq:0Hz Lamp Flux:166.87x1 lm		
NAME: SF16-24V-5050-72-RGBW(5000K)-80-G	TYPE:	WEIGHT:
SPEC.:	DIM.: Length=1m	SERIAL No.:
MFR.: OLympia lighting	SUR.:	Shielding Angle:

DATA OF LAMP		PHOTOMETRIC DATA Eff: 35.86 lm/W			
MODEL	5050	Imax (cd)	54.34	S/MH(C0/180)	1.23
NOMINAL POWER(W)		LOR(%)	100.0	S/MH(C90/270)	1.26
RATED VOLTAGE(V)	24	TOTAL FLUX(lm)	166.87	$\eta$ UP,DN(C0-180)	2.0,48.9
NOMINAL FLUX(lm)	166.87	CIE CLASS	DIRECT	$\eta$ UP,DN(C180-360)	2.0,47.1
LAMPS INSIDE	1	$\eta$ up (%)	4.0	CIBSE SHR NOM	1.25
TEST VOLTAGE(V)		$\eta$ down (%)	96.0	CIBSE SHR MAX	1.35

LUMINOUS INTENSITY DISTRIBUTION DIAGRAM



C0 PLANE ISOLUX DIAGRAM (UNIT:lx)



C Range: 0 - 360DEG  
C Interval: 30.0DEG  
Test Speed: HIGH  
Temperature: 25.3°C  
Operators:  
Test Date: 2025-02-25

$\gamma$  Range: 0 - 180DEG  
 $\gamma$  Interval: 1.0DEG  
Test System: EVERFINE GO-2000B\_V1 SYSTEM V2.00.488  
Humidity: 65.0%  
Test Distance: 6.360m [K=1.0000]  
Remarks:

## ZONAL FLUX DIAGRAM

## ZONAL FLUX DIAGRAM:

$\gamma$	C0	C45	C90	C135	C180	C225	C270	C315	$\gamma$	$\Phi$ zone	$\Phi$ total	%lum, lamp
10	53.57	53.46	53.27	53.46	53.01	53.18	53.45	53.19	0- 10	5.138	5.138	3.08,3.08
20	50.77	50.61	50.29	50.65	49.70	50.07	50.55	50.07	10- 20	14.69	19.83	11.9,11.9
30	46.18	45.98	45.56	46.06	44.67	45.21	45.87	45.20	20- 30	22.20	42.03	25.2,25.2
40	40.13	39.87	39.36	39.99	38.28	38.93	39.76	38.91	30- 40	26.69	68.71	41.2,41.2
50	32.98	32.70	32.20	32.83	30.91	31.64	32.57	31.62	40- 50	27.69	96.41	57.8,57.8
60	25.18	24.89	24.46	25.03	23.04	23.79	24.75	23.76	50- 60	25.32	121.7	72.9,72.9
70	17.15	16.88	16.79	17.10	15.04	15.77	16.71	15.72	60- 70	20.17	141.9	85,85
80	9.193	8.947	8.902	9.140	7.149	7.826	8.793	7.760	70- 80	13.09	155.0	92.9,92.9
90	2.395	1.975	1.605	2.081	1.424	1.504	1.335	1.450	80- 90	5.175	160.2	96,96
100	0.7121	0.9423	1.585	0.9645	0.6257	1.0000	1.328	1.028	90-100	1.238	161.4	96.7,96.7
110	0.7379	0.9308	1.484	1.031	0.7093	1.009	1.319	1.005	100-110	1.075	162.5	97.4,97.4
120	0.8330	0.9452	1.261	1.028	0.7957	1.013	1.241	1.005	110-120	1.005	163.5	98,98
130	0.9252	0.9727	1.106	1.022	0.8938	1.037	1.212	1.028	120-130	0.9094	164.4	98.5,98.5
140	1.009	1.029	1.077	1.060	0.9803	1.066	1.181	1.058	130-140	0.8015	165.2	99,99
150	1.093	1.105	1.143	1.136	1.084	1.113	1.169	1.105	140-150	0.6804	165.9	99.4,99.4
160	1.173	1.192	1.227	1.220	1.176	1.178	1.175	1.175	150-160	0.5327	166.4	99.7,99.7
170	1.251	1.260	1.290	1.281	1.263	1.253	1.250	1.256	160-170	0.3472	166.7	99.9,99.9
180	1.289	1.291	1.305	1.307	1.289	1.290	1.302	1.304	170-180	0.1221	166.9	100,100
DEG	LUMINOUS INTENSITY:cd									UNIT:lm		

Conical surface Flux(90deg): 82.654 lm

%lum = 49.5%

%lamp = 49.5%

Conical surface Flux(130deg): 132.6 lm

%lum = 79.5%

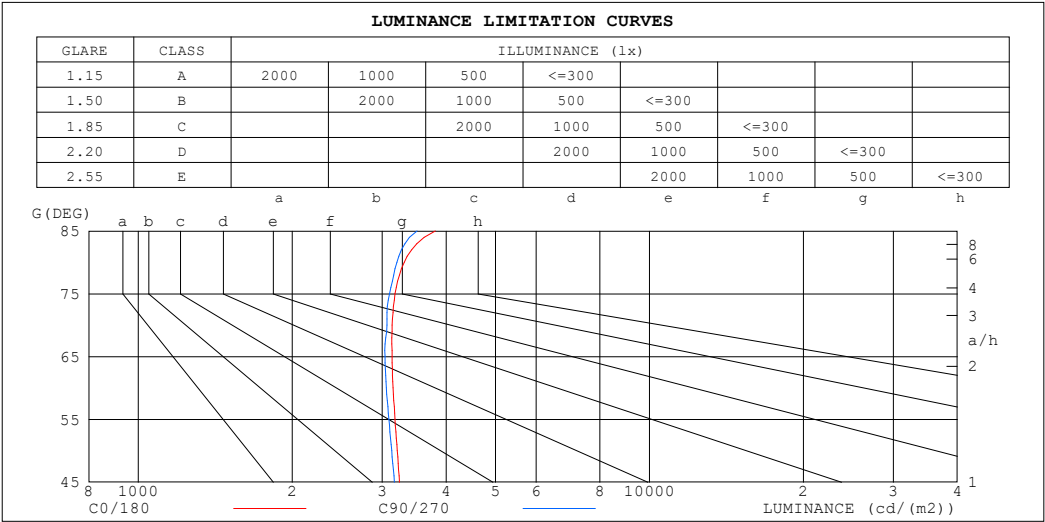
%lamp = 79.5%

C Range: 0 - 360DEG  
 C Interval: 30.0DEG  
 Test Speed: HIGH  
 Temperature:25.3℃  
 Operators:  
 Test Date:2025-02-25

$\gamma$  Range: 0 - 180DEG  
 $\gamma$  Interval: 1.0DEG  
 Test System:EVERFINE GO-2000B\_V1 SYSTEM V2.00.488  
 Humidity:65.0%  
 Test Distance:6.360m [K=1.0000]  
 Remarks:

LUMINANCE LIMITATION CURVES

Test:U:24.00V I:0.1939A P:4.654W PF:1.000 Freq:0Hz Lamp Flux:166.87x1 lm		
NAME: SF16-24V-5050-72-RGBW(5000K)-80-G	TYPE:	WEIGHT:
SPEC.:	DIM.: Length=1m	SERIAL No.:
MFR.: OLympia lighting	SUR.:	Shielding Angle:



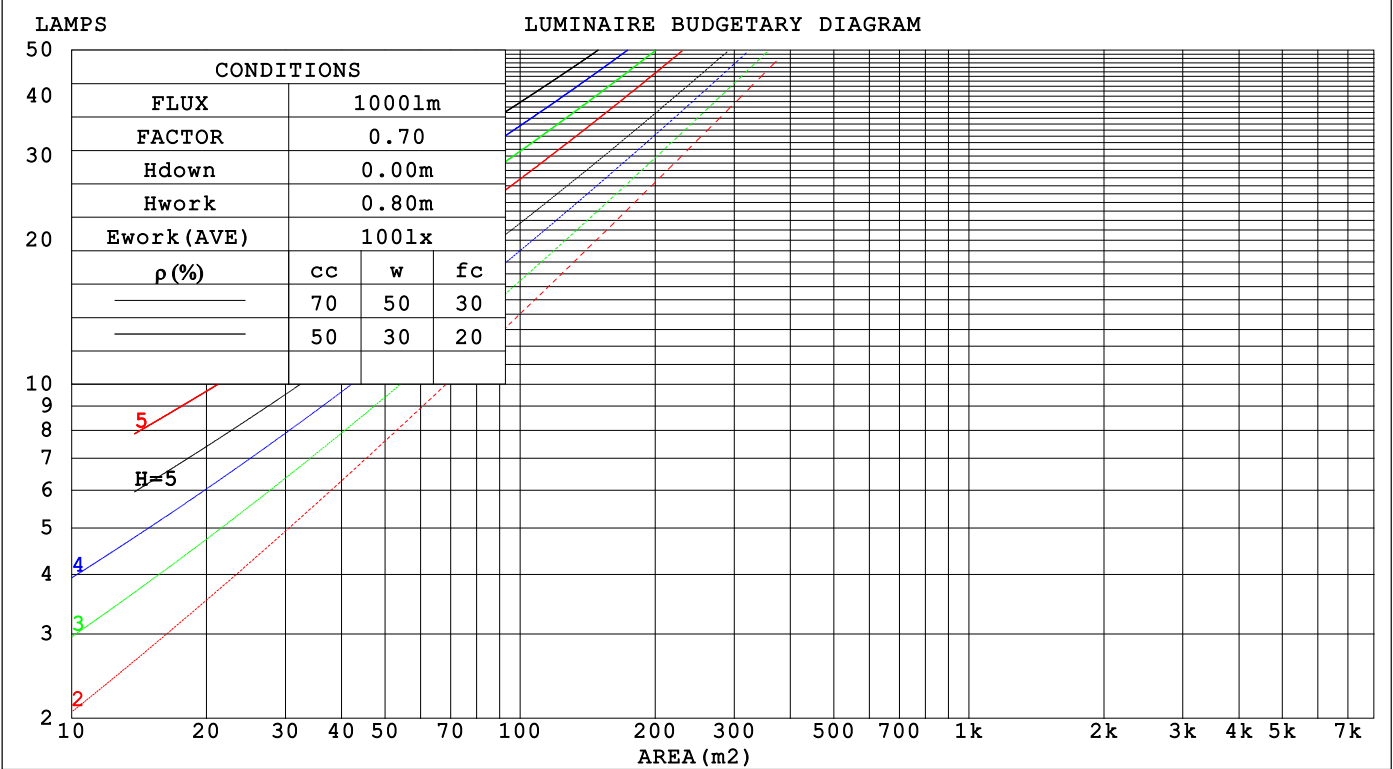
LUMINANCE cd/(m2)		
G (DEG)	C0/180	C90/270
85	3813	3511
80	3313	3203
75	3179	3102
70	3138	3067
65	3137	3036
60	3151	3057
55	3178	3091
50	3210	3130
45	3243	3170

C Range: 0 - 360DEG	γ Range: 0 - 180DEG
C Interval: 30.0DEG	γ Interval: 1.0DEG
Test Speed: HIGH	Test System:EVERFINE GO-2000B_V1 SYSTEM V2.00.488
Temperature:25.3℃	Humidity:65.0%
Operators:	Test Distance:6.360m [K=1.0000]
Test Date:2025-02-25	Remarks:

CU AND LUMINAIRE BUDGETARY ESTIMATE DIAGRAM

Test:U:24.00V I:0.1939A P:4.654W PF:1.000 Freq:0Hz Lamp Flux:166.87x1 lm		
NAME: SF16-24V-5050-72-RGBW(5000K)-80-G	TYPE:	WEIGHT:
SPEC.:	DIM.: Length=1m	SERIAL No.:
MFR.: OLYMPIA lighting	SUR.:	Shielding Angle:

pcc	80%			70%			50%			30%			10%			0
pw	50%	30%	10%	50%	30%	10%	50%	30%	10%	50%	30%	10%	50%	30%	10%	0
pfc	20%			20%			20%			20%			20%			0
RCR	RCR:Room Cavity Ratio															

C Range: 0 - 360DEG  
C Interval: 30.0DEG  
Test Speed: HIGH  
Temperature:25.3℃  
Operators:  
Test Date:2025-02-25γ Range: 0 - 180DEG  
γ Interval: 1.0DEG  
Test System:EVERFINE GO-2000B\_V1 SYSTEM V2.00.488  
Humidity:65.0%  
Test Distance:6.360m [K=1.0000]  
Remarks:

## WEC AND CCEC

Test:U:24.00V I:0.1939A P:4.654W PF:1.000 Freq:0Hz Lamp Flux:166.87x1 lm		
NAME: SF16-24V-5050-72-RGBW(5000K)-80-G	TYPE:	WEIGHT:
SPEC.:	DIM.: Length=1m	SERIAL No.:
MFR.: OLYMPIA lighting	SUR.:	Shielding Angle:

pcc	80%			70%			50%			30%			10%			0														
pw	50%	30%	10%	50%	30%	10%	50%	30%	10%	50%	30%	10%	50%	30%	10%	0														
pfc	20%			20%			20%			20%			20%			0														
RCR	RCR:Room Cavity Ratio															Wall Exitance Coefficients(WEC)														
0.0																														
1.0	.327	.186	.059	.319	.182	.058	.303	.174	.056	.289	.167	.053	.276	.160	.052															
2.0	.301	.165	.051	.294	.162	.050	.280	.156	.048	.267	.150	.047	.256	.145	.046															
3.0	.276	.147	.044	.270	.144	.043	.257	.139	.042	.246	.135	.041	.235	.130	.040															
4.0	.253	.132	.039	.247	.129	.038	.236	.125	.037	.226	.121	.037	.216	.118	.036															
5.0	.233	.119	.034	.228	.117	.034	.218	.113	.033	.209	.110	.033	.200	.107	.032															
6.0	.215	.108	.031	.211	.106	.031	.202	.103	.030	.194	.101	.030	.186	.098	.029															
7.0	.200	.099	.028	.196	.098	.028	.188	.095	.027	.180	.092	.027	.173	.090	.026															
8.0	.187	.091	.026	.183	.090	.025	.175	.088	.025	.169	.085	.025	.162	.083	.024															
9.0	.175	.084	.024	.171	.083	.023	.165	.081	.023	.158	.079	.023	.153	.077	.022															
10.0	.164	.079	.022	.161	.078	.022	.155	.076	.021	.149	.074	.021	.144	.072	.021															

pcc	80%			70%			50%			30%			10%			0
pw	50%	30%	10%	50%	30%	10%	50%	30%	10%	50%	30%	10%	50%	30%	10%	0
pfc	20%			20%			20%			20%			20%			0
RCR	RCR:Room Cavity Ratio						Ceiling Cavity Exitance Coefficients(CCEC)									
0.0	.221	.221	.221	.189	.189	.189	.129	.129	.129	.074	.074	.074	.024	.024	.024	
1.0	.212	.187	.164	.182	.160	.141	.124	.110	.098	.072	.064	.057	.023	.021	.018	
2.0	.205	.163	.128	.175	.140	.111	.120	.097	.077	.069	.056	.045	.022	.018	.015	
3.0	.197	.146	.105	.169	.126	.091	.116	.087	.064	.067	.051	.038	.022	.017	.012	
4.0	.189	.132	.089	.162	.114	.077	.112	.080	.055	.065	.047	.032	.021	.015	.011	
5.0	.182	.122	.078	.156	.106	.068	.108	.074	.048	.062	.043	.029	.020	.014	.009	
6.0	.174	.114	.070	.150	.099	.061	.103	.069	.043	.060	.041	.026	.019	.013	.009	
7.0	.168	.107	.065	.144	.093	.056	.100	.065	.040	.058	.038	.024	.019	.013	.008	
8.0	.161	.101	.060	.139	.088	.053	.096	.062	.037	.056	.036	.022	.018	.012	.007	
9.0	.155	.096	.057	.133	.084	.050	.092	.059	.035	.054	.035	.021	.017	.011	.007	
10.0	.149	.092	.054	.129	.080	.047	.089	.056	.034	.052	.033	.020	.017	.011	.007	

C Range: 0 - 360DEG  
C Interval: 30.0DEG  
Test Speed: HIGH  
Temperature:25.3℃  
Operators:  
Test Date:2025-02-25

γ Range: 0 - 180DEG  
γ Interval: 1.0DEG  
Test System:EVERFINE GO-2000B\_V1 SYSTEM V2.00.488  
Humidity:65.0%  
Test Distance:6.360m [K=1.0000]  
Remarks:

UGR(Unified Glare Rating) Table

Test:U:24.00V I:0.1939A P:4.654W PF:1.000 Freq:0Hz Lamp Flux:166.87x1 lm										
NAME: SF16-24V-5050-72-RGBW(5000K)-80-G					TYPE:			WEIGHT:		
SPEC.:					DIM.: Length=1m			SERIAL No.:		
MFR.: OLympia lighting					SUR.:			Shielding Angle:		
ceiling/cavity	0.7	0.7	0.5	0.5	0.3	0.7	0.7	0.5	0.5	0.3
walls	0.5	0.3	0.5	0.3	0.3	0.5	0.3	0.5	0.3	0.3
working plane	0.2	0.2	0.2	0.2	0.2	0.2	0.2	0.2	0.2	0.2
Room dimensions	Viewed crosswise					Viewed endwise				
x = 2H y = 2H	22.9	24.4	23.3	24.7	25.0	22.8	24.3	23.1	24.6	24.9
3H	24.7	26.0	25.0	26.4	26.7	24.5	25.9	24.9	26.2	26.5
4H	25.5	26.8	25.8	27.1	27.4	25.3	26.6	25.7	27.0	27.3
6H	26.2	27.4	26.5	27.7	28.1	26.0	27.2	26.4	27.6	28.0
8H	26.4	27.6	26.8	28.0	28.4	26.3	27.5	26.7	27.8	28.2
12H	26.7	27.8	27.1	28.2	28.6	26.5	27.7	26.9	28.0	28.4
4H 2H	23.6	24.9	23.9	25.2	25.5	23.5	24.8	23.9	25.1	25.5
3H	25.5	26.7	25.9	27.0	27.4	25.4	26.6	25.8	26.9	27.3
4H	26.4	27.5	26.9	27.9	28.3	26.3	27.4	26.8	27.8	28.2
6H	27.3	28.2	27.8	28.7	29.1	27.2	28.1	27.6	28.5	29.0
8H	27.7	28.5	28.1	29.0	29.4	27.5	28.4	28.0	28.8	29.3
12H	28.0	28.8	28.5	29.2	29.7	27.8	28.6	28.3	29.1	29.6
8H 4H	26.8	27.7	27.3	28.1	28.6	26.7	27.6	27.2	28.0	28.5
6H	27.8	28.6	28.3	29.0	29.6	27.7	28.4	28.2	28.9	29.4
8H	28.3	29.0	28.8	29.5	30.0	28.2	28.8	28.7	29.3	29.9
12H	28.8	29.3	29.3	29.9	30.4	28.6	29.2	29.2	29.7	30.3
12H 4H	26.8	27.6	27.3	28.1	28.6	26.7	27.5	27.2	28.0	28.5
6H	27.9	28.6	28.5	29.1	29.6	27.8	28.5	28.4	29.0	29.5
8H	28.5	29.0	29.0	29.6	30.1	28.4	28.9	28.9	29.4	30.0
Variations with the observer position at spacings(CIE Pub.117):										
S = 1.0H	+ 0.1 / - 0.2					+ 0.1 / - 0.2				
1.5H	+ 0.2 / - 0.3					+ 0.2 / - 0.3				
2.0H	+ 0.1 / - 0.3					+ 0.1 / - 0.3				

CIE Pub.117, 166.9 lm Total Lamp Luminous Flux Correct (8log(F/F0) = -6.2)  
Area: 0.016 m2

C Range: 0 - 360DEG  
C Interval: 30.0DEG  
Test Speed: HIGH  
Temperature:25.3℃  
Operators:  
Test Date:2025-02-25

γ Range: 0 - 180DEG  
γ Interval: 1.0DEG  
Test System:EVERFINE GO-2000B\_V1 SYSTEM V2.00.488  
Humidity:65.0%  
Test Distance:6.360m [K=1.0000]  
Remarks:

## UTILIZATION FACTORS TABLE

Test:U:24.00V I:0.1939A P:4.654W PF:1.000 Freq:0Hz Lamp Flux:166.87x1 lm		
NAME: SF16-24V-5050-72-RGBW(5000K)-80-G	TYPE:	WEIGHT:
SPEC.:	DIM.: Length=1m	SERIAL No.:
MFR.: OLympia lighting	SUR.:	Shielding Angle:

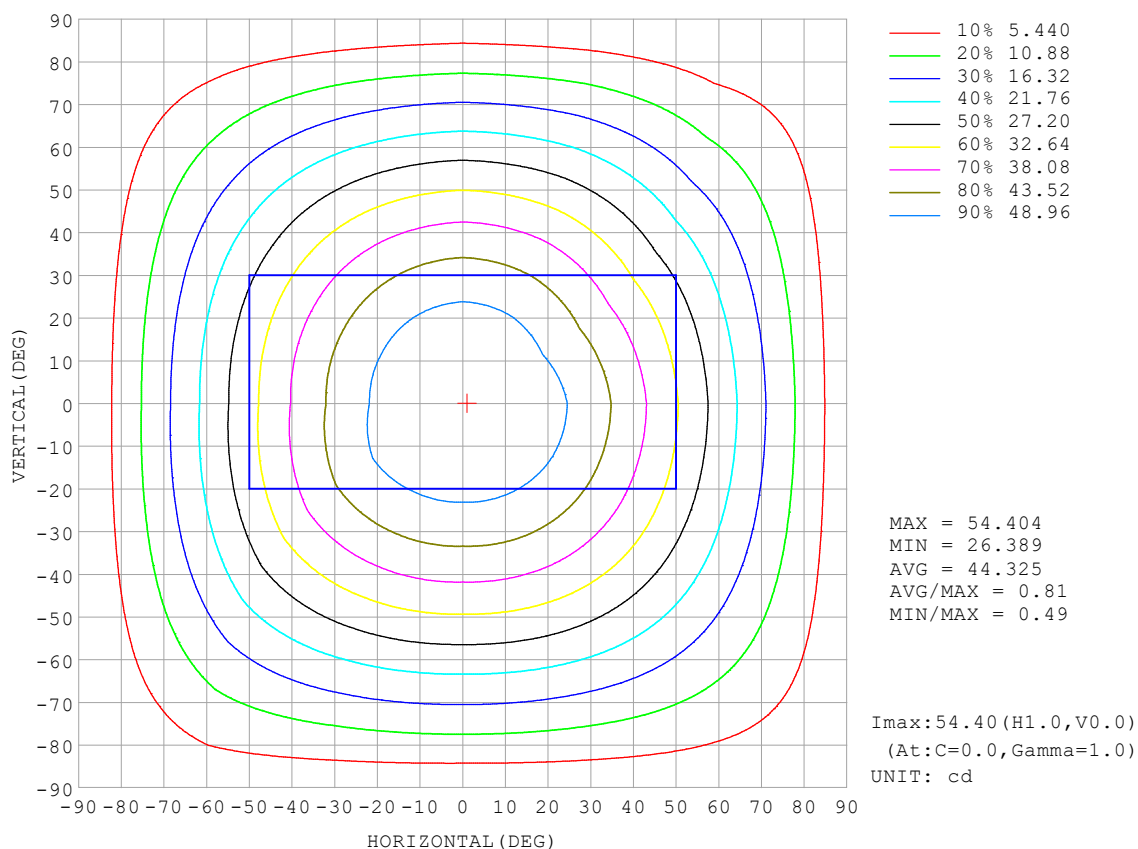
REFLECTANCE										
Ceiling	0.8	0.8	0.8	0.7	0.7	0.7	0.5	0.5	0.5	0
Walls	0.7	0.5	0.3	0.7	0.5	0.3	0.7	0.5	0.3	0
Working plane	0.2	0.2	0.2	0.2	0.2	0.2	0.2	0.2	0.2	0
ROOM INDEX	UTILIZATION FACTORS (PERCENT) $k(RI) \times RCR = 5$									
$k = 0.60$	56	44	37	55	43	37	53	43	36	30
0.80	65	53	46	64	53	46	62	52	45	38
1.00	74	62	55	72	61	54	70	63	53	46
1.25	81	70	62	79	69	62	76	67	61	53
1.50	86	75	68	84	74	67	80	72	66	58
2.00	93	83	77	90	82	76	86	79	74	65
2.50	97	88	82	94	87	81	90	84	78	69
3.00	100	93	87	98	91	85	93	87	83	73
4.00	104	98	93	101	96	91	97	92	88	78
5.00	107	101	97	104	99	95	99	95	92	81
ROOM INDEX	UF (total)									Direct
According to DIN EN 13032-2 2004			Suspended					SHRNOM = 1.25		

C Range: 0 - 360DEG  
 C Interval: 30.0DEG  
 Test Speed: HIGH  
 Temperature: 25.3 °C  
 Operators:  
 Test Date: 2025-02-25

γ Range: 0 - 180DEG  
 γ Interval: 1.0DEG  
 Test System: EVERFINE GO-2000B\_V1 SYSTEM V2.00.488  
 Humidity: 65.0%  
 Test Distance: 6.360m [K=1.0000]  
 Remarks:

## ISOCANDELA DIAGRAM

Test:U:24.00V I:0.1939A P:4.654W PF:1.000 Freq:0Hz Lamp Flux:166.87x1 lm		
NAME: SF16-24V-5050-72-RGBW(5000K)-80-G	TYPE:	WEIGHT:
SPEC.:	DIM.: Length=1m	SERIAL No.:
MFR.: OLympia lighting	SUR.:	Shielding Angle:



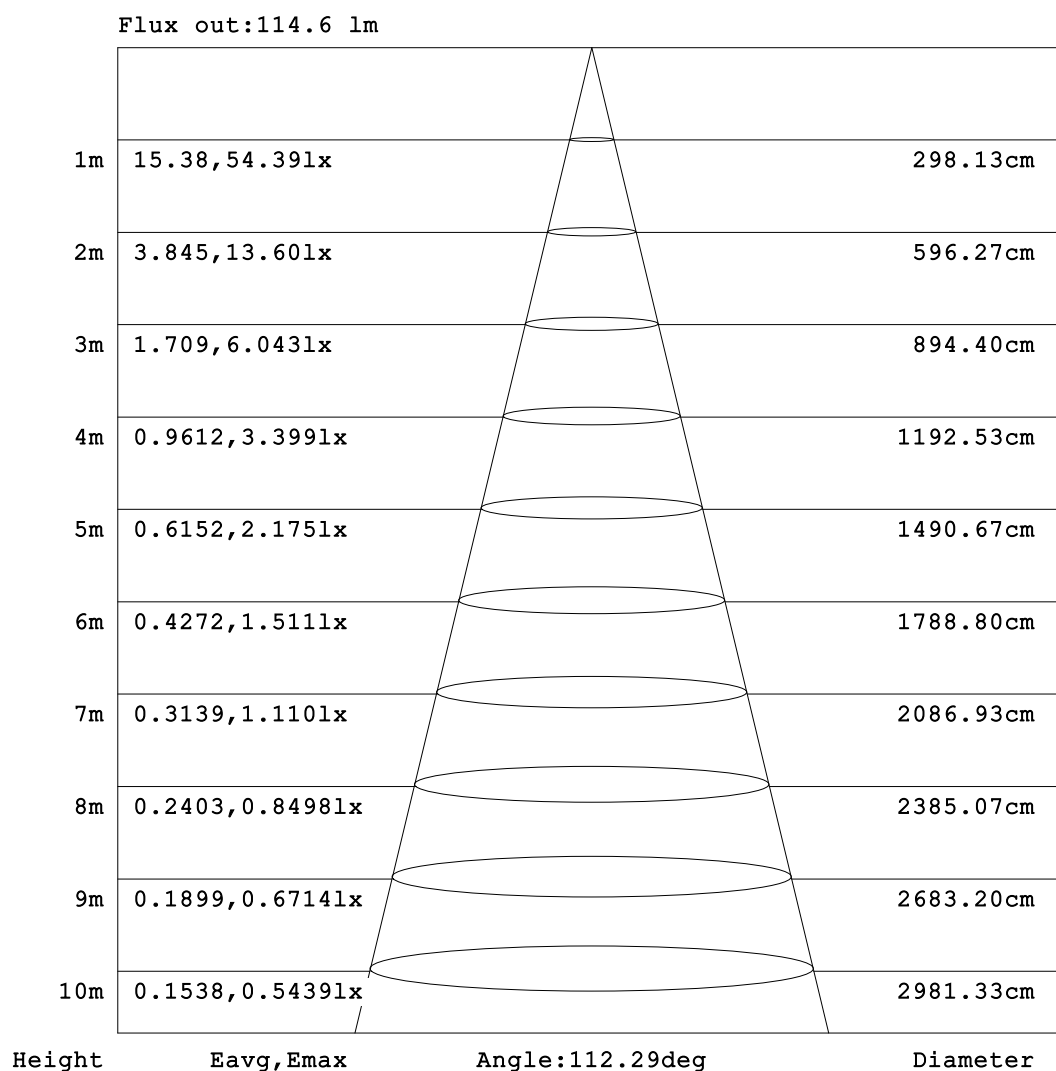
C Range: 0 - 360DEG  
C Interval: 30.0DEG  
Test Speed: HIGH  
Temperature:25.3℃  
Operators:  
Test Date:2025-02-25

γ Range: 0 - 180DEG  
γ Interval: 1.0DEG  
Test System:EVERFINE GO-2000B\_V1 SYSTEM V2.00.488  
Humidity:65.0%  
Test Distance:6.360m [K=1.0000]  
Remarks:



## AAI Figure

Test:U:24.00V I:0.1939A P:4.654W PF:1.000 Freq:0Hz Lamp Flux:166.87x1 lm		
NAME: SF16-24V-5050-72-RGBW(5000K)-80-G	TYPE:	WEIGHT:
SPEC.:	DIM.: Length=1m	SERIAL No.:
MFR.: OLympia lighting	SUR.:	Shielding Angle:



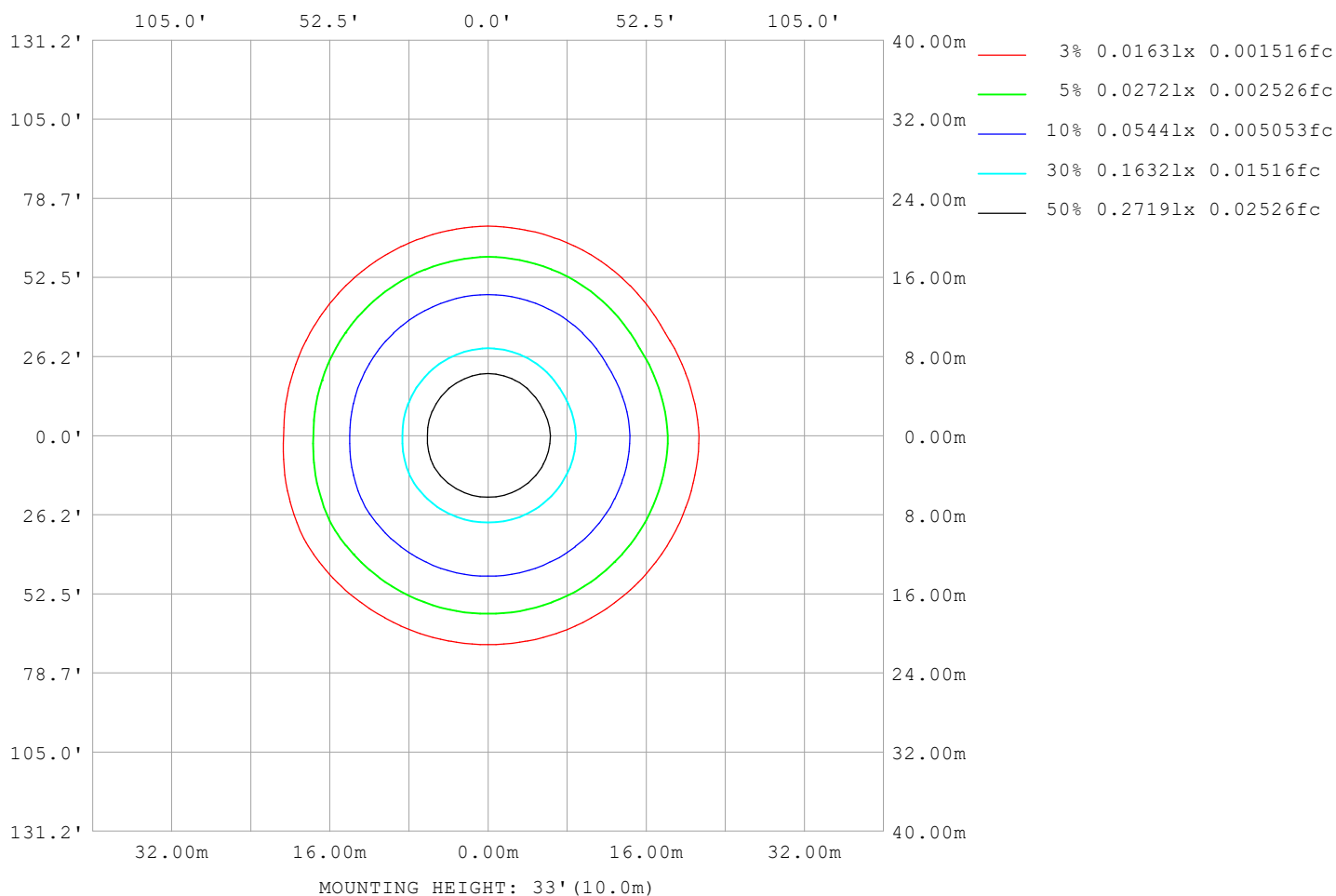
Note:The Curves indicate the illuminated area and the average illumination when the luminaire is at different distance.

C Range: 0 - 360DEG  
C Interval: 30.0DEG  
Test Speed: HIGH  
Temperature:25.3℃  
Operators:  
Test Date:2025-02-25

γ Range: 0 - 180DEG  
γ Interval: 1.0DEG  
Test System:EVERFINE GO-2000B\_V1 SYSTEM V2.00.488  
Humidity:65.0%  
Test Distance:6.360m [K=1.0000]  
Remarks:

## ISOLUX DIAGRAM

Test:U:24.00V I:0.1939A P:4.654W PF:1.000 Freq:0Hz Lamp Flux:166.87x1 lm		
NAME: SF16-24V-5050-72-RGBW(5000K)-80-G	TYPE:	WEIGHT:
SPEC.:	DIM.: Length=1m	SERIAL No.:
MFR.: OLympia lighting	SUR.:	Shielding Angle:



C Range: 0 - 360DEG  
C Interval: 30.0DEG  
Test Speed: HIGH  
Temperature: 25.3°C  
Operators:  
Test Date: 2025-02-25

γ Range: 0 - 180DEG  
γ Interval: 1.0DEG  
Test System: EVERFINE GO-2000B\_V1 SYSTEM V2.00.488  
Humidity: 65.0%  
Test Distance: 6.360m [K=1.0000]  
Remarks:

## LED Avg.L Report

Test:U:24.00V I:0.1939A P:4.654W PF:1.000 Freq:0Hz Lamp Flux:166.87x1 lm		
NAME: SF16-24V-5050-72-RGBW(5000K)-80-G	TYPE:	WEIGHT:
SPEC.:	DIM.: Length=1m	SERIAL No.:
MFR.: OLympia lighting	SUR.:	Shielding Angle:

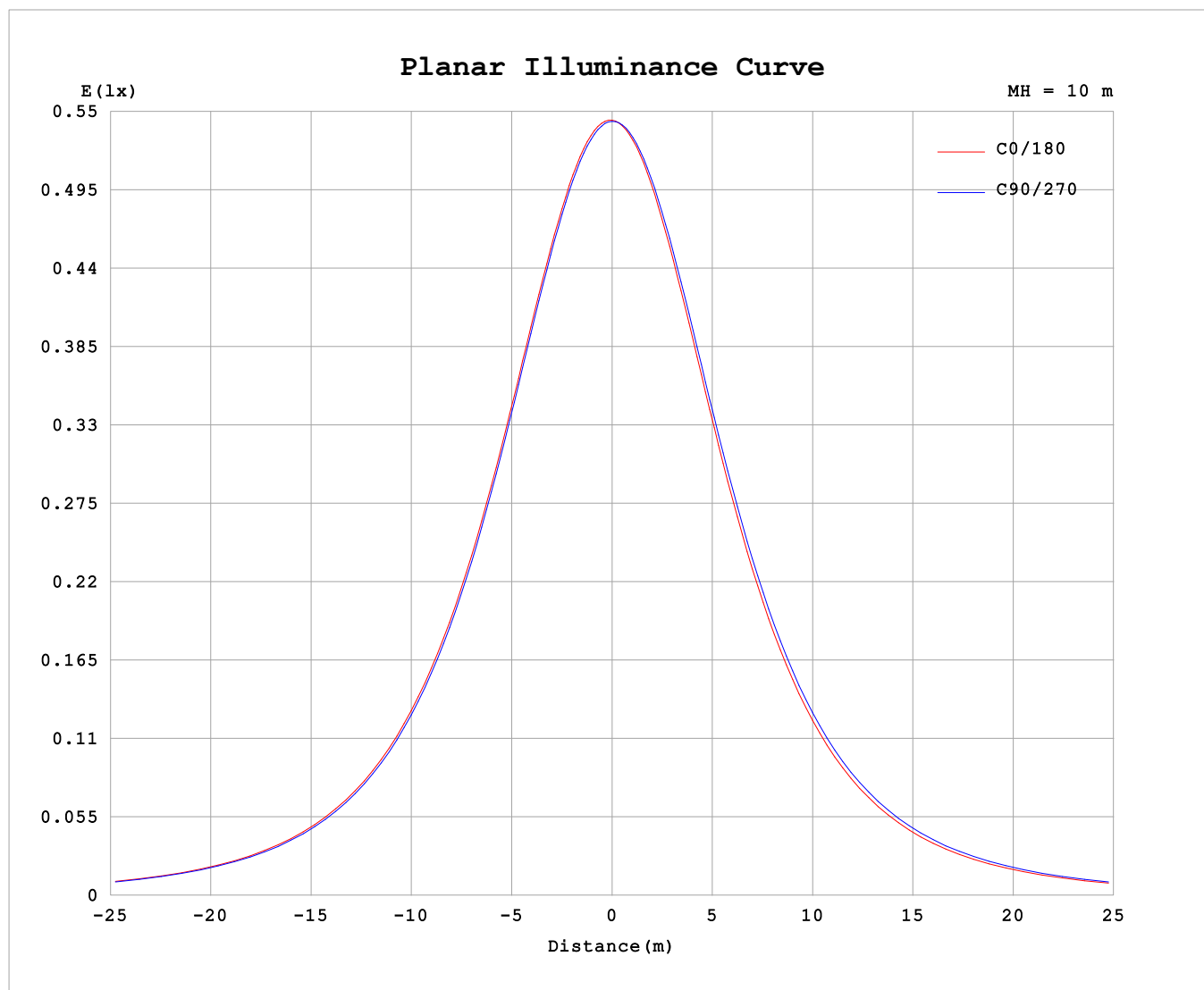
AvgL	cd/m2
L_0~180 (65) av	2974
L_0~180 (75) av	2925
L_0~180 (85) av	3179
L_90~270 (65) av	3052
L_90~270 (75) av	3085
L_90~270 (85) av	3509
L_45 (65) av	3011
L_45 (75) av	2985
L_45 (85) av	3260

Standard: GB/T 29293-2012

C Range: 0 - 360DEG  
C Interval: 30.0DEG  
Test Speed: HIGH  
Temperature:25.3℃  
Operators:  
Test Date:2025-02-25

γ Range: 0 - 180DEG  
γ Interval: 1.0DEG  
Test System:EVERFINE GO-2000B\_V1 SYSTEM V2.00.488  
Humidity:65.0%  
Test Distance:6.360m [K=1.0000]  
Remarks:

## Planar Illuminance Curve



C Range: 0 - 360DEG  
C Interval: 30.0DEG  
Test Speed: HIGH  
Temperature: 25.3 °C  
Operators:  
Test Date: 2025-02-25

$\gamma$  Range: 0 - 180DEG  
 $\gamma$  Interval: 1.0DEG  
Test System: EVERFINE GO-2000B\_V1 SYSTEM V2.00.488  
Humidity: 65.0%  
Test Distance: 6.360m [K=1.0000]  
Remarks:

## LUMINOUS DISTRIBUTION INTENSITY DATA

Test:U:24.00V I:0.1939A P:4.654W PF:1.000 Freq:0Hz Lamp Flux:166.87x1 lm		
NAME: SF16-24V-5050-72-RGBW(5000K)-80-G	TYPE:	WEIGHT:
SPEC.:	DIM.: Length=1m	SERIAL No.:
MFR.: OLYMPIA lighting	SUR.:	Shielding Angle:

Table--1

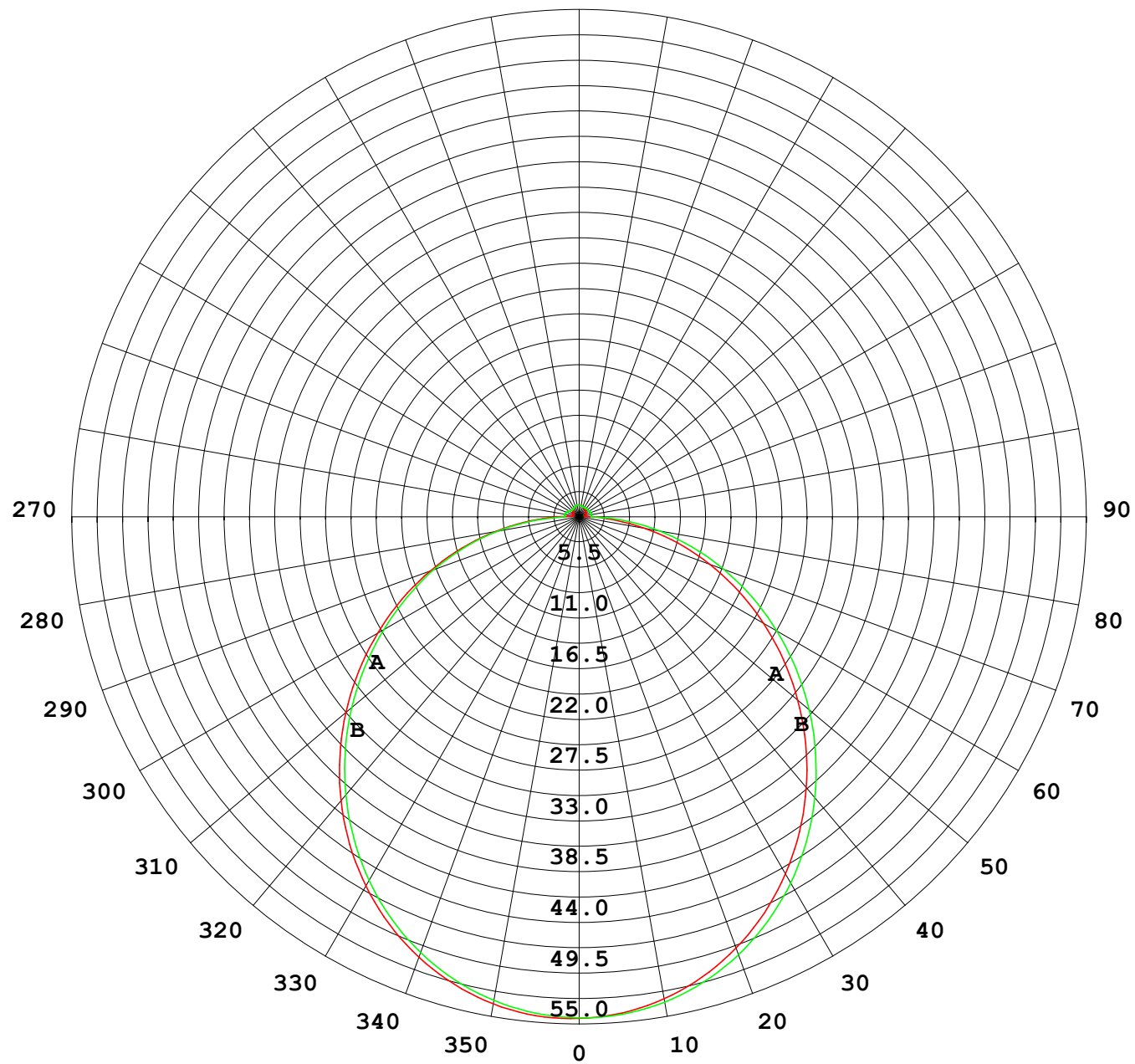
UNIT: cd

C (DEG) γ (DEG)	0	30	60	90	120	150	180	210	240	270	300	330						
0	54.3	54.3	54.3	54.3	54.3	54.3	54.3	54.3	54.3	54.3	54.3	54.3						
5	54.2	54.2	54.1	54.0	54.1	54.2	53.9	54.0	54.0	54.1	54.1	54.0						
10	53.6	53.5	53.4	53.3	53.4	53.6	53.0	53.1	53.3	53.4	53.3	53.1						
15	52.4	52.4	52.2	52.0	52.1	52.4	51.6	51.7	52.0	52.2	52.1	51.7						
20	50.8	50.7	50.5	50.3	50.5	50.8	49.7	49.9	50.3	50.5	50.4	49.8						
25	48.7	48.6	48.4	48.1	48.3	48.8	47.4	47.6	48.1	48.4	48.2	47.5						
30	46.2	46.1	45.8	45.6	45.8	46.3	44.7	44.9	45.5	45.9	45.6	44.8						
35	43.3	43.2	43.0	42.6	42.9	43.5	41.6	42.0	42.5	43.0	42.6	41.8						
40	40.1	40.0	39.7	39.4	39.7	40.3	38.3	38.6	39.2	39.8	39.4	38.4						
45	36.6	36.5	36.2	35.9	36.2	36.8	34.7	35.0	35.7	36.3	35.9	34.9						
50	33.0	32.8	32.6	32.2	32.5	33.1	30.9	31.3	32.0	32.6	32.1	31.1						
55	29.1	29.0	28.7	28.4	28.7	29.3	27.0	27.4	28.1	28.7	28.3	27.2						
60	25.2	25.0	24.8	24.5	24.7	25.3	23.0	23.4	24.2	24.7	24.3	23.2						
65	21.2	21.0	20.8	20.5	20.7	21.3	19.0	19.4	20.2	20.7	20.3	19.2						
70	17.2	17.0	16.8	16.8	16.9	17.3	15.0	15.4	16.1	16.7	16.3	15.2						
75	13.1	13.0	12.8	12.8	12.8	13.3	11.1	11.4	12.1	12.7	12.3	11.2						
80	9.19	9.01	8.88	8.90	8.91	9.37	7.15	7.48	8.17	8.79	8.30	7.22						
85	5.31	5.11	4.96	4.90	5.01	5.45	3.56	3.72	4.28	4.89	4.36	3.59						
90	2.40	2.15	1.79	1.61	1.83	2.34	1.42	1.51	1.50	1.33	1.52	1.37						
95	0.77	0.72	1.16	1.62	1.18	0.83	0.59	0.83	1.15	1.32	1.17	0.90						
100	0.71	0.74	1.15	1.58	1.21	0.72	0.63	0.82	1.18	1.33	1.16	0.90						
105	0.71	0.75	1.11	1.56	1.24	0.76	0.67	0.85	1.17	1.35	1.13	0.90						
110	0.74	0.78	1.08	1.48	1.25	0.81	0.71	0.87	1.14	1.32	1.11	0.90						
115	0.78	0.82	1.05	1.37	1.22	0.85	0.76	0.89	1.13	1.27	1.11	0.90						
120	0.83	0.87	1.02	1.26	1.16	0.90	0.80	0.90	1.13	1.24	1.11	0.90						
125	0.88	0.91	1.00	1.17	1.11	0.93	0.84	0.92	1.13	1.23	1.11	0.92						
130	0.93	0.95	1.00	1.11	1.07	0.98	0.89	0.95	1.13	1.21	1.11	0.94						
135	0.97	0.99	1.00	1.07	1.06	1.01	0.93	0.97	1.13	1.20	1.11	0.96						
140	1.01	1.04	1.02	1.08	1.06	1.06	0.98	1.00	1.13	1.18	1.12	1.00						
145	1.05	1.07	1.06	1.11	1.09	1.10	1.04	1.03	1.14	1.17	1.12	1.03						
150	1.09	1.11	1.10	1.14	1.13	1.14	1.08	1.08	1.15	1.17	1.13	1.07						
155	1.14	1.15	1.14	1.18	1.17	1.19	1.13	1.12	1.17	1.17	1.16	1.12						
160	1.17	1.20	1.18	1.23	1.21	1.23	1.18	1.16	1.20	1.17	1.19	1.16						
165	1.22	1.24	1.22	1.26	1.24	1.27	1.22	1.20	1.24	1.21	1.23	1.20						
170	1.25	1.26	1.26	1.29	1.27	1.29	1.26	1.24	1.26	1.25	1.27	1.24						
175	1.28	1.29	1.28	1.30	1.29	1.31	1.29	1.27	1.29	1.28	1.30	1.27						
180	1.29	1.29	1.29	1.30	1.31	1.31	1.29	1.28	1.30	1.30	1.31	1.30						

C Range: 0 - 360DEG  
C Interval: 30.0DEG  
Test Speed: HIGH  
Temperature:25.3℃  
Operators:  
Test Date:2025-02-25

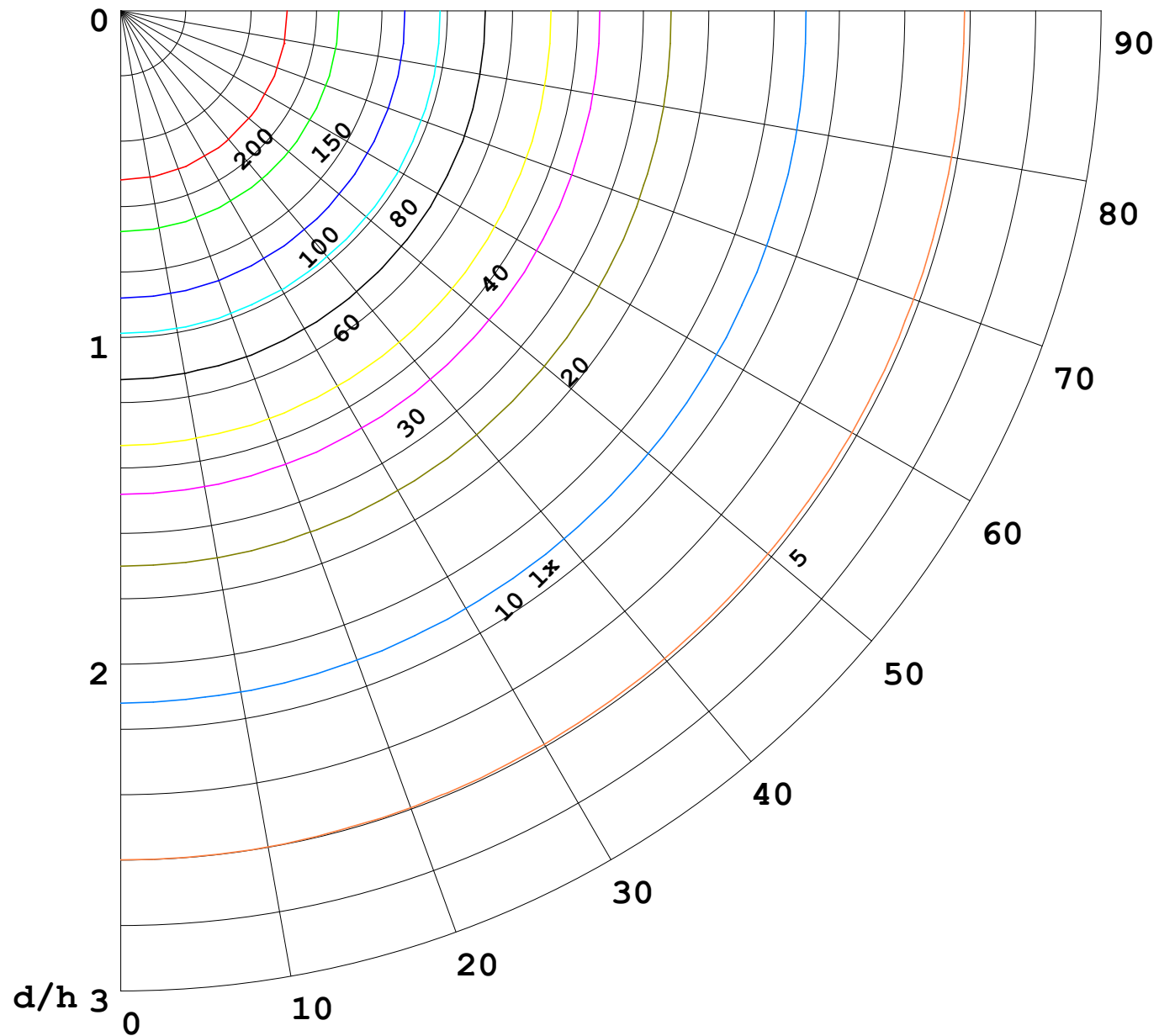
γ Range: 0 - 180DEG  
γ Interval: 1.0DEG  
Test System:EVERFINE GO-2000B\_V1 SYSTEM V2.00.488  
Humidity:65.0%  
Test Distance:6.360m [K=1.0000]  
Remarks:

I (cd)



1000 lm

$\kappa = 1$



F = 1000 lm  
 K = 0.7  
 Hcc = 0.8 m  
 Hfc = 0.0 m  
 Eave = 100 lx

	Pcc	Pw	Pfc
—————	70	50	30
—————	50	30	20

