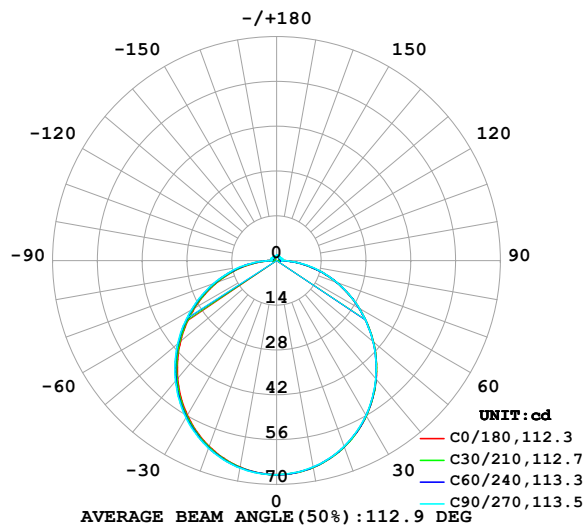


LUMINAIRE PHOTOMETRIC TEST REPORT

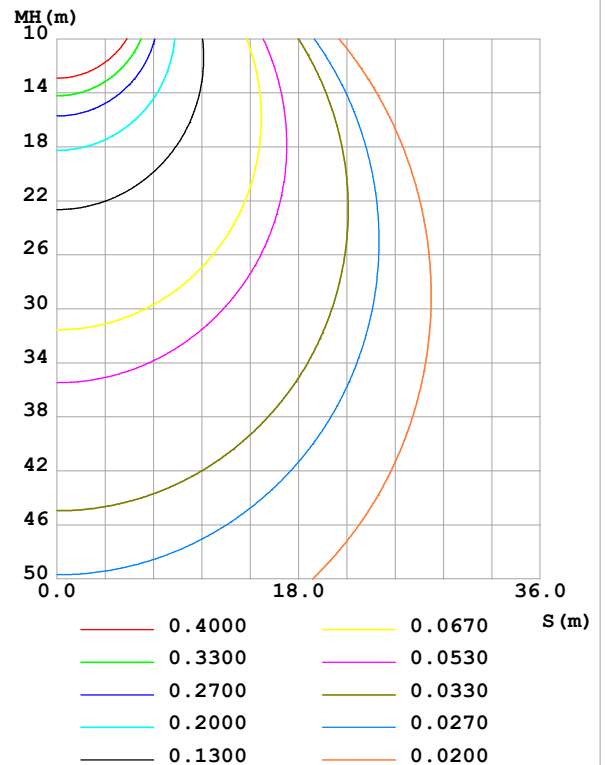
Test:U:24.00V I:0.2017A P:4.841W PF:1.000 Freq:0Hz Lamp Flux:205.897x1 lm		
NAME: SF16-24V-5050-72-RGBW(5000K)-80-W	TYPE:	WEIGHT:
SPEC.:	DIM.: Length=1m	SERIAL No.:
MFR.: OLympia lighting	SUR.:	Shielding Angle:

DATA OF LAMP		PHOTOMETRIC DATA Eff: 42.53 lm/W			
MODEL	5050	I _{max} (cd)	66.92	S/MH(C0/180)	1.24
NOMINAL POWER(W)		LOR(%)	100.0	S/MH(C90/270)	1.26
RATED VOLTAGE(V)	24	TOTAL FLUX(lm)	205.90	η UP,DN(C0-180)	2.0,47.7
NOMINAL FLUX(lm)	205.897	CIE CLASS	DIRECT	η UP,DN(C180-360)	2.1,48.2
LAMPS INSIDE	1	η up (%)	4.1	CIBSE SHR NOM	1.25
TEST VOLTAGE(V)		η down (%)	95.9	CIBSE SHR MAX	1.35

LUMINOUS INTENSITY DISTRIBUTION DIAGRAM



C0 PLANE ISOLUX DIAGRAM (UNIT:lx)



C Range: 0 - 360DEG
C Interval: 30.0DEG
Test Speed: HIGH
Temperature:25.3℃
Operators:
Test Date:2025-02-25

γ Range: 0 - 180DEG
γ Interval: 1.0DEG
Test System:EVERFINE GO-2000B_V1 SYSTEM V2.00.488
Humidity:65.0%
Test Distance:6.360m [K=1.0000]
Remarks:

ZONAL FLUX DIAGRAM

ZONAL FLUX DIAGRAM:

γ	C0	C45	C90	C135	C180	C225	C270	C315	γ	Φ zone	Φ total	%lum, lamp
10	65.68	65.64	65.55	65.64	65.58	65.72	65.86	65.73	0- 10	6.329	6.329	3.07,3.07
20	61.94	61.91	61.82	61.97	61.78	62.11	62.36	62.09	10- 20	18.10	24.42	11.9,11.9
30	56.09	56.01	55.89	56.14	55.84	56.33	56.71	56.27	20- 30	27.34	51.77	25.1,25.1
40	48.43	48.34	48.23	48.52	48.15	48.74	49.21	48.68	30- 40	32.87	84.64	41.1,41.1
50	39.49	39.43	39.36	39.62	39.21	39.88	40.41	39.80	40- 50	34.12	118.8	57.7,57.7
60	29.83	29.79	29.80	29.99	29.57	30.28	30.81	30.18	50- 60	31.21	150.0	72.8,72.8
70	19.93	19.94	20.06	20.15	19.73	20.40	20.91	20.27	60- 70	24.86	174.8	84.9,84.9
80	10.12	10.17	10.55	10.42	9.993	10.69	11.50	10.54	70- 80	16.15	191.0	92.8,92.8
90	2.364	2.015	1.632	2.136	2.267	2.357	1.908	2.238	80- 90	6.405	197.4	95.9,95.9
100	0.9271	1.143	1.756	1.109	0.7650	1.385	1.892	1.424	90-100	1.553	198.9	96.6,96.6
110	0.9646	1.153	1.681	1.181	0.8664	1.411	1.892	1.377	100-110	1.375	200.3	97.3,97.3
120	1.054	1.192	1.534	1.232	0.9677	1.367	1.748	1.335	110-120	1.290	201.6	97.9,97.9
130	1.167	1.236	1.401	1.269	1.087	1.348	1.626	1.324	120-130	1.165	202.8	98.5,98.5
140	1.272	1.295	1.367	1.322	1.208	1.356	1.543	1.332	130-140	1.019	203.8	99,99
150	1.376	1.393	1.430	1.429	1.330	1.395	1.494	1.377	140-150	0.8566	204.6	99.4,99.4
160	1.477	1.492	1.534	1.527	1.454	1.467	1.482	1.460	150-160	0.6666	205.3	99.7,99.7
170	1.567	1.580	1.615	1.597	1.562	1.565	1.563	1.560	160-170	0.4330	205.7	99.9,99.9
180	1.611	1.614	1.629	1.627	1.605	1.614	1.632	1.624	170-180	0.1524	205.9	100,100
DEG	LUMINOUS INTENSITY:cd									UNIT:lm		

Conical surface Flux(90deg): 101.82 lm

%lum = 49.4%

%lamp = 49.4%

Conical surface Flux(130deg): 163.37 lm

%lum = 79.3%

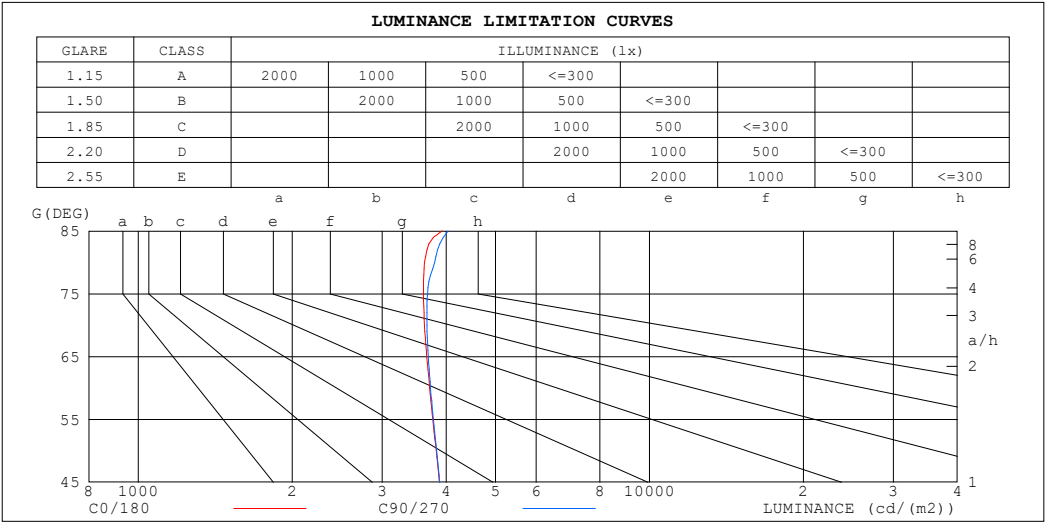
%lamp = 79.3%

C Range: 0 - 360DEG
 C Interval: 30.0DEG
 Test Speed: HIGH
 Temperature:25.3℃
 Operators:
 Test Date:2025-02-25

γ Range: 0 - 180DEG
 γ Interval: 1.0DEG
 Test System:EVERFINE GO-2000B_V1 SYSTEM V2.00.488
 Humidity:65.0%
 Test Distance:6.360m [K=1.0000]
 Remarks:

LUMINANCE LIMITATION CURVES

Test:U:24.00V I:0.2017A P:4.841W PF:1.000 Freq:0Hz Lamp Flux:205.897x1 lm		
NAME: SF16-24V-5050-72-RGBW(5000K)-80-W	TYPE:	WEIGHT:
SPEC.:	DIM.: Length=1m	SERIAL No.:
MFR.: OLympia lighting	SUR.:	Shielding Angle:



LUMINANCE cd/(m2)		
G (DEG)	C0/180	C90/270
85	3929	4035
80	3630	3801
75	3612	3682
70	3628	3668
65	3667	3691
60	3715	3728
55	3768	3777
50	3825	3831
45	3881	3885

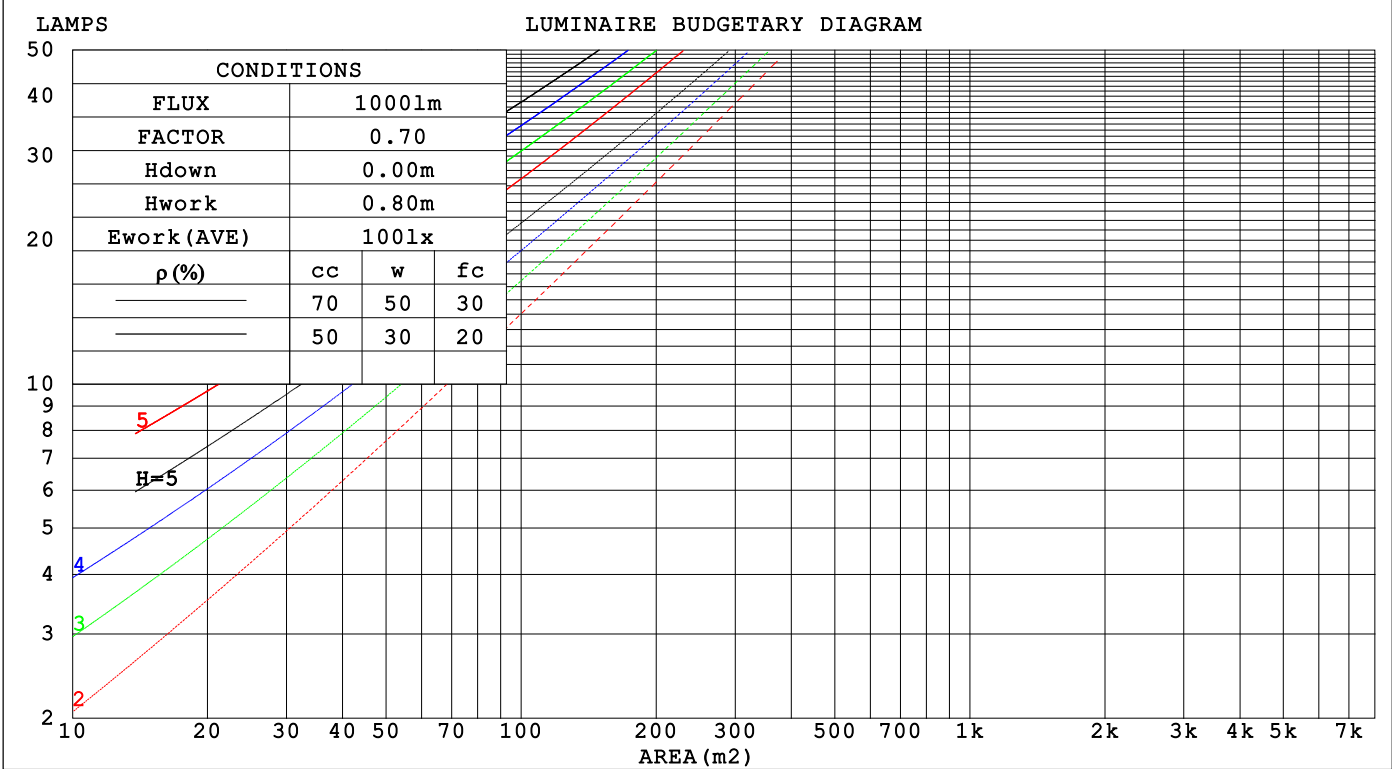
C Range: 0 - 360DEG
C Interval: 30.0DEG
Test Speed: HIGH
Temperature:25.3℃
Operators:
Test Date:2025-02-25

γ Range: 0 - 180DEG
γ Interval: 1.0DEG
Test System:EVERFINE GO-2000B_V1 SYSTEM V2.00.488
Humidity:65.0%
Test Distance:6.360m [K=1.0000]
Remarks:

CU AND LUMINAIRE BUDGETARY ESTIMATE DIAGRAM

Test:U:24.00V I:0.2017A P:4.841W PF:1.000 Freq:0Hz		
Lamp Flux:205.897x1 lm		
NAME: SF16-24V-5050-72-RGBW(5000K)-80-W	TYPE:	WEIGHT:
SPEC.:	DIM.: Length=1m	SERIAL No.:
MFR.: OLYMPIA lighting	SUR.:	Shielding Angle:

pcc	80%			70%			50%			30%			10%			0
pw	50%	30%	10%	50%	30%	10%	50%	30%	10%	50%	30%	10%	50%	30%	10%	0
pfc	20%			20%			20%			20%			20%			0
RCR	RCR:Room Cavity Ratio															



C Range: 0 - 360DEG
C Interval: 30.0DEG
Test Speed: HIGH
Temperature:25.3℃
Operators:
Test Date:2025-02-25

γ Range: 0 - 180DEG
γ Interval: 1.0DEG
Test System:EVERFINE GO-2000B_V1 SYSTEM V2.00.488
Humidity:65.0%
Test Distance:6.360m [K=1.0000]
Remarks:

WEC AND CCEC

Test:U:24.00V I:0.2017A P:4.841W PF:1.000 Freq:0Hz Lamp Flux:205.897x1 lm		
NAME: SF16-24V-5050-72-RGBW(5000K)-80-W	TYPE:	WEIGHT:
SPEC.:	DIM.: Length=1m	SERIAL No.:
MFR.: OLYMPIA lighting	SUR.:	Shielding Angle:

pcc	80%			70%			50%			30%			10%			0														
pw	50%	30%	10%	50%	30%	10%	50%	30%	10%	50%	30%	10%	50%	30%	10%	0														
pfc	20%			20%			20%			20%			20%			0														
RCR	RCR:Room Cavity Ratio															Wall Exitance Coefficients(WEC)														
0.0																														
1.0	.327	.186	.059	.319	.182	.058	.303	.174	.056	.289	.167	.053	.276	.160	.052															
2.0	.302	.165	.051	.294	.162	.050	.280	.156	.048	.267	.150	.047	.255	.144	.046															
3.0	.276	.147	.044	.270	.144	.043	.257	.139	.042	.246	.135	.041	.235	.130	.040															
4.0	.253	.132	.039	.247	.129	.038	.236	.125	.037	.226	.121	.037	.216	.117	.036															
5.0	.233	.119	.034	.228	.117	.034	.218	.113	.033	.209	.110	.033	.200	.107	.032															
6.0	.215	.108	.031	.211	.106	.031	.202	.103	.030	.193	.101	.030	.186	.098	.029															
7.0	.200	.099	.028	.196	.098	.028	.188	.095	.027	.180	.092	.027	.173	.090	.026															
8.0	.187	.091	.026	.183	.090	.025	.175	.088	.025	.169	.085	.025	.162	.083	.024															
9.0	.175	.084	.024	.171	.083	.023	.165	.081	.023	.158	.079	.023	.152	.077	.022															
10.0	.164	.079	.022	.161	.078	.022	.155	.076	.021	.149	.074	.021	.144	.072	.021															

pcc	80%			70%			50%			30%			10%			0
pw	50%	30%	10%	50%	30%	10%	50%	30%	10%	50%	30%	10%	50%	30%	10%	0
pfc	20%			20%			20%			20%			20%			0
RCR	RCR:Room Cavity Ratio						Ceiling Cavity Exitance Coefficients (CCEC)									
0.0	.222	.222	.222	.190	.190	.190	.129	.129	.129	.074	.074	.074	.024	.024	.024	
1.0	.213	.188	.165	.182	.161	.142	.125	.111	.098	.072	.064	.057	.023	.021	.018	
2.0	.206	.164	.129	.176	.141	.111	.121	.098	.078	.070	.057	.046	.022	.018	.015	
3.0	.198	.146	.106	.170	.126	.092	.116	.088	.064	.067	.051	.038	.022	.017	.012	
4.0	.190	.133	.090	.163	.115	.078	.112	.080	.055	.065	.047	.033	.021	.015	.011	
5.0	.183	.123	.079	.157	.106	.069	.108	.074	.049	.063	.044	.029	.020	.014	.010	
6.0	.175	.115	.071	.151	.099	.062	.104	.070	.044	.060	.041	.026	.019	.013	.009	
7.0	.168	.108	.066	.145	.094	.057	.100	.066	.041	.058	.039	.024	.019	.013	.008	
8.0	.162	.102	.061	.139	.089	.053	.096	.062	.038	.056	.037	.023	.018	.012	.007	
9.0	.156	.097	.058	.134	.084	.050	.093	.059	.036	.054	.035	.021	.018	.012	.007	
10.0	.150	.093	.055	.129	.081	.048	.090	.057	.034	.052	.034	.020	.017	.011	.007	

C Range: 0 - 360DEG
C Interval: 30.0DEG
Test Speed: HIGH
Temperature:25.3℃
Operators:
Test Date:2025-02-25

γ Range: 0 - 180DEG
γ Interval: 1.0DEG
Test System:EVERFINE GO-2000B_V1 SYSTEM V2.00.488
Humidity:65.0%
Test Distance:6.360m [K=1.0000]
Remarks:

UGR(Unified Glare Rating) Table

Test:U:24.00V I:0.2017A P:4.841W PF:1.000 Freq:0Hz Lamp Flux:205.897x1 lm											
NAME: SF16-24V-5050-72-RGBW(5000K)-80-W						TYPE:		WEIGHT:			
SPEC.:						DIM.: Length=1m		SERIAL No.:			
MFR.: OLympia lighting						SUR.:		Shielding Angle:			
ceiling/cavity	0.7	0.7	0.5	0.5	0.3	0.7	0.7	0.5	0.5	0.3	
walls	0.5	0.3	0.5	0.3	0.3	0.5	0.3	0.5	0.3	0.3	
working plane	0.2	0.2	0.2	0.2	0.2	0.2	0.2	0.2	0.2	0.2	
Room dimensions		Viewed crosswise					Viewed endwise				
x = 2H y = 2H	2H	22.7	24.2	23.0	24.4	24.7	22.7	24.2	23.0	24.4	24.7
	3H	24.4	25.7	24.7	26.0	26.4	24.4	25.8	24.7	26.1	26.4
	4H	25.1	26.4	25.5	26.7	27.1	25.1	26.4	25.5	26.8	27.1
	6H	25.7	27.0	26.1	27.3	27.7	25.8	27.0	26.2	27.4	27.7
	8H	26.0	27.2	26.4	27.5	27.9	26.1	27.3	26.5	27.6	28.0
	12H	26.2	27.3	26.6	27.7	28.1	26.3	27.4	26.7	27.8	28.2
4H	2H	23.3	24.6	23.7	24.9	25.3	23.3	24.6	23.7	25.0	25.3
	3H	25.2	26.3	25.6	26.7	27.1	25.2	26.4	25.6	26.7	27.1
	4H	26.1	27.1	26.5	27.5	27.9	26.1	27.2	26.6	27.6	28.0
	6H	26.8	27.8	27.3	28.2	28.7	26.9	27.9	27.4	28.3	28.7
	8H	27.2	28.0	27.6	28.5	29.0	27.3	28.1	27.7	28.6	29.0
	12H	27.4	28.2	27.9	28.7	29.2	27.5	28.3	28.0	28.8	29.3
8H	4H	26.4	27.3	26.9	27.7	28.2	26.4	27.3	26.9	27.8	28.2
	6H	27.4	28.1	27.9	28.6	29.1	27.4	28.2	27.9	28.6	29.2
	8H	27.8	28.4	28.3	28.9	29.5	27.9	28.5	28.4	29.0	29.6
	12H	28.2	28.7	28.7	29.3	29.8	28.3	28.8	28.8	29.4	29.9
12H	4H	26.4	27.2	26.9	27.7	28.2	26.5	27.3	27.0	27.7	28.2
	6H	27.5	28.1	28.0	28.6	29.2	27.5	28.2	28.1	28.7	29.2
	8H	28.0	28.5	28.5	29.0	29.6	28.0	28.6	28.6	29.1	29.7
Variations with the observer position at spacings(CIE Pub.117):											
S = 1.0H		+ 0.1 / - 0.2					+ 0.1 / - 0.2				
1.5H		+ 0.2 / - 0.3					+ 0.2 / - 0.3				
2.0H		+ 0.1 / - 0.3					+ 0.1 / - 0.3				

CIE Pub.117, 205.9 lm Total Lamp Luminous Flux Correct (8log(F/F0) = -5.5)
Area: 0.016 m2

C Range: 0 - 360DEG
C Interval: 30.0DEG
Test Speed: HIGH
Temperature:25.3℃
Operators:
Test Date:2025-02-25

γ Range: 0 - 180DEG
γ Interval: 1.0DEG
Test System:EVERFINE GO-2000B_V1 SYSTEM V2.00.488
Humidity:65.0%
Test Distance:6.360m [K=1.0000]
Remarks:

UTILIZATION FACTORS TABLE

Test:U:24.00V I:0.2017A P:4.841W PF:1.000 Freq:0Hz Lamp Flux:205.897x1 lm		
NAME: SF16-24V-5050-72-RGBW(5000K)-80-W	TYPE:	WEIGHT:
SPEC.:	DIM.: Length=1m	SERIAL No.:
MFR.: OLympia lighting	SUR.:	Shielding Angle:

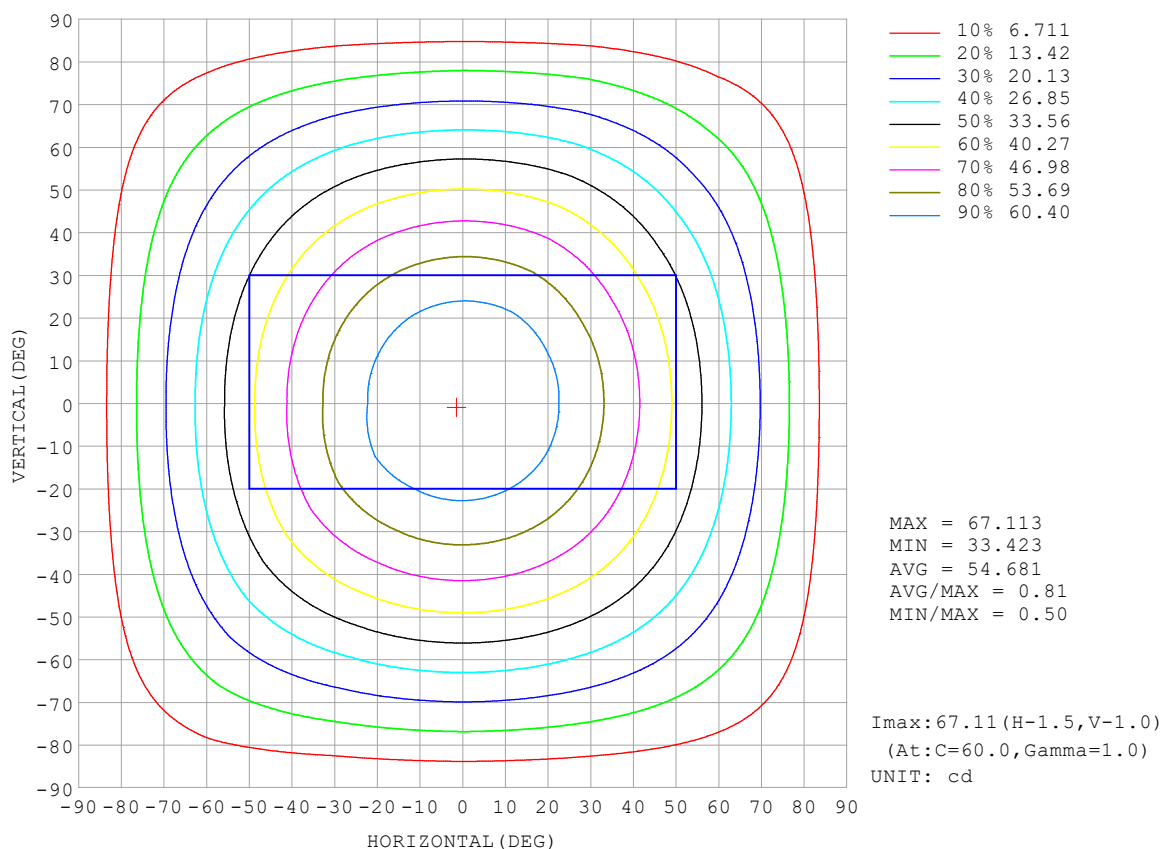
REFLECTANCE										
Ceiling	0.8	0.8	0.8	0.7	0.7	0.7	0.5	0.5	0.5	0
Walls	0.7	0.5	0.3	0.7	0.5	0.3	0.7	0.5	0.3	0
Working plane	0.2	0.2	0.2	0.2	0.2	0.2	0.2	0.2	0.2	0
ROOM INDEX	UTILIZATION FACTORS (PERCENT) $k(RI) \times RCR = 5$									
$k = 0.60$	55	44	37	55	43	37	53	43	36	30
0.80	65	53	46	64	53	46	62	52	45	38
1.00	74	62	54	72	61	54	69	62	53	46
1.25	81	70	62	79	69	62	76	67	61	53
1.50	86	75	68	84	74	67	80	72	66	58
2.00	93	83	77	90	82	76	86	79	74	65
2.50	97	88	82	94	87	81	90	83	78	69
3.00	100	93	87	97	91	85	93	87	83	73
4.00	104	98	93	101	96	91	96	92	88	78
5.00	107	101	97	104	99	95	99	95	92	81
ROOM INDEX	UF (total)									Direct
According to DIN EN 13032-2 2004			Suspended					SHRNOM = 1.25		

C Range: 0 - 360DEG
 C Interval: 30.0DEG
 Test Speed: HIGH
 Temperature: 25.3°C
 Operators:
 Test Date: 2025-02-25

γ Range: 0 - 180DEG
 γ Interval: 1.0DEG
 Test System: EVERFINE GO-2000B_V1 SYSTEM V2.00.488
 Humidity: 65.0%
 Test Distance: 6.360m [K=1.0000]
 Remarks:

ISOCANDELA DIAGRAM

Test:U:24.00V I:0.2017A P:4.841W PF:1.000 Freq:0Hz Lamp Flux:205.897x1 lm		
NAME: SF16-24V-5050-72-RGBW(5000K)-80-W	TYPE:	WEIGHT:
SPEC.:	DIM.: Length=1m	SERIAL No.:
MFR.: OLympia lighting	SUR.:	Shielding Angle:

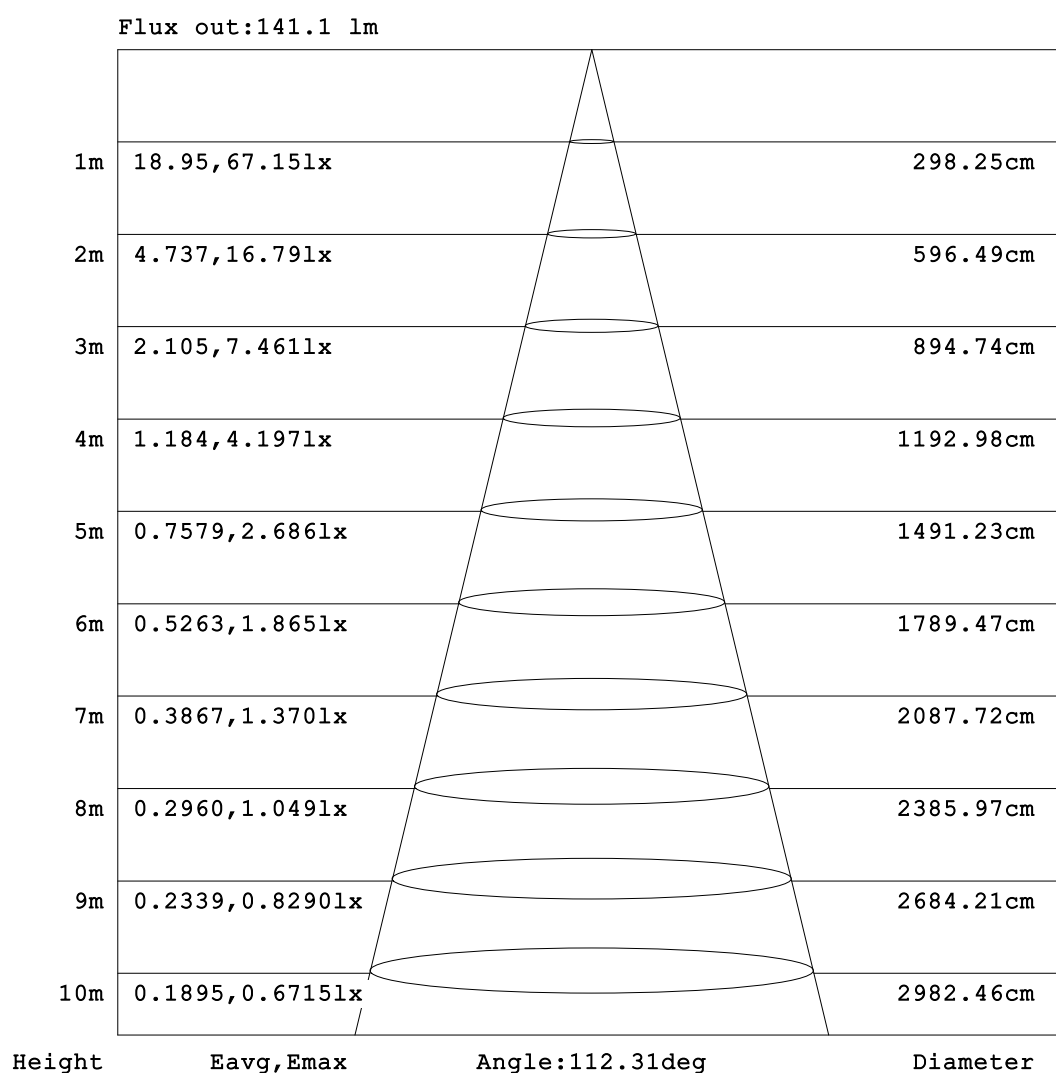


C Range: 0 - 360DEG
C Interval: 30.0DEG
Test Speed: HIGH
Temperature: 25.3°C
Operators:
Test Date: 2025-02-25

γ Range: 0 - 180DEG
γ Interval: 1.0DEG
Test System: EVERFINE GO-2000B_V1 SYSTEM V2.00.488
Humidity: 65.0%
Test Distance: 6.360m [K=1.0000]
Remarks:

AAI Figure

Test:U:24.00V I:0.2017A P:4.841W PF:1.000 Freq:0Hz Lamp Flux:205.897x1 lm		
NAME: SF16-24V-5050-72-RGBW(5000K)-80-W	TYPE:	WEIGHT:
SPEC.:	DIM.: Length=1m	SERIAL No.:
MFR.: OLympia lighting	SUR.:	Shielding Angle:



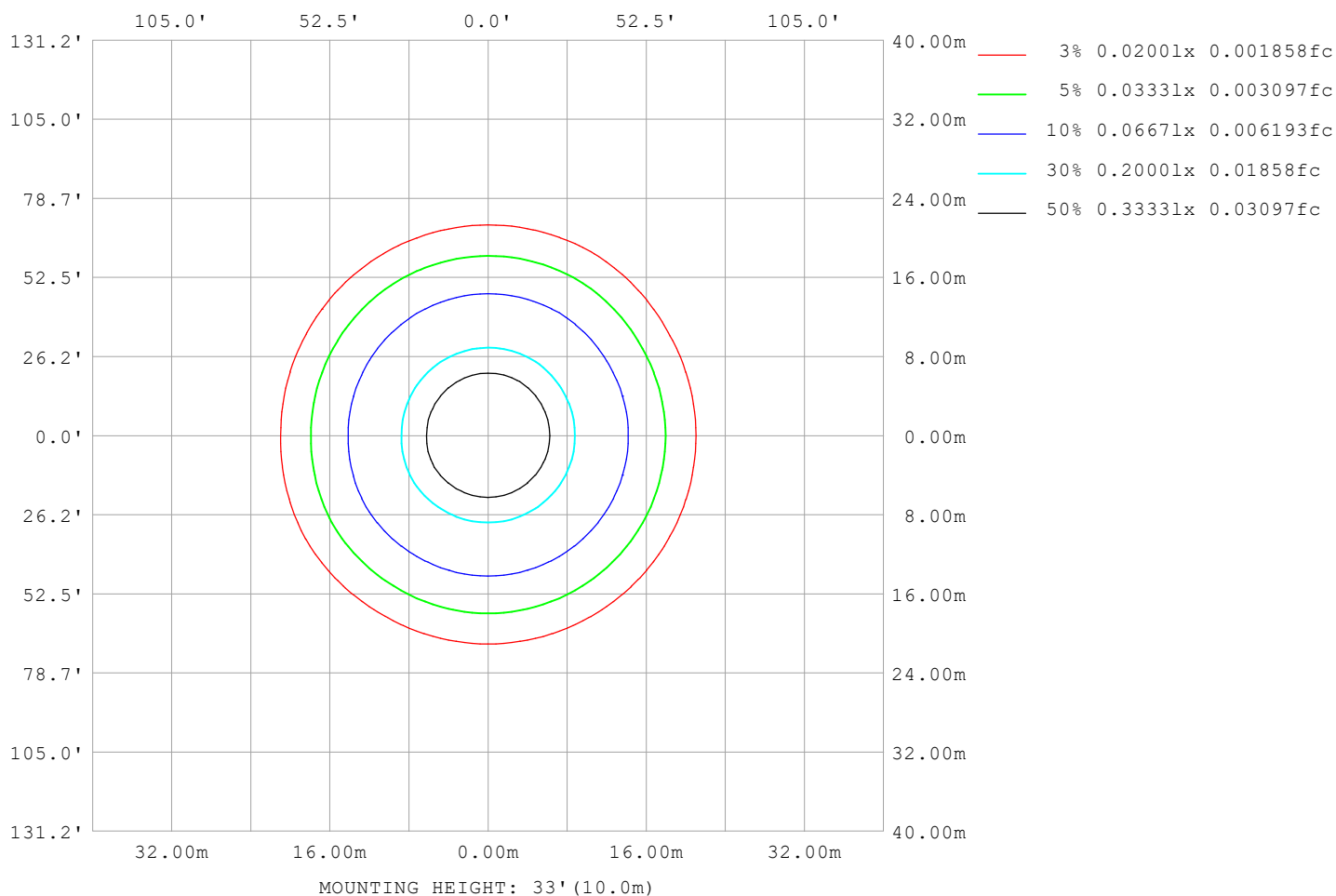
Note:The Curves indicate the illuminated area and the average illumination when the luminaire is at different distance.

C Range: 0 - 360DEG
C Interval: 30.0DEG
Test Speed: HIGH
Temperature:25.3℃
Operators:
Test Date:2025-02-25

γ Range: 0 - 180DEG
γ Interval: 1.0DEG
Test System:EVERFINE GO-2000B_V1 SYSTEM V2.00.488
Humidity:65.0%
Test Distance:6.360m [K=1.0000]
Remarks:

ISOLUX DIAGRAM

Test:U:24.00V I:0.2017A P:4.841W PF:1.000 Freq:0Hz Lamp Flux:205.897x1 lm		
NAME: SF16-24V-5050-72-RGBW(5000K)-80-W	TYPE:	WEIGHT:
SPEC.:	DIM.: Length=1m	SERIAL No.:
MFR.: OLympia lighting	SUR.:	Shielding Angle:



C Range: 0 - 360DEG
C Interval: 30.0DEG
Test Speed: HIGH
Temperature: 25.3°C
Operators:
Test Date: 2025-02-25

γ Range: 0 - 180DEG
γ Interval: 1.0DEG
Test System: EVERFINE GO-2000B_V1 SYSTEM V2.00.488
Humidity: 65.0%
Test Distance: 6.360m [K=1.0000]
Remarks:

LED Avg.L Report

Test:U:24.00V I:0.2017A P:4.841W PF:1.000 Freq:0Hz Lamp Flux:205.897x1 lm		
NAME: SF16-24V-5050-72-RGBW(5000K)-80-W	TYPE:	WEIGHT:
SPEC.:	DIM.: Length=1m	SERIAL No.:
MFR.: OLympia lighting	SUR.:	Shielding Angle:

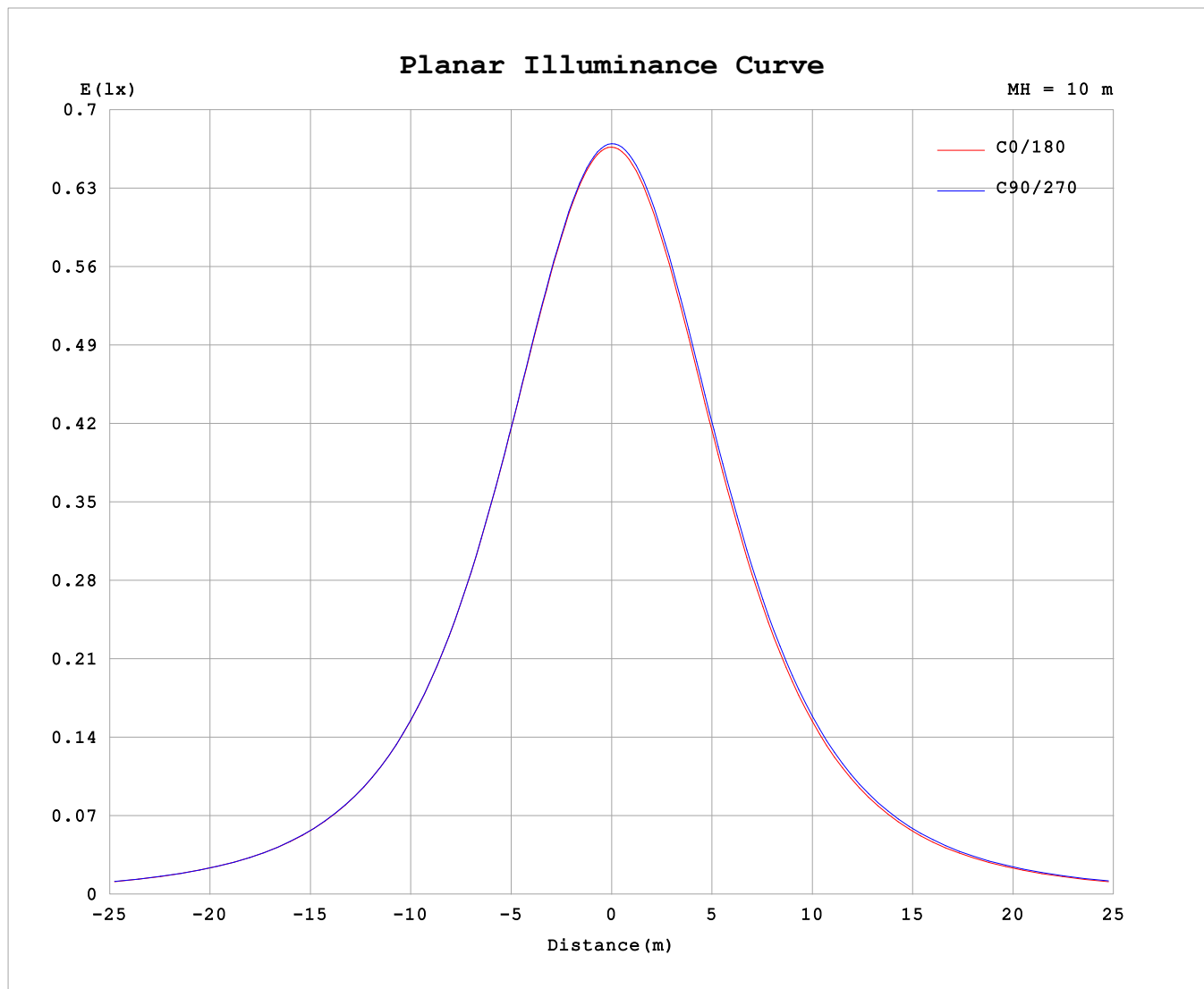
AvgL	cd/m2
L_0~180 (65) av	3663
L_0~180 (75) av	3604
L_0~180 (85) av	3872
L_90~270 (65) av	3757
L_90~270 (75) av	3770
L_90~270 (85) av	4320
L_45 (65) av	3717
L_45 (75) av	3690
L_45 (85) av	4044

Standard: GB/T 29293-2012

C Range: 0 - 360DEG
C Interval: 30.0DEG
Test Speed: HIGH
Temperature:25.3℃
Operators:
Test Date:2025-02-25

γ Range: 0 - 180DEG
γ Interval: 1.0DEG
Test System:EVERFINE GO-2000B_V1 SYSTEM V2.00.488
Humidity:65.0%
Test Distance:6.360m [K=1.0000]
Remarks:

Planar Illuminance Curve



C Range: 0 - 360DEG
C Interval: 30.0DEG
Test Speed: HIGH
Temperature: 25.3 °C
Operators:
Test Date: 2025-02-25

γ Range: 0 - 180DEG
 γ Interval: 1.0DEG
Test System: EVERFINE GO-2000B_V1 SYSTEM V2.00.488
Humidity: 65.0%
Test Distance: 6.360m [K=1.0000]
Remarks:

LUMINOUS DISTRIBUTION INTENSITY DATA

Test:U:24.00V I:0.2017A P:4.841W PF:1.000 Freq:0Hz Lamp Flux:205.897x1 lm																	
NAME: SF16-24V-5050-72-RGBW(5000K)-80-W									TYPE:						WEIGHT:		
SPEC.:									DIM.: Length=1m						SERIAL No.:		
MFR.: Olym pia lighting									SUR.:						Shielding Angle:		

Table--1

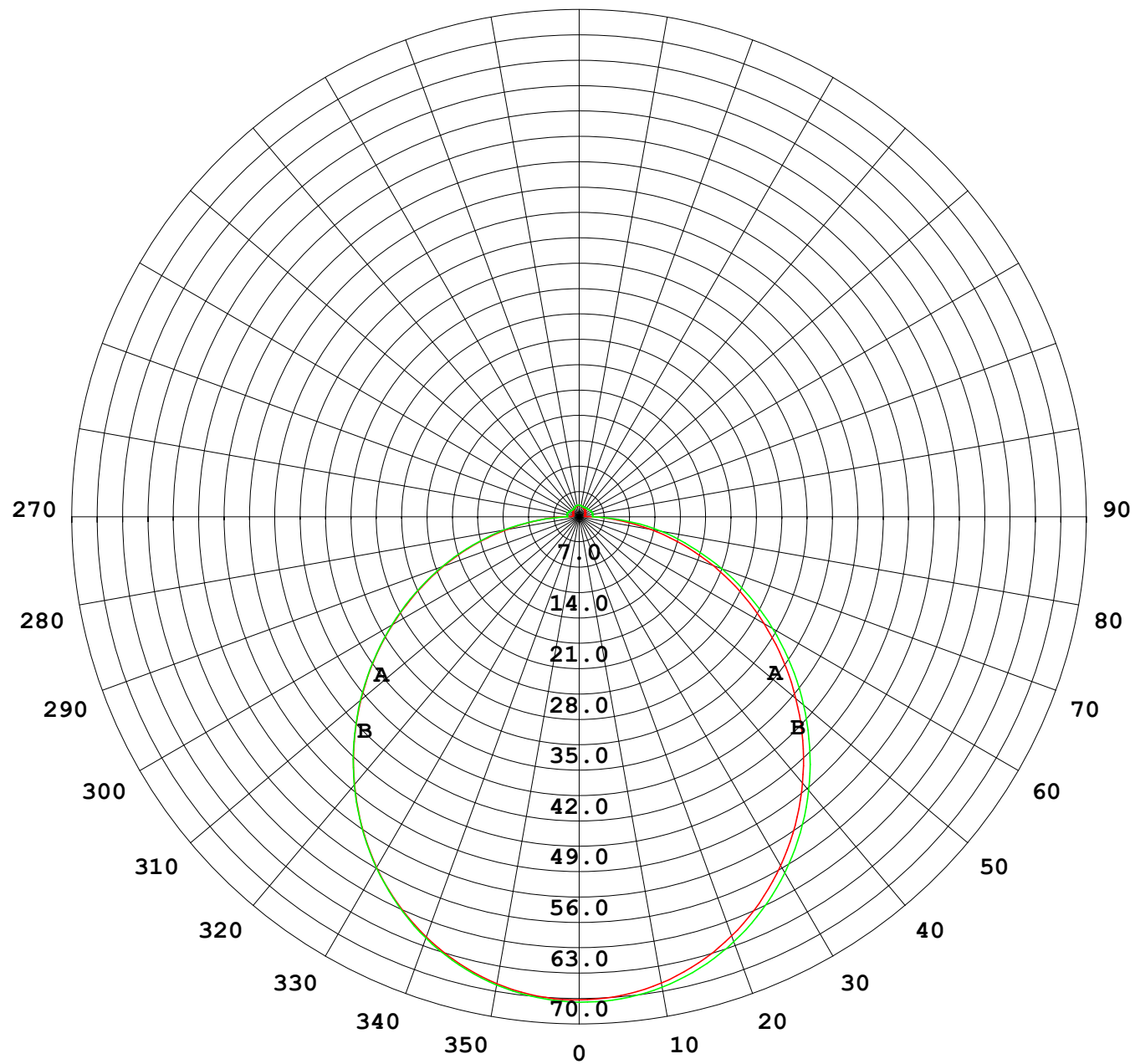
UNIT: cd

C (DEG) γ (DEG)	0	30	60	90	120	150	180	210	240	270	300	330						
0	66.9	66.9	66.9	66.9	66.9	66.9	66.9	66.9	66.9	66.9	66.9	66.9						
5	66.6	66.6	66.6	66.5	66.5	66.6	66.6	66.6	66.6	66.7	66.7	66.6						
10	65.7	65.7	65.6	65.6	65.5	65.7	65.6	65.7	65.8	65.9	65.9	65.6						
15	64.1	64.1	64.0	64.0	63.9	64.3	64.0	64.1	64.3	64.4	64.4	64.0						
20	61.9	62.0	61.9	61.8	61.8	62.2	61.8	62.0	62.3	62.4	62.4	61.8						
25	59.3	59.2	59.2	59.1	59.1	59.5	59.1	59.3	59.6	59.8	59.8	59.1						
30	56.1	56.1	56.0	55.9	55.9	56.4	55.8	56.1	56.5	56.7	56.7	55.9						
35	52.4	52.4	52.3	52.2	52.2	52.8	52.2	52.5	52.9	53.2	53.1	52.2						
40	48.4	48.4	48.3	48.2	48.2	48.8	48.1	48.5	49.0	49.2	49.2	48.2						
45	44.1	44.1	43.9	43.9	43.8	44.5	43.8	44.2	44.7	44.9	44.9	43.8						
50	39.5	39.5	39.4	39.4	39.3	40.0	39.2	39.6	40.2	40.4	40.4	39.2						
55	34.7	34.7	34.6	34.6	34.5	35.2	34.4	34.8	35.4	35.7	35.6	34.4						
60	29.8	29.8	29.8	29.8	29.6	30.4	29.6	30.0	30.6	30.8	30.8	29.6						
65	24.9	24.9	24.9	24.9	24.7	25.4	24.6	25.0	25.7	25.9	25.9	24.6						
70	19.9	19.9	19.9	20.1	19.8	20.5	19.7	20.1	20.7	20.9	20.9	19.6						
75	15.0	15.0	15.1	15.2	14.9	15.6	14.8	15.2	15.8	16.0	16.0	14.7						
80	10.1	10.1	10.2	10.6	10.1	10.7	9.99	10.3	11.1	11.5	11.3	9.81						
85	5.50	5.40	5.41	5.62	5.31	5.92	5.30	5.53	6.22	6.43	6.25	5.14						
90	2.36	2.17	1.86	1.63	1.82	2.45	2.27	2.37	2.34	1.91	2.35	2.13						
95	0.94	0.93	1.35	1.71	1.29	0.89	0.79	1.12	1.61	1.88	1.66	1.21						
100	0.93	0.93	1.35	1.76	1.34	0.88	0.76	1.11	1.66	1.89	1.66	1.19						
105	0.93	0.96	1.32	1.74	1.37	0.93	0.82	1.14	1.68	1.89	1.65	1.17						
110	0.96	0.99	1.31	1.68	1.38	0.98	0.87	1.15	1.67	1.89	1.59	1.16						
115	0.99	1.04	1.31	1.59	1.38	1.04	0.92	1.16	1.59	1.83	1.54	1.16						
120	1.05	1.08	1.30	1.53	1.36	1.10	0.97	1.18	1.55	1.75	1.51	1.16						
125	1.11	1.15	1.28	1.46	1.34	1.16	1.03	1.19	1.52	1.68	1.48	1.16						
130	1.17	1.19	1.28	1.40	1.32	1.22	1.09	1.21	1.49	1.63	1.46	1.19						
135	1.22	1.25	1.28	1.36	1.32	1.27	1.15	1.23	1.46	1.59	1.43	1.21						
140	1.27	1.30	1.29	1.37	1.32	1.33	1.21	1.26	1.45	1.54	1.42	1.25						
145	1.32	1.35	1.33	1.38	1.36	1.37	1.27	1.29	1.45	1.51	1.42	1.29						
150	1.38	1.40	1.39	1.43	1.42	1.44	1.33	1.34	1.45	1.49	1.43	1.33						
155	1.43	1.45	1.44	1.49	1.47	1.49	1.39	1.40	1.46	1.48	1.44	1.39						
160	1.48	1.50	1.49	1.53	1.52	1.54	1.45	1.44	1.49	1.48	1.47	1.45						
165	1.53	1.54	1.53	1.58	1.56	1.58	1.51	1.50	1.54	1.52	1.53	1.50						
170	1.57	1.58	1.58	1.61	1.59	1.60	1.56	1.55	1.58	1.56	1.57	1.55						
175	1.59	1.61	1.60	1.63	1.62	1.63	1.59	1.58	1.62	1.60	1.61	1.59						
180	1.61	1.61	1.62	1.63	1.63	1.63	1.60	1.61	1.62	1.63	1.63	1.62						

C Range: 0 - 360DEG
C Interval: 30.0DEG
Test Speed: HIGH
Temperature:25.3℃
Operators:
Test Date:2025-02-25

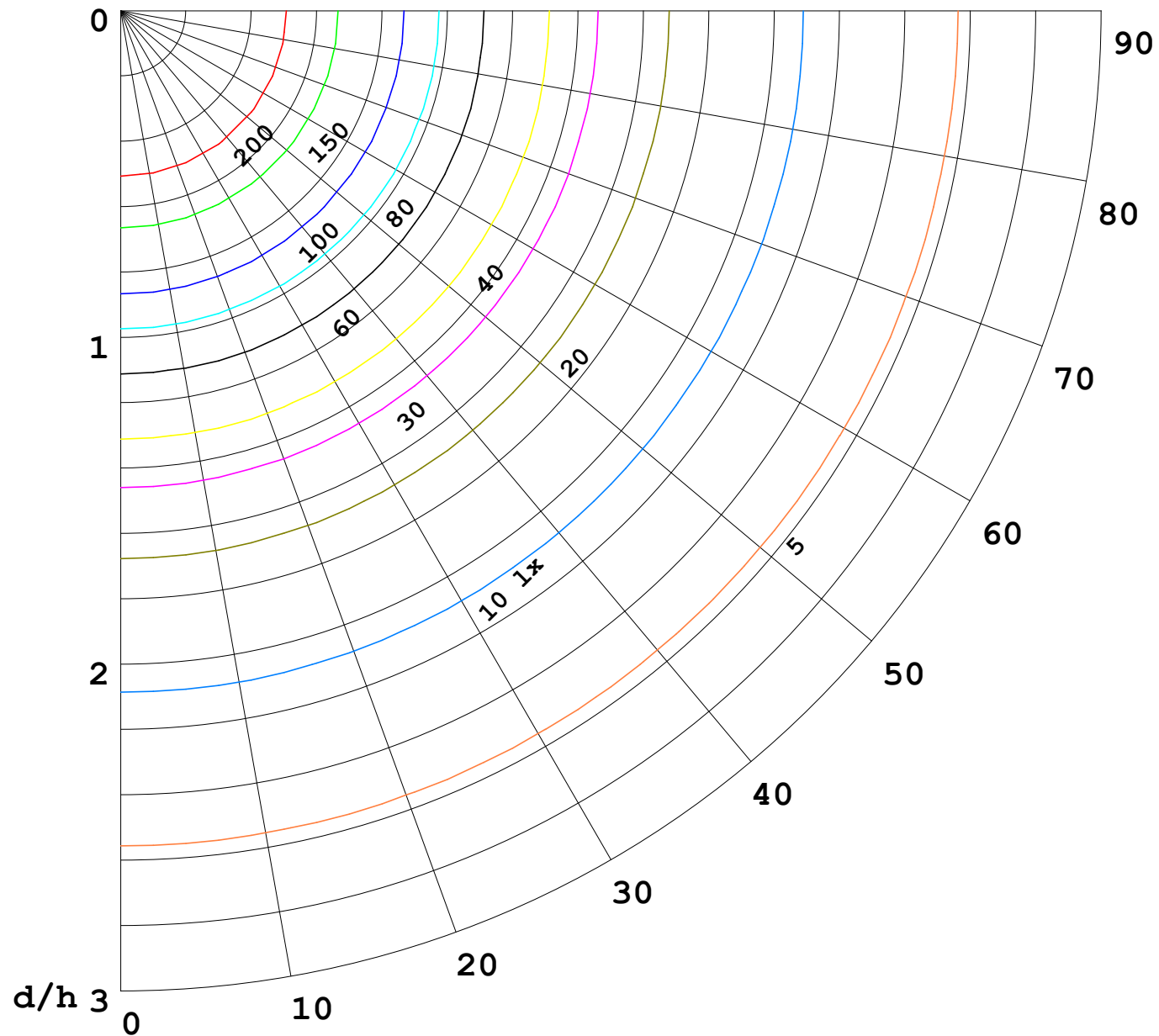
γ Range: 0 - 180DEG
γ Interval: 1.0DEG
Test System:EVERFINE GO-2000B_V1 SYSTEM V2.00.488
Humidity:65.0%
Test Distance:6.360m [K=1.0000]
Remarks:

I (cd)



1000 lm

$\kappa = 1$



F = 1000 lm
 K = 0.7
 Hcc = 0.8 m
 Hfc = 0.0 m
 Eave = 100 lx

	Pcc	Pw	Pfc
—————	70	50	30
—————	50	30	20

