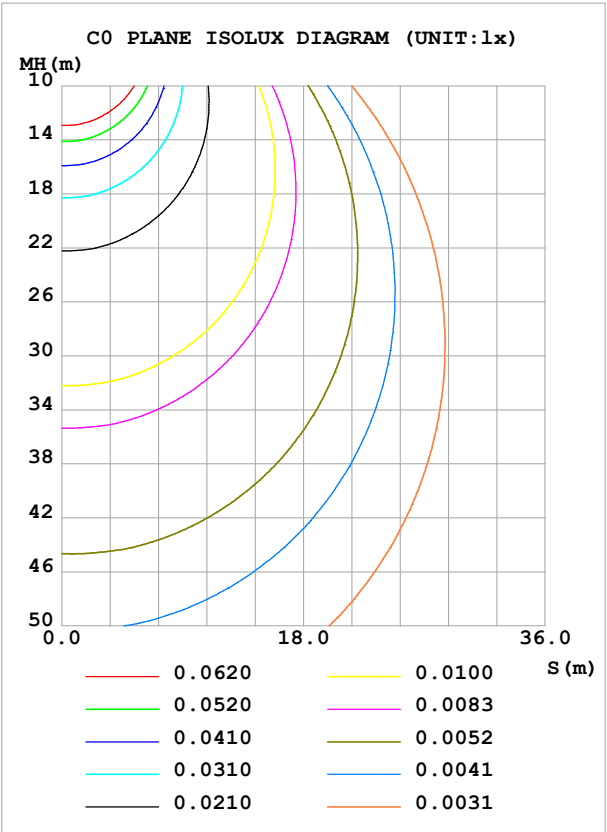
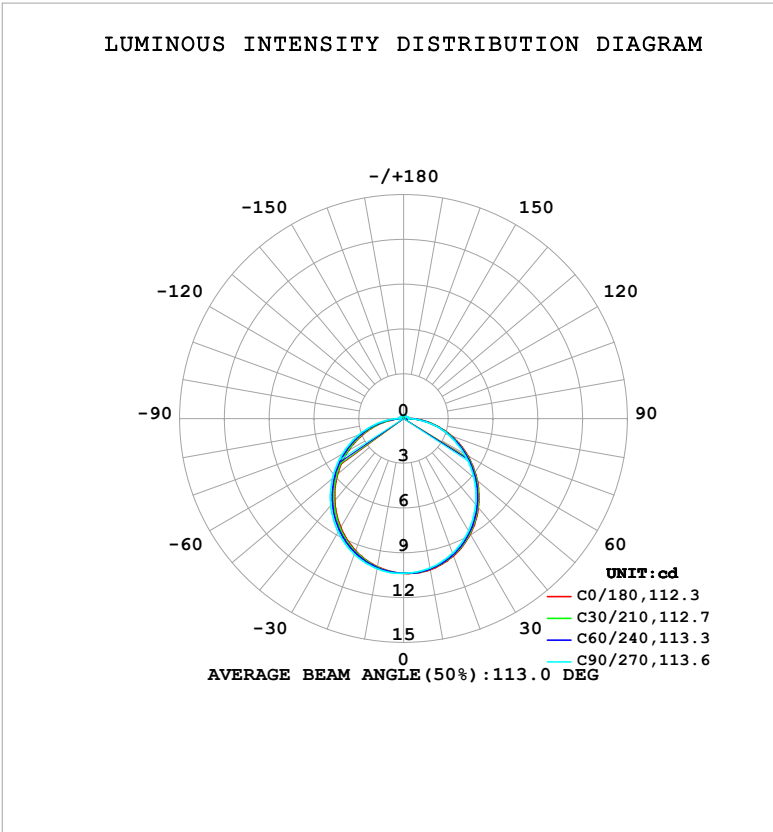


LUMINAIRE PHOTOMETRIC TEST REPORT

Test:U:24.00V I:0.1719A P:4.126W PF:1.000 Freq:0Hz Lamp Flux:31.9101x1 lm		
NAME: SF16-24V-5050-72-RGBW(5000K)-80-B	TYPE:	WEIGHT:
SPEC.:	DIM.: Length=1m	SERIAL No.:
MFR.: OLympia lighting	SUR.:	Shielding Angle:

DATA OF LAMP		PHOTOMETRIC DATA				Eff: 7.73 lm/W
MODEL	5050	Imax (cd)	10.38	S/MH(C0/180)	1.22	
NOMINAL POWER(W)		LOR(%)	100.0	S/MH(C90/270)	1.26	
RATED VOLTAGE(V)	24	TOTAL FLUX(lm)	31.910	η UP,DN(C0-180)	2.1,49.3	
NOMINAL FLUX(lm)	31.9101	CIE CLASS	DIRECT	η UP,DN(C180-360)	2.0,46.6	
LAMPS INSIDE	1	η up (%)	4.1	CIBSE SHR NOM	1.25	
TEST VOLTAGE(V)		η down (%)	95.9	CIBSE SHR MAX	1.35	



C Range: 0 - 360DEG  
C Interval: 30.0DEG  
Test Speed: HIGH  
Temperature:25.3℃  
Operators:  
Test Date:2025-02-25

γ Range: 0 - 180DEG  
γ Interval: 1.0DEG  
Test System:EVERFINE GO-2000B\_V1 SYSTEM V2.00.488  
Humidity:65.0%  
Test Distance:6.360m [K=1.0000]  
Remarks:

## ZONAL FLUX DIAGRAM

## ZONAL FLUX DIAGRAM:

$\gamma$	C0	C45	C90	C135	C180	C225	C270	C315	$\gamma$	$\Phi$ zone	$\Phi$ total	%lum, lamp
10	10.29	10.24	10.17	10.21	10.08	10.13	10.22	10.16	0- 10	0.9814	0.9814	3.08,3.08
20	9.785	9.718	9.604	9.673	9.417	9.514	9.669	9.571	10- 20	2.806	3.788	11.9,11.9
30	8.937	8.851	8.704	8.789	8.433	8.567	8.775	8.643	20- 30	4.241	8.029	25.2,25.2
40	7.795	7.697	7.517	7.627	7.189	7.351	7.594	7.444	30- 40	5.099	13.13	41.1,41.1
50	6.445	6.341	6.159	6.261	5.769	5.953	6.229	6.048	40- 50	5.291	18.42	57.7,57.7
60	4.956	4.851	4.676	4.770	4.251	4.441	4.727	4.551	50- 60	4.838	23.26	72.9,72.9
70	3.421	3.325	3.221	3.245	2.731	2.918	3.197	3.010	60- 70	3.852	27.11	85,85
80	1.903	1.804	1.739	1.734	1.228	1.406	1.684	1.490	70- 80	2.506	29.61	92.8,92.8
90	0.5321	0.4245	0.3233	0.3983	0.2101	0.2598	0.2634	0.2828	80- 90	0.9964	30.61	95.9,95.9
100	0.1356	0.1891	0.3089	0.1933	0.1298	0.1920	0.2541	0.1962	90-100	0.2438	30.85	96.7,96.7
110	0.1356	0.1848	0.2915	0.1991	0.1443	0.1920	0.2512	0.1962	100-110	0.2090	31.06	97.3,97.3
120	0.1500	0.1876	0.2338	0.2064	0.1587	0.1934	0.2454	0.1977	110-120	0.1955	31.26	98,98
130	0.1673	0.1920	0.2079	0.2034	0.1818	0.1963	0.2367	0.1977	120-130	0.1763	31.44	98.5,98.5
140	0.1818	0.1992	0.2079	0.2092	0.1962	0.2035	0.2310	0.2005	130-140	0.1550	31.59	99,99
150	0.1962	0.2093	0.2223	0.2179	0.2135	0.2107	0.2310	0.2078	140-150	0.1303	31.72	99.4,99.4
160	0.2135	0.2266	0.2396	0.2309	0.2309	0.2266	0.2281	0.2194	150-160	0.1014	31.82	99.7,99.7
170	0.2308	0.2338	0.2425	0.2381	0.2395	0.2381	0.2281	0.2337	160-170	0.0656	31.89	99.9,99.9
180	0.2395	0.2396	0.2425	0.2410	0.2395	0.2425	0.2396	0.2410	170-180	0.0226	31.91	100,100
DEG	LUMINOUS INTENSITY:cd									UNIT:lm		

Conical surface Flux(90deg): 15.791 lm

%lum = 49.5%

%lamp = 49.5%

Conical surface Flux(130deg): 25.332 lm

%lum = 79.4%

%lamp = 79.4%

C Range: 0 - 360DEG  
 C Interval: 30.0DEG  
 Test Speed: HIGH  
 Temperature:25.3℃  
 Operators:  
 Test Date:2025-02-25

$\gamma$  Range: 0 - 180DEG  
 $\gamma$  Interval: 1.0DEG  
 Test System:EVERFINE GO-2000B\_V1 SYSTEM V2.00.488  
 Humidity:65.0%  
 Test Distance:6.360m [K=1.0000]  
 Remarks:

LUMINANCE LIMITATION CURVES

Test:U:24.00V I:0.1719A P:4.126W PF:1.000 Freq:0Hz Lamp Flux:31.9101x1 lm		
NAME: SF16-24V-5050-72-RGBW(5000K)-80-B	TYPE:	WEIGHT:
SPEC.:	DIM.: Length=1m	SERIAL No.:
MFR.: OLympia lighting	SUR.:	Shielding Angle:



LUMINANCE cd/(m2)		
G (DEG)	C0/180	C90/270
85	825	686
80	685	626
75	643	613
70	625	588
65	621	580
60	620	584
55	622	590
50	627	599
45	632	606

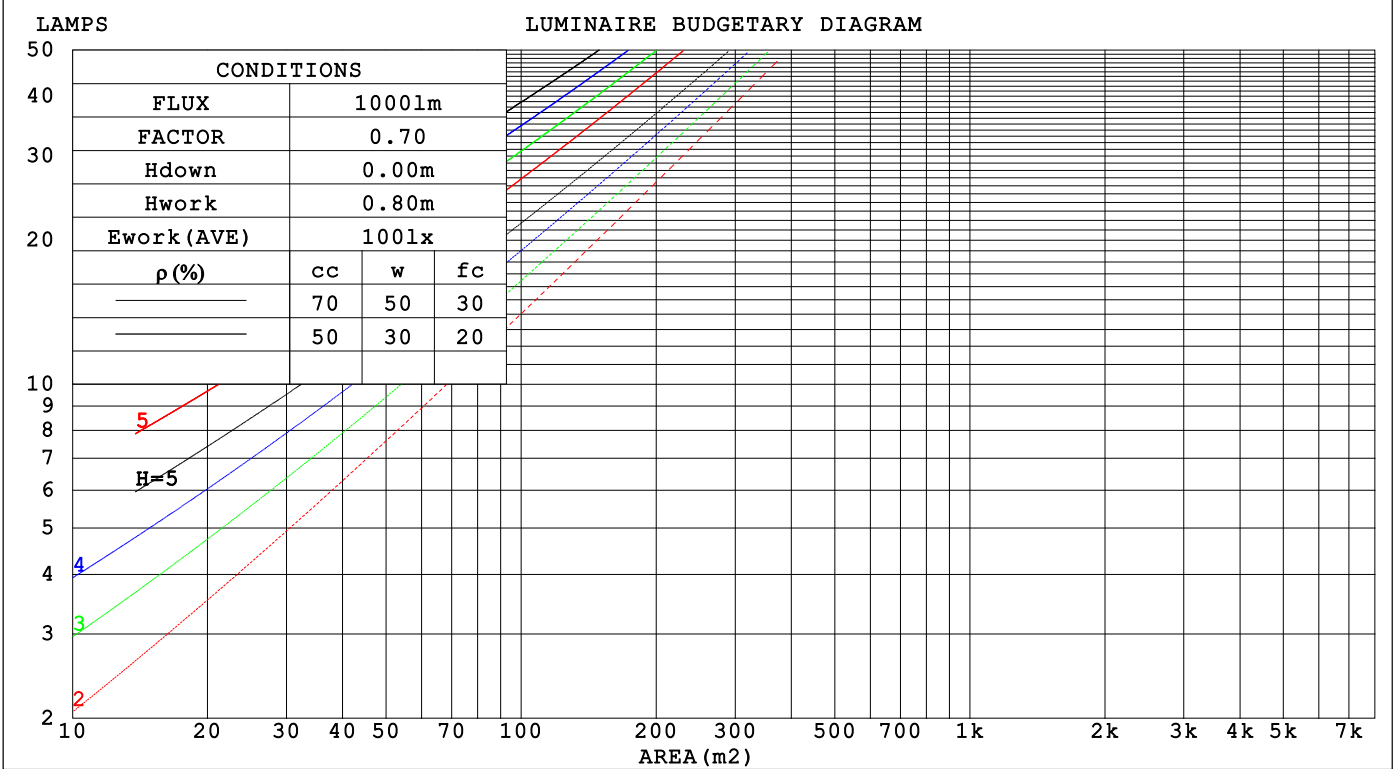
C Range: 0 - 360DEG  
C Interval: 30.0DEG  
Test Speed: HIGH  
Temperature:25.3℃  
Operators:  
Test Date:2025-02-25

γ Range: 0 - 180DEG  
γ Interval: 1.0DEG  
Test System:EVERFINE GO-2000B\_V1 SYSTEM V2.00.488  
Humidity:65.0%  
Test Distance:6.360m [K=1.0000]  
Remarks:

CU AND LUMINAIRE BUDGETARY ESTIMATE DIAGRAM

Test:U:24.00V I:0.1719A P:4.126W PF:1.000 Freq:0Hz		
Lamp Flux:31.9101x1 lm		
NAME: SF16-24V-5050-72-RGBW(5000K)-80-B	TYPE:	WEIGHT:
SPEC.:	DIM.: Length=1m	SERIAL No.:
MFR.: OLYMPIA lighting	SUR.:	Shielding Angle:

pcc	80%			70%			50%			30%			10%			0
pw	50%	30%	10%	50%	30%	10%	50%	30%	10%	50%	30%	10%	50%	30%	10%	0
pfc	20%			20%			20%			20%			20%			0
RCR	RCR:Room Cavity Ratio                      Coefficients of Utilization(CU)															
0.0	1.18	1.18	1.18	1.15	1.15	1.15	1.09	1.09	1.09	1.03	1.03	1.03	.98	.98	.98	.96
1.0	1.02	.97	.93	.99	.95	.91	.94	.91	.88	.90	.87	.84	.85	.83	.81	.79
2.0	.88	.81	.75	.86	.80	.74	.82	.76	.72	.78	.73	.70	.74	.71	.67	.65
3.0	.77	.69	.62	.75	.68	.61	.72	.65	.60	.69	.63	.58	.65	.61	.57	.54
4.0	.68	.59	.53	.67	.58	.52	.64	.57	.51	.61	.55	.50	.58	.53	.49	.46
5.0	.61	.52	.45	.60	.51	.45	.57	.50	.44	.55	.48	.43	.52	.47	.42	.40
6.0	.55	.46	.39	.54	.45	.39	.51	.44	.38	.49	.43	.38	.47	.42	.37	.35
7.0	.50	.41	.35	.49	.40	.34	.47	.39	.34	.45	.38	.33	.43	.37	.33	.31
8.0	.45	.37	.31	.44	.36	.31	.43	.35	.30	.41	.35	.30	.40	.34	.29	.27
9.0	.42	.33	.28	.41	.33	.28	.39	.32	.27	.38	.31	.27	.37	.31	.26	.25
10.0	.38	.30	.25	.38	.30	.25	.36	.29	.25	.35	.29	.24	.34	.28	.24	.22



C Range: 0 - 360DEG  
C Interval: 30.0DEG  
Test Speed: HIGH  
Temperature:25.3℃  
Operators:  
Test Date:2025-02-25

γ Range: 0 - 180DEG  
γ Interval: 1.0DEG  
Test System:EVERFINE GO-2000B\_V1 SYSTEM V2.00.488  
Humidity:65.0%  
Test Distance:6.360m [K=1.0000]  
Remarks:

## WEC AND CCEC

Test:U:24.00V I:0.1719A P:4.126W PF:1.000 Freq:0Hz Lamp Flux:31.9101x1 lm		
NAME: SF16-24V-5050-72-RGBW(5000K)-80-B	TYPE:	WEIGHT:
SPEC.:	DIM.: Length=1m	SERIAL No.:
MFR.: OLYMPIA lighting	SUR.:	Shielding Angle:

pcc	80%			70%			50%			30%			10%			0														
pw	50%	30%	10%	50%	30%	10%	50%	30%	10%	50%	30%	10%	50%	30%	10%	0														
pfc	20%			20%			20%			20%			20%			0														
RCR	RCR:Room Cavity Ratio															Wall Exitance Coefficients(WEC)														
0.0																														
1.0	.328	.186	.059	.319	.182	.058	.304	.174	.056	.289	.167	.054	.276	.160	.052															
2.0	.302	.165	.051	.294	.162	.050	.280	.156	.048	.267	.150	.047	.256	.145	.046															
3.0	.276	.147	.044	.270	.144	.043	.257	.139	.042	.246	.135	.041	.235	.130	.040															
4.0	.253	.132	.039	.247	.129	.038	.236	.125	.037	.226	.121	.037	.216	.118	.036															
5.0	.233	.119	.034	.228	.117	.034	.218	.113	.033	.209	.110	.033	.200	.107	.032															
6.0	.215	.108	.031	.211	.106	.031	.202	.103	.030	.194	.101	.030	.186	.098	.029															
7.0	.200	.099	.028	.196	.098	.028	.188	.095	.027	.180	.092	.027	.173	.090	.026															
8.0	.187	.091	.026	.183	.090	.025	.175	.088	.025	.169	.085	.025	.162	.083	.024															
9.0	.175	.084	.024	.171	.083	.023	.165	.081	.023	.158	.079	.023	.153	.077	.022															
10.0	.164	.079	.022	.161	.078	.022	.155	.076	.021	.149	.074	.021	.144	.072	.021															

pcc	80%			70%			50%			30%			10%			0
pw	50%	30%	10%	50%	30%	10%	50%	30%	10%	50%	30%	10%	50%	30%	10%	0
pfc	20%			20%			20%			20%			20%			0
RCR	RCR:Room Cavity Ratio						Ceiling Cavity Exitance Coefficients (CCEC)									
0.0	.222	.222	.222	.189	.189	.189	.129	.129	.129	.074	.074	.074	.024	.024	.024	
1.0	.213	.187	.164	.182	.161	.141	.125	.111	.098	.072	.064	.057	.023	.021	.018	
2.0	.205	.163	.128	.176	.141	.111	.120	.097	.077	.069	.057	.045	.022	.018	.015	
3.0	.197	.146	.105	.169	.126	.091	.116	.088	.064	.067	.051	.038	.022	.017	.012	
4.0	.190	.133	.090	.163	.115	.078	.112	.080	.055	.065	.047	.032	.021	.015	.011	
5.0	.182	.123	.079	.156	.106	.068	.108	.074	.048	.062	.044	.029	.020	.014	.009	
6.0	.175	.114	.071	.150	.099	.062	.104	.069	.044	.060	.041	.026	.019	.013	.009	
7.0	.168	.108	.065	.145	.093	.057	.100	.065	.040	.058	.038	.024	.019	.013	.008	
8.0	.161	.102	.061	.139	.088	.053	.096	.062	.038	.056	.037	.022	.018	.012	.007	
9.0	.155	.097	.057	.134	.084	.050	.093	.059	.036	.054	.035	.021	.017	.011	.007	
10.0	.150	.093	.055	.129	.080	.048	.089	.057	.034	.052	.033	.020	.017	.011	.007	

C Range: 0 - 360DEG  
C Interval: 30.0DEG  
Test Speed: HIGH  
Temperature:25.3℃  
Operators:  
Test Date:2025-02-25

γ Range: 0 - 180DEG  
γ Interval: 1.0DEG  
Test System:EVERFINE GO-2000B\_V1 SYSTEM V2.00.488  
Humidity:65.0%  
Test Distance:6.360m [K=1.0000]  
Remarks:

UGR(Unified Glare Rating) Table

Test:U:24.00V I:0.1719A P:4.126W PF:1.000 Freq:0Hz Lamp Flux:31.9101x1 lm											
NAME: SF16-24V-5050-72-RGBW(5000K)-80-B						TYPE:		WEIGHT:			
SPEC.:						DIM.: Length=1m		SERIAL No.:			
MFR.: OLympia lighting						SUR.:		Shielding Angle:			
ceiling/cavity	0.7	0.7	0.5	0.5	0.3	0.7	0.7	0.5	0.5	0.3	
walls	0.5	0.3	0.5	0.3	0.3	0.5	0.3	0.5	0.3	0.3	
working plane	0.2	0.2	0.2	0.2	0.2	0.2	0.2	0.2	0.2	0.2	
Room dimensions		Viewed crosswise					Viewed endwise				
x = 2H y = 2H	2H	23.1	24.6	23.4	24.8	25.1	22.9	24.4	23.2	24.6	24.9
	3H	24.9	26.2	25.2	26.5	26.9	24.6	26.0	25.0	26.3	26.6
	4H	25.7	27.0	26.1	27.3	27.7	25.4	26.7	25.8	27.1	27.4
	6H	26.4	27.7	26.8	28.0	28.4	26.1	27.4	26.5	27.7	28.1
	8H	26.8	27.9	27.2	28.3	28.7	26.4	27.6	26.8	28.0	28.3
	12H	27.0	28.2	27.5	28.6	28.9	26.6	27.8	27.1	28.2	28.5
4H	2H	23.7	25.0	24.1	25.3	25.7	23.6	24.9	23.9	25.2	25.5
	3H	25.7	26.8	26.1	27.2	27.6	25.5	26.6	25.9	27.0	27.4
	4H	26.7	27.7	27.1	28.1	28.5	26.5	27.5	26.9	27.9	28.3
	6H	27.6	28.5	28.0	28.9	29.4	27.3	28.2	27.8	28.7	29.1
	8H	28.0	28.8	28.5	29.3	29.8	27.7	28.5	28.1	29.0	29.5
	12H	28.3	29.1	28.8	29.6	30.1	28.0	28.8	28.5	29.2	29.7
8H	4H	27.0	27.9	27.5	28.3	28.8	26.8	27.7	27.3	28.1	28.6
	6H	28.1	28.9	28.6	29.3	29.8	27.9	28.6	28.4	29.1	29.6
	8H	28.7	29.3	29.2	29.8	30.3	28.4	29.0	28.9	29.5	30.1
	12H	29.2	29.7	29.7	30.2	30.8	28.8	29.4	29.4	29.9	30.5
12H	4H	27.1	27.9	27.6	28.3	28.8	26.9	27.7	27.4	28.1	28.6
	6H	28.2	28.9	28.8	29.4	29.9	28.0	28.7	28.5	29.2	29.7
	8H	28.8	29.4	29.4	29.9	30.5	28.6	29.1	29.1	29.6	30.2
Variations with the observer position at spacings(CIE Pub.117):											
S = 1.0H		+ 0.1 / - 0.1					+ 0.1 / - 0.2				
1.5H		+ 0.2 / - 0.3					+ 0.2 / - 0.3				
2.0H		+ 0.1 / - 0.3					+ 0.1 / - 0.3				

CIE Pub.117, 31.91 lm Total Lamp Luminous Flux Correct (8log(F/F0) = -12.0)  
Area: 0.016 m2

C Range: 0 - 360DEG  
C Interval: 30.0DEG  
Test Speed: HIGH  
Temperature:25.3℃  
Operators:  
Test Date:2025-02-25

γ Range: 0 - 180DEG  
γ Interval: 1.0DEG  
Test System:EVERFINE GO-2000B\_V1 SYSTEM V2.00.488  
Humidity:65.0%  
Test Distance:6.360m [K=1.0000]  
Remarks:

## UTILIZATION FACTORS TABLE

Test:U:24.00V I:0.1719A P:4.126W PF:1.000 Freq:0Hz Lamp Flux:31.9101x1 lm		
NAME: SF16-24V-5050-72-RGBW(5000K)-80-B	TYPE:	WEIGHT:
SPEC.:	DIM.: Length=1m	SERIAL No.:
MFR.: OLympia lighting	SUR.:	Shielding Angle:

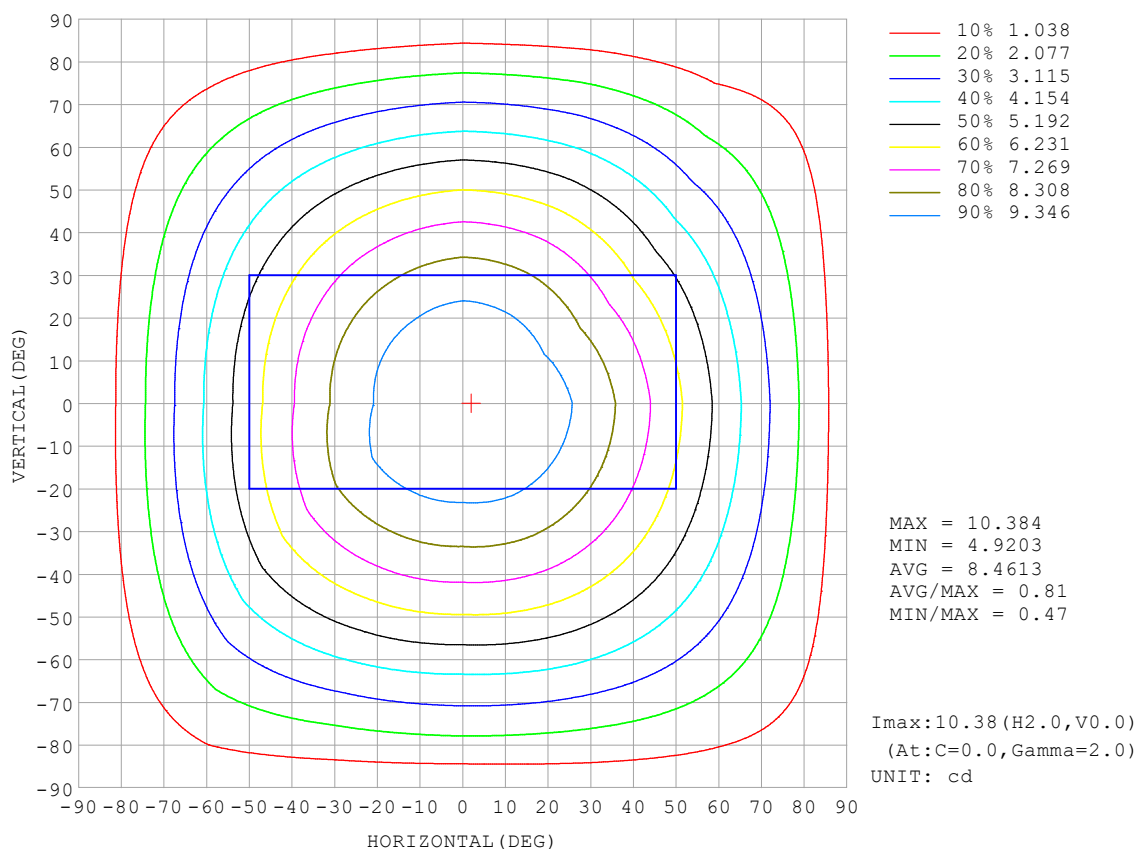
REFLECTANCE										
Ceiling	0.8	0.8	0.8	0.7	0.7	0.7	0.5	0.5	0.5	0
Walls	0.7	0.5	0.3	0.7	0.5	0.3	0.7	0.5	0.3	0
Working plane	0.2	0.2	0.2	0.2	0.2	0.2	0.2	0.2	0.2	0
ROOM INDEX	UTILIZATION FACTORS (PERCENT) $k(RI) \times RCR = 5$									
$k = 0.60$	55	44	37	55	43	37	53	43	36	30
0.80	65	53	46	64	53	46	62	52	45	38
1.00	74	62	54	72	61	54	70	62	53	46
1.25	81	70	62	79	69	62	76	67	61	53
1.50	86	75	68	84	74	67	80	72	66	58
2.00	93	83	77	90	82	76	86	79	74	65
2.50	97	88	82	94	87	81	90	83	78	69
3.00	100	93	87	97	91	85	93	87	83	73
4.00	104	98	93	101	96	91	96	92	88	78
5.00	107	101	97	104	99	95	99	95	92	81
ROOM INDEX	UF (total)									Direct
According to DIN EN 13032-2 2004			Suspended					SHRNOM = 1.25		

C Range: 0 - 360DEG  
 C Interval: 30.0DEG  
 Test Speed: HIGH  
 Temperature: 25.3 °C  
 Operators:  
 Test Date: 2025-02-25

γ Range: 0 - 180DEG  
 γ Interval: 1.0DEG  
 Test System: EVERFINE GO-2000B\_V1 SYSTEM V2.00.488  
 Humidity: 65.0%  
 Test Distance: 6.360m [K=1.0000]  
 Remarks:

## ISOCANDELA DIAGRAM

Test:U:24.00V I:0.1719A P:4.126W PF:1.000 Freq:0Hz Lamp Flux:31.9101x1 lm		
NAME: SF16-24V-5050-72-RGBW(5000K)-80-B	TYPE:	WEIGHT:
SPEC.:	DIM.: Length=1m	SERIAL No.:
MFR.: OLympia lighting	SUR.:	Shielding Angle:



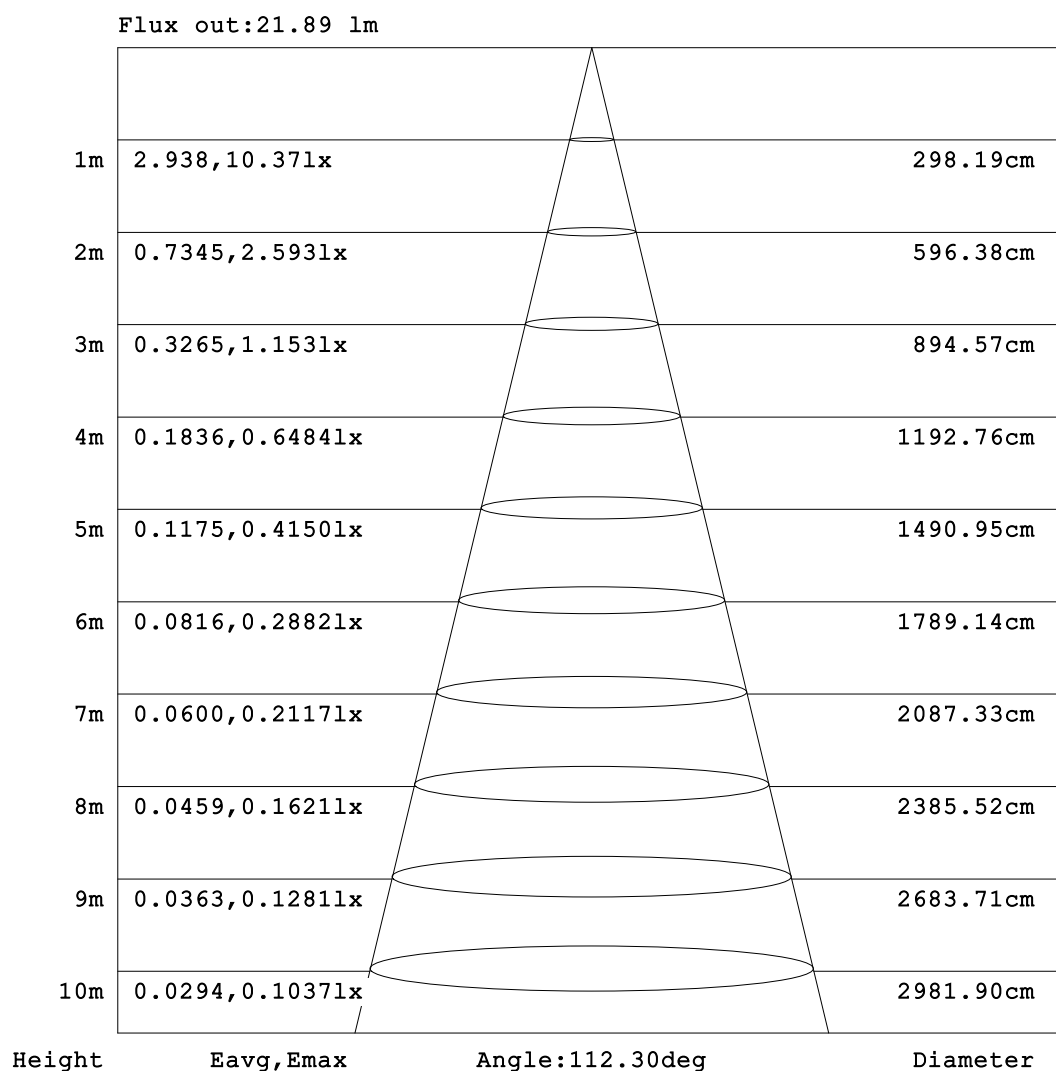
C Range: 0 - 360DEG  
C Interval: 30.0DEG  
Test Speed: HIGH  
Temperature:25.3℃  
Operators:  
Test Date:2025-02-25

γ Range: 0 - 180DEG  
γ Interval: 1.0DEG  
Test System:EVERFINE GO-2000B\_V1 SYSTEM V2.00.488  
Humidity:65.0%  
Test Distance:6.360m [K=1.0000]  
Remarks:



## AAI Figure

Test:U:24.00V I:0.1719A P:4.126W PF:1.000 Freq:0Hz Lamp Flux:31.9101lx1 lm		
NAME: SF16-24V-5050-72-RGBW(5000K)-80-B	TYPE:	WEIGHT:
SPEC.:	DIM.: Length=1m	SERIAL No.:
MFR.: OLympia lighting	SUR.:	Shielding Angle:



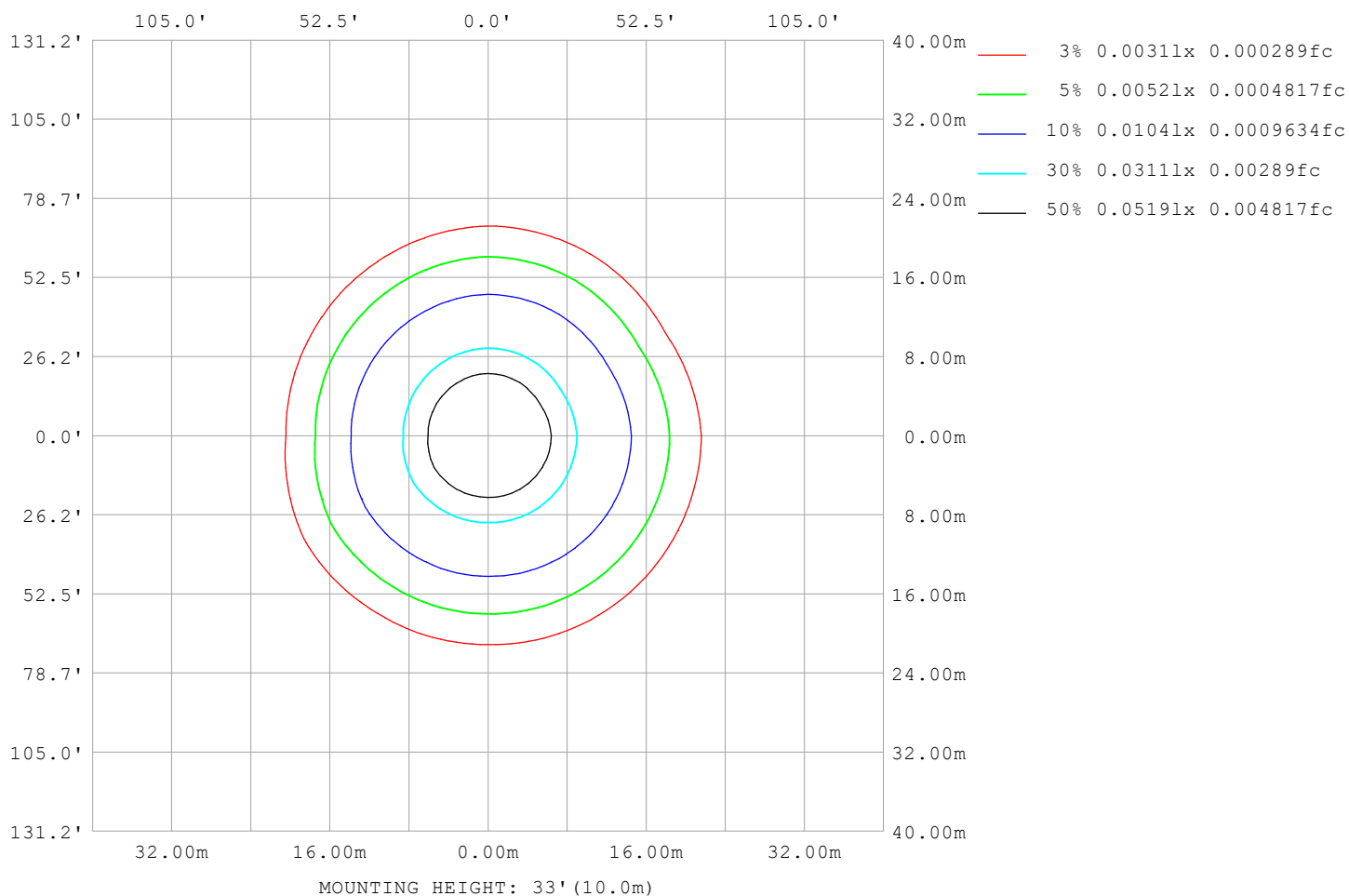
Note:The Curves indicate the illuminated area and the average illumination when the luminaire is at different distance.

C Range: 0 - 360DEG  
C Interval: 30.0DEG  
Test Speed: HIGH  
Temperature:25.3℃  
Operators:  
Test Date:2025-02-25

γ Range: 0 - 180DEG  
γ Interval: 1.0DEG  
Test System:EVERFINE GO-2000B\_V1 SYSTEM V2.00.488  
Humidity:65.0%  
Test Distance:6.360m [K=1.0000]  
Remarks:

## ISOLUX DIAGRAM

Test:U:24.00V I:0.1719A P:4.126W PF:1.000 Freq:0Hz Lamp Flux:31.9101x1 lm		
NAME: SF16-24V-5050-72-RGBW(5000K)-80-B	TYPE:	WEIGHT:
SPEC.:	DIM.: Length=1m	SERIAL No.:
MFR.: OLympia lighting	SUR.:	Shielding Angle:



C Range: 0 - 360DEG  
C Interval: 30.0DEG  
Test Speed: HIGH  
Temperature: 25.3°C  
Operators:  
Test Date: 2025-02-25

γ Range: 0 - 180DEG  
γ Interval: 1.0DEG  
Test System: EVERFINE GO-2000B\_V1 SYSTEM V2.00.488  
Humidity: 65.0%  
Test Distance: 6.360m [K=1.0000]  
Remarks:

## LED Avg.L Report

Test:U:24.00V I:0.1719A P:4.126W PF:1.000 Freq:0Hz Lamp Flux:31.9101x1 lm		
NAME: SF16-24V-5050-72-RGBW(5000K)-80-B	TYPE:	WEIGHT:
SPEC.:	DIM.: Length=1m	SERIAL No.:
MFR.: OLympia lighting	SUR.:	Shielding Angle:

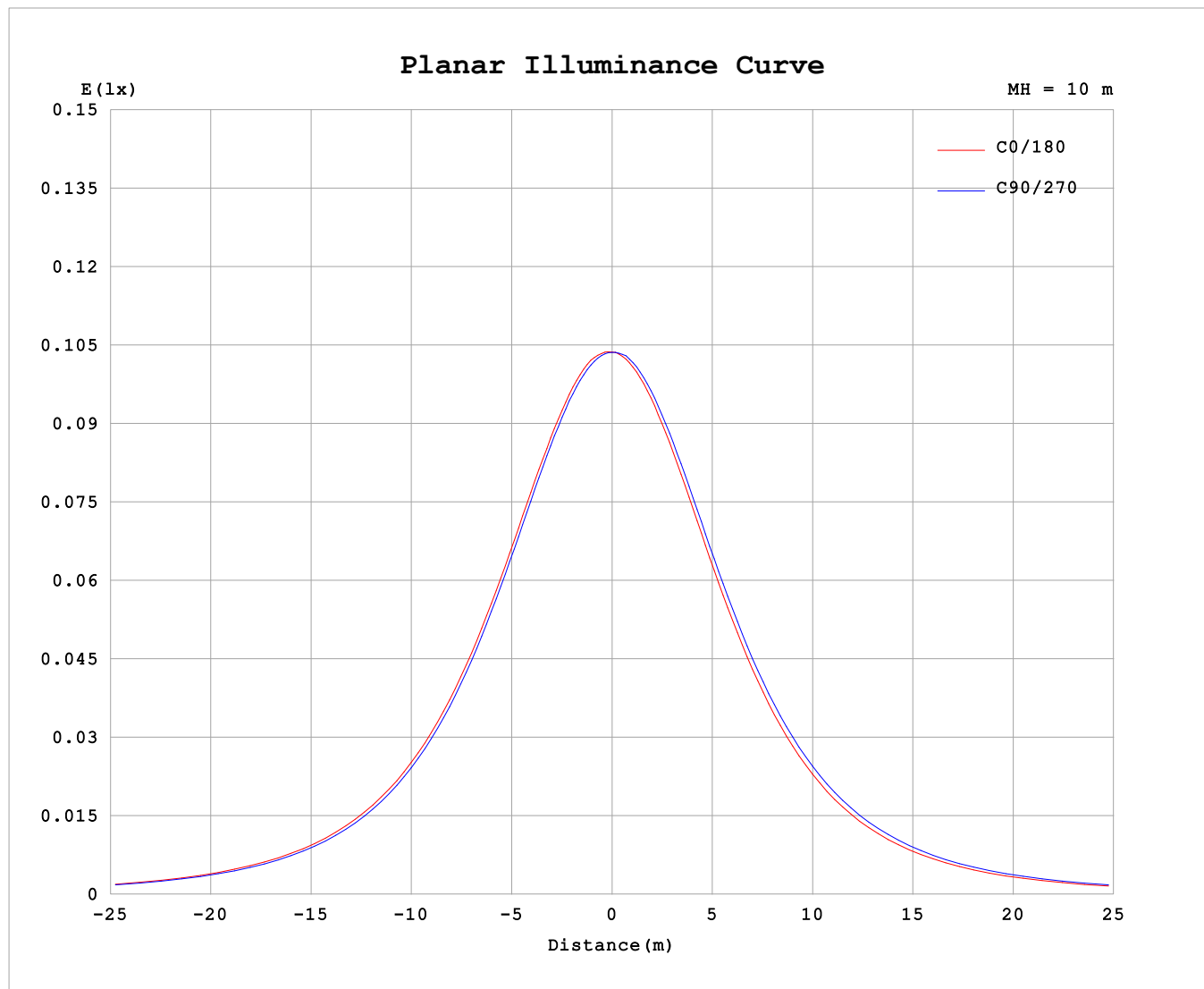
AvgL	cd/m2
L_0~180 (65) av	569
L_0~180 (75) av	559
L_0~180 (85) av	621
L_90~270 (65) av	583
L_90~270 (75) av	600
L_90~270 (85) av	679
L_45 (65) av	575
L_45 (75) av	569
L_45 (85) av	625

Standard: GB/T 29293-2012

C Range: 0 - 360DEG  
C Interval: 30.0DEG  
Test Speed: HIGH  
Temperature:25.3℃  
Operators:  
Test Date:2025-02-25

γ Range: 0 - 180DEG  
γ Interval: 1.0DEG  
Test System:EVERFINE GO-2000B\_V1 SYSTEM V2.00.488  
Humidity:65.0%  
Test Distance:6.360m [K=1.0000]  
Remarks:

## Planar Illuminance Curve



C Range: 0 - 360DEG  
C Interval: 30.0DEG  
Test Speed: HIGH  
Temperature: 25.3 °C  
Operators:  
Test Date: 2025-02-25

$\gamma$  Range: 0 - 180DEG  
 $\gamma$  Interval: 1.0DEG  
Test System: EVERFINE GO-2000B\_V1 SYSTEM V2.00.488  
Humidity: 65.0%  
Test Distance: 6.360m [K=1.0000]  
Remarks:

## LUMINOUS DISTRIBUTION INTENSITY DATA

Test:U:24.00V I:0.1719A P:4.126W PF:1.000 Freq:0Hz Lamp Flux:31.9101x1 lm																	
NAME: SF16-24V-5050-72-RGBW(5000K)-80-B									TYPE:						WEIGHT:		
SPEC.:									DIM.: Length=1m						SERIAL No.:		
MFR.: OLYMPIA lighting									SUR.:						Shielding Angle:		

Table--1

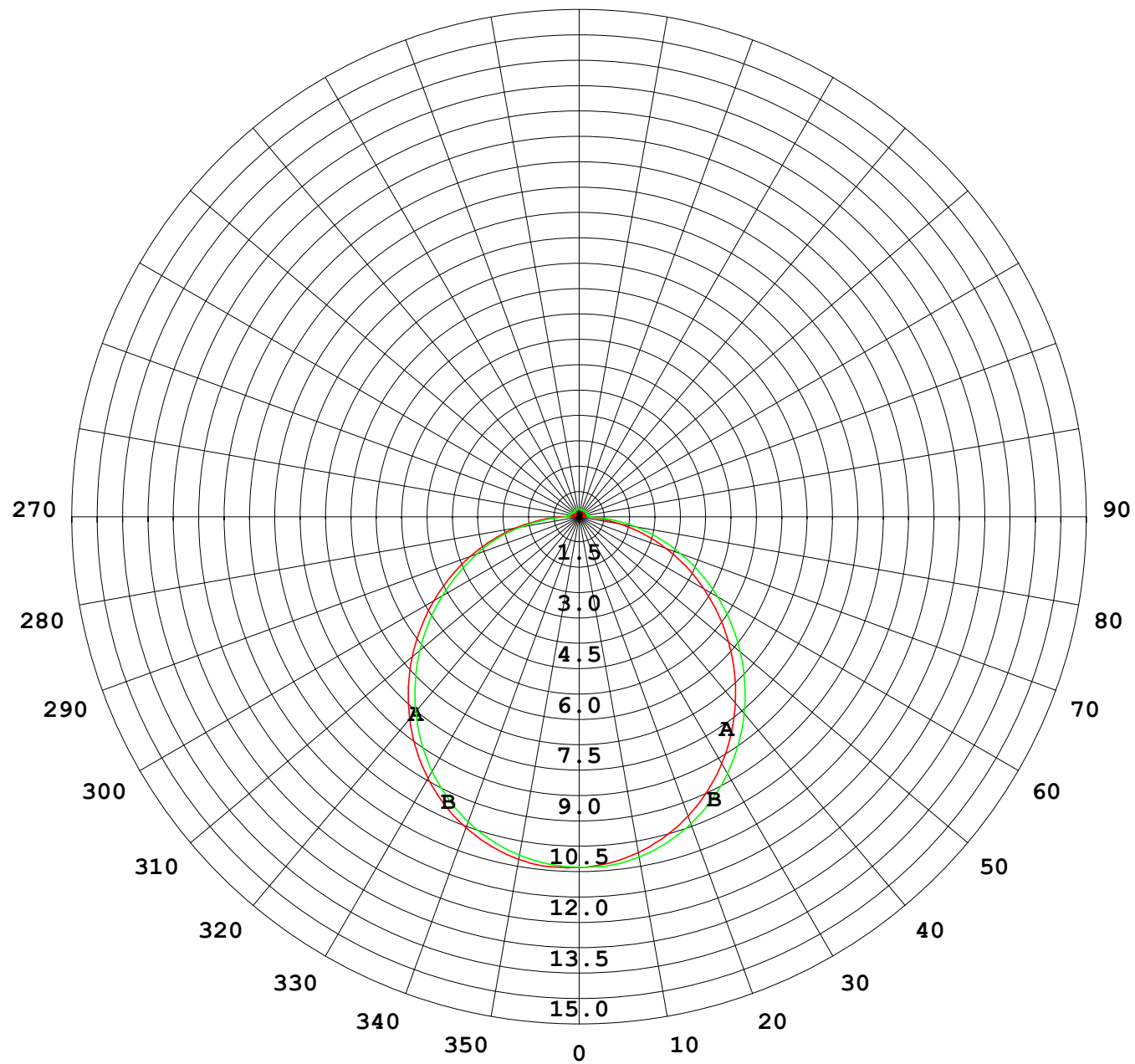
UNIT: cd

C (DEG) γ (DEG)	0	30	60	90	120	150	180	210	240	270	300	330						
0	10.4	10.4	10.4	10.4	10.4	10.4	10.4	10.4	10.4	10.4	10.4	10.4						
5	10.4	10.3	10.4	10.3	10.3	10.3	10.3	10.3	10.3	10.4	10.3	10.3						
10	10.3	10.2	10.2	10.2	10.2	10.2	10.1	10.1	10.1	10.2	10.2	10.1						
15	10.1	10.0	10.0	9.92	9.97	10.0	9.79	9.84	9.90	9.99	9.95	9.88						
20	9.79	9.73	9.70	9.60	9.64	9.70	9.42	9.48	9.55	9.67	9.62	9.52						
25	9.40	9.35	9.30	9.19	9.23	9.31	8.96	9.03	9.13	9.26	9.21	9.08						
30	8.94	8.88	8.83	8.70	8.74	8.83	8.43	8.51	8.63	8.77	8.72	8.57						
35	8.40	8.34	8.28	8.14	8.19	8.29	7.84	7.92	8.06	8.21	8.16	8.00						
40	7.80	7.74	7.66	7.52	7.57	7.69	7.19	7.28	7.42	7.59	7.54	7.35						
45	7.14	7.07	6.99	6.85	6.90	7.02	6.49	6.59	6.75	6.93	6.86	6.67						
50	6.44	6.38	6.30	6.16	6.20	6.32	5.77	5.87	6.04	6.23	6.15	5.94						
55	5.71	5.64	5.56	5.41	5.45	5.58	5.02	5.12	5.29	5.49	5.41	5.20						
60	4.96	4.89	4.81	4.68	4.71	4.83	4.25	4.35	4.53	4.73	4.66	4.44						
65	4.20	4.12	4.05	3.92	3.94	4.07	3.50	3.59	3.77	3.96	3.89	3.67						
70	3.42	3.36	3.29	3.22	3.19	3.30	2.73	2.83	3.01	3.20	3.12	2.90						
75	2.66	2.58	2.54	2.54	2.43	2.54	1.97	2.07	2.24	2.43	2.36	2.14						
80	1.90	1.83	1.78	1.74	1.69	1.78	1.23	1.32	1.49	1.68	1.60	1.38						
85	1.15	1.07	1.03	0.96	0.94	1.03	0.58	0.63	0.75	0.94	0.85	0.69						
90	0.53	0.46	0.39	0.32	0.36	0.44	0.21	0.27	0.25	0.26	0.29	0.27						
95	0.18	0.14	0.24	0.32	0.24	0.15	0.12	0.16	0.22	0.25	0.22	0.18						
100	0.14	0.14	0.24	0.31	0.24	0.15	0.13	0.16	0.22	0.25	0.22	0.18						
105	0.14	0.15	0.23	0.30	0.24	0.15	0.14	0.16	0.22	0.25	0.22	0.18						
110	0.14	0.15	0.22	0.29	0.24	0.16	0.14	0.16	0.22	0.25	0.22	0.18						
115	0.14	0.16	0.21	0.26	0.24	0.17	0.15	0.16	0.22	0.25	0.22	0.18						
120	0.15	0.17	0.21	0.23	0.23	0.18	0.16	0.16	0.22	0.25	0.22	0.18						
125	0.16	0.18	0.20	0.22	0.22	0.19	0.17	0.17	0.22	0.24	0.22	0.18						
130	0.17	0.19	0.20	0.21	0.21	0.19	0.18	0.17	0.22	0.24	0.22	0.18						
135	0.17	0.20	0.20	0.21	0.21	0.20	0.19	0.18	0.22	0.23	0.22	0.18						
140	0.18	0.20	0.20	0.21	0.21	0.21	0.20	0.18	0.22	0.23	0.22	0.18						
145	0.19	0.21	0.20	0.22	0.21	0.21	0.20	0.19	0.22	0.23	0.22	0.19						
150	0.20	0.22	0.20	0.22	0.21	0.23	0.21	0.19	0.23	0.23	0.22	0.19						
155	0.20	0.23	0.21	0.24	0.22	0.24	0.23	0.20	0.23	0.23	0.23	0.20						
160	0.21	0.24	0.21	0.24	0.22	0.24	0.23	0.21	0.24	0.23	0.23	0.21						
165	0.22	0.24	0.22	0.24	0.23	0.24	0.24	0.22	0.24	0.23	0.25	0.22						
170	0.23	0.24	0.23	0.24	0.23	0.24	0.24	0.23	0.24	0.23	0.24	0.23						
175	0.23	0.24	0.23	0.24	0.24	0.24	0.24	0.23	0.24	0.24	0.24	0.24						
180	0.24	0.24	0.24	0.24	0.24	0.24	0.24	0.24	0.24	0.24	0.24	0.24						

C Range: 0 - 360DEG  
C Interval: 30.0DEG  
Test Speed: HIGH  
Temperature:25.3℃  
Operators:  
Test Date:2025-02-25

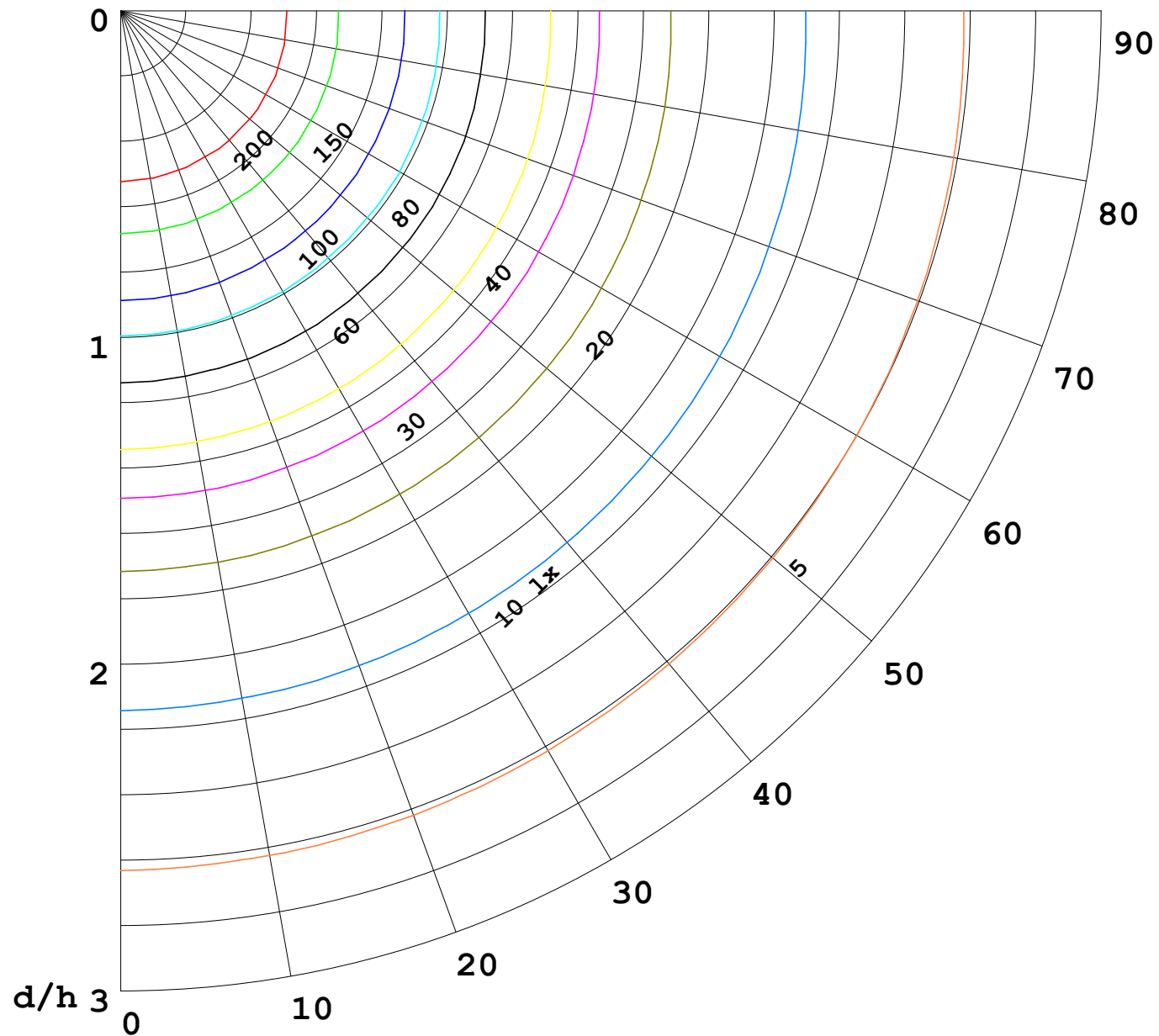
γ Range: 0 - 180DEG  
γ Interval: 1.0DEG  
Test System:EVERFINE GO-2000B\_V1 SYSTEM V2.00.488  
Humidity:65.0%  
Test Distance:6.360m [K=1.0000]  
Remarks:

I (cd)



1000 lm

$\kappa = 1$



F = 1000 lm  
 K = 0.7  
 Hcc = 0.8 m  
 Hfc = 0.0 m  
 Eave = 100 lx

	Pcc	Pw	Pfc
—————	70	50	30
—————	50	30	20

