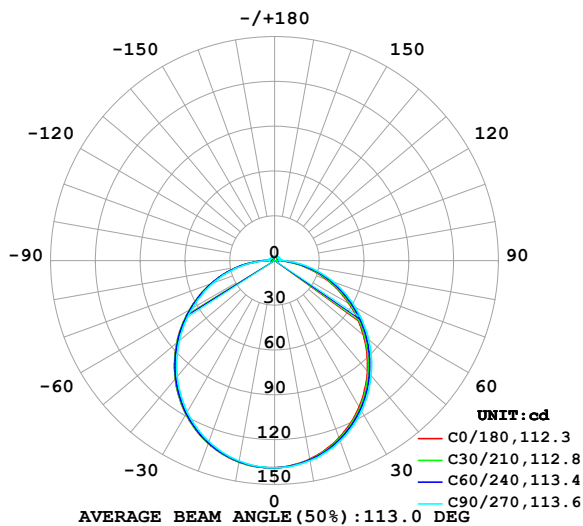


## LUMINAIRE PHOTOMETRIC TEST REPORT

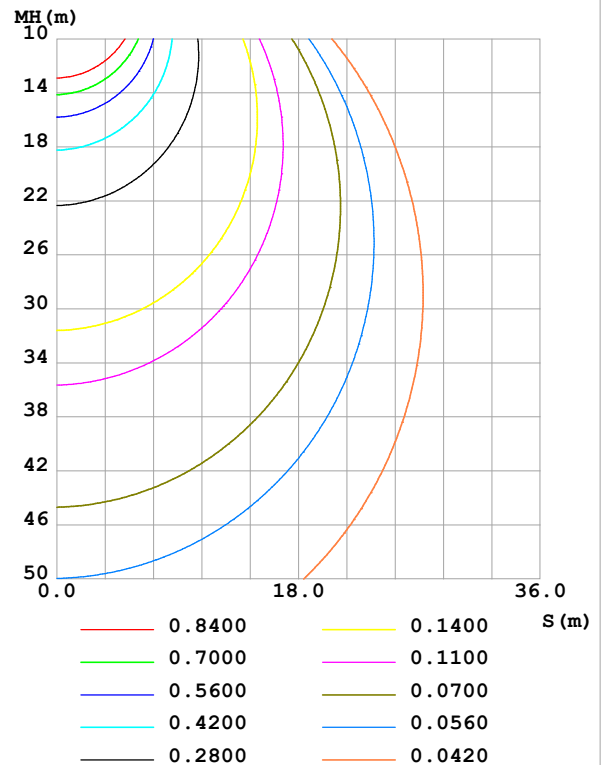
|   |                 |                  |
|---|-----------------|------------------|
| Test:U:24.00V I:0.7139A P:17.13W PF:1.000 Freq:0Hz<br>Lamp Flux:427.72x1 lm |                 |                  |
| NAME: SF16-24V-5050-72-RGBW(2700K)-80-ALL                                   | TYPE:           | WEIGHT:          |
| SPEC.:  | DIM.: Length=1m | SERIAL No.:      |
| MFR.: OLympia lighting  | SUR.:           | Shielding Angle: |

| DATA OF LAMP     |        | PHOTOMETRIC DATA Eff: 24.96 lm/W |        |                        |          |
|------------------|--------|----------------------------------|--------|------------------------|----------|
| MODEL            | 5050   | Imax(cd)                         | 138.9  | S/MH(C0/180)           | 1.27     |
| NOMINAL POWER(W) |        | LOR(%)                           | 100.0  | S/MH(C90/270)          | 1.26     |
| RATED VOLTAGE(V) | 24     | TOTAL FLUX(lm)                   | 427.72 | $\eta$ UP,DN(C0-180)   | 2.0,47.2 |
| NOMINAL FLUX(lm) | 427.72 | CIE CLASS                        | DIRECT | $\eta$ UP,DN(C180-360) | 2.1,48.7 |
| LAMPS INSIDE     | 1      | $\eta$ up(%)                     | 4.1    | CIBSE SHR NOM          | 1.25     |
| TEST VOLTAGE(V)  |        | $\eta$ down(%)                   | 95.9   | CIBSE SHR MAX          | 1.35     |

LUMINOUS INTENSITY DISTRIBUTION DIAGRAM



C0 PLANE ISOLUX DIAGRAM (UNIT:lx)



C Range: 0 - 360DEG  
C Interval: 30.0DEG  
Test Speed: HIGH  
Temperature:25.3℃  
Operators:  
Test Date:2025-02-25

$\gamma$  Range: 0 - 180DEG  
 $\gamma$  Interval: 1.0DEG  
Test System:EVERFINE GO-2000B\_V1 SYSTEM V2.00.488  
Humidity:65.0%  
Test Distance:6.360m [K=1.0000]  
Remarks:

## ZONAL FLUX DIAGRAM

## ZONAL FLUX DIAGRAM:

| $\gamma$ | C0                    | C45   | C90   | C135  | C180  | C225  | C270  | C315  | $\gamma$ | $\Phi$ zone | $\Phi$ total | %lum,lamp |
|----------|-----------------------|-------|-------|-------|-------|-------|-------|-------|----------|-------------|--------------|-----------|
| 10       | 135.1                 | 135.5 | 136.2 | 136.8 | 137.1 | 136.9 | 136.4 | 135.7 | 0- 10    | 13.12       | 13.12        | 3.07,3.07 |
| 20       | 126.3                 | 127.3 | 128.6 | 129.7 | 130.3 | 130.0 | 129.1 | 127.6 | 10- 20   | 37.53       | 50.65        | 11.8,11.8 |
| 30       | 113.3                 | 114.6 | 116.4 | 118.0 | 118.9 | 118.6 | 117.2 | 115.0 | 20- 30   | 56.71       | 107.4        | 25.1,25.1 |
| 40       | 96.72                 | 98.30 | 100.6 | 102.6 | 103.6 | 103.3 | 101.5 | 98.89 | 30- 40   | 68.19       | 175.6        | 41,41     |
| 50       | 77.78                 | 79.57 | 82.23 | 84.32 | 85.52 | 85.21 | 83.29 | 80.26 | 40- 50   | 70.80       | 246.4        | 57.6,57.6 |
| 60       | 57.60                 | 59.47 | 62.34 | 64.41 | 65.73 | 65.49 | 63.51 | 60.28 | 50- 60   | 64.78       | 311.1        | 72.7,72.7 |
| 70       | 37.15                 | 39.02 | 41.93 | 43.90 | 45.27 | 45.25 | 43.72 | 40.10 | 60- 70   | 51.69       | 362.8        | 84.8,84.8 |
| 80       | 17.01                 | 18.82 | 21.75 | 23.56 | 24.90 | 25.05 | 23.61 | 19.98 | 70- 80   | 33.70       | 396.5        | 92.7,92.7 |
| 90       | 3.392                 | 3.462 | 3.358 | 5.424 | 6.805 | 6.309 | 3.998 | 4.148 | 80- 90   | 13.52       | 410.1        | 95.9,95.9 |
| 100      | 1.773                 | 2.424 | 3.485 | 2.399 | 1.582 | 2.853 | 3.899 | 2.965 | 90-100   | 3.327       | 413.4        | 96.6,96.6 |
| 110      | 2.019                 | 2.541 | 3.375 | 2.488 | 1.731 | 2.702 | 3.613 | 2.846 | 100-110  | 2.820       | 416.2        | 97.3,97.3 |
| 120      | 2.254                 | 2.655 | 3.262 | 2.615 | 1.960 | 2.614 | 3.257 | 2.730 | 110-120  | 2.637       | 418.8        | 97.9,97.9 |
| 130      | 2.484                 | 2.756 | 3.161 | 2.702 | 2.201 | 2.603 | 2.994 | 2.685 | 120-130  | 2.400       | 421.2        | 98.5,98.5 |
| 140      | 2.698                 | 2.826 | 3.045 | 2.796 | 2.453 | 2.689 | 2.875 | 2.734 | 130-140  | 2.110       | 423.3        | 99,99     |
| 150      | 2.893                 | 2.936 | 3.043 | 2.952 | 2.719 | 2.842 | 2.878 | 2.862 | 140-150  | 1.770       | 425.1        | 99.4,99.4 |
| 160      | 3.100                 | 3.126 | 3.193 | 3.159 | 2.980 | 3.052 | 3.066 | 3.060 | 150-160  | 1.381       | 426.5        | 99.7,99.7 |
| 170      | 3.269                 | 3.293 | 3.352 | 3.321 | 3.220 | 3.252 | 3.282 | 3.262 | 160-170  | 0.9020      | 427.4        | 99.9,99.9 |
| 180      | 3.332                 | 3.369 | 3.416 | 3.391 | 3.341 | 3.369 | 3.407 | 3.392 | 170-180  | 0.3173      | 427.7        | 100,100   |
| DEG      | LUMINOUS INTENSITY:cd |       |       |       |       |       |       |       |          | UNIT:lm     |              |           |

Conical surface Flux(90deg): 211.2 lm

%lum = 49.4%

%lamp = 49.4%

Conical surface Flux(130deg): 338.98 lm

%lum = 79.3%

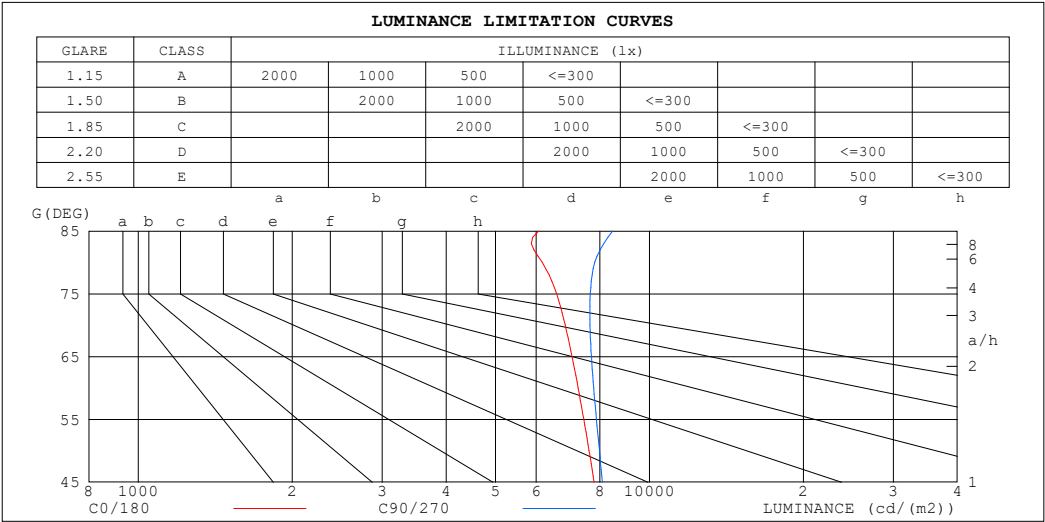
%lamp = 79.3%

C Range: 0 - 360DEG  
 C Interval: 30.0DEG  
 Test Speed: HIGH  
 Temperature:25.3℃  
 Operators:  
 Test Date:2025-02-25

$\gamma$  Range: 0 - 180DEG  
 $\gamma$  Interval: 1.0DEG  
 Test System:EVERFINE GO-2000B\_V1 SYSTEM V2.00.488  
 Humidity:65.0%  
 Test Distance:6.360m [K=1.0000]  
 Remarks:

LUMINANCE LIMITATION CURVES

|   |                 |                  |
|---|-----------------|------------------|
| Test:U:24.00V I:0.7139A P:17.13W PF:1.000 Freq:0Hz<br>Lamp Flux:427.72x1 lm |                 |                  |
| NAME: SF16-24V-5050-72-RGBW(2700K)-80-ALL                                   | TYPE:           | WEIGHT:          |
| SPEC.:  | DIM.: Length=1m | SERIAL No.:      |
| MFR.: OLympia lighting  | SUR.:           | Shielding Angle: |



| LUMINANCE cd/(m2) |        |         |
|-------------------|--------|---------|
| G (DEG)           | C0/180 | C90/270 |
| 85                | 6074   | 8469    |
| 80                | 6168   | 7812    |
| 75                | 6582   | 7660    |
| 70                | 6839   | 7646    |
| 65                | 7055   | 7697    |
| 60                | 7253   | 7776    |
| 55                | 7438   | 7872    |
| 50                | 7619   | 7979    |
| 45                | 7787   | 8087    |

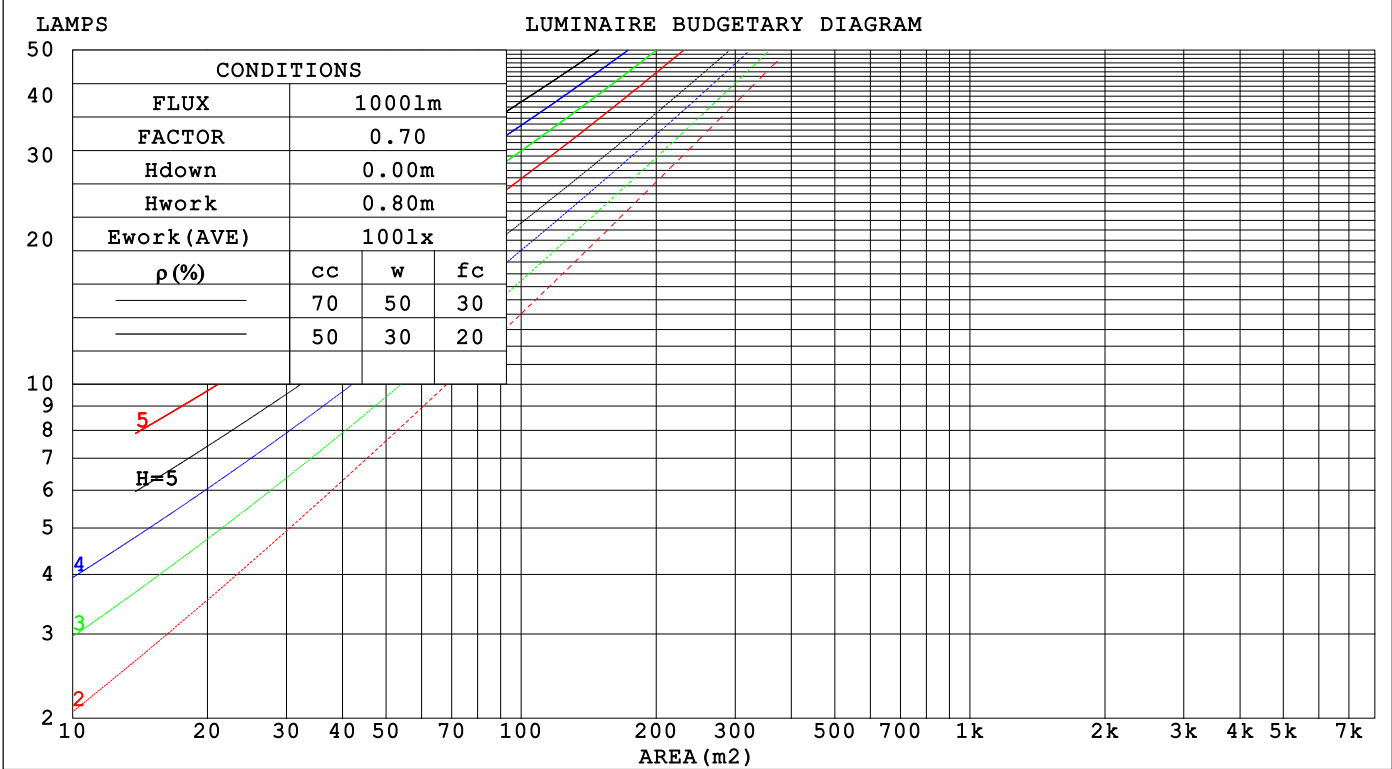
C Range: 0 - 360DEG  
C Interval: 30.0DEG  
Test Speed: HIGH  
Temperature:25.3℃  
Operators:  
Test Date:2025-02-25

γ Range: 0 - 180DEG  
γ Interval: 1.0DEG  
Test System:EVERFINE GO-2000B\_V1 SYSTEM V2.00.488  
Humidity:65.0%  
Test Distance:6.360m [K=1.0000]  
Remarks:

CU AND LUMINAIRE BUDGETARY ESTIMATE DIAGRAM

|   |                 |                  |
|---|-----------------|------------------|
| Test:U:24.00V I:0.7139A P:17.13W PF:1.000 Freq:0Hz<br>Lamp Flux:427.72x1 lm |                 |                  |
| NAME: SF16-24V-5050-72-RGBW(2700K)-80-ALL                                   | TYPE:           | WEIGHT:          |
| SPEC.:  | DIM.: Length=1m | SERIAL No.:      |
| MFR.: OLYMPIA lighting  | SUR.:           | Shielding Angle: |

|      |                       |      |      |                                 |      |      |      |      |      |      |      |      |     |     |     |     |
|------|-----------------------|------|------|---------------------------------|------|------|------|------|------|------|------|------|-----|-----|-----|-----|
| pcc  | 80%                   |      |      | 70%                             |      |      | 50%  |      |      | 30%  |      |      | 10% |     |     | 0   |
| pw   | 50%                   | 30%  | 10%  | 50%                             | 30%  | 10%  | 50%  | 30%  | 10%  | 50%  | 30%  | 10%  | 50% | 30% | 10% | 0   |
| pfc  | 20%                   |      |      | 20%                             |      |      | 20%  |      |      | 20%  |      |      | 20% |     |     | 0   |
| RCR  | RCR:Room Cavity Ratio |      |      | Coefficients of Utilization(CU) |      |      |      |      |      |      |      |      |     |     |     |     |
| 0.0  | 1.18                  | 1.18 | 1.18 | 1.15                            | 1.15 | 1.15 | 1.09 | 1.09 | 1.09 | 1.03 | 1.03 | 1.03 | .98 | .98 | .98 | .96 |
| 1.0  | 1.02                  | .97  | .93  | .99                             | .95  | .91  | .94  | .91  | .88  | .90  | .87  | .84  | .85 | .83 | .81 | .79 |
| 2.0  | .88                   | .81  | .75  | .86                             | .80  | .74  | .82  | .76  | .72  | .78  | .73  | .69  | .74 | .71 | .67 | .65 |
| 3.0  | .77                   | .69  | .62  | .75                             | .68  | .61  | .72  | .65  | .60  | .69  | .63  | .58  | .65 | .61 | .57 | .54 |
| 4.0  | .68                   | .59  | .53  | .67                             | .58  | .52  | .64  | .56  | .51  | .61  | .55  | .50  | .58 | .53 | .48 | .46 |
| 5.0  | .61                   | .52  | .45  | .60                             | .51  | .45  | .57  | .49  | .44  | .55  | .48  | .43  | .52 | .47 | .42 | .40 |
| 6.0  | .55                   | .46  | .39  | .54                             | .45  | .39  | .51  | .44  | .38  | .49  | .43  | .38  | .47 | .41 | .37 | .35 |
| 7.0  | .50                   | .41  | .35  | .49                             | .40  | .34  | .47  | .39  | .34  | .45  | .38  | .33  | .43 | .37 | .33 | .31 |
| 8.0  | .45                   | .37  | .31  | .44                             | .36  | .31  | .43  | .35  | .30  | .41  | .35  | .30  | .40 | .34 | .29 | .27 |
| 9.0  | .42                   | .33  | .28  | .41                             | .33  | .27  | .39  | .32  | .27  | .38  | .31  | .27  | .37 | .31 | .26 | .25 |
| 10.0 | .38                   | .30  | .25  | .38                             | .30  | .25  | .36  | .29  | .25  | .35  | .29  | .24  | .34 | .28 | .24 | .22 |



C Range: 0 - 360DEG  
C Interval: 30.0DEG  
Test Speed: HIGH  
Temperature:25.3℃  
Operators:  
Test Date:2025-02-25

γ Range: 0 - 180DEG  
γ Interval: 1.0DEG  
Test System:EVERFINE GO-2000B\_V1 SYSTEM V2.00.488  
Humidity:65.0%  
Test Distance:6.360m [K=1.0000]  
Remarks:

## WEC AND CCEC

|   |                 |                  |
|---|-----------------|------------------|
| Test:U:24.00V I:0.7139A P:17.13W PF:1.000 Freq:0Hz<br>Lamp Flux:427.72x1 lm |                 |                  |
| NAME: SF16-24V-5050-72-RGBW(2700K)-80-ALL                                   | TYPE:           | WEIGHT:          |
| SPEC.:  | DIM.: Length=1m | SERIAL No.:      |
| MFR.: OLYMPIA lighting  | SUR.:           | Shielding Angle: |

| pcc  | 80%                   |      |      | 70%  |      |      | 50%  |      |      | 30%  |      |      | 10%  |      |      | 0                               |  |  |  |  |  |  |  |  |  |  |  |  |  |  |
|------|-----------------------|------|------|------|------|------|------|------|------|------|------|------|------|------|------|---------------------------------|--|--|--|--|--|--|--|--|--|--|--|--|--|--|
| pw   | 50%                   | 30%  | 10%  | 50%  | 30%  | 10%  | 50%  | 30%  | 10%  | 50%  | 30%  | 10%  | 50%  | 30%  | 10%  | 0                               |  |  |  |  |  |  |  |  |  |  |  |  |  |  |
| pfc  | 20%                   |      |      | 20%  |      |      | 20%  |      |      | 20%  |      |      | 20%  |      |      | 0                               |  |  |  |  |  |  |  |  |  |  |  |  |  |  |
| RCR  | RCR:Room Cavity Ratio |      |      |      |      |      |      |      |      |      |      |      |      |      |      | Wall Exitance Coefficients(WEC) |  |  |  |  |  |  |  |  |  |  |  |  |  |  |
| 0.0  |                       |      |      |      |      |      |      |      |      |      |      |      |      |      |      |                                 |  |  |  |  |  |  |  |  |  |  |  |  |  |  |
| 1.0  | .328                  | .187 | .059 | .320 | .182 | .058 | .304 | .174 | .056 | .290 | .167 | .054 | .276 | .160 | .052 |                                 |  |  |  |  |  |  |  |  |  |  |  |  |  |  |
| 2.0  | .302                  | .166 | .051 | .295 | .162 | .050 | .281 | .156 | .048 | .268 | .150 | .047 | .256 | .145 | .046 |                                 |  |  |  |  |  |  |  |  |  |  |  |  |  |  |
| 3.0  | .276                  | .147 | .044 | .270 | .145 | .043 | .257 | .139 | .042 | .246 | .135 | .041 | .235 | .130 | .040 |                                 |  |  |  |  |  |  |  |  |  |  |  |  |  |  |
| 4.0  | .253                  | .132 | .039 | .248 | .130 | .038 | .236 | .125 | .037 | .226 | .121 | .037 | .216 | .118 | .036 |                                 |  |  |  |  |  |  |  |  |  |  |  |  |  |  |
| 5.0  | .233                  | .119 | .034 | .228 | .117 | .034 | .218 | .113 | .033 | .209 | .110 | .033 | .200 | .107 | .032 |                                 |  |  |  |  |  |  |  |  |  |  |  |  |  |  |
| 6.0  | .216                  | .108 | .031 | .211 | .107 | .031 | .202 | .103 | .030 | .194 | .101 | .030 | .186 | .098 | .029 |                                 |  |  |  |  |  |  |  |  |  |  |  |  |  |  |
| 7.0  | .200                  | .099 | .028 | .196 | .098 | .028 | .188 | .095 | .027 | .180 | .092 | .027 | .173 | .090 | .026 |                                 |  |  |  |  |  |  |  |  |  |  |  |  |  |  |
| 8.0  | .187                  | .091 | .026 | .183 | .090 | .025 | .176 | .088 | .025 | .169 | .085 | .025 | .162 | .083 | .024 |                                 |  |  |  |  |  |  |  |  |  |  |  |  |  |  |
| 9.0  | .175                  | .084 | .024 | .171 | .083 | .023 | .165 | .081 | .023 | .158 | .079 | .023 | .152 | .077 | .022 |                                 |  |  |  |  |  |  |  |  |  |  |  |  |  |  |
| 10.0 | .164                  | .079 | .022 | .161 | .078 | .022 | .155 | .076 | .021 | .149 | .074 | .021 | .144 | .072 | .021 |                                 |  |  |  |  |  |  |  |  |  |  |  |  |  |  |

| pcc  | 80%                   |      |      | 70%  |      |      | 50%   |      |      | 30%  |      |      | 10%  |      |      | 0 |
|------|-----------------------|------|------|------|------|------|---|------|------|------|------|------|------|------|------|---|
| pw   | 50%                   | 30%  | 10%  | 50%  | 30%  | 10%  | 50%   | 30%  | 10%  | 50%  | 30%  | 10%  | 50%  | 30%  | 10%  | 0 |
| pfc  | 20%                   |      |      | 20%  |      |      | 20%   |      |      | 20%  |      |      | 20%  |      |      | 0 |
| RCR  | RCR:Room Cavity Ratio |      |      |      |      |      | Ceiling Cavity Exitance Coefficients (CCEC) |      |      |      |      |      |      |      |      |   |
| 0.0  | .222                  | .222 | .222 | .190 | .190 | .190 | .129  | .129 | .129 | .074 | .074 | .074 | .024 | .024 | .024 |   |
| 1.0  | .213                  | .188 | .165 | .183 | .161 | .142 | .125  | .111 | .098 | .072 | .064 | .057 | .023 | .021 | .018 |   |
| 2.0  | .206                  | .164 | .129 | .176 | .141 | .111 | .121  | .098 | .078 | .070 | .057 | .045 | .022 | .018 | .015 |   |
| 3.0  | .198                  | .146 | .105 | .170 | .126 | .091 | .116  | .088 | .064 | .067 | .051 | .038 | .022 | .017 | .012 |   |
| 4.0  | .190                  | .133 | .090 | .163 | .115 | .078 | .112  | .080 | .055 | .065 | .047 | .033 | .021 | .015 | .011 |   |
| 5.0  | .183                  | .123 | .079 | .157 | .106 | .069 | .108  | .074 | .049 | .063 | .044 | .029 | .020 | .014 | .010 |   |
| 6.0  | .175                  | .115 | .071 | .151 | .099 | .062 | .104  | .070 | .044 | .060 | .041 | .026 | .019 | .013 | .009 |   |
| 7.0  | .168                  | .108 | .066 | .145 | .094 | .057 | .100  | .066 | .040 | .058 | .039 | .024 | .019 | .013 | .008 |   |
| 8.0  | .162                  | .102 | .061 | .139 | .089 | .053 | .096  | .062 | .038 | .056 | .037 | .023 | .018 | .012 | .007 |   |
| 9.0  | .156                  | .097 | .058 | .134 | .084 | .050 | .093  | .059 | .036 | .054 | .035 | .021 | .018 | .012 | .007 |   |
| 10.0 | .150                  | .093 | .055 | .129 | .081 | .048 | .090  | .057 | .034 | .052 | .034 | .020 | .017 | .011 | .007 |   |

C Range: 0 - 360DEG  
C Interval: 30.0DEG  
Test Speed: HIGH  
Temperature:25.3℃  
Operators:  
Test Date:2025-02-25

γ Range: 0 - 180DEG  
γ Interval: 1.0DEG  
Test System:EVERFINE GO-2000B\_V1 SYSTEM V2.00.488  
Humidity:65.0%  
Test Distance:6.360m [K=1.0000]  
Remarks:

UGR(Unified Glare Rating) Table

|   |                  |      |      |      |                 |                |      |                  |      |      |
|---|------------------|------|------|------|-----------------|----------------|------|------------------|------|------|
| Test:U:24.00V I:0.7139A P:17.13W PF:1.000 Freq:0Hz<br>Lamp Flux:427.72x1 lm |                  |      |      |      |                 |                |      |                  |      |      |
| NAME: SF16-24V-5050-72-RGBW(2700K)-80-ALL                                   |                  |      |      |      | TYPE:           |                |      | WEIGHT:          |      |      |
| SPEC.:  |                  |      |      |      | DIM.: Length=1m |                |      | SERIAL No.:      |      |      |
| MFR.: OLympia lighting  |                  |      |      |      | SUR.:           |                |      | Shielding Angle: |      |      |
| ceiling/cavity  | 0.7              | 0.7  | 0.5  | 0.5  | 0.3             | 0.7            | 0.7  | 0.5              | 0.5  | 0.3  |
| walls   | 0.5              | 0.3  | 0.5  | 0.3  | 0.3             | 0.5            | 0.3  | 0.5              | 0.3  | 0.3  |
| working plane   | 0.2              | 0.2  | 0.2  | 0.2  | 0.2             | 0.2            | 0.2  | 0.2              | 0.2  | 0.2  |
| Room dimensions   | Viewed crosswise |      |      |      |                 | Viewed endwise |      |                  |      |      |
| x = 2H y = 2H   | 22.4             | 23.8 | 22.7 | 24.1 | 24.4            | 22.6           | 24.1 | 22.9             | 24.4 | 24.7 |
| 3H  | 23.9             | 25.3 | 24.3 | 25.6 | 25.9            | 24.3           | 25.7 | 24.7             | 26.0 | 26.3 |
| 4H  | 24.6             | 25.9 | 25.0 | 26.2 | 26.6            | 25.1           | 26.4 | 25.4             | 26.7 | 27.0 |
| 6H  | 25.1             | 26.3 | 25.5 | 26.7 | 27.0            | 25.7           | 26.9 | 26.1             | 27.3 | 27.7 |
| 8H  | 25.3             | 26.5 | 25.7 | 26.8 | 27.2            | 26.0           | 27.2 | 26.4             | 27.5 | 27.9 |
| 12H   | 25.4             | 26.5 | 25.8 | 26.9 | 27.3            | 26.2           | 27.3 | 26.6             | 27.7 | 28.1 |
| 4H 2H   | 23.0             | 24.3 | 23.4 | 24.6 | 25.0            | 23.2           | 24.5 | 23.6             | 24.8 | 25.2 |
| 3H  | 24.8             | 25.9 | 25.2 | 26.3 | 26.7            | 25.1           | 26.2 | 25.5             | 26.6 | 27.0 |
| 4H  | 25.6             | 26.6 | 26.0 | 27.0 | 27.4            | 26.0           | 27.0 | 26.4             | 27.4 | 27.9 |
| 6H  | 26.2             | 27.1 | 26.7 | 27.6 | 28.0            | 26.8           | 27.7 | 27.2             | 28.1 | 28.6 |
| 8H  | 26.4             | 27.3 | 26.9 | 27.7 | 28.2            | 27.1           | 28.0 | 27.6             | 28.4 | 28.9 |
| 12H   | 26.6             | 27.4 | 27.1 | 27.9 | 28.4            | 27.4           | 28.2 | 27.9             | 28.7 | 29.2 |
| 8H 4H   | 25.9             | 26.8 | 26.4 | 27.2 | 27.7            | 26.3           | 27.1 | 26.7             | 27.6 | 28.0 |
| 6H  | 26.7             | 27.4 | 27.2 | 27.9 | 28.4            | 27.2           | 28.0 | 27.7             | 28.4 | 29.0 |
| 8H  | 27.0             | 27.7 | 27.6 | 28.2 | 28.7            | 27.7           | 28.3 | 28.2             | 28.8 | 29.4 |
| 12H   | 27.3             | 27.9 | 27.8 | 28.4 | 28.9            | 28.1           | 28.6 | 28.6             | 29.1 | 29.7 |
| 12H 4H  | 25.9             | 26.7 | 26.4 | 27.2 | 27.7            | 26.3           | 27.1 | 26.8             | 27.5 | 28.0 |
| 6H  | 26.8             | 27.4 | 27.3 | 27.9 | 28.5            | 27.3           | 27.9 | 27.8             | 28.4 | 29.0 |
| 8H  | 27.2             | 27.7 | 27.7 | 28.2 | 28.8            | 27.8           | 28.3 | 28.3             | 28.9 | 29.4 |
| Variations with the observer position at spacings(CIE Pub.117):             |                  |      |      |      |                 |                |      |                  |      |      |
| S = 1.0H  | + 0.1 / - 0.2    |      |      |      |                 | + 0.1 / - 0.2  |      |                  |      |      |
| 1.5H  | + 0.2 / - 0.3    |      |      |      |                 | + 0.2 / - 0.3  |      |                  |      |      |
| 2.0H  | + 0.1 / - 0.3    |      |      |      |                 | + 0.1 / - 0.2  |      |                  |      |      |

CIE Pub.117, 427.7 lm Total Lamp Luminous Flux Correct (8log(F/F0) = -3.0)  
Area: 0.016 m2

C Range: 0 - 360DEG  
C Interval: 30.0DEG  
Test Speed: HIGH  
Temperature:25.3℃  
Operators:  
Test Date:2025-02-25

γ Range: 0 - 180DEG  
γ Interval: 1.0DEG  
Test System:EVERFINE GO-2000B\_V1 SYSTEM V2.00.488  
Humidity:65.0%  
Test Distance:6.360m [K=1.0000]  
Remarks:

## UTILIZATION FACTORS TABLE

|   |                 |                  |
|---|-----------------|------------------|
| Test:U:24.00V I:0.7139A P:17.13W PF:1.000 Freq:0Hz<br>Lamp Flux:427.72x1 lm |                 |                  |
| NAME: SF16-24V-5050-72-RGBW(2700K)-80-ALL                                   | TYPE:           | WEIGHT:          |
| SPEC.:  | DIM.: Length=1m | SERIAL No.:      |
| MFR.: OLympia lighting  | SUR.:           | Shielding Angle: |

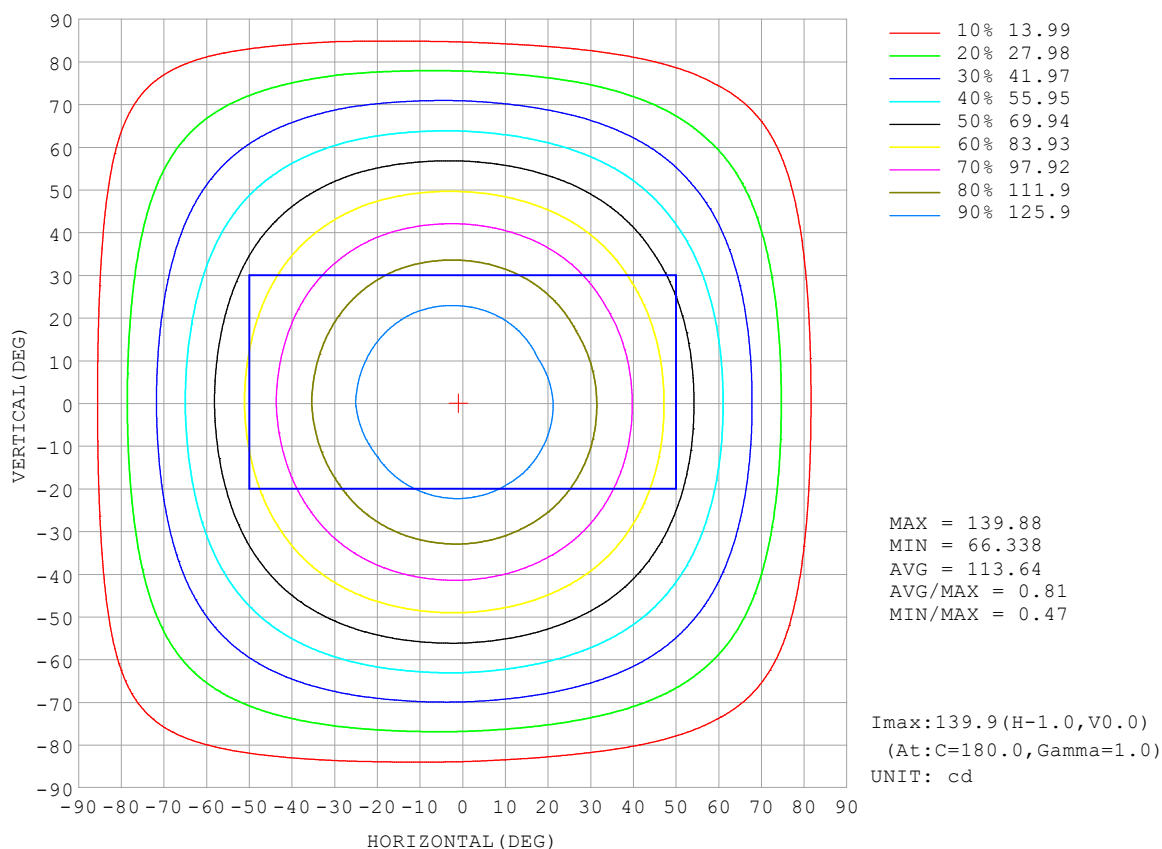
| REFLECTANCE                      |  |     |           |     |     |     |     |               |     |        |
|----------------------------------|--|-----|-----------|-----|-----|-----|-----|---------------|-----|--------|
| Ceiling                          | 0.8  | 0.8 | 0.8       | 0.7 | 0.7 | 0.7 | 0.5 | 0.5           | 0.5 | 0      |
| Walls                            | 0.7  | 0.5 | 0.3       | 0.7 | 0.5 | 0.3 | 0.7 | 0.5           | 0.3 | 0      |
| Working plane                    | 0.2  | 0.2 | 0.2       | 0.2 | 0.2 | 0.2 | 0.2 | 0.2           | 0.2 | 0      |
| ROOM INDEX                       | UTILIZATION FACTORS (PERCENT) $k(RI) \times RCR = 5$ |     |           |     |     |     |     |               |     |        |
| $k = 0.60$                       | 55   | 44  | 37        | 55  | 43  | 37  | 53  | 43            | 36  | 30     |
| 0.80                             | 65   | 53  | 46        | 64  | 53  | 46  | 62  | 52            | 45  | 38     |
| 1.00                             | 73   | 62  | 54        | 72  | 61  | 54  | 69  | 62            | 53  | 46     |
| 1.25                             | 80   | 70  | 62        | 79  | 69  | 62  | 76  | 67            | 61  | 53     |
| 1.50                             | 86   | 75  | 68        | 84  | 74  | 67  | 80  | 72            | 66  | 57     |
| 2.00                             | 92   | 83  | 77        | 90  | 82  | 76  | 86  | 79            | 74  | 65     |
| 2.50                             | 97   | 88  | 82        | 94  | 87  | 81  | 90  | 83            | 78  | 69     |
| 3.00                             | 100  | 93  | 87        | 97  | 91  | 85  | 93  | 87            | 83  | 73     |
| 4.00                             | 104  | 98  | 93        | 101 | 96  | 91  | 96  | 92            | 88  | 78     |
| 5.00                             | 107  | 101 | 97        | 104 | 99  | 95  | 99  | 95            | 91  | 81     |
| ROOM INDEX                       | UF (total)   |     |           |     |     |     |     |               |     | Direct |
| According to DIN EN 13032-2 2004 |  |     | Suspended |     |     |     |     | SHRNOM = 1.25 |     |        |

C Range: 0 - 360DEG  
 C Interval: 30.0DEG  
 Test Speed: HIGH  
 Temperature: 25.3 °C  
 Operators:  
 Test Date: 2025-02-25

γ Range: 0 - 180DEG  
 γ Interval: 1.0DEG  
 Test System: EVERFINE GO-2000B\_V1 SYSTEM V2.00.488  
 Humidity: 65.0%  
 Test Distance: 6.360m [K=1.0000]  
 Remarks:

## ISOCANDELA DIAGRAM

|   |                 |                  |
|---|-----------------|------------------|
| Test:U:24.00V I:0.7139A P:17.13W PF:1.000 Freq:0Hz<br>Lamp Flux:427.72x1 lm |                 |                  |
| NAME: SF16-24V-5050-72-RGBW(2700K)-80-ALL                                   | TYPE:           | WEIGHT:          |
| SPEC.:  | DIM.: Length=1m | SERIAL No.:      |
| MFR.: OLympia lighting  | SUR.:           | Shielding Angle: |



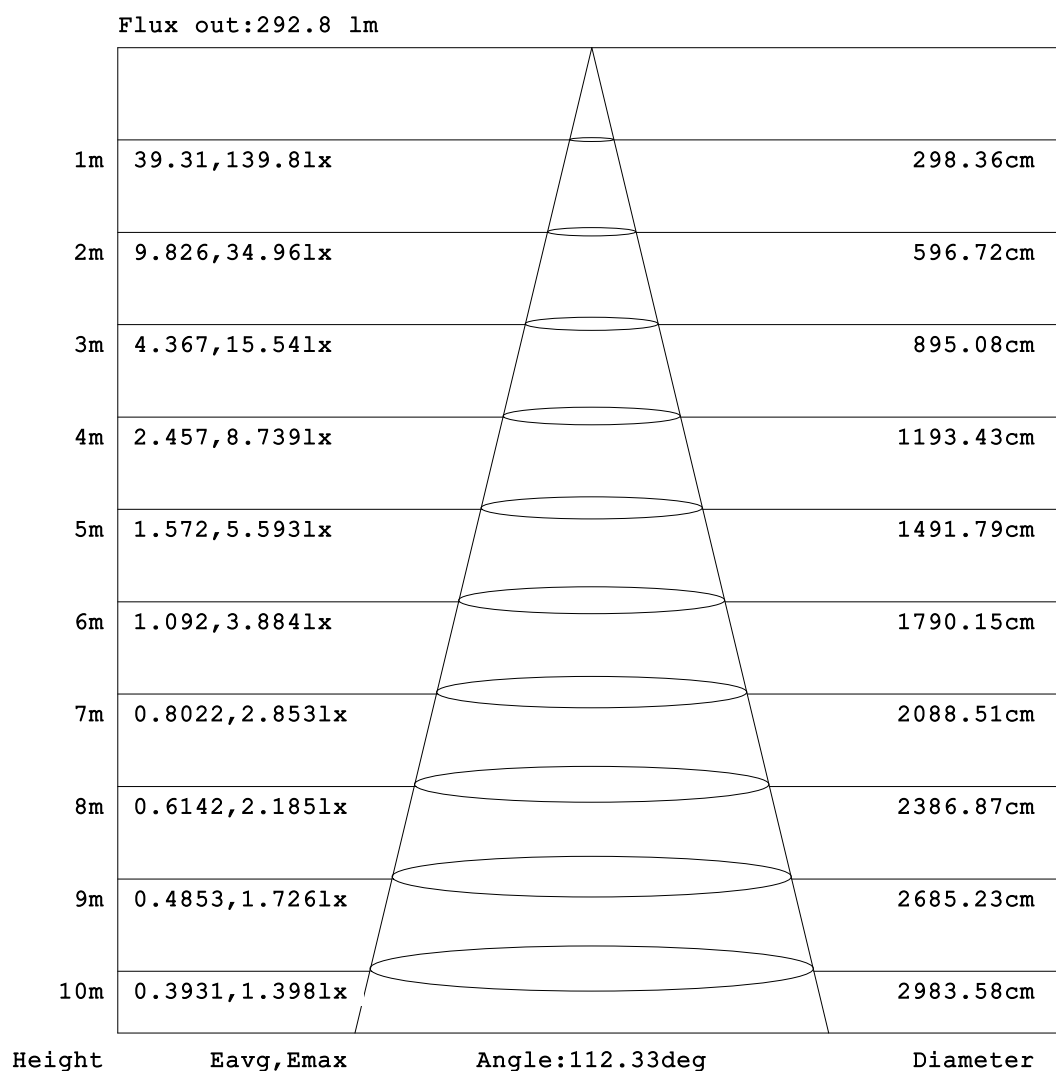
C Range: 0 - 360DEG  
C Interval: 30.0DEG  
Test Speed: HIGH  
Temperature:25.3℃  
Operators:  
Test Date:2025-02-25

γ Range: 0 - 180DEG  
γ Interval: 1.0DEG  
Test System:EVERFINE GO-2000B\_V1 SYSTEM V2.00.488  
Humidity:65.0%  
Test Distance:6.360m [K=1.0000]  
Remarks:



## AAI Figure

|   |                 |                  |
|---|-----------------|------------------|
| Test:U:24.00V I:0.7139A P:17.13W PF:1.000 Freq:0Hz<br>Lamp Flux:427.72x1 lm |                 |                  |
| NAME: SF16-24V-5050-72-RGBW(2700K)-80-ALL                                   | TYPE:           | WEIGHT:          |
| SPEC.:  | DIM.: Length=1m | SERIAL No.:      |
| MFR.: OLympia lighting  | SUR.:           | Shielding Angle: |



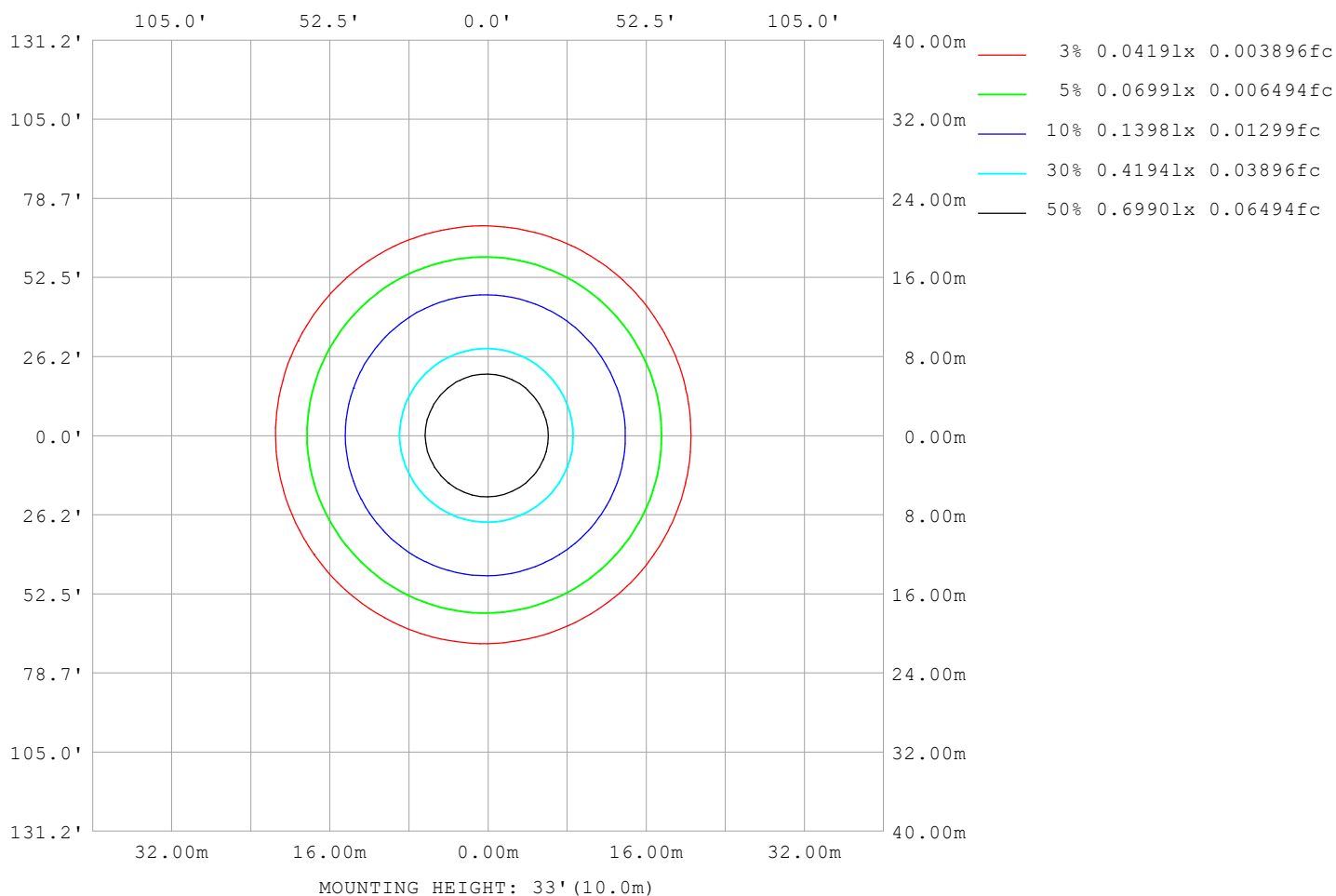
Note:The Curves indicate the illuminated area and the average illumination when the luminaire is at different distance.

C Range: 0 - 360DEG  
C Interval: 30.0DEG  
Test Speed: HIGH  
Temperature:25.3℃  
Operators:  
Test Date:2025-02-25

γ Range: 0 - 180DEG  
γ Interval: 1.0DEG  
Test System:EVERFINE GO-2000B\_V1 SYSTEM V2.00.488  
Humidity:65.0%  
Test Distance:6.360m [K=1.0000]  
Remarks:

## ISOLUX DIAGRAM

|   |                 |                  |
|---|-----------------|------------------|
| Test:U:24.00V I:0.7139A P:17.13W PF:1.000 Freq:0Hz<br>Lamp Flux:427.72x1 lm |                 |                  |
| NAME: SF16-24V-5050-72-RGBW(2700K)-80-ALL                                   | TYPE:           | WEIGHT:          |
| SPEC.:  | DIM.: Length=1m | SERIAL No.:      |
| MFR.: OLympia lighting  | SUR.:           | Shielding Angle: |



C Range: 0 - 360DEG  
C Interval: 30.0DEG  
Test Speed: HIGH  
Temperature:25.3℃  
Operators:  
Test Date:2025-02-25

γ Range: 0 - 180DEG  
γ Interval: 1.0DEG  
Test System:EVERFINE GO-2000B\_V1 SYSTEM V2.00.488  
Humidity:65.0%  
Test Distance:6.360m [K=1.0000]  
Remarks:

## LED Avg.L Report

|   |                 |                  |
|---|-----------------|------------------|
| Test:U:24.00V I:0.7139A P:17.13W PF:1.000 Freq:0Hz<br>Lamp Flux:427.72x1 lm |                 |                  |
| NAME: SF16-24V-5050-72-RGBW(2700K)-80-ALL                                   | TYPE:           | WEIGHT:          |
| SPEC.:  | DIM.: Length=1m | SERIAL No.:      |
| MFR.: OLympia lighting  | SUR.:           | Shielding Angle: |

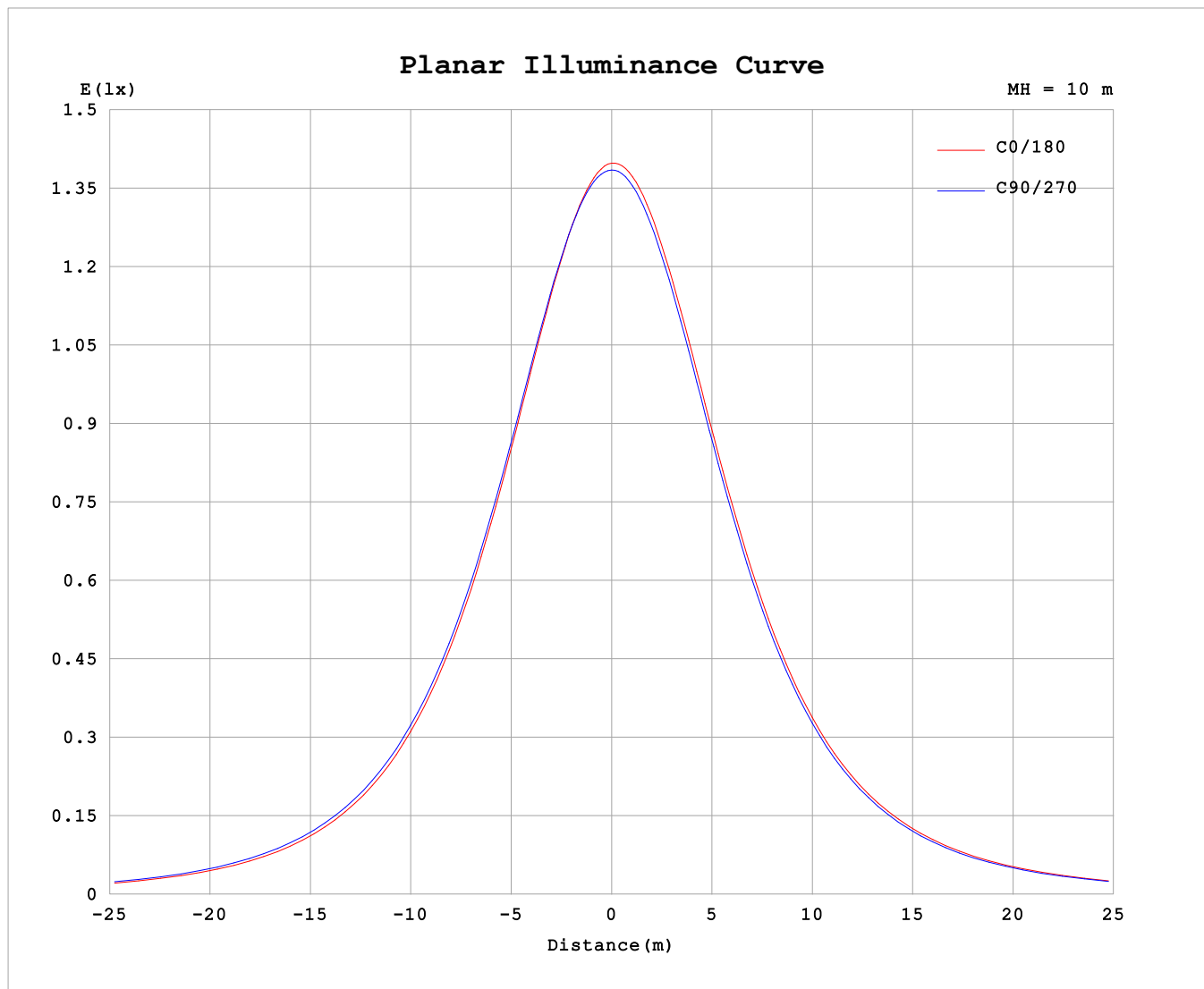
| AvgL             | cd/m2 |
|------------------|-------|
| L_0~180 (65) av  | 7610  |
| L_0~180 (75) av  | 7499  |
| L_0~180 (85) av  | 8378  |
| L_90~270 (65) av | 7818  |
| L_90~270 (75) av | 7906  |
| L_90~270 (85) av | 8967  |
| L_45 (65) av     | 7725  |
| L_45 (75) av     | 7722  |
| L_45 (85) av     | 8588  |

Standard: GB/T 29293-2012

C Range: 0 - 360DEG  
C Interval: 30.0DEG  
Test Speed: HIGH  
Temperature:25.3℃  
Operators:  
Test Date:2025-02-25

γ Range: 0 - 180DEG  
γ Interval: 1.0DEG  
Test System:EVERFINE GO-2000B\_V1 SYSTEM V2.00.488  
Humidity:65.0%  
Test Distance:6.360m [K=1.0000]  
Remarks:

## Planar Illuminance Curve



C Range: 0 - 360DEG  
C Interval: 30.0DEG  
Test Speed: HIGH  
Temperature: 25.3 °C  
Operators:  
Test Date: 2025-02-25

$\gamma$  Range: 0 - 180DEG  
 $\gamma$  Interval: 1.0DEG  
Test System: EVERFINE GO-2000B\_V1 SYSTEM V2.00.488  
Humidity: 65.0%  
Test Distance: 6.360m [K=1.0000]  
Remarks:

## LUMINOUS DISTRIBUTION INTENSITY DATA

|   |                 |                  |
|---|-----------------|------------------|
| Test:U:24.00V I:0.7139A P:17.13W PF:1.000 Freq:0Hz<br>Lamp Flux:427.72x1 lm |                 |                  |
| NAME: SF16-24V-5050-72-RGBW(2700K)-80-ALL                                   | TYPE:           | WEIGHT:          |
| SPEC.:  | DIM.: Length=1m | SERIAL No.:      |
| MFR.: OLympia lighting  | SUR.:           | Shielding Angle: |

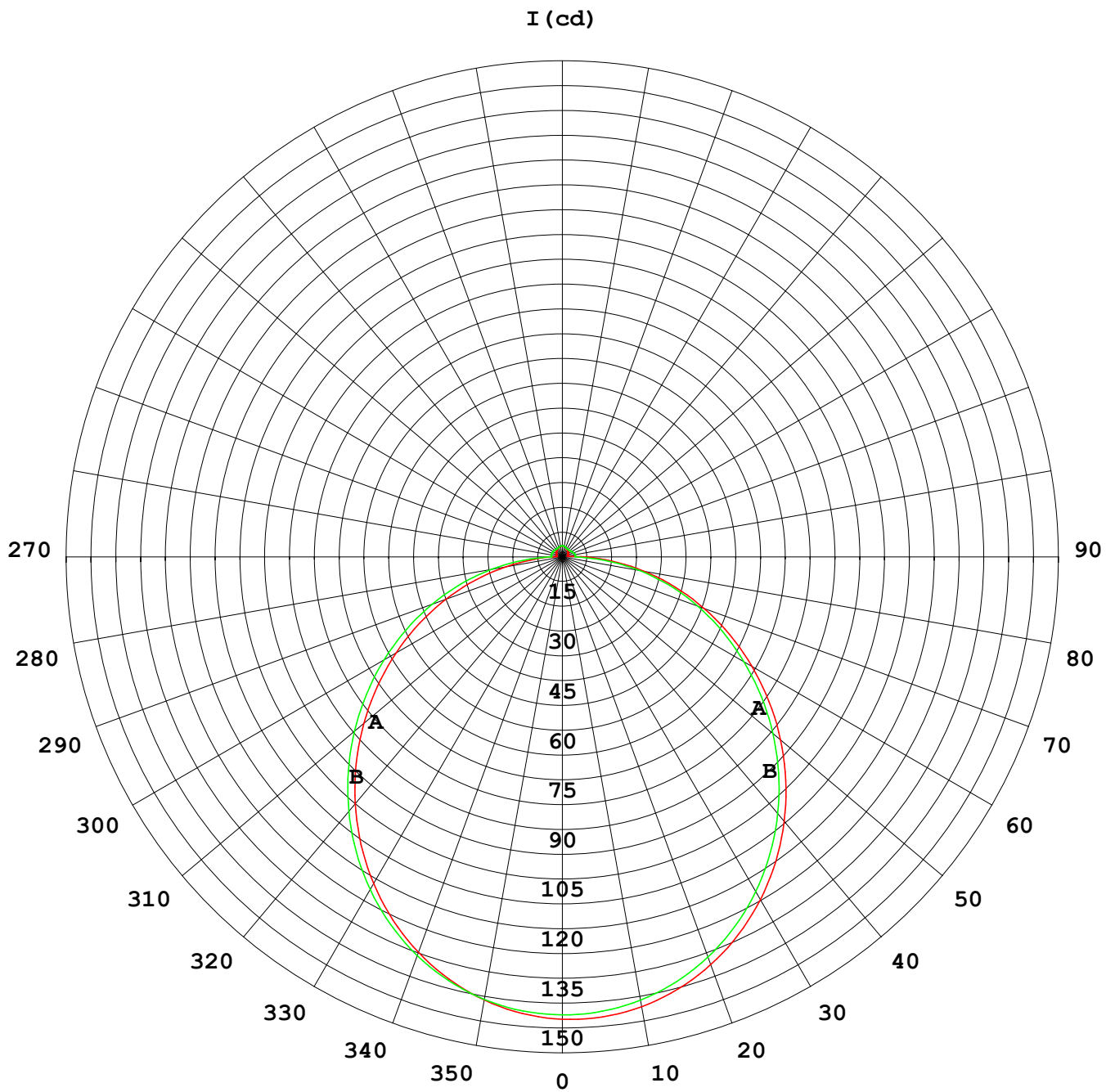
Table--1

UNIT: cd

| C (DEG)<br>γ (DEG) | 0    | 30   | 60   | 90   | 120  | 150  | 180  | 210  | 240  | 270  | 300  | 330  |  |  |  |  |  |  |  |
|--------------------|------|------|------|------|------|------|------|------|------|------|------|------|--|--|--|--|--|--|--|
| 0                  | 139  | 139  | 139  | 139  | 139  | 139  | 139  | 139  | 139  | 139  | 139  | 139  |  |  |  |  |  |  |  |
| 5                  | 138  | 138  | 138  | 138  | 138  | 138  | 138  | 139  | 139  | 138  | 138  | 138  |  |  |  |  |  |  |  |
| 10                 | 135  | 135  | 136  | 136  | 137  | 137  | 137  | 137  | 137  | 136  | 136  | 135  |  |  |  |  |  |  |  |
| 15                 | 131  | 132  | 132  | 133  | 134  | 134  | 134  | 134  | 134  | 133  | 133  | 132  |  |  |  |  |  |  |  |
| 20                 | 126  | 127  | 128  | 129  | 129  | 130  | 130  | 130  | 130  | 129  | 128  | 127  |  |  |  |  |  |  |  |
| 25                 | 120  | 121  | 122  | 123  | 124  | 125  | 125  | 125  | 125  | 124  | 122  | 121  |  |  |  |  |  |  |  |
| 30                 | 113  | 114  | 115  | 116  | 118  | 119  | 119  | 119  | 118  | 117  | 116  | 114  |  |  |  |  |  |  |  |
| 35                 | 105  | 106  | 107  | 109  | 110  | 111  | 112  | 112  | 111  | 110  | 108  | 106  |  |  |  |  |  |  |  |
| 40                 | 96.7 | 97.7 | 99.0 | 101  | 102  | 103  | 104  | 104  | 103  | 102  | 99.9 | 97.9 |  |  |  |  |  |  |  |
| 45                 | 87.5 | 88.5 | 89.9 | 91.7 | 93.1 | 94.3 | 94.8 | 94.8 | 94.3 | 92.7 | 90.9 | 88.8 |  |  |  |  |  |  |  |
| 50                 | 77.8 | 78.8 | 80.4 | 82.2 | 83.7 | 84.9 | 85.5 | 85.5 | 84.9 | 83.3 | 81.4 | 79.1 |  |  |  |  |  |  |  |
| 55                 | 67.8 | 68.8 | 70.4 | 72.4 | 73.9 | 75.1 | 75.8 | 75.7 | 75.2 | 73.5 | 71.5 | 69.2 |  |  |  |  |  |  |  |
| 60                 | 57.6 | 58.6 | 60.3 | 62.3 | 63.8 | 65.0 | 65.7 | 65.7 | 65.2 | 63.5 | 61.5 | 59.1 |  |  |  |  |  |  |  |
| 65                 | 47.4 | 48.4 | 50.1 | 52.2 | 53.6 | 54.7 | 55.6 | 55.6 | 55.1 | 53.6 | 51.4 | 48.9 |  |  |  |  |  |  |  |
| 70                 | 37.2 | 38.1 | 39.9 | 41.9 | 43.4 | 44.4 | 45.3 | 45.3 | 45.2 | 43.7 | 41.5 | 38.7 |  |  |  |  |  |  |  |
| 75                 | 27.1 | 28.0 | 29.8 | 31.8 | 33.2 | 34.2 | 35.1 | 35.1 | 35.2 | 33.7 | 31.6 | 28.6 |  |  |  |  |  |  |  |
| 80                 | 17.0 | 17.9 | 19.8 | 21.7 | 23.1 | 24.0 | 24.9 | 25.0 | 25.1 | 23.6 | 21.4 | 18.6 |  |  |  |  |  |  |  |
| 85                 | 8.41 | 8.67 | 9.86 | 11.8 | 13.1 | 14.1 | 15.0 | 15.0 | 14.8 | 13.2 | 11.2 | 9.31 |  |  |  |  |  |  |  |
| 90                 | 3.39 | 3.35 | 3.58 | 3.36 | 4.81 | 6.03 | 6.81 | 6.80 | 5.82 | 4.00 | 4.32 | 3.98 |  |  |  |  |  |  |  |
| 95                 | 1.80 | 1.84 | 2.87 | 3.49 | 2.92 | 2.03 | 2.04 | 2.55 | 3.42 | 3.96 | 3.49 | 2.46 |  |  |  |  |  |  |  |
| 100                | 1.77 | 1.91 | 2.94 | 3.49 | 2.92 | 1.88 | 1.58 | 2.33 | 3.38 | 3.90 | 3.51 | 2.42 |  |  |  |  |  |  |  |
| 105                | 1.89 | 2.01 | 2.96 | 3.47 | 2.92 | 1.95 | 1.64 | 2.31 | 3.23 | 3.81 | 3.39 | 2.45 |  |  |  |  |  |  |  |
| 110                | 2.02 | 2.11 | 2.97 | 3.38 | 2.92 | 2.05 | 1.73 | 2.30 | 3.11 | 3.61 | 3.23 | 2.46 |  |  |  |  |  |  |  |
| 115                | 2.14 | 2.22 | 2.98 | 3.31 | 2.95 | 2.17 | 1.84 | 2.30 | 3.00 | 3.43 | 3.10 | 2.47 |  |  |  |  |  |  |  |
| 120                | 2.25 | 2.32 | 2.99 | 3.26 | 2.95 | 2.28 | 1.96 | 2.33 | 2.90 | 3.26 | 2.99 | 2.47 |  |  |  |  |  |  |  |
| 125                | 2.37 | 2.42 | 2.99 | 3.22 | 2.93 | 2.39 | 2.08 | 2.36 | 2.83 | 3.11 | 2.90 | 2.49 |  |  |  |  |  |  |  |
| 130                | 2.48 | 2.52 | 2.99 | 3.16 | 2.92 | 2.49 | 2.20 | 2.42 | 2.78 | 2.99 | 2.83 | 2.54 |  |  |  |  |  |  |  |
| 135                | 2.60 | 2.62 | 2.95 | 3.10 | 2.89 | 2.60 | 2.33 | 2.50 | 2.78 | 2.91 | 2.81 | 2.58 |  |  |  |  |  |  |  |
| 140                | 2.70 | 2.73 | 2.92 | 3.05 | 2.88 | 2.71 | 2.45 | 2.59 | 2.79 | 2.87 | 2.81 | 2.65 |  |  |  |  |  |  |  |
| 145                | 2.79 | 2.82 | 2.92 | 3.03 | 2.89 | 2.83 | 2.58 | 2.68 | 2.83 | 2.86 | 2.84 | 2.73 |  |  |  |  |  |  |  |
| 150                | 2.89 | 2.93 | 2.94 | 3.04 | 2.96 | 2.94 | 2.72 | 2.79 | 2.89 | 2.88 | 2.89 | 2.83 |  |  |  |  |  |  |  |
| 155                | 3.00 | 3.02 | 3.02 | 3.09 | 3.06 | 3.05 | 2.85 | 2.90 | 2.99 | 2.96 | 2.98 | 2.93 |  |  |  |  |  |  |  |
| 160                | 3.10 | 3.13 | 3.12 | 3.19 | 3.16 | 3.16 | 2.98 | 3.01 | 3.09 | 3.07 | 3.09 | 3.03 |  |  |  |  |  |  |  |
| 165                | 3.19 | 3.22 | 3.22 | 3.28 | 3.25 | 3.25 | 3.10 | 3.12 | 3.20 | 3.18 | 3.19 | 3.14 |  |  |  |  |  |  |  |
| 170                | 3.27 | 3.29 | 3.30 | 3.35 | 3.32 | 3.32 | 3.22 | 3.21 | 3.29 | 3.28 | 3.29 | 3.23 |  |  |  |  |  |  |  |
| 175                | 3.31 | 3.34 | 3.35 | 3.41 | 3.37 | 3.38 | 3.30 | 3.30 | 3.37 | 3.36 | 3.37 | 3.31 |  |  |  |  |  |  |  |
| 180                | 3.33 | 3.35 | 3.38 | 3.42 | 3.39 | 3.39 | 3.34 | 3.34 | 3.40 | 3.41 | 3.41 | 3.37 |  |  |  |  |  |  |  |

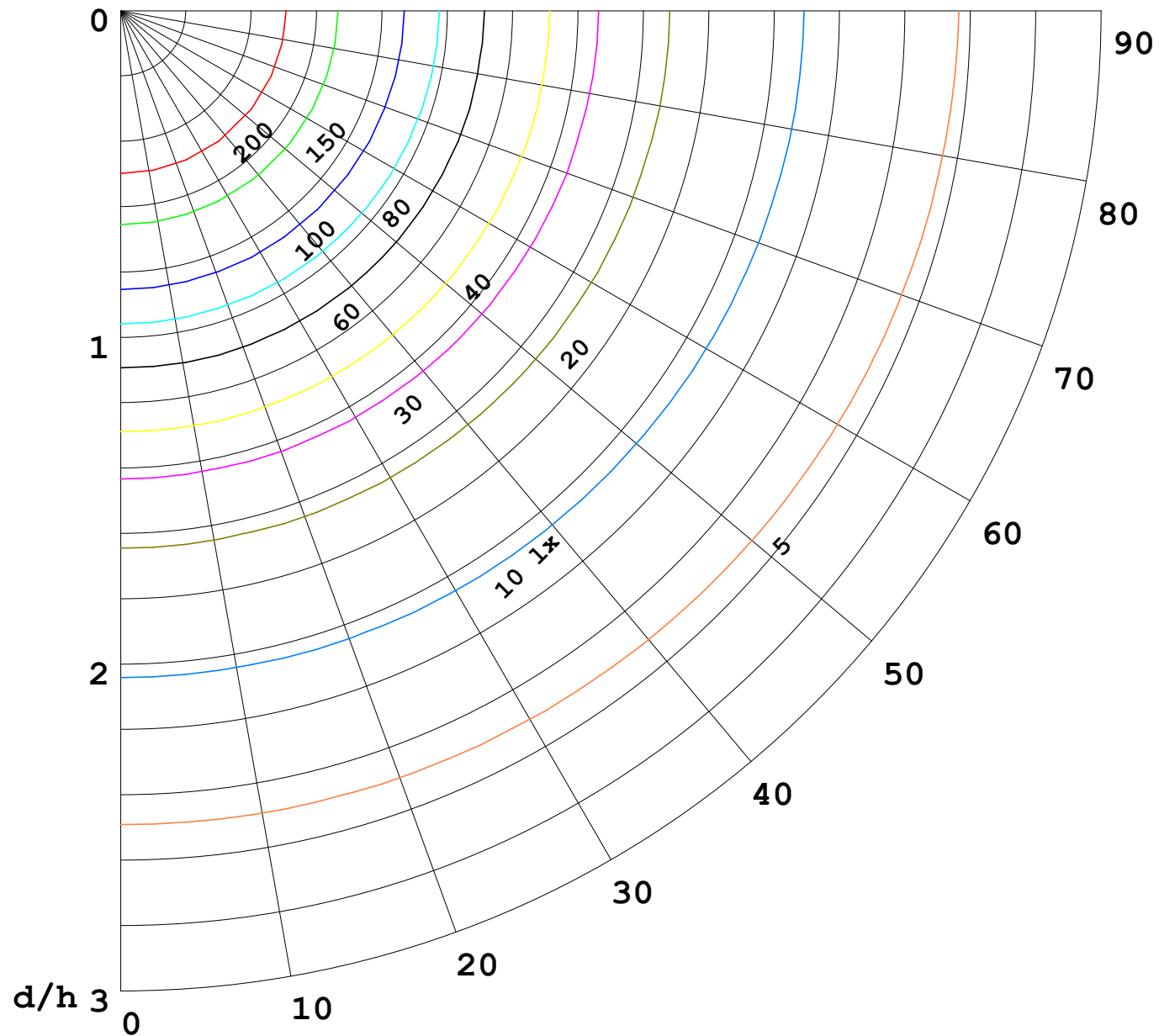
C Range: 0 - 360DEG  
C Interval: 30.0DEG  
Test Speed: HIGH  
Temperature:25.3℃  
Operators:  
Test Date:2025-02-25

γ Range: 0 - 180DEG  
γ Interval: 1.0DEG  
Test System:EVERFINE GO-2000B\_V1 SYSTEM V2.00.488  
Humidity:65.0%  
Test Distance:6.360m [K=1.0000]  
Remarks:



1000 lm

$\kappa = 1$



F = 1000 lm  
 K = 0.7  
 Hcc = 0.8 m  
 Hfc = 0.0 m  
 Eave = 100 lx

|       | Pcc | Pw | Pfc |
|-------|-----|----|-----|
| ————— | 70  | 50 | 30  |
| ————— | 50  | 30 | 20  |

