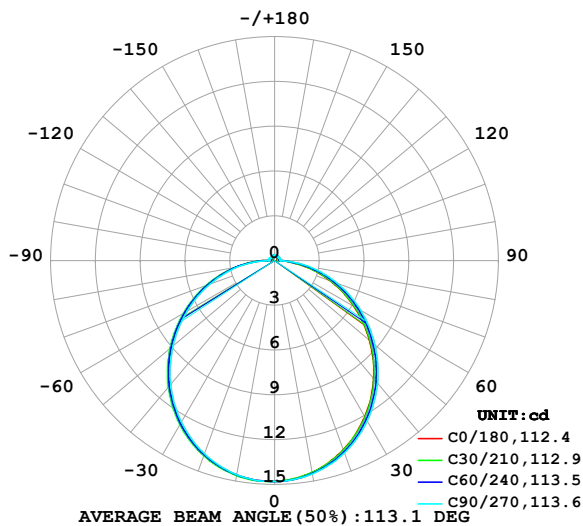


LUMINAIRE PHOTOMETRIC TEST REPORT

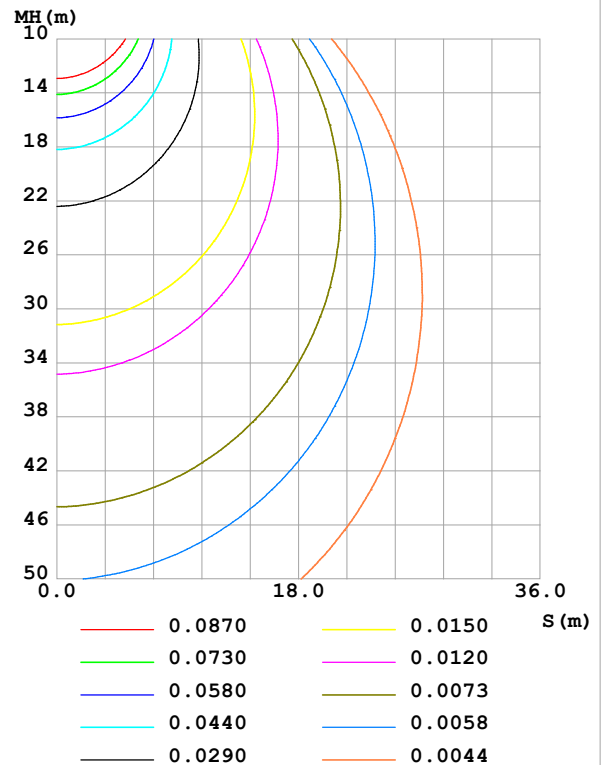
Test:U:24.00V I:0.1426A P:3.423W PF:1.000 Freq:0Hz Lamp Flux:45.669x1 lm		
NAME: SF16-24V-5050-72-RGBW(2700K)-80-R	TYPE:	WEIGHT:
SPEC.:	DIM.: Length=1m	SERIAL No.:
MFR.: OLympia lighting	SUR.:	Shielding Angle:

DATA OF LAMP		PHOTOMETRIC DATA Eff: 13.34 lm/W			
MODEL	5050	Imax (cd)	14.80	S/MH(C0/180)	1.27
NOMINAL POWER(W)		LOR(%)	100.0	S/MH(C90/270)	1.26
RATED VOLTAGE(V)	24	TOTAL FLUX(lm)	45.669	η UP,DN(C0-180)	2.1,47.3
NOMINAL FLUX(lm)	45.669	CIE CLASS	DIRECT	η UP,DN(C180-360)	2.1,48.4
LAMPS INSIDE	1	η up (%)	4.3	CIBSE SHR NOM	1.25
TEST VOLTAGE(V)		η down (%)	95.7	CIBSE SHR MAX	1.35

LUMINOUS INTENSITY DISTRIBUTION DIAGRAM



C0 PLANE ISOLUX DIAGRAM (UNIT:lx)



C Range: 0 - 360DEG
C Interval: 30.0DEG
Test Speed: HIGH
Temperature:25.3℃
Operators:
Test Date:2025-02-25

γ Range: 0 - 180DEG
 γ Interval: 1.0DEG
Test System:EVERFINE GO-2000B_V1 SYSTEM V2.00.488
Humidity:65.0%
Test Distance:6.360m [K=1.0000]
Remarks:

ZONAL FLUX DIAGRAM

ZONAL FLUX DIAGRAM:

γ	C0	C45	C90	C135	C180	C225	C270	C315	γ	Φ zone	Φ total	%lum, lamp
10	14.42	14.46	14.52	14.60	14.60	14.60	14.56	14.46	0- 10	1.400	1.400	3.07,3.07
20	13.47	13.57	13.71	13.86	13.88	13.87	13.77	13.58	10- 20	4.002	5.402	11.8,11.8
30	12.09	12.21	12.42	12.63	12.67	12.64	12.49	12.21	20- 30	6.047	11.45	25.1,25.1
40	10.32	10.48	10.74	11.00	11.05	11.02	10.82	10.49	30- 40	7.271	18.72	41,41
50	8.297	8.484	8.780	9.055	9.119	9.090	8.870	8.496	40- 50	7.550	26.27	57.5,57.5
60	6.156	6.347	6.666	6.929	7.010	6.988	6.756	6.366	50- 60	6.910	33.18	72.7,72.7
70	3.971	4.168	4.481	4.746	4.834	4.822	4.594	4.194	60- 70	5.513	38.69	84.7,84.7
80	1.824	2.007	2.330	2.571	2.661	2.681	2.526	2.050	70- 80	3.587	42.28	92.6,92.6
90	0.3880	0.3860	0.3853	0.6151	0.7406	0.6687	0.4065	0.4095	80- 90	1.443	43.72	95.7,95.7
100	0.2053	0.2771	0.3824	0.2797	0.1877	0.2901	0.3997	0.3010	90-100	0.3610	44.08	96.5,96.5
110	0.2170	0.2887	0.3681	0.2882	0.2024	0.2814	0.3767	0.2896	100-110	0.3058	44.39	97.2,97.2
120	0.2435	0.3003	0.3566	0.2982	0.2259	0.2814	0.3537	0.2882	110-120	0.2892	44.68	97.8,97.8
130	0.2669	0.3119	0.3422	0.3082	0.2523	0.2872	0.3336	0.2953	120-130	0.2663	44.95	98.4,98.4
140	0.2961	0.3221	0.3422	0.3168	0.2874	0.2945	0.3221	0.3025	130-140	0.2362	45.18	98.9,98.9
150	0.3138	0.3337	0.3451	0.3282	0.3138	0.3163	0.3221	0.3140	140-150	0.1986	45.38	99.4,99.4
160	0.3343	0.3453	0.3623	0.3496	0.3403	0.3381	0.3335	0.3396	150-160	0.1540	45.53	99.7,99.7
170	0.3520	0.3627	0.3738	0.3681	0.3608	0.3598	0.3565	0.3610	160-170	0.1001	45.63	99.9,99.9
180	0.3666	0.3685	0.3709	0.3710	0.3608	0.3670	0.3709	0.3681	170-180	0.0348	45.67	100,100
DEG	LUMINOUS INTENSITY:cd									UNIT:lm		

Conical surface Flux(90deg): 22.52 lm

%lum = 49.3%

%lamp = 49.3%

Conical surface Flux(130deg): 36.151 lm

%lum = 79.2%

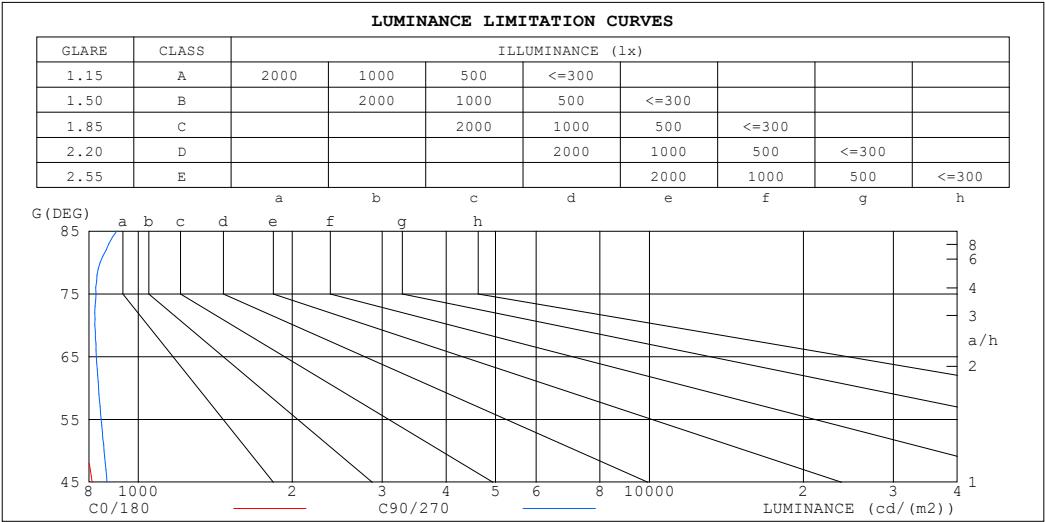
%lamp = 79.2%

C Range: 0 - 360DEG
 C Interval: 30.0DEG
 Test Speed: HIGH
 Temperature:25.3℃
 Operators:
 Test Date:2025-02-25

γ Range: 0 - 180DEG
 γ Interval: 1.0DEG
 Test System:EVERFINE GO-2000B_V1 SYSTEM V2.00.488
 Humidity:65.0%
 Test Distance:6.360m [K=1.0000]
 Remarks:

LUMINANCE LIMITATION CURVES

Test:U:24.00V I:0.1426A P:3.423W PF:1.000 Freq:0Hz Lamp Flux:45.669x1 lm		
NAME: SF16-24V-5050-72-RGBW(2700K)-80-R	TYPE:	WEIGHT:
SPEC.:	DIM.: Length=1m	SERIAL No.:
MFR.: OLYMPIA lighting	SUR.:	Shielding Angle:



LUMINANCE cd/(m2)		
G (DEG)	C0/180	C90/270
85	647	907
80	646	842
75	688	826
70	714	822
65	737	827
60	757	836
55	776	845
50	794	857
45	812	868

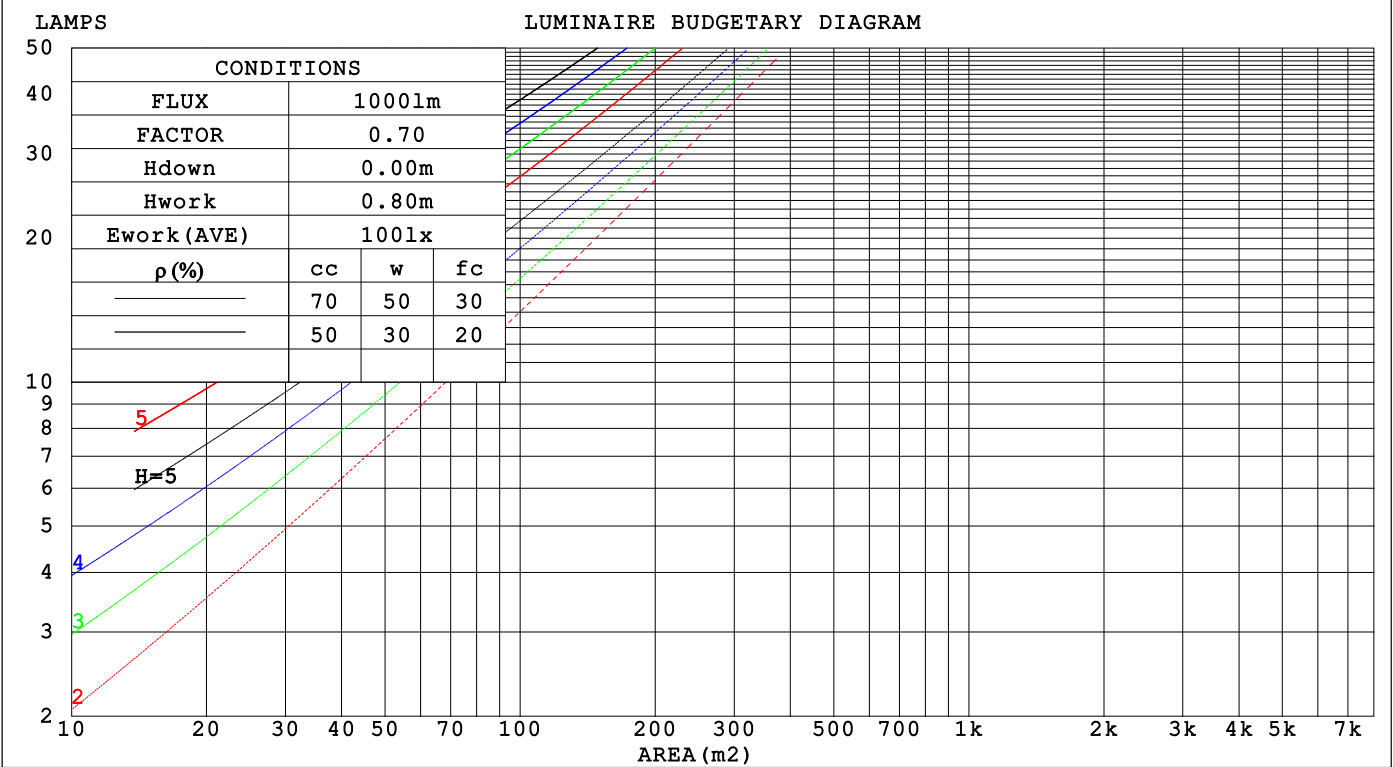
C Range: 0 - 360DEG
C Interval: 30.0DEG
Test Speed: HIGH
Temperature:25.3℃
Operators:
Test Date:2025-02-25

γ Range: 0 - 180DEG
γ Interval: 1.0DEG
Test System:EVERFINE GO-2000B_V1 SYSTEM V2.00.488
Humidity:65.0%
Test Distance:6.360m [K=1.0000]
Remarks:

CU AND LUMINAIRE BUDGETARY ESTIMATE DIAGRAM

Test:U:24.00V I:0.1426A P:3.423W PF:1.000 Freq:0Hz		
Lamp Flux:45.669x1 lm		
NAME: SF16-24V-5050-72-RGBW(2700K)-80-R	TYPE:	WEIGHT:
SPEC.:	DIM.: Length=1m	SERIAL No.:
MFR.: OLYMPIA lighting	SUR.:	Shielding Angle:

pcc	80%			70%			50%			30%			10%			0
pw	50%	30%	10%	50%	30%	10%	50%	30%	10%	50%	30%	10%	50%	30%	10%	0
pfc	20%			20%			20%			20%			20%			0
RCR	RCR:Room Cavity Ratio			Coefficients of Utilization(CU)												
0.0	1.18	1.18	1.18	1.15	1.15	1.15	1.09	1.09	1.09	1.03	1.03	1.03	.98	.98	.98	.96
1.0	1.02	.97	.93	.99	.95	.91	.94	.91	.88	.89	.87	.84	.85	.83	.81	.79
2.0	.88	.81	.75	.86	.80	.74	.82	.76	.72	.78	.73	.69	.74	.71	.67	.65
3.0	.77	.69	.62	.75	.68	.61	.72	.65	.60	.68	.63	.58	.65	.61	.57	.54
4.0	.68	.59	.52	.67	.58	.52	.64	.56	.51	.61	.55	.50	.58	.53	.48	.46
5.0	.61	.52	.45	.60	.51	.45	.57	.49	.44	.55	.48	.43	.52	.47	.42	.40
6.0	.55	.46	.39	.54	.45	.39	.51	.44	.38	.49	.43	.38	.47	.41	.37	.35
7.0	.50	.41	.35	.49	.40	.34	.47	.39	.34	.45	.38	.33	.43	.37	.33	.31
8.0	.45	.37	.31	.44	.36	.31	.43	.35	.30	.41	.35	.30	.40	.34	.29	.27
9.0	.42	.33	.28	.41	.33	.27	.39	.32	.27	.38	.31	.27	.37	.31	.26	.24
10.0	.38	.30	.25	.38	.30	.25	.36	.29	.25	.35	.29	.24	.34	.28	.24	.22



C Range: 0 - 360DEG
C Interval: 30.0DEG
Test Speed: HIGH
Temperature:25.3℃
Operators:
Test Date:2025-02-25

γ Range: 0 - 180DEG
γ Interval: 1.0DEG
Test System:EVERFINE GO-2000B_V1 SYSTEM V2.00.488
Humidity:65.0%
Test Distance:6.360m [K=1.0000]
Remarks:

WEC AND CCEC

Test:U:24.00V I:0.1426A P:3.423W PF:1.000 Freq:0Hz Lamp Flux:45.669x1 lm		
NAME: SF16-24V-5050-72-RGBW(2700K)-80-R	TYPE:	WEIGHT:
SPEC.:	DIM.: Length=1m	SERIAL No.:
MFR.: OLYMPIA lighting	SUR.:	Shielding Angle:

pcc	80%			70%			50%			30%			10%			0														
pw	50%	30%	10%	50%	30%	10%	50%	30%	10%	50%	30%	10%	50%	30%	10%	0														
pfc	20%			20%			20%			20%			20%			0														
RCR	RCR:Room Cavity Ratio															Wall Exitance Coefficients(WEC)														
0.0																														
1.0	.328	.187	.059	.320	.182	.058	.304	.174	.056	.289	.167	.054	.276	.160	.052															
2.0	.302	.165	.051	.294	.162	.050	.280	.156	.048	.267	.150	.047	.255	.144	.046															
3.0	.276	.147	.044	.270	.144	.043	.257	.139	.042	.246	.135	.041	.235	.130	.040															
4.0	.253	.132	.039	.247	.129	.038	.236	.125	.037	.226	.121	.037	.216	.117	.036															
5.0	.233	.119	.034	.228	.117	.034	.218	.113	.033	.209	.110	.033	.200	.107	.032															
6.0	.216	.108	.031	.211	.106	.031	.202	.103	.030	.193	.100	.030	.186	.098	.029															
7.0	.200	.099	.028	.196	.098	.028	.188	.095	.027	.180	.092	.027	.173	.090	.026															
8.0	.187	.091	.026	.183	.090	.025	.175	.088	.025	.169	.085	.025	.162	.083	.024															
9.0	.175	.084	.024	.171	.083	.023	.164	.081	.023	.158	.079	.023	.152	.077	.022															
10.0	.164	.079	.022	.161	.078	.022	.155	.076	.021	.149	.074	.021	.144	.072	.021															

pcc	80%			70%			50%			30%			10%			0
pw	50%	30%	10%	50%	30%	10%	50%	30%	10%	50%	30%	10%	50%	30%	10%	0
pfc	20%			20%			20%			20%			20%			0
RCR	RCR:Room Cavity Ratio						Ceiling Cavity Exitance Coefficients (CCEC)									
0.0	.223	.223	.223	.191	.191	.191	.130	.130	.130	.075	.075	.075	.024	.024	.024	
1.0	.214	.189	.166	.183	.162	.143	.125	.111	.099	.072	.064	.057	.023	.021	.019	
2.0	.207	.165	.130	.177	.142	.112	.121	.098	.078	.070	.057	.046	.022	.018	.015	
3.0	.199	.147	.107	.170	.127	.092	.117	.088	.065	.068	.052	.038	.022	.017	.013	
4.0	.191	.134	.091	.164	.116	.079	.113	.081	.056	.065	.047	.033	.021	.015	.011	
5.0	.184	.124	.080	.158	.107	.070	.109	.075	.049	.063	.044	.029	.020	.014	.010	
6.0	.176	.116	.072	.152	.100	.063	.105	.070	.045	.061	.041	.026	.020	.014	.009	
7.0	.169	.109	.067	.146	.094	.058	.101	.066	.041	.059	.039	.024	.019	.013	.008	
8.0	.163	.103	.062	.140	.090	.054	.097	.063	.038	.056	.037	.023	.018	.012	.008	
9.0	.157	.098	.059	.135	.085	.051	.094	.060	.036	.055	.035	.022	.018	.012	.007	
10.0	.151	.094	.056	.130	.082	.049	.090	.057	.035	.053	.034	.021	.017	.011	.007	

C Range: 0 - 360DEG
C Interval: 30.0DEG
Test Speed: HIGH
Temperature:25.3℃
Operators:
Test Date:2025-02-25

γ Range: 0 - 180DEG
γ Interval: 1.0DEG
Test System:EVERFINE GO-2000B_V1 SYSTEM V2.00.488
Humidity:65.0%
Test Distance:6.360m [K=1.0000]
Remarks:

UGR(Unified Glare Rating) Table

Test:U:24.00V I:0.1426A P:3.423W PF:1.000 Freq:0Hz Lamp Flux:45.669x1 lm											
NAME: SF16-24V-5050-72-RGBW(2700K)-80-R						TYPE:		WEIGHT:			
SPEC.:						DIM.: Length=1m		SERIAL No.:			
MFR.: OLympia lighting						SUR.:		Shielding Angle:			
ceiling/cavity	0.7	0.7	0.5	0.5	0.3	0.7	0.7	0.5	0.5	0.3	
walls	0.5	0.3	0.5	0.3	0.3	0.5	0.3	0.5	0.3	0.3	
working plane	0.2	0.2	0.2	0.2	0.2	0.2	0.2	0.2	0.2	0.2	
Room dimensions		Viewed crosswise					Viewed endwise				
x = 2H y = 2H	2H	22.2	23.7	22.6	24.0	24.3	22.6	24.1	22.9	24.4	24.7
	3H	23.8	25.2	24.2	25.5	25.8	24.3	25.7	24.7	26.0	26.3
	4H	24.5	25.8	24.8	26.1	26.4	25.1	26.4	25.5	26.7	27.1
	6H	25.0	26.2	25.4	26.5	26.9	25.7	27.0	26.1	27.3	27.7
	8H	25.1	26.3	25.5	26.7	27.1	26.0	27.2	26.4	27.6	27.9
	12H	25.3	26.4	25.7	26.8	27.2	26.2	27.4	26.6	27.7	28.1
4H	2H	22.9	24.2	23.3	24.5	24.9	23.2	24.5	23.6	24.8	25.2
	3H	24.6	25.8	25.1	26.2	26.6	25.1	26.2	25.5	26.6	27.0
	4H	25.4	26.5	25.9	26.9	27.3	26.0	27.0	26.4	27.4	27.9
	6H	26.1	27.0	26.5	27.4	27.9	26.8	27.7	27.3	28.2	28.6
	8H	26.3	27.2	26.8	27.6	28.1	27.1	28.0	27.6	28.5	28.9
	12H	26.5	27.3	27.0	27.7	28.2	27.4	28.2	27.9	28.7	29.2
8H	4H	25.8	26.6	26.3	27.1	27.6	26.3	27.1	26.7	27.6	28.1
	6H	26.6	27.3	27.1	27.8	28.3	27.2	28.0	27.8	28.4	29.0
	8H	26.9	27.5	27.4	28.0	28.6	27.7	28.3	28.2	28.8	29.4
	12H	27.2	27.7	27.7	28.3	28.8	28.1	28.6	28.6	29.2	29.7
12H	4H	25.8	26.6	26.3	27.1	27.6	26.3	27.1	26.8	27.5	28.0
	6H	26.7	27.3	27.2	27.8	28.4	27.3	28.0	27.8	28.5	29.0
	8H	27.0	27.6	27.6	28.1	28.7	27.8	28.4	28.3	28.9	29.5
Variations with the observer position at spacings(CIE Pub.117):											
S = 1.0H		+ 0.1 / - 0.2					+ 0.1 / - 0.2				
1.5H		+ 0.2 / - 0.3					+ 0.1 / - 0.3				
2.0H		+ 0.1 / - 0.3					+ 0.1 / - 0.2				

CIE Pub.117, 45.67 lm Total Lamp Luminous Flux Correct (8log(F/F0) = -10.7)
Area: 0.016 m2

C Range: 0 - 360DEG
C Interval: 30.0DEG
Test Speed: HIGH
Temperature:25.3℃
Operators:
Test Date:2025-02-25

γ Range: 0 - 180DEG
γ Interval: 1.0DEG
Test System:EVERFINE GO-2000B_V1 SYSTEM V2.00.488
Humidity:65.0%
Test Distance:6.360m [K=1.0000]
Remarks:

UTILIZATION FACTORS TABLE

Test:U:24.00V I:0.1426A P:3.423W PF:1.000 Freq:0Hz Lamp Flux:45.669x1 lm		
NAME: SF16-24V-5050-72-RGBW(2700K)-80-R	TYPE:	WEIGHT:
SPEC.:	DIM.: Length=1m	SERIAL No.:
MFR.: OLympia lighting	SUR.:	Shielding Angle:

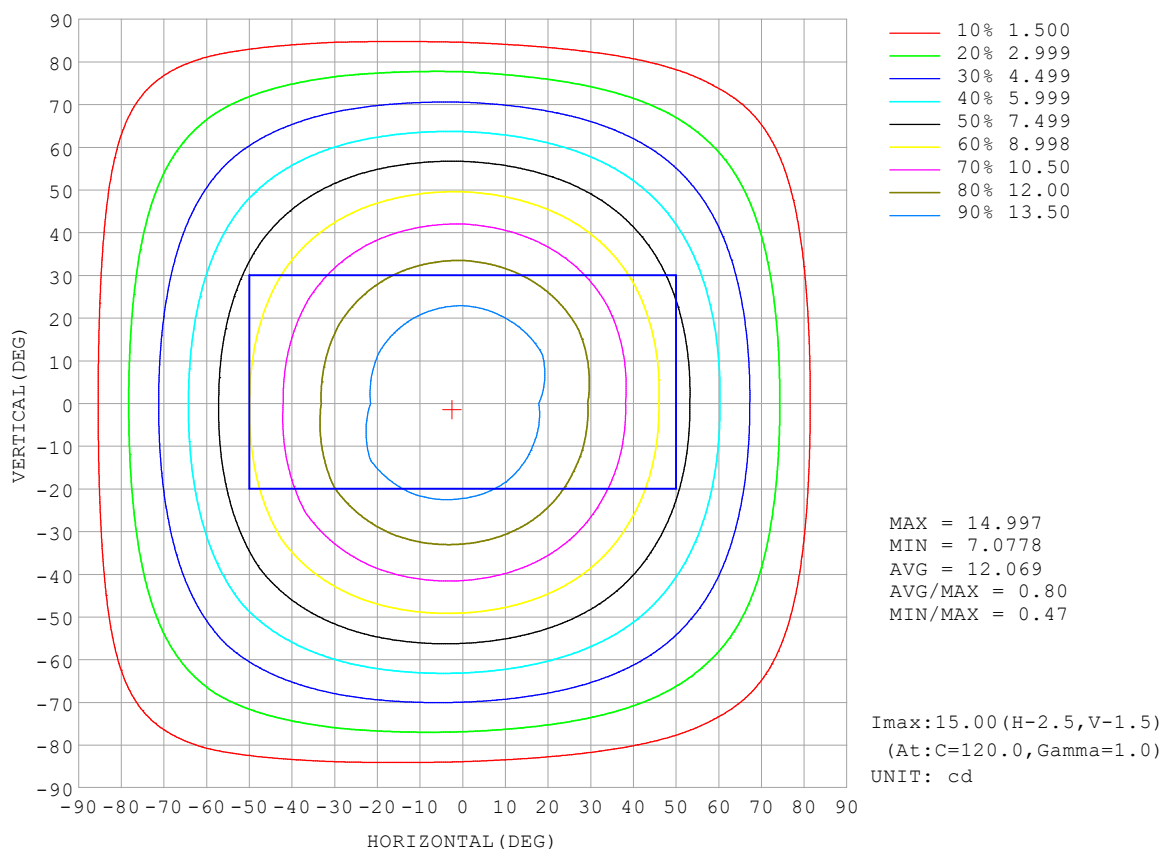
REFLECTANCE										
Ceiling	0.8	0.8	0.8	0.7	0.7	0.7	0.5	0.5	0.5	0
Walls	0.7	0.5	0.3	0.7	0.5	0.3	0.7	0.5	0.3	0
Working plane	0.2	0.2	0.2	0.2	0.2	0.2	0.2	0.2	0.2	0
ROOM INDEX	UTILIZATION FACTORS (PERCENT) $k(RI) \times RCR = 5$									
$k = 0.60$	55	44	37	55	43	36	53	43	36	30
0.80	65	53	46	64	53	46	62	52	45	38
1.00	73	62	54	72	61	54	69	62	53	46
1.25	80	70	62	79	69	62	76	67	60	52
1.50	85	75	68	84	74	67	80	72	66	57
2.00	92	83	76	90	82	76	86	79	74	65
2.50	96	88	82	94	87	81	90	83	78	69
3.00	100	93	87	97	91	85	93	87	83	73
4.00	104	98	93	101	96	91	96	92	88	78
5.00	107	101	97	104	99	95	99	95	91	81
ROOM INDEX	UF (total)									Direct
According to DIN EN 13032-2 2004			Suspended					SHRNOM = 1.25		

C Range: 0 - 360DEG
 C Interval: 30.0DEG
 Test Speed: HIGH
 Temperature: 25.3 °C
 Operators:
 Test Date: 2025-02-25

γ Range: 0 - 180DEG
 γ Interval: 1.0DEG
 Test System: EVERFINE GO-2000B_V1 SYSTEM V2.00.488
 Humidity: 65.0%
 Test Distance: 6.360m [K=1.0000]
 Remarks:

ISOCANDELA DIAGRAM

Test:U:24.00V I:0.1426A P:3.423W PF:1.000 Freq:0Hz Lamp Flux:45.669x1 lm		
NAME: SF16-24V-5050-72-RGBW(2700K)-80-R	TYPE:	WEIGHT:
SPEC.:	DIM.: Length=1m	SERIAL No.:
MFR.: OLympia lighting	SUR.:	Shielding Angle:

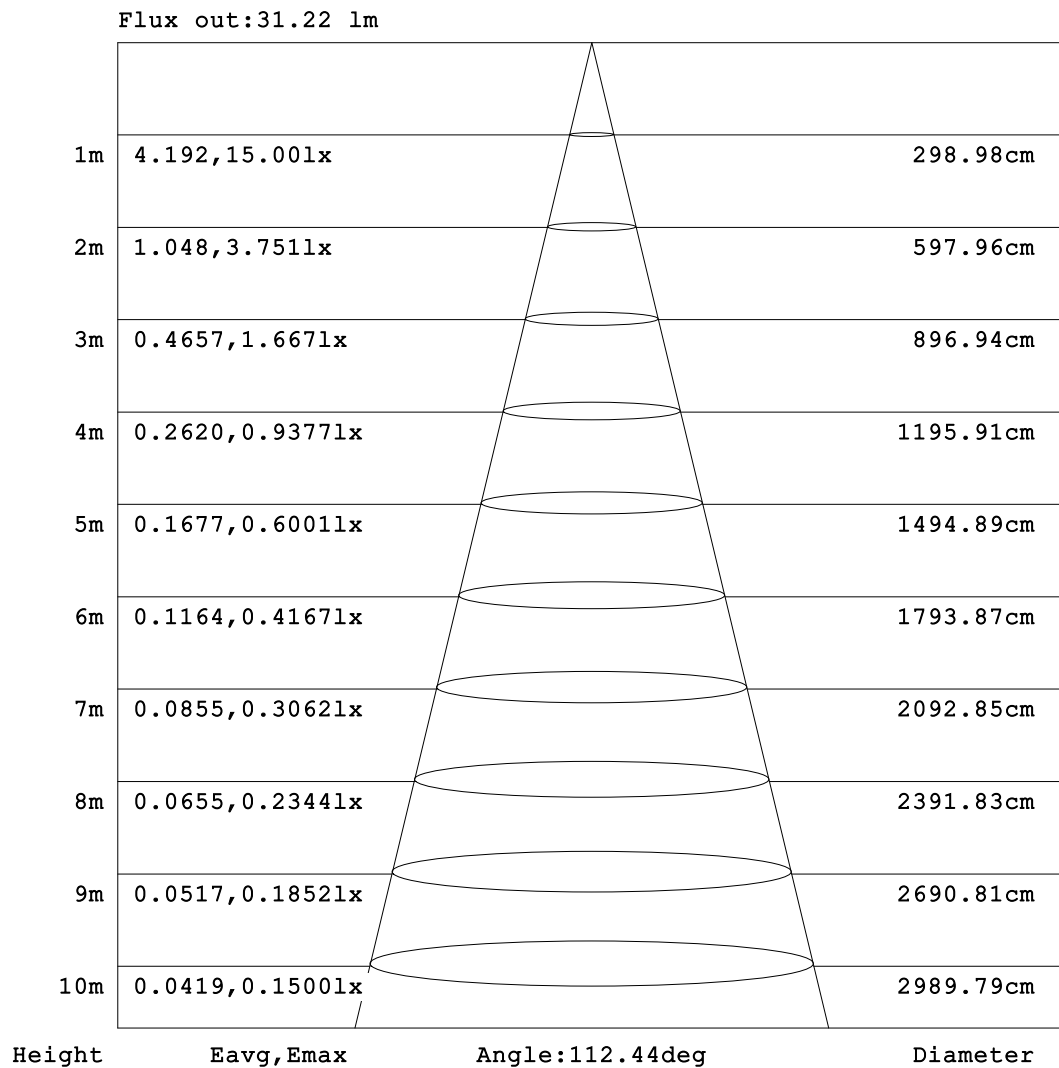


C Range: 0 - 360DEG
C Interval: 30.0DEG
Test Speed: HIGH
Temperature:25.3℃
Operators:
Test Date:2025-02-25

γ Range: 0 - 180DEG
γ Interval: 1.0DEG
Test System:EVERFINE GO-2000B_V1 SYSTEM V2.00.488
Humidity:65.0%
Test Distance:6.360m [K=1.0000]
Remarks:

AAI Figure

Test:U:24.00V I:0.1426A P:3.423W PF:1.000 Freq:0Hz Lamp Flux:45.669x1 lm		
NAME: SF16-24V-5050-72-RGBW(2700K)-80-R	TYPE:	WEIGHT:
SPEC.:	DIM.: Length=1m	SERIAL No.:
MFR.: OLympia lighting	SUR.:	Shielding Angle:



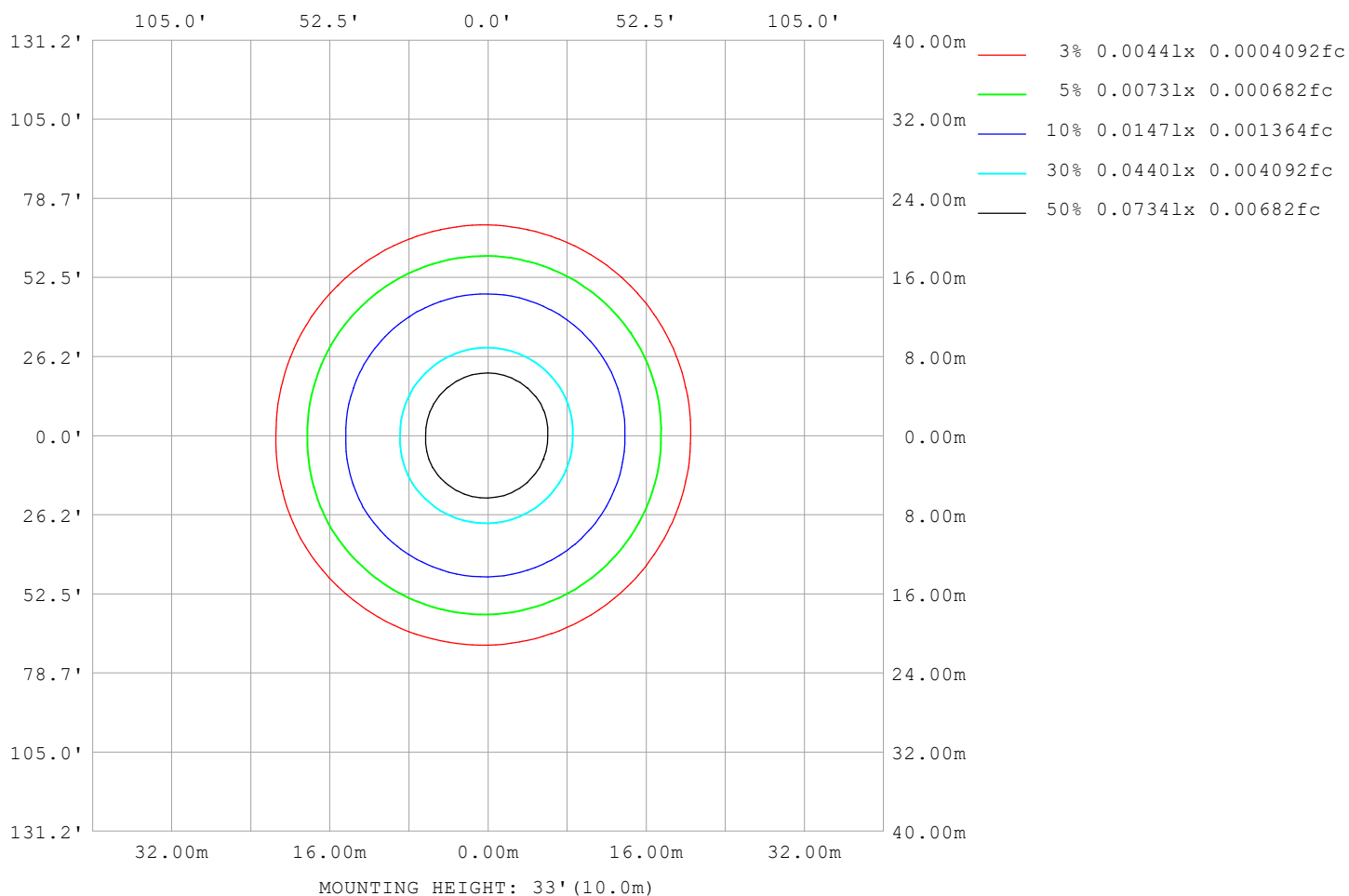
Note:The Curves indicate the illuminated area and the average illumination when the luminaire is at different distance.

C Range: 0 - 360DEG
C Interval: 30.0DEG
Test Speed: HIGH
Temperature:25.3℃
Operators:
Test Date:2025-02-25

γ Range: 0 - 180DEG
γ Interval: 1.0DEG
Test System:EVERFINE GO-2000B_V1 SYSTEM V2.00.488
Humidity:65.0%
Test Distance:6.360m [K=1.0000]
Remarks:

ISOLUX DIAGRAM

Test:U:24.00V I:0.1426A P:3.423W PF:1.000 Freq:0Hz Lamp Flux:45.669x1 lm		
NAME: SF16-24V-5050-72-RGBW(2700K)-80-R	TYPE:	WEIGHT:
SPEC.:	DIM.: Length=1m	SERIAL No.:
MFR.: OLympia lighting	SUR.:	Shielding Angle:



C Range: 0 - 360DEG
C Interval: 30.0DEG
Test Speed: HIGH
Temperature: 25.3°C
Operators:
Test Date: 2025-02-25

γ Range: 0 - 180DEG
γ Interval: 1.0DEG
Test System: EVERFINE GO-2000B_V1 SYSTEM V2.00.488
Humidity: 65.0%
Test Distance: 6.360m [K=1.0000]
Remarks:

LED Avg.L Report

Test:U:24.00V I:0.1426A P:3.423W PF:1.000 Freq:0Hz Lamp Flux:45.669x1 lm		
NAME: SF16-24V-5050-72-RGBW(2700K)-80-R	TYPE:	WEIGHT:
SPEC.:	DIM.: Length=1m	SERIAL No.:
MFR.: OLympia lighting	SUR.:	Shielding Angle:

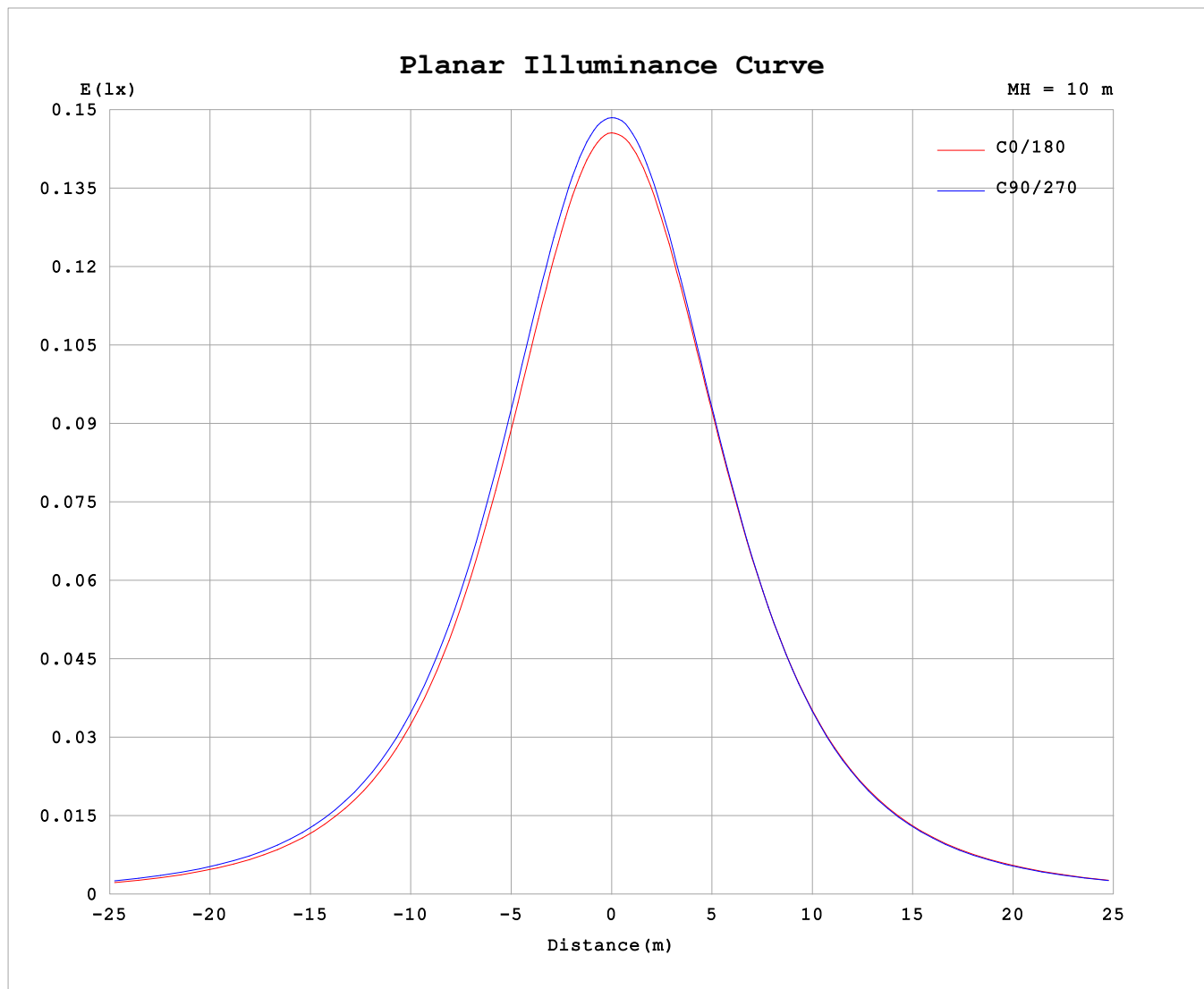
AvgL	cd/m2
L_0~180 (65) av	813
L_0~180 (75) av	803
L_0~180 (85) av	904
L_90~270 (65) av	832
L_90~270 (75) av	837
L_90~270 (85) av	950
L_45 (65) av	824
L_45 (75) av	821
L_45 (85) av	914

Standard: GB/T 29293-2012

C Range: 0 - 360DEG
C Interval: 30.0DEG
Test Speed: HIGH
Temperature:25.3℃
Operators:
Test Date:2025-02-25

γ Range: 0 - 180DEG
γ Interval: 1.0DEG
Test System:EVERFINE GO-2000B_V1 SYSTEM V2.00.488
Humidity:65.0%
Test Distance:6.360m [K=1.0000]
Remarks:

Planar Illuminance Curve



C Range: 0 - 360DEG
C Interval: 30.0DEG
Test Speed: HIGH
Temperature: 25.3 °C
Operators:
Test Date: 2025-02-25

γ Range: 0 - 180DEG
 γ Interval: 1.0DEG
Test System: EVERFINE GO-2000B_V1 SYSTEM V2.00.488
Humidity: 65.0%
Test Distance: 6.360m [K=1.0000]
Remarks:

LUMINOUS DISTRIBUTION INTENSITY DATA

Test:U:24.00V I:0.1426A P:3.423W PF:1.000 Freq:0Hz Lamp Flux:45.669x1 lm																	
NAME: SF16-24V-5050-72-RGBW(2700K)-80-R									TYPE:						WEIGHT:		
SPEC.:									DIM.: Length=1m						SERIAL No.:		
MFR.: OLYMPIA lighting									SUR.:						Shielding Angle:		

Table--1

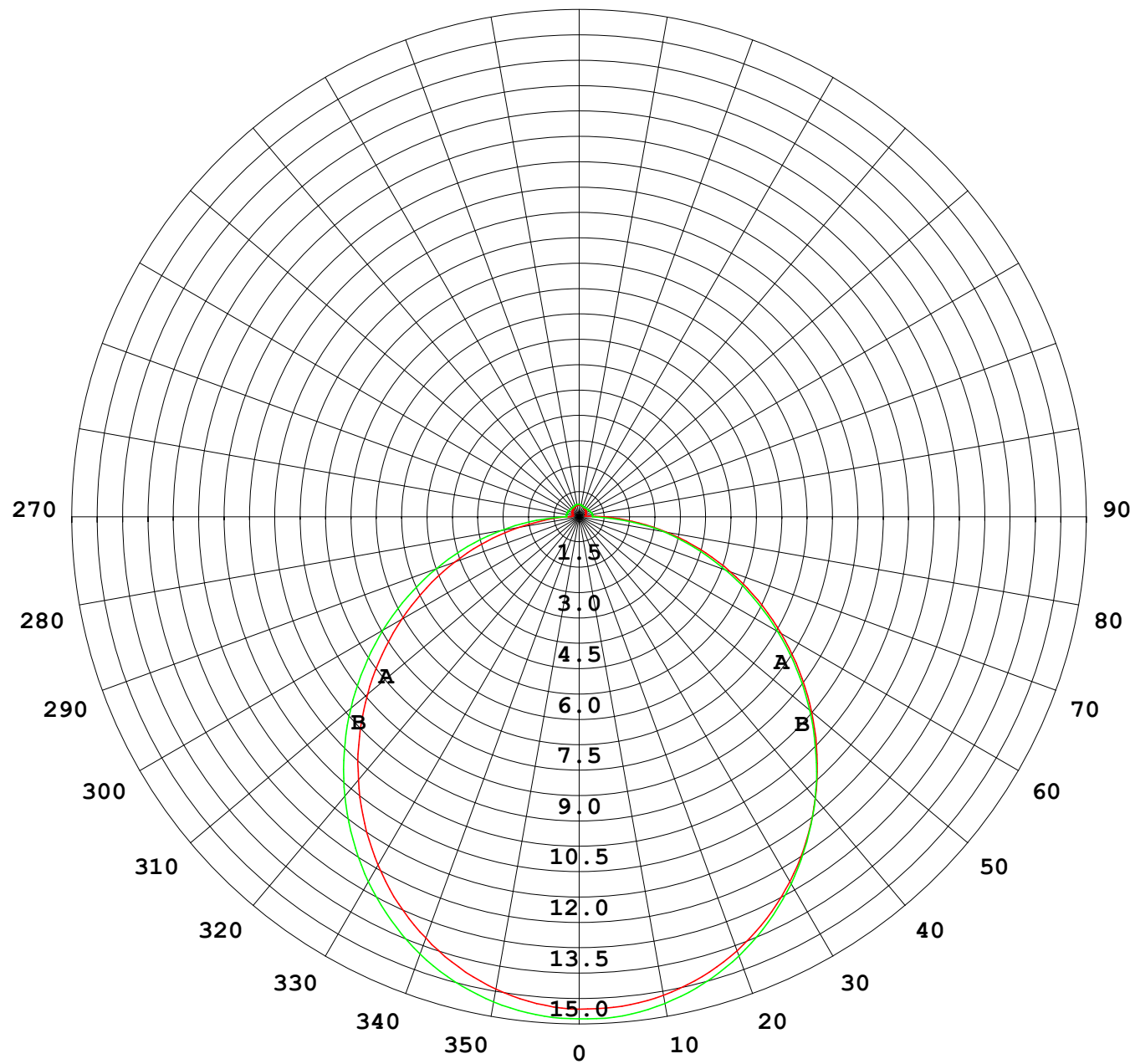
UNIT: cd

C (DEG) γ (DEG)	0	30	60	90	120	150	180	210	240	270	300	330						
0	14.8	14.8	14.8	14.8	14.8	14.8	14.8	14.8	14.8	14.8	14.8	14.8						
5	14.7	14.7	14.7	14.7	14.8	14.8	14.8	14.8	14.8	14.8	14.8	14.7						
10	14.4	14.4	14.5	14.5	14.6	14.6	14.6	14.6	14.6	14.6	14.6	14.5						
15	14.0	14.0	14.1	14.2	14.3	14.3	14.3	14.3	14.3	14.2	14.1	14.0						
20	13.5	13.5	13.6	13.7	13.8	13.9	13.9	13.9	13.8	13.8	13.6	13.5						
25	12.8	12.9	13.0	13.1	13.3	13.3	13.3	13.3	13.3	13.2	13.0	12.9						
30	12.1	12.1	12.3	12.4	12.6	12.7	12.7	12.7	12.6	12.5	12.3	12.1						
35	11.2	11.3	11.5	11.6	11.8	11.9	11.9	11.9	11.8	11.7	11.5	11.3						
40	10.3	10.4	10.6	10.7	10.9	11.1	11.0	11.1	11.0	10.8	10.6	10.4						
45	9.34	9.42	9.61	9.79	9.98	10.1	10.11	10.1	10.0	9.87	9.65	9.39						
50	8.30	8.38	8.59	8.78	8.98	9.13	9.12	9.14	9.04	8.87	8.63	8.36						
55	7.24	7.32	7.54	7.73	7.94	8.08	8.08	8.11	8.01	7.83	7.58	7.30						
60	6.16	6.23	6.46	6.67	6.86	7.00	7.01	7.04	6.94	6.76	6.51	6.23						
65	5.07	5.14	5.37	5.57	5.77	5.91	5.93	5.95	5.86	5.68	5.43	5.13						
70	3.97	4.05	4.29	4.48	4.68	4.81	4.83	4.87	4.78	4.59	4.34	4.05						
75	2.89	2.97	3.20	3.41	3.59	3.72	3.75	3.78	3.69	3.52	3.27	2.98						
80	1.82	1.89	2.12	2.33	2.51	2.63	2.66	2.69	2.67	2.53	2.20	1.90						
85	0.92	0.91	1.06	1.26	1.43	1.56	1.60	1.62	1.56	1.39	1.13	0.93						
90	0.39	0.36	0.41	0.39	0.55	0.68	0.74	0.75	0.59	0.41	0.41	0.40						
95	0.22	0.22	0.33	0.38	0.34	0.22	0.22	0.28	0.34	0.40	0.35	0.26						
100	0.21	0.22	0.33	0.38	0.34	0.22	0.19	0.25	0.33	0.40	0.34	0.26						
105	0.21	0.23	0.33	0.38	0.34	0.23	0.19	0.25	0.32	0.40	0.33	0.26						
110	0.22	0.24	0.33	0.37	0.34	0.24	0.20	0.25	0.31	0.38	0.32	0.26						
115	0.23	0.26	0.33	0.37	0.34	0.25	0.22	0.25	0.31	0.37	0.32	0.26						
120	0.24	0.27	0.33	0.36	0.34	0.26	0.23	0.25	0.31	0.35	0.32	0.26						
125	0.26	0.28	0.33	0.35	0.34	0.27	0.24	0.25	0.31	0.35	0.32	0.26						
130	0.27	0.29	0.33	0.34	0.33	0.28	0.25	0.26	0.31	0.33	0.32	0.27						
135	0.28	0.30	0.33	0.34	0.33	0.30	0.27	0.27	0.31	0.33	0.32	0.28						
140	0.30	0.31	0.33	0.34	0.32	0.31	0.29	0.27	0.32	0.32	0.32	0.29						
145	0.30	0.32	0.33	0.34	0.32	0.33	0.29	0.29	0.32	0.32	0.32	0.30						
150	0.31	0.33	0.33	0.35	0.32	0.33	0.31	0.30	0.33	0.32	0.33	0.30						
155	0.33	0.34	0.33	0.35	0.33	0.35	0.33	0.31	0.35	0.32	0.34	0.32						
160	0.33	0.36	0.34	0.36	0.34	0.36	0.34	0.33	0.35	0.33	0.35	0.33						
165	0.34	0.36	0.35	0.37	0.35	0.37	0.35	0.34	0.36	0.34	0.36	0.34						
170	0.35	0.37	0.36	0.37	0.36	0.37	0.36	0.35	0.37	0.36	0.37	0.35						
175	0.36	0.37	0.36	0.37	0.37	0.38	0.36	0.36	0.37	0.36	0.37	0.36						
180	0.37	0.37	0.37	0.37	0.37	0.37	0.36	0.36	0.37	0.37	0.37	0.37						

C Range: 0 - 360DEG
C Interval: 30.0DEG
Test Speed: HIGH
Temperature:25.3℃
Operators:
Test Date:2025-02-25

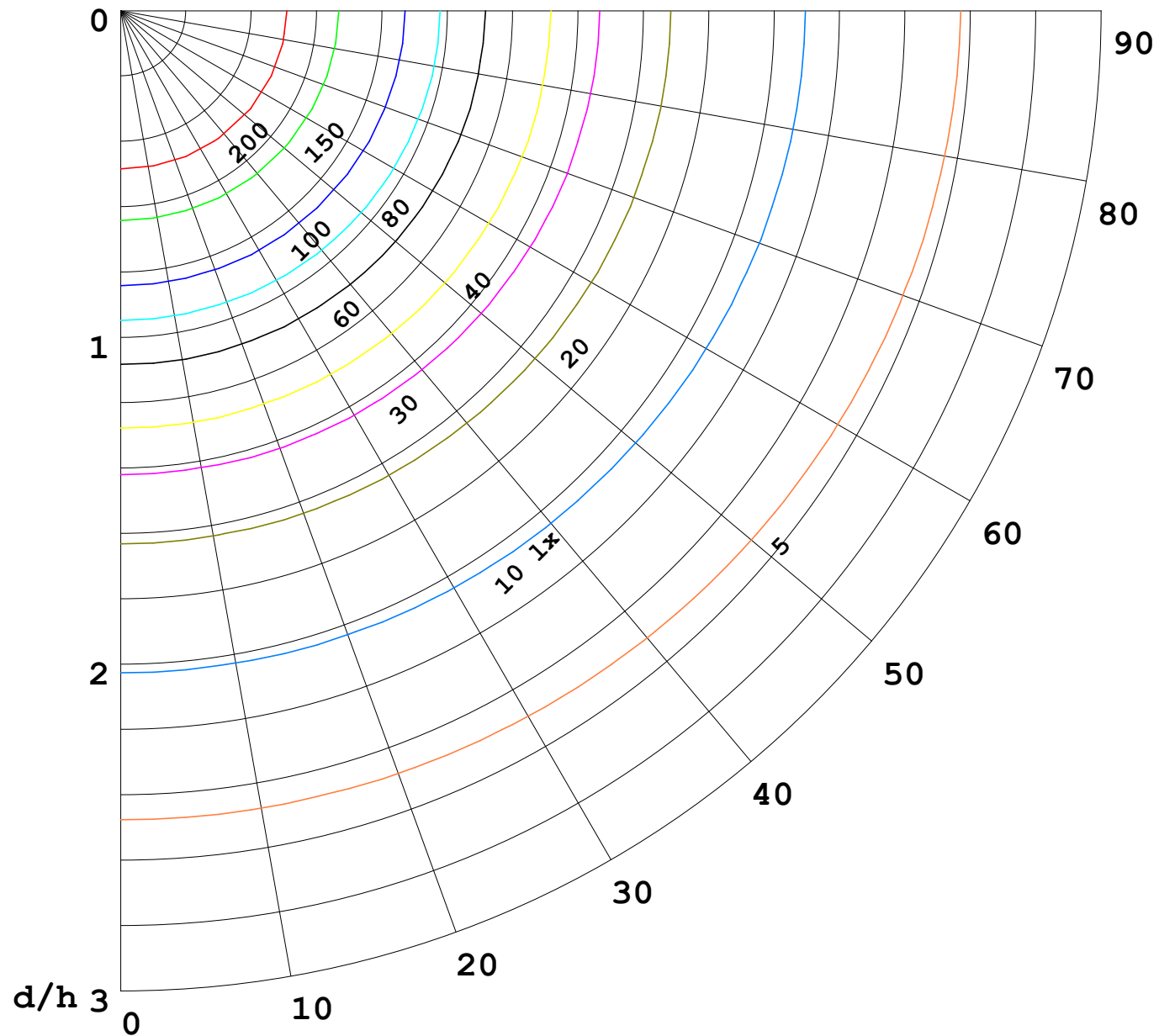
γ Range: 0 - 180DEG
γ Interval: 1.0DEG
Test System:EVERFINE GO-2000B_V1 SYSTEM V2.00.488
Humidity:65.0%
Test Distance:6.360m [K=1.0000]
Remarks:

I (cd)



1000 lm

$\kappa = 1$



F = 1000 lm
 K = 0.7
 Hcc = 0.8 m
 Hfc = 0.0 m
 Eave = 100 lx

	Pcc	Pw	Pfc
—————	70	50	30
—————	50	30	20

