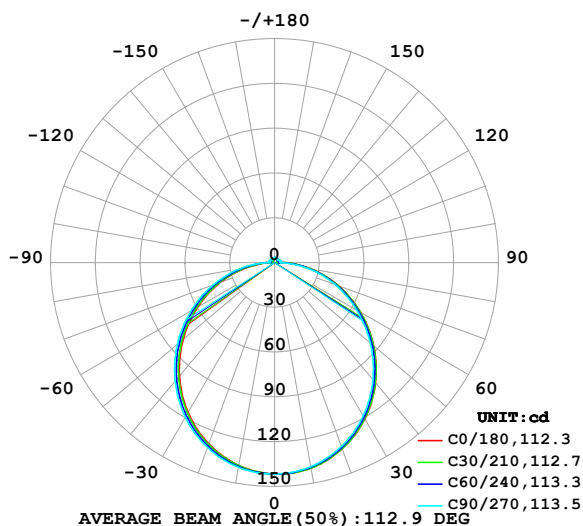


LUMINAIRE PHOTOMETRIC TEST REPORT

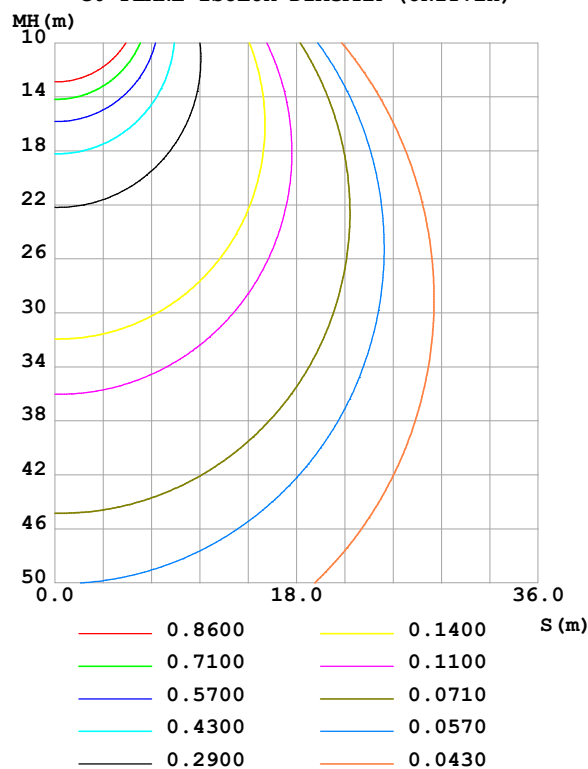
Test:U:24.00V I:0.7130A P:17.11W PF:1.000 Freq:0Hz Lamp Flux:435.482x1 lm		
NAME: SF16-24V-5050-72-RGBW(5000K)-80-ALL	TYPE:	WEIGHT:
SPEC.:	DIM.: Length=1m	SERIAL No.:
MFR.: OLympia lighting	SUR.:	Shielding Angle:

DATA OF LAMP		PHOTOMETRIC DATA Eff: 25.45 lm/W			
MODEL	5050	Imax (cd)	141.7	S/MH(C0/180)	1.22
NOMINAL POWER(W)	17	LOR(%)	100.0	S/MH(C90/270)	1.26
RATED VOLTAGE(V)	24	TOTAL FLUX(lm)	435.48	η UP,DN(C0-180)	2.0,48.4
NOMINAL FLUX(lm)	435.482	CIE CLASS	DIRECT	η UP,DN(C180-360)	2.1,47.5
LAMPS INSIDE	1	η up (%)	4.1	CIBSE SHR NOM	1.25
TEST VOLTAGE(V)		η down (%)	95.9	CIBSE SHR MAX	1.35

LUMINOUS INTENSITY DISTRIBUTION DIAGRAM



C0 PLANE ISOLUX DIAGRAM (UNIT:lx)



C Range: 0 - 360DEG
C Interval: 30.0DEG
Test Speed: HIGH
Temperature:25.3℃
Operators:
Test Date:2025-02-25

γ Range: 0 - 180DEG
 γ Interval: 1.0DEG
Test System:EVERFINE GO-2000B_V1 SYSTEM V2.00.488
Humidity:65.0%
Test Distance:6.360m [K=1.0000]
Remarks:

ZONAL FLUX DIAGRAM

ZONAL FLUX DIAGRAM:

γ	C0	C45	C90	C135	C180	C225	C270	C315	γ	Φ zone	Φ total	%lum, lamp
10	139.8	139.5	138.9	138.6	138.0	138.5	139.3	139.4	0- 10	13.39	13.39	3.08,3.08
20	132.7	132.2	131.0	130.5	129.2	130.3	131.8	132.0	10- 20	38.30	51.69	11.9,11.9
30	120.9	120.3	118.6	118.0	116.0	117.5	119.7	119.9	20- 30	57.86	109.6	25.2,25.2
40	105.2	104.4	102.5	101.6	99.18	101.1	103.7	104.0	30- 40	69.57	179.1	41.1,41.1
50	86.64	85.82	83.77	82.66	79.93	82.08	85.01	85.28	40- 50	72.21	251.3	57.7,57.7
60	66.37	65.54	63.58	62.21	59.39	61.62	64.66	64.95	50- 60	66.04	317.4	72.9,72.9
70	45.46	44.69	43.20	41.35	38.54	40.71	43.70	44.00	60- 70	52.60	370.0	85,85
80	24.68	24.00	22.94	20.78	17.97	20.16	23.46	23.30	70- 80	34.17	404.1	92.8,92.8
90	6.689	5.494	3.884	4.068	3.489	3.921	3.741	5.215	80- 90	13.57	417.7	95.9,95.9
100	1.798	2.424	4.017	2.436	1.644	2.790	3.722	2.795	90-100	3.273	421.0	96.7,96.7
110	1.961	2.460	3.820	2.564	1.870	2.827	3.702	2.728	100-110	2.857	423.8	97.3,97.3
120	2.205	2.503	3.369	2.619	2.088	2.785	3.422	2.702	110-120	2.675	426.5	97.9,97.9
130	2.445	2.578	2.993	2.671	2.343	2.793	3.266	2.715	120-130	2.421	428.9	98.5,98.5
140	2.671	2.702	2.852	2.792	2.586	2.839	3.141	2.768	130-140	2.124	431.1	99,99
150	2.892	2.911	2.997	3.013	2.844	2.947	3.075	2.876	140-150	1.794	432.8	99.4,99.4
160	3.115	3.134	3.216	3.222	3.093	3.111	3.098	3.058	150-160	1.401	434.2	99.7,99.7
170	3.307	3.321	3.387	3.375	3.313	3.310	3.303	3.286	160-170	0.9131	435.2	99.9,99.9
180	3.405	3.419	3.448	3.434	3.416	3.416	3.439	3.433	170-180	0.3216	435.5	100,100
DEG	LUMINOUS INTENSITY:cd									UNIT:lm		

Conical surface Flux(90deg): 215.47 lm

%lum = 49.5%

%lamp = 49.5%

Conical surface Flux(130deg): 345.72 lm

%lum = 79.4%

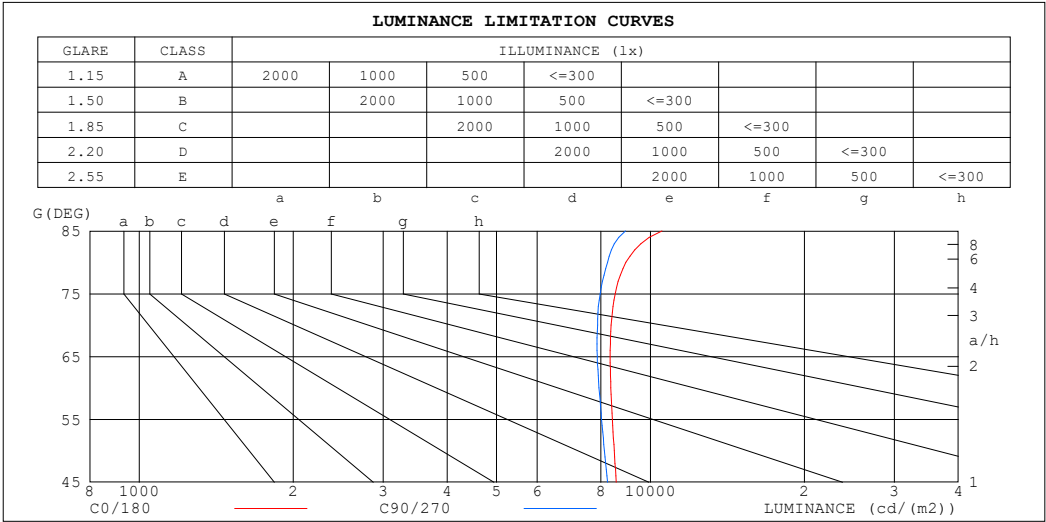
%lamp = 79.4%

C Range: 0 - 360DEG
 C Interval: 30.0DEG
 Test Speed: HIGH
 Temperature:25.3℃
 Operators:
 Test Date:2025-02-25

γ Range: 0 - 180DEG
 γ Interval: 1.0DEG
 Test System:EVERFINE GO-2000B_V1 SYSTEM V2.00.488
 Humidity:65.0%
 Test Distance:6.360m [K=1.0000]
 Remarks:

LUMINANCE LIMITATION CURVES

Test:U:24.00V I:0.7130A P:17.11W PF:1.000 Freq:0Hz Lamp Flux:435.482x1 lm		
NAME: SF16-24V-5050-72-RGBW(5000K)-80-ALL	TYPE:	WEIGHT:
SPEC.:	DIM.: Length=1m	SERIAL No.:
MFR.: OLympia lighting	SUR.:	Shielding Angle:



LUMINANCE cd/(m2)		
G (DEG)	C0/180	C90/270
85	10527	8930
80	8953	8241
75	8529	7970
70	8374	7877
65	8341	7865
60	8362	7930
55	8419	8020
50	8492	8128
45	8571	8236

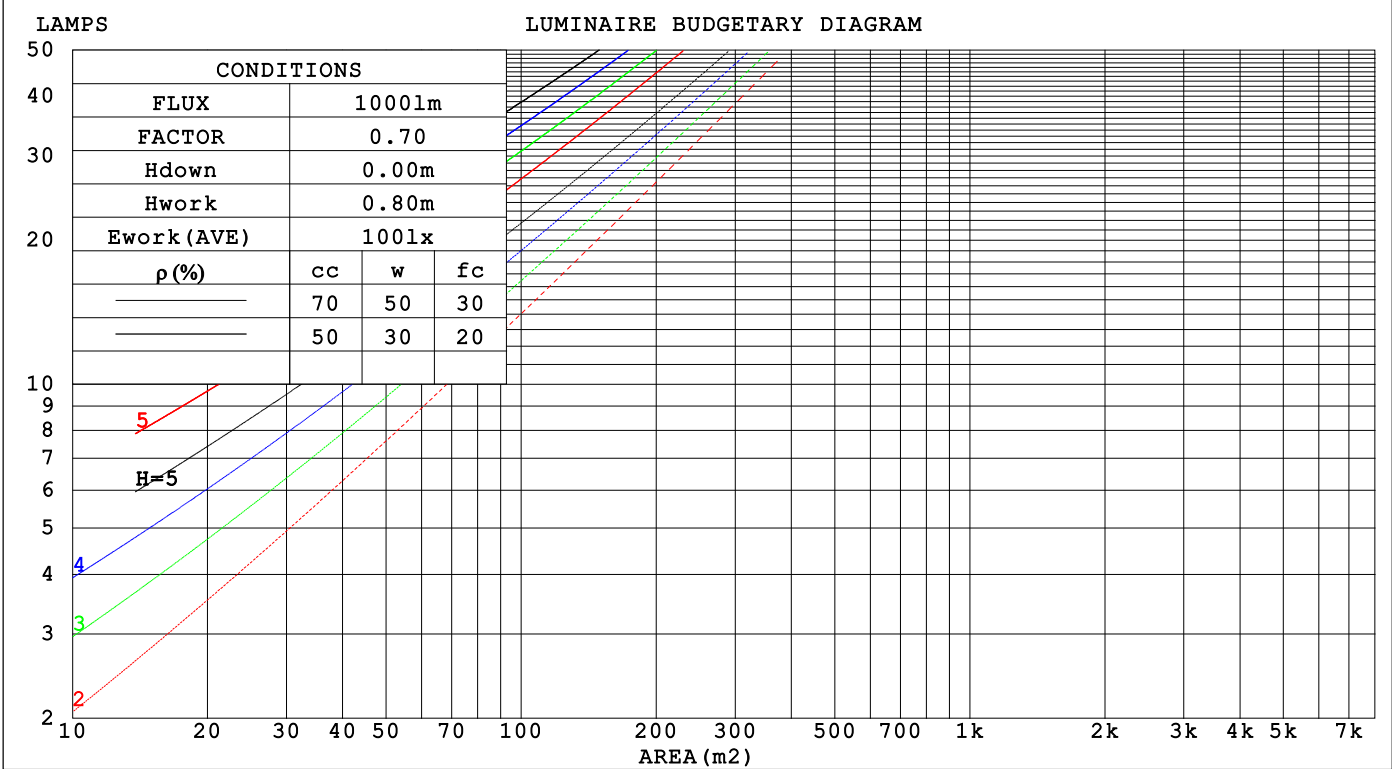
C Range: 0 - 360DEG
C Interval: 30.0DEG
Test Speed: HIGH
Temperature:25.3℃
Operators:
Test Date:2025-02-25

γ Range: 0 - 180DEG
γ Interval: 1.0DEG
Test System:EVERFINE GO-2000B_V1 SYSTEM V2.00.488
Humidity:65.0%
Test Distance:6.360m [K=1.0000]
Remarks:

CU AND LUMINAIRE BUDGETARY ESTIMATE DIAGRAM

Test:U:24.00V I:0.7130A P:17.11W PF:1.000 Freq:0Hz		
Lamp Flux:435.482x1 lm		
NAME: SF16-24V-5050-72-RGBW(5000K)-80-ALL	TYPE:	WEIGHT:
SPEC.:	DIM.: Length=1m	SERIAL No.:
MFR.: OLYMPIA lighting	SUR.:	Shielding Angle:

pcc	80%			70%			50%			30%			10%			0
pw	50%	30%	10%	50%	30%	10%	50%	30%	10%	50%	30%	10%	50%	30%	10%	0
pfc	20%			20%			20%			20%			20%			0
RCR	RCR:Room Cavity Ratio			Coefficients of Utilization(CU)												
0.0	1.18	1.18	1.18	1.15	1.15	1.15	1.09	1.09	1.09	1.03	1.03	1.03	.98	.98	.98	.96
1.0	1.02	.97	.93	.99	.95	.91	.94	.91	.88	.90	.87	.84	.85	.83	.81	.79
2.0	.88	.81	.75	.86	.80	.74	.82	.76	.72	.78	.73	.70	.74	.71	.67	.65
3.0	.77	.69	.62	.75	.68	.61	.72	.65	.60	.69	.63	.58	.65	.61	.57	.54
4.0	.68	.59	.53	.67	.58	.52	.64	.57	.51	.61	.55	.50	.58	.53	.49	.46
5.0	.61	.52	.45	.60	.51	.45	.57	.50	.44	.55	.48	.43	.52	.47	.42	.40
6.0	.55	.46	.39	.54	.45	.39	.51	.44	.38	.49	.43	.38	.47	.42	.37	.35
7.0	.50	.41	.35	.49	.40	.34	.47	.39	.34	.45	.38	.33	.43	.37	.33	.31
8.0	.45	.37	.31	.44	.36	.31	.43	.35	.30	.41	.35	.30	.40	.34	.29	.27
9.0	.42	.33	.28	.41	.33	.28	.39	.32	.27	.38	.31	.27	.37	.31	.26	.25
10.0	.38	.30	.25	.38	.30	.25	.36	.29	.25	.35	.29	.24	.34	.28	.24	.22



C Range: 0 - 360DEG
C Interval: 30.0DEG
Test Speed: HIGH
Temperature:25.3℃
Operators:
Test Date:2025-02-25

γ Range: 0 - 180DEG
γ Interval: 1.0DEG
Test System:EVERFINE GO-2000B_V1 SYSTEM V2.00.488
Humidity:65.0%
Test Distance:6.360m [K=1.0000]
Remarks:

WEC AND CCEC

Test:U:24.00V I:0.7130A P:17.11W PF:1.000 Freq:0Hz Lamp Flux:435.482x1 lm		
NAME: SF16-24V-5050-72-RGBW(5000K)-80-ALL	TYPE:	WEIGHT:
SPEC.:	DIM.: Length=1m	SERIAL No.:
MFR.: OLYMPIA lighting	SUR.:	Shielding Angle:

pcc	80%			70%			50%			30%			10%			0														
pw	50%	30%	10%	50%	30%	10%	50%	30%	10%	50%	30%	10%	50%	30%	10%	0														
pfc	20%			20%			20%			20%			20%			0														
RCR	RCR:Room Cavity Ratio															Wall Exitance Coefficients(WEC)														
0.0																														
1.0	.327	.186	.059	.319	.182	.058	.303	.174	.056	.289	.167	.053	.276	.160	.052															
2.0	.302	.165	.051	.294	.162	.050	.280	.156	.048	.267	.150	.047	.255	.145	.046															
3.0	.276	.147	.044	.270	.144	.043	.257	.139	.042	.246	.135	.041	.235	.130	.040															
4.0	.253	.132	.039	.247	.129	.038	.236	.125	.037	.226	.121	.037	.216	.118	.036															
5.0	.233	.119	.034	.228	.117	.034	.218	.113	.033	.209	.110	.033	.200	.107	.032															
6.0	.215	.108	.031	.211	.106	.031	.202	.103	.030	.194	.101	.030	.186	.098	.029															
7.0	.200	.099	.028	.196	.098	.028	.188	.095	.027	.180	.092	.027	.173	.090	.026															
8.0	.187	.091	.026	.183	.090	.025	.175	.088	.025	.169	.085	.025	.162	.083	.024															
9.0	.175	.084	.024	.171	.083	.023	.165	.081	.023	.158	.079	.023	.152	.077	.022															
10.0	.164	.079	.022	.161	.078	.022	.155	.076	.021	.149	.074	.021	.144	.072	.021															

pcc	80%			70%			50%			30%			10%			0
pw	50%	30%	10%	50%	30%	10%	50%	30%	10%	50%	30%	10%	50%	30%	10%	0
pfc	20%			20%			20%			20%			20%			0
RCR	RCR:Room Cavity Ratio						Ceiling Cavity Exitance Coefficients (CCEC)									
0.0	.222	.222	.222	.189	.189	.189	.129	.129	.129	.074	.074	.074	.024	.024	.024	
1.0	.213	.187	.164	.182	.161	.141	.125	.111	.098	.072	.064	.057	.023	.021	.018	
2.0	.205	.163	.128	.176	.141	.111	.120	.097	.077	.069	.057	.045	.022	.018	.015	
3.0	.197	.146	.105	.169	.126	.091	.116	.088	.064	.067	.051	.038	.022	.017	.012	
4.0	.190	.133	.090	.163	.115	.078	.112	.080	.055	.065	.047	.032	.021	.015	.011	
5.0	.182	.123	.079	.156	.106	.069	.108	.074	.048	.062	.044	.029	.020	.014	.009	
6.0	.175	.114	.071	.150	.099	.062	.104	.069	.044	.060	.041	.026	.019	.013	.009	
7.0	.168	.108	.065	.145	.093	.057	.100	.065	.040	.058	.039	.024	.019	.013	.008	
8.0	.162	.102	.061	.139	.088	.053	.096	.062	.038	.056	.037	.022	.018	.012	.007	
9.0	.155	.097	.057	.134	.084	.050	.093	.059	.036	.054	.035	.021	.018	.011	.007	
10.0	.150	.093	.055	.129	.080	.048	.090	.057	.034	.052	.033	.020	.017	.011	.007	

C Range: 0 - 360DEG
C Interval: 30.0DEG
Test Speed: HIGH
Temperature:25.3℃
Operators:
Test Date:2025-02-25

γ Range: 0 - 180DEG
γ Interval: 1.0DEG
Test System:EVERFINE GO-2000B_V1 SYSTEM V2.00.488
Humidity:65.0%
Test Distance:6.360m [K=1.0000]
Remarks:

UGR(Unified Glare Rating) Table

Test:U:24.00V I:0.7130A P:17.11W PF:1.000 Freq:0Hz Lamp Flux:435.482x1 lm											
NAME: SF16-24V-5050-72-RGBW(5000K)-80-ALL					TYPE:			WEIGHT:			
SPEC.:					DIM.: Length=1m			SERIAL No.:			
MFR.: OLympia lighting					SUR.:			Shielding Angle:			
ceiling/cavity	0.7	0.7	0.5	0.5	0.3	0.7	0.7	0.5	0.5	0.3	
walls	0.5	0.3	0.5	0.3	0.3	0.5	0.3	0.5	0.3	0.3	
working plane	0.2	0.2	0.2	0.2	0.2	0.2	0.2	0.2	0.2	0.2	
Room dimensions		Viewed crosswise					Viewed endwise				
x = 2H y = 2H	2H	23.0	24.5	23.4	24.8	25.1	22.8	24.3	23.1	24.6	24.9
	3H	24.8	26.2	25.1	26.5	26.8	24.5	25.9	24.9	26.2	26.5
	4H	25.6	26.9	26.0	27.2	27.6	25.3	26.6	25.7	26.9	27.3
	6H	26.3	27.5	26.7	27.9	28.3	26.0	27.2	26.4	27.6	27.9
	8H	26.6	27.8	27.0	28.2	28.5	26.3	27.4	26.7	27.8	28.2
	12H	26.9	28.0	27.3	28.4	28.8	26.5	27.6	26.9	28.0	28.4
4H	2H	23.7	25.0	24.0	25.3	25.6	23.5	24.8	23.9	25.1	25.5
	3H	25.6	26.8	26.0	27.1	27.5	25.4	26.6	25.8	26.9	27.3
	4H	26.6	27.6	27.0	28.0	28.5	26.3	27.4	26.8	27.8	28.2
	6H	27.5	28.4	27.9	28.8	29.3	27.2	28.1	27.6	28.5	29.0
	8H	27.8	28.7	28.3	29.1	29.6	27.5	28.4	28.0	28.8	29.3
	12H	28.2	29.0	28.7	29.4	29.9	27.8	28.6	28.3	29.1	29.6
8H	4H	26.9	27.8	27.4	28.2	28.7	26.7	27.6	27.2	28.0	28.5
	6H	28.0	28.7	28.5	29.2	29.7	27.7	28.5	28.3	29.0	29.5
	8H	28.5	29.2	29.0	29.7	30.2	28.2	28.9	28.7	29.4	29.9
	12H	29.0	29.6	29.5	30.1	30.6	28.6	29.2	29.2	29.7	30.3
12H	4H	27.0	27.8	27.5	28.2	28.7	26.8	27.6	27.3	28.0	28.5
	6H	28.1	28.8	28.6	29.3	29.8	27.9	28.5	28.4	29.0	29.6
	8H	28.7	29.2	29.2	29.8	30.3	28.4	29.0	28.9	29.5	30.0
Variations with the observer position at spacings(CIE Pub.117):											
S = 1.0H		+ 0.1 / - 0.2					+ 0.1 / - 0.2				
1.5H		+ 0.2 / - 0.3					+ 0.2 / - 0.3				
2.0H		+ 0.1 / - 0.3					+ 0.1 / - 0.3				

CIE Pub.117, 435.5 lm Total Lamp Luminous Flux Correct (8log(F/F0) = -2.9)
Area: 0.016 m2

C Range: 0 - 360DEG
C Interval: 30.0DEG
Test Speed: HIGH
Temperature:25.3℃
Operators:
Test Date:2025-02-25

γ Range: 0 - 180DEG
γ Interval: 1.0DEG
Test System:EVERFINE GO-2000B_V1 SYSTEM V2.00.488
Humidity:65.0%
Test Distance:6.360m [K=1.0000]
Remarks:

UTILIZATION FACTORS TABLE

Test:U:24.00V I:0.7130A P:17.11W PF:1.000 Freq:0Hz Lamp Flux:435.482x1 lm		
NAME: SF16-24V-5050-72-RGBW(5000K)-80-ALL	TYPE:	WEIGHT:
SPEC.:	DIM.: Length=1m	SERIAL No.:
MFR.: OLympia lighting	SUR.:	Shielding Angle:

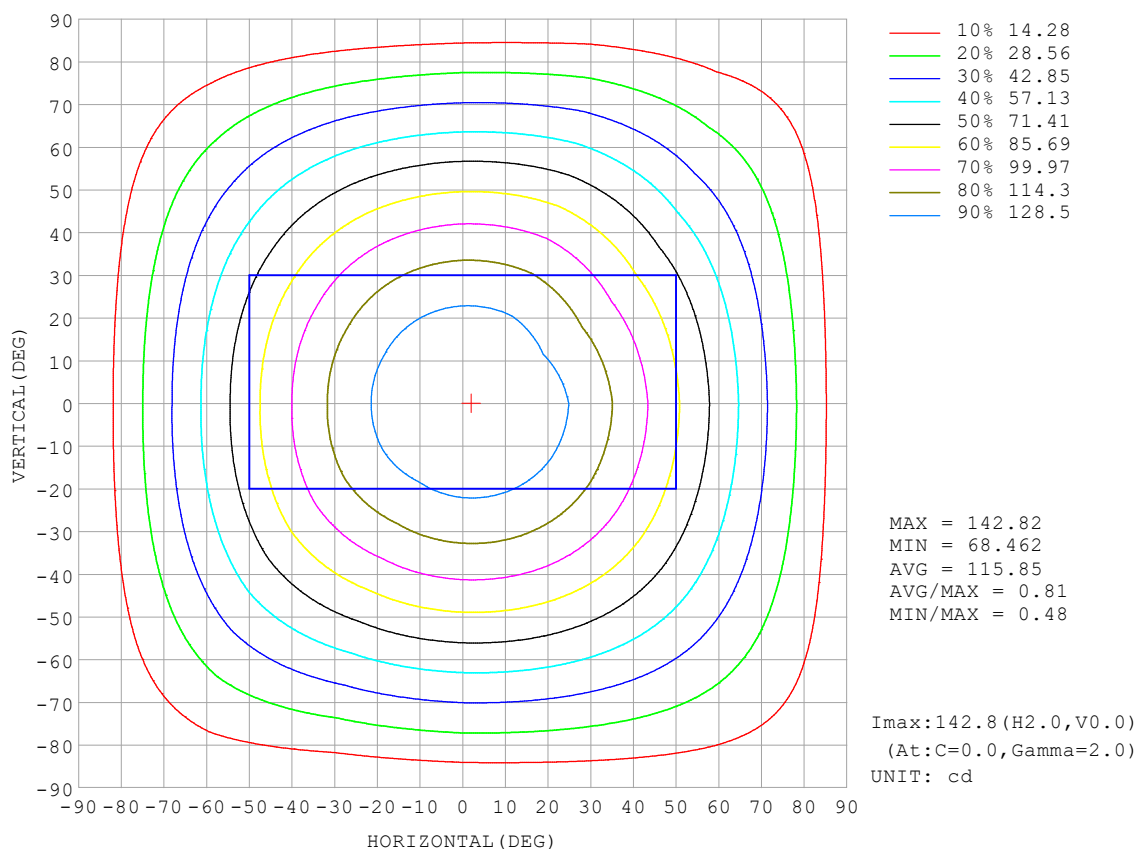
REFLECTANCE										
Ceiling	0.8	0.8	0.8	0.7	0.7	0.7	0.5	0.5	0.5	0
Walls	0.7	0.5	0.3	0.7	0.5	0.3	0.7	0.5	0.3	0
Working plane	0.2	0.2	0.2	0.2	0.2	0.2	0.2	0.2	0.2	0
ROOM INDEX	UTILIZATION FACTORS (PERCENT) $k(RI) \times RCR = 5$									
$k = 0.60$	55	44	37	55	43	37	53	43	36	30
0.80	65	53	46	64	53	46	62	52	45	38
1.00	74	62	54	72	61	54	70	62	53	46
1.25	81	70	62	79	69	62	76	67	61	53
1.50	86	75	68	84	74	67	80	72	66	58
2.00	93	83	77	90	82	76	86	79	74	65
2.50	97	88	82	94	87	81	90	83	78	69
3.00	100	93	87	97	91	85	93	87	83	73
4.00	104	98	93	101	96	91	96	92	88	78
5.00	107	101	97	104	99	95	99	95	92	81
ROOM INDEX	UF (total)									Direct
According to DIN EN 13032-2 2004			Suspended					SHRNOM = 1.25		

C Range: 0 - 360DEG
 C Interval: 30.0DEG
 Test Speed: HIGH
 Temperature: 25.3°C
 Operators:
 Test Date: 2025-02-25

γ Range: 0 - 180DEG
 γ Interval: 1.0DEG
 Test System: EVERFINE GO-2000B_V1 SYSTEM V2.00.488
 Humidity: 65.0%
 Test Distance: 6.360m [K=1.0000]
 Remarks:

ISOCANDELA DIAGRAM

Test:U:24.00V I:0.7130A P:17.11W PF:1.000 Freq:0Hz Lamp Flux:435.482x1 lm		
NAME: SF16-24V-5050-72-RGBW(5000K)-80-ALL	TYPE:	WEIGHT:
SPEC.:	DIM.: Length=1m	SERIAL No.:
MFR.: OLympia lighting	SUR.:	Shielding Angle:

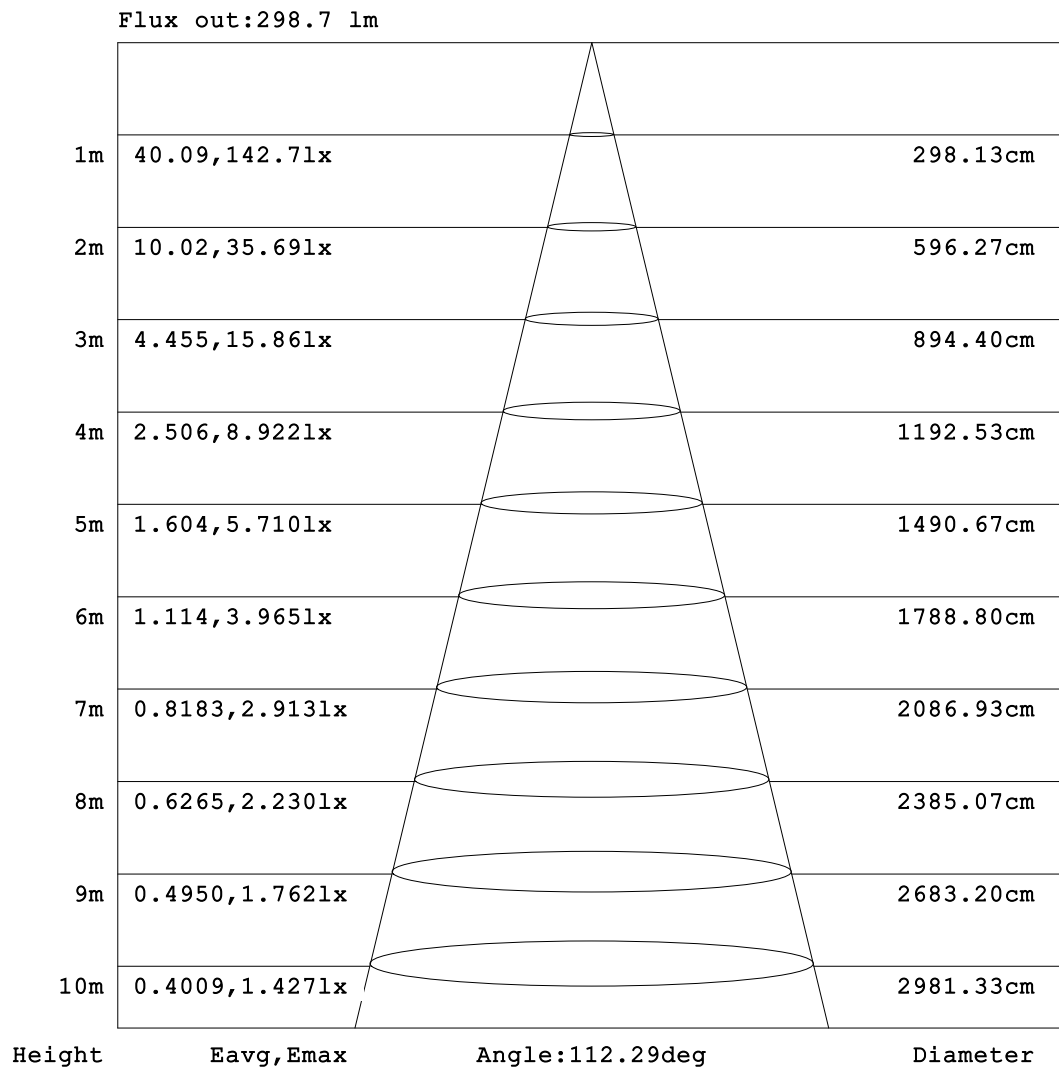


C Range: 0 - 360DEG
C Interval: 30.0DEG
Test Speed: HIGH
Temperature:25.3℃
Operators:
Test Date:2025-02-25

γ Range: 0 - 180DEG
γ Interval: 1.0DEG
Test System:EVERFINE GO-2000B_V1 SYSTEM V2.00.488
Humidity:65.0%
Test Distance:6.360m [K=1.0000]
Remarks:

AAI Figure

Test:U:24.00V I:0.7130A P:17.11W PF:1.000 Freq:0Hz Lamp Flux:435.482x1 lm		
NAME: SF16-24V-5050-72-RGBW(5000K)-80-ALL	TYPE:	WEIGHT:
SPEC.:	DIM.: Length=1m	SERIAL No.:
MFR.: OLympia lighting	SUR.:	Shielding Angle:



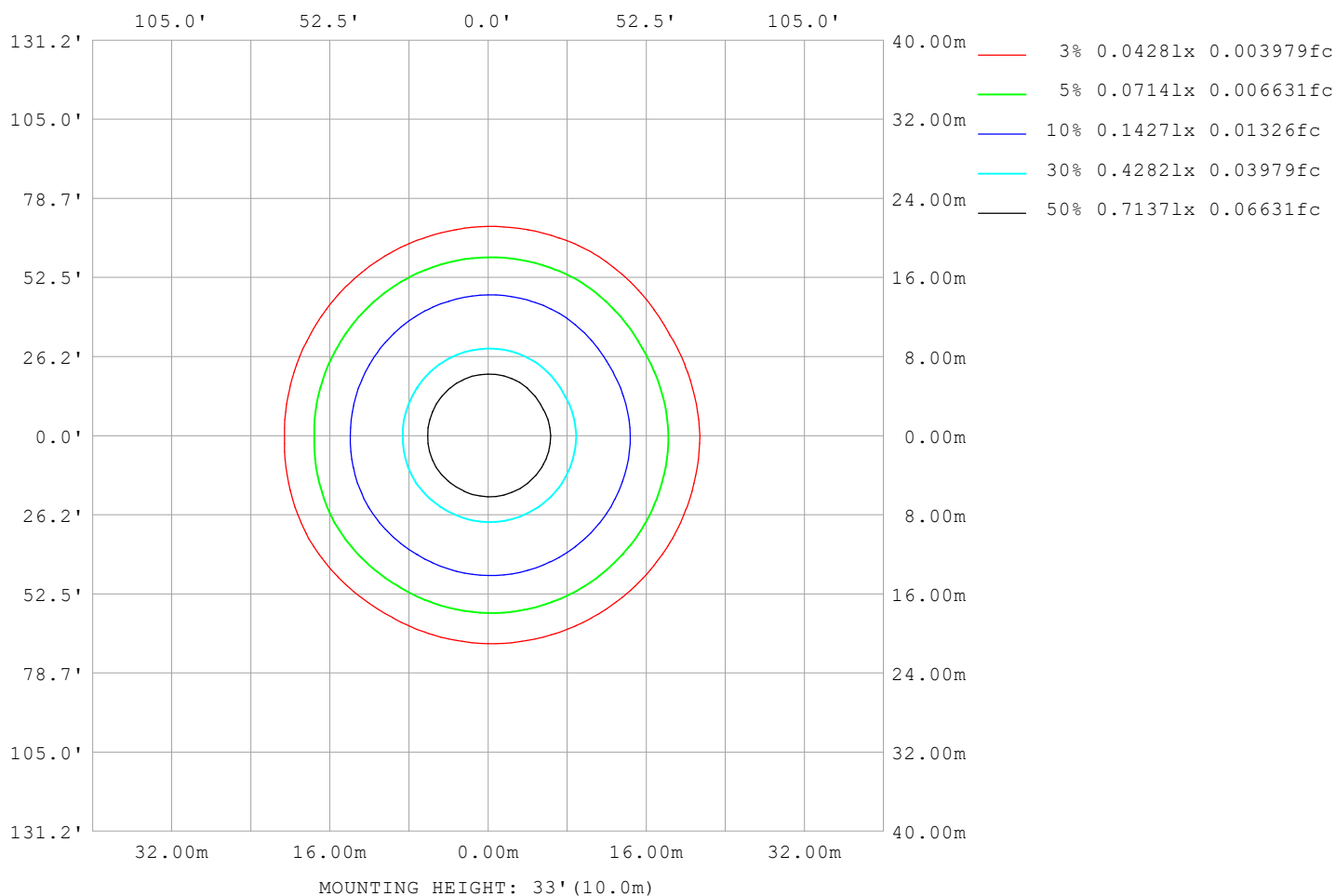
Note:The Curves indicate the illuminated area and the average illumination when the luminaire is at different distance.

C Range: 0 - 360DEG
C Interval: 30.0DEG
Test Speed: HIGH
Temperature:25.3℃
Operators:
Test Date:2025-02-25

γ Range: 0 - 180DEG
γ Interval: 1.0DEG
Test System:EVERFINE GO-2000B_V1 SYSTEM V2.00.488
Humidity:65.0%
Test Distance:6.360m [K=1.0000]
Remarks:

ISOLUX DIAGRAM

Test:U:24.00V I:0.7130A P:17.11W PF:1.000 Freq:0Hz Lamp Flux:435.482x1 lm		
NAME: SF16-24V-5050-72-RGBW(5000K)-80-ALL	TYPE:	WEIGHT:
SPEC.:	DIM.: Length=1m	SERIAL No.:
MFR.: OLympia lighting	SUR.:	Shielding Angle:



C Range: 0 - 360DEG
C Interval: 30.0DEG
Test Speed: HIGH
Temperature:25.3℃
Operators:
Test Date:2025-02-25

γ Range: 0 - 180DEG
γ Interval: 1.0DEG
Test System:EVERFINE GO-2000B_V1 SYSTEM V2.00.488
Humidity:65.0%
Test Distance:6.360m [K=1.0000]
Remarks:

LED Avg.L Report

Test:U:24.00V I:0.7130A P:17.11W PF:1.000 Freq:0Hz Lamp Flux:435.482x1 lm		
NAME: SF16-24V-5050-72-RGBW(5000K)-80-ALL	TYPE:	WEIGHT:
SPEC.:	DIM.: Length=1m	SERIAL No.:
MFR.: OLympia lighting	SUR.:	Shielding Angle:

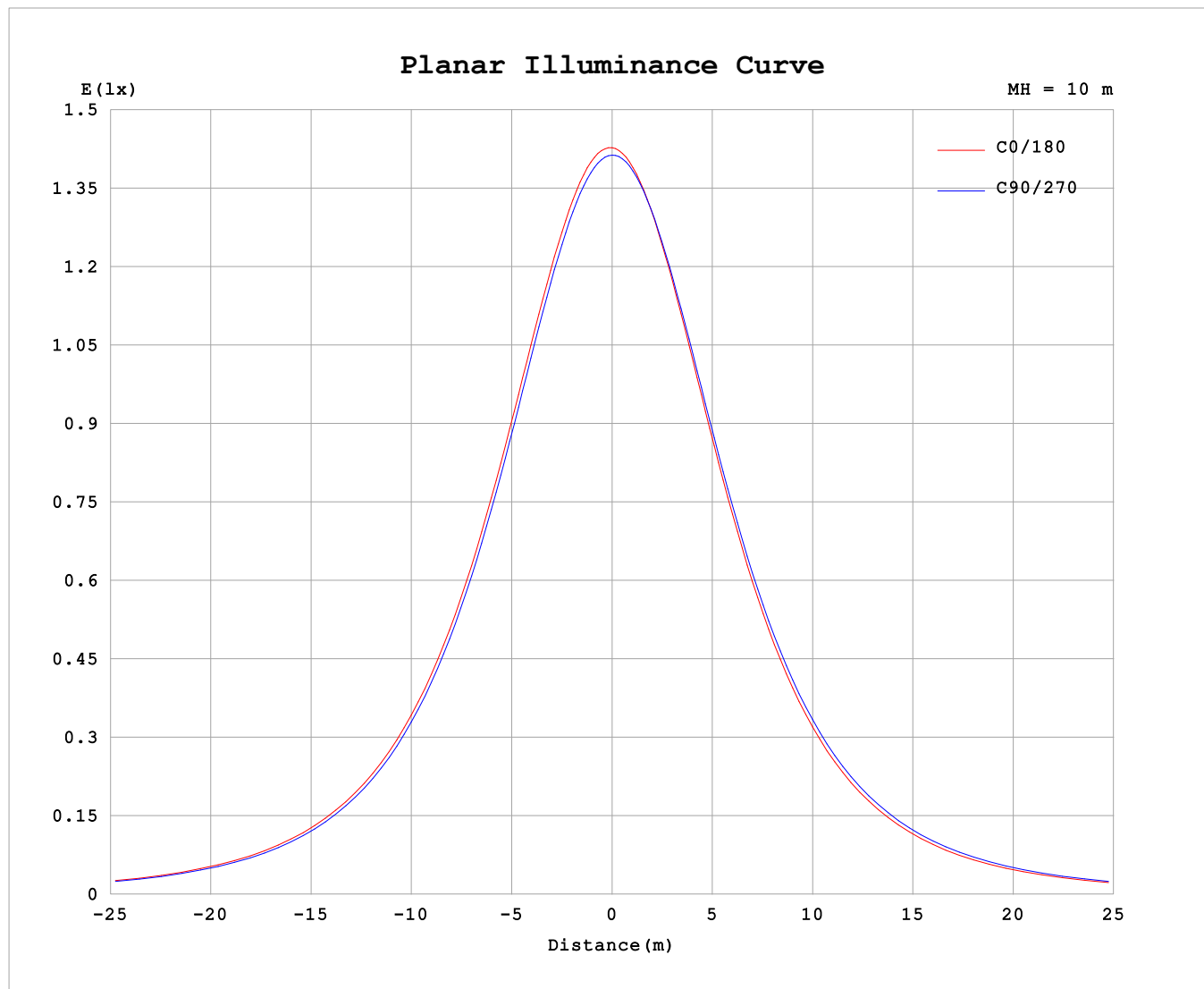
AvgL	cd/m2
L_0~180 (65) av	7758
L_0~180 (75) av	7637
L_0~180 (85) av	8389
L_90~270 (65) av	7948
L_90~270 (75) av	8024
L_90~270 (85) av	9123
L_45 (65) av	7861
L_45 (75) av	7802
L_45 (85) av	8519

Standard: GB/T 29293-2012

C Range: 0 - 360DEG
C Interval: 30.0DEG
Test Speed: HIGH
Temperature:25.3℃
Operators:
Test Date:2025-02-25

γ Range: 0 - 180DEG
γ Interval: 1.0DEG
Test System:EVERFINE GO-2000B_V1 SYSTEM V2.00.488
Humidity:65.0%
Test Distance:6.360m [K=1.0000]
Remarks:

Planar Illuminance Curve



C Range: 0 - 360DEG
C Interval: 30.0DEG
Test Speed: HIGH
Temperature: 25.3 °C
Operators:
Test Date: 2025-02-25

γ Range: 0 - 180DEG
 γ Interval: 1.0DEG
Test System: EVERFINE GO-2000B_V1 SYSTEM V2.00.488
Humidity: 65.0%
Test Distance: 6.360m [K=1.0000]
Remarks:

LUMINOUS DISTRIBUTION INTENSITY DATA

Test:U:24.00V I:0.7130A P:17.11W PF:1.000 Freq:0Hz Lamp Flux:435.482x1 lm		
NAME: SF16-24V-5050-72-RGBW(5000K)-80-ALL	TYPE:	WEIGHT:
SPEC.:	DIM.: Length=1m	SERIAL No.:
MFR.: OLympia lighting	SUR.:	Shielding Angle:

Table--1

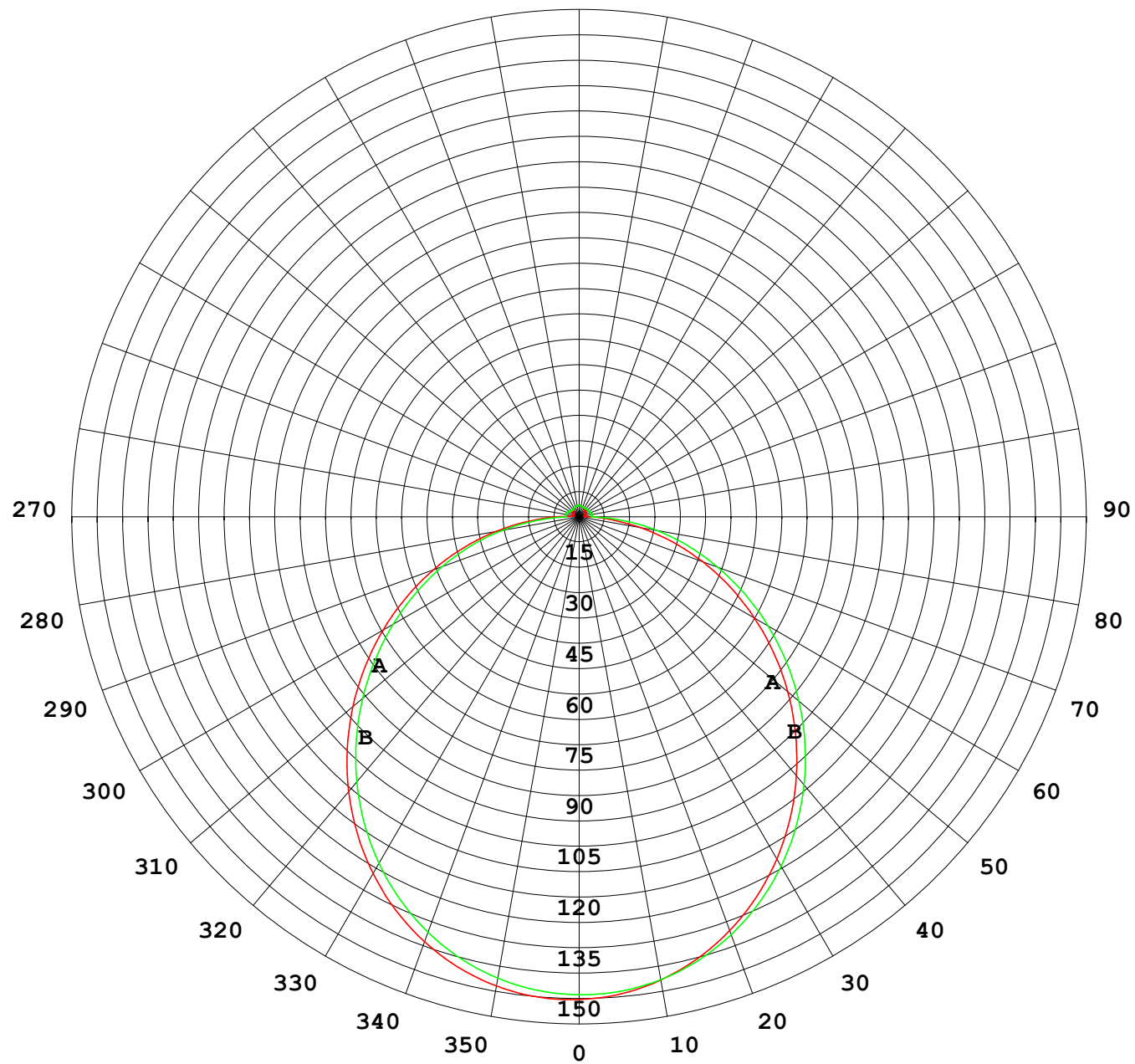
UNIT: cd

C (DEG) γ (DEG)	0	30	60	90	120	150	180	210	240	270	300	330							
0	142	142	142	142	142	142	142	142	142	142	142	142							
5	141	141	141	141	141	141	140	141	141	141	141	141							
10	140	140	139	139	138	139	138	138	139	139	140	139							
15	137	137	136	136	135	135	134	135	135	136	137	136							
20	133	133	132	131	130	131	129	130	131	132	133	131							
25	127	127	126	125	124	125	123	124	125	126	127	126							
30	121	121	120	119	117	119	116	117	118	120	121	119							
35	113	113	112	111	110	111	108	109	111	112	113	111							
40	105	105	104	102	101	102	99.2	100	102	104	105	103							
45	96.2	96.0	94.8	93.4	91.7	93.1	89.8	90.8	92.9	94.6	96.0	93.8							
50	86.6	86.4	85.2	83.8	82.0	83.3	79.9	81.0	83.2	85.0	86.4	84.2							
55	76.7	76.4	75.2	73.8	71.9	73.2	69.7	70.8	73.1	75.0	76.4	74.1							
60	66.4	66.1	65.0	63.6	61.5	62.9	59.4	60.4	62.8	64.7	66.1	63.8							
65	56.0	55.7	54.6	53.3	51.1	52.4	49.0	50.0	52.3	54.2	55.7	53.3							
70	45.5	45.2	44.2	43.2	40.8	42.0	38.5	39.6	41.9	43.7	45.2	42.8							
75	35.0	34.8	33.9	33.1	30.5	31.6	28.2	29.2	31.5	33.4	34.7	32.4							
80	24.7	24.4	23.6	22.9	20.2	21.3	18.0	18.9	21.4	23.5	24.6	22.0							
85	14.6	14.2	13.4	12.5	10.1	11.2	8.83	9.30	11.1	13.0	14.1	12.0							
90	6.69	6.06	4.92	3.88	3.61	4.53	3.49	3.82	4.02	3.74	5.39	5.04							
95	2.21	1.97	3.01	3.98	2.90	1.83	1.57	2.23	3.19	3.74	3.22	2.42							
100	1.80	1.83	3.02	4.02	3.00	1.88	1.64	2.28	3.30	3.72	3.23	2.36							
105	1.83	1.91	2.98	3.99	3.05	1.98	1.76	2.34	3.33	3.77	3.19	2.35							
110	1.96	2.02	2.90	3.82	3.03	2.10	1.87	2.39	3.27	3.70	3.12	2.33							
115	2.08	2.14	2.82	3.59	2.96	2.22	1.98	2.41	3.18	3.55	3.06	2.35							
120	2.20	2.25	2.76	3.37	2.90	2.34	2.09	2.45	3.12	3.42	3.02	2.38							
125	2.33	2.37	2.72	3.16	2.83	2.45	2.21	2.50	3.08	3.34	2.99	2.42							
130	2.45	2.48	2.68	2.99	2.78	2.57	2.34	2.54	3.04	3.27	2.95	2.48							
135	2.55	2.59	2.67	2.87	2.76	2.68	2.46	2.60	3.01	3.20	2.93	2.54							
140	2.67	2.70	2.70	2.85	2.79	2.79	2.59	2.67	3.01	3.14	2.92	2.61							
145	2.77	2.80	2.80	2.89	2.89	2.91	2.72	2.75	3.01	3.10	2.93	2.70							
150	2.89	2.91	2.91	3.00	3.00	3.02	2.84	2.86	3.03	3.07	2.95	2.80							
155	3.01	3.02	3.02	3.11	3.11	3.12	2.97	2.97	3.07	3.07	3.00	2.92							
160	3.12	3.14	3.13	3.22	3.21	3.23	3.09	3.08	3.14	3.10	3.07	3.04							
165	3.22	3.24	3.23	3.31	3.30	3.32	3.20	3.19	3.24	3.20	3.19	3.16							
170	3.31	3.32	3.32	3.39	3.36	3.38	3.31	3.28	3.34	3.30	3.30	3.27							
175	3.37	3.38	3.38	3.44	3.41	3.43	3.39	3.35	3.41	3.38	3.39	3.36							
180	3.40	3.42	3.42	3.45	3.43	3.44	3.42	3.40	3.43	3.44	3.45	3.42							

C Range: 0 - 360DEG
C Interval: 30.0DEG
Test Speed: HIGH
Temperature:25.3℃
Operators:
Test Date:2025-02-25

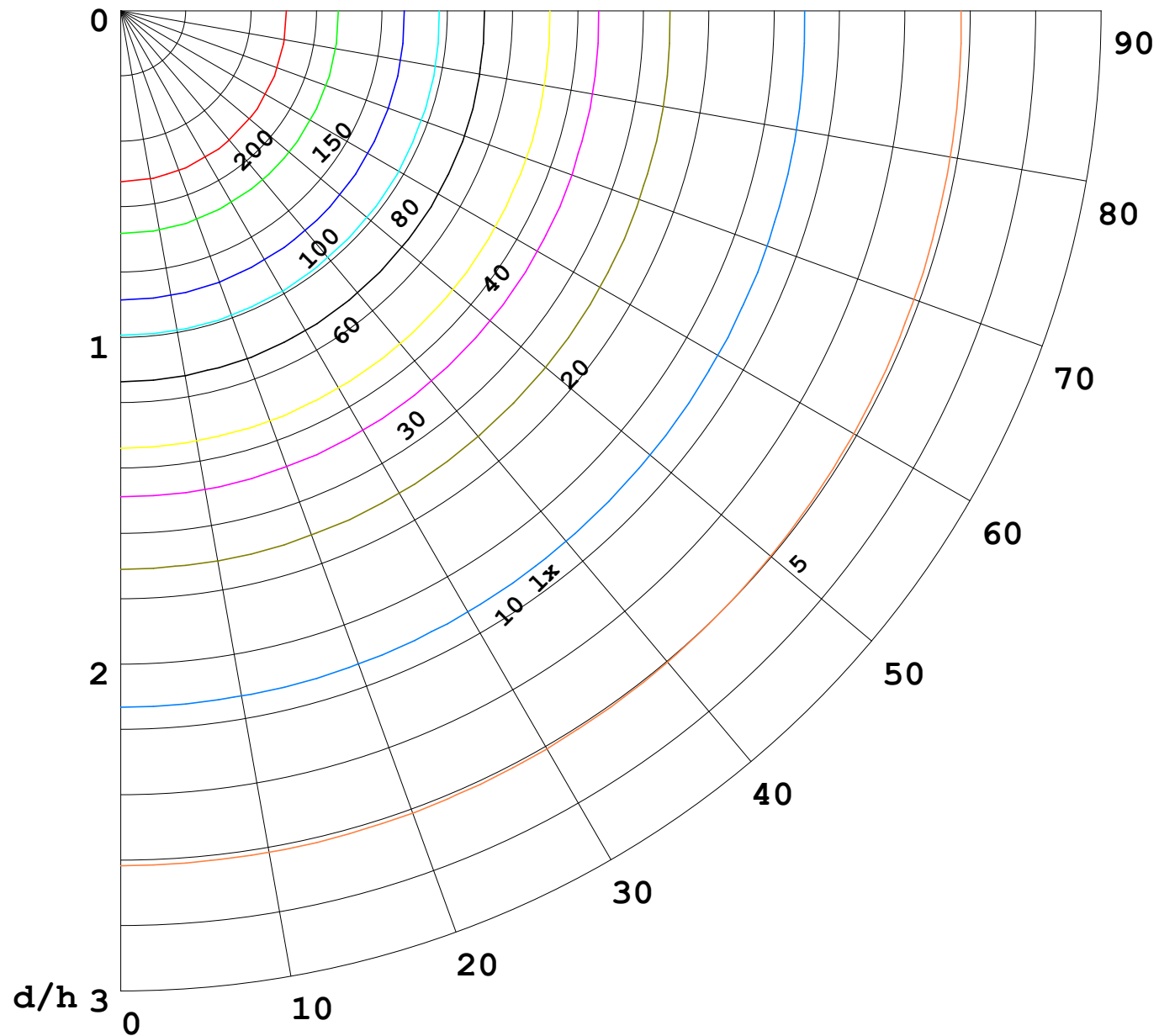
γ Range: 0 - 180DEG
γ Interval: 1.0DEG
Test System:EVERFINE GO-2000B_V1 SYSTEM V2.00.488
Humidity:65.0%
Test Distance:6.360m [K=1.0000]
Remarks:

I (cd)



1000 lm

$\kappa = 1$



F = 1000 lm
 K = 0.7
 Hcc = 0.8 m
 Hfc = 0.0 m
 Eave = 100 lx

	Pcc	Pw	Pfc
—————	70	50	30
—————	50	30	20

