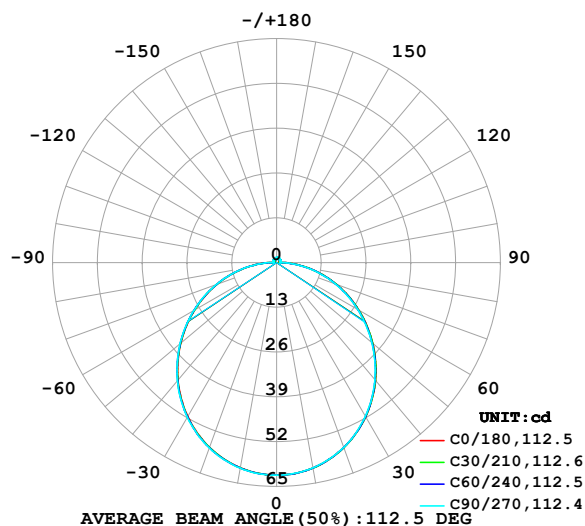


LUMINAIRE PHOTOMETRIC TEST REPORT

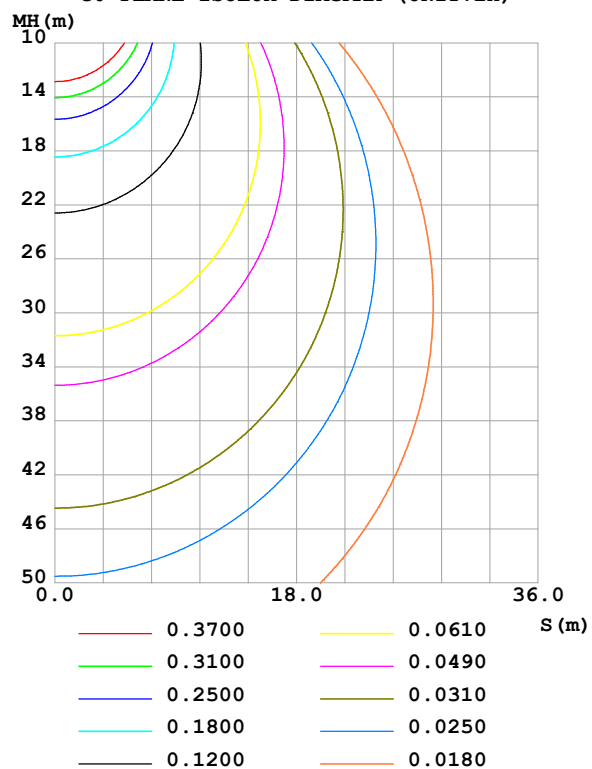
Test:U:24.00V I:0.4383A P:10.52W PF:1.000 Freq:0Hz Lamp Flux:188.378x1 lm		
NAME: SF16-24V-5050-70-SPI-RGBW(4000K)-W	TYPE:	WEIGHT:
SPEC.:	DIM.: Length=1m	SERIAL No.:
MFR.: OLympia lighting	SUR.:	Shielding Angle:

DATA OF LAMP		PHOTOMETRIC DATA				Eff: 17.91 lm/W
MODEL	5050	I _{max} (cd)	61.72	S/MH(C0/180)	1.24	
NOMINAL POWER(W)		LOR(%)	100.0	S/MH(C90/270)	1.25	
RATED VOLTAGE(V)	24	TOTAL FLUX(lm)	188.38	η UP,DN(C0-180)	1.9,47.8	
NOMINAL FLUX(lm)	188.378	CIE CLASS	DIRECT	η UP,DN(C180-360)	1.9,48.3	
LAMPS INSIDE	1	η up (%)	3.8	CIBSE SHR NOM	1.25	
TEST VOLTAGE(V)		η down (%)	96.2	CIBSE SHR MAX	1.35	

LUMINOUS INTENSITY DISTRIBUTION DIAGRAM



C0 PLANE ISOLUX DIAGRAM (UNIT:lx)



C Range: 0 - 360DEG
C Interval: 30.0DEG
Test Speed: HIGH
Temperature:25.3℃
Operators:
Test Date:2025-03-11

γ Range: 0 - 180DEG
γ Interval: 1.0DEG
Test System:EVERFINE GO-2000B_V1 SYSTEM V2.00.488
Humidity:65.0%
Test Distance:6.360m [K=1.0000]
Remarks:

ZONAL FLUX DIAGRAM

ZONAL FLUX DIAGRAM:

γ	C0	C45	C90	C135	C180	C225	C270	C315	γ	Φ zone	Φ total	%lum, lamp
10	60.56	60.57	60.51	60.47	60.50	60.54	60.61	60.66	0- 10	5.836	5.836	3.1,3.1
20	57.13	57.14	57.07	57.01	57.05	57.15	57.25	57.32	10- 20	16.68	22.52	12,12
30	51.75	51.68	51.53	51.52	51.60	51.74	51.87	51.96	20- 30	25.18	47.70	25.3,25.3
40	44.69	44.57	44.37	44.39	44.53	44.69	44.83	44.97	30- 40	30.24	77.95	41.4,41.4
50	36.45	36.31	36.08	36.12	36.32	36.48	36.61	36.76	40- 50	31.35	109.3	58,58
60	27.55	27.42	27.20	27.22	27.47	27.61	27.73	27.89	50- 60	28.62	137.9	73.2,73.2
70	18.46	18.35	18.13	18.15	18.41	18.52	18.61	18.78	60- 70	22.75	160.7	85.3,85.3
80	9.518	9.404	9.184	9.206	9.487	9.546	9.582	9.777	70- 80	14.70	175.4	93.1,93.1
90	2.389	1.913	0.9855	1.871	2.391	1.985	1.063	2.066	80- 90	5.773	181.1	96.2,96.2
100	0.8420	0.9620	1.029	0.9733	0.7501	0.9389	1.075	0.9365	90-100	1.200	182.3	96.8,96.8
110	0.9156	1.043	1.051	1.064	0.8489	1.024	1.158	1.008	100-110	1.037	183.4	97.3,97.3
120	1.023	1.123	1.086	1.154	0.9478	1.099	1.222	1.078	110-120	1.052	184.4	97.9,97.9
130	1.125	1.205	1.213	1.232	1.055	1.172	1.265	1.134	120-130	1.021	185.5	98.4,98.4
140	1.209	1.290	1.282	1.311	1.143	1.243	1.305	1.199	130-140	0.9409	186.4	98.9,98.9
150	1.297	1.361	1.409	1.380	1.224	1.315	1.348	1.266	140-150	0.8085	187.2	99.4,99.4
160	1.389	1.420	1.475	1.450	1.372	1.377	1.403	1.349	150-160	0.6315	187.8	99.7,99.7
170	1.459	1.465	1.508	1.497	1.459	1.458	1.458	1.453	160-170	0.4060	188.2	99.9,99.9
180	1.497	1.503	1.516	1.513	1.491	1.503	1.521	1.512	170-180	0.1419	188.4	100,100
DEG	LUMINOUS INTENSITY:cd									UNIT:lm		

Conical surface Flux(90deg): 93.731 lm

%lum = 49.8%

%lamp = 49.8%

Conical surface Flux(130deg): 150.18 lm

%lum = 79.7%

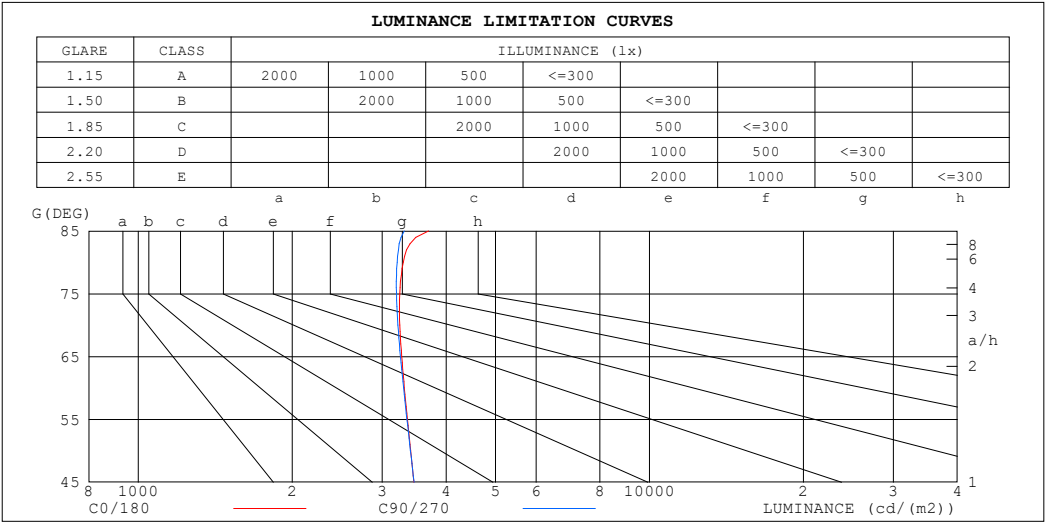
%lamp = 79.7%

C Range: 0 - 360DEG
 C Interval: 30.0DEG
 Test Speed: HIGH
 Temperature:25.3℃
 Operators:
 Test Date:2025-03-11

γ Range: 0 - 180DEG
 γ Interval: 1.0DEG
 Test System:EVERFINE GO-2000B_V1 SYSTEM V2.00.488
 Humidity:65.0%
 Test Distance:6.360m [K=1.0000]
 Remarks:

LUMINANCE LIMITATION CURVES

Test:U:24.00V I:0.4383A P:10.52W PF:1.000 Freq:0Hz Lamp Flux:188.378x1 lm		
NAME: SF16-24V-5050-70-SPI-RGBW(4000K)-W	TYPE:	WEIGHT:
SPEC.:	DIM.: Length=1m	SERIAL No.:
MFR.: OLympia lighting	SUR.:	Shielding Angle:



LUMINANCE cd/(m2)		
G (DEG)	C0/180	C90/270
85	3699	3314
80	3298	3211
75	3247	3201
70	3248	3219
65	3276	3256
60	3315	3302
55	3362	3352
50	3412	3408
45	3461	3463

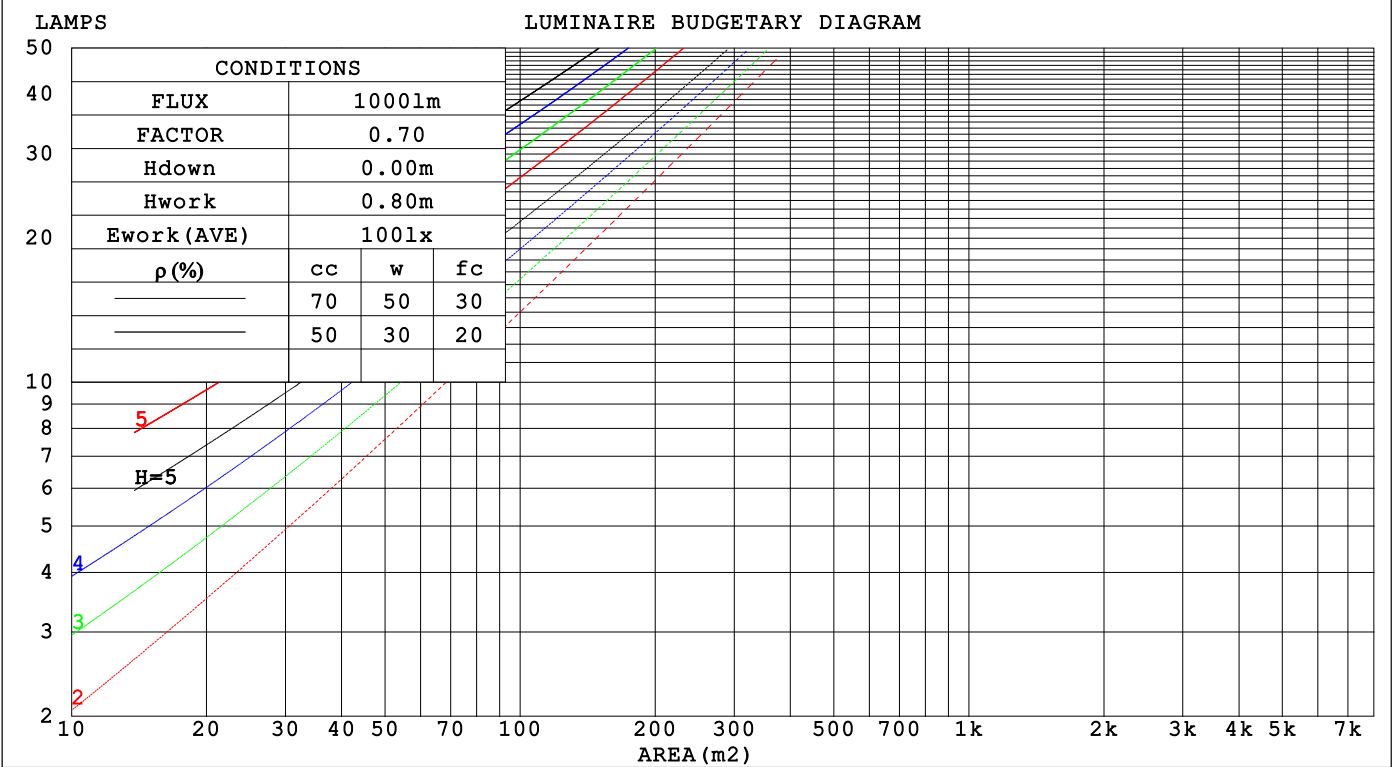
C Range: 0 - 360DEG
C Interval: 30.0DEG
Test Speed: HIGH
Temperature:25.3℃
Operators:
Test Date:2025-03-11

γ Range: 0 - 180DEG
γ Interval: 1.0DEG
Test System:EVERFINE GO-2000B_V1 SYSTEM V2.00.488
Humidity:65.0%
Test Distance:6.360m [K=1.0000]
Remarks:

CU AND LUMINAIRE BUDGETARY ESTIMATE DIAGRAM

Test:U:24.00V I:0.4383A P:10.52W PF:1.000 Freq:0Hz		
Lamp Flux:188.378x1 lm		
NAME: SF16-24V-5050-70-SPI-RGBW(4000K)-W	TYPE:	WEIGHT:
SPEC.:	DIM.: Length=1m	SERIAL No.:
MFR.: OLYMPIA lighting	SUR.:	Shielding Angle:

pcc	80%			70%			50%			30%			10%			0
pw	50%	30%	10%	50%	30%	10%	50%	30%	10%	50%	30%	10%	50%	30%	10%	0
pfc	20%			20%			20%			20%			20%			0
RCR	RCR:Room Cavity Ratio															



C Range: 0 - 360DEG
C Interval: 30.0DEG
Test Speed: HIGH
Temperature:25.3℃
Operators:
Test Date:2025-03-11

γ Range: 0 - 180DEG
γ Interval: 1.0DEG
Test System:EVERFINE GO-2000B_V1 SYSTEM V2.00.488
Humidity:65.0%
Test Distance:6.360m [K=1.0000]
Remarks:

WEC AND CCEC

Test:U:24.00V I:0.4383A P:10.52W PF:1.000 Freq:0Hz Lamp Flux:188.378x1 lm		
NAME: SF16-24V-5050-70-SPI-RGBW(4000K)-W	TYPE:	WEIGHT:
SPEC.:	DIM.: Length=1m	SERIAL No.:
MFR.: OLympia lighting	SUR.:	Shielding Angle:

pcc	80%			70%			50%			30%			10%			0														
pw	50%	30%	10%	50%	30%	10%	50%	30%	10%	50%	30%	10%	50%	30%	10%	0														
pfc	20%			20%			20%			20%			20%			0														
RCR	RCR:Room Cavity Ratio															Wall Exitance Coefficients(WEC)														
0.0																														
1.0	.327	.186	.059	.318	.182	.058	.303	.174	.055	.288	.166	.053	.275	.160	.051															
2.0	.301	.165	.051	.294	.162	.050	.280	.156	.048	.267	.150	.047	.255	.144	.046															
3.0	.276	.147	.044	.269	.144	.043	.257	.139	.042	.246	.135	.041	.235	.130	.040															
4.0	.253	.131	.039	.247	.129	.038	.236	.125	.037	.226	.121	.037	.216	.118	.036															
5.0	.233	.119	.034	.228	.117	.034	.218	.113	.033	.209	.110	.033	.200	.107	.032															
6.0	.215	.108	.031	.211	.106	.031	.202	.103	.030	.194	.101	.030	.186	.098	.029															
7.0	.200	.099	.028	.196	.098	.028	.188	.095	.027	.180	.092	.027	.173	.090	.026															
8.0	.186	.091	.026	.183	.090	.025	.176	.088	.025	.169	.085	.025	.162	.083	.024															
9.0	.175	.084	.024	.171	.083	.023	.165	.081	.023	.158	.079	.023	.153	.078	.022															
10.0	.164	.079	.022	.161	.078	.022	.155	.076	.021	.149	.074	.021	.144	.072	.021															

pcc	80%			70%			50%			30%			10%			0
pw	50%	30%	10%	50%	30%	10%	50%	30%	10%	50%	30%	10%	50%	30%	10%	0
pfc	20%			20%			20%			20%			20%			0
RCR	RCR:Room Cavity Ratio						Ceiling Cavity Exitance Coefficients (CCEC)									
0.0	.220	.220	.220	.188	.188	.188	.128	.128	.128	.074	.074	.074	.024	.024	.024	
1.0	.211	.186	.163	.181	.159	.140	.123	.110	.097	.071	.063	.056	.023	.020	.018	
2.0	.203	.162	.127	.174	.139	.109	.119	.096	.076	.069	.056	.045	.022	.018	.015	
3.0	.195	.144	.103	.168	.124	.090	.115	.086	.063	.066	.050	.037	.021	.016	.012	
4.0	.188	.131	.088	.161	.113	.076	.111	.079	.054	.064	.046	.032	.021	.015	.010	
5.0	.180	.121	.077	.155	.105	.067	.107	.073	.047	.062	.043	.028	.020	.014	.009	
6.0	.173	.113	.069	.149	.097	.060	.103	.068	.043	.060	.040	.025	.019	.013	.008	
7.0	.166	.106	.063	.143	.092	.055	.099	.064	.039	.057	.038	.023	.019	.012	.008	
8.0	.160	.100	.059	.137	.087	.051	.095	.061	.036	.055	.036	.022	.018	.012	.007	
9.0	.153	.095	.056	.132	.082	.048	.092	.058	.034	.053	.034	.021	.017	.011	.007	
10.0	.148	.091	.053	.127	.079	.046	.088	.055	.033	.052	.033	.020	.017	.011	.006	

C Range: 0 - 360DEG
C Interval: 30.0DEG
Test Speed: HIGH
Temperature:25.3℃
Operators:
Test Date:2025-03-11

γ Range: 0 - 180DEG
γ Interval: 1.0DEG
Test System:EVERFINE GO-2000B_V1 SYSTEM V2.00.488
Humidity:65.0%
Test Distance:6.360m [K=1.0000]
Remarks:

UGR(Unified Glare Rating) Table

Test:U:24.00V I:0.4383A P:10.52W PF:1.000 Freq:0Hz Lamp Flux:188.378x1 lm											
NAME: SF16-24V-5050-70-SPI-RGBW(4000K)-W					TYPE:			WEIGHT:			
SPEC.:					DIM.: Length=1m			SERIAL No.:			
MFR.: OLympia lighting					SUR.:			Shielding Angle:			
ceiling/cavity	0.7	0.7	0.5	0.5	0.3	0.7	0.7	0.5	0.5	0.3	
walls	0.5	0.3	0.5	0.3	0.3	0.5	0.3	0.5	0.3	0.3	
working plane	0.2	0.2	0.2	0.2	0.2	0.2	0.2	0.2	0.2	0.2	
Room dimensions		Viewed crosswise					Viewed endwise				
x = 2H y = 2H	2H	22.5	24.0	22.8	24.3	24.6	22.5	24.0	22.8	24.3	24.5
	3H	24.2	25.6	24.6	25.9	26.2	24.2	25.5	24.5	25.8	26.2
	4H	25.0	26.3	25.3	26.6	26.9	24.9	26.2	25.3	26.5	26.9
	6H	25.6	26.8	26.0	27.2	27.5	25.5	26.8	25.9	27.1	27.5
	8H	25.9	27.0	26.3	27.4	27.8	25.8	27.0	26.2	27.3	27.7
	12H	26.1	27.2	26.5	27.6	28.0	26.0	27.1	26.4	27.5	27.9
4H	2H	23.2	24.5	23.5	24.8	25.1	23.1	24.4	23.5	24.8	25.1
	3H	25.0	26.2	25.5	26.6	26.9	25.0	26.2	25.4	26.5	26.9
	4H	25.9	27.0	26.4	27.4	27.8	25.9	26.9	26.3	27.3	27.7
	6H	26.7	27.7	27.2	28.1	28.5	26.7	27.6	27.1	28.0	28.5
	8H	27.1	27.9	27.5	28.4	28.8	27.0	27.8	27.4	28.3	28.7
	12H	27.3	28.1	27.8	28.6	29.1	27.2	28.0	27.7	28.5	29.0
8H	4H	26.3	27.1	26.7	27.6	28.0	26.2	27.1	26.7	27.5	28.0
	6H	27.3	28.0	27.8	28.5	29.0	27.2	27.9	27.7	28.4	28.9
	8H	27.7	28.3	28.2	28.8	29.4	27.6	28.3	28.1	28.8	29.3
	12H	28.1	28.7	28.6	29.2	29.7	28.0	28.5	28.5	29.1	29.6
12H	4H	26.3	27.1	26.8	27.6	28.0	26.3	27.1	26.8	27.5	28.0
	6H	27.4	28.0	27.9	28.5	29.0	27.3	27.9	27.8	28.4	29.0
	8H	27.9	28.4	28.4	28.9	29.5	27.8	28.3	28.3	28.8	29.4
Variations with the observer position at spacings(CIE Pub.117):											
S = 1.0H		+ 0.1 / - 0.2					+ 0.1 / - 0.2				
1.5H		+ 0.2 / - 0.3					+ 0.2 / - 0.3				
2.0H		+ 0.1 / - 0.3					+ 0.1 / - 0.3				

CIE Pub.117, 188.4 lm Total Lamp Luminous Flux Correct (8log(F/F0) = -5.8)
Area: 0.0165 m2

C Range: 0 - 360DEG
C Interval: 30.0DEG
Test Speed: HIGH
Temperature:25.3℃
Operators:
Test Date:2025-03-11

γ Range: 0 - 180DEG
γ Interval: 1.0DEG
Test System:EVERFINE GO-2000B_V1 SYSTEM V2.00.488
Humidity:65.0%
Test Distance:6.360m [K=1.0000]
Remarks:

UTILIZATION FACTORS TABLE

Test:U:24.00V I:0.4383A P:10.52W PF:1.000 Freq:0Hz Lamp Flux:188.378x1 lm		
NAME: SF16-24V-5050-70-SPI-RGBW(4000K)-W	TYPE:	WEIGHT:
SPEC.:	DIM.: Length=1m	SERIAL No.:
MFR.: OLympia lighting	SUR.:	Shielding Angle:

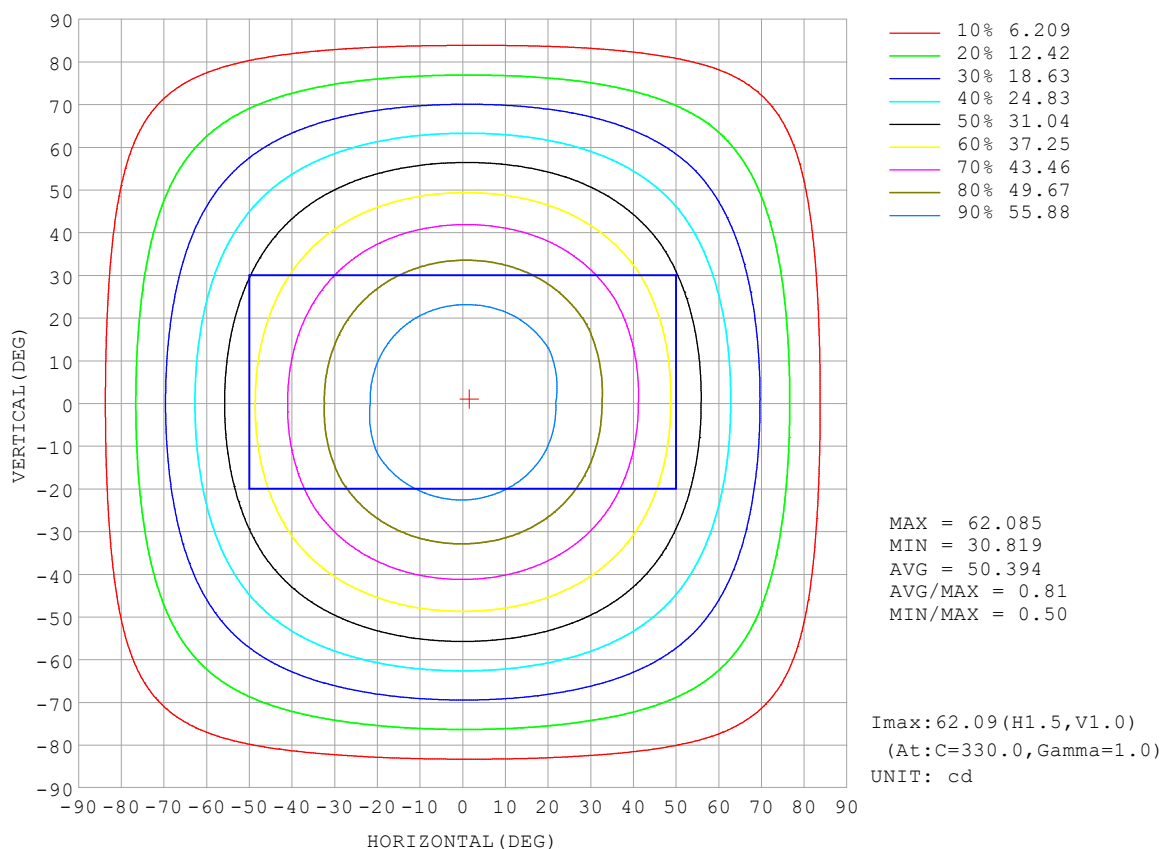
REFLECTANCE										
Ceiling	0.8	0.8	0.8	0.7	0.7	0.7	0.5	0.5	0.5	0
Walls	0.7	0.5	0.3	0.7	0.5	0.3	0.7	0.5	0.3	0
Working plane	0.2	0.2	0.2	0.2	0.2	0.2	0.2	0.2	0.2	0
ROOM INDEX	UTILIZATION FACTORS (PERCENT) $k(RI) \times RCR = 5$									
$k = 0.60$	56	44	37	55	44	37	53	43	36	30
0.80	65	54	46	64	53	46	62	52	45	38
1.00	74	62	55	72	62	54	70	63	54	46
1.25	81	70	62	79	69	62	76	67	61	53
1.50	86	75	68	84	74	67	80	72	66	58
2.00	93	84	77	91	82	76	86	80	74	65
2.50	97	88	82	94	87	81	90	84	79	69
3.00	100	93	87	98	91	86	93	88	83	73
4.00	104	98	93	102	96	92	97	92	88	78
5.00	107	102	97	104	99	95	99	95	92	81
ROOM INDEX	UF(total)									Direct
According to DIN EN 13032-2 2004			Suspended					SHRNOM = 1.25		

C Range: 0 - 360DEG
 C Interval: 30.0DEG
 Test Speed: HIGH
 Temperature: 25.3°C
 Operators:
 Test Date: 2025-03-11

γ Range: 0 - 180DEG
 γ Interval: 1.0DEG
 Test System: EVERFINE GO-2000B_V1 SYSTEM V2.00.488
 Humidity: 65.0%
 Test Distance: 6.360m [K=1.0000]
 Remarks:

ISOCANDELA DIAGRAM

Test:U:24.00V I:0.4383A P:10.52W PF:1.000 Freq:0Hz Lamp Flux:188.378x1 lm		
NAME: SF16-24V-5050-70-SPI-RGBW(4000K)-W	TYPE:	WEIGHT:
SPEC.:	DIM.: Length=1m	SERIAL No.:
MFR.: OLympia lighting	SUR.:	Shielding Angle:

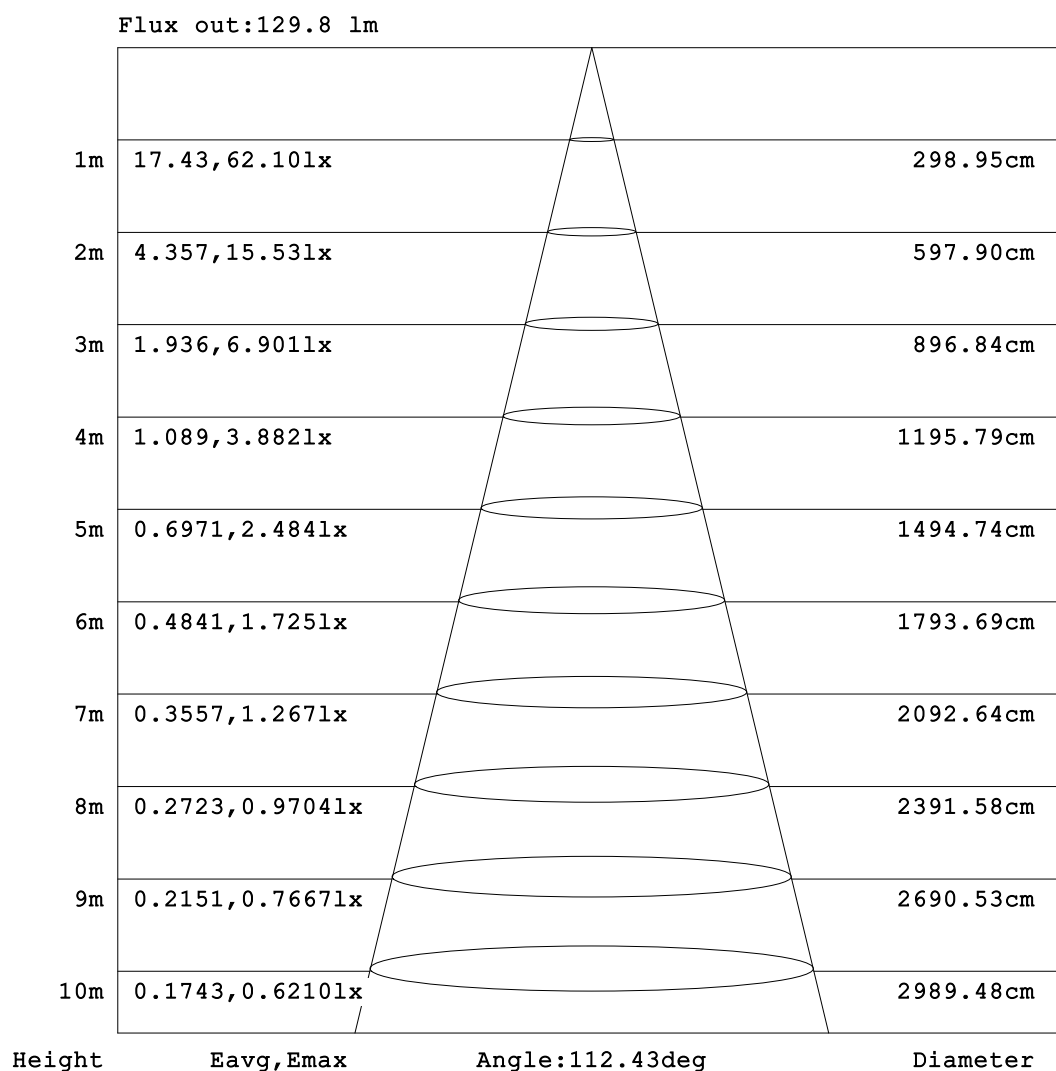


C Range: 0 - 360DEG
C Interval: 30.0DEG
Test Speed: HIGH
Temperature: 25.3°C
Operators:
Test Date: 2025-03-11

γ Range: 0 - 180DEG
γ Interval: 1.0DEG
Test System: EVERFINE GO-2000B_V1 SYSTEM V2.00.488
Humidity: 65.0%
Test Distance: 6.360m [K=1.0000]
Remarks:

AAI Figure

Test:U:24.00V I:0.4383A P:10.52W PF:1.000 Freq:0Hz Lamp Flux:188.378x1 lm		
NAME: SF16-24V-5050-70-SPI-RGBW(4000K)-W	TYPE:	WEIGHT:
SPEC.:	DIM.: Length=1m	SERIAL No.:
MFR.: OLympia lighting	SUR.:	Shielding Angle:



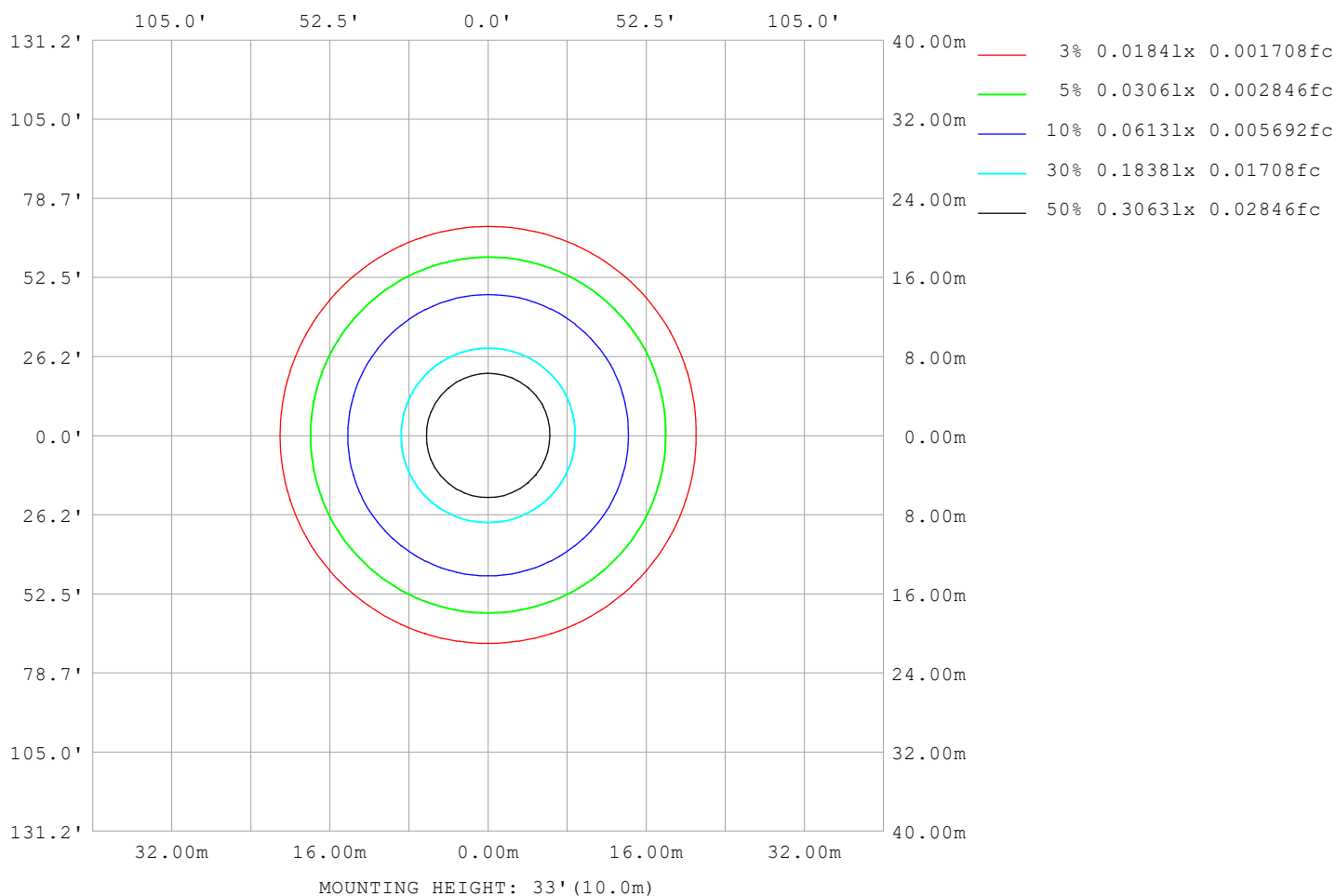
Note:The Curves indicate the illuminated area and the average illumination when the luminaire is at different distance.

C Range: 0 - 360DEG
C Interval: 30.0DEG
Test Speed: HIGH
Temperature:25.3℃
Operators:
Test Date:2025-03-11

γ Range: 0 - 180DEG
γ Interval: 1.0DEG
Test System:EVERFINE GO-2000B_V1 SYSTEM V2.00.488
Humidity:65.0%
Test Distance:6.360m [K=1.0000]
Remarks:

ISOLUX DIAGRAM

Test:U:24.00V I:0.4383A P:10.52W PF:1.000 Freq:0Hz Lamp Flux:188.378x1 lm		
NAME: SF16-24V-5050-70-SPI-RGBW(4000K)-W	TYPE:	WEIGHT:
SPEC.:	DIM.: Length=1m	SERIAL No.:
MFR.: OLympia lighting	SUR.:	Shielding Angle:



C Range: 0 - 360DEG
C Interval: 30.0DEG
Test Speed: HIGH
Temperature: 25.3°C
Operators:
Test Date: 2025-03-11

γ Range: 0 - 180DEG
γ Interval: 1.0DEG
Test System: EVERFINE GO-2000B_V1 SYSTEM V2.00.488
Humidity: 65.0%
Test Distance: 6.360m [K=1.0000]
Remarks:

LED Avg.L Report

Test:U:24.00V I:0.4383A P:10.52W PF:1.000 Freq:0Hz Lamp Flux:188.378x1 lm		
NAME: SF16-24V-5050-70-SPI-RGBW(4000K)-W	TYPE:	WEIGHT:
SPEC.:	DIM.: Length=1m	SERIAL No.:
MFR.: OLympia lighting	SUR.:	Shielding Angle:

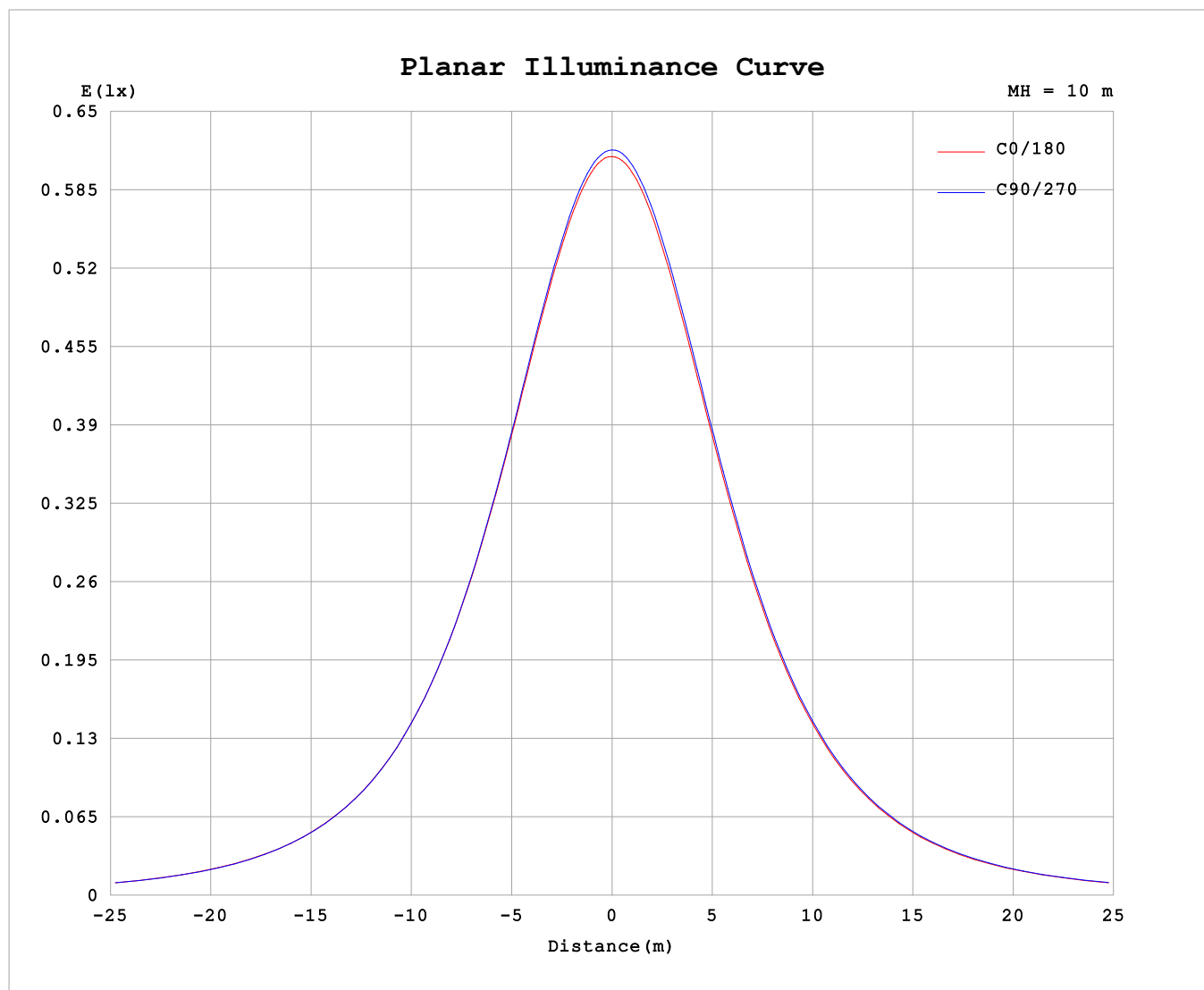
AvgL	cd/m2
L_0~180 (65) av	3296
L_0~180 (75) av	3265
L_0~180 (85) av	3679
L_90~270 (65) av	3287
L_90~270 (75) av	3246
L_90~270 (85) av	3434
L_45 (65) av	3299
L_45 (75) av	3266
L_45 (85) av	3555

Standard: GB/T 29293-2012

C Range: 0 - 360DEG
C Interval: 30.0DEG
Test Speed: HIGH
Temperature:25.3℃
Operators:
Test Date:2025-03-11

γ Range: 0 - 180DEG
γ Interval: 1.0DEG
Test System:EVERFINE GO-2000B_V1 SYSTEM V2.00.488
Humidity:65.0%
Test Distance:6.360m [K=1.0000]
Remarks:

Planar Illuminance Curve



C Range: 0 - 360DEG
C Interval: 30.0DEG
Test Speed: HIGH
Temperature: 25.3 °C
Operators:
Test Date: 2025-03-11

γ Range: 0 - 180DEG
 γ Interval: 1.0DEG
Test System: EVERFINE GO-2000B_V1 SYSTEM V2.00.488
Humidity: 65.0%
Test Distance: 6.360m [K=1.0000]
Remarks:

LUMINOUS DISTRIBUTION INTENSITY DATA

Test:U:24.00V I:0.4383A P:10.52W PF:1.000 Freq:0Hz Lamp Flux:188.378x1 lm											
NAME: SF16-24V-5050-70-SPI-RGBW(4000K)-W						TYPE:			WEIGHT:		
SPEC.:						DIM.: Length=1m			SERIAL No.:		
MFR.: OLYMPIA lighting						SUR.:			Shielding Angle:		

Table--1

UNIT: cd

C (DEG) γ (DEG)	0	30	60	90	120	150	180	210	240	270	300	330							
0	61.7	61.7	61.7	61.7	61.7	61.7	61.7	61.7	61.7	61.7	61.7	61.7							
5	61.4	61.4	61.4	61.4	61.4	61.4	61.4	61.4	61.4	61.5	61.5	61.5							
10	60.6	60.6	60.5	60.5	60.5	60.5	60.5	60.5	60.6	60.6	60.7	60.7							
15	59.1	59.2	59.1	59.1	59.0	59.0	59.0	59.1	59.2	59.2	59.3	59.3							
20	57.1	57.2	57.1	57.1	57.0	57.0	57.1	57.1	57.2	57.2	57.3	57.3							
25	54.6	54.7	54.6	54.5	54.5	54.5	54.6	54.6	54.7	54.8	54.9	54.8							
30	51.7	51.7	51.6	51.5	51.5	51.5	51.6	51.7	51.8	51.9	52.0	52.0							
35	48.4	48.4	48.2	48.1	48.1	48.1	48.2	48.4	48.4	48.5	48.6	48.6							
40	44.7	44.6	44.5	44.4	44.4	44.4	44.5	44.6	44.7	44.8	45.0	45.0							
45	40.7	40.6	40.5	40.3	40.3	40.4	40.5	40.6	40.8	40.8	41.0	41.0							
50	36.4	36.4	36.2	36.1	36.1	36.2	36.3	36.4	36.5	36.6	36.8	36.7							
55	32.1	32.0	31.8	31.7	31.7	31.8	32.0	32.0	32.1	32.2	32.4	32.4							
60	27.6	27.5	27.3	27.2	27.2	27.3	27.5	27.5	27.7	27.7	27.9	27.9							
65	23.0	23.0	22.8	22.7	22.6	22.8	23.0	23.0	23.1	23.2	23.4	23.3							
70	18.5	18.4	18.3	18.1	18.1	18.2	18.4	18.5	18.6	18.6	18.8	18.8							
75	14.0	14.0	13.7	13.6	13.6	13.7	13.9	14.0	14.1	14.1	14.3	14.2							
80	9.52	9.53	9.28	9.18	9.13	9.28	9.49	9.52	9.58	9.58	9.76	9.79							
85	5.36	5.22	4.90	4.76	4.73	4.99	5.22	5.16	5.16	5.12	5.34	5.41							
90	2.39	2.25	1.58	0.99	1.57	2.17	2.39	2.21	1.76	1.06	1.82	2.31							
95	0.85	0.92	0.98	1.01	0.99	0.91	0.84	0.87	0.99	1.03	0.98	0.86							
100	0.84	0.94	0.99	1.03	1.01	0.94	0.75	0.85	1.03	1.07	1.02	0.85							
105	0.87	0.97	1.03	1.04	1.05	0.98	0.79	0.88	1.07	1.12	1.06	0.87							
110	0.92	1.02	1.06	1.05	1.09	1.04	0.85	0.93	1.12	1.16	1.10	0.91							
115	0.97	1.06	1.10	1.06	1.13	1.09	0.90	0.97	1.16	1.19	1.14	0.95							
120	1.02	1.11	1.14	1.09	1.17	1.14	0.95	1.01	1.19	1.22	1.16	1.00							
125	1.07	1.15	1.18	1.15	1.21	1.18	1.00	1.05	1.22	1.24	1.19	1.04							
130	1.12	1.19	1.22	1.21	1.24	1.22	1.06	1.10	1.25	1.26	1.22	1.05							
135	1.17	1.23	1.26	1.25	1.28	1.26	1.10	1.14	1.27	1.28	1.24	1.09							
140	1.21	1.28	1.30	1.28	1.32	1.30	1.14	1.18	1.30	1.31	1.27	1.13							
145	1.26	1.32	1.33	1.34	1.35	1.34	1.18	1.23	1.33	1.33	1.29	1.17							
150	1.30	1.35	1.38	1.41	1.38	1.38	1.22	1.27	1.36	1.35	1.32	1.21							
155	1.35	1.38	1.40	1.45	1.42	1.42	1.31	1.31	1.39	1.38	1.36	1.26							
160	1.39	1.42	1.42	1.48	1.45	1.45	1.37	1.34	1.41	1.40	1.39	1.30							
165	1.43	1.46	1.43	1.50	1.47	1.48	1.42	1.38	1.44	1.43	1.42	1.35							
170	1.46	1.49	1.44	1.51	1.49	1.51	1.46	1.44	1.48	1.46	1.47	1.44							
175	1.48	1.50	1.48	1.51	1.51	1.51	1.49	1.47	1.50	1.49	1.51	1.47							
180	1.50	1.50	1.51	1.52	1.51	1.51	1.49	1.50	1.51	1.52	1.52	1.51							

C Range: 0 - 360DEG

C Interval: 30.0DEG

Test Speed: HIGH

Temperature:25.3℃

Operators:

Test Date:2025-03-11

γ Range: 0 - 180DEG

γ Interval: 1.0DEG

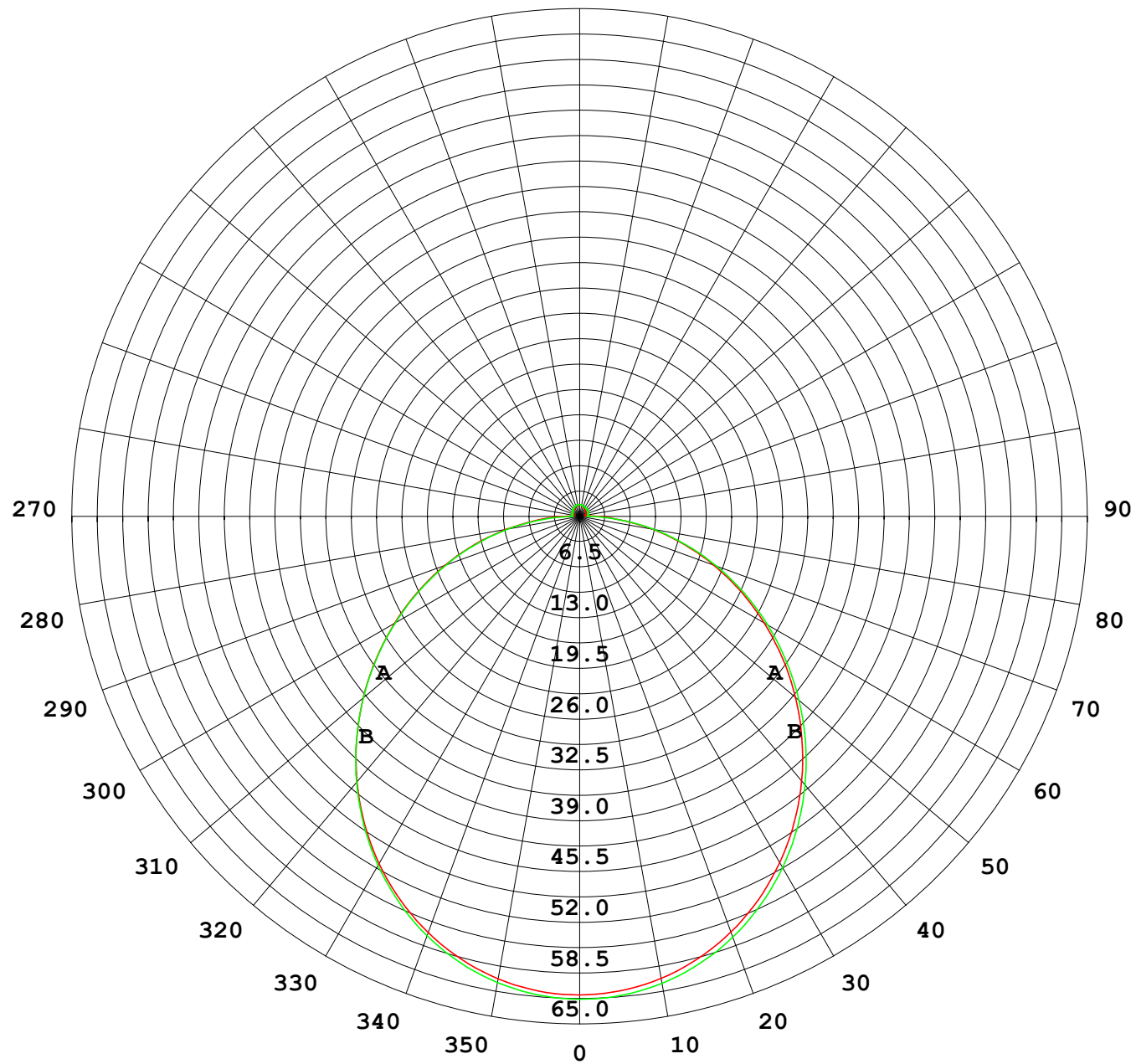
Test System:EVERFINE GO-2000B_V1 SYSTEM V2.00.488

Humidity:65.0%

Test Distance:6.360m [K=1.0000]

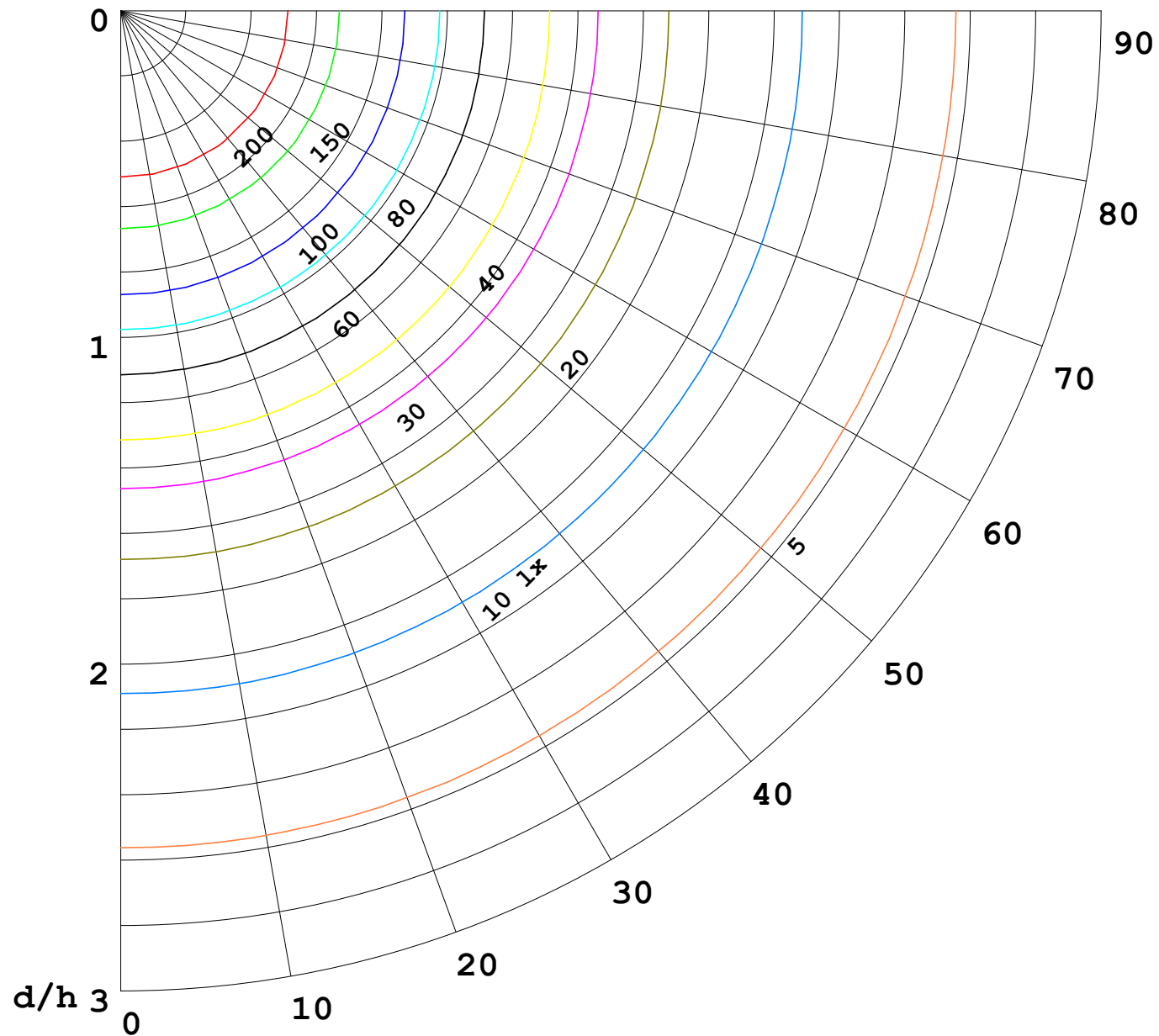
Remarks:

I (cd)



1000 lm

$\kappa = 1$



F = 1000 lm
 K = 0.7
 Hcc = 0.8 m
 Hfc = 0.0 m
 Eave = 100 lx

	Pcc	Pw	Pfc
————	70	50	30
————	50	30	20

