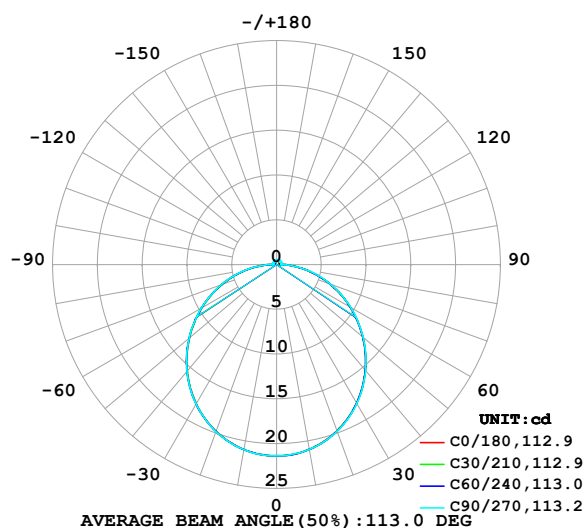


## LUMINAIRE PHOTOMETRIC TEST REPORT

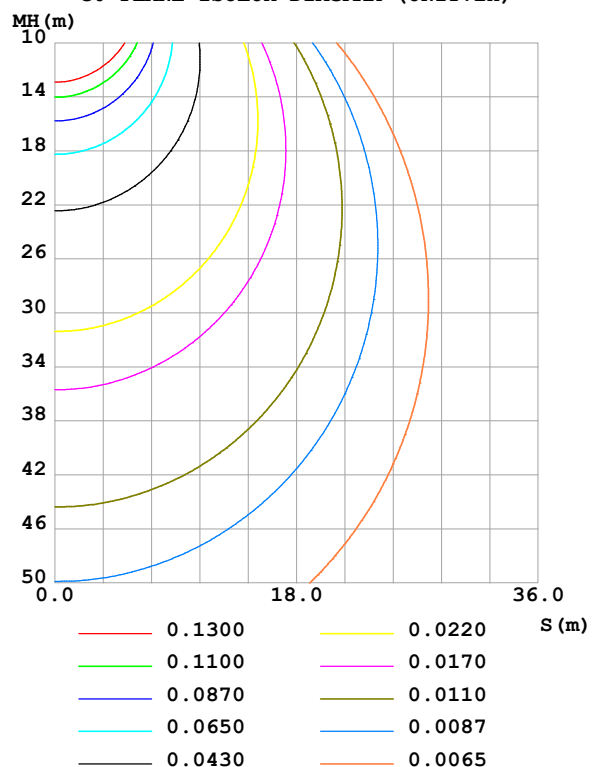
Test:U:24.00V I:0.4577A P:10.98W PF:1.000 Freq:0Hz Lamp Flux:65.8061x1 lm		
NAME: SF16-24V-5050-70-SPI-RGBW(3000K)-R	TYPE:	WEIGHT:
SPEC.:	DIM.: Length=1m	SERIAL No.:
MFR.: OLympia lighting	SUR.:	Shielding Angle:

DATA OF LAMP		PHOTOMETRIC DATA				Eff: 5.99 lm/W
MODEL	5050	Imax (cd)	21.36	S/MH(C0/180)	1.25	
NOMINAL POWER(W)		LOR(%)	100.0	S/MH(C90/270)	1.25	
RATED VOLTAGE(V)	24	TOTAL FLUX(lm)	65.806	$\eta$ UP,DN(C0-180)	2.2,47.7	
NOMINAL FLUX(lm)	65.8061	CIE CLASS	DIRECT	$\eta$ UP,DN(C180-360)	1.9,48.1	
LAMPS INSIDE	1	$\eta$ up (%)	4.2	CIBSE SHR NOM	1.25	
TEST VOLTAGE(V)		$\eta$ down (%)	95.8	CIBSE SHR MAX	1.35	

LUMINOUS INTENSITY DISTRIBUTION DIAGRAM



C0 PLANE ISOLUX DIAGRAM (UNIT:lx)



C Range: 0 - 360DEG  
C Interval: 30.0DEG  
Test Speed: HIGH  
Temperature:25.3℃  
Operators:  
Test Date:2025-03-17

$\gamma$  Range: 0 - 180DEG  
 $\gamma$  Interval: 1.0DEG  
Test System:EVERFINE GO-2000B\_V1 SYSTEM V2.00.488  
Humidity:65.0%  
Test Distance:6.360m [K=1.0000]  
Remarks:

## ZONAL FLUX DIAGRAM

## ZONAL FLUX DIAGRAM:

$\gamma$	C0	C45	C90	C135	C180	C225	C270	C315	$\gamma$	$\Phi$ zone	$\Phi$ total	%lum, lamp
10	20.95	20.96	20.96	20.97	20.97	20.98	20.99	20.98	0- 10	2.021	2.021	3.07,3.07
20	19.74	19.78	19.79	19.81	19.81	19.83	19.84	19.81	10- 20	5.779	7.799	11.9,11.9
30	17.86	17.89	17.92	17.95	17.96	17.98	17.99	17.96	20- 30	8.732	16.53	25.1,25.1
40	15.41	15.43	15.45	15.51	15.55	15.56	15.57	15.54	30- 40	10.50	27.03	41.1,41.1
50	12.57	12.57	12.60	12.67	12.72	12.73	12.76	12.70	40- 50	10.90	37.93	57.6,57.6
60	9.493	9.500	9.540	9.590	9.660	9.664	9.701	9.634	50- 60	9.969	47.89	72.8,72.8
70	6.342	6.349	6.414	6.446	6.515	6.502	6.558	6.476	60- 70	7.944	55.84	84.9,84.9
80	3.220	3.224	3.312	3.329	3.398	3.373	3.441	3.336	70- 80	5.151	60.99	92.7,92.7
90	0.9240	0.7591	0.4954	0.7983	0.9803	0.7862	0.5085	0.7732	80- 90	2.081	63.07	95.8,95.8
100	0.2960	0.3924	0.5187	0.3918	0.2676	0.3206	0.4693	0.3190	90-100	0.4821	63.55	96.6,96.6
110	0.3216	0.4269	0.5302	0.4282	0.3103	0.3450	0.4867	0.3350	100-110	0.4014	63.95	97.2,97.2
120	0.3615	0.4499	0.5302	0.4529	0.3501	0.3665	0.4810	0.3553	110-120	0.4008	64.35	97.8,97.8
130	0.4013	0.4715	0.5302	0.4747	0.3872	0.3910	0.4346	0.3801	120-130	0.3795	64.73	98.4,98.4
140	0.4383	0.4987	0.5446	0.4952	0.4327	0.4226	0.4230	0.4005	130-140	0.3430	65.08	98.9,98.9
150	0.4725	0.5175	0.5562	0.5184	0.4698	0.4657	0.4403	0.4398	140-150	0.2954	65.37	99.3,99.3
160	0.5095	0.5376	0.5562	0.5301	0.5152	0.5059	0.4838	0.4908	150-160	0.2314	65.60	99.7,99.7
170	0.5380	0.5491	0.5562	0.5447	0.5465	0.5376	0.5301	0.5417	160-170	0.1501	65.75	99.9,99.9
180	0.5494	0.5520	0.5562	0.5534	0.5494	0.5505	0.5533	0.5505	170-180	0.0522	65.81	100,100
DEG	LUMINOUS INTENSITY:cd									UNIT:lm		

Conical surface Flux(90deg): 32.515 lm

%lum = 49.4%

%lamp = 49.4%

Conical surface Flux(130deg): 52.177 lm

%lum = 79.3%

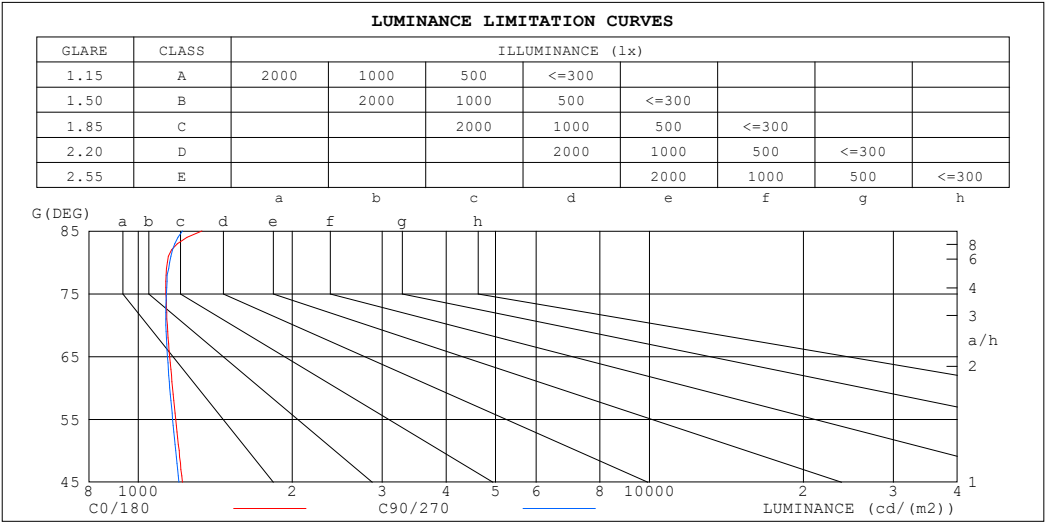
%lamp = 79.3%

C Range: 0 - 360DEG  
 C Interval: 30.0DEG  
 Test Speed: HIGH  
 Temperature:25.3℃  
 Operators:  
 Test Date:2025-03-17

$\gamma$  Range: 0 - 180DEG  
 $\gamma$  Interval: 1.0DEG  
 Test System:EVERFINE GO-2000B\_V1 SYSTEM V2.00.488  
 Humidity:65.0%  
 Test Distance:6.360m [K=1.0000]  
 Remarks:

LUMINANCE LIMITATION CURVES

Test:U:24.00V I:0.4577A P:10.98W PF:1.000 Freq:0Hz Lamp Flux:65.8061x1 lm		
NAME: SF16-24V-5050-70-SPI-RGBW(3000K)-R	TYPE:	WEIGHT:
SPEC.:	DIM.: Length=1m	SERIAL No.:
MFR.: OLYMPIA lighting	SUR.:	Shielding Angle:



LUMINANCE cd/(m2)		
G (DEG)	C0/180	C90/270
85	1333	1220
80	1139	1151
75	1132	1135
70	1140	1132
65	1151	1139
60	1167	1152
55	1183	1167
50	1202	1183
45	1219	1201

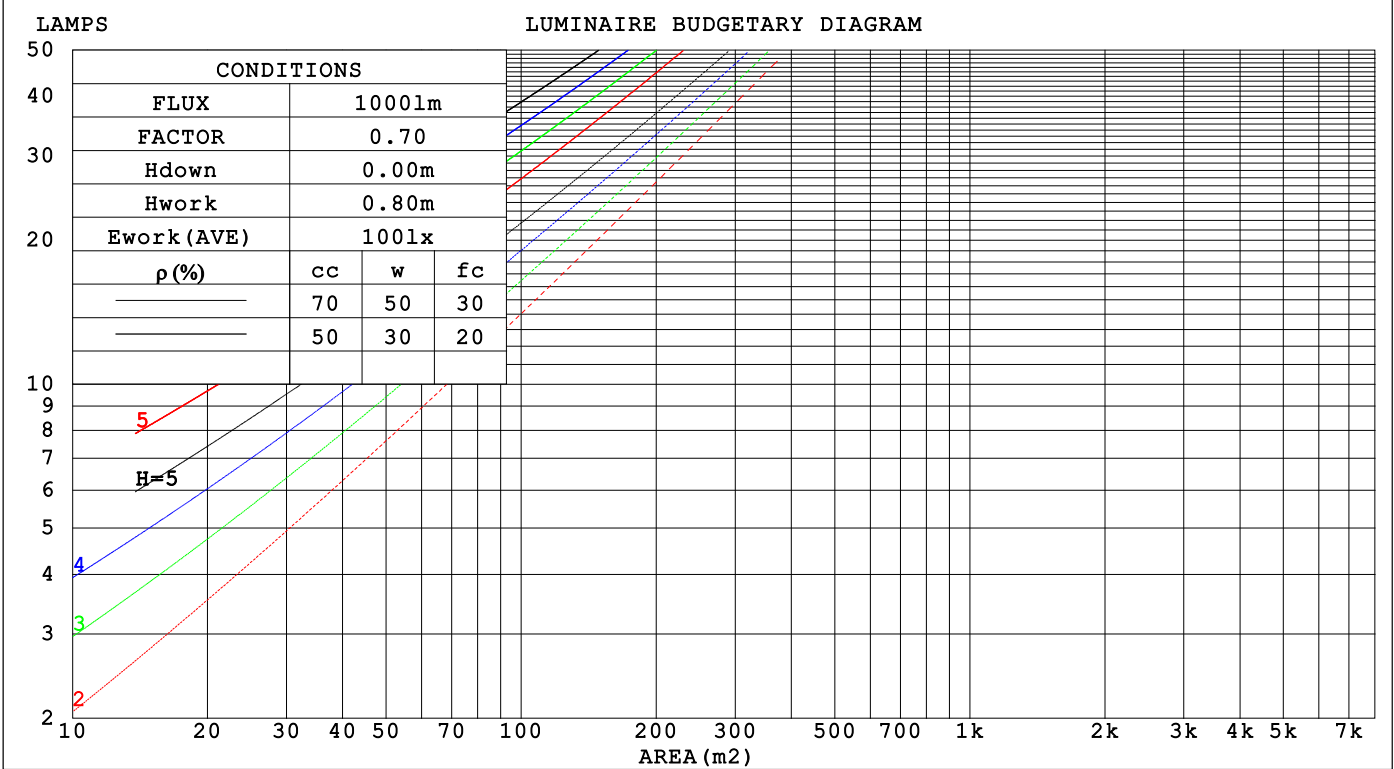
C Range: 0 - 360DEG  
C Interval: 30.0DEG  
Test Speed: HIGH  
Temperature:25.3℃  
Operators:  
Test Date:2025-03-17

γ Range: 0 - 180DEG  
γ Interval: 1.0DEG  
Test System:EVERFINE GO-2000B\_V1 SYSTEM V2.00.488  
Humidity:65.0%  
Test Distance:6.360m [K=1.0000]  
Remarks:

CU AND LUMINAIRE BUDGETARY ESTIMATE DIAGRAM

Test:U:24.00V I:0.4577A P:10.98W PF:1.000 Freq:0Hz		
Lamp Flux:65.8061x1 lm		
NAME: SF16-24V-5050-70-SPI-RGBW(3000K)-R	TYPE:	WEIGHT:
SPEC.:	DIM.: Length=1m	SERIAL No.:
MFR.: OLYMPIA lighting	SUR.:	Shielding Angle:

pcc	80%			70%			50%			30%			10%			0
p <sub>w</sub>	50%	30%	10%	50%	30%	10%	50%	30%	10%	50%	30%	10%	50%	30%	10%	0
p <sub>fc</sub>	20%			20%			20%			20%			20%			0
RCR	RCR:Room Cavity Ratio															



C Range: 0 - 360DEG  
C Interval: 30.0DEG  
Test Speed: HIGH  
Temperature:25.3℃  
Operators:  
Test Date:2025-03-17

γ Range: 0 - 180DEG  
γ Interval: 1.0DEG  
Test System:EVERFINE GO-2000B\_V1 SYSTEM V2.00.488  
Humidity:65.0%  
Test Distance:6.360m [K=1.0000]  
Remarks:

## WEC AND CCEC

Test:U:24.00V I:0.4577A P:10.98W PF:1.000 Freq:0Hz Lamp Flux:65.8061x1 lm		
NAME: SF16-24V-5050-70-SPI-RGBW(3000K)-R	TYPE:	WEIGHT:
SPEC.:	DIM.: Length=1m	SERIAL No.:
MFR.: OLYMPIA lighting	SUR.:	Shielding Angle:

pcc	80%			70%			50%			30%			10%			0														
pw	50%	30%	10%	50%	30%	10%	50%	30%	10%	50%	30%	10%	50%	30%	10%	0														
pfc	20%			20%			20%			20%			20%			0														
RCR	RCR:Room Cavity Ratio															Wall Exitance Coefficients(WEC)														
0.0																														
1.0	.328	.186	.059	.319	.182	.058	.304	.174	.056	.289	.167	.054	.276	.160	.052															
2.0	.302	.165	.051	.294	.162	.050	.280	.156	.048	.267	.150	.047	.256	.145	.046															
3.0	.276	.147	.044	.270	.144	.043	.257	.139	.042	.246	.135	.041	.235	.130	.040															
4.0	.253	.132	.039	.247	.129	.038	.236	.125	.037	.226	.121	.037	.216	.118	.036															
5.0	.233	.119	.034	.228	.117	.034	.218	.113	.033	.209	.110	.033	.200	.107	.032															
6.0	.215	.108	.031	.211	.106	.031	.202	.103	.030	.193	.101	.030	.186	.098	.029															
7.0	.200	.099	.028	.196	.098	.028	.188	.095	.027	.180	.092	.027	.173	.090	.026															
8.0	.187	.091	.026	.183	.090	.025	.175	.088	.025	.169	.085	.025	.162	.083	.024															
9.0	.175	.084	.024	.171	.083	.023	.165	.081	.023	.158	.079	.023	.152	.077	.022															
10.0	.164	.079	.022	.161	.078	.022	.155	.076	.021	.149	.074	.021	.144	.072	.021															

pcc	80%			70%			50%			30%			10%			0
pw	50%	30%	10%	50%	30%	10%	50%	30%	10%	50%	30%	10%	50%	30%	10%	0
pfc	20%			20%			20%			20%			20%			0
RCR	RCR:Room Cavity Ratio						Ceiling Cavity Exitance Coefficients (CCEC)									
0.0	.222	.222	.222	.190	.190	.190	.130	.130	.130	.074	.074	.074	.024	.024	.024	
1.0	.213	.188	.165	.183	.161	.142	.125	.111	.098	.072	.064	.057	.023	.021	.018	
2.0	.206	.164	.129	.176	.141	.111	.121	.098	.078	.070	.057	.046	.022	.018	.015	
3.0	.198	.147	.106	.170	.127	.092	.117	.088	.064	.067	.051	.038	.022	.017	.012	
4.0	.190	.134	.090	.163	.115	.078	.112	.080	.055	.065	.047	.033	.021	.015	.011	
5.0	.183	.123	.079	.157	.107	.069	.108	.075	.049	.063	.044	.029	.020	.014	.010	
6.0	.176	.115	.072	.151	.100	.062	.104	.070	.044	.060	.041	.026	.019	.013	.009	
7.0	.169	.108	.066	.145	.094	.057	.100	.066	.041	.058	.039	.024	.019	.013	.008	
8.0	.162	.102	.061	.140	.089	.054	.097	.062	.038	.056	.037	.023	.018	.012	.007	
9.0	.156	.098	.058	.134	.085	.051	.093	.059	.036	.054	.035	.021	.018	.012	.007	
10.0	.150	.093	.055	.130	.081	.048	.090	.057	.034	.052	.034	.020	.017	.011	.007	

C Range: 0 - 360DEG  
C Interval: 30.0DEG  
Test Speed: HIGH  
Temperature:25.3℃  
Operators:  
Test Date:2025-03-17

γ Range: 0 - 180DEG  
γ Interval: 1.0DEG  
Test System:EVERFINE GO-2000B\_V1 SYSTEM V2.00.488  
Humidity:65.0%  
Test Distance:6.360m [K=1.0000]  
Remarks:

UGR(Unified Glare Rating) Table

Test:U:24.00V I:0.4577A P:10.98W PF:1.000 Freq:0Hz Lamp Flux:65.8061x1 lm										
NAME: SF16-24V-5050-70-SPI-RGBW(3000K)-R					TYPE:			WEIGHT:		
SPEC.:					DIM.: Length=1m			SERIAL No.:		
MFR.: OLympia lighting					SUR.:			Shielding Angle:		
ceiling/cavity	0.7	0.7	0.5	0.5	0.3	0.7	0.7	0.5	0.5	0.3
walls	0.5	0.3	0.5	0.3	0.3	0.5	0.3	0.5	0.3	0.3
working plane	0.2	0.2	0.2	0.2	0.2	0.2	0.2	0.2	0.2	0.2
Room dimensions	Viewed crosswise					Viewed endwise				
x = 2H y = 2H	22.7	24.2	23.1	24.5	24.8	22.7	24.2	23.0	24.4	24.7
3H	24.4	25.8	24.8	26.1	26.4	24.4	25.7	24.7	26.0	26.4
4H	25.2	26.5	25.5	26.8	27.2	25.1	26.4	25.5	26.8	27.1
6H	25.8	27.0	26.2	27.4	27.7	25.8	27.0	26.2	27.3	27.7
8H	26.0	27.2	26.4	27.6	28.0	26.0	27.2	26.4	27.6	27.9
12H	26.3	27.4	26.7	27.8	28.2	26.2	27.4	26.6	27.7	28.1
4H 2H	23.4	24.7	23.7	25.0	25.3	23.3	24.6	23.7	24.9	25.3
3H	25.3	26.4	25.7	26.8	27.2	25.2	26.3	25.6	26.7	27.1
4H	26.1	27.2	26.6	27.6	28.0	26.1	27.1	26.5	27.5	28.0
6H	26.9	27.8	27.4	28.3	28.7	26.9	27.8	27.3	28.2	28.7
8H	27.2	28.1	27.7	28.5	29.0	27.2	28.1	27.7	28.5	29.0
12H	27.5	28.3	28.0	28.8	29.3	27.5	28.3	28.0	28.7	29.2
8H 4H	26.5	27.3	26.9	27.8	28.3	26.4	27.3	26.9	27.7	28.2
6H	27.4	28.2	27.9	28.6	29.1	27.4	28.1	27.9	28.6	29.1
8H	27.9	28.5	28.4	29.0	29.5	27.8	28.5	28.4	29.0	29.5
12H	28.3	28.8	28.8	29.4	29.9	28.2	28.8	28.8	29.3	29.9
12H 4H	26.5	27.3	27.0	27.8	28.3	26.5	27.3	26.9	27.7	28.2
6H	27.5	28.2	28.0	28.7	29.2	27.5	28.1	28.0	28.6	29.2
8H	28.0	28.6	28.6	29.1	29.7	28.0	28.5	28.5	29.1	29.6
Variations with the observer position at spacings(CIE Pub.117):										
S = 1.0H	+ 0.1 / - 0.2					+ 0.1 / - 0.2				
1.5H	+ 0.2 / - 0.3					+ 0.2 / - 0.3				
2.0H	+ 0.1 / - 0.3					+ 0.1 / - 0.3				

CIE Pub.117, 65.81 lm Total Lamp Luminous Flux Correct (8log(F/F0) = -9.5)  
Area: 0.0165 m2

C Range: 0 - 360DEG  
C Interval: 30.0DEG  
Test Speed: HIGH  
Temperature:25.3℃  
Operators:  
Test Date:2025-03-17

γ Range: 0 - 180DEG  
γ Interval: 1.0DEG  
Test System:EVERFINE GO-2000B\_V1 SYSTEM V2.00.488  
Humidity:65.0%  
Test Distance:6.360m [K=1.0000]  
Remarks:

## UTILIZATION FACTORS TABLE

Test:U:24.00V I:0.4577A P:10.98W PF:1.000 Freq:0Hz Lamp Flux:65.8061x1 lm		
NAME: SF16-24V-5050-70-SPI-RGBW(3000K)-R	TYPE:	WEIGHT:
SPEC.:	DIM.: Length=1m	SERIAL No.:
MFR.: OLympia lighting	SUR.:	Shielding Angle:

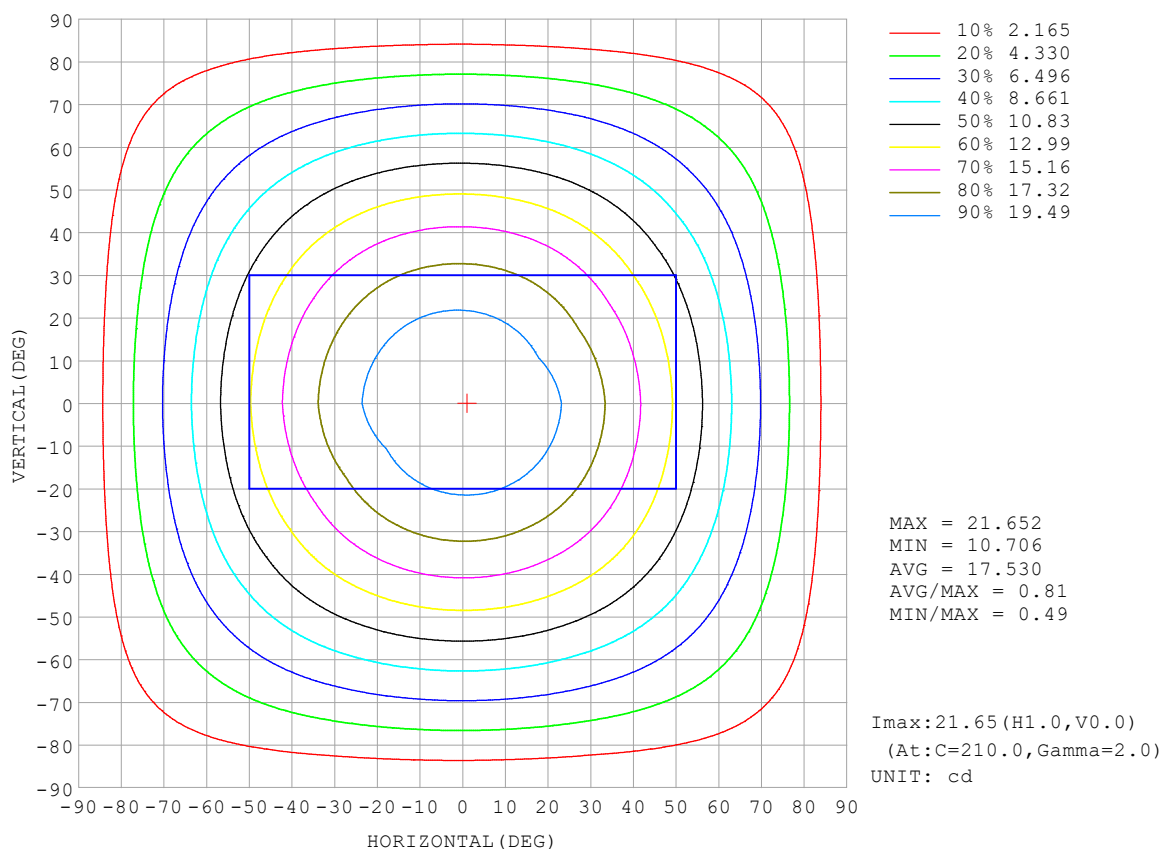
REFLECTANCE										
Ceiling	0.8	0.8	0.8	0.7	0.7	0.7	0.5	0.5	0.5	0
Walls	0.7	0.5	0.3	0.7	0.5	0.3	0.7	0.5	0.3	0
Working plane	0.2	0.2	0.2	0.2	0.2	0.2	0.2	0.2	0.2	0
ROOM INDEX	UTILIZATION FACTORS (PERCENT) $k(RI) \times RCR = 5$									
$k = 0.60$	55	44	37	55	43	37	53	43	36	30
0.80	65	53	46	64	53	46	62	52	45	38
1.00	73	62	54	72	61	54	69	62	53	46
1.25	81	70	62	79	69	62	76	67	61	53
1.50	86	75	68	84	74	67	80	72	66	57
2.00	92	83	77	90	82	76	86	79	74	65
2.50	97	88	82	94	87	81	90	83	78	69
3.00	100	93	87	97	91	85	93	87	83	73
4.00	104	98	93	101	96	91	96	92	88	78
5.00	107	101	97	104	99	95	99	95	91	81
ROOM INDEX	UF (total)									Direct
According to DIN EN 13032-2 2004			Suspended					SHRNOM = 1.25		

C Range: 0 - 360DEG  
 C Interval: 30.0DEG  
 Test Speed: HIGH  
 Temperature: 25.3 °C  
 Operators:  
 Test Date: 2025-03-17

γ Range: 0 - 180DEG  
 γ Interval: 1.0DEG  
 Test System: EVERFINE GO-2000B\_V1 SYSTEM V2.00.488  
 Humidity: 65.0%  
 Test Distance: 6.360m [K=1.0000]  
 Remarks:

## ISOCANDELA DIAGRAM

Test:U:24.00V I:0.4577A P:10.98W PF:1.000 Freq:0Hz Lamp Flux:65.8061x1 lm		
NAME: SF16-24V-5050-70-SPI-RGBW(3000K)-R	TYPE:	WEIGHT:
SPEC.:	DIM.: Length=1m	SERIAL No.:
MFR.: OLympia lighting	SUR.:	Shielding Angle:



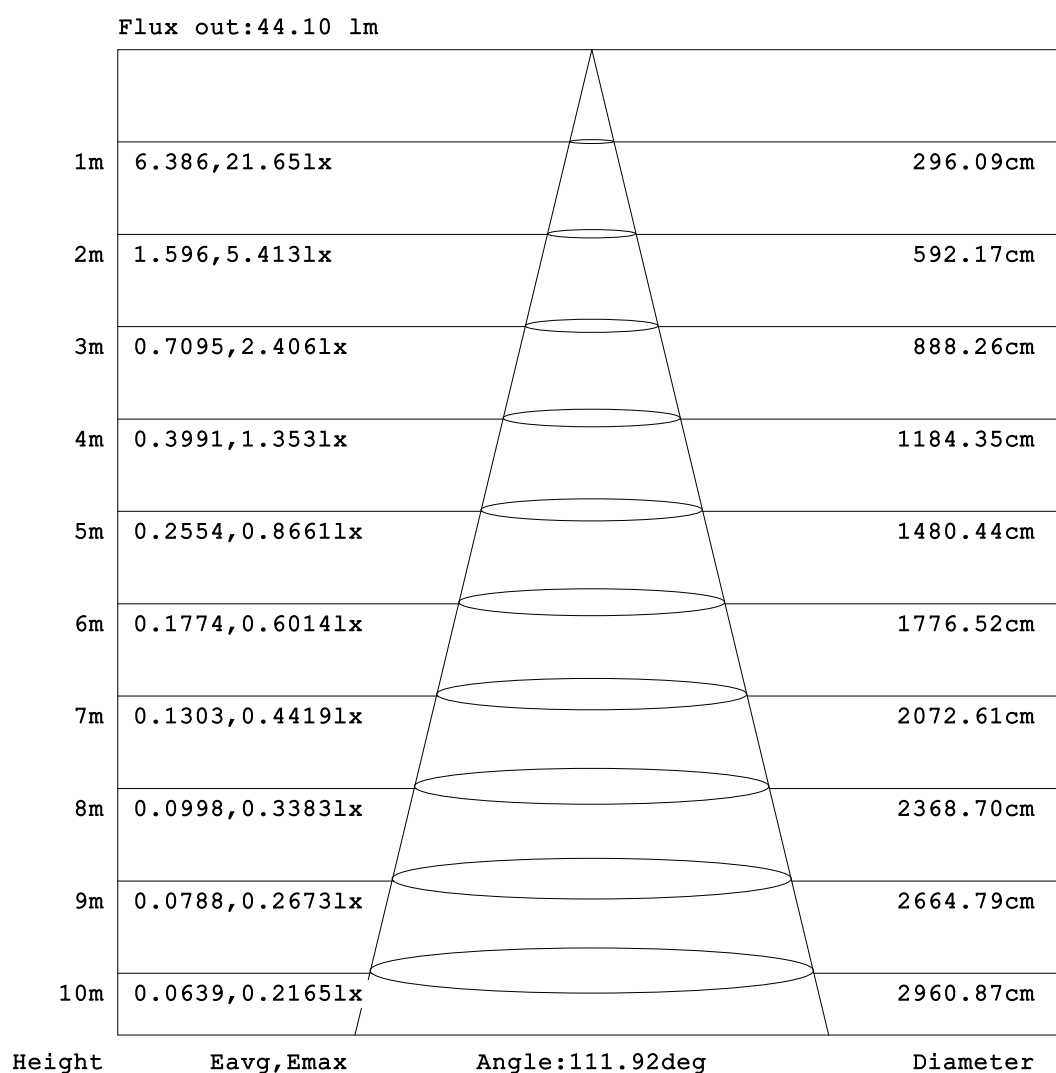
C Range: 0 - 360DEG  
C Interval: 30.0DEG  
Test Speed: HIGH  
Temperature:25.3℃  
Operators:  
Test Date:2025-03-17

γ Range: 0 - 180DEG  
γ Interval: 1.0DEG  
Test System:EVERFINE GO-2000B\_V1 SYSTEM V2.00.488  
Humidity:65.0%  
Test Distance:6.360m [K=1.0000]  
Remarks:



## AAI Figure

Test:U:24.00V I:0.4577A P:10.98W PF:1.000 Freq:0Hz Lamp Flux:65.8061lx1 lm		
NAME: SF16-24V-5050-70-SPI-RGBW(3000K)-R	TYPE:	WEIGHT:
SPEC.:	DIM.: Length=1m	SERIAL No.:
MFR.: OLympia lighting	SUR.:	Shielding Angle:



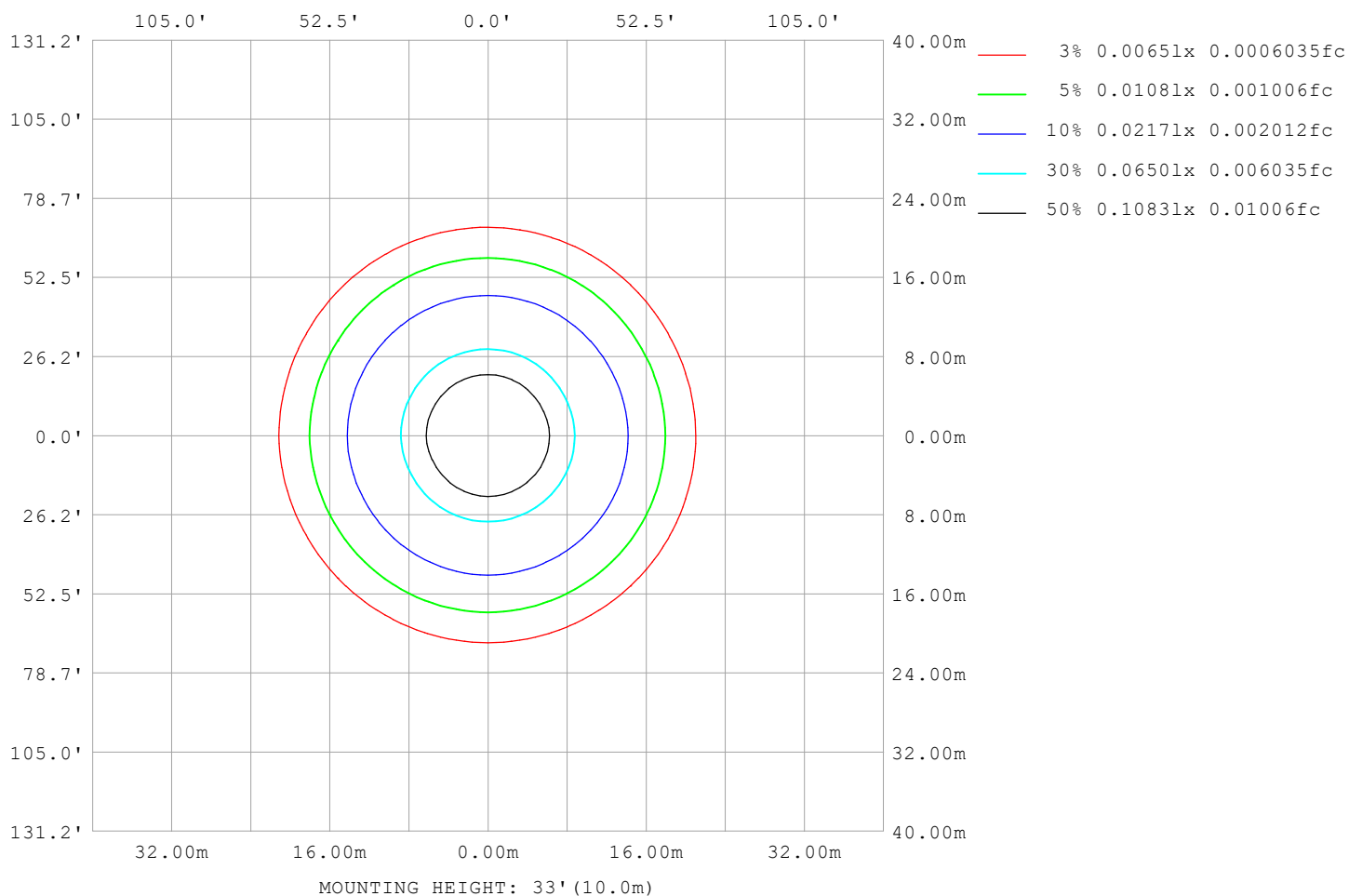
Note:The Curves indicate the illuminated area and the average illumination when the luminaire is at different distance.

C Range: 0 - 360DEG  
C Interval: 30.0DEG  
Test Speed: HIGH  
Temperature:25.3℃  
Operators:  
Test Date:2025-03-17

γ Range: 0 - 180DEG  
γ Interval: 1.0DEG  
Test System:EVERFINE GO-2000B\_V1 SYSTEM V2.00.488  
Humidity:65.0%  
Test Distance:6.360m [K=1.0000]  
Remarks:

## ISOLUX DIAGRAM

Test:U:24.00V I:0.4577A P:10.98W PF:1.000 Freq:0Hz Lamp Flux:65.8061x1 lm		
NAME: SF16-24V-5050-70-SPI-RGBW(3000K)-R	TYPE:	WEIGHT:
SPEC.:	DIM.: Length=1m	SERIAL No.:
MFR.: OLympia lighting	SUR.:	Shielding Angle:



C Range: 0 - 360DEG  
C Interval: 30.0DEG  
Test Speed: HIGH  
Temperature: 25.3°C  
Operators:  
Test Date: 2025-03-17

γ Range: 0 - 180DEG  
γ Interval: 1.0DEG  
Test System: EVERFINE GO-2000B\_V1 SYSTEM V2.00.488  
Humidity: 65.0%  
Test Distance: 6.360m [K=1.0000]  
Remarks:

## LED Avg.L Report

Test:U:24.00V I:0.4577A P:10.98W PF:1.000 Freq:0Hz Lamp Flux:65.8061x1 lm		
NAME: SF16-24V-5050-70-SPI-RGBW(3000K)-R	TYPE:	WEIGHT:
SPEC.:	DIM.: Length=1m	SERIAL No.:
MFR.: OLympia lighting	SUR.:	Shielding Angle:

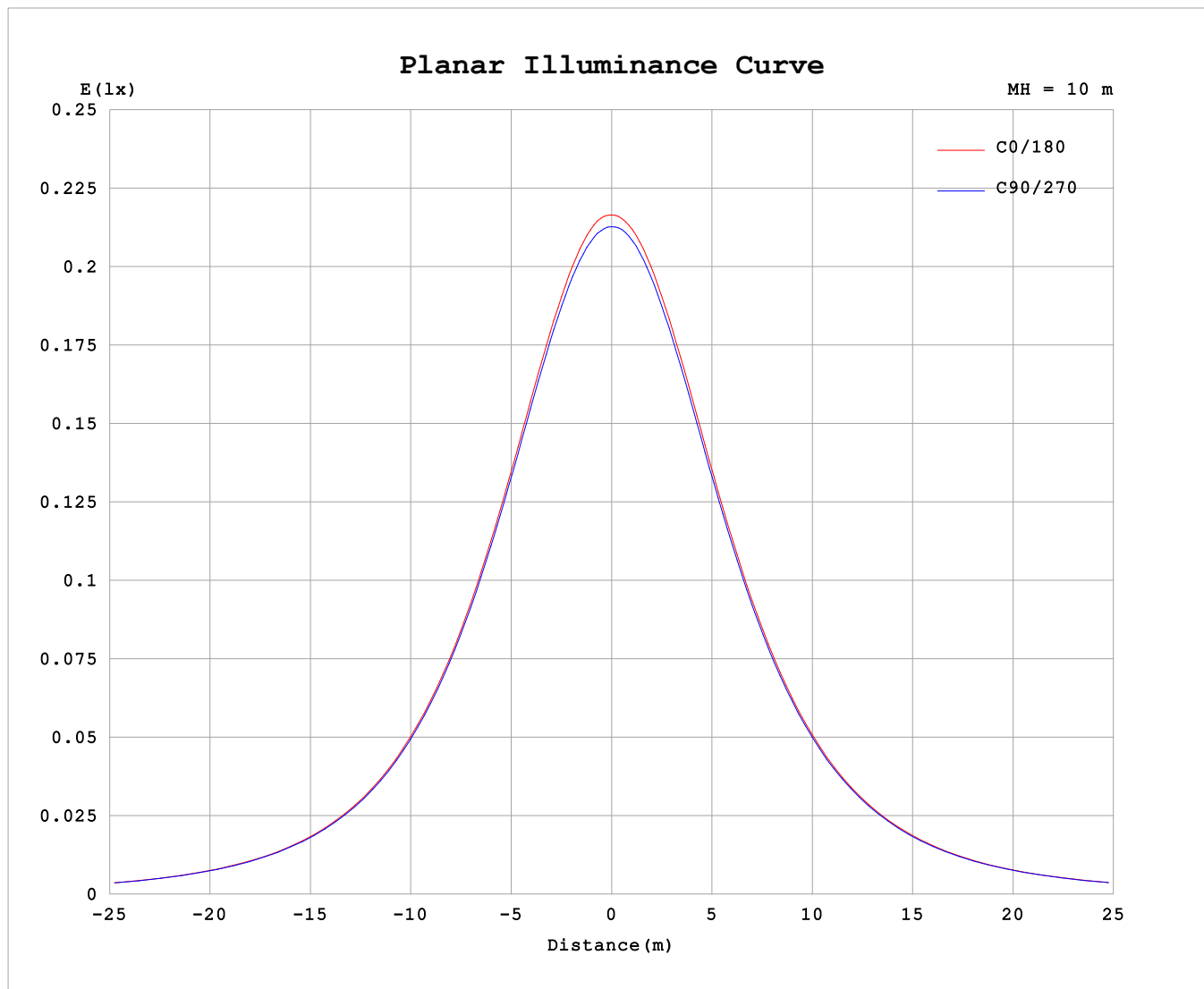
AvgL	cd/m2
L_0~180 (65) av	1148
L_0~180 (75) av	1138
L_0~180 (85) av	1342
L_90~270 (65) av	1155
L_90~270 (75) av	1154
L_90~270 (85) av	1270
L_45 (65) av	1150
L_45 (75) av	1141
L_45 (85) av	1267

Standard: GB/T 29293-2012

C Range: 0 - 360DEG  
C Interval: 30.0DEG  
Test Speed: HIGH  
Temperature:25.3℃  
Operators:  
Test Date:2025-03-17

γ Range: 0 - 180DEG  
γ Interval: 1.0DEG  
Test System:EVERFINE GO-2000B\_V1 SYSTEM V2.00.488  
Humidity:65.0%  
Test Distance:6.360m [K=1.0000]  
Remarks:

## Planar Illuminance Curve



C Range: 0 - 360DEG  
C Interval: 30.0DEG  
Test Speed: HIGH  
Temperature: 25.3 °C  
Operators:  
Test Date: 2025-03-17

$\gamma$  Range: 0 - 180DEG  
 $\gamma$  Interval: 1.0DEG  
Test System: EVERFINE GO-2000B\_V1 SYSTEM V2.00.488  
Humidity: 65.0%  
Test Distance: 6.360m [K=1.0000]  
Remarks:

## LUMINOUS DISTRIBUTION INTENSITY DATA

Test:U:24.00V I:0.4577A P:10.98W PF:1.000 Freq:0Hz Lamp Flux:65.8061x1 lm											
NAME: SF16-24V-5050-70-SPI-RGBW(3000K)-R						TYPE:			WEIGHT:		
SPEC.:						DIM.: Length=1m			SERIAL No.:		
MFR.: OLympia lighting						SUR.:			Shielding Angle:		

Table--1

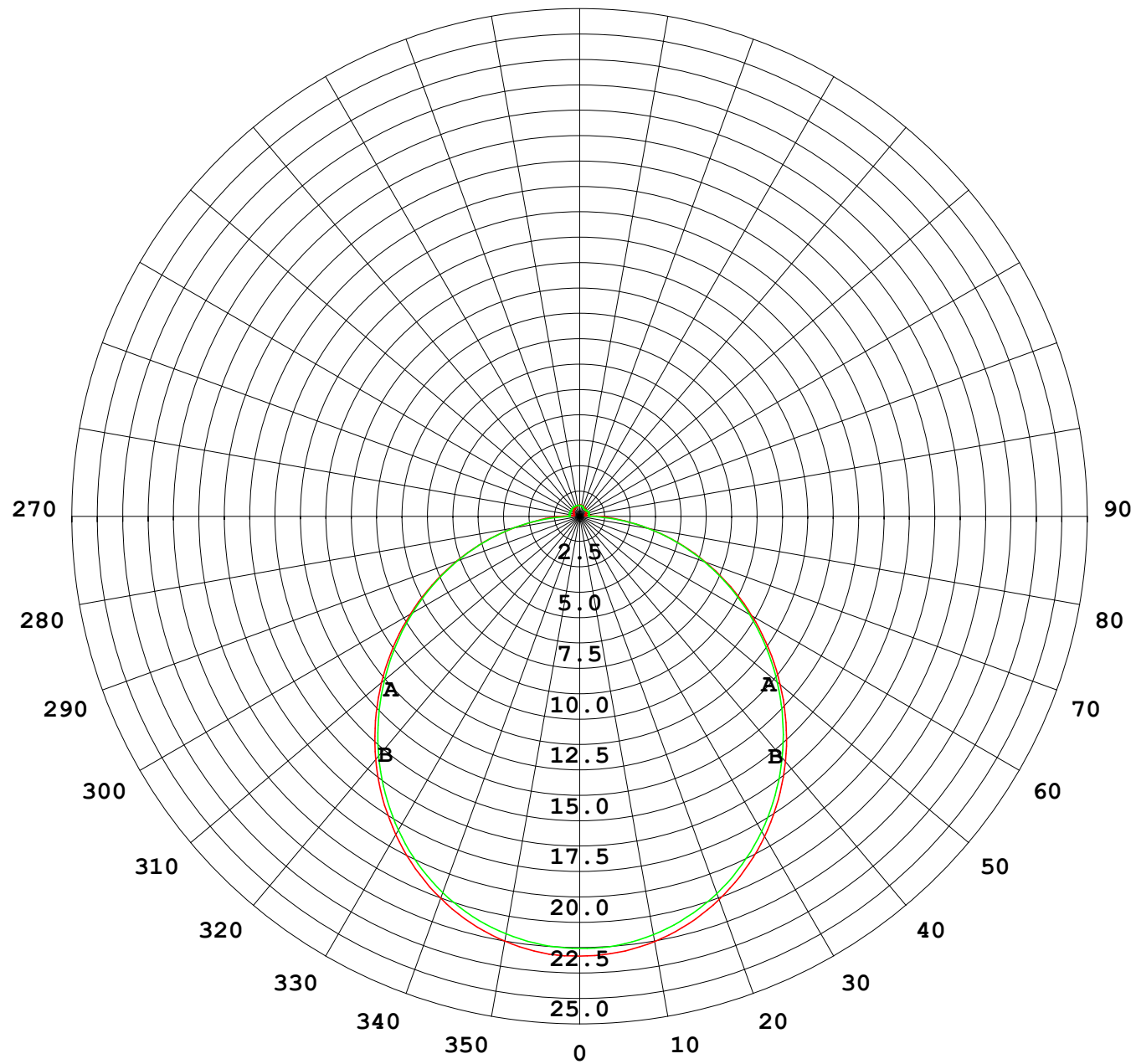
UNIT: cd

C (DEG) γ (DEG)	0	30	60	90	120	150	180	210	240	270	300	330							
0	21.4	21.4	21.4	21.4	21.4	21.4	21.4	21.4	21.4	21.4	21.4	21.4							
5	21.3	21.3	21.3	21.3	21.3	21.3	21.3	21.3	21.3	21.3	21.3	21.3							
10	21.0	21.0	21.0	21.0	21.0	21.0	21.0	21.0	21.0	21.0	21.0	21.0							
15	20.4	20.5	20.5	20.5	20.5	20.5	20.5	20.5	20.5	20.5	20.5	20.5							
20	19.7	19.8	19.8	19.8	19.8	19.8	19.8	19.8	19.8	19.8	19.8	19.8							
25	18.9	18.9	18.9	18.9	19.0	19.0	19.0	19.0	19.0	19.0	19.0	18.9							
30	17.9	17.9	17.9	17.9	17.9	18.0	18.0	18.0	18.0	18.0	18.0	17.9							
35	16.7	16.7	16.7	16.7	16.8	16.8	16.8	16.8	16.9	16.8	16.8	16.8							
40	15.4	15.4	15.4	15.5	15.5	15.5	15.5	15.5	15.6	15.6	15.6	15.5							
45	14.0	14.1	14.0	14.1	14.1	14.2	14.2	14.2	14.2	14.2	14.2	14.1							
50	12.6	12.6	12.5	12.6	12.6	12.7	12.7	12.7	12.8	12.8	12.8	12.7							
55	11.0	11.1	11.0	11.1	11.1	11.2	11.2	11.2	11.2	11.2	11.2	11.1							
60	9.49	9.52	9.48	9.54	9.55	9.63	9.66	9.63	9.70	9.70	9.68	9.59							
65	7.92	7.94	7.91	7.97	7.98	8.06	8.09	8.06	8.11	8.13	8.12	8.01							
70	6.34	6.36	6.34	6.41	6.41	6.48	6.51	6.48	6.53	6.56	6.53	6.43							
75	4.77	4.79	4.78	4.86	4.85	4.92	4.95	4.91	4.95	4.99	4.94	4.85							
80	3.22	3.23	3.22	3.31	3.29	3.37	3.40	3.35	3.39	3.44	3.38	3.29							
85	1.89	1.83	1.69	1.76	1.76	1.91	1.97	1.89	1.85	1.89	1.83	1.87							
90	0.92	0.86	0.66	0.50	0.69	0.91	0.98	0.89	0.68	0.51	0.68	0.86							
95	0.33	0.35	0.43	0.51	0.42	0.35	0.32	0.29	0.36	0.45	0.35	0.30							
100	0.30	0.36	0.43	0.52	0.42	0.36	0.27	0.27	0.37	0.47	0.37	0.27							
105	0.30	0.38	0.44	0.53	0.44	0.38	0.29	0.27	0.39	0.48	0.38	0.27							
110	0.32	0.40	0.46	0.53	0.46	0.40	0.31	0.30	0.40	0.49	0.38	0.29							
115	0.34	0.41	0.47	0.53	0.46	0.41	0.33	0.31	0.40	0.49	0.38	0.31							
120	0.36	0.43	0.47	0.53	0.48	0.43	0.35	0.33	0.40	0.48	0.38	0.33							
125	0.38	0.44	0.48	0.53	0.48	0.44	0.37	0.35	0.40	0.46	0.38	0.35							
130	0.40	0.46	0.48	0.53	0.49	0.46	0.39	0.37	0.41	0.43	0.39	0.37							
135	0.42	0.48	0.49	0.54	0.49	0.48	0.41	0.39	0.42	0.42	0.40	0.37							
140	0.44	0.49	0.51	0.54	0.50	0.49	0.43	0.41	0.43	0.42	0.41	0.39							
145	0.45	0.50	0.52	0.56	0.51	0.50	0.45	0.43	0.45	0.42	0.43	0.41							
150	0.47	0.51	0.52	0.56	0.53	0.51	0.47	0.46	0.48	0.44	0.45	0.43							
155	0.49	0.52	0.54	0.56	0.53	0.53	0.50	0.47	0.49	0.46	0.49	0.45							
160	0.51	0.54	0.54	0.56	0.53	0.53	0.52	0.49	0.52	0.48	0.51	0.47							
165	0.52	0.54	0.54	0.56	0.53	0.55	0.53	0.51	0.54	0.52	0.54	0.49							
170	0.54	0.55	0.54	0.56	0.54	0.55	0.55	0.52	0.55	0.53	0.55	0.53							
175	0.55	0.55	0.54	0.56	0.55	0.55	0.55	0.54	0.55	0.55	0.56	0.54							
180	0.55	0.55	0.55	0.56	0.55	0.55	0.55	0.55	0.55	0.55	0.56	0.55							

C Range: 0 - 360DEG  
C Interval: 30.0DEG  
Test Speed: HIGH  
Temperature:25.3℃  
Operators:  
Test Date:2025-03-17

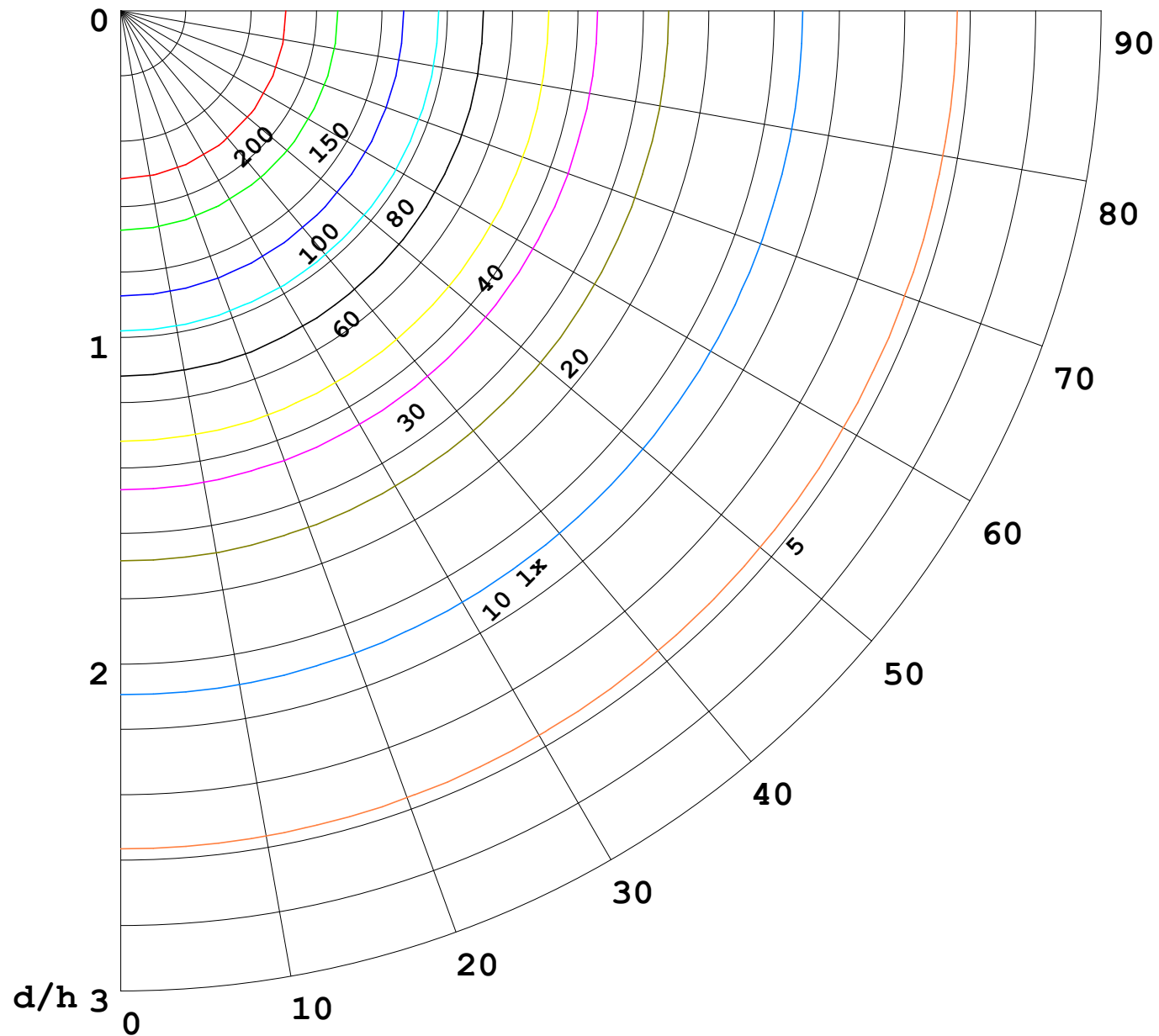
γ Range: 0 - 180DEG  
γ Interval: 1.0DEG  
Test System:EVERFINE GO-2000B\_V1 SYSTEM V2.00.488  
Humidity:65.0%  
Test Distance:6.360m [K=1.0000]  
Remarks:

I (cd)



1000 lm

$\kappa = 1$



F = 1000 lm  
 K = 0.7  
 Hcc = 0.8 m  
 Hfc = 0.0 m  
 Eave = 100 lx

	Pcc	Pw	Pfc
—————	70	50	30
—————	50	30	20

