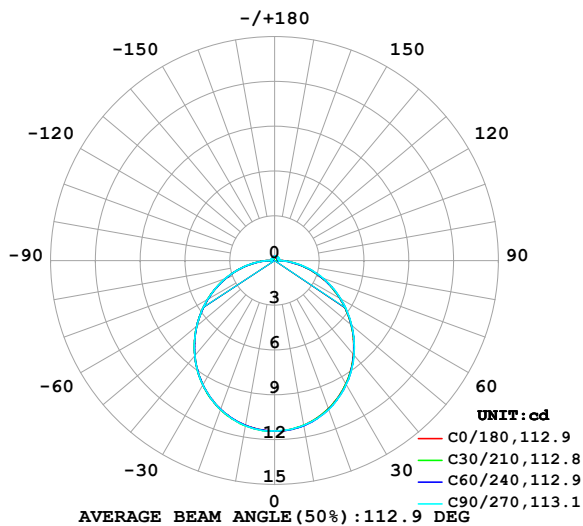


## LUMINAIRE PHOTOMETRIC TEST REPORT

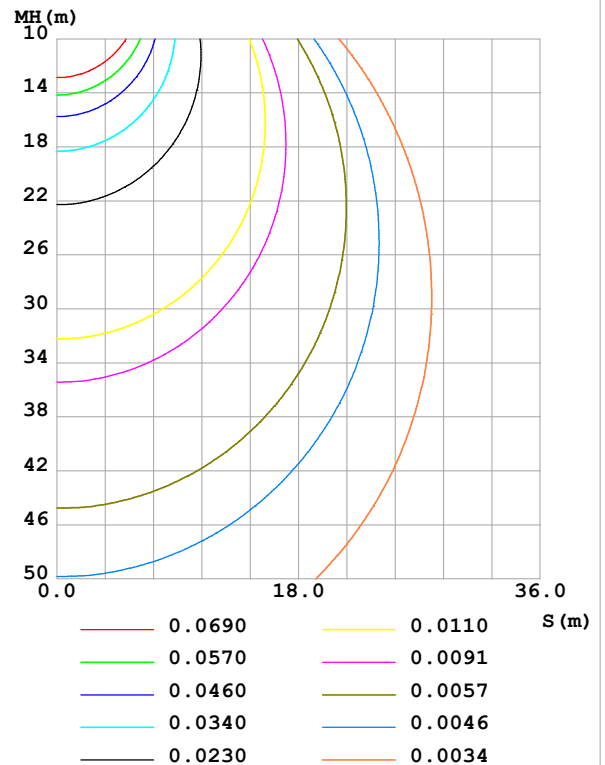
Test:U:24.00V I:0.4751A P:11.40W PF:1.000 Freq:0Hz Lamp Flux:35.1634x1 lm		
NAME: SF16-24V-5050-70-SPI-RGBW(3000K)-B	TYPE:	WEIGHT:
SPEC.:	DIM.: Length=1m	SERIAL No.:
MFR.: OLympia lighting	SUR.:	Shielding Angle:

DATA OF LAMP		PHOTOMETRIC DATA				Eff: 3.08 lm/W
MODEL	5050	I <sub>max</sub> (cd)	11.42	S/MH(C0/180)	1.25	
NOMINAL POWER(W)		LOR(%)	100.0	S/MH(C90/270)	1.25	
RATED VOLTAGE(V)	24	TOTAL FLUX(lm)	35.163	η UP,DN(C0-180)	2.2,47.7	
NOMINAL FLUX(lm)	35.1634	CIE CLASS	DIRECT	η UP,DN(C180-360)	1.9,48.2	
LAMPS INSIDE	1	η up (%)	4.1	CIBSE SHR NOM	1.25	
TEST VOLTAGE(V)		η down (%)	95.9	CIBSE SHR MAX	1.35	

LUMINOUS INTENSITY DISTRIBUTION DIAGRAM



C0 PLANE ISOLUX DIAGRAM (UNIT:lx)



C Range: 0 - 360DEG  
C Interval: 30.0DEG  
Test Speed: HIGH  
Temperature:25.3℃  
Operators:  
Test Date:2025-03-17

γ Range: 0 - 180DEG  
γ Interval: 1.0DEG  
Test System:EVERFINE GO-2000B\_V1 SYSTEM V2.00.488  
Humidity:65.0%  
Test Distance:6.360m [K=1.0000]  
Remarks:

## ZONAL FLUX DIAGRAM

## ZONAL FLUX DIAGRAM:

$\gamma$	C0	C45	C90	C135	C180	C225	C270	C315	$\gamma$	$\Phi$ zone	$\Phi$ total	%lum, lamp
10	11.21	11.22	11.21	11.22	11.22	11.23	11.24	11.22	0- 10	1.081	1.081	3.07,3.07
20	10.55	10.58	10.60	10.61	10.60	10.61	10.62	10.59	10- 20	3.092	4.172	11.9,11.9
30	9.548	9.573	9.600	9.625	9.615	9.622	9.625	9.596	20- 30	4.672	8.845	25.2,25.2
40	8.230	8.253	8.280	8.310	8.322	8.327	8.323	8.293	30- 40	5.617	14.46	41.1,41.1
50	6.704	6.715	6.739	6.783	6.810	6.811	6.819	6.778	40- 50	5.826	20.29	57.7,57.7
60	5.053	5.066	5.111	5.130	5.174	5.165	5.180	5.133	50- 60	5.326	25.61	72.8,72.8
70	3.369	3.384	3.442	3.451	3.492	3.479	3.500	3.443	60- 70	4.241	29.85	84.9,84.9
80	1.698	1.715	1.791	1.785	1.819	1.807	1.846	1.773	70- 80	2.751	32.61	92.7,92.7
90	0.4943	0.4087	0.2858	0.4344	0.5242	0.4258	0.2752	0.4155	80- 90	1.117	33.72	95.9,95.9
100	0.1587	0.2194	0.2858	0.2135	0.1443	0.1732	0.2511	0.1717	90-100	0.2626	33.99	96.6,96.6
110	0.1616	0.2238	0.2858	0.2265	0.1702	0.1776	0.2511	0.1731	100-110	0.2138	34.20	97.3,97.3
120	0.1817	0.2368	0.2858	0.2366	0.1847	0.1906	0.2569	0.1818	110-120	0.2091	34.41	97.9,97.9
130	0.2019	0.2483	0.2858	0.2467	0.2077	0.2021	0.2310	0.1948	120-130	0.1983	34.61	98.4,98.4
140	0.2222	0.2641	0.2915	0.2582	0.2279	0.2180	0.2223	0.2092	130-140	0.1793	34.79	98.9,98.9
150	0.2366	0.2757	0.2915	0.2698	0.2453	0.2396	0.2223	0.2251	140-150	0.1538	34.94	99.4,99.4
160	0.2568	0.2844	0.2915	0.2756	0.2683	0.2613	0.2453	0.2539	150-160	0.1202	35.06	99.7,99.7
170	0.2770	0.2844	0.2858	0.2784	0.2799	0.2757	0.2684	0.2756	160-170	0.0773	35.14	99.9,99.9
180	0.2827	0.2844	0.2858	0.2799	0.2827	0.2801	0.2800	0.2813	170-180	0.0267	35.16	100,100
DEG	LUMINOUS INTENSITY:cd									UNIT:lm		

Conical surface Flux(90deg): 17.395 lm

%lum = 49.5%

%lamp = 49.5%

Conical surface Flux(130deg): 27.9 lm

%lum = 79.3%

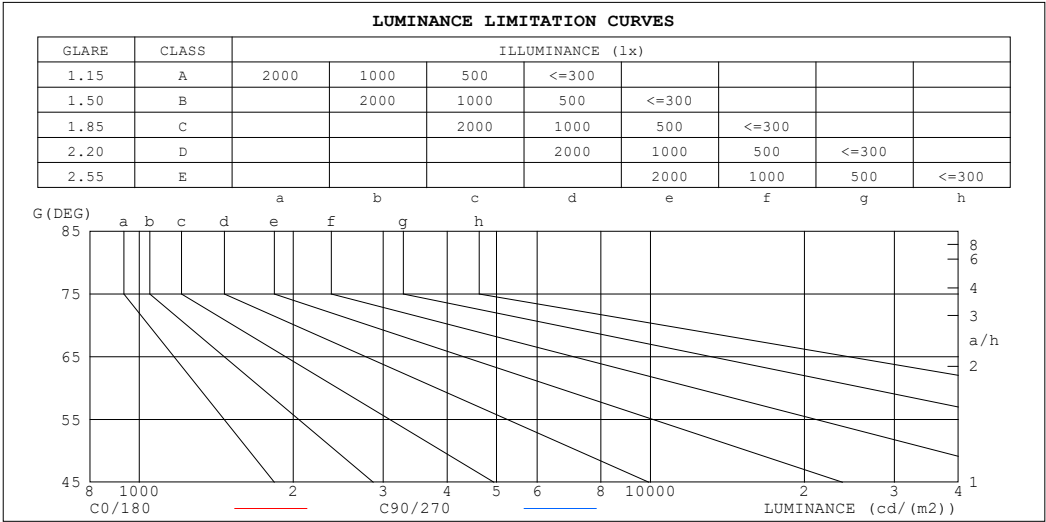
%lamp = 79.3%

C Range: 0 - 360DEG  
 C Interval: 30.0DEG  
 Test Speed: HIGH  
 Temperature:25.3℃  
 Operators:  
 Test Date:2025-03-17

$\gamma$  Range: 0 - 180DEG  
 $\gamma$  Interval: 1.0DEG  
 Test System:EVERFINE GO-2000B\_V1 SYSTEM V2.00.488  
 Humidity:65.0%  
 Test Distance:6.360m [K=1.0000]  
 Remarks:

LUMINANCE LIMITATION CURVES

Test:U:24.00V I:0.4751A P:11.40W PF:1.000 Freq:0Hz Lamp Flux:35.1634x1 lm		
NAME: SF16-24V-5050-70-SPI-RGBW(3000K)-B	TYPE:	WEIGHT:
SPEC.:	DIM.: Length=1m	SERIAL No.:
MFR.: OLympia lighting	SUR.:	Shielding Angle:



LUMINANCE cd/(m2)		
G (DEG)	C0/180	C90/270
85	693	669
80	593	625
75	592	613
70	597	610
65	604	612
60	613	619
55	622	626
50	632	635
45	641	645

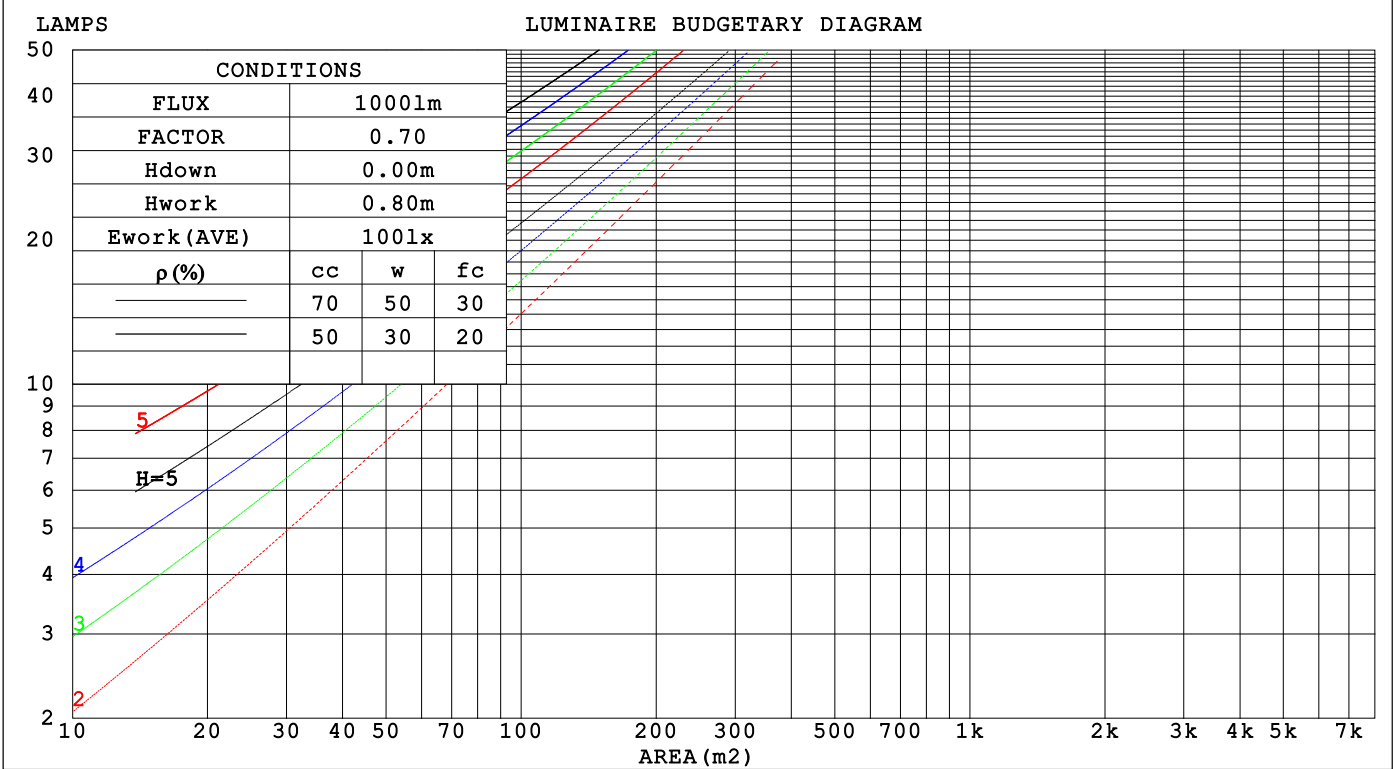
C Range: 0 - 360DEG  
C Interval: 30.0DEG  
Test Speed: HIGH  
Temperature:25.3℃  
Operators:  
Test Date:2025-03-17

γ Range: 0 - 180DEG  
γ Interval: 1.0DEG  
Test System:EVERFINE GO-2000B\_V1 SYSTEM V2.00.488  
Humidity:65.0%  
Test Distance:6.360m [K=1.0000]  
Remarks:

CU AND LUMINAIRE BUDGETARY ESTIMATE DIAGRAM

Test:U:24.00V I:0.4751A P:11.40W PF:1.000 Freq:0Hz		
Lamp Flux:35.1634x1 lm		
NAME: SF16-24V-5050-70-SPI-RGBW(3000K)-B	TYPE:	WEIGHT:
SPEC.:	DIM.: Length=1m	SERIAL No.:
MFR.: OLYMPIA lighting	SUR.:	Shielding Angle:

pcc	80%			70%			50%			30%			10%			0
p <sub>w</sub>	50%	30%	10%	50%	30%	10%	50%	30%	10%	50%	30%	10%	50%	30%	10%	0
p <sub>fc</sub>	20%			20%			20%			20%			20%			0
RCR	RCR:Room Cavity Ratio															



C Range: 0 - 360DEG

C Interval: 30.0DEG

Test Speed: HIGH

Temperature:25.3℃

Operators:

Test Date:2025-03-17

γ Range: 0 - 180DEG

γ Interval: 1.0DEG

Test System:EVERFINE GO-2000B\_V1 SYSTEM V2.00.488

Humidity:65.0%

Test Distance:6.360m [K=1.0000]

Remarks:

## WEC AND CCEC

Test:U:24.00V I:0.4751A P:11.40W PF:1.000 Freq:0Hz Lamp Flux:35.1634x1 lm		
NAME: SF16-24V-5050-70-SPI-RGBW(3000K)-B	TYPE:	WEIGHT:
SPEC.:	DIM.: Length=1m	SERIAL No.:
MFR.: OLYMPIA lighting	SUR.:	Shielding Angle:

pcc	80%			70%			50%			30%			10%			0														
pw	50%	30%	10%	50%	30%	10%	50%	30%	10%	50%	30%	10%	50%	30%	10%	0														
pfc	20%			20%			20%			20%			20%			0														
RCR	RCR:Room Cavity Ratio															Wall Exitance Coefficients(WEC)														
0.0																														
1.0	.328	.186	.059	.320	.182	.058	.304	.174	.056	.289	.167	.054	.276	.160	.052															
2.0	.302	.165	.051	.294	.162	.050	.280	.156	.048	.268	.150	.047	.256	.145	.046															
3.0	.276	.147	.044	.270	.144	.043	.257	.139	.042	.246	.135	.041	.235	.130	.040															
4.0	.253	.132	.039	.247	.129	.038	.236	.125	.037	.226	.121	.037	.216	.118	.036															
5.0	.233	.119	.034	.228	.117	.034	.218	.113	.033	.209	.110	.033	.200	.107	.032															
6.0	.215	.108	.031	.211	.106	.031	.202	.103	.030	.194	.101	.030	.186	.098	.029															
7.0	.200	.099	.028	.196	.098	.028	.188	.095	.027	.180	.092	.027	.173	.090	.026															
8.0	.187	.091	.026	.183	.090	.025	.175	.088	.025	.169	.085	.025	.162	.083	.024															
9.0	.175	.084	.024	.171	.083	.023	.165	.081	.023	.158	.079	.023	.152	.077	.022															
10.0	.164	.079	.022	.161	.078	.022	.155	.076	.021	.149	.074	.021	.144	.072	.021															

pcc	80%			70%			50%			30%			10%			0
pw	50%	30%	10%	50%	30%	10%	50%	30%	10%	50%	30%	10%	50%	30%	10%	0
pfc	20%			20%			20%			20%			20%			0
RCR	RCR:Room Cavity Ratio						Ceiling Cavity Exitance Coefficients (CCEC)									
0.0	.222	.222	.222	.189	.189	.189	.129	.129	.129	.074	.074	.074	.024	.024	.024	
1.0	.213	.187	.164	.182	.161	.141	.125	.111	.098	.072	.064	.057	.023	.021	.018	
2.0	.205	.164	.128	.176	.141	.111	.120	.097	.077	.069	.057	.045	.022	.018	.015	
3.0	.198	.146	.105	.169	.126	.091	.116	.088	.064	.067	.051	.038	.022	.017	.012	
4.0	.190	.133	.090	.163	.115	.078	.112	.080	.055	.065	.047	.032	.021	.015	.011	
5.0	.182	.123	.079	.157	.106	.069	.108	.074	.048	.062	.044	.029	.020	.014	.009	
6.0	.175	.115	.071	.150	.099	.062	.104	.069	.044	.060	.041	.026	.019	.013	.009	
7.0	.168	.108	.065	.145	.093	.057	.100	.065	.040	.058	.039	.024	.019	.013	.008	
8.0	.162	.102	.061	.139	.088	.053	.096	.062	.038	.056	.037	.022	.018	.012	.007	
9.0	.156	.097	.058	.134	.084	.050	.093	.059	.036	.054	.035	.021	.018	.011	.007	
10.0	.150	.093	.055	.129	.081	.048	.090	.057	.034	.052	.034	.020	.017	.011	.007	

C Range: 0 - 360DEG  
C Interval: 30.0DEG  
Test Speed: HIGH  
Temperature:25.3℃  
Operators:  
Test Date:2025-03-17

γ Range: 0 - 180DEG  
γ Interval: 1.0DEG  
Test System:EVERFINE GO-2000B\_V1 SYSTEM V2.00.488  
Humidity:65.0%  
Test Distance:6.360m [K=1.0000]  
Remarks:

UGR(Unified Glare Rating) Table

Test:U:24.00V I:0.4751A P:11.40W PF:1.000 Freq:0Hz Lamp Flux:35.1634x1 lm											
NAME: SF16-24V-5050-70-SPI-RGBW(3000K)-B						TYPE:		WEIGHT:			
SPEC.:						DIM.: Length=1m		SERIAL No.:			
MFR.: OLympia lighting						SUR.:		Shielding Angle:			
ceiling/cavity	0.7	0.7	0.5	0.5	0.3	0.7	0.7	0.5	0.5	0.3	
walls	0.5	0.3	0.5	0.3	0.3	0.5	0.3	0.5	0.3	0.3	
working plane	0.2	0.2	0.2	0.2	0.2	0.2	0.2	0.2	0.2	0.2	
Room dimensions		Viewed crosswise					Viewed endwise				
x = 2H y = 2H	2H	22.6	24.1	23.0	24.4	24.7	22.7	24.2	23.0	24.5	24.7
	3H	24.3	25.7	24.7	26.0	26.3	24.4	25.8	24.7	26.1	26.4
	4H	25.1	26.4	25.4	26.7	27.0	25.2	26.5	25.5	26.8	27.1
	6H	25.7	26.9	26.1	27.3	27.6	25.8	27.0	26.2	27.4	27.8
	8H	25.9	27.1	26.3	27.5	27.8	26.1	27.3	26.5	27.6	28.0
	12H	26.1	27.3	26.6	27.7	28.0	26.3	27.4	26.7	27.8	28.2
4H	2H	23.3	24.6	23.7	24.9	25.3	23.3	24.6	23.7	25.0	25.3
	3H	25.2	26.3	25.6	26.7	27.1	25.2	26.4	25.6	26.7	27.1
	4H	26.0	27.1	26.5	27.5	27.9	26.1	27.2	26.6	27.6	28.0
	6H	26.8	27.7	27.3	28.2	28.6	26.9	27.9	27.4	28.3	28.7
	8H	27.1	28.0	27.6	28.4	28.9	27.2	28.1	27.7	28.6	29.0
	12H	27.4	28.2	27.9	28.7	29.2	27.5	28.3	28.0	28.8	29.3
8H	4H	26.4	27.2	26.8	27.7	28.2	26.4	27.3	26.9	27.8	28.2
	6H	27.3	28.0	27.8	28.5	29.0	27.4	28.2	27.9	28.6	29.1
	8H	27.7	28.4	28.3	28.9	29.4	27.9	28.5	28.4	29.0	29.6
	12H	28.2	28.7	28.7	29.2	29.8	28.3	28.8	28.8	29.3	29.9
12H	4H	26.4	27.2	26.9	27.7	28.2	26.5	27.3	27.0	27.7	28.2
	6H	27.4	28.1	27.9	28.6	29.1	27.5	28.2	28.0	28.7	29.2
	8H	27.9	28.5	28.4	29.0	29.5	28.0	28.6	28.6	29.1	29.7
Variations with the observer position at spacings(CIE Pub.117):											
S = 1.0H		+ 0.1 / - 0.2					+ 0.1 / - 0.2				
1.5H		+ 0.2 / - 0.3					+ 0.2 / - 0.3				
2.0H		+ 0.1 / - 0.3					+ 0.1 / - 0.3				

CIE Pub.117, 35.16 lm Total Lamp Luminous Flux Correct (8log(F/F0) = -11.6)  
Area: 0.0165 m2

C Range: 0 - 360DEG  
C Interval: 30.0DEG  
Test Speed: HIGH  
Temperature:25.3℃  
Operators:  
Test Date:2025-03-17

γ Range: 0 - 180DEG  
γ Interval: 1.0DEG  
Test System:EVERFINE GO-2000B\_V1 SYSTEM V2.00.488  
Humidity:65.0%  
Test Distance:6.360m [K=1.0000]  
Remarks:

## UTILIZATION FACTORS TABLE

Test:U:24.00V I:0.4751A P:11.40W PF:1.000 Freq:0Hz Lamp Flux:35.1634x1 lm		
NAME: SF16-24V-5050-70-SPI-RGBW(3000K)-B	TYPE:	WEIGHT:
SPEC.:	DIM.: Length=1m	SERIAL No.:
MFR.: OLympia lighting	SUR.:	Shielding Angle:

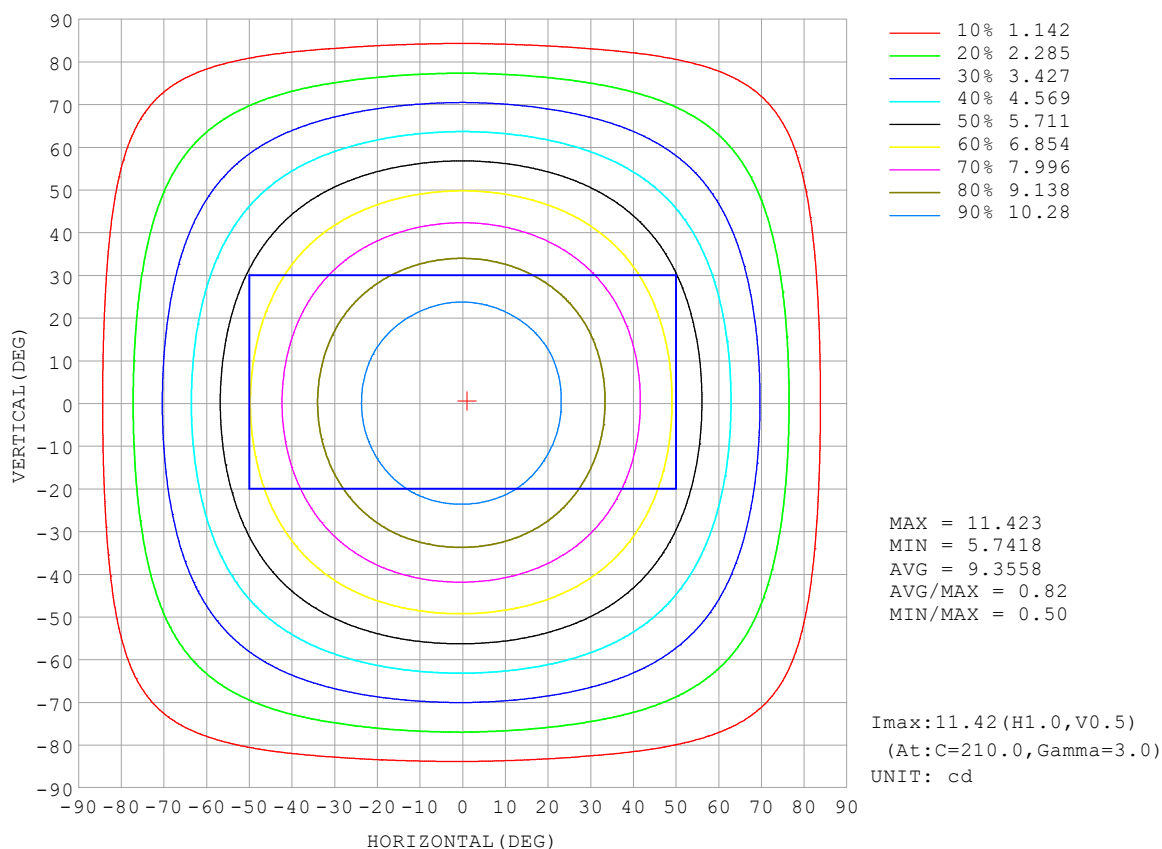
REFLECTANCE										
Ceiling	0.8	0.8	0.8	0.7	0.7	0.7	0.5	0.5	0.5	0
Walls	0.7	0.5	0.3	0.7	0.5	0.3	0.7	0.5	0.3	0
Working plane	0.2	0.2	0.2	0.2	0.2	0.2	0.2	0.2	0.2	0
ROOM INDEX	UTILIZATION FACTORS (PERCENT) $k(RI) \times RCR = 5$									
$k = 0.60$	55	44	37	55	43	37	53	43	36	30
0.80	65	53	46	64	53	46	62	52	45	38
1.00	74	62	54	72	61	54	69	62	53	46
1.25	81	70	62	79	69	62	76	67	61	53
1.50	86	75	68	84	74	67	80	72	66	58
2.00	93	83	77	90	82	76	86	79	74	65
2.50	97	88	82	94	87	81	90	83	78	69
3.00	100	93	87	97	91	85	93	87	83	73
4.00	104	98	93	101	96	91	96	92	88	78
5.00	107	101	97	104	99	95	99	95	91	81
ROOM INDEX	UF (total)									Direct
According to DIN EN 13032-2 2004			Suspended					SHRNOM = 1.25		

C Range: 0 - 360DEG  
 C Interval: 30.0DEG  
 Test Speed: HIGH  
 Temperature: 25.3 °C  
 Operators:  
 Test Date: 2025-03-17

γ Range: 0 - 180DEG  
 γ Interval: 1.0DEG  
 Test System: EVERFINE GO-2000B\_V1 SYSTEM V2.00.488  
 Humidity: 65.0%  
 Test Distance: 6.360m [K=1.0000]  
 Remarks:

## ISOCANDELA DIAGRAM

Test:U:24.00V I:0.4751A P:11.40W PF:1.000 Freq:0Hz Lamp Flux:35.1634x1 lm		
NAME: SF16-24V-5050-70-SPI-RGBW(3000K)-B	TYPE:	WEIGHT:
SPEC.:	DIM.: Length=1m	SERIAL No.:
MFR.: OLympia lighting	SUR.:	Shielding Angle:



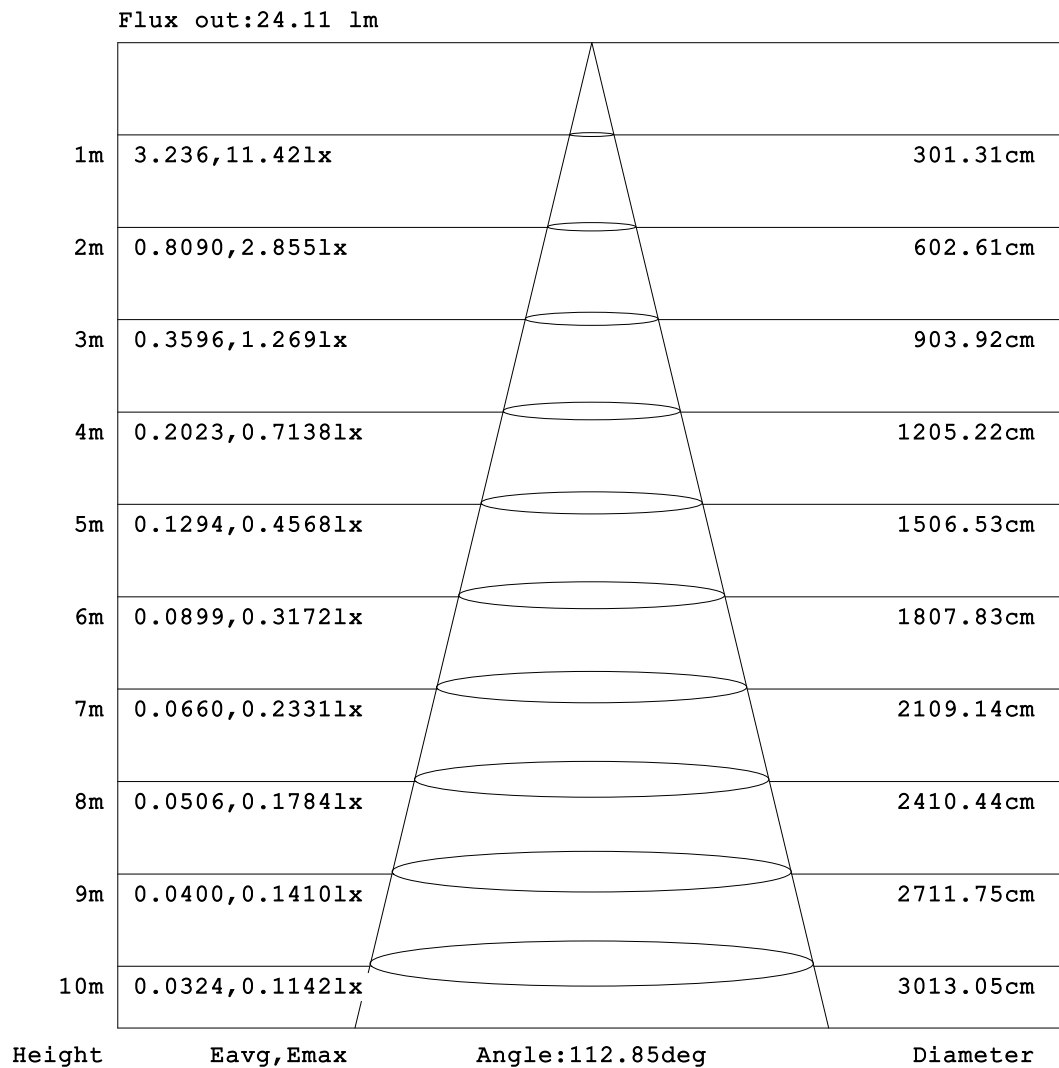
C Range: 0 - 360DEG  
C Interval: 30.0DEG  
Test Speed: HIGH  
Temperature: 25.3°C  
Operators:  
Test Date: 2025-03-17

γ Range: 0 - 180DEG  
γ Interval: 1.0DEG  
Test System: EVERFINE GO-2000B\_V1 SYSTEM V2.00.488  
Humidity: 65.0%  
Test Distance: 6.360m [K=1.0000]  
Remarks:



## AAI Figure

Test:U:24.00V I:0.4751A P:11.40W PF:1.000 Freq:0Hz Lamp Flux:35.1634x1 lm		
NAME: SF16-24V-5050-70-SPI-RGBW(3000K)-B	TYPE:	WEIGHT:
SPEC.:	DIM.: Length=1m	SERIAL No.:
MFR.: OLympia lighting	SUR.:	Shielding Angle:



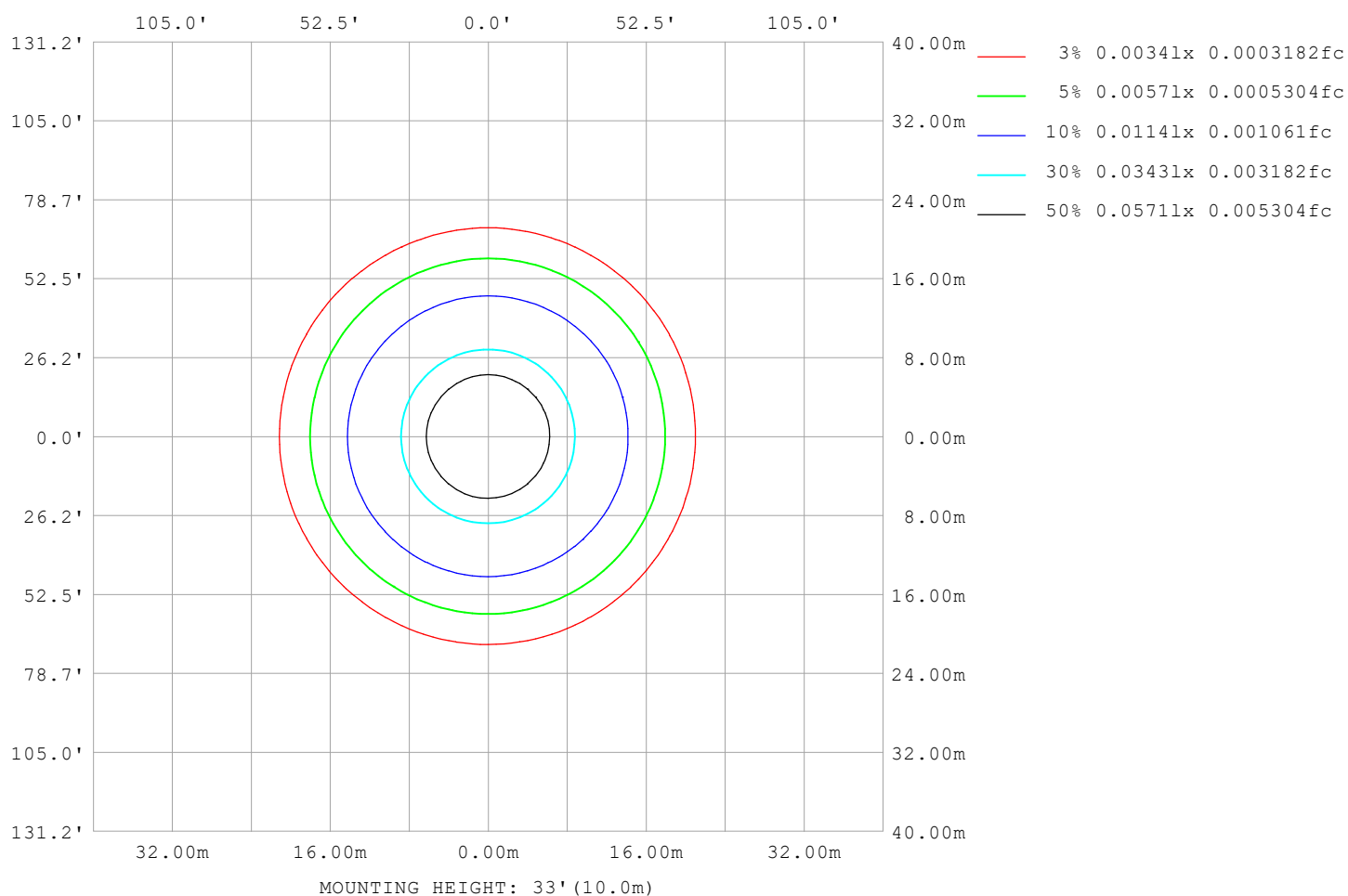
Note:The Curves indicate the illuminated area and the average illumination when the luminaire is at different distance.

C Range: 0 - 360DEG  
C Interval: 30.0DEG  
Test Speed: HIGH  
Temperature:25.3℃  
Operators:  
Test Date:2025-03-17

γ Range: 0 - 180DEG  
γ Interval: 1.0DEG  
Test System:EVERFINE GO-2000B\_V1 SYSTEM V2.00.488  
Humidity:65.0%  
Test Distance:6.360m [K=1.0000]  
Remarks:

## ISOLUX DIAGRAM

Test:U:24.00V I:0.4751A P:11.40W PF:1.000 Freq:0Hz Lamp Flux:35.1634x1 lm		
NAME: SF16-24V-5050-70-SPI-RGBW(3000K)-B	TYPE:	WEIGHT:
SPEC.:	DIM.: Length=1m	SERIAL No.:
MFR.: OLympia lighting	SUR.:	Shielding Angle:



C Range: 0 - 360DEG  
C Interval: 30.0DEG  
Test Speed: HIGH  
Temperature: 25.3°C  
Operators:  
Test Date: 2025-03-17

γ Range: 0 - 180DEG  
γ Interval: 1.0DEG  
Test System: EVERFINE GO-2000B\_V1 SYSTEM V2.00.488  
Humidity: 65.0%  
Test Distance: 6.360m [K=1.0000]  
Remarks:

## LED Avg.L Report

Test:U:24.00V I:0.4751A P:11.40W PF:1.000 Freq:0Hz Lamp Flux:35.1634x1 lm		
NAME: SF16-24V-5050-70-SPI-RGBW(3000K)-B	TYPE:	WEIGHT:
SPEC.:	DIM.: Length=1m	SERIAL No.:
MFR.: OLympia lighting	SUR.:	Shielding Angle:

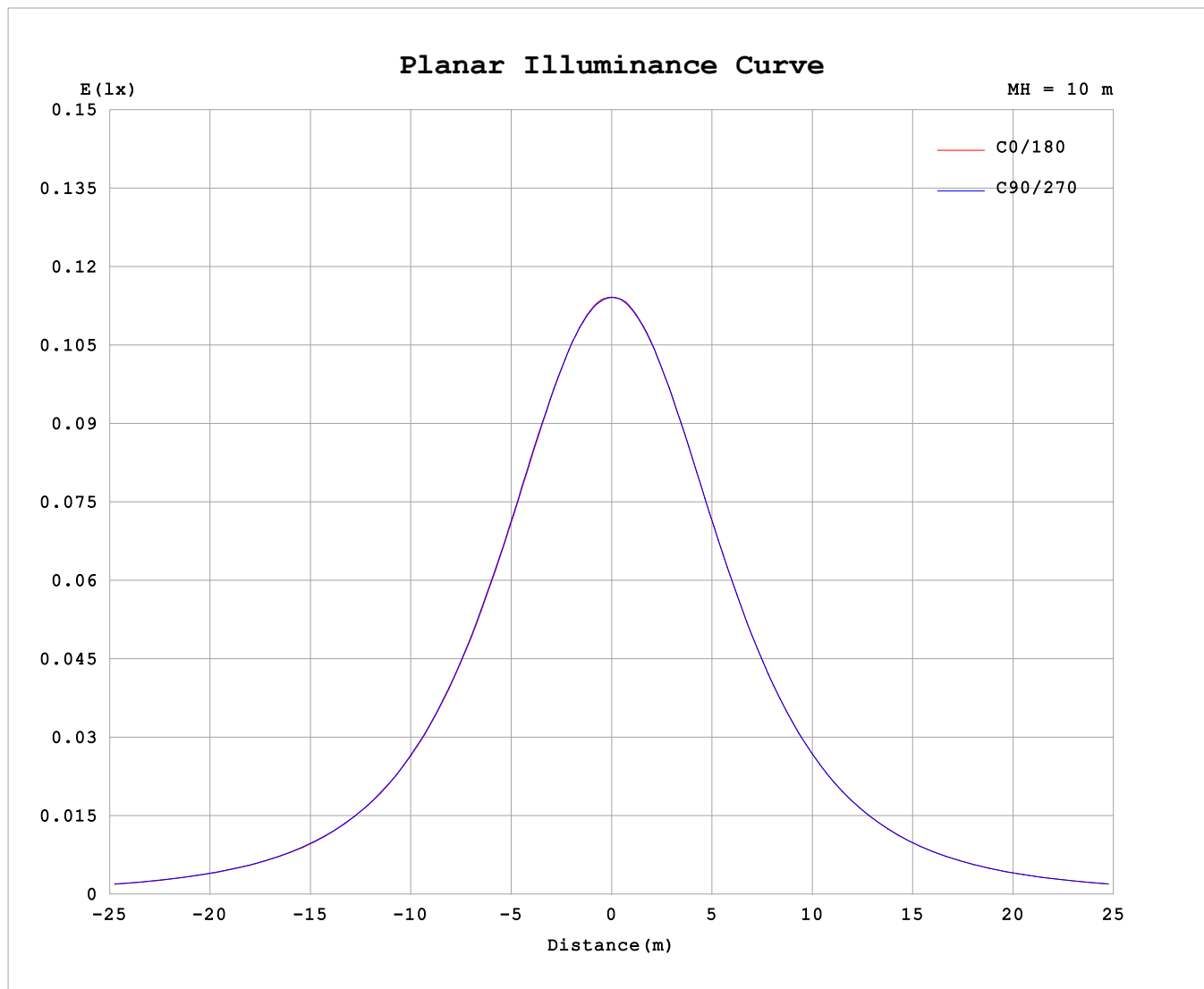
AvgL	cd/m2
L_0~180 (65) av	613
L_0~180 (75) av	606
L_0~180 (85) av	713
L_90~270 (65) av	617
L_90~270 (75) av	620
L_90~270 (85) av	693
L_45 (65) av	613
L_45 (75) av	608
L_45 (85) av	678

Standard: GB/T 29293-2012

C Range: 0 - 360DEG  
C Interval: 30.0DEG  
Test Speed: HIGH  
Temperature:25.3℃  
Operators:  
Test Date:2025-03-17

γ Range: 0 - 180DEG  
γ Interval: 1.0DEG  
Test System:EVERFINE GO-2000B\_V1 SYSTEM V2.00.488  
Humidity:65.0%  
Test Distance:6.360m [K=1.0000]  
Remarks:

## Planar Illuminance Curve



C Range: 0 - 360DEG  
C Interval: 30.0DEG  
Test Speed: HIGH  
Temperature: 25.3 °C  
Operators:  
Test Date: 2025-03-17

$\gamma$  Range: 0 - 180DEG  
 $\gamma$  Interval: 1.0DEG  
Test System: EVERFINE GO-2000B\_V1 SYSTEM V2.00.488  
Humidity: 65.0%  
Test Distance: 6.360m [K=1.0000]  
Remarks:

## LUMINOUS DISTRIBUTION INTENSITY DATA

Test:U:24.00V I:0.4751A P:11.40W PF:1.000 Freq:0Hz Lamp Flux:35.1634x1 lm		
NAME: SF16-24V-5050-70-SPI-RGBW(3000K)-B	TYPE:	WEIGHT:
SPEC.:	DIM.: Length=1m	SERIAL No.:
MFR.: OLYMPIA lighting	SUR.:	Shielding Angle:

Table--1

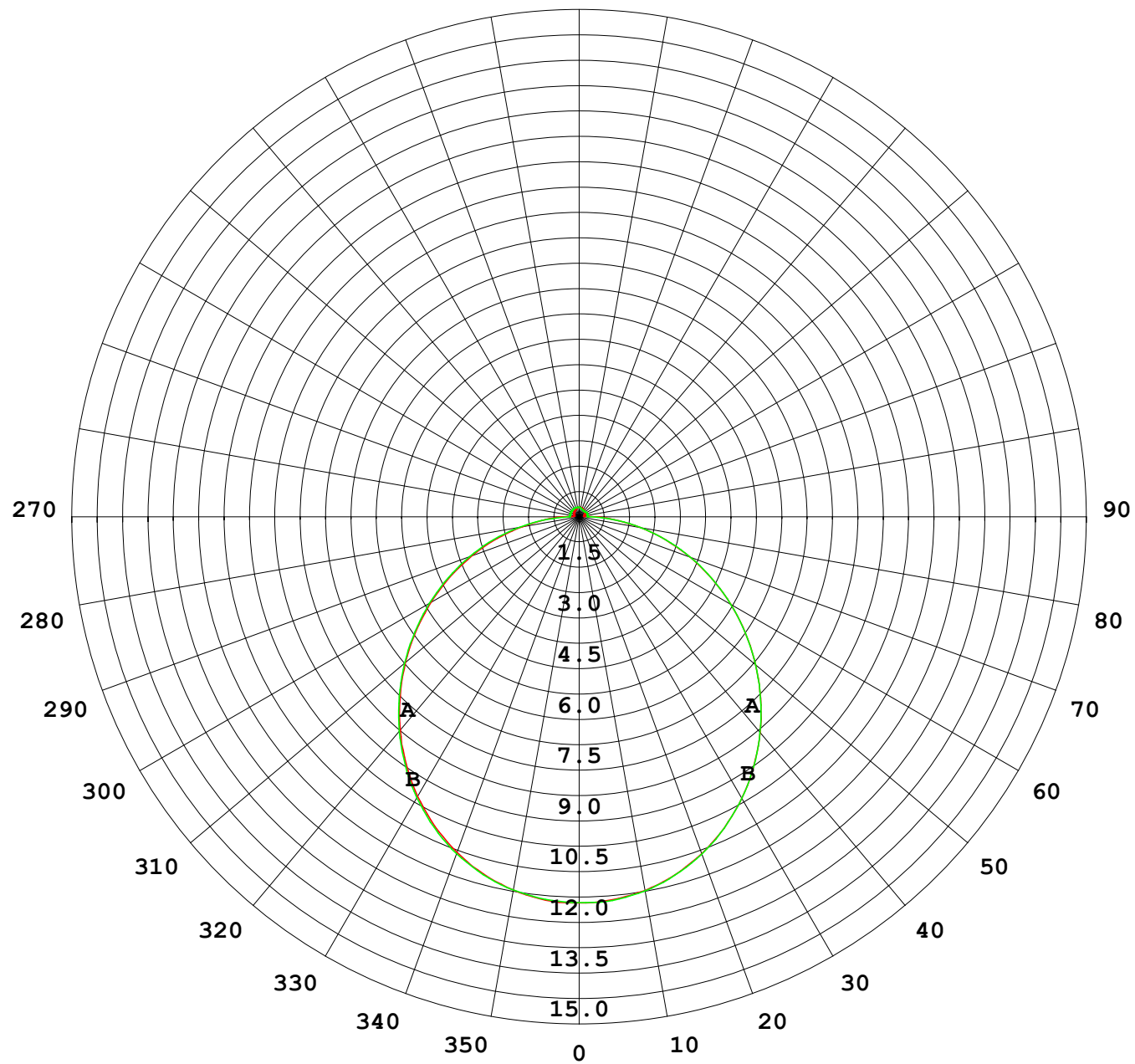
UNIT: cd

C (DEG) γ (DEG)	0	30	60	90	120	150	180	210	240	270	300	330							
0	11.4	11.4	11.4	11.4	11.4	11.4	11.4	11.4	11.4	11.4	11.4	11.4							
5	11.4	11.4	11.4	11.4	11.4	11.4	11.4	11.4	11.4	11.4	11.4	11.4							
10	11.2	11.2	11.2	11.2	11.2	11.2	11.2	11.2	11.2	11.2	11.2	11.2							
15	10.9	10.9	11.0	11.0	11.0	11.0	11.0	11.0	11.0	11.0	10.9	11.0							
20	10.6	10.6	10.6	10.6	10.6	10.6	10.6	10.6	10.6	10.6	10.6	10.6							
25	10.1	10.1	10.1	10.1	10.2	10.1	10.1	10.2	10.1	10.2	10.1	10.1							
30	9.55	9.55	9.59	9.60	9.63	9.62	9.61	9.63	9.61	9.62	9.60	9.59							
35	8.92	8.93	8.96	8.97	9.01	9.00	9.00	9.02	9.00	9.01	8.98	8.97							
40	8.23	8.24	8.26	8.28	8.31	8.31	8.32	8.33	8.32	8.32	8.30	8.29							
45	7.48	7.49	7.51	7.53	7.56	7.57	7.59	7.60	7.58	7.59	7.57	7.55							
50	6.70	6.71	6.72	6.74	6.78	6.79	6.81	6.82	6.81	6.82	6.79	6.76							
55	5.88	5.89	5.91	5.93	5.96	5.97	6.01	6.00	5.99	6.00	5.98	5.95							
60	5.05	5.05	5.08	5.11	5.12	5.14	5.17	5.17	5.16	5.18	5.15	5.12							
65	4.21	4.21	4.24	4.27	4.27	4.30	4.33	4.32	4.32	4.34	4.30	4.27							
70	3.37	3.37	3.40	3.44	3.44	3.46	3.49	3.49	3.47	3.50	3.46	3.43							
75	2.53	2.53	2.56	2.62	2.60	2.62	2.65	2.64	2.63	2.67	2.62	2.59							
80	1.70	1.70	1.73	1.79	1.78	1.79	1.82	1.81	1.80	1.85	1.79	1.76							
85	1.00	0.96	0.93	0.96	0.96	1.01	1.05	1.02	0.98	1.03	0.97	1.00							
90	0.49	0.45	0.37	0.29	0.38	0.48	0.52	0.49	0.36	0.28	0.36	0.47							
95	0.18	0.19	0.24	0.29	0.23	0.18	0.16	0.16	0.19	0.25	0.19	0.16							
100	0.16	0.20	0.24	0.29	0.23	0.20	0.14	0.14	0.20	0.25	0.20	0.15							
105	0.16	0.20	0.24	0.29	0.23	0.21	0.15	0.14	0.21	0.25	0.20	0.15							
110	0.16	0.21	0.24	0.29	0.24	0.22	0.17	0.15	0.21	0.25	0.20	0.15							
115	0.17	0.22	0.24	0.29	0.24	0.22	0.18	0.16	0.21	0.25	0.20	0.16							
120	0.18	0.23	0.25	0.29	0.25	0.23	0.18	0.17	0.21	0.26	0.20	0.16							
125	0.19	0.23	0.25	0.29	0.25	0.24	0.20	0.18	0.21	0.25	0.20	0.18							
130	0.20	0.25	0.25	0.29	0.25	0.24	0.21	0.19	0.21	0.23	0.20	0.18							
135	0.21	0.25	0.26	0.29	0.25	0.25	0.22	0.20	0.22	0.23	0.21	0.19							
140	0.22	0.26	0.27	0.29	0.26	0.26	0.23	0.21	0.23	0.22	0.22	0.20							
145	0.23	0.27	0.27	0.29	0.27	0.26	0.24	0.22	0.24	0.22	0.23	0.20							
150	0.24	0.27	0.28	0.29	0.27	0.27	0.25	0.23	0.25	0.22	0.24	0.21							
155	0.25	0.28	0.28	0.29	0.27	0.27	0.26	0.24	0.26	0.23	0.26	0.23							
160	0.26	0.28	0.29	0.29	0.27	0.28	0.27	0.25	0.27	0.25	0.27	0.24							
165	0.27	0.28	0.29	0.29	0.27	0.28	0.28	0.26	0.28	0.26	0.27	0.25							
170	0.28	0.28	0.29	0.29	0.28	0.28	0.28	0.27	0.28	0.27	0.28	0.27							
175	0.28	0.28	0.29	0.29	0.28	0.28	0.28	0.27	0.28	0.27	0.28	0.27							
180	0.28	0.28	0.29	0.29	0.28	0.28	0.28	0.28	0.28	0.28	0.28	0.28							

C Range: 0 - 360DEG  
C Interval: 30.0DEG  
Test Speed: HIGH  
Temperature:25.3℃  
Operators:  
Test Date:2025-03-17

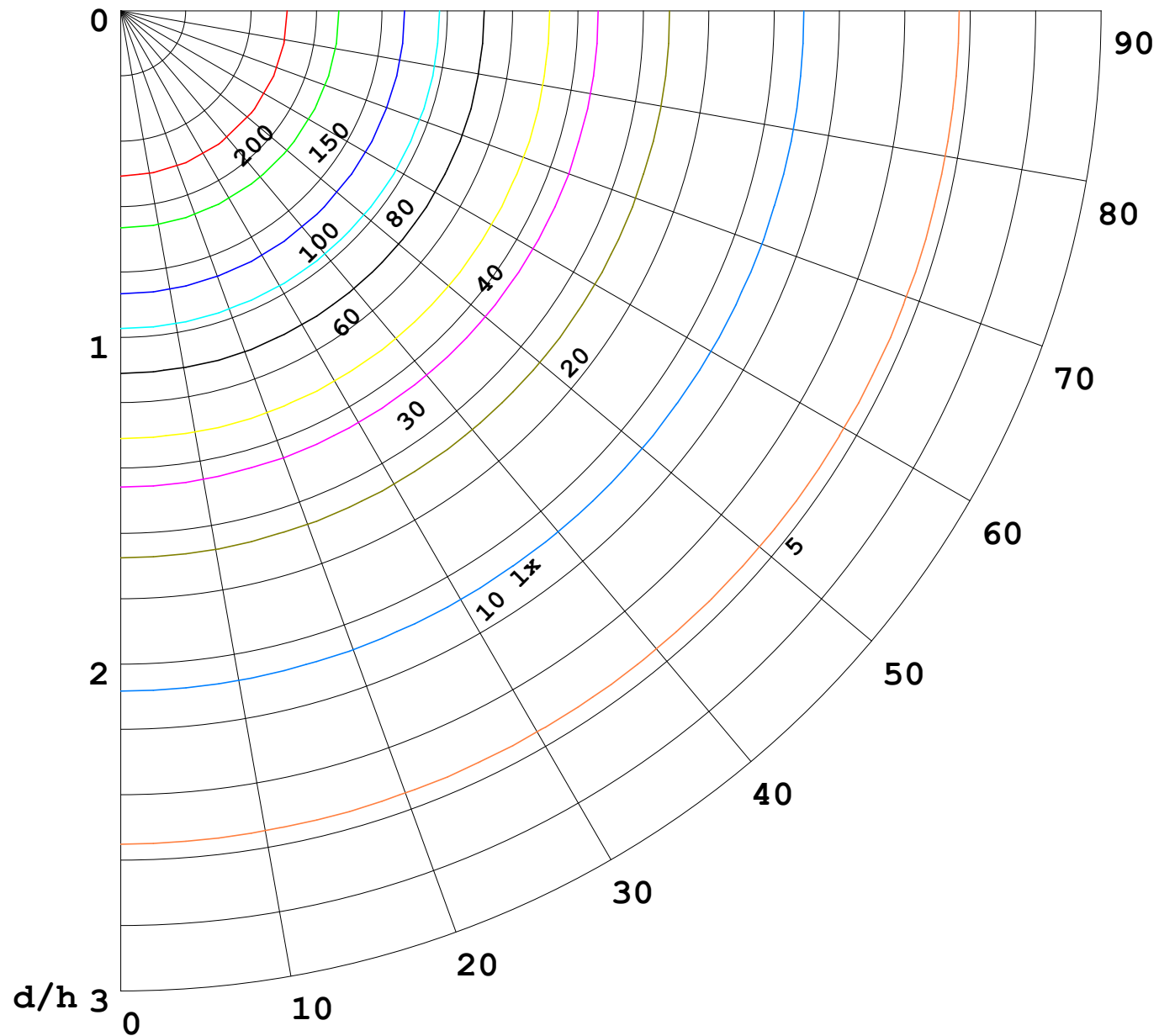
γ Range: 0 - 180DEG  
γ Interval: 1.0DEG  
Test System:EVERFINE GO-2000B\_V1 SYSTEM V2.00.488  
Humidity:65.0%  
Test Distance:6.360m [K=1.0000]  
Remarks:

I (cd)



1000 lm

$\kappa = 1$



F = 1000 lm  
 K = 0.7  
 Hcc = 0.8 m  
 Hfc = 0.0 m  
 Eave = 100 lx

	Pcc	Pw	Pfc
—————	70	50	30
—————	50	30	20

