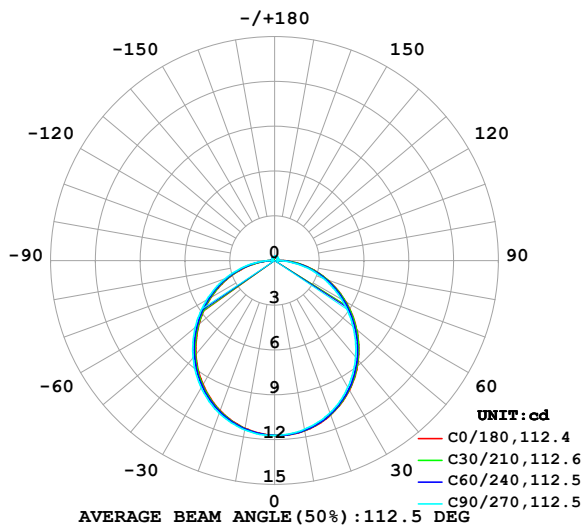


LUMINAIRE PHOTOMETRIC TEST REPORT

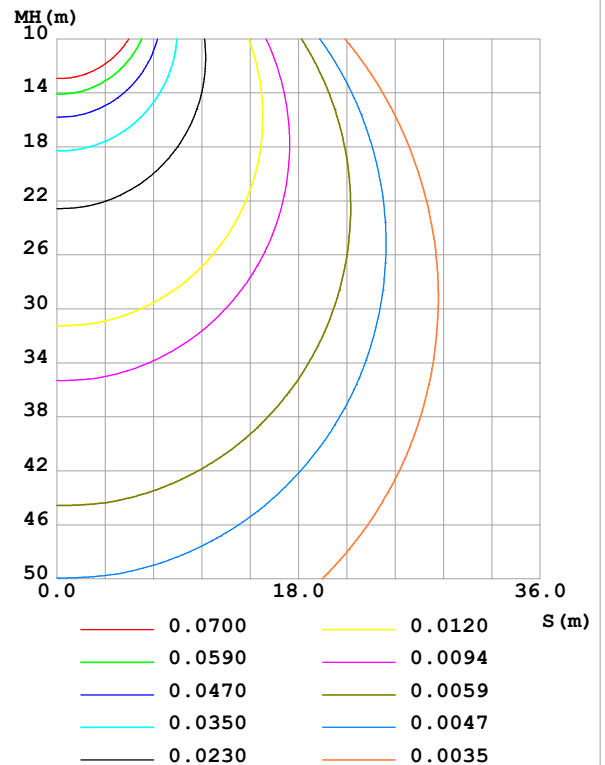
Test:U:24.00V I:0.2388A P:5.731W PF:1.000 Freq:0Hz Lamp Flux:35.7282x1 lm		
NAME: SF16-24v-5050-70-SPI-RGBW(2700K)-B	TYPE:	WEIGHT:
SPEC.:	DIM.: Length=1m	SERIAL No.:
MFR.: OLympia lighting	SUR.:	Shielding Angle:

DATA OF LAMP		PHOTOMETRIC DATA				Eff: 6.23 lm/W
MODEL	5050	Imax (cd)	11.73	S/MH(C0/180)	1.23	
NOMINAL POWER(W)		LOR(%)	100.0	S/MH(C90/270)	1.25	
RATED VOLTAGE(V)	24	TOTAL FLUX(lm)	35.728	η UP,DN(C0-180)	1.9,48.3	
NOMINAL FLUX(lm)	35.7282	CIE CLASS	DIRECT	η UP,DN(C180-360)	1.9,47.9	
LAMPS INSIDE	1	η up (%)	3.9	CIBSE SHR NOM	1.25	
TEST VOLTAGE(V)		η down (%)	96.1	CIBSE SHR MAX	1.35	

LUMINOUS INTENSITY DISTRIBUTION DIAGRAM



C0 PLANE ISOLUX DIAGRAM (UNIT:lx)



C Range: 0 - 360DEG
C Interval: 30.0DEG
Test Speed: HIGH
Temperature:25.3℃
Operators:
Test Date:2025-03-12

γ Range: 0 - 180DEG
 γ Interval: 1.0DEG
Test System:EVERFINE GO-2000B_V1 SYSTEM V2.00.488
Humidity:65.0%
Test Distance:6.360m [K=1.0000]
Remarks:

ZONAL FLUX DIAGRAM

ZONAL FLUX DIAGRAM:

γ	C0	C45	C90	C135	C180	C225	C270	C315	γ	Φ zone	Φ total	%lum,lamp
10	11.59	11.56	11.49	11.43	11.41	11.45	11.52	11.57	0- 10	1.108	1.108	3.1,3.1
20	11.01	10.96	10.85	10.74	10.68	10.75	10.88	10.98	10- 20	3.169	4.277	12,12
30	10.03	9.971	9.814	9.660	9.596	9.682	9.851	9.992	20- 30	4.785	9.062	25.4,25.4
40	8.734	8.651	8.448	8.265	8.205	8.305	8.502	8.689	30- 40	5.746	14.81	41.4,41.4
50	7.185	7.093	6.857	6.660	6.613	6.729	6.938	7.143	40- 50	5.949	20.76	58.1,58.1
60	5.506	5.415	5.184	4.946	4.908	5.033	5.251	5.465	50- 60	5.426	26.18	73.3,73.3
70	3.778	3.690	3.467	3.215	3.180	3.301	3.518	3.736	60- 70	4.305	30.49	85.3,85.3
80	2.062	1.971	1.745	1.520	1.490	1.604	1.809	2.017	70- 80	2.773	33.26	93.1,93.1
90	0.6041	0.4432	0.2108	0.2714	0.3109	0.2973	0.2290	0.4964	80- 90	1.089	34.35	96.1,96.1
100	0.1615	0.1631	0.2079	0.1847	0.1529	0.1905	0.2079	0.1905	90-100	0.2359	34.59	96.8,96.8
110	0.1615	0.1789	0.2195	0.1963	0.1731	0.2006	0.2137	0.1934	100-110	0.1977	34.78	97.4,97.4
120	0.1789	0.2020	0.2339	0.2150	0.1961	0.2150	0.2195	0.2034	110-120	0.1985	34.98	97.9,97.9
130	0.2019	0.2237	0.2455	0.2294	0.2106	0.2251	0.2281	0.2136	120-130	0.1933	35.17	98.5,98.5
140	0.2164	0.2410	0.2628	0.2425	0.2308	0.2381	0.2368	0.2251	130-140	0.1775	35.35	98.9,98.9
150	0.2336	0.2569	0.2830	0.2583	0.2539	0.2511	0.2454	0.2381	140-150	0.1534	35.51	99.4,99.4
160	0.2510	0.2771	0.2830	0.2713	0.2683	0.2627	0.2570	0.2540	150-160	0.1198	35.63	99.7,99.7
170	0.2654	0.2771	0.2830	0.2742	0.2741	0.2727	0.2714	0.2713	160-170	0.0763	35.70	99.9,99.9
180	0.2769	0.2771	0.2801	0.2800	0.2741	0.2785	0.2801	0.2771	170-180	0.0263	35.73	100,100
DEG	LUMINOUS INTENSITY:cd									UNIT:lm		

Conical surface Flux(90deg): 17.804 lm

%lum = 49.8%

%lamp = 49.8%

Conical surface Flux(130deg): 28.505 lm

%lum = 79.8%

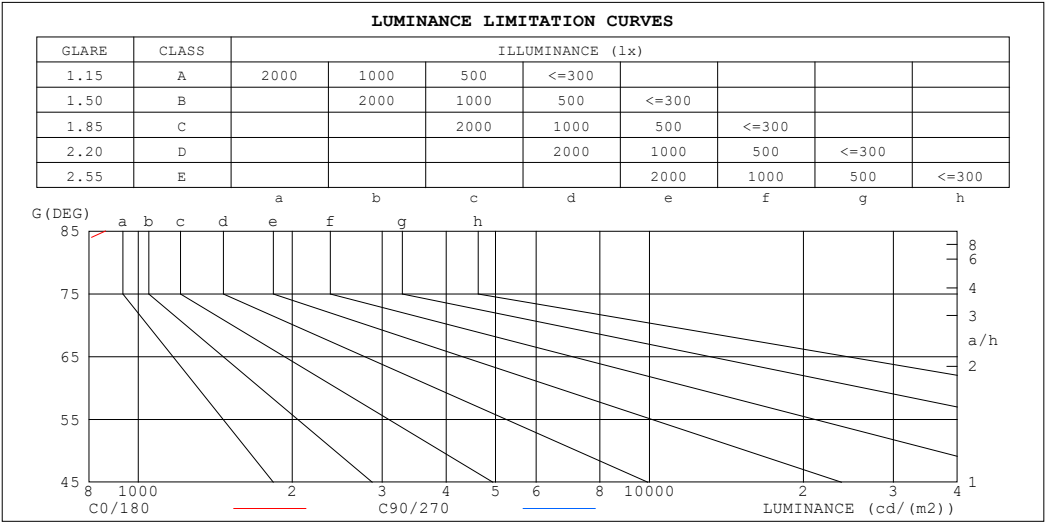
%lamp = 79.8%

C Range: 0 - 360DEG
 C Interval: 30.0DEG
 Test Speed: HIGH
 Temperature:25.3℃
 Operators:
 Test Date:2025-03-12

γ Range: 0 - 180DEG
 γ Interval: 1.0DEG
 Test System:EVERFINE GO-2000B_V1 SYSTEM V2.00.488
 Humidity:65.0%
 Test Distance:6.360m [K=1.0000]
 Remarks:

LUMINANCE LIMITATION CURVES

Test:U:24.00V I:0.2388A P:5.731W PF:1.000 Freq:0Hz Lamp Flux:35.7282x1 lm		
NAME: SF16-24v-5050-70-SPI-RGBW(2700K)-B	TYPE:	WEIGHT:
SPEC.:	DIM.: Length=1m	SERIAL No.:
MFR.: OLympia lighting	SUR.:	Shielding Angle:



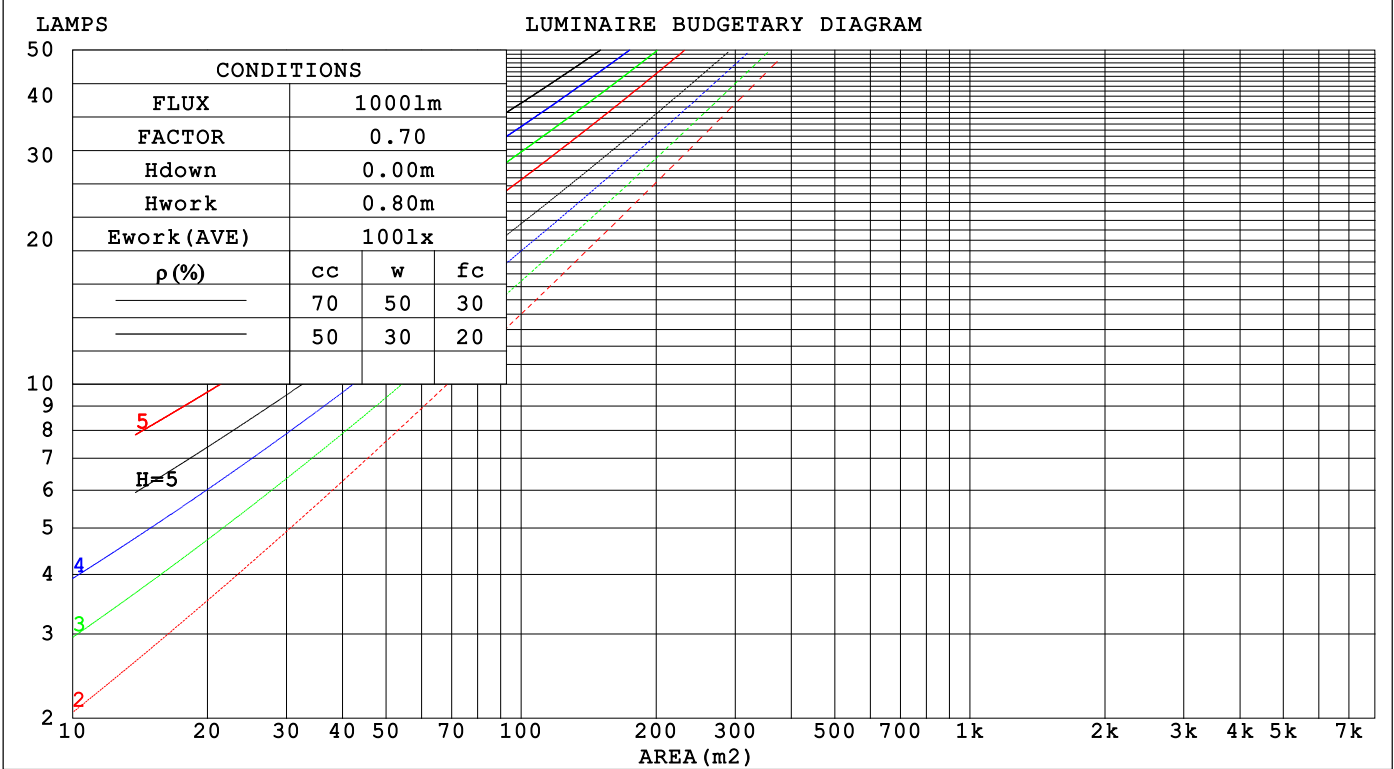
LUMINANCE cd/(m2)		
G (DEG)	C0/180	C90/270
85	862	637
80	720	609
75	682	613
70	670	614
65	666	620
60	668	628
55	672	637
50	678	646
45	685	657

C Range: 0 - 360DEG	γ Range: 0 - 180DEG
C Interval: 30.0DEG	γ Interval: 1.0DEG
Test Speed: HIGH	Test System:EVERFINE GO-2000B_V1 SYSTEM V2.00.488
Temperature:25.3℃	Humidity:65.0%
Operators:	Test Distance:6.360m [K=1.0000]
Test Date:2025-03-12	Remarks:

CU AND LUMINAIRE BUDGETARY ESTIMATE DIAGRAM

Test:U:24.00V I:0.2388A P:5.731W PF:1.000 Freq:0Hz		
Lamp Flux:35.7282x1 lm		
NAME: SF16-24v-5050-70-SPI-RGBW(2700K)-B	TYPE:	WEIGHT:
SPEC.:	DIM.: Length=1m	SERIAL No.:
MFR.: OLYMPIA lighting	SUR.:	Shielding Angle:

pcc	80%			70%			50%			30%			10%			0
p _w	50%	30%	10%	50%	30%	10%	50%	30%	10%	50%	30%	10%	50%	30%	10%	0
p _{fc}	20%			20%			20%			20%			20%			0
RCR	RCR:Room Cavity Ratio															



C Range: 0 - 360DEG
C Interval: 30.0DEG
Test Speed: HIGH
Temperature:25.3℃
Operators:
Test Date:2025-03-12

γ Range: 0 - 180DEG
γ Interval: 1.0DEG
Test System:EVERFINE GO-2000B_V1 SYSTEM V2.00.488
Humidity:65.0%
Test Distance:6.360m [K=1.0000]
Remarks:

WEC AND CCEC

Test:U:24.00V I:0.2388A P:5.731W PF:1.000 Freq:0Hz Lamp Flux:35.7282x1 lm		
NAME: SF16-24v-5050-70-SPI-RGBW(2700K)-B	TYPE:	WEIGHT:
SPEC.:	DIM.: Length=1m	SERIAL No.:
MFR.: OLYMPIA lighting	SUR.:	Shielding Angle:

pcc	80%			70%			50%			30%			10%			0
pw	50%	30%	10%	50%	30%	10%	50%	30%	10%	50%	30%	10%	50%	30%	10%	0
pfc	20%			20%			20%			20%			20%			0
RCR	RCR:Room Cavity Ratio						Wall Exitance Coefficients(WEC)									
0.0																
1.0	.326	.185	.059	.318	.181	.058	.302	.173	.055	.288	.166	.053	.275	.159	.051	
2.0	.301	.165	.051	.293	.162	.050	.280	.155	.048	.267	.150	.047	.255	.144	.045	
3.0	.276	.147	.044	.269	.144	.043	.257	.139	.042	.245	.134	.041	.235	.130	.040	
4.0	.253	.131	.039	.247	.129	.038	.236	.125	.037	.226	.121	.037	.216	.117	.036	
5.0	.233	.119	.034	.228	.117	.034	.218	.113	.033	.209	.110	.033	.200	.107	.032	
6.0	.215	.108	.031	.211	.106	.031	.202	.103	.030	.193	.101	.030	.186	.098	.029	
7.0	.200	.099	.028	.196	.097	.028	.188	.095	.027	.180	.092	.027	.173	.090	.026	
8.0	.186	.091	.026	.183	.090	.025	.175	.088	.025	.169	.085	.025	.162	.083	.024	
9.0	.174	.084	.024	.171	.083	.023	.165	.081	.023	.158	.079	.023	.153	.078	.022	
10.0	.164	.079	.022	.161	.078	.022	.155	.076	.021	.149	.074	.021	.144	.072	.021	

pcc	80%			70%			50%			30%			10%			0
pw	50%	30%	10%	50%	30%	10%	50%	30%	10%	50%	30%	10%	50%	30%	10%	0
pfc	20%			20%			20%			20%			20%			0
RCR	RCR:Room Cavity Ratio						Ceiling Cavity Exitance Coefficients (CCEC)									
0.0	.220	.220	.220	.188	.188	.188	.128	.128	.128	.074	.074	.074	.024	.024	.024	
1.0	.211	.186	.163	.181	.159	.140	.124	.110	.097	.071	.063	.056	.023	.020	.018	
2.0	.203	.162	.127	.174	.139	.110	.119	.096	.076	.069	.056	.045	.022	.018	.015	
3.0	.196	.144	.104	.168	.125	.090	.115	.087	.063	.066	.051	.037	.021	.016	.012	
4.0	.188	.131	.088	.161	.113	.076	.111	.079	.054	.064	.046	.032	.021	.015	.010	
5.0	.180	.121	.077	.155	.105	.067	.107	.073	.047	.062	.043	.028	.020	.014	.009	
6.0	.173	.113	.069	.149	.098	.060	.103	.068	.043	.060	.040	.025	.019	.013	.008	
7.0	.166	.106	.063	.143	.092	.055	.099	.064	.039	.057	.038	.023	.019	.012	.008	
8.0	.160	.100	.059	.137	.087	.052	.095	.061	.037	.055	.036	.022	.018	.012	.007	
9.0	.154	.095	.056	.132	.083	.049	.092	.058	.034	.053	.034	.021	.017	.011	.007	
10.0	.148	.091	.053	.127	.079	.046	.088	.056	.033	.052	.033	.020	.017	.011	.006	

C Range: 0 - 360DEG
C Interval: 30.0DEG
Test Speed: HIGH
Temperature:25.3℃
Operators:
Test Date:2025-03-12

γ Range: 0 - 180DEG
γ Interval: 1.0DEG
Test System:EVERFINE GO-2000B_V1 SYSTEM V2.00.488
Humidity:65.0%
Test Distance:6.360m [K=1.0000]
Remarks:

UGR(Unified Glare Rating) Table

Test:U:24.00V I:0.2388A P:5.731W PF:1.000 Freq:0Hz Lamp Flux:35.7282x1 lm											
NAME: SF16-24v-5050-70-SPI-RGBW(2700K)-B						TYPE:		WEIGHT:			
SPEC.:						DIM.: Length=1m		SERIAL No.:			
MFR.: OLympia lighting						SUR.:		Shielding Angle:			
ceiling/cavity	0.7	0.7	0.5	0.5	0.3	0.7	0.7	0.5	0.5	0.3	
walls	0.5	0.3	0.5	0.3	0.3	0.5	0.3	0.5	0.3	0.3	
working plane	0.2	0.2	0.2	0.2	0.2	0.2	0.2	0.2	0.2	0.2	
Room dimensions		Viewed crosswise					Viewed endwise				
x = 2H y = 2H	2H	22.9	24.3	23.2	24.6	24.9	22.6	24.1	22.9	24.4	24.7
	3H	24.6	26.0	25.0	26.3	26.6	24.3	25.7	24.7	26.0	26.3
	4H	25.4	26.7	25.8	27.1	27.4	25.1	26.4	25.4	26.7	27.0
	6H	26.1	27.4	26.5	27.7	28.1	25.7	26.9	26.1	27.2	27.6
	8H	26.5	27.6	26.9	28.0	28.4	25.9	27.1	26.3	27.5	27.8
	12H	26.7	27.9	27.1	28.2	28.6	26.1	27.2	26.5	27.6	28.0
4H	2H	23.5	24.8	23.9	25.1	25.5	23.3	24.6	23.7	24.9	25.3
	3H	25.5	26.6	25.9	27.0	27.4	25.2	26.3	25.6	26.7	27.1
	4H	26.4	27.5	26.9	27.9	28.3	26.1	27.1	26.5	27.5	28.0
	6H	27.3	28.2	27.8	28.6	29.1	26.9	27.8	27.3	28.2	28.7
	8H	27.7	28.6	28.2	29.0	29.5	27.2	28.0	27.6	28.5	29.0
	12H	28.0	28.8	28.5	29.3	29.8	27.4	28.2	27.9	28.7	29.2
8H	4H	26.8	27.6	27.2	28.1	28.5	26.5	27.4	27.0	27.8	28.3
	6H	27.8	28.6	28.3	29.0	29.6	27.5	28.2	28.0	28.7	29.2
	8H	28.4	29.0	28.9	29.5	30.0	27.9	28.5	28.4	29.0	29.6
	12H	28.9	29.4	29.4	29.9	30.5	28.3	28.8	28.8	29.3	29.9
12H	4H	26.8	27.6	27.3	28.0	28.5	26.5	27.3	27.0	27.8	28.3
	6H	27.9	28.6	28.5	29.1	29.6	27.6	28.2	28.1	28.7	29.3
	8H	28.5	29.1	29.1	29.6	30.2	28.1	28.6	28.6	29.2	29.7
Variations with the observer position at spacings(CIE Pub.117):											
S = 1.0H		+ 0.1 / - 0.2					+ 0.1 / - 0.2				
1.5H		+ 0.2 / - 0.3					+ 0.2 / - 0.3				
2.0H		+ 0.1 / - 0.3					+ 0.1 / - 0.3				

CIE Pub.117, 35.73 lm Total Lamp Luminous Flux Correct (8log(F/F0) = -11.6)
Area: 0.0165 m2

C Range: 0 - 360DEG
C Interval: 30.0DEG
Test Speed: HIGH
Temperature:25.3℃
Operators:
Test Date:2025-03-12

γ Range: 0 - 180DEG
γ Interval: 1.0DEG
Test System:EVERFINE GO-2000B_V1 SYSTEM V2.00.488
Humidity:65.0%
Test Distance:6.360m [K=1.0000]
Remarks:

UTILIZATION FACTORS TABLE

Test:U:24.00V I:0.2388A P:5.731W PF:1.000 Freq:0Hz Lamp Flux:35.7282x1 lm		
NAME: SF16-24v-5050-70-SPI-RGBW(2700K)-B	TYPE:	WEIGHT:
SPEC.:	DIM.: Length=1m	SERIAL No.:
MFR.: OLympia lighting	SUR.:	Shielding Angle:

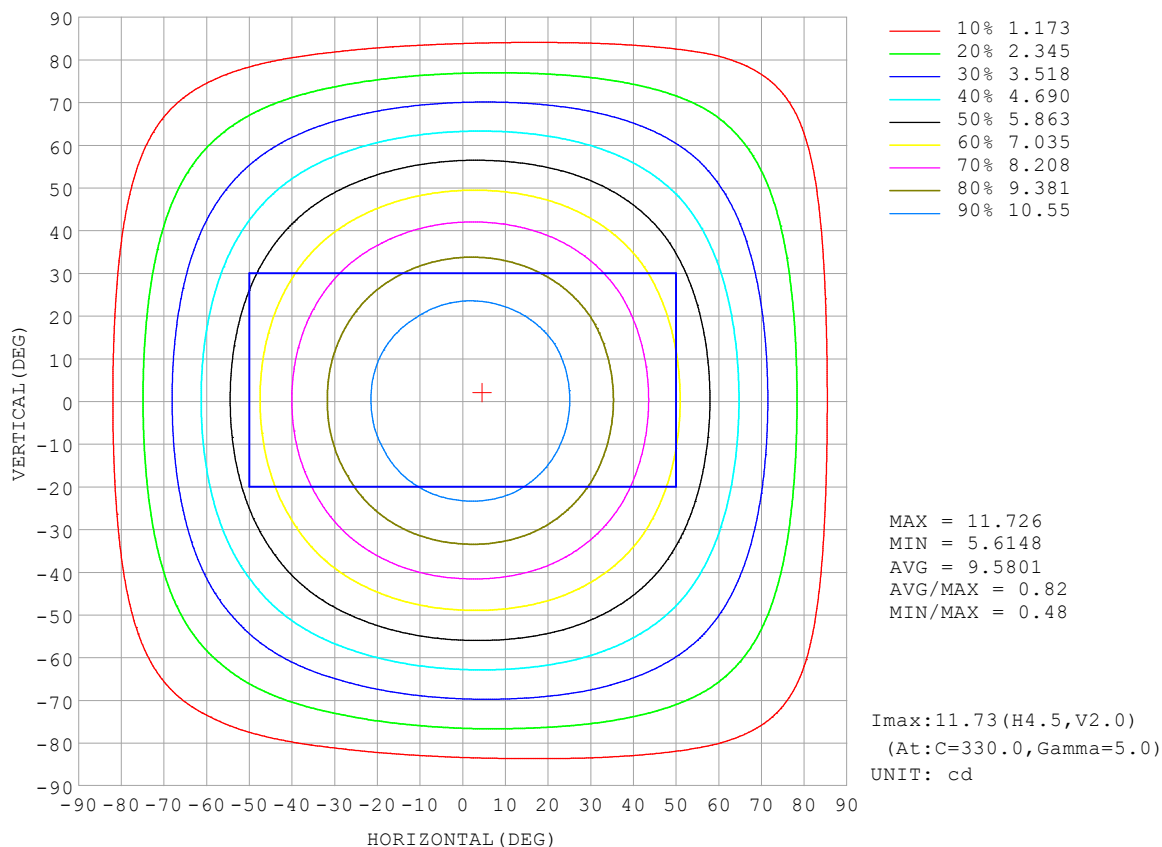
REFLECTANCE										
Ceiling	0.8	0.8	0.8	0.7	0.7	0.7	0.5	0.5	0.5	0
Walls	0.7	0.5	0.3	0.7	0.5	0.3	0.7	0.5	0.3	0
Working plane	0.2	0.2	0.2	0.2	0.2	0.2	0.2	0.2	0.2	0
ROOM INDEX	UTILIZATION FACTORS (PERCENT) $k(RI) \times RCR = 5$									
$k = 0.60$	56	44	37	55	44	37	53	43	37	30
0.80	66	54	46	64	53	46	62	52	45	38
1.00	74	62	55	72	62	54	70	63	54	46
1.25	81	70	62	79	69	62	76	67	61	53
1.50	86	75	68	84	74	68	80	72	66	58
2.00	93	84	77	91	82	76	87	80	74	65
2.50	97	88	82	94	87	81	90	84	79	69
3.00	100	93	87	98	91	86	93	88	83	73
4.00	104	98	93	102	96	92	97	92	88	78
5.00	107	102	97	104	99	95	99	95	92	81
ROOM INDEX	UF(total)									Direct
According to DIN EN 13032-2 2004			Suspended					SHRNOM = 1.25		

C Range: 0 - 360DEG
 C Interval: 30.0DEG
 Test Speed: HIGH
 Temperature: 25.3°C
 Operators:
 Test Date: 2025-03-12

γ Range: 0 - 180DEG
 γ Interval: 1.0DEG
 Test System: EVERFINE GO-2000B_V1 SYSTEM V2.00.488
 Humidity: 65.0%
 Test Distance: 6.360m [K=1.0000]
 Remarks:

ISOCANDELA DIAGRAM

Test:U:24.00V I:0.2388A P:5.731W PF:1.000 Freq:0Hz Lamp Flux:35.7282x1 lm		
NAME: SF16-24v-5050-70-SPI-RGBW(2700K)-B	TYPE:	WEIGHT:
SPEC.:	DIM.: Length=1m	SERIAL No.:
MFR.: OLympia lighting	SUR.:	Shielding Angle:

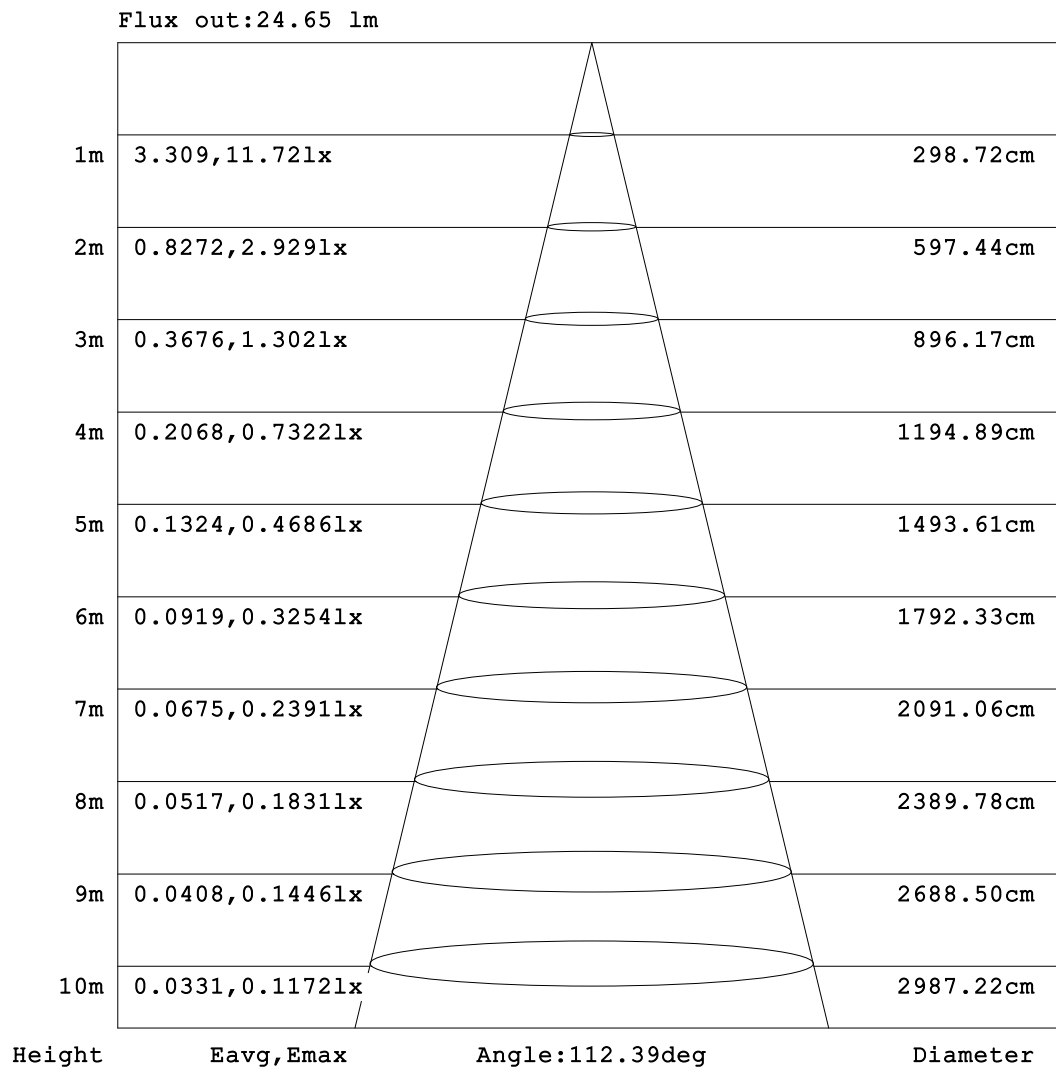


C Range: 0 - 360DEG
C Interval: 30.0DEG
Test Speed: HIGH
Temperature: 25.3°C
Operators:
Test Date: 2025-03-12

γ Range: 0 - 180DEG
γ Interval: 1.0DEG
Test System: EVERFINE GO-2000B_V1 SYSTEM V2.00.488
Humidity: 65.0%
Test Distance: 6.360m [K=1.0000]
Remarks:

AAI Figure

Test:U:24.00V I:0.2388A P:5.731W PF:1.000 Freq:0Hz Lamp Flux:35.7282x1 lm		
NAME: SF16-24v-5050-70-SPI-RGBW(2700K)-B	TYPE:	WEIGHT:
SPEC.:	DIM.: Length=1m	SERIAL No.:
MFR.: OLympia lighting	SUR.:	Shielding Angle:



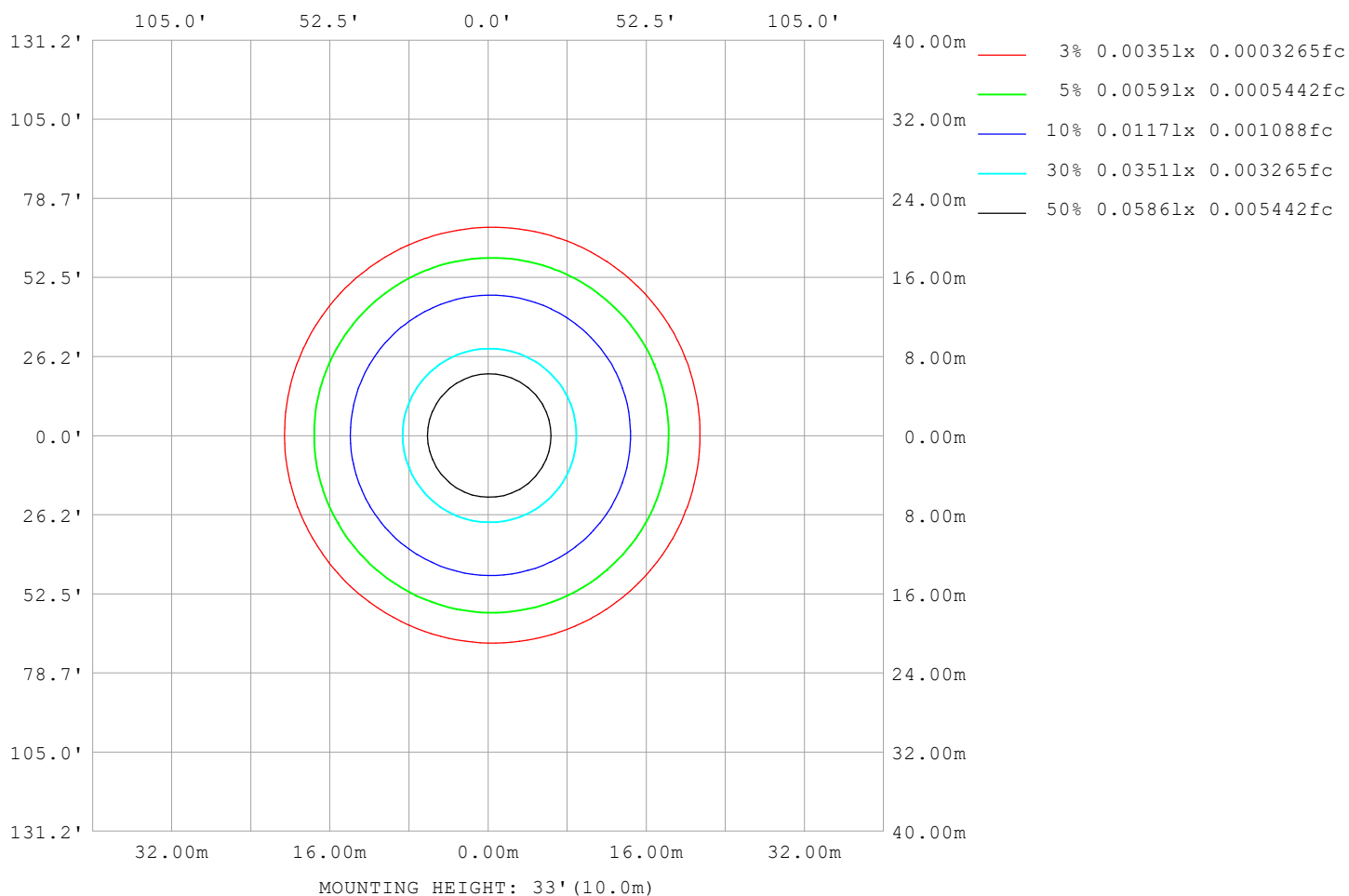
Note:The Curves indicate the illuminated area and the average illumination when the luminaire is at different distance.

C Range: 0 - 360DEG
C Interval: 30.0DEG
Test Speed: HIGH
Temperature:25.3℃
Operators:
Test Date:2025-03-12

γ Range: 0 - 180DEG
γ Interval: 1.0DEG
Test System:EVERFINE GO-2000B_V1 SYSTEM V2.00.488
Humidity:65.0%
Test Distance:6.360m [K=1.0000]
Remarks:

ISOLUX DIAGRAM

Test:U:24.00V I:0.2388A P:5.731W PF:1.000 Freq:0Hz Lamp Flux:35.7282x1 lm		
NAME: SF16-24v-5050-70-SPI-RGBW(2700K)-B	TYPE:	WEIGHT:
SPEC.:	DIM.: Length=1m	SERIAL No.:
MFR.: OLympia lighting	SUR.:	Shielding Angle:



C Range: 0 - 360DEG
C Interval: 30.0DEG
Test Speed: HIGH
Temperature: 25.3°C
Operators:
Test Date: 2025-03-12

γ Range: 0 - 180DEG
γ Interval: 1.0DEG
Test System: EVERFINE GO-2000B_V1 SYSTEM V2.00.488
Humidity: 65.0%
Test Distance: 6.360m [K=1.0000]
Remarks:

LED Avg.L Report

Test:U:24.00V I:0.2388A P:5.731W PF:1.000 Freq:0Hz Lamp Flux:35.7282x1 lm		
NAME: SF16-24v-5050-70-SPI-RGBW(2700K)-B	TYPE:	WEIGHT:
SPEC.:	DIM.: Length=1m	SERIAL No.:
MFR.: OLympia lighting	SUR.:	Shielding Angle:

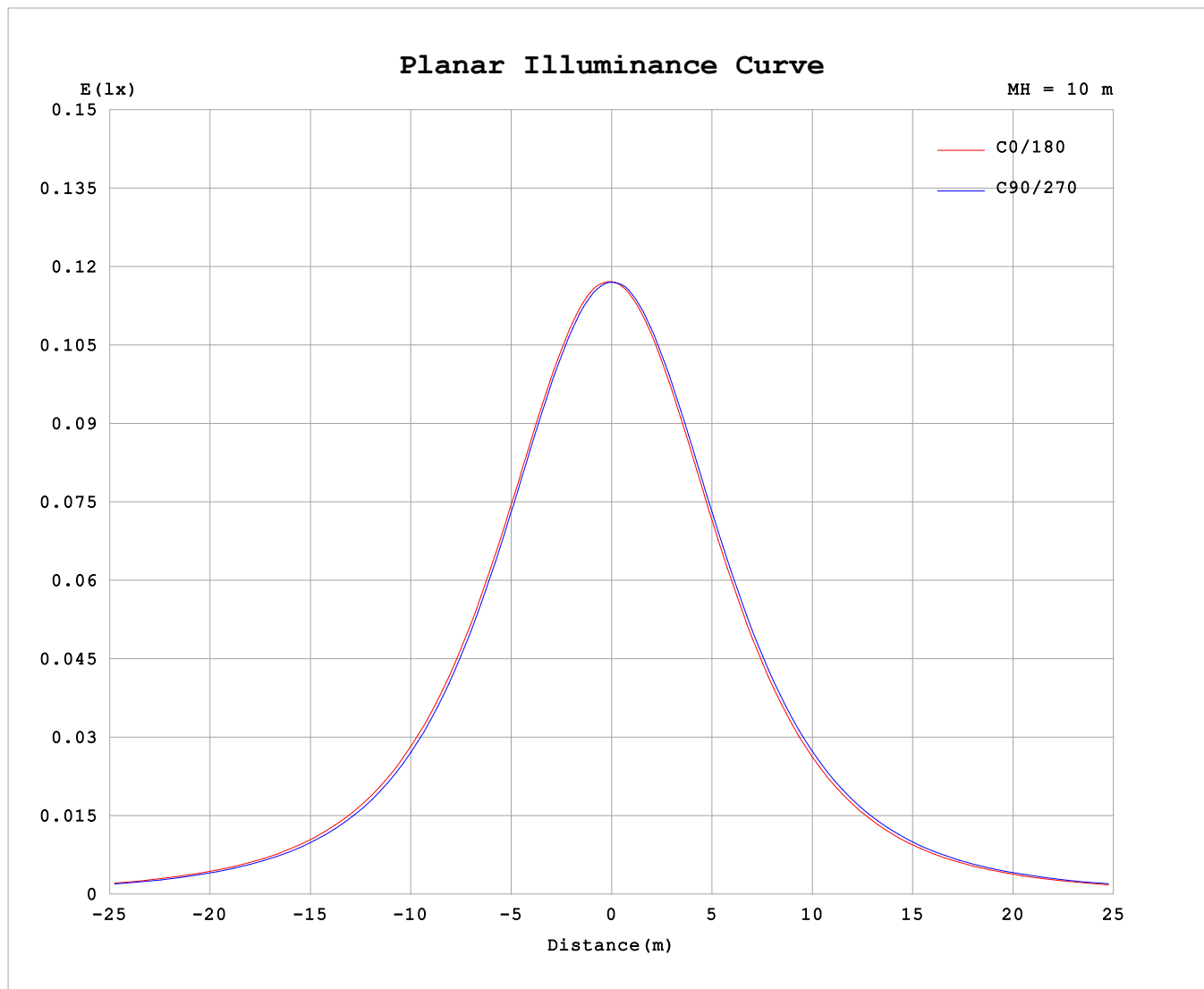
AvgL	cd/m2
L_0~180 (65) av	623
L_0~180 (75) av	613
L_0~180 (85) av	693
L_90~270 (65) av	624
L_90~270 (75) av	617
L_90~270 (85) av	655
L_45 (65) av	624
L_45 (75) av	615
L_45 (85) av	670

Standard: GB/T 29293-2012

C Range: 0 - 360DEG
C Interval: 30.0DEG
Test Speed: HIGH
Temperature:25.3℃
Operators:
Test Date:2025-03-12

γ Range: 0 - 180DEG
γ Interval: 1.0DEG
Test System:EVERFINE GO-2000B_V1 SYSTEM V2.00.488
Humidity:65.0%
Test Distance:6.360m [K=1.0000]
Remarks:

Planar Illuminance Curve



C Range: 0 - 360DEG
C Interval: 30.0DEG
Test Speed: HIGH
Temperature: 25.3 °C
Operators:
Test Date: 2025-03-12

γ Range: 0 - 180DEG
 γ Interval: 1.0DEG
Test System: EVERFINE GO-2000B_V1 SYSTEM V2.00.488
Humidity: 65.0%
Test Distance: 6.360m [K=1.0000]
Remarks:

LUMINOUS DISTRIBUTION INTENSITY DATA

Test:U:24.00V I:0.2388A P:5.731W PF:1.000 Freq:0Hz Lamp Flux:35.7282x1 lm		
NAME: SF16-24v-5050-70-SPI-RGBW(2700K)-B	TYPE:	WEIGHT:
SPEC.:	DIM.: Length=1m	SERIAL No.:
MFR.: OLympia lighting	SUR.:	Shielding Angle:

Table--1

UNIT: cd

C (DEG) γ (DEG)	0	30	60	90	120	150	180	210	240	270	300	330						
0	11.7	11.7	11.7	11.7	11.7	11.7	11.7	11.7	11.7	11.7	11.7	11.7						
5	11.7	11.7	11.7	11.7	11.6	11.6	11.6	11.6	11.6	11.7	11.7	11.7						
10	11.6	11.6	11.6	11.5	11.5	11.4	11.4	11.4	11.5	11.5	11.5	11.6						
15	11.3	11.3	11.3	11.2	11.2	11.1	11.1	11.1	11.2	11.3	11.3	11.4						
20	11.0	11.0	11.0	10.9	10.8	10.7	10.7	10.7	10.8	10.9	10.9	11.0						
25	10.6	10.5	10.5	10.4	10.3	10.2	10.2	10.2	10.3	10.4	10.5	10.6						
30	10.0	9.99	9.95	9.81	9.71	9.61	9.60	9.64	9.72	9.85	9.94	10.0						
35	9.42	9.38	9.31	9.17	9.05	8.94	8.94	8.98	9.07	9.21	9.32	9.43						
40	8.73	8.70	8.61	8.45	8.32	8.21	8.21	8.26	8.35	8.50	8.63	8.75						
45	7.99	7.95	7.84	7.67	7.53	7.42	7.42	7.48	7.59	7.74	7.88	8.00						
50	7.19	7.15	7.04	6.86	6.71	6.61	6.61	6.67	6.78	6.94	7.08	7.20						
55	6.36	6.32	6.21	6.03	5.86	5.76	5.77	5.83	5.94	6.10	6.26	6.38						
60	5.51	5.47	5.36	5.18	4.99	4.90	4.91	4.97	5.09	5.25	5.41	5.52						
65	4.64	4.60	4.50	4.32	4.13	4.03	4.05	4.11	4.23	4.38	4.55	4.66						
70	3.78	3.74	3.64	3.47	3.27	3.16	3.18	3.25	3.36	3.52	3.68	3.79						
75	2.91	2.88	2.77	2.62	2.41	2.31	2.32	2.39	2.50	2.66	2.81	2.93						
80	2.06	2.03	1.92	1.75	1.57	1.47	1.49	1.55	1.66	1.81	1.96	2.08						
85	1.24	1.18	1.07	0.92	0.76	0.73	0.75	0.79	0.83	0.97	1.12	1.24						
90	0.60	0.52	0.37	0.21	0.25	0.29	0.31	0.33	0.26	0.23	0.41	0.58						
95	0.22	0.15	0.17	0.21	0.19	0.17	0.14	0.17	0.20	0.21	0.20	0.21						
100	0.16	0.15	0.17	0.21	0.19	0.18	0.15	0.17	0.21	0.21	0.20	0.18						
105	0.16	0.16	0.17	0.22	0.19	0.19	0.16	0.17	0.22	0.21	0.21	0.17						
110	0.16	0.18	0.18	0.22	0.19	0.20	0.17	0.17	0.23	0.21	0.22	0.17						
115	0.17	0.18	0.19	0.23	0.20	0.21	0.18	0.18	0.23	0.22	0.22	0.18						
120	0.18	0.20	0.20	0.23	0.21	0.22	0.20	0.19	0.24	0.22	0.23	0.18						
125	0.19	0.22	0.21	0.24	0.21	0.23	0.20	0.20	0.24	0.22	0.23	0.19						
130	0.20	0.23	0.22	0.25	0.23	0.23	0.21	0.20	0.25	0.23	0.23	0.19						
135	0.21	0.24	0.23	0.25	0.23	0.24	0.22	0.22	0.25	0.23	0.24	0.20						
140	0.22	0.24	0.24	0.26	0.24	0.25	0.23	0.22	0.25	0.24	0.24	0.21						
145	0.23	0.26	0.25	0.27	0.25	0.25	0.24	0.23	0.26	0.24	0.25	0.21						
150	0.23	0.26	0.26	0.28	0.25	0.26	0.25	0.24	0.27	0.25	0.25	0.22						
155	0.25	0.27	0.27	0.28	0.26	0.27	0.27	0.24	0.27	0.25	0.26	0.23						
160	0.25	0.28	0.27	0.28	0.26	0.28	0.27	0.25	0.27	0.26	0.27	0.24						
165	0.27	0.28	0.28	0.28	0.27	0.28	0.27	0.26	0.28	0.26	0.28	0.25						
170	0.27	0.28	0.28	0.28	0.27	0.28	0.27	0.27	0.28	0.27	0.28	0.26						
175	0.28	0.28	0.28	0.28	0.27	0.28	0.27	0.27	0.28	0.27	0.28	0.27						
180	0.28	0.28	0.28	0.28	0.28	0.28	0.27	0.28	0.28	0.28	0.28	0.27						

C Range: 0 - 360DEG

C Interval: 30.0DEG

Test Speed: HIGH

Temperature:25.3℃

Operators:

Test Date:2025-03-12

γ Range: 0 - 180DEG

γ Interval: 1.0DEG

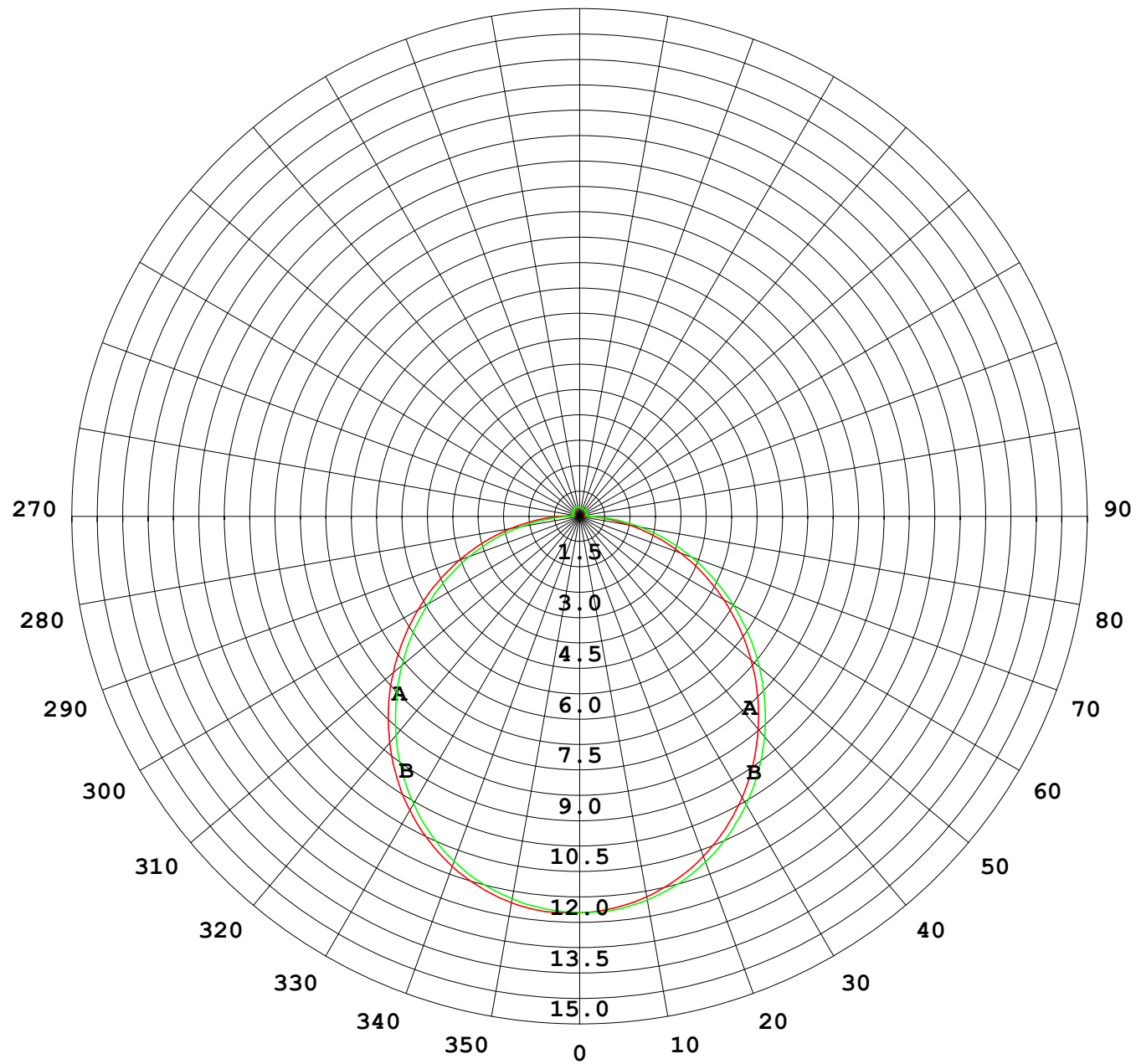
Test System:EVERFINE GO-2000B_V1 SYSTEM V2.00.488

Humidity:65.0%

Test Distance:6.360m [K=1.0000]

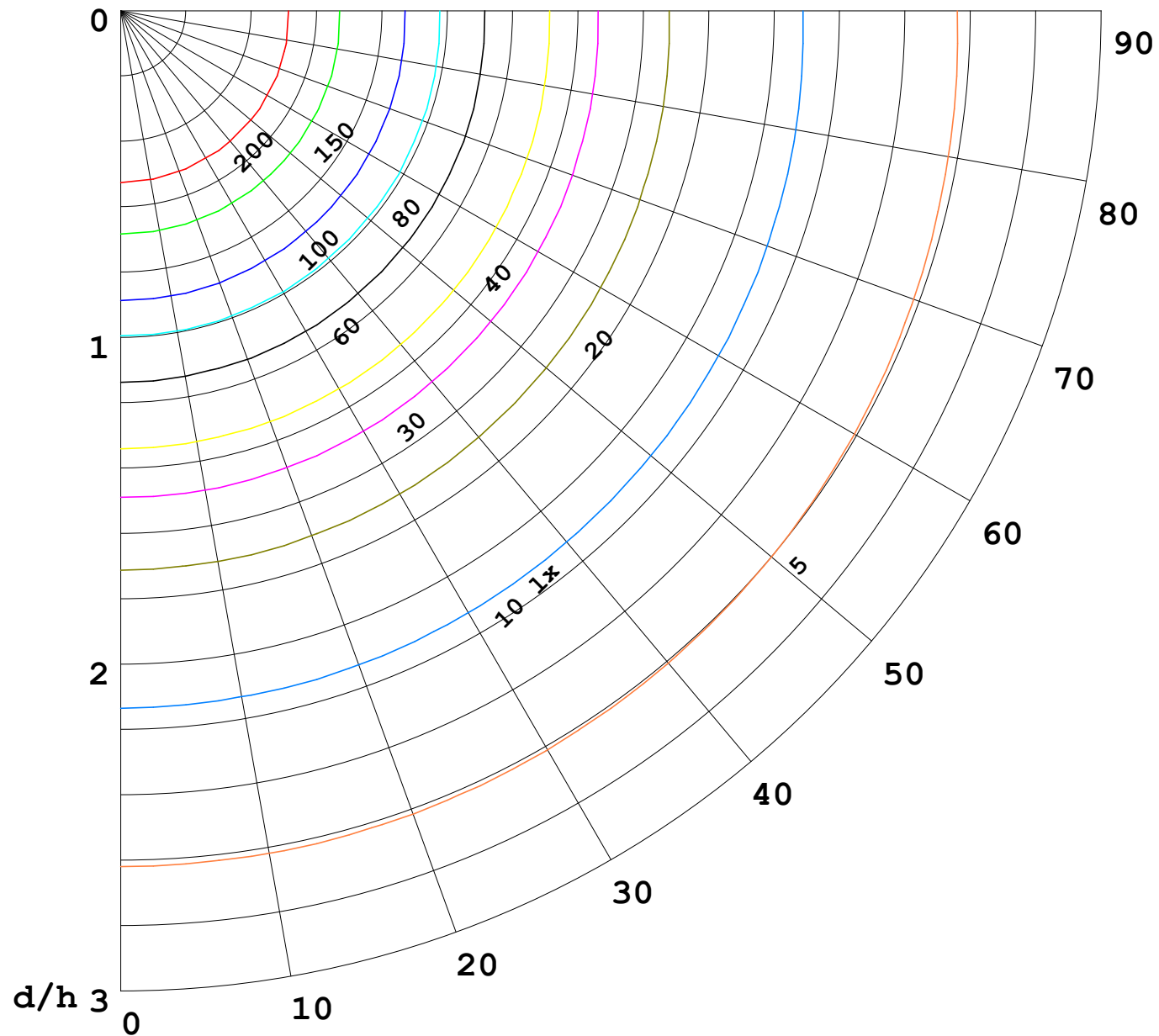
Remarks:

I (cd)



1000 lm

$\kappa = 1$



F = 1000 lm
 K = 0.7
 Hcc = 0.8 m
 Hfc = 0.0 m
 Eave = 100 lx

	Pcc	Pw	Pfc
————	70	50	30
————	50	30	20

