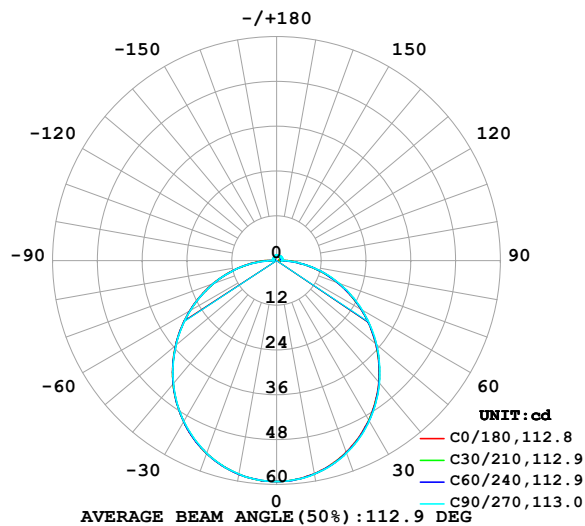


LUMINAIRE PHOTOMETRIC TEST REPORT

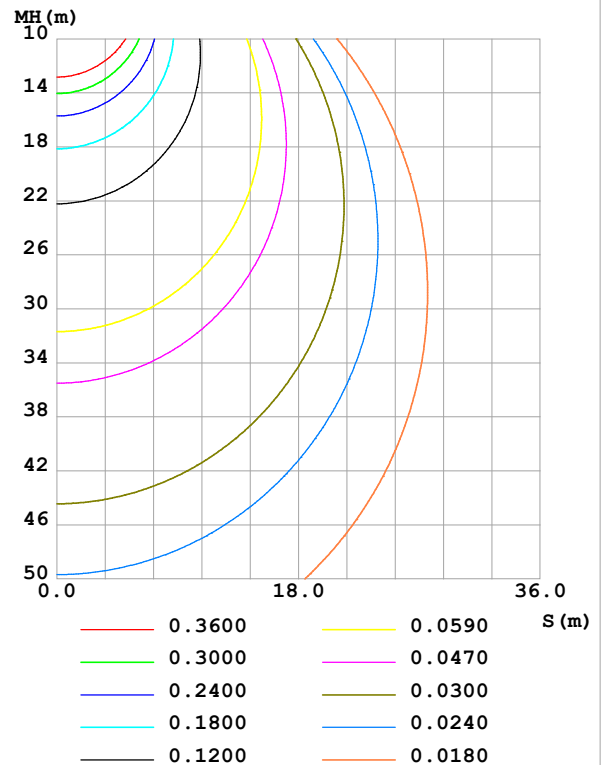
Test:U:24.00V I:0.4605A P:11.05W PF:1.000 Freq:0Hz Lamp Flux:182.201x1 lm		
NAME: SF16-24V-5050-70-SPI-RGBW(3000K)-W	TYPE:	WEIGHT:
SPEC.:	DIM.: Length=1m	SERIAL No.:
MFR.: OLympia lighting	SUR.:	Shielding Angle:

DATA OF LAMP		PHOTOMETRIC DATA				Eff: 16.49 lm/W
MODEL	5050	I _{max} (cd)	59.20	S/MH(C0/180)	1.25	
NOMINAL POWER(W)		LOR(%)	100.0	S/MH(C90/270)	1.25	
RATED VOLTAGE(V)	24	TOTAL FLUX(lm)	182.20	η UP,DN(C0-180)	2.3,47.7	
NOMINAL FLUX(lm)	182.201	CIE CLASS	DIRECT	η UP,DN(C180-360)	1.9,48.1	
LAMPS INSIDE	1	η up (%)	4.1	CIBSE SHR NOM	1.25	
TEST VOLTAGE(V)		η down (%)	95.9	CIBSE SHR MAX	1.35	

LUMINOUS INTENSITY DISTRIBUTION DIAGRAM



C0 PLANE ISOLUX DIAGRAM (UNIT:lx)



C Range: 0 - 360DEG
C Interval: 30.0DEG
Test Speed: HIGH
Temperature:25.3℃
Operators:
Test Date:2025-03-17

γ Range: 0 - 180DEG
γ Interval: 1.0DEG
Test System:EVERFINE GO-2000B_V1 SYSTEM V2.00.488
Humidity:65.0%
Test Distance:6.360m [K=1.0000]
Remarks:

ZONAL FLUX DIAGRAM

ZONAL FLUX DIAGRAM:

γ	C0	C45	C90	C135	C180	C225	C270	C315	γ	Φ zone	Φ total	%lum, lamp
10	57.99	58.09	58.12	58.14	58.16	58.14	58.12	58.11	0- 10	5.599	5.599	3.07,3.07
20	54.62	54.77	54.88	54.93	54.96	54.94	54.89	54.85	10- 20	16.01	21.61	11.9,11.9
30	49.40	49.54	49.65	49.80	49.85	49.82	49.76	49.68	20- 30	24.19	45.80	25.1,25.1
40	42.60	42.72	42.87	43.06	43.17	43.12	43.03	42.95	30- 40	29.08	74.88	41.1,41.1
50	34.70	34.81	34.97	35.17	35.35	35.27	35.17	35.10	40- 50	30.18	105.1	57.7,57.7
60	26.15	26.27	26.46	26.66	26.88	26.76	26.69	26.59	50- 60	27.60	132.7	72.8,72.8
70	17.42	17.55	17.76	17.94	18.16	18.02	17.99	17.84	60- 70	21.98	154.7	84.9,84.9
80	8.781	8.903	9.153	9.299	9.526	9.361	9.355	9.162	70- 80	14.24	168.9	92.7,92.7
90	2.491	2.142	1.366	2.298	2.819	2.169	1.168	2.097	80- 90	5.761	174.7	95.9,95.9
100	0.8163	1.156	1.475	1.141	0.7184	0.8256	1.111	0.8269	90-100	1.319	176.0	96.6,96.6
110	0.9056	1.243	1.550	1.244	0.8280	0.9136	1.184	0.9048	100-110	1.106	177.1	97.2,97.2
120	1.024	1.305	1.542	1.308	0.9347	0.9929	1.181	0.9553	110-120	1.114	178.2	97.8,97.8
130	1.136	1.350	1.519	1.357	1.056	1.072	1.126	1.032	120-130	1.056	179.2	98.4,98.4
140	1.229	1.396	1.521	1.401	1.171	1.166	1.114	1.080	130-140	0.9516	180.2	98.9,98.9
150	1.321	1.432	1.521	1.440	1.281	1.273	1.221	1.183	140-150	0.8124	181.0	99.3,99.3
160	1.408	1.465	1.516	1.471	1.387	1.384	1.348	1.333	150-160	0.6347	181.6	99.7,99.7
170	1.483	1.495	1.521	1.499	1.480	1.481	1.475	1.473	160-170	0.4103	182.1	99.9,99.9
180	1.514	1.518	1.530	1.521	1.511	1.521	1.530	1.521	170-180	0.1435	182.2	100,100
DEG	LUMINOUS INTENSITY:cd									UNIT:lm		

Conical surface Flux(90deg): 90.078 lm

%lum = 49.4%

%lamp = 49.4%

Conical surface Flux(130deg): 144.52 lm

%lum = 79.3%

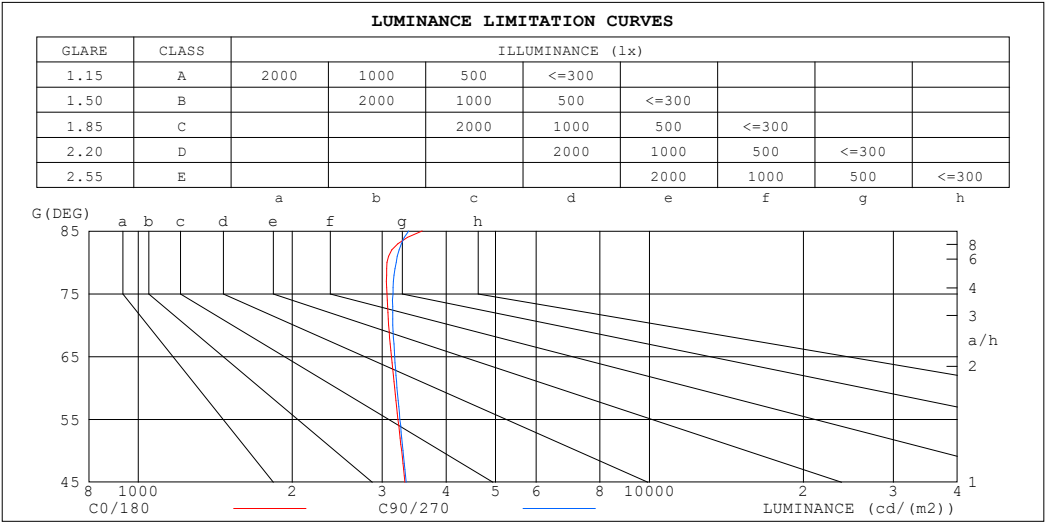
%lamp = 79.3%

C Range: 0 - 360DEG
 C Interval: 30.0DEG
 Test Speed: HIGH
 Temperature:25.3℃
 Operators:
 Test Date:2025-03-17

γ Range: 0 - 180DEG
 γ Interval: 1.0DEG
 Test System:EVERFINE GO-2000B_V1 SYSTEM V2.00.488
 Humidity:65.0%
 Test Distance:6.360m [K=1.0000]
 Remarks:

LUMINANCE LIMITATION CURVES

Test:U:24.00V I:0.4605A P:11.05W PF:1.000 Freq:0Hz Lamp Flux:182.201x1 lm		
NAME: SF16-24V-5050-70-SPI-RGBW(3000K)-W	TYPE:	WEIGHT:
SPEC.:	DIM.: Length=1m	SERIAL No.:
MFR.: OLympia lighting	SUR.:	Shielding Angle:



LUMINANCE cd/(m2)		
G (DEG)	C0/180	C90/270
85	3592	3380
80	3066	3194
75	3063	3148
70	3088	3147
65	3127	3171
60	3172	3207
55	3221	3249
50	3274	3296
45	3323	3343

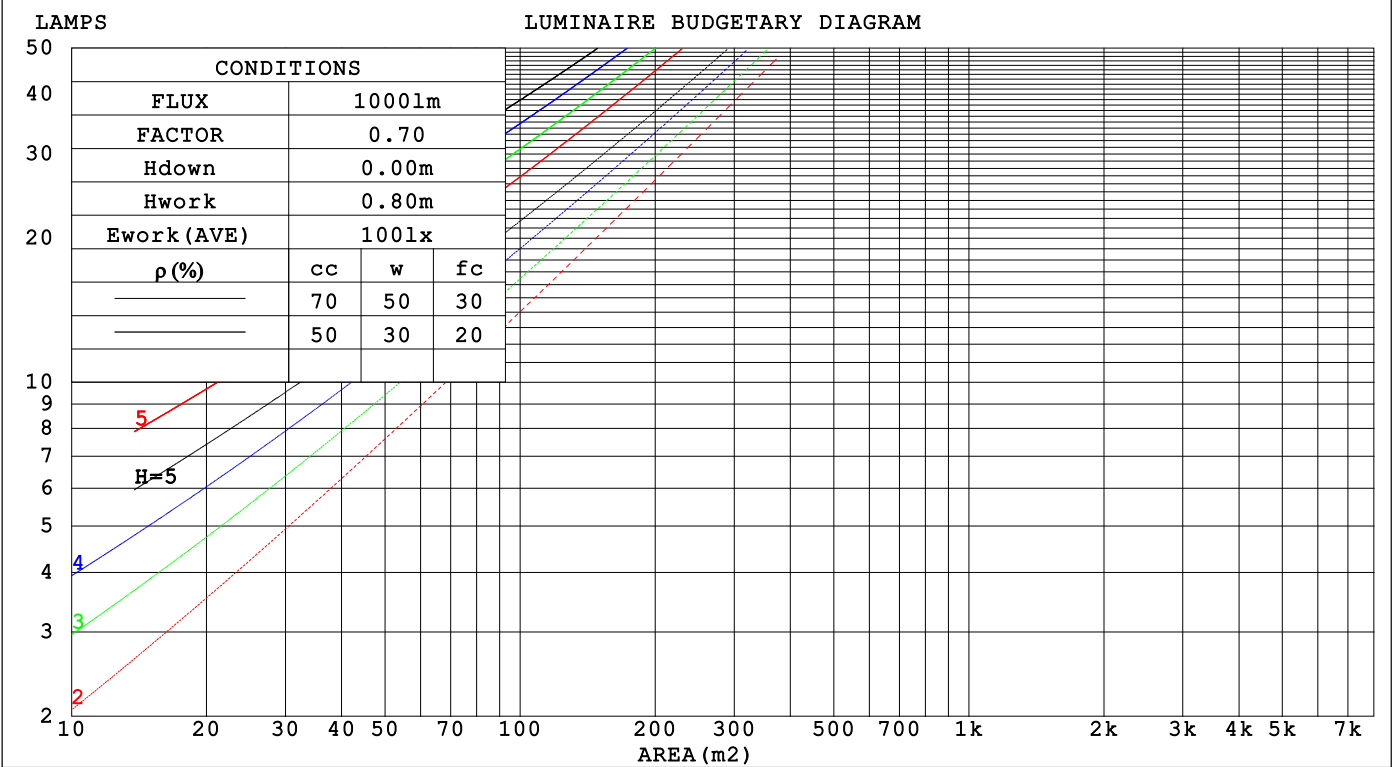
C Range: 0 - 360DEG
C Interval: 30.0DEG
Test Speed: HIGH
Temperature:25.3℃
Operators:
Test Date:2025-03-17

γ Range: 0 - 180DEG
γ Interval: 1.0DEG
Test System:EVERFINE GO-2000B_V1 SYSTEM V2.00.488
Humidity:65.0%
Test Distance:6.360m [K=1.0000]
Remarks:

CU AND LUMINAIRE BUDGETARY ESTIMATE DIAGRAM

Test:U:24.00V I:0.4605A P:11.05W PF:1.000 Freq:0Hz		
Lamp Flux:182.20lx1 lm		
NAME: SF16-24V-5050-70-SPI-RGBW(3000K)-W	TYPE:	WEIGHT:
SPEC.:	DIM.: Length=1m	SERIAL No.:
MFR.: OLYMPIA lighting	SUR.:	Shielding Angle:

pcc	80%			70%			50%			30%			10%			0
pw	50%	30%	10%	50%	30%	10%	50%	30%	10%	50%	30%	10%	50%	30%	10%	0
pfc	20%			20%			20%			20%			20%			0
RCR	RCR:Room Cavity Ratio															

C Range: 0 - 360DEG
C Interval: 30.0DEG
Test Speed: HIGH
Temperature:25.3℃
Operators:
Test Date:2025-03-17γ Range: 0 - 180DEG
γ Interval: 1.0DEG
Test System:EVERFINE GO-2000B_V1 SYSTEM V2.00.488
Humidity:65.0%
Test Distance:6.360m [K=1.0000]
Remarks:

WEC AND CCEC

Test:U:24.00V I:0.4605A P:11.05W PF:1.000 Freq:0Hz Lamp Flux:182.201x1 lm		
NAME: SF16-24V-5050-70-SPI-RGBW(3000K)-W	TYPE:	WEIGHT:
SPEC.:	DIM.: Length=1m	SERIAL No.:
MFR.: OLympia lighting	SUR.:	Shielding Angle:

pcc	80%			70%			50%			30%			10%			0														
pw	50%	30%	10%	50%	30%	10%	50%	30%	10%	50%	30%	10%	50%	30%	10%	0														
pfc	20%			20%			20%			20%			20%			0														
RCR	RCR:Room Cavity Ratio															Wall Exitance Coefficients(WEC)														
0.0																														
1.0	.328	.186	.059	.319	.182	.058	.304	.174	.056	.289	.167	.054	.276	.160	.052															
2.0	.302	.165	.051	.294	.162	.050	.280	.156	.048	.267	.150	.047	.255	.145	.046															
3.0	.276	.147	.044	.270	.144	.043	.257	.139	.042	.246	.135	.041	.235	.130	.040															
4.0	.253	.132	.039	.247	.129	.038	.236	.125	.037	.226	.121	.037	.216	.118	.036															
5.0	.233	.119	.034	.228	.117	.034	.218	.113	.033	.209	.110	.033	.200	.107	.032															
6.0	.215	.108	.031	.211	.106	.031	.202	.103	.030	.193	.101	.030	.186	.098	.029															
7.0	.200	.099	.028	.196	.098	.028	.188	.095	.027	.180	.092	.027	.173	.090	.026															
8.0	.187	.091	.026	.183	.090	.025	.175	.088	.025	.169	.085	.025	.162	.083	.024															
9.0	.175	.084	.024	.171	.083	.023	.165	.081	.023	.158	.079	.023	.152	.077	.022															
10.0	.164	.079	.022	.161	.078	.022	.155	.076	.021	.149	.074	.021	.144	.072	.021															

pcc	80%			70%			50%			30%			10%			0
pw	50%	30%	10%	50%	30%	10%	50%	30%	10%	50%	30%	10%	50%	30%	10%	0
pfc	20%			20%			20%			20%			20%			0
RCR	RCR:Room Cavity Ratio						Ceiling Cavity Exitance Coefficients (CCEC)									
0.0	.222	.222	.222	.190	.190	.190	.130	.130	.130	.074	.074	.074	.024	.024	.024	
1.0	.213	.188	.165	.183	.161	.142	.125	.111	.098	.072	.064	.057	.023	.021	.018	
2.0	.206	.164	.129	.176	.141	.111	.121	.098	.078	.070	.057	.046	.022	.018	.015	
3.0	.198	.147	.106	.170	.126	.092	.116	.088	.064	.067	.051	.038	.022	.017	.012	
4.0	.190	.133	.090	.163	.115	.078	.112	.080	.055	.065	.047	.033	.021	.015	.011	
5.0	.183	.123	.079	.157	.107	.069	.108	.074	.049	.063	.044	.029	.020	.014	.010	
6.0	.175	.115	.071	.151	.099	.062	.104	.070	.044	.060	.041	.026	.019	.013	.009	
7.0	.169	.108	.066	.145	.094	.057	.100	.066	.041	.058	.039	.024	.019	.013	.008	
8.0	.162	.102	.061	.139	.089	.053	.096	.062	.038	.056	.037	.023	.018	.012	.007	
9.0	.156	.097	.058	.134	.085	.050	.093	.059	.036	.054	.035	.021	.018	.012	.007	
10.0	.150	.093	.055	.129	.081	.048	.090	.057	.034	.052	.034	.020	.017	.011	.007	

C Range: 0 - 360DEG
C Interval: 30.0DEG
Test Speed: HIGH
Temperature:25.3℃
Operators:
Test Date:2025-03-17

γ Range: 0 - 180DEG
γ Interval: 1.0DEG
Test System:EVERFINE GO-2000B_V1 SYSTEM V2.00.488
Humidity:65.0%
Test Distance:6.360m [K=1.0000]
Remarks:

UGR(Unified Glare Rating) Table

Test:U:24.00V I:0.4605A P:11.05W PF:1.000 Freq:0Hz Lamp Flux:182.20lx1 lm											
NAME: SF16-24V-5050-70-SPI-RGBW(3000K)-W						TYPE:		WEIGHT:			
SPEC.:						DIM.: Length=1m		SERIAL No.:			
MFR.: OLympia lighting						SUR.:		Shielding Angle:			
ceiling/cavity	0.7	0.7	0.5	0.5	0.3	0.7	0.7	0.5	0.5	0.3	
walls	0.5	0.3	0.5	0.3	0.3	0.5	0.3	0.5	0.3	0.3	
working plane	0.2	0.2	0.2	0.2	0.2	0.2	0.2	0.2	0.2	0.2	
Room dimensions		Viewed crosswise					Viewed endwise				
x = 2H y = 2H	2H	22.7	24.1	23.0	24.4	24.7	22.7	24.2	23.0	24.4	24.7
	3H	24.3	25.7	24.7	26.0	26.3	24.4	25.8	24.7	26.1	26.4
	4H	25.1	26.4	25.4	26.7	27.0	25.1	26.4	25.5	26.8	27.1
	6H	25.7	26.9	26.1	27.3	27.6	25.8	27.0	26.2	27.4	27.7
	8H	25.9	27.1	26.3	27.5	27.8	26.0	27.2	26.4	27.6	28.0
	12H	26.1	27.3	26.6	27.7	28.0	26.2	27.4	26.6	27.7	28.1
4H	2H	23.3	24.6	23.7	24.9	25.3	23.3	24.6	23.7	24.9	25.3
	3H	25.2	26.3	25.6	26.7	27.1	25.2	26.3	25.6	26.7	27.1
	4H	26.0	27.1	26.5	27.5	27.9	26.1	27.1	26.5	27.5	28.0
	6H	26.8	27.7	27.3	28.2	28.6	26.9	27.8	27.3	28.2	28.7
	8H	27.1	28.0	27.6	28.4	28.9	27.2	28.1	27.7	28.5	29.0
	12H	27.4	28.2	27.9	28.7	29.2	27.5	28.3	28.0	28.7	29.2
8H	4H	26.4	27.2	26.9	27.7	28.2	26.4	27.3	26.9	27.7	28.2
	6H	27.3	28.1	27.8	28.5	29.0	27.4	28.1	27.9	28.6	29.1
	8H	27.8	28.4	28.3	28.9	29.4	27.8	28.5	28.4	29.0	29.5
	12H	28.2	28.7	28.7	29.3	29.8	28.2	28.8	28.8	29.3	29.9
12H	4H	26.4	27.2	26.9	27.7	28.2	26.5	27.3	26.9	27.7	28.2
	6H	27.4	28.1	27.9	28.6	29.1	27.5	28.1	28.0	28.6	29.2
	8H	27.9	28.5	28.5	29.0	29.6	28.0	28.5	28.5	29.1	29.6
Variations with the observer position at spacings(CIE Pub.117):											
S = 1.0H		+ 0.1 / - 0.2					+ 0.1 / - 0.2				
1.5H		+ 0.2 / - 0.3					+ 0.2 / - 0.3				
2.0H		+ 0.1 / - 0.3					+ 0.1 / - 0.3				

CIE Pub.117, 182.2 lm Total Lamp Luminous Flux Correct (8log(F/F0) = -5.9)
Area: 0.0165 m2

C Range: 0 - 360DEG
C Interval: 30.0DEG
Test Speed: HIGH
Temperature:25.3℃
Operators:
Test Date:2025-03-17

γ Range: 0 - 180DEG
γ Interval: 1.0DEG
Test System:EVERFINE GO-2000B_V1 SYSTEM V2.00.488
Humidity:65.0%
Test Distance:6.360m [K=1.0000]
Remarks:

UTILIZATION FACTORS TABLE

Test:U:24.00V I:0.4605A P:11.05W PF:1.000 Freq:0Hz Lamp Flux:182.20lx1 lm		
NAME: SF16-24V-5050-70-SPI-RGBW(3000K)-W	TYPE:	WEIGHT:
SPEC.:	DIM.: Length=1m	SERIAL No.:
MFR.: OLympia lighting	SUR.:	Shielding Angle:

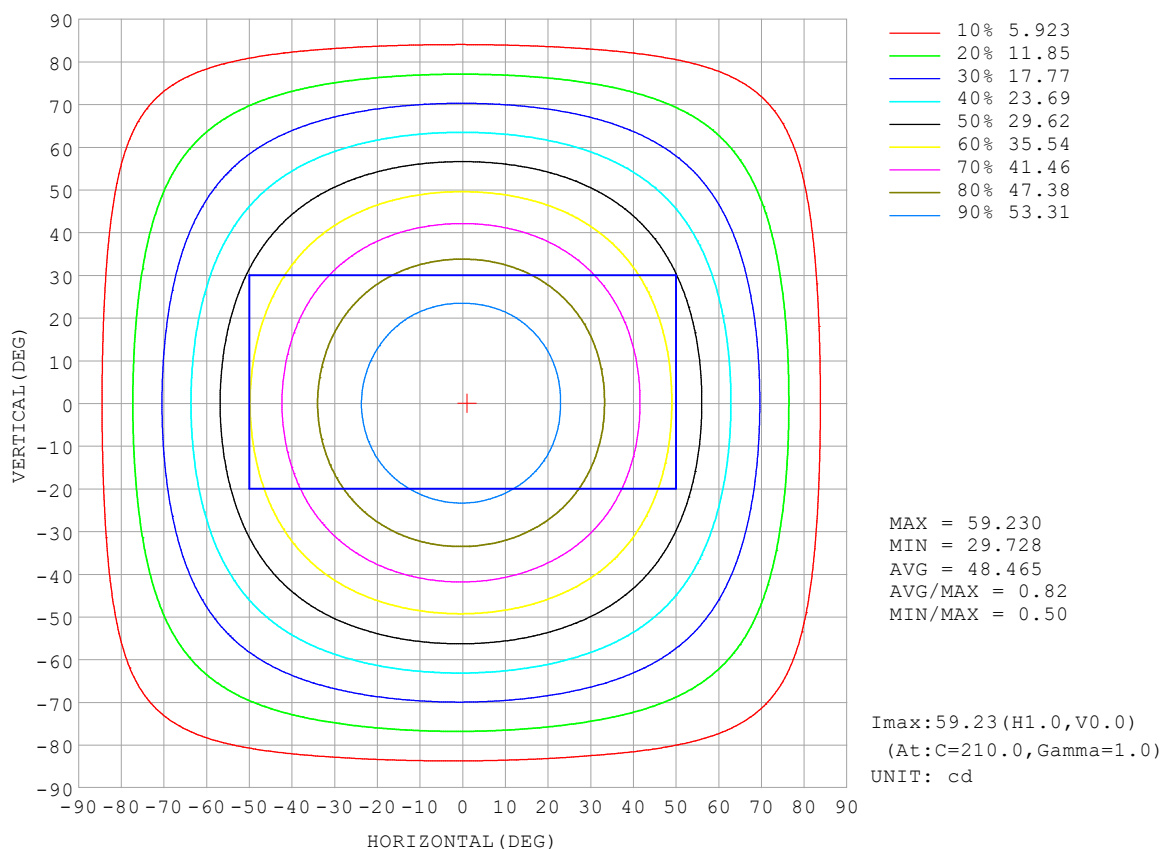
REFLECTANCE										
Ceiling	0.8	0.8	0.8	0.7	0.7	0.7	0.5	0.5	0.5	0
Walls	0.7	0.5	0.3	0.7	0.5	0.3	0.7	0.5	0.3	0
Working plane	0.2	0.2	0.2	0.2	0.2	0.2	0.2	0.2	0.2	0
ROOM INDEX	UTILIZATION FACTORS (PERCENT) $k(RI) \times RCR = 5$									
$k = 0.60$	55	44	37	55	43	37	53	43	36	30
0.80	65	53	46	64	53	46	62	52	45	38
1.00	74	62	54	72	61	54	69	62	53	46
1.25	81	70	62	79	69	62	76	67	61	53
1.50	86	75	68	84	74	67	80	72	66	58
2.00	92	83	77	90	82	76	86	79	74	65
2.50	97	88	82	94	87	81	90	83	78	69
3.00	100	93	87	97	91	85	93	87	83	73
4.00	104	98	93	101	96	91	96	92	88	78
5.00	107	101	97	104	99	95	99	95	91	81
ROOM INDEX	UF (total)									Direct
According to DIN EN 13032-2 2004			Suspended					SHRNOM = 1.25		

C Range: 0 - 360DEG
 C Interval: 30.0DEG
 Test Speed: HIGH
 Temperature: 25.3 °C
 Operators:
 Test Date: 2025-03-17

γ Range: 0 - 180DEG
 γ Interval: 1.0DEG
 Test System: EVERFINE GO-2000B_V1 SYSTEM V2.00.488
 Humidity: 65.0%
 Test Distance: 6.360m [K=1.0000]
 Remarks:

ISOCANDELA DIAGRAM

Test:U:24.00V I:0.4605A P:11.05W PF:1.000 Freq:0Hz Lamp Flux:182.20lx1 lm		
NAME: SF16-24V-5050-70-SPI-RGBW(3000K)-W	TYPE:	WEIGHT:
SPEC.:	DIM.: Length=1m	SERIAL No.:
MFR.: OLympia lighting	SUR.:	Shielding Angle:

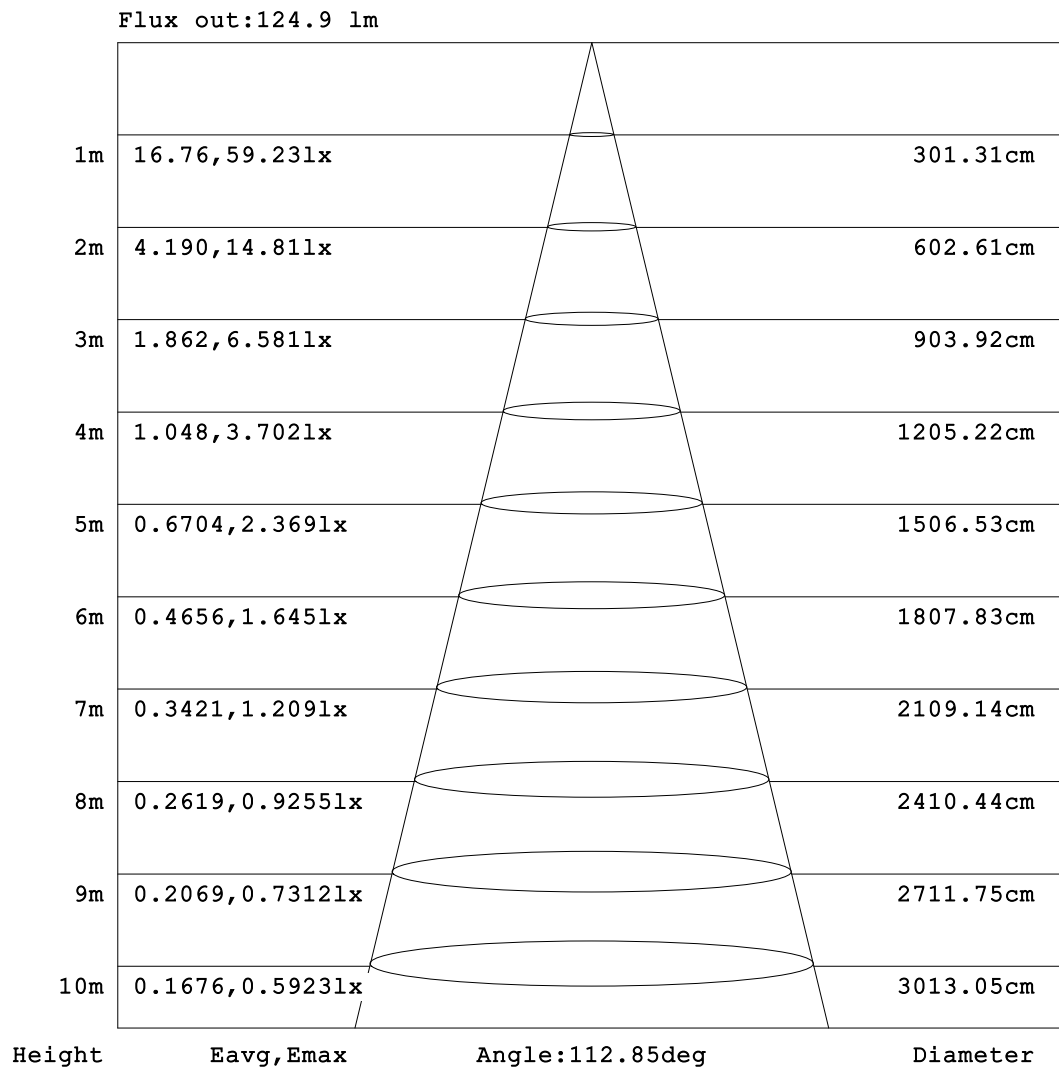


C Range: 0 - 360DEG
C Interval: 30.0DEG
Test Speed: HIGH
Temperature: 25.3°C
Operators:
Test Date: 2025-03-17

γ Range: 0 - 180DEG
γ Interval: 1.0DEG
Test System: EVERFINE GO-2000B_V1 SYSTEM V2.00.488
Humidity: 65.0%
Test Distance: 6.360m [K=1.0000]
Remarks:

AAI Figure

Test:U:24.00V I:0.4605A P:11.05W PF:1.000 Freq:0Hz Lamp Flux:182.20lx1 lm		
NAME: SF16-24V-5050-70-SPI-RGBW(3000K)-W	TYPE:	WEIGHT:
SPEC.:	DIM.: Length=1m	SERIAL No.:
MFR.: OLympia lighting	SUR.:	Shielding Angle:



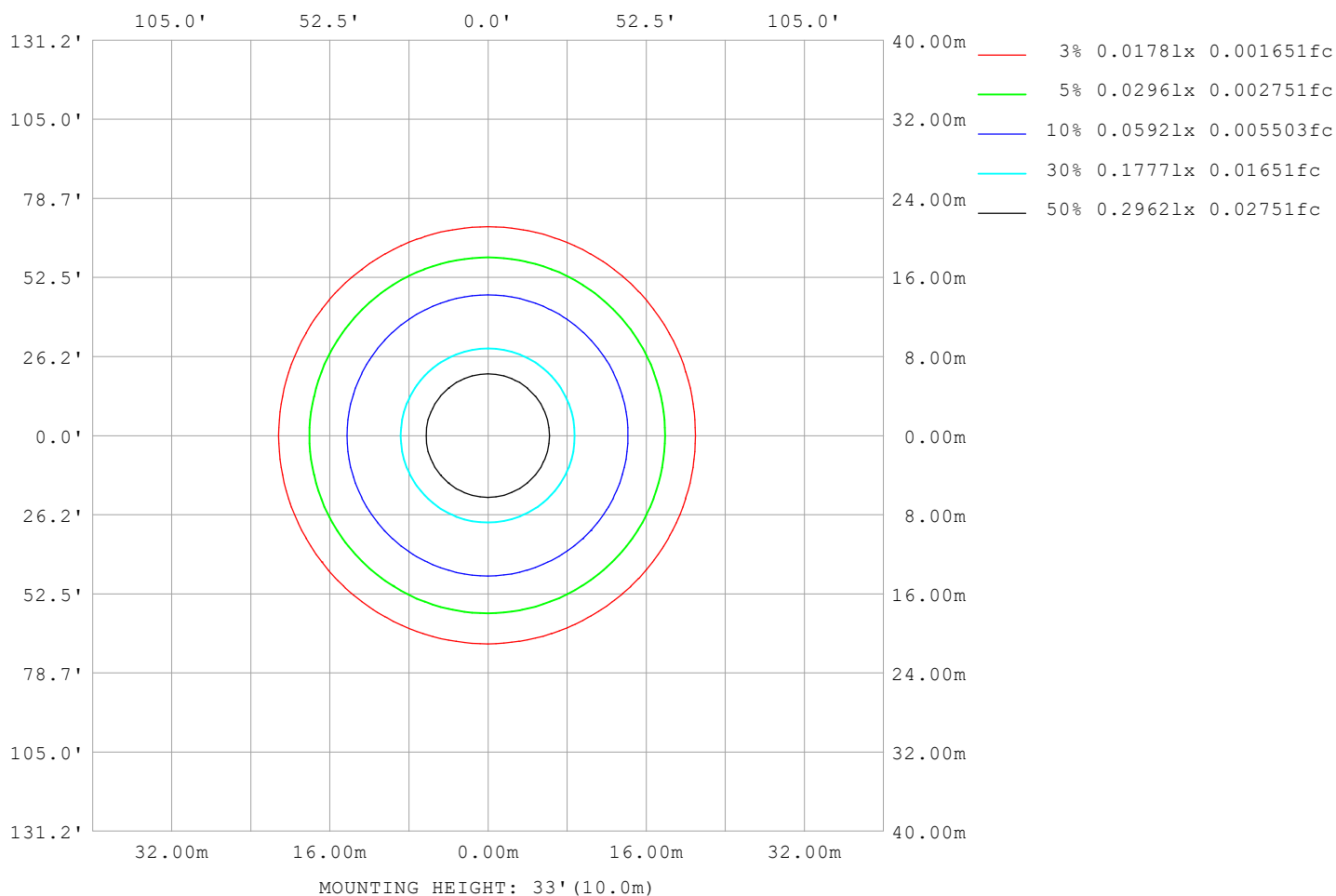
Note:The Curves indicate the illuminated area and the average illumination when the luminaire is at different distance.

C Range: 0 - 360DEG
C Interval: 30.0DEG
Test Speed: HIGH
Temperature:25.3℃
Operators:
Test Date:2025-03-17

γ Range: 0 - 180DEG
γ Interval: 1.0DEG
Test System:EVERFINE GO-2000B_V1 SYSTEM V2.00.488
Humidity:65.0%
Test Distance:6.360m [K=1.0000]
Remarks:

ISOLUX DIAGRAM

Test:U:24.00V I:0.4605A P:11.05W PF:1.000 Freq:0Hz Lamp Flux:182.20lx 1m		
NAME: SF16-24V-5050-70-SPI-RGBW(3000K)-W	TYPE:	WEIGHT:
SPEC.:	DIM.: Length=1m	SERIAL No.:
MFR.: OLympia lighting	SUR.:	Shielding Angle:



C Range: 0 - 360DEG
C Interval: 30.0DEG
Test Speed: HIGH
Temperature: 25.3°C
Operators:
Test Date: 2025-03-17

γ Range: 0 - 180DEG
γ Interval: 1.0DEG
Test System: EVERFINE GO-2000B_V1 SYSTEM V2.00.488
Humidity: 65.0%
Test Distance: 6.360m [K=1.0000]
Remarks:

LED Avg.L Report

Test:U:24.00V I:0.4605A P:11.05W PF:1.000 Freq:0Hz Lamp Flux:182.201x1 lm		
NAME: SF16-24V-5050-70-SPI-RGBW(3000K)-W	TYPE:	WEIGHT:
SPEC.:	DIM.: Length=1m	SERIAL No.:
MFR.: OLympia lighting	SUR.:	Shielding Angle:

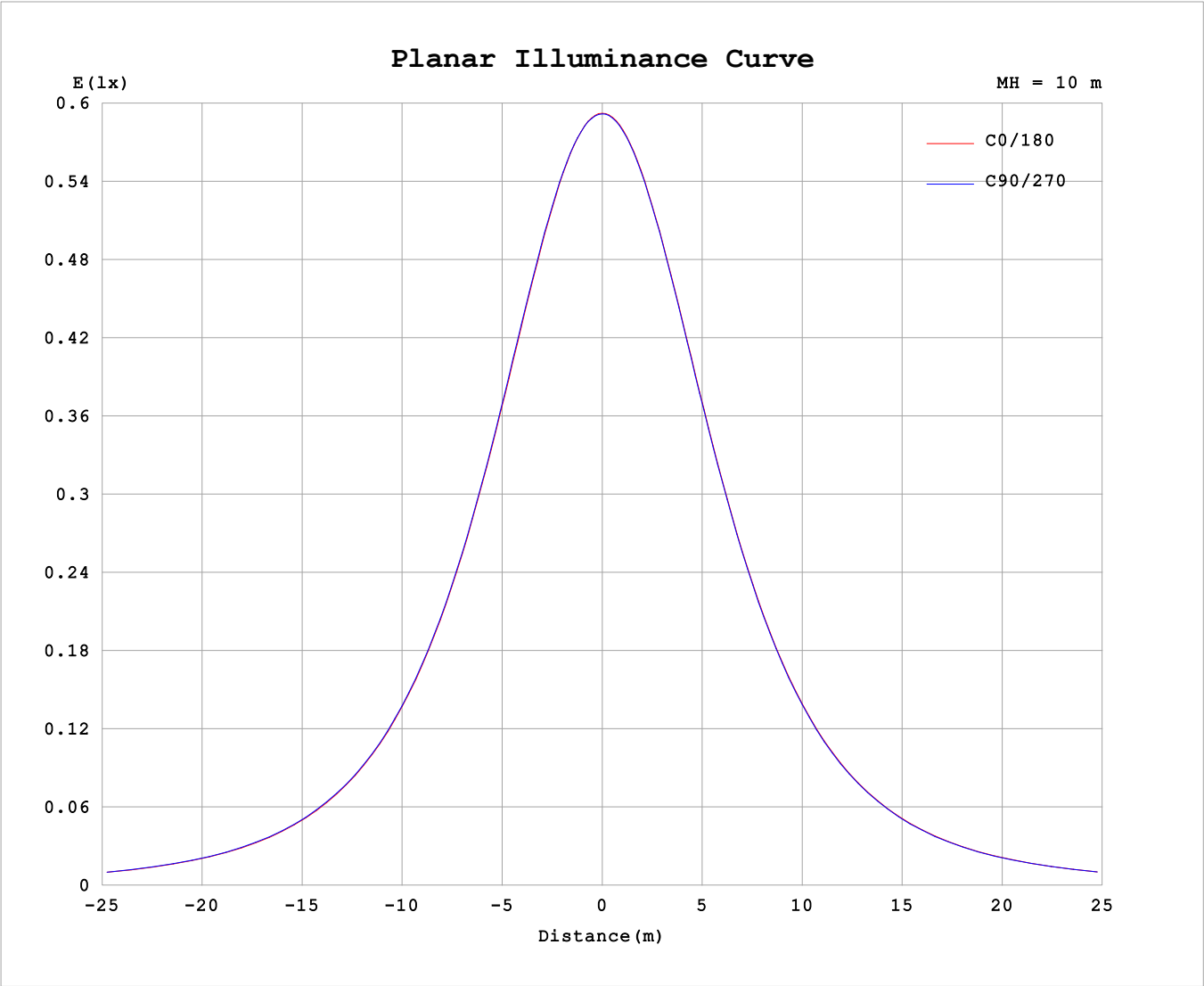
AvgL	cd/m2
L_0~180 (65) av	3178
L_0~180 (75) av	3148
L_0~180 (85) av	3730
L_90~270 (65) av	3189
L_90~270 (75) av	3173
L_90~270 (85) av	3453
L_45 (65) av	3185
L_45 (75) av	3158
L_45 (85) av	3525

Standard: GB/T 29293-2012

C Range: 0 - 360DEG
C Interval: 30.0DEG
Test Speed: HIGH
Temperature:25.3℃
Operators:
Test Date:2025-03-17

γ Range: 0 - 180DEG
γ Interval: 1.0DEG
Test System:EVERFINE GO-2000B_V1 SYSTEM V2.00.488
Humidity:65.0%
Test Distance:6.360m [K=1.0000]
Remarks:

Planar Illuminance Curve



C Range: 0 - 360DEG	γ Range: 0 - 180DEG
C Interval: 30.0DEG	γ Interval: 1.0DEG
Test Speed: HIGH	Test System:EVERFINE GO-2000B_V1 SYSTEM V2.00.488
Temperature:25.3℃	Humidity:65.0%
Operators:	Test Distance:6.360m [K=1.0000]
Test Date:2025-03-17	Remarks:

LUMINOUS DISTRIBUTION INTENSITY DATA

Test:U:24.00V I:0.4605A P:11.05W PF:1.000 Freq:0Hz Lamp Flux:182.201x1 lm											
NAME: SF16-24V-5050-70-SPI-RGBW(3000K)-W						TYPE:			WEIGHT:		
SPEC.:						DIM.: Length=1m			SERIAL No.:		
MFR.: OLYMPIA lighting						SUR.:			Shielding Angle:		

Table--1

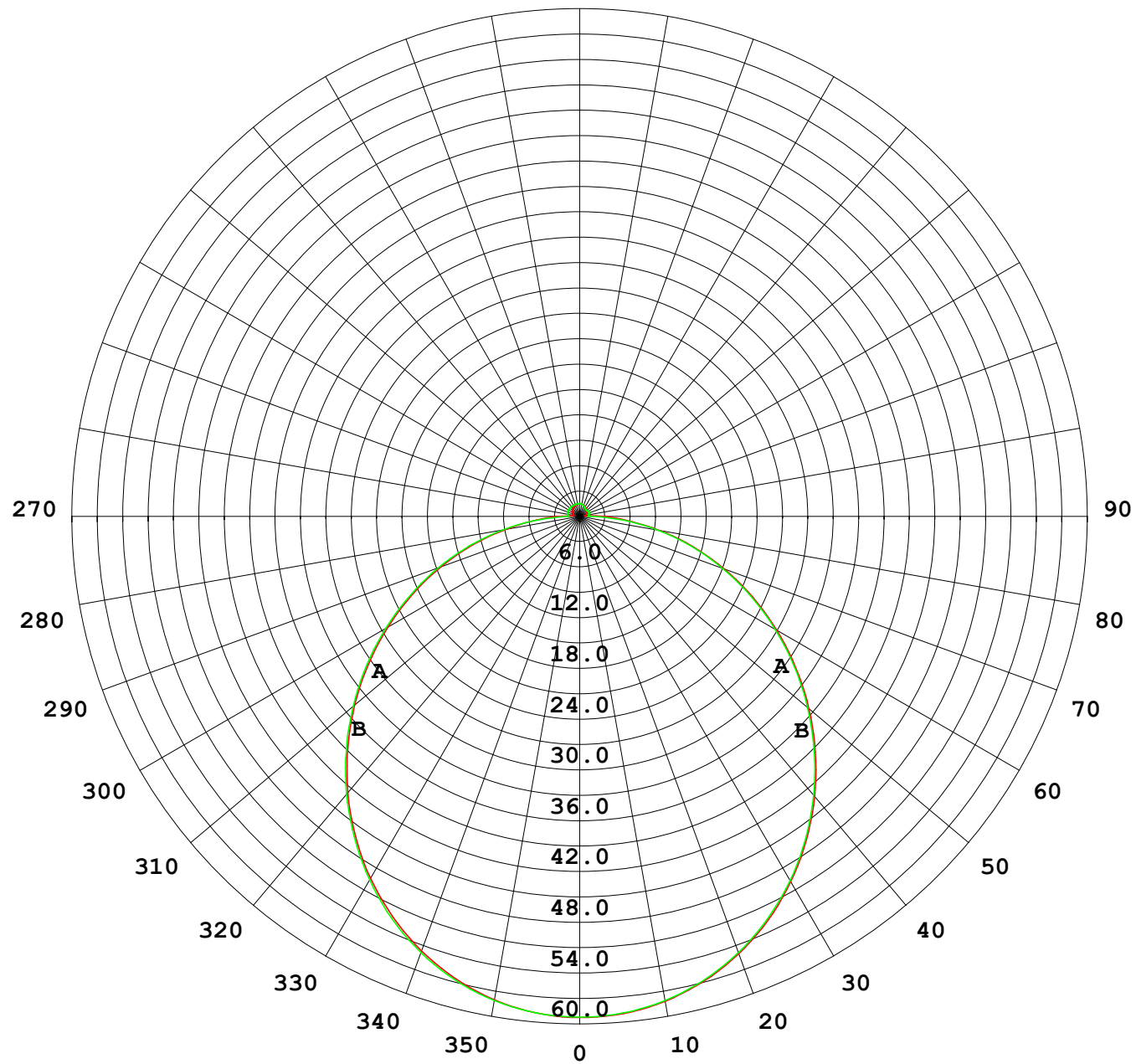
UNIT: cd

C (DEG) γ (DEG)	0	30	60	90	120	150	180	210	240	270	300	330							
0	59.2	59.2	59.2	59.2	59.2	59.2	59.2	59.2	59.2	59.2	59.2	59.2							
5	58.9	58.9	58.9	58.9	59.0	58.9	59.0	58.9	58.9	58.9	58.9	58.9							
10	58.0	58.1	58.1	58.1	58.1	58.1	58.2	58.1	58.1	58.1	58.1	58.1							
15	56.6	56.7	56.7	56.8	56.8	56.8	56.8	56.8	56.8	56.8	56.8	56.7							
20	54.6	54.8	54.8	54.9	54.9	55.0	55.0	54.9	55.0	54.9	54.9	54.8							
25	52.2	52.4	52.4	52.5	52.5	52.6	52.6	52.6	52.6	52.5	52.6	52.4							
30	49.4	49.5	49.6	49.7	49.8	49.8	49.8	49.8	49.8	49.8	49.7	49.6							
35	46.2	46.3	46.3	46.4	46.5	46.6	46.7	46.7	46.6	46.6	46.6	46.4							
40	42.6	42.7	42.7	42.9	43.0	43.1	43.2	43.1	43.1	43.0	43.0	42.9							
45	38.7	38.9	38.9	39.0	39.1	39.3	39.4	39.3	39.3	39.2	39.2	39.1							
50	34.7	34.8	34.8	35.0	35.1	35.3	35.4	35.3	35.3	35.2	35.2	35.0							
55	30.5	30.6	30.6	30.8	30.9	31.1	31.2	31.1	31.1	31.0	31.0	30.8							
60	26.2	26.3	26.3	26.5	26.6	26.8	26.9	26.8	26.7	26.7	26.7	26.5							
65	21.8	21.9	21.9	22.1	22.2	22.4	22.5	22.4	22.4	22.4	22.3	22.1							
70	17.4	17.5	17.6	17.8	17.8	18.0	18.2	18.0	18.0	18.0	17.9	17.7							
75	13.1	13.2	13.2	13.4	13.5	13.7	13.8	13.7	13.7	13.7	13.6	13.4							
80	8.78	8.88	8.93	9.15	9.20	9.39	9.53	9.38	9.34	9.35	9.25	9.08							
85	5.16	5.06	4.72	4.86	4.97	5.35	5.56	5.31	5.09	5.07	4.98	5.15							
90	2.49	2.42	1.87	1.37	1.97	2.62	2.82	2.47	1.87	1.17	1.84	2.36							
95	0.89	1.01	1.26	1.42	1.22	0.98	0.94	0.79	0.89	1.06	0.87	0.78							
100	0.82	1.03	1.28	1.48	1.27	1.01	0.72	0.73	0.92	1.11	0.92	0.74							
105	0.85	1.06	1.34	1.52	1.33	1.07	0.77	0.77	0.98	1.15	0.95	0.77							
110	0.91	1.11	1.37	1.55	1.37	1.12	0.83	0.83	1.00	1.18	0.98	0.83							
115	0.97	1.16	1.39	1.55	1.39	1.17	0.89	0.89	1.03	1.20	0.98	0.87							
120	1.02	1.20	1.41	1.54	1.41	1.21	0.93	0.94	1.05	1.18	0.98	0.93							
125	1.08	1.24	1.41	1.53	1.42	1.25	1.00	0.99	1.07	1.15	1.00	0.98							
130	1.14	1.28	1.42	1.52	1.43	1.29	1.06	1.05	1.10	1.13	1.03	1.04							
135	1.19	1.31	1.43	1.52	1.44	1.32	1.12	1.10	1.13	1.11	1.05	1.01							
140	1.23	1.34	1.46	1.52	1.46	1.35	1.17	1.16	1.17	1.11	1.09	1.06							
145	1.27	1.36	1.46	1.52	1.47	1.37	1.22	1.22	1.22	1.14	1.15	1.12							
150	1.32	1.39	1.48	1.52	1.48	1.40	1.28	1.27	1.28	1.22	1.20	1.16							
155	1.36	1.41	1.48	1.52	1.48	1.42	1.33	1.33	1.34	1.27	1.31	1.23							
160	1.41	1.45	1.48	1.52	1.48	1.46	1.39	1.37	1.40	1.35	1.39	1.28							
165	1.45	1.47	1.48	1.51	1.48	1.49	1.43	1.42	1.46	1.42	1.44	1.33							
170	1.48	1.50	1.49	1.52	1.49	1.51	1.48	1.47	1.50	1.48	1.49	1.46							
175	1.50	1.52	1.51	1.53	1.52	1.52	1.51	1.50	1.52	1.51	1.52	1.49							
180	1.51	1.52	1.52	1.53	1.52	1.52	1.51	1.52	1.52	1.53	1.53	1.51							

C Range: 0 - 360DEG
C Interval: 30.0DEG
Test Speed: HIGH
Temperature:25.3℃
Operators:
Test Date:2025-03-17

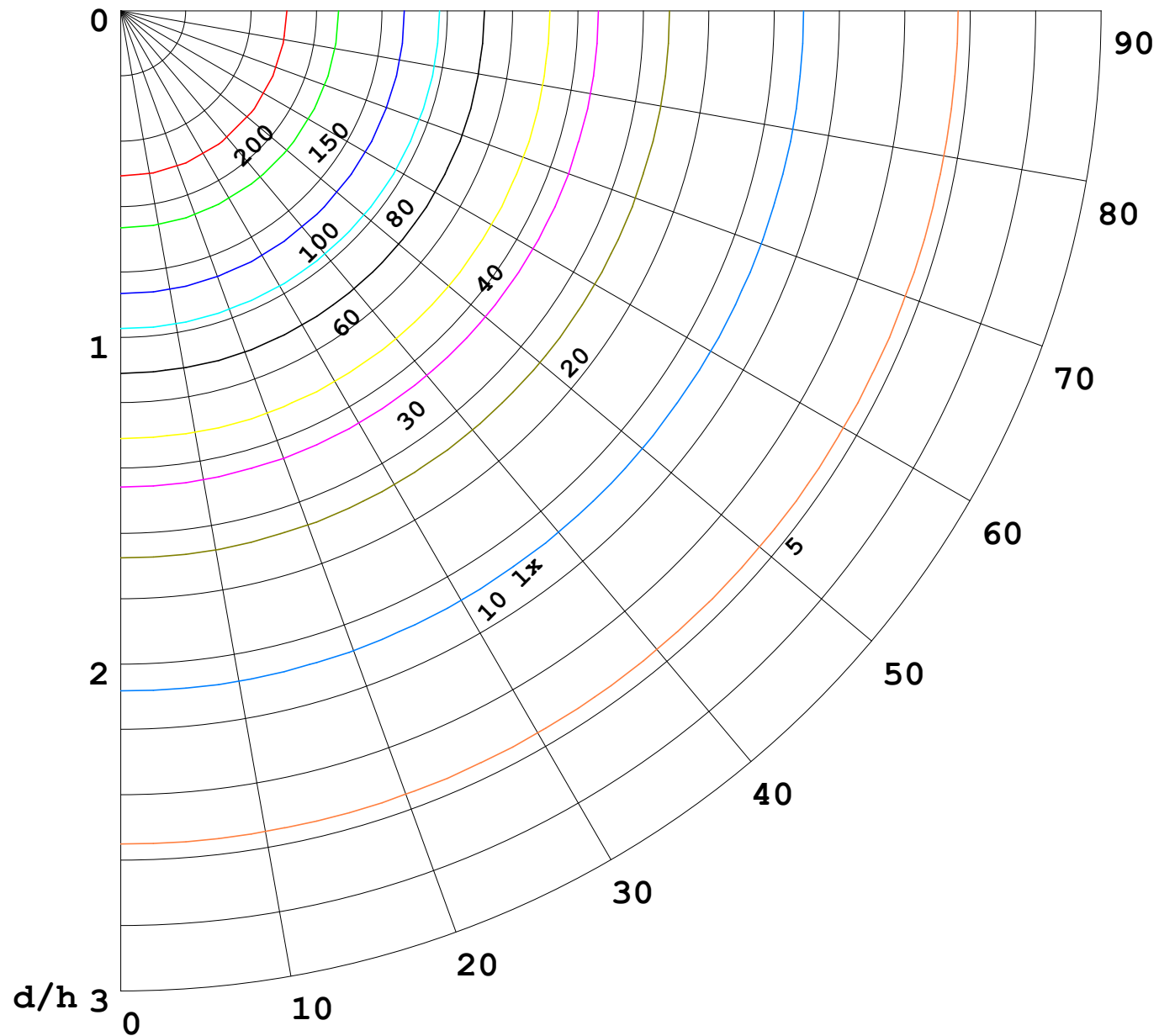
γ Range: 0 - 180DEG
γ Interval: 1.0DEG
Test System:EVERFINE GO-2000B_V1 SYSTEM V2.00.488
Humidity:65.0%
Test Distance:6.360m [K=1.0000]
Remarks:

I (cd)



1000 lm

$\kappa = 1$



F = 1000 lm
 K = 0.7
 Hcc = 0.8 m
 Hfc = 0.0 m
 Eave = 100 lx

	Pcc	Pw	Pfc
————	70	50	30
————	50	30	20

