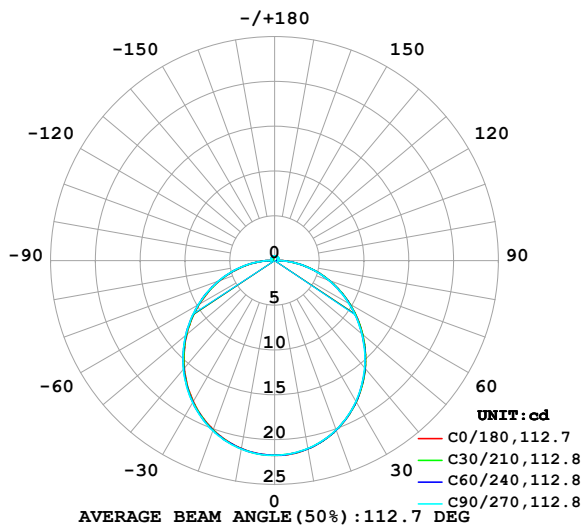


LUMINAIRE PHOTOMETRIC TEST REPORT

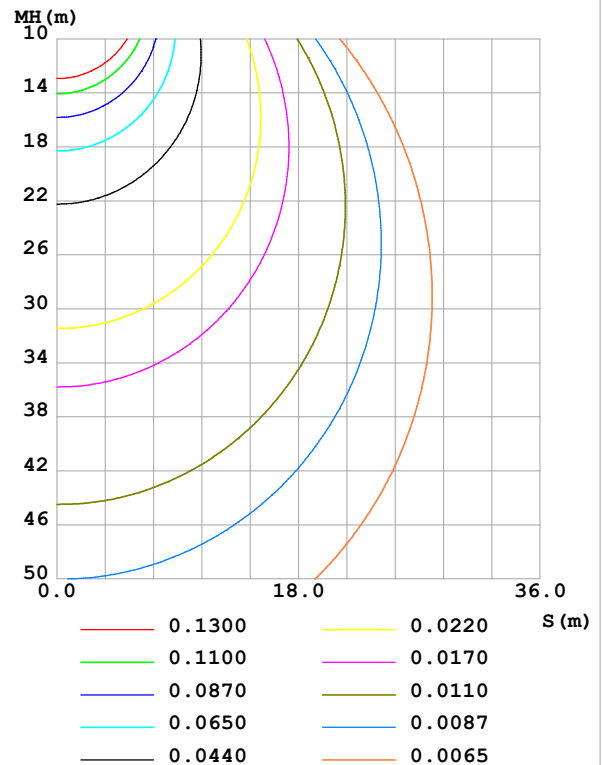
Test:U:24.00V I:0.4027A P:9.665W PF:1.000 Freq:0Hz Lamp Flux:66.66lx1 lm		
NAME: SF16-24V-5050-70-SPI-RGBW(4000K)-R	TYPE:	WEIGHT:
SPEC.:	DIM.: Length=1m	SERIAL No.:
MFR.: OLympia lighting	SUR.:	Shielding Angle:

DATA OF LAMP		PHOTOMETRIC DATA				Eff: 6.90 lm/W
MODEL	5050	I _{max} (cd)	21.74	S/MH(C0/180)	1.24	
NOMINAL POWER(W)		LOR(%)	100.0	S/MH(C90/270)	1.25	
RATED VOLTAGE(V)	24	TOTAL FLUX(lm)	66.661	η UP,DN(C0-180)	2.0,47.7	
NOMINAL FLUX(lm)	66.661	CIE CLASS	DIRECT	η UP,DN(C180-360)	2.1,48.3	
LAMPS INSIDE	1	η up (%)	4.0	CIBSE SHR NOM	1.25	
TEST VOLTAGE(V)		η down (%)	96.0	CIBSE SHR MAX	1.35	

LUMINOUS INTENSITY DISTRIBUTION DIAGRAM



C0 PLANE ISOLUX DIAGRAM (UNIT:lx)



C Range: 0 - 360DEG
C Interval: 30.0DEG
Test Speed: HIGH
Temperature:25.3℃
Operators:
Test Date:2025-03-11

γ Range: 0 - 180DEG
γ Interval: 1.0DEG
Test System:EVERFINE GO-2000B_V1 SYSTEM V2.00.488
Humidity:65.0%
Test Distance:6.360m [K=1.0000]
Remarks:

ZONAL FLUX DIAGRAM

ZONAL FLUX DIAGRAM:

γ	C0	C45	C90	C135	C180	C225	C270	C315	γ	Φ zone	Φ total	%lum, lamp
10	21.35	21.35	21.31	21.31	21.31	21.35	21.38	21.39	0- 10	2.057	2.057	3.09,3.09
20	20.14	20.14	20.10	20.09	20.09	20.16	20.21	20.22	10- 20	5.880	7.937	11.9,11.9
30	18.24	18.21	18.17	18.16	18.19	18.26	18.32	18.35	20- 30	8.880	16.82	25.2,25.2
40	15.74	15.71	15.64	15.64	15.70	15.78	15.85	15.88	30- 40	10.67	27.49	41.2,41.2
50	12.85	12.79	12.71	12.72	12.80	12.90	12.97	13.00	40- 50	11.06	38.55	57.8,57.8
60	9.720	9.672	9.600	9.597	9.698	9.785	9.842	9.882	50- 60	10.11	48.65	73,73
70	6.519	6.473	6.424	6.399	6.501	6.582	6.637	6.675	60- 70	8.047	56.70	85.1,85.1
80	3.357	3.319	3.274	3.247	3.350	3.415	3.447	3.490	70- 80	5.213	61.91	92.9,92.9
90	0.8466	0.6669	0.3724	0.6557	0.8288	0.7373	0.4607	0.7694	80- 90	2.057	63.97	96,96
100	0.2999	0.3420	0.3840	0.3407	0.2711	0.3838	0.4446	0.3797	90-100	0.4486	64.42	96.6,96.6
110	0.3171	0.3723	0.3869	0.3740	0.3086	0.4098	0.4821	0.4057	100-110	0.3914	64.81	97.2,97.2
120	0.3575	0.3983	0.4129	0.4100	0.3432	0.4329	0.4937	0.4245	110-120	0.3955	65.21	97.8,97.8
130	0.3921	0.4329	0.4447	0.4389	0.3864	0.4531	0.5024	0.4418	120-130	0.3810	65.59	98.4,98.4
140	0.4267	0.4617	0.4851	0.4707	0.4210	0.4689	0.5024	0.4519	130-140	0.3483	65.94	98.9,98.9
150	0.4641	0.4935	0.5255	0.4981	0.4556	0.4848	0.5052	0.4692	140-150	0.2979	66.23	99.4,99.4
160	0.4988	0.5108	0.5428	0.5226	0.4903	0.5021	0.5110	0.4938	150-160	0.2298	66.46	99.7,99.7
170	0.5161	0.5324	0.5428	0.5371	0.5306	0.5252	0.5254	0.5270	160-170	0.1469	66.61	99.9,99.9
180	0.5334	0.5382	0.5428	0.5414	0.5334	0.5368	0.5428	0.5400	170-180	0.0509	66.66	100,100
DEG	LUMINOUS INTENSITY:cd									UNIT:lm		

Conical surface Flux(90deg): 33.055 lm

%lum = 49.6%

%lamp = 49.6%

Conical surface Flux(130deg): 52.992 lm

%lum = 79.5%

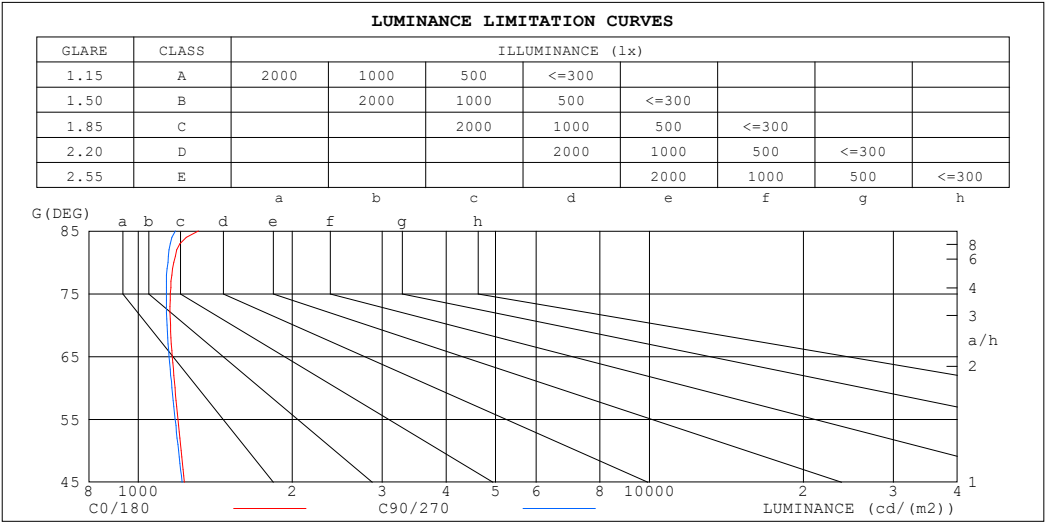
%lamp = 79.5%

C Range: 0 - 360DEG
 C Interval: 30.0DEG
 Test Speed: HIGH
 Temperature:25.3℃
 Operators:
 Test Date:2025-03-11

γ Range: 0 - 180DEG
 γ Interval: 1.0DEG
 Test System:EVERFINE GO-2000B_V1 SYSTEM V2.00.488
 Humidity:65.0%
 Test Distance:6.360m [K=1.0000]
 Remarks:

LUMINANCE LIMITATION CURVES

Test:U:24.00V I:0.4027A P:9.665W PF:1.000 Freq:0Hz Lamp Flux:66.661x1 lm		
NAME: SF16-24V-5050-70-SPI-RGBW(4000K)-R	TYPE:	WEIGHT:
SPEC.:	DIM.: Length=1m	SERIAL No.:
MFR.: OLYMPIA lighting	SUR.:	Shielding Angle:



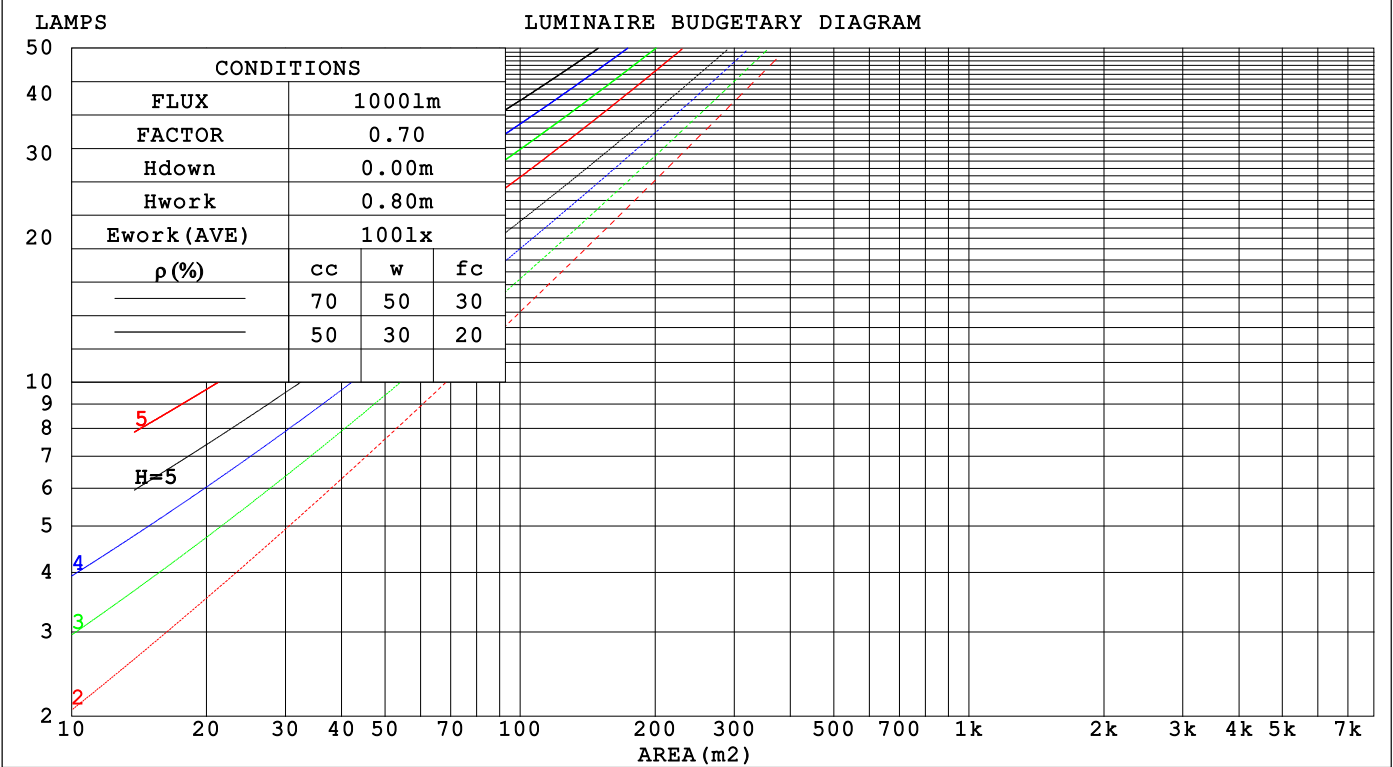
LUMINANCE cd/(m2)		
G (DEG)	C0/180	C90/270
85	1311	1182
80	1173	1142
75	1155	1135
70	1156	1138
65	1165	1149
60	1179	1163
55	1195	1181
50	1212	1198
45	1230	1218

C Range: 0 - 360DEG	γ Range: 0 - 180DEG
C Interval: 30.0DEG	γ Interval: 1.0DEG
Test Speed: HIGH	Test System:EVERFINE GO-2000B_V1 SYSTEM V2.00.488
Temperature:25.3℃	Humidity:65.0%
Operators:	Test Distance:6.360m [K=1.0000]
Test Date:2025-03-11	Remarks:

CU AND LUMINAIRE BUDGETARY ESTIMATE DIAGRAM

Test:U:24.00V I:0.4027A P:9.665W PF:1.000 Freq:0Hz		
Lamp Flux:66.66lx1 lm		
NAME: SF16-24V-5050-70-SPI-RGBW(4000K)-R	TYPE:	WEIGHT:
SPEC.:	DIM.: Length=1m	SERIAL No.:
MFR.: OLYMPIA lighting	SUR.:	Shielding Angle:

pcc	80%			70%			50%			30%			10%			0
pw	50%	30%	10%	50%	30%	10%	50%	30%	10%	50%	30%	10%	50%	30%	10%	0
pfc	20%			20%			20%			20%			20%			0
RCR	RCR:Room Cavity Ratio			Coefficients of Utilization(CU)												
0.0	1.18	1.18	1.18	1.15	1.15	1.15	1.09	1.09	1.09	1.03	1.03	1.03	.98	.98	.98	.96
1.0	1.02	.97	.93	.99	.95	.91	.94	.91	.88	.90	.87	.84	.85	.83	.81	.79
2.0	.88	.81	.75	.86	.80	.74	.82	.77	.72	.78	.74	.70	.74	.71	.67	.65
3.0	.77	.69	.62	.76	.68	.62	.72	.65	.60	.69	.63	.58	.66	.61	.57	.54
4.0	.68	.59	.53	.67	.59	.52	.64	.57	.51	.61	.55	.50	.58	.53	.49	.46
5.0	.61	.52	.45	.60	.51	.45	.57	.50	.44	.55	.48	.43	.52	.47	.42	.40
6.0	.55	.46	.39	.54	.45	.39	.52	.44	.38	.49	.43	.38	.48	.42	.37	.35
7.0	.50	.41	.35	.49	.40	.34	.47	.39	.34	.45	.38	.33	.43	.37	.33	.31
8.0	.45	.37	.31	.45	.36	.31	.43	.35	.30	.41	.35	.30	.40	.34	.29	.27
9.0	.42	.33	.28	.41	.33	.28	.39	.32	.27	.38	.32	.27	.37	.31	.27	.25
10.0	.38	.30	.25	.38	.30	.25	.36	.29	.25	.35	.29	.24	.34	.28	.24	.22



C Range: 0 - 360DEG
C Interval: 30.0DEG
Test Speed: HIGH
Temperature:25.3℃
Operators:
Test Date:2025-03-11

γ Range: 0 - 180DEG
γ Interval: 1.0DEG
Test System:EVERFINE GO-2000B_V1 SYSTEM V2.00.488
Humidity:65.0%
Test Distance:6.360m [K=1.0000]
Remarks:

WEC AND CCEC

Test:U:24.00V I:0.4027A P:9.665W PF:1.000 Freq:0Hz Lamp Flux:66.66lx1 lm		
NAME: SF16-24V-5050-70-SPI-RGBW(4000K)-R	TYPE:	WEIGHT:
SPEC.:	DIM.: Length=1m	SERIAL No.:
MFR.: OLYMPIA lighting	SUR.:	Shielding Angle:

pcc	80%			70%			50%			30%			10%			0														
pw	50%	30%	10%	50%	30%	10%	50%	30%	10%	50%	30%	10%	50%	30%	10%	0														
pfc	20%			20%			20%			20%			20%			0														
RCR	RCR:Room Cavity Ratio															Wall Exitance Coefficients(WEC)														
0.0																														
1.0	.327	.186	.059	.319	.182	.058	.303	.174	.056	.289	.166	.053	.275	.160	.051															
2.0	.301	.165	.051	.294	.162	.050	.280	.156	.048	.267	.150	.047	.255	.144	.046															
3.0	.276	.147	.044	.269	.144	.043	.257	.139	.042	.245	.135	.041	.235	.130	.040															
4.0	.253	.131	.039	.247	.129	.038	.236	.125	.037	.226	.121	.037	.216	.117	.036															
5.0	.233	.119	.034	.228	.117	.034	.218	.113	.033	.209	.110	.033	.200	.107	.032															
6.0	.215	.108	.031	.211	.106	.031	.202	.103	.030	.193	.101	.030	.186	.098	.029															
7.0	.200	.099	.028	.196	.098	.028	.188	.095	.027	.180	.092	.027	.173	.090	.026															
8.0	.186	.091	.026	.183	.090	.025	.175	.088	.025	.169	.085	.025	.162	.083	.024															
9.0	.175	.084	.024	.171	.083	.023	.165	.081	.023	.158	.079	.023	.152	.077	.022															
10.0	.164	.079	.022	.161	.078	.022	.155	.076	.021	.149	.074	.021	.144	.072	.021															

pcc	80%			70%			50%			30%			10%			0
pw	50%	30%	10%	50%	30%	10%	50%	30%	10%	50%	30%	10%	50%	30%	10%	0
pfc	20%			20%			20%			20%			20%			0
RCR	RCR:Room Cavity Ratio						Ceiling Cavity Exitance Coefficients(CCEC)									
0.0	.221	.221	.221	.189	.189	.189	.129	.129	.129	.074	.074	.074	.024	.024	.024	
1.0	.212	.187	.164	.182	.160	.141	.124	.110	.098	.072	.064	.057	.023	.021	.018	
2.0	.205	.163	.128	.175	.140	.111	.120	.097	.077	.069	.056	.045	.022	.018	.015	
3.0	.197	.146	.105	.169	.126	.091	.116	.087	.064	.067	.051	.038	.022	.017	.012	
4.0	.189	.133	.089	.162	.115	.078	.112	.080	.055	.065	.047	.032	.021	.015	.011	
5.0	.182	.122	.078	.156	.106	.068	.108	.074	.048	.062	.043	.029	.020	.014	.009	
6.0	.175	.114	.071	.150	.099	.061	.104	.069	.044	.060	.041	.026	.019	.013	.009	
7.0	.168	.107	.065	.144	.093	.057	.100	.065	.040	.058	.038	.024	.019	.013	.008	
8.0	.161	.101	.060	.139	.088	.053	.096	.062	.037	.056	.036	.022	.018	.012	.007	
9.0	.155	.097	.057	.134	.084	.050	.093	.059	.035	.054	.035	.021	.017	.011	.007	
10.0	.149	.092	.054	.129	.080	.047	.089	.056	.034	.052	.033	.020	.017	.011	.007	

C Range: 0 - 360DEG
C Interval: 30.0DEG
Test Speed: HIGH
Temperature:25.3℃
Operators:
Test Date:2025-03-11

γ Range: 0 - 180DEG
γ Interval: 1.0DEG
Test System:EVERFINE GO-2000B_V1 SYSTEM V2.00.488
Humidity:65.0%
Test Distance:6.360m [K=1.0000]
Remarks:

UGR(Unified Glare Rating) Table

Test:U:24.00V I:0.4027A P:9.665W PF:1.000 Freq:0Hz Lamp Flux:66.66lx1 lm											
NAME: SF16-24V-5050-70-SPI-RGBW(4000K)-R						TYPE:		WEIGHT:			
SPEC.:						DIM.: Length=1m		SERIAL No.:			
MFR.: OLympia lighting						SUR.:		Shielding Angle:			
ceiling/cavity	0.7	0.7	0.5	0.5	0.3	0.7	0.7	0.5	0.5	0.3	
walls	0.5	0.3	0.5	0.3	0.3	0.5	0.3	0.5	0.3	0.3	
working plane	0.2	0.2	0.2	0.2	0.2	0.2	0.2	0.2	0.2	0.2	
Room dimensions		Viewed crosswise					Viewed endwise				
x = 2H y = 2H	22.5	24.0	22.9	24.3	24.6	22.5	24.0	22.8	24.2	24.5	
	3H	24.2	25.6	24.6	25.9	26.2	24.1	25.5	24.5	25.8	26.1
	4H	25.0	26.3	25.3	26.6	26.9	24.9	26.2	25.3	26.5	26.9
	6H	25.6	26.8	26.0	27.2	27.6	25.5	26.7	25.9	27.1	27.5
	8H	25.9	27.1	26.3	27.4	27.8	25.8	26.9	26.2	27.3	27.7
	12H	26.1	27.2	26.5	27.6	28.0	25.9	27.1	26.4	27.5	27.9
4H	2H	23.2	24.5	23.5	24.8	25.1	23.1	24.4	23.5	24.7	25.1
	3H	25.0	26.2	25.5	26.6	27.0	25.0	26.1	25.4	26.5	26.9
	4H	25.9	27.0	26.4	27.4	27.8	25.9	26.9	26.3	27.3	27.7
	6H	26.7	27.7	27.2	28.1	28.6	26.6	27.6	27.1	28.0	28.5
	8H	27.1	27.9	27.5	28.4	28.9	27.0	27.8	27.4	28.3	28.7
	12H	27.4	28.2	27.8	28.6	29.1	27.2	28.0	27.7	28.5	29.0
8H	4H	26.3	27.1	26.8	27.6	28.1	26.2	27.1	26.7	27.5	28.0
	6H	27.3	28.0	27.8	28.5	29.0	27.2	27.9	27.7	28.4	28.9
	8H	27.7	28.4	28.2	28.9	29.4	27.6	28.2	28.1	28.7	29.3
	12H	28.1	28.7	28.7	29.2	29.8	28.0	28.5	28.5	29.0	29.6
12H	4H	26.3	27.1	26.8	27.6	28.1	26.2	27.0	26.7	27.5	28.0
	6H	27.4	28.0	27.9	28.5	29.0	27.3	27.9	27.8	28.4	29.0
	8H	27.9	28.4	28.4	28.9	29.5	27.8	28.3	28.3	28.8	29.4
Variations with the observer position at spacings(CIE Pub.117):											
S = 1.0H	+ 0.1 / - 0.2					+ 0.1 / - 0.2					
1.5H	+ 0.2 / - 0.3					+ 0.2 / - 0.3					
2.0H	+ 0.1 / - 0.3					+ 0.1 / - 0.3					

CIE Pub.117, 66.66 lm Total Lamp Luminous Flux Correct (8log(F/F0) = -9.4)
Area: 0.0165 m2

C Range: 0 - 360DEG
C Interval: 30.0DEG
Test Speed: HIGH
Temperature:25.3℃
Operators:
Test Date:2025-03-11

γ Range: 0 - 180DEG
γ Interval: 1.0DEG
Test System:EVERFINE GO-2000B_V1 SYSTEM V2.00.488
Humidity:65.0%
Test Distance:6.360m [K=1.0000]
Remarks:

UTILIZATION FACTORS TABLE

Test:U:24.00V I:0.4027A P:9.665W PF:1.000 Freq:0Hz Lamp Flux:66.66lx1 lm		
NAME: SF16-24V-5050-70-SPI-RGBW(4000K)-R	TYPE:	WEIGHT:
SPEC.:	DIM.: Length=1m	SERIAL No.:
MFR.: OLympia lighting	SUR.:	Shielding Angle:

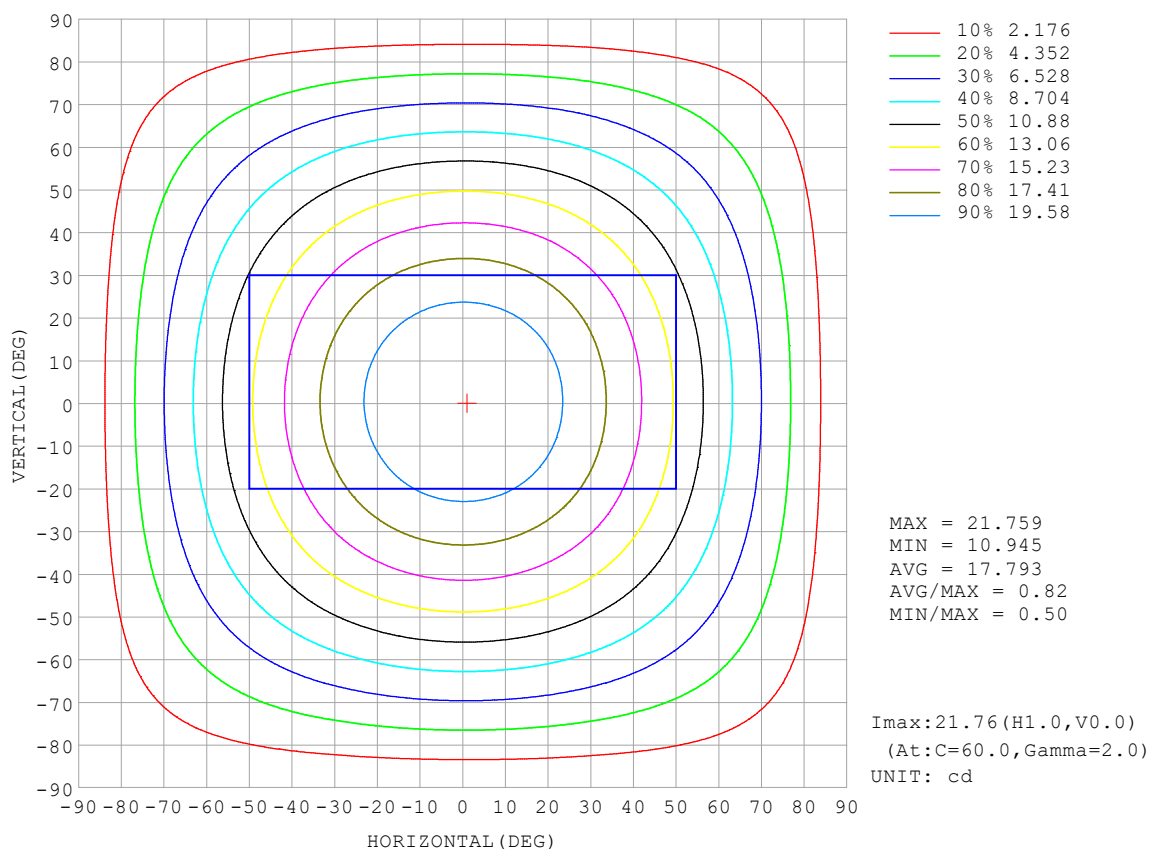
REFLECTANCE										
Ceiling	0.8	0.8	0.8	0.7	0.7	0.7	0.5	0.5	0.5	0
Walls	0.7	0.5	0.3	0.7	0.5	0.3	0.7	0.5	0.3	0
Working plane	0.2	0.2	0.2	0.2	0.2	0.2	0.2	0.2	0.2	0
ROOM INDEX	UTILIZATION FACTORS (PERCENT) $k(RI) \times RCR = 5$									
$k = 0.60$	56	44	37	55	44	37	53	43	36	30
0.80	65	53	46	64	53	46	62	52	45	38
1.00	74	62	55	72	61	54	70	63	53	46
1.25	81	70	62	79	69	62	76	67	61	53
1.50	86	75	68	84	74	67	80	72	66	58
2.00	93	84	77	90	82	76	86	79	74	65
2.50	97	88	82	94	87	81	90	84	79	69
3.00	100	93	87	98	91	85	93	87	83	73
4.00	104	98	93	101	96	91	97	92	88	78
5.00	107	102	97	104	99	95	99	95	92	81
ROOM INDEX	UF (total)									Direct
According to DIN EN 13032-2 2004			Suspended					SHRNOM = 1.25		

C Range: 0 - 360DEG
 C Interval: 30.0DEG
 Test Speed: HIGH
 Temperature: 25.3 °C
 Operators:
 Test Date: 2025-03-11

γ Range: 0 - 180DEG
 γ Interval: 1.0DEG
 Test System: EVERFINE GO-2000B_V1 SYSTEM V2.00.488
 Humidity: 65.0%
 Test Distance: 6.360m [K=1.0000]
 Remarks:

ISOCANDELA DIAGRAM

Test:U:24.00V I:0.4027A P:9.665W PF:1.000 Freq:0Hz Lamp Flux:66.66lx1 lm		
NAME: SF16-24V-5050-70-SPI-RGBW(4000K)-R	TYPE:	WEIGHT:
SPEC.:	DIM.: Length=1m	SERIAL No.:
MFR.: OLympia lighting	SUR.:	Shielding Angle:

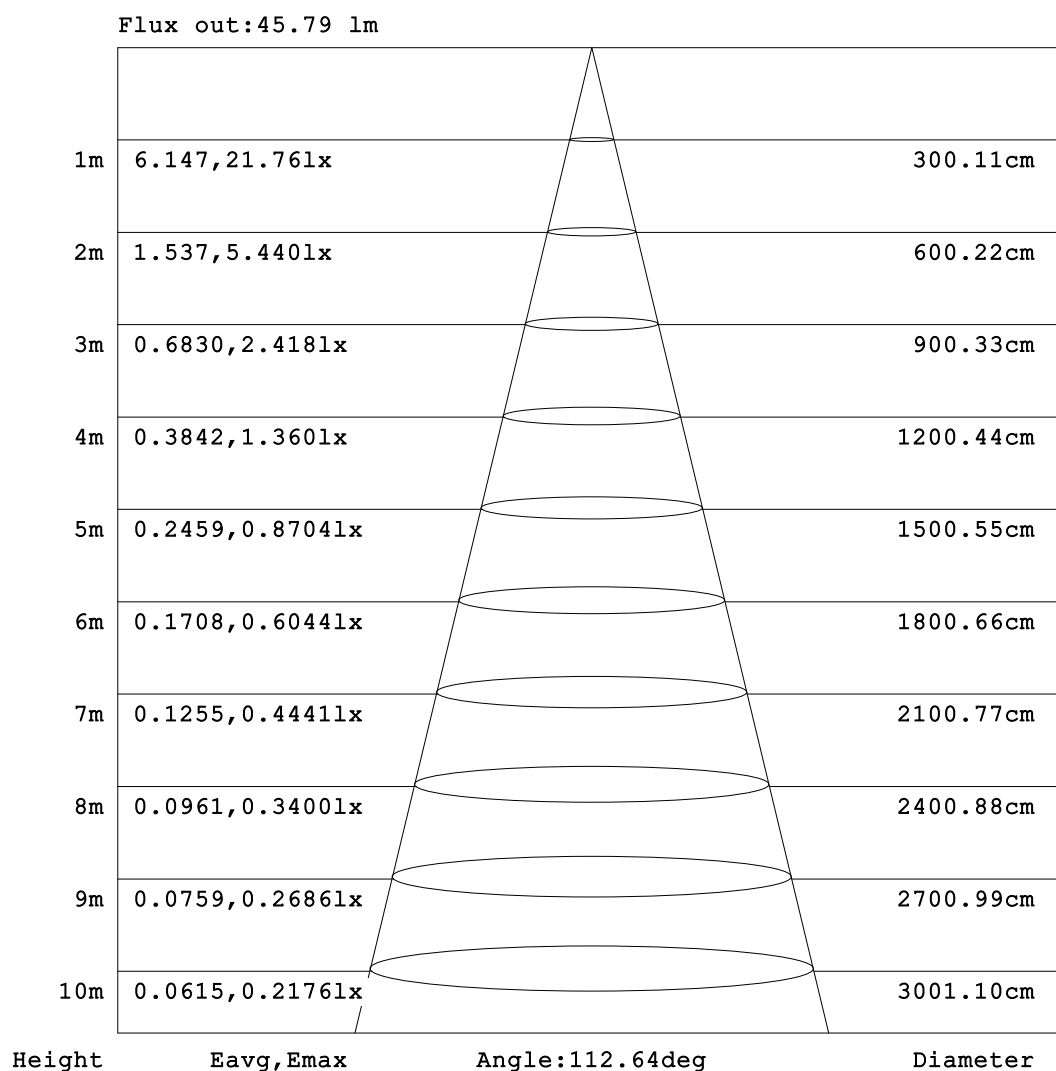


C Range: 0 - 360DEG
C Interval: 30.0DEG
Test Speed: HIGH
Temperature:25.3℃
Operators:
Test Date:2025-03-11

γ Range: 0 - 180DEG
γ Interval: 1.0DEG
Test System:EVERFINE GO-2000B_V1 SYSTEM V2.00.488
Humidity:65.0%
Test Distance:6.360m [K=1.0000]
Remarks:

AAI Figure

Test:U:24.00V I:0.4027A P:9.665W PF:1.000 Freq:0Hz Lamp Flux:66.66lx1 lm		
NAME: SF16-24V-5050-70-SPI-RGBW(4000K)-R	TYPE:	WEIGHT:
SPEC.:	DIM.: Length=1m	SERIAL No.:
MFR.: OLympia lighting	SUR.:	Shielding Angle:



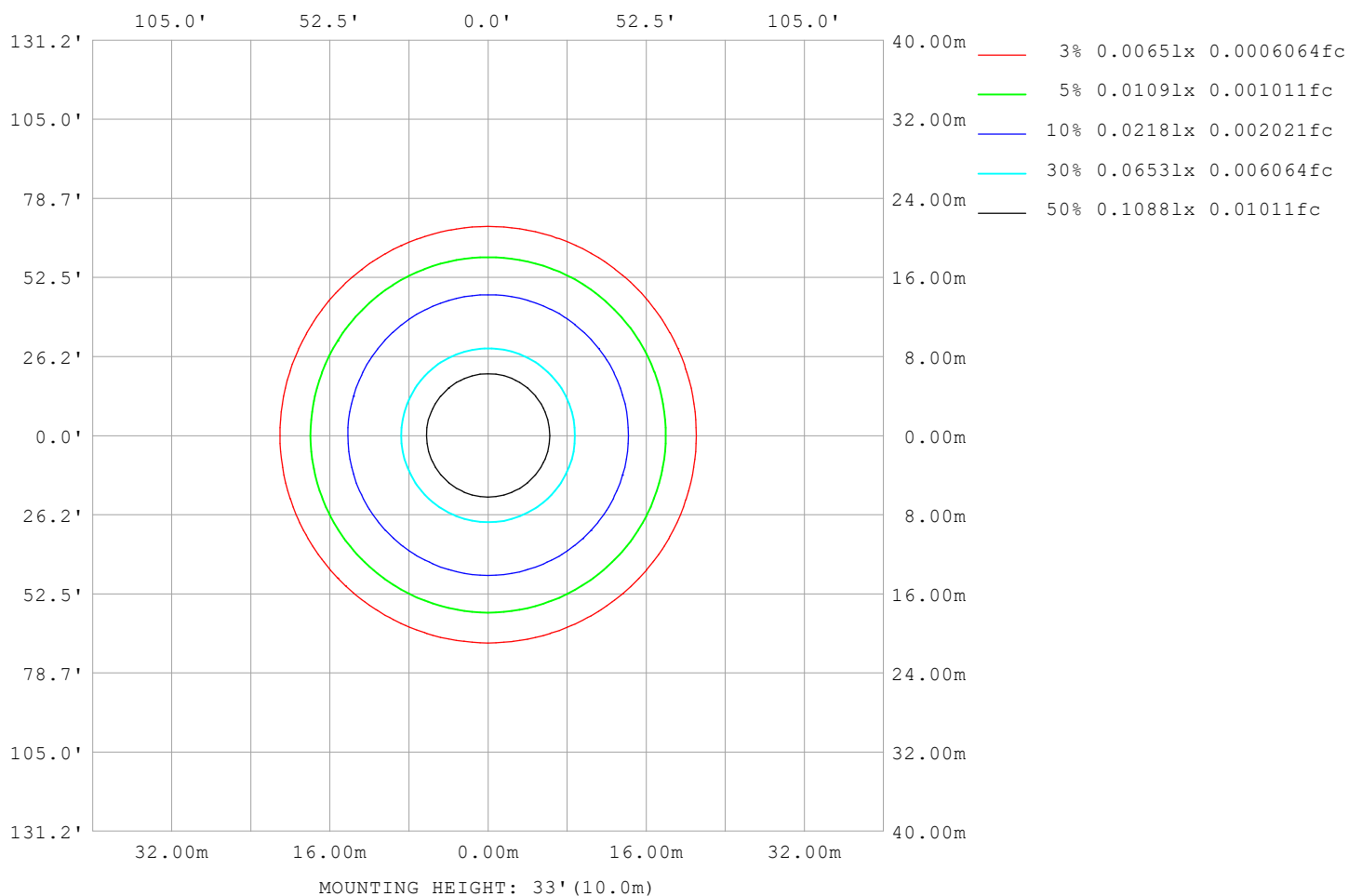
Note:The Curves indicate the illuminated area and the average illumination when the luminaire is at different distance.

C Range: 0 - 360DEG
C Interval: 30.0DEG
Test Speed: HIGH
Temperature:25.3℃
Operators:
Test Date:2025-03-11

γ Range: 0 - 180DEG
γ Interval: 1.0DEG
Test System:EVERFINE GO-2000B_V1 SYSTEM V2.00.488
Humidity:65.0%
Test Distance:6.360m [K=1.0000]
Remarks:

ISOLUX DIAGRAM

Test:U:24.00V I:0.4027A P:9.665W PF:1.000 Freq:0Hz Lamp Flux:66.66lx1 lm		
NAME: SF16-24V-5050-70-SPI-RGBW(4000K)-R	TYPE:	WEIGHT:
SPEC.:	DIM.: Length=1m	SERIAL No.:
MFR.: OLympia lighting	SUR.:	Shielding Angle:



C Range: 0 - 360DEG
C Interval: 30.0DEG
Test Speed: HIGH
Temperature: 25.3°C
Operators:
Test Date: 2025-03-11

γ Range: 0 - 180DEG
γ Interval: 1.0DEG
Test System: EVERFINE GO-2000B_V1 SYSTEM V2.00.488
Humidity: 65.0%
Test Distance: 6.360m [K=1.0000]
Remarks:

LED Avg.L Report

Test:U:24.00V I:0.4027A P:9.665W PF:1.000 Freq:0Hz Lamp Flux:66.66lx1 lm		
NAME: SF16-24V-5050-70-SPI-RGBW(4000K)-R	TYPE:	WEIGHT:
SPEC.:	DIM.: Length=1m	SERIAL No.:
MFR.: OLympia lighting	SUR.:	Shielding Angle:

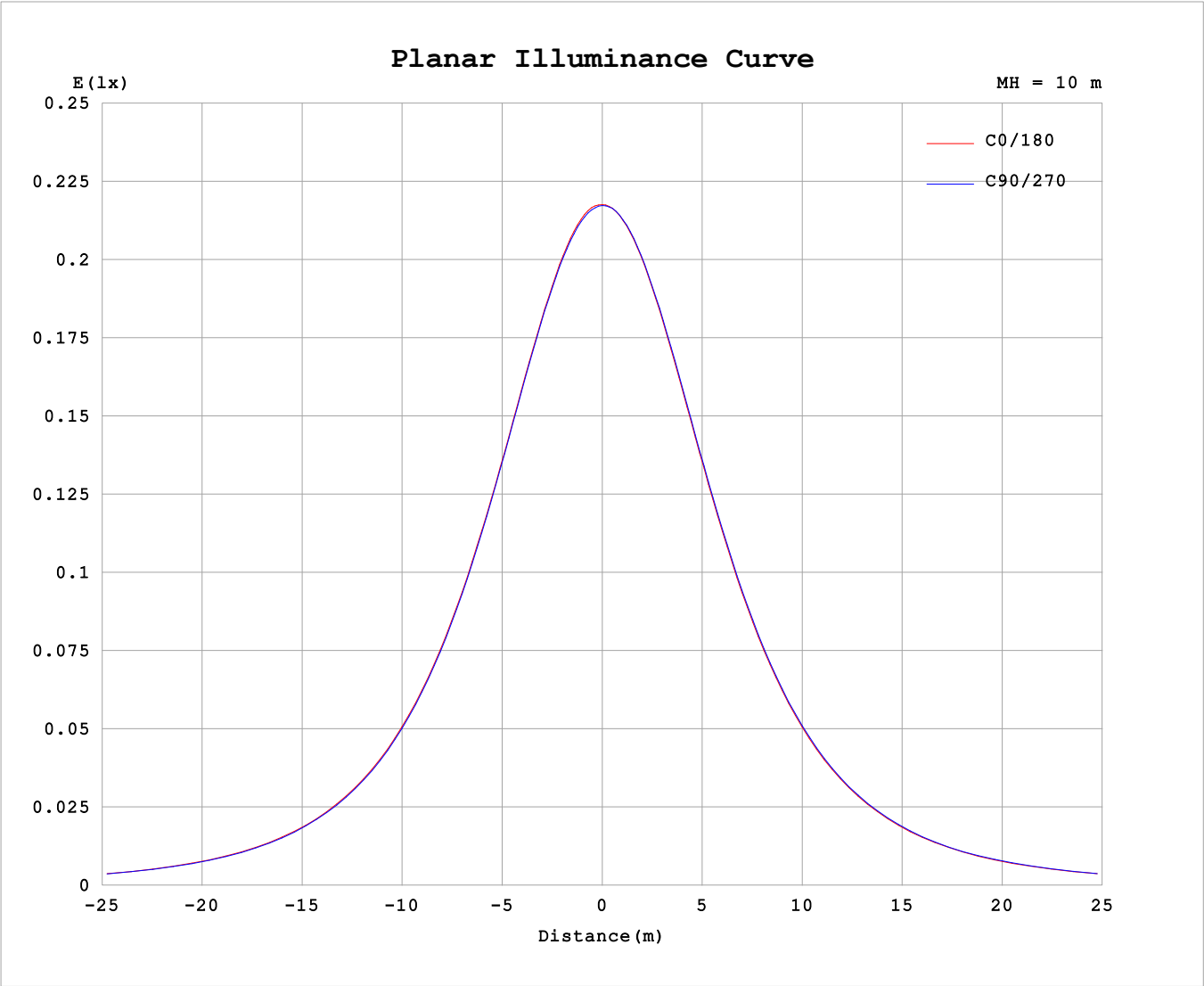
AvgL	cd/m2
L_0~180 (65) av	1163
L_0~180 (75) av	1153
L_0~180 (85) av	1295
L_90~270 (65) av	1166
L_90~270 (75) av	1157
L_90~270 (85) av	1240
L_45 (65) av	1167
L_45 (75) av	1158
L_45 (85) av	1267

Standard: GB/T 29293-2012

C Range: 0 - 360DEG
C Interval: 30.0DEG
Test Speed: HIGH
Temperature:25.3℃
Operators:
Test Date:2025-03-11

γ Range: 0 - 180DEG
γ Interval: 1.0DEG
Test System:EVERFINE GO-2000B_V1 SYSTEM V2.00.488
Humidity:65.0%
Test Distance:6.360m [K=1.0000]
Remarks:

Planar Illuminance Curve



C Range: 0 - 360DEG	γ Range: 0 - 180DEG
C Interval: 30.0DEG	γ Interval: 1.0DEG
Test Speed: HIGH	Test System:EVERFINE GO-2000B_V1 SYSTEM V2.00.488
Temperature:25.3℃	Humidity:65.0%
Operators:	Test Distance:6.360m [K=1.0000]
Test Date:2025-03-11	Remarks:

LUMINOUS DISTRIBUTION INTENSITY DATA

Test:U:24.00V I:0.4027A P:9.665W PF:1.000 Freq:0Hz Lamp Flux:66.66lx1 lm											
NAME: SF16-24V-5050-70-SPI-RGBW(4000K)-R						TYPE:			WEIGHT:		
SPEC.:						DIM.: Length=1m			SERIAL No.:		
MFR.: OLympia lighting						SUR.:			Shielding Angle:		

Table--1

UNIT: cd

C (DEG) γ (DEG)	0	30	60	90	120	150	180	210	240	270	300	330							
0	21.7	21.7	21.7	21.7	21.7	21.7	21.7	21.7	21.7	21.7	21.7	21.7							
5	21.7	21.6	21.7	21.6	21.6	21.6	21.6	21.7	21.6	21.7	21.7	21.7							
10	21.4	21.3	21.3	21.3	21.3	21.3	21.3	21.4	21.3	21.4	21.4	21.4							
15	20.8	20.8	20.8	20.8	20.8	20.8	20.8	20.8	20.9	20.9	20.9	20.9							
20	20.1	20.1	20.1	20.1	20.1	20.1	20.1	20.1	20.2	20.2	20.2	20.2							
25	19.3	19.3	19.2	19.2	19.2	19.2	19.2	19.3	19.3	19.3	19.4	19.4							
30	18.2	18.2	18.2	18.2	18.2	18.2	18.2	18.2	18.3	18.3	18.4	18.3							
35	17.1	17.1	17.0	17.0	17.0	17.0	17.0	17.1	17.1	17.2	17.2	17.2							
40	15.7	15.7	15.7	15.6	15.6	15.7	15.7	15.8	15.8	15.8	15.9	15.9							
45	14.3	14.3	14.2	14.2	14.2	14.2	14.3	14.3	14.4	14.4	14.5	14.5							
50	12.8	12.8	12.8	12.7	12.7	12.7	12.8	12.9	12.9	13.0	13.0	13.0							
55	11.3	11.3	11.2	11.2	11.2	11.2	11.3	11.3	11.4	11.4	11.5	11.4							
60	9.72	9.71	9.63	9.60	9.57	9.62	9.70	9.75	9.83	9.84	9.91	9.85							
65	8.11	8.10	8.04	8.01	7.97	8.02	8.10	8.14	8.23	8.25	8.31	8.26							
70	6.52	6.51	6.44	6.42	6.37	6.43	6.50	6.54	6.62	6.64	6.70	6.65							
75	4.93	4.93	4.85	4.85	4.79	4.84	4.92	4.96	5.03	5.03	5.10	5.05							
80	3.36	3.36	3.28	3.27	3.22	3.28	3.35	3.39	3.44	3.45	3.50	3.48							
85	1.88	1.83	1.72	1.70	1.66	1.76	1.84	1.85	1.88	1.87	1.94	1.93							
90	0.85	0.77	0.56	0.37	0.56	0.75	0.83	0.81	0.66	0.46	0.69	0.85							
95	0.31	0.33	0.35	0.38	0.35	0.33	0.28	0.34	0.41	0.43	0.41	0.34							
100	0.30	0.34	0.35	0.38	0.35	0.33	0.27	0.33	0.44	0.44	0.43	0.33							
105	0.30	0.35	0.36	0.38	0.36	0.35	0.29	0.33	0.45	0.47	0.45	0.33							
110	0.32	0.37	0.37	0.39	0.38	0.37	0.31	0.35	0.47	0.48	0.46	0.35							
115	0.34	0.38	0.39	0.40	0.39	0.39	0.33	0.36	0.47	0.49	0.47	0.36							
120	0.36	0.40	0.40	0.41	0.41	0.41	0.34	0.38	0.48	0.49	0.48	0.37							
125	0.38	0.42	0.41	0.43	0.42	0.43	0.36	0.39	0.49	0.50	0.48	0.38							
130	0.39	0.44	0.43	0.44	0.44	0.44	0.39	0.41	0.50	0.50	0.49	0.40							
135	0.41	0.45	0.45	0.46	0.45	0.46	0.40	0.42	0.51	0.50	0.49	0.40							
140	0.43	0.46	0.46	0.49	0.47	0.47	0.42	0.43	0.51	0.50	0.49	0.41							
145	0.44	0.48	0.48	0.51	0.48	0.49	0.44	0.44	0.51	0.51	0.50	0.42							
150	0.46	0.49	0.49	0.53	0.49	0.51	0.46	0.45	0.52	0.51	0.50	0.44							
155	0.48	0.50	0.49	0.53	0.50	0.51	0.47	0.47	0.52	0.51	0.51	0.45							
160	0.50	0.53	0.50	0.54	0.51	0.53	0.49	0.48	0.52	0.51	0.52	0.47							
165	0.51	0.53	0.52	0.54	0.52	0.54	0.52	0.50	0.53	0.51	0.52	0.49							
170	0.52	0.54	0.53	0.54	0.53	0.54	0.53	0.51	0.54	0.53	0.54	0.51							
175	0.52	0.54	0.53	0.54	0.53	0.54	0.53	0.52	0.54	0.53	0.54	0.53							
180	0.53	0.54	0.54	0.54	0.54	0.54	0.53	0.53	0.54	0.54	0.54	0.54							

C Range: 0 - 360DEG

C Interval: 30.0DEG

Test Speed: HIGH

Temperature:25.3℃

Operators:

Test Date:2025-03-11

γ Range: 0 - 180DEG

γ Interval: 1.0DEG

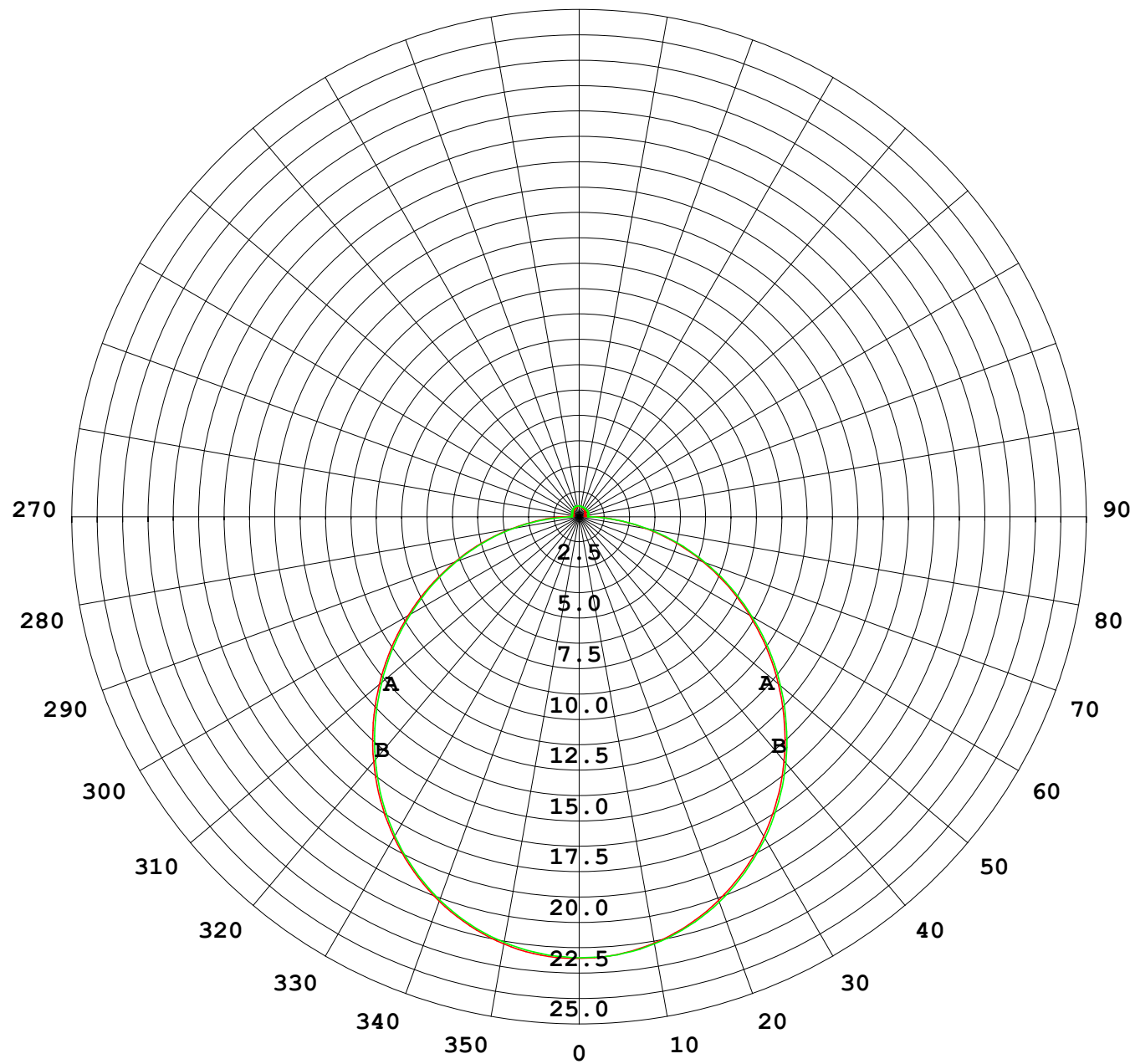
Test System:EVERFINE GO-2000B_V1 SYSTEM V2.00.488

Humidity:65.0%

Test Distance:6.360m [K=1.0000]

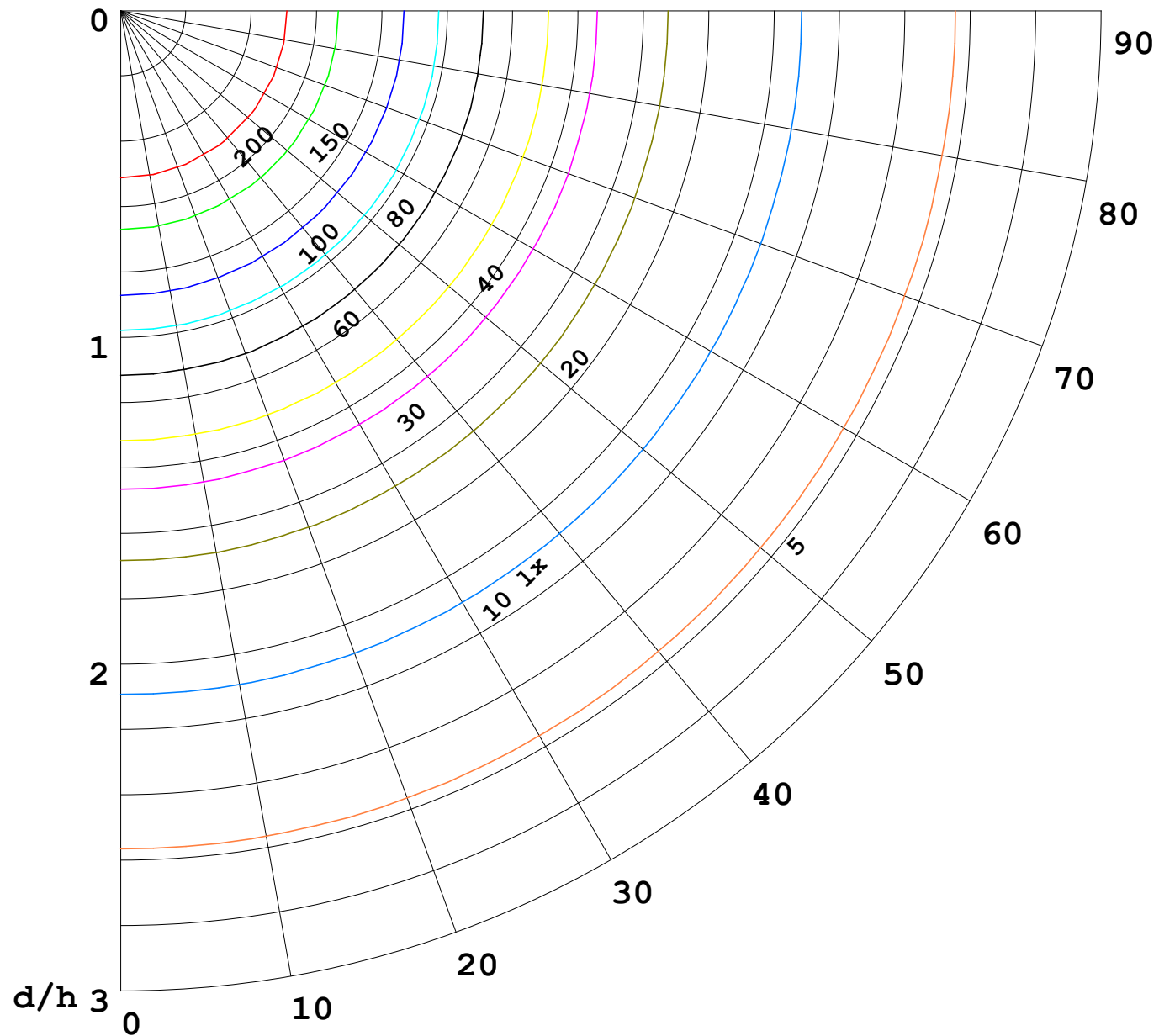
Remarks:

I (cd)



1000 lm

$\kappa = 1$



F = 1000 lm
 K = 0.7
 Hcc = 0.8 m
 Hfc = 0.0 m
 Eave = 100 lx

	Pcc	Pw	Pfc
—————	70	50	30
—————	50	30	20

