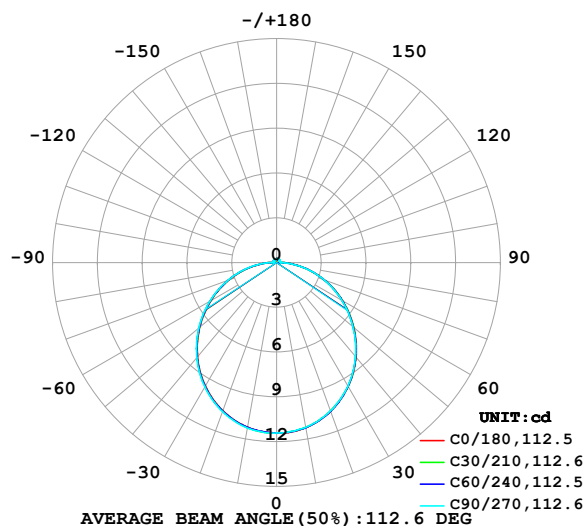


LUMINAIRE PHOTOMETRIC TEST REPORT

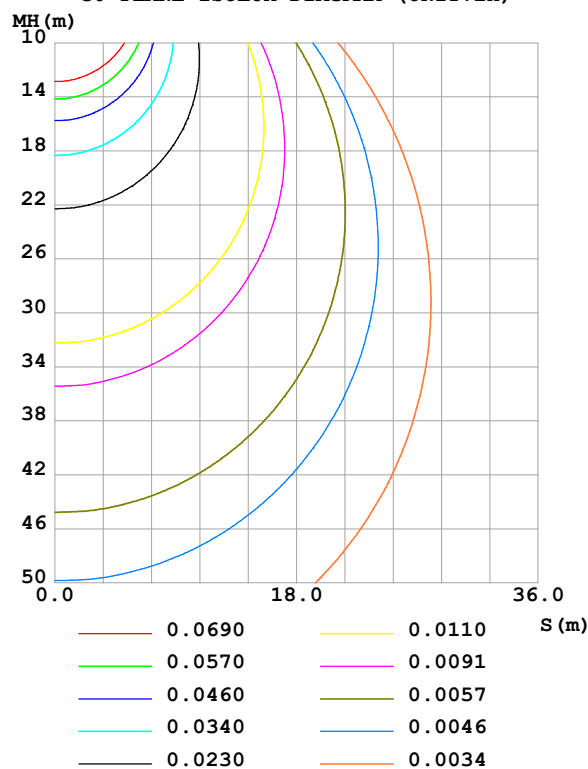
Test:U:24.00V I:0.4243A P:10.18W PF:1.000 Freq:0Hz Lamp Flux:34.9289x1 lm		
NAME: SF16-24V-5050-70-SPI-RGBW(4000K)-B	TYPE:	WEIGHT:
SPEC.:	DIM.: Length=1m	SERIAL No.:
MFR.: OLympia lighting	SUR.:	Shielding Angle:

DATA OF LAMP		PHOTOMETRIC DATA				Eff: 3.43 lm/W
MODEL	5050	I _{max} (cd)	11.43	S/MH(C0/180)	1.24	
NOMINAL POWER(W)		LOR(%)	100.1	S/MH(C90/270)	1.25	
RATED VOLTAGE(V)	24	TOTAL FLUX(lm)	34.948	η UP,DN(C0-180)	1.9,47.8	
NOMINAL FLUX(lm)	34.9289	CIE CLASS	DIRECT	η UP,DN(C180-360)	2.0,48.3	
LAMPS INSIDE	1	η up (%)	3.9	CIBSE SHR NOM	1.25	
TEST VOLTAGE(V)		η down (%)	96.1	CIBSE SHR MAX	1.35	

LUMINOUS INTENSITY DISTRIBUTION DIAGRAM



C0 PLANE ISOLUX DIAGRAM (UNIT:lx)



C Range: 0 - 360DEG
C Interval: 30.0DEG
Test Speed: HIGH
Temperature:25.3℃
Operators:
Test Date:2025-03-11

γ Range: 0 - 180DEG
γ Interval: 1.0DEG
Test System:EVERFINE GO-2000B_V1 SYSTEM V2.00.488
Humidity:65.0%
Test Distance:6.360m [K=1.0000]
Remarks:

ZONAL FLUX DIAGRAM

ZONAL FLUX DIAGRAM:

γ	C0	C45	C90	C135	C180	C225	C270	C315	γ	Φ zone	Φ total	%lum, lamp
10	11.23	11.22	11.21	11.21	11.20	11.22	11.25	11.24	0- 10	1.081	1.081	3.09,3.09
20	10.59	10.58	10.58	10.57	10.56	10.59	10.62	10.62	10- 20	3.091	4.172	11.9,11.9
30	9.596	9.579	9.563	9.553	9.553	9.594	9.623	9.629	20- 30	4.668	8.839	25.3,25.3
40	8.283	8.251	8.223	8.227	8.242	8.283	8.324	8.330	30- 40	5.606	14.45	41.3,41.4
50	6.751	6.718	6.681	6.686	6.716	6.764	6.808	6.814	40- 50	5.806	20.25	57.9,58
60	5.100	5.071	5.043	5.032	5.071	5.119	5.159	5.169	50- 60	5.300	25.55	73.1,73.2
70	3.418	3.393	3.389	3.349	3.400	3.440	3.478	3.485	60- 70	4.214	29.77	85.2,85.2
80	1.762	1.741	1.734	1.697	1.735	1.776	1.809	1.819	70- 80	2.728	32.49	93,93
90	0.4511	0.3508	0.2630	0.3377	0.4205	0.3796	0.2406	0.3953	80- 90	1.077	33.57	96.1,96.1
100	0.1597	0.1824	0.2413	0.1837	0.1431	0.2006	0.2266	0.1939	90-100	0.2434	33.81	96.8,96.8
110	0.1645	0.1908	0.2195	0.1885	0.1622	0.2056	0.2339	0.2028	100-110	0.2048	34.02	97.3,97.4
120	0.1758	0.2016	0.2182	0.2045	0.1818	0.2156	0.2432	0.2107	110-120	0.1990	34.22	97.9,98
130	0.1917	0.2159	0.2349	0.2210	0.1979	0.2259	0.2458	0.2194	120-130	0.1913	34.41	98.5,98.5
140	0.2077	0.2330	0.2513	0.2332	0.2165	0.2344	0.2473	0.2268	130-140	0.1746	34.58	99,99
150	0.2308	0.2524	0.2689	0.2499	0.2309	0.2425	0.2514	0.2381	140-150	0.1499	34.73	99.4,99.4
160	0.2424	0.2625	0.2699	0.2601	0.2568	0.2534	0.2558	0.2493	150-160	0.1159	34.85	99.7,99.8
170	0.2545	0.2654	0.2708	0.2646	0.2640	0.2581	0.2592	0.2636	160-170	0.0735	34.92	99.9,100
180	0.2655	0.2684	0.2714	0.2684	0.2655	0.2670	0.2686	0.2684	170-180	0.0253	34.95	100,100
DEG	LUMINOUS INTENSITY:cd									UNIT:lm		

Conical surface Flux(90deg): 17.37 lm

%lum = 49.7%

%lamp = 49.7%

Conical surface Flux(130deg): 27.825 lm

%lum = 79.6%

%lamp = 79.7%

C Range: 0 - 360DEG
 C Interval: 30.0DEG
 Test Speed: HIGH
 Temperature:25.3℃
 Operators:
 Test Date:2025-03-11

γ Range: 0 - 180DEG
 γ Interval: 1.0DEG
 Test System:EVERFINE GO-2000B_V1 SYSTEM V2.00.488
 Humidity:65.0%
 Test Distance:6.360m [K=1.0000]
 Remarks:

LUMINANCE LIMITATION CURVES

Test:U:24.00V I:0.4243A P:10.18W PF:1.000 Freq:0Hz Lamp Flux:34.9289x1 lm		
NAME: SF16-24V-5050-70-SPI-RGBW(4000K)-B	TYPE:	WEIGHT:
SPEC.:	DIM.: Length=1m	SERIAL No.:
MFR.: OLympia lighting	SUR.:	Shielding Angle:



LUMINANCE cd/(m2)		
G (DEG)	C0/180	C90/270
85	688	631
80	615	605
75	605	599
70	606	600
65	611	604
60	618	611
55	627	619
50	637	630
45	646	640

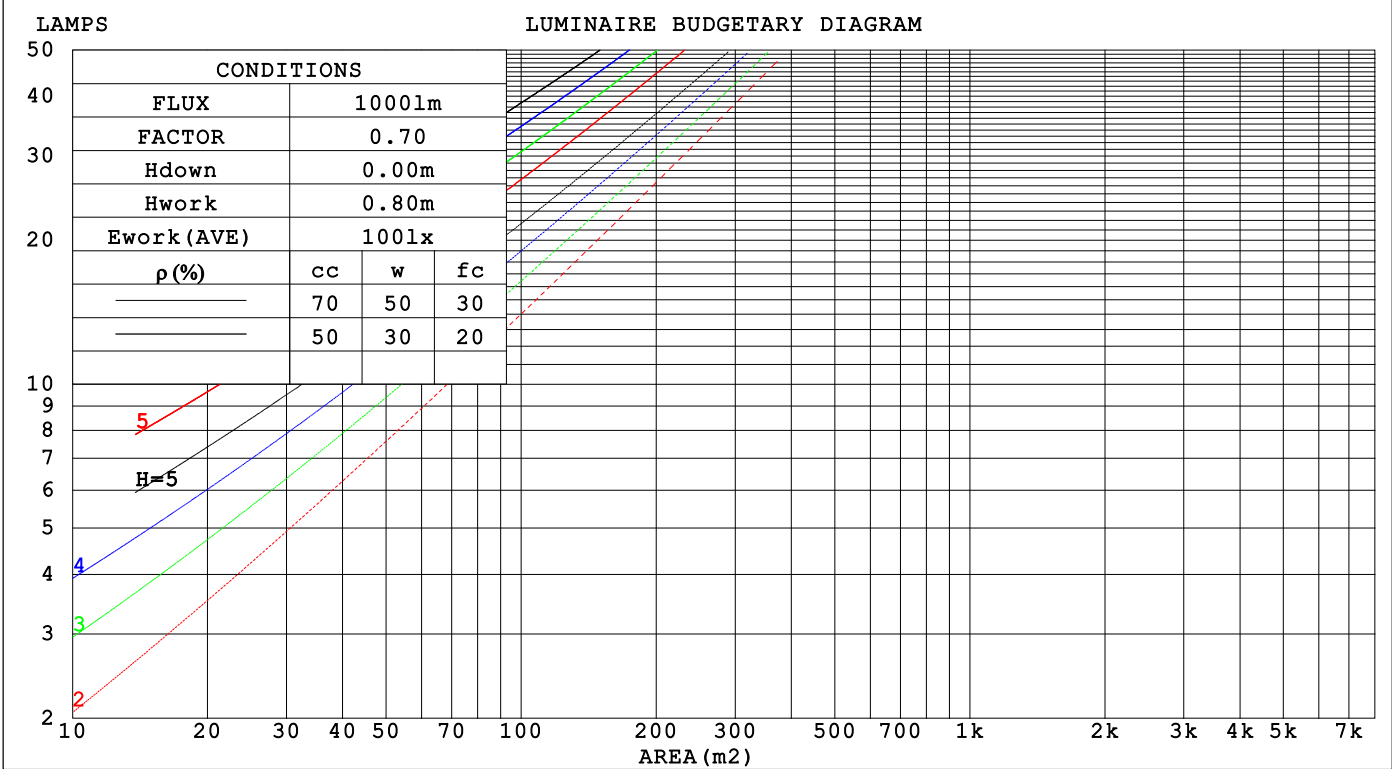
C Range: 0 - 360DEG
C Interval: 30.0DEG
Test Speed: HIGH
Temperature:25.3℃
Operators:
Test Date:2025-03-11

γ Range: 0 - 180DEG
γ Interval: 1.0DEG
Test System:EVERFINE GO-2000B_V1 SYSTEM V2.00.488
Humidity:65.0%
Test Distance:6.360m [K=1.0000]
Remarks:

CU AND LUMINAIRE BUDGETARY ESTIMATE DIAGRAM

Test:U:24.00V I:0.4243A P:10.18W PF:1.000 Freq:0Hz		
Lamp Flux:34.9289x1 lm		
NAME: SF16-24V-5050-70-SPI-RGBW(4000K)-B	TYPE:	WEIGHT:
SPEC.:	DIM.: Length=1m	SERIAL No.:
MFR.: OLYMPIA lighting	SUR.:	Shielding Angle:

pcc	80%			70%			50%			30%			10%			0
pw	50%	30%	10%	50%	30%	10%	50%	30%	10%	50%	30%	10%	50%	30%	10%	0
pfc	20%			20%			20%			20%			20%			0
RCR	RCR:Room Cavity Ratio			Coefficients of Utilization(CU)												
0.0	1.18	1.18	1.18	1.15	1.15	1.15	1.09	1.09	1.09	1.04	1.04	1.04	.98	.98	.98	.96
1.0	1.02	.98	.93	.99	.95	.92	.94	.91	.88	.90	.87	.85	.86	.83	.81	.79
2.0	.89	.81	.76	.86	.80	.74	.82	.77	.72	.78	.74	.70	.75	.71	.68	.65
3.0	.78	.69	.62	.76	.68	.62	.72	.65	.60	.69	.63	.58	.66	.61	.57	.55
4.0	.69	.60	.53	.67	.59	.52	.64	.57	.51	.61	.55	.50	.58	.53	.49	.46
5.0	.61	.52	.45	.60	.51	.45	.57	.50	.44	.55	.48	.43	.53	.47	.42	.40
6.0	.55	.46	.39	.54	.45	.39	.52	.44	.38	.50	.43	.38	.48	.42	.37	.35
7.0	.50	.41	.35	.49	.40	.34	.47	.39	.34	.45	.38	.33	.43	.37	.33	.31
8.0	.45	.37	.31	.45	.36	.31	.43	.36	.30	.41	.35	.30	.40	.34	.29	.27
9.0	.42	.33	.28	.41	.33	.28	.39	.32	.27	.38	.32	.27	.37	.31	.27	.25
10.0	.38	.30	.25	.38	.30	.25	.37	.30	.25	.35	.29	.24	.34	.28	.24	.22



C Range: 0 - 360DEG
C Interval: 30.0DEG
Test Speed: HIGH
Temperature:25.3℃
Operators:
Test Date:2025-03-11

γ Range: 0 - 180DEG
γ Interval: 1.0DEG
Test System:EVERFINE GO-2000B_V1 SYSTEM V2.00.488
Humidity:65.0%
Test Distance:6.360m [K=1.0000]
Remarks:

WEC AND CCEC

Test:U:24.00V I:0.4243A P:10.18W PF:1.000 Freq:0Hz Lamp Flux:34.9289x1 lm		
NAME: SF16-24V-5050-70-SPI-RGBW(4000K)-B	TYPE:	WEIGHT:
SPEC.:	DIM.: Length=1m	SERIAL No.:
MFR.: OLYMPIA lighting	SUR.:	Shielding Angle:

pcc	80%			70%			50%			30%			10%			0														
pw	50%	30%	10%	50%	30%	10%	50%	30%	10%	50%	30%	10%	50%	30%	10%	0														
pfc	20%			20%			20%			20%			20%			0														
RCR	RCR:Room Cavity Ratio															Wall Exitance Coefficients(WEC)														
0.0																														
1.0	.327	.186	.059	.319	.182	.058	.303	.174	.056	.289	.166	.053	.275	.160	.051															
2.0	.301	.165	.051	.294	.162	.050	.280	.156	.048	.267	.150	.047	.255	.144	.046															
3.0	.276	.147	.044	.269	.144	.043	.257	.139	.042	.246	.135	.041	.235	.130	.040															
4.0	.253	.132	.039	.247	.129	.038	.236	.125	.037	.226	.121	.037	.216	.118	.036															
5.0	.233	.119	.034	.228	.117	.034	.218	.113	.033	.209	.110	.033	.200	.107	.032															
6.0	.215	.108	.031	.211	.106	.031	.202	.103	.030	.194	.101	.030	.186	.098	.029															
7.0	.200	.099	.028	.196	.098	.028	.188	.095	.027	.180	.092	.027	.173	.090	.026															
8.0	.187	.091	.026	.183	.090	.025	.176	.088	.025	.169	.085	.025	.162	.083	.024															
9.0	.175	.084	.024	.171	.083	.023	.165	.081	.023	.158	.079	.023	.153	.078	.022															
10.0	.164	.079	.022	.161	.078	.022	.155	.076	.021	.149	.074	.021	.144	.072	.021															

pcc	80%			70%			50%			30%			10%			0
pw	50%	30%	10%	50%	30%	10%	50%	30%	10%	50%	30%	10%	50%	30%	10%	0
pfc	20%			20%			20%			20%			20%			0
RCR	RCR:Room Cavity Ratio						Ceiling Cavity Exitance Coefficients (CCEC)									
0.0	.221	.221	.221	.189	.189	.189	.129	.129	.129	.074	.074	.074	.024	.024	.024	
1.0	.212	.186	.163	.181	.160	.141	.124	.110	.097	.071	.064	.057	.023	.020	.018	
2.0	.204	.162	.127	.175	.140	.110	.120	.097	.077	.069	.056	.045	.022	.018	.015	
3.0	.196	.145	.104	.168	.125	.090	.116	.087	.063	.067	.051	.037	.021	.016	.012	
4.0	.189	.132	.089	.162	.114	.077	.111	.079	.054	.064	.047	.032	.021	.015	.011	
5.0	.181	.122	.078	.156	.105	.068	.107	.074	.048	.062	.043	.028	.020	.014	.009	
6.0	.174	.113	.070	.149	.098	.061	.103	.069	.043	.060	.040	.026	.019	.013	.008	
7.0	.167	.107	.064	.144	.092	.056	.099	.065	.040	.058	.038	.024	.019	.012	.008	
8.0	.160	.101	.060	.138	.087	.052	.096	.061	.037	.056	.036	.022	.018	.012	.007	
9.0	.154	.096	.056	.133	.083	.049	.092	.058	.035	.054	.035	.021	.017	.011	.007	
10.0	.149	.092	.054	.128	.080	.047	.089	.056	.033	.052	.033	.020	.017	.011	.007	

C Range: 0 - 360DEG
C Interval: 30.0DEG
Test Speed: HIGH
Temperature:25.3℃
Operators:
Test Date:2025-03-11

γ Range: 0 - 180DEG
γ Interval: 1.0DEG
Test System:EVERFINE GO-2000B_V1 SYSTEM V2.00.488
Humidity:65.0%
Test Distance:6.360m [K=1.0000]
Remarks:

UGR(Unified Glare Rating) Table

Test:U:24.00V I:0.4243A P:10.18W PF:1.000 Freq:0Hz Lamp Flux:34.9289x1 lm											
NAME: SF16-24V-5050-70-SPI-RGBW(4000K)-B						TYPE:		WEIGHT:			
SPEC.:						DIM.: Length=1m		SERIAL No.:			
MFR.: OLympia lighting						SUR.:		Shielding Angle:			
ceiling/cavity	0.7	0.7	0.5	0.5	0.3	0.7	0.7	0.5	0.5	0.3	
walls	0.5	0.3	0.5	0.3	0.3	0.5	0.3	0.5	0.3	0.3	
working plane	0.2	0.2	0.2	0.2	0.2	0.2	0.2	0.2	0.2	0.2	
Room dimensions		Viewed crosswise					Viewed endwise				
x = 2H y = 2H	22.5	24.0	22.9	24.3	24.6	22.5	24.0	22.8	24.2	24.5	
	3H	24.2	25.6	24.6	25.9	26.2	24.2	25.5	24.5	25.8	26.2
	4H	25.0	26.3	25.3	26.6	26.9	24.9	26.2	25.3	26.6	26.9
	6H	25.6	26.8	26.0	27.2	27.6	25.6	26.8	25.9	27.1	27.5
	8H	25.9	27.1	26.3	27.4	27.8	25.8	27.0	26.2	27.3	27.7
	12H	26.1	27.2	26.5	27.6	28.0	26.0	27.1	26.4	27.5	27.9
4H	2H	23.2	24.5	23.5	24.8	25.1	23.1	24.4	23.5	24.8	25.1
	3H	25.0	26.2	25.5	26.6	26.9	25.0	26.2	25.4	26.5	26.9
	4H	25.9	27.0	26.4	27.4	27.8	25.9	27.0	26.3	27.3	27.8
	6H	26.7	27.7	27.2	28.1	28.5	26.7	27.6	27.1	28.0	28.5
	8H	27.1	27.9	27.5	28.4	28.8	27.0	27.9	27.5	28.3	28.8
	12H	27.3	28.1	27.8	28.6	29.1	27.3	28.1	27.8	28.5	29.0
8H	4H	26.3	27.1	26.7	27.6	28.1	26.2	27.1	26.7	27.5	28.0
	6H	27.3	28.0	27.8	28.5	29.0	27.2	27.9	27.7	28.4	28.9
	8H	27.7	28.3	28.2	28.8	29.4	27.6	28.3	28.2	28.8	29.3
	12H	28.1	28.7	28.6	29.2	29.7	28.0	28.6	28.6	29.1	29.7
12H	4H	26.3	27.1	26.8	27.6	28.1	26.3	27.1	26.8	27.5	28.0
	6H	27.4	28.0	27.9	28.5	29.0	27.3	28.0	27.8	28.4	29.0
	8H	27.9	28.4	28.4	28.9	29.5	27.8	28.4	28.3	28.9	29.4
Variations with the observer position at spacings(CIE Pub.117):											
S = 1.0H	+ 0.1 / - 0.2					+ 0.1 / - 0.2					
1.5H	+ 0.2 / - 0.3					+ 0.2 / - 0.3					
2.0H	+ 0.1 / - 0.3					+ 0.1 / - 0.3					

CIE Pub.117, 34.93 lm Total Lamp Luminous Flux Correct (8log(F/F0) = -11.7)
Area: 0.0165 m2

C Range: 0 - 360DEG
C Interval: 30.0DEG
Test Speed: HIGH
Temperature:25.3℃
Operators:
Test Date:2025-03-11

γ Range: 0 - 180DEG
γ Interval: 1.0DEG
Test System:EVERFINE GO-2000B_V1 SYSTEM V2.00.488
Humidity:65.0%
Test Distance:6.360m [K=1.0000]
Remarks:

UTILIZATION FACTORS TABLE

Test:U:24.00V I:0.4243A P:10.18W PF:1.000 Freq:0Hz Lamp Flux:34.9289x1 lm		
NAME: SF16-24V-5050-70-SPI-RGBW(4000K)-B	TYPE:	WEIGHT:
SPEC.:	DIM.: Length=1m	SERIAL No.:
MFR.: OLympia lighting	SUR.:	Shielding Angle:

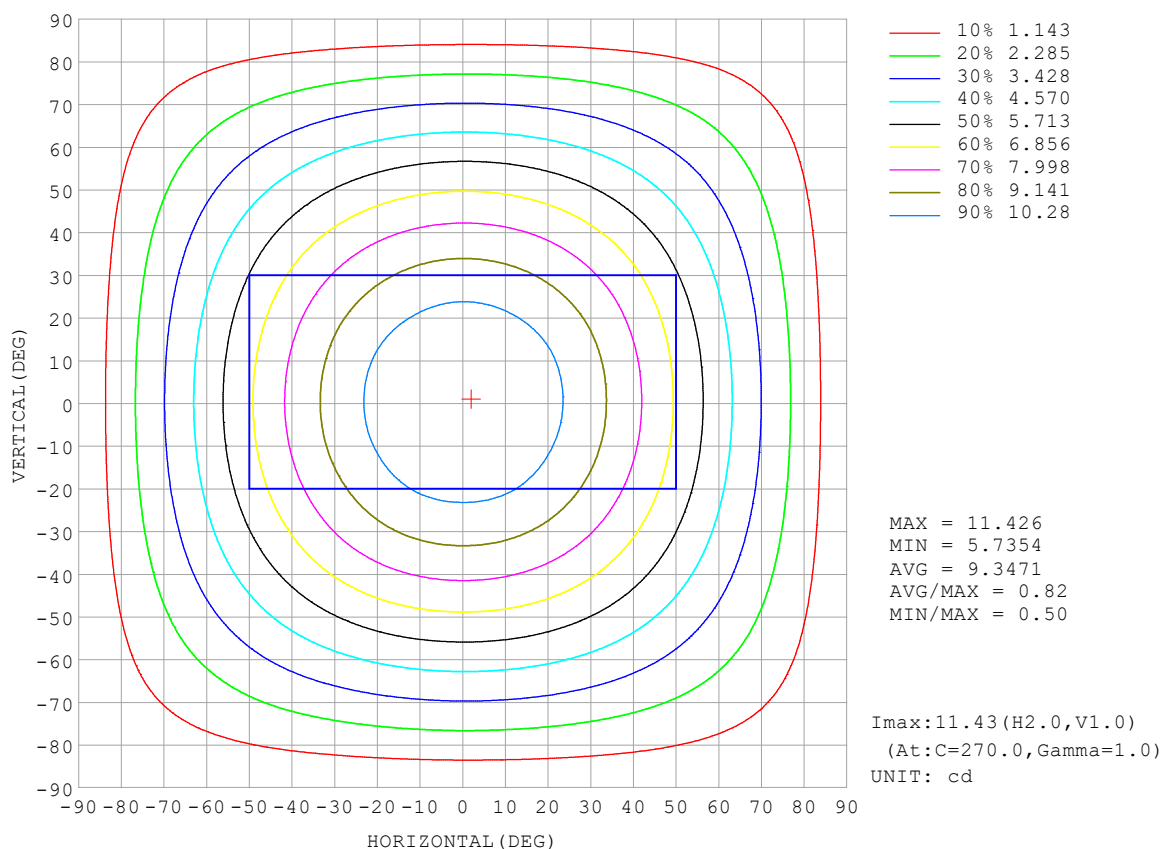
REFLECTANCE										
Ceiling	0.8	0.8	0.8	0.7	0.7	0.7	0.5	0.5	0.5	0
Walls	0.7	0.5	0.3	0.7	0.5	0.3	0.7	0.5	0.3	0
Working plane	0.2	0.2	0.2	0.2	0.2	0.2	0.2	0.2	0.2	0
ROOM INDEX	UTILIZATION FACTORS (PERCENT) $k(RI) \times RCR = 5$									
$k = 0.60$	56	44	37	55	44	37	53	43	36	30
0.80	65	54	46	64	53	46	62	52	45	38
1.00	74	62	55	72	62	54	70	63	54	46
1.25	81	70	62	79	69	62	76	67	61	53
1.50	86	75	68	84	74	67	80	72	66	58
2.00	93	84	77	91	82	76	86	80	74	65
2.50	97	88	82	94	87	81	90	84	79	69
3.00	100	93	87	98	91	86	93	88	83	73
4.00	104	98	93	102	96	91	97	92	88	78
5.00	107	102	97	104	99	95	99	95	92	81
ROOM INDEX	UF (total)									Direct
According to DIN EN 13032-2 2004			Suspended					SHRNOM = 1.25		

C Range: 0 - 360DEG
 C Interval: 30.0DEG
 Test Speed: HIGH
 Temperature: 25.3°C
 Operators:
 Test Date: 2025-03-11

γ Range: 0 - 180DEG
 γ Interval: 1.0DEG
 Test System: EVERFINE GO-2000B_V1 SYSTEM V2.00.488
 Humidity: 65.0%
 Test Distance: 6.360m [K=1.0000]
 Remarks:

ISOCANDELA DIAGRAM

Test:U:24.00V I:0.4243A P:10.18W PF:1.000 Freq:0Hz Lamp Flux:34.9289x1 lm		
NAME: SF16-24V-5050-70-SPI-RGBW(4000K)-B	TYPE:	WEIGHT:
SPEC.:	DIM.: Length=1m	SERIAL No.:
MFR.: OLympia lighting	SUR.:	Shielding Angle:

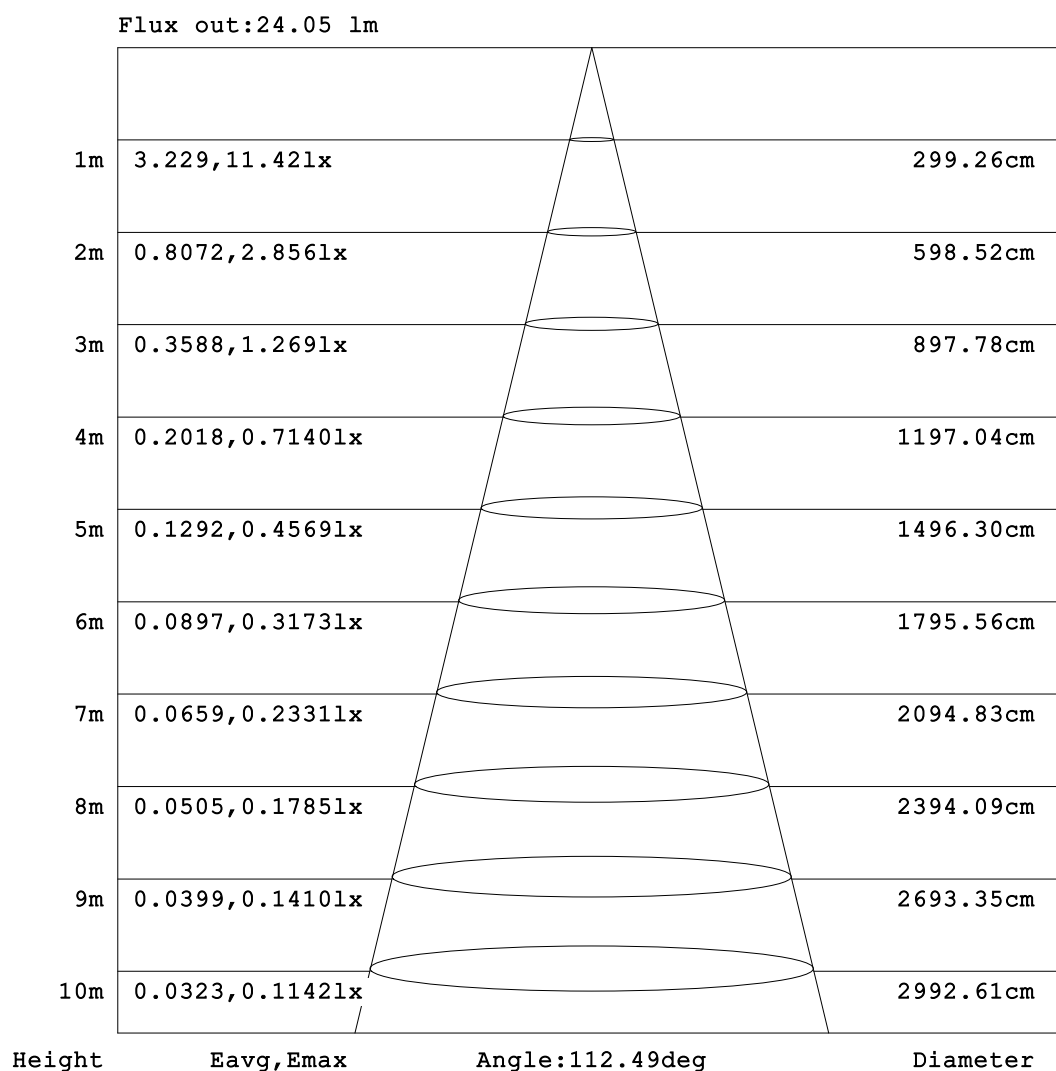


C Range: 0 - 360DEG
C Interval: 30.0DEG
Test Speed: HIGH
Temperature:25.3℃
Operators:
Test Date:2025-03-11

γ Range: 0 - 180DEG
γ Interval: 1.0DEG
Test System:EVERFINE GO-2000B_V1 SYSTEM V2.00.488
Humidity:65.0%
Test Distance:6.360m [K=1.0000]
Remarks:

AAI Figure

Test:U:24.00V I:0.4243A P:10.18W PF:1.000 Freq:0Hz Lamp Flux:34.9289x1 lm		
NAME: SF16-24V-5050-70-SPI-RGBW(4000K)-B	TYPE:	WEIGHT:
SPEC.:	DIM.: Length=1m	SERIAL No.:
MFR.: OLympia lighting	SUR.:	Shielding Angle:



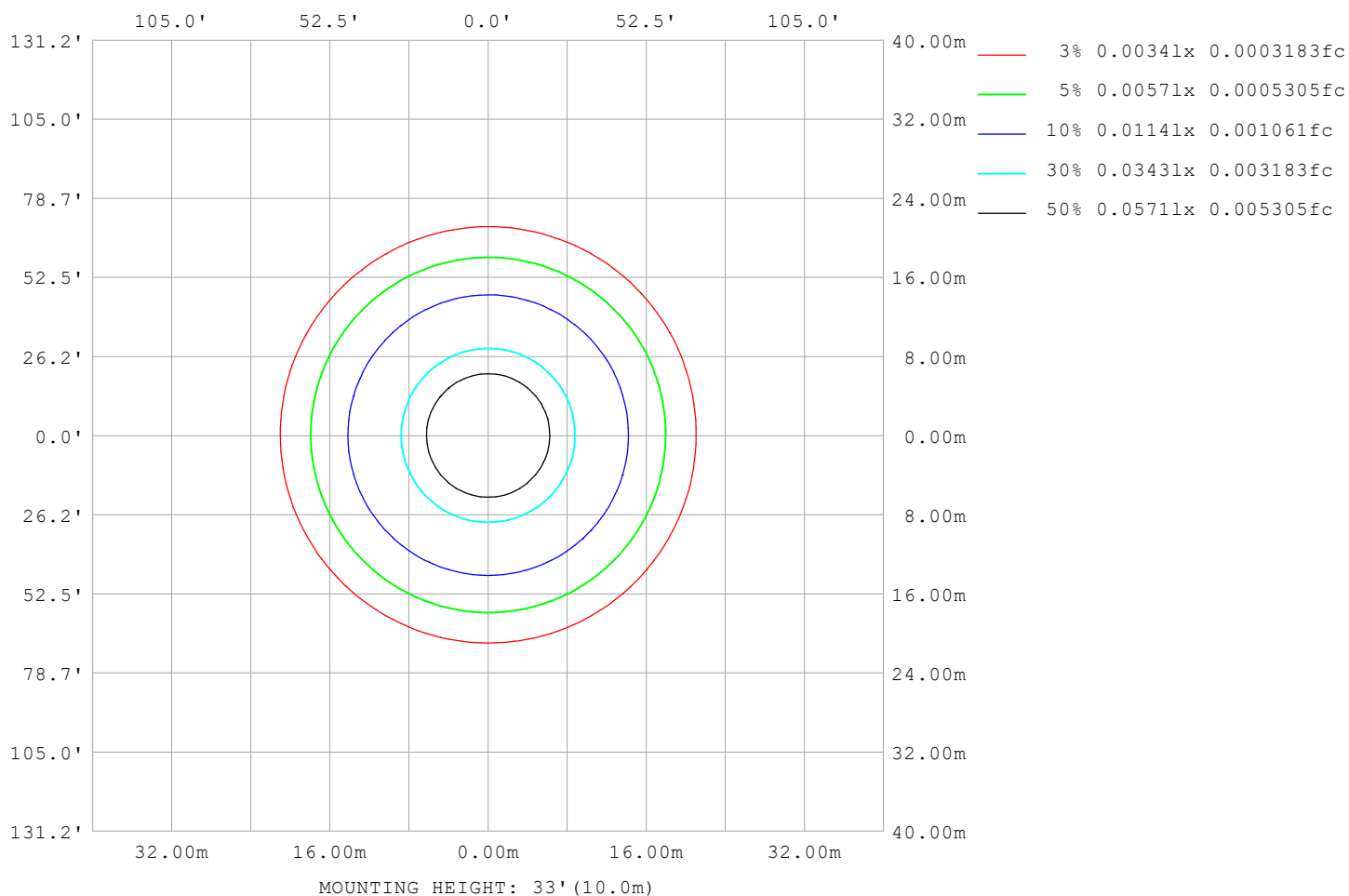
Note:The Curves indicate the illuminated area and the average illumination when the luminaire is at different distance.

C Range: 0 - 360DEG
C Interval: 30.0DEG
Test Speed: HIGH
Temperature:25.3℃
Operators:
Test Date:2025-03-11

γ Range: 0 - 180DEG
γ Interval: 1.0DEG
Test System:EVERFINE GO-2000B_V1 SYSTEM V2.00.488
Humidity:65.0%
Test Distance:6.360m [K=1.0000]
Remarks:

ISOLUX DIAGRAM

Test:U:24.00V I:0.4243A P:10.18W PF:1.000 Freq:0Hz Lamp Flux:34.9289x1 lm		
NAME: SF16-24V-5050-70-SPI-RGBW(4000K)-B	TYPE:	WEIGHT:
SPEC.:	DIM.: Length=1m	SERIAL No.:
MFR.: OLympia lighting	SUR.:	Shielding Angle:



C Range: 0 - 360DEG
C Interval: 30.0DEG
Test Speed: HIGH
Temperature: 25.3°C
Operators:
Test Date: 2025-03-11

γ Range: 0 - 180DEG
γ Interval: 1.0DEG
Test System: EVERFINE GO-2000B_V1 SYSTEM V2.00.488
Humidity: 65.0%
Test Distance: 6.360m [K=1.0000]
Remarks:

LED Avg.L Report

Test:U:24.00V I:0.4243A P:10.18W PF:1.000 Freq:0Hz Lamp Flux:34.9289x1 lm		
NAME: SF16-24V-5050-70-SPI-RGBW(4000K)-B	TYPE:	WEIGHT:
SPEC.:	DIM.: Length=1m	SERIAL No.:
MFR.: OLympia lighting	SUR.:	Shielding Angle:

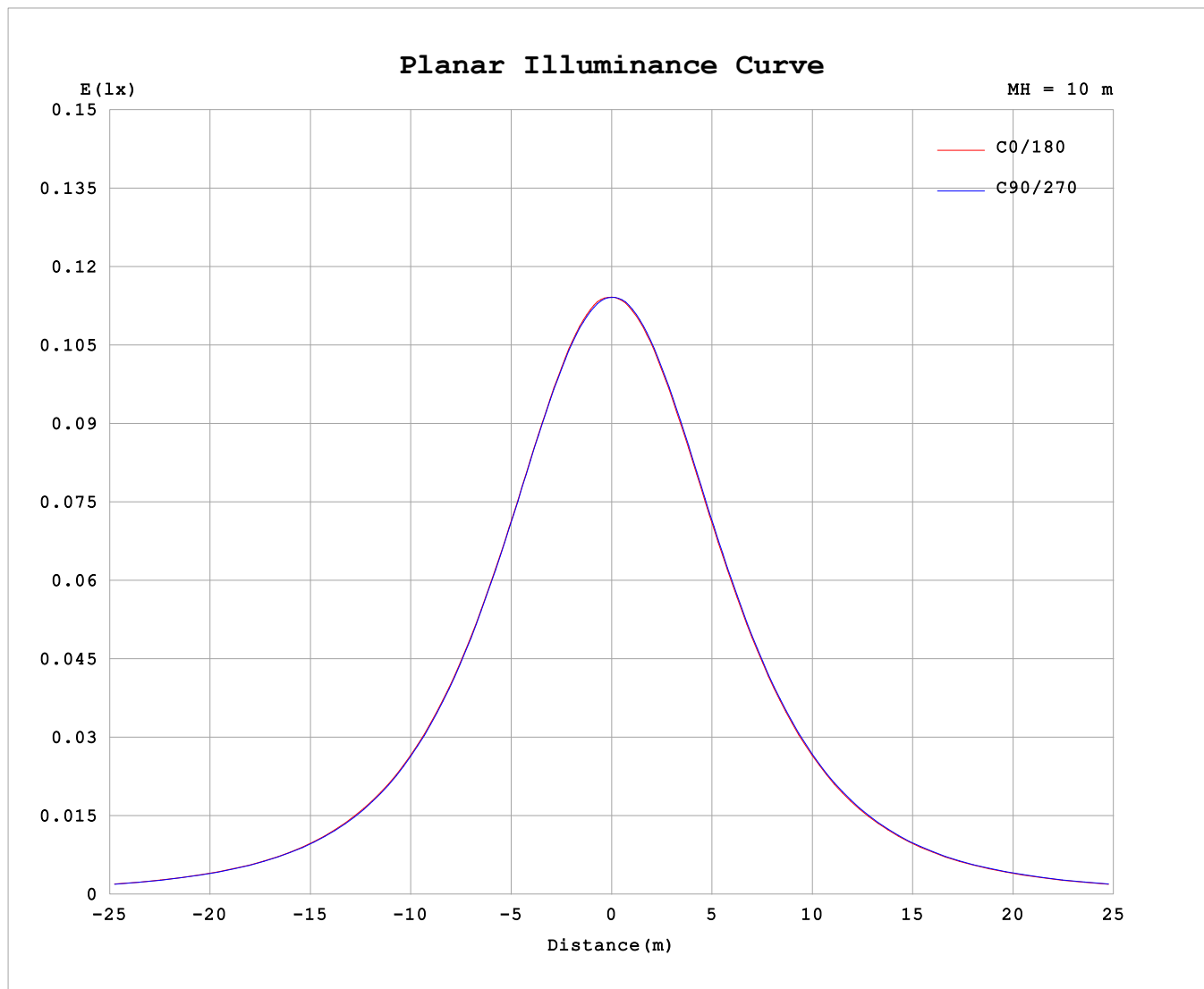
AvgL	cd/m2
L_0~180 (65) av	609
L_0~180 (75) av	602
L_0~180 (85) av	674
L_90~270 (65) av	611
L_90~270 (75) av	608
L_90~270 (85) av	657
L_45 (65) av	610
L_45 (75) av	604
L_45 (85) av	661

Standard: GB/T 29293-2012

C Range: 0 - 360DEG
C Interval: 30.0DEG
Test Speed: HIGH
Temperature:25.3℃
Operators:
Test Date:2025-03-11

γ Range: 0 - 180DEG
γ Interval: 1.0DEG
Test System:EVERFINE GO-2000B_V1 SYSTEM V2.00.488
Humidity:65.0%
Test Distance:6.360m [K=1.0000]
Remarks:

Planar Illuminance Curve



C Range: 0 - 360DEG
C Interval: 30.0DEG
Test Speed: HIGH
Temperature: 25.3 °C
Operators:
Test Date: 2025-03-11

γ Range: 0 - 180DEG
 γ Interval: 1.0DEG
Test System: EVERFINE GO-2000B_V1 SYSTEM V2.00.488
Humidity: 65.0%
Test Distance: 6.360m [K=1.0000]
Remarks:

LUMINOUS DISTRIBUTION INTENSITY DATA

Test:U:24.00V I:0.4243A P:10.18W PF:1.000 Freq:0Hz Lamp Flux:34.9289x1 lm		
NAME: SF16-24V-5050-70-SPI-RGBW(4000K)-B	TYPE:	WEIGHT:
SPEC.:	DIM.: Length=1m	SERIAL No.:
MFR.: OLYMPIA lighting	SUR.:	Shielding Angle:

Table--1

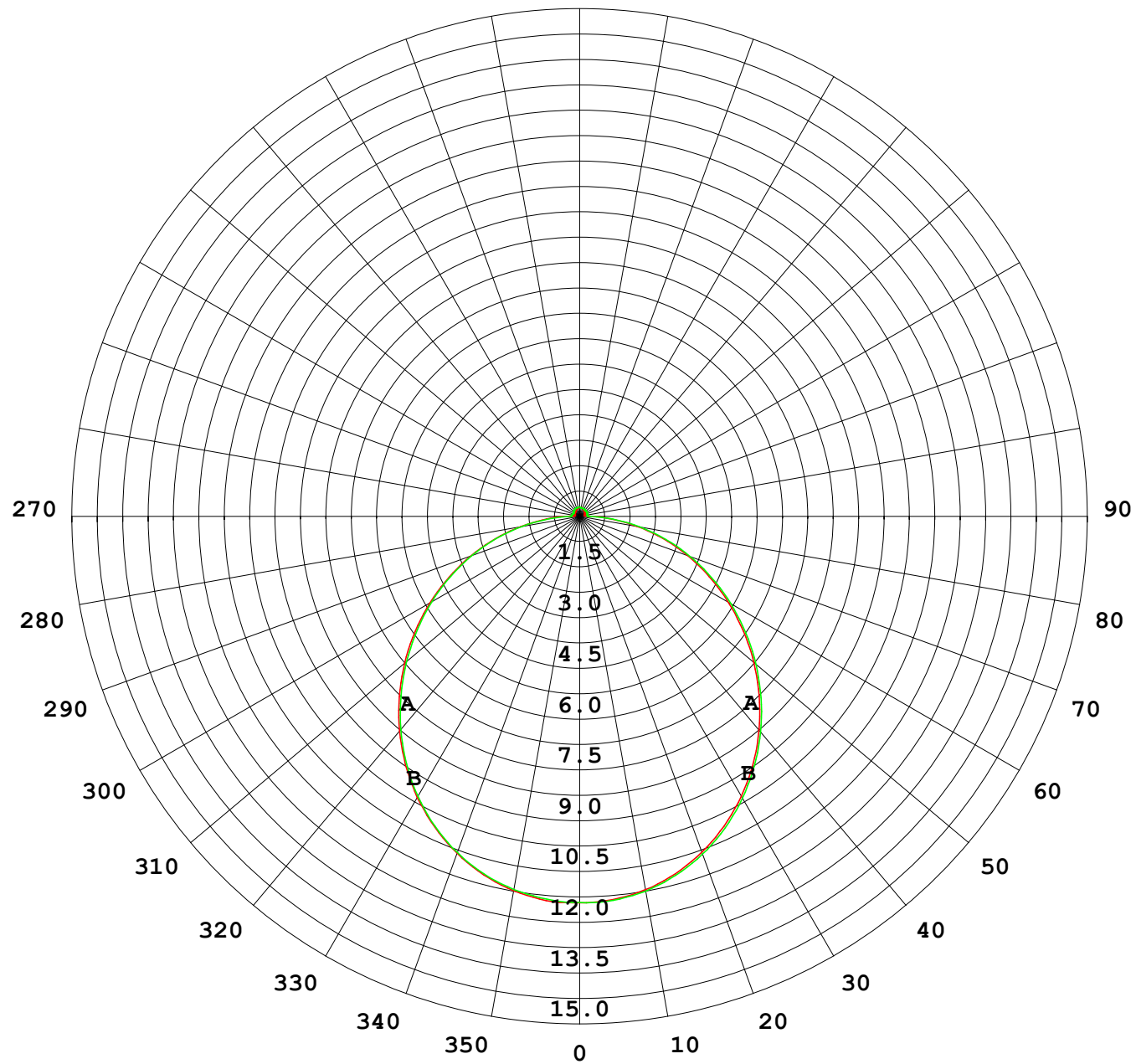
UNIT: cd

C (DEG) γ (DEG)	0	30	60	90	120	150	180	210	240	270	300	330							
0	11.4	11.4	11.4	11.4	11.4	11.4	11.4	11.4	11.4	11.4	11.4	11.4							
5	11.4	11.4	11.4	11.4	11.4	11.4	11.4	11.4	11.4	11.4	11.4	11.4							
10	11.2	11.2	11.2	11.2	11.2	11.2	11.2	11.2	11.2	11.3	11.2	11.3							
15	11.0	10.9	11.0	10.9	11.0	10.9	10.9	11.0	10.9	11.0	11.0	11.0							
20	10.6	10.6	10.6	10.6	10.6	10.5	10.6	10.6	10.6	10.6	10.6	10.6							
25	10.1	10.1	10.1	10.1	10.1	10.1	10.1	10.1	10.1	10.2	10.2	10.2							
30	9.60	9.58	9.58	9.56	9.57	9.54	9.55	9.59	9.60	9.62	9.62	9.64							
35	8.97	8.95	8.94	8.92	8.93	8.91	8.93	8.97	8.97	9.01	9.02	9.02							
40	8.28	8.26	8.25	8.22	8.23	8.22	8.24	8.28	8.29	8.32	8.33	8.33							
45	7.54	7.51	7.49	7.47	7.48	7.47	7.50	7.53	7.55	7.59	7.59	7.60							
50	6.75	6.73	6.71	6.68	6.69	6.69	6.72	6.76	6.77	6.81	6.81	6.82							
55	5.93	5.91	5.89	5.86	5.86	5.87	5.91	5.94	5.96	5.99	6.00	6.00							
60	5.10	5.08	5.07	5.04	5.03	5.04	5.07	5.11	5.13	5.16	5.17	5.17							
65	4.26	4.24	4.23	4.21	4.18	4.19	4.23	4.27	4.29	4.32	4.33	4.32							
70	3.42	3.40	3.39	3.39	3.34	3.35	3.40	3.43	3.45	3.48	3.49	3.48							
75	2.58	2.57	2.55	2.56	2.52	2.52	2.56	2.59	2.60	2.64	2.65	2.64							
80	1.76	1.75	1.73	1.73	1.70	1.70	1.74	1.77	1.78	1.81	1.82	1.82							
85	0.99	0.95	0.93	0.91	0.89	0.90	0.95	0.96	0.97	0.98	1.00	1.01							
90	0.45	0.39	0.31	0.26	0.30	0.38	0.42	0.43	0.33	0.24	0.35	0.45							
95	0.16	0.21	0.19	0.25	0.20	0.17	0.20	0.20	0.22	0.23	0.21	0.17							
100	0.16	0.18	0.19	0.24	0.19	0.17	0.14	0.18	0.22	0.23	0.22	0.17							
105	0.16	0.18	0.19	0.23	0.19	0.18	0.15	0.18	0.23	0.23	0.23	0.17							
110	0.16	0.19	0.19	0.22	0.19	0.19	0.16	0.17	0.24	0.23	0.23	0.17							
115	0.17	0.20	0.19	0.21	0.19	0.20	0.17	0.18	0.24	0.24	0.24	0.17							
120	0.18	0.21	0.20	0.22	0.20	0.21	0.18	0.19	0.25	0.24	0.24	0.18							
125	0.18	0.22	0.20	0.23	0.21	0.22	0.19	0.19	0.25	0.24	0.24	0.19							
130	0.19	0.22	0.21	0.23	0.22	0.23	0.20	0.20	0.25	0.25	0.24	0.19							
135	0.20	0.23	0.22	0.24	0.22	0.23	0.21	0.20	0.26	0.25	0.25	0.20							
140	0.21	0.24	0.23	0.25	0.23	0.24	0.22	0.21	0.26	0.25	0.25	0.20							
145	0.22	0.25	0.24	0.27	0.24	0.25	0.23	0.22	0.26	0.25	0.26	0.21							
150	0.23	0.25	0.25	0.27	0.24	0.26	0.23	0.22	0.26	0.25	0.26	0.21							
155	0.24	0.26	0.26	0.27	0.25	0.26	0.24	0.23	0.27	0.25	0.26	0.23							
160	0.24	0.27	0.26	0.27	0.25	0.27	0.26	0.24	0.27	0.26	0.27	0.23							
165	0.25	0.27	0.26	0.27	0.26	0.27	0.26	0.24	0.27	0.26	0.27	0.25							
170	0.25	0.27	0.26	0.27	0.26	0.27	0.26	0.25	0.27	0.26	0.27	0.26							
175	0.26	0.27	0.27	0.27	0.27	0.27	0.27	0.26	0.27	0.27	0.27	0.27							
180	0.27	0.27	0.27	0.27	0.27	0.27	0.27	0.27	0.27	0.27	0.27	0.27							

C Range: 0 - 360DEG
C Interval: 30.0DEG
Test Speed: HIGH
Temperature:25.3℃
Operators:
Test Date:2025-03-11

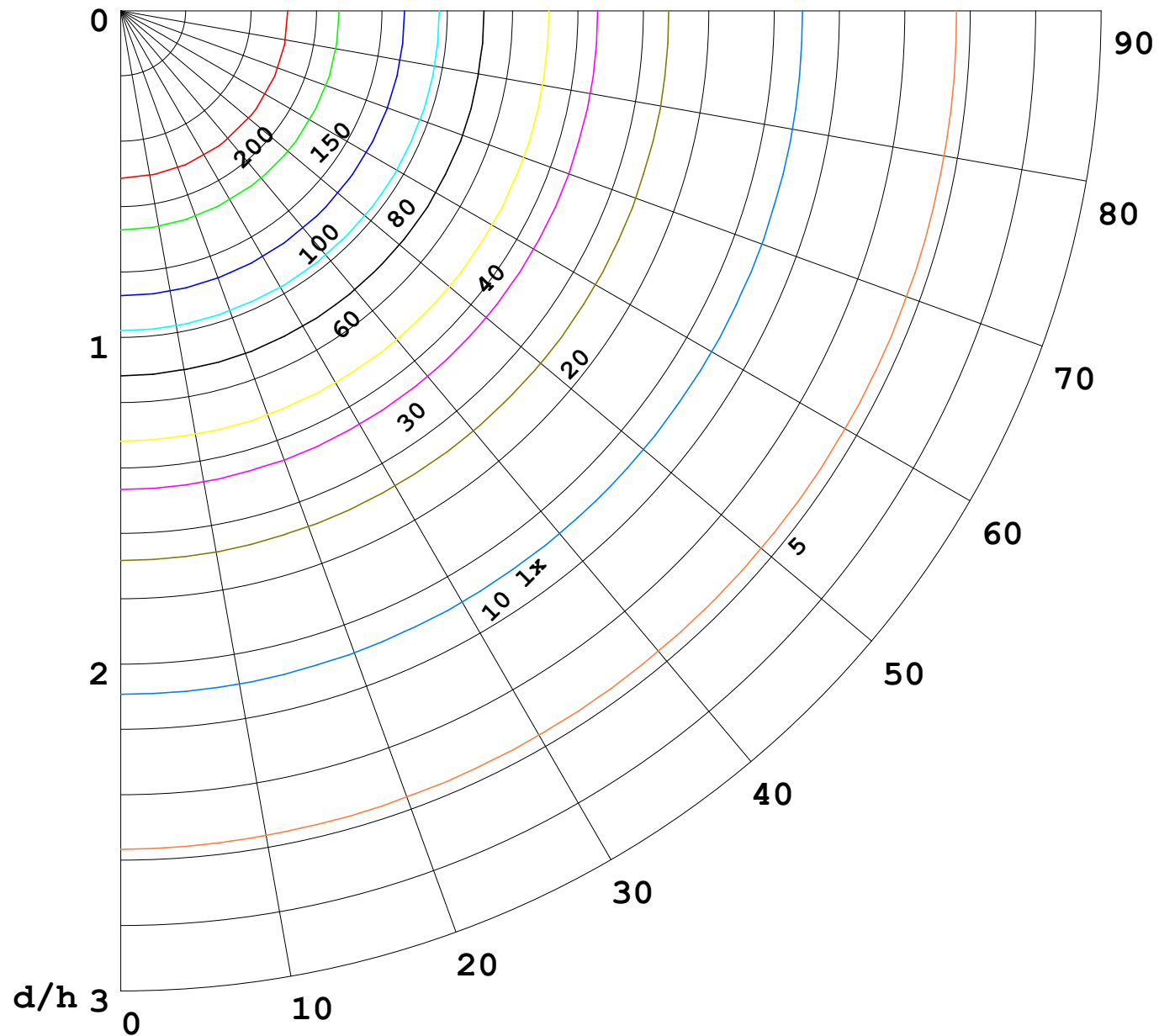
γ Range: 0 - 180DEG
γ Interval: 1.0DEG
Test System:EVERFINE GO-2000B_V1 SYSTEM V2.00.488
Humidity:65.0%
Test Distance:6.360m [K=1.0000]
Remarks:

I (cd)



1000 lm

$\kappa = 1$



F = 1000 lm
 K = 0.7
 Hcc = 0.8 m
 Hfc = 0.0 m
 Eave = 100 lx

	Pcc	Pw	Pfc
—————	70	50	30
—————	50	30	20

