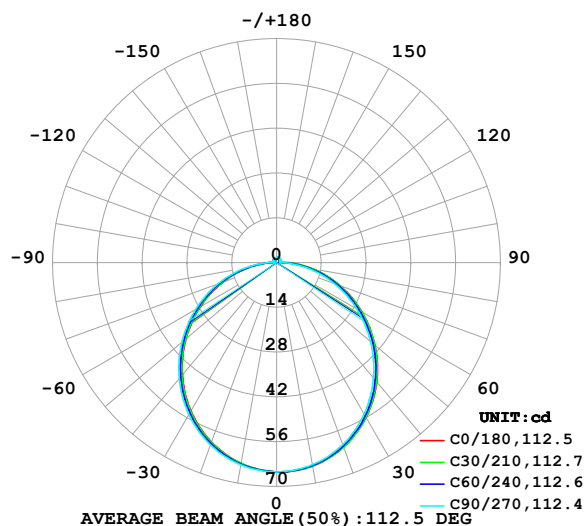


LUMINAIRE PHOTOMETRIC TEST REPORT

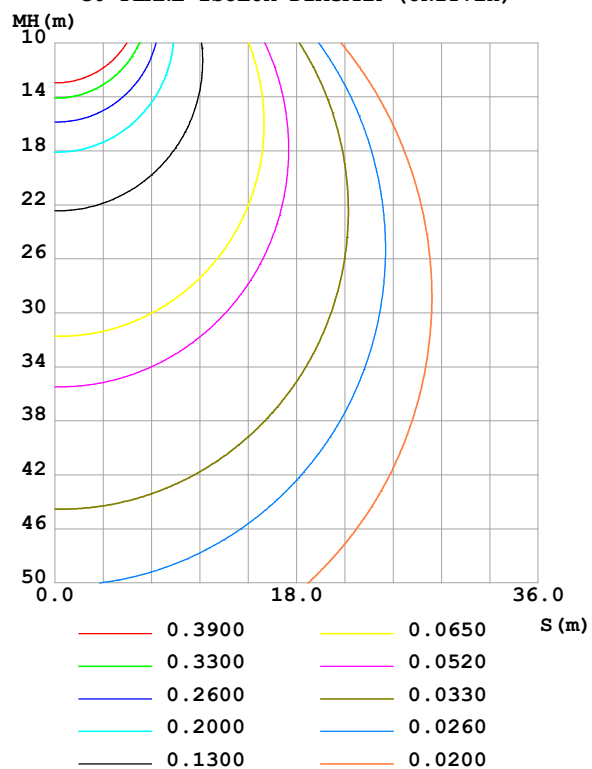
Test:U:24.00V I:0.2358A P:5.659W PF:1.000 Freq:0Hz Lamp Flux:199.383x1 lm		
NAME: SF16-24v-5050-70-SPI-RGBW(2700K)-W	TYPE:	WEIGHT:
SPEC.:	DIM.: Length=1m	SERIAL No.:
MFR.: Olym pia lighting	SUR.:	Shielding Angle:

DATA OF LAMP		PHOTOMETRIC DATA Eff: 35.23 lm/W			
MODEL	5050	Imax (cd)	65.45	S/MH(C0/180)	1.22
NOMINAL POWER(W)		LOR(%)	100.0	S/MH(C90/270)	1.25
RATED VOLTAGE(V)	24	TOTAL FLUX(lm)	199.38	η UP,DN(C0-180)	2.0,48.3
NOMINAL FLUX(lm)	199.383	CIE CLASS	DIRECT	η UP,DN(C180-360)	1.9,47.9
LAMPS INSIDE	1	η up (%)	3.8	CIBSE SHR NOM	1.25
TEST VOLTAGE(V)		η down (%)	96.2	CIBSE SHR MAX	1.35

LUMINOUS INTENSITY DISTRIBUTION DIAGRAM



C0 PLANE ISOLUX DIAGRAM (UNIT:lx)



C Range: 0 - 360DEG
C Interval: 30.0DEG
Test Speed: HIGH
Temperature:25.3℃
Operators:
Test Date:2025-03-12

γ Range: 0 - 180DEG
 γ Interval: 1.0DEG
Test System:EVERFINE GO-2000B_V1 SYSTEM V2.00.488
Humidity:65.0%
Test Distance:6.360m [K=1.0000]
Remarks:

ZONAL FLUX DIAGRAM

ZONAL FLUX DIAGRAM:

γ	C0	C45	C90	C135	C180	C225	C270	C315	γ	Φ zone	Φ total	%lum,lamp
10	64.59	64.50	64.17	63.81	63.73	63.86	64.22	64.56	0- 10	6.185	6.185	3.1,3.1
20	61.33	61.15	60.53	59.87	59.68	59.98	60.60	61.26	10- 20	17.68	23.86	12,12
30	55.95	55.62	54.70	53.83	53.58	54.02	54.89	55.78	20- 30	26.69	50.55	25.4,25.4
40	48.72	48.29	47.12	46.09	45.84	46.37	47.39	48.51	30- 40	32.05	82.60	41.4,41.4
50	40.15	39.67	38.33	37.19	36.96	37.54	38.66	39.93	40- 50	33.21	115.8	58.1,58.1
60	30.77	30.29	28.89	27.68	27.49	28.08	29.23	30.55	50- 60	30.31	146.1	73.3,73.3
70	21.11	20.63	19.22	18.02	17.85	18.43	19.55	20.87	60- 70	24.06	170.2	85.4,85.4
80	11.53	11.02	9.660	8.539	8.415	8.937	9.970	11.27	70- 80	15.49	185.7	93.1,93.1
90	3.312	2.462	1.019	1.560	1.837	1.605	1.073	2.727	80- 90	6.055	191.7	96.2,96.2
100	0.8769	0.8775	1.071	1.049	0.8280	0.9829	1.068	0.9611	90-100	1.256	193.0	96.8,96.8
110	0.9777	1.016	1.158	1.144	0.9346	1.080	1.155	1.039	100-110	1.072	194.1	97.3,97.3
120	1.096	1.165	1.253	1.244	1.047	1.172	1.210	1.104	110-120	1.106	195.2	97.9,97.9
130	1.203	1.286	1.343	1.327	1.165	1.256	1.265	1.183	120-130	1.086	196.3	98.4,98.4
140	1.306	1.361	1.418	1.403	1.281	1.332	1.323	1.235	130-140	1.001	197.3	98.9,98.9
150	1.399	1.443	1.510	1.476	1.388	1.417	1.421	1.322	140-150	0.8622	198.1	99.4,99.4
160	1.497	1.515	1.571	1.547	1.491	1.500	1.493	1.429	150-160	0.6751	198.8	99.7,99.7
170	1.566	1.586	1.614	1.600	1.575	1.578	1.571	1.554	160-170	0.4361	199.2	99.9,99.9
180	1.604	1.621	1.632	1.622	1.607	1.621	1.632	1.620	170-180	0.1525	199.4	100,100
DEG	LUMINOUS INTENSITY:cd									UNIT:lm		

Conical surface Flux(90deg): 99.328 lm

%lum = 49.8%

%lamp = 49.8%

Conical surface Flux(130deg): 159.11 lm

%lum = 79.8%

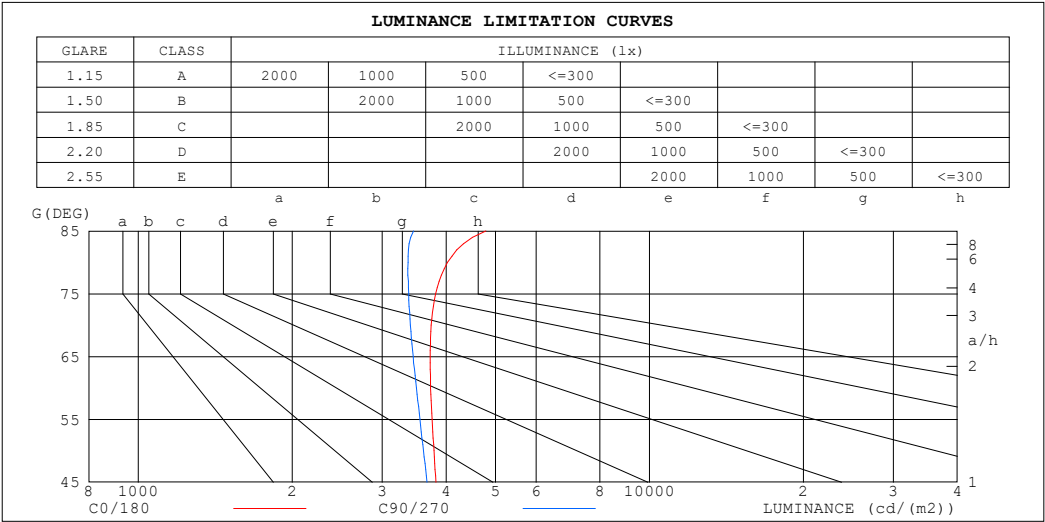
%lamp = 79.8%

C Range: 0 - 360DEG
 C Interval: 30.0DEG
 Test Speed: HIGH
 Temperature:25.3℃
 Operators:
 Test Date:2025-03-12

γ Range: 0 - 180DEG
 γ Interval: 1.0DEG
 Test System:EVERFINE GO-2000B_V1 SYSTEM V2.00.488
 Humidity:65.0%
 Test Distance:6.360m [K=1.0000]
 Remarks:

LUMINANCE LIMITATION CURVES

Test:U:24.00V I:0.2358A P:5.659W PF:1.000 Freq:0Hz Lamp Flux:199.383x1 lm		
NAME: SF16-24v-5050-70-SPI-RGBW(2700K)-W	TYPE:	WEIGHT:
SPEC.:	DIM.: Length=1m	SERIAL No.:
MFR.: OLympia lighting	SUR.:	Shielding Angle:



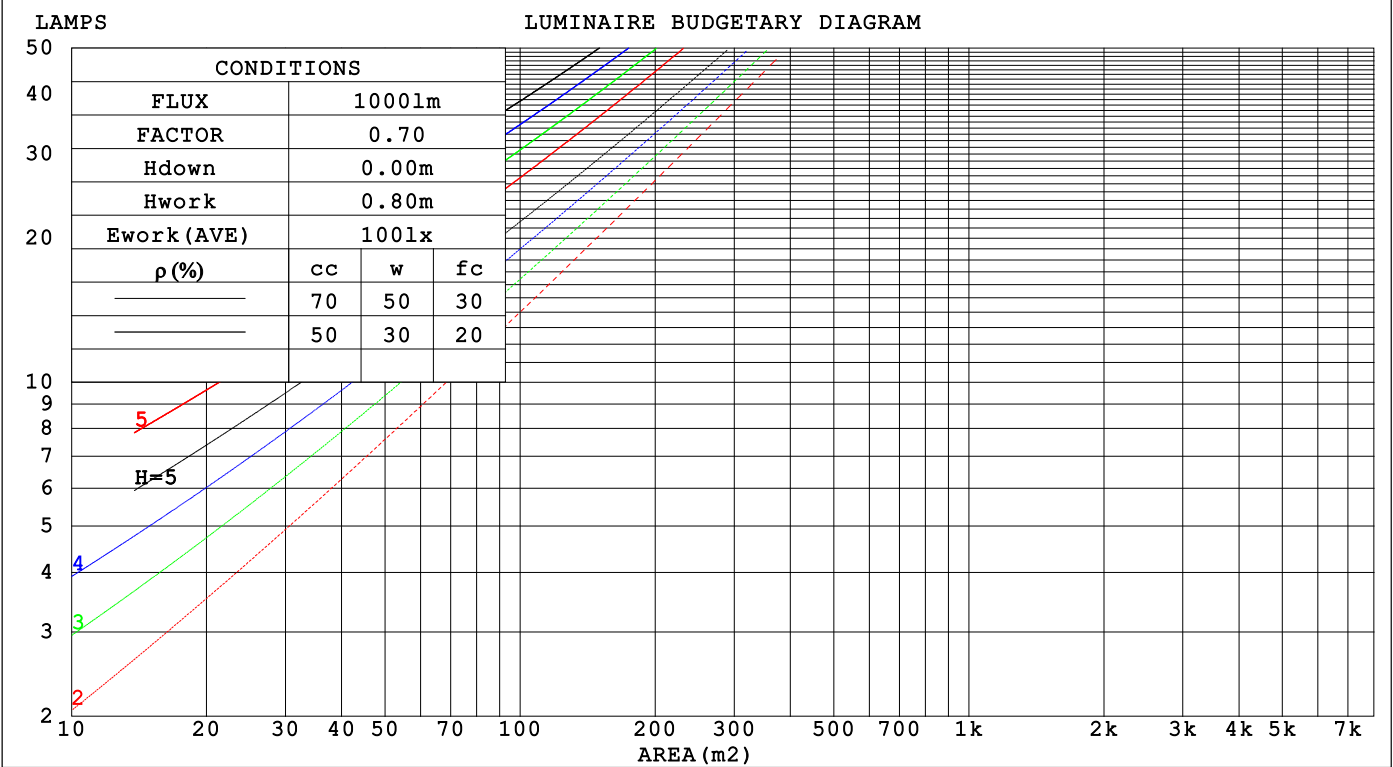
LUMINANCE cd/(m2)		
G (DEG)	C0/180	C90/270
85	4788	3454
80	4027	3370
75	3818	3380
70	3742	3405
65	3725	3449
60	3732	3499
55	3756	3554
50	3788	3612
45	3822	3670

C Range: 0 - 360DEG	γ Range: 0 - 180DEG
C Interval: 30.0DEG	γ Interval: 1.0DEG
Test Speed: HIGH	Test System:EVERFINE GO-2000B_V1 SYSTEM V2.00.488
Temperature:25.3℃	Humidity:65.0%
Operators:	Test Distance:6.360m [K=1.0000]
Test Date:2025-03-12	Remarks:

CU AND LUMINAIRE BUDGETARY ESTIMATE DIAGRAM

Test:U:24.00V I:0.2358A P:5.659W PF:1.000 Freq:0Hz		
Lamp Flux:199.383x1 lm		
NAME: SF16-24v-5050-70-SPI-RGBW(2700K)-W	TYPE:	WEIGHT:
SPEC.:	DIM.: Length=1m	SERIAL No.:
MFR.: OLYMPIA lighting	SUR.:	Shielding Angle:

pcc	80%			70%			50%			30%			10%			0
pw	50%	30%	10%	50%	30%	10%	50%	30%	10%	50%	30%	10%	50%	30%	10%	0
pfc	20%			20%			20%			20%			20%			0
RCR	RCR:Room Cavity Ratio			Coefficients of Utilization(CU)												
0.0	1.18	1.18	1.18	1.15	1.15	1.15	1.09	1.09	1.09	1.04	1.04	1.04	.99	.99	.99	.96
1.0	1.02	.98	.93	.99	.95	.92	.94	.91	.88	.90	.87	.85	.86	.83	.81	.79
2.0	.89	.81	.76	.86	.80	.74	.82	.77	.72	.78	.74	.70	.75	.71	.68	.65
3.0	.78	.69	.62	.76	.68	.62	.72	.66	.60	.69	.63	.59	.66	.61	.57	.55
4.0	.69	.60	.53	.67	.59	.52	.64	.57	.51	.61	.55	.50	.59	.53	.49	.46
5.0	.61	.52	.45	.60	.51	.45	.57	.50	.44	.55	.48	.43	.53	.47	.42	.40
6.0	.55	.46	.39	.54	.45	.39	.52	.44	.38	.50	.43	.38	.48	.42	.37	.35
7.0	.50	.41	.35	.49	.40	.35	.47	.39	.34	.45	.38	.33	.43	.38	.33	.31
8.0	.45	.37	.31	.45	.36	.31	.43	.36	.30	.41	.35	.30	.40	.34	.30	.28
9.0	.42	.33	.28	.41	.33	.28	.40	.32	.27	.38	.32	.27	.37	.31	.27	.25
10.0	.38	.30	.25	.38	.30	.25	.37	.30	.25	.35	.29	.24	.34	.28	.24	.22



C Range: 0 - 360DEG
C Interval: 30.0DEG
Test Speed: HIGH
Temperature:25.3℃
Operators:
Test Date:2025-03-12

γ Range: 0 - 180DEG
γ Interval: 1.0DEG
Test System:EVERFINE GO-2000B_V1 SYSTEM V2.00.488
Humidity:65.0%
Test Distance:6.360m [K=1.0000]
Remarks:

WEC AND CCEC

Test:U:24.00V I:0.2358A P:5.659W PF:1.000 Freq:0Hz Lamp Flux:199.383x1 lm		
NAME: SF16-24v-5050-70-SPI-RGBW(2700K)-W	TYPE:	WEIGHT:
SPEC.:	DIM.: Length=1m	SERIAL No.:
MFR.: OLYMPIA lighting	SUR.:	Shielding Angle:

pcc	80%			70%			50%			30%			10%			0														
pw	50%	30%	10%	50%	30%	10%	50%	30%	10%	50%	30%	10%	50%	30%	10%	0														
pfc	20%			20%			20%			20%			20%			0														
RCR	RCR:Room Cavity Ratio															Wall Exitance Coefficients(WEC)														
0.0																														
1.0	.326	.185	.059	.318	.181	.058	.302	.173	.055	.288	.166	.053	.275	.159	.051															
2.0	.301	.165	.051	.293	.162	.050	.280	.155	.048	.267	.150	.047	.255	.144	.045															
3.0	.276	.147	.044	.269	.144	.043	.257	.139	.042	.245	.134	.041	.235	.130	.040															
4.0	.253	.131	.039	.247	.129	.038	.236	.125	.037	.226	.121	.037	.216	.118	.036															
5.0	.233	.119	.034	.228	.117	.034	.218	.113	.033	.209	.110	.033	.200	.107	.032															
6.0	.215	.108	.031	.211	.106	.031	.202	.103	.030	.194	.101	.030	.186	.098	.029															
7.0	.200	.099	.028	.196	.098	.028	.188	.095	.027	.180	.092	.027	.173	.090	.026															
8.0	.186	.091	.026	.183	.090	.025	.175	.088	.025	.169	.085	.025	.162	.083	.024															
9.0	.174	.084	.024	.171	.083	.023	.165	.081	.023	.158	.079	.023	.153	.078	.022															
10.0	.164	.079	.022	.161	.078	.022	.155	.076	.021	.149	.074	.021	.144	.072	.021															

pcc	80%			70%			50%			30%			10%			0
pw	50%	30%	10%	50%	30%	10%	50%	30%	10%	50%	30%	10%	50%	30%	10%	0
pfc	20%			20%			20%			20%			20%			0
RCR	RCR:Room Cavity Ratio						Ceiling Cavity Exitance Coefficients (CCEC)									
0.0	.220	.220	.220	.188	.188	.188	.128	.128	.128	.074	.074	.074	.024	.024	.024	
1.0	.211	.185	.163	.180	.159	.140	.123	.110	.097	.071	.063	.056	.023	.020	.018	
2.0	.203	.162	.127	.174	.139	.109	.119	.096	.076	.069	.056	.045	.022	.018	.015	
3.0	.195	.144	.103	.168	.124	.090	.115	.086	.063	.066	.050	.037	.021	.016	.012	
4.0	.188	.131	.088	.161	.113	.076	.111	.079	.054	.064	.046	.032	.021	.015	.010	
5.0	.180	.121	.077	.155	.104	.067	.107	.073	.047	.062	.043	.028	.020	.014	.009	
6.0	.173	.112	.069	.149	.097	.060	.103	.068	.043	.059	.040	.025	.019	.013	.008	
7.0	.166	.106	.063	.143	.092	.055	.099	.064	.039	.057	.038	.023	.019	.012	.008	
8.0	.160	.100	.059	.137	.087	.051	.095	.061	.036	.055	.036	.022	.018	.012	.007	
9.0	.153	.095	.055	.132	.082	.048	.092	.058	.034	.053	.034	.020	.017	.011	.007	
10.0	.148	.091	.053	.127	.079	.046	.088	.055	.033	.052	.033	.020	.017	.011	.006	

C Range: 0 - 360DEG
C Interval: 30.0DEG
Test Speed: HIGH
Temperature:25.3℃
Operators:
Test Date:2025-03-12

γ Range: 0 - 180DEG
γ Interval: 1.0DEG
Test System:EVERFINE GO-2000B_V1 SYSTEM V2.00.488
Humidity:65.0%
Test Distance:6.360m [K=1.0000]
Remarks:

UGR(Unified Glare Rating) Table

Test:U:24.00V I:0.2358A P:5.659W PF:1.000 Freq:0Hz Lamp Flux:199.383x1 lm											
NAME: SF16-24v-5050-70-SPI-RGBW(2700K)-W						TYPE:		WEIGHT:			
SPEC.:						DIM.: Length=1m		SERIAL No.:			
MFR.: OLympia lighting						SUR.:		Shielding Angle:			
ceiling/cavity	0.7	0.7	0.5	0.5	0.3	0.7	0.7	0.5	0.5	0.3	
walls	0.5	0.3	0.5	0.3	0.3	0.5	0.3	0.5	0.3	0.3	
working plane	0.2	0.2	0.2	0.2	0.2	0.2	0.2	0.2	0.2	0.2	
Room dimensions		Viewed crosswise					Viewed endwise				
x = 2H y = 2H	2H	22.9	24.4	23.2	24.6	24.9	22.6	24.1	22.9	24.4	24.7
	3H	24.6	26.0	25.0	26.3	26.6	24.3	25.7	24.6	26.0	26.3
	4H	25.5	26.8	25.8	27.1	27.4	25.0	26.3	25.4	26.7	27.0
	6H	26.2	27.4	26.6	27.7	28.1	25.6	26.9	26.0	27.2	27.6
	8H	26.5	27.7	26.9	28.0	28.4	25.9	27.1	26.3	27.4	27.8
	12H	26.8	27.9	27.2	28.3	28.6	26.1	27.2	26.5	27.6	27.9
4H	2H	23.5	24.8	23.9	25.1	25.5	23.3	24.6	23.7	25.0	25.3
	3H	25.5	26.6	25.9	27.0	27.4	25.2	26.3	25.6	26.7	27.1
	4H	26.4	27.5	26.9	27.9	28.3	26.1	27.1	26.5	27.5	27.9
	6H	27.3	28.3	27.8	28.7	29.1	26.8	27.8	27.3	28.2	28.6
	8H	27.7	28.6	28.2	29.0	29.5	27.1	28.0	27.6	28.5	28.9
	12H	28.1	28.9	28.6	29.3	29.8	27.4	28.2	27.9	28.6	29.1
8H	4H	26.8	27.7	27.3	28.1	28.6	26.5	27.3	26.9	27.8	28.2
	6H	27.9	28.6	28.4	29.1	29.6	27.4	28.2	27.9	28.6	29.1
	8H	28.4	29.0	28.9	29.5	30.1	27.9	28.5	28.4	29.0	29.5
	12H	28.9	29.4	29.4	30.0	30.5	28.2	28.8	28.8	29.3	29.9
12H	4H	26.8	27.6	27.3	28.1	28.6	26.5	27.3	27.0	27.8	28.3
	6H	28.0	28.6	28.5	29.1	29.6	27.6	28.2	28.1	28.7	29.2
	8H	28.6	29.1	29.1	29.6	30.2	28.1	28.6	28.6	29.1	29.7
Variations with the observer position at spacings(CIE Pub.117):											
S = 1.0H		+ 0.1 / - 0.2					+ 0.1 / - 0.2				
1.5H		+ 0.2 / - 0.3					+ 0.2 / - 0.3				
2.0H		+ 0.1 / - 0.3					+ 0.1 / - 0.3				

CIE Pub.117, 199.4 lm Total Lamp Luminous Flux Correct (8log(F/F0) = -5.6)
Area: 0.0165 m2

C Range: 0 - 360DEG
C Interval: 30.0DEG
Test Speed: HIGH
Temperature:25.3℃
Operators:
Test Date:2025-03-12

γ Range: 0 - 180DEG
γ Interval: 1.0DEG
Test System:EVERFINE GO-2000B_V1 SYSTEM V2.00.488
Humidity:65.0%
Test Distance:6.360m [K=1.0000]
Remarks:

UTILIZATION FACTORS TABLE

Test:U:24.00V I:0.2358A P:5.659W PF:1.000 Freq:0Hz Lamp Flux:199.383x1 lm		
NAME: SF16-24v-5050-70-SPI-RGBW(2700K)-W	TYPE:	WEIGHT:
SPEC.:	DIM.: Length=1m	SERIAL No.:
MFR.: OLympia lighting	SUR.:	Shielding Angle:

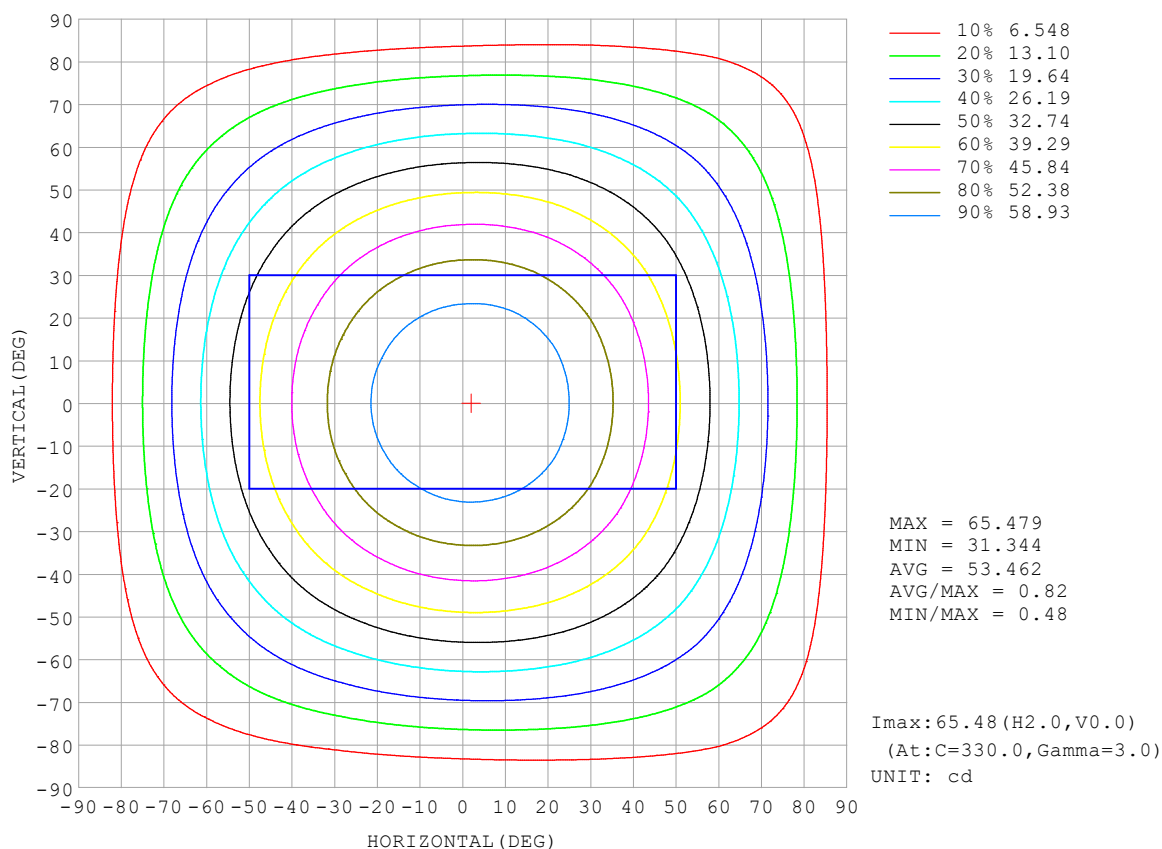
REFLECTANCE										
Ceiling	0.8	0.8	0.8	0.7	0.7	0.7	0.5	0.5	0.5	0
Walls	0.7	0.5	0.3	0.7	0.5	0.3	0.7	0.5	0.3	0
Working plane	0.2	0.2	0.2	0.2	0.2	0.2	0.2	0.2	0.2	0
ROOM INDEX	UTILIZATION FACTORS (PERCENT) $k(RI) \times RCR = 5$									
$k = 0.60$	56	44	37	55	44	37	53	43	37	30
0.80	66	54	46	64	53	46	62	52	45	38
1.00	74	62	55	72	62	54	70	63	54	46
1.25	81	70	62	79	69	62	76	67	61	53
1.50	86	75	68	84	74	68	80	72	66	58
2.00	93	84	77	91	82	76	87	80	74	65
2.50	97	89	82	94	87	81	90	84	79	69
3.00	100	93	87	98	91	86	93	88	83	73
4.00	104	98	93	102	96	92	97	92	88	78
5.00	107	102	97	104	99	95	99	95	92	81
ROOM INDEX	UF (total)									Direct
According to DIN EN 13032-2 2004			Suspended					SHRNOM = 1.25		

C Range: 0 - 360DEG
 C Interval: 30.0DEG
 Test Speed: HIGH
 Temperature: 25.3 °C
 Operators:
 Test Date: 2025-03-12

γ Range: 0 - 180DEG
 γ Interval: 1.0DEG
 Test System: EVERFINE GO-2000B_V1 SYSTEM V2.00.488
 Humidity: 65.0%
 Test Distance: 6.360m [K=1.0000]
 Remarks:

ISOCANDELA DIAGRAM

Test:U:24.00V I:0.2358A P:5.659W PF:1.000 Freq:0Hz Lamp Flux:199.383x1 lm		
NAME: SF16-24v-5050-70-SPI-RGBW(2700K)-W	TYPE:	WEIGHT:
SPEC.:	DIM.: Length=1m	SERIAL No.:
MFR.: OLympia lighting	SUR.:	Shielding Angle:

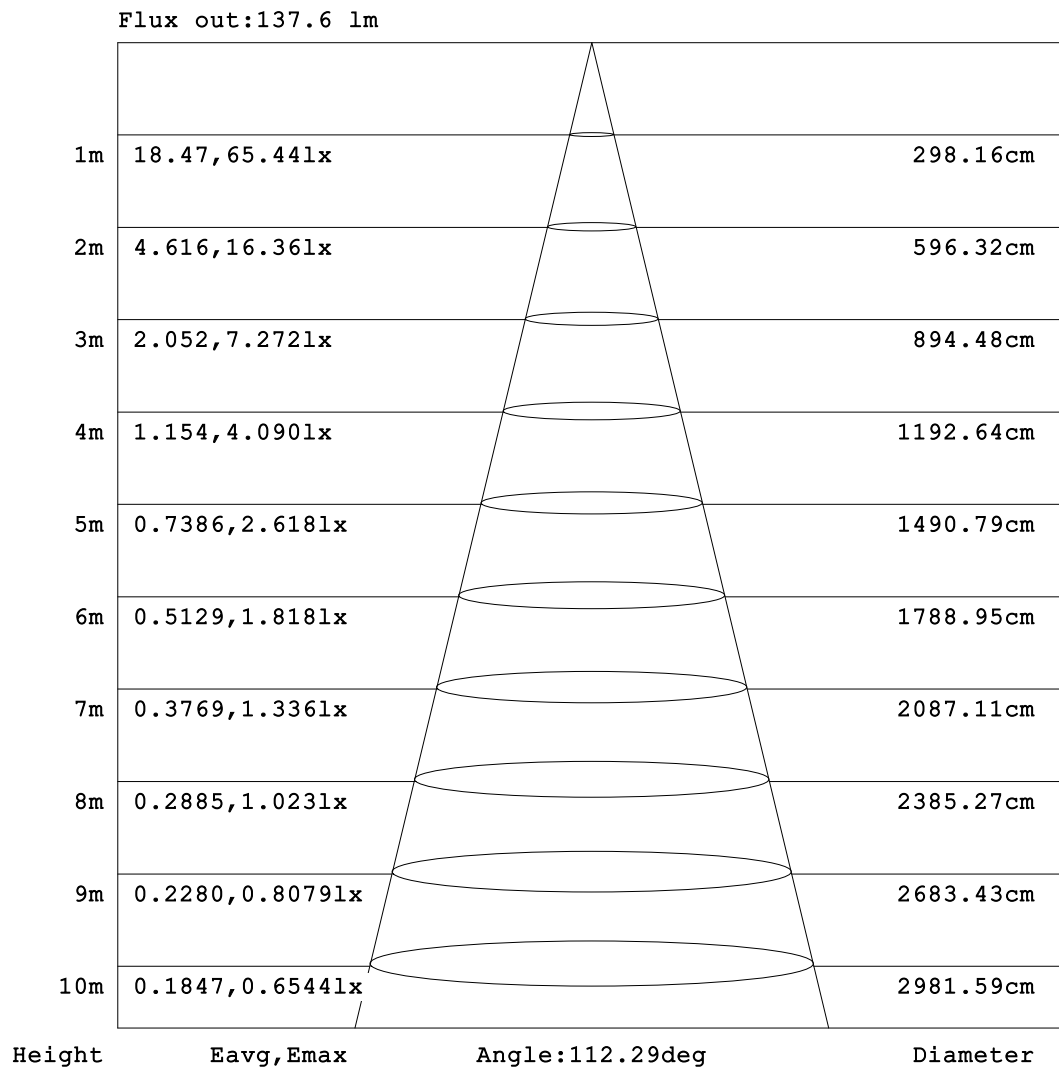


C Range: 0 - 360DEG
C Interval: 30.0DEG
Test Speed: HIGH
Temperature: 25.3°C
Operators:
Test Date: 2025-03-12

γ Range: 0 - 180DEG
γ Interval: 1.0DEG
Test System: EVERFINE GO-2000B_V1 SYSTEM V2.00.488
Humidity: 65.0%
Test Distance: 6.360m [K=1.0000]
Remarks:

AAI Figure

Test:U:24.00V I:0.2358A P:5.659W PF:1.000 Freq:0Hz Lamp Flux:199.383x1 lm		
NAME: SF16-24v-5050-70-SPI-RGBW(2700K)-W	TYPE:	WEIGHT:
SPEC.:	DIM.: Length=1m	SERIAL No.:
MFR.: OLympia lighting	SUR.:	Shielding Angle:



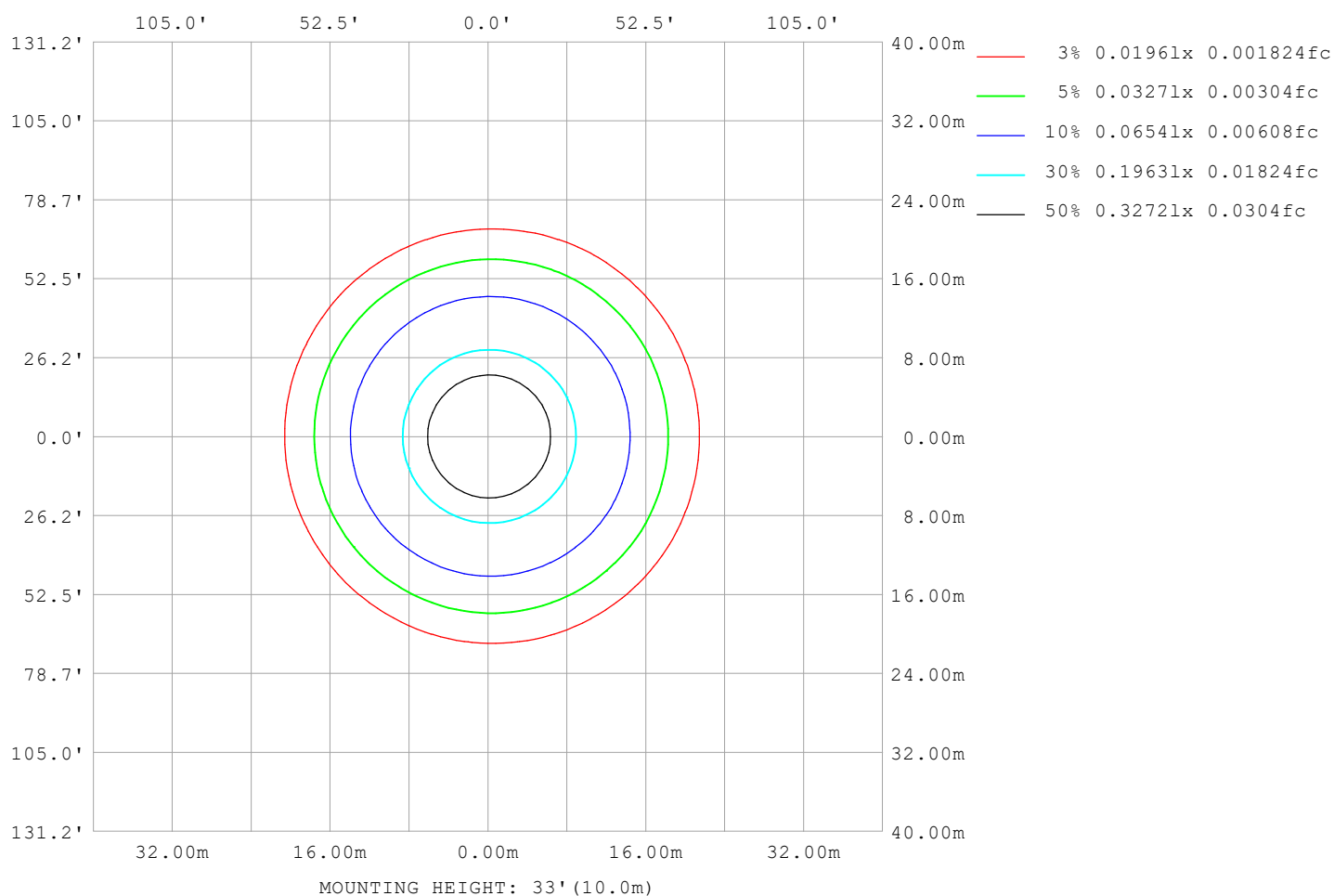
Note:The Curves indicate the illuminated area and the average illumination when the luminaire is at different distance.

C Range: 0 - 360DEG
C Interval: 30.0DEG
Test Speed: HIGH
Temperature:25.3℃
Operators:
Test Date:2025-03-12

γ Range: 0 - 180DEG
γ Interval: 1.0DEG
Test System:EVERFINE GO-2000B_V1 SYSTEM V2.00.488
Humidity:65.0%
Test Distance:6.360m [K=1.0000]
Remarks:

ISOLUX DIAGRAM

Test:U:24.00V I:0.2358A P:5.659W PF:1.000 Freq:0Hz Lamp Flux:199.383x1 lm		
NAME: SF16-24v-5050-70-SPI-RGBW(2700K)-W	TYPE:	WEIGHT:
SPEC.:	DIM.: Length=1m	SERIAL No.:
MFR.: OLympia lighting	SUR.:	Shielding Angle:



C Range: 0 - 360DEG
C Interval: 30.0DEG
Test Speed: HIGH
Temperature: 25.3°C
Operators:
Test Date: 2025-03-12

γ Range: 0 - 180DEG
γ Interval: 1.0DEG
Test System: EVERFINE GO-2000B_V1 SYSTEM V2.00.488
Humidity: 65.0%
Test Distance: 6.360m [K=1.0000]
Remarks:

LED Avg.L Report

Test:U:24.00V I:0.2358A P:5.659W PF:1.000 Freq:0Hz Lamp Flux:199.383x1 lm		
NAME: SF16-24v-5050-70-SPI-RGBW(2700K)-W	TYPE:	WEIGHT:
SPEC.:	DIM.: Length=1m	SERIAL No.:
MFR.: OLympia lighting	SUR.:	Shielding Angle:

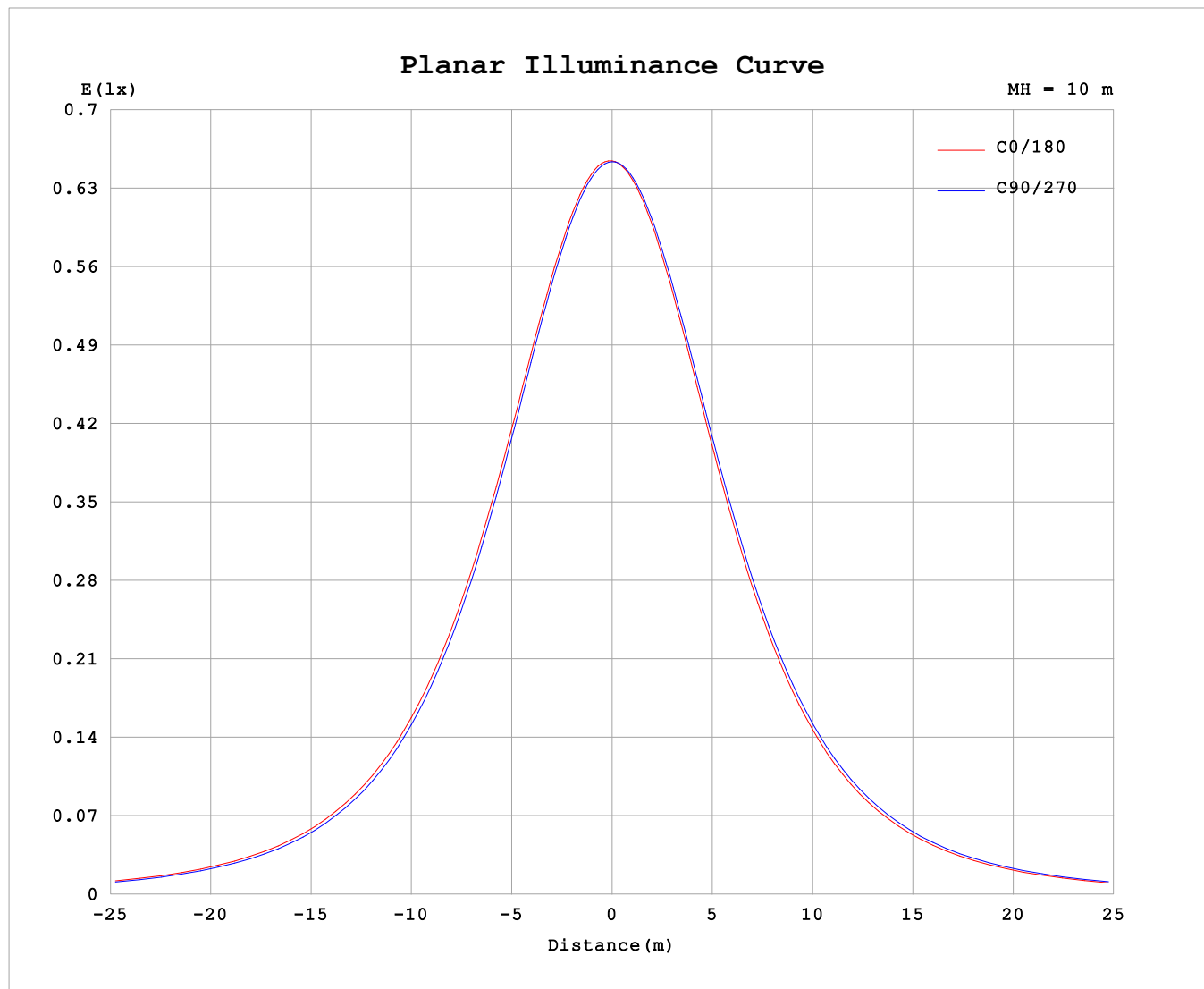
AvgL	cd/m2
L_0~180 (65) av	3487
L_0~180 (75) av	3441
L_0~180 (85) av	3892
L_90~270 (65) av	3475
L_90~270 (75) av	3416
L_90~270 (85) av	3559
L_45 (65) av	3489
L_45 (75) av	3441
L_45 (85) av	3738

Standard: GB/T 29293-2012

C Range: 0 - 360DEG
C Interval: 30.0DEG
Test Speed: HIGH
Temperature:25.3℃
Operators:
Test Date:2025-03-12

γ Range: 0 - 180DEG
γ Interval: 1.0DEG
Test System:EVERFINE GO-2000B_V1 SYSTEM V2.00.488
Humidity:65.0%
Test Distance:6.360m [K=1.0000]
Remarks:

Planar Illuminance Curve



C Range: 0 - 360DEG
C Interval: 30.0DEG
Test Speed: HIGH
Temperature: 25.3 °C
Operators:
Test Date: 2025-03-12

γ Range: 0 - 180DEG
 γ Interval: 1.0DEG
Test System: EVERFINE GO-2000B_V1 SYSTEM V2.00.488
Humidity: 65.0%
Test Distance: 6.360m [K=1.0000]
Remarks:

LUMINOUS DISTRIBUTION INTENSITY DATA

Test:U:24.00V I:0.2358A P:5.659W PF:1.000 Freq:0Hz Lamp Flux:199.383x1 lm		
NAME: SF16-24v-5050-70-SPI-RGBW(2700K)-W	TYPE:	WEIGHT:
SPEC.:	DIM.: Length=1m	SERIAL No.:
MFR.: OLympia lighting	SUR.:	Shielding Angle:

Table--1

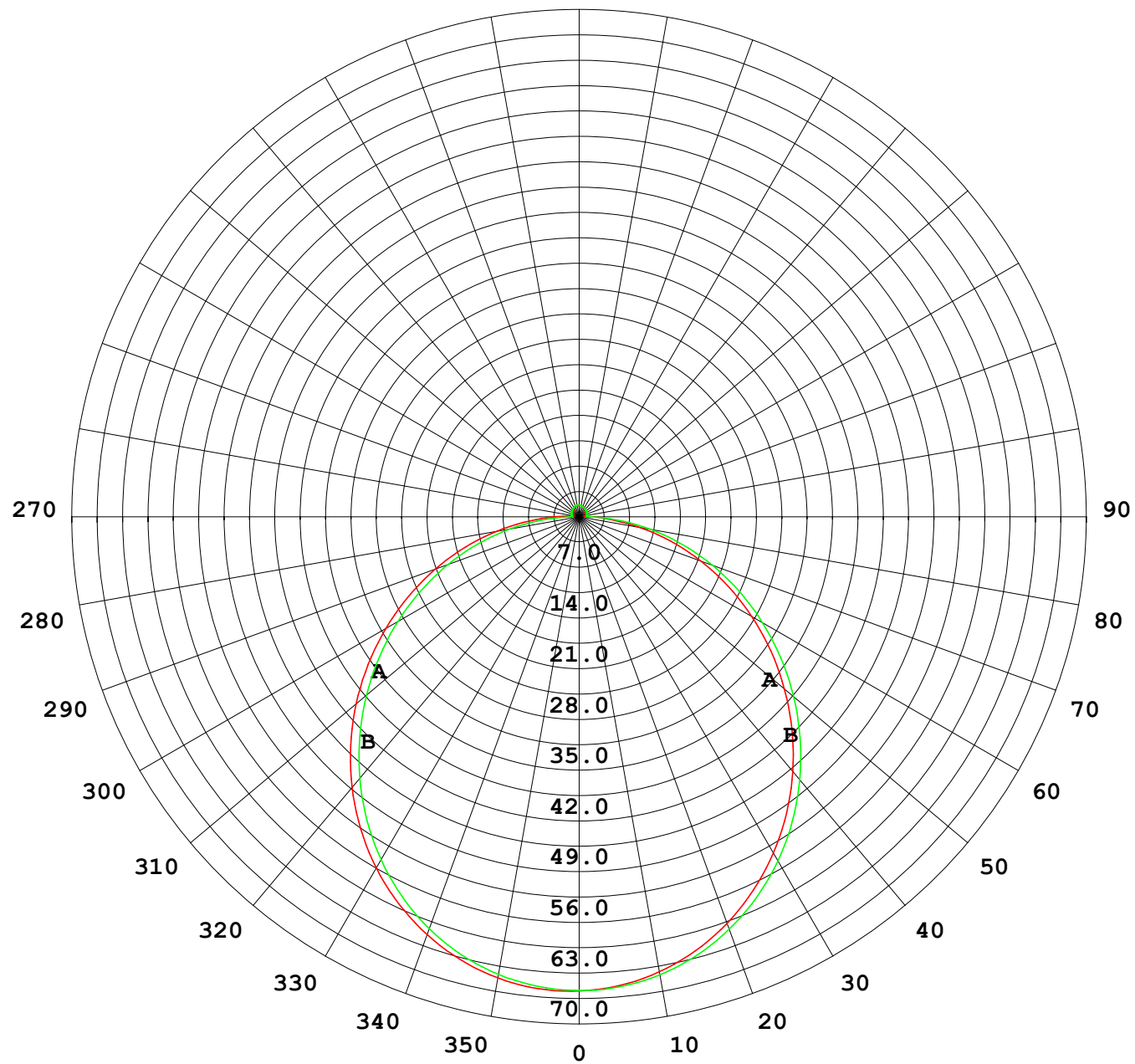
UNIT: cd

C (DEG) γ (DEG)	0	30	60	90	120	150	180	210	240	270	300	330							
0	65.4	65.4	65.4	65.4	65.4	65.4	65.4	65.4	65.4	65.4	65.4	65.4							
5	65.3	65.3	65.2	65.1	65.0	64.9	64.9	64.9	65.0	65.1	65.2	65.4							
10	64.6	64.6	64.4	64.2	63.9	63.7	63.7	63.7	64.0	64.2	64.5	64.7							
15	63.2	63.3	63.0	62.6	62.2	62.0	62.0	62.0	62.4	62.7	63.1	63.3							
20	61.3	61.3	61.0	60.5	60.0	59.7	59.7	59.8	60.2	60.6	61.1	61.4							
25	58.9	58.8	58.4	57.9	57.3	56.9	56.8	57.0	57.5	58.0	58.6	58.9							
30	56.0	55.9	55.4	54.7	54.0	53.6	53.6	53.8	54.3	54.9	55.6	56.0							
35	52.5	52.4	51.9	51.1	50.4	49.9	49.9	50.1	50.7	51.3	52.1	52.6							
40	48.7	48.6	48.0	47.1	46.3	45.9	45.8	46.1	46.7	47.4	48.3	48.8							
45	44.6	44.5	43.8	42.8	42.0	41.5	41.5	41.7	42.4	43.1	44.1	44.6							
50	40.2	40.0	39.3	38.3	37.4	36.9	37.0	37.2	37.9	38.7	39.6	40.2							
55	35.5	35.4	34.7	33.7	32.7	32.2	32.3	32.5	33.2	34.0	35.0	35.6							
60	30.8	30.7	29.9	28.9	27.9	27.4	27.5	27.7	28.4	29.2	30.3	30.8							
65	26.0	25.9	25.1	24.1	23.1	22.6	22.7	22.9	23.6	24.4	25.4	26.0							
70	21.1	21.0	20.2	19.2	18.3	17.8	17.9	18.1	18.8	19.6	20.6	21.2							
75	16.3	16.2	15.4	14.4	13.5	13.0	13.1	13.3	14.0	14.7	15.7	16.4							
80	11.5	11.4	10.6	9.66	8.74	8.33	8.42	8.63	9.24	9.97	11.0	11.6							
85	6.88	6.71	5.88	4.97	4.17	4.14	4.31	4.33	4.60	5.27	6.27	6.88							
90	3.31	2.97	1.95	1.02	1.39	1.73	1.84	1.75	1.46	1.07	2.27	3.18							
95	1.14	0.88	0.91	1.05	1.04	0.97	0.79	0.89	1.01	1.02	1.00	1.07							
100	0.88	0.80	0.95	1.07	1.08	1.02	0.83	0.90	1.07	1.07	1.03	0.89							
105	0.92	0.87	1.03	1.11	1.13	1.06	0.88	0.95	1.11	1.12	1.07	0.91							
110	0.98	0.93	1.10	1.16	1.17	1.12	0.93	0.99	1.17	1.16	1.11	0.96							
115	1.04	1.00	1.16	1.21	1.23	1.17	0.99	1.05	1.20	1.19	1.14	1.01							
120	1.10	1.12	1.21	1.25	1.26	1.22	1.05	1.10	1.24	1.21	1.16	1.05							
125	1.15	1.21	1.26	1.30	1.30	1.27	1.10	1.15	1.29	1.24	1.19	1.10							
130	1.20	1.27	1.30	1.34	1.34	1.32	1.17	1.20	1.31	1.26	1.22	1.15							
135	1.25	1.31	1.34	1.37	1.38	1.35	1.22	1.24	1.34	1.29	1.26	1.14							
140	1.31	1.35	1.37	1.42	1.41	1.39	1.28	1.29	1.37	1.32	1.29	1.18							
145	1.35	1.39	1.41	1.46	1.45	1.43	1.34	1.34	1.41	1.36	1.33	1.22							
150	1.40	1.43	1.46	1.51	1.48	1.47	1.39	1.38	1.45	1.42	1.37	1.28							
155	1.44	1.47	1.49	1.54	1.51	1.52	1.45	1.43	1.49	1.46	1.43	1.33							
160	1.50	1.51	1.52	1.57	1.54	1.56	1.49	1.48	1.52	1.49	1.48	1.38							
165	1.54	1.55	1.56	1.60	1.56	1.59	1.54	1.52	1.56	1.53	1.52	1.43							
170	1.57	1.59	1.58	1.61	1.59	1.61	1.57	1.56	1.60	1.57	1.57	1.54							
175	1.59	1.62	1.61	1.63	1.61	1.62	1.60	1.59	1.63	1.60	1.61	1.59							
180	1.60	1.62	1.63	1.63	1.62	1.62	1.61	1.62	1.63	1.63	1.63	1.61							

C Range: 0 - 360DEG
C Interval: 30.0DEG
Test Speed: HIGH
Temperature:25.3℃
Operators:
Test Date:2025-03-12

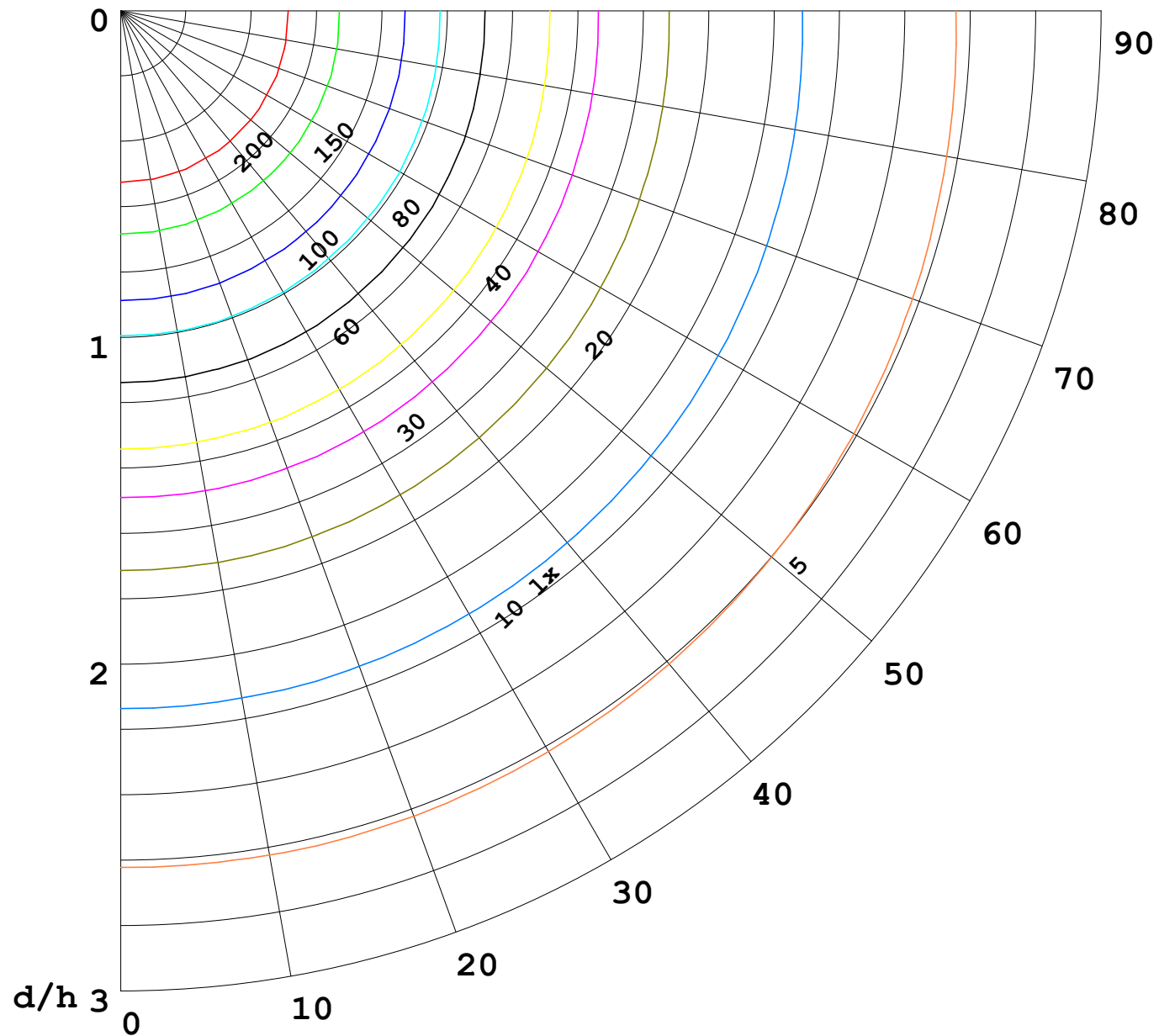
γ Range: 0 - 180DEG
γ Interval: 1.0DEG
Test System:EVERFINE GO-2000B_V1 SYSTEM V2.00.488
Humidity:65.0%
Test Distance:6.360m [K=1.0000]
Remarks:

I (cd)



1000 lm

$\kappa = 1$



F = 1000 lm
 K = 0.7
 Hcc = 0.8 m
 Hfc = 0.0 m
 Eave = 100 lx

	Pcc	Pw	Pfc
—————	70	50	30
—————	50	30	20

