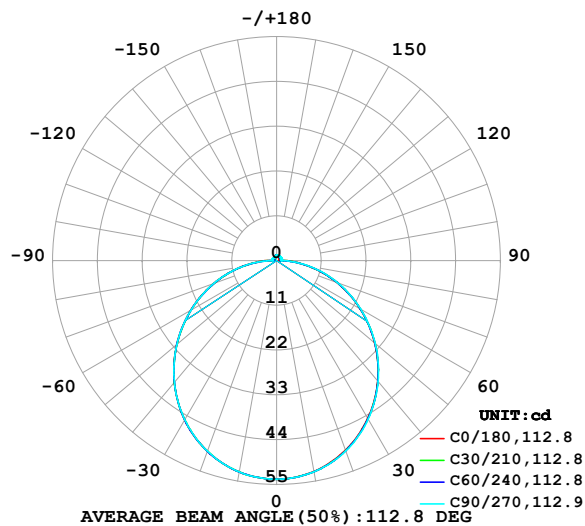


LUMINAIRE PHOTOMETRIC TEST REPORT

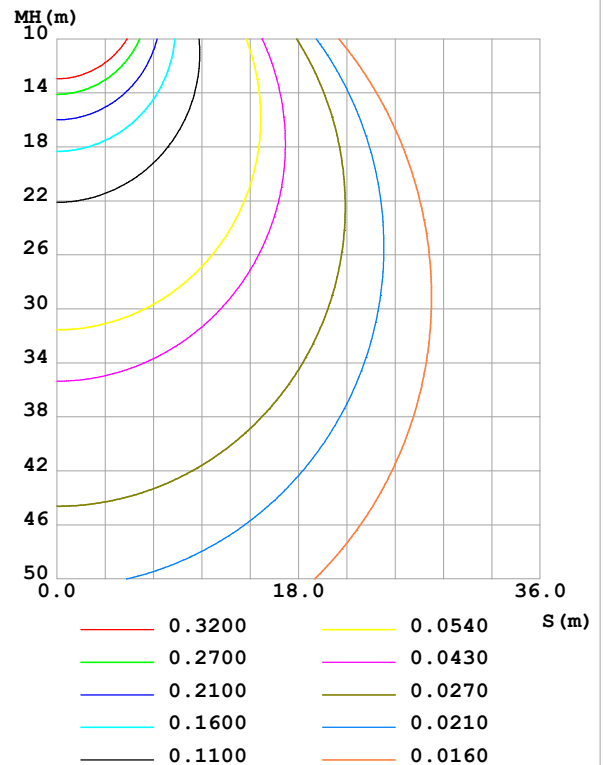
| | | |
|--|-----------------|------------------|
| Test:U:24.00V I:0.4760A P:11.42W PF:1.000 Freq:0Hz Lamp Flux:164.831x1 lm | | |
| NAME: SF16-24V-5050-70-SPI-RGBW(3000K)-G | TYPE: | WEIGHT: |
| SPEC.: | DIM.: Length=1m | SERIAL No.: |
| MFR.: OLympia lighting | SUR.: | Shielding Angle: |

| DATA OF LAMP | | PHOTOMETRIC DATA | | | | Eff: 14.43 lm/W |
|------------------|---------|------------------|--------|------------------------|----------|-----------------|
| MODEL | 5050 | Imax (cd) | 53.69 | S/MH(C0/180) | 1.25 | |
| NOMINAL POWER(W) | | LOR(%) | 100.0 | S/MH(C90/270) | 1.25 | |
| RATED VOLTAGE(V) | 24 | TOTAL FLUX(lm) | 164.83 | η UP,DN(C0-180) | 2.1,47.7 | |
| NOMINAL FLUX(lm) | 164.831 | CIE CLASS | DIRECT | η UP,DN(C180-360) | 1.9,48.3 | |
| LAMPS INSIDE | 1 | η up (%) | 4.0 | CIBSE SHR NOM | 1.25 | |
| TEST VOLTAGE(V) | | η down (%) | 96.0 | CIBSE SHR MAX | 1.35 | |

LUMINOUS INTENSITY DISTRIBUTION DIAGRAM



C0 PLANE ISOLUX DIAGRAM (UNIT:lx)



C Range: 0 - 360DEG
C Interval: 30.0DEG
Test Speed: HIGH
Temperature:25.3℃
Operators:
Test Date:2025-03-17

γ Range: 0 - 180DEG
 γ Interval: 1.0DEG
Test System:EVERFINE GO-2000B_V1 SYSTEM V2.00.488
Humidity:65.0%
Test Distance:6.360m [K=1.0000]
Remarks:

ZONAL FLUX DIAGRAM

ZONAL FLUX DIAGRAM:

| γ | C0 | C45 | C90 | C135 | C180 | C225 | C270 | C315 | γ | Φ zone | Φ total | %lum, lamp |
|----------|-----------------------|--------|-------|--------|--------|--------|-------|--------|----------|-------------|--------------|------------|
| 10 | 52.60 | 52.67 | 52.70 | 52.70 | 52.73 | 52.73 | 52.73 | 52.70 | 0- 10 | 5.078 | 5.078 | 3.08,3.08 |
| 20 | 49.55 | 49.67 | 49.73 | 49.78 | 49.83 | 49.83 | 49.81 | 49.76 | 10- 20 | 14.52 | 19.60 | 11.9,11.9 |
| 30 | 44.78 | 44.90 | 45.00 | 45.11 | 45.21 | 45.20 | 45.15 | 45.09 | 20- 30 | 21.94 | 41.53 | 25.2,25.2 |
| 40 | 38.65 | 38.71 | 38.79 | 38.98 | 39.12 | 39.11 | 39.09 | 38.99 | 30- 40 | 26.37 | 67.90 | 41.2,41.2 |
| 50 | 31.47 | 31.51 | 31.60 | 31.83 | 32.03 | 31.99 | 31.98 | 31.86 | 40- 50 | 27.36 | 95.26 | 57.8,57.8 |
| 60 | 23.71 | 23.76 | 23.87 | 24.08 | 24.33 | 24.26 | 24.30 | 24.13 | 50- 60 | 25.01 | 120.3 | 73,73 |
| 70 | 15.78 | 15.83 | 15.97 | 16.16 | 16.42 | 16.33 | 16.42 | 16.19 | 60- 70 | 19.90 | 140.2 | 85,85 |
| 80 | 7.953 | 7.997 | 8.177 | 8.339 | 8.593 | 8.489 | 8.614 | 8.323 | 70- 80 | 12.88 | 153.0 | 92.8,92.8 |
| 90 | 2.244 | 1.858 | 1.126 | 2.000 | 2.521 | 1.975 | 1.197 | 1.917 | 80- 90 | 5.197 | 158.2 | 96,96 |
| 100 | 0.7149 | 0.9539 | 1.222 | 0.9542 | 0.6314 | 0.7591 | 1.138 | 0.7608 | 90-100 | 1.167 | 159.4 | 96.7,96.7 |
| 110 | 0.7926 | 1.025 | 1.262 | 1.029 | 0.7323 | 0.8283 | 1.187 | 0.8127 | 100-110 | 0.9682 | 160.4 | 97.3,97.3 |
| 120 | 0.8964 | 1.087 | 1.262 | 1.089 | 0.8303 | 0.8817 | 1.135 | 0.8589 | 110-120 | 0.9669 | 161.3 | 97.9,97.9 |
| 130 | 0.9887 | 1.137 | 1.265 | 1.142 | 0.9340 | 0.9437 | 1.031 | 0.9167 | 120-130 | 0.9129 | 162.3 | 98.4,98.4 |
| 140 | 1.075 | 1.189 | 1.282 | 1.195 | 1.029 | 1.020 | 1.005 | 0.9615 | 130-140 | 0.8244 | 163.1 | 98.9,98.9 |
| 150 | 1.159 | 1.237 | 1.320 | 1.243 | 1.127 | 1.118 | 1.080 | 1.058 | 140-150 | 0.7083 | 163.8 | 99.4,99.4 |
| 160 | 1.237 | 1.279 | 1.328 | 1.283 | 1.220 | 1.219 | 1.190 | 1.182 | 150-160 | 0.5564 | 164.3 | 99.7,99.7 |
| 170 | 1.306 | 1.319 | 1.337 | 1.324 | 1.306 | 1.303 | 1.296 | 1.299 | 160-170 | 0.3611 | 164.7 | 99.9,99.9 |
| 180 | 1.335 | 1.341 | 1.351 | 1.343 | 1.332 | 1.339 | 1.348 | 1.343 | 170-180 | 0.1266 | 164.8 | 100,100 |
| DEG | LUMINOUS INTENSITY:cd | | | | | | | | | UNIT:lm | | |

Conical surface Flux(90deg): 81.672 lm

%lum = 49.5%

%lamp = 49.5%

Conical surface Flux(130deg): 130.99 lm

%lum = 79.5%

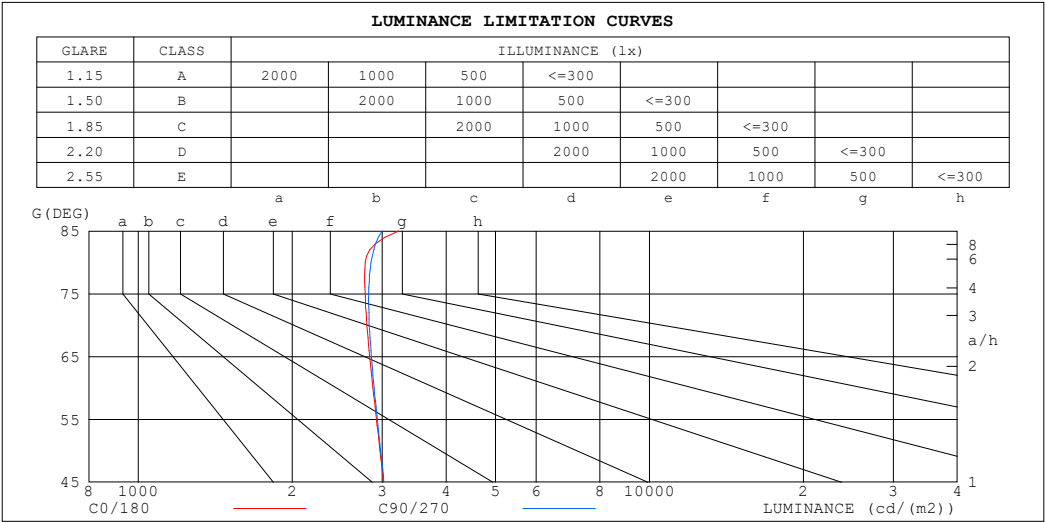
%lamp = 79.5%

C Range: 0 - 360DEG
 C Interval: 30.0DEG
 Test Speed: HIGH
 Temperature:25.3℃
 Operators:
 Test Date:2025-03-17

γ Range: 0 - 180DEG
 γ Interval: 1.0DEG
 Test System:EVERFINE GO-2000B_V1 SYSTEM V2.00.488
 Humidity:65.0%
 Test Distance:6.360m [K=1.0000]
 Remarks:

LUMINANCE LIMITATION CURVES

| | | |
|--|-----------------|------------------|
| Test:U:24.00V I:0.4760A P:11.42W PF:1.000 Freq:0Hz Lamp Flux:164.83lx1 lm | | |
| NAME: SF16-24V-5050-70-SPI-RGBW(3000K)-G | TYPE: | WEIGHT: |
| SPEC.: | DIM.: Length=1m | SERIAL No.: |
| MFR.: OLympia lighting | SUR.: | Shielding Angle: |



| LUMINANCE cd/(m2) | | |
|-------------------|--------|---------|
| G (DEG) | C0/180 | C90/270 |
| 85 | 3234 | 2999 |
| 80 | 2779 | 2852 |
| 75 | 2777 | 2824 |
| 70 | 2800 | 2828 |
| 65 | 2836 | 2857 |
| 60 | 2878 | 2892 |
| 55 | 2923 | 2933 |
| 50 | 2971 | 2978 |
| 45 | 3016 | 3023 |

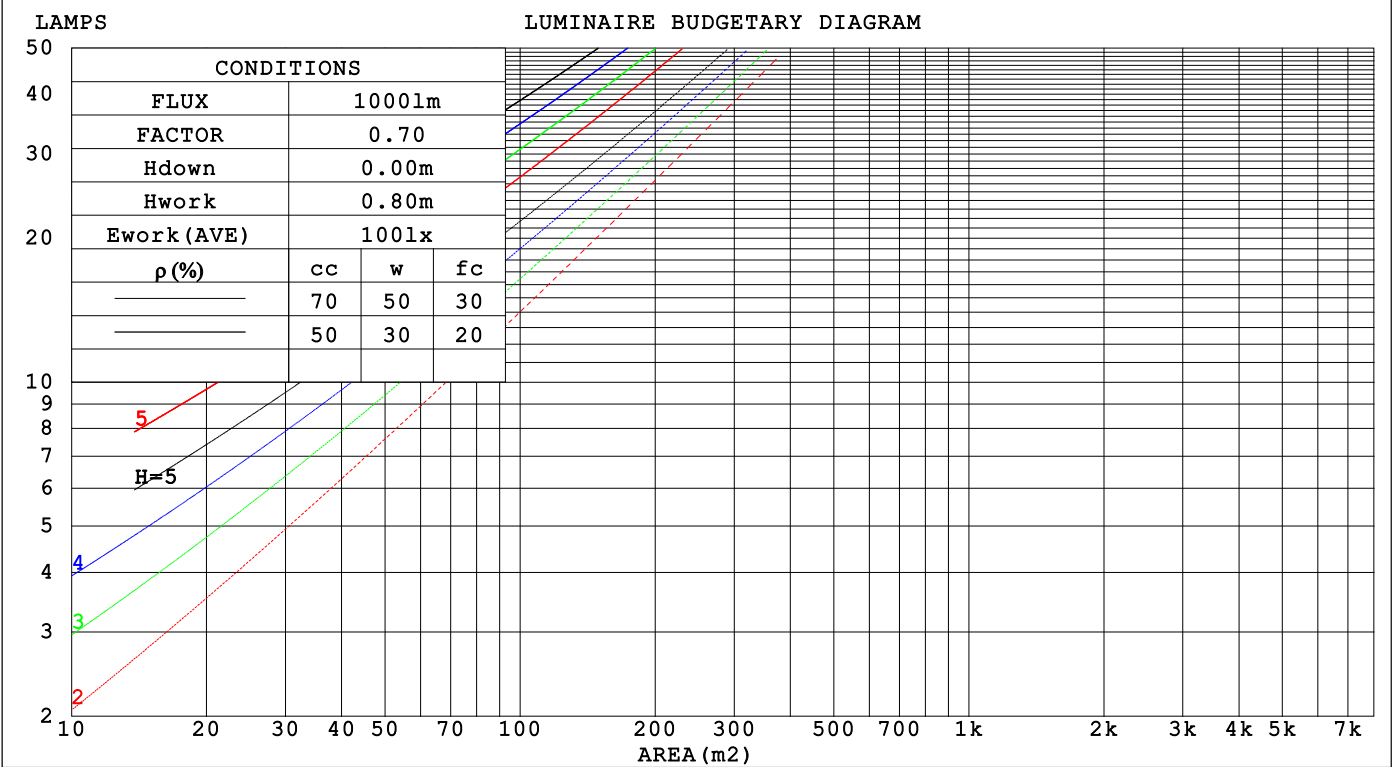
C Range: 0 - 360DEG
C Interval: 30.0DEG
Test Speed: HIGH
Temperature:25.3℃
Operators:
Test Date:2025-03-17

γ Range: 0 - 180DEG
γ Interval: 1.0DEG
Test System:EVERFINE GO-2000B_V1 SYSTEM V2.00.488
Humidity:65.0%
Test Distance:6.360m [K=1.0000]
Remarks:

CU AND LUMINAIRE BUDGETARY ESTIMATE DIAGRAM

| | | |
|--|-----------------|------------------|
| Test:U:24.00V I:0.4760A P:11.42W PF:1.000 Freq:0Hz | | |
| Lamp Flux:164.83lx1 lm | | |
| NAME: SF16-24V-5050-70-SPI-RGBW(3000K)-G | TYPE: | WEIGHT: |
| SPEC.: | DIM.: Length=1m | SERIAL No.: |
| MFR.: OLYMPIA lighting | SUR.: | Shielding Angle: |

| | | | | | | | | | | | | | | | | |
|-----------------|-----------------------|-----|-----|-----|-----|-----|-----|-----|-----|-----|-----|-----|-----|-----|-----|---|
| pcc | 80% | | | 70% | | | 50% | | | 30% | | | 10% | | | 0 |
| p _w | 50% | 30% | 10% | 50% | 30% | 10% | 50% | 30% | 10% | 50% | 30% | 10% | 50% | 30% | 10% | 0 |
| p _{fc} | 20% | | | 20% | | | 20% | | | 20% | | | 20% | | | 0 |
| RCR | RCR:Room Cavity Ratio | | | | | | | | | | | | | | | |



C Range: 0 - 360DEG
C Interval: 30.0DEG
Test Speed: HIGH
Temperature:25.3℃
Operators:
Test Date:2025-03-17

γ Range: 0 - 180DEG
γ Interval: 1.0DEG
Test System:EVERFINE GO-2000B_V1 SYSTEM V2.00.488
Humidity:65.0%
Test Distance:6.360m [K=1.0000]
Remarks:

WEC AND CCEC

| | | |
|--|-----------------|------------------|
| Test:U:24.00V I:0.4760A P:11.42W PF:1.000 Freq:0Hz Lamp Flux:164.83lx1 lm | | |
| NAME: SF16-24V-5050-70-SPI-RGBW(3000K)-G | TYPE: | WEIGHT: |
| SPEC.: | DIM.: Length=1m | SERIAL No.: |
| MFR.: OLympia lighting | SUR.: | Shielding Angle: |

| pcc | 80% | | | 70% | | | 50% | | | 30% | | | 10% | | | 0 | | | | | | | | | | | | | | |
|------|-----------------------|------|------|------|------|------|------|------|------|------|------|------|------|------|------|---------------------------------|--|--|--|--|--|--|--|--|--|--|--|--|--|--|
| pw | 50% | 30% | 10% | 50% | 30% | 10% | 50% | 30% | 10% | 50% | 30% | 10% | 50% | 30% | 10% | 0 | | | | | | | | | | | | | | |
| pfc | 20% | | | 20% | | | 20% | | | 20% | | | 20% | | | 0 | | | | | | | | | | | | | | |
| RCR | RCR:Room Cavity Ratio | | | | | | | | | | | | | | | Wall Exitance Coefficients(WEC) | | | | | | | | | | | | | | |
| 0.0 | | | | | | | | | | | | | | | | | | | | | | | | | | | | | | |
| 1.0 | .328 | .186 | .059 | .319 | .182 | .058 | .304 | .174 | .056 | .289 | .167 | .054 | .276 | .160 | .052 | | | | | | | | | | | | | | | |
| 2.0 | .302 | .165 | .051 | .294 | .162 | .050 | .280 | .156 | .048 | .268 | .150 | .047 | .256 | .145 | .046 | | | | | | | | | | | | | | | |
| 3.0 | .276 | .147 | .044 | .270 | .144 | .043 | .257 | .139 | .042 | .246 | .135 | .041 | .235 | .130 | .040 | | | | | | | | | | | | | | | |
| 4.0 | .253 | .132 | .039 | .247 | .129 | .038 | .236 | .125 | .037 | .226 | .121 | .037 | .216 | .118 | .036 | | | | | | | | | | | | | | | |
| 5.0 | .233 | .119 | .034 | .228 | .117 | .034 | .218 | .113 | .033 | .209 | .110 | .033 | .200 | .107 | .032 | | | | | | | | | | | | | | | |
| 6.0 | .215 | .108 | .031 | .211 | .106 | .031 | .202 | .103 | .030 | .194 | .101 | .030 | .186 | .098 | .029 | | | | | | | | | | | | | | | |
| 7.0 | .200 | .099 | .028 | .196 | .098 | .028 | .188 | .095 | .027 | .180 | .092 | .027 | .173 | .090 | .026 | | | | | | | | | | | | | | | |
| 8.0 | .187 | .091 | .026 | .183 | .090 | .025 | .176 | .088 | .025 | .169 | .085 | .025 | .162 | .083 | .024 | | | | | | | | | | | | | | | |
| 9.0 | .175 | .084 | .024 | .171 | .083 | .023 | .165 | .081 | .023 | .158 | .079 | .023 | .153 | .077 | .022 | | | | | | | | | | | | | | | |
| 10.0 | .164 | .079 | .022 | .161 | .078 | .022 | .155 | .076 | .021 | .149 | .074 | .021 | .144 | .072 | .021 | | | | | | | | | | | | | | | |

| pcc | 80% | | | 70% | | | 50% | | | 30% | | | 10% | | | 0 |
|------|-----------------------|------|------|------|------|------|---|------|------|------|------|------|------|------|------|---|
| pw | 50% | 30% | 10% | 50% | 30% | 10% | 50% | 30% | 10% | 50% | 30% | 10% | 50% | 30% | 10% | 0 |
| pfc | 20% | | | 20% | | | 20% | | | 20% | | | 20% | | | 0 |
| RCR | RCR:Room Cavity Ratio | | | | | | Ceiling Cavity Exitance Coefficients (CCEC) | | | | | | | | | |
| 0.0 | .221 | .221 | .221 | .189 | .189 | .189 | .129 | .129 | .129 | .074 | .074 | .074 | .024 | .024 | .024 | |
| 1.0 | .212 | .187 | .164 | .182 | .160 | .141 | .124 | .110 | .097 | .072 | .064 | .057 | .023 | .021 | .018 | |
| 2.0 | .204 | .163 | .128 | .175 | .140 | .110 | .120 | .097 | .077 | .069 | .056 | .045 | .022 | .018 | .015 | |
| 3.0 | .197 | .145 | .105 | .169 | .125 | .091 | .116 | .087 | .064 | .067 | .051 | .037 | .021 | .017 | .012 | |
| 4.0 | .189 | .132 | .089 | .162 | .114 | .077 | .112 | .080 | .054 | .065 | .047 | .032 | .021 | .015 | .011 | |
| 5.0 | .182 | .122 | .078 | .156 | .106 | .068 | .107 | .074 | .048 | .062 | .043 | .028 | .020 | .014 | .009 | |
| 6.0 | .174 | .114 | .070 | .150 | .099 | .061 | .103 | .069 | .043 | .060 | .041 | .026 | .019 | .013 | .009 | |
| 7.0 | .167 | .107 | .065 | .144 | .093 | .056 | .099 | .065 | .040 | .058 | .038 | .024 | .019 | .013 | .008 | |
| 8.0 | .161 | .101 | .060 | .138 | .088 | .052 | .096 | .062 | .037 | .056 | .036 | .022 | .018 | .012 | .007 | |
| 9.0 | .155 | .096 | .057 | .133 | .084 | .050 | .092 | .059 | .035 | .054 | .035 | .021 | .017 | .011 | .007 | |
| 10.0 | .149 | .092 | .054 | .128 | .080 | .047 | .089 | .056 | .034 | .052 | .033 | .020 | .017 | .011 | .007 | |

C Range: 0 - 360DEG
C Interval: 30.0DEG
Test Speed: HIGH
Temperature:25.3℃
Operators:
Test Date:2025-03-17

γ Range: 0 - 180DEG
γ Interval: 1.0DEG
Test System:EVERFINE GO-2000B_V1 SYSTEM V2.00.488
Humidity:65.0%
Test Distance:6.360m [K=1.0000]
Remarks:

UGR(Unified Glare Rating) Table

| | | | | | | | | | | | |
|--|-----|------------------|------|------|------|-----------------|----------------|------------------|------|------|------|
| Test:U:24.00V I:0.4760A P:11.42W PF:1.000 Freq:0Hz Lamp Flux:164.83lx1 lm | | | | | | | | | | | |
| NAME: SF16-24V-5050-70-SPI-RGBW(3000K)-G | | | | | | TYPE: | | WEIGHT: | | | |
| SPEC.: | | | | | | DIM.: Length=1m | | SERIAL No.: | | | |
| MFR.: OLympia lighting | | | | | | SUR.: | | Shielding Angle: | | | |
| ceiling/cavity | 0.7 | 0.7 | 0.5 | 0.5 | 0.3 | 0.7 | 0.7 | 0.5 | 0.5 | 0.3 | |
| walls | 0.5 | 0.3 | 0.5 | 0.3 | 0.3 | 0.5 | 0.3 | 0.5 | 0.3 | 0.3 | |
| working plane | 0.2 | 0.2 | 0.2 | 0.2 | 0.2 | 0.2 | 0.2 | 0.2 | 0.2 | 0.2 | |
| Room dimensions | | Viewed crosswise | | | | | Viewed endwise | | | | |
| x = 2H y = 2H | 2H | 22.7 | 24.2 | 23.0 | 24.4 | 24.7 | 22.7 | 24.2 | 23.0 | 24.4 | 24.7 |
| | 3H | 24.3 | 25.7 | 24.7 | 26.0 | 26.3 | 24.4 | 25.7 | 24.7 | 26.0 | 26.4 |
| | 4H | 25.1 | 26.4 | 25.5 | 26.7 | 27.1 | 25.1 | 26.4 | 25.5 | 26.7 | 27.1 |
| | 6H | 25.7 | 26.9 | 26.1 | 27.3 | 27.6 | 25.7 | 27.0 | 26.1 | 27.3 | 27.7 |
| | 8H | 25.9 | 27.1 | 26.3 | 27.5 | 27.9 | 26.0 | 27.2 | 26.4 | 27.5 | 27.9 |
| | 12H | 26.1 | 27.3 | 26.6 | 27.7 | 28.1 | 26.2 | 27.3 | 26.6 | 27.7 | 28.1 |
| 4H | 2H | 23.3 | 24.6 | 23.7 | 24.9 | 25.3 | 23.3 | 24.6 | 23.7 | 24.9 | 25.3 |
| | 3H | 25.2 | 26.3 | 25.6 | 26.7 | 27.1 | 25.2 | 26.3 | 25.6 | 26.7 | 27.1 |
| | 4H | 26.1 | 27.1 | 26.5 | 27.5 | 27.9 | 26.1 | 27.1 | 26.5 | 27.5 | 27.9 |
| | 6H | 26.8 | 27.7 | 27.3 | 28.2 | 28.6 | 26.9 | 27.8 | 27.3 | 28.2 | 28.7 |
| | 8H | 27.1 | 28.0 | 27.6 | 28.4 | 28.9 | 27.2 | 28.0 | 27.6 | 28.5 | 29.0 |
| | 12H | 27.4 | 28.2 | 27.9 | 28.7 | 29.2 | 27.4 | 28.2 | 27.9 | 28.7 | 29.2 |
| 8H | 4H | 26.4 | 27.3 | 26.9 | 27.7 | 28.2 | 26.4 | 27.3 | 26.9 | 27.7 | 28.2 |
| | 6H | 27.3 | 28.1 | 27.8 | 28.5 | 29.0 | 27.4 | 28.1 | 27.9 | 28.6 | 29.1 |
| | 8H | 27.8 | 28.4 | 28.3 | 28.9 | 29.4 | 27.8 | 28.4 | 28.3 | 28.9 | 29.5 |
| | 12H | 28.2 | 28.7 | 28.7 | 29.2 | 29.8 | 28.2 | 28.7 | 28.7 | 29.3 | 29.8 |
| 12H | 4H | 26.4 | 27.2 | 26.9 | 27.7 | 28.2 | 26.4 | 27.2 | 26.9 | 27.7 | 28.2 |
| | 6H | 27.4 | 28.1 | 27.9 | 28.6 | 29.1 | 27.5 | 28.1 | 28.0 | 28.6 | 29.1 |
| | 8H | 27.9 | 28.5 | 28.4 | 29.0 | 29.5 | 27.9 | 28.5 | 28.5 | 29.0 | 29.6 |
| Variations with the observer position at spacings(CIE Pub.117): | | | | | | | | | | | |
| S = 1.0H | | + 0.1 / - 0.2 | | | | | + 0.1 / - 0.2 | | | | |
| 1.5H | | + 0.2 / - 0.3 | | | | | + 0.2 / - 0.3 | | | | |
| 2.0H | | + 0.1 / - 0.3 | | | | | + 0.1 / - 0.3 | | | | |

CIE Pub.117, 164.8 lm Total Lamp Luminous Flux Correct (8log(F/F0) = -6.3)
Area: 0.0165 m2

C Range: 0 - 360DEG
C Interval: 30.0DEG
Test Speed: HIGH
Temperature:25.3℃
Operators:
Test Date:2025-03-17

γ Range: 0 - 180DEG
γ Interval: 1.0DEG
Test System:EVERFINE GO-2000B_V1 SYSTEM V2.00.488
Humidity:65.0%
Test Distance:6.360m [K=1.0000]
Remarks:

UTILIZATION FACTORS TABLE

| | | |
|--|-----------------|------------------|
| Test:U:24.00V I:0.4760A P:11.42W PF:1.000 Freq:0Hz Lamp Flux:164.83lx1 lm | | |
| NAME: SF16-24V-5050-70-SPI-RGBW(3000K)-G | TYPE: | WEIGHT: |
| SPEC.: | DIM.: Length=1m | SERIAL No.: |
| MFR.: OLympia lighting | SUR.: | Shielding Angle: |

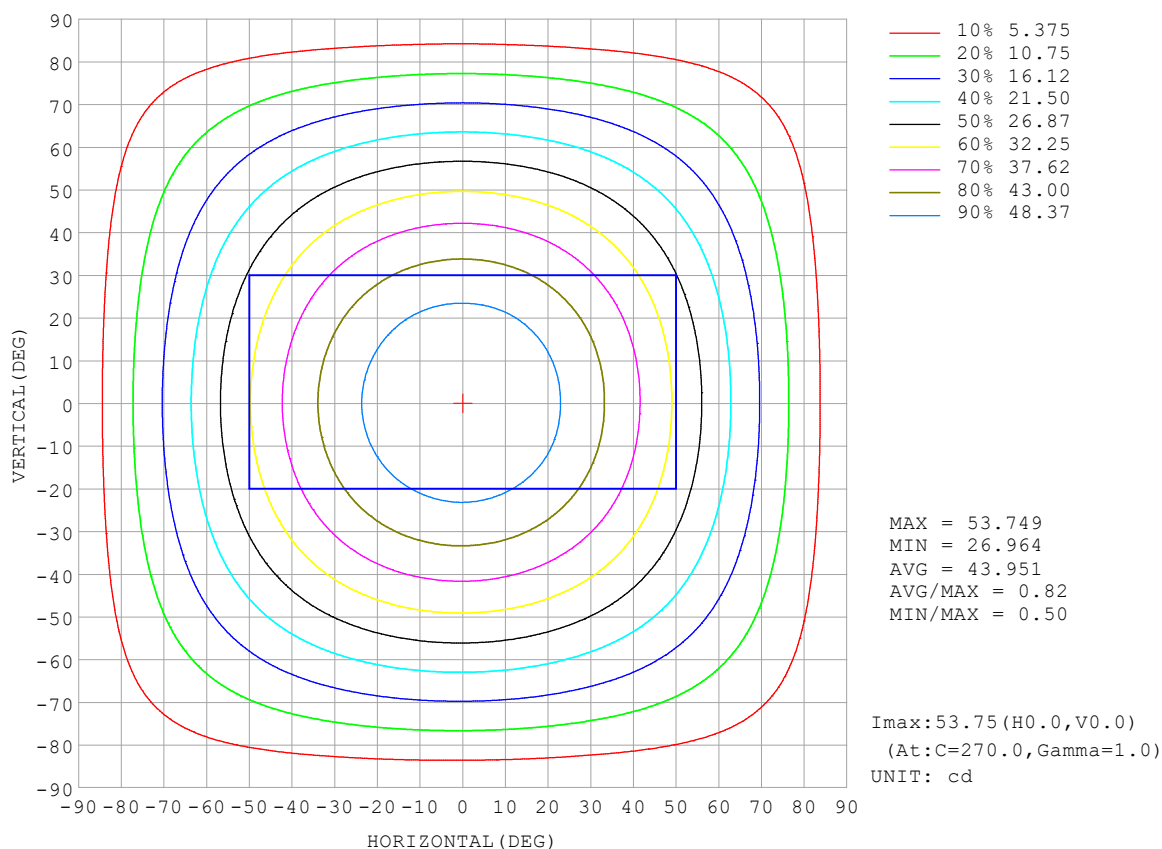
| REFLECTANCE | | | | | | | | | | |
|----------------------------------|--|-----|-----------|-----|-----|-----|-----|---------------|-----|--------|
| Ceiling | 0.8 | 0.8 | 0.8 | 0.7 | 0.7 | 0.7 | 0.5 | 0.5 | 0.5 | 0 |
| Walls | 0.7 | 0.5 | 0.3 | 0.7 | 0.5 | 0.3 | 0.7 | 0.5 | 0.3 | 0 |
| Working plane | 0.2 | 0.2 | 0.2 | 0.2 | 0.2 | 0.2 | 0.2 | 0.2 | 0.2 | 0 |
| ROOM INDEX | UTILIZATION FACTORS (PERCENT) $k(RI) \times RCR = 5$ | | | | | | | | | |
| $k = 0.60$ | 56 | 44 | 37 | 55 | 43 | 37 | 53 | 43 | 36 | 30 |
| 0.80 | 65 | 53 | 46 | 64 | 53 | 46 | 62 | 52 | 45 | 38 |
| 1.00 | 74 | 62 | 55 | 72 | 61 | 54 | 70 | 63 | 53 | 46 |
| 1.25 | 81 | 70 | 62 | 79 | 69 | 62 | 76 | 67 | 61 | 53 |
| 1.50 | 86 | 75 | 68 | 84 | 74 | 67 | 80 | 72 | 66 | 58 |
| 2.00 | 93 | 83 | 77 | 90 | 82 | 76 | 86 | 79 | 74 | 65 |
| 2.50 | 97 | 88 | 82 | 94 | 87 | 81 | 90 | 84 | 78 | 69 |
| 3.00 | 100 | 93 | 87 | 98 | 91 | 85 | 93 | 87 | 83 | 73 |
| 4.00 | 104 | 98 | 93 | 101 | 96 | 91 | 96 | 92 | 88 | 78 |
| 5.00 | 107 | 101 | 97 | 104 | 99 | 95 | 99 | 95 | 92 | 81 |
| ROOM INDEX | UF (total) | | | | | | | | | Direct |
| According to DIN EN 13032-2 2004 | | | Suspended | | | | | SHRNOM = 1.25 | | |

C Range: 0 - 360DEG
 C Interval: 30.0DEG
 Test Speed: HIGH
 Temperature: 25.3 °C
 Operators:
 Test Date: 2025-03-17

γ Range: 0 - 180DEG
 γ Interval: 1.0DEG
 Test System: EVERFINE GO-2000B_V1 SYSTEM V2.00.488
 Humidity: 65.0%
 Test Distance: 6.360m [K=1.0000]
 Remarks:

ISOCANDELA DIAGRAM

| | | |
|--|-----------------|------------------|
| Test:U:24.00V I:0.4760A P:11.42W PF:1.000 Freq:0Hz Lamp Flux:164.83lx1 lm | | |
| NAME: SF16-24V-5050-70-SPI-RGBW(3000K)-G | TYPE: | WEIGHT: |
| SPEC.: | DIM.: Length=1m | SERIAL No.: |
| MFR.: OLympia lighting | SUR.: | Shielding Angle: |

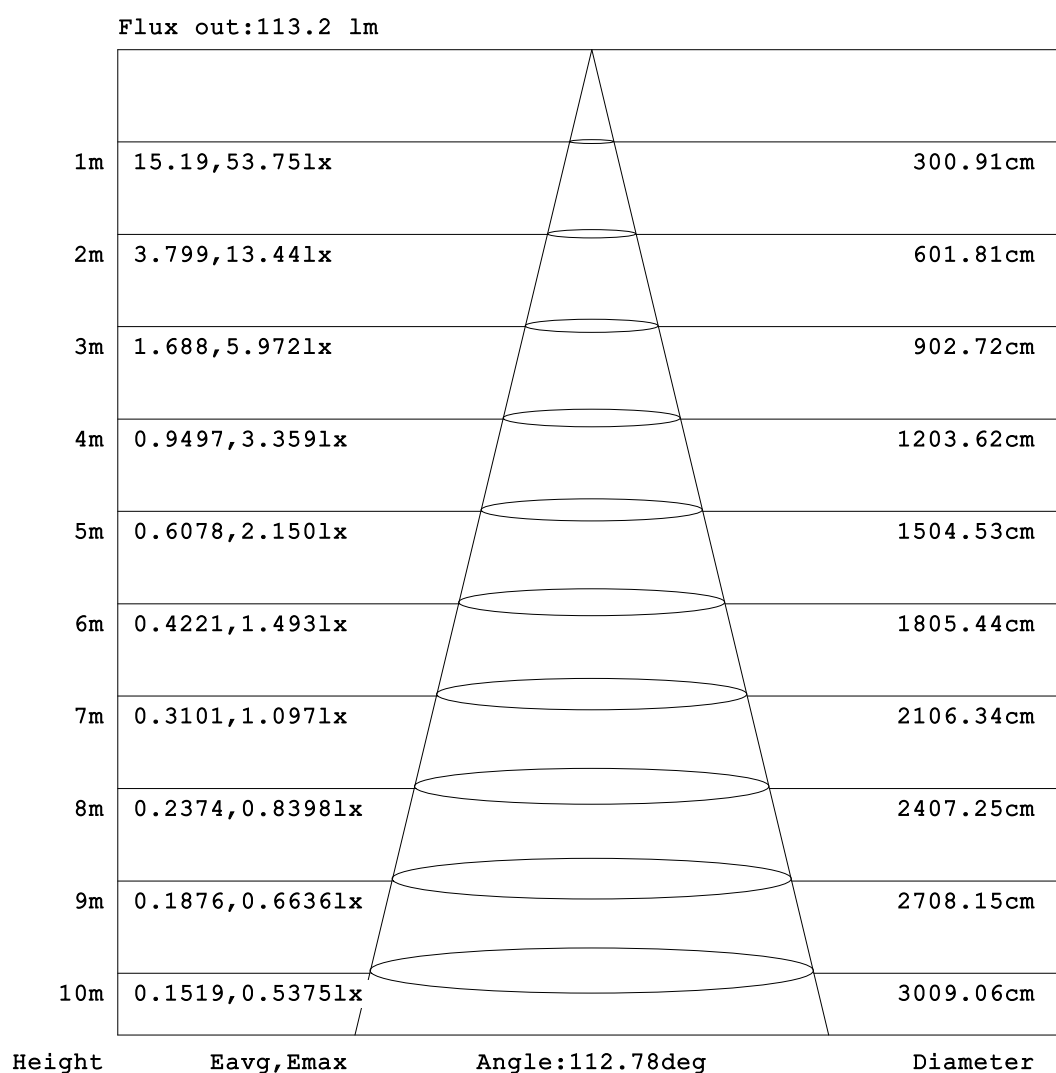


C Range: 0 - 360DEG
C Interval: 30.0DEG
Test Speed: HIGH
Temperature:25.3℃
Operators:
Test Date:2025-03-17

γ Range: 0 - 180DEG
γ Interval: 1.0DEG
Test System:EVERFINE GO-2000B_V1 SYSTEM V2.00.488
Humidity:65.0%
Test Distance:6.360m [K=1.0000]
Remarks:

AAI Figure

| | | |
|--|-----------------|------------------|
| Test:U:24.00V I:0.4760A P:11.42W PF:1.000 Freq:0Hz Lamp Flux:164.83lx1 lm | | |
| NAME: SF16-24V-5050-70-SPI-RGBW(3000K)-G | TYPE: | WEIGHT: |
| SPEC.: | DIM.: Length=1m | SERIAL No.: |
| MFR.: OLympia lighting | SUR.: | Shielding Angle: |



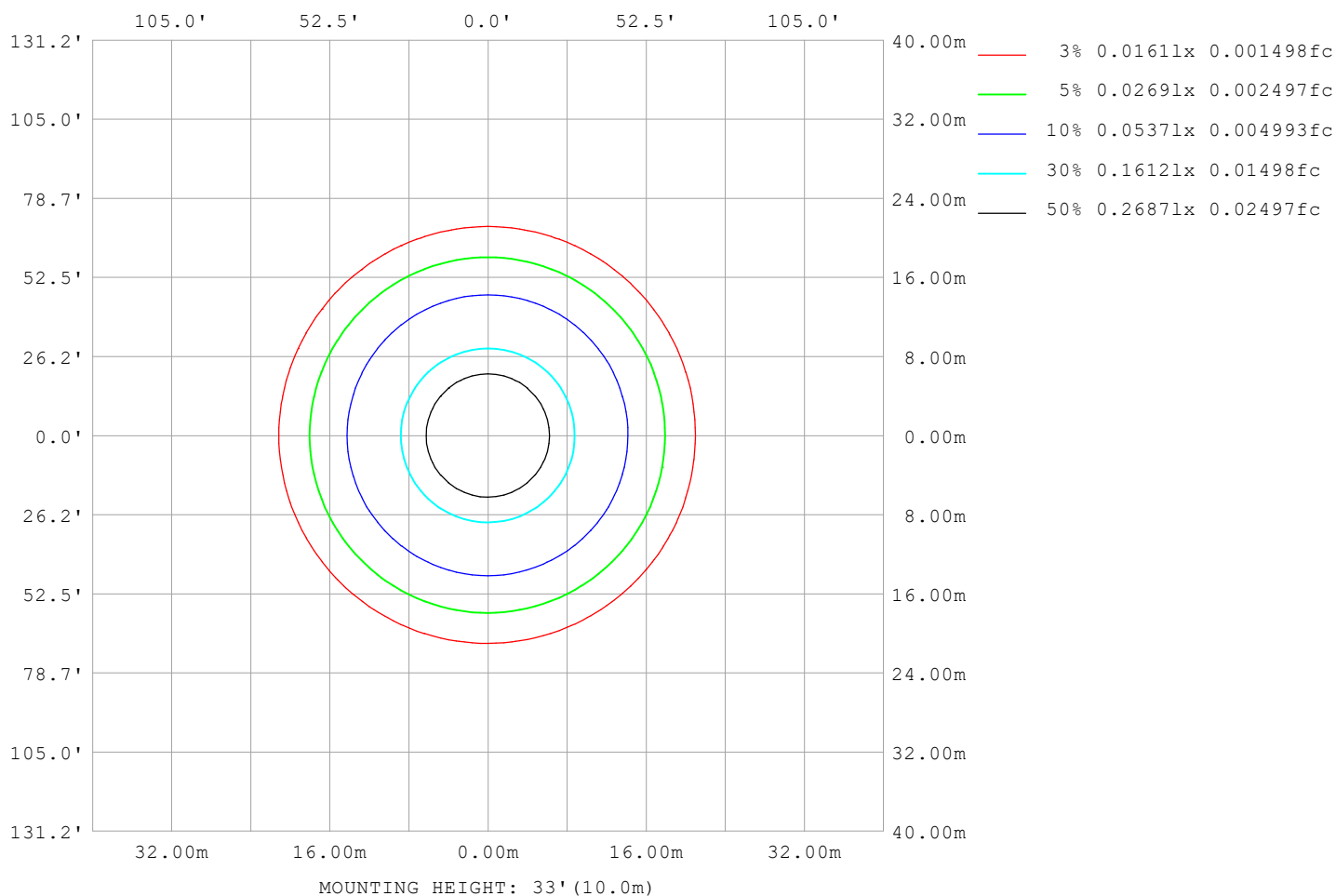
Note:The Curves indicate the illuminated area and the average illumination when the luminaire is at different distance.

C Range: 0 - 360DEG
C Interval: 30.0DEG
Test Speed: HIGH
Temperature:25.3℃
Operators:
Test Date:2025-03-17

γ Range: 0 - 180DEG
γ Interval: 1.0DEG
Test System:EVERFINE GO-2000B_V1 SYSTEM V2.00.488
Humidity:65.0%
Test Distance:6.360m [K=1.0000]
Remarks:

ISOLUX DIAGRAM

| | | |
|--|-----------------|------------------|
| Test:U:24.00V I:0.4760A P:11.42W PF:1.000 Freq:0Hz Lamp Flux:164.83lx1 lm | | |
| NAME: SF16-24V-5050-70-SPI-RGBW(3000K)-G | TYPE: | WEIGHT: |
| SPEC.: | DIM.: Length=1m | SERIAL No.: |
| MFR.: OLympia lighting | SUR.: | Shielding Angle: |



C Range: 0 - 360DEG
C Interval: 30.0DEG
Test Speed: HIGH
Temperature: 25.3°C
Operators:
Test Date: 2025-03-17

γ Range: 0 - 180DEG
γ Interval: 1.0DEG
Test System: EVERFINE GO-2000B_V1 SYSTEM V2.00.488
Humidity: 65.0%
Test Distance: 6.360m [K=1.0000]
Remarks:

LED Avg.L Report

| | | |
|--|-----------------|------------------|
| Test:U:24.00V I:0.4760A P:11.42W PF:1.000 Freq:0Hz Lamp Flux:164.831x1 lm | | |
| NAME: SF16-24V-5050-70-SPI-RGBW(3000K)-G | TYPE: | WEIGHT: |
| SPEC.: | DIM.: Length=1m | SERIAL No.: |
| MFR.: OLympia lighting | SUR.: | Shielding Angle: |

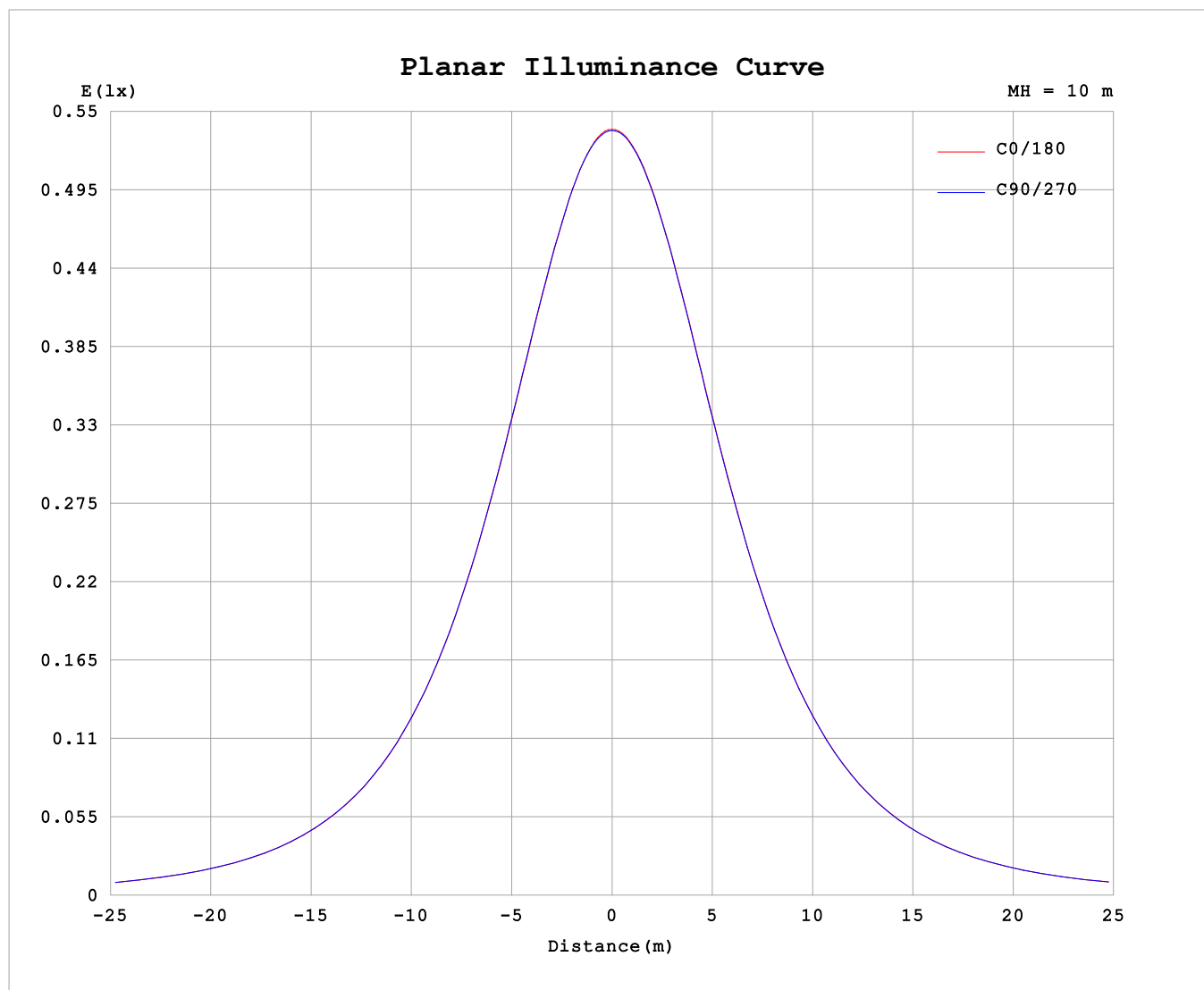
| AvgL | cd/m2 |
|------------------|-------|
| L_0~180 (65) av | 2878 |
| L_0~180 (75) av | 2848 |
| L_0~180 (85) av | 3363 |
| L_90~270 (65) av | 2889 |
| L_90~270 (75) av | 2876 |
| L_90~270 (85) av | 3152 |
| L_45 (65) av | 2882 |
| L_45 (75) av | 2853 |
| L_45 (85) av | 3172 |

Standard: GB/T 29293-2012

C Range: 0 - 360DEG
C Interval: 30.0DEG
Test Speed: HIGH
Temperature:25.3℃
Operators:
Test Date:2025-03-17

γ Range: 0 - 180DEG
γ Interval: 1.0DEG
Test System:EVERFINE GO-2000B_V1 SYSTEM V2.00.488
Humidity:65.0%
Test Distance:6.360m [K=1.0000]
Remarks:

Planar Illuminance Curve



C Range: 0 - 360DEG
C Interval: 30.0DEG
Test Speed: HIGH
Temperature: 25.3 °C
Operators:
Test Date: 2025-03-17

γ Range: 0 - 180DEG
 γ Interval: 1.0DEG
Test System: EVERFINE GO-2000B_V1 SYSTEM V2.00.488
Humidity: 65.0%
Test Distance: 6.360m [K=1.0000]
Remarks:

LUMINOUS DISTRIBUTION INTENSITY DATA

| | | | | | | | | | | | |
|--|--|--|--|--|--|-----------------|--|--|------------------|--|--|
| Test:U:24.00V I:0.4760A P:11.42W PF:1.000 Freq:0Hz Lamp Flux:164.83lx1 lm | | | | | | | | | | | |
| NAME: SF16-24V-5050-70-SPI-RGBW(3000K)-G | | | | | | TYPE: | | | WEIGHT: | | |
| SPEC.: | | | | | | DIM.: Length=1m | | | SERIAL No.: | | |
| MFR.: OLYMPIA lighting | | | | | | SUR.: | | | Shielding Angle: | | |

Table--1

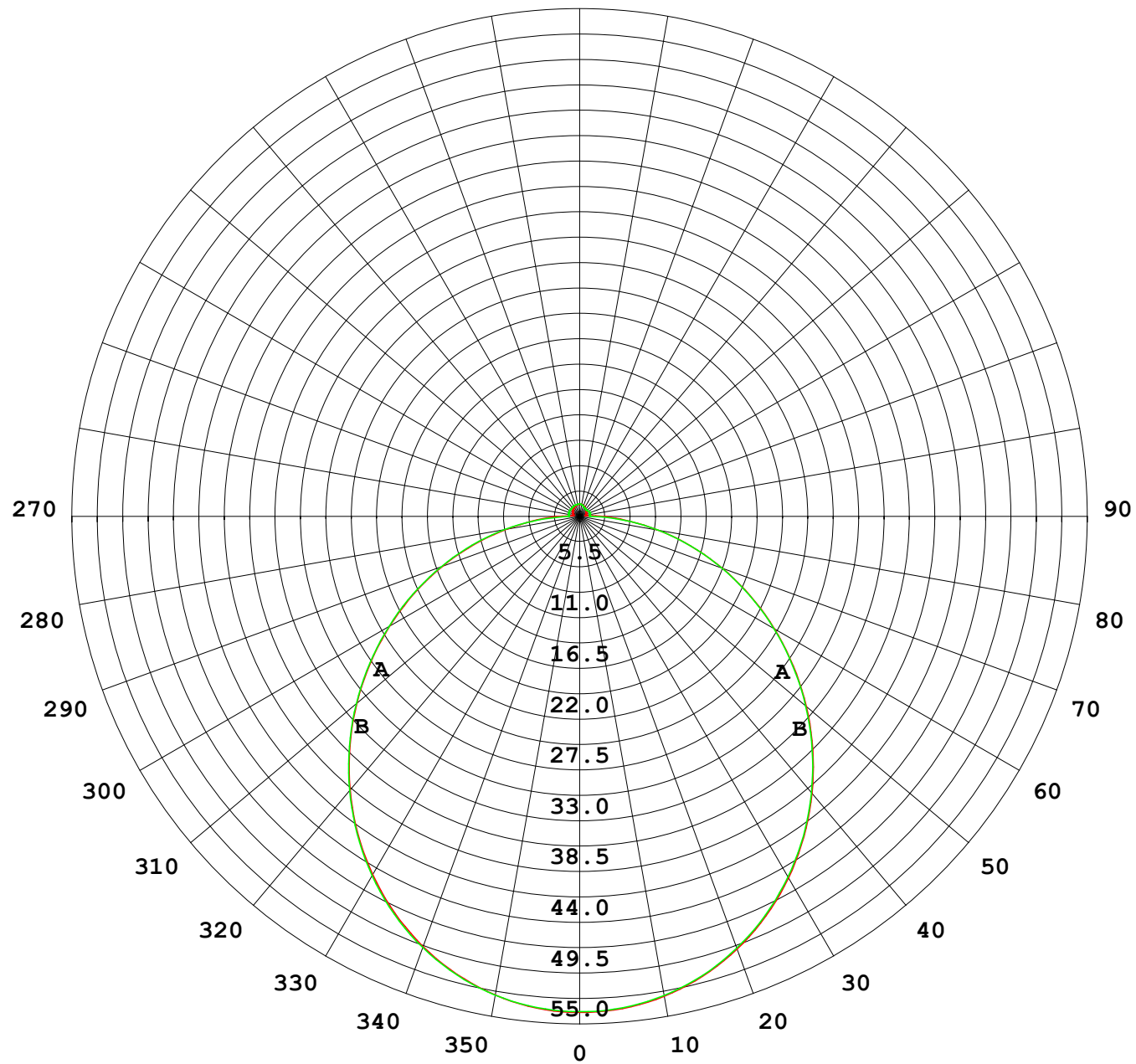
UNIT: cd

| C (DEG) γ (DEG) | 0 | 30 | 60 | 90 | 120 | 150 | 180 | 210 | 240 | 270 | 300 | 330 | | | | | | | |
|--------------------|------|------|------|------|------|------|------|------|------|------|------|------|--|--|--|--|--|--|--|
| 0 | 53.7 | 53.7 | 53.7 | 53.7 | 53.7 | 53.7 | 53.7 | 53.7 | 53.7 | 53.7 | 53.7 | 53.7 | | | | | | | |
| 5 | 53.4 | 53.4 | 53.4 | 53.4 | 53.5 | 53.4 | 53.5 | 53.5 | 53.5 | 53.5 | 53.4 | 53.5 | | | | | | | |
| 10 | 52.6 | 52.7 | 52.7 | 52.7 | 52.7 | 52.7 | 52.7 | 52.7 | 52.7 | 52.7 | 52.7 | 52.7 | | | | | | | |
| 15 | 51.3 | 51.4 | 51.4 | 51.5 | 51.5 | 51.5 | 51.5 | 51.5 | 51.5 | 51.5 | 51.5 | 51.4 | | | | | | | |
| 20 | 49.5 | 49.7 | 49.7 | 49.7 | 49.8 | 49.8 | 49.8 | 49.8 | 49.8 | 49.8 | 49.8 | 49.7 | | | | | | | |
| 25 | 47.4 | 47.5 | 47.5 | 47.6 | 47.6 | 47.7 | 47.7 | 47.7 | 47.7 | 47.7 | 47.7 | 47.5 | | | | | | | |
| 30 | 44.8 | 44.9 | 44.9 | 45.0 | 45.0 | 45.2 | 45.2 | 45.2 | 45.2 | 45.2 | 45.2 | 45.0 | | | | | | | |
| 35 | 41.9 | 41.9 | 42.0 | 42.0 | 42.1 | 42.2 | 42.3 | 42.3 | 42.3 | 42.3 | 42.3 | 42.1 | | | | | | | |
| 40 | 38.6 | 38.7 | 38.7 | 38.8 | 38.9 | 39.0 | 39.1 | 39.1 | 39.1 | 39.1 | 39.1 | 38.9 | | | | | | | |
| 45 | 35.1 | 35.2 | 35.2 | 35.3 | 35.4 | 35.6 | 35.7 | 35.6 | 35.7 | 35.6 | 35.6 | 35.4 | | | | | | | |
| 50 | 31.5 | 31.5 | 31.5 | 31.6 | 31.7 | 31.9 | 32.0 | 32.0 | 32.0 | 32.0 | 31.9 | 31.8 | | | | | | | |
| 55 | 27.6 | 27.7 | 27.7 | 27.8 | 27.9 | 28.1 | 28.2 | 28.2 | 28.2 | 28.2 | 28.1 | 27.9 | | | | | | | |
| 60 | 23.7 | 23.8 | 23.7 | 23.9 | 24.0 | 24.2 | 24.3 | 24.2 | 24.3 | 24.3 | 24.2 | 24.0 | | | | | | | |
| 65 | 19.8 | 19.8 | 19.8 | 19.9 | 20.0 | 20.2 | 20.4 | 20.3 | 20.3 | 20.4 | 20.3 | 20.1 | | | | | | | |
| 70 | 15.8 | 15.8 | 15.8 | 16.0 | 16.1 | 16.3 | 16.4 | 16.3 | 16.3 | 16.4 | 16.3 | 16.1 | | | | | | | |
| 75 | 11.8 | 11.9 | 11.9 | 12.1 | 12.1 | 12.3 | 12.5 | 12.4 | 12.4 | 12.5 | 12.3 | 12.1 | | | | | | | |
| 80 | 7.95 | 7.99 | 8.01 | 8.18 | 8.24 | 8.44 | 8.59 | 8.48 | 8.50 | 8.61 | 8.43 | 8.22 | | | | | | | |
| 85 | 4.65 | 4.54 | 4.19 | 4.32 | 4.40 | 4.81 | 5.03 | 4.79 | 4.65 | 4.75 | 4.57 | 4.65 | | | | | | | |
| 90 | 2.24 | 2.13 | 1.59 | 1.13 | 1.69 | 2.31 | 2.52 | 2.22 | 1.73 | 1.20 | 1.71 | 2.12 | | | | | | | |
| 95 | 0.79 | 0.84 | 1.02 | 1.18 | 1.00 | 0.82 | 0.81 | 0.69 | 0.85 | 1.10 | 0.84 | 0.69 | | | | | | | |
| 100 | 0.71 | 0.86 | 1.04 | 1.22 | 1.05 | 0.86 | 0.63 | 0.63 | 0.88 | 1.14 | 0.88 | 0.65 | | | | | | | |
| 105 | 0.74 | 0.90 | 1.09 | 1.26 | 1.09 | 0.90 | 0.68 | 0.67 | 0.92 | 1.17 | 0.90 | 0.68 | | | | | | | |
| 110 | 0.79 | 0.94 | 1.11 | 1.26 | 1.12 | 0.94 | 0.73 | 0.72 | 0.93 | 1.19 | 0.90 | 0.72 | | | | | | | |
| 115 | 0.84 | 0.98 | 1.13 | 1.26 | 1.14 | 0.98 | 0.78 | 0.77 | 0.94 | 1.20 | 0.90 | 0.76 | | | | | | | |
| 120 | 0.90 | 1.02 | 1.15 | 1.26 | 1.15 | 1.02 | 0.83 | 0.82 | 0.94 | 1.13 | 0.90 | 0.81 | | | | | | | |
| 125 | 0.95 | 1.05 | 1.17 | 1.26 | 1.17 | 1.07 | 0.88 | 0.87 | 0.95 | 1.07 | 0.91 | 0.86 | | | | | | | |
| 130 | 0.99 | 1.09 | 1.18 | 1.26 | 1.18 | 1.10 | 0.93 | 0.92 | 0.97 | 1.03 | 0.93 | 0.91 | | | | | | | |
| 135 | 1.03 | 1.13 | 1.20 | 1.27 | 1.20 | 1.13 | 0.98 | 0.96 | 0.99 | 1.01 | 0.94 | 0.91 | | | | | | | |
| 140 | 1.08 | 1.16 | 1.22 | 1.28 | 1.23 | 1.16 | 1.03 | 1.01 | 1.03 | 1.00 | 0.98 | 0.95 | | | | | | | |
| 145 | 1.12 | 1.18 | 1.24 | 1.30 | 1.25 | 1.19 | 1.07 | 1.06 | 1.08 | 1.01 | 1.03 | 1.00 | | | | | | | |
| 150 | 1.16 | 1.21 | 1.26 | 1.32 | 1.26 | 1.22 | 1.13 | 1.11 | 1.13 | 1.08 | 1.07 | 1.04 | | | | | | | |
| 155 | 1.20 | 1.24 | 1.28 | 1.33 | 1.28 | 1.25 | 1.17 | 1.16 | 1.18 | 1.13 | 1.16 | 1.09 | | | | | | | |
| 160 | 1.24 | 1.27 | 1.29 | 1.33 | 1.29 | 1.28 | 1.22 | 1.21 | 1.23 | 1.19 | 1.22 | 1.15 | | | | | | | |
| 165 | 1.27 | 1.30 | 1.30 | 1.33 | 1.30 | 1.32 | 1.26 | 1.25 | 1.28 | 1.26 | 1.27 | 1.19 | | | | | | | |
| 170 | 1.31 | 1.32 | 1.31 | 1.34 | 1.31 | 1.33 | 1.31 | 1.29 | 1.32 | 1.30 | 1.31 | 1.28 | | | | | | | |
| 175 | 1.32 | 1.34 | 1.33 | 1.35 | 1.33 | 1.34 | 1.33 | 1.32 | 1.35 | 1.33 | 1.34 | 1.32 | | | | | | | |
| 180 | 1.33 | 1.34 | 1.35 | 1.35 | 1.34 | 1.34 | 1.33 | 1.33 | 1.35 | 1.35 | 1.35 | 1.33 | | | | | | | |

C Range: 0 - 360DEG
C Interval: 30.0DEG
Test Speed: HIGH
Temperature:25.3℃
Operators:
Test Date:2025-03-17

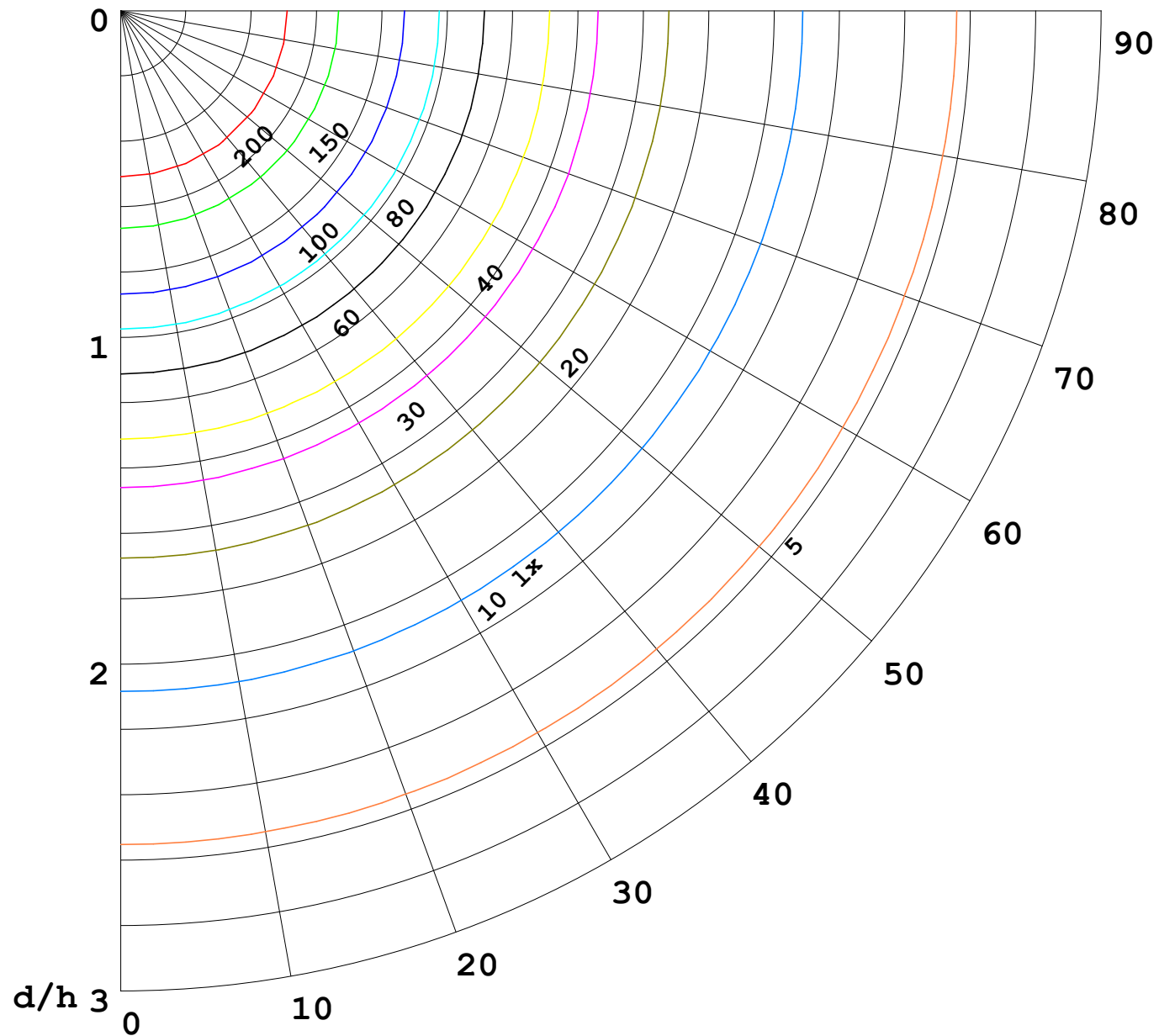
γ Range: 0 - 180DEG
γ Interval: 1.0DEG
Test System:EVERFINE GO-2000B_V1 SYSTEM V2.00.488
Humidity:65.0%
Test Distance:6.360m [K=1.0000]
Remarks:

I (cd)



1000 lm

$\kappa = 1$



F = 1000 lm
 K = 0.7
 Hcc = 0.8 m
 Hfc = 0.0 m
 Eave = 100 lx

| | Pcc | Pw | Pfc |
|-------|-----|----|-----|
| ————— | 70 | 50 | 30 |
| ————— | 50 | 30 | 20 |

