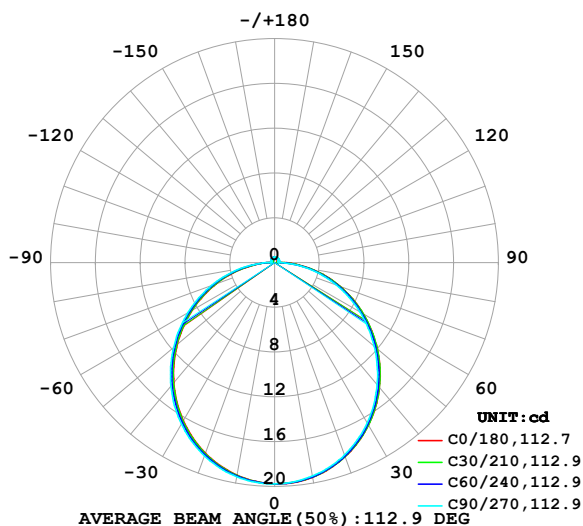


LUMINAIRE PHOTOMETRIC TEST REPORT

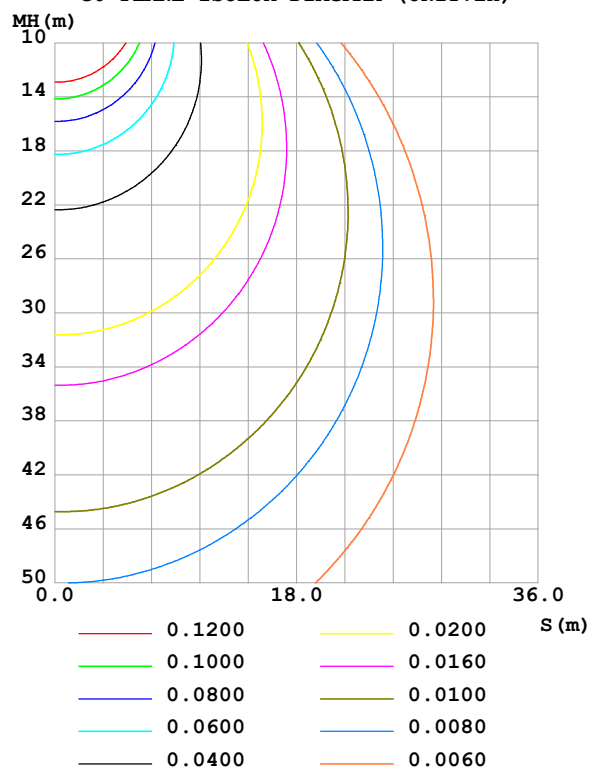
Test:U:24.00V I:0.2378A P:5.707W PF:1.000 Freq:0Hz Lamp Flux:60.514x1 lm		
NAME: SF16-24V-5050-70-DMX-RGBW(4000K)-R	TYPE:	WEIGHT:
SPEC.:	DIM.: Length=1m	SERIAL No.:
MFR.: OLympia lighting	SUR.:	Shielding Angle:

DATA OF LAMP		PHOTOMETRIC DATA Eff: 10.60 lm/W			
MODEL	5050	Imax (cd)	19.76	S/MH(C0/180)	1.23
NOMINAL POWER(W)		LOR(%)	100.0	S/MH(C90/270)	1.25
RATED VOLTAGE(V)	24	TOTAL FLUX(lm)	60.514	η UP,DN(C0-180)	2.0,48.0
NOMINAL FLUX(lm)	60.514	CIE CLASS	DIRECT	η UP,DN(C180-360)	2.0,48.0
LAMPS INSIDE	1	η up (%)	4.0	CIBSE SHR NOM	1.25
TEST VOLTAGE(V)		η down (%)	96.0	CIBSE SHR MAX	1.35

LUMINOUS INTENSITY DISTRIBUTION DIAGRAM



C0 PLANE ISOLUX DIAGRAM (UNIT:lx)



C Range: 0 - 360DEG
C Interval: 30.0DEG
Test Speed: HIGH
Temperature: 25.3 °C
Operators:
Test Date: 2025-03-12

γ Range: 0 - 180DEG
 γ Interval: 1.0DEG
Test System: EVERFINE GO-2000B_V1 SYSTEM V2.00.488
Humidity: 65.0%
Test Distance: 6.360m [K=1.0000]
Remarks:

ZONAL FLUX DIAGRAM

ZONAL FLUX DIAGRAM:

γ	C0	C45	C90	C135	C180	C225	C270	C315	γ	Φ zone	Φ total	%lum, lamp
10	19.47	19.45	19.37	19.30	19.28	19.34	19.43	19.48	0- 10	1.869	1.869	3.09,3.09
20	18.44	18.41	18.29	18.15	18.11	18.21	18.37	18.47	10- 20	5.342	7.211	11.9,11.9
30	16.77	16.72	16.54	16.35	16.31	16.44	16.65	16.81	20- 30	8.071	15.28	25.3,25.3
40	14.57	14.49	14.26	14.04	14.01	14.16	14.41	14.62	30- 40	9.701	24.98	41.3,41.3
50	11.97	11.88	11.61	11.36	11.35	11.51	11.79	12.03	40- 50	10.06	35.04	57.9,57.9
60	9.148	9.055	8.782	8.491	8.483	8.652	8.943	9.202	50- 60	9.198	44.24	73.1,73.1
70	6.226	6.134	5.879	5.565	5.556	5.719	6.014	6.277	60- 70	7.311	51.55	85.2,85.2
80	3.321	3.198	2.938	2.680	2.663	2.819	3.099	3.370	70- 80	4.711	56.27	93,93
90	0.9105	0.6256	0.3621	0.4994	0.5742	0.5248	0.3867	0.7990	80- 90	1.822	58.09	96,96
100	0.2848	0.3019	0.3651	0.3362	0.2620	0.3163	0.3534	0.3246	90-100	0.3998	58.49	96.7,96.7
110	0.2905	0.3336	0.3911	0.3639	0.2962	0.3436	0.3795	0.3333	100-110	0.3486	58.84	97.2,97.2
120	0.3303	0.3710	0.4143	0.3872	0.3304	0.3681	0.3940	0.3551	110-120	0.3531	59.19	97.8,97.8
130	0.3673	0.4040	0.4288	0.4119	0.3674	0.3954	0.4056	0.3784	120-130	0.3432	59.53	98.4,98.4
140	0.3959	0.4241	0.4520	0.4337	0.4044	0.4184	0.4201	0.4017	130-140	0.3155	59.85	98.9,98.9
150	0.4243	0.4572	0.4896	0.4628	0.4330	0.4428	0.4404	0.4236	140-150	0.2710	60.12	99.3,99.3
160	0.4585	0.4802	0.5041	0.4818	0.4756	0.4673	0.4607	0.4512	150-160	0.2121	60.33	99.7,99.7
170	0.4728	0.4946	0.5041	0.4948	0.4899	0.4888	0.4780	0.4832	160-170	0.1361	60.47	99.9,99.9
180	0.4842	0.4989	0.5041	0.5007	0.4899	0.4975	0.4983	0.5007	170-180	0.0470	60.51	100,100
DEG	LUMINOUS INTENSITY:cd									UNIT:lm		

Conical surface Flux(90deg): 30.049 lm

%lum = 49.7%

%lamp = 49.7%

Conical surface Flux(130deg): 48.187 lm

%lum = 79.6%

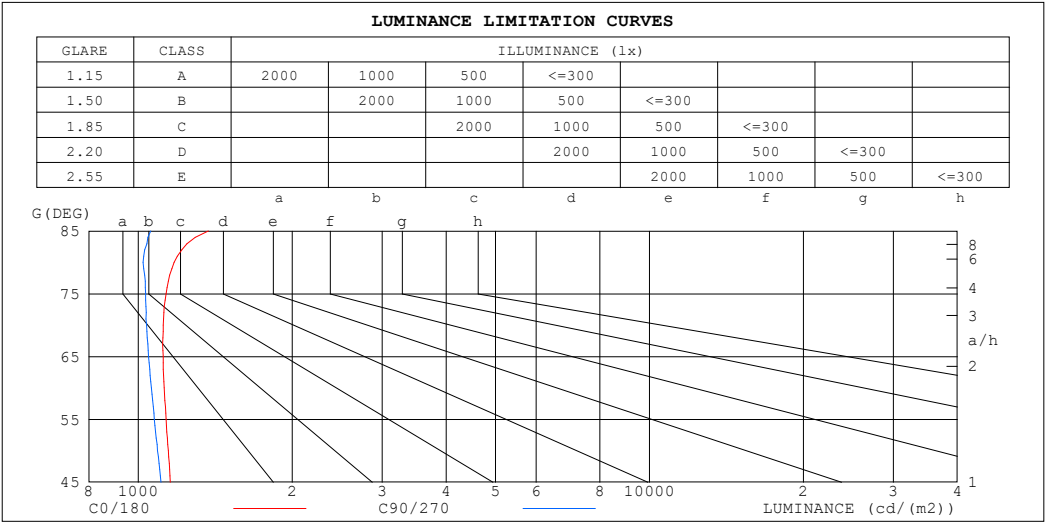
%lamp = 79.6%

C Range: 0 - 360DEG
 C Interval: 30.0DEG
 Test Speed: HIGH
 Temperature:25.3℃
 Operators:
 Test Date:2025-03-12

γ Range: 0 - 180DEG
 γ Interval: 1.0DEG
 Test System:EVERFINE GO-2000B_V1 SYSTEM V2.00.488
 Humidity:65.0%
 Test Distance:6.360m [K=1.0000]
 Remarks:

LUMINANCE LIMITATION CURVES

Test:U:24.00V I:0.2378A P:5.707W PF:1.000 Freq:0Hz Lamp Flux:60.514x1 lm		
NAME: SF16-24V-5050-70-DMX-RGBW(4000K)-R	TYPE:	WEIGHT:
SPEC.:	DIM.: Length=1m	SERIAL No.:
MFR.: OLympia lighting	SUR.:	Shielding Angle:



LUMINANCE cd/(m2)		
G (DEG)	C0/180	C90/270
85	1371	1058
80	1175	1022
75	1134	1034
70	1118	1038
65	1118	1047
60	1124	1060
55	1133	1075
50	1144	1090
45	1155	1107

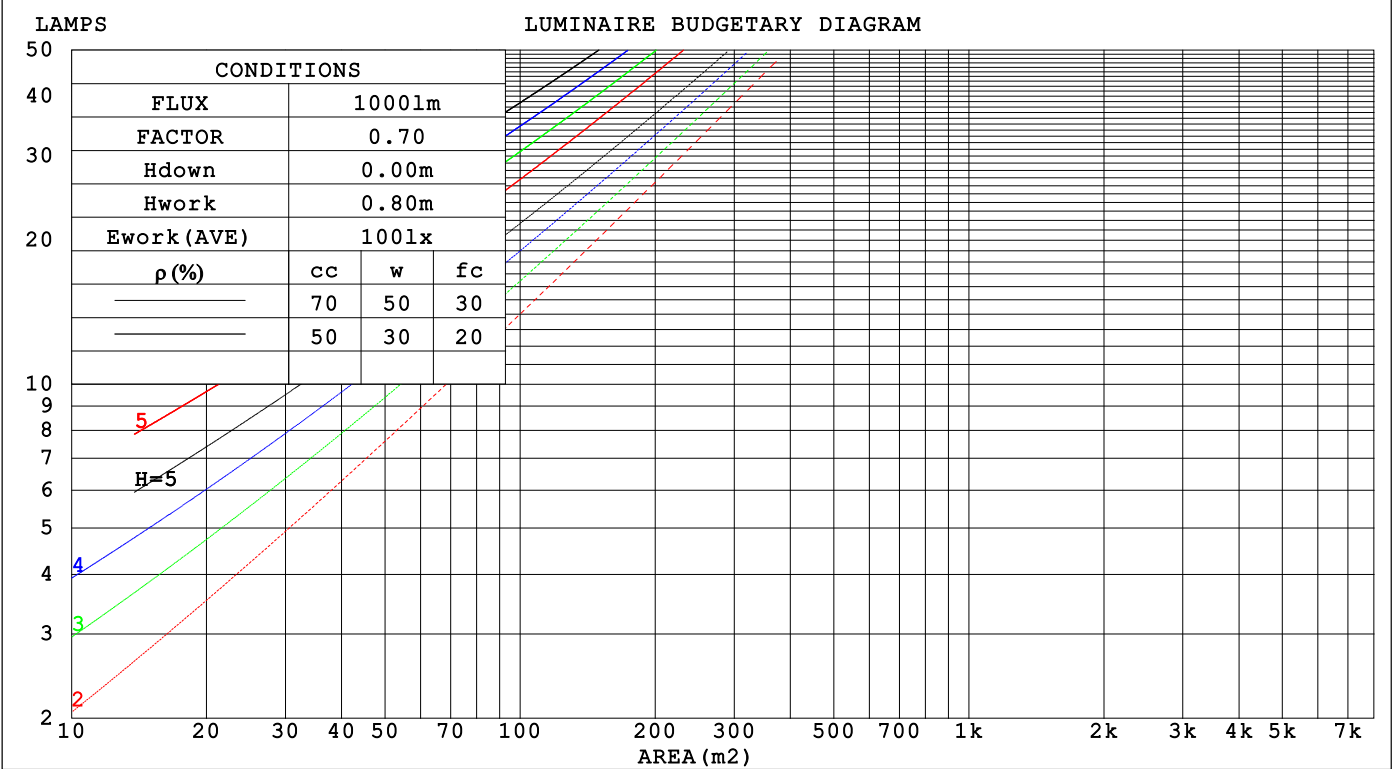
C Range: 0 - 360DEG
C Interval: 30.0DEG
Test Speed: HIGH
Temperature:25.3℃
Operators:
Test Date:2025-03-12

γ Range: 0 - 180DEG
γ Interval: 1.0DEG
Test System:EVERFINE GO-2000B_V1 SYSTEM V2.00.488
Humidity:65.0%
Test Distance:6.360m [K=1.0000]
Remarks:

CU AND LUMINAIRE BUDGETARY ESTIMATE DIAGRAM

Test:U:24.00V I:0.2378A P:5.707W PF:1.000 Freq:0Hz Lamp Flux:60.514x1 lm		
NAME: SF16-24V-5050-70-DMX-RGBW(4000K)-R	TYPE:	WEIGHT:
SPEC.:	DIM.: Length=1m	SERIAL No.:
MFR.: OLYMPIA lighting	SUR.:	Shielding Angle:

pcc	80%			70%			50%			30%			10%			0
pw	50%	30%	10%	50%	30%	10%	50%	30%	10%	50%	30%	10%	50%	30%	10%	0
pfc	20%			20%			20%			20%			20%			0
RCR	RCR:Room Cavity Ratio			Coefficients of Utilization(CU)												
0.0	1.18	1.18	1.18	1.15	1.15	1.15	1.09	1.09	1.09	1.03	1.03	1.03	.98	.98	.98	.96
1.0	1.02	.98	.93	.99	.95	.92	.94	.91	.88	.90	.87	.84	.86	.83	.81	.79
2.0	.89	.81	.75	.86	.80	.74	.82	.77	.72	.78	.74	.70	.75	.71	.68	.65
3.0	.78	.69	.62	.76	.68	.62	.72	.65	.60	.69	.63	.58	.66	.61	.57	.55
4.0	.69	.60	.53	.67	.59	.52	.64	.57	.51	.61	.55	.50	.58	.53	.49	.46
5.0	.61	.52	.45	.60	.51	.45	.57	.50	.44	.55	.48	.43	.52	.47	.42	.40
6.0	.55	.46	.39	.54	.45	.39	.52	.44	.38	.49	.43	.38	.48	.42	.37	.35
7.0	.50	.41	.35	.49	.40	.34	.47	.39	.34	.45	.38	.33	.43	.37	.33	.31
8.0	.45	.37	.31	.45	.36	.31	.43	.36	.30	.41	.35	.30	.40	.34	.29	.27
9.0	.42	.33	.28	.41	.33	.28	.39	.32	.27	.38	.32	.27	.37	.31	.27	.25
10.0	.38	.30	.25	.38	.30	.25	.36	.30	.25	.35	.29	.24	.34	.28	.24	.22



C Range: 0 - 360DEG
C Interval: 30.0DEG
Test Speed: HIGH
Temperature:25.3℃
Operators:
Test Date:2025-03-12

γ Range: 0 - 180DEG
γ Interval: 1.0DEG
Test System:EVERFINE GO-2000B_V1 SYSTEM V2.00.488
Humidity:65.0%
Test Distance:6.360m [K=1.0000]
Remarks:

WEC AND CCEC

Test:U:24.00V I:0.2378A P:5.707W PF:1.000 Freq:0Hz Lamp Flux:60.514x1 lm		
NAME: SF16-24V-5050-70-DMX-RGBW(4000K)-R	TYPE:	WEIGHT:
SPEC.:	DIM.: Length=1m	SERIAL No.:
MFR.: OLYMPIA lighting	SUR.:	Shielding Angle:

pcc	80%			70%			50%			30%			10%			0														
pw	50%	30%	10%	50%	30%	10%	50%	30%	10%	50%	30%	10%	50%	30%	10%	0														
pfc	20%			20%			20%			20%			20%			0														
RCR	RCR:Room Cavity Ratio															Wall Exitance Coefficients(WEC)														
0.0																														
1.0	.326	.185	.059	.318	.181	.058	.302	.173	.055	.288	.166	.053	.274	.159	.051															
2.0	.301	.165	.051	.293	.162	.050	.279	.155	.048	.267	.150	.047	.255	.144	.045															
3.0	.276	.147	.044	.269	.144	.043	.257	.139	.042	.245	.134	.041	.235	.130	.040															
4.0	.253	.131	.039	.247	.129	.038	.236	.125	.037	.226	.121	.037	.216	.117	.036															
5.0	.233	.119	.034	.228	.117	.034	.218	.113	.033	.208	.110	.033	.200	.107	.032															
6.0	.215	.108	.031	.211	.106	.031	.202	.103	.030	.193	.100	.030	.186	.098	.029															
7.0	.200	.099	.028	.196	.098	.028	.188	.095	.027	.180	.092	.027	.173	.090	.026															
8.0	.186	.091	.026	.183	.090	.025	.175	.088	.025	.169	.085	.025	.162	.083	.024															
9.0	.174	.084	.024	.171	.083	.023	.164	.081	.023	.158	.079	.023	.152	.077	.022															
10.0	.164	.079	.022	.161	.078	.022	.155	.076	.021	.149	.074	.021	.144	.072	.021															

pcc	80%			70%			50%			30%			10%			0
pw	50%	30%	10%	50%	30%	10%	50%	30%	10%	50%	30%	10%	50%	30%	10%	0
pfc	20%			20%			20%			20%			20%			0
RCR	RCR:Room Cavity Ratio						Ceiling Cavity Exitance Coefficients (CCEC)									
0.0	.221	.221	.221	.189	.189	.189	.129	.129	.129	.074	.074	.074	.024	.024	.024	
1.0	.212	.187	.164	.182	.160	.141	.124	.110	.098	.071	.064	.057	.023	.021	.018	
2.0	.204	.163	.128	.175	.140	.111	.120	.097	.077	.069	.056	.045	.022	.018	.015	
3.0	.197	.146	.105	.169	.126	.091	.116	.087	.064	.067	.051	.038	.021	.017	.012	
4.0	.189	.132	.089	.162	.114	.077	.112	.080	.054	.065	.047	.032	.021	.015	.011	
5.0	.182	.122	.078	.156	.106	.068	.107	.074	.048	.062	.043	.029	.020	.014	.009	
6.0	.174	.114	.070	.150	.099	.061	.103	.069	.043	.060	.041	.026	.019	.013	.009	
7.0	.167	.107	.065	.144	.093	.056	.100	.065	.040	.058	.038	.024	.019	.013	.008	
8.0	.161	.101	.060	.139	.088	.053	.096	.062	.037	.056	.036	.022	.018	.012	.007	
9.0	.155	.096	.057	.133	.084	.050	.092	.059	.035	.054	.035	.021	.017	.011	.007	
10.0	.149	.092	.054	.128	.080	.047	.089	.056	.034	.052	.033	.020	.017	.011	.007	

C Range: 0 - 360DEG
C Interval: 30.0DEG
Test Speed: HIGH
Temperature:25.3℃
Operators:
Test Date:2025-03-12

γ Range: 0 - 180DEG
γ Interval: 1.0DEG
Test System:EVERFINE GO-2000B_V1 SYSTEM V2.00.488
Humidity:65.0%
Test Distance:6.360m [K=1.0000]
Remarks:

UGR(Unified Glare Rating) Table

Test:U:24.00V I:0.2378A P:5.707W PF:1.000 Freq:0Hz Lamp Flux:60.514x1 lm											
NAME: SF16-24V-5050-70-DMX-RGBW(4000K)-R					TYPE:			WEIGHT:			
SPEC.:					DIM.: Length=1m			SERIAL No.:			
MFR.: OLympia lighting					SUR.:			Shielding Angle:			
ceiling/cavity	0.7	0.7	0.5	0.5	0.3	0.7	0.7	0.5	0.5	0.3	
walls	0.5	0.3	0.5	0.3	0.3	0.5	0.3	0.5	0.3	0.3	
working plane	0.2	0.2	0.2	0.2	0.2	0.2	0.2	0.2	0.2	0.2	
Room dimensions		Viewed crosswise					Viewed endwise				
x = 2H y = 2H	2H	22.8	24.3	23.1	24.6	24.9	22.6	24.1	22.9	24.3	24.6
	3H	24.6	25.9	24.9	26.2	26.6	24.3	25.6	24.6	25.9	26.3
	4H	25.3	26.7	25.7	27.0	27.3	25.0	26.3	25.4	26.6	27.0
	6H	26.0	27.3	26.4	27.6	28.0	25.6	26.8	26.0	27.2	27.5
	8H	26.3	27.5	26.7	27.9	28.2	25.8	27.0	26.2	27.4	27.8
	12H	26.6	27.7	27.0	28.1	28.5	26.0	27.2	26.4	27.5	27.9
4H	2H	23.4	24.7	23.8	25.1	25.4	23.3	24.6	23.6	24.9	25.2
	3H	25.4	26.5	25.8	26.9	27.3	25.1	26.3	25.5	26.6	27.0
	4H	26.3	27.4	26.8	27.8	28.2	26.0	27.1	26.5	27.5	27.9
	6H	27.2	28.1	27.6	28.5	29.0	26.8	27.7	27.2	28.1	28.6
	8H	27.5	28.4	28.0	28.8	29.3	27.1	28.0	27.6	28.4	28.9
	12H	27.9	28.7	28.3	29.1	29.6	27.3	28.1	27.8	28.6	29.1
8H	4H	26.7	27.5	27.1	28.0	28.4	26.4	27.3	26.9	27.7	28.2
	6H	27.7	28.4	28.2	28.9	29.4	27.3	28.1	27.8	28.5	29.1
	8H	28.2	28.8	28.7	29.3	29.9	27.8	28.4	28.3	28.9	29.4
	12H	28.6	29.2	29.2	29.7	30.3	28.1	28.7	28.7	29.2	29.8
12H	4H	26.7	27.5	27.2	27.9	28.4	26.4	27.2	26.9	27.7	28.2
	6H	27.8	28.4	28.3	28.9	29.5	27.5	28.1	28.0	28.6	29.1
	8H	28.3	28.9	28.9	29.4	30.0	27.9	28.5	28.5	29.0	29.6
Variations with the observer position at spacings(CIE Pub.117):											
S = 1.0H		+ 0.1 / - 0.2					+ 0.1 / - 0.2				
1.5H		+ 0.2 / - 0.3					+ 0.2 / - 0.3				
2.0H		+ 0.1 / - 0.3					+ 0.1 / - 0.3				

CIE Pub.117, 60.51 lm Total Lamp Luminous Flux Correct (8log(F/F0) = -9.7)
Area: 0.0165 m2

C Range: 0 - 360DEG
C Interval: 30.0DEG
Test Speed: HIGH
Temperature:25.3℃
Operators:
Test Date:2025-03-12

γ Range: 0 - 180DEG
γ Interval: 1.0DEG
Test System:EVERFINE GO-2000B_V1 SYSTEM V2.00.488
Humidity:65.0%
Test Distance:6.360m [K=1.0000]
Remarks:

UTILIZATION FACTORS TABLE

Test:U:24.00V I:0.2378A P:5.707W PF:1.000 Freq:0Hz Lamp Flux:60.514x1 lm		
NAME: SF16-24V-5050-70-DMX-RGBW(4000K)-R	TYPE:	WEIGHT:
SPEC.:	DIM.: Length=1m	SERIAL No.:
MFR.: OLympia lighting	SUR.:	Shielding Angle:

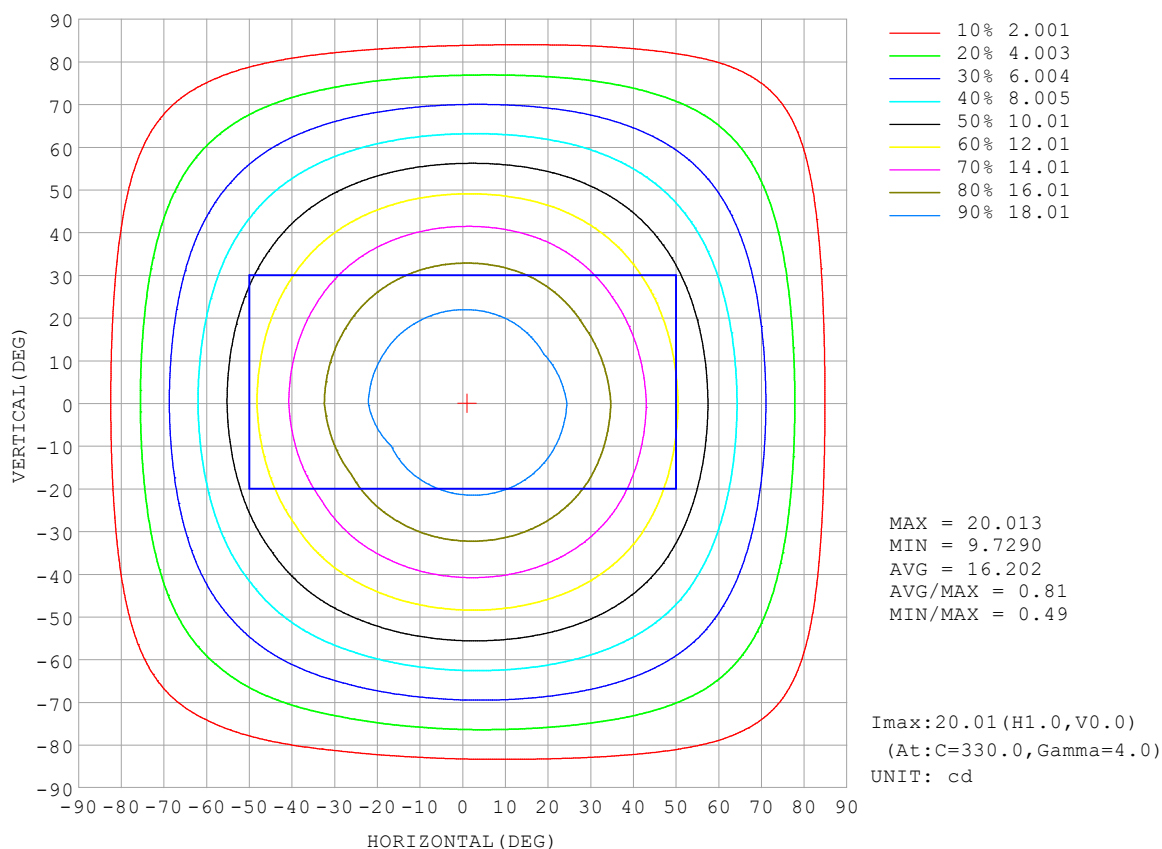
REFLECTANCE										
Ceiling	0.8	0.8	0.8	0.7	0.7	0.7	0.5	0.5	0.5	0
Walls	0.7	0.5	0.3	0.7	0.5	0.3	0.7	0.5	0.3	0
Working plane	0.2	0.2	0.2	0.2	0.2	0.2	0.2	0.2	0.2	0
ROOM INDEX	UTILIZATION FACTORS (PERCENT) $k(RI) \times RCR = 5$									
$k = 0.60$	56	44	37	55	44	37	53	43	36	30
0.80	65	54	46	64	53	46	62	52	45	38
1.00	74	62	55	72	61	54	70	63	54	46
1.25	81	70	62	79	69	62	76	67	61	53
1.50	86	75	68	84	74	67	80	72	66	58
2.00	93	84	77	90	82	76	86	79	74	65
2.50	97	88	82	94	87	81	90	84	79	69
3.00	100	93	87	98	91	86	93	87	83	73
4.00	104	98	93	102	96	91	97	92	88	78
5.00	107	102	97	104	99	95	99	95	92	81
ROOM INDEX	UF (total)									Direct
According to DIN EN 13032-2 2004			Suspended					SHRNOM = 1.25		

C Range: 0 - 360DEG
 C Interval: 30.0DEG
 Test Speed: HIGH
 Temperature: 25.3 °C
 Operators:
 Test Date: 2025-03-12

γ Range: 0 - 180DEG
 γ Interval: 1.0DEG
 Test System: EVERFINE GO-2000B_V1 SYSTEM V2.00.488
 Humidity: 65.0%
 Test Distance: 6.360m [K=1.0000]
 Remarks:

ISOCANDELA DIAGRAM

Test:U:24.00V I:0.2378A P:5.707W PF:1.000 Freq:0Hz Lamp Flux:60.514x1 lm		
NAME: SF16-24V-5050-70-DMX-RGBW(4000K)-R	TYPE:	WEIGHT:
SPEC.:	DIM.: Length=1m	SERIAL No.:
MFR.: OLympia lighting	SUR.:	Shielding Angle:

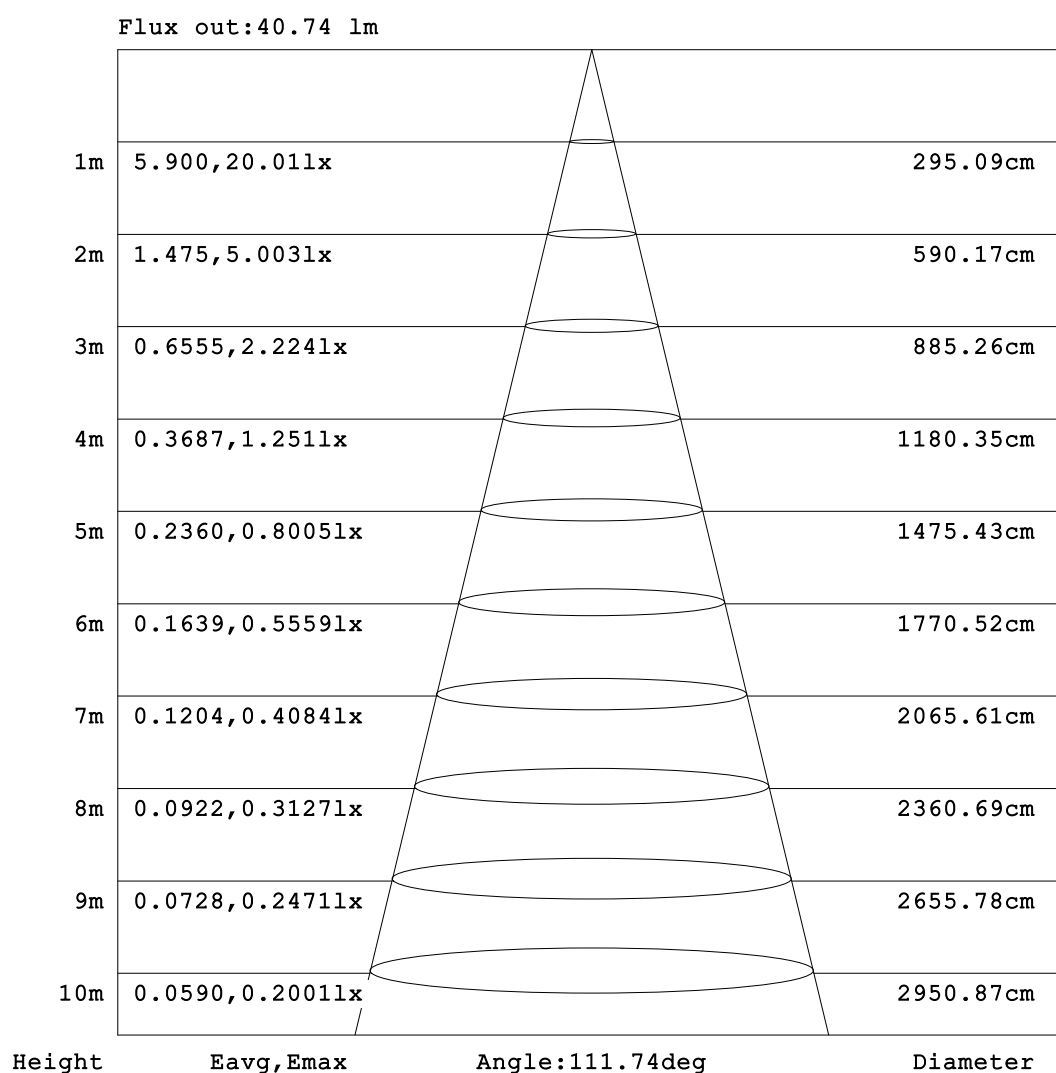


C Range: 0 - 360DEG
C Interval: 30.0DEG
Test Speed: HIGH
Temperature:25.3℃
Operators:
Test Date:2025-03-12

γ Range: 0 - 180DEG
γ Interval: 1.0DEG
Test System:EVERFINE GO-2000B_V1 SYSTEM V2.00.488
Humidity:65.0%
Test Distance:6.360m [K=1.0000]
Remarks:

AAI Figure

Test:U:24.00V I:0.2378A P:5.707W PF:1.000 Freq:0Hz Lamp Flux:60.514x1 lm		
NAME: SF16-24V-5050-70-DMX-RGBW(4000K)-R	TYPE:	WEIGHT:
SPEC.:	DIM.: Length=1m	SERIAL No.:
MFR.: OLympia lighting	SUR.:	Shielding Angle:



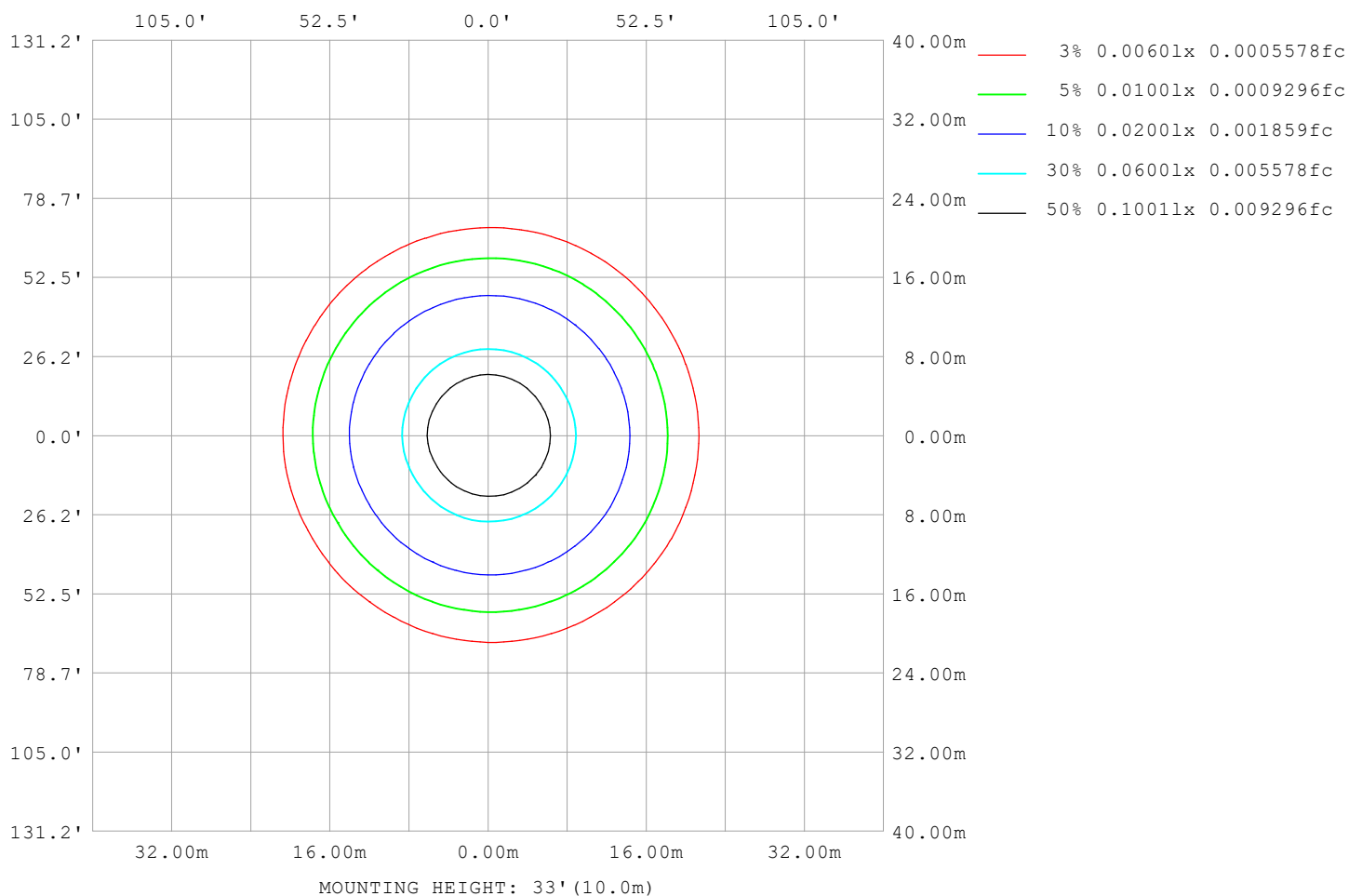
Note:The Curves indicate the illuminated area and the average illumination when the luminaire is at different distance.

C Range: 0 - 360DEG
C Interval: 30.0DEG
Test Speed: HIGH
Temperature:25.3℃
Operators:
Test Date:2025-03-12

γ Range: 0 - 180DEG
γ Interval: 1.0DEG
Test System:EVERFINE GO-2000B_V1 SYSTEM V2.00.488
Humidity:65.0%
Test Distance:6.360m [K=1.0000]
Remarks:

ISOLUX DIAGRAM

Test:U:24.00V I:0.2378A P:5.707W PF:1.000 Freq:0Hz Lamp Flux:60.514x1 lm		
NAME: SF16-24V-5050-70-DMX-RGBW(4000K)-R	TYPE:	WEIGHT:
SPEC.:	DIM.: Length=1m	SERIAL No.:
MFR.: OLympia lighting	SUR.:	Shielding Angle:



C Range: 0 - 360DEG
C Interval: 30.0DEG
Test Speed: HIGH
Temperature: 25.3°C
Operators:
Test Date: 2025-03-12

γ Range: 0 - 180DEG
γ Interval: 1.0DEG
Test System: EVERFINE GO-2000B_V1 SYSTEM V2.00.488
Humidity: 65.0%
Test Distance: 6.360m [K=1.0000]
Remarks:

LED Avg.L Report

Test:U:24.00V I:0.2378A P:5.707W PF:1.000 Freq:0Hz Lamp Flux:60.514x1 lm		
NAME: SF16-24V-5050-70-DMX-RGBW(4000K)-R	TYPE:	WEIGHT:
SPEC.:	DIM.: Length=1m	SERIAL No.:
MFR.: OLympia lighting	SUR.:	Shielding Angle:

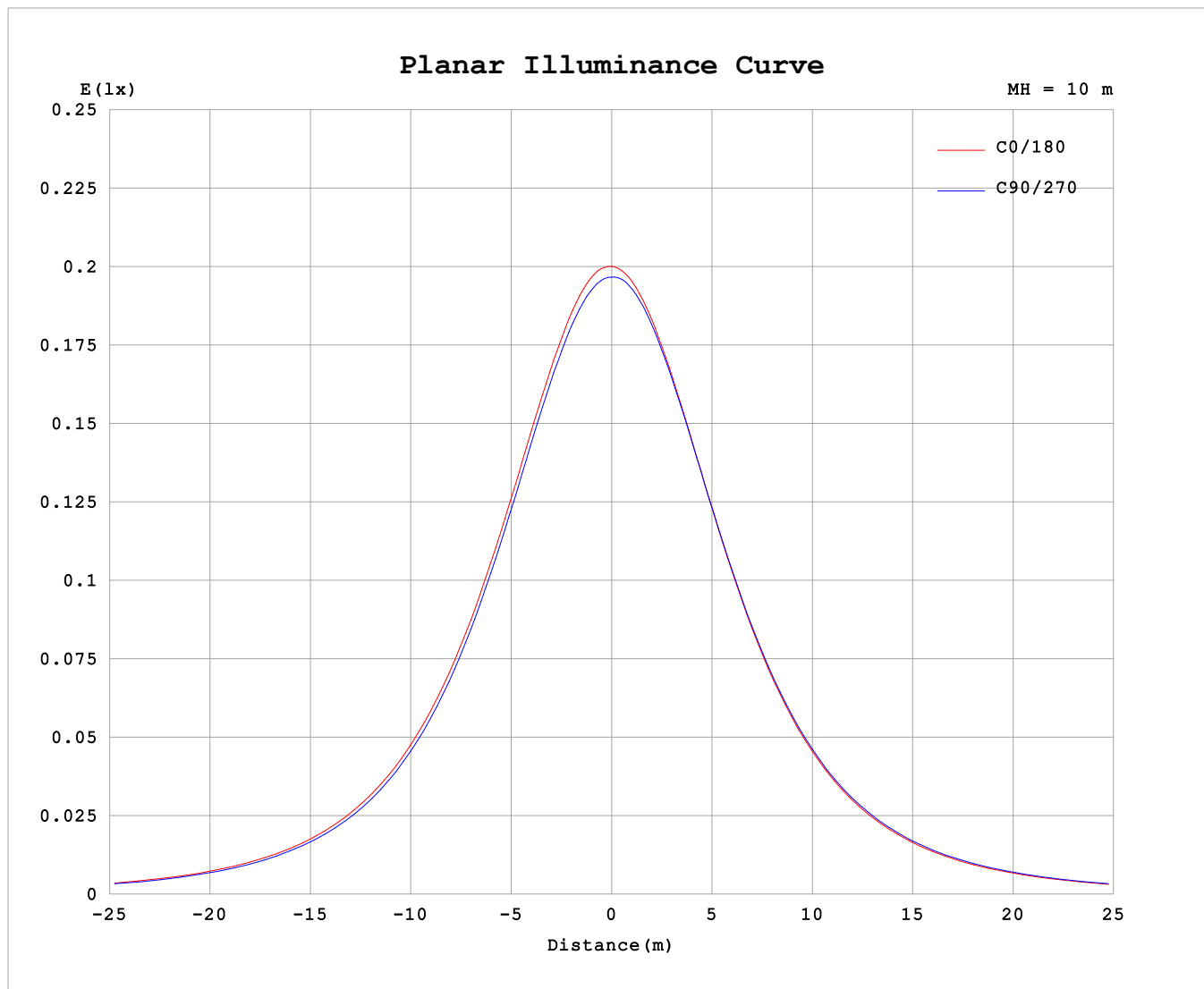
AvgL	cd/m2
L_0~180 (65) av	1055
L_0~180 (75) av	1039
L_0~180 (85) av	1149
L_90~270 (65) av	1062
L_90~270 (75) av	1051
L_90~270 (85) av	1110
L_45 (65) av	1060
L_45 (75) av	1046
L_45 (85) av	1116

Standard: GB/T 29293-2012

C Range: 0 - 360DEG
C Interval: 30.0DEG
Test Speed: HIGH
Temperature:25.3℃
Operators:
Test Date:2025-03-12

γ Range: 0 - 180DEG
γ Interval: 1.0DEG
Test System:EVERFINE GO-2000B_V1 SYSTEM V2.00.488
Humidity:65.0%
Test Distance:6.360m [K=1.0000]
Remarks:

Planar Illuminance Curve



C Range: 0 - 360DEG
C Interval: 30.0DEG
Test Speed: HIGH
Temperature: 25.3 °C
Operators:
Test Date: 2025-03-12

γ Range: 0 - 180DEG
 γ Interval: 1.0DEG
Test System: EVERFINE GO-2000B_V1 SYSTEM V2.00.488
Humidity: 65.0%
Test Distance: 6.360m [K=1.0000]
Remarks:

LUMINOUS DISTRIBUTION INTENSITY DATA

Test:U:24.00V I:0.2378A P:5.707W PF:1.000 Freq:0Hz Lamp Flux:60.514x1 lm																	
NAME: SF16-24V-5050-70-DMX-RGBW(4000K)-R									TYPE:			WEIGHT:					
SPEC.:									DIM.: Length=1m			SERIAL No.:					
MFR.: OLYMPIA lighting									SUR.:			Shielding Angle:					

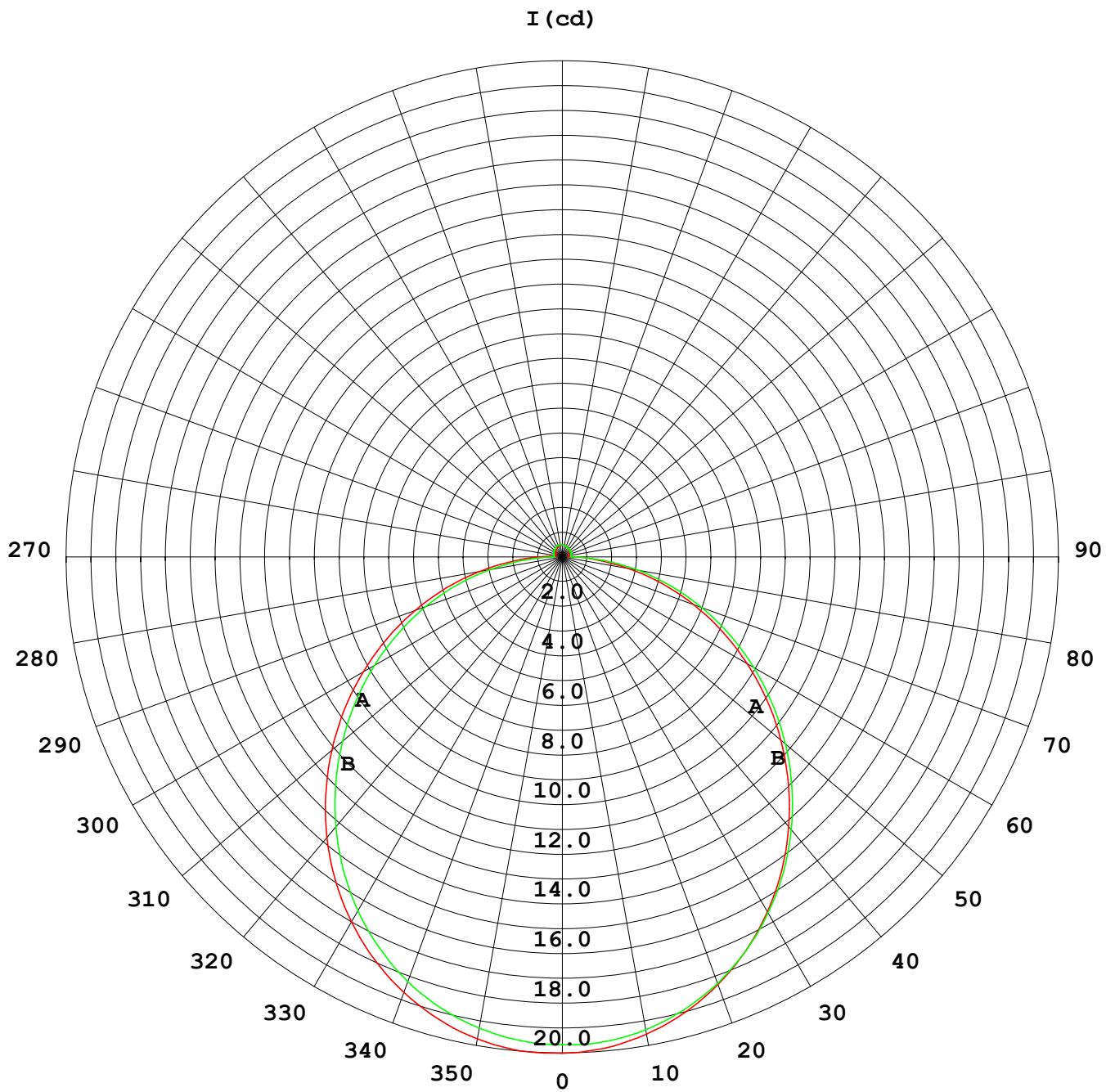
Table--1

UNIT: cd

C (DEG) γ (DEG)	0	30	60	90	120	150	180	210	240	270	300	330						
0	19.7	19.7	19.7	19.7	19.7	19.7	19.7	19.7	19.7	19.7	19.7	19.7						
5	19.7	19.7	19.7	19.7	19.6	19.6	19.6	19.6	19.6	19.7	19.7	19.7						
10	19.5	19.5	19.4	19.4	19.3	19.3	19.3	19.3	19.4	19.4	19.5	19.5						
15	19.0	19.0	19.0	18.9	18.8	18.8	18.8	18.8	18.9	19.0	19.0	19.1						
20	18.4	18.4	18.4	18.3	18.2	18.1	18.1	18.2	18.3	18.4	18.4	18.5						
25	17.7	17.7	17.6	17.5	17.4	17.3	17.3	17.3	17.5	17.6	17.7	17.7						
30	16.8	16.8	16.7	16.5	16.4	16.3	16.3	16.4	16.5	16.6	16.8	16.8						
35	15.7	15.7	15.6	15.5	15.3	15.2	15.2	15.3	15.4	15.6	15.8	15.8						
40	14.6	14.6	14.4	14.3	14.1	14.0	14.0	14.1	14.2	14.4	14.6	14.7						
45	13.3	13.3	13.1	13.0	12.8	12.7	12.7	12.8	13.0	13.1	13.3	13.4						
50	12.0	12.0	11.8	11.6	11.4	11.3	11.3	11.4	11.6	11.8	12.0	12.1						
55	10.6	10.6	10.4	10.2	9.98	9.90	9.93	10.00	10.2	10.4	10.6	10.7						
60	9.15	9.14	8.97	8.78	8.54	8.45	8.48	8.55	8.75	8.94	9.16	9.24						
65	7.69	7.68	7.51	7.33	7.08	6.99	7.02	7.09	7.29	7.48	7.70	7.78						
70	6.23	6.22	6.05	5.88	5.61	5.52	5.56	5.62	5.81	6.01	6.23	6.32						
75	4.78	4.75	4.58	4.43	4.16	4.07	4.10	4.17	4.35	4.55	4.76	4.87						
80	3.32	3.28	3.11	2.94	2.73	2.63	2.66	2.73	2.91	3.10	3.32	3.42						
85	1.95	1.84	1.67	1.53	1.31	1.31	1.36	1.37	1.48	1.67	1.89	2.00						
90	0.91	0.74	0.51	0.36	0.45	0.54	0.57	0.58	0.47	0.39	0.68	0.92						
95	0.33	0.27	0.33	0.36	0.34	0.31	0.24	0.28	0.33	0.35	0.33	0.34						
100	0.28	0.27	0.33	0.37	0.34	0.33	0.26	0.28	0.35	0.35	0.35	0.30						
105	0.28	0.29	0.35	0.38	0.35	0.35	0.28	0.29	0.37	0.37	0.35	0.29						
110	0.29	0.31	0.36	0.39	0.37	0.36	0.30	0.31	0.38	0.38	0.37	0.29						
115	0.31	0.34	0.37	0.40	0.37	0.38	0.31	0.33	0.39	0.39	0.38	0.31						
120	0.33	0.36	0.38	0.41	0.38	0.39	0.33	0.34	0.40	0.39	0.39	0.32						
125	0.36	0.39	0.39	0.43	0.39	0.41	0.35	0.35	0.41	0.40	0.40	0.34						
130	0.37	0.40	0.40	0.43	0.40	0.42	0.37	0.36	0.43	0.41	0.41	0.35						
135	0.38	0.42	0.41	0.44	0.42	0.43	0.38	0.38	0.43	0.42	0.42	0.36						
140	0.40	0.43	0.42	0.45	0.42	0.44	0.40	0.39	0.44	0.42	0.43	0.37						
145	0.41	0.44	0.44	0.47	0.44	0.45	0.42	0.40	0.45	0.43	0.43	0.38						
150	0.42	0.46	0.46	0.49	0.46	0.47	0.43	0.42	0.46	0.44	0.44	0.40						
155	0.44	0.47	0.47	0.50	0.47	0.48	0.45	0.43	0.48	0.45	0.47	0.41						
160	0.46	0.48	0.48	0.50	0.47	0.49	0.48	0.45	0.48	0.46	0.47	0.43						
165	0.47	0.49	0.49	0.50	0.48	0.50	0.48	0.46	0.50	0.47	0.49	0.45						
170	0.47	0.50	0.49	0.50	0.49	0.50	0.49	0.48	0.50	0.48	0.49	0.47						
175	0.48	0.50	0.49	0.50	0.50	0.50	0.49	0.49	0.50	0.49	0.50	0.49						
180	0.48	0.50	0.50	0.50	0.50	0.50	0.49	0.49	0.50	0.50	0.50	0.50						

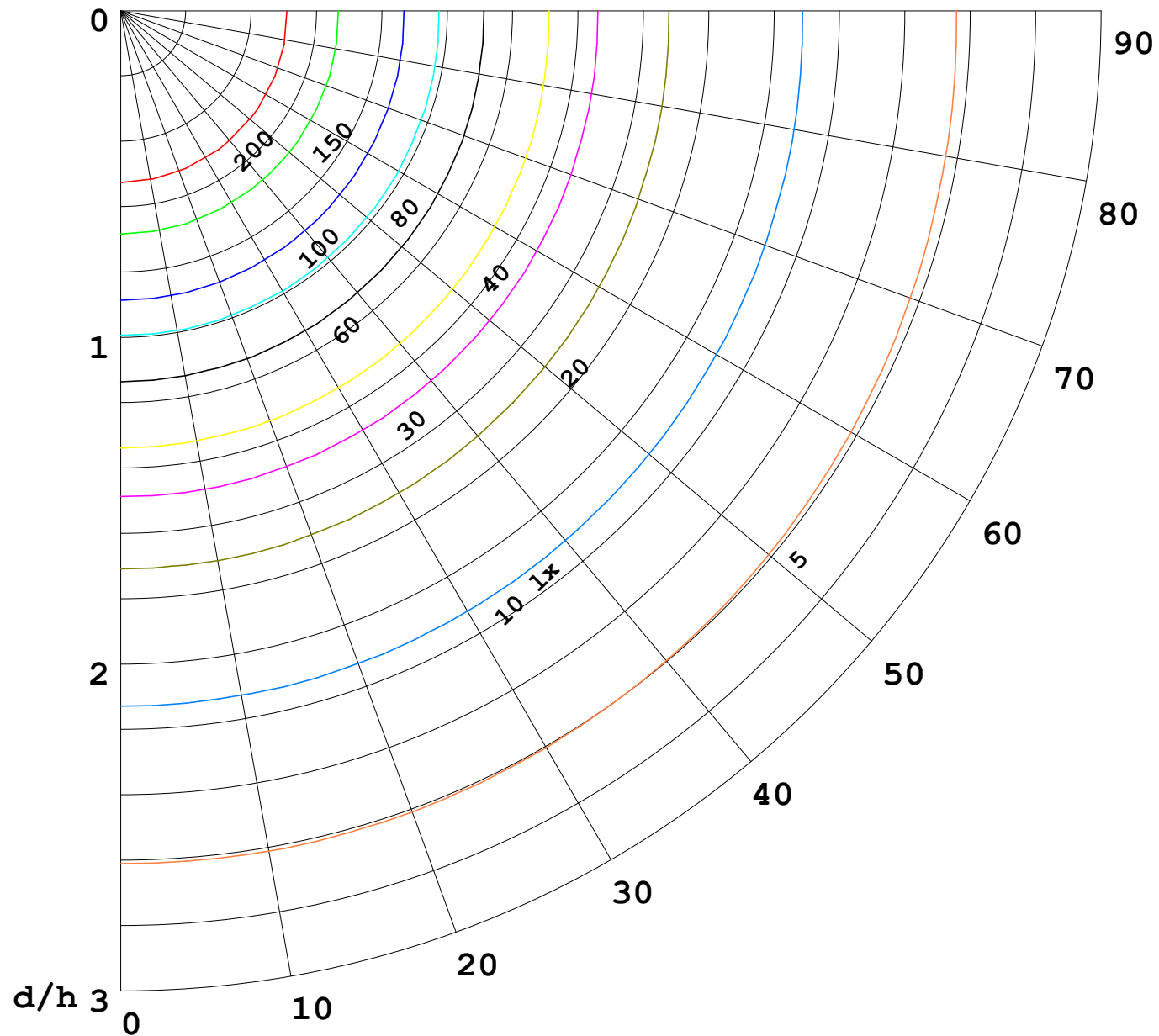
C Range: 0 - 360DEG
C Interval: 30.0DEG
Test Speed: HIGH
Temperature:25.3℃
Operators:
Test Date:2025-03-12

γ Range: 0 - 180DEG
γ Interval: 1.0DEG
Test System:EVERFINE GO-2000B_V1 SYSTEM V2.00.488
Humidity:65.0%
Test Distance:6.360m [K=1.0000]
Remarks:



1000 lm

$\kappa = 1$



F = 1000 lm
 K = 0.7
 Hcc = 0.8 m
 Hfc = 0.0 m
 Eave = 100 lx

	Pcc	Pw	Pfc
—————	70	50	30
—————	50	30	20

