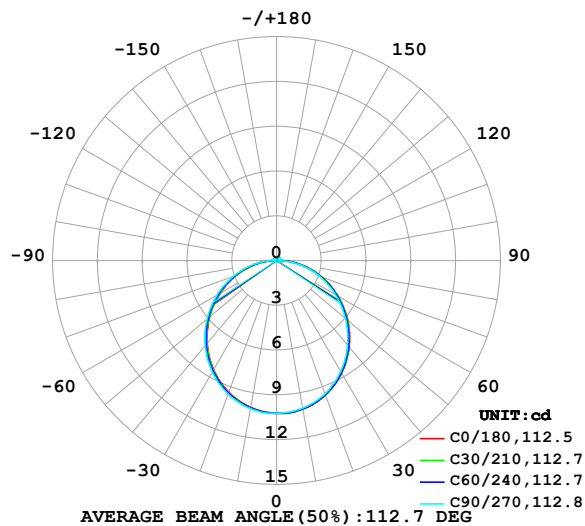


LUMINAIRE PHOTOMETRIC TEST REPORT

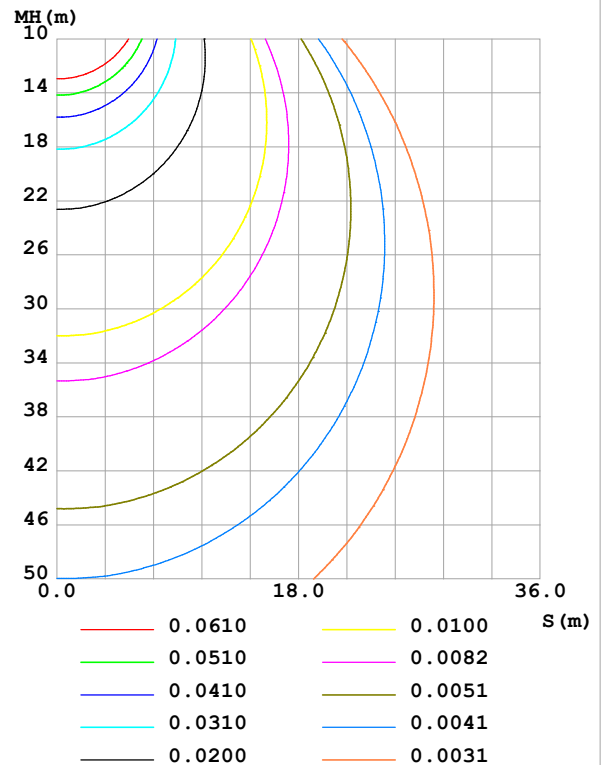
Test:U:24.00V I:0.2376A P:5.702W PF:1.000 Freq:0Hz Lamp Flux:31.2704x1 lm		
NAME: SF16-24V-5050-70-DMX-RGBW(4000K)-B	TYPE:	WEIGHT:
SPEC.:	DIM.: Length=1m	SERIAL No.:
MFR.: OLympia lighting	SUR.:	Shielding Angle:

DATA OF LAMP		PHOTOMETRIC DATA				Eff: 5.48 lm/W
MODEL	5050	I _{max} (cd)	10.25	S/MH(C0/180)	1.23	
NOMINAL POWER(W)		LOR(%)	100.0	S/MH(C90/270)	1.25	
RATED VOLTAGE(V)	24	TOTAL FLUX(lm)	31.270	η UP,DN(C0-180)	2.0,48.1	
NOMINAL FLUX(lm)	31.2704	CIE CLASS	DIRECT	η UP,DN(C180-360)	1.9,48.0	
LAMPS INSIDE	1	η up (%)	3.9	CIBSE SHR NOM	1.25	
TEST VOLTAGE(V)		η down (%)	96.1	CIBSE SHR MAX	1.35	

LUMINOUS INTENSITY DISTRIBUTION DIAGRAM



C0 PLANE ISOLUX DIAGRAM (UNIT:lx)



C Range: 0 - 360DEG
C Interval: 30.0DEG
Test Speed: HIGH
Temperature:25.3℃
Operators:
Test Date:2025-03-12

γ Range: 0 - 180DEG
γ Interval: 1.0DEG
Test System:EVERFINE GO-2000B_V1 SYSTEM V2.00.488
Humidity:65.0%
Test Distance:6.360m [K=1.0000]
Remarks:

ZONAL FLUX DIAGRAM

ZONAL FLUX DIAGRAM:

γ	C0	C45	C90	C135	C180	C225	C270	C315	γ	Φ zone	Φ total	%lum, lamp
10	10.11	10.09	10.04	10.01	9.989	10.02	10.07	10.09	0- 10	0.9687	0.9687	3.1,3.1
20	9.583	9.560	9.489	9.416	9.380	9.429	9.517	9.576	10- 20	2.770	3.739	12,12
30	8.712	8.681	8.586	8.482	8.444	8.503	8.622	8.703	20- 30	4.185	7.924	25.3,25.3
40	7.572	7.520	7.396	7.279	7.246	7.320	7.453	7.560	30- 40	5.027	12.95	41.4,41.4
50	6.216	6.158	6.018	5.886	5.860	5.938	6.085	6.213	40- 50	5.209	18.16	58.1,58.1
60	4.741	4.688	4.552	4.387	4.377	4.455	4.609	4.743	50- 60	4.755	22.91	73.3,73.3
70	3.223	3.173	3.053	2.877	2.859	2.938	3.090	3.228	60- 70	3.775	26.69	85.4,85.4
80	1.719	1.650	1.532	1.384	1.369	1.447	1.598	1.725	70- 80	2.428	29.12	93.1,93.1
90	0.4743	0.3320	0.2021	0.2583	0.2938	0.2670	0.1970	0.4068	80- 90	0.9374	30.06	96.1,96.1
100	0.1472	0.1573	0.1992	0.1731	0.1328	0.1573	0.1703	0.1601	90-100	0.2051	30.26	96.8,96.8
110	0.1443	0.1703	0.2021	0.1803	0.1530	0.1689	0.1819	0.1645	100-110	0.1758	30.44	97.3,97.3
120	0.1587	0.1862	0.2165	0.1919	0.1675	0.1833	0.1877	0.1731	110-120	0.1758	30.61	97.9,97.9
130	0.1818	0.2006	0.2194	0.2048	0.1876	0.1949	0.1934	0.1876	120-130	0.1707	30.78	98.4,98.4
140	0.1934	0.2136	0.2367	0.2164	0.2050	0.2064	0.2021	0.1976	130-140	0.1569	30.94	98.9,98.9
150	0.2049	0.2309	0.2512	0.2279	0.2194	0.2151	0.2165	0.2092	140-150	0.1352	31.07	99.4,99.4
160	0.2222	0.2425	0.2512	0.2351	0.2367	0.2309	0.2194	0.2222	150-160	0.1054	31.18	99.7,99.7
170	0.2338	0.2439	0.2483	0.2409	0.2367	0.2396	0.2367	0.2380	160-170	0.0670	31.25	99.9,99.9
180	0.2396	0.2439	0.2483	0.2438	0.2367	0.2454	0.2454	0.2438	170-180	0.0230	31.27	100,100
DEG	LUMINOUS INTENSITY:cd									UNIT:lm		

Conical surface Flux(90deg): 15.574 lm

%lum = 49.8%

%lamp = 49.8%

Conical surface Flux(130deg): 24.951 lm

%lum = 79.8%

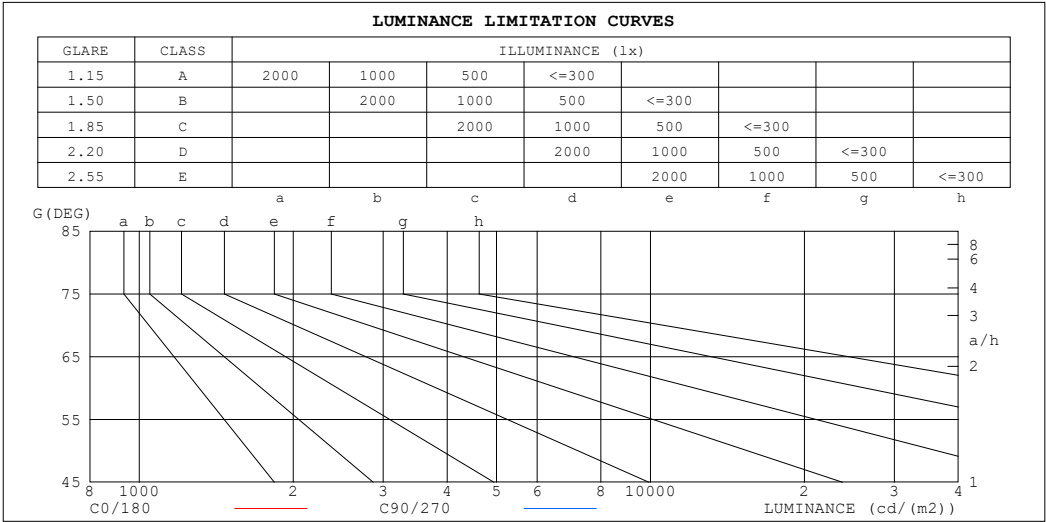
%lamp = 79.8%

C Range: 0 - 360DEG
 C Interval: 30.0DEG
 Test Speed: HIGH
 Temperature:25.3℃
 Operators:
 Test Date:2025-03-12

γ Range: 0 - 180DEG
 γ Interval: 1.0DEG
 Test System:EVERFINE GO-2000B_V1 SYSTEM V2.00.488
 Humidity:65.0%
 Test Distance:6.360m [K=1.0000]
 Remarks:

LUMINANCE LIMITATION CURVES

Test:U:24.00V I:0.2376A P:5.702W PF:1.000 Freq:0Hz Lamp Flux:31.2704x1 lm		
NAME: SF16-24V-5050-70-DMX-RGBW(4000K)-B	TYPE:	WEIGHT:
SPEC.:	DIM.: Length=1m	SERIAL No.:
MFR.: OLympia lighting	SUR.:	Shielding Angle:



LUMINANCE cd/(m2)		
G (DEG)	C0/180	C90/270
85	680	567
80	600	534
75	577	541
70	571	541
65	571	545
60	575	552
55	580	558
50	586	567
45	592	576

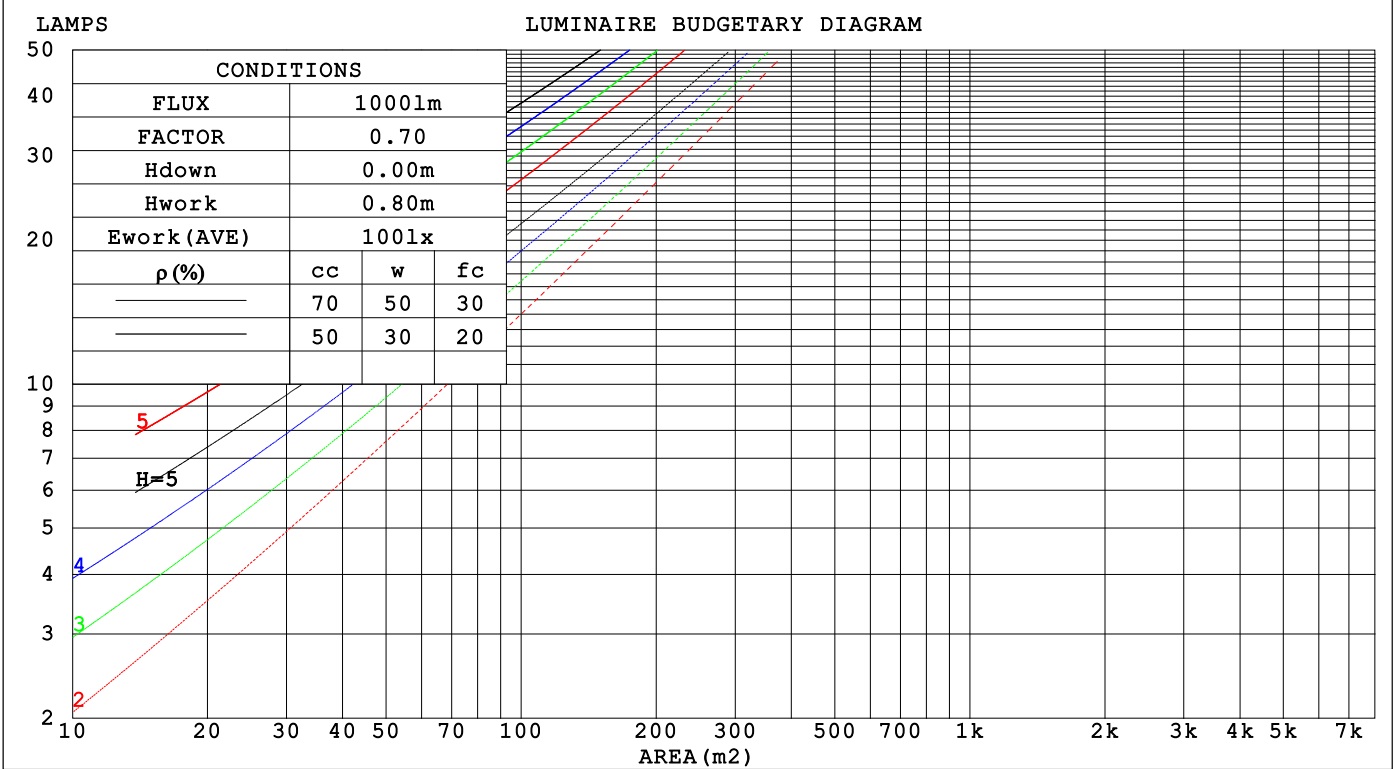
C Range: 0 - 360DEG
C Interval: 30.0DEG
Test Speed: HIGH
Temperature:25.3℃
Operators:
Test Date:2025-03-12

γ Range: 0 - 180DEG
γ Interval: 1.0DEG
Test System:EVERFINE GO-2000B_V1 SYSTEM V2.00.488
Humidity:65.0%
Test Distance:6.360m [K=1.0000]
Remarks:

CU AND LUMINAIRE BUDGETARY ESTIMATE DIAGRAM

Test:U:24.00V I:0.2376A P:5.702W PF:1.000 Freq:0Hz		
Lamp Flux:31.2704x1 lm		
NAME: SF16-24V-5050-70-DMX-RGBW(4000K)-B	TYPE:	WEIGHT:
SPEC.:	DIM.: Length=1m	SERIAL No.:
MFR.: OLYMPIA lighting	SUR.:	Shielding Angle:

pcc	80%			70%			50%			30%			10%			0
pw	50%	30%	10%	50%	30%	10%	50%	30%	10%	50%	30%	10%	50%	30%	10%	0
pfc	20%			20%			20%			20%			20%			0
RCR	RCR:Room Cavity Ratio															



C Range: 0 - 360DEG
C Interval: 30.0DEG
Test Speed: HIGH
Temperature:25.3℃
Operators:
Test Date:2025-03-12

γ Range: 0 - 180DEG
γ Interval: 1.0DEG
Test System:EVERFINE GO-2000B_V1 SYSTEM V2.00.488
Humidity:65.0%
Test Distance:6.360m [K=1.0000]
Remarks:

WEC AND CCEC

Test:U:24.00V I:0.2376A P:5.702W PF:1.000 Freq:0Hz Lamp Flux:31.2704x1 lm		
NAME: SF16-24V-5050-70-DMX-RGBW(4000K)-B	TYPE:	WEIGHT:
SPEC.:	DIM.: Length=1m	SERIAL No.:
MFR.: OLYMPIA lighting	SUR.:	Shielding Angle:

pcc	80%			70%			50%			30%			10%			0														
pw	50%	30%	10%	50%	30%	10%	50%	30%	10%	50%	30%	10%	50%	30%	10%	0														
pfc	20%			20%			20%			20%			20%			0														
RCR	RCR:Room Cavity Ratio															Wall Exitance Coefficients(WEC)														
0.0																														
1.0	.326	.185	.059	.317	.181	.058	.302	.173	.055	.288	.166	.053	.274	.159	.051															
2.0	.301	.165	.051	.293	.161	.050	.279	.155	.048	.267	.150	.047	.255	.144	.045															
3.0	.275	.147	.044	.269	.144	.043	.257	.139	.042	.245	.134	.041	.235	.130	.040															
4.0	.253	.131	.039	.247	.129	.038	.236	.125	.037	.226	.121	.037	.216	.117	.036															
5.0	.233	.119	.034	.227	.117	.034	.218	.113	.033	.208	.110	.033	.200	.107	.032															
6.0	.215	.108	.031	.211	.106	.031	.202	.103	.030	.193	.101	.030	.186	.098	.029															
7.0	.200	.099	.028	.196	.097	.028	.188	.095	.027	.180	.092	.027	.173	.090	.026															
8.0	.186	.091	.026	.183	.090	.025	.175	.088	.025	.169	.085	.025	.162	.083	.024															
9.0	.174	.084	.024	.171	.083	.023	.165	.081	.023	.158	.079	.023	.153	.077	.022															
10.0	.164	.079	.022	.161	.078	.022	.155	.076	.021	.149	.074	.021	.144	.072	.021															

pcc	80%			70%			50%			30%			10%			0
pw	50%	30%	10%	50%	30%	10%	50%	30%	10%	50%	30%	10%	50%	30%	10%	0
pfc	20%			20%			20%			20%			20%			0
RCR	RCR:Room Cavity Ratio						Ceiling Cavity Exitance Coefficients (CCEC)									
0.0	.220	.220	.220	.188	.188	.188	.128	.128	.128	.074	.074	.074	.024	.024	.024	
1.0	.211	.186	.163	.181	.160	.140	.124	.110	.097	.071	.063	.056	.023	.020	.018	
2.0	.203	.162	.127	.174	.139	.110	.119	.096	.077	.069	.056	.045	.022	.018	.015	
3.0	.196	.145	.104	.168	.125	.090	.115	.087	.063	.067	.051	.037	.021	.016	.012	
4.0	.188	.131	.088	.161	.114	.077	.111	.079	.054	.064	.046	.032	.021	.015	.010	
5.0	.181	.121	.077	.155	.105	.067	.107	.073	.047	.062	.043	.028	.020	.014	.009	
6.0	.173	.113	.069	.149	.098	.060	.103	.068	.043	.060	.040	.025	.019	.013	.008	
7.0	.166	.106	.064	.143	.092	.055	.099	.064	.039	.057	.038	.023	.019	.012	.008	
8.0	.160	.100	.059	.138	.087	.052	.095	.061	.037	.055	.036	.022	.018	.012	.007	
9.0	.154	.095	.056	.132	.083	.049	.092	.058	.035	.053	.034	.021	.017	.011	.007	
10.0	.148	.091	.053	.128	.079	.046	.089	.056	.033	.052	.033	.020	.017	.011	.007	

C Range: 0 - 360DEG
C Interval: 30.0DEG
Test Speed: HIGH
Temperature:25.3℃
Operators:
Test Date:2025-03-12

γ Range: 0 - 180DEG
γ Interval: 1.0DEG
Test System:EVERFINE GO-2000B_V1 SYSTEM V2.00.488
Humidity:65.0%
Test Distance:6.360m [K=1.0000]
Remarks:

UGR(Unified Glare Rating) Table

Test:U:24.00V I:0.2376A P:5.702W PF:1.000 Freq:0Hz Lamp Flux:31.2704x1 lm											
NAME: SF16-24V-5050-70-DMX-RGBW(4000K)-B						TYPE:		WEIGHT:			
SPEC.:						DIM.: Length=1m		SERIAL No.:			
MFR.: OLympia lighting						SUR.:		Shielding Angle:			
ceiling/cavity	0.7	0.7	0.5	0.5	0.3	0.7	0.7	0.5	0.5	0.3	
walls	0.5	0.3	0.5	0.3	0.3	0.5	0.3	0.5	0.3	0.3	
working plane	0.2	0.2	0.2	0.2	0.2	0.2	0.2	0.2	0.2	0.2	
Room dimensions		Viewed crosswise					Viewed endwise				
x = 2H y = 2H	2H	22.8	24.2	23.1	24.5	24.8	22.6	24.1	22.9	24.4	24.6
	3H	24.5	25.9	24.9	26.2	26.5	24.3	25.7	24.6	26.0	26.3
	4H	25.3	26.6	25.7	26.9	27.3	25.0	26.3	25.4	26.7	27.0
	6H	26.0	27.2	26.4	27.5	27.9	25.7	26.9	26.0	27.2	27.6
	8H	26.3	27.4	26.7	27.8	28.2	25.9	27.1	26.3	27.4	27.8
	12H	26.5	27.6	26.9	28.0	28.4	26.1	27.2	26.5	27.6	28.0
4H	2H	23.4	24.7	23.8	25.0	25.4	23.3	24.6	23.7	24.9	25.2
	3H	25.3	26.5	25.7	26.8	27.2	25.2	26.3	25.6	26.7	27.1
	4H	26.3	27.3	26.7	27.7	28.1	26.1	27.1	26.5	27.5	27.9
	6H	27.1	28.0	27.6	28.5	28.9	26.8	27.8	27.3	28.2	28.6
	8H	27.5	28.3	27.9	28.8	29.2	27.1	28.0	27.6	28.4	28.9
	12H	27.8	28.6	28.3	29.0	29.5	27.4	28.2	27.9	28.7	29.1
8H	4H	26.6	27.5	27.1	27.9	28.4	26.4	27.3	26.9	27.7	28.2
	6H	27.6	28.4	28.1	28.8	29.3	27.4	28.1	27.9	28.6	29.1
	8H	28.1	28.8	28.6	29.3	29.8	27.8	28.5	28.3	29.0	29.5
	12H	28.5	29.1	29.1	29.6	30.2	28.2	28.8	28.7	29.3	29.8
12H	4H	26.6	27.4	27.1	27.9	28.4	26.5	27.3	27.0	27.7	28.2
	6H	27.7	28.4	28.3	28.9	29.4	27.5	28.1	28.0	28.6	29.2
	8H	28.3	28.8	28.8	29.3	29.9	28.0	28.5	28.5	29.1	29.6
Variations with the observer position at spacings(CIE Pub.117):											
S = 1.0H		+ 0.1 / - 0.2					+ 0.1 / - 0.2				
1.5H		+ 0.2 / - 0.3					+ 0.2 / - 0.3				
2.0H		+ 0.1 / - 0.3					+ 0.1 / - 0.3				

CIE Pub.117, 31.27 lm Total Lamp Luminous Flux Correct (8log(F/F0) = -12.0)
Area: 0.0165 m2

C Range: 0 - 360DEG
C Interval: 30.0DEG
Test Speed: HIGH
Temperature:25.3℃
Operators:
Test Date:2025-03-12

γ Range: 0 - 180DEG
γ Interval: 1.0DEG
Test System:EVERFINE GO-2000B_V1 SYSTEM V2.00.488
Humidity:65.0%
Test Distance:6.360m [K=1.0000]
Remarks:

UTILIZATION FACTORS TABLE

Test:U:24.00V I:0.2376A P:5.702W PF:1.000 Freq:0Hz Lamp Flux:31.2704x1 lm		
NAME: SF16-24V-5050-70-DMX-RGBW(4000K)-B	TYPE:	WEIGHT:
SPEC.:	DIM.: Length=1m	SERIAL No.:
MFR.: OLympia lighting	SUR.:	Shielding Angle:

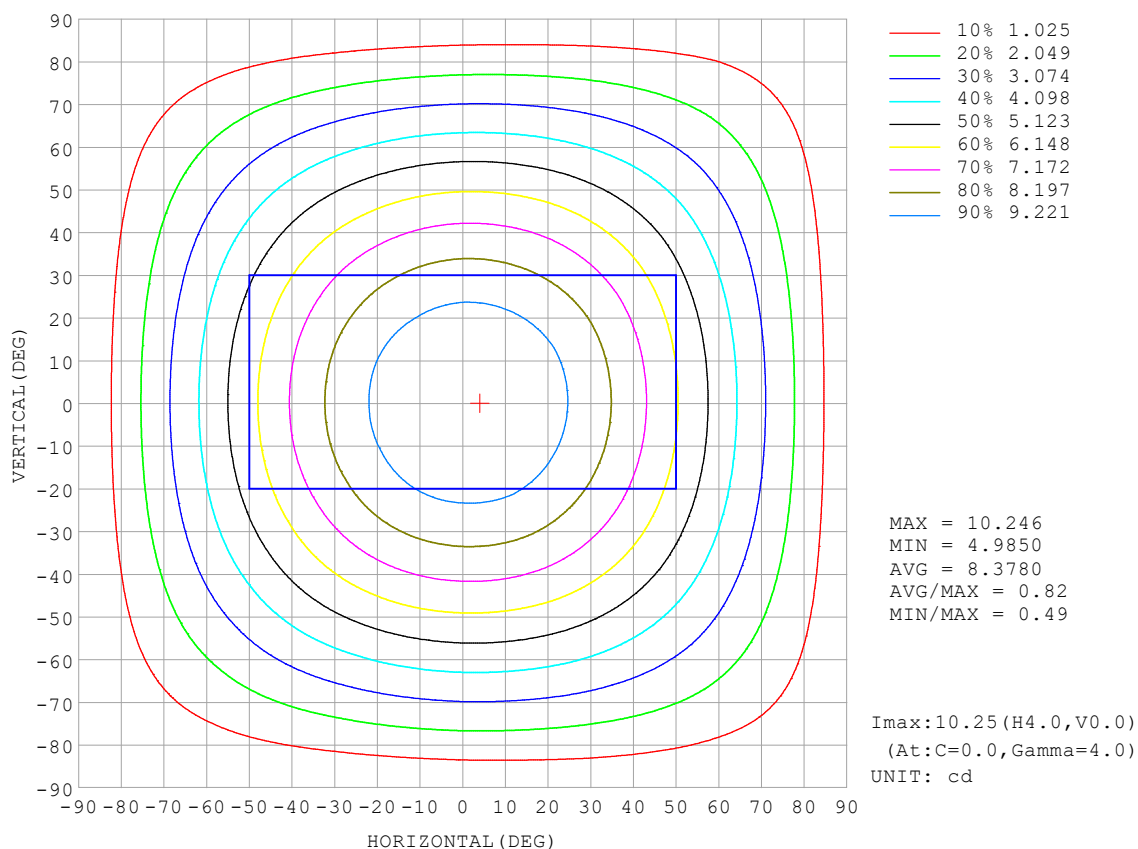
REFLECTANCE										
Ceiling	0.8	0.8	0.8	0.7	0.7	0.7	0.5	0.5	0.5	0
Walls	0.7	0.5	0.3	0.7	0.5	0.3	0.7	0.5	0.3	0
Working plane	0.2	0.2	0.2	0.2	0.2	0.2	0.2	0.2	0.2	0
ROOM INDEX	UTILIZATION FACTORS (PERCENT) $k(RI) \times RCR = 5$									
$k = 0.60$	56	44	37	55	44	37	53	43	37	30
0.80	65	54	46	64	53	46	62	52	45	38
1.00	74	62	55	72	62	54	70	63	54	46
1.25	81	70	62	79	69	62	76	67	61	53
1.50	86	75	68	84	74	68	80	72	66	58
2.00	93	84	77	91	82	76	87	80	74	65
2.50	97	89	82	94	87	81	90	84	79	69
3.00	100	93	87	98	91	86	93	88	83	73
4.00	104	98	93	102	96	92	97	92	88	78
5.00	107	102	97	104	99	95	99	95	92	81
ROOM INDEX	UF (total)									Direct
According to DIN EN 13032-2 2004			Suspended					SHRNOM = 1.25		

C Range: 0 - 360DEG
 C Interval: 30.0DEG
 Test Speed: HIGH
 Temperature: 25.3 °C
 Operators:
 Test Date: 2025-03-12

γ Range: 0 - 180DEG
 γ Interval: 1.0DEG
 Test System: EVERFINE GO-2000B_V1 SYSTEM V2.00.488
 Humidity: 65.0%
 Test Distance: 6.360m [K=1.0000]
 Remarks:

ISOCANDELA DIAGRAM

Test:U:24.00V I:0.2376A P:5.702W PF:1.000 Freq:0Hz Lamp Flux:31.2704x1 lm		
NAME: SF16-24V-5050-70-DMX-RGBW(4000K)-B	TYPE:	WEIGHT:
SPEC.:	DIM.: Length=1m	SERIAL No.:
MFR.: OLympia lighting	SUR.:	Shielding Angle:

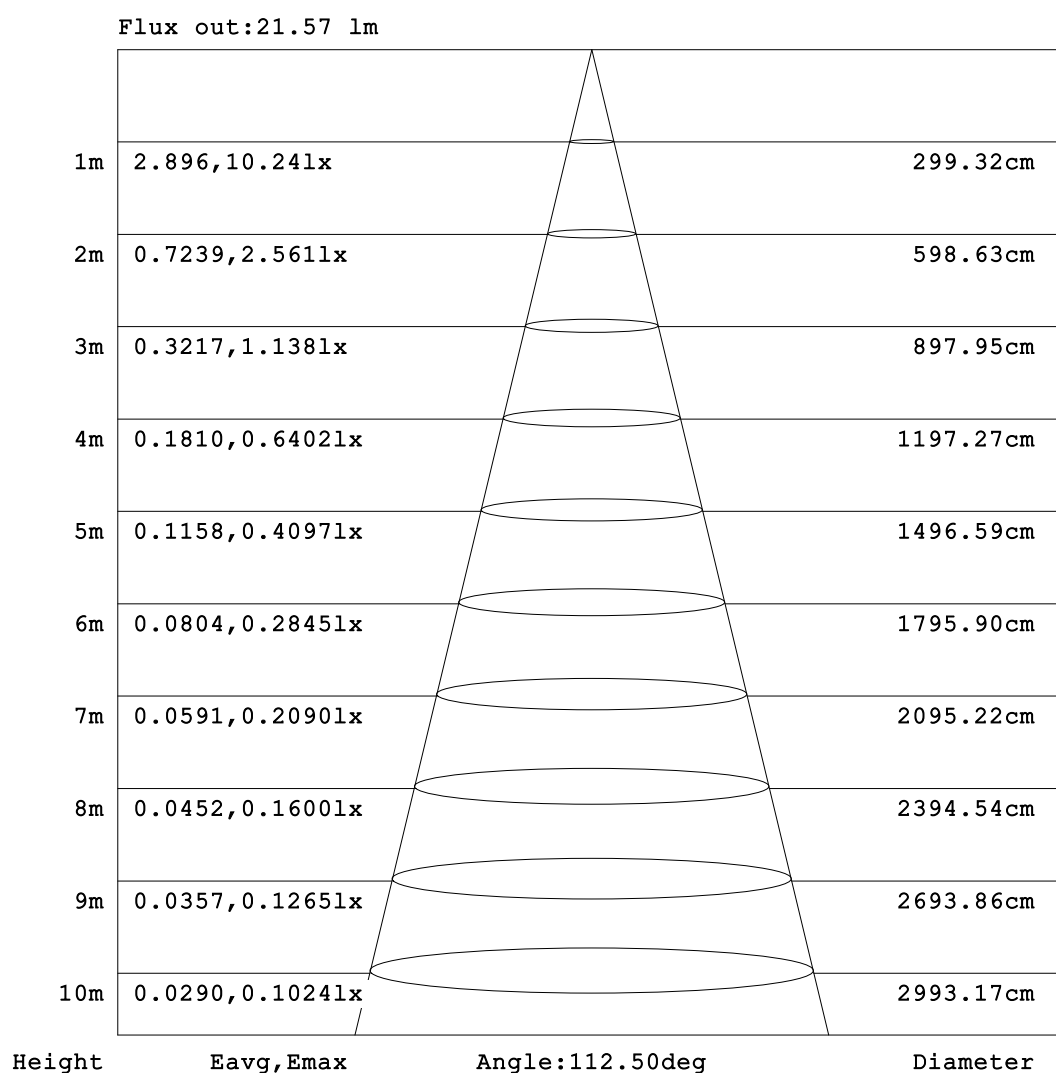


C Range: 0 - 360DEG
C Interval: 30.0DEG
Test Speed: HIGH
Temperature:25.3℃
Operators:
Test Date:2025-03-12

γ Range: 0 - 180DEG
γ Interval: 1.0DEG
Test System:EVERFINE GO-2000B_V1 SYSTEM V2.00.488
Humidity:65.0%
Test Distance:6.360m [K=1.0000]
Remarks:

AAI Figure

Test:U:24.00V I:0.2376A P:5.702W PF:1.000 Freq:0Hz Lamp Flux:31.2704x1 lm		
NAME: SF16-24V-5050-70-DMX-RGBW(4000K)-B	TYPE:	WEIGHT:
SPEC.:	DIM.: Length=1m	SERIAL No.:
MFR.: OLympia lighting	SUR.:	Shielding Angle:



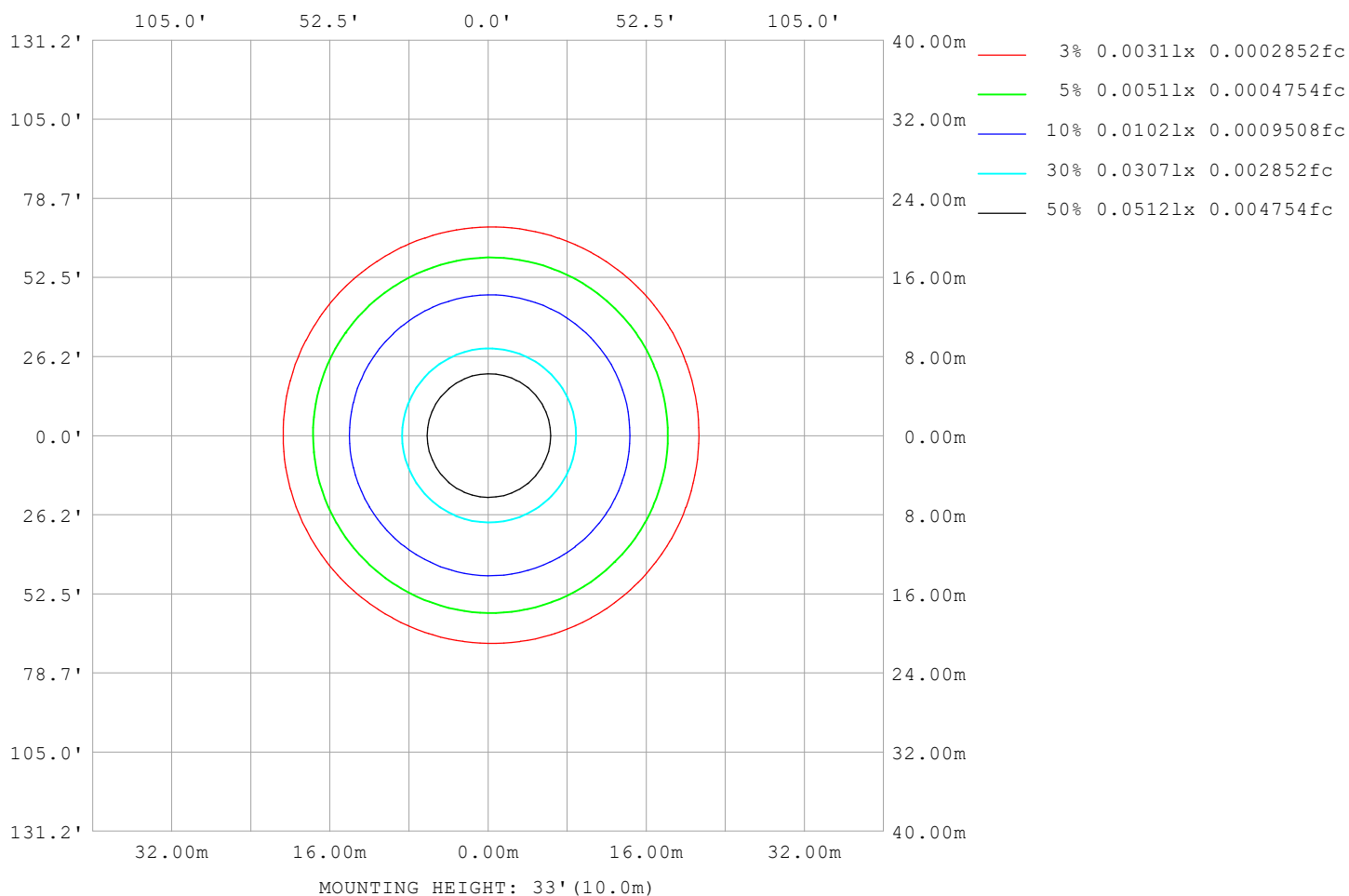
Note:The Curves indicate the illuminated area and the average illumination when the luminaire is at different distance.

C Range: 0 - 360DEG
C Interval: 30.0DEG
Test Speed: HIGH
Temperature:25.3℃
Operators:
Test Date:2025-03-12

γ Range: 0 - 180DEG
γ Interval: 1.0DEG
Test System:EVERFINE GO-2000B_V1 SYSTEM V2.00.488
Humidity:65.0%
Test Distance:6.360m [K=1.0000]
Remarks:

ISOLUX DIAGRAM

Test:U:24.00V I:0.2376A P:5.702W PF:1.000 Freq:0Hz Lamp Flux:31.2704x1 lm		
NAME: SF16-24V-5050-70-DMX-RGBW(4000K)-B	TYPE:	WEIGHT:
SPEC.:	DIM.: Length=1m	SERIAL No.:
MFR.: OLympia lighting	SUR.:	Shielding Angle:



C Range: 0 - 360DEG
C Interval: 30.0DEG
Test Speed: HIGH
Temperature: 25.3°C
Operators:
Test Date: 2025-03-12

γ Range: 0 - 180DEG
γ Interval: 1.0DEG
Test System: EVERFINE GO-2000B_V1 SYSTEM V2.00.488
Humidity: 65.0%
Test Distance: 6.360m [K=1.0000]
Remarks:

LED Avg.L Report

Test:U:24.00V I:0.2376A P:5.702W PF:1.000 Freq:0Hz Lamp Flux:31.2704x1 lm		
NAME: SF16-24V-5050-70-DMX-RGBW(4000K)-B	TYPE:	WEIGHT:
SPEC.:	DIM.: Length=1m	SERIAL No.:
MFR.: OLympia lighting	SUR.:	Shielding Angle:

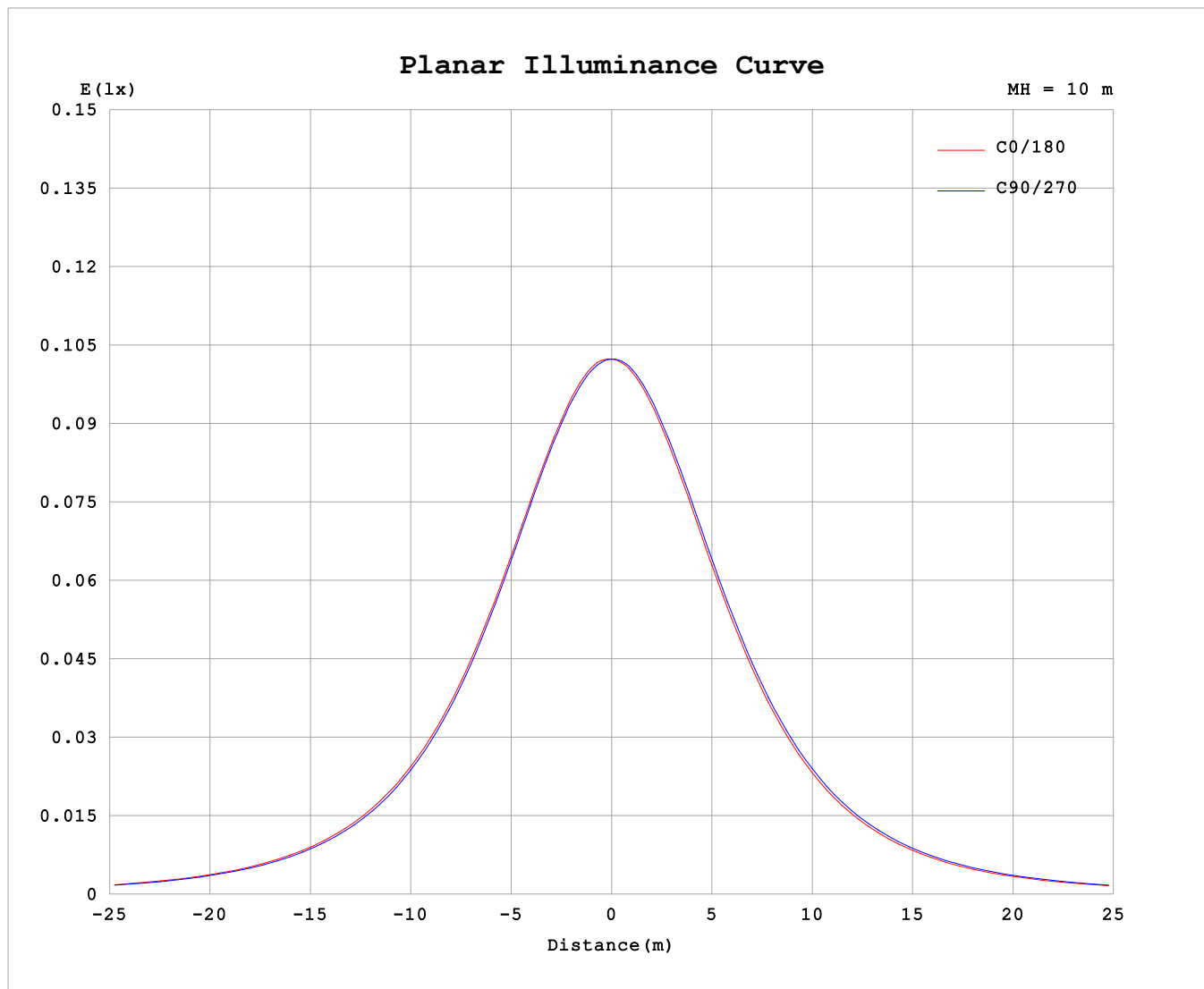
AvgL	cd/m2
L_0~180 (65) av	545
L_0~180 (75) av	535
L_0~180 (85) av	583
L_90~270 (65) av	549
L_90~270 (75) av	544
L_90~270 (85) av	584
L_45 (65) av	547
L_45 (75) av	538
L_45 (85) av	572

Standard: GB/T 29293-2012

C Range: 0 - 360DEG
C Interval: 30.0DEG
Test Speed: HIGH
Temperature:25.3℃
Operators:
Test Date:2025-03-12

γ Range: 0 - 180DEG
γ Interval: 1.0DEG
Test System:EVERFINE GO-2000B_V1 SYSTEM V2.00.488
Humidity:65.0%
Test Distance:6.360m [K=1.0000]
Remarks:

Planar Illuminance Curve



C Range: 0 - 360DEG
C Interval: 30.0DEG
Test Speed: HIGH
Temperature: 25.3 °C
Operators:
Test Date: 2025-03-12

γ Range: 0 - 180DEG
 γ Interval: 1.0DEG
Test System: EVERFINE GO-2000B_V1 SYSTEM V2.00.488
Humidity: 65.0%
Test Distance: 6.360m [K=1.0000]
Remarks:

LUMINOUS DISTRIBUTION INTENSITY DATA

Test:U:24.00V I:0.2376A P:5.702W PF:1.000 Freq:0Hz Lamp Flux:31.2704x1 lm																	
NAME: SF16-24V-5050-70-DMX-RGBW(4000K)-B									TYPE:			WEIGHT:					
SPEC.:									DIM.: Length=1m			SERIAL No.:					
MFR.: OLYMPIA lighting									SUR.:			Shielding Angle:					

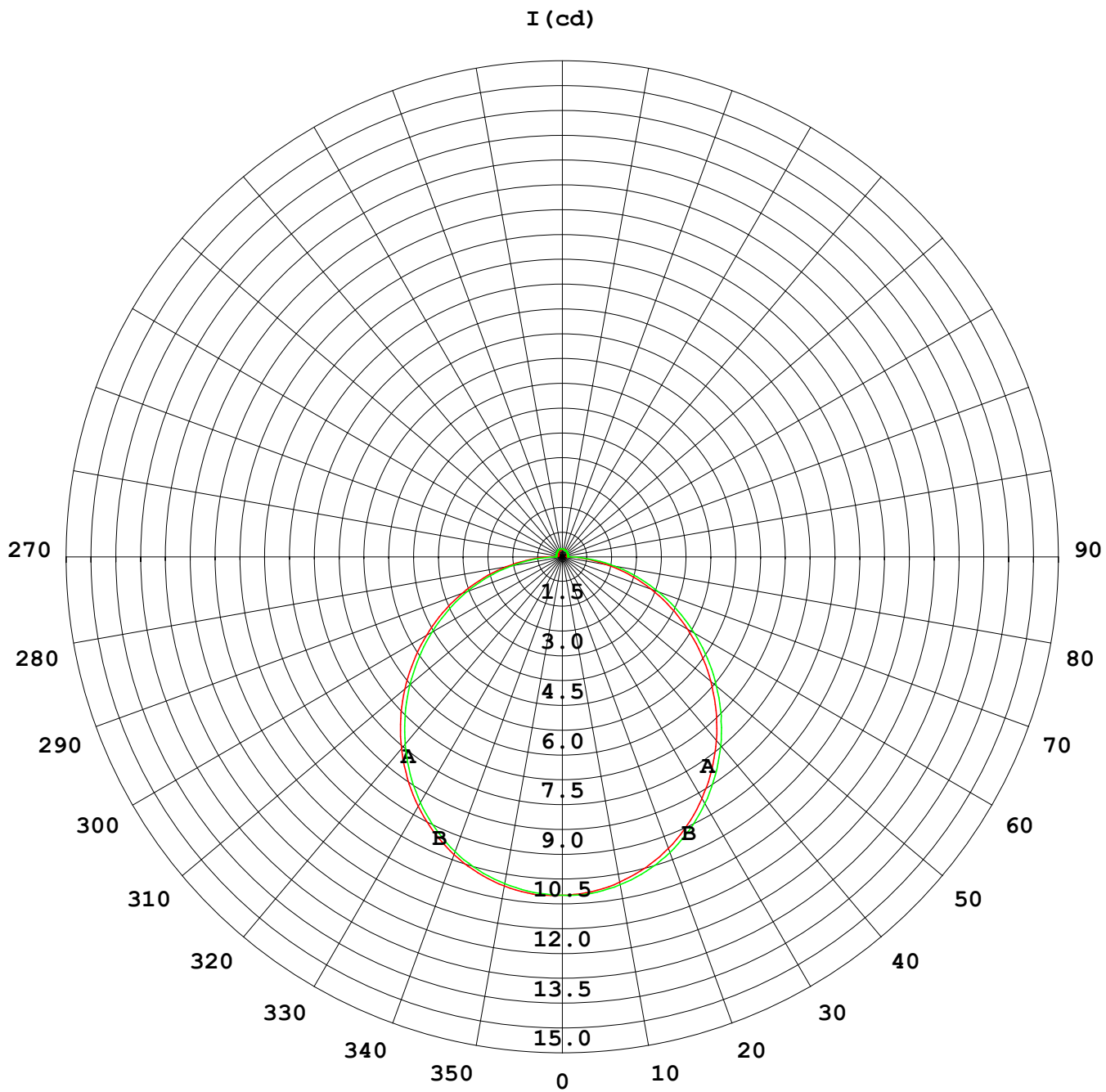
Table--1

UNIT: cd

C (DEG) γ (DEG)	0	30	60	90	120	150	180	210	240	270	300	330						
0	10.2	10.2	10.2	10.2	10.2	10.2	10.2	10.2	10.2	10.2	10.2	10.2						
5	10.2	10.2	10.2	10.2	10.2	10.2	10.2	10.2	10.2	10.2	10.2	10.2						
10	10.1	10.1	10.1	10.0	10.0	9.99	9.99	10.0	10.0	10.1	10.1	10.1						
15	9.89	9.86	9.87	9.81	9.79	9.73	9.73	9.76	9.77	9.84	9.85	9.90						
20	9.58	9.56	9.56	9.49	9.45	9.38	9.38	9.41	9.45	9.52	9.55	9.60						
25	9.19	9.17	9.16	9.08	9.03	8.95	8.95	8.98	9.02	9.11	9.15	9.20						
30	8.71	8.69	8.67	8.59	8.52	8.44	8.44	8.48	8.53	8.62	8.68	8.73						
35	8.18	8.14	8.12	8.03	7.95	7.87	7.88	7.91	7.97	8.07	8.14	8.19						
40	7.57	7.54	7.50	7.40	7.32	7.24	7.25	7.29	7.35	7.45	7.53	7.59						
45	6.91	6.88	6.83	6.73	6.64	6.57	6.57	6.62	6.68	6.80	6.87	6.93						
50	6.22	6.19	6.13	6.02	5.92	5.85	5.86	5.90	5.97	6.08	6.18	6.25						
55	5.49	5.46	5.40	5.29	5.18	5.11	5.12	5.17	5.25	5.36	5.46	5.52						
60	4.74	4.72	4.66	4.55	4.42	4.36	4.38	4.42	4.49	4.61	4.71	4.78						
65	3.98	3.96	3.90	3.80	3.67	3.60	3.62	3.66	3.74	3.85	3.95	4.02						
70	3.22	3.20	3.15	3.05	2.91	2.84	2.86	2.90	2.98	3.09	3.19	3.27						
75	2.46	2.43	2.38	2.31	2.17	2.09	2.11	2.15	2.22	2.34	2.43	2.51						
80	1.72	1.68	1.62	1.53	1.42	1.35	1.37	1.41	1.48	1.60	1.69	1.76						
85	0.98	0.90	0.89	0.82	0.70	0.67	0.70	0.71	0.75	0.86	0.95	1.03						
90	0.47	0.38	0.28	0.20	0.24	0.28	0.29	0.31	0.23	0.20	0.34	0.48						
95	0.18	0.14	0.18	0.20	0.18	0.16	0.13	0.14	0.17	0.17	0.16	0.17						
100	0.15	0.14	0.18	0.20	0.18	0.17	0.13	0.14	0.17	0.17	0.17	0.15						
105	0.14	0.15	0.18	0.20	0.18	0.17	0.14	0.14	0.18	0.18	0.18	0.15						
110	0.14	0.16	0.18	0.20	0.18	0.18	0.15	0.15	0.19	0.18	0.18	0.15						
115	0.15	0.17	0.18	0.21	0.18	0.19	0.16	0.15	0.20	0.19	0.19	0.15						
120	0.16	0.18	0.19	0.22	0.19	0.20	0.17	0.16	0.20	0.19	0.19	0.15						
125	0.17	0.20	0.19	0.22	0.19	0.20	0.18	0.17	0.21	0.19	0.20	0.16						
130	0.18	0.20	0.20	0.22	0.20	0.21	0.19	0.18	0.21	0.19	0.20	0.17						
135	0.19	0.21	0.20	0.23	0.20	0.22	0.19	0.18	0.22	0.20	0.20	0.18						
140	0.19	0.22	0.21	0.24	0.21	0.22	0.20	0.19	0.22	0.20	0.21	0.18						
145	0.20	0.22	0.22	0.24	0.22	0.23	0.21	0.20	0.23	0.20	0.22	0.19						
150	0.20	0.23	0.23	0.25	0.23	0.23	0.22	0.20	0.23	0.22	0.23	0.19						
155	0.22	0.24	0.24	0.25	0.23	0.24	0.23	0.21	0.24	0.22	0.23	0.20						
160	0.22	0.24	0.24	0.25	0.23	0.25	0.24	0.22	0.24	0.22	0.24	0.21						
165	0.23	0.24	0.25	0.25	0.23	0.25	0.24	0.22	0.25	0.23	0.25	0.22						
170	0.23	0.24	0.25	0.25	0.24	0.25	0.24	0.23	0.25	0.24	0.25	0.23						
175	0.24	0.24	0.25	0.25	0.24	0.25	0.24	0.24	0.25	0.24	0.25	0.24						
180	0.24	0.24	0.25	0.25	0.24	0.25	0.24	0.25	0.25	0.25	0.25	0.24						

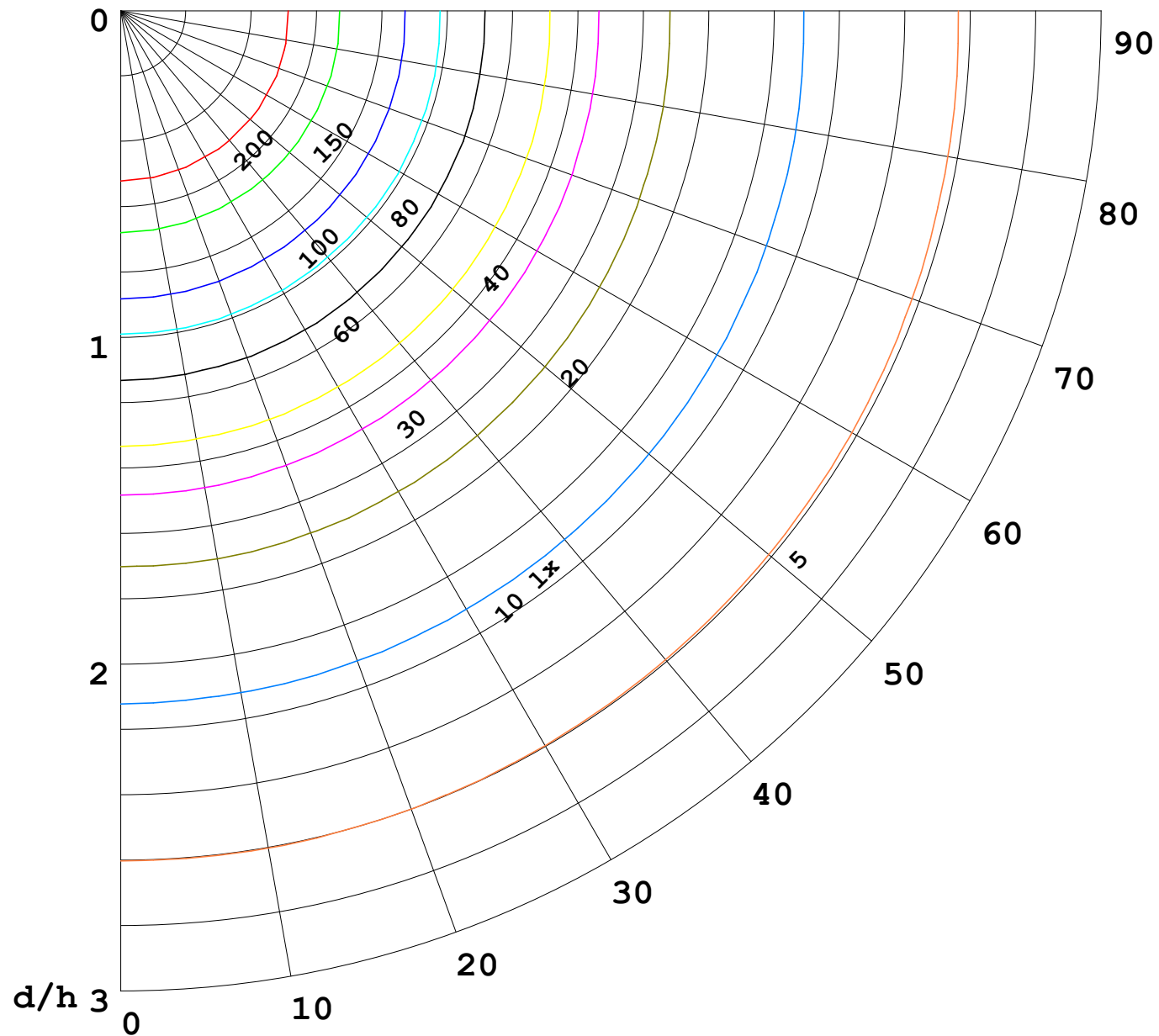
C Range: 0 - 360DEG
C Interval: 30.0DEG
Test Speed: HIGH
Temperature:25.3℃
Operators:
Test Date:2025-03-12

γ Range: 0 - 180DEG
γ Interval: 1.0DEG
Test System:EVERFINE GO-2000B_V1 SYSTEM V2.00.488
Humidity:65.0%
Test Distance:6.360m [K=1.0000]
Remarks:



1000 lm

$\kappa = 1$



F = 1000 lm
 K = 0.7
 Hcc = 0.8 m
 Hfc = 0.0 m
 Eave = 100 lx

	Pcc	Pw	Pfc
————	70	50	30
————	50	30	20

