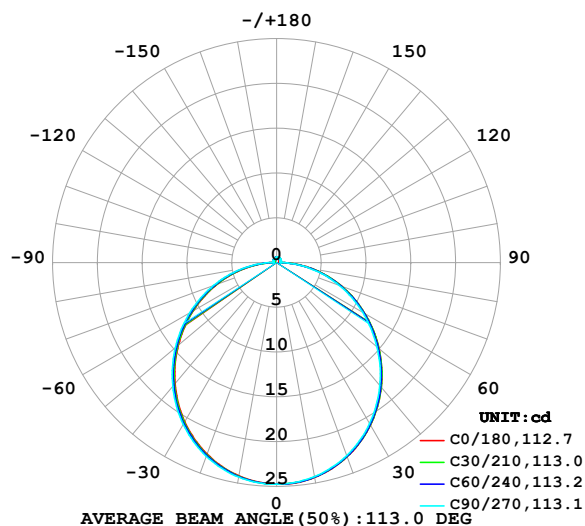


## LUMINAIRE PHOTOMETRIC TEST REPORT

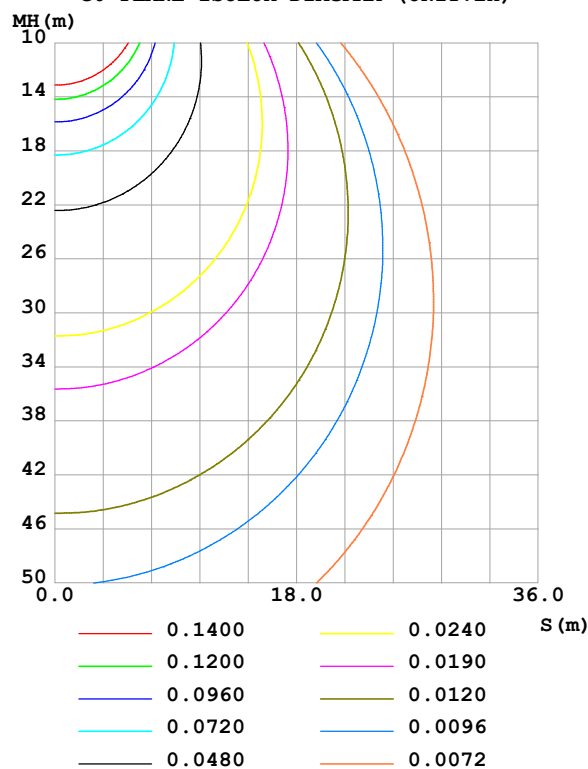
Test:U:24.00V I:0.5009A P:12.02W PF:1.000 Freq:0Hz Lamp Flux:75.6261x1 lm		
NAME: SF16-24V-5050-70-DMX-RGBW(3000K)-R	TYPE:	WEIGHT:
SPEC.:	DIM.: Length=1m	SERIAL No.:
MFR.: OLympia lighting	SUR.:	Shielding Angle:

DATA OF LAMP		PHOTOMETRIC DATA				Eff: 6.29 lm/W
MODEL	5050	I <sub>max</sub> (cd)	24.75	S/MH(C0/180)	1.24	
NOMINAL POWER(W)		LOR(%)	100.0	S/MH(C90/270)	1.25	
RATED VOLTAGE(V)	24	TOTAL FLUX(lm)	75.626	η UP,DN(C0-180)	2.0,48.2	
NOMINAL FLUX(lm)	75.6261	CIE CLASS	DIRECT	η UP,DN(C180-360)	1.8,48.0	
LAMPS INSIDE	1	η up (%)	3.8	CIBSE SHR NOM	1.25	
TEST VOLTAGE(V)		η down (%)	96.2	CIBSE SHR MAX	1.35	

LUMINOUS INTENSITY DISTRIBUTION DIAGRAM



C0 PLANE ISOLUX DIAGRAM (UNIT:lx)



C Range: 0 - 360DEG  
C Interval: 30.0DEG  
Test Speed: HIGH  
Temperature:25.3℃  
Operators:  
Test Date:2025-03-13

γ Range: 0 - 180DEG  
γ Interval: 1.0DEG  
Test System:EVERFINE GO-2000B\_V1 SYSTEM V2.00.488  
Humidity:65.0%  
Test Distance:6.360m [K=1.0000]  
Remarks:

## ZONAL FLUX DIAGRAM

## ZONAL FLUX DIAGRAM:

$\gamma$	C0	C45	C90	C135	C180	C225	C270	C315	$\gamma$	$\Phi$ zone	$\Phi$ total	%lum,lamp
10	24.37	24.33	24.26	24.22	24.18	24.25	24.33	24.36	0- 10	2.340	2.340	3.09,3.09
20	23.06	23.03	22.92	22.81	22.74	22.86	23.00	23.06	10- 20	6.693	9.033	11.9,11.9
30	20.96	20.92	20.77	20.61	20.52	20.66	20.86	20.96	20- 30	10.12	19.15	25.3,25.3
40	18.19	18.14	17.93	17.74	17.65	17.81	18.05	18.19	30- 40	12.16	31.31	41.4,41.4
50	14.93	14.87	14.63	14.41	14.31	14.50	14.76	14.92	40- 50	12.63	43.94	58.1,58.1
60	11.37	11.33	11.09	10.82	10.72	10.91	11.18	11.38	50- 60	11.54	55.48	73.4,73.4
70	7.720	7.662	7.442	7.135	7.043	7.220	7.514	7.718	60- 70	9.181	64.66	85.5,85.5
80	4.073	3.981	3.761	3.485	3.400	3.558	3.842	4.070	70- 80	5.909	70.57	93.3,93.3
90	0.7452	0.5906	0.4246	0.4686	0.4459	0.4553	0.4347	0.6615	80- 90	2.180	72.75	96.2,96.2
100	0.3226	0.3897	0.4304	0.4087	0.3168	0.3737	0.4074	0.3619	90-100	0.4277	73.18	96.8,96.8
110	0.3669	0.4332	0.4591	0.4371	0.3552	0.4027	0.4447	0.3847	100-110	0.4183	73.60	97.3,97.3
120	0.4114	0.4637	0.4906	0.4740	0.3996	0.4304	0.4676	0.4173	110-120	0.4259	74.02	97.9,97.9
130	0.4587	0.4899	0.5164	0.4982	0.4410	0.4638	0.4791	0.4499	120-130	0.4126	74.44	98.4,98.4
140	0.4913	0.5205	0.5452	0.5266	0.4884	0.4958	0.5049	0.4797	130-140	0.3799	74.82	98.9,98.9
150	0.5268	0.5539	0.5882	0.5634	0.5269	0.5263	0.5308	0.5095	140-150	0.3285	75.14	99.4,99.4
160	0.5712	0.5873	0.6168	0.5932	0.5683	0.5655	0.5623	0.5507	150-160	0.2579	75.40	99.7,99.7
170	0.5948	0.6062	0.6197	0.6117	0.5979	0.5990	0.5938	0.5918	160-170	0.1665	75.57	99.9,99.9
180	0.6097	0.6121	0.6197	0.6188	0.6008	0.6135	0.6197	0.6145	170-180	0.0579	75.63	100,100
DEG	LUMINOUS INTENSITY:cd									UNIT:lm		

Conical surface Flux(90deg): 37.67 lm

%lum = 49.8%

%lamp = 49.8%

Conical surface Flux(130deg): 60.434 lm

%lum = 79.9%

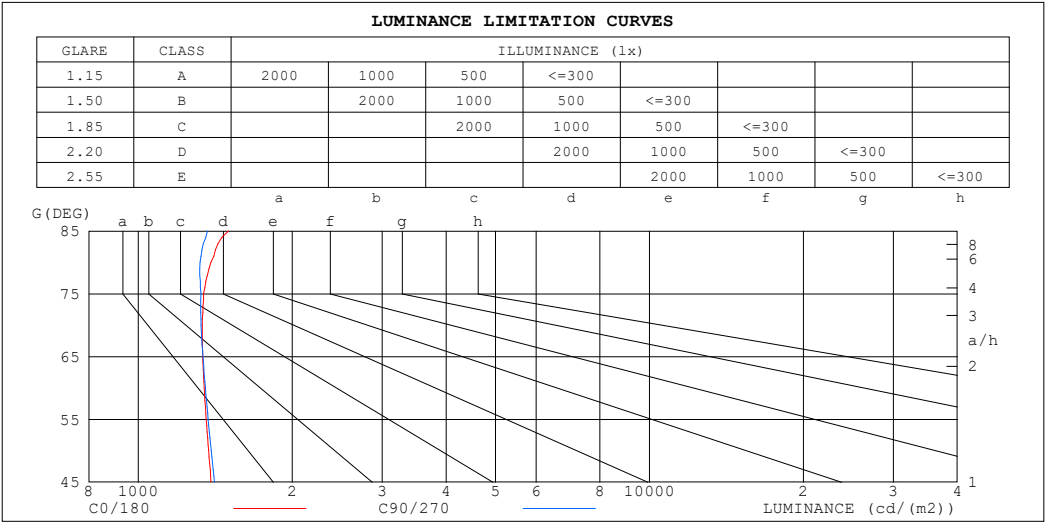
%lamp = 79.9%

C Range: 0 - 360DEG  
 C Interval: 30.0DEG  
 Test Speed: HIGH  
 Temperature:25.3℃  
 Operators:  
 Test Date:2025-03-13

$\gamma$  Range: 0 - 180DEG  
 $\gamma$  Interval: 1.0DEG  
 Test System:EVERFINE GO-2000B\_V1 SYSTEM V2.00.488  
 Humidity:65.0%  
 Test Distance:6.360m [K=1.0000]  
 Remarks:

LUMINANCE LIMITATION CURVES

Test:U:24.00V I:0.5009A P:12.02W PF:1.000 Freq:0Hz Lamp Flux:75.6261x1 lm		
NAME: SF16-24V-5050-70-DMX-RGBW(3000K)-R	TYPE:	WEIGHT:
SPEC.:	DIM.: Length=1m	SERIAL No.:
MFR.: OLympia lighting	SUR.:	Shielding Angle:



LUMINANCE cd/(m2)		
G (DEG)	C0/180	C90/270
85	1500	1364
80	1386	1321
75	1342	1325
70	1334	1327
65	1337	1338
60	1345	1353
55	1358	1369
50	1372	1388
45	1388	1408

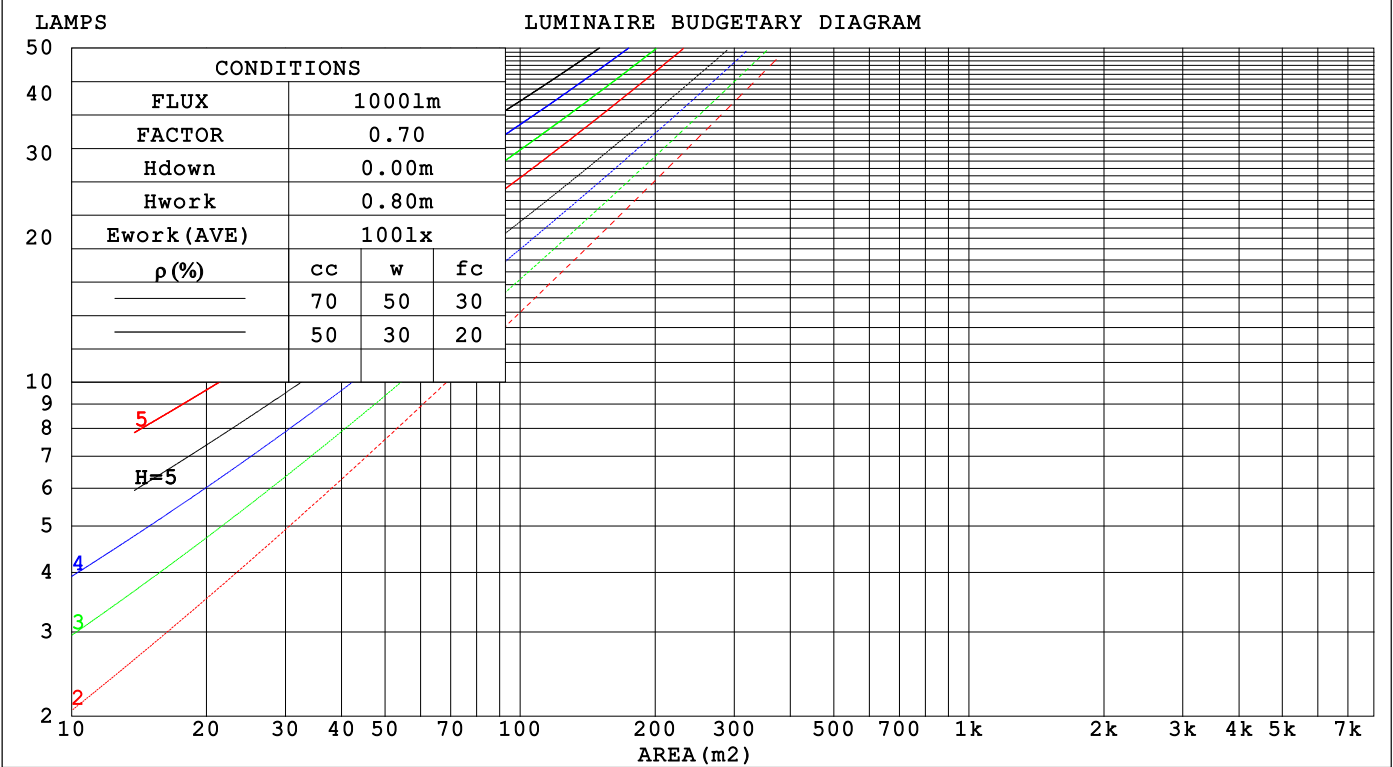
C Range: 0 - 360DEG  
C Interval: 30.0DEG  
Test Speed: HIGH  
Temperature:25.3℃  
Operators:  
Test Date:2025-03-13

γ Range: 0 - 180DEG  
γ Interval: 1.0DEG  
Test System:EVERFINE GO-2000B\_V1 SYSTEM V2.00.488  
Humidity:65.0%  
Test Distance:6.360m [K=1.0000]  
Remarks:

CU AND LUMINAIRE BUDGETARY ESTIMATE DIAGRAM

Test:U:24.00V I:0.5009A P:12.02W PF:1.000 Freq:0Hz		
Lamp Flux:75.6261x1 lm		
NAME: SF16-24V-5050-70-DMX-RGBW(3000K)-R	TYPE:	WEIGHT:
SPEC.:	DIM.: Length=1m	SERIAL No.:
MFR.: OLYMPIA lighting	SUR.:	Shielding Angle:

pcc	80%			70%			50%			30%			10%			0
pw	50%	30%	10%	50%	30%	10%	50%	30%	10%	50%	30%	10%	50%	30%	10%	0
pfc	20%			20%			20%			20%			20%			0
RCR	RCR:Room Cavity Ratio			Coefficients of Utilization(CU)												
0.0	1.18	1.18	1.18	1.15	1.15	1.15	1.09	1.09	1.09	1.04	1.04	1.04	.99	.99	.99	.96
1.0	1.02	.98	.94	.90	.95	.92	.95	.91	.88	.90	.87	.85	.86	.84	.82	.79
2.0	.89	.82	.76	.86	.80	.74	.82	.77	.72	.78	.74	.70	.75	.71	.68	.65
3.0	.78	.69	.63	.76	.68	.62	.72	.66	.60	.69	.63	.59	.66	.61	.57	.55
4.0	.69	.60	.53	.67	.59	.52	.64	.57	.51	.61	.55	.50	.59	.53	.49	.47
5.0	.61	.52	.45	.60	.51	.45	.57	.50	.44	.55	.48	.43	.53	.47	.42	.40
6.0	.55	.46	.39	.54	.45	.39	.52	.44	.38	.50	.43	.38	.48	.42	.37	.35
7.0	.50	.41	.35	.49	.40	.35	.47	.39	.34	.45	.38	.33	.43	.38	.33	.31
8.0	.45	.37	.31	.45	.36	.31	.43	.36	.30	.41	.35	.30	.40	.34	.29	.28
9.0	.42	.33	.28	.41	.33	.28	.39	.32	.27	.38	.32	.27	.37	.31	.27	.25
10.0	.38	.30	.25	.38	.30	.25	.37	.30	.25	.35	.29	.24	.34	.28	.24	.22



C Range: 0 - 360DEG  
C Interval: 30.0DEG  
Test Speed: HIGH  
Temperature:25.3℃  
Operators:  
Test Date:2025-03-13

γ Range: 0 - 180DEG  
γ Interval: 1.0DEG  
Test System:EVERFINE GO-2000B\_V1 SYSTEM V2.00.488  
Humidity:65.0%  
Test Distance:6.360m [K=1.0000]  
Remarks:

## WEC AND CCEC

Test:U:24.00V I:0.5009A P:12.02W PF:1.000 Freq:0Hz Lamp Flux:75.6261x1 lm		
NAME: SF16-24V-5050-70-DMX-RGBW(3000K)-R	TYPE:	WEIGHT:
SPEC.:	DIM.: Length=1m	SERIAL No.:
MFR.: OLYMPIA lighting	SUR.:	Shielding Angle:

pcc	80%			70%			50%			30%			10%			0														
pw	50%	30%	10%	50%	30%	10%	50%	30%	10%	50%	30%	10%	50%	30%	10%	0														
pfc	20%			20%			20%			20%			20%			0														
RCR	RCR:Room Cavity Ratio															Wall Exitance Coefficients(WEC)														
0.0																														
1.0	.325	.185	.059	.317	.181	.057	.301	.173	.055	.287	.165	.053	.274	.159	.051															
2.0	.300	.165	.050	.293	.161	.050	.279	.155	.048	.267	.150	.047	.255	.144	.045															
3.0	.275	.147	.044	.269	.144	.043	.257	.139	.042	.245	.134	.041	.235	.130	.040															
4.0	.253	.131	.039	.247	.129	.038	.236	.125	.037	.226	.121	.037	.216	.118	.036															
5.0	.233	.119	.034	.228	.117	.034	.218	.113	.033	.209	.110	.033	.200	.107	.032															
6.0	.215	.108	.031	.211	.106	.031	.202	.103	.030	.194	.101	.030	.186	.098	.029															
7.0	.200	.099	.028	.196	.098	.028	.188	.095	.027	.180	.092	.027	.173	.090	.026															
8.0	.186	.091	.026	.183	.090	.025	.176	.088	.025	.169	.086	.025	.162	.083	.024															
9.0	.175	.084	.024	.171	.083	.023	.165	.081	.023	.158	.079	.023	.153	.078	.022															
10.0	.164	.079	.022	.161	.078	.022	.155	.076	.021	.149	.074	.021	.144	.072	.021															

pcc	80%			70%			50%			30%			10%			0
pw	50%	30%	10%	50%	30%	10%	50%	30%	10%	50%	30%	10%	50%	30%	10%	0
pfc	20%			20%			20%			20%			20%			0
RCR	RCR:Room Cavity Ratio						Ceiling Cavity Exitance Coefficients (CCEC)									
0.0	.219	.219	.219	.188	.188	.188	.128	.128	.128	.074	.074	.074	.024	.024	.024	
1.0	.211	.185	.162	.180	.159	.140	.123	.109	.097	.071	.063	.056	.023	.020	.018	
2.0	.203	.161	.126	.174	.139	.109	.119	.096	.076	.069	.056	.045	.022	.018	.015	
3.0	.195	.144	.103	.167	.124	.089	.115	.086	.063	.066	.050	.037	.021	.016	.012	
4.0	.187	.131	.087	.161	.113	.076	.111	.079	.054	.064	.046	.032	.021	.015	.010	
5.0	.180	.120	.077	.155	.104	.067	.106	.073	.047	.062	.043	.028	.020	.014	.009	
6.0	.173	.112	.069	.148	.097	.060	.102	.068	.042	.059	.040	.025	.019	.013	.008	
7.0	.166	.105	.063	.143	.091	.055	.099	.064	.039	.057	.038	.023	.018	.012	.008	
8.0	.159	.100	.059	.137	.086	.051	.095	.061	.036	.055	.036	.022	.018	.012	.007	
9.0	.153	.095	.055	.132	.082	.048	.091	.058	.034	.053	.034	.020	.017	.011	.007	
10.0	.147	.090	.052	.127	.079	.046	.088	.055	.033	.051	.033	.019	.017	.011	.006	

C Range: 0 - 360DEG  
C Interval: 30.0DEG  
Test Speed: HIGH  
Temperature:25.3℃  
Operators:  
Test Date:2025-03-13

γ Range: 0 - 180DEG  
γ Interval: 1.0DEG  
Test System:EVERFINE GO-2000B\_V1 SYSTEM V2.00.488  
Humidity:65.0%  
Test Distance:6.360m [K=1.0000]  
Remarks:

UGR(Unified Glare Rating) Table

Test:U:24.00V I:0.5009A P:12.02W PF:1.000 Freq:0Hz Lamp Flux:75.6261x1 lm										
NAME: SF16-24V-5050-70-DMX-RGBW(3000K)-R					TYPE:			WEIGHT:		
SPEC.:					DIM.: Length=1m			SERIAL No.:		
MFR.: OLympia lighting					SUR.:			Shielding Angle:		
ceiling/cavity	0.7	0.7	0.5	0.5	0.3	0.7	0.7	0.5	0.5	0.3
walls	0.5	0.3	0.5	0.3	0.3	0.5	0.3	0.5	0.3	0.3
working plane	0.2	0.2	0.2	0.2	0.2	0.2	0.2	0.2	0.2	0.2
Room dimensions	Viewed crosswise					Viewed endwise				
x = 2H y = 2H	22.6	24.1	22.9	24.4	24.6	22.6	24.1	23.0	24.4	24.7
3H	24.3	25.7	24.7	26.0	26.3	24.3	25.7	24.7	26.0	26.3
4H	25.1	26.4	25.5	26.7	27.1	25.1	26.4	25.5	26.7	27.1
6H	25.8	27.0	26.2	27.3	27.7	25.7	26.9	26.1	27.3	27.7
8H	26.0	27.2	26.4	27.6	28.0	26.0	27.1	26.4	27.5	27.9
12H	26.3	27.4	26.7	27.8	28.2	26.1	27.3	26.6	27.7	28.0
4H 2H	23.3	24.6	23.6	24.9	25.2	23.3	24.6	23.7	24.9	25.3
3H	25.2	26.3	25.6	26.7	27.1	25.2	26.3	25.6	26.7	27.1
4H	26.1	27.2	26.5	27.6	28.0	26.1	27.1	26.5	27.5	27.9
6H	26.9	27.9	27.4	28.3	28.7	26.9	27.8	27.3	28.2	28.7
8H	27.3	28.1	27.8	28.6	29.1	27.2	28.0	27.7	28.5	29.0
12H	27.6	28.4	28.1	28.8	29.3	27.4	28.2	27.9	28.7	29.2
8H 4H	26.5	27.3	26.9	27.8	28.2	26.4	27.3	26.9	27.7	28.2
6H	27.5	28.2	28.0	28.7	29.2	27.4	28.1	27.9	28.6	29.1
8H	27.9	28.6	28.5	29.1	29.6	27.8	28.5	28.4	29.0	29.5
12H	28.4	28.9	28.9	29.4	30.0	28.2	28.8	28.7	29.3	29.8
12H 4H	26.5	27.3	27.0	27.7	28.2	26.5	27.3	27.0	27.7	28.2
6H	27.6	28.2	28.1	28.7	29.3	27.5	28.2	28.0	28.7	29.2
8H	28.1	28.7	28.6	29.2	29.7	28.0	28.6	28.5	29.1	29.6
Variations with the observer position at spacings(CIE Pub.117):										
S = 1.0H	+ 0.1 / - 0.2					+ 0.1 / - 0.2				
1.5H	+ 0.2 / - 0.3					+ 0.2 / - 0.3				
2.0H	+ 0.1 / - 0.3					+ 0.1 / - 0.3				

CIE Pub.117, 75.63 lm Total Lamp Luminous Flux Correct (8log(F/F0) = -9.0)  
Area: 0.0165 m2

C Range: 0 - 360DEG  
C Interval: 30.0DEG  
Test Speed: HIGH  
Temperature:25.3℃  
Operators:  
Test Date:2025-03-13

γ Range: 0 - 180DEG  
γ Interval: 1.0DEG  
Test System:EVERFINE GO-2000B\_V1 SYSTEM V2.00.488  
Humidity:65.0%  
Test Distance:6.360m [K=1.0000]  
Remarks:

## UTILIZATION FACTORS TABLE

Test:U:24.00V I:0.5009A P:12.02W PF:1.000 Freq:0Hz Lamp Flux:75.6261x1 lm		
NAME: SF16-24V-5050-70-DMX-RGBW(3000K)-R	TYPE:	WEIGHT:
SPEC.:	DIM.: Length=1m	SERIAL No.:
MFR.: OLympia lighting	SUR.:	Shielding Angle:

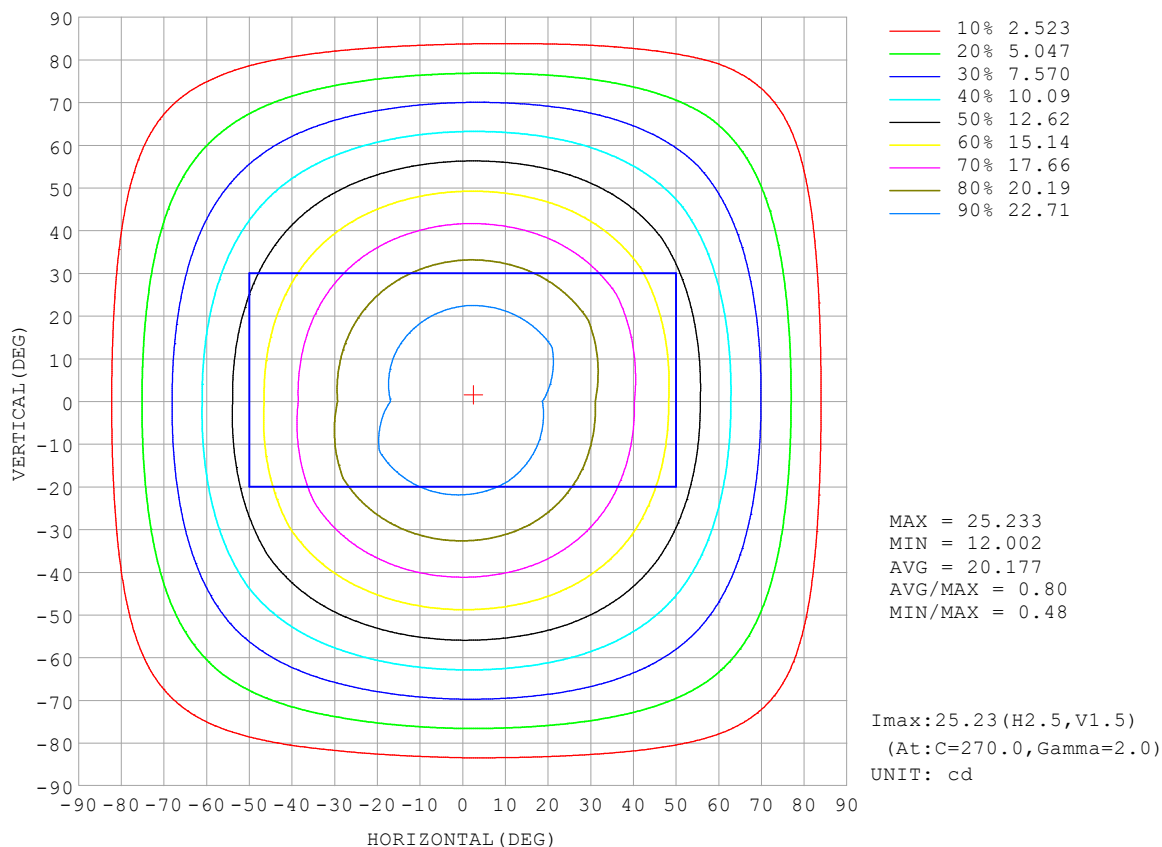
REFLECTANCE										
Ceiling	0.8	0.8	0.8	0.7	0.7	0.7	0.5	0.5	0.5	0
Walls	0.7	0.5	0.3	0.7	0.5	0.3	0.7	0.5	0.3	0
Working plane	0.2	0.2	0.2	0.2	0.2	0.2	0.2	0.2	0.2	0
ROOM INDEX	UTILIZATION FACTORS (PERCENT) $k(RI) \times RCR = 5$									
$k = 0.60$	56	44	37	55	44	37	53	43	37	30
0.80	66	54	46	64	53	46	62	52	45	38
1.00	74	62	55	72	62	54	70	63	54	46
1.25	81	70	62	79	69	62	76	67	61	53
1.50	86	75	68	84	74	68	80	72	66	58
2.00	93	84	77	91	82	76	87	80	74	65
2.50	97	89	82	94	87	81	90	84	79	69
3.00	100	93	87	98	91	86	93	88	83	74
4.00	104	98	93	102	96	92	97	92	88	78
5.00	107	102	97	104	99	95	99	95	92	81
ROOM INDEX	UF (total)									Direct
According to DIN EN 13032-2 2004			Suspended					SHRNOM = 1.25		

C Range: 0 - 360DEG  
 C Interval: 30.0DEG  
 Test Speed: HIGH  
 Temperature: 25.3 °C  
 Operators:  
 Test Date: 2025-03-13

γ Range: 0 - 180DEG  
 γ Interval: 1.0DEG  
 Test System: EVERFINE GO-2000B\_V1 SYSTEM V2.00.488  
 Humidity: 65.0%  
 Test Distance: 6.360m [K=1.0000]  
 Remarks:

## ISOCANDELA DIAGRAM

Test:U:24.00V I:0.5009A P:12.02W PF:1.000 Freq:0Hz Lamp Flux:75.6261x1 lm		
NAME: SF16-24V-5050-70-DMX-RGBW(3000K)-R	TYPE:	WEIGHT:
SPEC.:	DIM.: Length=1m	SERIAL No.:
MFR.: OLympia lighting	SUR.:	Shielding Angle:



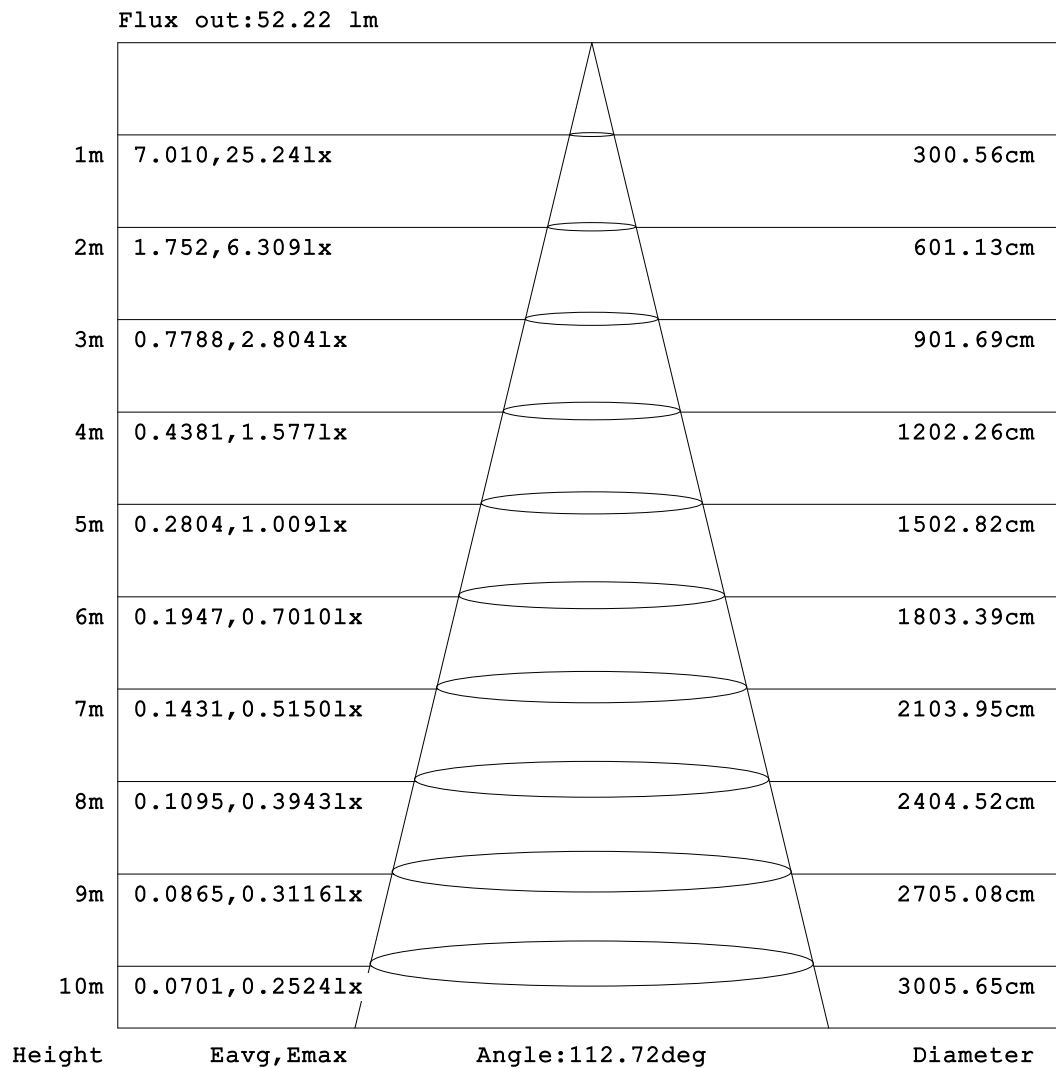
C Range: 0 - 360DEG  
C Interval: 30.0DEG  
Test Speed: HIGH  
Temperature:25.3℃  
Operators:  
Test Date:2025-03-13

γ Range: 0 - 180DEG  
γ Interval: 1.0DEG  
Test System:EVERFINE GO-2000B\_V1 SYSTEM V2.00.488  
Humidity:65.0%  
Test Distance:6.360m [K=1.0000]  
Remarks:



## AAI Figure

Test:U:24.00V I:0.5009A P:12.02W PF:1.000 Freq:0Hz Lamp Flux:75.6261lx1 lm		
NAME: SF16-24V-5050-70-DMX-RGBW(3000K)-R	TYPE:	WEIGHT:
SPEC.:	DIM.: Length=1m	SERIAL No.:
MFR.: OLympia lighting	SUR.:	Shielding Angle:



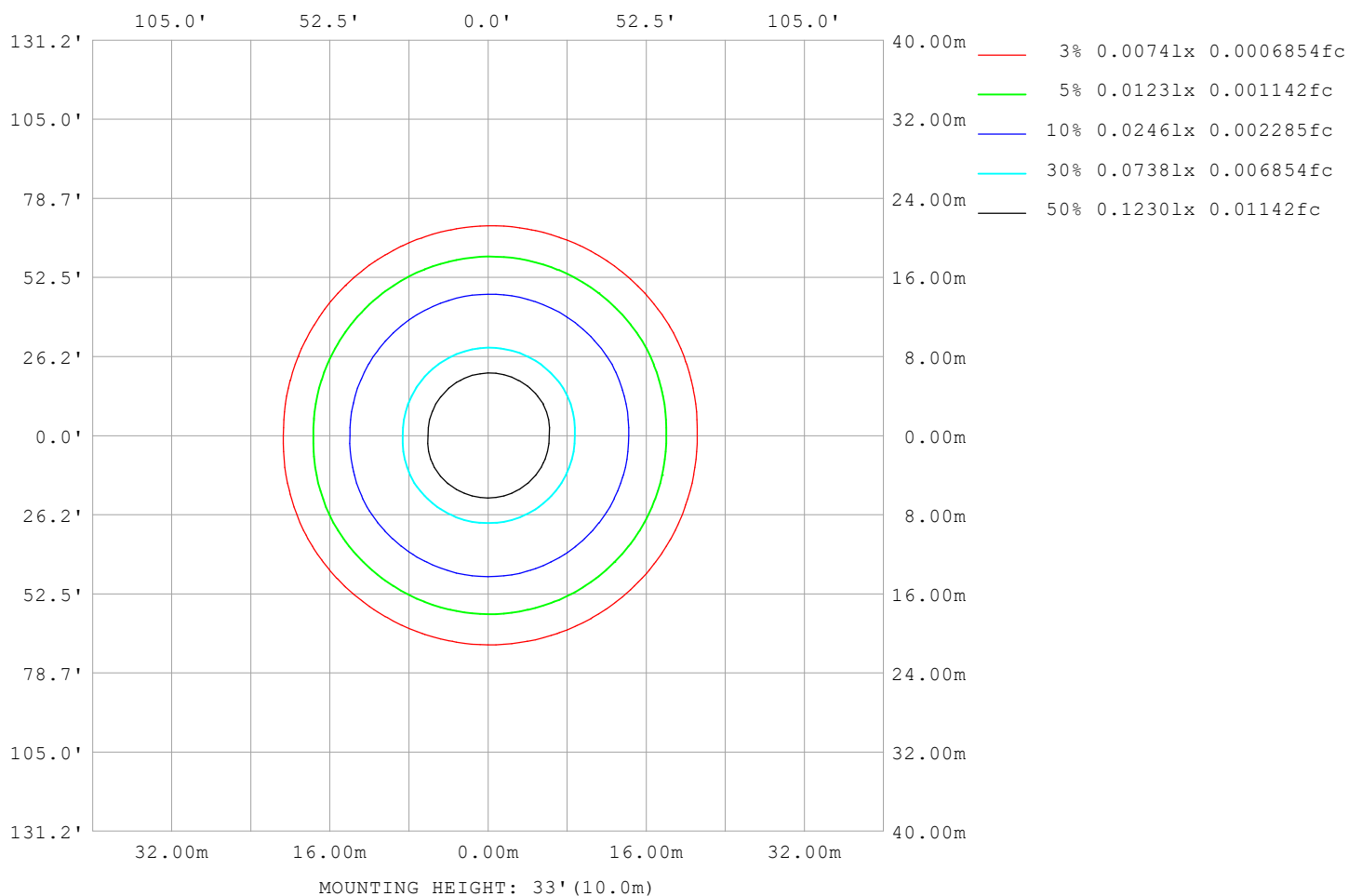
Note:The Curves indicate the illuminated area and the average illumination when the luminaire is at different distance.

C Range: 0 - 360DEG  
C Interval: 30.0DEG  
Test Speed: HIGH  
Temperature:25.3℃  
Operators:  
Test Date:2025-03-13

γ Range: 0 - 180DEG  
γ Interval: 1.0DEG  
Test System:EVERFINE GO-2000B\_V1 SYSTEM V2.00.488  
Humidity:65.0%  
Test Distance:6.360m [K=1.0000]  
Remarks:

## ISOLUX DIAGRAM

Test:U:24.00V I:0.5009A P:12.02W PF:1.000 Freq:0Hz Lamp Flux:75.626lx 1m		
NAME: SF16-24V-5050-70-DMX-RGBW(3000K)-R	TYPE:	WEIGHT:
SPEC.:	DIM.: Length=1m	SERIAL No.:
MFR.: OLympia lighting	SUR.:	Shielding Angle:



C Range: 0 - 360DEG  
C Interval: 30.0DEG  
Test Speed: HIGH  
Temperature: 25.3°C  
Operators:  
Test Date: 2025-03-13

γ Range: 0 - 180DEG  
γ Interval: 1.0DEG  
Test System: EVERFINE GO-2000B\_V1 SYSTEM V2.00.488  
Humidity: 65.0%  
Test Distance: 6.360m [K=1.0000]  
Remarks:

## LED Avg.L Report

Test:U:24.00V I:0.5009A P:12.02W PF:1.000 Freq:0Hz Lamp Flux:75.6261x1 lm		
NAME: SF16-24V-5050-70-DMX-RGBW(3000K)-R	TYPE:	WEIGHT:
SPEC.:	DIM.: Length=1m	SERIAL No.:
MFR.: OLympia lighting	SUR.:	Shielding Angle:

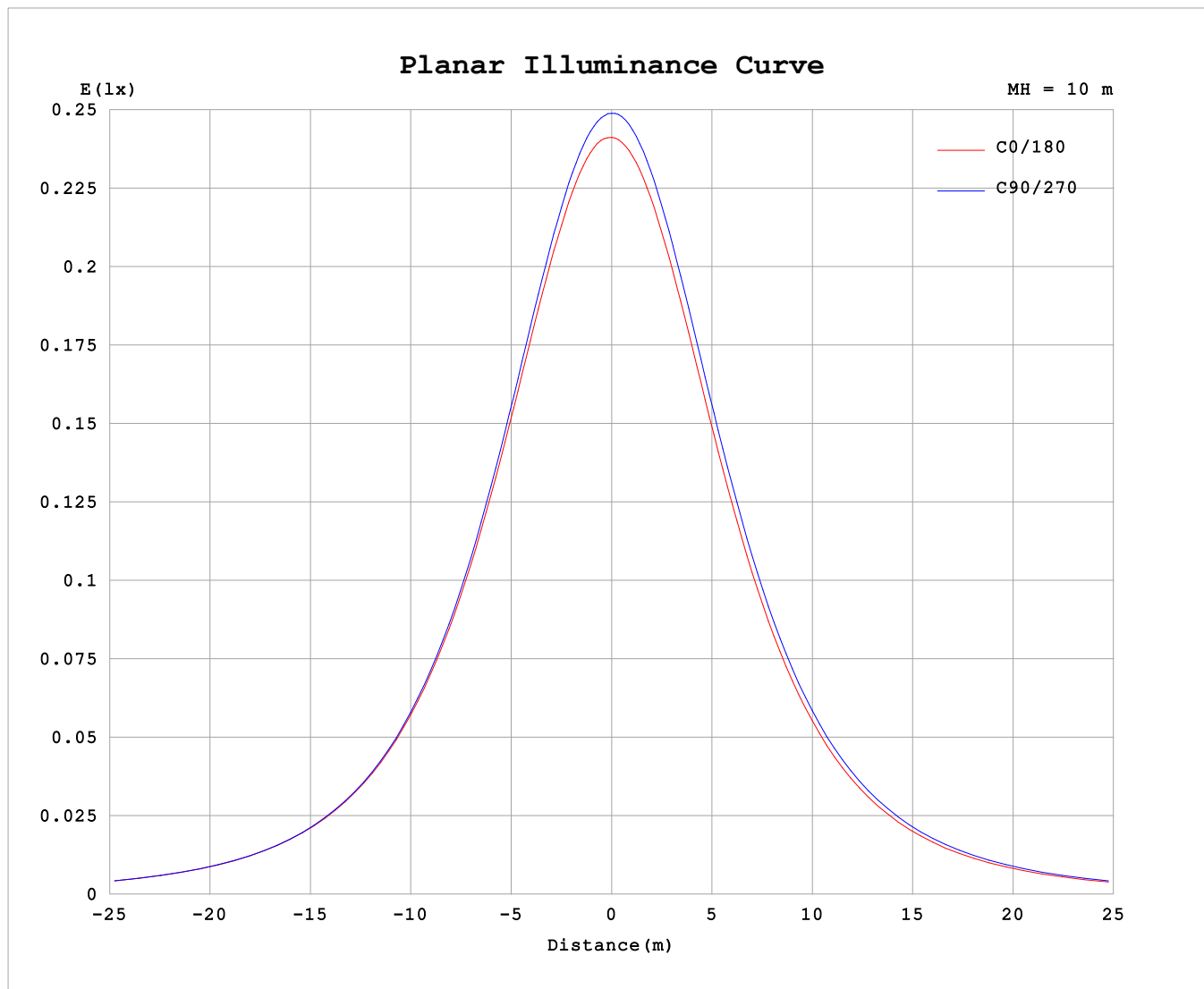
AvgL	cd/m2
L_0~180 (65) av	1323
L_0~180 (75) av	1299
L_0~180 (85) av	1324
L_90~270 (65) av	1336
L_90~270 (75) av	1323
L_90~270 (85) av	1379
L_45 (65) av	1331
L_45 (75) av	1312
L_45 (85) av	1353

Standard: GB/T 29293-2012

C Range: 0 - 360DEG  
C Interval: 30.0DEG  
Test Speed: HIGH  
Temperature:25.3℃  
Operators:  
Test Date:2025-03-13

γ Range: 0 - 180DEG  
γ Interval: 1.0DEG  
Test System:EVERFINE GO-2000B\_V1 SYSTEM V2.00.488  
Humidity:65.0%  
Test Distance:6.360m [K=1.0000]  
Remarks:

## Planar Illuminance Curve



C Range: 0 - 360DEG  
C Interval: 30.0DEG  
Test Speed: HIGH  
Temperature: 25.3 °C  
Operators:  
Test Date: 2025-03-13

$\gamma$  Range: 0 - 180DEG  
 $\gamma$  Interval: 1.0DEG  
Test System: EVERFINE GO-2000B\_V1 SYSTEM V2.00.488  
Humidity: 65.0%  
Test Distance: 6.360m [K=1.0000]  
Remarks:

## LUMINOUS DISTRIBUTION INTENSITY DATA

Test:U:24.00V I:0.5009A P:12.02W PF:1.000 Freq:0Hz Lamp Flux:75.6261x1 lm											
NAME: SF16-24V-5050-70-DMX-RGBW(3000K)-R						TYPE:			WEIGHT:		
SPEC.:						DIM.: Length=1m			SERIAL No.:		
MFR.: Olym pia lighting						SUR.:			Shielding Angle:		

Table--1

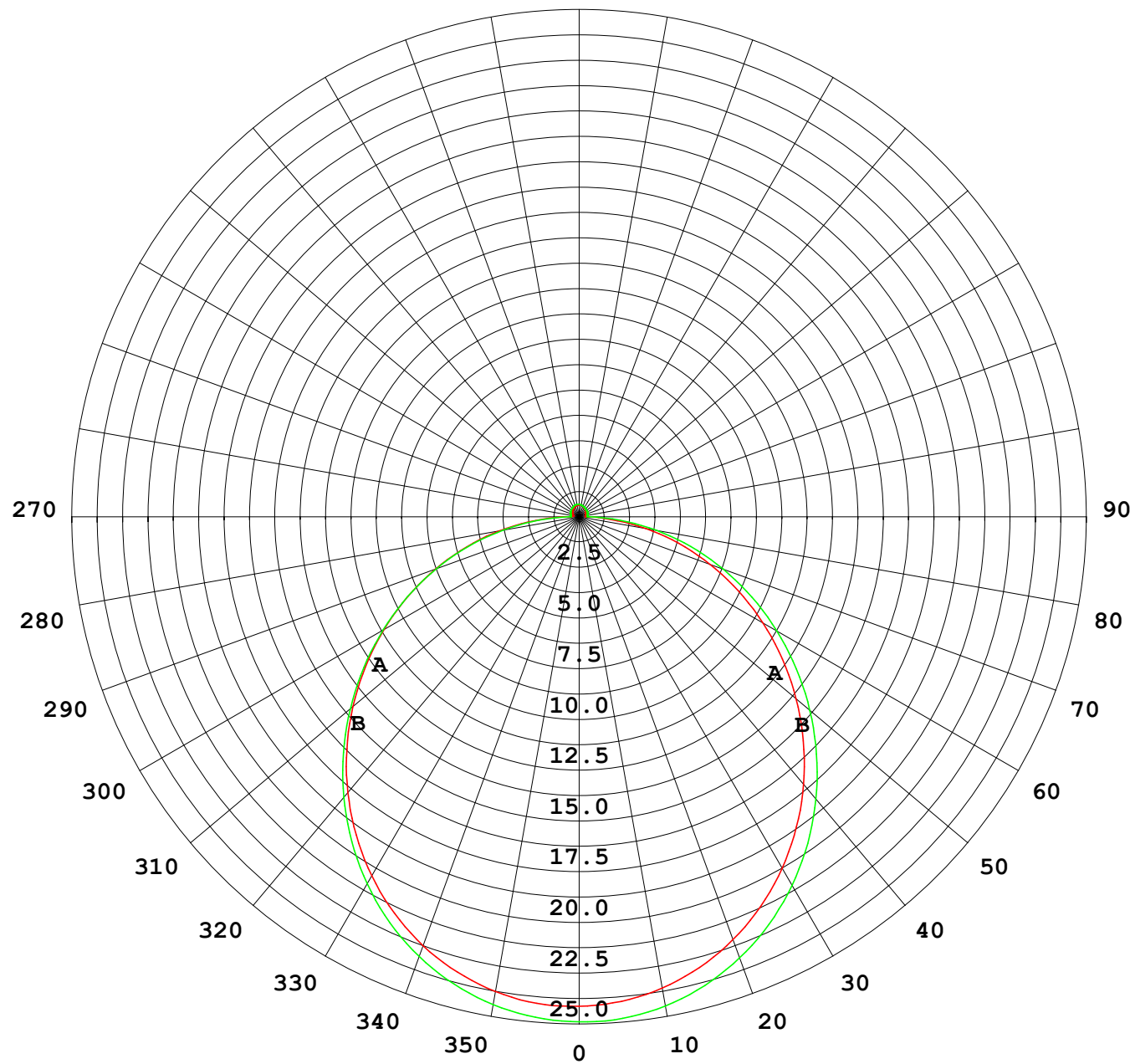
UNIT: cd

C (DEG) γ (DEG)	0	30	60	90	120	150	180	210	240	270	300	330							
0	24.7	24.7	24.7	24.7	24.7	24.7	24.7	24.7	24.7	24.7	24.7	24.7							
5	24.7	24.7	24.7	24.6	24.6	24.6	24.6	24.6	24.6	24.7	24.6	24.7							
10	24.4	24.3	24.3	24.3	24.2	24.2	24.2	24.2	24.3	24.3	24.3	24.4							
15	23.8	23.8	23.8	23.7	23.7	23.6	23.6	23.6	23.7	23.8	23.8	23.8							
20	23.1	23.0	23.0	22.9	22.9	22.8	22.7	22.8	22.9	23.0	23.0	23.1							
25	22.1	22.1	22.1	21.9	21.8	21.8	21.7	21.8	21.9	22.0	22.1	22.1							
30	21.0	20.9	20.9	20.8	20.7	20.6	20.5	20.6	20.7	20.9	20.9	21.0							
35	19.6	19.6	19.6	19.4	19.3	19.2	19.2	19.3	19.4	19.5	19.6	19.7							
40	18.2	18.2	18.1	17.9	17.8	17.7	17.6	17.7	17.9	18.0	18.2	18.2							
45	16.6	16.6	16.5	16.3	16.2	16.1	16.0	16.1	16.3	16.4	16.6	16.6							
50	14.9	14.9	14.8	14.6	14.5	14.4	14.3	14.4	14.6	14.8	14.9	14.9							
55	13.2	13.2	13.1	12.9	12.7	12.6	12.5	12.6	12.8	13.0	13.1	13.2							
60	11.4	11.4	11.3	11.1	10.9	10.8	10.7	10.8	11.0	11.2	11.4	11.4							
65	9.56	9.56	9.46	9.28	9.04	8.92	8.89	8.98	9.17	9.35	9.53	9.59							
70	7.72	7.71	7.61	7.44	7.19	7.08	7.04	7.13	7.31	7.51	7.69	7.75							
75	5.88	5.88	5.76	5.63	5.36	5.25	5.22	5.29	5.48	5.67	5.86	5.92							
80	4.07	4.06	3.90	3.76	3.54	3.43	3.40	3.46	3.65	3.84	4.03	4.11							
85	2.21	2.19	2.02	1.95	1.72	1.63	1.60	1.65	1.84	2.01	2.22	2.30							
90	0.75	0.71	0.47	0.42	0.47	0.47	0.45	0.47	0.44	0.43	0.59	0.73							
95	0.33	0.37	0.36	0.42	0.42	0.39	0.31	0.35	0.40	0.40	0.38	0.33							
100	0.32	0.38	0.40	0.43	0.42	0.40	0.32	0.34	0.41	0.41	0.40	0.33							
105	0.34	0.41	0.42	0.44	0.43	0.42	0.33	0.35	0.43	0.43	0.42	0.33							
110	0.37	0.43	0.44	0.46	0.44	0.43	0.36	0.37	0.44	0.44	0.42	0.35							
115	0.39	0.44	0.45	0.48	0.46	0.45	0.38	0.39	0.45	0.46	0.44	0.37							
120	0.41	0.46	0.47	0.49	0.48	0.47	0.40	0.40	0.46	0.47	0.45	0.38							
125	0.44	0.47	0.47	0.51	0.48	0.48	0.42	0.42	0.48	0.47	0.46	0.40							
130	0.46	0.49	0.49	0.52	0.50	0.50	0.44	0.43	0.49	0.48	0.48	0.42							
135	0.48	0.51	0.51	0.53	0.51	0.52	0.46	0.46	0.51	0.49	0.49	0.43							
140	0.49	0.52	0.52	0.55	0.52	0.53	0.49	0.47	0.52	0.50	0.51	0.45							
145	0.51	0.53	0.54	0.57	0.55	0.55	0.50	0.50	0.54	0.51	0.52	0.47							
150	0.53	0.55	0.56	0.59	0.56	0.57	0.53	0.51	0.54	0.53	0.53	0.49							
155	0.55	0.57	0.58	0.61	0.57	0.58	0.54	0.53	0.56	0.55	0.55	0.51							
160	0.57	0.58	0.59	0.62	0.59	0.60	0.57	0.55	0.58	0.56	0.57	0.53							
165	0.59	0.60	0.60	0.62	0.60	0.61	0.59	0.57	0.59	0.57	0.58	0.55							
170	0.59	0.61	0.60	0.62	0.61	0.62	0.60	0.59	0.61	0.59	0.60	0.58							
175	0.60	0.61	0.61	0.62	0.61	0.62	0.60	0.60	0.61	0.61	0.62	0.60							
180	0.61	0.61	0.62	0.62	0.62	0.62	0.60	0.61	0.61	0.62	0.62	0.61							

C Range: 0 - 360DEG  
C Interval: 30.0DEG  
Test Speed: HIGH  
Temperature:25.3℃  
Operators:  
Test Date:2025-03-13

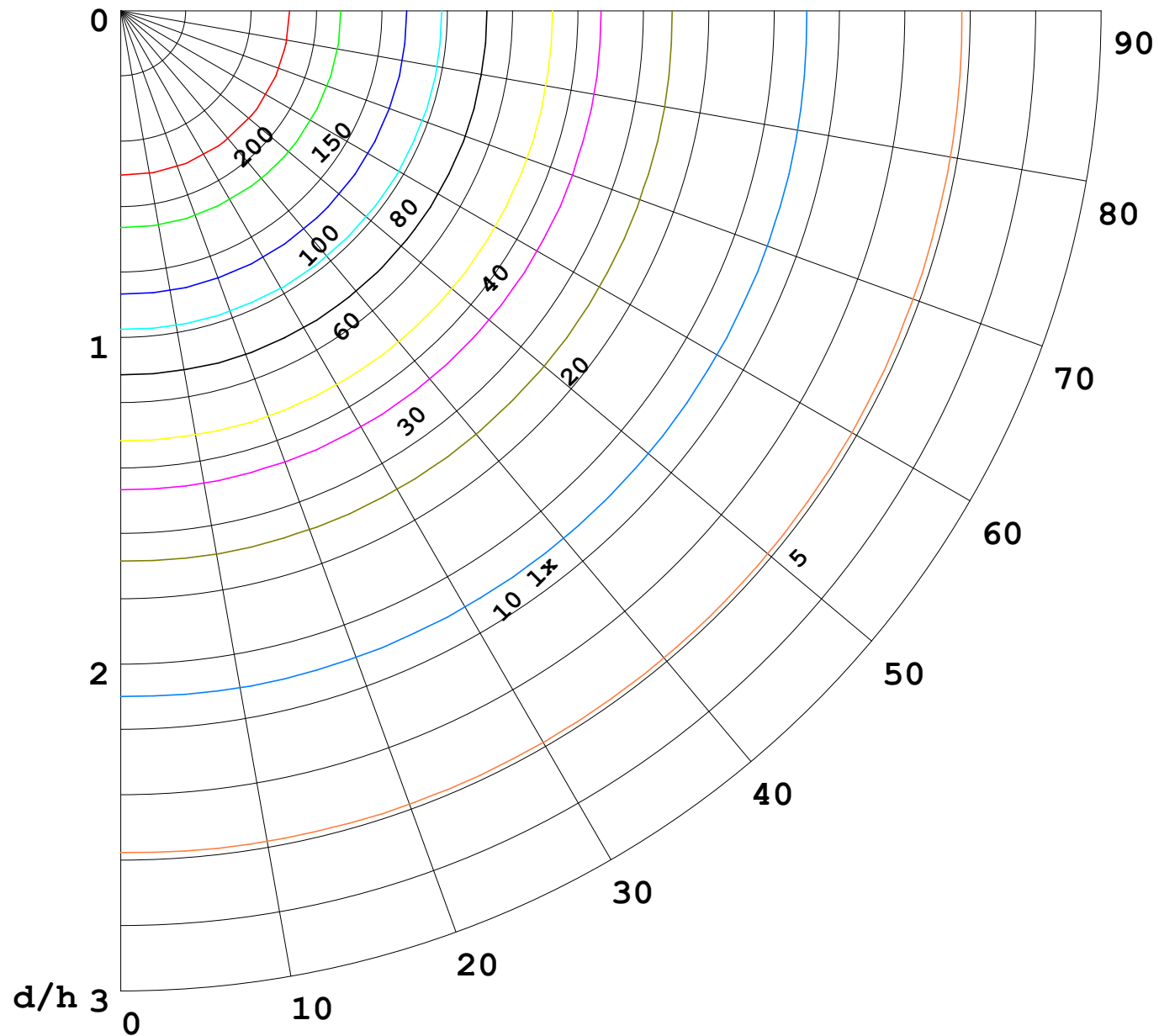
γ Range: 0 - 180DEG  
γ Interval: 1.0DEG  
Test System:EVERFINE GO-2000B\_V1 SYSTEM V2.00.488  
Humidity:65.0%  
Test Distance:6.360m [K=1.0000]  
Remarks:

I (cd)



1000 lm

$\kappa = 1$



F = 1000 lm  
 K = 0.7  
 Hcc = 0.8 m  
 Hfc = 0.0 m  
 Eave = 100 lx

	Pcc	Pw	Pfc
—————	70	50	30
—————	50	30	20

