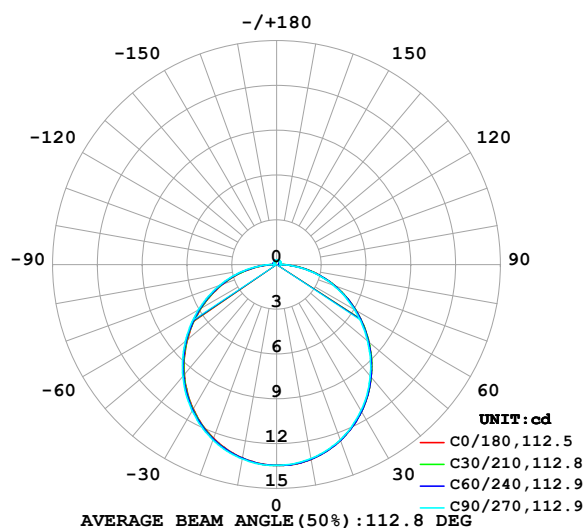


LUMINAIRE PHOTOMETRIC TEST REPORT

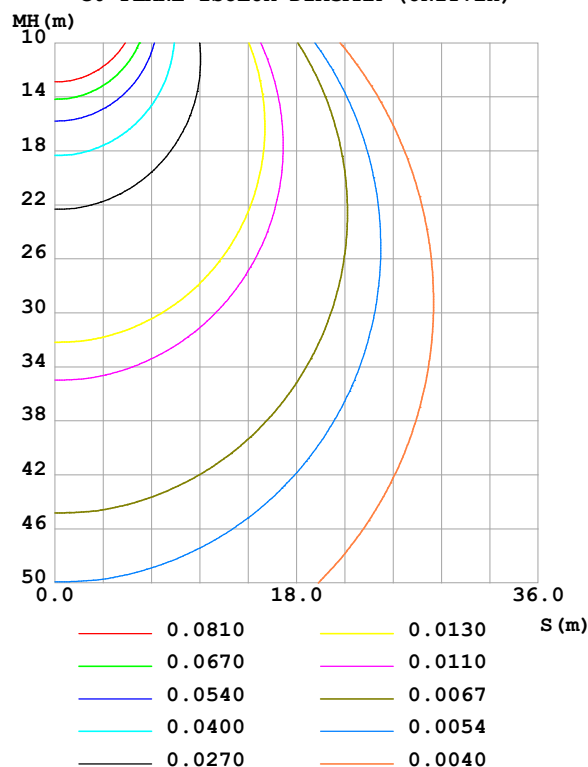
Test:U:24.00V I:0.4893A P:11.74W PF:1.000 Freq:0Hz Lamp Flux:40.9766x1 lm		
NAME: SF16-24V-5050-70-DMX-RGBW(3000K)-B	TYPE:	WEIGHT:
SPEC.:	DIM.: Length=1m	SERIAL No.:
MFR.: OLympia lighting	SUR.:	Shielding Angle:

DATA OF LAMP		PHOTOMETRIC DATA				Eff: 3.49 lm/W
MODEL	5050	I _{max} (cd)	13.46	S/MH(C0/180)	1.24	
NOMINAL POWER(W)		LOR(%)	100.0	S/MH(C90/270)	1.25	
RATED VOLTAGE(V)	24	TOTAL FLUX(lm)	40.977	η UP,DN(C0-180)	1.9,48.2	
NOMINAL FLUX(lm)	40.9766	CIE CLASS	DIRECT	η UP,DN(C180-360)	1.8,48.1	
LAMPS INSIDE	1	η up (%)	3.7	CIBSE SHR NOM	1.25	
TEST VOLTAGE(V)		η down (%)	96.3	CIBSE SHR MAX	1.35	

LUMINOUS INTENSITY DISTRIBUTION DIAGRAM



C0 PLANE ISOLUX DIAGRAM (UNIT:lx)



C Range: 0 - 360DEG
C Interval: 30.0DEG
Test Speed: HIGH
Temperature:25.3℃
Operators:
Test Date:2025-03-13

γ Range: 0 - 180DEG
γ Interval: 1.0DEG
Test System:EVERFINE GO-2000B_V1 SYSTEM V2.00.488
Humidity:65.0%
Test Distance:6.360m [K=1.0000]
Remarks:

ZONAL FLUX DIAGRAM

ZONAL FLUX DIAGRAM:

γ	C0	C45	C90	C135	C180	C225	C270	C315	γ	Φ zone	Φ total	%lum,lamp
10	13.25	13.24	13.20	13.18	13.16	13.18	13.22	13.25	0- 10	1.273	1.273	3.11,3.11
20	12.53	12.53	12.49	12.41	12.38	12.42	12.50	12.53	10- 20	3.640	4.913	12,12
30	11.37	11.37	11.31	11.22	11.18	11.23	11.31	11.37	20- 30	5.499	10.41	25.4,25.4
40	9.855	9.851	9.764	9.654	9.617	9.678	9.782	9.861	30- 40	6.610	17.02	41.5,41.5
50	8.067	8.061	7.956	7.831	7.800	7.866	7.989	8.078	40- 50	6.853	23.87	58.3,58.3
60	6.137	6.121	6.030	5.866	5.844	5.914	6.039	6.147	50- 60	6.255	30.13	73.5,73.5
70	4.133	4.131	4.050	3.870	3.843	3.918	4.044	4.155	60- 70	4.967	35.10	85.7,85.7
80	2.174	2.132	2.048	1.895	1.870	1.945	2.072	2.184	70- 80	3.195	38.29	93.4,93.4
90	0.3820	0.3076	0.2397	0.2484	0.2359	0.2456	0.2377	0.3522	80- 90	1.181	39.47	96.3,96.3
100	0.1731	0.2064	0.2397	0.2179	0.1730	0.1992	0.2137	0.1933	90-100	0.2280	39.70	96.9,96.9
110	0.1874	0.2237	0.2541	0.2280	0.1904	0.2122	0.2252	0.2006	100-110	0.2199	39.92	97.4,97.4
120	0.2134	0.2410	0.2657	0.2439	0.2135	0.2266	0.2368	0.2193	110-120	0.2220	40.14	98,98
130	0.2307	0.2554	0.2772	0.2612	0.2365	0.2425	0.2454	0.2352	120-130	0.2145	40.36	98.5,98.5
140	0.2509	0.2728	0.2946	0.2756	0.2568	0.2598	0.2627	0.2482	130-140	0.1979	40.55	99,99
150	0.2682	0.2944	0.3176	0.2929	0.2798	0.2771	0.2714	0.2670	140-150	0.1719	40.73	99.4,99.4
160	0.2856	0.3118	0.3176	0.3045	0.3029	0.2930	0.2858	0.2857	150-160	0.1348	40.86	99.7,99.7
170	0.3057	0.3146	0.3176	0.3117	0.3115	0.3089	0.3003	0.3045	160-170	0.0862	40.95	99.9,99.9
180	0.3144	0.3146	0.3176	0.3146	0.3115	0.3132	0.3176	0.3160	170-180	0.0298	40.98	100,100
DEG	LUMINOUS INTENSITY:cd									UNIT:lm		

Conical surface Flux(90deg): 20.473 lm

%lum = 50.0%

%lamp = 50.0%

Conical surface Flux(130deg): 32.81 lm

%lum = 80.1%

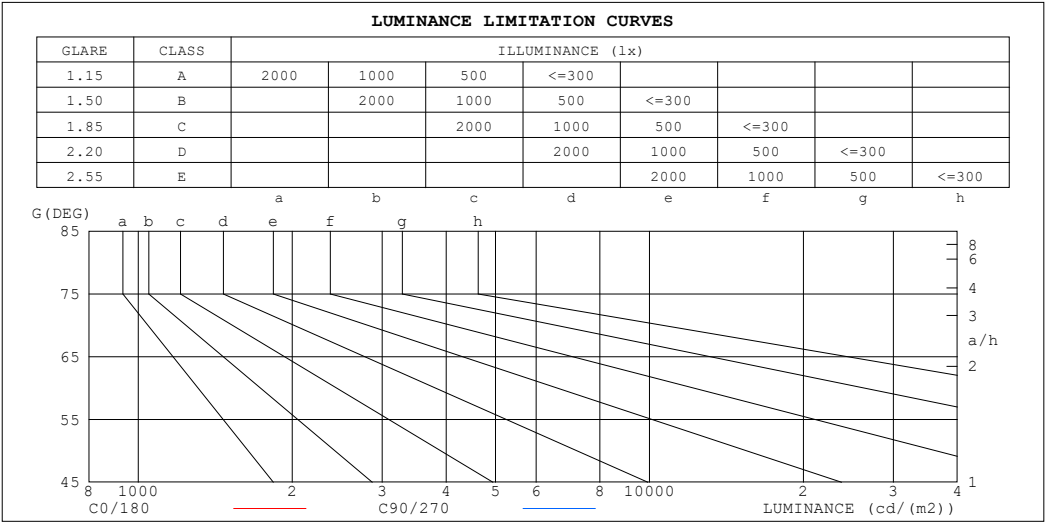
%lamp = 80.1%

C Range: 0 - 360DEG
 C Interval: 30.0DEG
 Test Speed: HIGH
 Temperature:25.3℃
 Operators:
 Test Date:2025-03-13

γ Range: 0 - 180DEG
 γ Interval: 1.0DEG
 Test System:EVERFINE GO-2000B_V1 SYSTEM V2.00.488
 Humidity:65.0%
 Test Distance:6.360m [K=1.0000]
 Remarks:

LUMINANCE LIMITATION CURVES

Test:U:24.00V I:0.4893A P:11.74W PF:1.000 Freq:0Hz Lamp Flux:40.9766x1 lm		
NAME: SF16-24V-5050-70-DMX-RGBW(3000K)-B	TYPE:	WEIGHT:
SPEC.:	DIM.: Length=1m	SERIAL No.:
MFR.: OLympia lighting	SUR.:	Shielding Angle:



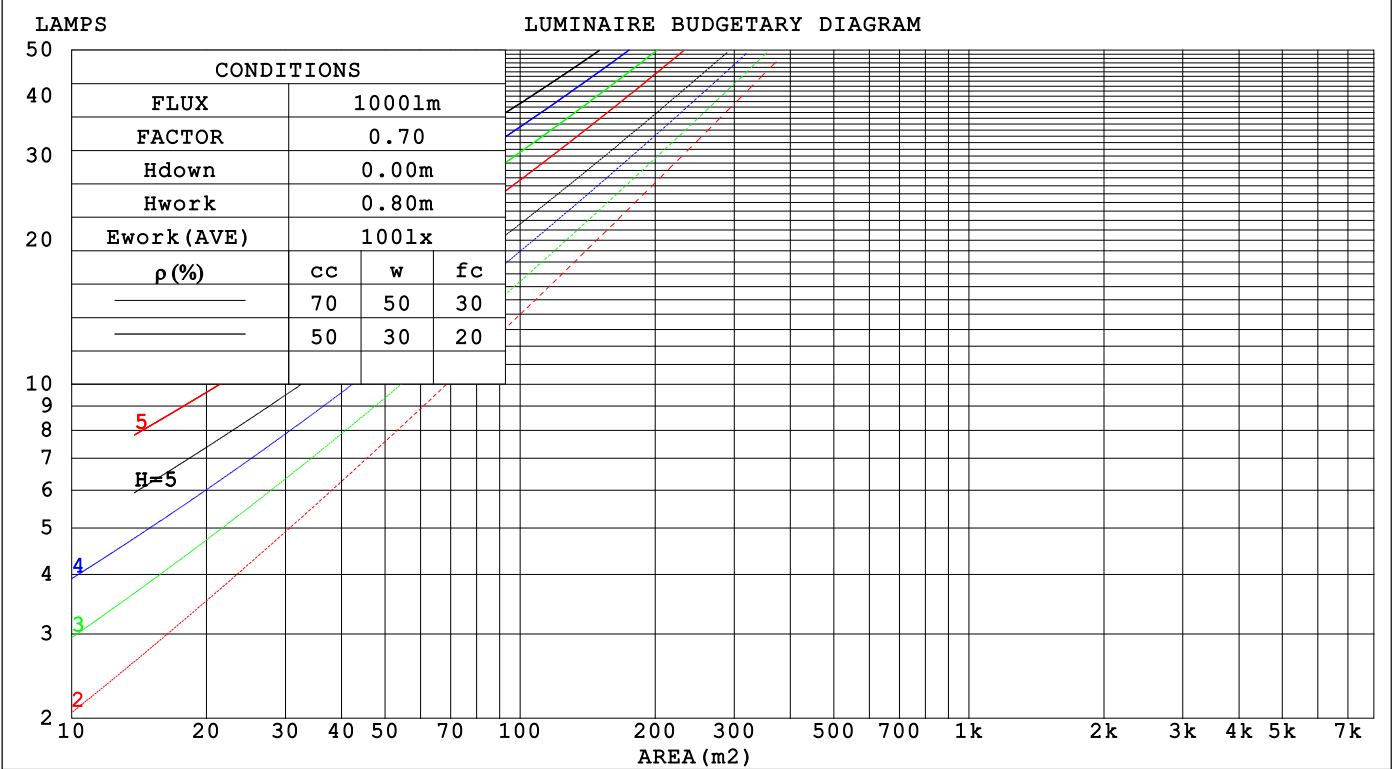
LUMINANCE cd/(m2)		
G (DEG)	C0/180	C90/270
85	808	747
80	759	715
75	738	717
70	733	717
65	737	722
60	744	731
55	753	739
50	761	750
45	771	761

C Range: 0 - 360DEG	γ Range: 0 - 180DEG
C Interval: 30.0DEG	γ Interval: 1.0DEG
Test Speed: HIGH	Test System:EVERFINE GO-2000B_V1 SYSTEM V2.00.488
Temperature:25.3℃	Humidity:65.0%
Operators:	Test Distance:6.360m [K=1.0000]
Test Date:2025-03-13	Remarks:

CU AND LUMINAIRE BUDGETARY ESTIMATE DIAGRAM

Test:U:24.00V I:0.4893A P:11.74W PF:1.000 Freq:0Hz		
Lamp Flux:40.9766x1 lm		
NAME: SF16-24V-5050-70-DMX-RGBW(3000K)-B	TYPE:	WEIGHT:
SPEC.:	DIM.: Length=1m	SERIAL No.:
MFR.: OLYMPIA lighting	SUR.:	Shielding Angle:

pcc	80%			70%			50%			30%			10%			0														
pw	50%	30%	10%	50%	30%	10%	50%	30%	10%	50%	30%	10%	50%	30%	10%	0														
pfc	20%			20%			20%			20%			20%			0														
RCR	RCR:Room Cavity Ratio															Coefficients of Utilization(CU)														
0.0	1.18	1.18	1.18	1.15	1.15	1.15	1.09	1.09	1.09	1.04	1.04	1.04	.99	.99	.99	.96														
1.0	1.02	.98	.94	.90	.95	.92	.95	.91	.88	.90	.87	.85	.86	.84	.82	.79														
2.0	.89	.82	.76	.86	.80	.74	.82	.77	.72	.78	.74	.70	.75	.71	.68	.65														
3.0	.78	.69	.63	.76	.68	.62	.72	.66	.60	.69	.63	.59	.66	.61	.57	.55														
4.0	.69	.60	.53	.67	.59	.52	.64	.57	.51	.61	.55	.50	.59	.53	.49	.47														
5.0	.61	.52	.45	.60	.51	.45	.57	.50	.44	.55	.48	.43	.53	.47	.42	.40														
6.0	.55	.46	.40	.54	.45	.39	.52	.44	.39	.50	.43	.38	.48	.42	.37	.35														
7.0	.50	.41	.35	.49	.41	.35	.47	.40	.34	.45	.39	.34	.44	.38	.33	.31														
8.0	.45	.37	.31	.45	.36	.31	.43	.36	.30	.41	.35	.30	.40	.34	.30	.28														
9.0	.42	.33	.28	.41	.33	.28	.40	.32	.27	.38	.32	.27	.37	.31	.27	.25														
10.0	.38	.31	.25	.38	.30	.25	.37	.30	.25	.35	.29	.25	.34	.28	.24	.22														



C Range: 0 - 360DEG
C Interval: 30.0DEG
Test Speed: HIGH
Temperature:25.3℃
Operators:
Test Date:2025-03-13

γ Range: 0 - 180DEG
γ Interval: 1.0DEG
Test System:EVERFINE GO-2000B_V1 SYSTEM V2.00.488
Humidity:65.0%
Test Distance:6.360m [K=1.0000]
Remarks:

WEC AND CCEC

Test:U:24.00V I:0.4893A P:11.74W PF:1.000 Freq:0Hz Lamp Flux:40.9766x1 lm					
NAME: SF16-24V-5050-70-DMX-RGBW(3000K)-B			TYPE:		WEIGHT:
SPEC.:			DIM.: Length=1m		SERIAL No.:
MFR.: OLYMPIA lighting			SUR.:		Shielding Angle:

pcc	80%			70%			50%			30%			10%			0														
pw	50%	30%	10%	50%	30%	10%	50%	30%	10%	50%	30%	10%	50%	30%	10%	0														
pfc	20%			20%			20%			20%			20%			0														
RCR	RCR:Room Cavity Ratio															Wall Exitance Coefficients(WEC)														
0.0																														
1.0	.325	.185	.058	.316	.181	.057	.301	.173	.055	.287	.165	.053	.274	.159	.051															
2.0	.300	.164	.050	.293	.161	.050	.279	.155	.048	.267	.150	.047	.255	.144	.045															
3.0	.275	.147	.044	.269	.144	.043	.257	.139	.042	.245	.134	.041	.235	.130	.040															
4.0	.253	.131	.039	.247	.129	.038	.236	.125	.037	.226	.121	.037	.216	.118	.036															
5.0	.233	.119	.034	.228	.117	.034	.218	.113	.033	.209	.110	.033	.200	.107	.032															
6.0	.215	.108	.031	.211	.106	.031	.202	.103	.030	.194	.101	.030	.186	.098	.029															
7.0	.200	.099	.028	.196	.098	.028	.188	.095	.027	.180	.093	.027	.174	.090	.026															
8.0	.186	.091	.026	.183	.090	.025	.176	.088	.025	.169	.086	.025	.163	.083	.024															
9.0	.174	.084	.024	.171	.083	.023	.165	.081	.023	.159	.079	.023	.153	.078	.022															
10.0	.164	.079	.022	.161	.078	.022	.155	.076	.021	.149	.074	.021	.144	.073	.021															

pcc	80%			70%			50%			30%			10%			0
pw	50%	30%	10%	50%	30%	10%	50%	30%	10%	50%	30%	10%	50%	30%	10%	0
pfc	20%			20%			20%			20%			20%			0
RCR	RCR:Room Cavity Ratio						Ceiling Cavity Exitance Coefficients(CCEC)									
0.0	.218	.218	.218	.187	.187	.187	.127	.127	.127	.073	.073	.073	.023	.023	.023	
1.0	.210	.184	.161	.179	.158	.139	.123	.109	.096	.071	.063	.056	.023	.020	.018	
2.0	.202	.160	.125	.173	.138	.108	.118	.095	.076	.068	.056	.044	.022	.018	.014	
3.0	.194	.143	.102	.166	.123	.089	.114	.086	.062	.066	.050	.037	.021	.016	.012	
4.0	.186	.130	.086	.160	.112	.075	.110	.078	.053	.064	.046	.031	.020	.015	.010	
5.0	.179	.119	.076	.154	.103	.066	.106	.072	.046	.061	.042	.028	.020	.014	.009	
6.0	.172	.111	.068	.148	.096	.059	.102	.067	.042	.059	.040	.025	.019	.013	.008	
7.0	.165	.104	.062	.142	.090	.054	.098	.063	.038	.057	.037	.023	.018	.012	.008	
8.0	.158	.099	.058	.136	.086	.050	.094	.060	.036	.055	.035	.021	.018	.012	.007	
9.0	.152	.094	.054	.131	.081	.047	.091	.057	.034	.053	.034	.020	.017	.011	.007	
10.0	.146	.089	.051	.126	.078	.045	.088	.055	.032	.051	.032	.019	.017	.011	.006	

C Range: 0 - 360DEG
C Interval: 30.0DEG
Test Speed: HIGH
Temperature:25.3℃
Operators:
Test Date:2025-03-13

γ Range: 0 - 180DEG
γ Interval: 1.0DEG
Test System:EVERFINE GO-2000B_V1 SYSTEM V2.00.488
Humidity:65.0%
Test Distance:6.360m [K=1.0000]
Remarks:

UGR(Unified Glare Rating) Table

Test:U:24.00V I:0.4893A P:11.74W PF:1.000 Freq:0Hz Lamp Flux:40.9766x1 lm											
NAME: SF16-24V-5050-70-DMX-RGBW(3000K)-B					TYPE:			WEIGHT:			
SPEC.:					DIM.: Length=1m			SERIAL No.:			
MFR.: OLympia lighting					SUR.:			Shielding Angle:			
ceiling/cavity	0.7	0.7	0.5	0.5	0.3	0.7	0.7	0.5	0.5	0.3	
walls	0.5	0.3	0.5	0.3	0.3	0.5	0.3	0.5	0.3	0.3	
working plane	0.2	0.2	0.2	0.2	0.2	0.2	0.2	0.2	0.2	0.2	
Room dimensions		Viewed crosswise				Viewed endwise					
x = 2H y = 2H	2H	22.7	24.2	23.0	24.5	24.7	22.6	24.1	23.0	24.4	24.7
	3H	24.4	25.8	24.8	26.1	26.4	24.3	25.7	24.7	26.0	26.3
	4H	25.2	26.5	25.6	26.8	27.2	25.1	26.4	25.5	26.7	27.1
	6H	25.9	27.1	26.2	27.4	27.8	25.7	26.9	26.1	27.3	27.6
	8H	26.1	27.3	26.5	27.7	28.0	26.0	27.2	26.4	27.5	27.9
	12H	26.3	27.5	26.7	27.8	28.2	26.1	27.3	26.6	27.7	28.0
4H	2H	23.4	24.7	23.7	25.0	25.3	23.3	24.6	23.7	24.9	25.3
	3H	25.3	26.4	25.7	26.8	27.2	25.2	26.3	25.6	26.7	27.1
	4H	26.2	27.2	26.6	27.6	28.0	26.1	27.1	26.5	27.5	27.9
	6H	27.0	27.9	27.5	28.4	28.8	26.9	27.8	27.3	28.2	28.7
	8H	27.3	28.2	27.8	28.6	29.1	27.2	28.1	27.7	28.5	29.0
	12H	27.6	28.4	28.1	28.9	29.4	27.4	28.2	27.9	28.7	29.2
8H	4H	26.5	27.4	27.0	27.8	28.3	26.4	27.3	26.9	27.8	28.2
	6H	27.5	28.3	28.0	28.7	29.2	27.4	28.1	27.9	28.6	29.1
	8H	28.0	28.6	28.5	29.1	29.7	27.8	28.5	28.4	29.0	29.5
	12H	28.4	28.9	28.9	29.5	30.0	28.2	28.8	28.7	29.3	29.8
12H	4H	26.6	27.4	27.0	27.8	28.3	26.5	27.3	27.0	27.7	28.2
	6H	27.6	28.3	28.2	28.8	29.3	27.5	28.2	28.0	28.7	29.2
	8H	28.2	28.7	28.7	29.2	29.8	28.0	28.6	28.5	29.1	29.6
Variations with the observer position at spacings(CIE Pub.117):											
S = 1.0H		+ 0.1 / - 0.2				+ 0.1 / - 0.2					
1.5H		+ 0.2 / - 0.3				+ 0.2 / - 0.3					
2.0H		+ 0.1 / - 0.3				+ 0.1 / - 0.3					

CIE Pub.117, 40.98 lm Total Lamp Luminous Flux Correct (8log(F/F0) = -11.1)
Area: 0.0165 m2

C Range: 0 - 360DEG
C Interval: 30.0DEG
Test Speed: HIGH
Temperature:25.3℃
Operators:
Test Date:2025-03-13

γ Range: 0 - 180DEG
γ Interval: 1.0DEG
Test System:EVERFINE GO-2000B_V1 SYSTEM V2.00.488
Humidity:65.0%
Test Distance:6.360m [K=1.0000]
Remarks:

UTILIZATION FACTORS TABLE

Test:U:24.00V I:0.4893A P:11.74W PF:1.000 Freq:0Hz Lamp Flux:40.9766x1 lm		
NAME: SF16-24V-5050-70-DMX-RGBW(3000K)-B	TYPE:	WEIGHT:
SPEC.:	DIM.: Length=1m	SERIAL No.:
MFR.: OLympia lighting	SUR.:	Shielding Angle:

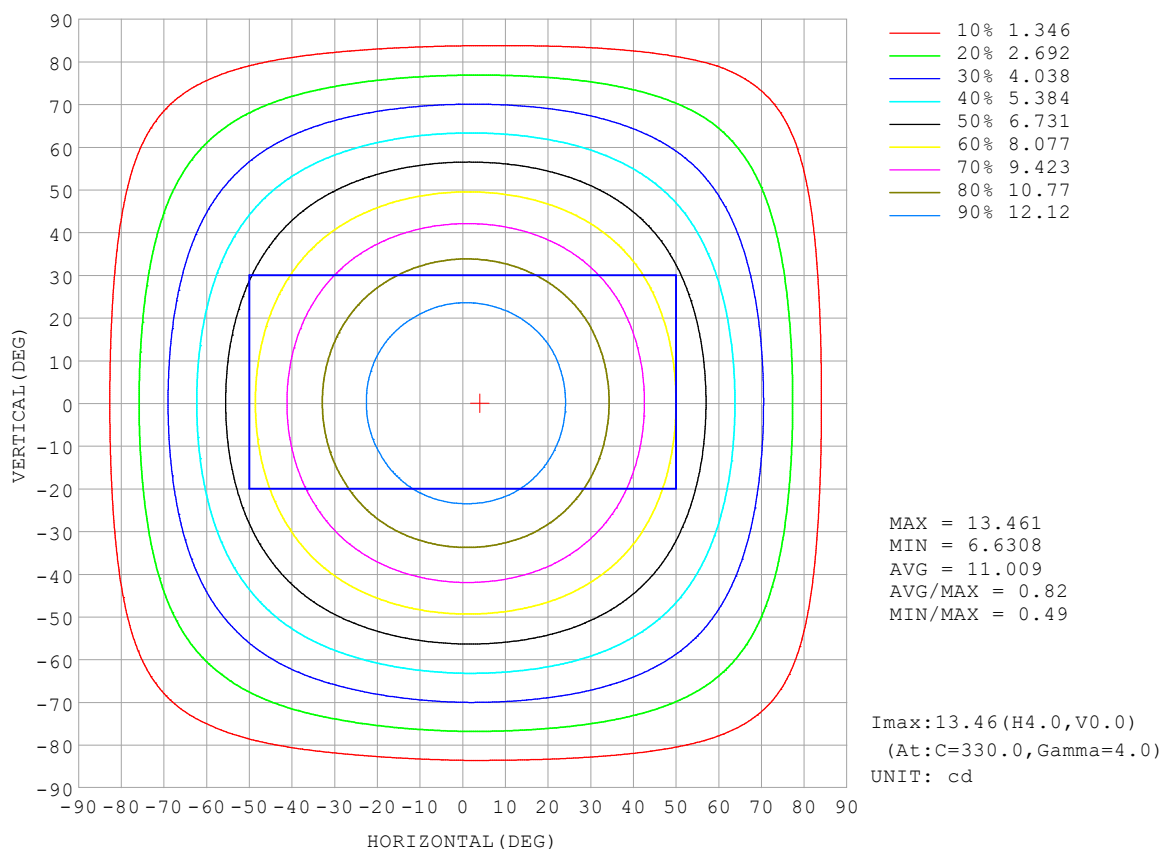
REFLECTANCE										
Ceiling	0.8	0.8	0.8	0.7	0.7	0.7	0.5	0.5	0.5	0
Walls	0.7	0.5	0.3	0.7	0.5	0.3	0.7	0.5	0.3	0
Working plane	0.2	0.2	0.2	0.2	0.2	0.2	0.2	0.2	0.2	0
ROOM INDEX	UTILIZATION FACTORS (PERCENT) $k(RI) \times RCR = 5$									
$k = 0.60$	56	44	37	55	44	37	54	43	37	30
0.80	66	54	46	64	53	46	62	52	45	38
1.00	74	62	55	72	62	55	70	63	54	46
1.25	81	70	63	79	69	62	76	67	61	53
1.50	86	76	68	84	75	68	80	72	66	58
2.00	93	84	77	91	82	76	87	80	74	66
2.50	97	89	82	94	87	81	90	84	79	70
3.00	100	93	87	98	91	86	93	88	83	74
4.00	104	98	93	102	96	92	97	92	89	78
5.00	107	102	97	104	100	96	99	95	92	82
ROOM INDEX	UF(total)									Direct
According to DIN EN 13032-2 2004			Suspended					SHRNOM = 1.25		

C Range: 0 - 360DEG
 C Interval: 30.0DEG
 Test Speed: HIGH
 Temperature: 25.3°C
 Operators:
 Test Date: 2025-03-13

γ Range: 0 - 180DEG
 γ Interval: 1.0DEG
 Test System: EVERFINE GO-2000B_V1 SYSTEM V2.00.488
 Humidity: 65.0%
 Test Distance: 6.360m [K=1.0000]
 Remarks:

ISOCANDELA DIAGRAM

Test:U:24.00V I:0.4893A P:11.74W PF:1.000 Freq:0Hz Lamp Flux:40.9766x1 lm		
NAME: SF16-24V-5050-70-DMX-RGBW(3000K)-B	TYPE:	WEIGHT:
SPEC.:	DIM.: Length=1m	SERIAL No.:
MFR.: OLympia lighting	SUR.:	Shielding Angle:

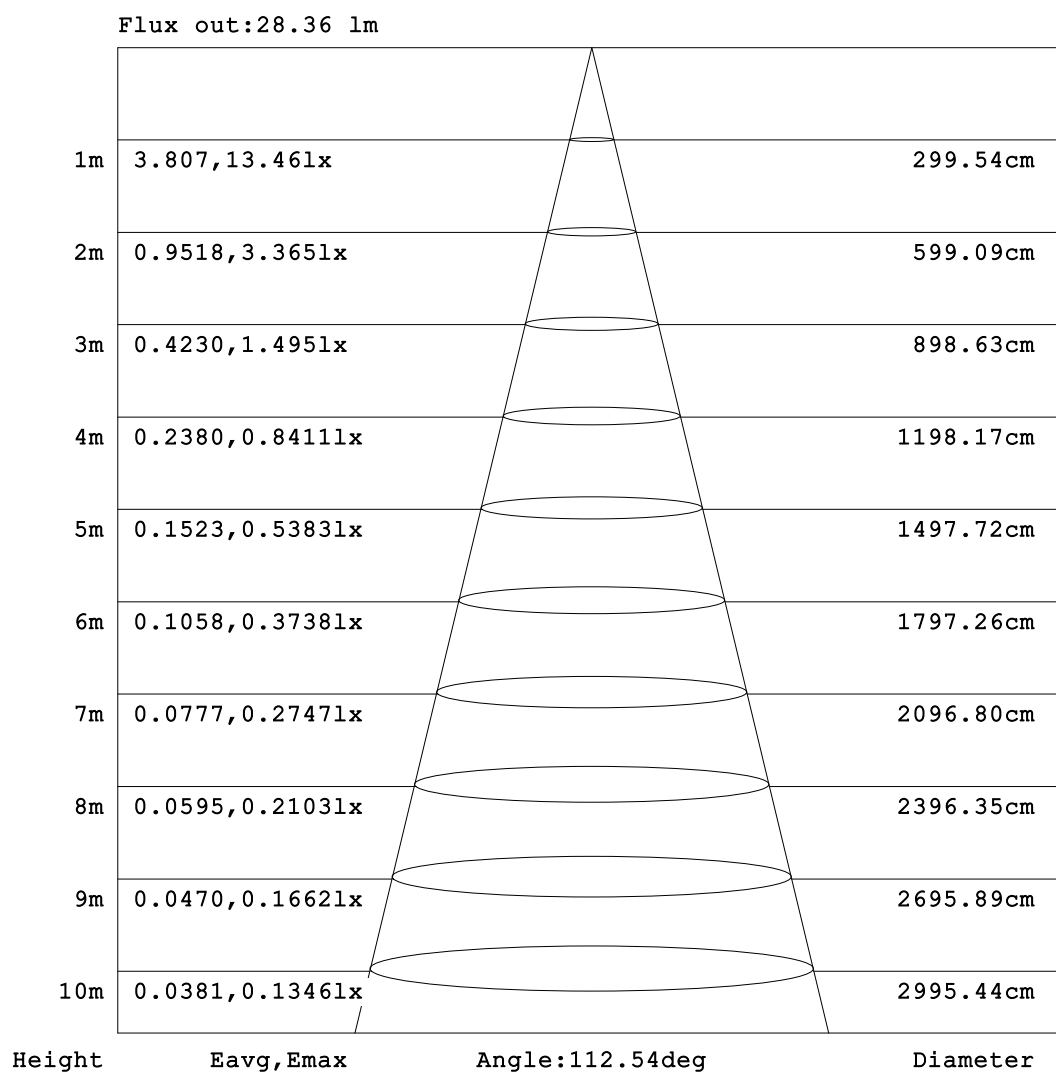


C Range: 0 - 360DEG
C Interval: 30.0DEG
Test Speed: HIGH
Temperature:25.3℃
Operators:
Test Date:2025-03-13

γ Range: 0 - 180DEG
γ Interval: 1.0DEG
Test System:EVERFINE GO-2000B_V1 SYSTEM V2.00.488
Humidity:65.0%
Test Distance:6.360m [K=1.0000]
Remarks:

AAI Figure

Test:U:24.00V I:0.4893A P:11.74W PF:1.000 Freq:0Hz Lamp Flux:40.9766x1 lm		
NAME: SF16-24V-5050-70-DMX-RGBW(3000K)-B	TYPE:	WEIGHT:
SPEC.:	DIM.: Length=1m	SERIAL No.:
MFR.: OLympia lighting	SUR.:	Shielding Angle:



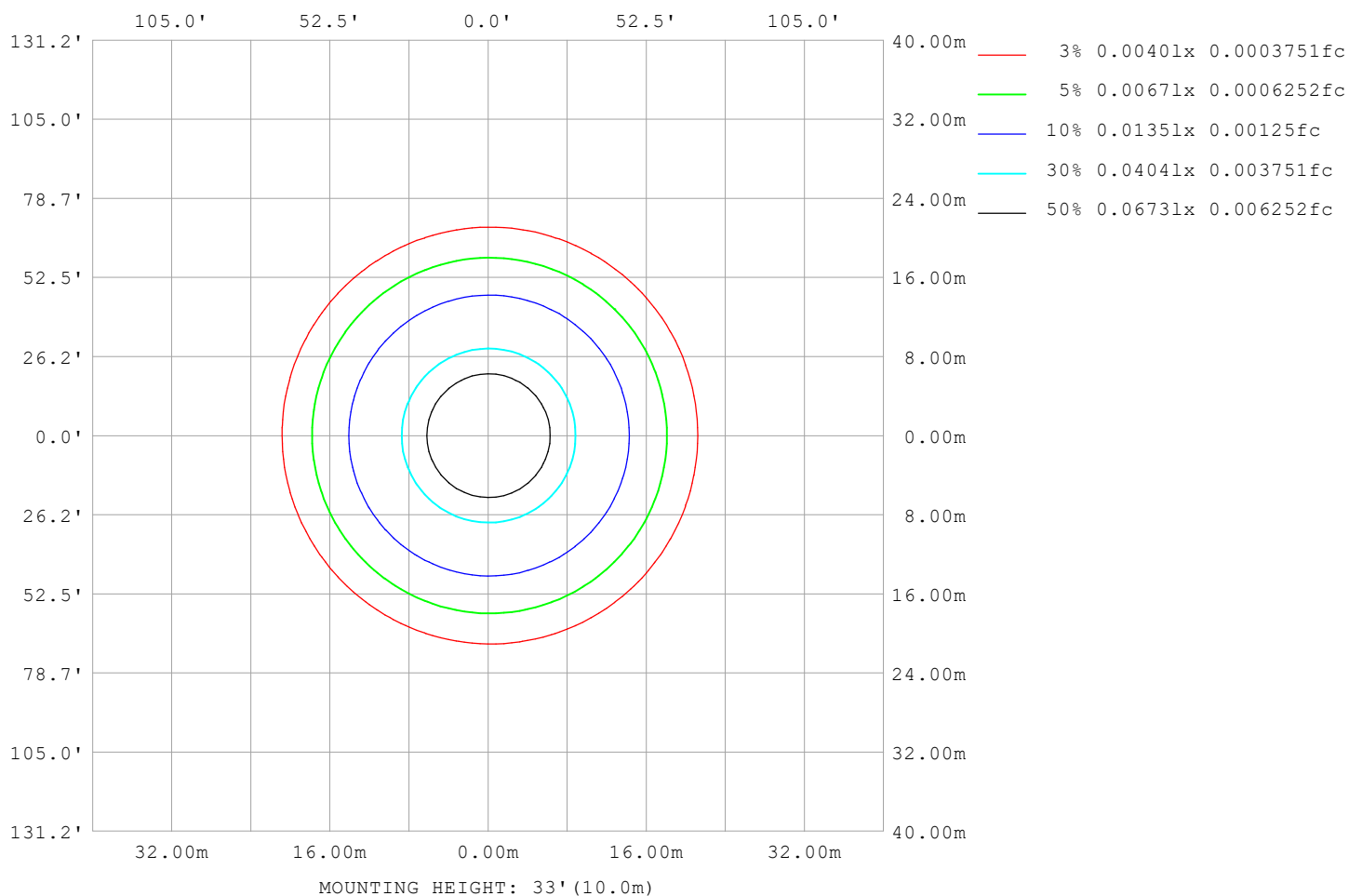
Note:The Curves indicate the illuminated area and the average illumination when the luminaire is at different distance.

C Range: 0 - 360DEG
C Interval: 30.0DEG
Test Speed: HIGH
Temperature:25.3℃
Operators:
Test Date:2025-03-13

γ Range: 0 - 180DEG
γ Interval: 1.0DEG
Test System:EVERFINE GO-2000B_V1 SYSTEM V2.00.488
Humidity:65.0%
Test Distance:6.360m [K=1.0000]
Remarks:

ISOLUX DIAGRAM

Test:U:24.00V I:0.4893A P:11.74W PF:1.000 Freq:0Hz Lamp Flux:40.9766x1 lm		
NAME: SF16-24V-5050-70-DMX-RGBW(3000K)-B	TYPE:	WEIGHT:
SPEC.:	DIM.: Length=1m	SERIAL No.:
MFR.: OLympia lighting	SUR.:	Shielding Angle:



C Range: 0 - 360DEG
C Interval: 30.0DEG
Test Speed: HIGH
Temperature: 25.3°C
Operators:
Test Date: 2025-03-13

γ Range: 0 - 180DEG
γ Interval: 1.0DEG
Test System: EVERFINE GO-2000B_V1 SYSTEM V2.00.488
Humidity: 65.0%
Test Distance: 6.360m [K=1.0000]
Remarks:

LED Avg.L Report

Test:U:24.00V I:0.4893A P:11.74W PF:1.000 Freq:0Hz Lamp Flux:40.9766x1 lm		
NAME: SF16-24V-5050-70-DMX-RGBW(3000K)-B	TYPE:	WEIGHT:
SPEC.:	DIM.: Length=1m	SERIAL No.:
MFR.: OLympia lighting	SUR.:	Shielding Angle:

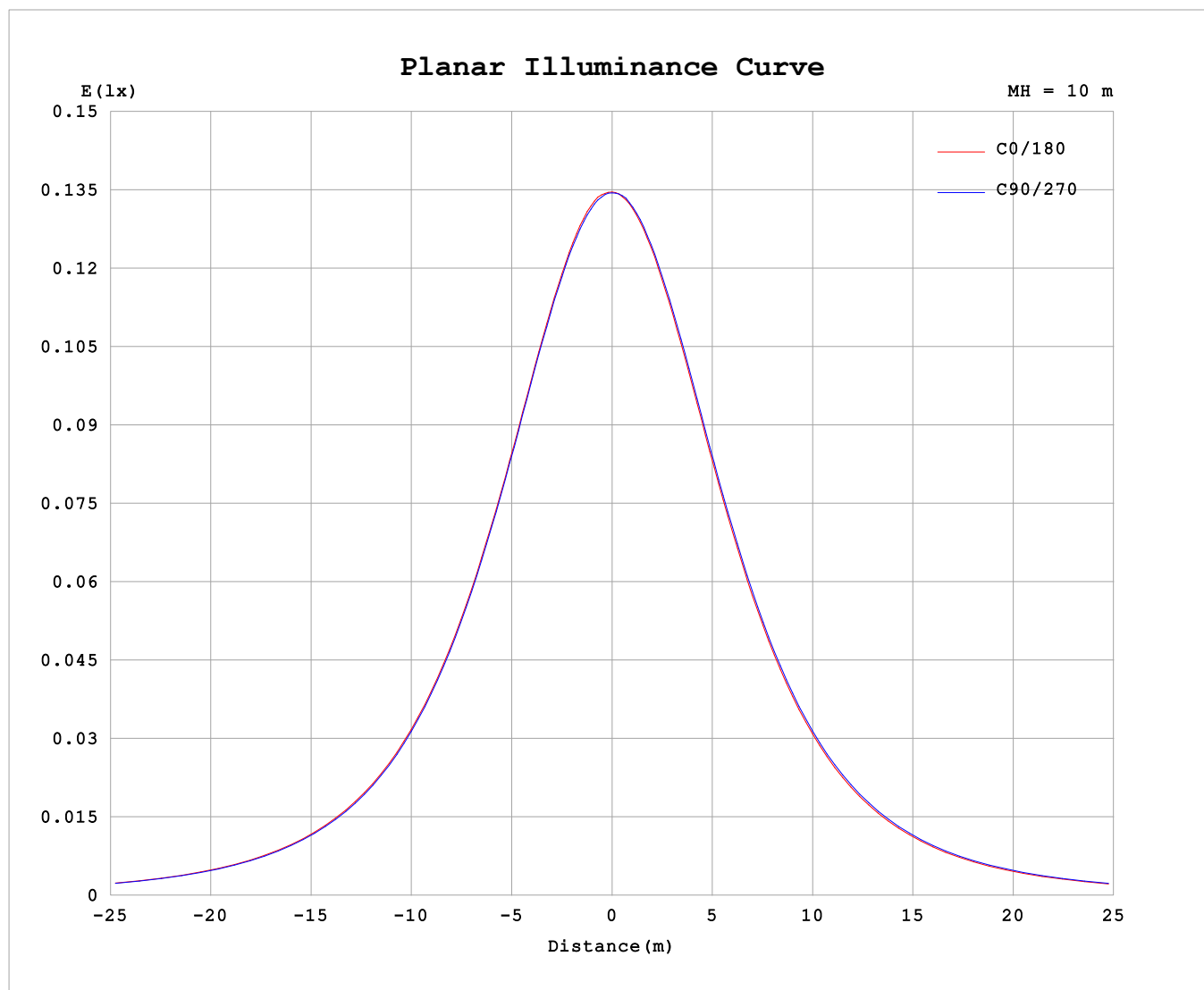
AvgL	cd/m2
L_0~180 (65) av	716
L_0~180 (75) av	703
L_0~180 (85) av	717
L_90~270 (65) av	723
L_90~270 (75) av	717
L_90~270 (85) av	755
L_45 (65) av	720
L_45 (75) av	708
L_45 (85) av	733

Standard: GB/T 29293-2012

C Range: 0 - 360DEG
C Interval: 30.0DEG
Test Speed: HIGH
Temperature:25.3℃
Operators:
Test Date:2025-03-13

γ Range: 0 - 180DEG
γ Interval: 1.0DEG
Test System:EVERFINE GO-2000B_V1 SYSTEM V2.00.488
Humidity:65.0%
Test Distance:6.360m [K=1.0000]
Remarks:

Planar Illuminance Curve



C Range: 0 - 360DEG
C Interval: 30.0DEG
Test Speed: HIGH
Temperature: 25.3 °C
Operators:
Test Date: 2025-03-13

γ Range: 0 - 180DEG
 γ Interval: 1.0DEG
Test System: EVERFINE GO-2000B_V1 SYSTEM V2.00.488
Humidity: 65.0%
Test Distance: 6.360m [K=1.0000]
Remarks:

LUMINOUS DISTRIBUTION INTENSITY DATA

Test:U:24.00V I:0.4893A P:11.74W PF:1.000 Freq:0Hz Lamp Flux:40.9766x1 lm											
NAME: SF16-24V-5050-70-DMX-RGBW(3000K)-B						TYPE:			WEIGHT:		
SPEC.:						DIM.: Length=1m			SERIAL No.:		
MFR.: OLYMPIA lighting						SUR.:			Shielding Angle:		

Table--1

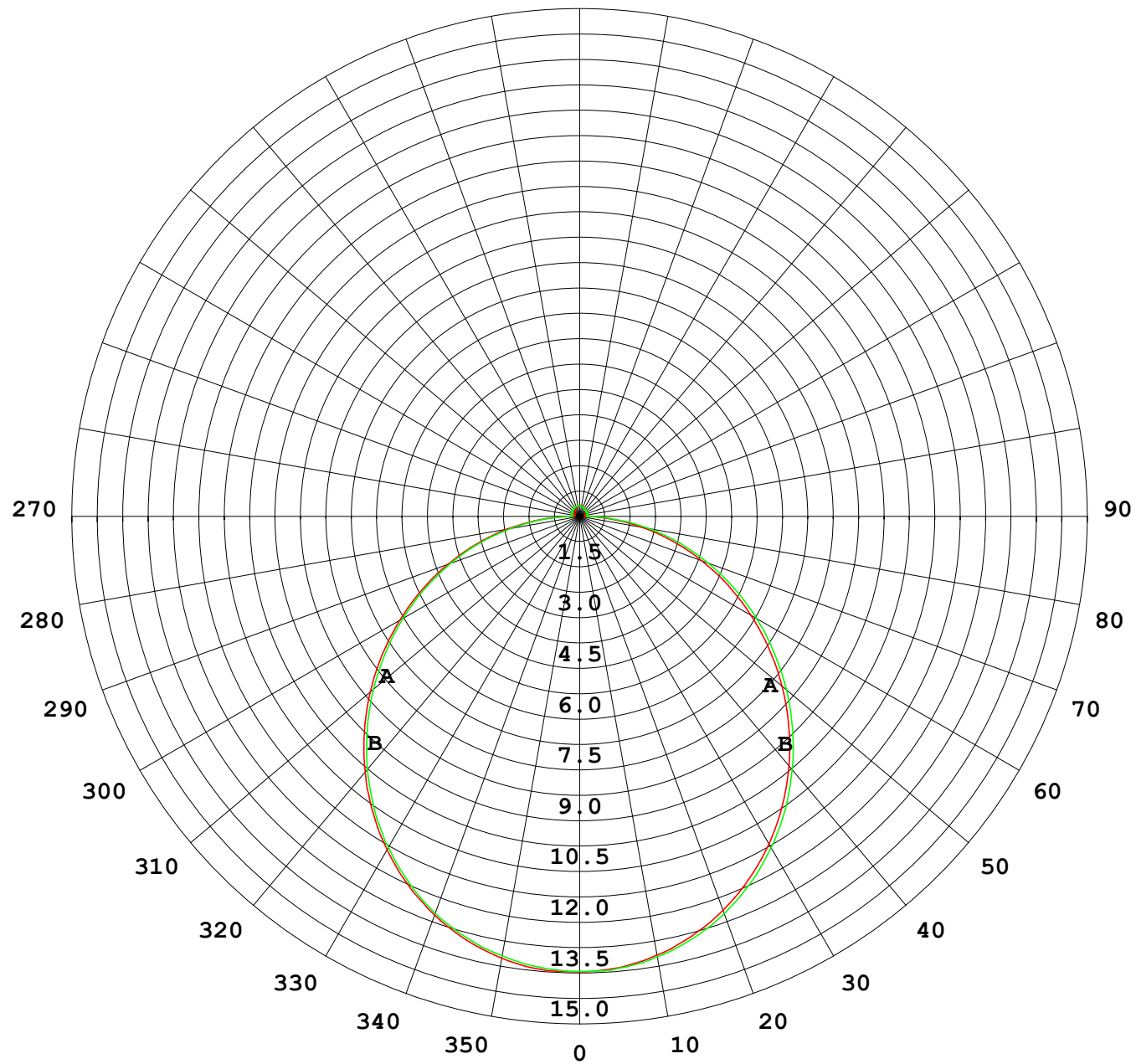
UNIT: cd

C (DEG) γ (DEG)	0	30	60	90	120	150	180	210	240	270	300	330							
0	13.5	13.5	13.5	13.5	13.5	13.5	13.5	13.5	13.5	13.5	13.5	13.5							
5	13.4	13.4	13.4	13.4	13.4	13.4	13.4	13.4	13.4	13.4	13.4	13.4							
10	13.3	13.2	13.2	13.2	13.2	13.2	13.2	13.2	13.2	13.2	13.2	13.2							
15	12.9	12.9	12.9	12.9	12.9	12.8	12.8	12.9	12.9	12.9	12.9	13.0							
20	12.5	12.5	12.5	12.5	12.4	12.4	12.4	12.4	12.4	12.5	12.5	12.6							
25	12.0	12.0	12.0	11.9	11.9	11.8	11.8	11.9	11.9	12.0	12.0	12.0							
30	11.4	11.4	11.4	11.3	11.3	11.2	11.2	11.2	11.2	11.3	11.4	11.4							
35	10.7	10.7	10.6	10.6	10.5	10.4	10.4	10.5	10.5	10.6	10.6	10.7							
40	9.86	9.86	9.84	9.76	9.69	9.61	9.62	9.65	9.70	9.78	9.84	9.88							
45	8.99	9.00	8.96	8.88	8.80	8.73	8.73	8.76	8.83	8.90	8.98	9.02							
50	8.07	8.08	8.04	7.96	7.87	7.80	7.80	7.83	7.90	7.99	8.05	8.10							
55	7.12	7.12	7.08	6.99	6.89	6.82	6.83	6.86	6.93	7.02	7.10	7.15							
60	6.14	6.14	6.10	6.03	5.90	5.83	5.84	5.88	5.95	6.04	6.12	6.17							
65	5.14	5.15	5.12	5.04	4.90	4.83	4.85	4.88	4.95	5.05	5.13	5.18							
70	4.13	4.15	4.11	4.05	3.91	3.84	3.84	3.88	3.96	4.04	4.13	4.18							
75	3.15	3.15	3.11	3.07	2.92	2.84	2.85	2.89	2.97	3.06	3.14	3.20							
80	2.17	2.16	2.10	2.05	1.94	1.85	1.87	1.91	1.98	2.07	2.15	2.21							
85	1.16	1.14	1.09	1.08	0.96	0.89	0.90	0.93	1.00	1.10	1.19	1.24							
90	0.38	0.36	0.26	0.24	0.26	0.24	0.24	0.26	0.23	0.24	0.31	0.40							
95	0.17	0.20	0.20	0.24	0.23	0.20	0.16	0.18	0.21	0.21	0.20	0.18							
100	0.17	0.21	0.20	0.24	0.23	0.21	0.17	0.18	0.22	0.21	0.22	0.17							
105	0.17	0.22	0.21	0.25	0.23	0.22	0.18	0.18	0.23	0.22	0.23	0.17							
110	0.19	0.23	0.22	0.25	0.23	0.23	0.19	0.19	0.24	0.23	0.23	0.17							
115	0.20	0.24	0.23	0.26	0.23	0.24	0.20	0.19	0.24	0.23	0.24	0.19							
120	0.21	0.25	0.24	0.27	0.24	0.25	0.21	0.20	0.25	0.24	0.24	0.20							
125	0.22	0.25	0.24	0.27	0.25	0.26	0.22	0.21	0.25	0.24	0.24	0.20							
130	0.23	0.26	0.25	0.28	0.26	0.27	0.24	0.22	0.26	0.25	0.25	0.22							
135	0.24	0.27	0.26	0.29	0.26	0.27	0.25	0.23	0.27	0.25	0.26	0.22							
140	0.25	0.28	0.27	0.29	0.27	0.28	0.26	0.24	0.28	0.26	0.27	0.23							
145	0.26	0.29	0.28	0.31	0.28	0.29	0.27	0.25	0.28	0.27	0.27	0.24							
150	0.27	0.29	0.29	0.32	0.29	0.30	0.28	0.26	0.29	0.27	0.28	0.25							
155	0.28	0.30	0.31	0.32	0.29	0.31	0.29	0.27	0.30	0.28	0.29	0.26							
160	0.29	0.31	0.31	0.32	0.29	0.31	0.30	0.28	0.31	0.29	0.30	0.27							
165	0.30	0.31	0.31	0.32	0.30	0.31	0.31	0.29	0.31	0.29	0.31	0.28							
170	0.31	0.31	0.31	0.32	0.31	0.31	0.31	0.30	0.32	0.30	0.32	0.29							
175	0.31	0.31	0.31	0.32	0.31	0.31	0.31	0.30	0.32	0.31	0.32	0.31							
180	0.31	0.31	0.31	0.32	0.31	0.31	0.31	0.31	0.31	0.32	0.32	0.31							

C Range: 0 - 360DEG
C Interval: 30.0DEG
Test Speed: HIGH
Temperature:25.3℃
Operators:
Test Date:2025-03-13

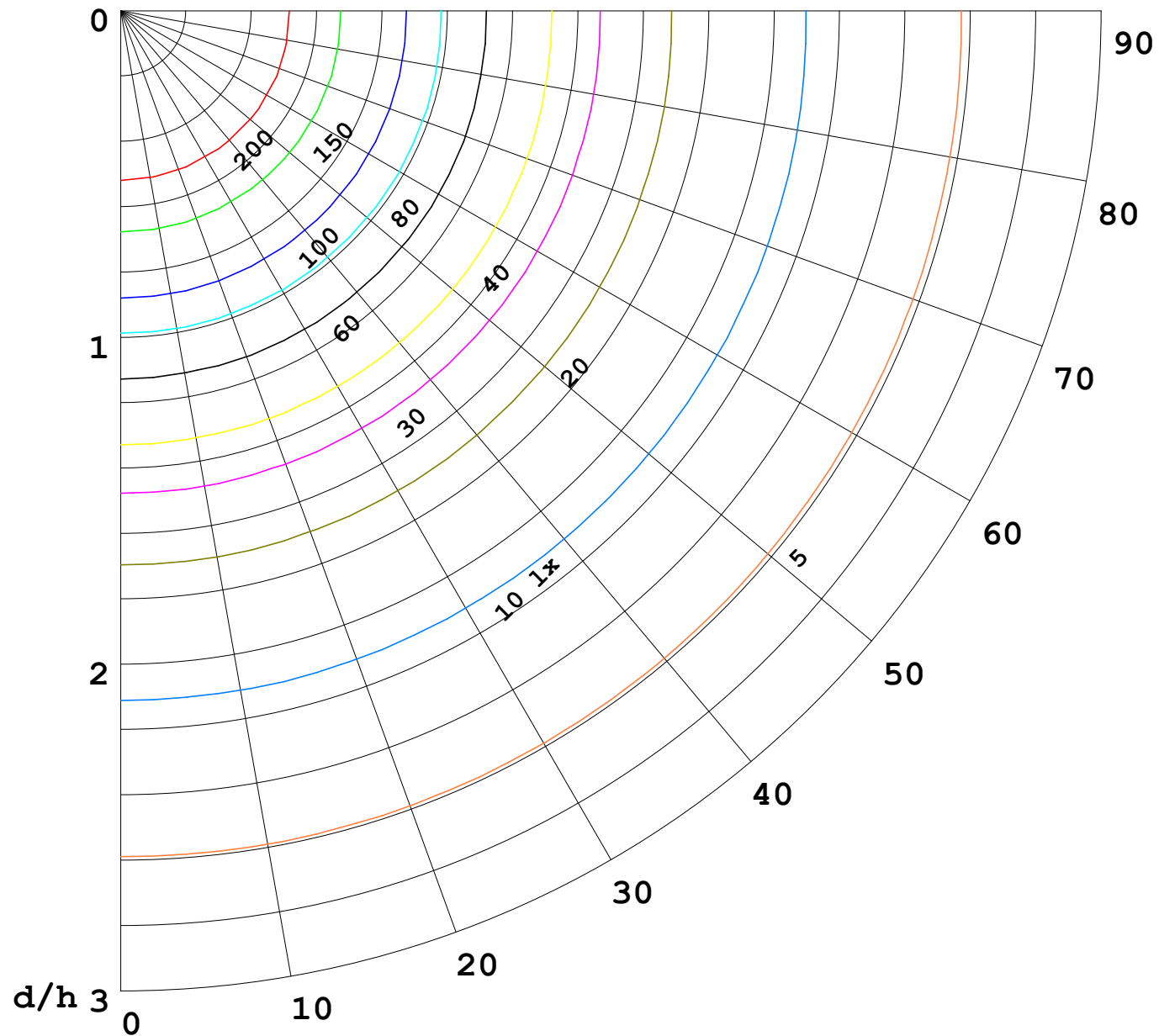
γ Range: 0 - 180DEG
γ Interval: 1.0DEG
Test System:EVERFINE GO-2000B_V1 SYSTEM V2.00.488
Humidity:65.0%
Test Distance:6.360m [K=1.0000]
Remarks:

I (cd)



1000 lm

$\kappa = 1$



F = 1000 lm
 K = 0.7
 Hcc = 0.8 m
 Hfc = 0.0 m
 Eave = 100 lx

	Pcc	Pw	Pfc
—————	70	50	30
—————	50	30	20

