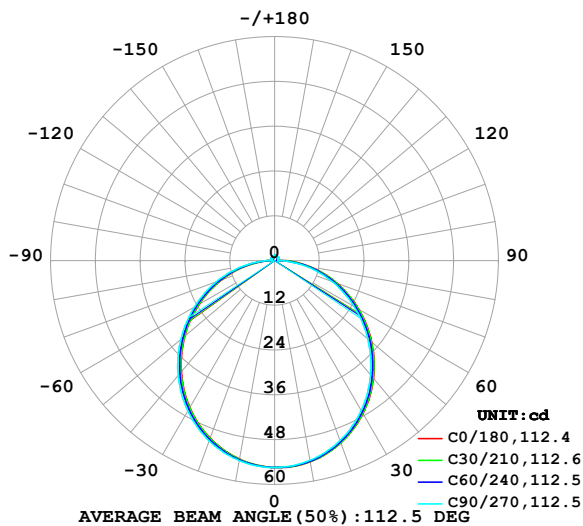


LUMINAIRE PHOTOMETRIC TEST REPORT

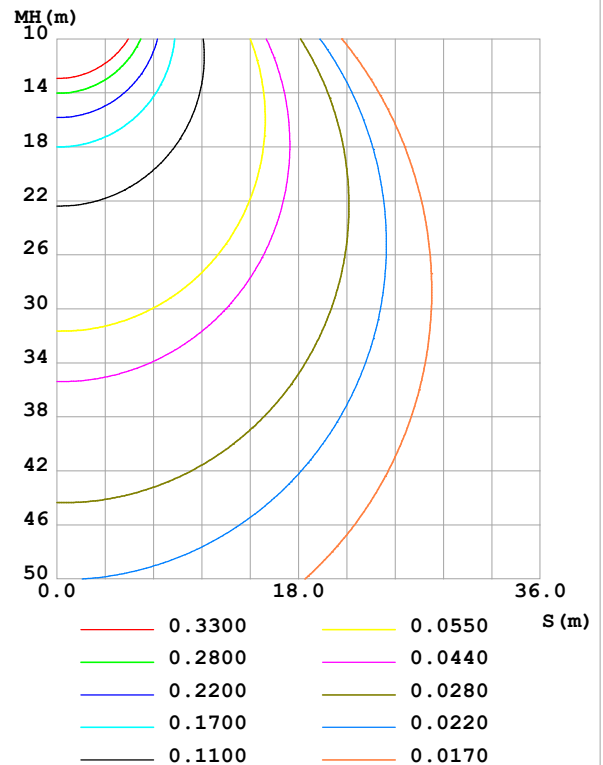
Test:U:24.00V I:0.2361A P:5.666W PF:1.000 Freq:0Hz Lamp Flux:169.012x1 lm		
NAME: SF16-24V-5050-70-DMX-RGBW(2700K)-W	TYPE:	WEIGHT:
SPEC.:	DIM.: Length=1m	SERIAL No.:
MFR.: OLympia lighting	SUR.:	Shielding Angle:

DATA OF LAMP		PHOTOMETRIC DATA Eff: 29.83 lm/W			
MODEL	5050	Imax(cd)	55.48	S/MH(C0/180)	1.23
NOMINAL POWER(W)		LOR(%)	100.0	S/MH(C90/270)	1.25
RATED VOLTAGE(V)	24	TOTAL FLUX(lm)	169.01	η UP,DN(C0-180)	1.9,48.3
NOMINAL FLUX(lm)	169.012	CIE CLASS	DIRECT	η UP,DN(C180-360)	1.9,47.9
LAMPS INSIDE	1	η up(%)	3.8	CIBSE SHR NOM	1.25
TEST VOLTAGE(V)		η down(%)	96.2	CIBSE SHR MAX	1.35

LUMINOUS INTENSITY DISTRIBUTION DIAGRAM



C0 PLANE ISOLUX DIAGRAM (UNIT:lx)



C Range: 0 - 360DEG
C Interval: 30.0DEG
Test Speed: HIGH
Temperature:25.3℃
Operators:
Test Date:2025-03-12

γ Range: 0 - 180DEG
 γ Interval: 1.0DEG
Test System:EVERFINE GO-2000B_V1 SYSTEM V2.00.488
Humidity:65.0%
Test Distance:6.360m [K=1.0000]
Remarks:

ZONAL FLUX DIAGRAM

ZONAL FLUX DIAGRAM:

γ	C0	C45	C90	C135	C180	C225	C270	C315	γ	Φ zone	Φ total	%lum, lamp
10	54.75	54.66	54.39	54.11	54.04	54.14	54.43	54.71	0- 10	5.243	5.243	3.1,3.1
20	51.96	51.82	51.32	50.80	50.62	50.86	51.39	51.91	10- 20	14.99	20.23	12,12
30	47.36	47.11	46.39	45.70	45.45	45.80	46.55	47.27	20- 30	22.63	42.86	25.4,25.4
40	41.25	40.89	40.00	39.18	38.91	39.32	40.23	41.12	30- 40	27.18	70.03	41.4,41.4
50	33.99	33.58	32.58	31.66	31.38	31.82	32.83	33.84	40- 50	28.17	98.21	58.1,58.1
60	26.02	25.61	24.57	23.59	23.32	23.77	24.80	25.90	50- 60	25.71	123.9	73.3,73.3
70	17.82	17.41	16.39	15.38	15.11	15.56	16.61	17.68	60- 70	20.40	144.3	85.4,85.4
80	9.691	9.275	8.262	7.302	7.048	7.470	8.486	9.544	70- 80	13.12	157.4	93.2,93.2
90	2.783	2.069	0.8935	1.300	1.505	1.316	0.9203	2.276	80- 90	5.088	162.5	96.2,96.2
100	0.7088	0.7362	0.9223	0.8775	0.6886	0.8432	0.9482	0.8172	90-100	1.068	163.6	96.8,96.8
110	0.8133	0.8533	0.9714	0.9565	0.7844	0.9257	1.017	0.8876	100-110	0.9090	164.5	97.3,97.3
120	0.9207	0.9763	1.043	1.030	0.8803	0.9980	1.081	0.9551	110-120	0.9372	165.4	97.9,97.9
130	1.014	1.066	1.110	1.099	0.9704	1.072	1.121	1.030	120-130	0.9197	166.4	98.4,98.4
140	1.095	1.131	1.176	1.169	1.069	1.141	1.167	1.077	130-140	0.8469	167.2	98.9,98.9
150	1.179	1.199	1.254	1.239	1.159	1.208	1.245	1.146	140-150	0.7309	167.9	99.4,99.4
160	1.258	1.276	1.337	1.308	1.255	1.274	1.285	1.234	150-160	0.5732	168.5	99.7,99.7
170	1.301	1.345	1.366	1.357	1.310	1.334	1.329	1.316	160-170	0.3695	168.9	99.9,99.9
180	1.342	1.368	1.381	1.374	1.339	1.368	1.378	1.372	170-180	0.1287	169.0	100,100
DEG	LUMINOUS INTENSITY:cd									UNIT:lm		

Conical surface Flux(90deg): 84.221 lm

%lum = 49.8%

%lamp = 49.8%

Conical surface Flux(130deg): 134.93 lm

%lum = 79.8%

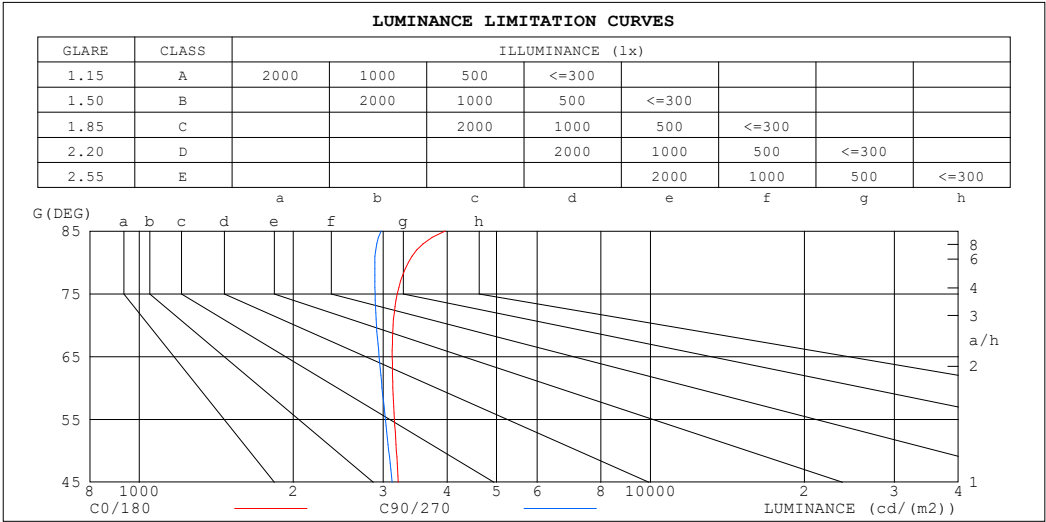
%lamp = 79.8%

C Range: 0 - 360DEG
 C Interval: 30.0DEG
 Test Speed: HIGH
 Temperature:25.3℃
 Operators:
 Test Date:2025-03-12

γ Range: 0 - 180DEG
 γ Interval: 1.0DEG
 Test System:EVERFINE GO-2000B_V1 SYSTEM V2.00.488
 Humidity:65.0%
 Test Distance:6.360m [K=1.0000]
 Remarks:

LUMINANCE LIMITATION CURVES

Test:U:24.00V I:0.2361A P:5.666W PF:1.000 Freq:0Hz Lamp Flux:169.012x1 lm		
NAME: SF16-24V-5050-70-DMX-RGBW(2700K)-W	TYPE:	WEIGHT:
SPEC.:	DIM.: Length=1m	SERIAL No.:
MFR.: OLympia lighting	SUR.:	Shielding Angle:



LUMINANCE cd/(m2)		
G (DEG)	C0/180	C90/270
85	3966	2973
80	3360	2888
75	3196	2891
70	3137	2909
65	3125	2944
60	3133	2983
55	3155	3028
50	3184	3076
45	3212	3123

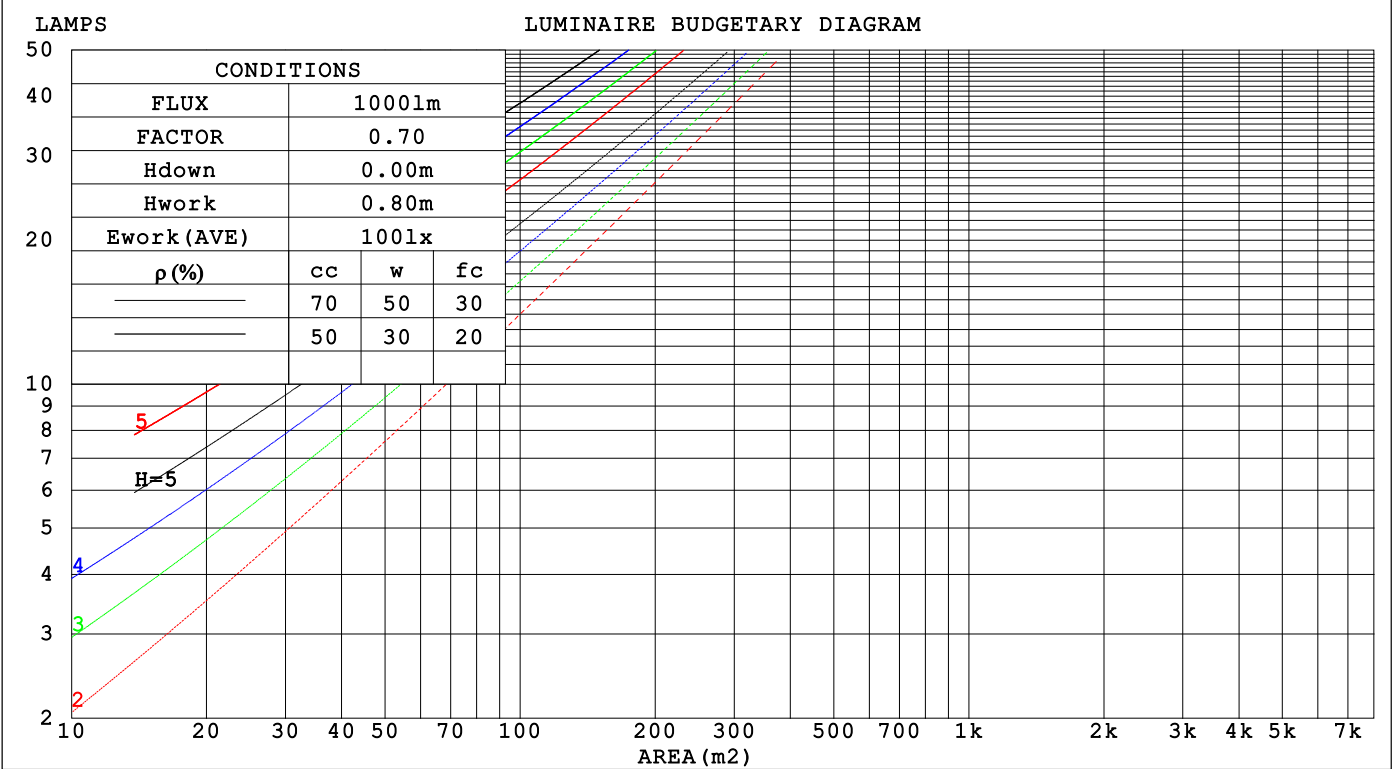
C Range: 0 - 360DEG
C Interval: 30.0DEG
Test Speed: HIGH
Temperature:25.3℃
Operators:
Test Date:2025-03-12

γ Range: 0 - 180DEG
γ Interval: 1.0DEG
Test System:EVERFINE GO-2000B_V1 SYSTEM V2.00.488
Humidity:65.0%
Test Distance:6.360m [K=1.0000]
Remarks:

CU AND LUMINAIRE BUDGETARY ESTIMATE DIAGRAM

Test:U:24.00V I:0.2361A P:5.666W PF:1.000 Freq:0Hz Lamp Flux:169.012x1 lm		
NAME: SF16-24V-5050-70-DMX-RGBW(2700K)-W	TYPE:	WEIGHT:
SPEC.:	DIM.: Length=1m	SERIAL No.:
MFR.: OLYMPIA lighting	SUR.:	Shielding Angle:

pcc	80%			70%			50%			30%			10%			0
pw	50%	30%	10%	50%	30%	10%	50%	30%	10%	50%	30%	10%	50%	30%	10%	0
pfc	20%			20%			20%			20%			20%			0
RCR	RCR:Room Cavity Ratio			Coefficients of Utilization(CU)												
0.0	1.18	1.18	1.18	1.15	1.15	1.15	1.09	1.09	1.09	1.04	1.04	1.04	.99	.99	.99	.96
1.0	1.02	.98	.94	.99	.95	.92	.94	.91	.88	.90	.87	.85	.86	.83	.81	.79
2.0	.89	.82	.76	.86	.80	.74	.82	.77	.72	.78	.74	.70	.75	.71	.68	.65
3.0	.78	.69	.62	.76	.68	.62	.72	.66	.60	.69	.63	.59	.66	.61	.57	.55
4.0	.69	.60	.53	.67	.59	.52	.64	.57	.51	.61	.55	.50	.59	.53	.49	.46
5.0	.61	.52	.45	.60	.51	.45	.57	.50	.44	.55	.48	.43	.53	.47	.42	.40
6.0	.55	.46	.39	.54	.45	.39	.52	.44	.38	.50	.43	.38	.48	.42	.37	.35
7.0	.50	.41	.35	.49	.40	.35	.47	.39	.34	.45	.38	.33	.43	.38	.33	.31
8.0	.45	.37	.31	.45	.36	.31	.43	.36	.30	.41	.35	.30	.40	.34	.30	.28
9.0	.42	.33	.28	.41	.33	.28	.40	.32	.27	.38	.32	.27	.37	.31	.27	.25
10.0	.38	.31	.25	.38	.30	.25	.37	.30	.25	.35	.29	.24	.34	.28	.24	.22



C Range: 0 - 360DEG
C Interval: 30.0DEG
Test Speed: HIGH
Temperature:25.3℃
Operators:
Test Date:2025-03-12

γ Range: 0 - 180DEG
γ Interval: 1.0DEG
Test System:EVERFINE GO-2000B_V1 SYSTEM V2.00.488
Humidity:65.0%
Test Distance:6.360m [K=1.0000]
Remarks:

WEC AND CCEC

Test:U:24.00V I:0.2361A P:5.666W PF:1.000 Freq:0Hz Lamp Flux:169.012x1 lm		
NAME: SF16-24V-5050-70-DMX-RGBW(2700K)-W	TYPE:	WEIGHT:
SPEC.:	DIM.: Length=1m	SERIAL No.:
MFR.: OLYMPIA lighting	SUR.:	Shielding Angle:

pcc	80%			70%			50%			30%			10%			0														
pw	50%	30%	10%	50%	30%	10%	50%	30%	10%	50%	30%	10%	50%	30%	10%	0														
pfc	20%			20%			20%			20%			20%			0														
RCR	RCR:Room Cavity Ratio															Wall Exitance Coefficients(WEC)														
0.0																														
1.0	.326	.185	.059	.318	.181	.058	.302	.173	.055	.288	.166	.053	.275	.159	.051															
2.0	.301	.165	.051	.293	.162	.050	.279	.155	.048	.267	.150	.047	.255	.144	.045															
3.0	.275	.147	.044	.269	.144	.043	.257	.139	.042	.245	.134	.041	.235	.130	.040															
4.0	.253	.131	.039	.247	.129	.038	.236	.125	.037	.226	.121	.037	.216	.118	.036															
5.0	.233	.119	.034	.228	.117	.034	.218	.113	.033	.209	.110	.033	.200	.107	.032															
6.0	.215	.108	.031	.211	.106	.031	.202	.103	.030	.193	.101	.030	.186	.098	.029															
7.0	.200	.099	.028	.196	.097	.028	.188	.095	.027	.180	.092	.027	.173	.090	.026															
8.0	.186	.091	.026	.183	.090	.025	.175	.088	.025	.169	.085	.025	.162	.083	.024															
9.0	.174	.084	.024	.171	.083	.023	.165	.081	.023	.158	.079	.023	.153	.078	.022															
10.0	.164	.079	.022	.161	.078	.022	.155	.076	.021	.149	.074	.021	.144	.072	.021															

pcc	80%			70%			50%			30%			10%			0
pw	50%	30%	10%	50%	30%	10%	50%	30%	10%	50%	30%	10%	50%	30%	10%	0
pfc	20%			20%			20%			20%			20%			0
RCR	RCR:Room Cavity Ratio						Ceiling Cavity Exitance Coefficients (CCEC)									
0.0	.220	.220	.220	.188	.188	.188	.128	.128	.128	.074	.074	.074	.024	.024	.024	
1.0	.211	.185	.163	.180	.159	.140	.123	.110	.097	.071	.063	.056	.023	.020	.018	
2.0	.203	.162	.127	.174	.139	.109	.119	.096	.076	.069	.056	.045	.022	.018	.015	
3.0	.195	.144	.103	.167	.124	.090	.115	.086	.063	.066	.050	.037	.021	.016	.012	
4.0	.188	.131	.088	.161	.113	.076	.111	.079	.054	.064	.046	.032	.021	.015	.010	
5.0	.180	.121	.077	.155	.104	.067	.107	.073	.047	.062	.043	.028	.020	.014	.009	
6.0	.173	.112	.069	.149	.097	.060	.103	.068	.043	.059	.040	.025	.019	.013	.008	
7.0	.166	.106	.063	.143	.092	.055	.099	.064	.039	.057	.038	.023	.019	.012	.008	
8.0	.160	.100	.059	.137	.087	.051	.095	.061	.036	.055	.036	.022	.018	.012	.007	
9.0	.153	.095	.055	.132	.082	.048	.092	.058	.034	.053	.034	.020	.017	.011	.007	
10.0	.148	.091	.053	.127	.079	.046	.088	.055	.033	.052	.033	.020	.017	.011	.006	

C Range: 0 - 360DEG
C Interval: 30.0DEG
Test Speed: HIGH
Temperature:25.3℃
Operators:
Test Date:2025-03-12

γ Range: 0 - 180DEG
γ Interval: 1.0DEG
Test System:EVERFINE GO-2000B_V1 SYSTEM V2.00.488
Humidity:65.0%
Test Distance:6.360m [K=1.0000]
Remarks:

UGR(Unified Glare Rating) Table

Test:U:24.00V I:0.2361A P:5.666W PF:1.000 Freq:0Hz Lamp Flux:169.012x1 lm											
NAME: SF16-24V-5050-70-DMX-RGBW(2700K)-W						TYPE:		WEIGHT:			
SPEC.:						DIM.: Length=1m		SERIAL No.:			
MFR.: OLympia lighting						SUR.:		Shielding Angle:			
ceiling/cavity	0.7	0.7	0.5	0.5	0.3	0.7	0.7	0.5	0.5	0.3	
walls	0.5	0.3	0.5	0.3	0.3	0.5	0.3	0.5	0.3	0.3	
working plane	0.2	0.2	0.2	0.2	0.2	0.2	0.2	0.2	0.2	0.2	
Room dimensions		Viewed crosswise					Viewed endwise				
x = 2H y = 2H	22.8	24.3	23.1	24.6	24.9	22.6	24.1	23.0	24.4	24.7	
	3H	24.6	26.0	24.9	26.3	26.6	24.3	25.7	24.7	26.0	26.3
	4H	25.4	26.7	25.8	27.0	27.4	25.1	26.4	25.4	26.7	27.0
	6H	26.1	27.3	26.5	27.7	28.0	25.7	26.9	26.1	27.2	27.6
	8H	26.4	27.6	26.8	27.9	28.3	25.9	27.1	26.3	27.4	27.8
	12H	26.7	27.8	27.1	28.2	28.6	26.1	27.2	26.5	27.6	28.0
4H	2H	23.5	24.8	23.8	25.1	25.4	23.3	24.6	23.7	24.9	25.3
	3H	25.4	26.6	25.8	26.9	27.3	25.2	26.3	25.6	26.7	27.1
	4H	26.4	27.4	26.8	27.8	28.2	26.1	27.1	26.5	27.5	27.9
	6H	27.3	28.2	27.7	28.6	29.1	26.9	27.8	27.3	28.2	28.7
	8H	27.6	28.5	28.1	28.9	29.4	27.2	28.0	27.6	28.5	28.9
	12H	28.0	28.8	28.5	29.2	29.7	27.4	28.2	27.9	28.7	29.2
8H	4H	26.7	27.6	27.2	28.0	28.5	26.5	27.3	26.9	27.8	28.2
	6H	27.8	28.5	28.3	29.0	29.5	27.4	28.2	27.9	28.6	29.1
	8H	28.3	29.0	28.8	29.4	30.0	27.9	28.5	28.4	29.0	29.5
	12H	28.8	29.4	29.3	29.9	30.4	28.2	28.8	28.8	29.3	29.9
12H	4H	26.8	27.6	27.2	28.0	28.5	26.5	27.3	27.0	27.8	28.3
	6H	27.9	28.5	28.4	29.0	29.6	27.6	28.2	28.1	28.7	29.2
	8H	28.5	29.0	29.0	29.5	30.1	28.1	28.6	28.6	29.1	29.7
Variations with the observer position at spacings(CIE Pub.117):											
S = 1.0H		+ 0.1 / - 0.2					+ 0.1 / - 0.2				
1.5H		+ 0.2 / - 0.3					+ 0.2 / - 0.3				
2.0H		+ 0.1 / - 0.3					+ 0.1 / - 0.3				

CIE Pub.117, 169.0 lm Total Lamp Luminous Flux Correct (8log(F/F0) = -6.2)
Area: 0.0165 m2

C Range: 0 - 360DEG
C Interval: 30.0DEG
Test Speed: HIGH
Temperature:25.3℃
Operators:
Test Date:2025-03-12

γ Range: 0 - 180DEG
γ Interval: 1.0DEG
Test System:EVERFINE GO-2000B_V1 SYSTEM V2.00.488
Humidity:65.0%
Test Distance:6.360m [K=1.0000]
Remarks:

UTILIZATION FACTORS TABLE

Test:U:24.00V I:0.2361A P:5.666W PF:1.000 Freq:0Hz Lamp Flux:169.012x1 lm		
NAME: SF16-24V-5050-70-DMX-RGBW(2700K)-W	TYPE:	WEIGHT:
SPEC.:	DIM.: Length=1m	SERIAL No.:
MFR.: OLympia lighting	SUR.:	Shielding Angle:

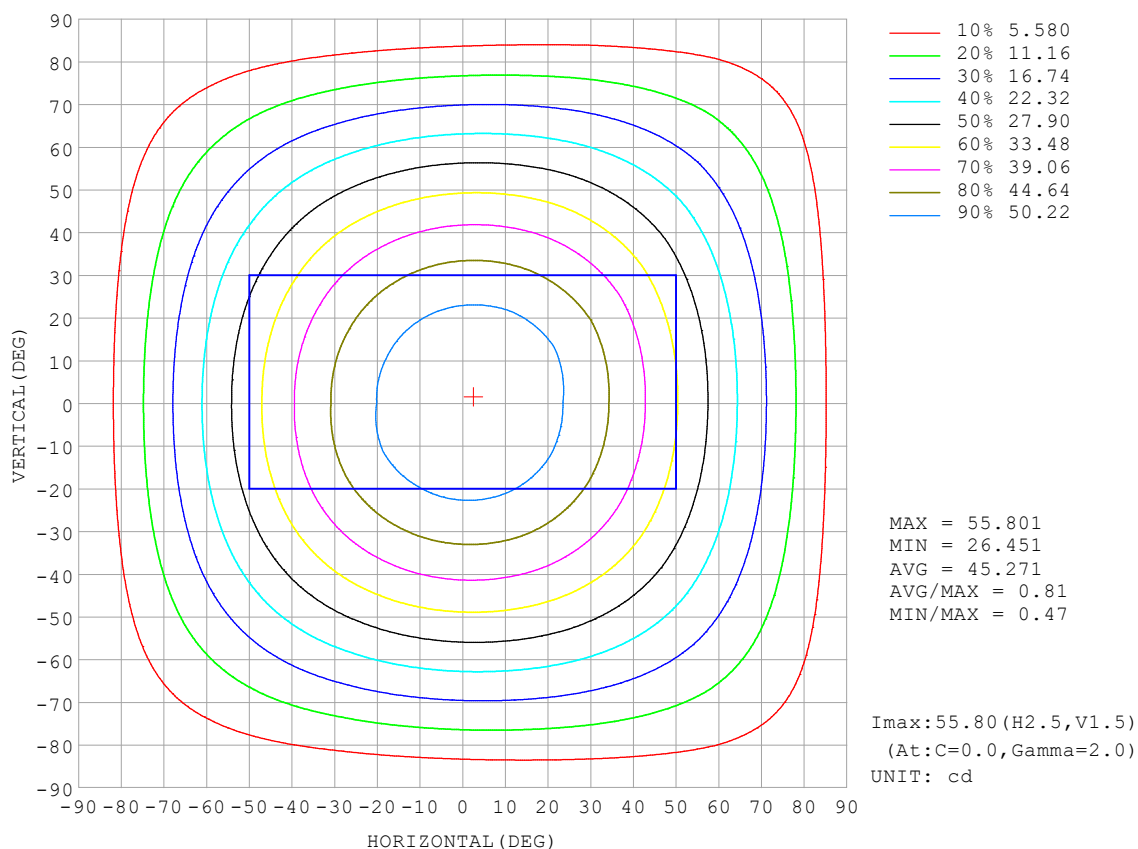
REFLECTANCE										
Ceiling	0.8	0.8	0.8	0.7	0.7	0.7	0.5	0.5	0.5	0
Walls	0.7	0.5	0.3	0.7	0.5	0.3	0.7	0.5	0.3	0
Working plane	0.2	0.2	0.2	0.2	0.2	0.2	0.2	0.2	0.2	0
ROOM INDEX	UTILIZATION FACTORS (PERCENT) $k(RI) \times RCR = 5$									
$k = 0.60$	56	44	37	55	44	37	53	43	37	30
0.80	66	54	46	64	53	46	62	52	45	38
1.00	74	62	55	72	62	54	70	63	54	46
1.25	81	70	62	79	69	62	76	67	61	53
1.50	86	75	68	84	74	68	80	72	66	58
2.00	93	84	77	91	82	76	87	80	74	65
2.50	97	89	82	94	87	81	90	84	79	69
3.00	100	93	87	98	91	86	93	88	83	73
4.00	104	98	93	102	96	92	97	92	88	78
5.00	107	102	97	104	99	95	99	95	92	81
ROOM INDEX	UF (total)									Direct
According to DIN EN 13032-2 2004			Suspended					SHRNOM = 1.25		

C Range: 0 - 360DEG
 C Interval: 30.0DEG
 Test Speed: HIGH
 Temperature: 25.3 °C
 Operators:
 Test Date: 2025-03-12

γ Range: 0 - 180DEG
 γ Interval: 1.0DEG
 Test System: EVERFINE GO-2000B_V1 SYSTEM V2.00.488
 Humidity: 65.0%
 Test Distance: 6.360m [K=1.0000]
 Remarks:

ISOCANDELA DIAGRAM

Test:U:24.00V I:0.2361A P:5.666W PF:1.000 Freq:0Hz Lamp Flux:169.012x1 lm		
NAME: SF16-24V-5050-70-DMX-RGBW(2700K)-W	TYPE:	WEIGHT:
SPEC.:	DIM.: Length=1m	SERIAL No.:
MFR.: OLympia lighting	SUR.:	Shielding Angle:

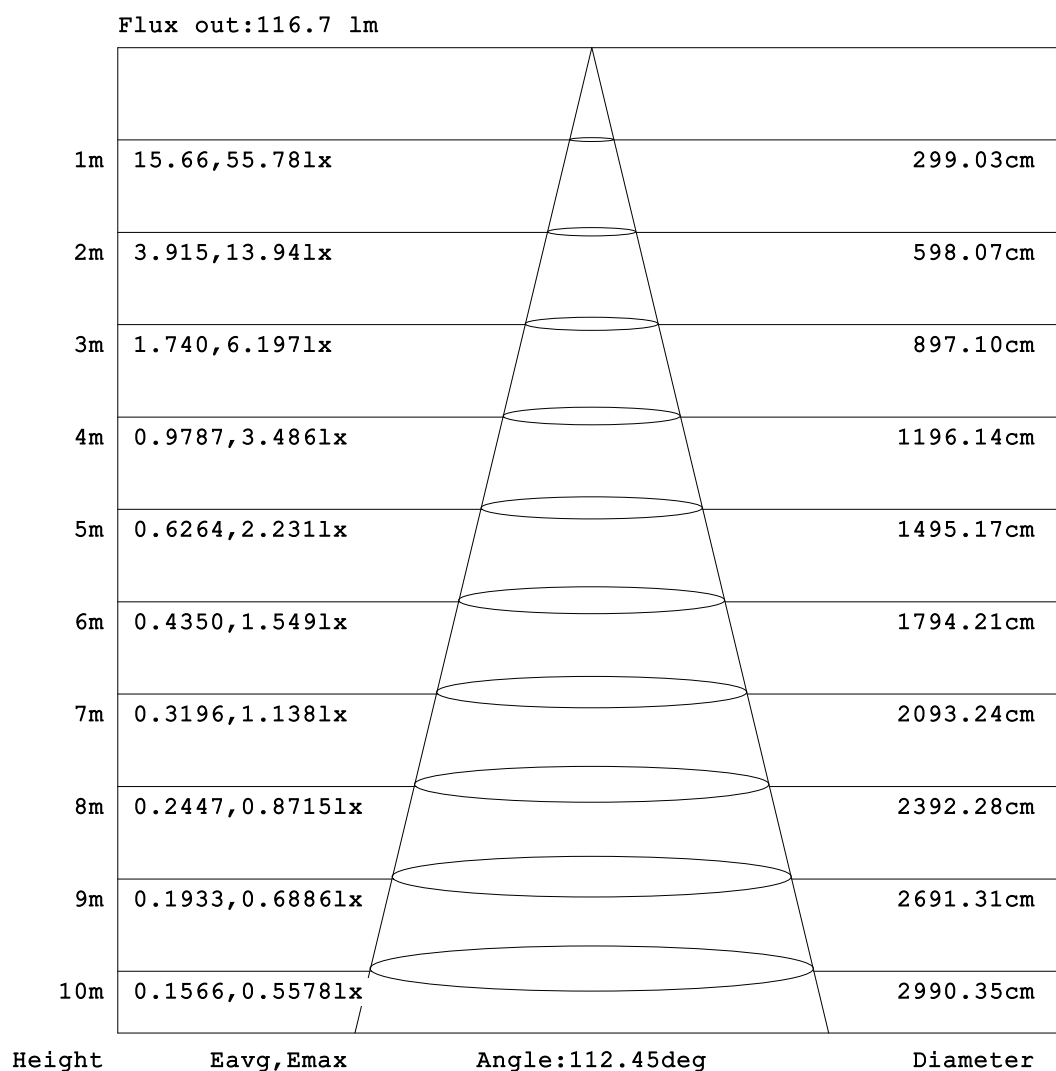


C Range: 0 - 360DEG
C Interval: 30.0DEG
Test Speed: HIGH
Temperature:25.3℃
Operators:
Test Date:2025-03-12

γ Range: 0 - 180DEG
γ Interval: 1.0DEG
Test System:EVERFINE GO-2000B_V1 SYSTEM V2.00.488
Humidity:65.0%
Test Distance:6.360m [K=1.0000]
Remarks:

AAI Figure

Test:U:24.00V I:0.2361A P:5.666W PF:1.000 Freq:0Hz Lamp Flux:169.012x1 lm		
NAME: SF16-24V-5050-70-DMX-RGBW(2700K)-W	TYPE:	WEIGHT:
SPEC.:	DIM.: Length=1m	SERIAL No.:
MFR.: OLympia lighting	SUR.:	Shielding Angle:



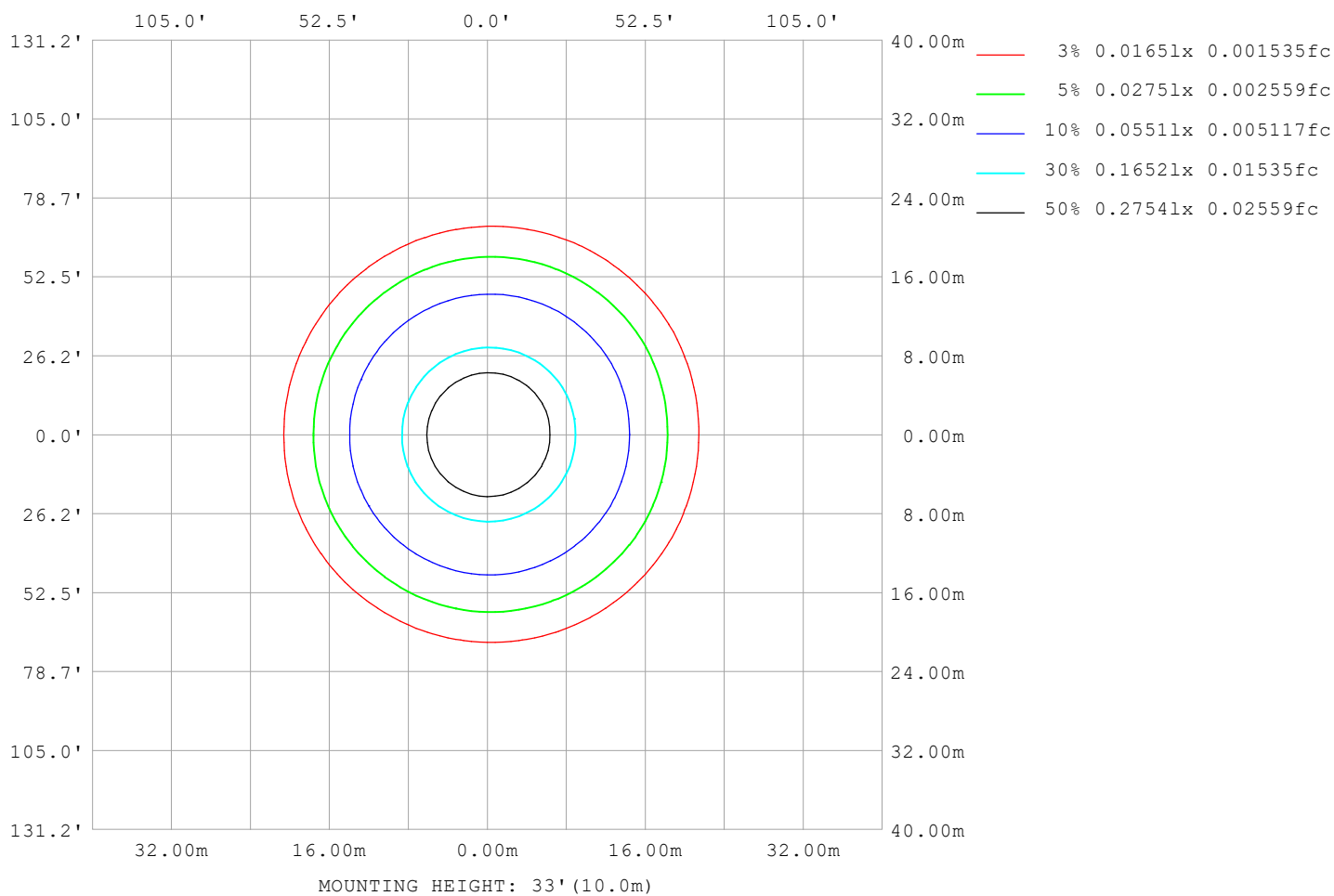
Note:The Curves indicate the illuminated area and the average illumination when the luminaire is at different distance.

C Range: 0 - 360DEG
C Interval: 30.0DEG
Test Speed: HIGH
Temperature:25.3℃
Operators:
Test Date:2025-03-12

γ Range: 0 - 180DEG
γ Interval: 1.0DEG
Test System:EVERFINE GO-2000B_V1 SYSTEM V2.00.488
Humidity:65.0%
Test Distance:6.360m [K=1.0000]
Remarks:

ISOLUX DIAGRAM

Test:U:24.00V I:0.2361A P:5.666W PF:1.000 Freq:0Hz Lamp Flux:169.012x1 lm		
NAME: SF16-24V-5050-70-DMX-RGBW(2700K)-W	TYPE:	WEIGHT:
SPEC.:	DIM.: Length=1m	SERIAL No.:
MFR.: OLympia lighting	SUR.:	Shielding Angle:



C Range: 0 - 360DEG
C Interval: 30.0DEG
Test Speed: HIGH
Temperature: 25.3°C
Operators:
Test Date: 2025-03-12

γ Range: 0 - 180DEG
γ Interval: 1.0DEG
Test System: EVERFINE GO-2000B_V1 SYSTEM V2.00.488
Humidity: 65.0%
Test Distance: 6.360m [K=1.0000]
Remarks:

LED Avg.L Report

Test:U:24.00V I:0.2361A P:5.666W PF:1.000 Freq:0Hz Lamp Flux:169.012x1 lm		
NAME: SF16-24V-5050-70-DMX-RGBW(2700K)-W	TYPE:	WEIGHT:
SPEC.:	DIM.: Length=1m	SERIAL No.:
MFR.: OLympia lighting	SUR.:	Shielding Angle:

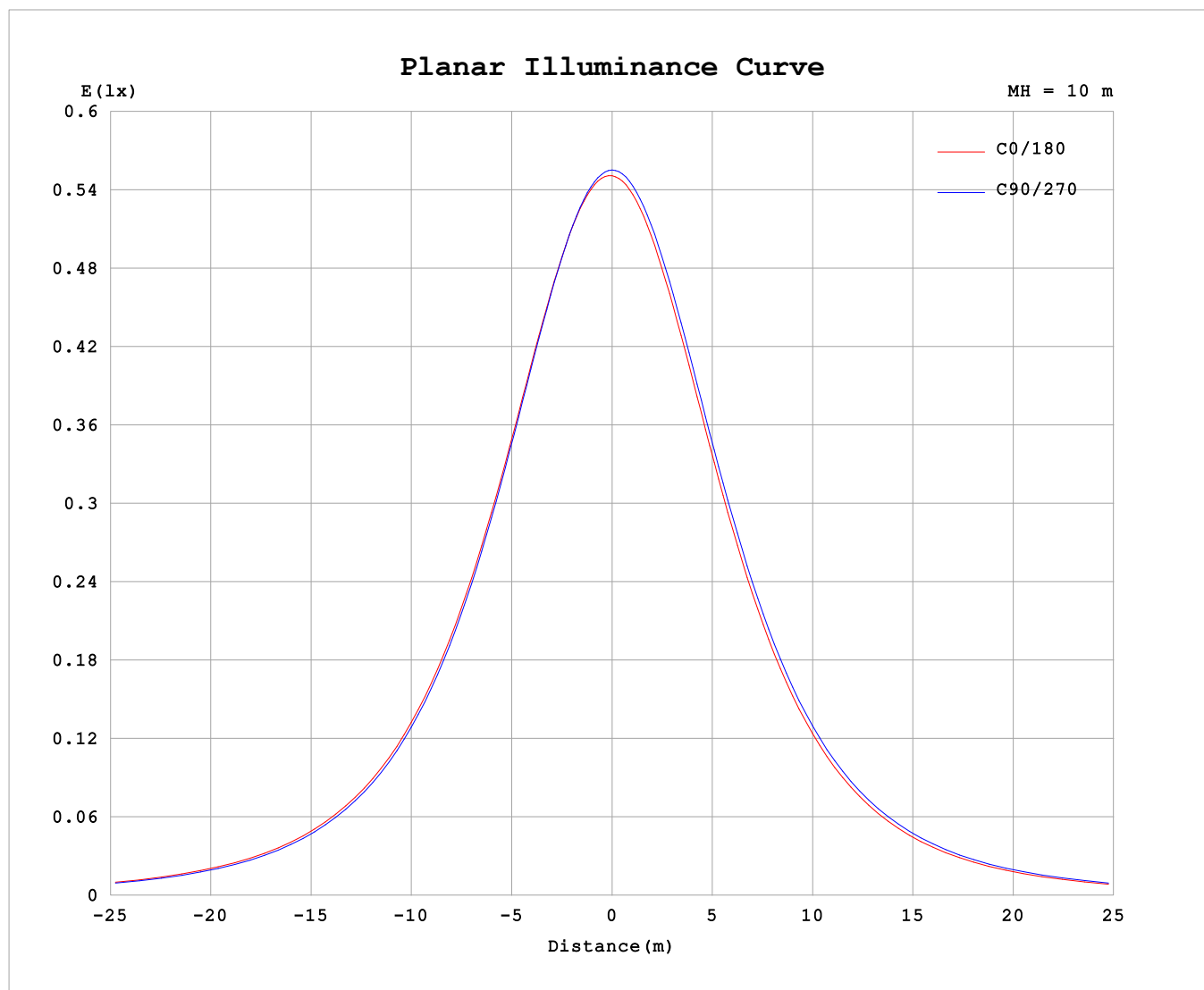
AvgL	cd/m2
L_0~180 (65) av	2951
L_0~180 (75) av	2904
L_0~180 (85) av	3245
L_90~270 (65) av	2956
L_90~270 (75) av	2909
L_90~270 (85) av	3038
L_45 (65) av	2958
L_45 (75) av	2912
L_45 (85) av	3125

Standard: GB/T 29293-2012

C Range: 0 - 360DEG
C Interval: 30.0DEG
Test Speed: HIGH
Temperature:25.3℃
Operators:
Test Date:2025-03-12

γ Range: 0 - 180DEG
γ Interval: 1.0DEG
Test System:EVERFINE GO-2000B_V1 SYSTEM V2.00.488
Humidity:65.0%
Test Distance:6.360m [K=1.0000]
Remarks:

Planar Illuminance Curve



C Range: 0 - 360DEG
C Interval: 30.0DEG
Test Speed: HIGH
Temperature: 25.3 °C
Operators:
Test Date: 2025-03-12

γ Range: 0 - 180DEG
 γ Interval: 1.0DEG
Test System: EVERFINE GO-2000B_V1 SYSTEM V2.00.488
Humidity: 65.0%
Test Distance: 6.360m [K=1.0000]
Remarks:

LUMINOUS DISTRIBUTION INTENSITY DATA

Test:U:24.00V I:0.2361A P:5.666W PF:1.000 Freq:0Hz Lamp Flux:169.012x1 lm											
NAME: SF16-24V-5050-70-DMX-RGBW(2700K)-W						TYPE:			WEIGHT:		
SPEC.:						DIM.: Length=1m			SERIAL No.:		
MFR.: OLYMPIA lighting						SUR.:			Shielding Angle:		

Table--1

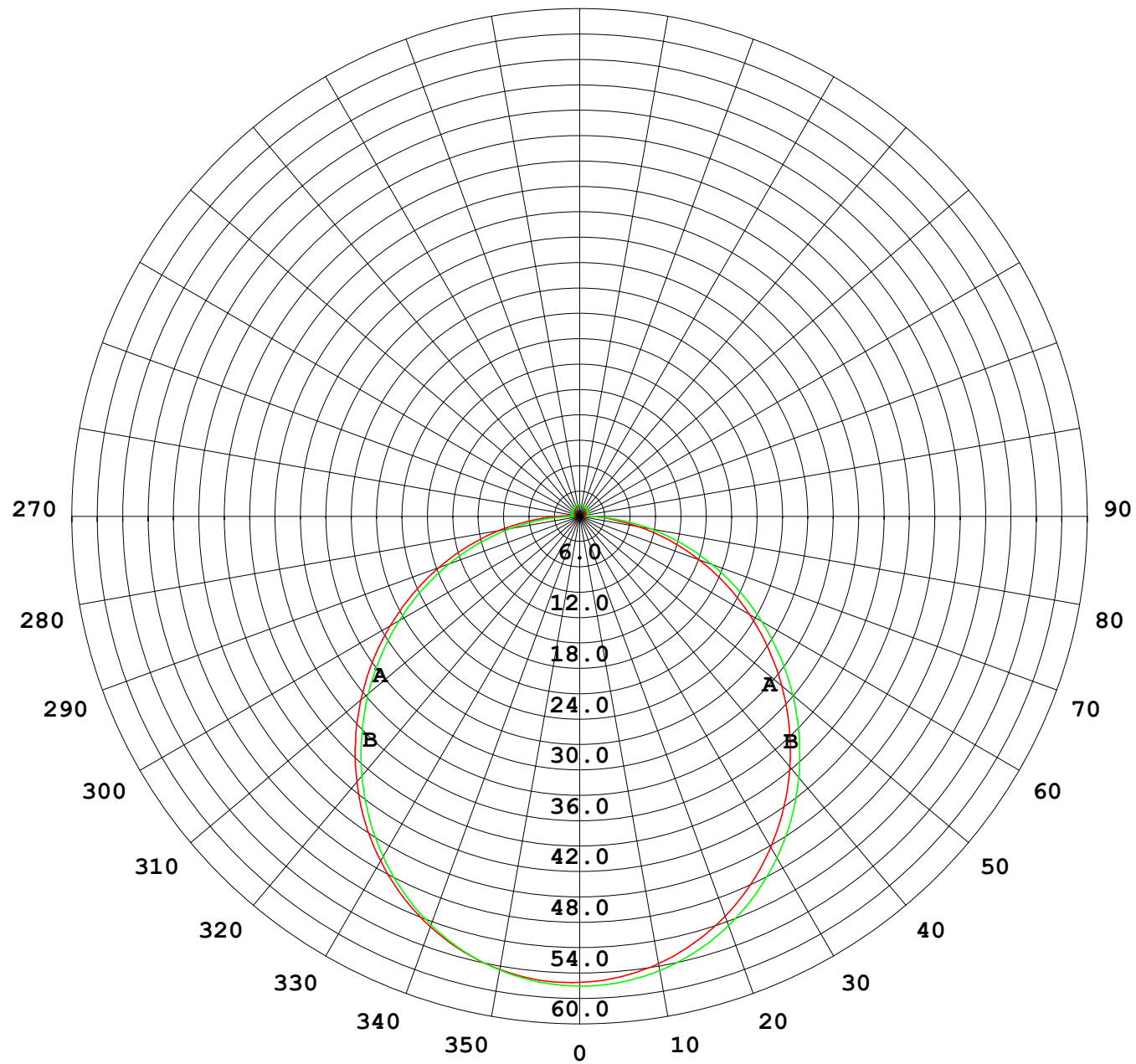
UNIT: cd

C (DEG) γ (DEG)	0	30	60	90	120	150	180	210	240	270	300	330							
0	55.4	55.4	55.4	55.4	55.4	55.4	55.4	55.4	55.4	55.4	55.4	55.4							
5	55.4	55.3	55.3	55.2	55.1	55.0	55.0	55.0	55.1	55.2	55.3	55.4							
10	54.7	54.7	54.6	54.4	54.2	54.0	54.0	54.1	54.2	54.4	54.6	54.8							
15	53.6	53.6	53.4	53.1	52.8	52.6	52.6	52.6	52.9	53.2	53.5	53.7							
20	52.0	51.9	51.7	51.3	50.9	50.7	50.6	50.7	51.0	51.4	51.8	52.0							
25	49.9	49.8	49.5	49.1	48.6	48.3	48.3	48.3	48.7	49.2	49.7	49.9							
30	47.4	47.3	46.9	46.4	45.9	45.5	45.5	45.6	46.0	46.5	47.1	47.4							
35	44.5	44.4	44.0	43.4	42.8	42.4	42.3	42.5	42.9	43.6	44.2	44.6							
40	41.2	41.1	40.7	40.0	39.4	39.0	38.9	39.1	39.6	40.2	40.9	41.3							
45	37.7	37.6	37.1	36.4	35.7	35.3	35.2	35.4	35.9	36.6	37.4	37.8							
50	34.0	33.9	33.3	32.6	31.9	31.4	31.4	31.6	32.1	32.8	33.6	34.1							
55	30.1	29.9	29.4	28.6	27.9	27.4	27.4	27.6	28.1	28.9	29.7	30.2							
60	26.0	25.9	25.3	24.6	23.8	23.4	23.3	23.5	24.1	24.8	25.7	26.1							
65	21.9	21.8	21.3	20.5	19.7	19.3	19.2	19.4	20.0	20.7	21.6	22.0							
70	17.8	17.7	17.1	16.4	15.6	15.2	15.1	15.3	15.8	16.6	17.4	17.9							
75	13.7	13.6	13.0	12.3	11.5	11.1	11.1	11.2	11.8	12.5	13.3	13.8							
80	9.69	9.59	8.96	8.26	7.51	7.09	7.05	7.20	7.74	8.49	9.30	9.79							
85	5.74	5.58	4.93	4.27	3.56	3.51	3.59	3.55	3.78	4.47	5.30	5.77							
90	2.78	2.52	1.62	0.89	1.16	1.44	1.50	1.43	1.20	0.92	1.91	2.64							
95	0.99	0.80	0.77	0.90	0.87	0.82	0.66	0.75	0.88	0.90	0.87	0.88							
100	0.71	0.69	0.78	0.92	0.89	0.86	0.69	0.76	0.92	0.95	0.90	0.73							
105	0.75	0.74	0.86	0.94	0.92	0.90	0.73	0.81	0.96	0.99	0.93	0.77							
110	0.81	0.78	0.92	0.97	0.96	0.95	0.78	0.85	1.00	1.02	0.97	0.81							
115	0.87	0.85	0.97	1.00	1.00	0.98	0.83	0.89	1.04	1.05	1.00	0.85							
120	0.92	0.94	1.01	1.04	1.03	1.03	0.88	0.93	1.07	1.08	1.02	0.89							
125	0.96	1.02	1.04	1.08	1.07	1.06	0.92	0.97	1.10	1.10	1.05	0.93							
130	1.01	1.06	1.07	1.11	1.10	1.10	0.97	1.02	1.13	1.12	1.08	0.98							
135	1.05	1.09	1.10	1.14	1.13	1.14	1.02	1.05	1.16	1.15	1.11	0.99							
140	1.10	1.12	1.14	1.18	1.16	1.17	1.07	1.09	1.19	1.17	1.13	1.02							
145	1.13	1.16	1.17	1.22	1.20	1.21	1.11	1.13	1.22	1.19	1.16	1.06							
150	1.18	1.19	1.21	1.25	1.23	1.25	1.16	1.17	1.25	1.25	1.20	1.10							
155	1.21	1.23	1.25	1.30	1.27	1.29	1.21	1.21	1.27	1.27	1.25	1.14							
160	1.26	1.26	1.29	1.34	1.30	1.32	1.26	1.25	1.30	1.29	1.28	1.19							
165	1.29	1.30	1.32	1.35	1.33	1.35	1.30	1.29	1.33	1.31	1.30	1.23							
170	1.30	1.35	1.34	1.37	1.35	1.37	1.31	1.32	1.35	1.33	1.33	1.30							
175	1.33	1.36	1.36	1.38	1.37	1.37	1.34	1.34	1.37	1.35	1.36	1.33							
180	1.34	1.36	1.38	1.38	1.37	1.37	1.34	1.36	1.38	1.38	1.38	1.37							

C Range: 0 - 360DEG
C Interval: 30.0DEG
Test Speed: HIGH
Temperature:25.3℃
Operators:
Test Date:2025-03-12

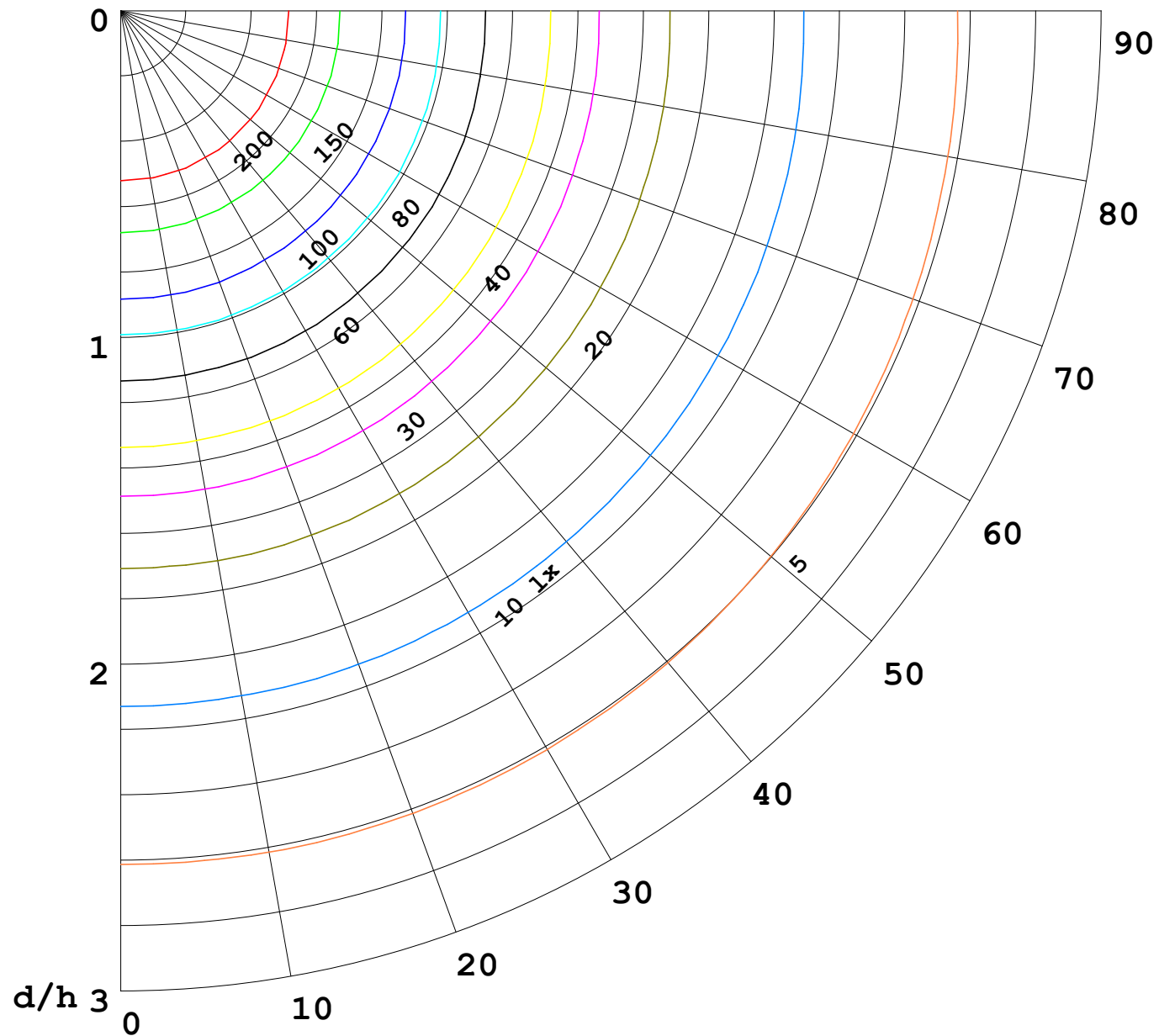
γ Range: 0 - 180DEG
γ Interval: 1.0DEG
Test System:EVERFINE GO-2000B_V1 SYSTEM V2.00.488
Humidity:65.0%
Test Distance:6.360m [K=1.0000]
Remarks:

I (cd)



1000 lm

$\kappa = 1$



F = 1000 lm
 K = 0.7
 Hcc = 0.8 m
 Hfc = 0.0 m
 Eave = 100 lx

	Pcc	Pw	Pfc
—————	70	50	30
—————	50	30	20

