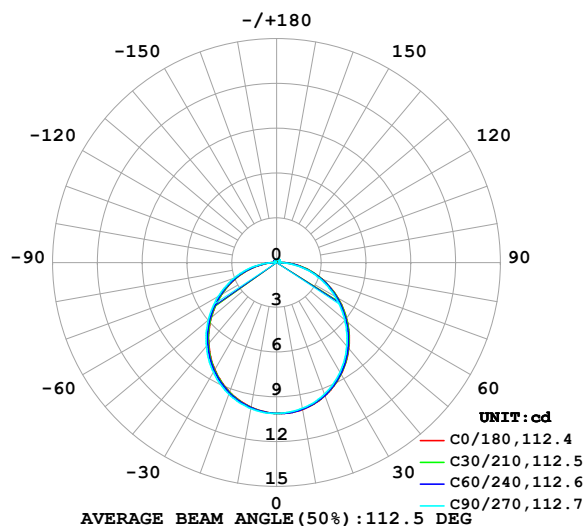


LUMINAIRE PHOTOMETRIC TEST REPORT

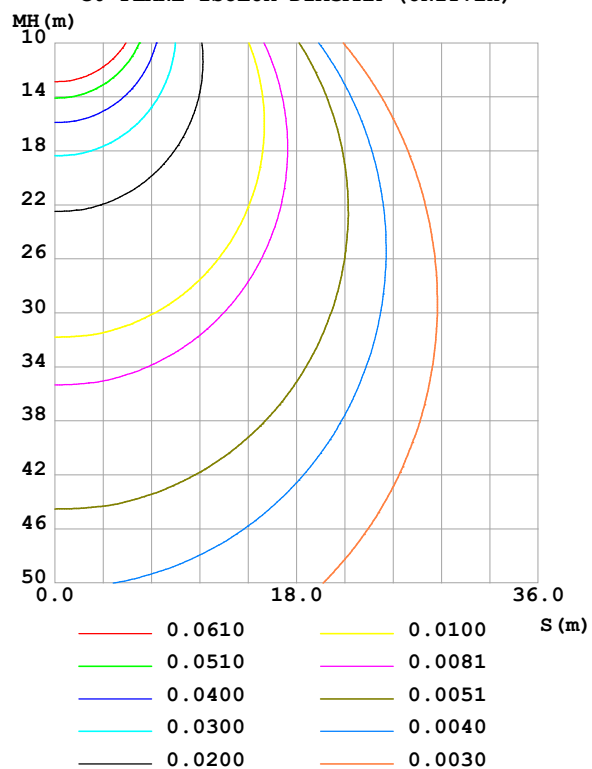
Test:U:24.00V I:0.2389A P:5.734W PF:1.000 Freq:0Hz Lamp Flux:30.8332x1 lm		
NAME: SF16-24V-5050-70-DMX-RGBW(2700K)-B	TYPE:	WEIGHT:
SPEC.:	DIM.: Length=1m	SERIAL No.:
MFR.: OLympia lighting	SUR.:	Shielding Angle:

DATA OF LAMP		PHOTOMETRIC DATA				Eff: 5.38 lm/W
MODEL	5050	Imax(cd)	10.11	S/MH(C0/180)	1.23	
NOMINAL POWER(W)		LOR(%)	100.0	S/MH(C90/270)	1.25	
RATED VOLTAGE(V)	24	TOTAL FLUX(lm)	30.833	η UP,DN(C0-180)	2.0,48.4	
NOMINAL FLUX(lm)	30.8332	CIE CLASS	DIRECT	η UP,DN(C180-360)	1.8,47.7	
LAMPS INSIDE	1	η up(%)	3.9	CIBSE SHR NOM	1.25	
TEST VOLTAGE(V)		η down(%)	96.1	CIBSE SHR MAX	1.35	

LUMINOUS INTENSITY DISTRIBUTION DIAGRAM



C0 PLANE ISOLUX DIAGRAM (UNIT:lx)



C Range: 0 - 360DEG
C Interval: 30.0DEG
Test Speed: HIGH
Temperature:25.3℃
Operators:
Test Date:2025-03-12

γ Range: 0 - 180DEG
 γ Interval: 1.0DEG
Test System:EVERFINE GO-2000B_V1 SYSTEM V2.00.488
Humidity:65.0%
Test Distance:6.360m [K=1.0000]
Remarks:

ZONAL FLUX DIAGRAM

ZONAL FLUX DIAGRAM:

γ	C0	C45	C90	C135	C180	C225	C270	C315	γ	Φ zone	Φ total	%lum, lamp
10	10.00	9.974	9.919	9.873	9.841	9.870	9.940	9.978	0- 10	0.9563	0.9563	3.1,3.1
20	9.491	9.466	9.384	9.283	9.223	9.268	9.386	9.467	10- 20	2.735	3.691	12,12
30	8.649	8.608	8.495	8.358	8.283	8.345	8.482	8.619	20- 30	4.130	7.821	25.4,25.4
40	7.530	7.472	7.325	7.161	7.085	7.153	7.324	7.486	30- 40	4.959	12.78	41.5,41.5
50	6.200	6.130	5.965	5.786	5.718	5.783	5.967	6.154	40- 50	5.137	17.92	58.1,58.1
60	4.749	4.684	4.521	4.311	4.238	4.314	4.509	4.702	50- 60	4.686	22.60	73.3,73.3
70	3.246	3.192	3.042	2.814	2.744	2.819	3.007	3.204	60- 70	3.718	26.32	85.4,85.4
80	1.767	1.703	1.549	1.347	1.276	1.349	1.532	1.720	70- 80	2.393	28.71	93.1,93.1
90	0.5173	0.3869	0.2050	0.2484	0.2619	0.2251	0.1681	0.4012	80- 90	0.9310	29.65	96.1,96.1
100	0.1356	0.1486	0.2050	0.1775	0.1299	0.1486	0.1530	0.1429	90-100	0.2012	29.85	96.8,96.8
110	0.1385	0.1631	0.2108	0.1848	0.1529	0.1558	0.1617	0.1515	100-110	0.1688	30.02	97.3,97.3
120	0.1558	0.1862	0.2195	0.1949	0.1702	0.1717	0.1704	0.1645	110-120	0.1705	30.19	97.9,97.9
130	0.1759	0.2034	0.2252	0.2050	0.1818	0.1890	0.1819	0.1775	120-130	0.1666	30.35	98.4,98.4
140	0.1875	0.2150	0.2368	0.2165	0.2019	0.1992	0.1906	0.1891	130-140	0.1537	30.51	98.9,98.9
150	0.2019	0.2295	0.2512	0.2280	0.2192	0.2121	0.2079	0.2021	140-150	0.1333	30.64	99.4,99.4
160	0.2221	0.2410	0.2541	0.2352	0.2337	0.2294	0.2195	0.2180	150-160	0.1042	30.74	99.7,99.7
170	0.2308	0.2424	0.2455	0.2410	0.2365	0.2352	0.2310	0.2338	160-170	0.0663	30.81	99.9,99.9
180	0.2394	0.2424	0.2455	0.2396	0.2365	0.2395	0.2426	0.2410	170-180	0.0228	30.83	100,100
DEG	LUMINOUS INTENSITY:cd									UNIT:lm		

Conical surface Flux(90deg): 15.369 lm

%lum = 49.8%

%lamp = 49.8%

Conical surface Flux(130deg): 24.611 lm

%lum = 79.8%

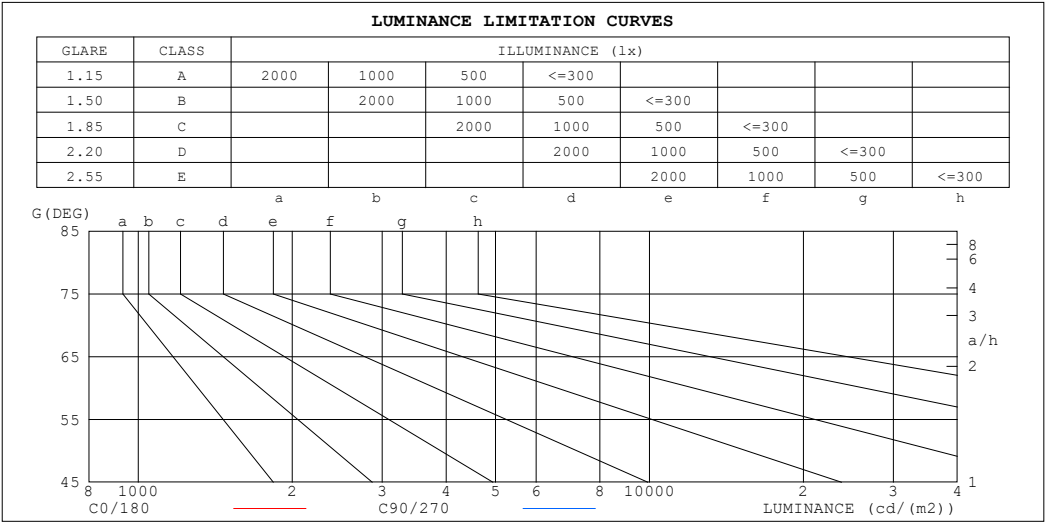
%lamp = 79.8%

C Range: 0 - 360DEG
 C Interval: 30.0DEG
 Test Speed: HIGH
 Temperature:25.3℃
 Operators:
 Test Date:2025-03-12

γ Range: 0 - 180DEG
 γ Interval: 1.0DEG
 Test System:EVERFINE GO-2000B_V1 SYSTEM V2.00.488
 Humidity:65.0%
 Test Distance:6.360m [K=1.0000]
 Remarks:

LUMINANCE LIMITATION CURVES

Test:U:24.00V I:0.2389A P:5.734W PF:1.000 Freq:0Hz Lamp Flux:30.8332x1 lm		
NAME: SF16-24V-5050-70-DMX-RGBW(2700K)-B	TYPE:	WEIGHT:
SPEC.:	DIM.: Length=1m	SERIAL No.:
MFR.: OLympia lighting	SUR.:	Shielding Angle:



LUMINANCE cd/(m2)		
G (DEG)	C0/180	C90/270
85	730	581
80	617	540
75	586	541
70	576	539
65	573	542
60	576	548
55	579	554
50	585	562
45	590	571

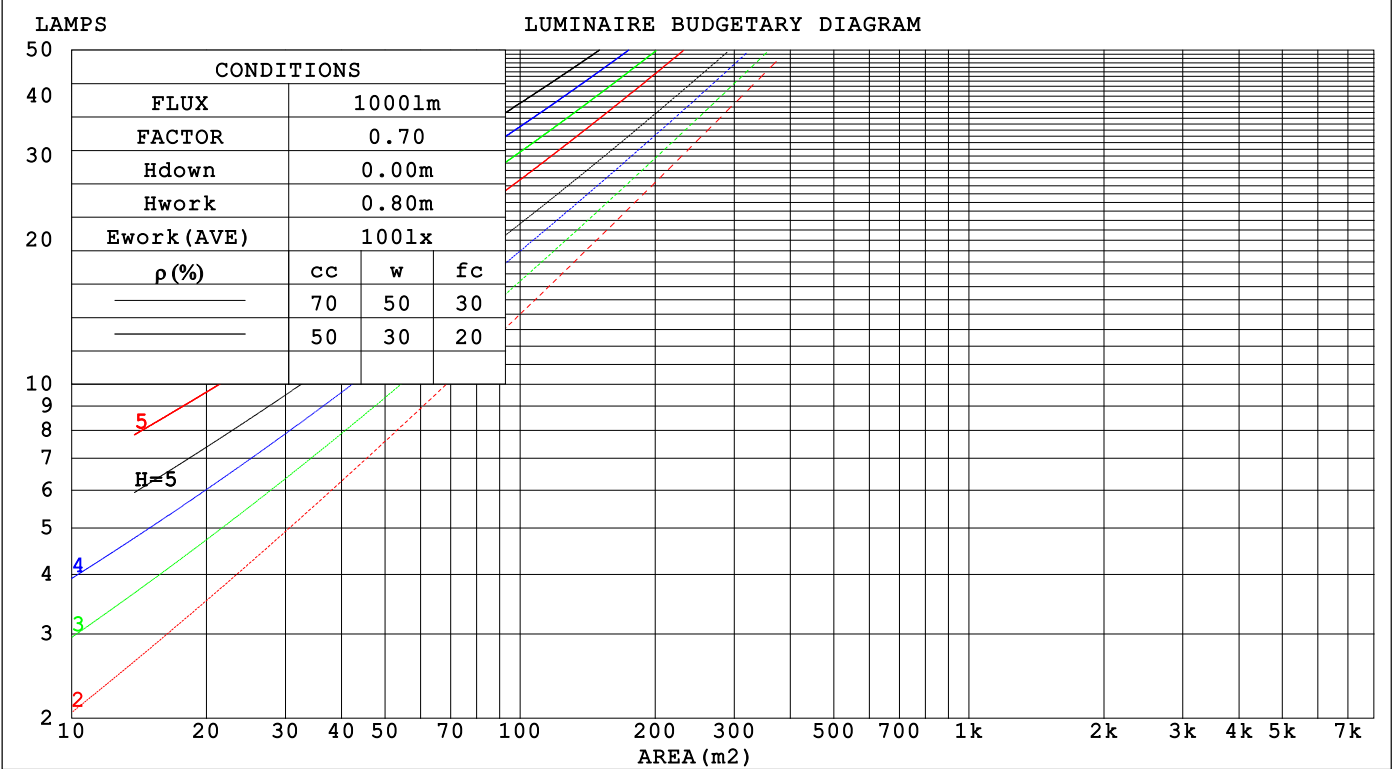
C Range: 0 - 360DEG
C Interval: 30.0DEG
Test Speed: HIGH
Temperature:25.3℃
Operators:
Test Date:2025-03-12

γ Range: 0 - 180DEG
γ Interval: 1.0DEG
Test System:EVERFINE GO-2000B_V1 SYSTEM V2.00.488
Humidity:65.0%
Test Distance:6.360m [K=1.0000]
Remarks:

CU AND LUMINAIRE BUDGETARY ESTIMATE DIAGRAM

Test:U:24.00V I:0.2389A P:5.734W PF:1.000 Freq:0Hz		
Lamp Flux:30.8332x1 lm		
NAME: SF16-24V-5050-70-DMX-RGBW(2700K)-B	TYPE:	WEIGHT:
SPEC.:	DIM.: Length=1m	SERIAL No.:
MFR.: OLYMPIA lighting	SUR.:	Shielding Angle:

pcc	80%			70%			50%			30%			10%			0
ρw	50%	30%	10%	50%	30%	10%	50%	30%	10%	50%	30%	10%	50%	30%	10%	0
ρfc	20%			20%			20%			20%			20%			0
RCR	RCR:Room Cavity Ratio			Coefficients of Utilization(CU)												
0.0	1.18	1.18	1.18	1.15	1.15	1.15	1.09	1.09	1.09	1.04	1.04	1.04	.99	.99	.99	.96
1.0	1.02	.98	.94	.99	.95	.92	.94	.91	.88	.90	.87	.85	.86	.83	.81	.79
2.0	.89	.82	.76	.86	.80	.74	.82	.77	.72	.78	.74	.70	.75	.71	.68	.65
3.0	.78	.69	.62	.76	.68	.62	.72	.66	.60	.69	.63	.59	.66	.61	.57	.55
4.0	.69	.60	.53	.67	.59	.52	.64	.57	.51	.61	.55	.50	.59	.53	.49	.46
5.0	.61	.52	.45	.60	.51	.45	.57	.50	.44	.55	.48	.43	.53	.47	.42	.40
6.0	.55	.46	.39	.54	.45	.39	.52	.44	.38	.50	.43	.38	.48	.42	.37	.35
7.0	.50	.41	.35	.49	.40	.35	.47	.39	.34	.45	.38	.33	.43	.38	.33	.31
8.0	.45	.37	.31	.45	.36	.31	.43	.36	.30	.41	.35	.30	.40	.34	.30	.28
9.0	.42	.33	.28	.41	.33	.28	.40	.32	.27	.38	.32	.27	.37	.31	.27	.25
10.0	.38	.31	.25	.38	.30	.25	.37	.30	.25	.35	.29	.24	.34	.28	.24	.22



C Range: 0 - 360DEG
C Interval: 30.0DEG
Test Speed: HIGH
Temperature:25.3℃
Operators:
Test Date:2025-03-12

γ Range: 0 - 180DEG
γ Interval: 1.0DEG
Test System:EVERFINE GO-2000B_V1 SYSTEM V2.00.488
Humidity:65.0%
Test Distance:6.360m [K=1.0000]
Remarks:

WEC AND CCEC

Test:U:24.00V I:0.2389A P:5.734W PF:1.000 Freq:0Hz Lamp Flux:30.8332x1 lm		
NAME: SF16-24V-5050-70-DMX-RGBW(2700K)-B	TYPE:	WEIGHT:
SPEC.:	DIM.: Length=1m	SERIAL No.:
MFR.: OLYMPIA lighting	SUR.:	Shielding Angle:

pcc	80%			70%			50%			30%			10%			0
pw	50%	30%	10%	50%	30%	10%	50%	30%	10%	50%	30%	10%	50%	30%	10%	0
pfc	20%			20%			20%			20%			20%			0
RCR	RCR:Room Cavity Ratio						Wall Exitance Coefficients(WEC)									
0.0																
1.0	.326	.185	.059	.318	.181	.058	.302	.173	.055	.288	.166	.053	.275	.159	.051	
2.0	.301	.165	.051	.293	.162	.050	.279	.155	.048	.267	.150	.047	.255	.144	.045	
3.0	.275	.147	.044	.269	.144	.043	.257	.139	.042	.245	.134	.041	.235	.130	.040	
4.0	.253	.131	.039	.247	.129	.038	.236	.125	.037	.226	.121	.037	.216	.117	.036	
5.0	.233	.119	.034	.227	.117	.034	.218	.113	.033	.208	.110	.033	.200	.107	.032	
6.0	.215	.108	.031	.211	.106	.031	.202	.103	.030	.193	.101	.030	.186	.098	.029	
7.0	.200	.099	.028	.196	.097	.028	.188	.095	.027	.180	.092	.027	.173	.090	.026	
8.0	.186	.091	.026	.183	.090	.025	.175	.088	.025	.169	.085	.025	.162	.083	.024	
9.0	.174	.084	.024	.171	.083	.023	.165	.081	.023	.158	.079	.023	.153	.078	.022	
10.0	.164	.079	.022	.161	.078	.022	.155	.076	.021	.149	.074	.021	.144	.072	.021	

pcc	80%			70%			50%			30%			10%			0
pw	50%	30%	10%	50%	30%	10%	50%	30%	10%	50%	30%	10%	50%	30%	10%	0
pfc	20%			20%			20%			20%			20%			0
RCR	RCR:Room Cavity Ratio						Ceiling Cavity Exitance Coefficients (CCEC)									
0.0	.220	.220	.220	.188	.188	.188	.128	.128	.128	.074	.074	.074	.024	.024	.024	
1.0	.211	.186	.163	.181	.159	.140	.123	.110	.097	.071	.063	.056	.023	.020	.018	
2.0	.203	.162	.127	.174	.139	.110	.119	.096	.076	.069	.056	.045	.022	.018	.015	
3.0	.195	.144	.103	.168	.124	.090	.115	.086	.063	.066	.050	.037	.021	.016	.012	
4.0	.188	.131	.088	.161	.113	.076	.111	.079	.054	.064	.046	.032	.021	.015	.010	
5.0	.180	.121	.077	.155	.105	.067	.107	.073	.047	.062	.043	.028	.020	.014	.009	
6.0	.173	.113	.069	.149	.097	.060	.103	.068	.043	.060	.040	.025	.019	.013	.008	
7.0	.166	.106	.063	.143	.092	.055	.099	.064	.039	.057	.038	.023	.019	.012	.008	
8.0	.160	.100	.059	.137	.087	.051	.095	.061	.037	.055	.036	.022	.018	.012	.007	
9.0	.154	.095	.056	.132	.083	.049	.092	.058	.034	.053	.034	.021	.017	.011	.007	
10.0	.148	.091	.053	.127	.079	.046	.088	.055	.033	.052	.033	.020	.017	.011	.006	

C Range: 0 - 360DEG
C Interval: 30.0DEG
Test Speed: HIGH
Temperature:25.3℃
Operators:
Test Date:2025-03-12

γ Range: 0 - 180DEG
γ Interval: 1.0DEG
Test System:EVERFINE GO-2000B_V1 SYSTEM V2.00.488
Humidity:65.0%
Test Distance:6.360m [K=1.0000]
Remarks:

UGR(Unified Glare Rating) Table

Test:U:24.00V I:0.2389A P:5.734W PF:1.000 Freq:0Hz Lamp Flux:30.8332x1 lm											
NAME: SF16-24V-5050-70-DMX-RGBW(2700K)-B					TYPE:			WEIGHT:			
SPEC.:					DIM.: Length=1m			SERIAL No.:			
MFR.: OLympia lighting					SUR.:			Shielding Angle:			
ceiling/cavity	0.7	0.7	0.5	0.5	0.3	0.7	0.7	0.5	0.5	0.3	
walls	0.5	0.3	0.5	0.3	0.3	0.5	0.3	0.5	0.3	0.3	
working plane	0.2	0.2	0.2	0.2	0.2	0.2	0.2	0.2	0.2	0.2	
Room dimensions		Viewed crosswise					Viewed endwise				
x = 2H y = 2H	2H	22.8	24.3	23.2	24.6	24.9	22.7	24.2	23.0	24.4	24.7
	3H	24.6	26.0	25.0	26.3	26.6	24.4	25.7	24.7	26.0	26.4
	4H	25.4	26.7	25.8	27.0	27.4	25.1	26.4	25.5	26.8	27.1
	6H	26.1	27.4	26.5	27.7	28.1	25.8	27.0	26.2	27.3	27.7
	8H	26.4	27.6	26.8	28.0	28.3	26.0	27.2	26.4	27.6	27.9
	12H	26.7	27.8	27.1	28.2	28.6	26.2	27.4	26.6	27.7	28.1
4H	2H	23.5	24.8	23.9	25.1	25.5	23.4	24.7	23.7	25.0	25.3
	3H	25.5	26.6	25.9	27.0	27.4	25.3	26.4	25.7	26.8	27.2
	4H	26.4	27.5	26.8	27.8	28.3	26.2	27.2	26.6	27.6	28.0
	6H	27.3	28.2	27.7	28.6	29.1	27.0	27.9	27.4	28.3	28.8
	8H	27.7	28.5	28.1	29.0	29.4	27.3	28.1	27.7	28.6	29.0
	12H	28.0	28.8	28.5	29.3	29.7	27.5	28.3	28.0	28.8	29.3
8H	4H	26.8	27.6	27.2	28.1	28.5	26.5	27.4	27.0	27.9	28.3
	6H	27.8	28.5	28.3	29.0	29.5	27.5	28.3	28.0	28.7	29.2
	8H	28.3	29.0	28.9	29.5	30.0	28.0	28.6	28.5	29.1	29.6
	12H	28.8	29.4	29.4	29.9	30.5	28.4	28.9	28.9	29.4	30.0
12H	4H	26.8	27.6	27.3	28.0	28.5	26.6	27.4	27.1	27.8	28.3
	6H	27.9	28.6	28.4	29.1	29.6	27.7	28.3	28.2	28.8	29.3
	8H	28.5	29.1	29.0	29.6	30.1	28.2	28.7	28.7	29.2	29.8
Variations with the observer position at spacings(CIE Pub.117):											
S = 1.0H		+ 0.1 / - 0.2					+ 0.1 / - 0.2				
1.5H		+ 0.2 / - 0.3					+ 0.2 / - 0.3				
2.0H		+ 0.1 / - 0.3					+ 0.1 / - 0.3				

CIE Pub.117, 30.83 lm Total Lamp Luminous Flux Correct (8log(F/F0) = -12.1)
Area: 0.0165 m2

C Range: 0 - 360DEG
C Interval: 30.0DEG
Test Speed: HIGH
Temperature:25.3℃
Operators:
Test Date:2025-03-12

γ Range: 0 - 180DEG
γ Interval: 1.0DEG
Test System:EVERFINE GO-2000B_V1 SYSTEM V2.00.488
Humidity:65.0%
Test Distance:6.360m [K=1.0000]
Remarks:

UTILIZATION FACTORS TABLE

Test:U:24.00V I:0.2389A P:5.734W PF:1.000 Freq:0Hz Lamp Flux:30.8332x1 lm		
NAME: SF16-24V-5050-70-DMX-RGBW(2700K)-B	TYPE:	WEIGHT:
SPEC.:	DIM.: Length=1m	SERIAL No.:
MFR.: OLympia lighting	SUR.:	Shielding Angle:

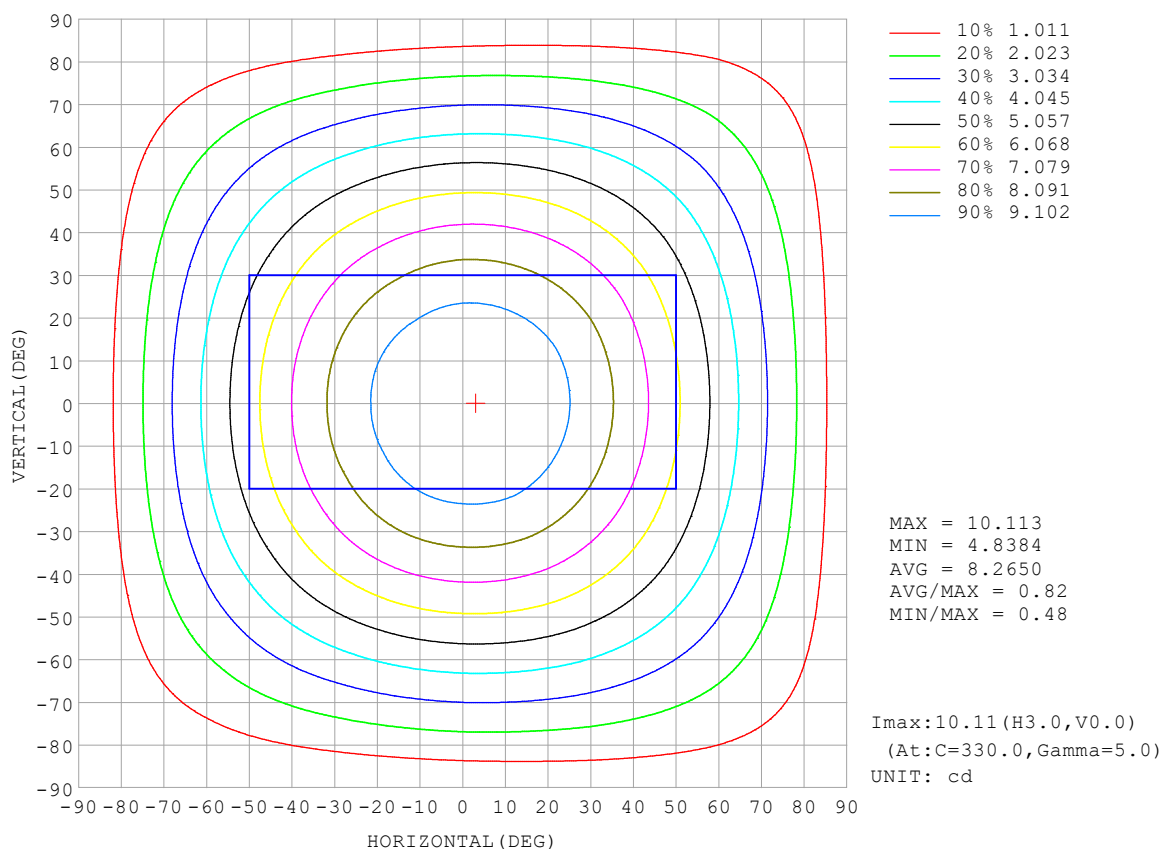
REFLECTANCE										
Ceiling	0.8	0.8	0.8	0.7	0.7	0.7	0.5	0.5	0.5	0
Walls	0.7	0.5	0.3	0.7	0.5	0.3	0.7	0.5	0.3	0
Working plane	0.2	0.2	0.2	0.2	0.2	0.2	0.2	0.2	0.2	0
ROOM INDEX	UTILIZATION FACTORS (PERCENT) $k(RI) \times RCR = 5$									
$k = 0.60$	56	44	37	55	44	37	53	43	37	30
0.80	66	54	46	64	53	46	62	52	45	38
1.00	74	62	55	72	62	54	70	63	54	46
1.25	81	70	62	79	69	62	76	67	61	53
1.50	86	75	68	84	74	68	80	72	66	58
2.00	93	84	77	91	82	76	87	80	74	65
2.50	97	89	82	94	87	81	90	84	79	69
3.00	100	93	87	98	91	86	93	88	83	73
4.00	104	98	93	102	96	92	97	92	88	78
5.00	107	102	97	104	99	95	99	95	92	81
ROOM INDEX	UF (total)									Direct
According to DIN EN 13032-2 2004			Suspended					SHRNOM = 1.25		

C Range: 0 - 360DEG
 C Interval: 30.0DEG
 Test Speed: HIGH
 Temperature: 25.3°C
 Operators:
 Test Date: 2025-03-12

γ Range: 0 - 180DEG
 γ Interval: 1.0DEG
 Test System: EVERFINE GO-2000B_V1 SYSTEM V2.00.488
 Humidity: 65.0%
 Test Distance: 6.360m [K=1.0000]
 Remarks:

ISOCANDELA DIAGRAM

Test:U:24.00V I:0.2389A P:5.734W PF:1.000 Freq:0Hz Lamp Flux:30.8332x1 lm		
NAME: SF16-24V-5050-70-DMX-RGBW(2700K)-B	TYPE:	WEIGHT:
SPEC.:	DIM.: Length=1m	SERIAL No.:
MFR.: OLympia lighting	SUR.:	Shielding Angle:

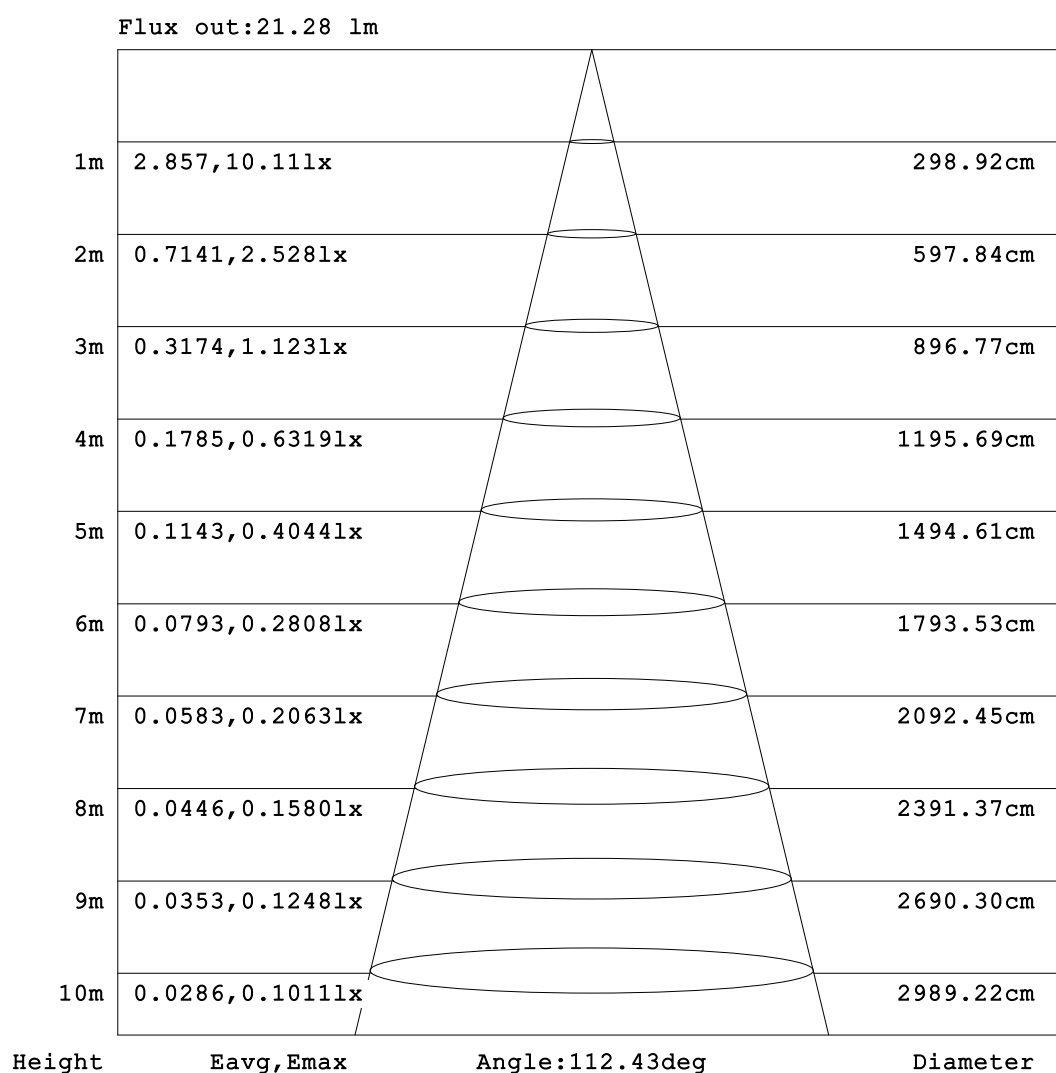


C Range: 0 - 360DEG
C Interval: 30.0DEG
Test Speed: HIGH
Temperature:25.3℃
Operators:
Test Date:2025-03-12

γ Range: 0 - 180DEG
γ Interval: 1.0DEG
Test System:EVERFINE GO-2000B_V1 SYSTEM V2.00.488
Humidity:65.0%
Test Distance:6.360m [K=1.0000]
Remarks:

AAI Figure

Test:U:24.00V I:0.2389A P:5.734W PF:1.000 Freq:0Hz Lamp Flux:30.8332x1 lm		
NAME: SF16-24V-5050-70-DMX-RGBW(2700K)-B	TYPE:	WEIGHT:
SPEC.:	DIM.: Length=1m	SERIAL No.:
MFR.: OLympia lighting	SUR.:	Shielding Angle:



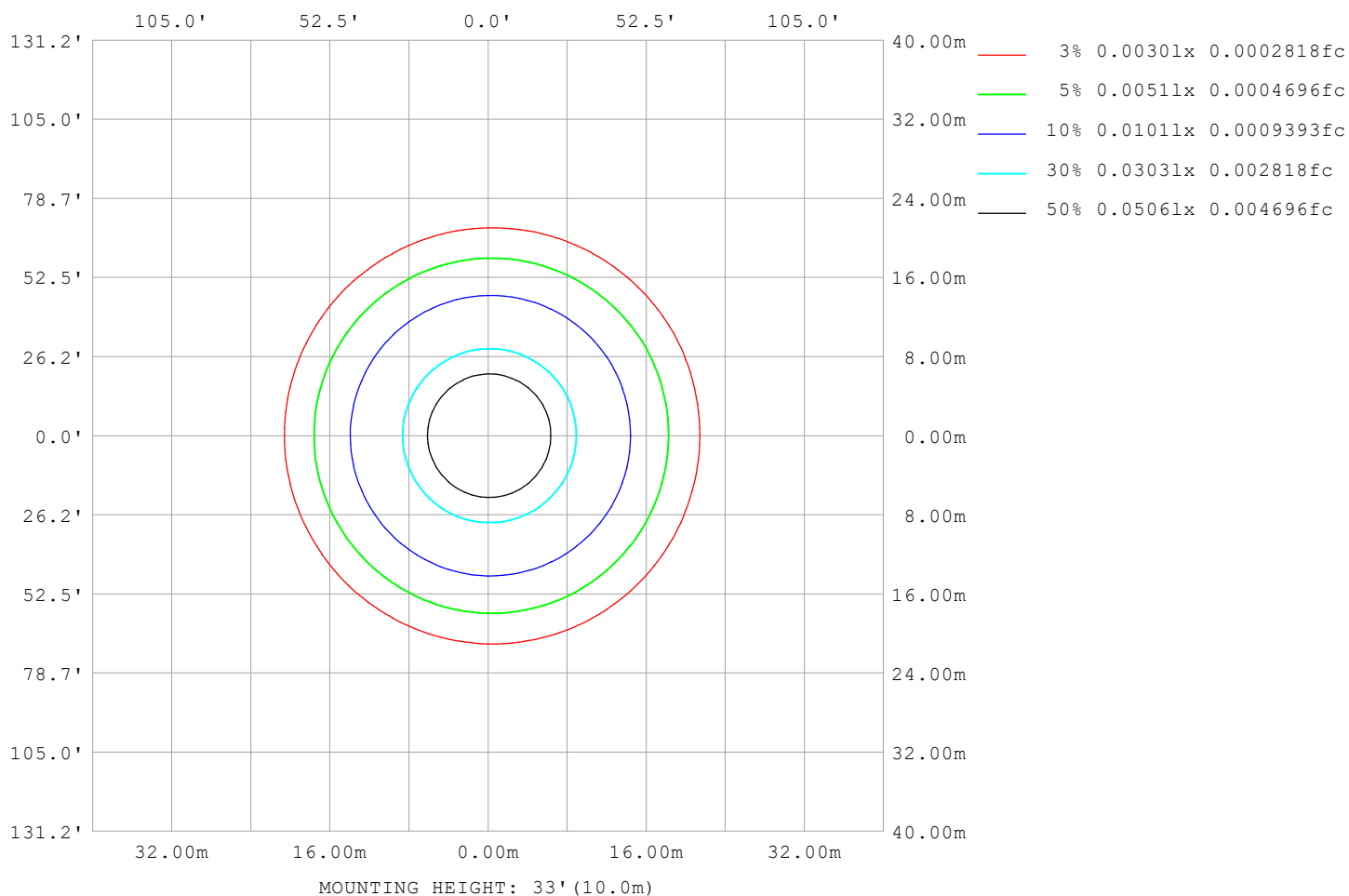
Note:The Curves indicate the illuminated area and the average illumination when the luminaire is at different distance.

C Range: 0 - 360DEG
C Interval: 30.0DEG
Test Speed: HIGH
Temperature:25.3℃
Operators:
Test Date:2025-03-12

γ Range: 0 - 180DEG
γ Interval: 1.0DEG
Test System:EVERFINE GO-2000B_V1 SYSTEM V2.00.488
Humidity:65.0%
Test Distance:6.360m [K=1.0000]
Remarks:

ISOLUX DIAGRAM

Test:U:24.00V I:0.2389A P:5.734W PF:1.000 Freq:0Hz Lamp Flux:30.8332x1 lm		
NAME: SF16-24V-5050-70-DMX-RGBW(2700K)-B	TYPE:	WEIGHT:
SPEC.:	DIM.: Length=1m	SERIAL No.:
MFR.: OLympia lighting	SUR.:	Shielding Angle:



C Range: 0 - 360DEG
C Interval: 30.0DEG
Test Speed: HIGH
Temperature: 25.3°C
Operators:
Test Date: 2025-03-12

γ Range: 0 - 180DEG
γ Interval: 1.0DEG
Test System: EVERFINE GO-2000B_V1 SYSTEM V2.00.488
Humidity: 65.0%
Test Distance: 6.360m [K=1.0000]
Remarks:

LED Avg.L Report

Test:U:24.00V I:0.2389A P:5.734W PF:1.000 Freq:0Hz Lamp Flux:30.8332x1 lm		
NAME: SF16-24V-5050-70-DMX-RGBW(2700K)-B	TYPE:	WEIGHT:
SPEC.:	DIM.: Length=1m	SERIAL No.:
MFR.: OLympia lighting	SUR.:	Shielding Angle:

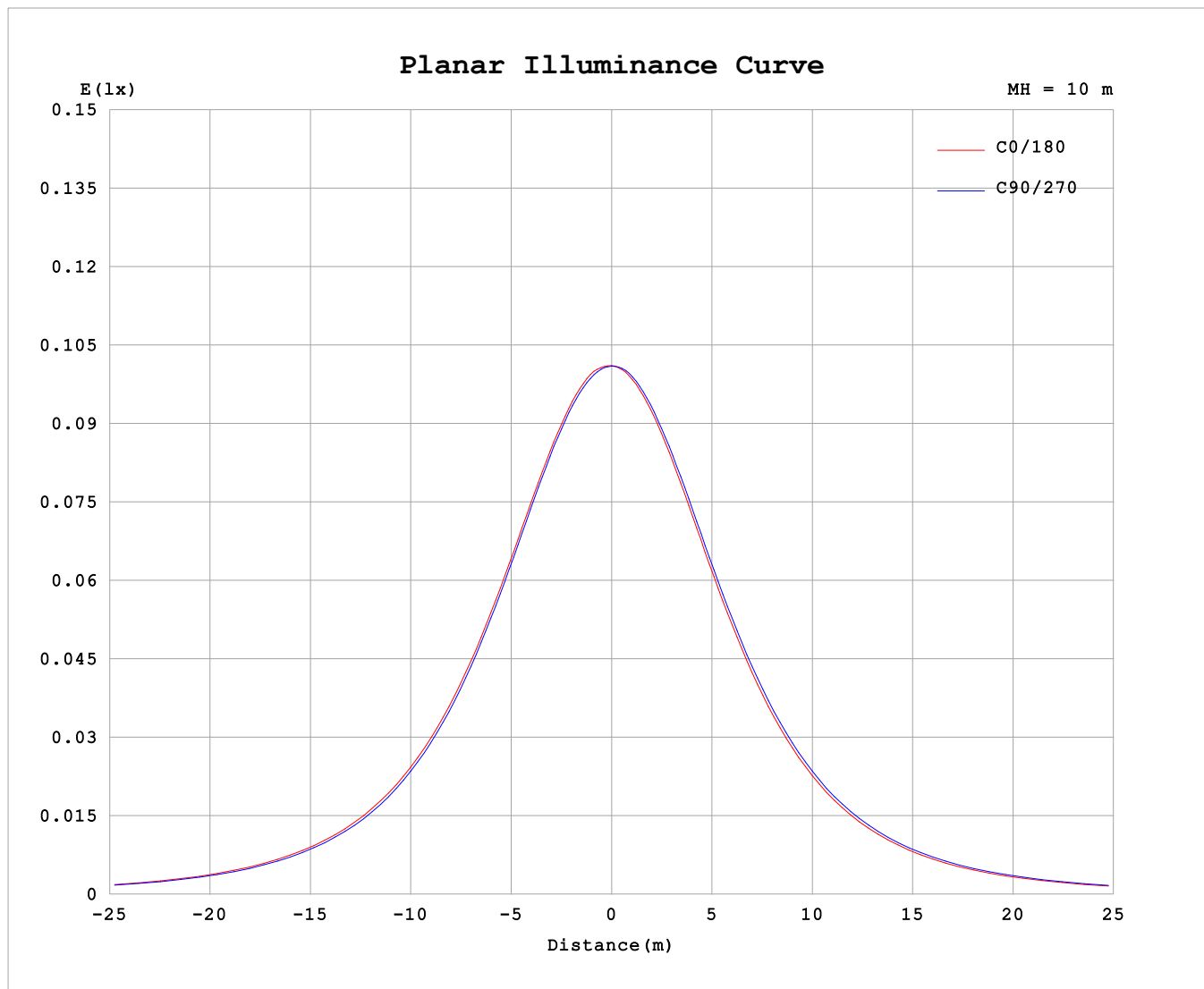
AvgL	cd/m2
L_0~180 (65) av	537
L_0~180 (75) av	528
L_0~180 (85) av	588
L_90~270 (65) av	541
L_90~270 (75) av	536
L_90~270 (85) av	569
L_45 (65) av	538
L_45 (75) av	530
L_45 (85) av	570

Standard: GB/T 29293-2012

C Range: 0 - 360DEG
C Interval: 30.0DEG
Test Speed: HIGH
Temperature:25.3℃
Operators:
Test Date:2025-03-12

γ Range: 0 - 180DEG
γ Interval: 1.0DEG
Test System:EVERFINE GO-2000B_V1 SYSTEM V2.00.488
Humidity:65.0%
Test Distance:6.360m [K=1.0000]
Remarks:

Planar Illuminance Curve



C Range: 0 - 360DEG
C Interval: 30.0DEG
Test Speed: HIGH
Temperature: 25.3 °C
Operators:
Test Date: 2025-03-12

γ Range: 0 - 180DEG
 γ Interval: 1.0DEG
Test System: EVERFINE GO-2000B_V1 SYSTEM V2.00.488
Humidity: 65.0%
Test Distance: 6.360m [K=1.0000]
Remarks:

LUMINOUS DISTRIBUTION INTENSITY DATA

Test:U:24.00V I:0.2389A P:5.734W PF:1.000 Freq:0Hz Lamp Flux:30.8332x1 lm		
NAME: SF16-24V-5050-70-DMX-RGBW(2700K)-B	TYPE:	WEIGHT:
SPEC.:	DIM.: Length=1m	SERIAL No.:
MFR.: OLYMPIA lighting	SUR.:	Shielding Angle:

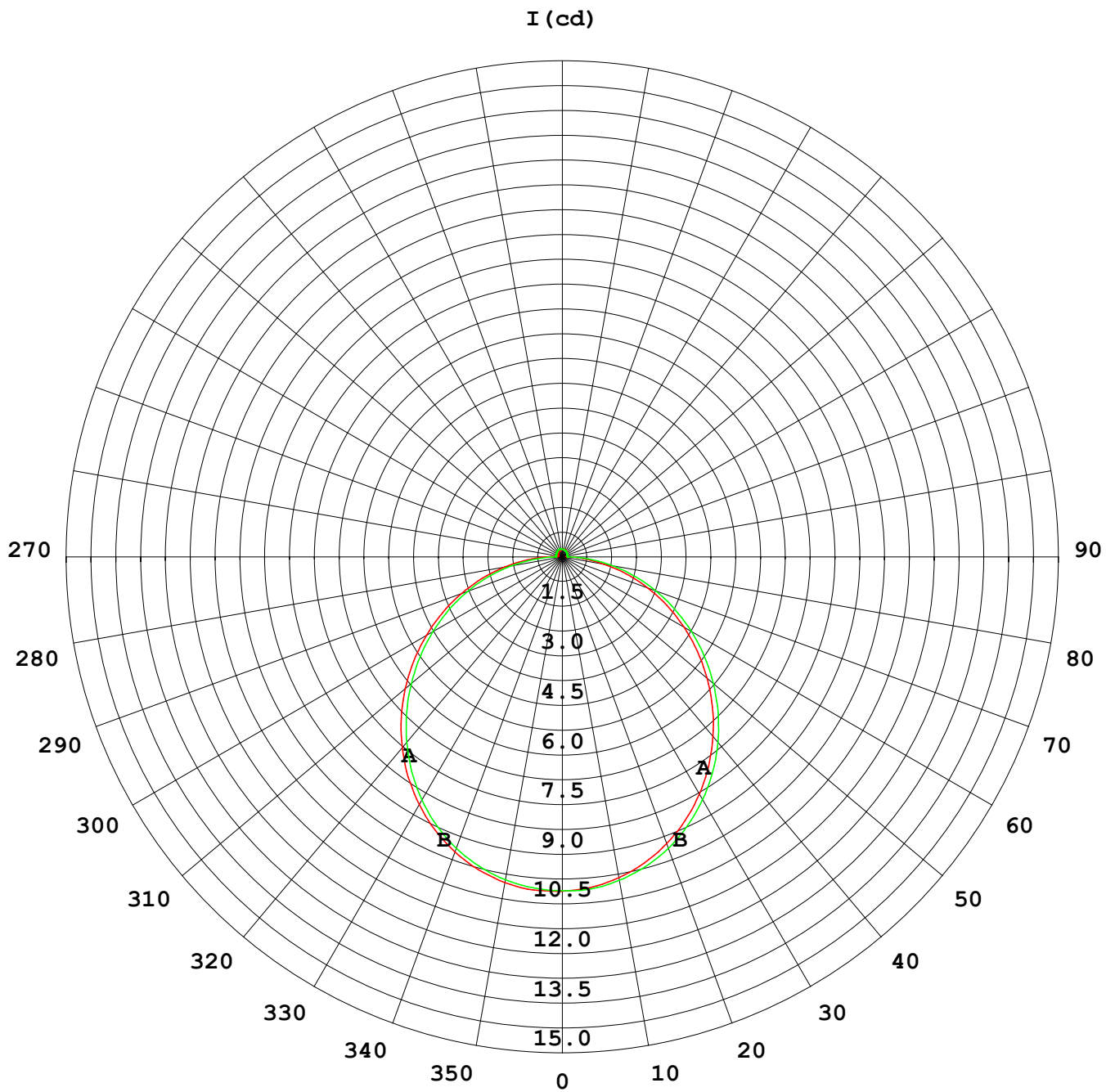
Table--1

UNIT: cd

C (DEG) γ (DEG)	0	30	60	90	120	150	180	210	240	270	300	330							
0	10.1	10.1	10.1	10.1	10.1	10.1	10.1	10.1	10.1	10.1	10.1	10.1							
5	10.1	10.1	10.1	10.1	10.1	10.0	10.0	10.0	10.0	10.1	10.1	10.1							
10	10.0	9.97	9.98	9.92	9.90	9.85	9.84	9.87	9.88	9.94	9.95	10.0							
15	9.79	9.76	9.77	9.70	9.66	9.59	9.58	9.60	9.63	9.71	9.73	9.80							
20	9.49	9.47	9.46	9.38	9.33	9.24	9.22	9.25	9.29	9.39	9.43	9.50							
25	9.11	9.09	9.08	8.98	8.90	8.81	8.78	8.82	8.87	8.97	9.04	9.12							
30	8.65	8.62	8.60	8.49	8.41	8.31	8.28	8.32	8.37	8.48	8.58	8.66							
35	8.12	8.10	8.06	7.94	7.84	7.73	7.71	7.75	7.81	7.94	8.04	8.13							
40	7.53	7.50	7.45	7.32	7.22	7.11	7.09	7.12	7.19	7.32	7.44	7.53							
45	6.88	6.85	6.80	6.66	6.54	6.44	6.42	6.45	6.52	6.67	6.79	6.89							
50	6.20	6.16	6.10	5.96	5.84	5.73	5.72	5.74	5.82	5.97	6.10	6.21							
55	5.48	5.45	5.38	5.25	5.11	5.00	4.99	5.01	5.10	5.25	5.38	5.49							
60	4.75	4.72	4.65	4.52	4.37	4.26	4.24	4.27	4.36	4.51	4.65	4.76							
65	3.99	3.97	3.91	3.78	3.61	3.51	3.49	3.53	3.61	3.76	3.90	4.01							
70	3.25	3.22	3.16	3.04	2.87	2.76	2.74	2.78	2.86	3.01	3.15	3.26							
75	2.50	2.47	2.41	2.31	2.14	2.02	2.01	2.04	2.12	2.27	2.40	2.52							
80	1.77	1.74	1.67	1.55	1.40	1.29	1.28	1.31	1.39	1.53	1.66	1.78							
85	1.05	1.01	0.94	0.84	0.69	0.63	0.64	0.65	0.67	0.80	0.94	1.05							
90	0.52	0.44	0.33	0.21	0.24	0.26	0.26	0.26	0.19	0.17	0.32	0.49							
95	0.19	0.14	0.16	0.21	0.18	0.16	0.13	0.14	0.15	0.15	0.15	0.17							
100	0.14	0.13	0.16	0.21	0.18	0.17	0.13	0.14	0.16	0.15	0.15	0.13							
105	0.14	0.14	0.17	0.21	0.18	0.18	0.14	0.14	0.17	0.15	0.16	0.13							
110	0.14	0.15	0.18	0.21	0.18	0.19	0.15	0.14	0.17	0.16	0.17	0.13							
115	0.15	0.16	0.19	0.21	0.18	0.20	0.16	0.14	0.18	0.16	0.18	0.14							
120	0.16	0.18	0.19	0.22	0.19	0.20	0.17	0.16	0.19	0.17	0.18	0.15							
125	0.17	0.20	0.19	0.23	0.19	0.20	0.17	0.16	0.19	0.18	0.19	0.16							
130	0.18	0.21	0.20	0.23	0.20	0.21	0.18	0.18	0.20	0.18	0.19	0.16							
135	0.18	0.21	0.20	0.23	0.20	0.22	0.19	0.18	0.21	0.18	0.20	0.17							
140	0.19	0.22	0.21	0.24	0.21	0.22	0.20	0.18	0.21	0.19	0.21	0.17							
145	0.20	0.23	0.22	0.25	0.22	0.23	0.21	0.20	0.22	0.20	0.21	0.18							
150	0.20	0.23	0.23	0.25	0.23	0.23	0.22	0.20	0.23	0.21	0.22	0.19							
155	0.21	0.24	0.24	0.25	0.23	0.24	0.23	0.21	0.24	0.22	0.23	0.20							
160	0.22	0.24	0.24	0.25	0.23	0.24	0.23	0.22	0.24	0.22	0.23	0.20							
165	0.22	0.24	0.25	0.25	0.23	0.24	0.24	0.22	0.24	0.23	0.24	0.21							
170	0.23	0.24	0.25	0.25	0.24	0.24	0.24	0.23	0.24	0.23	0.24	0.23							
175	0.24	0.24	0.25	0.25	0.24	0.24	0.24	0.23	0.24	0.23	0.24	0.23							
180	0.24	0.24	0.25	0.25	0.24	0.24	0.24	0.24	0.24	0.24	0.24	0.24							

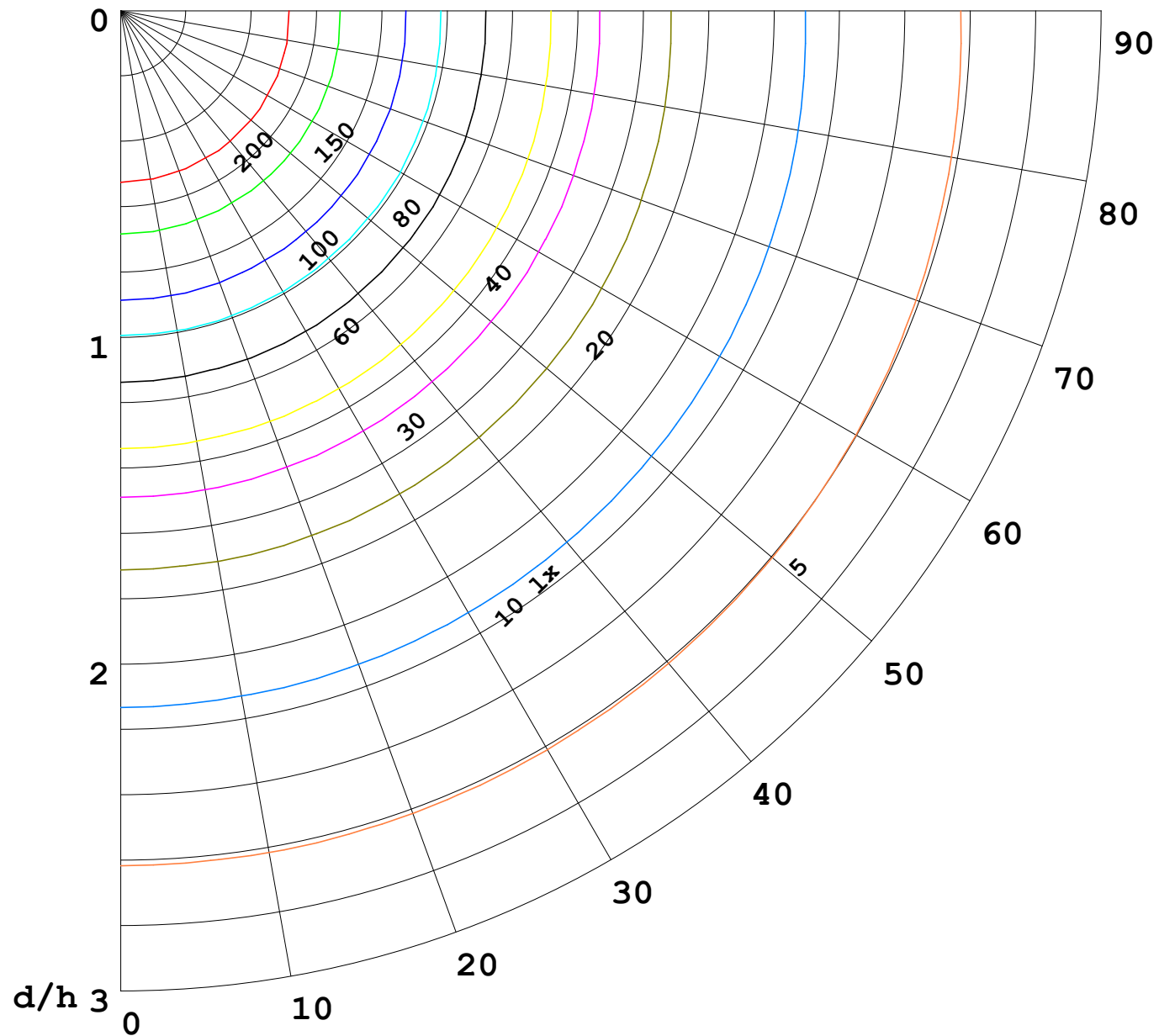
C Range: 0 - 360DEG
C Interval: 30.0DEG
Test Speed: HIGH
Temperature:25.3℃
Operators:
Test Date:2025-03-12

γ Range: 0 - 180DEG
γ Interval: 1.0DEG
Test System:EVERFINE GO-2000B_V1 SYSTEM V2.00.488
Humidity:65.0%
Test Distance:6.360m [K=1.0000]
Remarks:



1000 lm

$\kappa = 1$



F = 1000 lm
 K = 0.7
 Hcc = 0.8 m
 Hfc = 0.0 m
 Eave = 100 lx

	Pcc	Pw	Pfc
—————	70	50	30
—————	50	30	20

