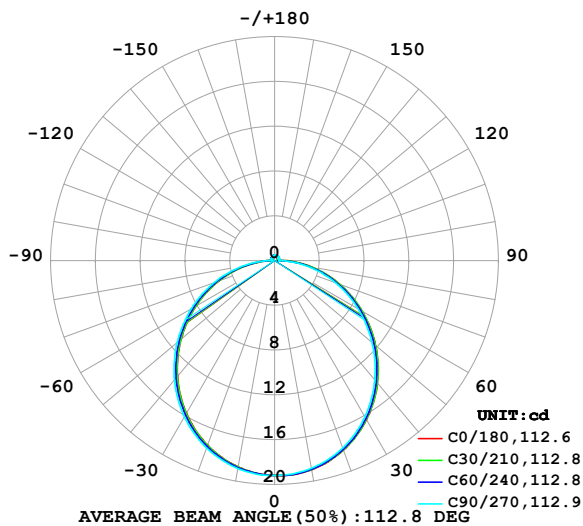


LUMINAIRE PHOTOMETRIC TEST REPORT

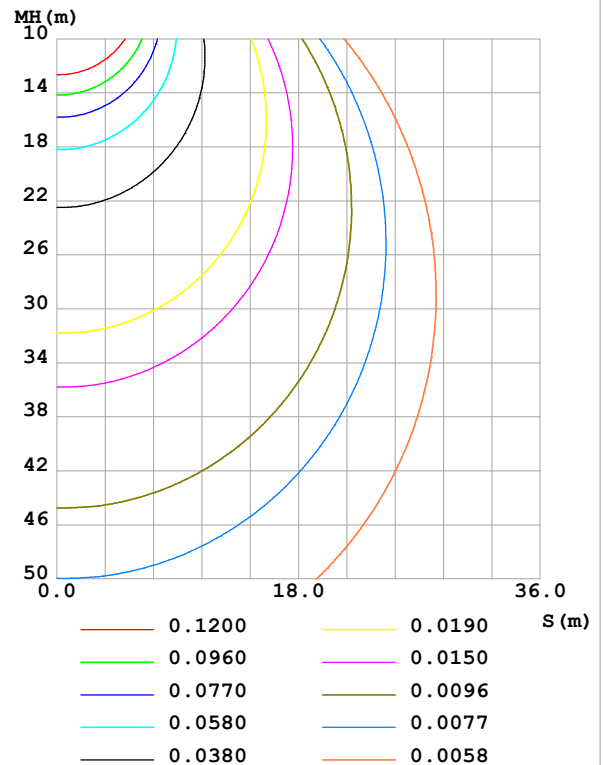
Test:U:24.00V I:0.2376A P:5.702W PF:1.000 Freq:0Hz Lamp Flux:58.7851x1 lm		
NAME: SF16-24V-5050-70-DMX-RGBW(2700K)-R	TYPE:	WEIGHT:
SPEC.:	DIM.: Length=1m	SERIAL No.:
MFR.: OLympia lighting	SUR.:	Shielding Angle:

DATA OF LAMP		PHOTOMETRIC DATA Eff: 10.31 lm/W			
MODEL	5050	I _{max} (cd)	19.22	S/MH(C0/180)	1.23
NOMINAL POWER(W)		LOR(%)	100.0	S/MH(C90/270)	1.25
RATED VOLTAGE(V)	24	TOTAL FLUX(lm)	58.785	η UP,DN(C0-180)	2.1,48.3
NOMINAL FLUX(lm)	58.7851	CIE CLASS	DIRECT	η UP,DN(C180-360)	1.9,47.7
LAMPS INSIDE	1	η up (%)	4.0	CIBSE SHR NOM	1.25
TEST VOLTAGE(V)		η down (%)	96.0	CIBSE SHR MAX	1.35

LUMINOUS INTENSITY DISTRIBUTION DIAGRAM



C0 PLANE ISOLUX DIAGRAM (UNIT:lx)



C Range: 0 - 360DEG
C Interval: 30.0DEG
Test Speed: HIGH
Temperature:25.3℃
Operators:
Test Date:2025-03-12

γ Range: 0 - 180DEG
γ Interval: 1.0DEG
Test System:EVERFINE GO-2000B_V1 SYSTEM V2.00.488
Humidity:65.0%
Test Distance:6.360m [K=1.0000]
Remarks:

ZONAL FLUX DIAGRAM

ZONAL FLUX DIAGRAM:

γ	C0	C45	C90	C135	C180	C225	C270	C315	γ	Φ zone	Φ total	%lum, lamp
10	18.98	18.94	18.84	18.75	18.72	18.75	18.86	18.95	0- 10	1.816	1.816	3.09,3.09
20	18.02	17.97	17.81	17.62	17.53	17.61	17.80	17.98	10- 20	5.194	7.010	11.9,11.9
30	16.42	16.35	16.13	15.87	15.76	15.86	16.12	16.37	20- 30	7.845	14.85	25.3,25.3
40	14.30	14.20	13.92	13.61	13.50	13.62	13.93	14.24	30- 40	9.427	24.28	41.3,41.3
50	11.78	11.68	11.36	11.02	10.89	11.03	11.36	11.73	40- 50	9.775	34.06	57.9,57.9
60	9.036	8.935	8.613	8.223	8.107	8.235	8.580	8.975	50- 60	8.933	42.99	73.1,73.1
70	6.187	6.100	5.786	5.384	5.266	5.385	5.730	6.125	60- 70	7.098	50.09	85.2,85.2
80	3.375	3.268	2.954	2.577	2.460	2.579	2.918	3.306	70- 80	4.576	54.66	93,93
90	0.9739	0.7419	0.3811	0.4910	0.5153	0.4429	0.3072	0.7766	80- 90	1.779	56.44	96,96
100	0.2625	0.2857	0.3811	0.3479	0.2567	0.2857	0.2973	0.2801	90-100	0.3859	56.83	96.7,96.7
110	0.2913	0.3261	0.3956	0.3638	0.2885	0.3088	0.3233	0.3017	100-110	0.3289	57.16	97.2,97.2
120	0.3230	0.3766	0.4158	0.3927	0.3230	0.3405	0.3465	0.3263	110-120	0.3386	57.50	97.8,97.8
130	0.3634	0.4026	0.4331	0.4100	0.3548	0.3693	0.3724	0.3552	120-130	0.3325	57.83	98.4,98.4
140	0.3894	0.4271	0.4504	0.4360	0.3923	0.3953	0.3926	0.3753	130-140	0.3056	58.13	98.9,98.9
150	0.4181	0.4516	0.4850	0.4576	0.4240	0.4242	0.4301	0.3985	140-150	0.2645	58.40	99.3,99.3
160	0.4499	0.4733	0.4937	0.4764	0.4615	0.4516	0.4533	0.4374	150-160	0.2074	58.61	99.7,99.7
170	0.4701	0.4833	0.4937	0.4822	0.4759	0.4775	0.4706	0.4706	160-170	0.1331	58.74	99.9,99.9
180	0.4788	0.4862	0.4937	0.4880	0.4788	0.4862	0.4908	0.4865	170-180	0.0459	58.79	100,100
DEG	LUMINOUS INTENSITY:cd									UNIT:lm		

Conical surface Flux(90deg): 29.203 lm

%lum = 49.7%

%lamp = 49.7%

Conical surface Flux(130deg): 46.819 lm

%lum = 79.6%

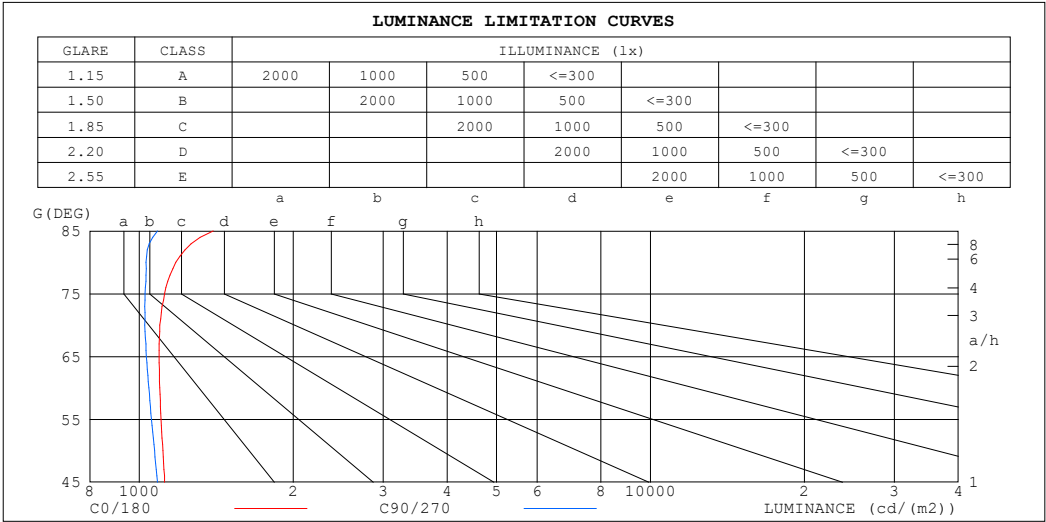
%lamp = 79.6%

C Range: 0 - 360DEG
 C Interval: 30.0DEG
 Test Speed: HIGH
 Temperature:25.3℃
 Operators:
 Test Date:2025-03-12

γ Range: 0 - 180DEG
 γ Interval: 1.0DEG
 Test System:EVERFINE GO-2000B_V1 SYSTEM V2.00.488
 Humidity:65.0%
 Test Distance:6.360m [K=1.0000]
 Remarks:

LUMINANCE LIMITATION CURVES

Test:U:24.00V I:0.2376A P:5.702W PF:1.000 Freq:0Hz Lamp Flux:58.7851x1 lm		
NAME: SF16-24V-5050-70-DMX-RGBW(2700K)-R	TYPE:	WEIGHT:
SPEC.:	DIM.: Length=1m	SERIAL No.:
MFR.: OLympia lighting	SUR.:	Shielding Angle:



LUMINANCE cd/(m2)		
G (DEG)	C0/180	C90/270
85	1395	1086
80	1179	1031
75	1121	1026
70	1097	1025
65	1093	1032
60	1096	1044
55	1103	1056
50	1111	1071
45	1121	1086

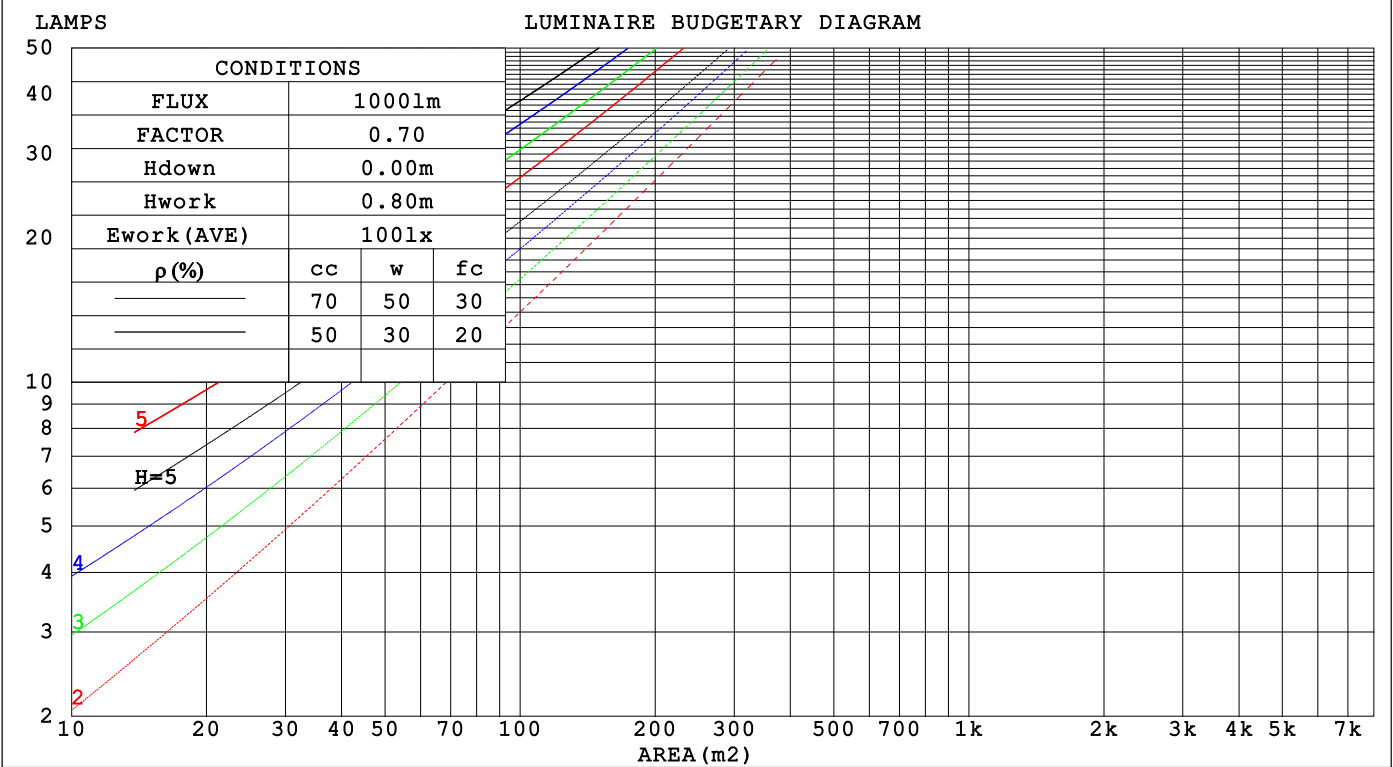
C Range: 0 - 360DEG
C Interval: 30.0DEG
Test Speed: HIGH
Temperature:25.3℃
Operators:
Test Date:2025-03-12

γ Range: 0 - 180DEG
γ Interval: 1.0DEG
Test System:EVERFINE GO-2000B_V1 SYSTEM V2.00.488
Humidity:65.0%
Test Distance:6.360m [K=1.0000]
Remarks:

CU AND LUMINAIRE BUDGETARY ESTIMATE DIAGRAM

Test:U:24.00V I:0.2376A P:5.702W PF:1.000 Freq:0Hz		
Lamp Flux:58.7851x1 lm		
NAME: SF16-24V-5050-70-DMX-RGBW(2700K)-R	TYPE:	WEIGHT:
SPEC.:	DIM.: Length=1m	SERIAL No.:
MFR.: OLYMPIA lighting	SUR.:	Shielding Angle:

pcc	80%			70%			50%			30%			10%			0
pw	50%	30%	10%	50%	30%	10%	50%	30%	10%	50%	30%	10%	50%	30%	10%	0
pfc	20%			20%			20%			20%			20%			0
RCR	RCR:Room Cavity Ratio															



C Range: 0 - 360DEG
C Interval: 30.0DEG
Test Speed: HIGH
Temperature:25.3℃
Operators:
Test Date:2025-03-12

γ Range: 0 - 180DEG
γ Interval: 1.0DEG
Test System:EVERFINE GO-2000B_V1 SYSTEM V2.00.488
Humidity:65.0%
Test Distance:6.360m [K=1.0000]
Remarks:

WEC AND CCEC

Test:U:24.00V I:0.2376A P:5.702W PF:1.000 Freq:0Hz Lamp Flux:58.7851x1 lm		
NAME: SF16-24V-5050-70-DMX-RGBW(2700K)-R	TYPE:	WEIGHT:
SPEC.:	DIM.: Length=1m	SERIAL No.:
MFR.: OLYMPIA lighting	SUR.:	Shielding Angle:

pcc	80%			70%			50%			30%			10%			0	
pw	50%	30%	10%	50%	30%	10%	50%	30%	10%	50%	30%	10%	50%	30%	10%	0	
pfc	20%			20%			20%			20%			20%			0	
RCR	RCR:Room Cavity Ratio						Wall Exitance Coefficients(WEC)										
0.0																	
1.0	.326	.185	.059	.318	.181	.058	.302	.173	.055	.288	.166	.053	.275	.159	.051		
2.0	.301	.165	.051	.293	.162	.050	.280	.155	.048	.267	.150	.047	.255	.144	.045		
3.0	.276	.147	.044	.269	.144	.043	.257	.139	.042	.245	.134	.041	.235	.130	.040		
4.0	.253	.131	.039	.247	.129	.038	.236	.125	.037	.226	.121	.037	.216	.117	.036		
5.0	.233	.119	.034	.228	.117	.034	.218	.113	.033	.208	.110	.033	.200	.107	.032		
6.0	.215	.108	.031	.211	.106	.031	.202	.103	.030	.193	.100	.030	.186	.098	.029		
7.0	.200	.099	.028	.196	.098	.028	.188	.095	.027	.180	.092	.027	.173	.090	.026		
8.0	.186	.091	.026	.183	.090	.025	.175	.088	.025	.169	.085	.025	.162	.083	.024		
9.0	.174	.084	.024	.171	.083	.023	.164	.081	.023	.158	.079	.023	.152	.077	.022		
10.0	.164	.079	.022	.161	.078	.022	.155	.076	.021	.149	.074	.021	.144	.072	.021		

pcc	80%			70%			50%			30%			10%			0
pw	50%	30%	10%	50%	30%	10%	50%	30%	10%	50%	30%	10%	50%	30%	10%	0
pfc	20%			20%			20%			20%			20%			0
RCR	RCR:Room Cavity Ratio						Ceiling Cavity Exitance Coefficients (CCEC)									
0.0	.221	.221	.221	.189	.189	.189	.129	.129	.129	.074	.074	.074	.024	.024	.024	
1.0	.212	.187	.164	.181	.160	.141	.124	.110	.097	.071	.064	.057	.023	.021	.018	
2.0	.204	.163	.128	.175	.140	.110	.120	.097	.077	.069	.056	.045	.022	.018	.015	
3.0	.197	.145	.104	.169	.125	.091	.116	.087	.064	.067	.051	.037	.021	.017	.012	
4.0	.189	.132	.089	.162	.114	.077	.111	.080	.054	.064	.047	.032	.021	.015	.011	
5.0	.181	.122	.078	.156	.105	.068	.107	.074	.048	.062	.043	.028	.020	.014	.009	
6.0	.174	.114	.070	.150	.098	.061	.103	.069	.043	.060	.041	.026	.019	.013	.008	
7.0	.167	.107	.064	.144	.093	.056	.099	.065	.040	.058	.038	.024	.019	.013	.008	
8.0	.161	.101	.060	.138	.088	.052	.096	.062	.037	.056	.036	.022	.018	.012	.007	
9.0	.155	.096	.057	.133	.083	.049	.092	.059	.035	.054	.035	.021	.017	.011	.007	
10.0	.149	.092	.054	.128	.080	.047	.089	.056	.033	.052	.033	.020	.017	.011	.007	

C Range: 0 - 360DEG
C Interval: 30.0DEG
Test Speed: HIGH
Temperature:25.3℃
Operators:
Test Date:2025-03-12

γ Range: 0 - 180DEG
γ Interval: 1.0DEG
Test System:EVERFINE GO-2000B_V1 SYSTEM V2.00.488
Humidity:65.0%
Test Distance:6.360m [K=1.0000]
Remarks:

UGR(Unified Glare Rating) Table

Test:U:24.00V I:0.2376A P:5.702W PF:1.000 Freq:0Hz Lamp Flux:58.7851x1 lm											
NAME: SF16-24V-5050-70-DMX-RGBW(2700K)-R						TYPE:		WEIGHT:			
SPEC.:						DIM.: Length=1m		SERIAL No.:			
MFR.: OLympia lighting						SUR.:		Shielding Angle:			
ceiling/cavity	0.7	0.7	0.5	0.5	0.3	0.7	0.7	0.5	0.5	0.3	
walls	0.5	0.3	0.5	0.3	0.3	0.5	0.3	0.5	0.3	0.3	
working plane	0.2	0.2	0.2	0.2	0.2	0.2	0.2	0.2	0.2	0.2	
Room dimensions		Viewed crosswise					Viewed endwise				
x = 2H y = 2H	2H	22.9	24.3	23.2	24.6	24.9	22.7	24.1	23.0	24.4	24.7
	3H	24.6	26.0	25.0	26.3	26.6	24.4	25.7	24.7	26.0	26.4
	4H	25.4	26.7	25.8	27.1	27.4	25.1	26.4	25.5	26.7	27.1
	6H	26.1	27.4	26.5	27.7	28.1	25.7	27.0	26.1	27.3	27.7
	8H	26.4	27.6	26.8	28.0	28.4	26.0	27.2	26.4	27.5	27.9
	12H	26.7	27.9	27.1	28.2	28.6	26.2	27.3	26.6	27.7	28.1
4H	2H	23.5	24.8	23.9	25.1	25.5	23.3	24.7	23.7	25.0	25.3
	3H	25.5	26.6	25.9	27.0	27.4	25.2	26.4	25.7	26.8	27.2
	4H	26.4	27.5	26.9	27.9	28.3	26.2	27.2	26.6	27.6	28.0
	6H	27.3	28.2	27.8	28.7	29.1	26.9	27.9	27.4	28.3	28.7
	8H	27.7	28.6	28.2	29.0	29.5	27.3	28.1	27.7	28.6	29.0
	12H	28.0	28.8	28.5	29.3	29.8	27.5	28.3	28.0	28.8	29.3
8H	4H	26.8	27.6	27.2	28.1	28.6	26.5	27.4	27.0	27.8	28.3
	6H	27.9	28.6	28.4	29.1	29.6	27.5	28.2	28.0	28.7	29.2
	8H	28.4	29.0	28.9	29.5	30.0	28.0	28.6	28.5	29.1	29.6
	12H	28.9	29.4	29.4	29.9	30.5	28.3	28.9	28.9	29.4	30.0
12H	4H	26.8	27.6	27.3	28.1	28.6	26.6	27.4	27.1	27.8	28.3
	6H	28.0	28.6	28.5	29.1	29.6	27.6	28.3	28.2	28.8	29.3
	8H	28.5	29.1	29.1	29.6	30.2	28.2	28.7	28.7	29.2	29.8
Variations with the observer position at spacings(CIE Pub.117):											
S = 1.0H		+ 0.1 / - 0.2					+ 0.1 / - 0.2				
1.5H		+ 0.2 / - 0.3					+ 0.2 / - 0.3				
2.0H		+ 0.1 / - 0.3					+ 0.1 / - 0.3				

CIE Pub.117, 58.79 lm Total Lamp Luminous Flux Correct (8log(F/F0) = -9.8)
Area: 0.0165 m2

C Range: 0 - 360DEG
C Interval: 30.0DEG
Test Speed: HIGH
Temperature:25.3℃
Operators:
Test Date:2025-03-12

γ Range: 0 - 180DEG
γ Interval: 1.0DEG
Test System:EVERFINE GO-2000B_V1 SYSTEM V2.00.488
Humidity:65.0%
Test Distance:6.360m [K=1.0000]
Remarks:

UTILIZATION FACTORS TABLE

Test:U:24.00V I:0.2376A P:5.702W PF:1.000 Freq:0Hz Lamp Flux:58.7851x1 lm		
NAME: SF16-24V-5050-70-DMX-RGBW(2700K)-R	TYPE:	WEIGHT:
SPEC.:	DIM.: Length=1m	SERIAL No.:
MFR.: OLympia lighting	SUR.:	Shielding Angle:

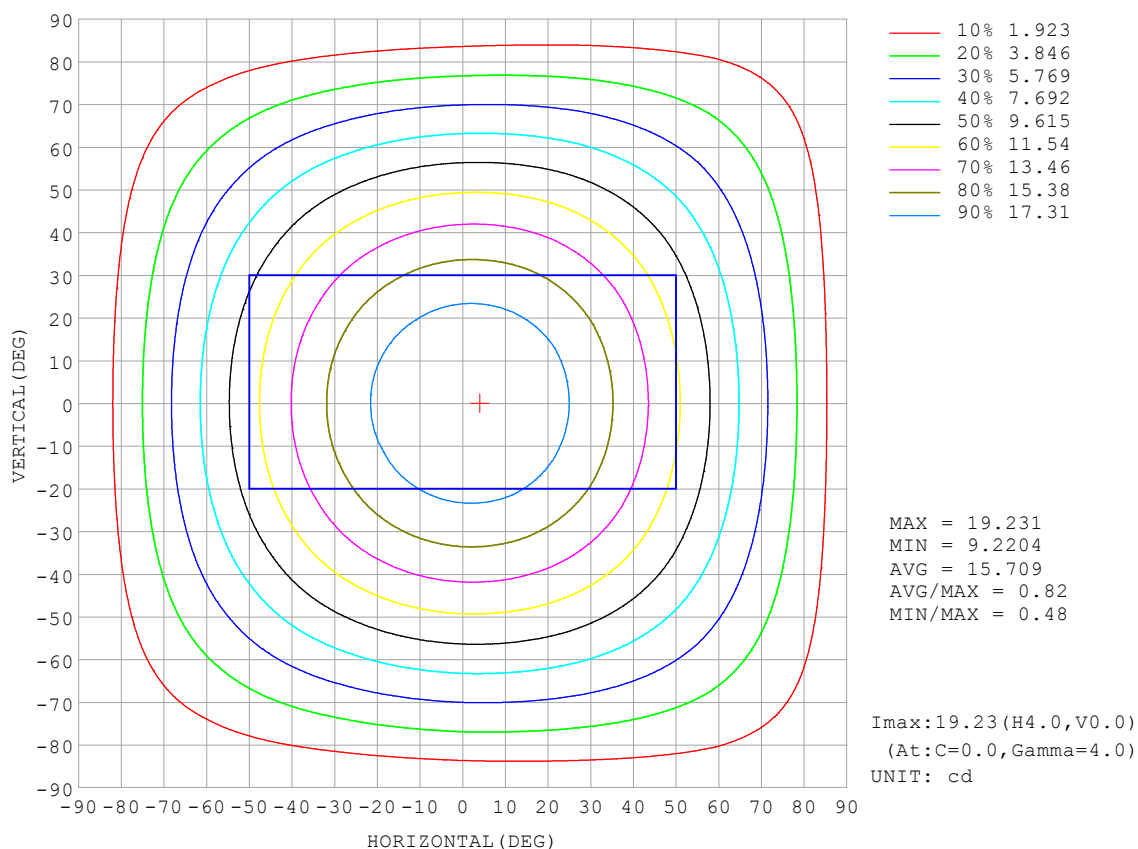
REFLECTANCE										
Ceiling	0.8	0.8	0.8	0.7	0.7	0.7	0.5	0.5	0.5	0
Walls	0.7	0.5	0.3	0.7	0.5	0.3	0.7	0.5	0.3	0
Working plane	0.2	0.2	0.2	0.2	0.2	0.2	0.2	0.2	0.2	0
ROOM INDEX	UTILIZATION FACTORS (PERCENT) $k(RI) \times RCR = 5$									
$k = 0.60$	56	44	37	55	44	37	53	43	36	30
0.80	65	54	46	64	53	46	62	52	45	38
1.00	74	62	55	72	61	54	70	63	54	46
1.25	81	70	62	79	69	62	76	67	61	53
1.50	86	75	68	84	74	67	80	72	66	58
2.00	93	84	77	90	82	76	86	79	74	65
2.50	97	88	82	94	87	81	90	84	79	69
3.00	100	93	87	98	91	86	93	87	83	73
4.00	104	98	93	102	96	91	97	92	88	78
5.00	107	102	97	104	99	95	99	95	92	81
ROOM INDEX	UF (total)									Direct
According to DIN EN 13032-2 2004			Suspended					SHRNOM = 1.25		

C Range: 0 - 360DEG
 C Interval: 30.0DEG
 Test Speed: HIGH
 Temperature: 25.3 °C
 Operators:
 Test Date: 2025-03-12

γ Range: 0 - 180DEG
 γ Interval: 1.0DEG
 Test System: EVERFINE GO-2000B_V1 SYSTEM V2.00.488
 Humidity: 65.0%
 Test Distance: 6.360m [K=1.0000]
 Remarks:

ISOCANDELA DIAGRAM

Test:U:24.00V I:0.2376A P:5.702W PF:1.000 Freq:0Hz Lamp Flux:58.7851x1 lm		
NAME: SF16-24V-5050-70-DMX-RGBW(2700K)-R	TYPE:	WEIGHT:
SPEC.:	DIM.: Length=1m	SERIAL No.:
MFR.: OLympia lighting	SUR.:	Shielding Angle:

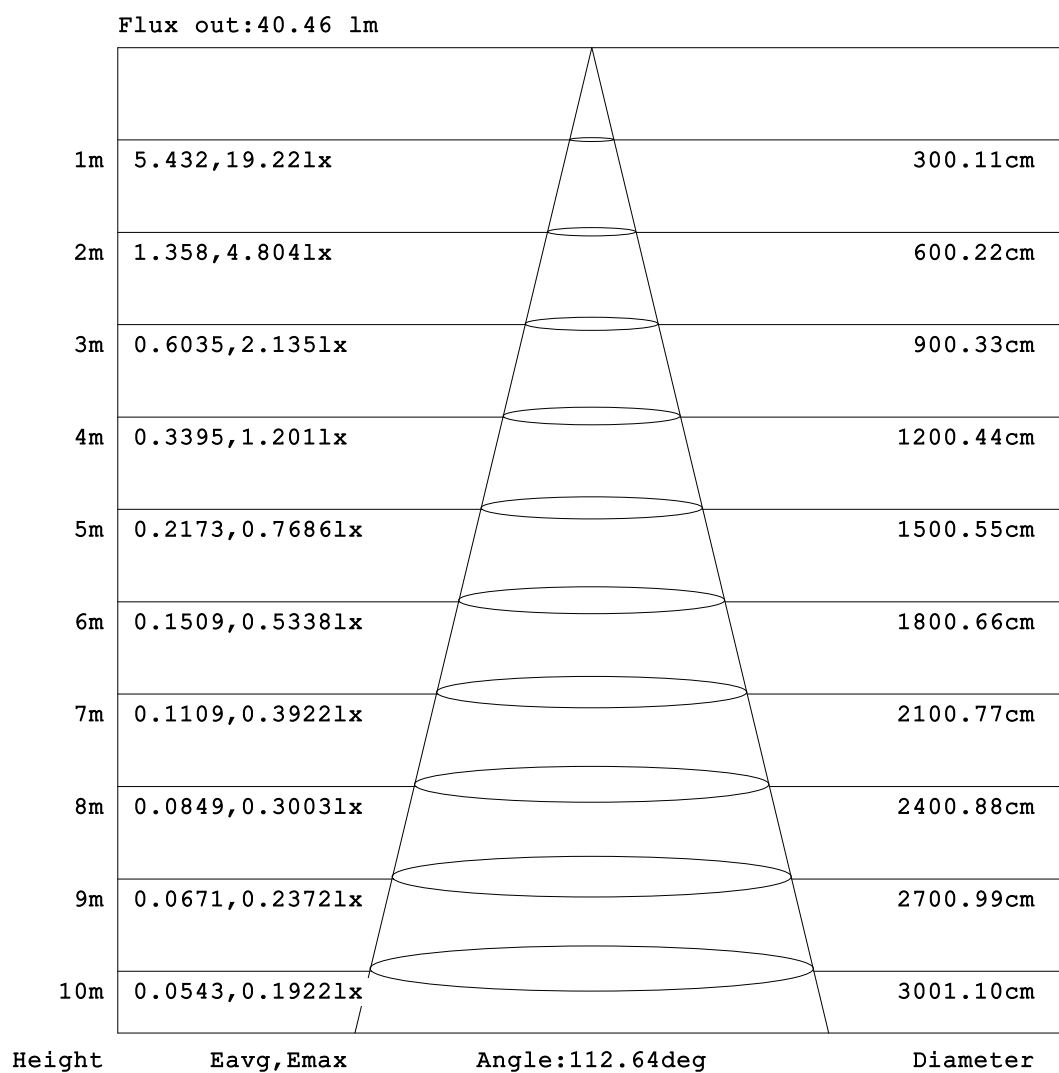


C Range: 0 - 360DEG
C Interval: 30.0DEG
Test Speed: HIGH
Temperature:25.3℃
Operators:
Test Date:2025-03-12

γ Range: 0 - 180DEG
γ Interval: 1.0DEG
Test System:EVERFINE GO-2000B_V1 SYSTEM V2.00.488
Humidity:65.0%
Test Distance:6.360m [K=1.0000]
Remarks:

AAI Figure

Test:U:24.00V I:0.2376A P:5.702W PF:1.000 Freq:0Hz Lamp Flux:58.7851x1 lm		
NAME: SF16-24V-5050-70-DMX-RGBW(2700K)-R	TYPE:	WEIGHT:
SPEC.:	DIM.: Length=1m	SERIAL No.:
MFR.: OLympia lighting	SUR.:	Shielding Angle:



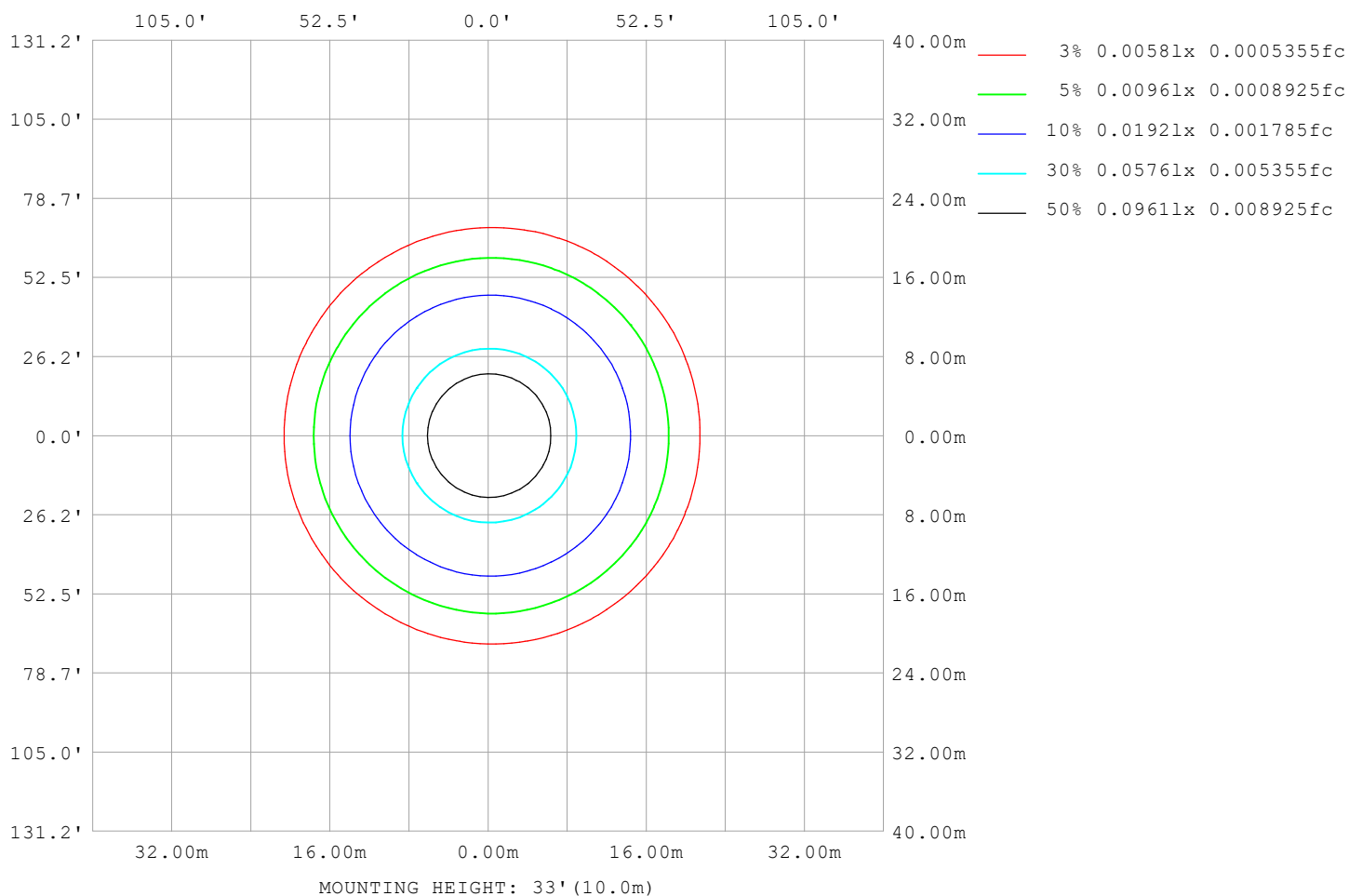
Note:The Curves indicate the illuminated area and the average illumination when the luminaire is at different distance.

C Range: 0 - 360DEG
C Interval: 30.0DEG
Test Speed: HIGH
Temperature:25.3℃
Operators:
Test Date:2025-03-12

γ Range: 0 - 180DEG
γ Interval: 1.0DEG
Test System:EVERFINE GO-2000B_V1 SYSTEM V2.00.488
Humidity:65.0%
Test Distance:6.360m [K=1.0000]
Remarks:

ISOLUX DIAGRAM

Test:U:24.00V I:0.2376A P:5.702W PF:1.000 Freq:0Hz Lamp Flux:58.785lx 1m		
NAME: SF16-24V-5050-70-DMX-RGBW(2700K)-R	TYPE:	WEIGHT:
SPEC.:	DIM.: Length=1m	SERIAL No.:
MFR.: OLympia lighting	SUR.:	Shielding Angle:



C Range: 0 - 360DEG
C Interval: 30.0DEG
Test Speed: HIGH
Temperature: 25.3°C
Operators:
Test Date: 2025-03-12

γ Range: 0 - 180DEG
γ Interval: 1.0DEG
Test System: EVERFINE GO-2000B_V1 SYSTEM V2.00.488
Humidity: 65.0%
Test Distance: 6.360m [K=1.0000]
Remarks:

LED Avg.L Report

Test:U:24.00V I:0.2376A P:5.702W PF:1.000 Freq:0Hz Lamp Flux:58.7851x1 lm		
NAME: SF16-24V-5050-70-DMX-RGBW(2700K)-R	TYPE:	WEIGHT:
SPEC.:	DIM.: Length=1m	SERIAL No.:
MFR.: OLympia lighting	SUR.:	Shielding Angle:

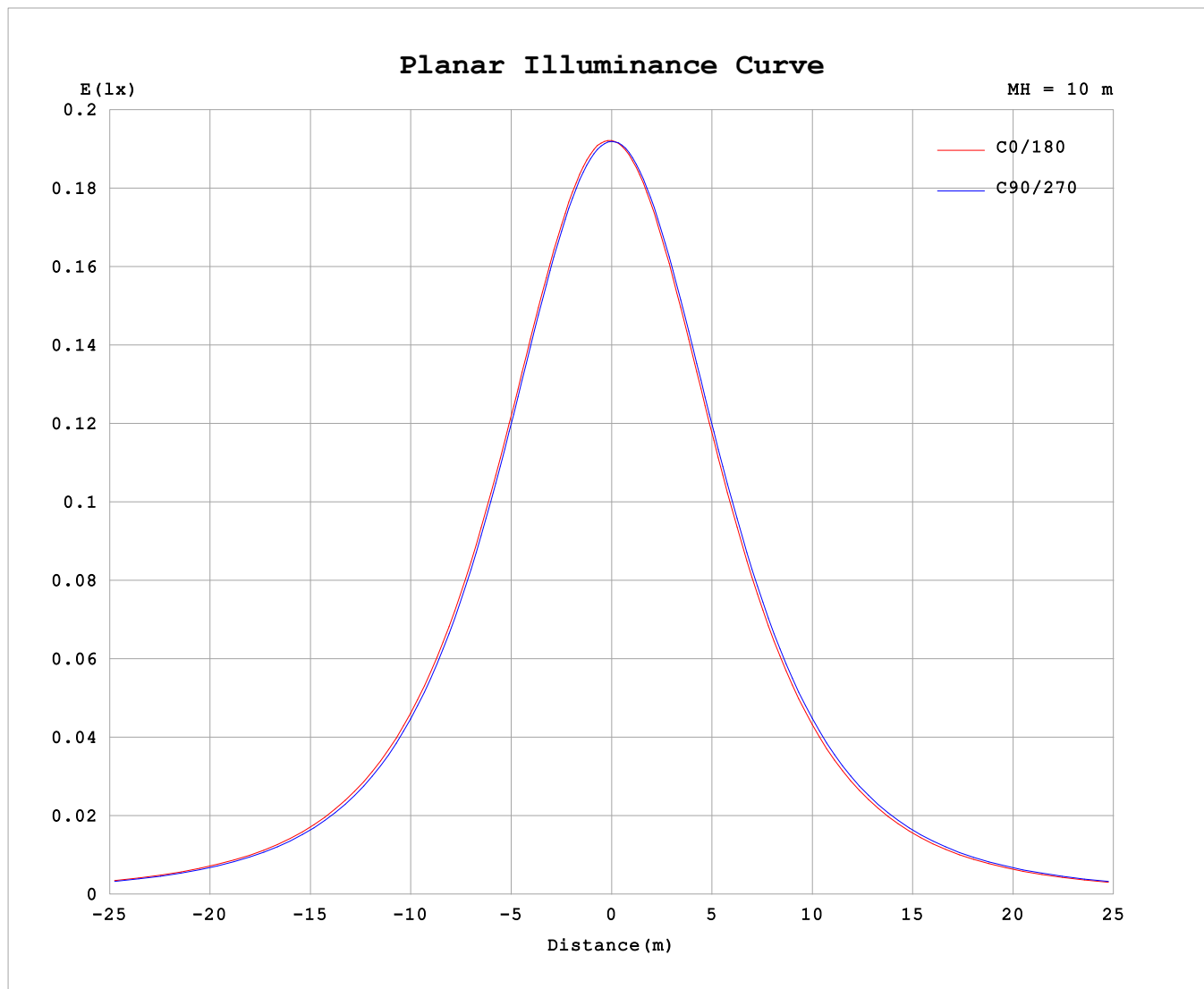
AvgL	cd/m2
L_0~180 (65) av	1026
L_0~180 (75) av	1011
L_0~180 (85) av	1126
L_90~270 (65) av	1030
L_90~270 (75) av	1018
L_90~270 (85) av	1072
L_45 (65) av	1029
L_45 (75) av	1015
L_45 (85) av	1089

Standard: GB/T 29293-2012

C Range: 0 - 360DEG
C Interval: 30.0DEG
Test Speed: HIGH
Temperature:25.3℃
Operators:
Test Date:2025-03-12

γ Range: 0 - 180DEG
γ Interval: 1.0DEG
Test System:EVERFINE GO-2000B_V1 SYSTEM V2.00.488
Humidity:65.0%
Test Distance:6.360m [K=1.0000]
Remarks:

Planar Illuminance Curve



C Range: 0 - 360DEG
C Interval: 30.0DEG
Test Speed: HIGH
Temperature: 25.3 °C
Operators:
Test Date: 2025-03-12

γ Range: 0 - 180DEG
 γ Interval: 1.0DEG
Test System: EVERFINE GO-2000B_V1 SYSTEM V2.00.488
Humidity: 65.0%
Test Distance: 6.360m [K=1.0000]
Remarks:

LUMINOUS DISTRIBUTION INTENSITY DATA

Test:U:24.00V I:0.2376A P:5.702W PF:1.000 Freq:0Hz Lamp Flux:58.7851x1 lm																	
NAME: SF16-24V-5050-70-DMX-RGBW(2700K)-R									TYPE:						WEIGHT:		
SPEC.:									DIM.: Length=1m						SERIAL No.:		
MFR.: OLYMPIA lighting									SUR.:						Shielding Angle:		

Table--1

UNIT: cd

C (DEG) γ (DEG)	0	30	60	90	120	150	180	210	240	270	300	330						
0	19.2	19.2	19.2	19.2	19.2	19.2	19.2	19.2	19.2	19.2	19.2	19.2						
5	19.2	19.2	19.2	19.1	19.1	19.0	19.1	19.1	19.1	19.1	19.1	19.1						
10	19.0	19.0	18.9	18.8	18.8	18.7	18.7	18.7	18.8	18.9	18.9	19.0						
15	18.6	18.6	18.5	18.4	18.3	18.2	18.2	18.2	18.3	18.4	18.5	18.6						
20	18.0	18.0	17.9	17.8	17.7	17.6	17.5	17.6	17.7	17.8	17.9	18.0						
25	17.3	17.3	17.2	17.0	16.9	16.7	16.7	16.7	16.9	17.0	17.2	17.3						
30	16.4	16.4	16.3	16.1	15.9	15.8	15.8	15.8	15.9	16.1	16.3	16.4						
35	15.4	15.4	15.3	15.1	14.9	14.7	14.7	14.7	14.9	15.1	15.3	15.4						
40	14.3	14.3	14.1	13.9	13.7	13.5	13.5	13.5	13.7	13.9	14.2	14.3						
45	13.1	13.1	12.9	12.7	12.4	12.3	12.2	12.3	12.4	12.7	12.9	13.1						
50	11.8	11.8	11.6	11.4	11.1	10.9	10.9	10.9	11.1	11.4	11.6	11.8						
55	10.4	10.4	10.2	9.99	9.72	9.54	9.52	9.55	9.74	9.99	10.3	10.4						
60	9.04	9.02	8.85	8.61	8.31	8.14	8.11	8.14	8.33	8.58	8.89	9.05						
65	7.62	7.60	7.44	7.20	6.89	6.72	6.69	6.72	6.91	7.16	7.47	7.64						
70	6.19	6.18	6.02	5.79	5.47	5.30	5.27	5.29	5.48	5.73	6.04	6.21						
75	4.78	4.77	4.59	4.38	4.07	3.89	3.85	3.89	4.06	4.31	4.62	4.80						
80	3.37	3.37	3.17	2.95	2.67	2.49	2.46	2.49	2.67	2.92	3.21	3.40						
85	2.00	1.96	1.76	1.56	1.28	1.23	1.24	1.22	1.28	1.52	1.82	2.00						
90	0.97	0.87	0.61	0.38	0.47	0.52	0.52	0.50	0.39	0.31	0.63	0.92						
95	0.35	0.27	0.31	0.38	0.36	0.32	0.25	0.26	0.29	0.29	0.29	0.31						
100	0.26	0.26	0.31	0.38	0.36	0.34	0.26	0.26	0.31	0.30	0.30	0.26						
105	0.27	0.27	0.33	0.39	0.36	0.35	0.28	0.27	0.32	0.31	0.31	0.26						
110	0.29	0.29	0.37	0.40	0.37	0.36	0.29	0.29	0.33	0.32	0.33	0.27						
115	0.31	0.32	0.38	0.41	0.38	0.38	0.31	0.30	0.35	0.33	0.34	0.29						
120	0.32	0.37	0.39	0.42	0.39	0.40	0.32	0.32	0.36	0.35	0.35	0.30						
125	0.35	0.40	0.40	0.42	0.40	0.41	0.34	0.33	0.38	0.36	0.36	0.32						
130	0.36	0.40	0.40	0.43	0.41	0.41	0.35	0.35	0.39	0.37	0.37	0.34						
135	0.38	0.42	0.41	0.44	0.42	0.43	0.37	0.36	0.40	0.38	0.38	0.34						
140	0.39	0.43	0.43	0.45	0.43	0.44	0.39	0.37	0.42	0.39	0.40	0.35						
145	0.40	0.44	0.44	0.47	0.44	0.45	0.41	0.39	0.43	0.40	0.41	0.37						
150	0.42	0.45	0.45	0.49	0.45	0.46	0.42	0.41	0.44	0.43	0.42	0.38						
155	0.43	0.46	0.47	0.49	0.46	0.47	0.44	0.42	0.46	0.44	0.44	0.39						
160	0.45	0.47	0.48	0.49	0.47	0.48	0.46	0.44	0.47	0.45	0.46	0.41						
165	0.46	0.48	0.48	0.49	0.47	0.49	0.47	0.45	0.48	0.46	0.47	0.43						
170	0.47	0.48	0.48	0.49	0.48	0.49	0.48	0.46	0.49	0.47	0.48	0.46						
175	0.48	0.48	0.48	0.49	0.49	0.49	0.48	0.48	0.49	0.48	0.49	0.47						
180	0.48	0.48	0.49	0.49	0.49	0.49	0.48	0.48	0.49	0.49	0.49	0.48						

C Range: 0 - 360DEG

C Interval: 30.0DEG

Test Speed: HIGH

Temperature:25.3℃

Operators:

Test Date:2025-03-12

γ Range: 0 - 180DEG

γ Interval: 1.0DEG

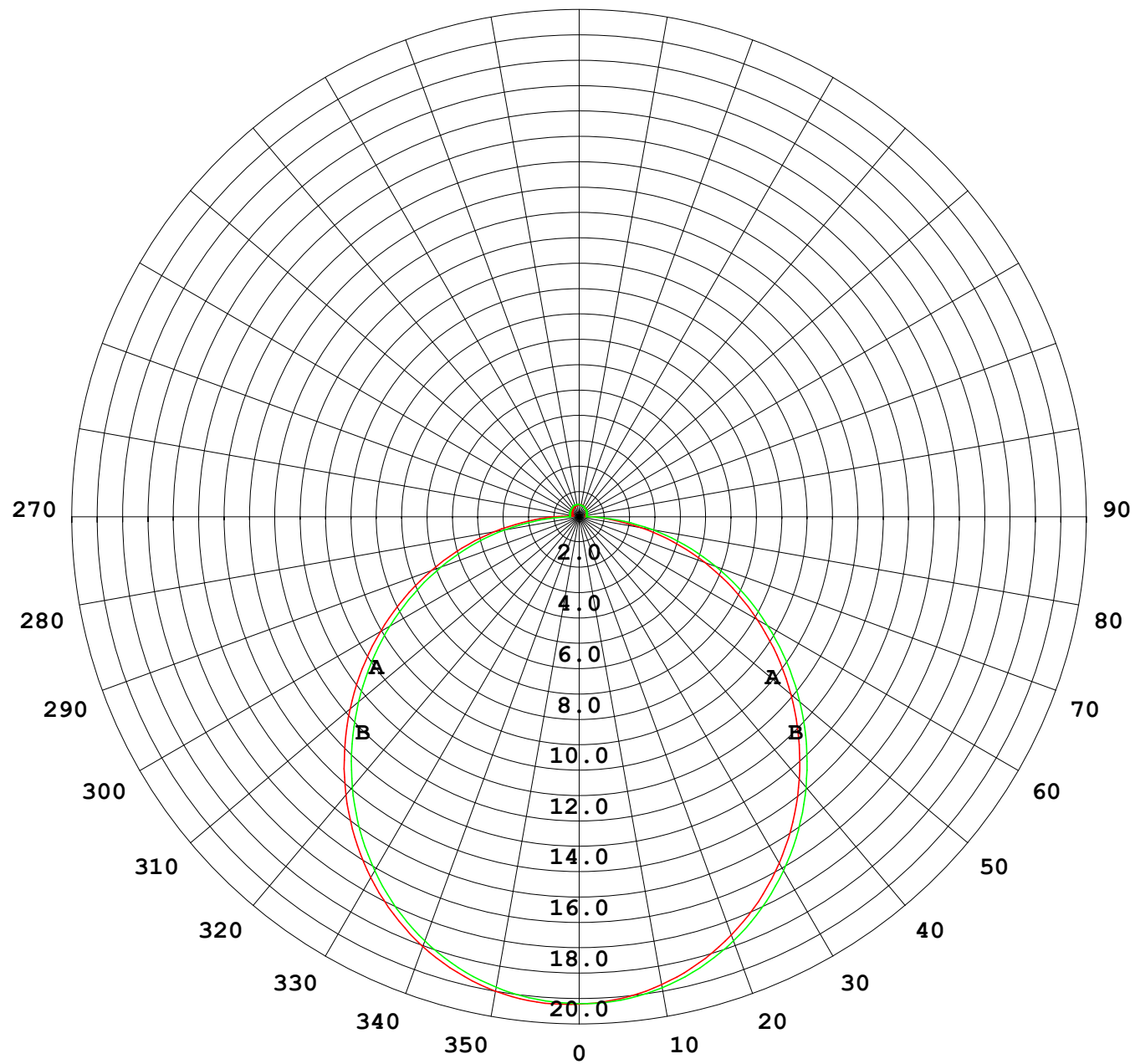
Test System:EVERFINE GO-2000B_V1 SYSTEM V2.00.488

Humidity:65.0%

Test Distance:6.360m [K=1.0000]

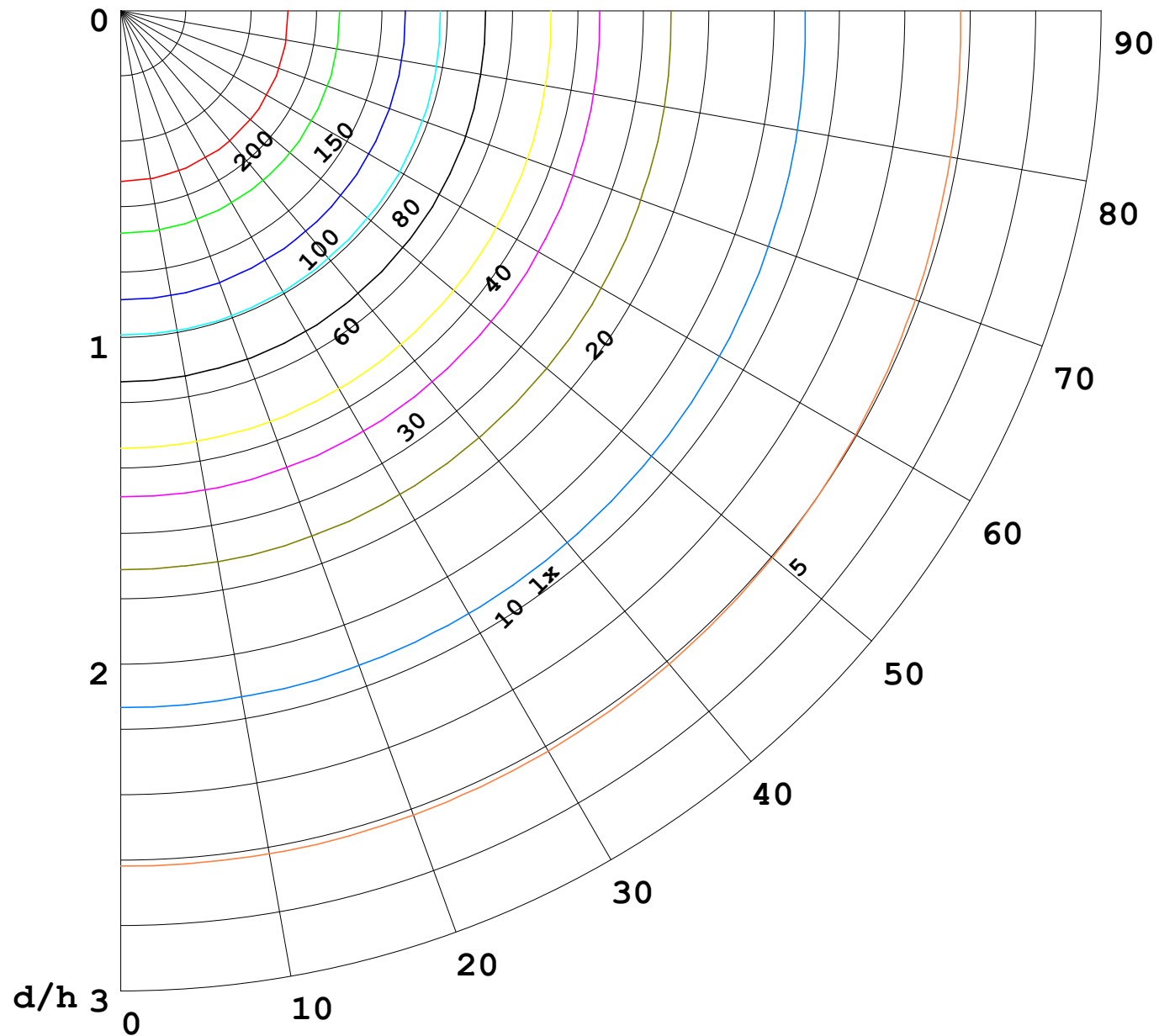
Remarks:

I (cd)



1000 lm

$\kappa = 1$



F = 1000 lm
 K = 0.7
 Hcc = 0.8 m
 Hfc = 0.0 m
 Eave = 100 lx

	Pcc	Pw	Pfc
—————	70	50	30
—————	50	30	20

